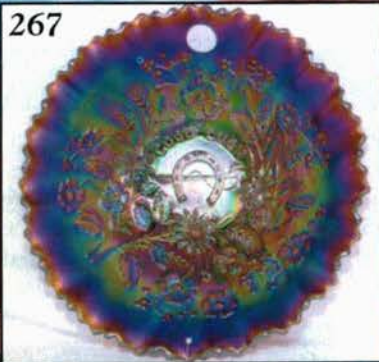


# CARNIVAL GLASS AUCTION

Saturday, November 10, 2001 9:30 a.m., C.D.T.

Mr. & Mrs. James Allen Collection

267



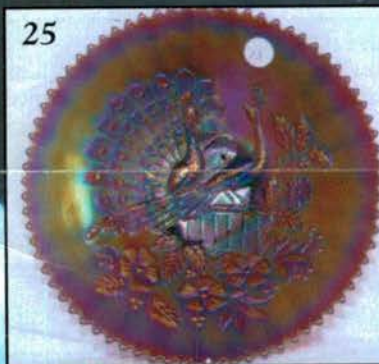
27



268



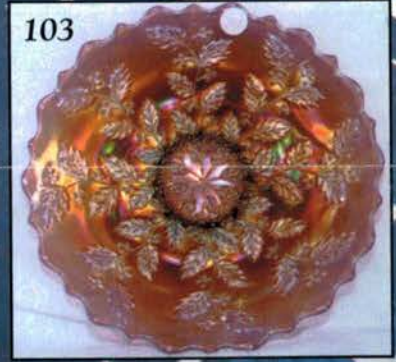
25



100



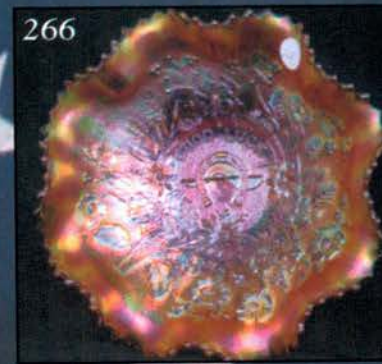
103



300



266



301



Held Inside the Mickey Reichel Auction Center, Boonville, Missouri

Office: 660-882-5292 • Home: 660-882-5283

Direct e-mail: [mreichel@undata.com](mailto:mreichel@undata.com)

NEW WEB SITE ON: <http://www.yourauctionpage.com/reichel>



# Held Inside the Mickey Reichel Auction Center

1 Mile North of I-70 on Hwy. 5, Exit 101, Boonville, Missouri • 20 Miles West of Columbia, MO on I-70

Preview Friday 12 p.m. - 5 p.m. and 8:00 a.m. - 9:00 a.m. Day of Auction



**TERMS:** Cash or Good Check, VISA and MasterCard accepted.



3% Clerking Fee on all purchases except for payment of cash or check. Proper I.D. required.

**WEBSITE:** [www.yourauctionpage.com/reichel](http://www.yourauctionpage.com/reichel)

## **ABSENTEE BID POLICY:**

**WRITE IN BIDS:** If you are unable to attend the auction, we will be happy to accept absentee bids which must be received by THURSDAY, NOVEMBER 8, 2001. Don't Delay. E-Mail: [mreichel@undata.com](mailto:mreichel@undata.com)

**FOR AUCTION PRICE RESULTS:** Send \$3.00 and Large S.A.S.E. to 516 Third Street, Boonville, MO 65233-1536

**PLEASE NOTE:** There is a **\$5 handling charge for each successful bid which will be added to the selling price** for all write-in bids. This is in addition to the cost of postage, insurance and packing. Your write-in bid will be entered just as if you are present and bidding. **Successful bidders will be notified in 1 to 3 days by the auctioneer (so be sure to include your phone number).** Direct mail bids to Auctioneer Mickey Reichel, 516 Third Street, Boonville, MO 65233-1536. Terms: Cash or Check accepted with proper I.D. and Social Security Number and References. Announcements made day of the auction supercede all printed material. Not Responsible for Accidents or Sold Items.

**No return on any items once they leave the Auction Center (No Exceptions).**\*\*\*\*

Call for additional information: 660-882-5292 days or 660-882-5283 evenings before 9:00 p.m.

**FAX: 660-882-5292 (evening hours start FAX transmission after beep)**

**MAIL BIDS:** Items are bid on in perfect condition with average or above iridescence OR as listed in the brochures. Bids will not be carried out when damage on an item has been found during the auction.

**PEOPLE PRESENT AT AUCTION ARE RESPONSIBLE FOR FINDING ANY PINHEADS, WEAR, SPOTTINESS, MANUFACTURER'S DEFECTS OR ANY OTHER MINOR FLAWS, ETC. \*\*\*\*\***

**NOTE:** Read each line, as we have accentuated the type of no particular piece, all are special.

**Make Reservations EARLY at one of these local motels:**

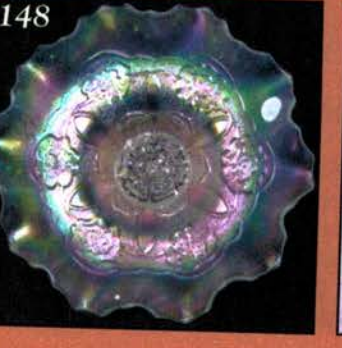
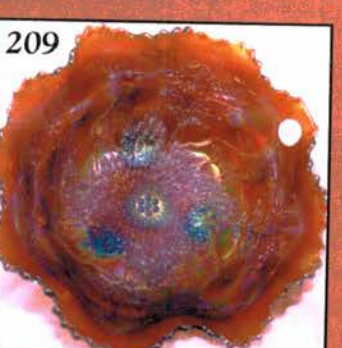
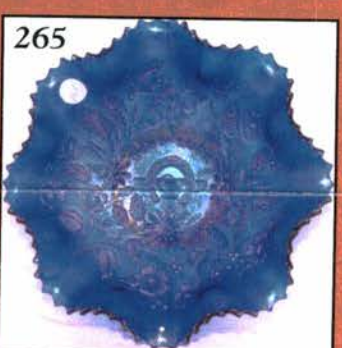
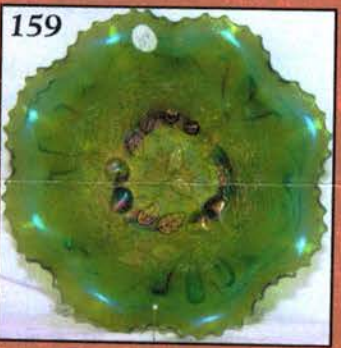
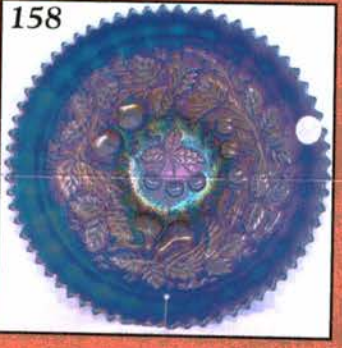
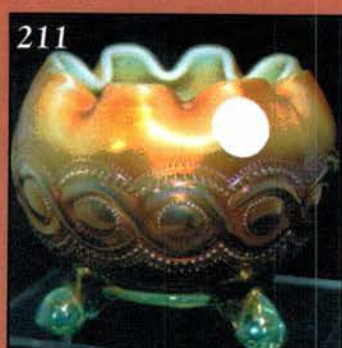
Days Inn: 660-882-8624 • Comfort Inn: 660-882-5317 • Super 8: 660-882-2900

## **Auction Consists of Rarity, Great Irid. and Variety**

### **THANK YOU FOR ATTENDING TODAY**

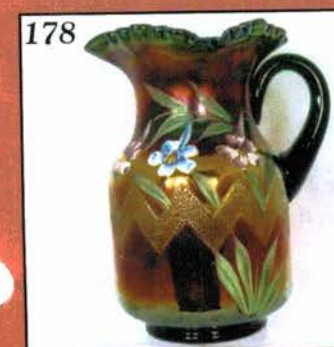
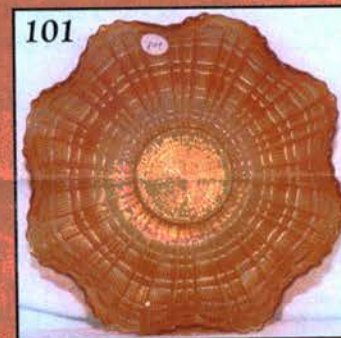
- |  |  |
|--|--|
| _____ 1. M - 6" Morning Glory Little Vase - Great One              | _____ 14. M - 8" Tall Octagon Mid-Size Water Pitcher   |
| _____ 2. 8" Ripple Vase - 5" Top - Very Pretty                     | _____ 15. M - Fenton Floral and Grape Vt. Water Pitcher - Above Average  |
| _____ 3. B - 11" Rustic Vase                                       | _____ 16. Rich M - Imp. Grape 7 pc. Water Set - Super  |
| _____ 4. G - <u>N</u> 10 1/2" Feathers Vase - M. Overlay           | _____ 17. Dark M - Octagon Mid-Size 7 pc. Water Set  |
| _____ 5. G - <u>N</u> 11 1/4" Feathers Vase - M. Overlay           | _____ 18. Rich M - Fashion 7 pc. Water Set - Great   |
| _____ 6. Yellow Amber - 9 1/2" Corinth Vase - Scarce Color         | _____ 19. M - Lattice and Grape Tankard Pitcher with Six Tumblers  |
| _____ 7. M - 11 1/4" Imp. Beaded Bullseye Vase                     | _____ 20. M - Lattice and Daisy Tankard Pitcher with Six Tumblers  |
| _____ 8. Smoke - 13 1/4" Freefold Vase - Scarce Color              | _____ 21. M - 10 1/2" Tall Octagon Decanter with Six Wines   |
| _____ 9. Rich M - 8 3/4" <u>N</u> Drapery Vase - Super Iridescence | _____ 22. Rich M - Imp. Grape Decanter with Six Wines  |
| _____ 10. M - 10" Tall Waffle Block Handled Basket - Scarce        | _____ 23. Scarce M - Diamond and Sunburst Decanter with Six Wines  |
| _____ 11. Clam - 10" Tall Imp. Grape Handled Basket - Nice         | _____ 24. M. Flashed - Interior Swirl 12 1/4" Tall Lemonade Pitcher w/Six Glasses - Blue and Black Enamel Decorated - Unlisted |
| _____ 12. M - 10" Tall Imp. Daisy Handled Basket - Scarce          |  |
| _____ 13. M - 5 1/4" Tall Big Basketweave Handled Basket           |  |

25. Beautiful A - 9" N Peacocks Plate - Rib Ext. - Great Irid.
26. Beautiful W - 9" N Peacocks Plate - Rib Ext. Great Irid.
27. Ice G - 8 1/4" N Peacocks Plate - Smooth Ext. - Gorgeous
28. M - PCE N Peacocks Bowl - Rib Ext. - Blues and Pinks
29. G - N 8 1/4" Scarce Smooth Back Three Fruits Plate
30. M - 9" 8-Ruffle Fenton Holly Bowl
31. M - 7", 6 Ruffle Collar Base Horse Medallion Bowl - Hot Pattern
32. PO - Dugan Ruffled Coin Spot Compote
33. Vas. 6 1/2" Sq. Ruffled Fenton Blackberry Spray Hat - M. Overlay
34. G - Inverted Strawberry Powder Dish - Base Only
35. M - Imp. Octagon Toothpick Holder - Signed IG
36. A - 8 1/2" J.I.P. Corinth Vase
37. A - 8 3/8" J.I.P. Corinth Vase
38. AO - N 11 1/2" Four Pillars Vase - Base Chip
39. A - 8 1/2" N Ftd. 8-Ruffle Wishbone Bowl - Neat Pattern
40. P - 8 3/4" N 8 Ruffle Embroidered Mums Bowl - Scarce Color
41. A - Ruffled Blackberry Spray Compote
42. G - Low Ruffled Fenton Iris Compote
43. M - Low Ruffled Fenton Iris Compote
44. Pretty B - Fenton Peacock at Urn Ruffled Compote
45. M - Fenton Peacock at Urn Ruffled Compote - Choice A or B
46. B - RARE 7" Smooth Edge 6 Ruffle Persian Medallion Compote
47. B - 6 3/4", 6 Ruffle CRE Persian Medallion Compote
48. M - 6 3/4", 6 Ruffle CRE Persian Medallion Compote
49. Scarce Deep B - 6 3/4", 6 Ruffle Fenton Vintage (Grape) Compote
50. M - 6", 6 Ruffle N Fern Compote - Daisy and Plume Ext. - A Beauty
51. P - N Grape and Cable Whimsey Compote from Sweetmeat - Great Find
52. B - Fenton Holly Sweet, 6 Ruffle Compote
53. M - Fenton Sm. Goblet Shaped Compote
54. Beautiful M - N Fruits and Flowers Stemmed Bon Bon
55. Vas. Glass Base - Dugan Question Mark Stemmed Compote - M. Overlay Does Not Glow - NEAT!
56. White Opal - Dugan Question Mark 6 1/4" CRE Stemmed Plate - Light Marigold Tints
57. Radium M - Imp. Octagon 5" Tall Stemmed Compote - Scarce Size
58. Pink - Dugan Coil Spot 8 Ruffle Compote - Radium Irid. - (RARE)
59. PO - Tri Corner, CRE Dugan Beaded Panels Compote - Butterscotch Overlay
60. BA - Round Bushel Basket - No Irid. - Very Unusual
61. Lovely G - 8" Rd. CRE Fenton Thistle Bowl - Pretty and Scarce
62. M - Butterfly and Berry Butter Dish and Lid - Base Cracked
63. Unusual B - 7 1/4" J.I.P. CRE Fenton Holly Hat - Very Wide and Very Nice!
64. A - N FTD 8 Ruffle Wishbone Bowl - Beautiful Multi Electric Irid.
65. M - 11 1/4" Imp. 8 Ruffle Flute Punch Bowl - Bowl Only, No Base
66. W - Fenton Orange Tree Punch Bowl - Bowl Only - Frosty and Gorgeous
67. Great B - Orange Tree Punch Bowl, Base, Six Cups - Extra Nice Set
68. Rich M - Imp. 12", 6 Ruffle Fanciful Punch Bowl, Base and Six Cups
69. (RARE) Clam - Imp. 11" 8 Ruffle Long Hobstar Punch Bowl and Base
70. M - 10 1/2" Collar Base, 8 Ruffle Imp. Lustre Rose Bowl - Very Fine Color
71. M - Twins Fruit Bowl and Base - Choice A or B
72. Radium M - 12 1/2" Rd. Imp. Broken Arches Punch Bowl, Base and Six Cups
73. Radium M - 12" Rd. Imp. 474 Punch Bowl, Base and Six Cups
74. Scarce G - 9" Collar Base, 8 Ruffle Dragon and Lotus Bowl - Electric Pink and Blue Highlights
75. Lav. - 9" Collar Base, 8 Ruffle Dragon and Lotus Bowl - Purples and Golds
76. M - 9" Collar Base, 8 Ruffle Dragon and Lotus Bowl - Purples and Golds
77. Rich M - 8 1/2" ICS Collar Base Dragon and Lotus Bowl - Electric Finish
78. Deep B - 8 3/8" ICS Collar Base Dragon and Lotus Bowl - Blues and Pinks
79. B - 9", 6 Ruffle Orange Tree Bowl - Bearded Berry Ext.
80. M - 8" ICS Orange Tree Bowl - Pastel Blues and Pinks
81. W - 9", 6 Ruffle Orange Tree Bowl - Frosty Satin Finish
82. M - 8 1/2" Fenton Captive Rose Bowl - Scarce 3 in 1 Treatment
83. B - 9", 6 Ruffle Fenton Captive Rose Bowl
84. Rich M - 6 Ruffle Fenton Captive Rose Bowl - Near Pumpkin
85. M - Spat. FTD 8", 8 Ruffle Stag and Holly Bowl - Extra Nice
86. M - Spat. FTD 7 1/2" ICS Stag and Holly Bowl - Scarce Shape
87. G - 8" Rd. CRE Fenton Acorn Bowl - Scarce and Pretty
88. M - 8 3/4", 6 Ruffle Fenton Acorn Bowl - Lots of Pink
89. Deep B - 8 3/4", 3 in 1 Edge, Fenton Acorn Bowl - Beautiful, Scarce Shape
90. B - 10 1/2" Fenton Persian Medallion Chop Plate - Beautiful Gold and Silver Radium Finish
91. M - 8 1/2" ICS Persian Medallion Bowl - All Iridescence on the Back - Unusual Treatment!



- \_\_\_\_\_ 92. Rare A - 7" Rd. (Low) Persian Medallion Bowl or Plate - 1 1/4" Off The Table - SUPER!!
- \_\_\_\_\_ 93. **B - Spat. FTD 7 1/2" Rd., Flared Two Flowers Bowl - Mirror Like Finish**
- \_\_\_\_\_ 94. B - Spat. FTD 7 1/4", 8 Ruffle Two Flowers Bowl - Pretty
- \_\_\_\_\_ 95. **M - Ball FTD 10 1/2" ICS Two Flowers Bowl**
- \_\_\_\_\_ 96. M - Spat. FTD 7 1/2" Rd. Two Flowers Bowl
- \_\_\_\_\_ 97. **M - Spat. FTD 7 1/4" Rd. Flared Two Flowers Bowl**
- \_\_\_\_\_ 98. G - 10" Collar Base, 6 Ruffle Ten Mums Bowl - Lite Wear
- \_\_\_\_\_ 99. **G - 8 3/4", 3 in 1 Fenton Vintage (Grape) Bowl - Audacious Iridescence**
- \_\_\_\_\_ 100. **RARE Sapphire - 9", 8 Ruffle Stippled Three Fruits Bowl - Rib Ext. - A BEAUTY!**
- \_\_\_\_\_ 101. **M - 9", 8 Ruffle Plaid Bowl - Great Example**
- \_\_\_\_\_ 102. P - N Spat. FTD, 8 Ruffle Sunflower Bowl - Beautiful Multi Electric
- \_\_\_\_\_ 103. **Lav. - 9 1/4" Fenton Holly Plate - Fantastic Find!**
- \_\_\_\_\_ 104. Rich M - 9", 8 Ruffle Fenton Holly Bowl
- \_\_\_\_\_ 105. **W - 8 3/4", 6 Ruffle Fenton Leaf Chain Bowl - Frosty**
- \_\_\_\_\_ 106. Clam - 8" ICS Fenton leaf Chain Bowl - Scarce Shape
- \_\_\_\_\_ 107. **M - 7", 6 Ruffle Leaf Chain Bowl**
- \_\_\_\_\_ 108. Dark B - 9 1/2", 8 Ruffle Little Flowers Bowl - Scarce Color
- \_\_\_\_\_ 109. **Helois G - Imp. Deep 9" Rd. Lustre Rose Master Berry and Six Small Berry Bowls - Set**
- \_\_\_\_\_ 110. P - 9" Deep Rd. Imp. Grape Bowl w/4 Small Berry Bowl
- \_\_\_\_\_ 111. **G - Imp. 9" Ruffled Flute Master Berry and Six Small Berry Bowls**
- \_\_\_\_\_ 112. M - 7 1/4" Rd. Imp. Shell and Sand Bowl
- \_\_\_\_\_ 113. **Aqua - 9" Ruffled Imp. Pansy Bowl - Sliver Off Rim**
- \_\_\_\_\_ 114. G - 9" Ruffled Imp. Pansy Bowl - Pink Highlights
- \_\_\_\_\_ 115. **P - 9" Ruffled Imp. Pansy Bowl - Blue and Purple Radium**
- \_\_\_\_\_ 116. Fantastic M - Imp. FTD 9" (Low) ICS Open Rose Bowl - Beautiful, Rare Shape
- \_\_\_\_\_ 117. **Radium Electric A - 8", 8 Ruffle Collar Base Imp Open Rose Bowl**
- \_\_\_\_\_ 118. Amber - 8", 8 Ruffle Collar Base Imp. Open Rose Bowl - Stunning!
- \_\_\_\_\_ 119. **Amber - 8 1/4", 8 Ruffle Collar Base Imp. Open Rose Bowl**
- \_\_\_\_\_ 120. Amber - 7 1/4", Deep, Rd. Collar Base Imp. Open Rose Bowl
- \_\_\_\_\_ 121. **Super Smoke - 9", Flared, Rd. Collar Base Imp. Open Rose Bowl - WOW!**
- \_\_\_\_\_ 122. Rich M - 9", 8 Ruffle Collar Base Imp. Open Rose Bowl
- \_\_\_\_\_ 123. **M - 9" Flat Imp. Open Rose Plate - Blues, Pinks, Yellows**
- \_\_\_\_\_ 124. M - 7 1/4", 8 Ruffle Imp. Star and File Bowl - Choice A or B
- \_\_\_\_\_ 125. **Rich P - 8 1/4" Imp. Heavy Grape Plate - Super Electric**
- \_\_\_\_\_ 126. M - 8", 8 Ruffle Imp. Windmill Bowl
- \_\_\_\_\_ 127. **M - 9 1/4", 8 Scallops, Flared Edge Octagon Bowl - Scarce Shape**
- \_\_\_\_\_ 128. M - 9", 8 Ruffle Imp. Grape Bowl - Radium Beauty
- \_\_\_\_\_ 129. **Teal - 8 1/2", 8 Ruffle Imp. Scroll Embossed Bowl - Plain Ext. - Mirrored Silver Finish and It Glows**
- \_\_\_\_\_ 130. M - Imp. (?) 7" Tall Six Sided, Fluted Candlesticks - Pair - ? Pattern
- \_\_\_\_\_ 131. **Fantastic Smoke - 9 1/4", 8 Ruffle Imp. Diamond Ring Bowl**
- \_\_\_\_\_ 132. PO - Dome Base, 9", 10 Ruffle Dugan Dogwood Bowl
- \_\_\_\_\_ 133. **PO - 3 FTD, 8 Ruffle Dugan Cherries Bowl - Pattern Inside and Out**
- \_\_\_\_\_ 134. PO - Dugan Dome Base, 9 1/4" CRE Stippled Petals Plate/Shallow Bowl
- \_\_\_\_\_ 135. **PO - Dugan Dome Base, 8 3/4", 3 in 1 Crimp Raindrops Bowl - Superb Example**
- \_\_\_\_\_ 136. PO - Dugan Dome Base, 8 3/8", Handgrip Ski Star and Compass Plate - Loads of Opal
- \_\_\_\_\_ 137. **PO - 7 1/2", 10 Flute, Deep 4 3/4", Dome Base Dugan Flowers and Frames Jardiniere Shaped Bowl**
- \_\_\_\_\_ 138. PO - Dugan Fishnet and Epergne - Base Only
- \_\_\_\_\_ 139. **PO - 11", 6 Ruffle Dugan Petal and Fan Master Bowl w/6 matching Berry Bowl - What A Find!**
- \_\_\_\_\_ 140. PO - 9", 3 in 1 Crimp Dugan Single Flower Bowl - 2" of Opal
- \_\_\_\_\_ 141. **M - 10", 10 Ruffle Persian Garden Deep Fruit Bowl - Wonderful!**
- \_\_\_\_\_ 142. M - Dugan Big Basketweave 4" Vase or Base
- \_\_\_\_\_ 143. **M - Dugan Spade Shape Leaf Rays Nappy**
- \_\_\_\_\_ 144. M - Ball FTD Dugan 10 Ruffle Cherries Bowl - Pattern Inside and Out - Extra Nice
- \_\_\_\_\_ 145. **M - 7 1/4" Dugan Fishscale and Beads Plate - Above Average**
- \_\_\_\_\_ 146. M - 6 3/8" Dugan Persian Garden Plate
- \_\_\_\_\_ 147. **M - Dome Base Dugan 10 Ruffle Double Stem Roses Bowl**
- \_\_\_\_\_ 148. Stretchy W - 9 1/4", Dome Base, 10 Ruffle Dugan Double Stem Roses Bowl
- \_\_\_\_\_ 149. **Luscious W - Dugan Wreathed Cherry Lg. Banana Shape Berry Bowl - Gold Trim**
- \_\_\_\_\_ 150. W - Dugan Wreathed Cherry Sm. Berry Bowls (Banana Shape) - Choice A, B, C, D, E
- \_\_\_\_\_ 151. **Super W - 9", ICS Fenton Cherry Chain Bowl - Outstanding Example**
- \_\_\_\_\_ 152. M - Dugan Wreath of Roses Rose Bowl
- \_\_\_\_\_ 153. **M - 6" Cherry Chain Plate - Orange Tree Ext. - Colorful**
- \_\_\_\_\_ 154. M - 8" Dugan Banana Shape Puzzle Stemmed, Two Handled Bon Bon
- \_\_\_\_\_ 155. **W - 9 1/2" FTD Orange Tree Master Berry Bowl with 4 Small Berry Bowl - Normal Rough Feet**
- \_\_\_\_\_ 155A. **P - N 9" Ruffled Three Fruits Bowl - BW Ext. - Electric Highlights**
- \_\_\_\_\_ 156. Pastel M - 8 1/4" Ruffled, Stippled Three Fruits Bowl - Rib Ext. - Outstanding
- \_\_\_\_\_ 157. **Pastel M - 8 1/4" Ruffled, Three Fruits Bowl - BW Ext.**

- \_\_\_\_\_ 158. Electric B - 9" N Stippled Three Fruits Plate - Rib Ext.
- \_\_\_\_\_ 159. Emerald G - Spat. FTD 9" Stippled Three Fruits Medallion Bowl
- \_\_\_\_\_ 160. AO - Spat. FTD 9" Stippled Three Fruits Medallion Bowl - Pink and Blue Overlays
- \_\_\_\_\_ 161. M - 8½" N Ruffled Strawberry Bowl - BW Ext. - Above Average Quality
- \_\_\_\_\_ 162. G - 8½" N Ruffled Strawberry Bowl - BW Ext. - Also Above Average
- \_\_\_\_\_ 163. P - N Memphis Punch Bowl, Base and 6 Cups - Small Bruise in Bowl - Super Pattern
- \_\_\_\_\_ 164. M - N Memphis Punch Bowl, Base and 6 Cups - Super Pattern and A Great Find
- \_\_\_\_\_ 165. G - N Memphis Fruit Bowl, Base and 6 Cups - Another Winner!
- \_\_\_\_\_ 166. Dark M - 11¼" Imp. 6 Ruffle Fashion Punch Bowl - Base and 6 Cups
- \_\_\_\_\_ 167. M - N Grape Arbor Tankard Pitcher w/Six Tumblers - Beautiful
- \_\_\_\_\_ 168. M - FTD Orange Tree Water Pitcher and 6 FTD Tumblers - Normal Foot Roughness
- \_\_\_\_\_ 169. M - FTD Ruffled Butterfly and Berry Fruit Bowl w/5 Sm. Berry Bowls
- \_\_\_\_\_ 170. M - FTD. Rd. Butterfly and Berry Fruit Bowl w/6 Sm. Berry Bowls
- \_\_\_\_\_ 171. M - 9½" Tall Imp. Octagon Decanter w/6 Wines - Shorter Than Most
- \_\_\_\_\_ 172. Dark M - Butterfly and Berry Water Pitcher and 6 Well-Matched Tumblers
- \_\_\_\_\_ 173. Pumpkin M - 9½", 8 Ruffle, FTD Fenton Panther Master Berry Bowl
- \_\_\_\_\_ 174. M - 5½", FTD Ruffled Panther Berry Dishes - Choice A, B, C, D
- \_\_\_\_\_ 175. M - Imp. Soda Gold Water Pitcher w/4 Matching Tumblers
- \_\_\_\_\_ 176. M - Tree Bark Tankard Pitcher w/6 Glasses
- \_\_\_\_\_ 177. M - Enamel Dec. Bulbous Periwinkle Water Pitcher and 4 Tumblers
- \_\_\_\_\_ 178. G - Enamel Dec. Columbine Water Pitcher w/4 Tumblers - Pitcher has Int. Flaw By Handle
- \_\_\_\_\_ 179. M - Grapevine and Lattice Tankard Water Pitcher w/6 Tumblers
- \_\_\_\_\_ 180. A - Mlbg. 10", 6 Ruffle Whirling Leaves Bowl - Satin Dandy
- \_\_\_\_\_ 181. G - Mlbg. 8¾", 6 Ruffle, Flared Top Blackberry Wreath Bowl - Radium Blue Center
- \_\_\_\_\_ 182. Great Satin A - Mlbg. 7½", 6 Ruffle Blackberry Wreath Bowl
- \_\_\_\_\_ 183. A - Mlbg. Hanging Cherries Creamer
- \_\_\_\_\_ 184. A - Mlbg. Hanging Cherries Spooner
- \_\_\_\_\_ 185. M - Mlbg. 10", 6 Ruffle Whirling Leaves Bowl - Multi Satin Beauty
- \_\_\_\_\_ 186. Pumpkin Mlbg. - Yes, It Is! - 9", 6 Ruffle Blackberry Wreath Bowl
- \_\_\_\_\_ 187. Outstanding M - 10½" Mlbg. Hanging Cherries 3 in 1 Shape Bowl - JUST A GEM!!
- \_\_\_\_\_ 188. M - Mlbg. 10¼" Scarce To Rare 3 in 1 Shape Rosalind Bowl - Rainbow Satin
- \_\_\_\_\_ 189. Radium M - Mlbg. 8½", 3 in 1, Grape Wreath Bowl - Multi Star Vt. - Hot Pink Center
- \_\_\_\_\_ 190. Radium M - Mlbg. 6½", 3 in 1, Grape Wreath Bowl - Feather Leaf Vt. Center - Nearly Square
- \_\_\_\_\_ 191. Radium M - Mlbg. 5¼", Rd. CRE Tight Crimp Blackberry Wreath Bowl - Pastel Pinks and Greens
- \_\_\_\_\_ 192. Radium A - Mlbg. 6", Crimped 3 in 1 Edge, Grape Wreath Vt. Bowl - Clove and Feather Center
- \_\_\_\_\_ 193. Radium G - Mlbg. 6½" Holly Sprig ICS Bowl - Blue and Pink Center
- \_\_\_\_\_ 194. G - Mlbg. Holly Whirl Card Tray Bon Bon - Satin Blues and Pinks
- \_\_\_\_\_ 195. Great M - 9½", Collar Base, 10 Ruffle Dugan Cosmos Vt. Bowl - Rare Shape
- \_\_\_\_\_ 196. Beautiful M - 10", 6 Ruffle Dugan Cosmos Vt. Bowl - Super Piece
- \_\_\_\_\_ 197. Emerald G - 9¼", 6 Ruffle Four Flowers Vt. Bowl - Breathtaking!
- \_\_\_\_\_ 198. Lav. - 9¼", 6 Ruffle Four Flowers Vt. Bowl - Breathtaking!
- \_\_\_\_\_ 199. Pumpkin M - 9", Sq. 8 Ruffle Fenton Peacock at Urn Bowl - WOW!
- \_\_\_\_\_ 200. Ice B - N 9" Ruffled Hearts and Flowers Bowl - Rib Ext. - Blues and Purples
- \_\_\_\_\_ 201. Dark M - Ball FTD, 9", Deep, 8 Ruffle Chrysanthemum/Windmill Fruit Bowl
- \_\_\_\_\_ 202. M - 9¾" Low, Low ICS Plaid Bowl - 2" Off Table - Your Call
- \_\_\_\_\_ 203. Pretty G - N Spat. FTD Grape and Cable Ruffled Bowl - Meander Ext.
- \_\_\_\_\_ 204. A - 7¼", Spat. FTD, Low ICS Peacock and Grape Bowl - Great Item!
- \_\_\_\_\_ 205. Deep B - 8" Ball FTD, J.I.P. Horse Medallion Bowl - Hot Pattern!
- \_\_\_\_\_ 206. M - 8" Ball FTD, J.I.P. Horse Medallion Bowl - Hot Pattern!
- \_\_\_\_\_ 207. DUGAN BLUE - 9½" Windflower Flat Plate - Great Color
- \_\_\_\_\_ 208. M - 9" Dugan Windflower Plate - Pinks and Blues
- \_\_\_\_\_ 209. Electric A - Ball FTD, Deep, 8 Ruffle Stag and Holly 9½" Fruit Bowl - WHEW!
- \_\_\_\_\_ 210. G - Ball FTD, Deep, 8 Ruffle 9½" Stag and Holly Fruit Bowl - Scarce Color
- \_\_\_\_\_ 211. AO - N Beaded Cable Rose Bowl - Beautiful Pastel Butterscotch Overlay
- \_\_\_\_\_ 212. Beautiful M - N Beaded Cable Rose Bowl - Lovely Yellows and Greens
- \_\_\_\_\_ 213. P - Double Stamped N Beaded Cable Rose Bowl - Rayed Int. - And It Is Pretty
- \_\_\_\_\_ 214. Electric Radium A - 11½" Imp. Freefold Vase - A Screamer!
- \_\_\_\_\_ 215. M - Mlbg. 11½" Vase - with 9¼" Front - Tulip Scroll - Radium Choice Find
- \_\_\_\_\_ 216. Aqua - 10½" Westmoreland Corinth Vase - Base Glows
- \_\_\_\_\_ 217. B - 11¼" April Showers Vase - Peacock Tail Int.
- \_\_\_\_\_ 218. Radium M - 14" Fenton Plume Panel Vase - Tallest I've Seen



219. **M - 12" Imp. Beaded Bullseye Vase - Pink Radium Highlights**
220. Russet - 10 1/4" Fenton Long Thumbprint Vase - M. and Silver Overlay
221. **Light M - 10 1/4" Imp. Parlor Panels Vase**
222. Sapphire - 10" Imp. Ripple Swung Vase
223. **Lav - 8 3/4" Imp. Ripple Vase - 3 3/8" Base, 5 3/8" Flared Top - Super Pastel Overlay**
224. P - N 6 1/2" Squatty Tree Trunk Vase - 3 1/2" Base, 5" Top
225. **Rich M - 6" Imp. Small Morning Glory Vase - 3 3/4" Flared Top**
226. B - 5 1/2" Paneled Diamond and Bows Vase - Short and Sweet
227. **Lime Vas. - N Starred Base, 7" Squatty Tree Trunk Vase - YES, IT GLOWS!**
228. B - 8 3/4", 6 Ruffle Heart and Vine Bowl
229. **B - Spat. FTD, 7 1/4", 8 Ruffle Stag and Holly Bowl - Great Pattern**
230. B - Spat. FTD, 7 1/4", 8 Ruffle Stag and Holly Bowl - Scarce Color
231. **A - 8", CRE Fenton Holly Bowl - Scarce Shape**
232. Electric B - Fruits and Flowers Stemmed Bon Bon - Great One!
233. **P - 6" ICS N Peacock At Urn Bowl - Fantastic Multi Electric**
234. P - 3 FTD N Daisy and Plume Ext./Raspberry Int. Ruffled Bowl
235. **G - N Fine Cut and Roses Rose Bowl - Extra Nice - Very Minor Nick on Ft.**
236. P - N Fine Cut and Roses Rose Bowl - Extra Nice - Very Minor Nick on Ft.
237. **P - 8 3/4" N Strawberry Bowl, Ruffled - BW Ext.**
238. P - N FTD, Ruffled Wishbone Bowl - Way Above Average
239. **A - 7 1/4" N Grape and Cable Plate - BW Ext. - Scarce Size and Nice**
240. M - 9" N Grape and Cable Plate - BW Ext. - Blues, Yellows and Pinks
241. **A - 8 1/2", 6 Ruffle Dugan Pony Bowl - Becoming Scarce - Great Example**
242. B - Scarce Fenton Illusion 4 Sides Up Bon Bon
243. **M - 6 Ruffle Dugan 8 1/2" Pony Bowl**
244. M - Fenton Illusion Card Tray Shape Bon Bon - Neat Pattern
245. **M - Fenton Illusion 4 Sides Up Bon Bon**
246. M - Fenton Butterfly Card Tray Shape Bon Bon
247. **M - Lotus and Grape Vt. 4 Sides Up Bon Bon**
248. B - Fenton Persian Medallion 4 Sides Up Bon Bon - Choice A or B
249. **G - Fenton Persian Medallion 4 Sides Up Bon Bon - Very Scarce Color**
250. G - N Paneled Holly Deep Bon Bon
251. **Radium M - Pond Lily Card Tray Shape Bon Bon**
252. Beautiful M - J.I.P. 2 Row O.E. Basket
253. **RED - 2 Row, O.E. 2 Sides Up Basket - Heavily Iridized**
254. Super Red - Fenton 6 1/4" Low, Rd. Stippled Rays Bowl - Scale Band Ext.
255. **Sapphire - 2 Row O.E. Basket - 4 Sides Up**
256. Sapphire - 6 1/2" Rd. Fenton Acorn Bowl - Radium Finish
257. **Deep, Deep P - Fenton 7 1/4", Sq. 8 Ruffle Grape and Cable Bowl**
258. A - 7", 6 Ruffle Peacock Tail Bowl
259. **B - N Singing Birds Mug - Multi Electric**
260. Scarce A - Orange Tree Mug - 3 1/2" Top, 2 1/2" Base
261. **P - Fisherman's Mug - Lots of Color**
262. A - Beaded Shell Tumbler
263. **A - Iris Buttermilk Goblet**
264. Neat B - Hen and Chicks Covered Dish
265. **Fantastic Elec. B - N Stippled, Ruffled Good Luck Bowl - Rib Ext.**
266. Exquisite Pastel M - N Stippled, Ruffled Good Luck Bowl - Rib Ext. - Super Pinks and Yellows
267. **P - N PCE Multi Electric Good Luck Bowl - Rib. Ext.**
268. G - N PCE Good Luck Vt. Bowl - BW Ext. - Very Scarce
269. **M - N 9", 6 Ruffle Grape Leaves Bowl**
270. M - N FTD Ruffled Wishbone Bowl - Extra Nice
271. **G - 7" Fenton Ruffled Vintage (Grape) Bowl**
272. M - 9" Collar Base, Sq. 8 Ruffle Peacock and Grape Bowl
273. **P - N 4 1/4", Rd. Pedestal Grape and Cable Sherbet**
274. Clam - 9", 6 Ruffle Leaf Chain Bowl
275. **PO - 8 1/2" Westmoreland Daisy Wreath Bowl**
276. M - 6 1/2" Persian Medallion Plate - Orange Tree Ext.
277. **G - 8 3/4", Dome Base, 6 Ruffle N Leaf and Beads Bowl - Plain Int.**
278. M - 8", Ball FTD, Sq. 8 Ruffle Fenton Grape and Cable Bowl
279. **P - 7 1/2" N 6 Ruffle Smooth Rays Bowl**
280. G - Westmoreland Shell and Jewel Creamer and Sugar w/Lids - Rare to Find with Lids
281. **B - Garland Rose Bowl**
282. M - 9" Fenton 6 Ruffle Thistle Bowl
283. **M - Fenton Flowers FTD Rose Bowl**
284. G - N 4 1/4" Rd. Acorn Burrs Berry Dish
285. **M - Windflower Sauce Boat - Nice One**
286. M - J.I.P. FTD Horse Medallion Bowl - Popular Pattern
287. **M - 8 1/4", Collar Base, ICS Dragon and Lotus Bowl**
288. M - 6 1/2", 2 Row OE Blackberry Hat - 2 Sides Up
289. **Dark B - 5", 6 Ruffle Fenton Holly Sm. Compote**
290. Pumpkin M - N Fruits and Flowers Stemmed Bon Bon
291. **Rich M - Lg. 6 Ruffle, CRE Persian Medallion Compote**
292. M - 9", 8 Ruffle Imp. Pansy Bowl - Radium
293. **M - 9", Collar Base, 8 Ruffle Chrysanthemum/Windmill Bowl**
294. M - Fenton Peacock at Urn Ruffled Compotes - Choice A or B




295. M - Imp. 474 Punch Cup - Nice One  
 296. M - 7", Sq. 8 Ruffle Imp. Heavy Grape Bowl  
 297. M - 8", 8 Ruffle FTD Wishbone Bowl  
 298. Extra Nice M - 5½", 6 Ruffle Flowering Dill Hat  
 299. M - Imp. Twins Fruit Bowl and Base - Choice A or B  
 300. Aqua with Opal Tips - PCE, Stippled Grape and Cable Bowl - Beautiful Butterscotch Overlay  
 301. Pastel AO - Ruffled Rose Show Bowl  
 302. M - Mlbg. 10", 6 Ruffle Primrose Bowl - Satin Pinks and Blues  
 303. M - Fenton Thistle Banana Boat/Waterlily and Cattails Ext.  
 304. M - 9¼" Flat Imp. Open Rose Stippled Plate - A Beauty  
 305. A - 8½", 3 in 1, Fenton Thistle Bowl - Scarce Shape  
 306. A - Dugan Wreathed Cherry Lg. Banana Shape Berry Bowl  
 307. A - Ruffled Wreath of Roses Compote  
 308. P - Westmoreland Leaf Swirl Compote  
 309. M - 4" Tall Ruffled Rococo Vase - Heat Flash In Body  
 310. M - 6" Ruffled Rococo Bowl  
 311. Clam - 9" Imp. Frosted Block Plate  
 312. B - Garland Rose Bowl  
 313. A - Fenton Butterfly Bon Bon - 4 Sides Up  
 314. G - Fenton Butterfly Bon Bon - 4 Sides Up  
 315. M - Cambridge Inverted Feather Parfait/Compote - Great Example  
 316. Super M - 7½" Deep Rd. Imp. Acanthus Bowl - Elec. Radium  
 317. M - 7¼" Flared Rd., Scalloped Shell and Sand Bowl  
 318. Pastel M - 6", 6 Ruffle Jeweled Heart Berry Bowl - Fine Item!  
 319. M - 5½", 6 Ruffle Fenton Two Flowers Bowl - Pumpkin Finish  
 320. P - 5", 8 Ruffle Imp. Diamond Lace Berry Bowl  
 321. M - Imp. Poinsettia Milk Pitcher  
 322. M - 8¼", 3 in 1 Fenton Holly Bowl  
 323. M - 9", 8 Ruffle Imp. Grape Bowl  
 324. Teal - Imp. Pansy Ruffled Relish Dish  
 325. **ULTRA RARE!** - Lime G Opal - N Leaf and Beads Rose Bowl - Sorry, Int. Crack, But A Beauty! (See Photo Low Right)  
 326. **RARE Sapphire** - N Leaf and Beads Rose Bowl - Sunflowers Int.  
 327. Lav. Smoke - N Leaf and Beads Rose Bowl - Plain Int. - Beautiful Irid.  
 328. M - 6", 2 Row O.E., J.I.P. Hat  
 329. M - L.B.J. Hat Ashtray  
 330. Scarce Clam - 8¼", 6 Ruffle Orange Tree Bowl  
 331. M - 7½" Sq. 8 Ruffle Fenton Grape and Cable Bowl  
 332. M - Imp. FTD Lustre Rose Fernery Bowl  
 333. **Gorgeous M - Imp. Grape Decanter with Stopper**  
 334. M - Imp. Grape Wine Glass - Very Nice Color  
 335. Olive G - Imp. Grape Wine Glass

336. M - Golden Harvest Wine Glass  
 337. **Contemporary - G - 1992 ICGA 9" Lions Cake Plate**  
 338. Contemporary - Red - 1993 ACGA Inverted Strawberry Cuspidor  
 339. **Contemporary - Red - 1991 ICGA Roses Slipper**  
 340. Contemporary - Red - 1991 ACGA Inverted Strawberry Sm. Basket  
 341. **PO - Dugan Leaf Rays Spade Shape Nappy - Lots of Opal**  
 342. M - Imp. Fashion Punch Bowl Base - Choice A or B  
 343. **Pumpkin M - Lattice and Grape Tumbler**  
 344. G - N Memphis Punch Cup - Silvery Irid.  
 345. M - 7¼", 8 Ruffle Imp. Star and File Bowl - Choice A or B  
 346. M - 8¼", Deep Rd. Stork In Rushes Master Bowl  
 347. M - 9¼", 8 Ruffle Moon print Bowl - Radium and Nice

**\*Over 100 Additional Uncatalogued Pieces Of Carnival Glass**


**THANK YOU FOR ATTENDING TODAY**

**SPECIAL NOTE:**  
 **CALENDAR OF AUCTION EVENTS**

**11th Annual  
 New Years Auction  
 Saturday, January 5, 2002**

**Booking for Spring  
 2002 Auctions  
 Call TODAY**

**For Free Color Catalogs & Information Write:**  
**Mickey Reichel**  
**516 Third Street, Boonville, MO 65233-1536**  
**or Call: 660-882-5292 days or**  
**660-882-5283 evenings**  
**E-mail: mreichel@undata.com**

 **Website: [www.yourauctionpage.com/reichel](http://www.yourauctionpage.com/reichel)**

**Call today for 2002 bookings.  
 (1 piece or entire collection!!)**

