

BURNS

AUCTION SERVICE

Mid-Atlantic Carnival Glass Jamboree Auction

Friday & Saturday,
October 26 & 27, 2001

Friday: Preview - 3:00 p.m.; Auction 6:30 p.m. (Lots 1 - 190)
Saturday: Preview - 8:00 a.m.; Auction: 9:00 a.m. (Lots 191 - end)
at the

Venice Inn

301 Dual Highway (Rte. 40), Hagerstown, MD 21740
(301) 733-0830

or for Reservations 1-800-2-VENICE

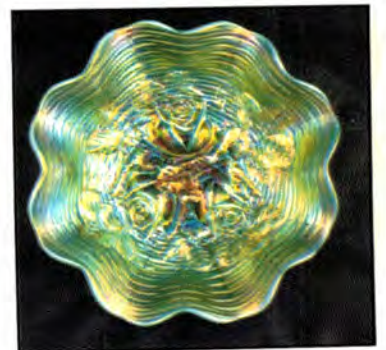
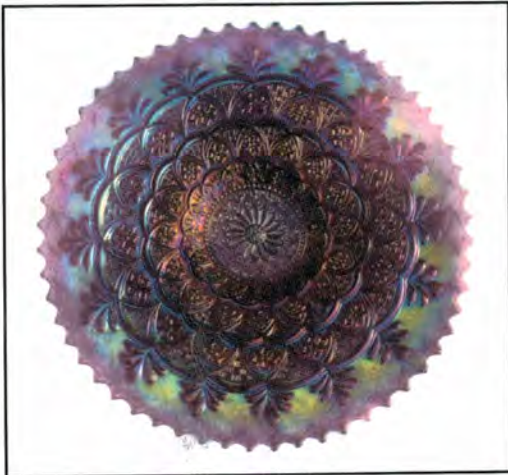


This year we got ourselves a Barn-Burner! The annual Mid Atlantic Carnival Glass Jamboree Auction will consist of the collection of Joe & Arlene Johannets from New York.

They have decided to part with their collection for personal reasons and will offer it at auction, to the highest bidder. Talk about color and iridescence! This glass has it all - they we're really picky - one of those collectors that's tough on you when you're the auctioneer. When we were doing the listing I HAD to tell the owners that this was one of the best quality selections, piece by piece, that we've ever sold.

The Venice Inn of Hagerstown will host the event. To make your reservations call the motel direct at 1-800-2-VENICE. For more info on the Jamboree itself call Bill Mizell at (301) 384-8952.

SPECIAL NOTE, FOLKS! I'm being honest when I say that if ya can't find something here to like - you sure don't like much! See ya there!



Burns Auction Service

Tom Burns
P.O. Box 608
Bath, New York 14810
(607) 776-7942 Cell: 731-9302

Bill Richards
44 Water Street, Poland OH 44514
(330) 757-2001
FAX (330) 757-4917

Bill Richards III
2253 Country Lane
Poland, OH 44514
(330) 755-2620

Mail Bids honored under the following conditions:

1. No deposit required. Bidders will take full responsibility to honor any and all bids we execute for them. Payment in full plus postage and handling required after notification and before we ship any item to them.
2. Items are bid on in perfect condition with average or above average iridescence OR as listed in the brochures. Bids will not be carried out when damage on an item has been found during the auction. **PEOPLE PRESENT AT THE AUCTION ARE RESPONSIBLE FOR FINDING ANY PIN-HEADS, WEAR, SPOTTINESS, MANUFACTURER'S DEFECTS OR ANY OTHER MINOR FLAWS, ETC.**
3. Successful bidders will be notified by collect call from the auctioneer **SO BE SURE TO INCLUDE PHONE NUMBER.**
4. Phone inquiries about the glass or any other questions are welcome.
5. If you have some other person at the auction bidding for you, they must pay for the item before taking it.
6. Any terms or conditions given the day of the auction will supersede any previously published information.
7. Mail, e-mail, fax and phone bids are due by Wednesday, October 24, 2001.

Visit our website at: www.tomburnsauction.com

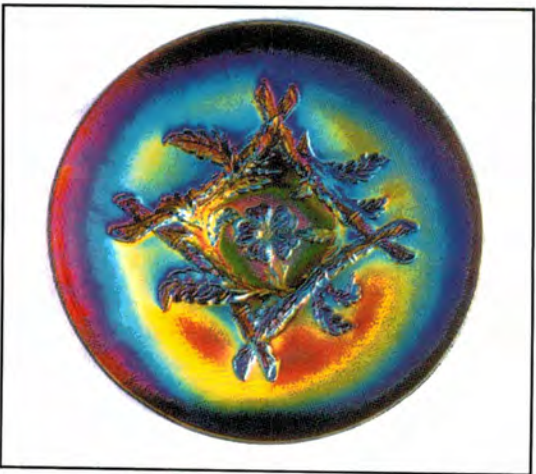
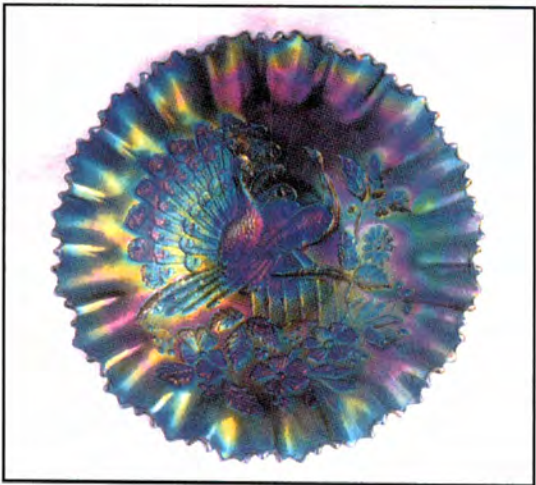
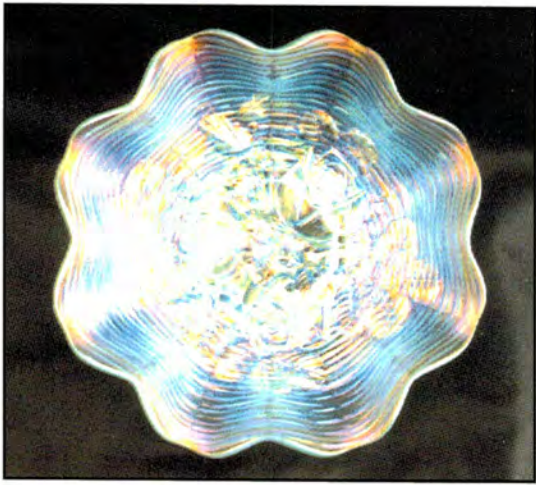
- | | |
|---|--|
| <p>___ 1. St. Clair Argonaut Shell Toothpick Holder - Mari.</p> <p>___ 2. Robert Hansen Winged Owl Toothpick Holder - Teal (scarce; nice)</p> <p>___ 3. Robert Hansen Zippered Panel Toothpick Holder - Green (scarce; nice)</p> <p>___ 4. Imperial Flute Toothpick Holder - Green</p> <p><u>925</u> 5. IMPERIAL FLUTE TOOTHPICK HOLDER - BLUE (RARE COLOR; NICE IRID.)</p> <p>___ 6. Imperial Flute Toothpick Holder - Lavender (scarce; nice irid.)</p> <p>___ 7. Imperial Flute Toothpick Holder - Amy. (nice irid.)</p> <p>___ 8. Imperial Flute Toothpick Holder - Mari.</p> <p><u>17,000</u> 9. Imperial Octagon Toothpick Holder - Dk. Mari. (rare; nice color)</p> <p><u>17,000</u> 10. 10 3/4" N PEACOCK AT THE URN CHOP PLATE - ICE GREEN (ABSOLUTELY FANTASTIC ITEM; GREAT COLOR AND IRID.; SUPER RARE - ONLY 3 KNOWN)</p> <p><u>400</u> 11. 6 1/2" N PEACOCK AT THE URN FLARED PLATE - DK. MARI. (RARE AND DESIRABLE; GREAT COLOR)</p> <p><u>750</u> 12. N PEACOCK AT THE URN INDIVIDUAL ICE CREAM BOWL - GREEN (RARE COLOR WITH NICE IRID.)</p> <p>___ 13. N Peacock at the Urn Individual Ice Cream Bowl - Amy. (nice irid.)</p> <p>___ 14. N Peacock at the Urn Individual Ice Cream Bowl - Ice Green (very scarce; nice irid.)</p> <p>___ 15. N Peacock at the Urn Individual Ice Cream Bowl - Ice Blue (very scarce; nice irid.)</p> <p>___ 16. N Peacock at the Urn Individual Ice Cream Bowl - White (scarce; nice irid.)</p> <p>___ 17. N Peacock at the Urn All Over Stippled Individual Ice Cream Bowl - Pastel Mari. (very scarce with great irid.)</p> <p>___ 18. N Peacock at the Urn Individual Ice Cream Bowl - Dk. Mari. (nice color and irid.)</p> <p>___ 19. N Peacock at the Urn Individual Ice Cream Bowl - Custard / Nutmeg (scarce; really nice Nutmeg decor.)</p> <p><u>1500</u> 20. N PEACOCK AT THE FOUNTAIN 7 PC. WATER SET - WHITE (RARE AND VERY DESIRABLE; GREAT COLOR AND IRID.)</p> <p>___ 21. N Peacock at the Fountain 4 pc. Table Set - Dk. Mari. (great set; spooner has pinhead)</p> <p><u>550</u> 22. N GOOD LUCK BOWL WITH PIE CRUST EDGE AND RIBBED EXT. - ELEC. BLUE (SUPER COLOR AND IRID.; EXCELLENT ITEM)</p> <p>___ 23. N Good Luck Bowl with Pie Crust Edge and Ribbed Ext. - Pur. (very scarce; nice irid.)</p> <p>___ 24. N Good Luck Bowl with Pie Crust Edge and Ribbed Ext. - Dk. Mari. (really nice dark example)</p> <p><u>1000</u> 25. N SINGING BIRDS HANDLED MUG - AQUA OPAL. (RARE AND VERY DESIRABLE; PASTEL FINISH)</p> <p>___ 26. N Singing Birds Handled Mug - Ice Blue (rare and desirable color; nice example)</p> <p>___ 27. N Singing Birds Handled Mug - White (very scarce; nice irid.; tough to find)</p> <p>___ 28. N Singing Birds Handled Mug - Emerald Green (super example with great color and irid.)</p> | <p>___ 29. N Singing Birds Handled Mug - Amy. (really nice irid.)</p> <p>___ 30. N Singing Birds Handled Mug - Lavender (rare pastel base color; nice irid.)</p> <p>___ 31. N Singing Birds Handled Mug - Elec. Blue (super color and great irid.; really nice)</p> <p>___ 32. N Stippled Singing Birds Handled Mug - Dk. Mari. (super color and irid.)</p> <p>___ 33. N Singing Birds Handled Mug - Pastel Mari. (great irid.; really nice)</p> <p>___ 34. N Singing Birds Handled Mug - Dk. Mari. (super color)</p> <p><u>2800</u> 35. N PEACOCKS PLATE WITH RIBBED EXT. - ELEC. BLUE (RARE AND VERY DESIRABLE; SUPER BLUE IRID.; NICE)</p> <p><u>1700</u> 36. N PEACOCKS BOWL WITH PIE CRUST EDGE AND RIBBED EXT. - GREEN (RARE AND VERY DESIRABLE WITH NICE COLOR AND IRID.)</p> <p>___ 37. N Peacocks Bowl with Pie Crust Edge and Ribbed Ext. - Elec. Blue (very rare and desirable with nice irid.)</p> <p>___ 38. N Peacocks Bowl with Pie Crust Edge and Ribbed Ext. - Pur. (scarce with really nice color and irid.)</p> <p>___ 39. N Peacocks Bowl with Pie Crust Edge and Ribbed Ext. - Dk. Mari. (nice example; small chip on sharp point)</p> <p><u>1200</u> 40. N PEACOCKS BOWL WITH PIE CRUST EDGE AND PLAIN EXT. - WHITE (RARE WITH EXCELLENT IRID.; REALLY NICE)</p> <p><u>550</u> 41. N STRAWBERRY STIPPLED BOWL WITH PIE CRUST EDGE AND RIBBED EXTERIOR - PUR. (VERY DESIRABLE WITH EXCELLENT IRID.)</p> <p>___ 42. N Strawberry Stippled Bowl with Pie Crust Edge and Ribbed Exterior - Pastel Mari. (very desirable; nice irid.; flake on side)</p> <p>___ 43. N Three Fruits Bowl with Pie Crust Edge and Basketweave Ext. - Pur. (very desirable with excellent irid.)</p> <p>___ 44. 9 1/2" N Fruits and Flowers Bowl with Pie Crust Edge and Basketweave Ext. - Pur. (very rare shape with really nice irid.)</p> <p><u>1450</u> 45. PAIR 6" TALL FENTON #249 PORTLY CANDLESTICKS - RED (VERY RARE PAIR; GREAT COLOR AND SATINY IRID.)</p> <p><u>525</u> 46. PAIR 6" TALL FENTON #249 PORTLY CANDLESTICKS - WISTERIA (VERY RARE COLOR FOR THIS PAIR; REALLY NICE)</p> <p>___ 47. Pair 6" Tall Fenton #249 Portly Candlesticks - Vaseline (very desirable color for these items)</p> <p>___ 48. Pair 6" Tall Fenton #249 Portly Candlesticks - Ice Green (desirable with nice color and irid.)</p> <p>___ 49. Pair 6" Tall Fenton #249 Portly Candlesticks - White (quite a rare color for these items)</p> <p>___ 50. Pair 6" Tall Fenton #249 Portly Candlesticks - Celeste Blue (attractive color and irid.)</p> <p>___ 51. Pair 6" Tall Fenton #249 Portly Candlesticks - Grecian Gold (very scarce pair)</p> |
|---|--|

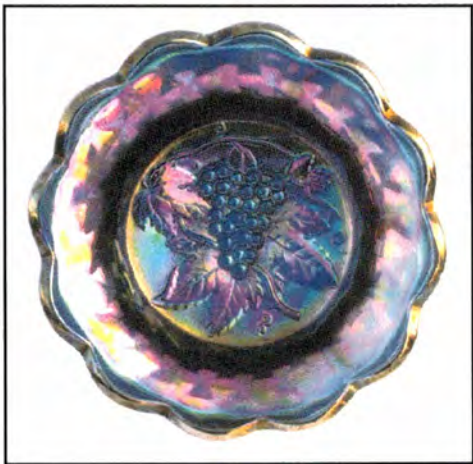
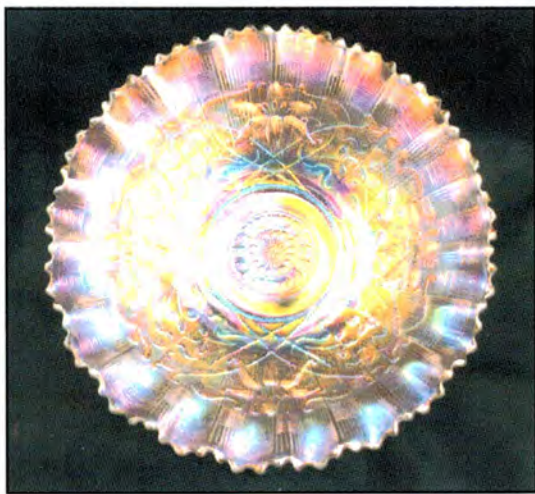
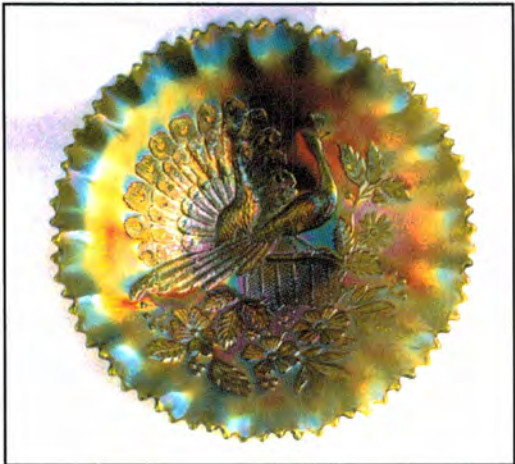
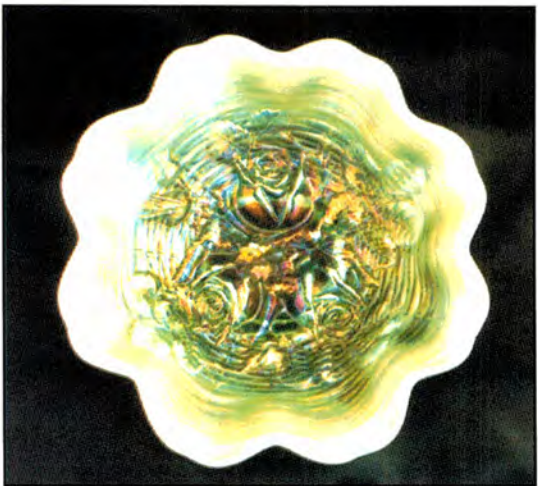
- 350 52. 9 1/2" N WISHBONE BOWL WITH PIE CRUST EDGE AND BASKETWEAVE EXT. - WHITE (RARE AND VERY DESIRABLE; SUPER FROSTY IRID.)
53. N Nippon Bowl with Pie Crust Edge and Ribbed Ext. - Pur. (very scarce; has a manuf. flaw)
54. N Nippon Bowl with Pie Crust Edge and Ribbed Ext. - Dk. Ice Blue (super example with nice color and irid.)
- 4000 55. 17 3/4" TALL X 5 1/4" BASE N TREE TRUNK MID SIZE SWUNG FUNERAL VASE - GREEN (EXTREMELY RARE AND VERY DESIRABLE; SUPER ITEM)
- 4900 56. 13" TALL X 3 5/8" BASE N TREE TRUNK MID SIZE SWUNG VASE WITH PLUNGER BASE - EMERALD GREEN (ABSOLUTELY SUPER PIECE OF NORTHWOOD GREEN - WOW!)
- 850 57. 14" TALL X 4 1/2" BASE N TREE TRUNK MID SIZE SWUNG VASE - WHITE (RARE AND VERY DESIRABLE; SUPER IRID.)
- 800 58. 12 3/4" TALL X 4 1/2" BASE N TREE TRUNK MID SIZE SWUNG VASE - BLUE (VERY RARE BASE COLOR WITH GREAT IRID.)
59. 13 1/4" Tall x 4 5/8" Base N Tree Trunk Mid Size Swung Vase - Pur. (very scarce with very nice irid.)
60. 12 1/2" Tall x 4 1/2" Base N Tree Trunk Mid Size Swung Vase - Mari. (very scarce with really nice irid.)
- 900 61. 10 5/8" TALL X 3 3/8" BASE N TREE TRUNK STANDARD SWUNG VASE - AQUA OPAL. (RARE AND DESIRABLE COLOR; NICE IRID.)
62. 10 1/2" Tall x 3 1/2" Base N Tree Trunk Standard Swung Vase - Ice Green (very scarce; nice color and irid.)
63. 11 1/8" Tall x 3 1/2" Base N Tree Trunk Standard Swung Vase - Ice Blue (very scarce; nice color and irid.)
64. 12 1/2" Tall x 3 3/8" Base N Tree Trunk Standard Swung Vase - Custard / Nutmeg (really tough item to find; nice Nutmeg)
65. 10 5/8" Tall x 3 1/2" Base N Tree Trunk Standard Swung Vase - Blue (really scarce base color with nice irid.)
66. 9 5/8" Tall x 3 3/8" Base N Tree Trunk Standard Swung Vase - Green (very scarce; nice irid.)
67. 9 1/2" Tall x 3 1/2" Base N Tree Trunk Standard Swung Vase - Pur. (nice color and irid.)
68. 11" Tall x 3 1/2" Base N Tree Trunk Standard Swung Vase - Dk. Mari. (super color and irid.)
69. 12 3/4" Tall x 5 1/2" Base x 9 3/4" Flare Imperial Interior Wide Panel Squatty Funeral Vase - Clam. (large item with nice irid.)
70. 9" TALL X 3 1/2" X 6" FLARE IMPERIAL STRETCH INTERIOR PANELS SWUNG VASE - RED (VERY SCARCE AND VERY DESIRABLE; NICE)
71. 8 1/2" Tall x 3 3/8" Base x 5 7/8" Flare Imperial Stretch Interior Panels Swung Vase - Pur. (rare color with nice color and irid.)
72. 8" Tall x 3 1/2" Base x 7" Flare Imperial Stretch Interior Panels Swung Vase - Smoke (scarce with great irid.)
73. 7 3/4" Tall x 3 3/8" Base x 6" Flare Imperial Stretch Interior Panels Swung Vase - Teal (very scarce base color with great irid.)
74. 8 1/2" Tall x 3 1/2" Base x 6 1/2" Flare Imperial Stretch Interior Panels Swung Vase - White (very scarce item with great irid.)
75. 9 1/2" Tall x 3 1/2" Base x 6" Flare Imperial Stretch Interior Panels Swung Vase - Smoke / Milk Glass (scarce and desirable item; really nice)
76. 8 5/8" Tall x 3 1/2" Base x 6 1/4" Flare Imperial Stretch Interior Panels Swung Vase - Mari. / Milk Glass very scarce with nice color and irid.)
- 500 77. FENTON HORSEHEAD MEDALLION FTD. ROSE BOWL - MARI. / VASELINE (RARE ITEM IN A VERY TOUGH COLOR)
78. Fenton Horsehead Medallion ftd. Rose Bowl - Blue (very scarce with great color and detail)
79. Fenton Horsehead Medallion ftd. Rose Bowl - Mari. (nice irid.)
- 2250 80. N ACORN BURR 8 PC. RUFFLED PUNCH SET - GREEN (VERY RARE AND VERY DESIRABLE; NICE)
- 1900 81. N ACORN BURR 8 PC. RUFFLED PUNCH SET - PUR. (VERY RARE AND VERY DESIRABLE; GREAT COLOR)
82. N Acorn Burr 8 pc. Ruffled Punch Set - Dk. Mari. (very rare and very desirable; nice)
- 300 83. FENTON WINE AND ROSES FTD. HANDLED CIDER PITCHER - DK. MARI. (SCARCE EXAMPLE WITH NICE IRID.)
84. Fenton Wine and Roses Stemmed Goblet - Mari.
- 1000 85. DUGAN FISHERMAN'S HANDLED MUG - P. OPAL. (RARE AND EXTREMELY DESIRABLE; GREAT COLOR AND OPAL.)
86. Dugan Fisherman's Handled Mug - Dk. Mari. (very scarce with excellent irid.)
87. Dugan Fisherman's Handled Mug - Pur. (really nice item)
- 400 88. DUGAN HERON HANDLED MUG - PUR. (VERY SCARCE ITEM WITH GREAT COLOR AND IRID.)
89. Dugan Golden Harvest 8 pc. Wine Set - Mari. (scarce set)
- 3900 90. N ROSE SHOW RUFFLED BOWL - ICE GREEN OPAL. (EXTREMELY RARE AND VERY DESIRABLE ITEM; GREAT COLOR AND IRID.)
- 1100 91. N ROSE SHOW RUFFLED BOWL - AQUA OPAL. (RARE AND DESIRABLE; NICE PASTEL EXAMPLE)
- 1050 92. N ROSE SHOW RUFFLED BOWL - ICE BLUE (RARE AND DESIRABLE; NICE COLOR AND IRID.)
93. N Rose Show Ruffled Bowl - White (very scarce; frosty with nice irid.)
94. N Rose Show Ruffled Bowl - Blue Opal. (not Carnival; has nice color and opal.)
- 650 95. N ROSE SHOW RUFFLED BOWL - BLUE (RARE AND DESIRABLE; REALLY NICE COLOR AND IRID.)
96. N Rose Show Ruffled Bowl - Amy. (scarce and desirable; nice color and irid.)
97. N Rose Show Ruffled Bowl - Dk. Mari. (scarce and desirable; nice color and irid.)
- 1300 98. N ROSE SHOW FLARED PLATE - GREEN (RARE AND VERY DESIRABLE; NICE COLOR AND IRID.; HAS CHIP ON MOLD LINE)
99. N Rose Show Flat Plate - White (very scarce with really nice irid.)
- 650 100. N LEAF AND BEADS FTD. ROSE BOWL - AQUA OPAL. (ABSOLUTELY FANTASTIC PASTEL EXAMPLE; GREAT COLOR AND IRID.)
101. N Leaf and Beads ftd. Rose Bowl - Aqua Opal. (very scarce and desirable; nice overlay and irid.)
102. N Leaf and Beads ftd. Rose Bowl - Ice Green (rare and nice; has a chip on one foot)
- 950 103. N LEAF AND BEADS FTD. ROSE BOWL - ICE BLUE (RARE AND DESIRABLE; NICE COLOR AND IRID.)
104. N Leaf and Beads ftd. Rose Bowl - White (very scarce; perfect with nice color and irid.)
105. N Leaf and Beads ftd. Rose Bowl - Renninger Blue (very scarce color with blue highlights)
106. N Leaf and Beads ftd. Rose Bowl - Elec. Blue (very desirable item with bright blue highlights)
107. N Leaf and Beads ftd. Rose Bowl - Dk. Mari. (scarce; really nice color and irid.)
108. N Leaf and Beads ftd. Rose Bowl with Floral Int. - Green (scarce; satiny finish)
109. N Leaf and Beads ftd. Rose Bowl with Floral Int. - Pur. (scarce; satiny finish)
110. 8" N Leaf and Beads ftd. Flared Plate with Rays Int. - Green (rare shape for this item; average irid.)
- 400 111. DUGAN STORK AND RUSHES HANDLED MUG - BLUE (VERY RARE ITEM IN THIS COLOR; GREAT DETAIL, SMALL UNIRIDIZED SPOT)
112. Dugan Stork and Rushes Handled Mug - Amy. (scarce; nice color and irid.)
113. Dugan Stork and Rushes Handled Mug - Blue Opal. (not Carnival; quite a rare item; nice)
114. Dugan Stork and Rushes Handled Mug - Mari.
- 1450 115. N HEARTS AND FLOWERS STEMMED RUFFLED COMPOTE WITH RIBBED EXT. - GREEN (VERY RARE AND ATTRACTIVE; GREAT COLOR AND IRID.)
- 700 116. N HEARTS AND FLOWERS STEMMED RUFFLED COMPOTE WITH RIBBED EXT. - ELEC. BLUE (RARE AND DESIRABLE; GREAT COLOR AND IRID.)
117. N Hearts and Flowers Stemmed Ruffled Compote with Plain Ext. - Pur. (rare and desirable; really nice color and irid.)
118. N Hearts and Flowers Stemmed Ruffled Compote with Ribbed Ext. - Blue Opal. (not Carnival but very desirable)
119. N HEARTS AND FLOWERS STEMMED RUFFLED COMPOTE WITH PLAIN EXT. - ICE GREEN (RARE AND DESIRABLE; NICE COLOR AND IRID.)
120. N HEARTS AND FLOWERS STEMMED RUFFLED COMPOTE WITH PLAIN EXT. - ICE BLUE (RARE AND DESIRABLE; EXCELLENT COLOR AND IRID.)

- 550 121. **N HEARTS AND FLOWERS STEMMED RUFFLED COMPOTE WITH PLAIN EXT. - AQUA OPAL. (RARE AND VERY DESIRABLE; NICE PASTEL EXAMPLE)**
- ___ 122. N Hearts and Flowers Stemmed Ruffled Compote with Ribbed Ext. - White (very scarce; nice color and irid.)
- ___ 123. N Hearts and Flowers Stemmed Ruffled Compote with Ribbed Ext. - Mari. (very scarce; nice color and irid.)
- 750 124. **N HEARTS AND FLOWERS BOWL WITH PIE CRUST EDGE AND RIBBED EXT. - AMY. (VERY SCARCE AND VERY DESIRABLE; NICE COLOR AND IRID.)**
- 1900 125. **N HEARTS AND FLOWERS BOWL WITH PIE CRUST EDGE AND RIBBED EXT. - LIME ICE GREEN (VERY RARE AND VERY DESIRABLE; GREAT BASE COLOR AND IRID.)**
- ___ 126. **PAIR 7" TALL N #637 paneled candlesticks - IVORY IRID. OR CUSTARD (VERY SCARCE AND VERY DESIRABLE SET; SUPER)**
- ___ 127. Pair 7" Tall N #637 Paneled Candlesticks - Opaque Blue (scarce; really nice color and irid.)
- ___ 128. Pair 7" Tall N #637 Paneled Candlesticks - Celeste Blue (scarce; really nice color and irid.)
- ___ 129. Pair 8 1/2" Tall N #657 Paneled Candlesticks - Coral Slag (not iridized; very scarce set)
- ___ 130. Pair 8 1/2" Tall N #657 Paneled Candlesticks - Opaque Blue (very scarce; nice color and irid.)
- ___ 131. Pair 8 1/2" Tall N #657 Paneled Candlesticks - Vaseline (very scarce and desirable; nice color)
- ___ 132. Pair 8 1/2" Tall N #657 Paneled Candlesticks - Celeste Blue (very scarce; nice color and irid.)
- ___ 133. Pair 8 1/2" Tall N #657 Paneled Candlesticks - Russet Green (very scarce; nice color and irid.)
- 1700 134. **DUGAN JEWEL HEART 5 PC. WATER SET - DK. MARI. (RARE AND DESIRABLE SET; NICE COLOR AND IRID.)**
- 4300 135. **IMPERIAL GRAPE WATER CARAFE - EMERALD GREEN (ABSOLUTELY FANTASTIC COLOR AND GREEN IRID.; A WOW!)**
- 1450 136. **IMPERIAL GRAPE WATER CARAFE - SMOKE (VERY RARE AND VERY DESIRABLE; SUPER IRID.)**
- ___ 137. Imperial Grape Water Carafe - Pur. (very scarce with super irid.)
- ___ 138. Imperial Grape Water Carafe - Dk. Mari. (actually quite scarce; super irid.)
- ___ 139. Imperial Grape Handled Water Pitcher - Pur. (very scarce; super color and irid.)
- 425 140. **6" IMPERIAL GRAPE FLAT PLATE - TEAL (VERY RARE BASE COLOR; REALLY UNUSUAL ITEM)**
- ___ 141. 6" Imperial Grape Flat Plate - Pur. (very scarce; super color and irid.)
- ___ 142. 6" Imperial Grape Flat Plate - Mari. (nice color and irid.)
- ___ 143. **IMPERIAL GRAPE 8 PC. WINE SET - PUR. (RARE SET WITH GREAT COLOR AND IRID.)**
- ___ 144. **IMPERIAL GRAPE DECANTER AND STOPPER - SMOKE (RARE COLOR FOR THIS ITEM)**
- 700 145. **6 1/2" IMPERIAL HEAVY GRAPE DEEP ROUND BOWL - BLUE (EXTREMELY RARE COLOR FOR THIS ITEM; SUPER!)**
- ___ 146. **11" IMPERIAL HEAVY GRAPE CHOP PLATE - WHITE (RARE AND VERY DESIRABLE; SUPER STRETCH EFFECT AND IRID.)**
- ___ 147. **11" IMPERIAL HEAVY GRAPE CHOP PLATE - PUR. (RARE AND VERY DESIRABLE; SUPER IRID.)**
- ___ 148. 11" Imperial Heavy Grape Chop Plate - Amber (very rare color with nice irid.)
- ___ 149. 11" Imperial Heavy Grape Chop Plate - Helios Green (scarce with silvery irid.)
- ___ 150. **IMPERIAL DIAMOND AND SUNBURST 8 PC. WINE SET - PUR. (VERY RARE AND DESIRABLE SET; NICE COLOR AND IRID.)**
- ___ 151. 11 1/2" Tall Imperial Freefold Swung Vase - Pur. (super color and irid.)
- ___ 152. 12 1/2" Tall Imperial Freefold Swung Vase - Smoke (super color and irid.)
- ___ 153. **PAIR IMPERIAL DOUBLE SCROLL CANDLESTICKS - RED (RARE AND DESIRABLE SET WITH NICE COLOR)**
- ___ 154. Pair Imperial Double Scroll 3 pc. Console Set - Smoke (scarce set with nice irid.)
- 1850 155. **IMPERIAL FLUTE 7 PC. WATER SET - PUR. (VERY RARE SET WITH GREAT COLOR AND IRID.)**
- ___ 156. 12 1/4" Imperial Beaded Bullseye Odd Swung Vase - Pur. (great color and irid.; really nice)
- ___ 157. 7 5/8" Imperial Beaded Bullseye Squatty Swung Vase - Dk. Mari. (odd shape; nice color and irid.)
- ___ 158. **IMPERIAL LOGANBERRY VASE - AMBER (VERY SCARCE AND DESIRABLE; GOLDISH HIGHLIGHTS)**
- ___ 159. 10 1/2" Tall Imperial Ripple Swung Vase - Pur. (great color and irid.; really nice)
- ___ 160. 16" Tall x 4 7/8" Base x 6 1/2" Flare Imperial Morning Glory Swung Vase - Pur. (rare and desirable; chips around base)
- ___ 161. **IMPERIAL DIAMOND LACE 7 PC. WATER SET - PUR. (RARE AND DESIRABLE; GREAT IRID.)**
- ___ 162. Imperial Hobstar Flower Stemmed 6 Ruffled Compote - Pur. (super color and really nice)
- ___ 163. Imperial Hobstar Flower Stemmed 6 Ruffled Compote - Lime Green (odd base color with nice irid.)
- ___ 164. **IMPERIAL EMBOSSED SCROLL MINIATURE 6 RUFFLED STEMMED COMPOTE - LT. AMY. (VERY DESIRABLE ITEM; EXCELLENT LIGHT BASE COLOR AND IRID.)**
- 150 165. **IMPERIAL THUMBPRINT AND OVALS 6 RUFFLED VASE - PUR. (RARE AND VERY DESIRABLE; SUPER COLOR AND BRIGHT IRID.)**
- ___ 166. **6 1/2" - 7" TALL IMPERIAL MORNING GLORY AND DRAPE SMALL SWUNG VASE - PUR. (RARE AND DESIRABLE; SUPER COLOR AND IRID.)**
- ___ 167. 6 1/2" - 7" Tall Imperial Morning Glory and Drape Small Swung Vase - Dk. Mari. (nice color with really nice irid.)
- ___ 168. Imperial Rococco 6 Ruffled Vase - Smoke (very scarce; nice color and irid.)
- ___ 169. Imperial Rococco 6 Ruffled Vase - Dk. Mari. (scarce with nice color and irid.)
- 2100 170. **10 1/2" IMPERIAL HATTIE CHOP PLATE - PUR. (VERY RARE AND VERY DESIRABLE; SUPER IRID.)**
- ___ 171. **10 1/2" IMPERIAL HATTIE CHOP PLATE - GREEN (RARE AND DESIRABLE; NICE COLOR)**
- ___ 172. 5 1/2" Imperial Miniature Morning Glory Swung Vase - Smoke (very scarce with nice irid.)
- ___ 173. 4 3/4" Imperial Miniature Morning Glory Swung Vase - Green (scarce color and size)
- ___ 174. 5 1/8" Imperial Miniature Morning Glory Swung Vase - Dk. Mari. (really nice color)
- ___ 175. 5 1/2" Imperial Miniature Morning Glory Swung Vase - Pur. (super color and super irid.)
- ___ 176. Westmoreland Corinth Jack in the Pulpit Vase - Blue Opal. (very scarce base color)
- ___ 177. Westmoreland Corinth Jack in the Pulpit Vase - Lt. Mari. / Lt. Moonstone (scarce with nice opal.)
- ___ 178. Westmoreland Corinth Jack in the Pulpit Vase - P. Opal. (scarce with nice opal.)
- ___ 179. Westmoreland Corinth Jack in the Pulpit Vase - Teal (scarce color)
- ___ 180. **IMPERIAL CHATELINE TUMBLER - PUR. (VERY SCARCE; REALLY NICE COLOR AND IRID.)**
- ___ 181. **IMPERIAL OCTAGON COLLAR BASED TUMBLER - PUR. (RARE AND DESIRABLE WITH BRIGHT HIGHLIGHTS)**
- ___ 182. Imperial Fieldflower Tumbler - Amy. (scarce with nice irid.)
- ___ 183. Imperial Soda Gold Tumbler - Smoke (nice irid.; scarce)
- ___ 184. 15 1/2" Fenton Rustic Mid Size Swung Vase - Dk. Mari. (nice color and irid.)
- ___ 185. **FENTON LOTUS AND GRAPE HANDLED 2 SIDED CARD TRAY - RED (RARE AND DESIRABLE; NOT A BAD EXAMPLE)**
- ___ 186. Fenton Lotus and Grape Handled 2 Sided Card Tray - Mari. / Vaseline (very scarce; great color and irid.)
- ___ 187. Fenton Lotus and Grape Handled 2 Sided Card Tray - Powder Blue / Mari. (very scarce color with Mari. overlay)
- ___ 188. **FENTON DAISY CUT BELL - MARI. (RARE AND DESIRABLE; NICE COLOR AND PERFECT)**
- ___ 189. Maker? Dinner Bell with Twisted Handle - Lt. Mari.
- ___ 190. Imperial Flute Twisted Toothpick Holder - Mari. (very odd shape - twisted)

START OF SECOND SESSION

191. Beaded Hatpin - Dark (scarce)
 192. Hollow Dart Hatpin - Dark (scarce)
 193. Tufted Throwpillow Hatpin - Dark (very scarce)
 194. Unlisted "Basketweave and Studs" Hatpin - Dark (super irid.; unusual)
 1600 195. **OWL HATPIN - LIME GREEN (EXTREMELY RARE WITH THE ORIGINAL GOLD ON THE BEAK - REALLY NICE)**
 196. Unlisted "3 Leaf Clover Petal" Hatpin - Cobalt Blue (rare and unusual with excellent irid.)
 197. Flying Bat Hatpin - Dark (very scarce, very nice)
 198. (2) Cattails (or 6 Plums) Hatpins - part of patterns frosted
 199. Cattail (or 6 Plums) Hatpin - Dark (very scarce)
 200. (5) Rooster Hatpins - Asst. Colors (different colors; selling choice)
 201. (2) Top of the Walk Hatpins - Dark (nice irid.; selling choice)
 202. Dragonfly Hatpin - Dark (nice irid.)
 203. Big Butterfly Hatpin - Dark (nice irid.)
 204. Basket Flower Hatpin - Dark (scarce; nice irid.)
 205. Geometric Pinwheel Hatpin - Dark (scarce; nice irid.)
 206. Jute Braid (Basketweave Variant) Hatpin - Dark (scarce; nice irid.)
 207. Bubbles Hatpin - Dark (scarce; nice irid.)
 208. Turbin Hatpin - Dark (nice color)
 209. Garden Path (or Flowers Arcs) Hatpin - Dark (scarce; nice color)
 210. Dugan Honeycomb Rose Bowl - P. Opal. (scarce; nice)
 211. Dugan Honeycomb Rose Bowl - Amber Spatter / Frit (not Carnival; very scarce)
 212. Dugan Honeycomb Rose Bowl - Crystal Green / Frit (not Carnival; scarce)
 213. Dugan Honeycomb Rose Bowl, Spittoon Shaped - Crystal Blue / Frit (not Carnival; scarce)
 214. Dugan Honeycomb Rose Bowl, Concave Spittoon Shaped - Amber Spatter / Frit (not Carnival; scarce)
 215. Dugan Honeycomb Rose Bowl, Tri-Cornered Top - Green Opal. / Frit (not Carnival; scarce shape)
 216. Dugan Interior Ribbed Tri-Cornered Rose Bowl - Lime Green / Frit (not Carnival; scarce)
 217. Dugan Interior Ribbed Tri-Cornered Rose Bowl - Crystal Blue / Frit (not Carnival; scarce)
 218. Dugan (or Albany) Swirled Base Pinched In Tri-Cornered Vase - Clam. Irid. (great irid.)
 219. Dugan Heavy Iris Tumbler - Amy. (scarce)
 1800 220. **12 - 13" DUGAN PERSIAN GARDEN FLAT CHOP PLATE - AMY. (EXTREMELY RARE AND DESIRABLE; LIGHT AMY. WITH NICE IRID.)**
 221. **N RASPBERRY TUMBLER - HOREHOUND (SUPER EXAMPLE WITH GREAT IRID. - NICE)**
 222. Fenton Interior Coin Dot Tumbler - Mari. (nice color)
 223. M'burg Feather and Heart Tumbler - Mari. (scarce; satiny)
 224. M'burg Marilyn Tumbler - Lt. Mari. (very scarce with an unusual radium finish)
 225. **CAMBRIDGE BUZZ SAW LARGE CRUET AND STOPPER - GREEN (VERY RARE AND VERY DESIRABLE; REALLY TOUGH TO FIND)**
 226. **CAMBRIDGE BUZZ SAW LARGE CRUET AND STOPPER - MARI. (VERY RARE AND DESIRABLE; NICE SATINY FINISH)**
 227. Cambridge Buzz Saw Large Cruet and Stopper - Crystal (scarce)
 228. **CAMBRIDGE BUZZ SAW SMALL CRUET AND STOPPER - GREEN (RARE AND DESIRABLE; NICE COLOR AND IRID.)**
 229. Cambridge Near Cut Mug, "Souvenir - Rice Lake, Wis." - Mari. (very scarce; nice color and decor.)
 230. **M'BURG MULTI-FRUITS STEMMED SHERBET - GREEN (VERY RARE AND DESIRABLE; RADIUM AND NICE)**
 231. **M'BURG MULTI-FRUITS STEMMED SHERBET - AMY. (ALSO VERY RARE AND DESIRABLE; RADIUM AND NICE)**
 232. M'burg Boutoniere Stemmed 6 Ruffled Compote - Amy. (radium and very desirable; super)
 233. M'burg Boutoniere Stemmed 6 Ruffled Compote - Green (another radium item with great irid.)
 234. M'burg Feather and Heart 7 pc. Water Set - Mari. (very scarce and desirable set; satiny and nice)
 235. **M'BURG LEAF AND LITTLE FLOWERS SQUATTY 6 RUFFLED COMPOTE - GREEN (RADIUM AND SUPER; GREAT COLOR AND IRID.)**
 236. **M'BURG SEACOAST PINTRAY - AMY. (VERY SCARCE WITH AVERAGE IRID.)**
 237. M'burg Swirl Hobnail Rose Bowl - Pur. (really nice satiny example)
 238. M'burg Swirl Hobnail Rose Bowl - Dk. Mari. (super color and irid.; really nice)
 239. M'burg Hobnail Rose Bowl - Mari. (scarce with nice irid.)
 240. **9 5/8" TALL M'BURG SWIRL HOBNAIL SWUNG VASE - GREEN (RARE AND DESIRABLE; NICE COLOR AND IRID.)**
 241. 10 1/2" Tall M'burg Swirl Hobnail Swung Vase - Amy. (very scarce and very desirable; nice irid.)
 242. **PAIR CAMBRIDGE INVERTED STRAWBERRY CANDLESTICKS - GREEN (RARE PAIR WITH GREAT COLOR; HAS SOME CHIPS)**
 243. **PAIR CAMBRIDGE INVERTED STRAWBERRY CANDLESTICKS - MARI. (RARE PAIR WITH GREAT COLOR; HAS SOME CHIPS)**
 244. **PAIR IMPERIAL SIX SIDED CANDLESTICKS - DK. MARI. (RARE PAIR WITH GREAT COLOR AND IRID. - REALLY NICE)**
 900 245. **PAIR 10 1/2" TALL FENTON STRETCH CUT OVAL LARGE CANDLESTICKS - VASELINE (RARE AND VERY DESIRABLE; SUPER COLOR AND CUTTING)**
 246. **PAIR 8 1/2" TALL FENTON STRETCH CUT OVAL SMALL CANDLESTICKS - GRECIAN GOLD (VERY SCARCE AND DESIRABLE PAIR; NICE)**
 247. Pair 10 1/2" Tall N Stretch #696 Paneled Candlesticks - Celeste Blue (very scarce; nice color and irid.)
 248. Pair 10 1/2" Tall N Stretch #696 Paneled Candlesticks - Ice Green (very scarce; nice color and irid.)
 249. Pair 10 1/2" Tall N Stretch #349 Paneled Candlesticks - Dk. Amber (rare nice base color)
 175 250. **PAIR 8 1/2" FENTON #549 ROUND CANDLESTICKS - WISTERIA (SUPER SCARCE AND VERY DESIRABLE SET; NICE)**
 251. Pair 8 1/2" Fenton #549 Round Candlesticks - Grecian Gold (scarce and very desirable)
 400 252. **PAIR 8 1/2" FENTON #232 ROUND / RIBBED CANDLESTICKS - CELESTE BLUE (SUPER ATTRACTIVE PAIR WITH GREAT COLOR AND IRID.)**
 253. 9 5/8" Tall Jenkins Field Thistle Swung Vase - Mari. (very scarce)
 675 254. **10" TALL EDA FLORAL AND SUNBURST FLARED VASE - DK. MARI. (RARE AND UNUSUAL; GREAT COLOR AND IRID.)**
 2500 255. **13 1/2" TALL X 4 3/4" BASE N THIN RIB MID SIZE SWUNG VASE - ICE GREEN OPAL. (IN THE AQUA OPAL. FAMILY BUT BASE COLOR IS MORE GREENISH - VERY RARE AND DESIRABLE)**
 900 256. **14 5/8" TALL X 4 3/4" BASE N THIN RIB MID SIZE SWUNG VASE - VASELINE (VERY RARE AND DESIRABLE; GREAT COLOR)**
 1035 257. **13" TALL X 4 3/4" BASE N THIN RIB MID SIZE SWUNG VASE - SAPPHIRE BLUE (RARE AND VERY DESIRABLE; SUPER COLOR AND IRID.)**
 1700 258. **12 1/2" TALL X 4 3/4" BASE N THIN RIB MID SIZE SWUNG VASE - LIME ICE GREEN (VERY RARE AND VERY DESIRABLE; REALLY NICE)**
 259. **12 1/2" TALL X 4 3/4" BASE N THIN RIB MID SIZE SWUNG VASE - WHITE (VERY SCARCE; NICE FROSTY COLOR AND IRID.)**
 260. **13 1/2" TALL X 4 3/4" BASE N THIN RIB MID SIZE SWUNG VASE - BLUE / ELEC. BLUE (RARE BASE COLOR WITH BLUE HIGHLIGHTS)**
 261. 12 1/2" Tall x 4 3/4" Base N Thin Rib Mid Size Swung Vase - Emerald Green (really nice color; has check in base)
 262. 14" Tall x 4 3/4" Base N Thin Rib Mid Size Swung Vase - Pur. (scarce; nice irid.)
 263. 12 3/4" Tall x 4 3/4" Base N Thin Rib Mid Size Swung Vase - Mari. (very scarce and very nice)
 264. 13 1/8" Tall x 4 3/4" Base N Thin Rib Mid Size Swung Vase - Jade Green (not iridized; scarce)
 265. 14" Tall x 4 3/4" Base N Thin Rib Mid Size Swung Vase - Coral Red (not iridized; very scarce)

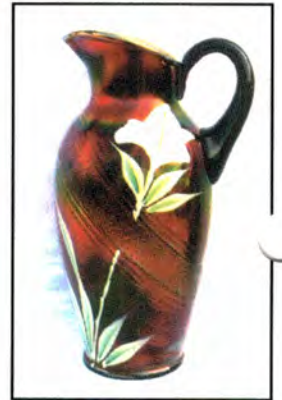




266. 5 1/2" AUSTRALIAN KANGAROO 12 RUFFLED SAUCE - PUR. (RARE; SUPER IRID.)
267. 5 1/2" Australian Kangaroo 12 Ruffled Sauce - Mari. (rare; nice color)
268. 5 1/2" AUSTRALIAN NESTING SWAN 12 RUFFLED SAUCE - PUR. (RARE; NICE COLOR)
269. 5 1/2" Australian Nesting Swan 12 Ruffled Sauce - Mari. (rare; nice color)
270. 5 1/4" Australian Emu 8 Ruffled Sauce - Pur. (rare; nice color)
271. 5 1/2" Australian Thunderbird 12 Ruffled Sauce - Pur. (scarce; nice)
272. 5 1/2" Australian Thunderbird 12 Ruffled Sauce - Mari. (scarce; nice)
273. 5 1/2" Australian Kingfisher 12 Ruffled Sauce - Mari. (scarce; nice)
274. 5 1/2" Australian Kookaburra 12 Ruffled Sauce - Mari. (scarce)
- 500 275. 11" TALL N THIN RIB STANDARD SWUNG VASE - SAPHIRE BLUE (RARE AND VERY DESIRABLE; SUPER ITEM)
276. 9 3/4" TALL N THIN RIB STANDARD SWUNG VASE - ICE GREEN (RARE AND VERY DESIRABLE; REALLY NICE)
277. 10 1/4" Tall N Thin Rib Standard Swung Vase - Ice Blue (rare and desirable; really nice)
278. 10 3/8" Tall N Thin Rib Standard Swung Vase - Odd Amy. / Smoke (very odd base color; nice irid.)
279. 9 3/4" Tall N Thin Rib Standard Swung Vase - Elec. Blue (attractive item with blue highlights)
280. 9" Tall N Thin Rib Jester's Cap Jack in the Pulpit Vase - Amy. (scarce; really nice irid.)
281. 9 3/4" Tall N Thin Rib Standard Swung Vase - Emerald Green (very scarce; really nice irid.)
282. 10 7/8" Tall N Thin Rib Standard Swung Vase - Mari. (really nice irid.)
283. 10 1/2" Tall N Thin Rib Standard Swung Vase - Russet Green (nice color)
284. 10 5/8" Tall N Thin Rib Standard Swung Vase - Coral Slag (not iridized; scarce)
- 1750 285. FENTON MILADY 7 PC. TANKARD WATER SET - BLUE (RARE AND VERY DESIRABLE; PITCHER QUITE ATTRACTIVE)
- 1150 286. FENTON MILADY 7 PC. TANKARD WATER SET - DK. MARI. (RARE SET; PITCHER IS REALLY NICE)
287. Dugan Paneled Jack in the Pulpit Vase - Pur. (very scarce; really nice)
288. Dugan Paneled Jack in the Pulpit Vase - P. Opal. (very scarce; nice opal.)
289. N Leaf Columns Squatty Swung Vase - Pur. (very desirable size with nice irid.)
- 1200 290. DUGAN BIG BASKETWEAVE SQUATTY UNSWUNG VASE - PUR. (ABSOLUTELY SUPER COLOR WITH GREAT IRID.)
291. DUGAN BIG BASKETWEAVE SWUNG VASE - DK. ICE BLUE (RARE AND VERY DESIRABLE; REALLY NICE)
292. Dugan Big Basketweave Swung Vase - White (rare; nice and frosty)
293. DUGAN BIG BASKETWEAVE SWUNG VASE - AMY. (SUPER COLOR AND IRID.; NICE!)
294. Dugan Big Basketweave Swung Vase - Pastel Mari. (light color with bright irid.)
295. DUGAN MINIATURE BEAUTY BUD VASE WITH CRIMPED EDGE - PUR. (RARE AND VERY DESIRABLE; NICE INTERIOR IRID.)
296. DUGAN FORMAL JACK IN THE PULPIT VASE - PUR. (RARE AND VERY DESIRABLE; SUPER IRID.)
297. Dugan Formal Jack in the Pulpit Vase - Lt. Mari. / Clear (very scarce; goes clear half way down)
298. DUGAN FORMAL HATPIN HOLDER - LT. MARI. (RARE AND DESIRABLE; NICE COLOR AND IRID.)
299. Fenton Ribbed Jack in the Pulpit Vase with Enameled Floral Decor. - Blue (unusual and very desirable; nice decor.)
300. N RIBBED JESTER'S CAP JACK IN THE PULPIT VASE - GREEN (VERY SCARCE; SUPER COLOR AND IRID.; NICE)
301. N RIBBED JESTER'S CAP JACK IN THE PULPIT VASE - PUR. (VERY SCARCE; REALLY NICE COLOR AND IRID.)
302. N Ribbed Jester's Cap Jack in the Pulpit Vase - Dk. Mari. (very scarce; really nice color and irid.)
303. N G & C Shot Glass - Pur. (very scarce; nice)
304. N G & C Shot Glass - Dk. Mari. (very scarce; nice)
305. N G & C OVAL BANDED PIN TRAY - IRID. CUSTARD / NUTMEG (RARE AND VERY DESIRABLE; SUPER)
306. N G & C Pin Tray - Green (very scarce; nice color)
307. N G & C Pin Tray - Amy. (scarce; nice color and irid.)
308. N G & C Pin Tray - Dk. Mari. (scarce; nice color and irid.)
309. N G & C Perfume Bottle only (no Stopper) - Mari. (where's the stopper?)
310. N G & C VARIANT BOWL WITH PIE CRUST EDGE AND RIBBED EXTERIOR - BLUE / ELEC. BLUE (VERY SCARCE; NICE COLOR AND BLUE AND RED IRID.)
311. N G & C 8 pc. Table Size Punch Set - Dk. Mari. (very scarce; nice color; could use another base)
312. N DAISY AND DRAPE FTD. FLARED VASE - AQUA OPAL. (RARE AND DESIRABLE; NICE IRID.)
313. N DAISY AND DRAPE FTD. FLARED VASE - DK. MARI. (VERY SCARCE AND DESIRABLE; NICE IRID.)
314. N Daisy and Drape ftd. Turned In Vase - White (scarce; nice and frosty)
315. N WIDE PANEL 4 LILY EPERGNE - WHITE (VERY RARE AND DESIRABLE; NICE COLOR; CHIP BY ONE INSERT ON BASE)
316. Dugan Pulled Loop Swung Vase - Blue (rare base color with a satiny finish)
317. Dugan Pulled Loop Swung Vase - P. Opal. (nice opal. and irid.)
- 850 318. DUGAN APPLE BLOSSOM TWIG FLAT PLATE WITH PLAIN EDGE - PUR. (RARE AND A BEAUT! TOUGH ITEM TO FIND)
319. DUGAN APPLE BLOSSOM TWIG FLAT PLATE WITH BASKETWEAVE EXT. - P. OPAL. (RARE; NICE OPAL. AND MARI. OVERLAY)
- 1100 320. FENTON ENAMELED IRIS. / DIAGONAL BAND TANKARD WATER PITCHER - AMY. (RARE AND VERY DESIRABLE; SUPER COLOR AND IRID.)
321. FENTON ENAMELED IRIS. / DIAGONAL BAND TANKARD WATER PITCHER - DK. MARI. (RARE AND VERY DESIRABLE; NICE COLOR)
322. DUGAN CONSTELLATION STEMMED 6 RUFFLED COMPOTE - AMY. (RARE COLOR FOR THIS PATTERN; REALLY NICE)
323. Dugan Constellation Stemmed 6 Ruffled Compote - Mari. (another scarce color; nice)
324. Dugan Constellation Stemmed 6 Ruffled Compote - White (scarce; super frosty and nice)
- 1300 325. FENTON FLOWERS FTD. ROSE BOWL - P. OPAL. (VERY RARE COLOR FOR THIS ITEM; NICE OPAL.)
- 375 326. FENTON FLOWERS FTD. ROSE BOWL - MARI. / VASE-LINE (ANOTHER RARE BASE COLOR FOR THIS ITEM)
327. Fenton Flowers ftd. Rose Bowl - Red (rare item but very damaged)
328. IMPERIAL OCTAGON STEMMED CORDIAL - DK. MARI. (RARE MINIATURE PIECE OF STEMWARE; NICE)
329. IMPERIAL FLUTE AND CANE STEMMED CORDIAL - DK. MARI. (ANOTHER RARE MINIATURE; NICE)
330. N DRAPERY ROSE BOWL - ICE BLUE (RARE AND VERY DESIRABLE; SUPER SCARCE ITEM - REALLY NICE)
331. N DRAPERY ROSE BOWL - AQUA OPAL. (RARE AND DESIRABLE; NICE OPAL. AND IRID.)
332. N DRAPERY ROSE BOWL - ELEC. BLUE (RARE AND DESIRABLE; HAS SUPER IRID.)
333. N Drapery Rose Bowl - Pur. (very scarce; nice color and irid.)
334. N Drapery Rose Bowl - Mari. (rare and very desirable; super color and irid.)
335. N Drapery Rose Bowl with Plain Edge - White (very scarce; frosty with nice irid.)
336. 7 3/4" N Pillar and Drape 4 ftd. Swung Vase - Custard / Nutmeg (scarce with nice nutmeg)
337. 8 5/6" TALL N DRAPERY VARIANT SWUNG VASE - AMY. (RARE COLOR; NICE IRID.; A TOUGHIE)
338. 8 3/4" Tall N Drapery Variant Swung Vase - Blue (rare color; nice irid.)
339. 8 1/8" Tall N Drapery Variant Swung Vase - Dk. Mari. (very scarce; nice color and irid.)
340. 8 5/8" TALL N DRAPERY SWUNG VASE - AQUA OPAL. (RARE AND DESIRABLE; NICE OPAL. AND IRID.)
341. 7 1/2" TALL N DRAPERY SWUNG VASE - ICE BLUE (RARE COLOR; NICE IRID.)

342. Tall N Drapery Swung Vase - Ice Green (rare; nice irid.)
343. Tall N Drapery Swung Vase - White (very scarce; nice irid.)
344. Tall N Drapery Swung Vase - Blue Opal. (not Carnival; very scarce; nice opal.)
345. **TALL N DRAPERY SWUNG VASE - GREEN (RARE BASE COLOR WITH NICE IRID.)**
346. 8" Tall N Drapery Swung Vase - Blue (scarce; nice; has check in base)
347. 11 1/2" Tall N Drapery Swung Vase - Dk. Mari. (scarce; nice color and irid.)
348. 9" Tall N Fine Rib Swung Vase - Mari. (nice color; scarce)
349. **11 1/2" TALL N FINE RIB SWUNG VASE - ICE GREEN (QUITE RARE; TOUGH TO FIND)**
350. **N TORNADO SMALL SIZE TRI-CORNERED VASE - PUR. (RARE AND VERY DESIRABLE; NICE)**
351. **N TORNADO SMALL SIZE TRI-CORNERED VASE - MARI. (RARE AND VERY DESIRABLE; NICE)**
352. N Grape Arbor Tankard Water Pitcher - Dk. Mari. (nice color; has check in handle)
353. **DUGAN AMARYLIS DOMED FTD. WHIMSEY PLATE - PUR. (RARE AND DESIRABLE; SATINY FINISH)**
354. **DUGAN AMARYLIS DOMED FTD. WHIMSEY PLATE - MARI. (RARE AND DESIRABLE; HAS BRIGHT HIGHLIGHTS)**
- 1700 355. **6 5/8" FENTON PERSIAN MEDALLION FLAT PLATE - ELEC. GREEN (ABSOLUTELY FANTASTIC ITEM; SUPER IRID.)**
356. 6 1/8" Fenton Pine Cone Flared Plate with Wide Panel Ext. - Green (very scarce; nice color and irid.)
357. 6 1/2" Fenton Pine Cone Flat Plate with Plain Ext. - Amy. (scarce; nice satiny finish)
358. 6" Fenton Pine Cone Plate with Plain Ext. - Mari. (nice color)
359. 7 1/2" Fenton Horsehead Medallion Plate - Mari. (scarce; nice color)
- 900 360. **6" FENTON PEACOCK TAIL FLAT PLATE - DK. MARI. (RARE AND VERY DESIRABLE; SUPER, SUPER COLOR AND IRID.)**
361. 6 1/2" Fenton Little Flowers Flat Plate - Dk. Mari. (very scarce and desirable; dark irid.)
362. 7 1/2" Fenton Vintage Grape Flat Plate - Blue (very scarce; nice color and irid.)
- 362a 7 1/2" Fenton Vintage Grape Flat Plate - Amy. (scarce; nice and satiny)
363. 7 1/2" Fenton Vintage Grape Flat Plate - Green (scarce; satiny)
364. 7 1/2" Fenton Vintage Grape Flat Plate - Dk. Mari. (very scarce; nice satiny finish)
365. 6" N "Fern Brand Chocolates" Flat Plate with Basketweave Ext. - Amy. (rare and nice; has chip on collar base)
366. 7 1/2" N Fruits and Flowers Plate with Basketweave Ext. - Pur. (very scarce; nice color and irid.)
367. 7 1/2" N Fruits and Flowers Flared Plate with Basketweave Ext. - Dk. Mari. (very scarce; really nice color and irid.)
368. **6 1/2" DUGAN WISHBONE AND SPADES FLATE PLATE WITH BASKETWEAVE EXT. - PUR. (VERY DESIRABLE; SUPER IRID.)**
369. 6" Dugan Wishbone and Spades Flate Plate with Plain Ext. - P. Opal. (rare and desirable; nice color and irid.)
370. 7 1/2" Dugan Fishscale and Beads Flat Plate - Honey Amber (rare color; has crack)
371. 7 1/2" Dugan Fishscale and Beads Flat Plate - Pur. (rare; nice color and irid.; really nice)
372. 7" Dugan Fishscale and Beads Flat Plate - White (scarce; super irid.)
373. 7" Dugan Fishscale and Beads Flared Plate - Mari. (scarce; nice)
374. 6 1/2" Fenton Sailboats Flat Plate - Dk. Mari. (very scarce; nice color and detail)
375. **7 1/2" DUGAN PERSIAN GARDEN FLAT PLATE WITH BASKETWEAVE EXT. - P. OPAL. (RARE AND DESIRABLE; NICE OPAL.)**
376. 7" Dugan Persian Garden Flat Plate with Pool of Pearls Ext. - White (scarce; nice irid.)
377. 7" Dugan Persian Garden Flat Plate with Basketweave Ext. - Mari. (scarce; satiny)
- 150 378. **7 1/8" TALL DUGAN CIRCLE SCROLL SWUNG VASE - PUR. (RARE AND VERY DESIRABLE; SUPER IRID.)**
379. 7 1/2" Tall Dugan Circle Scroll Swung Vase - Dk. Mari. (rare; nice color)
380. Fenton Miniature Blackberry Compote - White (rare and desirable; frosty color and irid.)
381. Fenton Miniature Blackberry Compote - Amy. (scarce; nice color and irid.)
382. Fenton Miniature Blackberry Compote - Green (scarce; nice satiny finish)
383. Fenton Miniature Blackberry Compote - Blue (nice color)
384. Fenton Miniature Blackberry Compote - Mari. (nice color)
385. **FENTON MINIATURE BLACKBERRY WHIMSEY FLAT PLATE - BLUE (RARE AND DESIRABLE; SATINY IRID.)**
386. 9 3/4" Tall Dugan Lined Lattice Swung Vase - Elec. Pur. (super color and irid.; really nice)
387. 9 3/4" Tall Dugan Lined Lattice Swung Vase - Mari. Opal. (scarce item with light opal. and great irid.)
388. 9 3/4" Tall Dugan Lined Lattice Swung Vase - White (scarce; nice and frosty)
389. **8 1/8" TALL DUGAN ARGONAUT SHELL SWUNG VASE - PUR. (RARE AND VERY DESIRABLE; NICE)**
390. **9" TALL FENTON BUTTERFLY AND BERRY SWUNG VASE - RED (RARE AND VERY DESIRABLE; REALLY NICE COLOR AND IRID.)**
391. **8 7/8" TALL FENTON BUTTERFLY AND BERRY SWUNG VASE - CELESTE BLUE / MARI. (RARE BASE COLOR WITH A MARIGOLD OVERLAY)**
392. **9 1/2" TALL FENTON BUTTERFLY AND BERRY SWUNG VASE - MARI. / VASELINE (VERY RARE BASE COLOR FOR THIS ITEM; NICE)**
393. 9 3/4" Tall Fenton Butterfly and Berry Swung Vase - Green (rare base color with nice irid.)
394. 9 3/8" Tall Fenton Butterfly and Berry Swung Vase - Amy. (very scarce item; satiny irid.)
395. 10 1/2" Tall Fenton Butterfly and Berry Swung Vase - Amber (rare base color; really tough to find)
396. 8 3/4" Tall Dugan Lattice and Points Swung Vase - Pur. (super color and irid.; really nice)
397. 8 1/4" Tall Dugan Lattice and Points Swung Vase - Lavender (very rare base color; nice irid.)
398. 7 5/8" Tall Dugan Lattice and Points Swung Vase - White (frosty and scarce)
399. 11 3/4" Tall Fenton Diamond Rib Standard Swung Vase - Elec. Blue (super color and irid.)
400. 9 7/8" Tall Fenton Diamond Rib Standard Swung Vase - White (very scarce; frosty item - tough to find)
401. **8 5/8" TALL N 4 PILLAR VARIANT SWUNG VASE - AQUA / TEAL (RARE BASE COLOR; REALLY TOUGH ITEM)**
402. 11" Tall N 4 Pillar Swung Vase - Aqua Opal. (rare and desirable; nice color and opal.)
403. 11 5/8" Tall N 4 Pillar Swung Vase - Blue (rare base color; really nice irid.)
404. 12 3/8" Tall N 4 Pillar Swung Vase - Amy. (scarce and nice)
- 1500 405. **10 1/8" TALL FENTON FINE RIB STANDARD SWUNG VASE - AMBER OPAL. (RARE AND VERY DESIRABLE; GREAT ITEM)**
406. **10 5/8" TALL FENTON FINE RIB STANDARD SWUNG VASE - RED (RARE AND DESIRABLE; NICE COLOR)**
407. 9 1/2" Tall Fenton Fine Rib Standard Swung Vase - Aqua / Mari. (very scarce with nice color)
408. 9" Tall Fenton Fine Rib Standard Swung Vase - Green (very scarce base color; really nice)
409. 10 1/2" Tall Fenton Fine Rib Standard Swung Vase - Aqua Opal. (large chunk out of base)
410. **N BEADED CABLE FTD. RUFFLED ROSE BOWL - ICE BLUE (RARE AND DESIRABLE; NICE COLOR AND IRID.)**
411. **N BEADED CABLE FTD. RUFFLED ROSE BOWL - WHITE (VERY SCARCE; FROSTY AND NICE)**
412. **N BEADED CABLE FTD. RUFFLED ROSE BOWL - AQUA OPAL. (RARE AND DESIRABLE; NICE OPAL. AND IRID.)**
413. N Beaded Cable ftd. Ruffled Rose Bowl - Custard / Nutmeg (not iridized; nice nutmeg)
414. N Beaded Cable ftd. Ruffled Rose Bowl - Dk. Mari. (scarce; nice color and irid.)
415. **N BEADED CABLE FTD. RUFFLED ROSE BOWL - LAVENDER (RARE BASE COLOR WITH GREAT IRID.; NICE)**

- ___ 416. N Beaded Cable ftd. Ruffled Rose Bowl - Elec. Blue (super color and irid.; really nice)
- ___ 417. N Beaded Cable ftd. Ruffled Rose Bowl with Floral Int. - Emerald Green (very scarce interior pattern; nice)
- ___ 418. N Beaded Cable ftd. Ruffled Rose Bowl with Floral Int. - Amy. (another scarce example of this item)
- ___ 419. Fenton Orange Tree Standard Flared Mug - Crystal Powder Blue (not iridized; I don't recall seeing another)
- ___ **420. FENTON ORANGE TREE STANDARD FLARED MUG - WHITE (EXTREMELY RARE ITEM; NOT MANY KNOWN; GREAT IRID.)**
- ___ 421. **FENTON ORANGE TREE STANDARD FLARED MUG - GREEN (RARE AND VERY DESIRABLE; GREAT COLOR)**
- ___ 422. Fenton Orange Tree Standard Flared Mug - Mari. / Vaseline (scarce base color; nice)
- ___ 423. Fenton Orange Tree Standard Flared Mug - Amy. (scarce base color; satiny finish)
- ___ 424. Fenton Orange Tree Standard Flared Mug - Aqua / Teal (very scarce base color; really nice)
- ___ **425. FENTON ORANGE TREE LARGE SHAVING MUG - RED SLAG (RARE AND VERY DESIRABLE; NICE ITEM)**
- ___ **426. FENTON ORANGE TREE LARGE SHAVING MUG - RED (RARE AND VERY DESIRABLE; NICE ITEM)**
- ___ **427. FENTON ORANGE TREE STANDARD FLARED MUG - RED (RARE AND DESIRABLE; NICE COLOR)**
- ___ 428. Fenton Orange Tree Large Shaving Mug - Ruby (not iridized; very scarce; nice)
- ___ 429. Fenton Orange Tree Large Shaving Mug - Opale (not iridized; very tough color to find)
- ___ **430. FENTON ORANGE TREE LARGE SHAVING MUG - AQUA / MARI. (RARE COLOR FOR THIS ITEM; REALLY TOUGH)**
- ___ **431. FENTON ORANGE TREE LARGE SHAVING MUG - AMBER (ANOTHER RARE BASE COLOR FOR THIS PATTERN)**
- ___ 432. Fenton Orange Tree Large Shaving Mug - Elec. Blue (super color and bright irid.)
- ___ 433. Fenton Orange Tree Large Shaving Mug - Dk. Mari. (super example)
- ___ 434. N Singing Bird Stippled Handled Mug - Custard / Nutmeg (not iridized; scarce; nice nutmeg)
- ___ **435. N DANDELION HANDLED MUG - CUSTARD / NUTMEG (VERY RARE AND DESIRABLE ITEM; NOT IRIDIZED)**
- ___ **436. N DANDELION HANDLED MUG - AQUA OPAL. (RARE AND DESIRABLE; GREAT COLOR AND OPAL.)**
- ___ **437. N DANDELION HANDLED MUG - BLUE (RARE AND DESIRABLE; REALLY TOUGH COLOR)**
- ___ 438. N Dandelion Handled Mug - Pur. (very scarce and desirable; nice irid.)
- ___ 439. N Dandelion Handled Mug - Dk. Mari. (rare and desirable; nice item)
- ___ **440. N DANDELION HANDLED MUG - GREEN (RARE BASE COLOR WITH NICE IRID. - TOUGH!)**
- ___ **441. N DANDELION HANDLED MUG WITH KNIGHT'S TEMPLAR ADV. - ICE BLUE (RARE AND VERY DESIRABLE; GREAT COLOR AND IRID.)**
- ___ **442. N DANDELION HANDLED MUG WITH KNIGHT'S TEMPLAR ADV. - MARI. (RARE AND DESIRABLE NICE COLOR AND IRID.)**
- ___ **443. N DAISY AND PLUME 3 FTD. ROSE BOWL WITH BERRY INT. - WHITE (RARE AND DESIRABLE ITEM; FROSTY WITH GREAT IRID.)**
- ___ **444. N DAISY AND PLUME 3 FTD. ROSE BOWL WITH BERRY INT. - GREEN (VERY RARE COLOR AND VERY DESIRABLE; REALLY NICE)**
- ___ **445. N DAISY AND PLUME 3 FTD. ROSE BOWL WITH BERRY INT. - ELEC. BLUE (RARE COLOR WITH GREAT IRID. - SUPER!)**
- ___ 446. N Daisy and Plume 3 ftd. Rose Bowl with Berry Int. - Amy. (scarce and desirable; nice irid.)
- ___ 447. N Daisy and Plume 3 ftd. Rose Bowl with Berry Int. - Mari. (very scarce and desirable; nice color)
- ___ 448. Dugan Grape Delight 6 ftd. Round Rose Bowl - Pur. (super irid.)
- ___ 449. Dugan Grape Delight 6 ftd. Round Rose Bowl - White (super irid.; rare shape)
- ___ 450. Dugan Grape Delight 6 ftd. Round Rose Bowl - Dk. Mari. (super irid.)
- ___ **451. FENTON PERSIAN MEDALLION ROSE BOWL - AMY. (RARE AND DESIRABLE; TOUGH TO FIND IN THIS COLOR)**
- ___ 452. Fenton Persian Medallion Hair Receiver - Blue (super example)
- ___ 453. Fenton Persian Medallion Hair Receiver - Dk. Mari. (super irid.; great item)
- ___ 454. Fenton Persian Medallion Rose Bowl - Dk. Mari. (super irid.; really nice item)
- ___ 455. Fenton Persian Medallion Rose Bowl - White (rare and has really nice irid.)
- ___ 456. N Fine Cut and Roses ftd. Rose Bowl with no Collar Base - Green (rare variation; nice color)
- ___ 457. N Fine Cut and Roses ftd. Rose Bowl with no Collar Base - Amy. (rare variation; nice color)
- ___ 458. N Fine Cut and Roses ftd. Rose Bowl - Custard / Nutmeg (not iridized; scarce)
- ___ 459. N Fine Cut and Roses ftd. Rose Bowl - Mari. (nice color)
- ___ **460. N FINE CUT AND ROSES FTD. ROSE BOWL WITH FANCY INT. - AQUA OPAL. (EXTREMELY RARE AND A BEAUT; NICE COLOR AND OPAL.)**
- ___ 461. N Fine Cut and Roses ftd. Rose Bowl with Fancy Int. - Ice Blue (very scarce with nice irid.)
- ___ **462. N FINE CUT AND ROSES FTD. ROSE BOWL WITH FANCY INT. - WHITE (VERY SCARCE WITH NICE IRID.)**
- ___ **463. N FINE CUT AND ROSES FTD. ROSE BOWL WITH FANCY INT. - HOREHOUND (RARE BASE COLOR; NICE)**
- ___ 464. N Fine Cut and Roses ftd. Rose Bowl with Fancy Int. - Pur. (very scarce; nice irid.)
- ___ **465. N FINE CUT AND ROSES FTD. ROSE BOWL WITH FANCY INT. - GREEN (VERY SCARCE; NICE IRID.)**
- ___ 466. N Fine Cut and Roses ftd. Rose Bowl - Pur. (nice color and irid.)
- ___ **467. FENTON 2 ROW OPEN EDGE 2 SIDED BASKET - ICE BLUE (RARE AND VERY DESIRABLE; SUPER)**
- ___ **468. FENTON 2 ROW OPEN EDGE 2 SIDED BASKET - ICE GREEN (RARE AND VERY DESIRABLE; REALLY NICE)**
- ___ **469. FENTON 2 ROW OPEN EDGE 2 SIDED BASKET - WHITE (VERY SCARCE AND VERY DESIRABLE; FROSTY AND NICE)**
- ___ **470. FENTON 2 ROW OPEN EDGE 2 SIDED BASKET - REVERSE AMBERINA OPAL. (VERY SCARCE AND VERY DESIRABLE; SUPER TOUGH ITEM!)**
- ___ **471. FENTON 2 ROW OPEN EDGE 2 SIDED BASKET - GREEN (RARE BASE COLOR - LOOKS DARK)**
- ___ **472. FENTON 2 ROW OPEN EDGE 2 SIDED BASKET - BLACK (RARE AND DESIRABLE; REALLY TOUGH ITEM)**
- ___ 473. Fenton 2 Row Open Edge 2 Sided Basket - Odd Smoke Blue (odd base color - a bit different)
- ___ 474. Fenton 2 Row Open Edge 2 Sided Basket - Blue (nice color)
- ___ **475. FENTON 2 ROW OPEN EDGE 2 SIDED BASKET - RED (RARE AND DESIRABLE; NICE COLOR)**
- ___ 476. Fenton 2 Row Open Edge 2 Sided Basket - Teal / Aqua (rare base color - tough!)
- ___ 477. Fenton 2 Row Open Edge 2 Sided Basket - Lt. Aqua / Mari. (odd base color)
- ___ 478. Fenton 2 Row Open Edge 2 Sided Basket - Amber. / Mari. (rare abse color; nice irid.)
- ___ 479. Fenton 2 Row Open Edge 2 Sided Basket - Mari. / Vaseline (very scarce and desirable; nice)
- ___ 480. Fenton 2 Row Open Edge 2 Sided Basket - Lt. Aqua (scarce color)
- ___ 481. Fenton 2 Row Open Edge 2 Sided Basket with Brand Adv. - Mari. (scarce item)
- ___ 482. Fenton 2 Row Open Edge 2 Sided Basket with Millers Adv. - Mari. (cracked)



Burns Auction Service

P.O. Box 608
Bath, New York 14810

First Class
US Postage
PAID
Permit No. 7
Hammondsport, NY

LEE MARKLEY
BOX 306
MENTONE IN 46539

