

AIR CAPITAL CARNIVAL GLASS CONVENTION AUCTION

👉 Held IN Wichita, Kansas

Friday Evening, October 19, 2001 - 7:00 p.m. C.D.T.

Saturday, October 20, 2001 - 9:00 a.m. C.D.T.

- 👉 World Class Club, A World Class Auction
- 👉 And Lots of Midwestern Hospitality!!

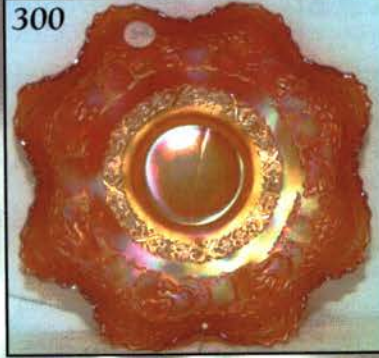
373



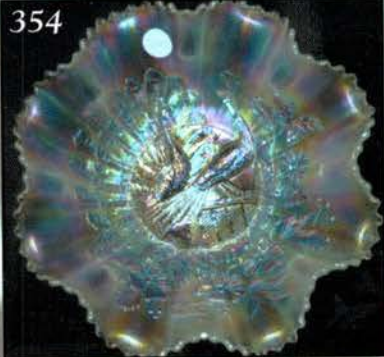
218



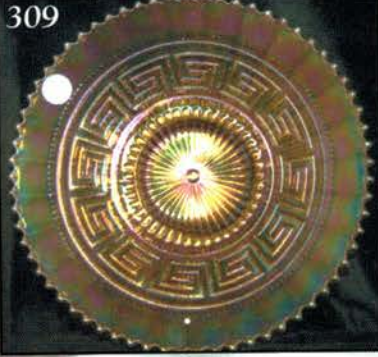
300



354



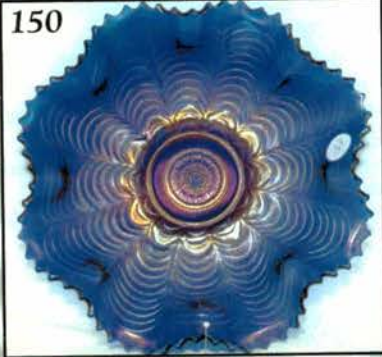
309



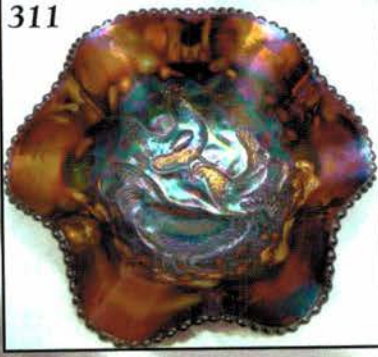
321



150



311



267




Held By the Mickey Reichel Antique & Auction L.C.


Office: 660-882-5292 • Home: 660-882-5283


👉 Direct e-mail: mreichel@undata.com

NEW WEB SITE ON: <http://www.yourauctionpage.com/reichel>



 **Holiday Inn • 5500 West Kellogg St. • Wichita, Kansas**
Reservations 800-255-6484 or 316-943-2181

 **Air Capital Convention Information: Contact Don Kime - 316-733-8424**
Preview: Friday 5:00 to 7:00 p.m. • Saturday 7:30 a.m. • CASH or CHECK ONLY

 **WEBSITE: www.yourauctionpage.com/reichel**

Auction Consists of Rarity, Great Irid. and Variety


ABSENTEE BID POLICY:

E-MAIL AND WRITE IN BIDS: If you are unable to attend the auction, we will be happy to accept absentee bids which must be received by Wednesday, OCTOBER 10, 2001. Don't Delay.

FOR AUCTION PRICE RESULTS: Send \$3.00 and Large S.A.S.E. to 516 Third Street, Boonville, MO 65233-1536


PLEASE NOTE: There is a **\$5 handling charge for each successful bid which will be added to the selling price** for all write-in bids. This is in addition to the cost of postage, insurance and packing. Your write-in bid will be entered just as if you are present and bidding. **Successful bidders will be notified in 1 to 3 days by the auctioneer (so be sure to include your phone number).** Direct mail bids to Auctioneer **Mickey Reichel, 516 Third Street, Boonville, MO 65233-1536.** Terms: Cash or Check accepted with proper I.D. and Social Security Number and References. Announcements made day of the auction supercede all printed material. Not Responsible for Accidents or Sold Items.

No return on any items once they leave the Auction Center (No Exceptions).****

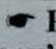
 **Call for additional information: 660-882-5292 days or 660-882-5283 evenings before 9:00 p.m.**

FAX: 660-882-5292 (evening hours start FAX transmission after beep)

MAIL BIDS: Items are bid on in perfect condition with average or above iridescence OR as listed in the brochures. Bids will not be carried out when damage on an item has been found during the auction.

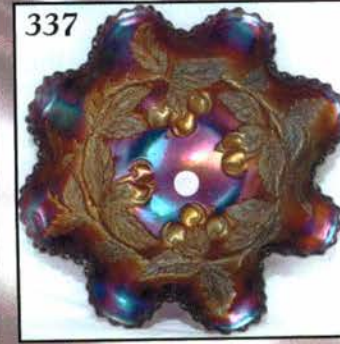
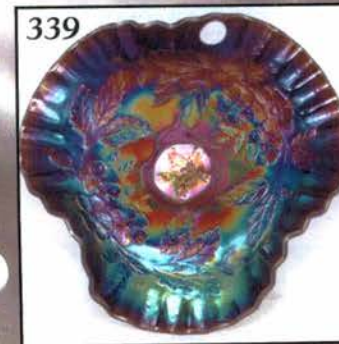
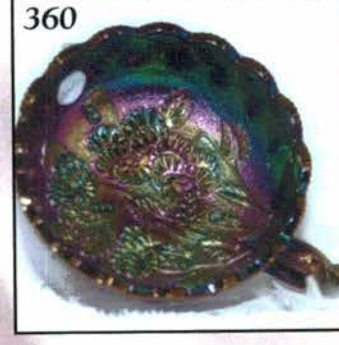
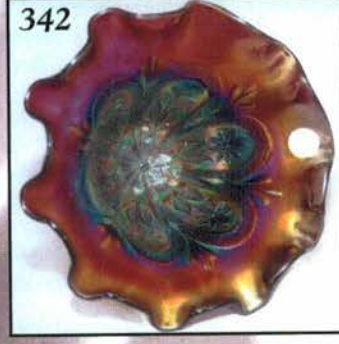
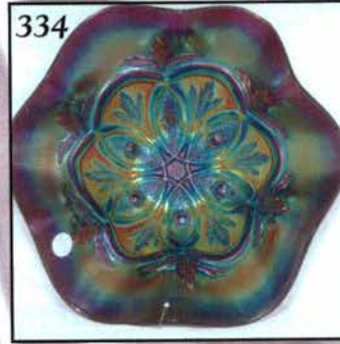
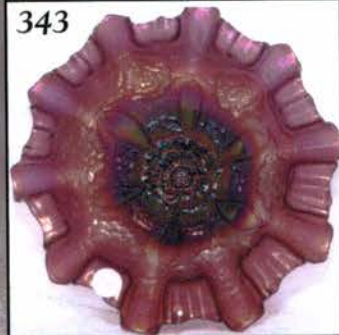
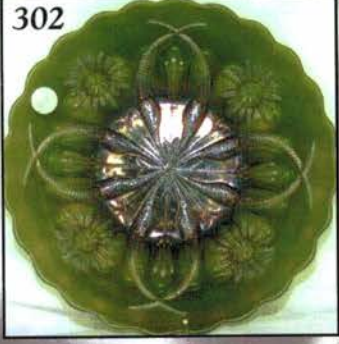
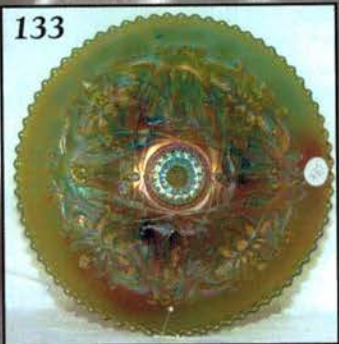
 **PEOPLE PRESENT AT AUCTION ARE RESPONSIBLE FOR FINDING ANY PINHEADS, WEAR, SPOTTINESS, MANUFACTURER'S DEFECTS OR ANY OTHER MINOR FLAWS, ETC. *******

 **NOTE: Read each line, as we have accentuated the type of no particular piece, all are special.**

 **PREVIEW 5:00 TO 7:00 P.M.**
FRIDAY'S CONTEMPORARY 1ST SESSION
STARTS AT 7:00 P.M.

- _____ 1. Contemporary-B - St. Clair Inverted Fans Toothpick Holder
- _____ 2. Contemporary-G - Sgnd. IG Three In One Toothpick Holder - Interior Crack
- _____ 3. Contemporary-G - Joe St. Clair Holly Band Toothpick Holder - Scarce Color
- _____ 4. Contemporary-Dark M - Summit Holly Band Toothpick Holder
- _____ 5. Contemporary-Scarce Amber - Signed IG Octagon Toothpick Holder
- _____ 6. Contemporary-Em. Green - Joe St. Clair Three Swans Toothpick Holder
- _____ 7. Contemporary-Red - Bob St. Clair Bicentennial Nixon Toothpick Holder
- _____ 8. Contemporary-Scarce G - Joe St. Clair Inverted Fans Toothpick Holder

- _____ 9. Contemporary-B - Two Bunnies Toothpick Holder - Egg Cup Shape - Signed RW
- _____ 10. Contemporary-Red Amberina - St. Clair Kingfisher Toothpick Holder
- _____ 11. Contemporary-Red - Joe St. Clair Square Bicentennial Toothpick Holder
- _____ 12. Contemporary-Red - Signed IG - Imperial Fashion Toothpick Holder
- _____ 13. Contemporary-B - Joe St. Clair Diamond and Hobs Tumbler Shape Toothpick Holder
- _____ 14. Contemporary-P - Joe St. Clair Inverted Fans Toothpick Holder
- _____ 15. Contemporary-Pastel Yellow - Lg. Butterfly Ornament - Sgnd. Westmoreland
- _____ 16. Contemporary-W - Terry Crider Daisy and Button JIP Spittoon 62/150 - Very Scarce
- _____ 17. Contemporary-AO - LeVay Butterfly and Berry Small Basket - 13/95 - Scarce
- _____ 18. Contemporary-Plum Opal - Fenton Butterfly and Berry Small Basket
- _____ 19. Contemporary-IB - Fenton Daisy and Pearls Rose Bowl



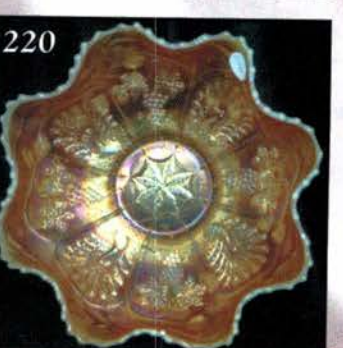
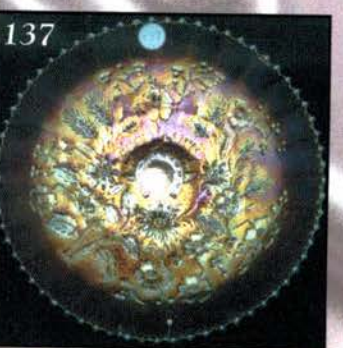
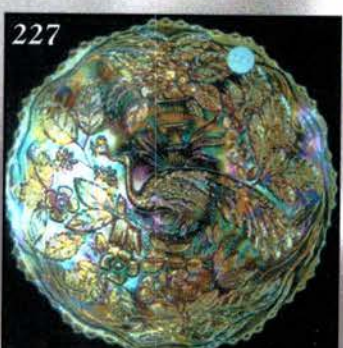
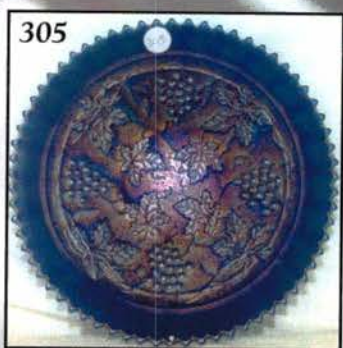
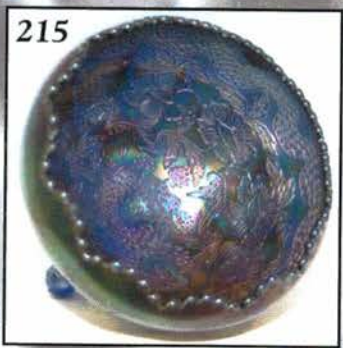
20. Contemporary-Cobalt B - Sgnd. IG - Three Swans Vase - **RARE**
21. Contemporary-P - Fenton Wild Strawberry/Floral Panels Lg. Compote
22. Old - BO - Hilltop Vines Novelty Chalice
23. Contemporary-P - Fenton Fish Paperweight
24. Contemporary-G - Joe St. Clair Owl Paperweight
25. Contemporary-Vas. - Daisy and Button Basket - Non- Irid.
26. Contemporary-AO - LeVay Inverted Strawberry JIP Whimsey Compote - Butterscotch Overlay
27. Contemporary-AO - LeVay Inverted Strawberry Ruffled Whimsey Compote - Butterscotch Overlay
28. Contemporary-Red - Mosser - Inverted Thistle Butter Dish - Non-Irid.
29. Contemporary-Red - Mosser - Inverted Thistle Milk Pitcher - Non-Irid.
30. Contemporary-Red - Mosser Inverted Thistle Tumbler - Non-Irid.
31. Contemporary-Green Opal - Inverted Thistle Tumbler
32. Contemporary-IB - Sgnd. Westmoreland Inverted Thistle Tumbler
33. Contemporary-Plum Vas. - Inverted Strawberry Small Ruffled Compote
34. Contemporary-Vas. Opal - Inverted Strawberry Small Ruffled Compote
35. Contemporary-Lav. - LeVay 1981 Grape and Cable Lg. Ruffled Whimsey Spittoon - 11/200
36. Contemporary-Lt. Lav. Opal - Fenton Persian Medallion Compote
37. Contemporary-Red Amberina - Fenton Persian Medallion Compote
38. Contemporary-Red - Wreath of Roses Lg. Compote
39. Contemporary-P - Mosser Cherry and Cable Butter Dish
40. Contemporary-P - Mosser Cherry and Lattice 3 pc. Table Set - Butter, Sugar and Creamer
41. Contemporary-B - 2000 HOACGA Orange Tree Wine Glasses - Choice A, B or C
42. Contemporary-Vas. - Mkd. ALIG Texas Boots - Choice A or B
43. Contemporary-B - Mkd. ALIG Texas Boots - Choice A or B
44. Contemporary-Red - 1994 ICGA Diamond and Rib JIP Squatty Hat
45. Contemporary-Pastel BO - 1998 SDCCGC 7" Diamond and Rib Vase
46. Contemporary-Dk. BO - Westmoreland Strutting Peacock Covered Creamer
47. Contemporary-Honey Amber - 1993 ICGA Frolicking Bears Texas Shot Glass
48. Contemporary-Vas. 1981 ACGA Beaded Shell Mug
49. Contemporary-Plum - Fenton Butterflies 4-Sided, 2 Handled Bon-Bon
50. Contemporary-Red - 1973 HOACGA 6½" Good Luck Plate
51. Contemporary-Red - 1991 HOACGA 6½" Peacock and Dahlia Plate
52. Contemporary-Pink - Smith Hobstar and Diamond 8" Handled Basket
53. Contemporary-Red - Moon and Stars 7" Banana Shape Basket
54. Contemporary-Red - 1978 HOACGA Corn Vase
55. Contemporary-PO - 1981 LLCGA Lily of the Valley Bell - Flat, Whimsey Shape
56. Contemporary-Red - 1985 HOACGA Bell - Whimsey Rolled Edge
57. Contemporary-B - 1975 ACGA Holly Bell

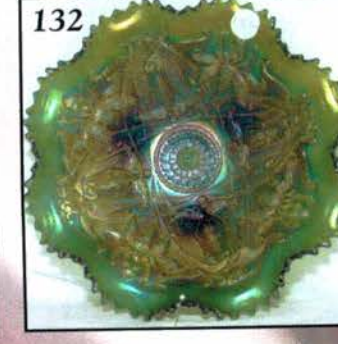
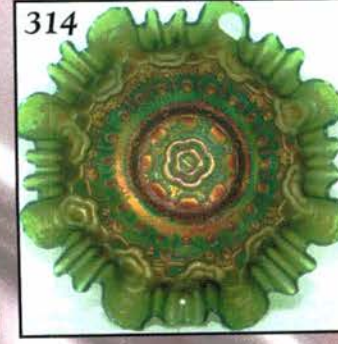
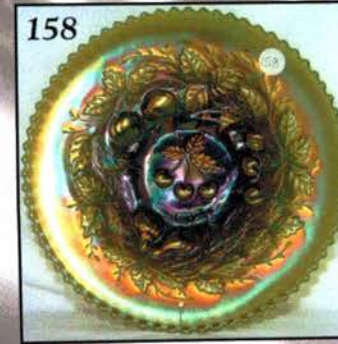
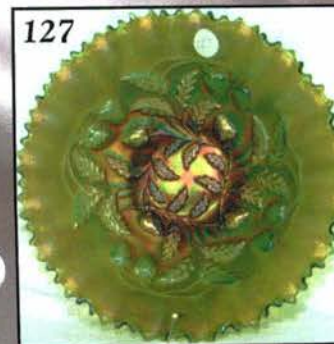
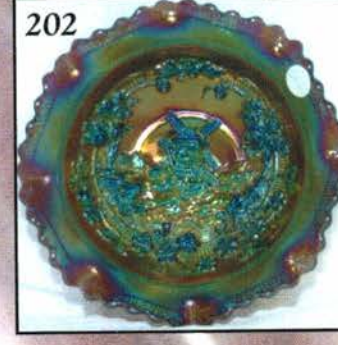
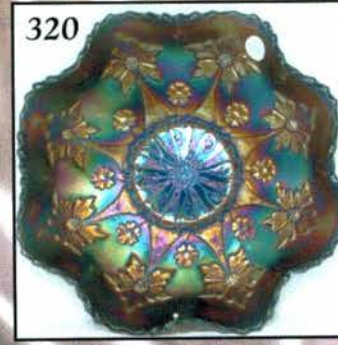
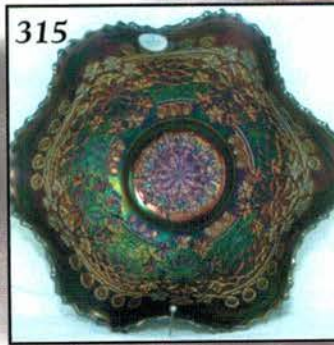
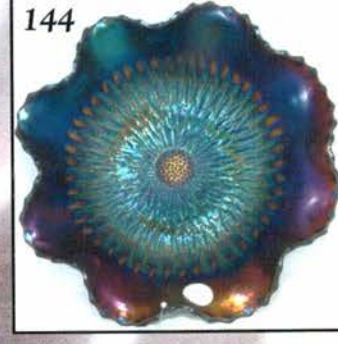
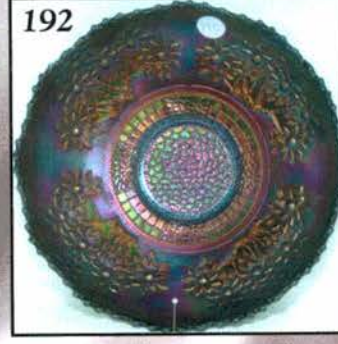
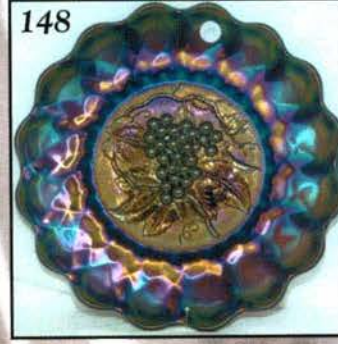
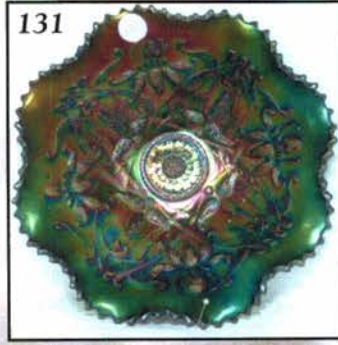
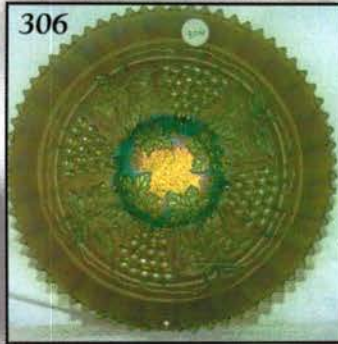
58. Contemporary-P - Daisy Cut Bell
59. Contemporary-Caramel Slag - Joe St. Clair Min. Wheel Barrow Salt - Non-Irid.
60. Contemporary-B - Intaglio - Sgnd. Anton Strawberry Ornament
61. Contemporary-Em. G - Cherry and Cable Mini Punch Bowl w/6 Cups & holders
62. Contemporary-Tomato Slag - Westmoreland Sleigh Only
63. Contemporary-Vas. - Westmoreland Large Shell
64. Contemporary-P - Westmoreland Peacock on Fence 9½" Rd. Bowl - Intaglio Butterflies Ext.
65. Contemporary-Seafoam - Hearts and Flowers Lg. Basket - Fenton Signature Series
66. Contemporary-Amber - Inverted Thistle Butter Dish
67. Contemporary-AO - LeVay Grape and Cable Lg. Spittoon - #11 of 50
68. Contemporary-Vas. Opal - 1999 TCGC Fine Cut and Grapes Rose Bowl
69. Contemporary-AO - Thumbprint and Oval LLCGC Vase
70. Contemporary-Plum - Thumbprint and Oval LLCGC JIP Vase
71. Contemporary-Opaque Pink Opal - Thumbprint and Oval LLCGC Vase
72. Contemporary-Marigold Opal - Thumbprint and Oval LLCGC Vase
73. Contemporary-AO - Thumbprint and Oval LLCGC Vase
74. Contemporary-Red - 1982 ICGA Frolicking Bears Whimsey Basket - Rare
75. Contemporary-P - Fenton Butterfly Ornament
76. Contemporary-B - L.E. Smith Lg. Hobstar Banana Shape Basket
77. Contemporary-P - Sm. Westmoreland Checkerboard Cup and Saucer
78. Contemporary-Em. G - Fenton CCGA Floral Bell
79. Contemporary-Pink Stretch - Fenton 75th Anniv. Dolphin Fan Vase
80. Contemporary-I.B. - Signed N Grape Delight Nut Bowl
81. Contemporary-AO - Fenton 11¼", 3 Ftd. Tall Drapery Vase - Butterscotch Overlay
82. Contemporary-Pink - Praying Angel 3½" Paperweight/Figurine
83. Contemporary-Clear - Hand-Painted Fenton Egg on Stand - Iridized

**9:00 A.M. SATURDAY
DAY 2 - SECOND SESSION**

84. M - N Daisy and Plume Pedestal Rose Bowl - Nice One
85. M - 10¼" Fenton Six Ruffle Vintage Bowl - Beautiful
86. M - Birds and Grapes Wall Pocket
87. Super G - 10", 6-Ruffle Feathered Serpent Bowl
88. Dark G - Fenton Lotus and Grape Vt. Bon Bon
89. B - 6", 2-Row, O.E. Basket - 2-Sides Up - Above Average Color
90. Scarce M - Wine and Roses Pitcher - 8½" Tall
91. M - Wine and Roses Wine Goblet
92. Cobalt B - Orange Tree Wine Goblet - Multi Electric
93. RARE I.B. - N Beaded Cable Rose Bowl
94. M - 8½", 8-Ruffle Plaid Bowl - Above Average
95. M - Ball Ftd. 9" DEEP Chrysanthemum/Windmill Fruit Bowl
96. Great A - 9" Fenton Grape and Cable Spat Ftd. Plate
97. Dark M - 8½", 8-Ruffle Feathered Arrows Bowl - Unusual and Great Example

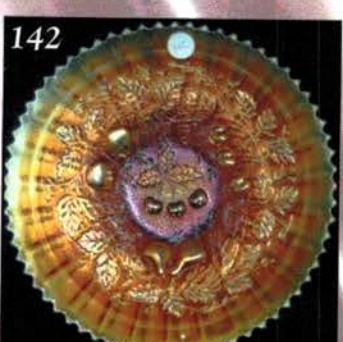
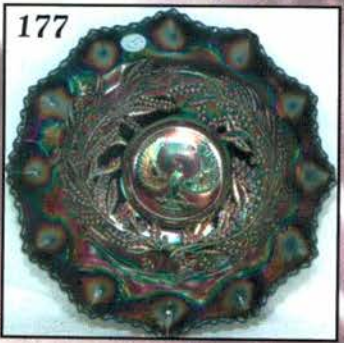
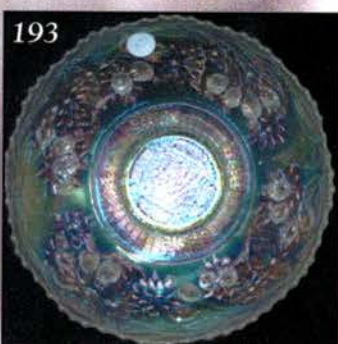
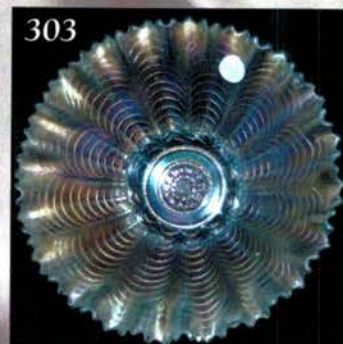
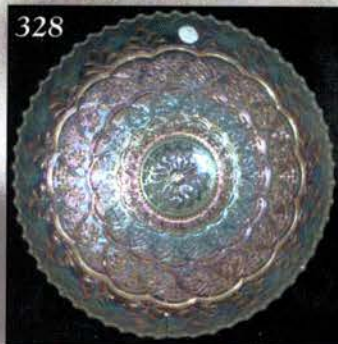
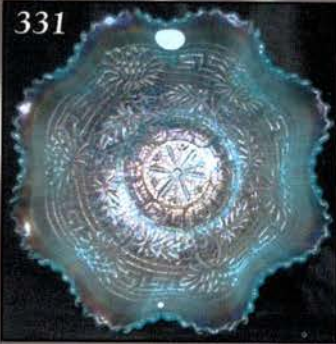
98. **Dark G - 5" Scarce Fenton Stippled Coin Dot Rose Bowl**
99. Scarce M - Spat Ftd. Plain Top Two Flowers Rose Bowl
100. **P.O. - Dugan Ruffled Coin Spot Compote**
101. P.O. - Banana Shape, Ruffled Dugan Honeycomb and Beads Bowl
102. **Rich PO - 5" Rd. Smooth Edge Deep Four Flowers Bowl**
103. P - Dugan 10-Ruffle Single Lily Fishnet Epergne
104. **Radium Elec B - Fenton Vintage Grape Fernery**
105. Radium Pumpkin M - Fenton Vintage Grape Fernery
106. **P - Singing Birds Radium Electric Tumbler**
107. **RARE** - Imp. Blue Violet Fieldflower Tumbler
108. **Fantastic Smoke - Imp. Soda Gold Tumbler**
109. Radium M - Old, Stippled Robin Tumbler - Great Detail
110. **P - N Greek Key Tumbler - Multi Electric**
111. Dark M - Fenton Waterlily and Cattails Tumbler
112. **Enameled Swallow M Flashed Tall Tumbler - Seldom Offered**
113. Deep B - Dugan God and Home Tumbler - Way Above Average
114. **Dark B - Daisy and Lattice Multi-Electric Tumbler - Scarce**
115. Dark B - Fenton Butterfly and Berry Tumbler - Extra Nice
116. **RARE Amber - Dugan Floral and Grape Tumbler**
117. W - Dugan Floral and Grape Tumbler - Heavy Blues and Pinks
118. **Dark Radium M - Dugan Floral and Grape Tumbler**
119. Multi Electric P - Dugan Peacock at Fountain Tumbler
120. **G - N Wishbone Tumbler - Great Find!**
121. P - N Wishbone Tumbler - Great Find!
122. **Dark M - Wishbone Tumbler - Great Find!**
123. M - Tri-Corner Circle Scroll Whimsey Hat from Tumbler - Super Yellow and Pink Interior
124. **Deep M - Vining Twigs or Lattice and Points 7", 8-Ruffle Whimsey Bowl - Daisy Center**
125. Pumpkin M - PCE **N** Three-Fruits Bowl - BW Ext. - **OUTSTANDING**
126. **Multi Electric P - PCE N Three-Fruits Bowl - BW Ext.**
127. **GREAT** G - **N** PCE Strawberry Bowl - Smooth Ext.
128. **Dark M - N Drapery Rose Bowl - Seldom Offered**
129. Great Pastel M - **N** Poppy Pickle Dish - Pretty Pinks and Yellows
130. **G - N Ruffled Good Luck VARIANT Bowl - BW Ext. (Fewer Berries)**
131. **SUPER** P - **N** Ruffled Ftd. Wishbone Bowl - Outstanding Iridescence
132. **G - N Ruffled Ftd. Wishbone Bowl - Yes! - Electric Iridescence**
133. **RARE** G - **N** Ftd. 8 1/2" Multi Electric Wishbone Plate - One of About Seven
134. **Scarce Teal - 8" Ruffled Imp. Shell and Sand Bowl**
135. P - 9", 8-Ruffle Imp. Super Electric Radium Pansy Bowl
136. **Gorgeous, ULTRA RARE** Electric P - **Imp. Poinsettia Milk Pitcher - Int. Crack**
137. **RARE** - Flat, Pastel M 9 1/2" Stippled Good Luck Plate - Rib Ext.
138. **Pinkish M - N Stippled, Ruffled Good Luck Bowl - Rib Ext. - Super Satin**
139. Lav. - PCE **N** Peacocks Bowl - Rib Ext. - Purple and Gold Irid.
140. **Dark G - 8 1/2", 8-Ruffle Fenton Holly Bowl**
141. Extra Nice M - 9 1/2" Fenton Holly Plate
142. **M - 9" N Stippled Three-Fruits Plate - Rib Ext. - Great Fruit**
143. Pumpkin M - 9" **N** Strawberry Plate - BW Ext.
144. **Deep P - Spat. Ftd. N Multi-Electric Sunflower Bowl - WOW!**
145. **ULTRA SCARCE** - M - 9 1/2" 3 in 1 Edge, **Ball Ftd.** Ten Mums Bowl - Beautiful
146. **Outstanding Dark B - 8 1/2" CRE Collar Base Ten Mums Bowl - A Dandy**
147. Scarce M - Imp. Flute and Cane Low, Stemmed, Oval, Two-Handed Compote
148. **Vibrant P - 11 1/2" Imp. Heavy Grape Chop Plate**
- 148A. **G - Fenton Butterfly and Berry Ftd. Spooner - Very Difficult to Find**
149. **TRUE TEAL** - 8 1/2" Rd. Lg. Ftd. Butterfly and Berry Master Bowl - One of a Kind?
150. **ANOTHER RARITY** - B - 8 1/2", 8-Ruffle **N** Nippon Bowl - **Find Another!**
151. G - **N** Blossomtime Compote - Outstanding
152. **M - Mlb. 9 1/2" ICS Peacock at Urn Bowl - Nice Satin Example**
153. M - **N** Low 10 1/2" ICS Peacock at Urn Bowl - Greens, Pinks, Yellows
154. **Dark B - 9", 6-Ruffle Fenton Captive Rose Bowl - Lots of Irid.**
155. **SCARCE** Rich Amber - 8 1/2" ICS Collar Base Dragon and Lotus Bowl - Pretty
156. **A - 9", 8-Ruffle N Spat Ftd. Three Fruits Medallion Bowl - Meander Ext.**
157. G - 10 1/2" Low 6-Ruffle Fenton Little Flowers Bowl - Superior Quality
158. **G - 9" N Three Fruits Plate - Smooth Ext. - Beautiful and NO Wear on Fruits**
159. M - 6 1/2" Persian Garden Plate - Basketweave Ext.
160. **M - 6 1/2" Persian Medallion Plate - Plain Ext. - Radium Silver**
161. M - 6" Persian Medallion Plate - 4-Sides Up
- 161A. G - 6", 6-Ruffle Persian Medallion Bowl - Scarce Color
162. **W - 7" Low Ruffle Grapevine Lattice Plate - Frosty**
163. Dark B - 6 1/2" Rd. Pine Cone Plate - Extra Pretty
164. **Radium M - 9" Deep, Flared Field Thistle Bowl - Unusual Shape**
165. M - 7 1/2", 6-Ruffle Collar Base Horse Medallion Bowl - Popular Pattern
166. **Scarce A - 9", 3 in 1 Edge Fenton Ribbon Tie Bowl**
167. Flashed M - Bo-Peep Mug - Top Notch Example
168. **B - 4 1/2" Kittens Banana-Shape Plate - Two-Sides Up**
169. P - 5 1/2", 6-Ruffle Scroll Embossed Bowl/File Ext. - Super Electric
170. **BO - Westmoreland Radium Pearly Dots Compote - Very Scarce**
171. Clear Ext. - Sm. Persian Medallion Ruffled Compote - W. Int. - **UNIQUE!**
172. **Dark M - Sowerby Diving Dolphins 7 1/2", 16-Ruffle Scroll Embossed Nut Bowl**
173. Australian - M - 9 1/2", 12-Ruffle Sm. Kangaroo w/Branch Bowl - Super Example
- 173A. Australian - BA - 9 1/2", 16-Ruffle Lg. Kangaroo Bowl - Super Example
174. **Australian - BA - 9 1/2", 16-Ruffle Sm. Kangaroo w/Branch Bowl - Super Example**
175. Australian - BA - 9 1/2", 15-Ruffle Swan Bowl - Super Example
176. **Australian - BA - 9 1/2", 12-Ruffle Kookaburra w/Wartah Flower & Flannel Flower Bowl**
177. Australian - BA - 9 1/2", 12-Ruffle Shrike w/Golden Wattle Bowl - Super Ex.
178. Australian - **RARE AQUA** - 12-Ruffle Plain Int. Hobnail Compote - M. Overlay on Top





179. Australian - BA - 7½" Butterfly Bush and X-mas Bells Salver - Super Ex.
180. Australian - BA - 10½" Mid-Size Gum Tips Vase - ¾" Base, 5¼" Top
181. M - My Lady's Powder Jar - Dark and Nice
182. Magnificent P - 11" Diamond and Rib Vase - 4¼" Opening
183. B - Rustic 9" Vase - 5" CRE Top
184. Smoke - Mini 7¼" Imp. Morning Glory Vase - Very Nice
185. P - N Beaded Cable Rose Bowl - Rayed Int. - Beautiful
186. GREAT RED - 5¼" JIP 2-Row, O.E. Hat
187. RARE Teal/Aqua - Mlbg. Diamonds Tumbler - Very Few Known
188. Vas. - 5¼", 6-Ruffle, 2-Row, OE Basketweave Hat - M. Overlay
189. P - N Fine Cut and Roses Rose Bowl - Plain Int. - Ft. Chipped
190. A - 8" ICS Orange Tree Bowl - Scarce Shape and Color
191. G - 8" ICS Orange Tree Bowl - Scarce Shape and Color - Trunk Center
192. B - 8" ICS Orange Tree Bowl - Scarce Shape and Color - Outstanding
193. W - 8" ICS Orange Tree Bowl - Trunk Center - Outstanding Blue Irid.
194. M - 8" ICS Orange Tree Bowl - Super Pinks, Blues and Yellows
195. M - 10¼", 3 in 1 Edge Mlbg. Seaweed Bowl - Super Satin
196. Vas. - 10¼" Fenton Fine Rib Vase
197. Rich M - 8" Parlor Panels Vase - ¾" Base, 5¼" Top - A BEAUTY
198. M - 6½" Squatty N Leaf Columns Vase - ¾" Base, 4¼" Top
199. Top of the Line A - 6" Eat Paradise Sodas Advertising Plate
200. A - 6½" N Handgrip Fern Brand Chocolates Advertising Plate - Radium and Nice
201. Stretchy M - 6¼" Little Flowers Flat Plate - Beautiful
202. P - 8", 8-Ruffle Imp. Windmill Bowl - Super Electric
203. Pumpkin M - Radium Little Corn Bottle - Outstanding Example
204. Aqua - 5¼", 6-Ruffle Ftd. Panther Bowl - Much Rarer than Red - Fantastic Example
205. P - 5¼" CRE Rd. Dugan Petal and Fan Berry Bowl
206. PO - Dugan 10½" Four Flowers Chop Plate - More than 2" of Opal
207. PO - 6¼" Four Flowers Plate - Smooth Ext.
208. A - Radium 7¼" Fenton Vintage Grape Flat Plate - Super
209. B - 7¼" Fenton Vintage Grape Flat Plate - Great
210. G - 7¼" Fenton Vintage Grape Flat Plate - Also Very Nice
211. M - 7¼" Fenton Vintage Grape Flat Plate - Satin Pinks and Blues
212. Vas. - 7", 6-Ruffle Fenton Vintage Grape Bowl - M. Overlay
213. P - 7¼" N Fruits and Flowers Plate - BW Ext. - Violet Tints
214. B - Flat 9¼" Fenton Peacock at Urn Plate - Marvelous Greens, Yellows and Blues
215. Electric B - Fenton Two Flowers Giant Rose Bowl
216. Vas. IG - 5¼" Rd. 2-Row OE Basketweave Bowl - A Toughie!
217. Emerald G - Fenton 9", 3 in 1 Edge Holly Bowl
218. Red Amberina - 9", 8-Ruffle Fenton Holly Bowl - Red Irid.
219. Vas. - 8¼" Ruffled, Collar Base Peacock and Grape Bowl
220. Marigold w/White Opal Trim - 8¼" Collar Base, 8-Ruffle Peacock and Grape Bowl
221. Deep B - Fenton Miniature Blackberry Compote - Strong Strike
222. Lime Vas. - Imp. 6¼" Flat Grape Plate - Mirror Like Finish
223. Dk. B - 6¼", 6-Ruffle Fenton Peacock Tail Bowl - Very Pretty
224. A - 6" Fenton Peacock Tail Tri-Corner Plate with Starred Base
225. A - 6¼" Mlbg. Peacock Plate - VERY RARE - Great Color On Bird!
226. G - 5¼" Mlbg. Peacock ICS Bowl - Radium Beauty
227. Pastel M - 9¼" Fenton Peacock at Urn Plate - Super Yellows, Pinks and Blues
228. B - 9", 6-Ruffle Orange Tree Bowl with Trunk Center - Multi Electric
229. Pastel M - 6¼" Vining Twigs or Lattice Points Ruffled Whimsey Bowl - Daisy Center
230. Lav. - N Fruits and Flowers Stemmed Bon Bon - Beautiful and Scarce
231. Dark M - 8¼" PCE N Strawberry Bowl - BW Ext.
232. Beautiful M - JIP, Ftd. Horse Medallion Bowl
233. Vas. - JIP, Ftd. Horse Medallion Bowl - Always in Demand
234. RARE TEAL - JIP, Ftd. Horse Medallion Bowl
235. Soft B - 7¼", 8-Ruffle Ball Ftd. Horse Medallion Bowl - Extra Nice
236. Amethyst - 6¼" ICS Collar Base Horse Medallion Bowl - Tough Shape and Color
237. M - 7" Low ICS Collar Base Horse Medallion Bowl - Scarce Shape
238. RARE M - 7¼" Lions Plate - Excellent Detail and Radium Finish
239. RARE G - N Rd. Bushel Basket with Smooth Handles
240. G - N Rd. Bushel Basket - A Nice One
241. TOTALLY DIFFERENT - Amber N Rd. Bushel Basket with Green Tinted Feet, and it is Beautiful!
242. Lime IG - N Rd. Bushel Basket - Great!
243. Beautiful B - N Rd. Bushel Basket - Lots of Electric Blue Highlights
244. P - N Rd. Bushel Basket - Swirl/Slag Effect In Base
245. Pastel AO - N Rd. Bushel Basket
246. Rich M - N Rd. Bushel Basket
247. Blue Opal - N Rd. Bushel Basket - Non-Irid.
248. W - N 8-Sided Bushel Basket - Frosty with Blue and Green Irid. In Center
249. Radium A - Beaded Shell Mug - Extra Nice
250. Pastel M - Fishermans Mug - Soft Blues, Greens, Yellows
251. P - Fishermans Mug - Always Desirable
252. P - N Singing Birds Mug
253. M - Scarce Stippled N Singing Birds Mug
254. Rich M - N Singing Birds Mug
255. M - N Stippled Dandelion Mug
256. B - N Stippled Dandelion Mug - Tough to Find
257. G - N Stippled Dandelion Mug - Tough to Find
258. G - N 7¼" 6-Ruffle Grape and Cable Bowl - Leaf Center - BW Ext.
259. Lav. - 9¼" Fenton Holly Plate - Gold and Silver Finish
260. B - 9¼" Captive Rose Plate - Mirrored Silver Treatment - Different!
261. Dark M - 9¼" Collar Base Peacock and Grape Plate - Super
262. Tealish Green - 8¼", 6-Ruffle Concord Bowl - Unusual Base Color
263. Extra Nice B - 9¼", 3 in 1 Edge, Persian Medallion Bowl - Beguiling Color

264. AO - 7" Fenton Ruffle Vintage (Grape) Bowl - Top Rim Chipped, Still A Rare Size
265. RARE RED - Fenton Peacock At Urn Compote - Normal Dark Irid.
266. Beautiful P - Imp. Hobstar Flower Compote
267. ULTRA RARE B - N Harvest Poppy Compote - Only a Handful Known
268. A - N Blossomtime Compote - Multi Electric
269. A - N Grape and Cable Sweetmeat Whimsey Compote - Fantastic
270. P - N Hearts and Flowers Ruffled Compote - Multi Purples and Golds
271. Unusual B - N Hearts and Flowers Ruffled Compote - Tried to be Renniger
272. Fantastic Pastel AO - N Hearts and Flowers Ruffled Compote
273. Very Scarce G - Mlbg. Poppy Compote - Nice Radium Find
274. Dark M - N Hearts and Flowers Ruffled Compote
- 274A. Radium M - 9 1/2" Flat Fenton Holly Plate - Golds and Silvers
275. AO - 11" N Four Pillars Vase - Typical Foot Roughness - Not Bad
276. IB - N Ruffled Hearts and Flowers Bowl - Repaired Tip
277. B - 8 1/2", 6-Ruffle Fenton Orange Tree Bowl
278. M - 7", 6-Ruffle Lions Bowl - Up and Coming Pattern
279. Dark M - 7 1/4", 8-Ruffle Spat Ftd. Stag and Holly Bowl - Spur Nick
280. M - 9" Low 8-Ruffle, Collar Base Dragon and Lotus Bowl
281. B - 6", 6-Ruffle Fenton Sailboats Bowl
282. M - 2 1/2" Tall, Sq. Top Kittens Vase (?) - Whimsey Shape
283. M Flashed - Knights of Columbus Lettered 2 1/4" Communion Glass
284. M Flashed - 2" Miniature Shot Glass
285. M Flashed - 2 1/4" Miniature Tumbler
286. Clear - Green Enamel Painted Ext. - Iridized 4" Tall Miniature Basket
287. Clear - Marigold Enamel Painted Ext., Iridized 4" Tall Miniature Basket
288. M - 3 1/2" Tall, Sm. Split Diamond Pitcher
289. M - 6 1/2" Morning Glory Vase
290. Scarce G - Imp. Flute Toothpick - A Dandy
291. A - Imp. Flute Toothpick - Also Nice
292. P - Imp. Flute Toothpick - Fine Piece
293. M - Imp. Flute Toothpick - Great Example
294. Crystal/Pink - 4 1/2" Rd. Intaglio Marigold Golden Pansies Bowl - Australian
295. M - 4 1/4" Rd. European Berry Bowl with Intaglio Plums In Center
296. M Flashed - Whimsied 4" Cuspidor Shape Bowl - Mkd. Souvenir of Bennington, VT
297. M Flashed - 3 1/4" Tall Oregon Beaded Loop Vase - Very Rare
298. M Flashed - Shuttle Pattern 3 1/2" Tall Wine or Cordial
299. P - Dugan Amaryllis 5 1/2" Whimsey Plate - A Beauty
300. RARE, RICH M - 9" Sq. 8-Ruffle Peter Rabbit Bowl - Bearded Berry Ext.
301. Lav. - N 9" Three Fruits Plate - BW Ext.
302. Scarce Olive Green - 9 1/2" Four Flowers Vt. Plate - Great Find
303. IB - 8 1/4" PCE N Nippon Bowl - Very Pretty
304. B - N 8 1/2", 8-Ruffle Embroidered Mums Bowl - Beautiful Multi-Electric
305. Scarce B - 9" N Stippled Grape and Cable Vt. Plate - Rib Ext. - Electric
306. Scarce G - 8 1/2" N Stippled Grape and Cable Vt. Plate - Rib Ext. - Sweet!
307. Extra Nice G - N 9" Greek Key Plate - BW Ext.
308. Dark A - 8 1/2" N 9" Greek Key Plate - BW Ext. - Multi Electric
309. Exceptionally Rare Pastel M - 9" N Greek Key Plate with Rib Ext. - Loaded with Pinks
310. RARE N B - 9 1/4" Drapery Variant Vase - Two Small Base Chips
311. Outstanding P - 10 1/2", 6-Ruffle Dugan Farmyard Bowl - Professionally Repaired
312. CRYSTAL - Mlbg. Feather and Heart Pitcher - CRYSTAL IS HOT!
313. G - Mlbg. 7 1/2", 3 in 1 Edge Hanging Cherries Bowl - Scarce Shape and Size
- 313A. RARE VAS. - Mlbg. 9 1/4", 6-Ruffle Strawberry Wreath Bowl - Radium
314. Beautiful G - 8 1/2", 3 in 1 Edge Captive Rose Bowl - Very Scarce Shape
315. Super Multi Electric B - 8 1/4", 6-Ruffle Leaf Chain Bowl
316. Scarce A - 8 1/4" Ruffled Fenton Peacock at Urn Bowl - Harder to find than Plate
317. Scarce G - 8 1/4", 6-Ruffle Fenton's Wild Blackberry Bowl - Seldom Offered
318. Powder Blue - 8 1/2", 3 in 1 Edge Fenton Ribbon Tie Bowl - Irid. - Beautiful Pastel - Tough Color
319. A - 9 1/4" CRE Persian Medallion Lg. Bowl - Scarce Treatment and Color
320. Elec. B - 10" Sq. 8-Ruffle Fenton Little Flowers Bowl - Fabulous Irid.
321. ULTRA RARE N W - 9" Peacocks Plate - Rare BW Ext. - Only the Second One Offered at Auction - Photo Doesn't Capture Irid. - WOW!
322. B - N 9" Stippled Peacocks Plate - Rib Ext. - Always In Demand
323. Elec. B - N 9" Peacocks Plate - Rib Ext.
324. Dark A - N 9" Peacocks Plate - Rib Ext. - Great Purples, Golds, and Greens
325. P - N 9" Good Luck Plate - BW Ext. - Outstanding Multi Electric Piece
326. Dk. IB - Lg. ICS N Peacock at Urn Master Bowl - Loaded with Blues and Pinks
327. W - Lg. ICS N Peacock at Urn Master Bowl - Luscious Blues and Pinks
328. Stunning W - 11 1/2", Low ICS Persian Garden Bowl - Superb Iridescence
329. Rare Lime G - Blackberry Interior 8", 8-Ruffle N 3 Ftd. Bowl - Daisy & Plume Ext.
330. Dk. IG - N 8-Ruffle Nippon Bowl - Another Beautiful Rarity
331. Dk. IB - 8-Ruffle N Embroidered Mums Bowl - Pretty Pastel
332. G - 8 1/4" PCE N Three Fruits Bowl - BW Ext. - Well Above Average
333. P - Dugan Question Marks Stemmed Bon Bon - Nicest I've Seen
334. P - Dugan 11 1/2", 6-Ruffle Victorian Bowl - Awesome Electric Beauty
335. P - Tiffany Finish! - 11", 6-Ruffle Dugan Ski Star and Compass Bowl
336. P - Dugan 8 1/2", 10-Ruffle Ball Ftd. Cherries Bowl - Pattern Inside and Out
337. P - Dugan 9 1/4" Scarce 8-Ruffle Collar Base Cherries Bowl - Jeweled Heart Ext. - Few Known
338. P - Dugan 6 1/2" Scarce 8-Ruffle Collar Base Cherries Bowl - Jeweled Heart Ext. - Few Known
339. Fabulous Elec. P - Dugan 9" CRE Tri-Corner Dogwood Dome Base Bowl



340. **Fabulous Elec. P - Dugan 8 1/2" CRE Tri-Corner Flowers and Frames Bowl**
341. **RARE 9" Dugan Border Plants Handgrip Dome Base Plate - Electric Tiffany Stretch**
342. **P - Dugan Unusual Shape Deep 7 1/2", 10-Ruffle Electric Flowers and Frames Jardiniere Shaped Bowl**
343. Lavender - Dugan 9" Collar Base, 10-Ruffle, 3 in 1 Crimp Double Stem Rose Bowl
344. **Dark Celeste B - Stretch Dugan 10-Ruffle Double Stem Rose Bowl - Super Example**
345. A - 9" Sq. 8-Ruffle Collar Base Dugan Vintage (Grape) Bowl - Scarce Beauty
346. **Dk. G - 7 1/2" Deep 8-Ruffle Collar Base Dugan Vintage (Grape) Nut Bowl**
347. Cobalt B - Dugan 8 1/2", 10-Ruffle Windflower Bowl
348. **Scarce A - Dugan 8 1/2", 10-Ruffle Windflower Bowl**
349. Spectacular W - 9" Low, 10-Ruffle Apple Blossom Twigs Bowl
350. **Lavender Amethyst - 8 1/2" Low Ruffled Fanciful Bowl**
351. B - Dugan 9" Flat Apple Blossom Twigs Plate - BW Ext.
352. **B - 9 1/2" Fenton Persian Medallion Plate - Nice Find**
353. Pastel AO - N Ruffled Peacocks Bowl - Loaded with Opal and all the Extras!
354. **Electric W - N Ruffled Peacocks Bowl - Rib Ext. - Has to be the Best**
355. B - N Ruffled Peacocks Bowl - Rib Ext. - Multi Elec.
356. **P - N Ruffled Peacocks Bowl - Rib Ext. - Loaded with Electric Blues and Purples**
357. P - PCE N Peacocks Bowl - Rib Ext. - Long Time Favorite
358. **P - 6-Ruffle Dugan Fishnet Epergne LILY - Very Nice Find**
359. A - Dugan 8 1/2", 3 in 1 Crimp Collar Base Fanciful Bowl - Unusual Radium Finish
360. **RARE DK. B - Imp. Pansy Nappy - Electric Iridescence**
361. Emerald G - 7 1/2" Rd. Scroll Embossed Bowl - Plain Ext.
362. **Pastel Amber - 11 1/2", 6-Ruffle Ball Ftd. Imp. Open Rose Centerpiece Bowl**
363. Smoke - Imp. Balloons Blank Vase - Super Radium
364. **Clambroth 6" Imp. Deep Heavy Grape Bowl - Very Pretty**
365. P - 8 1/2" Rd. Scalloped Edge Imp. Diamond Lace Bowl - Stunning
366. **Clambroth - 9" Rd. Low Scalloped Imp. Diamond Lace Bowl - Gorgeous Pastel Irid.**
367. Beautiful Smoke - 9" Low Rd. Scalloped Imp. Blaze Bowl - Pretty Pastels
368. **Clambroth - 9" Low Rd. Scalloped Imp. Blaze Bowl - Pretty Pastels**
369. Clambroth - 9" Low Rd. Scalloped Imp. Fashion Bowl - Pretty Pastels
370. **Radium Pumpkin M - 7 1/2" Rd. Scalloped Imp. Shell and Sand Bowl**
371. Amber - 8", 8-Ruffle Imp. Open Rose Bowl
372. **Amber - 9" Low 8-Ruffle Imp. Pansy Bowl - Electric Blue and Purple Center**
373. **RARE** Awesome Amber - 10 1/2" Imp. Sgnd. Nuart Chrysanthemum Chop Plate
374. **P - 7 1/2" Radium Electric Imp. 8-Ruffle Scroll Embossed Bowl - Plain Int.**
375. P - 7 1/2", 8-Ruffle Imp. Scroll Embossed Bowl - File Ext. - Radium Electric
376. **P - 8 1/2" Fantastic 8-Ruffle Imp. Star of David Bowl - Breathtaking!**
377. Lav. - 9 1/2" Low 8-Ruffle Cobblestone Bowl - Radium Rainbow!

378. **Smoke - 9 1/2" Low Ruffle Imp. Pansy Plate - Radium Pastel Finish**
379. P - 8 1/2", 8-Ruffle Imp. Grape Bowl - Electric Blue and Purple Mirrored Finish
380. **Red Amberina Stretch - Imp. Double Scroll Console Bowl**
381. Radium M - 11 1/2" Mid-Size JIP Imp. Morning Glory Vase - 3 1/2" Base, 7" Top
382. **Radium M - Squatty 6 1/2" JIP Imp. Morning Glory Vase - 2 1/2" Base, 6" Top**
383. M - African Shield 2 1/2" Tall Vase with Wire Insert - Great Example
384. **Radium M - 9 1/2" Tall European Vase - Unique Shape, Design - Unknown Pattern**
385. G - 11" N Tree Trunk Vase - 3 1/2" Base, 4 1/2" Top - Very Nice
386. **G - 10" N Thin Rib Vt. Vase - Starred Base - Scarce Shape**
387. M - N 7 1/2" Four Pillars Vase - Near Pumpkin - Great Feet
388. **M - 8 1/2" N Drapery Vt. Vase - Radium Pumpkin Finish**
389. W - N Corn Vase - Floral Base
390. **P - N 10" Radium Electric Leaf Column Vase - 4" Top**
391. M - 10 1/2" Dugan Big Basketweave Vase - Extra Nice
392. **G - N 10 1/2" Diamond Point Vase - 4 1/2" Opening**
393. G - Fenton 9 1/2" Plume Panels Vase - 7 1/2" Front Height
394. **Purple - 6" N Tornado Vase - Tri Corner**

THANK YOU FOR ATTENDING TODAY

SPECIAL NOTE:

CALENDAR OF AUCTION EVENTS

Saturday, November 10, 2001

Carnival Glass at Boonville Center

THE ALLEN COLLECTION

**Booking NOW for
11th Annual New Year's
Extravaganza
Saturday, January 5, 2002**

**For Free Color Catalogs & Information Write:
Mickey Reichel**

516 Third Street, Boonville, MO 65233-1536

or Call: 660-882-5292 days or

660-882-5283 evenings

E-mail: mreichel@undata.com

Website: www.yourauction page.com/reichel

Call today for 2002 bookings.

(1 piece or entire collection!!)

MICKEY REICHEL
ANTIQUE & AUCTION, L.C.
516 THIRD STREET
BOONVILLE, MO 65233-1536

PRESORTED
FIRST CLASS MAIL
US POSTAGE PAID
SEDALIA, MO
PERMIT 217

RETURN SERVICE REQUESTED

FIRST CLASS MAIL
SPECIAL INVITATION TO:

8*41*****ALL FOR ADC 460

LEE MARKLEY

PO BOX 306

MENTONE, IN 46539-0306



Back Row: 108, 109, 112, 111, 113
Middle Row: 114, 110, 117, 116
Front Row: 118, 119, 1120, 121, 122



Back Row: 282, 283, 284, 285, 286, 287
Middle Row: 288, 290, 291, 292, 293
Front Row: 296, 297, 298, 299