

Carnival Glass

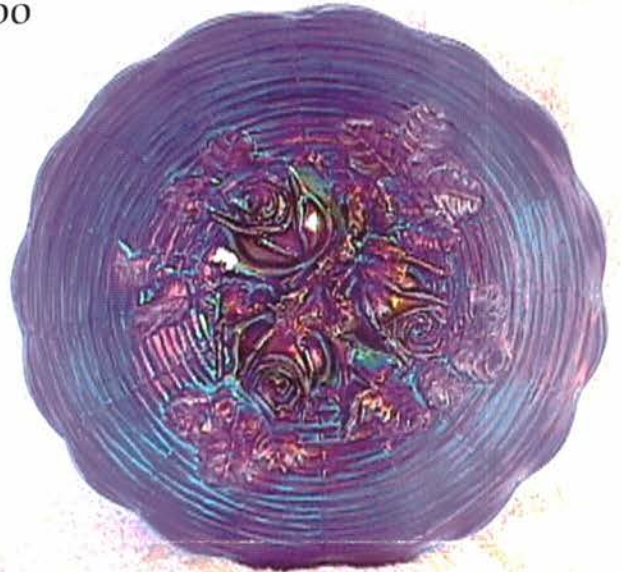
AUCTION

Saturday, October 13th 2001 - 9:30 A.M.

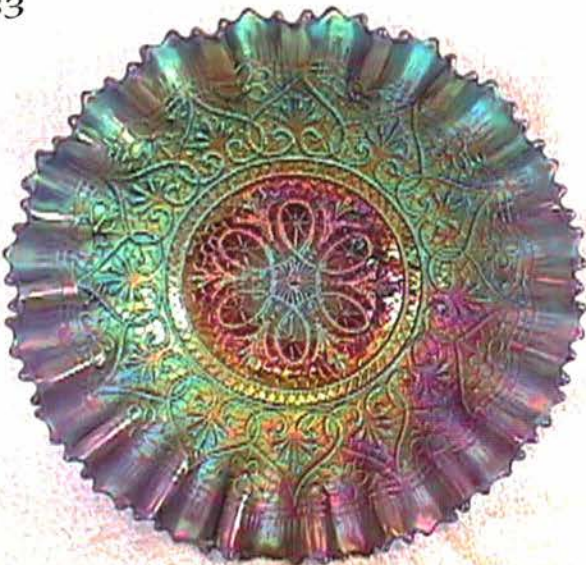
50



100



433



200



Seeck Antique Auction Center

15564 300th St. (Hwy B20 and Hwy 65 North)

Mason City, Iowa

Jim and Jan Seeck

641-424-1116

CARNIVAL GLASS AUCTION
Seeck Antique Auction Center - Mason City, Iowa
Saturday, October 13, 2001 -- 9:30 A.M.
(Preview: Fri. Oct. 12th - 3:00 pm to 6:00 pm)

We are pleased to offer two great collections of Carnival Glass at our Auction Center this Fall. We are selling the Roy Mills collection from Northern California along with a collection from Southern California. Together they offer a nice variety of glass for all.

At the end of the auction we will be giving away a door prize of \$50. You may want to stick around if you tend to be lucky!

Make sure you check out our website for more pictures! Also, on our website is a really nice Mason City Tourism link to more hotels, restaurants, etc.

HOTELS - Mason City: Comfort Inn - (641)423-4444; Super 8 - (641)423-8855(NEW); Holiday Inn - (641)423-1640;
Clear Lake: Americinn - (641)357-8954; Best Western Holiday Lodge (641)357-5253.

TERMS: Cash or Check with proper I.D.

NO BUYER'S PREMIUM

ABSENTEE BID POLICY

1. Write-in bids will be accepted by sending the numbers of the item(s) desired and the amount bid on each to: **Seeck Auctions, PO Box 377, Mason City, Iowa 50402.**
2. If known by Auction Company, bids may be done over the telephone. (641)424-1116.
3. You may **email** your bids to us: **jimjan@seeckauction.com** Continue to include the numbers of the item(s) you would like to bid on and amount bid on each, please include your telephone number.
4. There is a \$5 handling charge for each successful bid. Shipping and insurance charges are additional.
5. Bidders will be notified by phone if their bid(s) are successful. This call will be made 1 - 3 days after the auction.
6. Please have all bids in by **Thurs., Oct. 11th**. All bids (by mail, phone or **email**) after this date may not be carried out.
7. Please place bids in the following increments: \$1 to \$300 - \$5 increments \$300 up - \$25 increments.
8. **If you do not receive an item that sold for less than your bid, assume we cancelled your bid because the piece of glass had below average color, manufacture problem, damage or was not listed correctly.**
9. We are discontinuing the availability of our auction price lists. Since so many people are online or have access to a computer, the need for this has slowly gone away. Auction results are posted on our website within 5 days of the auction (depending on drive time home from the sale.) Also results are available in many of the club newsletters.

WEBSITE: <http://www.seeckauction.com>

- | | |
|--|---|
| <p>___ 1. Imperial Grape ruffled bowls (2) - marigold - choice</p> <p>___ 2. Cosmos 10" ruffled bowls (3) - marigold - sold choice</p> <p>___ 3. Two Flowers Spatula ftd rosebowl - marigold</p> <p>___ 4. Double Stemmed Rose domed ftd ruffled bowl - marigold</p> <p>___ 5. Morning Glory JIP 10" vase - marigold</p> <p>___ 6. Fenton's Grape & Cable spt ftd ruffled bowl - marigold</p> <p>___ 7. Vintage 6" deep round sauce - marigold</p> <p>___ 8. Robin mug - marigold - unstippled</p> <p>___ 9. Stippled Rays 6" plates(3) - marigold</p> <p><u>2100</u> 10. Tornado vase - lavender - super pretty, has a wide tri-cornered top, rare & neat</p> <p>___ 11. N's Grape Leaves ruffled bowl - purple</p> <p>___ 12. N's Grape Leaves ruffled bowl - marigold - pretty, has some pinpoint on edge</p> <p>___ 13. Apple Blossom Twigs ruffled bowl w/smooth edge - purple - nice</p> <p>___ 14. Waterlily ftd master berry bowl - marigold</p> | <p><u>1200</u> 15. Dragon & Lotus ruffled bowl - red - super pretty red irid. on a very scarce bowl</p> <p>___ 16. Dragon & Lotus ruffled bowl - peach opal - very pretty, scarce</p> <p>___ 17. Dragon & Lotus ruffled bowl - green - nice, has chip on edge</p> <p>___ 18. Dragon & Lotus ruffled bowls (2) - blue - choice</p> <p>___ 19. Fishscale & Beads 7" ruffled bowl - marigold - pretty yellow irid.</p> <p><u>400</u> 20. Flowers & Spades large ruffled bowl - peach opal - scarce pattern, nice</p> <p>___ 21. Windmill 8" ruffled bowls (2) - purple - both nice</p> <p>___ 22. Windmill 8" ruffled bowl - marigold - pastel w/pretty yellow irid.</p> <p>___ 23. Six Petals crimped edge ruffled bowl - peach opal</p> <p>___ 24. Big Basketweave 10" vase - marigold</p> <p><u>1000</u> 25. M'burg Peacocks master IC shaped bowl - green - radium & super, very scarce</p> <p>___ 26. Swan Salt - ice green</p> |
|--|---|

- ___ 27. Greek Key ruffled bowl - purple - scarce
- ___ 28. Soda Gold 5 pc. water set - marigold - some would call this clambroth, pretty
- ___ 29. Smooth Rays compote - green
- ___ **30. Drapery 8 1/2" vase - green - super pretty, very rare in this color, typical minor ruffness on toes**
- ___ 31. Drapery 8 1/2" vase - ice green - typical minor ruffness on toes
- ___ 32. Good Luck ruffled bowl w/ribbed back - blue - electric, has one point made of epoxy
- ___ 33. Pansy dresser tray - amber - scarce
- ___ 34. Pansy dresser tray - marigold
- ___ **35. Persian Medallion chop plate - blue - scarce, a bit silvery**
- ___ 36. Windmill ruffled sauce - marigold
- ___ 37. Vintage 10" 3 in 1 edge bowl - blue - nice
- ___ 38. Question Mark bon bon - purple - super
- ___ 39. Birds & Grapes wall pocket - marigold
- ___ **40. Victorian ruffled bowl - purple - very scarce & nice, kind of squared**
- ___ 41. Grape & Gothic Arches creamer - blue
- ___ 42. Windflower ruffled bowl - blue - nice
- ___ 43. Windflower ruffled bowl - marigold
- ___ 44. Left Hand 8" vase - marigold
- ___ 45. Orange Tree loving cup - green - minor pinpoint on base, nice
- ___ **46. Orange Tree loving cups (2) - blue - choice**
- ___ 47. Orange Tree loving cup - marigold - large chip on top edge
- ___ 48. Chrysanthemum large ftd ruffled bowl - blue - pretty
- ___ 49. Chrysanthemum large ftd IC shaped bowl - marigold
- 170's ___ **50. Dragons Tongue large ftd ruffled bowl - marigold - extremely rare & super, a wonderful piece**
- ___ 51. Imperial Grape 7 pc. berry set - marigold
- ___ 52. Texas shot glass - blue - very scarce, nice
- ___ 53. Fenton's Peacock at Urn ruffled bowl - blue - very pretty
- ___ 54. Persian Medallion 7" ruffled bowl - green
- ___ **55. Holly 9" plate - black amethyst - very scarce plate, nice**
- ___ 56. Holly 9" plate - blue - manufacture split on base, nice
- ___ 57. Holly 9" plate - marigold - nick on edge
- ___ 58. Rustic 10" vase - green
- ___ 59. Rustic 10" vase - blue
- ___ 60. Rustic 10" vase - amethyst
- ___ **61. Imperial Grape ruffled bowl - purple - electric & super**
- ___ 62. Imperial Grape ruffled bowl - marigold
- ___ 63. Grape Delight rosebowl - white - foot chip
- ___ 64. Grape Delight rosebowl - blue
- ___ **65. Thistle banana boat - green - nice**
- ___ **66. Thistle banana boat - amethyst - nice**
- ___ 67. Thistle banana boat - marigold - also nice
- ___ 68. Pansy ruffled bowl - purple - nice
- ___ 69. 3 Misc. Foreign pcs.- marigold - choice
- ___ 70. Fenton's Grape & Cable fruit bowl w/Persian Medallion interior - blue - has several chips
- ___ 71. Fenton's Grape & Cable fruit bowl w/Persian Medallion interior - marigold
- ___ 72. Luster Rose water pitcher - green - scarce
- ___ 73. Scroll Embossed 8" ruffled bowl w/file back - purple - pretty
- ___ 74. Split Diamond creamer & sugar - marigold
- ___ **75. Acorn Burrs 5 pc. berry set - purple - nice**
- ___ 76. Acorn Burrs indiv. berry bowls (6) - marigold - choice
- ___ 77. Heavy Grape 8" plate - purple - pretty - minor burst in base
- ___ 78. Heavy Grape 8" plate - marigold
- ___ 79. April Showers 12" vase - blue
- ___ **80. Horse Medallion 7" plate - marigold - scarce & nice**
- ___ 81. Holly IC shaped bowls (2) - blue - both nice, choice
- ___ 82. Scroll Embossed ruffled sauce w/file back - purple - super
- ___ 83. Scroll Embossed ruffled sauce w/file back - marigold
- ___ 84. Cathedral chalice - marigold
- ___ **85. Ski Star large ruffled bowl - purple - super & scarce**
- ___ 86. Ski Star large ruffled bowls(2) - peach opal - choice
- ___ 87. Dragon & Lotus spt ftd IC shaped bowl - green
- ___ 88. Dragon & Lotus spt ftd IC shaped bowl - amethyst
- ___ 89. Dragon & Lotus spt ftd IC shaped bowl - marigold
- ___ **90. Scroll Embossed 9" plate - purple**
- ___ 91. Scroll Embossed 9" plate - marigold - pretty
- ___ 92. Open Rose 9" plate - marigold - nice
- ___ 93. Wild Rose Open Edge ftd nut bowl - purple
- ___ 94. Wild Rose Open Edge ftd nut bowl - green
- ___ 95. Orange Tree 4 pc. table set - marigold - butterdish is perfect, other pcs. have minor foot damage, sold a set
- ___ 96. Daisy & Plume ftd rosebowl - marigold
- ___ **97. Imperial Grape 6" plate - lime green - very scarce color for this plate**
- ___ **98. Imperial Grape 6" plate - purple - pretty**
- ___ 99. Imperial Grape 6" plate - marigold
- 110's ___ **100. Rose Show 9" plate - blue - very pretty example & quite rare**
- ___ 101. Diamond & Rib 7" squatty vase - amethyst
- ___ 102. M'burg Rays & Ribbons 3 in 1 edge bowl - amethyst - satin
- ___ 103. M'burg Rays & Ribbons 3 in 1 edge bowl - marigold - satin
- ___ 104. Feathers 7 1/2" squatty vase - purple
- ___ **105. Singing Birds 7 pc. water set - marigold - very scarce & desirable**

- ___ 106. Mary Ann vase - marigold
- ___ 107. Stag & Holly spt ftd ruffled bowl - green
- ___ 108. Stag & Holly spt ftd ruffled bowl - amethyst
- ___ 109. Robin water pitcher - marigold
- ___ **110. Panther master berry bowl - blue - very pretty & quite scarce**
- ___ 111. Panther ftd ruffled sauce - blue
- ___ 112. Panther ftd ruffled sauces (2) - marigold - choice
- ___ 113. Imperial Grape 11 pc. wine set - marigold
- ___ 114. Peacock Tail 7" deep round bowl - green
- ___ **115. Hearts & Flowers ruffled bowls (2) - purple - one has gold irid., the other multi-colored, scarce, choice**
- ___ **116. Hearts & Flowers ruffled bowl - ice blue**
- ___ **117. Persian Medallion bon bon - aqua - very scarce color**
- ___ 118. Persian Medallion bon bon - lime green
- ___ 119. Persian Medallion bon bon - amethyst
- ___ 120. Persian Medallion bon bon - blue
- ___ 121. Persian Medallion bon bon - marigold
- ___ 122. Heart & Vine IC shaped bowl - marigold
- ___ 123. Butterfly & Berry butterdish - marigold
- ___ 124. Garland rosebowl - blue
- ___ 125. Garland rosebowl - marigold
- ___ 126. Strawberry 9" plate w/BW back - green
- ___ 127. Strawberry 9" plate w/BW back - amethyst
- ___ 128. Pony ruffled bowl - amethyst - scarce
- ___ 129. Pony ruffled bowl - marigold
- ___ **130. Good Luck ruffled bowl w/ribbed back - blue - has electric highlights, pretty**
- ___ 131. Good Luck ruffled bowls (2) - purple - choice, both have damage
- ___ 132. Good Luck ruffled bowl w/ribbed back - marigold - nice
- ___ 133. Ribbon Tie 3 in 1 edge low bowl - blue
- ___ 134. Ribbon Tie 3 in 1 edge bowl - green
- ___ **135. Peacock at the Fountain fruit bowl - purple - very pretty example, a dandy**
- ___ 136. Octagon creamer - marigold
- ___ 137. Leaf Columns 9" vase - green
- 310 ___ **138. Grape & Cable cologne bottle - amethyst - nice**
- ___ 139. Orange Tree standard size mugs (2) - blue - choice
- ___ **140. Fantail ftd IC shaped bowl - blue - electric & super pretty**
- ___ 141. Rustic 15" mid-size vase - amethyst
- ___ 142. Rustic 16" mid-size vase - green
- ___ 143. Rustic 16" mid-size vase - blue
- ___ 144. Vintage 10" IC shaped bowl - green
- 500 ___ **145. Sunflower spt ftd ruffled bowl - blue - scarce color for these & nice**
- ___ 146. Sunflower spt ftd ruffled bowl - amethyst
- ___ 147. Star of David & Bows dome ftd ruffled bowl - amethyst - nice
- ___ 148. Orange Tree breakfast set - blue
- ___ 149. Persian Medallion crimped edge ruffled compote - marigold
- 550 ___ **150. Stippled Three Fruits spt ftd ruffled bowl - aqua opal - very scarce & highly desirable**
- ___ 151. Three Fruits spt ftd ruffled bowl - purple - pretty
- ___ 152. Persian Medallion 3 in 1 edge bowl - amethyst - pretty
- ___ 153. Persian Medallion 3 in 1 edge bowl - marigold - dark & pretty
- ___ 154. Ribs & Panels crimped edge 5 1/2" vase - marigold
- 350 ___ **155. N's Eight Sided bushel basket - ice blue - very scarce & nice**
- ___ 156. N's Eight Sided bushel basket - white - nice
- ___ 157. Carolina Dogwood dome ftd ruffled bowl - lavender slag - unusual looking piece
- ___ 158. Bullseye & Beads 9 1/2" vase - marigold
- ___ 159. Plume Panels 11" vase - marigold
- ___ **160. Drapery candy dish - lime green - typical feet**
- ___ 161. Drapery candy dish - ice blue - typical feet
- ___ 162. Drapery candy dish - white - typical feet
- ___ 163. Drapery candy dish - marigold - typical feet
- ___ 164. Floral & Grape water pitcher - amethyst - crack by handle
- ___ 165. Floral & Grape water pitcher - marigold
- ___ 166. Peacock & Grape ruffled bowl - green - nick on pt.
- ___ 167. Peacock & Grape ruffled bowl - marigold
- ___ 168. Sailboats ruffled sauce - aqua - pretty
- ___ 169. Sailboats ruffled sauce - green - scarce color
- ___ **170. Round Up low ruffled bowl - peach opal - nice**
- ___ 171. Round Up 3 in 1 edge bowl - white
- ___ 172. Grape & Cable Variant ruffled bowl w/BW back - amethyst
- ___ 173. Diamond Rib 11 1/2" vases (2) - amethyst - choice
- ___ 174. Grape Arbor fruit bowl - marigold - nice
- ___ **175. Cobblestone ruffled bowl purple - pretty, small nick on back edge**
- ___ 176. Fine Cut & Roses candy dish - green - typical feet
- ___ 177. Poinsettia milk pitcher - marigold
- ___ 178. Ripple 10" vase - marigold - has 3 7/8" base
- ___ 179. Vintage fernery - blue
- ___ **180. Hattie rosebowl - marigold - very pretty & extremely rare, a dandy**
- ___ 181. Wreath of Roses bon bon - amethyst
- ___ 182. Leaf Rays hldd nappy - white
- ___ 183. Leaf Rays hldd nappy - amethyst
- ___ 184. Ranger colonge bottle - marigold
- ___ 185. Orange Tree ftd water pitcher - blue - has badly damaged foot

- ___ 186. Orange Tree water pitcher - marigold - has badly damaged feet
- ___ 187. Strawberry bon bon - blue
- ___ **188. Ten Mums ruffled bowl - green - pretty, scarce**
- ___ **189. Ten Mums ruffled bowl - amethyst - super, scarce**
- ___ 190. Leaf Chain 7" ruffled bowl - marigold
- ___ 191. Grape & Cable 9" plate w/BW back - green
- ___ 192. Grape & Cable 9" plate w/plain back - purple
- ___ 193. Enameled Cherries & Little Flowers water pitcher - blue
- ___ 194. Enameled Cherries & Little Flowers water pitcher - marigold - nice
- ___ **195. Butterfly & Berry master berry bowl - blue - very pretty**
- ___ 196. Fishscale & Beads banana boat shaped dish - peach opal
- ___ 197. Peacock & Grape IC shaped bowl - marigold
- ___ 198. Tiger Lily water pitcher - marigold
- ___ 199. Ribbon Tie 3 in 1 edge low bowl - blue
- 260 ___ **200. M'burg Bernheimer Brothers ruffled bowl - blue - fantastic & rare, a top piece in this auction**
- ___ 201. Australian Gum Tips 10" vase - dark
- ___ 202. Australian Gum Tips 8 1/2" vase - dark
- ___ 203. Australian Kangaroo master ruffled bowl - marigold
- ___ **204. Australian Swan master ruffled bowl - purple - nice**
- ___ 205. Australian Swan ruffled sauce - dark
- ___ **206. Australian Thunderbird master ruffled bowl - dark**
- ___ 207. Australian Kangaroo ruffled sauce - dark
- ___ 208. Orange Tree shaving mug - aqua - very scarce
- ___ 209. Windmill milk pitcher - marigold
- 365 ___ **210. Raindrops domed ftd ruffled bowl - purple - super pretty, scarce**
- ___ 211. Beaded Cable rosebowl - blue - nice
- ___ 212. Beaded Cable rosebowl - amethyst
- ___ 213. Beaded Cable rosebowl - marigold
- ___ 214. Vintage CRE bowl - green
- ___ **215. Drapery Variant 9 1/2" vase - sapphire - extremely rare color & nice, one tiny nick on a toe**
- ___ 216. Lions ruffled bowl - marigold
- ___ 217. Good Luck 9" plate w/ribbed back - green - scarce plate, has chip on point
- ___ 218. Birds & Cherries card tray shaped bon bon - green
- ___ 219. Birds & Cherries card tray shaped bon bon - blue
- 375 ___ **220. Wreath of Roses 6 pc. punch set - amethyst - very scarce set, base has been cracked, but has a super top**
- ___ 221. Weeping Cherries domed ftd 3 in 1 edge bowl - marigold
- ___ 222. Fenton's Peacock at Urn goblet shaped compote - blue
- ___ 223. Dugan Cherries 10" ruffled bowl - purple - pretty
- ___ 224. Butterflies bon bon - green
- ___ **225. Captive Rose 9" plate - blue - super pretty example**
- ___ 226. April Showers 10" vases (2) - blue - chioce
- ___ **227. Fenton's Peacock at Urn IC shaped bowl - pastel aqua - has a pretty marigold overlay, unusual**
- ___ 228. Pansy ruffled pickle dish - marigold
- ___ 229. Brocaded Palms compote - pink
- ___ **230. Persian Garden large IC shaped bowl - peach opal - very scarce & nice**
- ___ 231. Leaf Tiers spooner - marigold
- ___ 232. Scroll Embossed 8" ruffled bowl - purple - pretty
- ___ 233. Fenton's Three Fruits 9" plate - amethyst - nice
- ___ 234. Stag & Holly large ftd ruffled bowl - marigold
- ___ **235. Persian Medallion 9" plate - blue - scarce, silvery**
- ___ 236. Vintage ruffled bowl - amethyst
- ___ 237. Thin Rib & Drape 5" vase - marigold
- ___ **238. N's Bushel Basket - green - scarce color, nice**
- ___ 239. N's Bushel Basket - marigold - nice
- ___ 240. N's Bushel Baskets (2) - purple - choice
- ___ 241. Ribbon Tie CRE bowl - amethyst
- ___ **242. Carolina Dogwood IC shaped bowl - blue moonstone - very scarce color**
- ___ 243. M'burg Hanging Cherries Large IC shaped bowl - amethyst - nice
- ___ 244. Holly & Berry ruffled bowl - purple
- ___ 245. Holly & Berry ruffled bowl - peach opal
- ___ 246. Hearts & Flowers ruffled compote - aqua opal - chip on base, nice
- ___ 247. Hearts & Flowers ruffled compote - blue - chip on base, scarce
- ___ **248. Hearts & Flowers ruffled compote - marigold - nice**
- ___ 249. N's Thin Rib 10" vase - purple
- 230 ___ **250. Grape & Cable small size fruit bowl - ice green - super rare & nice, almost lime green**
- ___ 251. Peacock Tail tri-cornered dish - marigold
- ___ 252. Flowers & Frames domed ftd ruffled bowl - purple - scarce
- ___ 253. Little Flowers 10" ruffled bowl - marigold
- ___ 254. Louisa rosebowl - amethyst
- ___ 255. Louisa rosebowl - aqua teal
- ___ 256. Three Fruits dome ftd ruffled bowl - purple - pretty
- ___ 257. Fruits & Flowers bon bon - purple - pretty
- ___ 258. Fruits & Flowers bon bon - marigold - nice
- ___ 259. Ripple 8" vase w/2 7/8" base - purple - pretty
- 450 ___ **260. Peacock at the Fountain water pitcher - marigold - very nice, scarce**
- ___ 261. Beaded Bulleye 12" vase - marigold
- ___ 262. Stag & Holly large ftd IC shaped bowl - marigold - nice
- ___ 263. Puzzle round bon bon - purple - super pretty
- ___ 264. Peacock & Grape spt ftd IC shaped bowl - marigold
- ___ 265. Singing Birds mug - blue - super
- ___ 266. Singing Birds mug - purple

- ___ 267. Singing Birds mug - marigold
- ___ 268. Lotus & Grape 3 in 1 edge bowl - blue
- ___ 269. Louisa rosebowl - amethyst
- 900 **270. Diamond Points basket - marigold - extremely rare item, not many around, & nice**
- ___ 271. Open Rose 8" ruffled bowl - purple - nice
- ___ 272. M'burg Whirling Leaves 3 in 1 edge bowl - amethyst - super pretty radium irid.
- ___ 273. Pinecone 6" plate - marigold - nice
- ___ 274. Orange Tree w/Trunk ruffled bowl - white - nice
- ___ 275. Feather Stitch ruffled bowl - blue - scarce
- ___ 276. Heavy Grape 8" vase - marigold - nice
- ___ 277. Acorn Burrs butterdish - green - top finial broke off & glue back on
- ___ 278. Pinecone ruffled sauce - blue
- ___ 279. Dugan Cherries ruffled 10" bowl - purple
- ___ 280. Golden Grape rosebowl - marigold
- ___ 281. Vintage 3 in 1 edge bowl - amethyst
- ___ **282. Peacocks PCE bowl - marigold - nice**
- ___ 283. Peacock & Grape 3 in 1 edge bowl - marigold - nice
- ___ 284. Dugan Cherries ftd ruffled bowl - purple - nice
- ___ 285. Flute toothpick - green
- ___ 286. Flute toothpick - purple - chipped
- ___ 287. Flute toothpick - marigold
- ___ 288. Scroll Embossed 8" round bowl - purple - pretty
- ___ 289. Imperial Grape 9" plate - marigold
- 550 **290. N's Peacock at Urn chop plate - purple - very rare & pretty for these**
- ___ 291. Brocaded Palms handled 5" bowl - pink
- ___ 292. Scales ruffled bowl - peach opal - scarce
- ___ **293. Grape & Cable water pitcher - purple - nice**
- ___ 294. Footed Prisms Panels vase - marigold
- ___ 295. Horse Medallion JIP ftd bowl - blue - nice
- ___ **296. Unusual Wine bottle w/stopper & four tumblers - marigold - Argentinian?**
- ___ **297. Morning Glory 13" funeral vase - purple - super pretty, highly desirable**
- ___ 298. Double Stemmed Rose dome ftd IC shaped bowl - peach opal
- ___ 299. Blackberry Open edge ruffled hat - green
- ___ 300. Blackberry Open Edge ruffled hat - amethyst
- ___ 301. Blackberry Open Edge ruffled hat - blue
- ___ 302. Blackberry Open Edge ruffled hat - marigold
- ___ **303. Nippon PCE bowl w/ribbed back - ice blue - nice**
- ___ 304. Holly ruffled bowls (2) - marigold - choice
- ___ 305. Grape & Cable Variant PCE bowl w/plain back - purple - nice
- ___ 306. Three Fruits 9" plate w/BW back - purple
- ___ 307. Three Fruits 9" plate w/BW back - marigold
- ___ 308. Inverted Strawberry spittoon - marigold - cracked
- ___ 309. Fenton's Thin Rib 17" vase - blue
- ___ 310. Kittens cup & saucer - marigold
- ___ 311. Kittens four sides up dish - marigold
- ___ 312. Kittens two sides up dish - marigold
- 900 **313. Daisy & Drape turned in vase - amethyst - super pretty & rare, many would call this lavender**
- ___ 314. Cosmos 10" ruffled bowl - marigold
- ___ **315. Stippled Three Fruits 9" plate w/ribbed back - purple - scarce, nice**
- ___ 316. Long Thumbprint 9" vases (2) - green - choice
- ___ 317. Star of David ruffled bowl - purple - super pretty
- ___ 318. Caroline CRE handgrip bowl - peach opal
- ___ 319. Butterfly & Berry master berry bowl - blue - chip on toe
- ___ 320. Blackberry Open edge bowl - lime green - has marigold overlay
- ___ **321. Ten Mums 3 in 1 edge bowl - blue - pretty**
- ___ 322. N's Butterfly bon bon - purple
- ___ 323. Ripple 10" vase w/2 7/8" base - marigold
- ___ **324. Orange Tree ftd fruit bowl - blue - nice**
- ___ 325. Brocaded Palms handled 10" plate - ice green
- ___ **326. Orange Tree 9" plate - blue - very pretty, highly desirable**
- ___ 327. Stippled Rays 6" IC shaped bowl - blue
- ___ 328. Flute creamer & sugar - purple - super
- ___ 329. Grape & Cable hatpin holder - purple - highly desirable
- ___ 330. Sailboats round sauce - marigold
- ___ 331. Double Star water pitcher - green - very scarce, has chip on base
- ___ 332. Blackberry Spray ruffled hat - blue
- ___ **333. Eat Paradise Sodes adv 6" plate - amethyst - super nice, scarce**
- ___ 334. Star Medallion milk pitcher - smoke
- ___ 335. Imperial Grape cup & saucer - green - scarce
- ___ **336. Leaf Chain 9" plate - marigold - scarce & desirable**
- ___ 337. Orange Tree powder jar - blue
- ___ 338. Holly CRE JIP hat - blue
- ___ **339. Imperial Grape 11" ruffled bowl - purple - pretty**
- ___ 340. Dugan Vintage domed ftd ruffled bowl - blue - nice
- ___ **341. M'burg Hobnail Swirl rosebowl - amethyst - scarce, nice**
- ___ 342. Scroll Embossed 8" ruffled bowl w/file back - purple - nice
- ___ 343. Fanciful IC shaped bowl - white - nice
- ___ 344. Acorn deep round bowl - powder blue - unusual color
- ___ 345. Diamond Rib 7" squatty vase - green
- ___ 346. Three Fruits spt ftd ruffled bowl - purple - nice
- ___ 347. Heavy Grape 6" round bowl - marigold
- ___ 348. Holly ruffled hat - red - cherry red color, nice
- ___ 349. Maple Leaf spooner - purple
- 450 **350. Stippled Strawberry PCE bowl w/ribbed back - purple - super rare, a nice piece**
- ___ 351. Beaded Shell spooner - marigold

- ___ 352. Stag & Holly large ftd deep ruffled bowl - marigold
- ___ 353. Diamond Lace tumbler - purple
- ___ 354. Good Luck PCE bowl w/ribbed back - purple - super, has spot of epoxy on edge
- ___ 355. Imperial Grape water pitcher - marigold
- ___ 356. Imperial Grape tumbler - marigold
- ___ 357. Scales IC shaped bowl - blue opal - minor heat check in base, nice
- ___ 358. Heart & Vine 3 in 1 edge bowl - amethyst - nice
- ___ 359. Leaf Rays ruffled nappy - purple
- ___ 360. Panther ftd master berry bowl - marigold - super
- ___ 361. Heavy Grape 6" ruffled bowl - marigold
- ___ 362. Nautilus whimsey creamer - peach opal - nice
- ___ 363. Corinth 9" vase - amethyst
- ___ 364. Fenton's Peacock at Urn ruffled bowl - blue - scarce
- ___ 365. Butterfly & Berry tumblers (4) - marigold - choice
- ___ 366. Big Basketweave unswung 5" vase - purple - neat
- ___ 367. Miniature Morning Glory 7" vase - purple - nice
- ___ 368. Vintage 7" plate - blue - nice
- ___ 369. Lions IC shaped bowl - marigold
- ___ 370. Blueberry tumblers (2) - blue - nice, choice
- ___ 371. Little Barrel - marigold - nice
- ___ 372. Imperial Grape water carafe - green
- ___ 373. Stag & Holly spt ftd IC shaped bowl - blue
- ___ 374. Imperial Grape master berry bowl - marigold
- ___ 375. Lions ruffled bowl - marigold
- ___ 376. Heavy Iris tumblers (4) - amethyst - choice
- ___ 377. Orange Tree loving cup - blue - roughness on the bottom of one handle
- ___ 378. Shell ftd soap dish - amethyst
- ___ 379. Shell ftd soap dish - aqua
- ___ 380. Little Flowers 10" 3 in 1 edge bowl - amethyst - nice
- ___ 381. Rustic 7" squatty vase - blue
- ___ **382. Stippled Three Fruits ruffled bowl w/ribbed back - purple - nice, scarce**
- ___ 383. Blackberry Spray ruffled hat - marigold
- ___ 384. Heart & Vine ruffled bowl - amethyst - pretty
- ___ 385. Holly 3 in 1 edge bowl - blue
- ___ 386. Holly ruffled compote - blue
- ___ **387. Peacocks 9" plate w/ribbed back - marigold - scarce & desirable**
- ___ 388. Pansy sugar bowl - purple
- ___ 389. Stag & Holly large ftd ruffled bowl - marigold
- ___ 390. Grape & Cable berry sauces (6) - purple - choice
- ___ 391. M'burg Holly Sprig 6" round bowl - green - radium, nice
- ___ 392. Fisherman's mug - purple
- ___ 393. Stippled Rays 10" ruffled bowl - purple
- ___ 394. Grape & Gothic Arches tumbler - blue
- ___ 395. Buzz Saw small size cruet, no stopper - green - scarce
- ___ 396. Pony ruffled bowl - marigold
- ___ 397. Ribbon Tie ruffled bowl - green
- ___ 398. Sailboats IC shaped sauce - marigold
- ___ 399. Cherry Chain 10" ruffled bowl - blue
- ___ 400. Apple Blossom Twigs ruffled bowl - lavender slag - unusual
- ___ 401. Wishbone ftd ruffled bowl - amethyst
- ___ 402. Wreath of Roses ruffled compote - marigold
- ___ **403. Leaf & Beads rosebowl - blue - nice**
- ___ 404. Vintage ruffled sauce - marigold
- 150 **405. Rose Show ruffled bowl - aqua opal - super scarce & nice**
- ___ 406. Basketweave Open edge ruffled hat - marigold
- ___ 407. Fanciful ruffled bowl - marigold - nice
- ___ 408. Palm Beach rosebowl - white - nice & unusual, has chips on base
- ___ 409. M'burg Nesting Swan ruffled bowl - amethyst - nick on edge
- ___ 410. Panther round sauces (3) - marigold - choice
- ___ 411. Double Stemmed Rose dome ftd ruffled deep bowl - amethyst
- ___ 412. Sunflower & Diamond vase - marigold
- ___ 413. Blackberry miniature compotes (2) - blue - choice
- ___ 414. Imperial Grape ruffled sauce - purple
- ___ 415. Three Fruits PCE bowl w/ plain back - purple
- 35 **416. Zipper Loop small size finger lamp - marigold - super pretty dark example, WOW! ***
- ___ 417. Star & File rosebowl - marigold
- ___ 418. Smooth Rays large ruffled bowl - green
- ___ 419. Feathered Serpent ruffled bowl - marigold - nice
- ___ 420. Smooth rays compote - green
- ___ 421. Fanciful deep 3 in 1 edge bowl - marigold - radium
- ___ 422. Dragon & Lotus IC shaped bowl - blue - nice
- ___ 423. Rainbow PCE bowl w/BW back - purple
- ___ 424. Imperial Grape master berry bowl - marigold
- ___ 425. Thistle 3 in 1 edge bowl - amethyst
- ___ 426. Butterfly & Berry ftd sauce - marigold
- ___ **427. Sailboat 6" plate - marigold - scarce**
- ___ 428. Lattice & Grape tumbler - marigold, Grape & Gothic Arches tumbler - marigold, Imperial Grape goblet - marigold, Fieldflower tumbler - marigold - all sold choice
- ___ 429. Octagon toothpick - marigold - old?
- ___ 430. Pansy pickle dish - marigold
- ___ 431. Ripple 9" vase w/2 1/2" base - clambroth - some would call this white
- ___ 432. Pansy nappy - green
- 226 **433. Hearts & Flowers PCE bowl w/ribbed back - blue - electric & super, a top rarity, WOW!!!!**
- 477 **434. Hearts & Flowers PCE bowl w/ribbed back - marigold - pastel & super, a beauty**
- ___ 435. 20 Pieces with damage - all sold choice
- ___ 436. 6 Pcs. with damage - all sold choice
- ___ 437. 5 Contemporary pieces - all sold choice

Seeck Auctions

P.O. Box 377
Mason City, Iowa 50402

PRESORTED
FIRST-CLASS MAIL
U.S. POSTAGE PAID
MINNEAPOLIS, MN
PERMIT NO.28534

10



*****AUTO**MIXED AADC 553

Lee Markley
PO Box 306
Mentone, IN 46539-0306



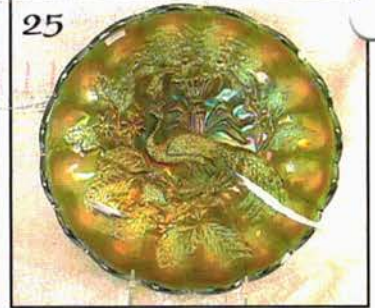
15



270, 416



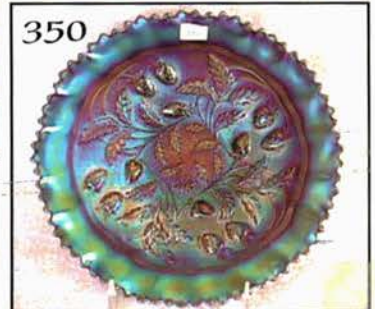
25



434



350



290



250



215,

313

