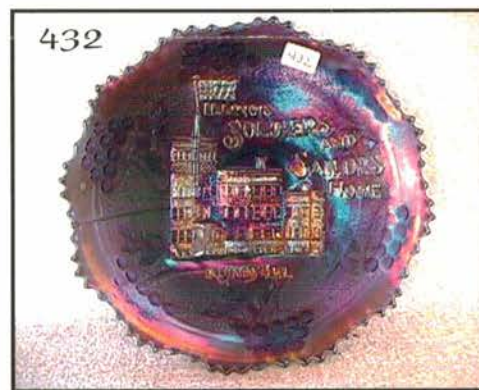
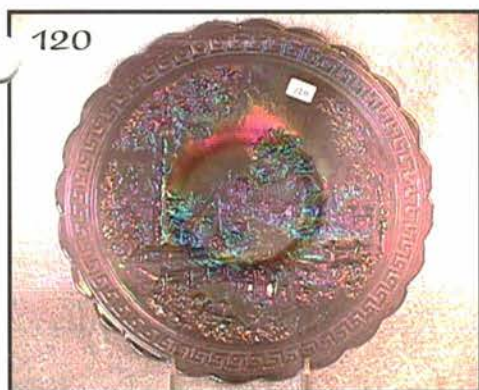
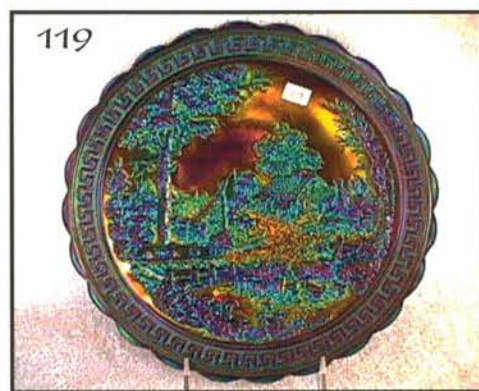


Outstanding Carnival Glass

AUCTION

Saturday, September 22nd, 2001 - 9:00 AM



Holiday Inn

4545 N Lindbergh

St. Louis, MO

(Exit 235B off J-70)

Seeck Auctions

Jim and Jan Seeck
641-424-1116

Call (866) 238-1196 for reservations

Jim and Jan Seeck

641-424-1116

Saturday, September 22, 2001 -- 9:00 am

Holiday Inn North, St. Louis, MO.

PREVIEW: Friday, Sept. 21st, 5:00 P.M.

NO BUYER'S PREMIUM

David and Libby Cotton have decided to scale down to a smaller place. Seeck Auctions is pleased to be selling their Carnival Glass collection at auction in St. Louis, Missouri. David and Libby are from Ohio and were collectors of Millersburg as well as other pieces. Read the auction flyer closely as there are some very unusual and hard to find pieces.

We are at the Holiday Inn North by the airport for this auction. This is a great facility and will be very handy if flying in for the auction. Note the starting time of 9:00 AM. The auction has a few more pieces than usual and we'll be starting a half hour earlier. Hope to see you all here.

RESERVATIONS: Call (866) 238-1196 (Please ask for the Seeck Auction block of rooms)

TERMS: Cash or checks with proper I.D.

ABSENTEE BID POLICY

1. Write-in bids will be accepted by sending the numbers of the item(s) desired and the amount bid on each to: **Seeck Auctions, PO Box 377, Mason City, Iowa 50402.**
2. If known by Auction Company, bids may be done over the telephone. (641)424-1116.
3. You may email your bids to us: **jimjan@seeckauction.com** Continue to include the numbers of the item(s) you would like to bid on and amount bid on each, please include your telephone number.
4. There is a \$5 handling charge for each successful bid. Shipping and insurance charges are additional.
5. Bidders will be notified by phone if their bid(s) are successful. This call will be made 1 - 3 days after the auction.
6. Please have all bids in by (10 p.m. CST) **Wed., Sept. 19th.** All bids (by mail, phone or email) after this date may not be carried out.
7. Please place bids in the following increments: \$1 to \$300 - \$5 increments \$300 up - \$25 increments.
8. **If you do not receive an item that sold for less than your bid, assume we cancelled your bid because the piece of glass had below average color, manufacture problem, damage or was not listed correctly.**
9. We are discontinuing the availability of our auction price lists. Since so many people are online or have access to a computer, the need for this has slowly gone away. Auction results are posted on our website within 5 days of the auction (depending on drive time home from the sale.) Also results are available in many of the club newsletters.

WEBSITE: <http://www.seeckauction.com>

- *****
- | | |
|--|--|
| <input type="checkbox"/> 1. Propeller ruffled compote - green | <input type="checkbox"/> 19. Horse Medallion 7" plate - marigold - lacks irid. on face |
| <input type="checkbox"/> 2. Propeller ruffled compote - lime green - scarce color | <input type="checkbox"/> 20. M'burg Diamonds 6 pc. water set - marigold - very nice set |
| <input type="checkbox"/> 3. Propeller ruffled compote - aqua - rare color | <input type="checkbox"/> 21. Lattice & Points ruffled hat - white |
| <input type="checkbox"/> 4. Propeller ruffled compote - marigold | <input type="checkbox"/> 22. M'burg Hobnail Swirl 10" vase - green - super pretty example, minor peeling at rim |
| <input type="checkbox"/> 5. Propeller round compote - marigold - unusual shape | <input type="checkbox"/> 23. ⁴⁰⁰ M'burg Hobnail Swirl 9 1/2" vases (2) - amethyst - both super nice, choice |
| <input type="checkbox"/> 6. Ground Cherries tumbler - blue | <input type="checkbox"/> 24. Holly ruffled hat - red - brick red color, scarce |
| <input type="checkbox"/> 7. Windmill tumbler - purple | <input type="checkbox"/> 25. Holly ruffled hat - red - amberina base, nice |
| <input type="checkbox"/> 8. Heavy Iris tumbler - marigold | <input type="checkbox"/> 26. Holly ruffled hat - marigold on moonstone - super pretty example of this rare color |
| <input type="checkbox"/> 9. Columbia ruffled compote - marigold | <input type="checkbox"/> 27. Holly ruffled hat - amber - super pretty irid. |
| ¹⁹⁰⁰ <input type="checkbox"/> 10. M'burg Little Stars 6" ruffled sauce - blue - extremely rare & desirable, cobalt blue w/pretty irid., satin & fantastic! | <input type="checkbox"/> 28. Holly ruffled hat - purple - very pretty, rare in this color |
| <input type="checkbox"/> 11. M'burg Holly Whirl 10" ruffled bowl - marigold - radium | <input type="checkbox"/> 29. Holly ruffled hat - red - deeper version of the hat, scarce |
| <input type="checkbox"/> 12. M'burg Holly Whirl 10" ruffled bowl - green - satin | <input type="checkbox"/> 30. Floral & Optic ftd cake plate - white |
| ⁴⁵⁰ <input type="checkbox"/> 13. N's Bushel Basket - aqua opal - pastel & super, super opal & irid. inside & out! | <input type="checkbox"/> 31. Floral & Optic 11" cake plate - marigold on milkglass - scarce color |
| <input type="checkbox"/> 14. N's Bushel Basket - blue - electric & super | <input type="checkbox"/> 32. N's Nearcut water pitcher - marigold - scarce pitcher |
| <input type="checkbox"/> 15. N's Bushel Basket - smokey olive green - different looking | ⁵⁰⁰ <input type="checkbox"/> 33. M'burg Trout & Fly IC shaped bowl - marigold - super dark satin irid. on this scarce bowl |
| <input type="checkbox"/> 16. N's Bushel Basket - ice green - scarce | <input type="checkbox"/> 34. Miniature Morning Glory 4 1/2" vase - purple - super pretty, cute |
| <input type="checkbox"/> 17. N's Bushel Basket - white - nice | <input type="checkbox"/> 35. Miniature Morning Glory 5 1/2" vase - green |
| <input type="checkbox"/> 18. M'burg Strawberry Wreath 10" crimped edge square bowl - green - radium & nice, very rare bowl | <input type="checkbox"/> 36. Miniature Morning Glory 6" vase - marigold |

- ___ 37. Miniature Morning Glory 7" vase - purple
- ___ 38. Miniature Morning Glory 7 1/2" vase - smoke
- ___ 39. Miniature Morning Glory 7 1/2" vase - marigold
- 850 40. **M'burg Courthouse IC shaped bowl - amethyst - radium & very beautiful, rare in IC shape**
- ___ 41. M'burg Holly Spring tri-cornered hdd nappies (2) - green - choice
- ___ 42. M'burg Holly Spring tri-cornered hdd nappy - marigold - fantastic radium irid.
- ___ 43. M'burg Holly Spring tri-cornered hdd nappy - green - satin & nice
- ___ 44. Four Seventy Four 11 pc. punch set - marigold
- ___ 45. Stippled Rays round master berry bowl - white - rare color
- ___ 46. Stippled Rays round sauces (2) - white - scarce, choice
- ___ 47. Stippled Rays round sauce - red - scarce, has amberina base
- ___ 48. Stippled Rays round sauce - blue
- ___ 49. **Long Hobstar 11" fruit bowl - green - rare color for these**
- 4500 50. **M'burg Hanging Cherries 3 in 1 edge 10" bowl w/wide panel back - cobalt blue - one of 2 that I know of, a fantastic M'burg rarity, pretty!**
- ___ 51. M'burg Hanging Cherries 3 in 1 edge 10" bowl w/wide panel back - marigold - satin & pretty
- ___ 52. **M'burg Little Stars 7" ruffled bowl - aqua - scarce color, has small separation on edge**
- ___ 53. M'burg Little Stars 7" ruffled bowl - green - satin
- ___ 54. M'burg Little Stars 7" ruffled bowl - amethyst - satin
- ___ 55. M'burg Little Stars 7" ruffled bowl - marigold - satin & nice
- ___ 56. Persian Medallion large crimped edge compote - marigold
- ___ 57. Orange Tree loving cup - white - extremely rare color, has chip & crack by one handle
- ___ 58. **Orange Tree loving cup - green - scarce color**
- ___ 59. Orange Tree loving cup - amethyst - has nick at points of handle
- ___ 60. **Orange Tree loving cup - blue - super nice example**
- ___ 61. Orange Tree loving cup - marigold - epoxy by handle
- ___ 62. **Open Rose fernery - blue - very rare color**
- ___ 63. Open Rose fernery - violet - also a rare color
- ___ 64. Open Rose fernery - purple
- ___ 65. Open Rose fernery - amber
- 1400 66. **M'burg Ohio Star vase - purple - super fantastic example, a beauty, minor pinpoint on top edge but who cares!**
- ___ 67. Flowering Dill tri-cornered CRE hat - marigold
- ___ 68. Flowering Dill round CRE hat - marigold
- ___ 69. Flowering Dill square CRE hat - marigold
- ___ 70. Flowering Dill ruffled CRE hat - marigold
- ___ 71. Ribbon Tie low 3 in 1 edge bowl - blue - many would call plate, pretty
- ___ 72. Ribbon Tie 3 in 1 edge ruffled bowl - black amethyst - very scarce color & pretty
- 2000 73. **Fashion rosebowl - purple - extremely rare item w/electric irid., beautiful!**
- ___ 74. Lotus & Thistle ruffled bowl - marigold
- ___ 75. **Tiger Lily water pitcher - aqua - very rare color for these**
- ___ 76. Ski Star large ruffled bowl - peach opal
- 500 77. **M'burg Big Fish 3 in 1 edge bowl - marigold - radium & extremely rare, nice**
- ___ 78. Fern Panels square CRE hat - white - square color
- ___ 79. Holly & Berry ruffled bowl - peach opal
- ___ 80. M'burg Rays & Ribbons crimped edge ruffled bowl - amethyst - radium & super
- ___ 81. M'burg Rays & Ribbons crimped edge ruffled bowl - marigold - radium & super
- ___ 82. **Field Flower water pitcher - purple - super pretty example w/great irid.**
- ___ 83. Field Flower tumbler - purple
- ___ 84. **Field Flower water pitcher - amber - scarce color**
- ___ 85. Field Flower water pitcher - aqua - extremely rare color
- ___ 86. Field Flower 7 pc. water set - green - has kind of a lime color look to it
- ___ 87. Field Flower water pitcher - marigold
- ___ 88. **Field Flower tumblers (2) - blue - very rare tumblers, towards the violet side, choice**
- ___ 89. M'burg Fleur-De-Lis dome ftd IC shaped bowl - marigold - radium & super, minor nicks on feet & top edge
- ___ 90. M'burg Hanging Cherries round sauce - green - radium & pretty
- ___ 91. M'burg Hanging Cherries round sauce - marigold - satin
- ___ 92. **Stippled Three Fruits ruffled bowl w/ribbed back - white - very scarce bowl, nice**
- ___ 93. Stag & Holly spt ftd deep round bowl - marigold
- ___ 94. **M'burg Night Stars bon bon - amethyst - radium & super**
- ___ 95. Pony 6 ruffled bowl - marigold
- ___ 96. Vintage small size epergne - green - scarce
- ___ 97. Vintage small size epergne - amethyst
- ___ 98. Vintage small size epergne - green base, blue lily
- ___ 99. Vintage small size epergne - marigold
- ___ 100. Drapery 9" vase - ice green - nick on foot
- ___ 101. Drapery 9" vase - white
- ___ 102. Drapery 7" vase - marigold
- ___ 103. **M'burg Rosalind 9" ruffled bowl - green - satin & super, very hard to find in the 9" size**
- ___ 104. **M'burg Rosalind 9" ruffled bowl - amethyst - satin & nice, again hard to find size**
- ___ 105. Fashion 9" ruffled bowl - smoke
- ___ 106. Hobstar Band straight sided water pitcher - marigold
- ___ 107. Hobstar Band ftd water pitcher - marigold
- ___ 108. Blackberry Spray JIP CRE hat - purple - very rare color, nice
- ___ 109. **Blackberry Spray JIP CRE hat - reverse amberina - very scarce**
- ___ 110. Blackberry Spray JIP CRE hat - amber - scarce color
- ___ 111. Blackberry Spray JIP CRE hat - amethyst
- ___ 112. Blackberry Spray JIP CRE hat - lime green
- 600 113. **Stippled Grape & Cable Variant 9" plate w/ribbed back - marigold - rare & nice**
- ___ 114. Three in One 6" plate - marigold
- ___ 115. Floral & Grape 7 pc. water set - marigold
- ___ 116. Constellation ruffled compote - marigold
- ___ 117. Constellation ruffled compote - white
- ___ 118. Rustic mid-size 15" vase - green
- 3600 119. **Nuart Homestead chop plate - purple - spectacular, one of the best I've ever seen, extremely rare, this shines!**
- 2000 120. **Nuart Homestead chop plate - lavender - ice purple color w/very pretty irid., have not seen one like this before**
- ___ 121. **Nuart Homestead chop plate - green - has olive tint in color, light on irid.**
- 450 122. **Nuart Homestead chop plate - marigold - very pretty example, quite scarce**
- ___ 123. Dogwood Sprays dome ftd ruffled bowl - peach opal
- ___ 124. Octagon 9" ruffled bowl - purple - super pretty, Imperial at its best
- ___ 125. Robin water pitcher - marigold
- ___ 126. **Fashion round compote - smoke - one of just a few known, small bruise on edge of base**
- ___ 127. M'burg Boutonniere ruffled compote - marigold - radium

- ___ 128. M'burg Strawberry Wreath ruffled compote - green - radium & nice
- ___ 129. M'burg Strawberry Wreath ruffled compote - amethyst - radium & nice, a dandy
- ___ 130. M'burg Strawberry Wreath ruffled compote - marigold - radium & scarce
- ___ 131. Rococco vase - marigold
- ___ 132. M'burg Grape Wreath Variant deep flared round sauce - marigold - radium
- 525 133. Hearts & Flowers ruffled bowl w/ribbed back - ice green - very scarce, nice
- ___ 134. Vineyard 6 pc. water set - marigold
- ___ 135. Swan salt - sapphire - very rare color, not many around
- ___ 136. Swan salt - peach opal - has opal on top of head, scarce
- ___ 137. Swan salt - purple - pretty example, scarce
- ___ 138. Swan salt - amethyst - scarce, nice
- ___ 139. Swan salt - marigold - light
- ___ 140. Swan salt - lime ice green
- ___ 141. Swan salt - ice green
- ___ 142. M'burg Rosalind 10" ruffled bowl - green - satin, scarce
- ___ 143. M'burg Rosalind 10" ruffled bowl - marigold - satin
- ___ 144. Ski Star banana boat shaped CRE domed ftd bowl - peach opal
- ___ 145. Tornado small size vase - purple - minor pinpoint on top rib of base, scarce
- ___ 146. M'burg Hanging Cherries 10" IC shaped bowl - green - satin
- 430 147. Fenton's Fne Rib 13" vase - red - very scarce color in this tall size, nice
- ___ 148. Fashion ruffled punch bowl top - purple - who said they didn't make one of these? extremely rare, who has the bottom?
- ___ 149. Fashion punch bowl & base w/round top - marigold - very rare unruffled version
- ___ 150. Fashion punch cups (2) - blue - rare color, choice
- 850 151. 1911 Atlantic City Elks IC shaped bowl - blue - super pretty example of this rare bowl
- ___ 152. M'burg Grape Wreath Variant 8" crimped edge ruffled bowl - green - radium
- ___ 153. M'burg Grape Wreath Variant 8" crimped edge ruffled bowl - marigold - radium
- ___ 154. N's Flute 21" funeral vase - green - rare this tall
- ___ 155. Smooth Panels 17" funeral vase - marigold - scarce
- ___ 156. Acanthus milk pitcher - marigold - scarce
- ___ 157. Three Row Basketweave Open Edge two sides up basket w/wire handle - white - nice
- ___ 158. Grape Arbor ruffled hat - ice green - rare, made from tumbler
- ___ 159. Grape Arbor ruffled hat - white - scarce color
- ___ 160. Grape Arbor ruffled hat - blue - scarce color
- 400 161. M'burg Many Stars ruffled bowl w/6 pt star - amethyst - radium & nice, very rare item
- ___ 162. Flute & Cane water pitcher - marigold
- ___ 163. Flute water pitcher - marigold
- ___ 164. Flute & Cane creamer - marigold
- 500 165. M'burg Blackberry Wreath 10 ruffled bowl - blue - very rare item, blue is a rare color
- ___ 166. Wreathed Cherry banana boat sauces (2) - white - choice
- ___ 167. Imperial Grape water carafe - lavender - scarce color
- ___ 168. Bullseye & Beads 13" vase - amethyst - super
- ___ 169. Rose Show Variant 9" plate - reninger blue - extremely rare plate, not many sold, nice
- ___ 170. M'burg Grape Wreath Variant IC shaped sauce - amethyst - radium, nice
- ___ 171. M'burg Grape Wreath Variant IC shaped sauce - marigold - radium, pretty
- ___ 172. Strawberry 9" plates w/BW back (2) - purple - choice
- ___ 173. Lions ruffled bowl - marigold
- ___ 174. M'burg Hobnail spittoon - amethyst - extremely rare & nice
- 500 175. M'burg Hobnail spittoon - marigold - super example, very rare
- ___ 176. N's Eight Sided bushel basket - purple - scarce
- ___ 177. N's Eight Sided bushel basket - white
- ___ 178. Phoenix Loganberry water pitcher - irid., milkglass, extremely rare pitcher
- ___ 179. Blackberry Spray 2 sides up hat - amethyst opal - very rare color, nice
- ___ 180. Blackberry Spray 2 sides up hat - blue - chip on base
- ___ 181. M'burg Peacock at Urn Mystery ruffled bowls (2) - green - satin & nice, choice
- ___ 182. M'burg Peacock at Urn Mystery ruffled bowl - amethyst - satin & nice
- ___ 183. Ripple 15" funeral vase w/4 3/4" base - marigold - scarce, nice
- ___ 184. Ripple 11" vase w/3 7/8" base - purple - super pretty
- ___ 185. Ripple 12" vase w/3 3/8" base - amber
- ___ 186. Ripple 12" vase w/3" base - blue - extremely rare color, very few known, neat
- ___ 187. Ripple 10" vase w/2 7/8" base - marigold
- ___ 188. Ripple 9" vase w/2 7/8" base - coke bottle green - does have irid.
- ___ 189. Ripple 10" vase w/2 1/2" base - white - very rare color, not many around
- ___ 190. Ripple 9" vase w/2 1/2" base - purple - super
- ___ 191. Ripple 7 1/2" vase w/2 1/2" base - purple - very pretty
- ___ 192. Ripple 5" vase w/2 1/2" base - marigold - short & squatty
- ___ 193. M'burg Peacocks deep round sauces (3) - amethyst - radium & super, all look different, all beautiful in their own way, choice
- ___ 194. M'burg Rosalind 10" 3 in 1 edge bowl - marigold - satin & pretty
- ___ 195. Open Rose 9" round flared bowl - blue - Imperial blue is rare
- 575 196. Wheels 10" round bowl - blue - only one I've heard of, extremely rare & desirable, an Imperial beauty
- ___ 197. Lotus & Grape 9" plate - marigold - super rare, super pretty, one point is chipped
- ___ 198. Imperial Grape 6" plate - amber - very rare color for these, pretty
- ___ 199. Imperial Grape 6" plate - purple - super
- ___ 200. Imperial Grape 6" plate - marigold
- ___ 201. Wine & Roses cider pitcher - marigold - dark, pretty & scarce
- ___ 202. Wine & Roses wine glass - marigold
- 800 203. M'burg Marilyn water pitcher - green - super rare pitcher & pretty, satin
- ___ 204. M'burg Marilyn water pitcher - amethyst - also very rare, has buffed chip on base
- 850 205. M'burg Marilyn water pitcher - marigold - dark & super, may be the rarest of the colors, satin
- ___ 206. N's Dandelion tumbler - white - nice
- ___ 207. Lattice & Daisy tumbler - blue - nice
- ___ 208. Singing Birds tumbler - green - nice
- 425 209. Four Pillars 10" vase - blue - super electric
- ___ 210. Heavy Grape chop plate - amber - scarce & pretty, nice
- ___ 211. Blackberry Spray ruffled hat - reverse amberina opal - extremely rare color & pretty
- ___ 212. Blackberry Spray ruffled hats (2) - red - both super in their own way, choice
- ___ 213. Blackberry Spray ruffled hat - red - has light, bright irid.
- ___ 214. Blackberry Spray ruffled hat - lime green opal - rare color, heat check in bottom of base

- ___ 215. Blackberry Spray ruffled hat - light green - very rare color
 ___ 216. Blackberry Spray ruffled hat - green - also rare
 ___ 217. Blackberry Spray ruffled hat - lime green
 ___ 218. Blackberry Spray ruffled hat - amethyst - rare color - minor heat check in base
 ___ 219. M'burg Grape Wreath Variant 3 in 1 edge 8" bowl - amethyst - radium
 ___ 220. M'burg Grape Wreath Variant crimped edge ruffled 8" bowl - marigold - radium
 ___ **221. Daisy & Drape flared vase - aqua opal - butterscotch & beautiful**
 ___ 222. Daisy & Drape flared vase - white - scarce in flared version
 ___ 223. Field Thistle water pitcher - marigold
 ___ 224. M'burg Grape Wreath Variant ruffled sauces (2) - green - radium, choice
 ___ **225. M'burg Peacock at Urn 10" ruffled bowl - marigold - satin, scarce**
 ___ 226. Kittens cup - marigold
 ___ 227. Kittens 4 sides up dish - marigold
 ___ 228. Scroll Embossed 7" ruffled bowl w/Hobstar & Tassel back - emerald green - super pretty, has heat check in base
 ___ 229. Scroll Embossed 7" ruffled bowl w/Hobstar & Tassel back - purple - pretty
 /600 **230. Grape & Cable powder jar - white - extremely rare item, not many known, nice**
 ___ **231. Holly 9" plate - black amethyst - very rare color, nice**
 ___ 232. Holly 9" plate - white - nice
 ___ 233. Folding Fan crimped edge ruffled compote - peach opal
 /600 **234. Fern Brand Chocolates adv. handgrip plate - amethyst - spectacular, as super as you can get**
 ___ 235. Stippled Rays 6" plate - marigold
 ___ 236. Open Rose ftd centerpiece bowl - olive green - scarce shape
 ___ 237. Open Rose ftd centerpiece bowl - green
 ___ **238. M'burg Trout & Fly ruffled bowl - marigold - radium, nice & very scarce**
400 **239. Tree Trunk 7" squatty vase - white - hard to find squatty**
 ___ **240. Fern Panels ruffled hat - red - very rare hat, nice**
 ___ 241. Fern Panels crimped edge ruffled hat - blue
 ___ 242. Fern Panels ruffled hat - marigold
 ___ 243. Fern Panels JIP CRE hat - marigold
 ___ 244. Shell & Sand 9" plate - smoke - extremely rare plate, has chip off point
 ___ **245. Diamond Lace water pitcher - purple - super**
 ___ 246. M'burg Grape Wreath Variant tightly crimped edge sauce - green - radium & pretty
 ___ **247. M'burg Rays & Ribbon deep flared bowl - marigold - radium & pretty, this is the blank shape**
 700 **248. Tree Trunk 17" funeral vase - white - extremely rare, not many around, chip off of one flute on top of vase, nice**
 ___ 249. Fan open sugar bowl - peach opal
 ___ 250. Little Barrel - smoke - minor nick on top
 ___ 251. Little Barrels (2) - marigold - both have nicks
 ___ **252. M'burg Hanging Cherries 9" ruffled bowl - marigold - satin, scarce size**
 ___ **253. N's Butterfly bon bon w/ribbed back - purple - super pretty, scarce**
 ___ **254. Persian Medallion 7" plate - marigold - very rare plate in this size**
 ___ 255. Daisy Webb tri-cornered CRE hat - marigold - super
 ___ 256. Shell & Sand ruffled bowl - aqua - scarce color
 ___ **257. M'burg Seacoast pintray - green - has small chip on back edge, very rare & pretty, radium**
 ___ **258. M'burg Seacoast pintray - amethyst - small chip on back edge, also very rare & pretty**
 ___ 259. Fenton's Grape & Cable ruffled bowl - brick red - nice
 ___ 260. Hearts & Flowers ruffled compote - white - pretty
 ___ 261. M'burg Blackberry Wreath 3 in 1 edge bowl - amethyst - radium
 ___ 262. M'burg Blackberry Wreath 3 in 1 edge bowl - marigold - satin
 650 **263. Central Shoe Store adv. ruffled bowl - amethyst - super pretty & very rare**
 ___ 264. Rising Sun water pitcher - marigold - nice
 ___ 265. M'burg Hanging Cherries 10" ruffled bowl - green - satin & super
 ___ 266. Briar Patch square hat - blue - quite scarce
 ___ **267. M'burg Grape Leaves 3 in 1 edge bowl - purple - super radium irid., minor edge nicks**
 ___ 268. Persian Garden 6" plate - marigold
 ___ **269. M'burg Leaf & Little Flowers ruffled compote - radium & super, minor buffing on base**
 ___ 270. Octagon small size water pitcher - marigold
 ___ 271. M'burg Grape Wreath crimped edge ruffled 7" bowl - marigold - radium, nice
 ___ **272. Blackberry Spray square shaped hat - red - has red irid., pretty**
 ___ 273. Blackberry Spray square shaped hat - aqua - scarce color
 ___ 274. Grape & Cable hatpin holder - purple - pretty
 ___ 275. M'burg Hanging Cherries butterdish - amethyst - has chips on bottom
 ___ 276. Four Flowers Variant ruffled bowl - teal green - pretty
 ___ **277. M'burg Seaweed 3 in 1 edge 10" bowl - amethyst - satin & super**
 ___ 278. Orange Tree breakfast creamer - white
 ___ **279. Diamond Rib 7" squatty vase - white - pretty, scarce**
 ___ 280. Scotch Thistle crimped edge ruffled compote - marigold
 2000 **281. M'burg Hanging Cherries 3 in 1 edge sauce - blue - fantastic irid., extremely rare, super satin!**
 ___ 282. Orange Tree ftd berry dish - white
 ___ **283. M'burg Zig Zag IC shaped bowl - marigold - radium & pretty**
 ___ 284. Petal & Fan ruffled sauces (2) - white - choice
 ___ 285. Grape & Cable water pitcher - marigold - pretty
 ___ 286. M'burg Holly Sprig card tray shaped bon bon - green - radium & super
 ___ 287. M'burg Holly Sprig flattened out card tray shaped bon bon - marigold - any flatter, it would be a plate, radium
 ___ 288. M'burg Holly Sprig card tray shaped bon bon - marigold - radium
 ___ 289. M'burg Holly Sprig card tray shaped bon bon - green - satin
 ___ 290. M'burg Isaac Benesch 54th Anniv. Holly Sprig card tray shaped bon bon - marigold - satin
 ___ **291. Circle Scroll tri-cornered hat - purple - electric & super**
 ___ **292. Circle Scroll tri-cornered hat - marigold - pretty**
 ___ **293. Stippled Three Fruits spt ftd ruffled bowl - white - frosty, nice**
 ___ 294. Large Rabbit bank - marigold
 ___ 295. Small Rabbit bank - marigold
 1750 **296. M'burg Morning Glory tumbler - marigold - extremely rare tumbler, very few known, a dandy Four Seventy Four tumbler - blue - extremely rare color, has electric highlights, neat**
 455 **298. Italian Hobnail tumbler - black amethyst - never seen before**
 ___ **299. M'burg Cherries tumbler - green - radium & pretty**
 ___ 300. Grape & Cable Variant 9" plate w/BW back - purple
 625 **301. M'burg Little Stars 9" IC shaped bowl - marigold - radium & super fantastic piece**

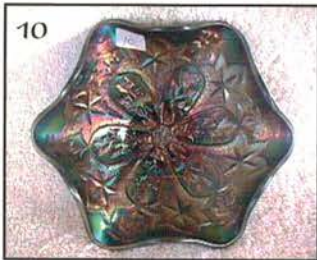
- ___ 302. French Knots square shaped hat - amethyst
- ___ 303. **Blackberry ftd ruffled candy dish w/Daisy & Plume exterior - lime green - super pretty, very rare, made from the rosebowl**
- ___ 304. M'burg Holly Sprig round flared 6 1/2" bowl - green - radium
- ___ 305. Memphis punch cups (2) - white - choice
- 1250 306. **M'burg Peacocks master IC shaped bowl - amethyst - radium & spectacular, fantastic irid.!**
- 1100 307. **M'burg Peacocks master IC shaped bowl - green - radium & super, a real beauty, rare**
- 650 308. **M'burg Peacocks master IC shaped bowl - marigold - radium & very rare**
- ___ 309. Thin Rib & Drape 5 1/2" vase - marigold - cute
- ___ 310. **Thin Rib & Drape 4" vase w/flared top - marigold - a neat piece**
- ___ 311. Scroll Embossed miniature compote - amethyst - super & scarce
- 550 312. **M'burg Many Stars 3 in 1 edge bowl - marigold - satin & nice, has six point star**
- ___ 313. Holly 3 in 1 edge bowl - blue
- ___ 314. **M'burg Tulip Scroll 9 1/2" vase - amethyst - radium & nice, very scarce vase**
- 400 315. **M'burg Tulip Scroll 12" vase - green - also very rare & nice**
- ___ 316. Holly square shaped hat - aqua - scarce color
- ___ 317. **Brooklyn Bridge 10 ruffled bowl - marigold - scarce & desirable**
- ___ 318. Raindrops dome ftd bowl - peach opal
- ___ 319. M'burg Hanging Cherries 7" IC shaped bowl - marigold - satin, nice
- ___ 320. M'burg Hanging Cherries 7" IC shaped bowl - green - satin
- ___ 321. M'burg Hanging Cherries 7" IC shaped bowl - amethyst - radium
- ___ 322. Pansy ruffled bowl - purple
- ___ 323. M'burg Blackberry Wreath tightly crimped edge round sauce - marigold - radium & super
- ___ 324. Orange Tree IC shaped bowl - white
- ___ 325. Imperial Grape 9" plates (2) - green - choice
- ___ 326. **M'burg Peacock Whimsey Proof berry bowl - green - radium, pretty**
- ___ 327. **M'burg Peacock Whimsey Proof berry bowl - amethyst - radium, pretty**
- ___ 328. **M'burg Peacock Whimsey Proof berry bowl - marigold - radium, super**
- ___ 329. Fenton's Grape & Cable 7" IC shaped bowl - amber - scarce color
- ___ 330. **M'burg Hobnail rosebowl - amethyst - radium, nice**
- ___ 331. **M'burg Hobnail rosebowl - marigold - radium, nice**
- ___ 332. Four Flowers 6" plate w/BW back - peach opal
- ___ 333. Four Flowers 6" plate w/plain back - peach opal - nice
- ___ 334. Four Flowers IC shaped sauce w/plain back - peach opal - more rare than the plates
- ___ 335. Diamond & Daisy Cut water pitcher - marigold
- ___ 336. M'burg Holly Whirl 9" deep round bowl - green - radium & pretty, this is the blank shape
- ___ 337. **Circle Scroll 2 sides up hat - purple - electric & pretty**
- ___ 338. Circle Scroll 2 sides up hat - marigold - pretty
- ___ 339. M'burg Holly Sprig Variant 8" round bowl - marigold - radium & super, a beauty
- ___ 340. Chrysanthemum ruffled bowl - marigold
- 475 341. **M'burg Big Fish IC shaped bowl - marigold - radium, very scarce in this shape**
- ___ 342. Pinecone saucer shaped plate - green - scarce
- ___ 343. Pinecone 6" plate - blue
- ___ 344. Pinecone 6" plate - marigold
- 700 345. **Embroidered Mums ruffled bowl w/ribbed back - ice green - super pretty & very rare**
- ___ 346. Persian Medallion 6" plate - marigold
- ___ 347. Star & File water pitcher - marigold
- ___ 348. M'burg Blackberry Wreath 10" 3 in 1 edge bowl - green - radium, pretty
- ___ 349. Fine Cut & Roses rosebowl - green
- ___ 350. **Imperial Grape rosebowl - amber - very rare item, nice**
- ___ 351. M'burg Hanging Cherries 9" IC shaped bowl - green - satin, very scarce size
- ___ 352. **Kittens toothpick - blue - very scarce, nice**
- ___ 353. Kittens toothpick - marigold
- ___ 354. M'burg Little Stars 9" 3 in 1 edge bowl - marigold - satin, has light irid.
- ___ 355. Holly goblet shaped compote - red - very scarce & nice
- ___ 356. Persian Medallion hair reciever - marigold - nice
- ___ 357. Palm Beach 4" whimsey vase - marigold - made from tumbler, neat
- ___ 358. M'burg Multi Fruits & Flowers punch cup - marigold
- ___ 359. M'burg Holly Sprig 10" crimped edge ruffled bowl - marigold - radium, pretty
- ___ 360. **M'burg Vintage 3 in 1 edge sauce w/Hobnail exterior - green - satin & extremely rare, one of two we know of, heat check in base**
- ___ 361. Diamond Rings rosebowl - marigold - dark
- 450 362. **M'burg Roses & Fruits ftd bon bon - amethyst - extremely rare bon bon, not many sold, neat!**
- ___ 363. Big Basketweave 5" unswung vase - white - neat
- ___ 364. **Daisy Webb ruffled hat - purple - super pretty**
- ___ 365. M'burg Hanging Cherries creamer - amethyst - satin, nice
- ___ 366. **Boggy Bayou 6" squatty vase - lime green opal - extremely rare vase, not many around, does have heat check in base**
- 800 367. **M'burg Trout & Fly ruffled bowl - green - satin & super, as pretty as they get**
- ___ 368. **M'burg Trout & Fly ruffled bowl - amethyst - satin & nice, quite scarce**
- ___ 369. M'burg Blackberry Wreath 3 in 1 edge 7" bowl - green - satin, pretty
- ___ 370. File & Fan ruffled compote - peach opal - scarce color
- ___ 371. Diamond Points 11" vase - white - nice
- ___ 372. M'burg Holly Sprig tightly crimped edge sauce - marigold - radium & super
- ___ 373. **The Great House of Isaac Benesch & Sons adv. ruffled bowl - amethyst - scarce & nice**
- 450 374. **M'burg Tulip Scroll 7" squatty vase - amethyst - radium & super, very, very rare, a neat vase**
- ___ 375. Inverted Feather parfait - marigold
- ___ 376. **M'burg Peacock at Urn master berry bowl - marigold - radium & pretty, chips on base**
- ___ 377. Octagon 8" vase - marigold - scarce
- ___ 378. Fanciful 3 in 1 edge bowl - white - nice
- ___ 379. Holly ruffled compote - lavender
- 625 380. **Holly 2 sides up hat - red - cherry & spectacular!**
- ___ 381. Holly 2 sides up hat - lime green - has marigold overlay
- ___ 382. M'burg Strawberry Wreath 7" ruffled bowl - marigold - radium & pretty
- ___ 383. M'burg Rosalind 10" IC shaped bowl - marigold - satin
- ___ 384. M'burg Holly Sprig Variant deep 6" tightly crimped bowl - marigold - radium & pretty
- ___ 385. **Boarder Plants dome ftd 3 in 1 edge bowl - purple - extremely rare piece & super, does have chip on base**
- ___ 386. **M'burg Peacock ruffled sauce - amethyst - radium & nice, no bee, no beads**
- ___ 387. Six Petals ruffled bowl - purple
- ___ 388. **Blackberry Spray ruffled hat w/2 sets of blackberries - red - cherry red, pretty**

389. Big Basketweave 10" vase - lavender w/marigold overlay
390. M'burg Hobnail Swirl rosebowl - amethyst
391. M'burg Hobnail Swirl - marigold - scarce
392. Strawberry ruffled bowl w/BW back - purple
393. M'burg Peacock IC shaped sauce - green - radium & pretty, has no bee and no beads
394. Hobstar Flower ruffled compote - olive green - odd color
395. M'burg Peacock at Urn IC sauce - amethyst - satin & rare, has beads & has bee
396. M'burg Peacocks sauce - amethyst - satin, no bee, no beads
397. Vintage IC shaped 10" bowl - odd very dark blue
398. M'burg Sunflower pintray - green - chipped leaf
399. M'burg Sunflower pintray - amethyst - scarce & desirable
400. M'burg Holly Sprig 8" flared round bowl - amethyst - radium
401. Daisy Webb JIP CRE hat - purple - scarce
402. M'burg Holly Sprig 7" round bowl - green - radium & nice
403. M'burg Blackberry Wreath deep round sauce - marigold - radium
404. M'burg Leaf & Little Flowers sherbert shaped compote - green - satin
405. Propeller giant compote - marigold
406. Persian Garden 6" plate w/pool of pearls back - white - nice
407. Four Seventy Four punch cup - smoke
408. Four Seventy Four punch cups (2) - emerald green - choice
409. Vintage 3 in 1 edge bowl - odd amethyst - almost a brown color
410. Spiralex 11" vase - white - nice
- 500 411. Eagle Furniture Co. adv. 6" plate - amethyst - extremely rare plate, has gold irid.
412. M'burg Blackberry Wreath 7" IC shaped bowl - green - satin & super
413. Daisy & Drape Flared in vase - white - scarce
414. Imperial Grape 8" plate - lime green
- 700 415. M'burg Courthouse ruffled bowl - amethyst - radium & super pretty
416. Grape Arbor tumbler - white
417. Imperial Grape tumbler - violet
418. Imperial Grape tumbler - purple
419. Imperial Grape tumbler - olive green
420. Imperial grape tumbler - marigold
421. M'burg Peacock at Urn 3 in 1 edge mystery bowl - green - radium & scarce
422. M'burg Peacock at Urn 3 in 1 edge mystery bowl - green - satin & super, a beauty
423. M'burg Peacock at Urn 3 in 1 edge mystery bowl - marigold - also satin & super
424. M'burg Holly Sprig tri cornered 6" bowl - amethyst - radium & nice
425. Vintage powder jar - marigold
426. M'burg Strawberry Wreath 8" square bowl - amethyst - radium, nice
427. Grape & Cable pin tray - purple - scarce, has open bubble on edge
428. Grape & Cable pin tray - marigold - scarce, nice
429. Rustic 12" vase - white - nice
430. Star Spray 8" plate - smoke
431. M'burg Grape Wreath Varient 8" ruffled bowl - green - radium, nice
- 1300 432. Illinois Soldiers & Sailors 7" plate - blue - super example of this rare plate
433. Acorn Burrs punch cup - ice green
434. Acorn Burrs punch cup - white
435. Octagon water goblet - powder blue - scarce color
436. Garden Mums round 6" bowl - amethyst - blank for many adv. pieces, lacks irid.
437. Star Medallion vase - smoke - scarce color
438. Daisy Dear ruffled bowl - purple - pretty
439. Orange Tree hatpin holder - marigold - pretty, normal chip on foot
440. Blackberry Bramble ruffled compote - olive green
441. French Knots ruffled hat - amethyst
442. Circle Scroll JIP hat - purple - scarce
443. Circle Scroll JIP hat - marigold - pretty
444. M'burg Blackberry Wreath 3 in 1 edge sauce - green - satin
445. Open Rose 5" round berry bowl - purple - pretty
446. M'burg Grape Wreath 7" 3in 1 edge bowl - amethyst - radium, nice
447. Hobstar & Tassel 6" round bowl - green
448. M'burg Hobnail Swirl spitton - amethyst - super pretty, rare
449. Diamond Rib 8" vase - green
450. Orange Tree standard size mug - amber - scarce, nice
451. Blackberry miniature compote - blue
- 825 452. M'burg Bullseye & Loops 11" vase - marigold - very rare item
453. Inverted Strawberry 7" round bowl - green
454. M'burg Blackberry Wreath ruffled sauce - marigold - radium
455. Fern ruffled compote - green
456. M'burg Grape Wreath 6 1/2" tri-cornered bowl - marigold - radium
- 2100 457. M'burg Hanging Cherries ruffled sauce - blue - extremely rare item, I don't remember ever seeing another ruffled, super satin irid., WOW!
458. M'burg Hanging Cherries ruffled sauce - green - scarce, nice
459. Blackberry Open Edge two sides up basket - lime green
460. Blackberry Wreath CRE flattened out hat - aqua - rare shape, scarce color
461. Single Flower 3 in 1 edge bowl - peach opal
462. Blackberry Open Edge square shaped hat - white - nice
463. M'burg Holly Sprig crimped edge round sauce - marigold - radium
464. Fenton's Peacock at Urn ruffled compote - marigold
465. Rainbow ruffled bowl - purple
- 2300 466. Homestead chop plate - green - super pretty & very rare, has an emerald look, beautiful irid.
- 4500 467. NuArt Homestead chop plate - amber - fantastic example of a rare plate, WOW!
468. Homestead chop plate - white - very rare color, nice
469. Smooth Panels 5" vase w/3 1/2" base - marigold
470. Smooth Panels 4 1/2" vase w/2 1/2" base - marigold
471. Fleur De Lis #5 vase - marigold
472. Diamond & Daisy Cut compote - marigold
473. Flute & Cane stemmed champagne - marigold
474. Flusted Block milk pitcher - marigold
475. Four Seventy Four sherbert - marigold, Fashion 10" IC shaped bowl - marigold, Hobstar & Arches 9" IC shaped bowl - marigold, Frosted Block 9" plate - marigold, Four Seventy Four compote - marigold, Star & File 6" plate - marigold, Stippled Rays card tray shaped bon bon - olive green, M'burg Whirling Leaves ruffled bowl - marigold - chip on base - ALL SOLD CHOICE

Seeck Auctions

PRESORTED
FIRST-CLASS MAIL
U.S. POSTAGE PAID
MINNEAPOLIS, MN
PERMIT NO.28534

P.O. Box 377
Mason City, Iowa 50402



*****AUTO**MIXED AADC 553

Lee Markley
PO Box 306
Mentone, IN 46539-0306

