

FANTASTIC FALL CARNIVAL GLASS AUCTION

Saturday, September 15, 2001 9:00 a.m., C.D.T.

250

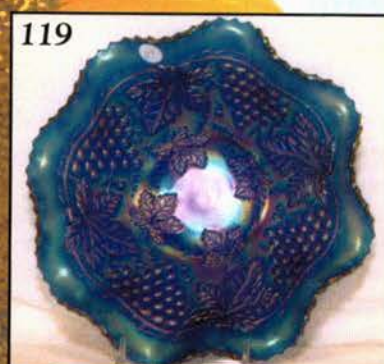


284

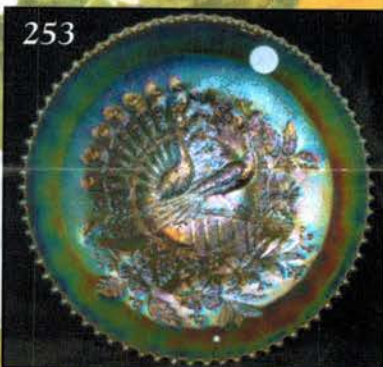


275

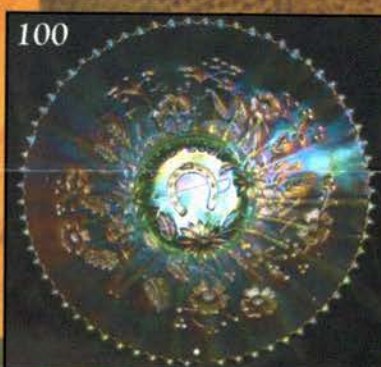
119



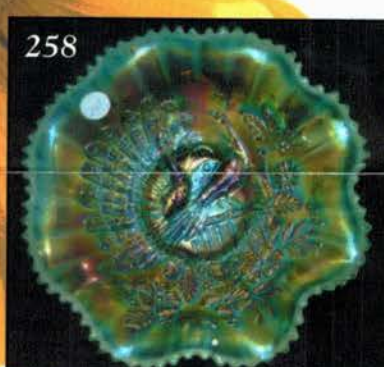
253



100



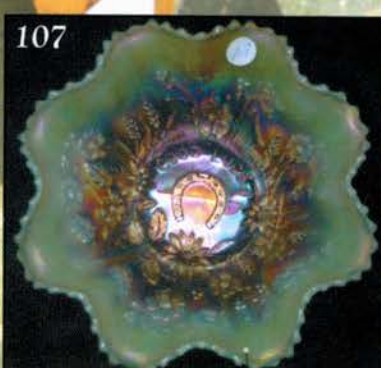
258



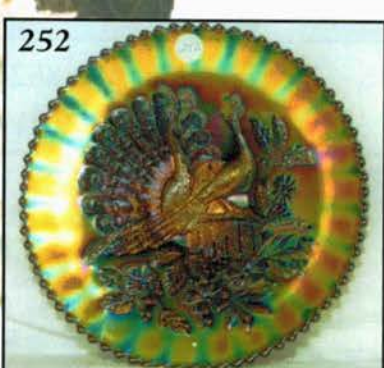
153



107



252



Held Inside the Mickey Reichel Auction Center, Boonville, Missouri

Office: 660-882-5292 • Home: 660-882-5283

Direct e-mail: mreichel@undata.com

NEW WEB SITE ON: <http://www.yourauctionpage.com/reichel>



Held Inside the Mickey Reichel Auction Center

1 Mile North of I-70 on Hwy. 5, Exit 101, Boonville, Missouri • 20 Miles West of Columbia, MO on I-70

Preview Friday 12 p.m. - 6 p.m. and 7:30 a.m. - 9:00 a.m. Day of Auction



TERMS: Cash or Good Check, VISA and MasterCard accepted.



3% Handling Fee on all purchases except for payment of cash or check. Proper I.D. required.

WEBSITE: www.yourauctionpage.com/reichel

ABSENTEE BID POLICY:

WRITE IN BIDS: If you are unable to attend the auction, we will be happy to accept absentee bids which must be received by THURSDAY, SEPTEMBER 13, 2001. Don't Delay. E-Mail: mreichel@undata.com

FOR AUCTION PRICE RESULTS: Send \$3.00 and Large S.A.S.E. to 516 Third Street, Boonville, MO 65233-1536

PLEASE NOTE: There is a **\$5 handling charge for each successful bid which will be added to the selling price** for all write-in bids. This is in addition to the cost of postage, insurance and packing. Your write-in bid will be entered just as if you are present and bidding. **Successful bidders will be notified in 1 to 3 days by the auctioneer (so be sure to include your phone number).** Direct mail bids to Auctioneer **Mickey Reichel, 516 Third Street, Boonville, MO 65233-1536.** Terms: Cash or Check accepted with proper I.D. and Social Security Number and References. Announcements made day of the auction supercede all printed material. Not Responsible for Accidents or Sold Items.

No return on any items once they leave the Auction Center (No Exceptions).****

Call for additional information: 660-882-5292 days or 660-882-5283 evenings before 9:00 p.m.

FAX: 660-882-5292 (evening hours start FAX transmission after beep)

MAIL BIDS: Items are bid on in perfect condition with average or above iridescence OR as listed in the brochures. Bids will not be carried out when damage on an item has been found during the auction.

PEOPLE PRESENT AT AUCTION ARE RESPONSIBLE FOR FINDING ANY PINHEADS, WEAR, SPOTTINESS, MANUFACTURER'S DEFECTS OR ANY OTHER MINOR FLAWS, ETC. *****

NOTE: Read each line, as we have accentuated the type of no particular piece, all are special.

Make Reservations EARLY at one of these local motels:

Days Inn: 660-882-8624 • Comfort Inn: 660-882-5317 • Super 8: 660-882-2900

Auction Consists of Rarity, Great Irid. and Variety

THANK YOU FOR ATTENDING TODAY

1. M - 10 1/4" Tri-Corner, CRE Stippled Rays Bowl
2. G - Captive Rose Bon Bon - Edge Chipped
3. M - 11" Ball Ftd. Sq. 8-Ruffle Stag and Holly Bowl
4. M - Fenton Butterfly Bon Bon - Dark and Nice
5. M - 8" CRE Fenton Vintage Grape Bowl
6. Scarce A - 9" Collar Base 8-Ruffle Dragon and Lotus Bowl - Extra Nice
7. Deep B - 8 1/4" ICS Collar Base Dragon and Lotus Bowl
8. Deep B - 9" Collar Base 8-Ruffle Dragon and Lotus Bowl
9. Scarce A - 9" Collar Base 8-Ruffle Peacock and Grape Bowl
10. Olive G - Ball Ftd. 9 1/4" Ruffled Panther Master Berry Bowl

11. B - 9 1/4" Rare Collar Base Fenton Peacock and Grape Plate - Stretch Gold & Silver Irid.
12. B - 9 1/4" Fenton Peacock at Urn Plate - Always In Demand
13. M - 9 1/4" Fenton Peacock at Urn Plate - Also Desirable
14. B - 9" Fenton Captive Rose Plate - Radium Silver and Gold Finish
15. Scarce A - 9 1/4", 6-Ruffle Fenton Holly Bowl
16. G - 9", 8-Ruffle Fenton Holly Bowl
17. Dark M - 9", 8-Ruffle Fenton Holly Bowl
18. G - Mlbg. 9 1/4", 6-Ruffle Collar Base Fleur De Lis Bowl - Radium Finish
19. G - Mlbg. 6-Ruffle Nesting Swan Bowl - Minor Rim Nick
20. G - Mlbg. 10", 6-Ruffle Primrose Bowl - Rich Satin Finish
21. G - 9 1/2" Mlbg. Collar Base Rays and Ribbons Bowl - Unusual Flared Rim

22. M - 10" Mlbg. 6-Ruffle Primrose Bowl - Soft Satin Finish
23. **A - Mlbg. Sunflower Pin Tray - Excellent Color - Minor Buffing On Tip**
24. M - Ball Ftd. 10", 8-Ruffle Two Flowers Bowl
25. **PO - Westmoreland 9" Dogwood Plate - One Of Very Few Known!**
26. **Persian Blue Opal Base - 8½", 6-Ruffle Westmoreland Daisy Wreath Bowl**
27. A - 10", 6-Ruffle Feathered Serpent Bowl - Genuinely Scarce
28. **P - 11¼" Dugan 6-Ruffle Victorian Bowl - Scarce and Extra Nice**
29. M - 10" Imp. Acanthus Chop Plate - Pretty Pastel Irid.
30. **P - 9" Imp. 8-Ruffle Grapes Bowl - Multi Electric Beauty**
31. Beautiful W - 9" Fanciful Plate - Slightly Turned Up Edge
32. **Scarce B - N 9", 8-Ruffle Stippled Three-Fruits Bowl - Rib Ext. - Near Electric**
33. **Scarce A - 9", 3 in 1 Edge, Ribbon Tie Bowl - Extra Pretty**
34. **Scarce A - Collar Base, 9" Sq. 8-Ruffle Chrysanthemum/Windmills Bowl**
35. Soft Ice B - N 9¼" Low PCE Nippon Bowl - Pretty Blues and Yellows
36. PO - CRE Dugan Question Marks Low Compote
37. PO - Dugan 10¼", 6-Ruffle Ski Star and Compass Bowl - Pretty
38. **Australian M - 5½", 8-Ruffle Magpie Berry Bowl**
39. Australian - BA - 7¼", 12-Ruffle Butterfly Bush and Christmas Bells Compote
40. **Jain - M and Frosted - 9¼" Fish Vase - Scarce and Nice**
41. **Australian - BA - 8½" Lily Vase - 2½" Base, 4½" Top**
42. Australian - M - 7¼", 12-Ruffle Butterfly Bush Compote
43. Australian - BA - Lg. 9½" Rd. Shallow Butterfly Bush Compote - Super Example
44. Australian - M - 8" Rd. Butterfly Bush Compote - Also Scarce
45. Australian - M - 9½", 16-Ruffle Large Swan Bowl - Has Registration Number
46. Australian - M - 10", 8-Ruffle Magpie Large Bowl - Beautiful Irid.
47. Australian - BA - 9½", 12-Ruffle Kingfisher Large Bowl w/Wattle Leaves
48. Australian - M - 5½", 12-Ruffle Shrike Berry Bowl - Super Nice
49. Australian - M - 9½", 16-Ruffle Doe Kangaroo Lg. Bowl - Very Pretty
50. Australian - M - 5¼", 12-Ruffle Kangaroo Berry Bowl
51. Australian - Pink - 5¼", 8-Ruffle Magpie Berry Bowl - Non-Iridized
52. **Australian - M - 1932 Crown Crystal Banana Split Dish - Scarce Find**
53. Australian - Crystal - 5¼" Oval Dish w/Marigold Golden Pansy In Intaglio Base
54. Australian - BA - 9¼", 8-Ruffle Radium Electric Magpie Bowl
55. Australian - BA - 9¼", 12-Ruffle Multi Electric Shrike Bowl
56. Australian - BA - 9½" Mid-Size Gum Tips Vase - 3¼" Base, 5½" Top
57. **Australian - M Top - 10" w/Crystal Base Gum Tips Vase - 3½" Base, 5" Top**
58. Australian - Vas. Topaz - Banded Diamonds Tumbler - Non-Irid - Rare. Glows
59. Australian - Crystal 5" Rd. Marigold Base Berry Bowls - ? Pattern ? - Choice A or B
60. M - 7" Palm Beach Banana Boat Shaped Bowl - Super Ex.
61. M - N Grape and Cable Whimsey Pin Dish from Punch Cup
62. **Rare G - 9" Sq. 8-Ruffle Fenton Plaid Bowl - Light Center**
63. **Lav. - Mlbg. 7¼" Low Rd. Hanging Cherries Bowl - Tried to be a Plate**
64. Radium M - Mlbg. Boutonniere Ruffled Compote
65. G - Mlbg. 8¼" ICS Blackberry Wreath Bowl - Great Color
66. Pastel M - 8" Rd. Dugan Roundup Bowl - Has Milky Scallops
67. **PO - 9" CRE Dome Ftd. Dugan Soutache Plate - Frosty and Rich Irid.**
68. Stretch Celeste Blue - 9½" Plate, #639, 27 Ribs - Northwood - Plate 585
69. **RED SLAG - Orange Tree Mug - 2½" Base, 3½" Top**
70. Hatpin - BA - Six Plums - Multi Electric
71. Hatpin - BA - Big Butterfly - Blue Irid.
72. Super G - 9½" N Thin Rib Vase - A Real Beauty
73. M - Spiralex Candlestick
74. **P - 8¼" N 8-Ruffle Strawberry Bowl - BW Ext. - Thick Multi-Electric!**
75. **Soft B - 9" Collar Base Sq. 8-Ruffle Dragon and Lotus Bowl - Electric Blues and Yellows**
76. **W - 9" Low Ruffled Dugan Fanciful Bowl - Blues and Pinks**
77. **Super M - 10¼" Low 6-Ruffle Ball Ftd. Fantail Bowl - Stunning Blues and Pinks**
78. **White Opal?/PO - Dome Ftd. 9", 10-Ruffle Dugan Dogwood Spray Bowl - 2" Opal**
79. **Rich M - 9", 6-Ruffle Fenton Concord Bowl - Pinks, Yellows, Greens**
80. P - 8" Imp. Heavy Grape Plate - Rainbow Electric Coloration!
81. Honey Amber - Lg. Dugan Wreathed Cherry Banana Boat - Pastel Blues, Yellows and Pinks
82. Scarce Clam - Lg. 7" Rd. Imp. Star and File Compote - Clear Base - Radium Finish
83. P - 6½" Imp. Heavy Grape Rd. Bowl - Lots of Color
84. M - Stippled N Grape and Cable Bon Bon - Pinks and Golds
85. Clam - 9¼" Imp. Star Medallion Plate - Green Highlights
86. **M - Mid-Size J.I.P. 8¼" Imp. Morning Glory Vase - 3½" Base, 7" Flare**
87. **Super Rich M - 6½", 6-Ruffle Fenton Holly Hat**
88. Scarce Ice G - 5¼" ICS Grape and Cable Bowl
89. **Yellow Vas. - Ball Ftd. J.I.P. Horse Medallion Bowl**
90. A - 8¼", 6-Ruffle Heart and Vine Bowl - Scarce Color

237



204



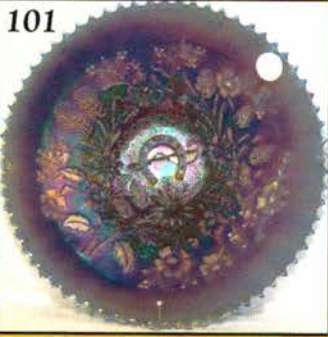
239



238



101



264

263



279

277



251



95



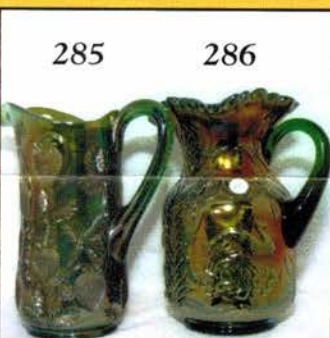
274

272

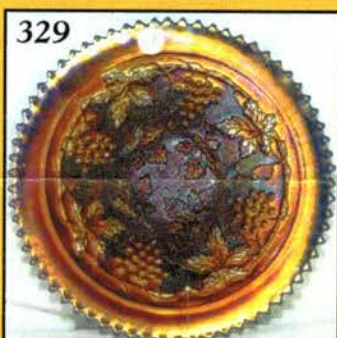


285

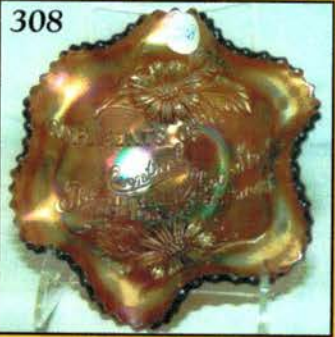
286



329



308



270

268



283

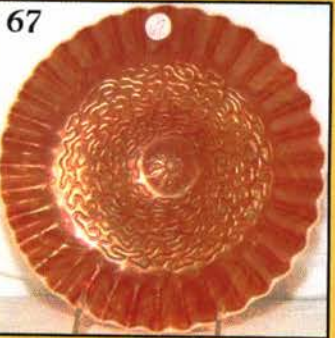
281



262



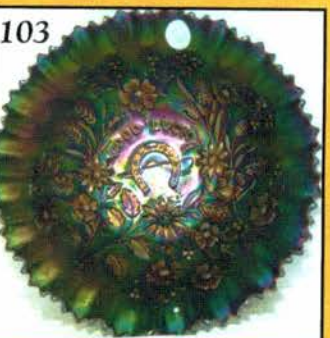
67



104-A



103



178



- _____ 91. Rich Radium M - 9", 8-Ruffle Imp. Pansy Bowl - Loads of Color
- _____ 92. G - Spat Ftd. 8", 8-Ruffle Dragon and Lotus Bowl - Normal Nicks on Feet
- _____ 93. **G - 8" ICS Fenton Autumn Acorns Bowl - Beautiful Example**
- _____ 94. Scarce P - Dugan Question Marks 2-Handled Bon Bon
- _____ 95. **B - 9½" Fenton Peacock at Urn Plate - Beautiful Gold and Bronze Irid.**
- _____ 96. A - N 8¼" Dome Base 8-Ruffle Star of David and Bows Bowl - Above Average
- _____ 97. M - Dugan Wreath of Roses Tri-Corner Candy Dish Whimsey
- _____ 98. **Radium M - Mlbg. 8½", 3 in 1 Grape Wreath Bowl - 8-Point Star Center - Super Example**
- _____ 99. Rich M - 7", 6-Ruffle Leaf Chain Bowl - Sharp Point on Rim
- _____ 100. **Rich Pastel Ice Green - 9" N Good Luck Plate - Rib Ext. - Few Known - Top of the Line Rarity!**
- _____ 101. **B - 9" N Stippled Good Luck Plate - Rib Ext. with Thin Base**
- _____ 102. **Unusual B - N 8-Ruffle Stippled Good Luck Bowl - Rib Ext. with Thin Base - Violet Tints**
- _____ 103. **P - PCE N Good Luck Bowl - Scarce BW Ext. - Multi Electric**
- _____ 104. G - N 8-Ruffle Good Luck Bowl - Rib Ext. - Extra Nice Example
- _____ 104A. P - N 9" Good Luck Plate - Scarce BW Ext. - Always In Demand
- _____ 105. **P - N 8-Ruffle Good Luck Bowl - Rib Ext. - Excellent Iridescence**
- _____ 106. **Peachy M - N 8-Ruffle Stippled Good Luck Bowl - Rib Ext. w/Thin Base - Superb Pinks and Blues**
- _____ 107. **Rare AO - N 8-Ruffle Good Luck Bowl - Rib Ext. - Way Above Average**
- _____ 108. True Renniger B - N 8-Ruffle Stippled Good Luck Bowl - Rib Ext. - Flat Flake Near Rim
- _____ 109. Super Ice B - N 8-Ruffle Stippled Good Luck Bowl - Rib Ext. - Polished Points
- _____ 110. **Few Known P - N Ruffled Good Luck Bowl - SMOOTH Ext. - Beautiful!**
- _____ 111. **Scarce M - 9" N Good Luck Plate - Scarce BW Ext. - Pink Highlights**
- _____ 112. M - N Ruffled Good Luck Bowl - Rib Ext. Pinks, Blues and Golds
- _____ 113. M - N PCE Stippled Good Luck Bowl - Rib Ext. - Thin Base - Breathtaking Pinks on this Rarity!
- _____ 114. Scarce B - N PCE Good Luck Bowl - Rib Ext. - Another Nice One
- _____ 115. B - N Ruffled Good Luck Bowl - Rib Ext. - Very Pretty Example
- _____ 116. **P - N Ruffled Good Luck Bowl - Scarce BW Ext. - Super Example**
- _____ 117. **Ultra Rare - Renniger Blue - Thin Base PCE Stippled Good Luck Bowl - Great Item**
- _____ 118. PO - 6½" Four Flowers Plates - Choice A or B: A - Satin, B - Radium
- _____ 119. Rare Electric B - N 10¼", 8-Ruffle Grape and Cable Collar Base Salad Bowl - BW Ext. - Flake On Ext. of Top Rim
- _____ 120. G - N 11" Grape and Cable 8-Ruffle Collar Base Salad Bowl - BW Ext.
- _____ 121. Electric B - N Grape and Gothic Arches Tumbler
- _____ 122. M - N Singing Birds Tumbler - Pinks, Yellows and Blues
- _____ 123. W - N Peacock at Fountain Tumbler - Super Pastel Irid - Base Nick
- _____ 124. G - N Acorn Burrs Tumbler - Greens, Golds and Pinks
- _____ 125. A - Fenton Butterfly and Fern Tumblers - Ground Bases - Choice A or B
- _____ 126. Electric B - Orange Tree Wine - Scarce Beauty
- _____ 127. Amber - N Stippled Grape and Cable Punch Cup - Light Handle - Very Nice Irid.
- _____ 128. M - N Fern Ruffled Compote - Daisy and Plume Ext. - Sliver Off Base
- _____ 129. W - Dugan Dahlia 4½" Rd. Ftd. Berry Bowl - Blue Highlights
- _____ 130. **Smoke - 5", 6-Ruffle Dome Base Imp. Tulip and Cane Berry Dishes - Choice A or B**
- _____ 131. **M - Scarce Imp. Tulip and Cane Wine Glass - 4¼" Tall**
- _____ 132. **M - Rare Imp. Tulip and Cane Claret - 4¼" Tall**
- _____ 133. M - Melon Ribbed (?) Salt and Pepper Shakers - Later Production
- _____ 134. G - Cambridge Small Buzz Saw Cruet - No Stopper
- _____ 135. **Red - 2-Row O.E. 5¼" Basket - Great Color but Has Base Chip**
- _____ 136. Gorgeous B - Orange Tree Punch Bowl and Base - Few Tip Chips
- _____ 137. **Scarce N Blue - 10¼" Tree Trunk Vase - Super Electric**
- _____ 138. **Rare N Blue - 8" Four Pillars Vase - Toe Chip - Still Outstanding**
- _____ 139. **Smoke - N 9¼" Thin Rib Vase - Streak of Lavender Slag In Base**
- _____ 140. **White Milk Glass - 6¼" Smooth Panels Vase - Pastel Iridized Overlay**
- _____ 141. **Rare Dark Aqua - 10" Imp. Ripple Vase - 2⅝" Base, 3¼" Top**
- _____ 142. G - Fenton Butterfly and Berry Butter Dish Base - Tip Chip on Rim
- _____ 143. **Yellow Vas. - Persian Medallion Bon Bon - Scarce and Nice**
- _____ 144. Amberina - Persian Medallion Bon Bon - Marie Chips
- _____ 145. Red - Persian Medallion Bon Bon - Nice Irid.
- _____ 146. **G - 9" N Spat Ftd. Grape and Cable Plate - Meander Ext. - Beautiful Hues**
- _____ 147. **Scarce N Blue - 9½" Peacock at Fountain Rd. Master Berry Bowl - Radium Electric**
- _____ 148. Scarce N Blue - 5" Peacock at Fountain Rd. Berry Bowl - Multi Electric
- _____ 149. Near Emerald G - 4½" Rd. N Springtime Berry Bowl - Great Little Rarity
- _____ 150. **Emerald G - N Grape and Cable Spooner - Fantastic**
- _____ 151. **P - N Grape and Cable Spooner - Fantastic Electric**
- _____ 152. Ice G - N Acorn Burrs Punch Bowl Base - Got the Top?
- _____ 153. Multi Electric Radium P - 8" Grapevine Lattice Plate - Reverse Tip Repair - Finest Example I've Seen
- _____ 154. G - Mlbg. 7½" Low Rd. Blackberry Wreath Bowl - 1¼" Off Table

- _____ 155. G - Mlbg. 9¼" ICS Blackberry Wreath Bowl - Super Satin! - Marie Flake
- _____ 156. G - Mlbg. 8¾", 6-Ruffle Trout and Fly Bowl - Pretty Satin Irid.
- _____ 157. M - Mlbg. 8¾", 3 in 1 Edge Trout and Fly Bowl - Satin w/Pinks and Blues
- _____ 158. **G - Sm. Fenton Vintage Single Epergne - Complete and Lovely**
- _____ 159. **M - Sm. Fenton Vintage Single Epergne - Complete and Lovely**
- _____ 160. **B - Sm. Fenton Vintage Single Epergne - Complete and Lovely**
- _____ 161. G - 9", 6-Ruffle Captive Rose Bowl
- _____ 162. G - 8¾" CRE Ribbon Tie Bowl - Rare Shape and Color
- _____ 163. **Dugan Blue - 8¾" Roundup Plate**
- _____ 164. G - 8½", 3 in 1 Edge Fenton Vintage Bowl
- _____ 165. G - 9" Fenton Thistle Ruffled Bowl
- _____ 166. M - 8¾", 3 in 1 Edge Fenton Thistle Bowl
- _____ 167. G - 9", 6-Ruffle Fenton Autumn Acorns Bowl - Beautiful Radium
- _____ 168. **A - 8½", 3 in 1 Edge Fenton Autumn Acorns Bowl - Scarce Beauty**
- _____ 169. B - 8½" ICS Collar Base Dragon and Lotus Bowl
- _____ 170. Rich M - 7½", 8-Ruffle Fenton Acorn Bowl
- _____ 171. B - 7½", 8-Ruffle Fenton Acorn Bowl - Sorry, Rim Chip
- _____ 172. Clam - 9½" Flat Imp. Star Medallion Plate - Loads of Color
- _____ 173. PO - Ball Ftd. 8½" CRE Dugan Cherries Bowl - Pattern Inside and Out
- _____ 174. M - Fenton Beaded Stars Compote - Unusual Four Ruffle Design
- _____ 175. **Rare A - 9" Sq. 8-Ruffle Feather Stitch Bowl - Pretty and Not Often Seen**
- _____ 176. **Scarce A - Fenton 7" Outstanding 6-Ruffle Pine Cone Bowl - Rich Satin Irid.**
- _____ 177. Pastel M - 9¼", 6-Ruffle Imp. Acanthus Bowl - Radium Electric
- _____ 178. **PO - 8½" Low Ruffled Dugan Round-Up Plate/Bowl? - OUTSTANDING**
- _____ 179. M - 6¼" Persian Garden Plate - BW Ext. - Great Example
- _____ 180. PO - 7¾" CRE Honeycomb and Beads Plate - Rare, Pretty Pastel
- _____ 181. **M - 6¼", 12-Sided Fenton Rd. Pine Cone Plate - Blue and Pink Irid.**
- _____ 182. M - 6½" Four Flowers Plate - BW Ext. - Light Opal Edge - Different!
- _____ 183. M - 7" Fenton Stippled Rays/Scale Band Plate - Top Notch Piece
- _____ 184. Fenton 1993 Connoisseur Collection - Ruby Stretch 10½" Rolled Rim Bowl
- _____ 185. Old Carnival Pieces Made Into Pendants - Choice of 3
- _____ 186. Old Carnival Pieces Made Into Pendants - Choice of 5
- _____ 187. **P - Fisherman's Mug Vt. with Estate Handle**
- _____ 188. P - N Singing Birds Mugs - Choice A, B or C
- _____ 189. **B - N Stippled Dandelion Mug - Multi Electric**
- _____ 190. **B - N Singing Birds Mug - Multi Electric**
- _____ 191. A - N Singing Birds Mug
- _____ 192. G - N Singing Birds Mug - Radium
- _____ 193. Rich M - N Singing Birds Mug
- _____ 194. **Amber - N Singing Birds Mug - Radium Beauty**
- _____ 195. P - Beaded Shell Mug - Great Example
- _____ 196. **Vas. - Orange Tree Mug - M. Overlay - 2½" Base, 3¾" Top**
- _____ 197. **Yellow Vas. Look - Orange Tree Mug - Glows Peach!! - 2½" Base, 3¾" Top**
- _____ 198. **Outstanding M - Orange Tree Mug - 3" Base, 3¾" Top**
- _____ 199. **Electric B - Orange Tree Mug - 3" Base, 3¾" Top**
- _____ 200. **Sapphire - Orange Tree Mug - 2½" Base, 3¾" Top - SUPER!**
- _____ 201. **Amber - Orange Tree Mug - 2½" Base, 3½" Top - PEACHY**
- _____ 202. P - Orange Tree Mug - 2½" Base, 3" Top - Electric and Dark Base
- _____ 203. **SUPER M - 9" N Hearts and Flowers Plate - Rib Ext.**
- _____ 204. Rich A - 10" N Wishbone Chop Plate - BW Ext.
- _____ 205. P - 9½" PCE N Wishbone Bowl - BW Ext. - Multi Electric Rarity
- _____ 206. **Stunning W - 9½" N PCE Wishbone Bowl - BW Ext. - SUPER BLUES!**
- _____ 207. **Super Clam - 8½" Ball Ftd. N Ruffled Wishbone Bowl - Electric Pastel**
- _____ 208. **BEAUTIFUL Ice B - Spat Ftd. 8¼" Ruffled N Sunflower Bowl**
- _____ 209. PO - 8¼" CRE Dugan Smooth Rays/Caroline Bowl - Pretty Piece
- _____ 210. M - Imp. Double Dutch 9" Rd. Ftd. Bowl
- _____ 211. M - Imp. Star Spray 6½" Rd. Bowl - Radium
- _____ 212. Smoke - Imp. Star Spray 6½" Rd. Bowl - Radium
- _____ 213. Rich M - 9¼", 6-Ruffle Ribbon Tie Bowl - Great Example
- _____ 214. M - Hattie Deep, Rd. 8" Bowl
- _____ 215. A - 8¼", 6-Ruffle Smooth Rays Bowl
- _____ 216. **Scarce M - 6" Two-Fruits Divided Bon Bon**
- _____ 217. B - 5¼" Ruffled CRE Fenton Fern Panels Hat
- _____ 218. **Amber - Fenton Stippled Rays Two-Handled Stemmed Compote - Scarce and Nice**
- _____ 219. **Florentine Ice G Vas. - 5¼", 6-Ruffle Stretch Hat-Shaped Bowl - Glows**
- _____ 220. Yellow Vas. - 10", 12-Panel Stretch Plate - Super and Glows Wildly
- _____ 221. **Stretch Jade Blue - 6¼" Rose Bowl w/Original BA Base**
- _____ 222. M - N 4¼" Rd. Acorn Burrs Berry Bowls - 4 x \$
- _____ 223. P - N 6", 6-Ruffle Fruits and Flowers Bowl
- _____ 224. M - Small Penny Piggy Banks - Choice A or B
- _____ 225. M - 4½" Rd. Lattice and Daisy Berry Bowl
- _____ 226. Clam - 9" Imp. Grape Low-Ruffled Plate - Fantastic Pastel Irid.
- _____ 227. **M - Fruit Band Decanter with Stopper - Radium**
- _____ 228. **Crystal - Flute 10¼" Vase - Starred Base, 3¾" - No Irid. - 20 Flutes**
- _____ 229. M - CRE Ruffled Scottish Thistle Compote
- _____ 230. M - Dugan Big Basketweave Handled Basket - 7" Tall
- _____ 231. **M - 10" Beauty Vase - Twig Feet - Great Dark Example**
- _____ 232. Rare G - Imp. Flute Toothpick Holder
- _____ 233. P - Imp. Flute Toothpick Holder - Multi Electric
- _____ 234. Dark M - Imp. Flute Toothpick Holder - Minor Chips
- _____ 235. B - Miniature Blackberry Compote
- _____ 236. **Lime Ice G - N 8¼", 8-Ruffle Super Hearts and Flowers Bowl - Rib Ext.**

- _____ 237. Electric P - Dugan 9" Low Ruffled Roundup Plate - Awesome!
- _____ 238. P - 10 1/4" Flat Wishbone and Spades Chop Plate - Superb Multi-Electric
- _____ 239. B - 7 1/4", 6-Ruffle Detroit 1910 Elks Bowl - Detailed and Super Colorful Piece
- _____ 240. W - Aurora Pearls 12" CRE 10-Ruffle Fantastic Bride's Bowl
- _____ 241. Great A - 10 1/4" Plume Panels Vase - Red and Blue Irid.
- _____ 242. Smoke - 7 1/4" Squatty Imp. Parlor Panels Vase - 3 3/8" Base, 6 3/8" Top
- _____ 243. Super P - Imp. 8", 8-Scallops Scroll Embossed Bowl - Plain Ext. - Electric!
- _____ 244. Teal - Rare Westmoreland Louisa Ftd. Nut Bowl
- _____ 245. Super Radium A - Mlbg. 8 3/4" Square Strawberry Wreath Bowl - WOW!
- _____ 246. Rare G - N 8 3/4" PCE Stippled Strawberry Bowl - Rib Ext. and Thin Base
- _____ 247. P - N 9" Grape and Cable Vt. Plate - Smooth Ext. - Super Electric
- _____ 248. Super P - Dugan Dome Base, 9" Low 10-Ruffle Dogwood Sprays Bowl
- _____ 249. M - Soda Gold 7" Large Spittoon
- _____ 250. Gorgeous Electric B - N 9" Peacocks Plate
- _____ 251. B - Stippled 9" N Peacocks Plate - Rib Ext. - A Scarce One, Too!
- _____ 252. Electric Rainbow Tiffany-Style Iridescence - P - 9" N Peacocks Plate - Rib Ext. - LOOKS LIKE A SUNRISE!!
- _____ 253. Ultra Pastel Marigold - N 9" Stippled Peacocks Plate - Rib Back
- _____ 254. W - 9 N Peacocks Plate - Scarce Plain Back
- _____ 255. P - 9" N Peacocks Plate - Rib Ext. - Multi Electric
- _____ 256. Clam? - 9" N Peacocks Plate - Rib Ext. - Radium Finish
- _____ 257. Rich Ice G - 9" N Peacocks Plate - Rib Ext. - Extra Nice
- _____ 258. Fabulous Pastel AO - Ruffled N Peacocks Bowl
- _____ 259. Emerald G - Ruffled N Peacocks Bowl
- _____ 260. Electric M - Rare Stippled N Ruffled Peacocks Bowl
- _____ 261. Rich M - N Ruffled Peacocks Bowl - Very Attractive
- _____ 262. A - N Ruffled Peacocks Bowl - Rib Ext. - Vibrant Birds
- _____ 263. P - Imp. Diamond Lace Water Pitcher - It's A 10+!
- _____ 264. P - ULTRA FIND Imp. Chatelaine Gorgeous Water Pitcher - Awesome Electric
- _____ 265. P - Imp. Chatelaine Tumblers - Choice A or B - Super!
- _____ 266. P - Radium N Oriental Poppy Tankard Pitcher - Stunning Example
- _____ 267. P - Radium N Oriental Poppy Tumblers - Choice A or B - Also Gorgeous
- _____ 268. RARE GREEN - N Peacock At Fountain Water Pitcher - Rarely Offered
- _____ 269. RARE GREEN - N Peacock At Fountain Tumblers - Choice A or B
- _____ 270. Rich M - N Peacock at Fountain Water Pitcher
- _____ 271. Rich M - N Peacock at Fountain Tumblers - Choice A or B
- _____ 272. Electric B - N Peacock at Fountain Water Pitcher - SUPER
- _____ 273. Electric B - N Peacock at Fountain Tumblers - Choice A or B
- _____ 274. P - N Peacock at Fountain Water Pitcher - Another Great Find
- _____ 274A. P - N Peacock at Fountain Tumblers - Choice of 2
- _____ 275. Frosty White - N Peacock at Fountain Water Pitcher - Loaded with Pinks and Blues
- _____ 276. Frosty White - N Peacock at Fountain Tumblers - Choice A or B
- _____ 277. P - N Singing Birds Water Pitcher - Multi Electric Example
- _____ 278. P - N Singing Birds Tumblers - Choice A or B - Multi Elec.
- _____ 279. Emerald Green - N Singing Birds Water Pitcher - WHEW!
- _____ 280. G - N Singing Birds Tumblers - Choice A or B
- _____ 281. Rich M - N Singing Birds Water Pitcher - Profusion of Pinks and Blues
- _____ 282. Rich M - N Singing Birds Tumblers - Choice A or B
- _____ 283. Radium M - Rare Quill Water Pitcher - This Is The One!
- _____ 284. Super Frosty W - Fenton Apple Tree CRE Water Pitcher - Few Known
- _____ 285. Rare G - Signed Near Cut - Inverted Strawberry Tankard Water Pitcher
- _____ 286. Radium G - Fenton Fluffy Peacock Water Pitcher - Great Example
- _____ 287. P - Beaded Shell Tumblers - Choice A, B or C
- _____ 288. P - N Grape and Cable 7 pc. Water Set - Above Average Set
- _____ 289. Scarce G - Imp. Lustre Rose 7 pc. Water Set - Ribbed Int. Glows
- _____ 290. A - 8" CRE Fenton Thistle Bowl - Scarce Edge Treatment
- _____ 291. A - 9", 6-Ruffle Fenton Thistle Bowl - Pretty Nice
- _____ 292. B - 9" Low 3 in 1 Edge Ribbon Tie Plate
- _____ 293. PO - 8 3/4" Low 10-Ruffle Apple Blossom Twigs Bowl
- _____ 294. B - 8 1/2", 3 in 1 Edge, Fenton Heart and Vine Bowl - Scarce Shape
- _____ 295. G - 8 1/2", 3 in 1 Edge, Fenton Heart and Vine Bowl
- _____ 296. B - 8" ICS Fenton Holly Bowl - Pretty Elec. Blue Highlights
- _____ 297. P - 8 3/4" PCE N Grape and Cable Bowl - Scarce BW Ext.
- _____ 298. Rare Green - 10 1/4" Sq. 8-Ruffle Ball Ftd. Stag and Holly Bowl - Outstanding Example
- _____ 299. Rare Smoky Blue - 11" Sq. 8-Ruffle Ball Ftd. Stag and Holly Bowl - Neat Color
- _____ 300. Pastel M - 10 1/4" Sq. 8-Ruffle Ball Ftd. Stag and Holly Bowl - Luscious Blues and Pinks
- _____ 301. Rare G - 9", 8-Ruffle Deep Ball Ftd. Stag and Holly Nut or Fruit Bowl
- _____ 302. Purple - 9 1/4", 8-Ruffle Deep Ball Ftd. Stag and Holly Nut or Fruit Bowl - Super
- _____ 303. Soft Blue - 9 1/4", 8-Ruffle Deep Ball Ftd. Stag and Holly Nut or Fruit Bowl - Electric Irid.
- _____ 304. M - Giant Ball Ftd. 7" Stag and Holly Rose Bowl - Top Quality
- _____ 304A. Outstanding W - 11 1/4", 6-Ruffle Persian Garden Fruit Bowl and Base
- _____ 305. Rare G - 9 1/2" N Rose Show Plate - Blues, Purples, Greens and Yellows WOW!

- _____ 306. Deep B - 9" N Rose Show Plate - Multi Electric Beauty
- _____ 307. M - 9½" N Flat Rose Show Plate - Yellows and Golds
- _____ **308. Outstanding Find - A - 6" Ruffled Central Shoe Store St Louis Advertising Bowl**
- _____ 309. Florentine Vas. - Pastel Swan Salt - Glows Great
- _____ 310. Pink - Contemporary - L.I.G. Signed Pastel Swan Salt
- _____ 311. Ice B - Contemporary - L.I.G. Signed Pastel Swan Salt
- _____ 312. W - Contemporary - I.G. Signed Pastel Swan Salt
- _____ 313. Contemporary Scarcity W - Signed N Grape and Cable Tumbler
- _____ 314. Red Joe St. Clair Contemporary Grape and Cable Tumbler
- _____ 315. Rare, Old, Frosty W - Blueberry Tumbler
- _____ 316. A - Fenton Butterfly and Berry Tumbler - Rare, But Lg. Base Chip
- _____ 317. Scarce M - Enameled Silver Queen Tumbler - Beautiful
- _____ 318. B - Enameled Ground Cherries Tumbler - Nice Example
- _____ 319. B - Enameled Spring Festival Tumbler - Also Pretty
- _____ **320. M - Silver Band Tumbler - One of Six Listed**
- _____ 321. B - Enameled Forget-Me-Not Banded Tumbler
- _____ **322. B - Enameled Reverse Banded Iris Band Tumbler**
- _____ 323. B - Iris and Prism Band Tumbler - Enameled
- _____ 324. Amber? - Enameled Iris and Prism Band Tumbler
- _____ 325. G - Enameled Iris and Prism Band Tumbler - Rare Find
- _____ 326. M - Enameled Iris and Prism Band Tumbler
- _____ 327. Super B - Enameled Daisy and Little Flowers Tumbler
- _____ **328. Rare Glowing IG - Enameled Shasta Daisy Tumbler**
- _____ **329. B - N Flat 9" Stippled Grape and Cable Vt. Plate - Rib Ext. - A Dandy**
- _____ **330. AO - 8¼" N PCE Stippled Grape and Cable Vt. Bowl - Rib Ext. - Butterscotch Overlay**
- _____ **331. Fenton AO - 8¼", 3 in 1 Vintage Collar Base Bowl - Great Item**
- _____ 332. Fenton AO - 6½" Rd. 12-Scallops Vintage Collar Base Bowl - Unusual Size
- _____ **333. Marigold Opal - 8½", 3 in 1 Collar Base Peacock and Grape Bowl - Great**
- _____ 334. Contemporary - AO - ICGA 1981 Frolicking Bears Cuspidor
- _____ 335. Contemporary - IB - Westmoreland Checkerboard Water Pitcher
- _____ 336. Contemporary - Cobalt B - Cactus Tumbler
- _____ 337. Contemporary - Cobalt B - 8½" Ped. Base Elephant Candle Holder / Console Bowl
- _____ 338. M - Imp. Double Scroll Three Pc. Console Set - Complete
- _____ 339. M - 12½" Lg. Flute Console Bowl
- _____ 340. Contemporary - Red - 14" Octagon Vt.? Sandwich Tray - Huge!!
- _____ 341. B - Orange Tree Powder Jar - No Lid
- _____ **342. PO - 6¼", 6-Ruffle CRE Folding Fan Compote - Great Example**
- _____ **343. W - Constellation 6-Ruffle Compote - Multi Pastel Electric**

- _____ **344. PO - 6", 6-Ruffle Wishbone and Spades Berry Bowl - 1½" Opal**
- _____ 345. P - N Beaded Cable 7¼", 6-Ruffle Candy Dish - Smooth Ray Int.
- _____ 346. P - Grape and Cable Cologne Bottle with Stopper
- _____ 347. PO - Dugan 6½" CRE Tri-Corner Beaded Panels Compote - Almost 2" of Opal
- _____ 348. PO - 9" Dugan Caroline/Smooth Rays Hand Grip Bowl
- _____ 349. Radium M - N Peacock at Fountain Sugar Bowl with Lid - Lid Chipped
- _____ 350. M - Peacock at Fountain Butter Dish Lid Only

Approximately 35 Uncatalogued Carnival Pieces Sold at End of Auction.

THANK YOU FOR ATTENDING TODAY

SPECIAL NOTE:

CALENDAR OF AUCTION EVENTS

Saturday, October 20, 2001
Air Capital Convention - Wichita, Kansas
BEST EVER

Saturday, November 10, 2001
Carnival Glass at Boonville Center

Booking NOW for
11th Annual New Year's
Extravaganza
Saturday, January 5, 2002

For Free Color Catalogs & Information Write:

Mickey Reichel

516 Third Street, Boonville, MO 65233-1536

or Call: 660-882-5292 days or

660-882-5283 evenings

E-mail: mreichel@undata.com

Website: www.yourauction page.com/reichel

Call today for 2002 bookings.

(1 piece or entire collection!!)

MICKEY REICHEL
ANTIQUE & AUCTION, L.C.
 516 THIRD STREET
 BOONVILLE, MO 65233-1536

PRESORTED
 FIRST CLASS MAIL
 US POSTAGE PAID
 SEDALIA, MO
 PERMIT 217

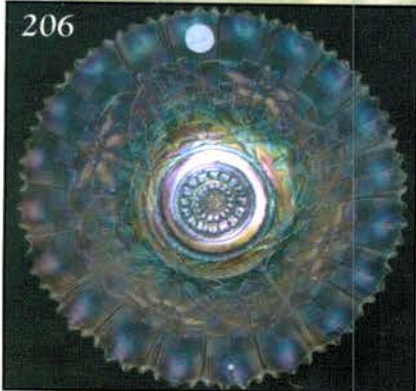
RETURN SERVICE REQUESTED

FIRST CLASS MAIL
 SPECIAL INVITATION TO:



9*18*****MIXED AADC 650

LEE MARKLEY
 PO BOX 306
 MENTONE, IN 46539-0306



Top: 317, 318, 319, 320; Middle: 322, 323,
 324, 321; Bottom: 325, 326, 327, 328