

CARNIVAL GLASS AUCTION

Saturday, August 18, 2001 9:00 a.m., C.D.T.

300



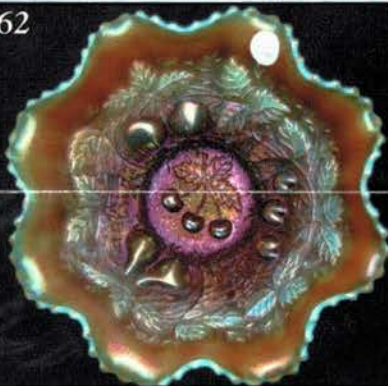
299



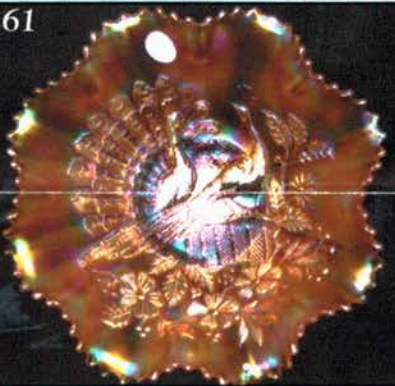
270



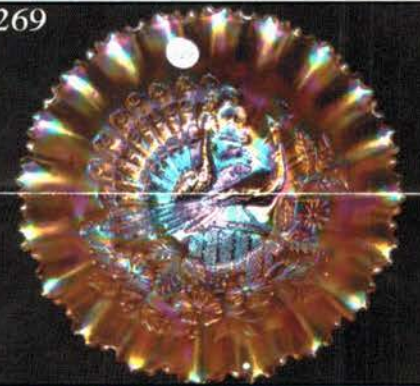
262



261



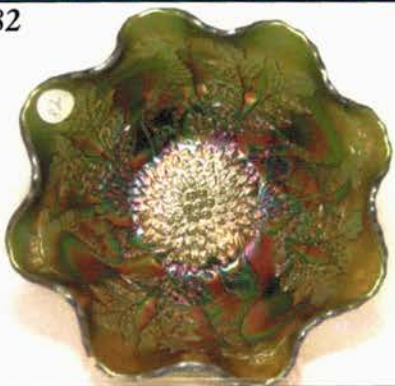
269



252



82



272



Held Inside the Mickey Reichel Auction Center, Boonville, Missouri

Office: 660-882-5292 • Home: 660-882-5283

Direct e-mail: mreichel@undata.com

NEW WEB SITE ON: <http://www.yourauctionpage.com/reichel>



Held Inside the Mickey Reichel Auction Center

1 Mile North of I-70 on Hwy. 5, Exit 101, Boonville, Missouri • 20 Miles West of Columbia, MO on I-70

Preview Friday 12 p.m. - 6 p.m. and 7:30 a.m. - 9:00 a.m. Day of Auction



TERMS: Cash or Good Check, VISA and MasterCard accepted.



3% Handling Fee on all purchases except for payment of cash or check. Proper I.D. required.

WEBSITE: www.yourauctionpage.com/reichel

ABSENTEE BID POLICY:

WRITE IN BIDS: If you are unable to attend the auction, we will be happy to accept absentee bids which must be received by THURSDAY, AUGUST 16, 2001. Don't Delay. E-Mail: mreichel@undata.com

FOR AUCTION PRICE RESULTS: Send \$3.00 and Large S.A.S.E. to 516 Third Street, Boonville, MO 65233-1536

PLEASE NOTE: There is a **\$5 handling charge for each successful bid which will be added to the selling price** for all write-in bids. This is in addition to the cost of postage, insurance and packing. Your write-in bid will be entered just as if you are present and bidding. **Successful bidders will be notified in 1 to 3 days by the auctioneer (so be sure to include your phone number).** Direct mail bids to Auctioneer Mickey Reichel, 516 Third Street, Boonville, MO 65233-1536. Terms: Cash or Check accepted with proper I.D. and Social Security Number and References. Announcements made day of the auction supercede all printed material. Not Responsible for Accidents or Sold Items.

No return on any items once they leave the Auction Center (No Exceptions).****

Call for additional information: 660-882-5292 days or 660-882-5283 evenings before 9:00 p.m.

FAX: 660-882-5292 (evening hours start FAX transmission after beep)

MAIL BIDS: Items are bid on in perfect condition with average or above iridescence OR as listed in the brochures. Bids will not be carried out when damage on an item has been found during the auction.

PEOPLE PRESENT AT AUCTION ARE RESPONSIBLE FOR FINDING ANY PINHEADS, WEAR, SPOTTINESS, MANUFACTURER'S DEFECTS OR ANY OTHER MINOR FLAWS, ETC. *****

NOTE: Read each line, as we have accentuated the type of no particular piece, all are special.

Make Reservations EARLY at one of these local motels:

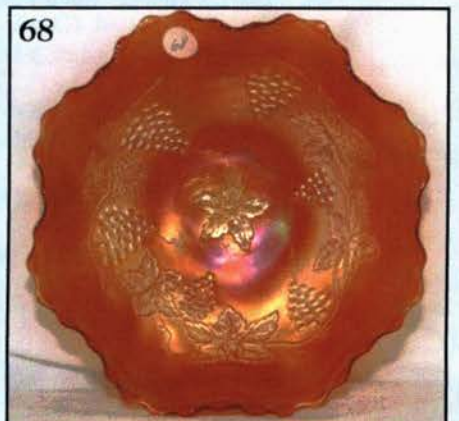
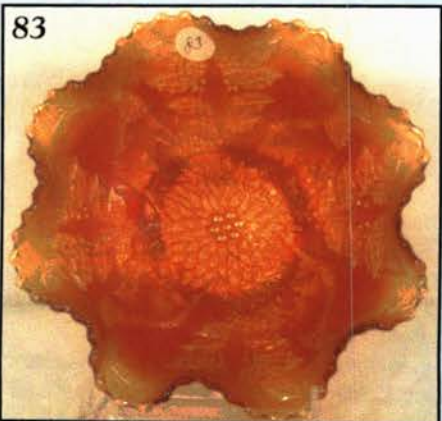
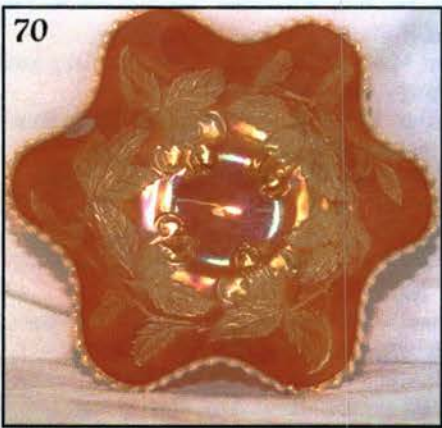
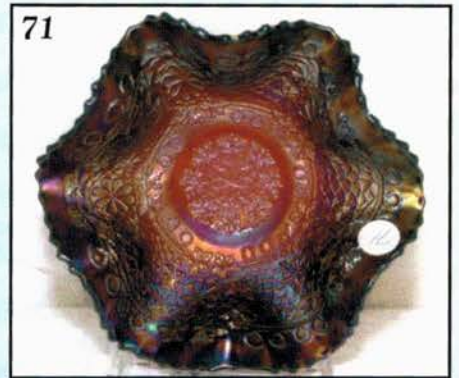
Days Inn: 660-882-8624 • Comfort Inn: 660-882-5317 • Super 8: 660-882-2900

Auction Consists of Rarity, Great Irid. and Variety

THANK YOU FOR ATTENDING TODAY

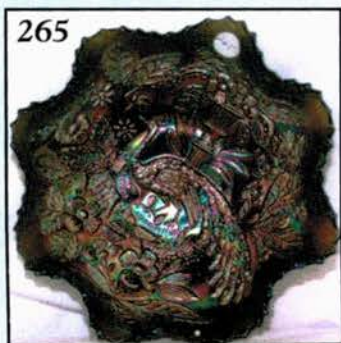
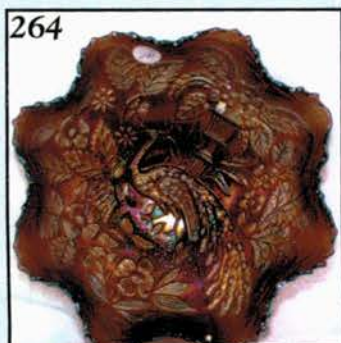
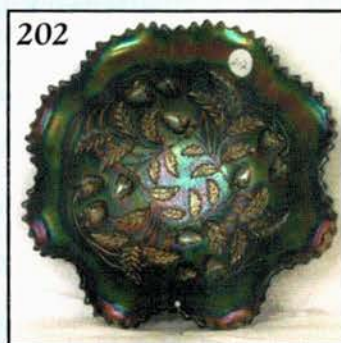
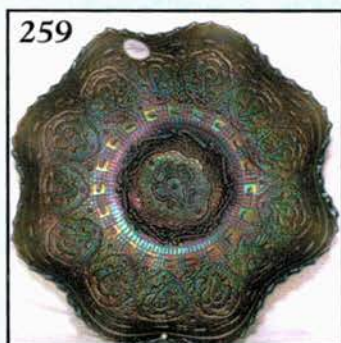
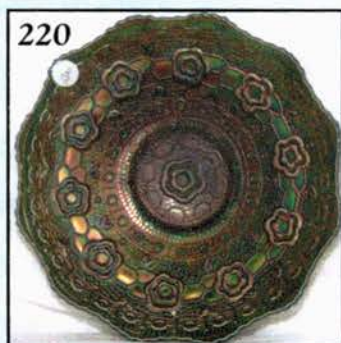
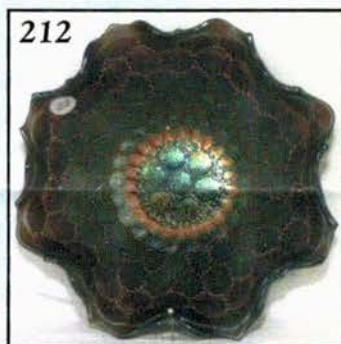
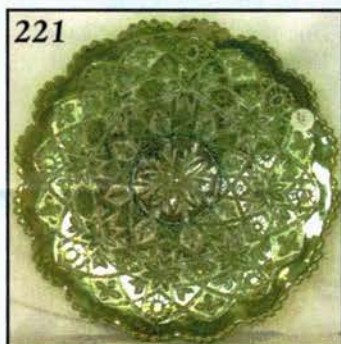
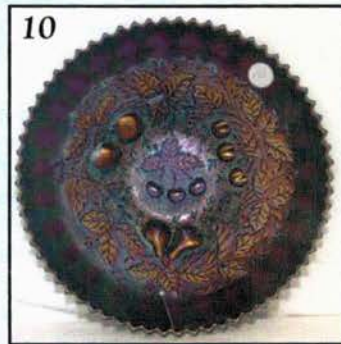
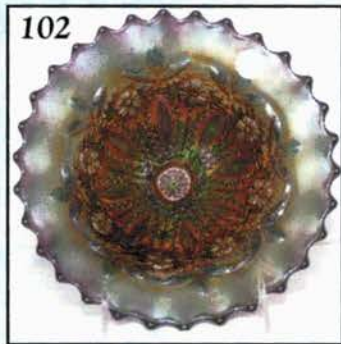
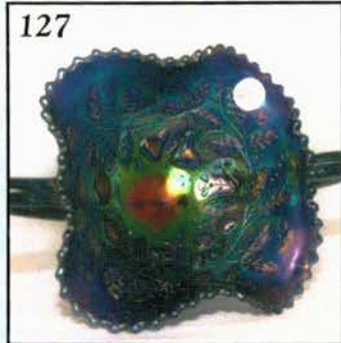
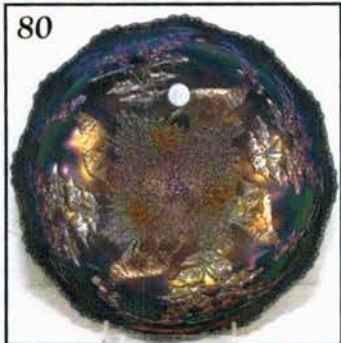
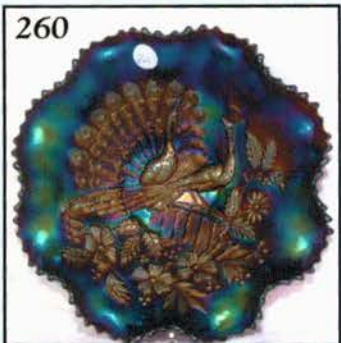
- | | | | |
|-------|--|-------|---|
| _____ | 1. M - Windflower Tri-Corner Nappy | _____ | 13. B - Rooster Hatpin |
| _____ | 2. M - 7¼", 8-Ruffle Imp. Star and File Bowl | _____ | 14. Teal - Rooster Hatpin |
| _____ | 3. P - N David and Bows Ruffled Bowl | _____ | 15. BA - Big Butterfly Hatpin |
| _____ | 4. Lav. - Louisa Rose Bowl - Scarce Color | _____ | 16. White Opal - 12" Diamond Point Columns Vase - Non-Irid. |
| _____ | 5. P - Louisa Rose Bowl - Silver Irid. | _____ | 17. M - 10" Imp. Beaded Bullseye Vase - Base Chip |
| _____ | 6. M - 7", 8-Ruffle Apple Blossoms Bowl - Extra Nice | _____ | 18. M - 10" Imp. Ripple Vase - Radium Beauty |
| _____ | 7. M - 6", 6-Ruffle Cherry Chain Bowl | _____ | 19. M - 10¼" Dugan Dinkins Rib Vase - Never Sold One Before! |
| _____ | 8. M - 5¼" ICS Cherry Chain Bowl | _____ | 20. W - 9¼" Rustic Vase - Lots Of Color |
| _____ | 9. Teal - 7", 8-Ruffle Imp. Heavy Grape Bowl - Glows! | _____ | 21. M - 6⅞" Imp. Ripple Vase - Scarce Size - Great Color |
| _____ | 10. B - Stippled 9" N Three-Fruits Ribbed Back Plate - Scarce and Nice | _____ | 22. M - Golden Wedding Pint Whiskey Bottle with Lid and Labels |
| _____ | 11. BA - Dragonflies Hatpin | _____ | 23. M - Golden Wedding ½" Pint Whiskey Bottle with Lid and Labels |
| _____ | 12. BA - Six Plums Hatpin | _____ | 24. M - Golden Wedding ¼" Pint Whiskey Bottle with Lid and Labels |
| _____ | 12A. BA - Top Of The Morning Hatpin | | |

25. **M - Dahlia Master Berry Bowls and Five Small Bowls - Scarce & Nice**
26. M - 8 1/4" Rd. Butterfly and Berry Master Berry Bowl
27. M - Butterfly and Berry Butter Dish with Lid - Rich Color
28. B - 5" Rd. Butterfly and Berry Bowls - 2 x \$
29. M - Butterfly and Berry Tumblers - 4 x \$
30. **Great A - Mlbg. 9 1/4", 6-Ruffle Seaweed Bowl - A Beauty**
31. B - 9" Collar Base, 8-Ruffle Dragon and Lotus Bowl - Multi Electric
32. B - 9" Collar Base, Sq. 8-Ruffle Peacock and Grape Bowl - Great Electric Highlights
33. 7 1/4" N Ruffled Fruits and Flowers Bowl - Scarce
34. M - Garden Path Vt. 8 1/4", 10-Ruffle Bowl - Soda Gold Ext.
35. Rich M - Hobnail Soda Gold Spittoon - Great Example
36. **Scarce B - 9", 8-Ruffle Plaid Bowl**
37. **Elec. B - N Fruits and Flowers Stemmed Bon Bon**
38. P - 9 1/4", 8-Ruffle N Wild Strawberry Bowl
39. M - 9 1/2", 8-Ruffle Lg. Mikado - Cherries Compote
40. **A - 8 1/4", 8-Ruffle Ftd. N Wishbone Bowl - Great Multi Color Example**
41. M - 7 1/2", 8-Ruffle Ftd. N Wishbone Bowl - Nick Dark Example
42. M - 8 1/4", Sq. 8-Ruffle Chrysanthemum/Windmills Bowl - Rare Collar Base Example
43. P - Fisherman's Mug - Silver Radium Finish
44. **Great M - J.I.P. Ftd. Horse Medallion Bowl**
45. Unusual B - 9 1/2" Fenton Trunk Center Orange Tree Plate - Non Irid. Face - Great Effect!
46. **Deep, Rich Amber - Fenton Strawberry Bon Bon - Scarce with Great Color**
47. B - Fenton Strawberry Bon Bon - Scarce with Great Color
48. M - Fenton Strawberry Bon Bon - Scarce with Great Color
49. M - Imp. Grape Decanter with 5 Wines
50. G - 6 1/4" Rd. Near Cut Inverted Strawberry Bowl - Radium and Nice
51. **Pastel M - 9" Three-Fruits Plate - BW Ext. - Rich Yellows, Greens, Pinks**
52. M - 9", 8-Ruffle N Nippon Bowl - BW Ext. - Multi Color Dandy
53. **Scarce Clam - 9" Spat. Ftd. Ruffled N Sunflower Bowl - Pastel Irid. Galore**
54. M - Stork and Rushes 2-Sides Up Whimsey Vase from Tumbler
55. **Rare Clam - N Greek Key Tumbler**
56. P - N Greek Key Tumbler - Scarce and Above Average
57. **RARE B - Ribbed Int. N Grape Arbor Tumbler - Electric**
58. **M - N Waterlily and Cattails Tumbler - Nice Example**
59. M - Fenton Waterlily and Cattails Tumbler - Extra Nice
60. Outstanding Example of Smoke Soda Gold Tumbler
61. **Great B - Enameled Ground Cherries Tumbler - Paneled Int.**
62. M - Bouquet Tumbler
63. **Fantastic P - Heavy Iris Tumbler - Electric**
64. Radium M - Imp. Fieldflower Tumbler - Really Pretty
65. Great B - Butterfly and Berry Tumbler - Great Detail
66. B - Blueberry Tumbler - Scarce Pattern
67. **Rare G - Dugan Dome Ftd., 8-Ruffle Vintage Grape Bowl - Few Known**
68. **Near Pumpkin M - 9", 8-Ruffle Scarce Dugan Vintage Grape Dome-Base Bowl**
69. PO - Dome Base, 8 1/4", Floral Enamel Decorated Stippled Petals Bowl
70. **PO - 9 1/4", 8-Ruffle Scarce Collar Base Dugan Cherries Bowl - Jeweled Heart Ext. - Great Opal**
71. **Rare RED - 7 1/4", 6-Ruffle Leaf Chain Bowl**
72. **Red - Ron Hansen 49'er Ruffled Top Whimsey from Tumbler**
73. **Red - Painted Rooster Hatpin - Scarce**
74. B - Painted Rooster Hatpin - Scarce
75. Yellow Amber - Painted Rooster Hatpin - Scarce
76. Plain W - Red Comb Rooster Hatpin
77. Red - Plain Rooster Hatpin
78. Teal - Plain Rooster Hatpin
79. **BA - Hard to Find Basketflower Hatpin**
80. **Fantastic Radium B - 10 1/4" ICS Scalloped Ball Ftd. Stag and Holly Bowl**
81. M - Ball Ftd. 10 1/4" Sq. 8-Ruffle Stag and Holly Bowl - Very, Very Nice
82. **Fenton's Emerald G - Spat Ftd. 7 1/4", 8-Ruffle Stag and Holly Bowl - Just Outstanding**
83. **Pumpkin M - Spat. Ftd. 7 1/4", 8-Ruffle Stag and Holly Bowl - Also Outstanding**
84. **G - 8" Spat. Ftd. Low ICS Stag and Holly Bowl - Rare Shape and Color**
85. P - N 9" Diamond Point Vase
86. M - 10" N Tree Trunk Vase
87. Neat P - 7 1/4" Imp. Ripple Vase - Unusual Size
88. **Amber - 8" Imp. Ripple Vase - 3" Base - 5" Ruffled Top**
89. **Teal Green - 8 1/2" Imp. Ripple Vase - 2 7/8" Base, 4 1/2" Top w/Spout - Base Glows**
90. **P - 12 1/2" Morning Glory Funeral Vase - Double-Starred Base - 4 7/8" Base, 8 7/8" Flared Top**
91. Rare Persian Blue Opal - Westmoreland 8 3/4" JIP Vase
92. Also Rare Moonstone - Westmoreland 9 1/4" JIP Vase
93. Scarce Yellow Amber - Westmoreland 9 1/2" JIP Vase
94. Teal - 8" Westmoreland Corinth Vase
95. A - 7 1/4" Westmoreland Concave Flute Vase - Starred Base
96. A - 9 1/8" Westmoreland Concave Flute Vase - Starred Base
97. A - 9 1/2" Spiralex Vase - Scarce and Beautiful
98. M - Fenton Orange Tree Hatpin Holder - Clear Feet
99. **Lav - 7" Goofus Glass Palm Beach Small Banana Boat Whimsey**
100. **G - Mlbg. Hobstar and Feather Giant Rose Bowl - Fantastic Color - Factory Interior Heat Flash**



- _____ 101. **M - Fenton #923 Seven Pc. Nut Set - Great Miniature Set**
- _____ 102. P - N 8" Rd., Ftd. Lovely Pattern Bowl - Leaf and Beads Ext. - Rare Find
- _____ 103. Florentine Ice Green Vas. - Pastel Swan Salt - Glows Wildly
- _____ 104. Pink Pastel Swan Salt
- _____ 105. **B - 2 7/8" Kittens Spooner, Toothpick or Vase - Scarce Blue Color**
- _____ 106. M - 6-Ruffle Kittens Bowl
- _____ 107. M - 4-Sides Up Kittens Bowl - Extra Nice Color
- _____ 108. Extra Nice, Well Matched M - N Grape and Cable, 7-pc. Standard Water Set
- _____ 109. Clam - 8 1/4" ICS Leaf Chain Bowl - Neat Shape and Color
- _____ 110. B - 8 1/2", 3 in 1 Edge, Fenton Heart and Vine Bowl - Scarce Shape
- _____ 111. G - 10", 3 in 1 Edge, Fenton Vintage Grape Bowl - Neat Shape
- _____ 112. B - Miniature Blackberry Compote
- _____ 113. M - 7 1/4", 6-Ruffle Peacock and Dahlia Bowl - Lovely Piece
- _____ 114. M - 6", 6-Ruffle Scarce Collar Base Waterlily Bowl
- _____ 115. M - 5 1/4" Ball Ftd. 6-Ruffle Waterlily Bowl - Very Pretty Irid.
- _____ 116. G - 6", 6-Ruffle Fenton Pine Cone Bowl - Beautiful Bowl - WOW!
- _____ 117. B - 6", 6-Ruffle Fenton Pine Cone Bowl - Super Color, Too
- _____ 118. M - 6", 6-Ruffle N Fruits and Flowers Bowl - BW Ext.
- _____ 119. M - 6", 6-Ruffle N Grape and Cable Bowl - BW Ext.
- _____ 120. P - 5 1/4", 6-Ruffle Wishbone and Spades Bowl - Plain Ext.
- _____ 121. P - 6" Scarce 8-Ruffle Dugan Cherries Bowl - Jeweled Heart Ext.
- _____ 122. B - 5 1/4" Fenton ICS Vintage Grape Bowl
- _____ 123. P - N 5 1/2" Peacock and Urn ICS Bowl
- _____ 124. G - 9", 6-Ruffle Fenton Leaf Chain Bowl - Lt. Silver Irid.
- _____ 125. **M - Dome Base 10-Ruffle Dugan Weeping Cherries Bowl - Very Scarce**
- _____ 126. B - 8 1/4" Low-Ruffled Dugan Roundup Plate - Scarce Dugan Blue
- _____ 127. **Fantastic Elec B - N Fruits and Flowers Stemmed Bon Bon**
- _____ 128. M - Imp. Small Propeller Compote
- _____ 129. G - Wreath of Roses Stemmed Bon Bon - So Detailed!
- _____ 130. **Tangerine Stretch - #923 Mayonnaise and Irid. Ladle - Plate 280**
- _____ 131. M - Flowering Dill, JIP, CRE Hat - Great Strike and Color
- _____ 132. Nice M - Garland Rose Bowl
- _____ 133. B - Birds and Cherries Four-Sides Up Bon Bon - Extra Fine Detail
- _____ 134. B - 5" Rd. Little Flowers Bowl - 2 x \$
- _____ 135. Rich M - Stream of Hearts, 6-Ruffle Compote - Persian Medallion Ext.
- _____ 136. Large G - Persian Medallion Ruffled Compote - Rare - Chip On Top Of Base Rim
- _____ 137. Large B - Persian Medallion Ruffled Compote
- _____ 138. B - 5" Rd. Persian Medallion Berry Bowl
- _____ 139. G - 5 1/4" Rd. Persian Medallion Berry Bowl - Scarce Color
- _____ 140. B - 5 1/2" ICS Persian Medallion Berry Bowl
- _____ 141. G - 7", 6-Ruffle Persian Medallion Bowl
- _____ 142. B - 5 7/8", 6-Ruffle Persian Medallion Bowl
- _____ 143. M - 6 1/4" Persian Medallion Plate - Pl. Ext. - Very Pretty
- _____ 144. M - 6" Persian Medallion Plate - 4-Sides Up - Choice A or B
- _____ 145. Outstanding Red - Stretch Pedestal Bowl - 5-Ruffle
- _____ 146. P - N 9" Strawberry Plate - Plain Ext.
- _____ 147. M - N 9" Strawberry Plate - Plain Ext.
- _____ 148. G - Captive Rose 9 1/4" Plate - Cracked, But Beautiful
- _____ 149. M - 10 1/2" Ball Ftd. 8-Ruffle Sq. Stag and Holly Bowl
- _____ 150. **G - N Squatty 7 1/4" Thin Rib RARE Jester's Cap Vase**
- _____ 151. P - Dugan Big Basketweave Squatty Vase or Persian Garden Fruit Bowl Base
- _____ 152. **Scarce Teal - Imp. Tiger Lily Water Pitcher - Base Glows**
- _____ 153. Scarce Teal - Imp. Tiger Lily Tumblers - Choice A, B, C, D, E, F
- _____ 154. Non Irid. Dugan Green Vas. - Woodpecker Wall Pocket Vase - 1920's - Glows
- _____ 155. Deep P - N Peacock at the Fountain Lg. Ftd. Fruit Bowl - Great, One Ear Rprd.
- _____ 156. M - Fenton Enameled Magnolia and Drape Water Pitcher
- _____ 157. Rich M - Vineyard Water Pitcher
- _____ 158. **B - Ftd. Orange Tree Water Pitcher - Best I've Seen - Near Perfect Feet**
- _____ 159. B - Ftd. Orange Tree Tumblers - Choice A, B, C
- _____ 160. Soft M - N Acorn Burrs Tumblers - Choice A, B, C, D
- _____ 161. P - N Dandelion Tumbler - Above Average
- _____ 162. G - N Acorn Burrs Punch Cup
- _____ 163. G - N Acorn Burrs Punch Bowl Base
- _____ 164. P - N Singing Birds Mug - Multi Electric
- _____ 165. Rich M - N Singing Birds Mug
- _____ 166. Pretty B - Orange Tree Mug - 3 1/2" Top, 3" Base
- _____ 167. M - Orange Tree Mug - 3 1/2" Top, 3" Base
- _____ 168. Smoke - 9", 8-Ruffle Imp. Diamond Ring Bowl - Radium Beauty
- _____ 169. P - 9 1/4", 8-Ruffle Imp. Diamond Lace Bowl
- _____ 170. **Amber - 9" Imp. Open Rose Plate - Flat and Lovely**
- _____ 171. **Multi-Electric M - 9" Imp. Open Rose Plate**
- _____ 172. Amber - 9", 8-Ruffle Imp. Pansy Bowl - Electric Purple Center
- _____ 173. Helios G - 9", 8-Ruffle Imp. Pansy Bowl
- _____ 174. **Yellow Amber - Imp. Logansberry Vase - Super Example**
- _____ 175. M - 9 1/2" Imp. Ripple Vase - Great One
- _____ 176. M - 12 1/2" Imp. Beaded Bullseye Vase - Multi Electric
- _____ 177. M - Imp. Rococo Vase - Twisted Top
- _____ 178. Contemporary - Amber Imp. Pansy Pickle Dish
- _____ 179. Contemporary - Smoke 10 1/2" Imp. Homestead Chop Plate

- _____ 180. Contemporary - White 10½" Chrysanthemum Chop Plate
- _____ 181. M - 8½" Scarce 10-Ruffle Windflower Bowl
- _____ 182. M - Radium Bouquet Tumbler - Rim Pinheads
- _____ 183. M - Dugan Floral and Grape Tumbler
- _____ 184. M - Footed Orange Tree Tumbler - Foot Chips
- _____ 185. M - Sailboats Wine Glass - Clear Base
- _____ 186. M - Orange Tree Whimsey Compote From Wine Glass - Scarce and Nice
- _____ 187. M - Plain Int. Buttermilk Goblet
- _____ **188. Scarce G - Fenton Peacock at Urn Ruffled Compote**
- _____ 189. M - 7¼" Sq. 8-Ruffle Fenton Grape and Cable Bowl
- _____ 190. B - Orange Tree Covered Powder Dish - Above Average
- _____ **191. Multi Electric B - N Bushel Basket - Very Nice**
- _____ **192. W - N Fine Cut and Roses Rose Bowl - Fancy Int. Super B**
- _____ 193. P - 9½" Westmoreland Corinth Vase
- _____ 194. B - 10" Fenton Fine Rib Vase - Good Color and Irid.
- _____ 195. Great B - 7¼" Fenton Paneled Diamonds and Bows Vase
- _____ 196. Alaskan Effect G - 8" N Fine Rib Vase
- _____ 197. A - 9¼" Diamond Point N Vase - 5" Top
- _____ **198. IG - Corn Vase - N Flowered Base - Super Example**
- _____ 199. Scarce G - 10", 8-Ruffle N Grape and Cable Collar Base Bowl
- _____ 200. P - 11" N 8-Ruffle Collar Base Grape and Cable Bowl
- _____ **201. RARE BLUE - N Grape & Cable Sm. Punch Bowl and Base - Multi Electric**
- _____ **202. Deep P - N 9", 8-Ruffle Stippled Strawberry Bowl - Gorgeous**
- _____ **203. A - N PCE Strawberry Bowl - BW Ext. - Scarce & Beautiful**
- _____ **204. Above Average M - N 8-Ruffle, 9" Strawberry Bowl - BW Ext.**
- _____ **205. Neat P - PCE, N Three-Fruits Bowl - Plain Ext. - Rainbow Irid.**
- _____ 206. Extra Nice G - N 9" Three-Fruits Plate - BW Ext. - Lots of Greens & Blues
- _____ 207. Non-Irid. Custard - 7½" Prayer Rug Plate
- _____ 208. G - 6½", 6-Ruffle Fenton Stippled Rays Bowl - Little Beauty
- _____ 209. B - Fenton Vintage Fernery Bowl - Multi Electric Highlights
- _____ **210. B - 8½", 6-Ruffle Concord Bowl - Very Scarce Color**
- _____ 211. A - 8½", 3 in 1, Fenton Vintage Bowl - Scarce Shape
- _____ **212. Outstanding B - 9", 8-Ruffle Fenton Feather Stitch Bowl - Electric Center**
- _____ **213. G - 10", 3 in 1 Fenton Little Flowers - Scarce Shape and Color**
- _____ 214. PO - 6¼" Petal and Fan Ruffled Plate - Jeweled Heart Ext.
- _____ 215. PO - 6½" Four Flowers Plate - BW Ext.
- _____ **216. M - 9", 6-Ruffle Orange Tree Bowl - Outstanding Pastel Irid.**
- _____ 217. M - Open Rose Creamer
- _____ **218. Lav. - Mlbg. 7¼" Hanging Cherries ICS Bowl - Multi Satin Irid.**
- _____ **219. M - 7" ICS Fenton Lions Bowl - Grrreat Detail**
- _____ **220. B - 9¼" Captive Rose Plate - Great Green and Blue Irid.**
- _____ **221. Unusual G - Imp. 10½" Hattie Chop Plate - Tries to Glow**
- _____ 222. Contemporary M - Stork and Rushes 4½" Rd. Berry Bowls - 6 x \$
- _____ 223. M - Daisy and Lattice, 7 pc. Tankard Water Set - Extra Nice
- _____ 224. Dark M - Twins Two-Piece Fruit Bowl Set
- _____ 225. Lt. M - Twins Two-Piece Fruit Bowl Set
- _____ 226. M - Fashion Water Pitcher - Blue and Pink Highlights
- _____ 227. Rich M - Octagon Wine Decanter - 6 Wines - 7 pc. Set
- _____ 228. M - Rd. Butterfly and Berry Master Bowl and 5 Sm. Berry Bowl.
- _____ 229. M - Fashion 8 Pc. Punch Set - Bowl, Base, Six Cups - Beautiful Set
- _____ 230. M - Question Marks Pedestal Ft. Bon Bon
- _____ 231. Radium M - 9½", 6-Ruffle Cosmos Vt. Bowl
- _____ 232. P - N Fruits and Flowers Stemmed Bon Bon
- _____ 233. M - Fenton 6-Ruffle Peacock at Urn Compotes - Choice A or B
- _____ 234. Beautiful G - 9", 8-Ruffle Fenton Holly Bowl
- _____ 235. M - 9", 8-Ruffle Fenton Holly Bowl
- _____ **236. Rare G - Persian Medallion Punch Cup - Wreath of Roses Ext.**
- _____ **237. Rare A - Persian Medallion Punch Cup - Wreath of Roses Ext.**
- _____ **238. Scarce M - Persian Medallion Punch Cup - Wreath of Roses Ext. - Choice A, B, C, D**
- _____ 239. B - Fenton Vintage Grape Punch Cup - Wreath of Roses Ext. - 2 x \$
- _____ 240. P - N Acorn Burrs Punch Cups - 3 x \$ - Silver Irid.
- _____ 241. M - 6" Persian Medallion Plate - Plain Ext.
- _____ 242. M - Persian Medallion Bon Bon - 4-Sides Up
- _____ 243. M - 5¼" Rd. Persian Medallion Berry Bowl
- _____ 244. Lt. M - 8" ICS Persian Medallion Bowl - Bearded Berry Ext.
- _____ **245. A - 6½" ICS Peacock Tail Bowl - First I've Seen - Rim Chip**
- _____ **246. Dk. B - 6½", 4-Sides Up Peacock Tail Hat**
- _____ 247. G - 4-Sides Up Peacock Tail Bon Bon - Radium and Nice
- _____ **248. Scarce A - 6" Peacock Tail Plate - Three-Sides Up - A Beauty**
- _____ 249. M - 7", 6-Ruffle Peacock Tail Bowl - Rim Chip
- _____ 250. G - 7½", 6-Ruffle Peacock Tail Bowl - Pretty
- _____ **250A. DEEP RED - Rare Fenton Flowers Ftd. Rose Bowl - Great Dark Irid.**
- _____ **251. SUPER RED - 8¼" ICS Collar Base Dragon and Lotus Bowl - Outstanding Example**
- _____ **252. Green - Flat 9¼" Fenton Holly Plate - One of the Finest**
- _____ 253. Stunning A - 9" Sq. 8-Ruffle Fenton Holly Bowl - WOW!
- _____ 254. Green - 8¼" Sq. 8-Ruffle Collar Base Dragon and Lotus Bowl - The Best
- _____ **255. A - 8¼" Sq. 8-Ruffle Collar Base Dragon and Lotus Bowl - Near Pastel**



- _____ 256. Rich M - 8¼" Sq. 8-Ruffle Collar Base Dragon and Lotus Bowl - Another Winner
- _____ 257. Spectacular B - 8¾" Sq. 8-Ruffle Collar Base Dragon and Lotus Bowl - A Must Have
- _____ 258. Pumpkin M - 9" Sq. 8-Ruffle Collar Base Chrysanthemum/Windmill Bowl
- _____ 259. B - 9" Sq. 8-Ruffle Persian Medallion Bowl - Bearded Berry Ext - SUPER
- _____ 260. Purple - N 8-Ruffle Peacocks Bowl - Rib Ext. - Electric Dandy
- _____ 261. Pastel M - N 8-Ruffle Peacocks Bowl - Rib Ext. - Rich Pinks and Yellows
- _____ 262. AO - 9", 8-Ruffle Collar Base Stippled Three-Fruits Bowl - Fantastic Butterscotch Overlay
- _____ 263. AO - Hearts and Flowers Compote - Great Pinks and Blues
- _____ 264. Super A - Fenton 8¼" Sq. 8-Ruffle Peacock at Urn Bowl - Rare Color
- _____ 265. Green - Fenton 8¼" Sq. 8-Ruffle Peacock at Urn Bowl - Super Example
- _____ 266. B - Fenton 8¼" Sq. 8-Ruffle Peacock at Urn Bowl - Multi Electric
- _____ 267. M - Fenton 8¼" Sq. 8-Ruffle Peacock at Urn Bowl - Rich Pinks
- _____ 268. SAPPHIRE - 10" Dugan Spiralex Vase - Outstanding and May Be One of a Kind
- _____ 268B. Electric B - N 10½" Thin Rib Vase - A Screamer
- _____ 269. Pastel M - PCE N Peacocks Bowl - Rib Ext. - Alluring Blues, Pinks, Yellows
- _____ 270. Show-Stopping Multi Elec. P - N PCE Stippled Strawberry Bowl - Rib Ext.
- _____ 271. Splendid Electric B - 9¼" Fenton 3 in 1 Vintage Bowl - WHEW!
- _____ 272. Sapphire - N 8-Ruffle Good Luck Bowl - Rib Ext. - Frosty Blues & Pinks, Rare Beauty
- _____ 273. PO - Question Marks Stemmed Bon Bon - Opal Handles
- _____ 274. P - Dugan Puzzle Stemmed Bon Bon with WHIMSIED Rolled Edge - Super Unusual
- _____ 275. W - Dugan Puzzle Stemmed Bon Bon Banana Boat Shape - Super Irid.
- _____ 276. P - N Fruits and Flowers Stemmed Bon Bon - Above Average
- _____ 277. G - N Fruits and Flowers Stemmed Bon Bon - Extra Nice
- _____ 278. W - N Peach Covered Sugar - Gold Trim - Lots of Blues and Pinks
- _____ 279. Soft B - 6", 6-Ruffle Ball Ftd. Poinsettia and Lotus Bowl (Waterlily)
- _____ 280. B - 6", 6-Ruffle Sailboats Bowl - Orange Tree Ext. - Terrific Multi-Color Example
- _____ 281. BA - Australian 5½", 12-Ruffle Kookaburra Berry Bowl - Soft Strike
- _____ 282. M - Australian 5½", 12-Ruffle Kingfisher (with Wattle Leaves) Bowl
- _____ 283. G - N Acorn Burrs Cream Pitcher - Beautiful Gold & Silvers
- _____ 284. P - N Grape and Cable Sweetmeat Compote w/Lid - Multi-Electric
- _____ 285. G - N Grape and Cable 9" Rd. Master Berry Bowl w/Thumbprint
- _____ 286. P - N Ball Ftd. 11" Grape and Cable Fruit Bowl - 5" Tall
- _____ 287. Rich M - N 9½" Peacock at Fountain Master Berry Bowl - Loaded with Pinks and Blues
- _____ 288. M - N Peacock at Fountain Spooner - Soft Blues and Pinks
- _____ 289. G - N Ball Ftd. 7¼" Wishbone 8-Ruffle Bowl - Scarce Color
- _____ 290. M - N Ball Ftd. 7¼" Wishbone 8-Ruffle Bowl - Extra Nice
- _____ 291. Beautiful M - N PCE Good Luck Bowl - Rib Ext.
- _____ 292. G - N PCE Greek Key Bowl - BW Ext. - Scarce Shape and Color
- _____ 293. Dark M - 8¾" Rd., Ball Ftd. Fantail Bowl - Outstanding Irid.
- _____ 294. B - Low Ruffled 9", 3 in 1, Ribbon Tie Bowl/Plate?
- _____ 295. Above Ave. G - 9" N Three-Fruits Plate/BW Ext.
- _____ 296. G - 9" N Strawberry Plate - BW Ext.
- _____ 297. Scarce Dugan Blue - 9" Apple Blossom Twigs Plate
- _____ 298. Extra Nice 9¼" Fenton Amethyst 3-Fruits 12-Sided Plate
- _____ 299. Exceptional, Rare M - 9½" Fenton Peacock Tail Plate - WOW!
- _____ 300. RARE B - 9½" Collar Base Peacock and Grape Plate - Electric Highlights
- _____ 301. G - 8" ICS Fenton Vintage Grape Bowl - Outstanding Example
- _____ 302. G - 8", 3 in 1, Fenton Thistle Bowl - Scarce Edge Treatment
- _____ 303. G - 8½", 3 in 1, Heart and Vine Bowl - Beautiful with Scarce Edge Treatment
- _____ 304. G - 8¾", 3 in 1, Collar Base Dragon and Lotus Bowl - Another Beauty
- _____ 305. Radium A - Mlbg. 8½", 6-Ruffle Grape Wreath Vt. Bowl - Eight-Sided Star Center
- _____ 306. A - Mlbg. ICS 8½" Blackberry Wreath Bowl - Outstanding Radium
- _____ 307. Rare Marigold Opal - 8¼" Collar Base Sq. 8-Ruffle Dragon and Lotus Bowl
- _____ 308. B - 7" Fenton 1911 Elks-Atlantic City Plate - Scarce and Beautiful
- _____ 309. Russet - N 11" Four Pillars Vase - Beautiful Example
- _____ 310. M - 9¼" JIP Mid-Size Morning Glory Vase - 4" Base, 7" Flare - Nice Item!
- _____ 311. Scarce W - N Daisy and Drape Vase - Turned in Top
- _____ 311A. G - 12" April Showers Vase - Peacock Tail Int. - Pretty
- _____ 312. M - Two-Handled Mary Ann Vase
- _____ 313. IB - Fostoria Brocaded Acorns Ice Bucket - Full Gold - With Handle
- _____ 314. Stretch G - Fan Vase - 8½" Tall - Sterling Inlaid Ship
- _____ 315. Scarce B - Dugan Beaded Shell Mug
- _____ 316. M - N Peacock At Fountain Water Pitcher
- _____ 317. M - N Peacock At Fountain Tumblers - Choice A or B
- _____ 318. B - Paneled Dandelion Tankard Water Pitcher
- _____ 319. B - Paneled Dandelion Tumblers - Choice A, B, C or D
- _____ 320. P - N Dandelion Tumblers - 4 x \$ - Beautifully Matched Group

- _____ 321. Pumpkin M - Butterfly and Berry Water Pitcher - Base Crack
- _____ 322. M - Butterfly and Berry Tumblers - 5 x \$
- _____ 323. B - Butterfly and Berry Tumblers - 2 x \$
- _____ 324. B - Beaded Stork In Rushes Tumblers - 4 x \$
- _____ 325. Great M - 10" Rd. Flared, Scalloped, Lg. Mikado Compote
- _____ 326. B - 6½", 6-Ruffle Fenton Stippled Rays Bowl
- _____ 327. A - 2-Sides Up Fenton Stippled Rays Bon Bon
- _____ 328. M - 2-Sides Up Fenton Stippled Rays Bon Bon
- _____ 329. Scarce M - 2-Sides Up Captive Rose Bon Bon
- _____ 330. B - 6", 6-Ruffle CRE Fenton Fern Panels Hat - Way Above Average
- _____ 331. B - 6", 6-Ruffle French Knots Hat - Pretty and Not Often Seen
- _____ 332. B - 5½" ICS Sailboats Bowl - Scarce Shape and Great Irid.
- _____ 333. M - 6", 6-Ruffle Sailboats Bowl - Above Average Irid.
- _____ 334. M - 9" Scarce 10-Ruffle Shape Windflower Bowl
- _____ 335. A - 7" ICS Mlbg. Blackberry Wreath Bowl - Satin
- _____ 336. Amber - Imp. Pansy Creamer
- _____ 337. M - Imp. Pansy Open Sugar Bowl
- _____ 338. A - 9½", 6-Ruffle Coin Dot Bowl
- _____ 339. P - 5", 6-Ruffle Imp. Zippered Heart Berry Bowls - Electric - 6 x \$
- _____ 340. P - 5" N Grape and Cable Thumbprint Berry Dishes - 2 x \$
- _____ 341. G - 8½", 8-Ruffle N Beads Bowl - Plain Int.
- _____ 342. B - 6½" ICS Fenton Acorn Bowl
- _____ 343. M - Wreath Of Roses Rose Bowl - Neat Item
- _____ 344. A - 7", 6-Ruffle Fenton Vintage Bowl
- _____ 345. M - Mlbg. Hanging Cherries Butter Dish/Lid - Base Chipped
- _____ 346. M - Corning Pyrex Insulator
- _____ 346B. B - Fenton Vintage Grape Epergne - Base Only
- _____ 347. M - Depression Era Covered Candy Dish
- _____ 348. P - Grape and Cable Powder Dish - Base Only
- _____ 349. Red Contemporary ICGA 1982 Frolicking Bears Cuspidor
- _____ 350. Contemporary Cobalt B - ICGA 1984 Lions Rose Bowl
- _____ 351. B - 5" Rd. Grapes Dish - Contemporary
- _____ 352. Plum Opal - LLCGC 1984 Bell - Contemporary
- _____ 353. IG - ICGA 1985 Mini Peacocks, 7 Pc. Water Set - Contemporary
- _____ 354. G - 8¼" ICS Collar Base Dragon and Lotus Bowl
- _____ 355. M - Lg. 6-Ruffle Persian Medallion Compote
- _____ 356. M - 6½", 6-Ruffle Fenton Peacock at Urn Compote
- _____ 357. P - Question Marks Stemmed Bon Bon
- _____ 358. M - 9¼", 8-Ruffle Grape and Cable Collar-Base Bowl
- _____ 359. M - Lotus and Grape Vt. Bon Bon
- _____ 360. Super M - 6½", 6-Ruffle Blackberry Spray Hat
- _____ 361. **PO - Banana Shape Honeycomb and Beads 7" Bowl - Nifty!**
- _____ 362. M - 7½", 6-Ruffle Leaf Chain Bowl
- _____ 363. M - 5½", 6-Ruffle Ftd. Panther Bowl
- _____ 364. M - 6", 6-Ruffle Ftd. Waterlily Bowl
- _____ 365. **P - 6", 6-Ruffle Fruits and Flowers Bowl - Beautiful**
- _____ 366. M - 6", 6-Ruffle Fruits and Flowers Bowl - Also Very Nice

- _____ 367. M - 6", 6-Ruffle Grape and Cable Bowl - BW Ext.
- _____ 368. M - 5½" JIP, CRE Fern Panels Hat - Scarce Shape
- _____ 369. **B - 6½", 4-Sides Up Pepper Plant Hat**
- _____ 370. M - 8¼" N 3 in 1 Crimped Blossom and Shell Bowl - Plain Int. Quite Scarce
- _____ 371. M - 9", 6-Ruffle Fenton Vintage Bowl
- _____ 372. **P - N 6½" Squatty Fine Rib Vase**
- _____ 373. A - N 6½" Squatty Fine Rib Vase
- _____ 374. M - N 6¼" Squatty Tree Trunk Vase
- _____ 375. P - N 9¼" Diamond Point Vase
- _____ 376. B - Fenton 9½" Fine Rib Vase
- _____ 377. M - Fenton 8¾" Diamond Point Columns Vase
- _____ 378. P - Fenton 11¼" Long Thumbprint Vase
- _____ 379. M - Imp. Ripple 9½" Vase - Lots of Pinks
- _____ 380. P - Fenton 10½" April Showers Vase - Chip on Bottom
- _____ 381. P - Fenton 10½" April Showers Vase
- _____ 382. M - Fenton 11¼" April Showers Vase
- _____ 383. G - N Fine Cut and Roses Ftd. Candy Dish

THANK YOU FOR ATTENDING TODAY

SPECIAL NOTE:

CALENDAR OF AUCTION EVENTS

Saturday, September 15, 2001

Carnival Glass at Boonville Center

Saturday, October 20, 2001

Air Capital Convention - Wichita, Kansas

Saturday, November 10, 2001

Carnival Glass at Boonville Center

**Booking NOW for
11th Annual New Year's
Extravaganza**

Saturday, January 5, 2002

**For Free Color Catalogs & Information Write:
Mickey Reichel**

516 Third Street, Boonville, MO 65233-1536

or Call: 660-882-5292 days or

660-882-5283 evenings

E-mail: mreichel@undata.com

Website: www.yourauction page.com/reichel

Call today for 2001 bookings.

(1 piece or entire collection!!)

MICKEY REICHEL
ANTIQUE & AUCTION, L.C.
 516 THIRD STREET
 BOONVILLE, MO 65233-1536

PRESORTED
 FIRST CLASS MAIL
 US POSTAGE PAID
 SEDALIA, MO
 PERMIT 217

FIRST CLASS MAIL

RETURN SERVICE REQUESTED

SPECIAL INVITATION TO:



8*71*****MIXED AADC 650

LEE MARKLEY

PO BOX 306

MENTONE, IN 46539-0306



Top: 55, 56, 64, 58; Middle: 59, 60, 61, 62
 Bottom: 63, 57, 65, 66