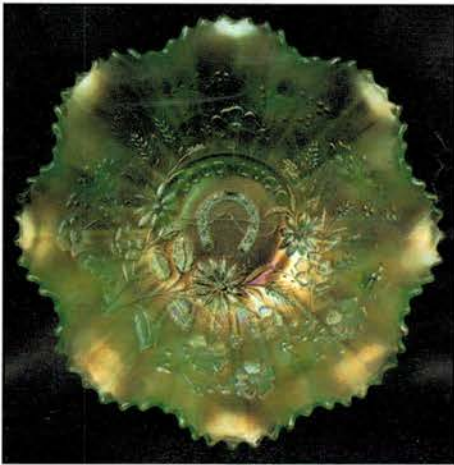


BURNS

AUCTION SERVICE



Lot #20



Lot #20A



Lot #21



Lot #45



Lot #'s 15, 16



Lot #41

A.C.G.A. Convention Auction

Friday, July 13, 2001

9:30 A.M.

Preview 8:00 A.M.

at the

Embassy Suites

204 Centreport Drive

Greensboro, North Carolina 27409

(336) 668-4535

William Richards, III

Auctioneer

North Carolina License Numbers 6832, 6833

Well, this year we're going to the (almost) Deep South... to North Carolina for the annual A.C.G.A. Convention.

This year's convention is to be held in Greensboro at the Embassy Suites and it should be a good one. This will be the first time a major Carnival Glass Convention will be held in this neck of the woods and we hope all will come with bells on. At this time the Embassy Suites is filled but right next door is the Homewood Suites which will host the rest of us; so make your reservations now!

This year's auction will consist of glass from here and yonder with an accent (Southern) on rare and unusual – something for everyone.

To make reservations, call the Embassy Suites (same company owns both) and make your plans. Call them at (336) 668-4535 or (336) 393-0088.

For information on the convention and its activities call Anne Smith at (919) 496-5518.

CHECK OUT BURNS AUCTION SERVICE ON THE WEB!

Visit our new Web site for information on upcoming auctions, complete auction listings and photos of auction highlights. You can e-mail your bids or requests for information.

www.woodsland.com/burnsauction e-mail: brnzauctsv@aol.com

For further information, or if we can be of assistance call or write:

BURNS AUCTION SERVICE

Tom Burns

P.O. Box 608, Bath, NY 14810

(607) 776-7942

Cell #: (607) 731-9302 (do not leave messages)

Bill Richards

44 Water St., Poland, OH 44514

(330) 757-2001

FAX (330)-757-4917

Bill Richards, III

2253 Country Lane, Poland, OH 44514

(330) 755-2620

Email: BRNZAUCTSV@aol.com

Mail Bids honored under the following conditions:

1. No deposit required, Bidders will take full responsibility to honor any and all bids we execute for them. Payment in full plus postage and handling required after notification and before we ship any item to them.
2. Items are bid on in perfect condition with average or above average iridescence OR as listed in the brochures. Bids will not be carried out when damage on an item has been found during the auction. **PEOPLE PRESENT AT AUCTION ARE RESPONSIBLE FOR FINDING ANY PINHEADS, WEAR, SPOTTINESS, MANUFACTURER'S DEFECTS OR ANY OTHER MINOR FLAWS, ETC.**
3. Successful bidders will be notified by collect call from the auctioneer (**so be sure to include the phone number**).
4. Phone inquiries about the glass or any other questions are welcome.
5. If you have some other person at the auction bidding for you, they must pay for the item before taking it.
6. Any terms or conditions given the day of the auction will supersede any previously published information.
7. Mail, e-mail, fax and phone bids are due by Wednesday, July 11, 2001.

- | | |
|--|---|
| ____ 1. 14" Tall Fenton Diamond Point Columns Swung Vase – Mari./ Clear | ____ 13. EUROPEAN STAR AND FAN 8 PC. WINE SET – MARI. (RARE AND VERY DESIRABLE SET) |
| ____ 2. 6" M'burg Blackberry Wreath Ruffled Sauce – Mari. | ____ 14. EUROPEAN PINEAPPLE AND FAN 8 PC. WINE SET – MARI. (RARE AND DESIRABLE SET) |
| ____ 3. 9–10" Tall Dugan Target Swung Vase – P. Opal. | ____ 15. 10-1/2" DUGAN WISHBONE AND SPADES FLAT CHOP PLATE – PURP. (RARE AND DESIRABLE; HAS BRIGHT IRID. – A SUPER EXAMPLE) |
| ____ 4. (Maker?) Tall Interior Swirl Tumbler – Mari. | ____ 16. 6" DUGAN WISHBONE AND SPADES FLAT PLATE – PURP. (ABSOLUTELY FANTASTIC – HAS TO BE ONE OF THE BEST) |
| ____ 5. N G&C Spooner – Purp. (nice color and irid.) | ____ 17. 6" DUGAN WISHBONE AND SPADES FLAT PLATE – P. OPAL. (VERY SCARCE COLOR FOR THIS PATTERN) |
| ____ 6. 9-1/2" M'BURG WHIRLING LEAVES 6 RUFFLED BOWL – DK. MARI. (BEAUTIFUL RADIUM IRID.; NICE) | ____ 18. N CORN VASE W/ PLAIN BASE – WHITE (VERY SCARCE W/ SUPER IRID.) |
| ____ 7. 8" FENTON STRETCH LOW CUPPED IN BOWL – RED (TOUGH PIECE TO FIND) | ____ 19. N PEACOCKS 8 RUFFLED BOWL W/ RIBBED EXT. – VERY ODD AMYTH. (HAS A SMOKEY TINT W/ GREAT IRID.; NICE) |
| ____ 8. 8-1/2" IMPERIAL TAFFETA LUSTER LG. ROSE BOWL – PURP. (ABSOLUTELY FANTASTIC IRID.; VERY SCARCE) | ____ 20. N GOOD LUCK FLARED PLATE W/ RIBBED EXT. – WHITE (SUPER RARE W/ FANTASTIC IRID.; NOT REALLY FROSTY) |
| <u>1600</u> ____ 9. N CORN VASE W/ STALK BASE – POP BOTTLE AQUA/ LT. MARI. (EXTREMELY RARE COLOR FOR THIS ITEM; PERFECT AND UNUSUAL) | |
| ____ 10. EUROPEAN RISING SUN FTD. HANDLED WATER PITCHER – MARI. (RARE ITEM W/ NICE DARK COLOR AND IRID.) | |
| ____ 11. European Arc Patterned Covered Butter Dish – Mari. (rare item; nice irid.) | |
| ____ 12. EUROPEAN RASPBERRY BAND 3 PC. TUMBLE UP SET – MARI. (RARE AND VERY DESIRABLE SET) | |

- 5000 20A. N GOOD LUCK 8 RUFFLED BOWL W/ RIBBED EXT. – DK. ICE GREEN (EXTREMELY RARE ITEM NOT OFTEN FOUND; DARK BASE COLOR W/ GOLD IRID.)
- 1800 21. N SINGING BIRDS HANDLED MUG – SAPPHIRE (SUPER RARE BASE COLOR W/ GREAT IRID.)
- 775 22. PAIR 8-3/4" TALL FENTON FLORENTINE WHEEL CUT ETCHED CANDLESTICKS – WHITE (RARE TO BEGIN WITH, THEN ADD THE ETCHED DESIGN – SUPER SET)
23. 7-1/2–8" M'BURG LETTERED COURTHOUSE ICE CREAM SHAPED BOWL – AMYTH. (RARE AND RADIUM; HAS SOME SILVER HIGHLIGHTS)
24. 7-1/2–8" Imperial Heavy Grape Flat Plate – Purp. (super irid.; nice)
- 700 25. 9" FENTON HOLLY 8 RUFFLED BOWL – RED/ AMBERINA (RARE; HAS GOLDISH HIGHLIGHTS)
26. N HEART AND FLOWERS BOWL W/ P.C.E. AND RIBBED EXT. – WHITE (RARE SHAPE AND VERY DESIRABLE; AVERAGE IRID.)
- 650 27. 9-3/4" FENTON BIRDS AND CHERRIES ROUND BOWL W/T.C.E. – BLUE (RARE ITEM; HAS A DARK SATINY IRID.)
- 750 28. 8-1/2–9" FENTON TWO FLOWERS SPATULA FTD. FLAT PLATE – DK. MARI. (RARE AND VERY DESIRABLE; DARK AND SATINY)
29. 9" FENTON PEACOCK AND GRAPE 8 RUFFLED BOWL – P. OPAL. (QUITE AN ATTRACTIVE EXAMPLE; REALLY NICE)
- 1500 30. 9-1/2" FENTON LOTUS AND GRAPE FLAT PLATE – BLUE (RARE AND VERY DESIRABLE; BRIGHT SATINY FINISH W/ GREAT DETAIL)
31. 8-1/2–9" Fenton Peacock and Grape I.C. Shaped Bowl – Elec. Blue (super bright color and irid.; really nice)
32. (2) 12–13" Tall Fenton Fine Rib Middle Size Vases – Aqua/ Sapphire (rare pair; well matched – selling so much each for pair)
33. 9-1/2" European Four Flowers Variant Lg. Ice Cream Bowl – Purp. (very scarce item w/ dark satiny irid.)
34. (2) European African Shield Vases – Mari. (selling choice; scarce)
35. 4–5" European Cane Patterned Round Covered Powder Jar – Mari. (unusual item w/ dark color)
- 550 36. Westmoreland Orange Peel 6 Pc. Punch Set – Amyth. (very scarce set in this color)
37. N SINGING BIRDS HANDLED MUG – HOREHOUND (RARE BASE COLOR W/ REALLY NICE IRID.)
38. N G&C COVERED SWEETMEAT COMPOTE – LAVENDER (QUITE A RARE BASE COLOR W/ SUPER IRID.)
39. 7-1/2–8" Fenton G&C 2 Sided Banana Dish Whimsey – Mari. (very scarce shape for this item; satiny)
40. 7-1/2–8" FENTON VINTAGE GRAPE 2 SIDED BANANA DISH WHIMSEY – AMYTH. (RARE AND UNUSUAL – I'VE NEVER SEEN ONE)
- 800 41. 7–7-1/2" FENTON VINTAGE GRAPE FLAT PLATE – ELEC. BLUE (ABSOLUTELY FANTASTIC IRID.; ONE OF THE BEST!)
42. 8–8-1/2" Fenton Peacock and Grape 8 Ruffled Bowl – Elec. Blue (another item w/ fantastic irid. – sorta radium)
43. 9–9-1/2" FENTON ORANGE TREE FLAT PLATE – BLUE (VERY SCARCE W/ A NICE BRIGHT SATINY IRID.)
- 1000 44. 9–9-1/2" FENTON ORANGE TREE FLAT PLATE – DK. MARI. (SUPER DARK EXAMPLE – GREAT COLOR AND DETAIL)
- 1550 45. FENTON DIAMOND RIB JARDINERE WHIMSEY – AMYTH (DAMAGED – CRACK ACROSS BASE AND ROUGHNESS IN PATTERN – BUT THIS IS ONE BEAUTIFUL PIECE OF GLASS)
46. 9–9-1/2" FENTON VINTAGE GRAPE FTD. FERN DISH WHIMSEY FLARED PLATE – ELEC. BLUE (RARE SHAPE AND ABSOLUTELY BEAUTIFUL)
47. 8-1/2" Fenton Vintage Grape Ftd. Fern Dish Whimsey Bowl w/ 3 In 1 Edge – Amyth. (very scarce shape; nice satiny irid.)
48. 8-1/2–9" Fenton Vintage Grape Ftd. Fern Dish Whimsey 6 Ruffled Bowl – Amyth. (very scarce shape; nice satiny irid.)
49. Fenton Fern Panels Ruffled Hat – Mari./ Milk Glass (very scarce and underpriced; nice)
- 1200 50. 9-1/2" FENTON LEAF CHAIN FLAT PLATE – BLUE (RARE AND DESIRABLE W/ A BRIGHT IRID.)
- 2200 51. 9-1/2" FENTON LEAF CHAIN FLAT PLATE – DK. MARI. (SUPER DARK W/ GREAT IRID.)
52. 9-1/2" Fenton Peacock at the Urn Plate – Blue (very scarce w/ a nice average irid.)
53. Dugan Persian Garden Ruffled Fruit Bowl and Base – Mari. (sorta pastel marigold – nice irid.; scarce)
54. 10" Dugan Petal and Fan Lg. 6 Ruffled Bowl w/ J. H. Ext. – Purp. (great color and irid.; rough on base)
55. 9" N Strawberry 8 Ruffled Bowl w/ Plain Ext. – Amyth. (super color and irid.; really nice)
56. 8-3/4" Dugan Apple Blossom Twigs Low Ruffled Bowl/Plate – Blue (scarce color; fair irid.)
57. 8-1/2" Fenton or M'burg Vintage Grape Bowl w/ Wide Panel Ext. – Lt. Mari. (sorta radium)
58. 6-3/4" M'burg Holly Sprig 6 Ruffled Bowl – Amyth. (radium and very attractive; nice)
59. 6-1/4" Fenton Acorn Deep Round Bowl – Lt. Mari.
60. 5-3/4" Imperial Embossed Scroll 8 Ruffled Sauce w/ File Ext. – Purp. (super color and irid.)
61. 6" Fenton Persian Medallion 6 Ruffled Low Sauce – Mari.
- 600 62. 12-3/4" TALL X 4-1/2" BASE X 5-1/4" FLARE N TREE TRUNK MID SIZE SWUNG VASE – ELEC. BLUE (SUPER BRIGHT IRID. ON A SCARCE ITEM; ROUGHNESS ON EDGE)
63. 17" Tall x 4" Base Fenton Rustic Mid Size Swung Vase – Blue (nice satiny finish)
64. 8-1/2" Tall Fenton Butterfly and Berry Swung Vase – Blue (nice satiny finish)
65. 7-1/4" Tall Imperial Miniature Morning Glory Swung Vase – Dk. Mari. (nice color)
66. 8" Tall x 4-1/2" Base Swung Vase – Mari.
67. 16-3/4" Tall x 4" Base Imperial Ripple Large Swung Vase – Mari. (nice size and color)
68. 7-1/2" Imperial Heavy Grape Flat Plate – Purp. (silvery irid.)
69. 6-1/2" Tall x 2-3/4" Base x 5-3/4" Flare Imperial Wide Panel Squatty Flared Vase – Mari./ Clear
70. 9-1/4" TALL FENTON FINE RIB STANDARD SWUNG VASE – RED (DARK COLOR AND IRID.; REALLY RED)
71. 10-1/4" Tall Fenton Fine Rib Standard Swung Vase – Sapphire (very scarce base color; has an odd swing)

- _____ 72. 10-1/4" Tall N Thin Rib Standard Swung Vase – White (scarce; has gold highlights)
- _____ 73. 8-1/4" Tall Dugan Lined Lattice Swung Vase – Purp. (scarce; has great irid.)
- _____ 74. 10" Tall Fenton Fine Rib Standard Swung Vase – Red (great color and irid. but has a BB hole)
- _____ **75. 11-1/2" TALL N FOUR PILLARS SWUNG VASE – AQUA OPAL. (VERY SCARCE; HAS PERFECT COLOR AND FEET)**
- _____ 76. 10-1/2" Tall Dugan Spiralx Swung Vase – P. Opal. (nice opal.)
- _____ 77. 10-3/4–11" Tall N Thin Rib Standard Swung Vase – Elec. Blue (super irid.; really nice item)
- 1300 _____ **78. M'BURG PEACOCK AT THE URN LARGE 8 RUFFLED STEMMED COMPOTE – LT. MARI. (RARE AND DESIRABLE; LIGHT IN COLOR)**
- _____ 79. N Three Fruits Domed 8 Ruffled Bowl w/ Basketweave Ext. – Amyth. (satiny irid.)
- _____ 80. N Peacock at the Fountain Handled Water Pitcher – Mari. (scarce; nice average color)
- _____ 81. 9-1/2" N Wishbone Bowl w/ P.C.E. and Basketweave Ext. – Green (very scarce; has a nice satiny finish)
- _____ 82. N Wishbone Tumbler – Amyth. (scarce; average irid.)
- _____ 83. N Singing Bird Stippled Handled Mug – Dk. Mari. (very scarce w/ super color and irid.)
- _____ 84. N Singing Bird Handled Mug – Purp.
- _____ **85. N BEADED CABLE FTD. RUFFLED ROSE BOWL – AQUA OPAL. (VERY SCARCE AND VERY DESIRABLE; A REALLY NICE EXAMPLE)**
- _____ 86. N Beaded Cable Ftd. Ruffled Rose Bowl – Elec. Blue (very scarce; nice irid.)
- _____ 87. N Daisy and Plume/ Fern Int. Stemmed 6 Ruffled Compote – Green (scarce)
- _____ 88. N Greek Key 8 Ruffled Bowl w/ Basketweave Ext. – Amyth. (scarce w/ a satiny finish)
- _____ 89. N Three Fruits Plate w/ Basketweave Ext. – Green (scarce w/ a satiny finish)
- 800 _____ **90. N EMBROIDERED MUMS RUFFLED BOWL W/ RIBBED EXT. – ICE BLUE (RARE AND VERY DESIRABLE; NICE COLOR AND IRID.)**
- _____ **91. N HEART AND FLOWERS RUFFLED BOWL W/ PLAIN EXT. – DK. ICE BLUE (RARE VARIATION; DARK W/ AVERAGE IRID.)**
- _____ 92. N Peacocks Ruffled Bowl w/ Ribbed Ext. – Blue Opal. (not carnival; very scarce)
- _____ 93. N Heart and Flowers Stemmed Ruffled Compote w/ Plain Ext. – White (scarce w/ nice irid.)
- _____ 94. 7-1/2" N Fruits and Flowers Plate w/ Basketweave Ext. – Green (scarce w/ a satiny finish)
- _____ **95. N FRUITS AND FLOWERS STEMMED HANDLED BON BON W/ BASKETWEAVE EXT. – ELEC. BLUE (SUPER IRID.; VERY DESIRABLE)**
- _____ 96. 10-1/2" Tall N Four Pillars Swung Vase – Aqua Opal. (scarce; nice opal. w/ good feet)
- _____ 97. 9-1/2" Tall N Tree Trunk Standard Swung Vase – Aqua Opal. (rare and very desirable; has small flake on butterscotch overlay)
- _____ 98. N Daisy and Plume/ Berry Int. Ftd. 8 Ruffled Candy Dish – Mari. (satiny finish)
- _____ 99. 8-1/2" N G&C Variant Bowl w/ P.C.E. and Ribbed Ext. – Dk. Mari. (a super, super example w/ great irid.)
- 500 _____ **100. N MEMPHIS 8 PC. RUFFLED FRUIT BOWL SET – PURP. (RARE AND DESIRABLE SET; WELL MATCHED)**
- _____ 101. 7-1/2" M'burg Little Stars 6 Ruffled Bowl – Amyth. (very scarce w/ a really nice satiny finish)
- _____ 102. 5-1/2" M'burg Blackberry Wreath Tri-Cornered Sauce – Dk. Mari. (radium and rare; a great shape w/ great irid.)
- _____ 103. (2) M'burg Diamond Tumblers – Amyth. (nice irid.; selling choice)
- _____ 104. (2) M'burg Diamond Tumblers – Green (nice irid.; selling choice)
- _____ 105. 9-3/4" M'burg Nesting Swan 6 Ruffled Bowl – Green (very scarce; has a satiny finish)
- _____ 106. 9-1/2" Imperial Star of David 8 Ruffled Bowl – Amyth. (scarce; nice color and irid.)
- _____ 107. 9-1/2" Imperial Star of David 8 Ruffled Bowl – Amyth. (silvery irid.)
- _____ 108. (2) Imperial Grape Tumblers – Amyth. (great irid.; selling choice)
- _____ 109. 7-1/2" Imperial Heavy Grape Flat Plate – Purp. (super irid.)
- _____ **110. IMPERIAL GRAPE 8 PC. WINE SET – PURP. (RARE AND VERY DESIRABLE; NICE IRID.)**
- _____ 111. Imperial Grape Water Carafe – Purp. (very scarce w/ great color and irid.)
- _____ 112. 13-1/2" Tall x 8-3/4" Flare x 4-3/4" Base Imperial Ripple Funeral Vase – Amber (rare item but has bruise on base)
- _____ 113. Imperial Fashion Rose Bowl – Mari. (scarce w/ nice irid.)
- _____ 114. 9" Imperial 3 in 1 Ice Cream Shaped Bowl – Mari. (super irid.)
- _____ 115. Imperial Frosted Block Rose Bowl – Mari.
- _____ 116. Imperial Geometric Patterned Stemmed Ruffled Compote – Mari.
- _____ 117. 8-1/2" Dugan Single Flower Exterior Ruffled Bowl w/ Enameled Foxglove Decor – P. Opal. (attractive item)
- _____ 118. 9" Dugan Stippled Petal Domed Ruffled Bowl – P. Opal. (nice color and opal.)
- _____ 119. Dugan Paneled Cherries Domed Ruffled Bowl – Mari.
- _____ **120. DUGAN STORK IN THE RUSHES HANDLED MUG – AMYTH. (VERY SCARCE; NICE IRID. AND DETAIL)**
- _____ 121. Odd Depression Era Handled Pitcher w/ Ice Lip – Mari. (super irid.)
- _____ 122. Westmoreland Carolina Dogwood Deep Ice Cream Shaped Bowl – Mari. (very scarce in this color; average irid.)
- _____ **123. 7-1/2" WESTMORELAND DAISY INTAGLIO ROUND FLARED BOWL – P. OPAL. (NEVER SEEN THIS PATTERN LET ALONE IN THIS COLOR)**
- _____ 124. European Hobstar and Cut Triangles Rose Bowl – Amyth. (very scarce base color)
- _____ 125. Fenton Mikado Lg. Flared Stemmed Compote – Dk. Mari. (actually quite an attractive item; nice)
- _____ 126. 9" Fenton Orange Tree 6 Ruffled Bowl – Dk. Mari. (really nice color)
- _____ 127. (2) Fenton Lotus and Poinsettia Ftd. Ruffled Sauces – Mari./ Vaseline (really nice items; selling choice)
- _____ 128. 6-3/4-7" Fenton Lions 6 Ruffled Bowl – Mari. (scarce)
- _____ 129. Fenton Pastel Swan – Ice Green
- _____ **130. FENTON ORANGE TREE STANDARD FLARED HANDLED MUG – DK. SAPPHIRE (VERY SCARCE BASE COLOR; NICE)**
- _____ 131. Fenton Orange Tree Standard Flared Handled Mug – Lime Green/ Mari. (scarce color w/ nice irid.)
- _____ 132. 10-1/2" Fenton Two Flowers Ball Ftd. 8 Ruffled Bowl – Lime Green/ Mari. (rare color for this item; really nice)

- _____ 133. 4-3/4" Fenton Peacock Tail Deep Round Sauce – Blue (nice color and size)
- _____ 134. Fenton Peacock at the Urn Goblet Shaped Compote – Lime Green/ Mari. (very scarce w/ a nice base color)
- 1000 135. **9-1/4–9-1/2" FENTON PEACOCK AT THE URN FLAT PLATE – DK. MARI. (VERY SCARCE; HAS SUPER COLOR AND IRID.)**
- _____ 136. 6-1/4" Fenton Pine Cone Flat Plate – Blue (scarce w/ nice irid.; has manuf. flaw on edge)
- _____ 137. **9" FENTON DRAGON AND LOTUS 8 RUFFLED BOWL – AMBER (VERY SCARCE BASE COLOR AND NICE IRID.)**
- _____ 138. Fenton Stippled Rays Turned In Rose Bowl – Amyth. (very scarce shape)
- _____ 139. Fenton Orange Tree Handled Loving Cup – Mari. (scarce and desirable; nice color and irid.)
- _____ 140. **FENTON ZIG ZAG/ ENAMELED COLUMBINE HANDLED WATER PITCHER – BLUE (RARE AND VERY DESIRABLE; GREAT IRID. AND DECOR.)**
- _____ 141. **9" FENTON HOLLY 8 RUFFLED BOWL – BRICK RED/ AMBERINA (RARE BASE COLOR W/ A SATINY IRID.)**
- _____ 142. 10" Fenton Fine Rib Standard Swung Vase – Red (very scarce w/ nice color and irid.)
- _____ 143. 11-1/2" Fenton April Showers Swung Vase – Green (actually quite a nice example)
- _____ 144. Pair 8-3/4" Tall Fenton Stretch Florentine Candlesticks – Wisteria (one damaged but they're still rare)
- 1000 145. **IMPERIAL LUSTRE ROSE LG. RUFFLED FTD. FRUIT BOWL – PURP. (VERY RARE AND VERY DESIRABLE; GREAT IRID.)**
- _____ 146. **M'BURG ROSES AND FRUIT STEMMED HANDLED BON BON – MARI. (RARE AND VERY DESIRABLE; RADIUM)**
- 750 147. **6" M'BURG ROSILAND 6 RUFFLED SAUCE – AMYTH. (MUCH RARER THAN PEOPLE THINK!; A GREAT SATINY FINISH)**
- _____ 148. **IMPERIAL LUSTRE ROSE LG. RUFFLED FTD. FRUIT BOWL – SMOKE (ANOTHER VERY SCARCE ITEM; NICE)**
- _____ 149. 10" Imperial Wide Panel Swung Vase – Smoke (great irid.)
- 2050 150. **N G&C 12 PC. MASTER PUNCH SET – PURP. (RARE AND DESIRABLE; HAS A BRIGHT MULTI-COLORED SATINY FINISH – PINHEAD FLAKE ON ONE POINT)**
- _____ 151. 8-1/2" Imperial Grape I.C. Shaped Bowl – Dk. Mari. (rare shape for this pattern; great color)
- _____ 152. 8-1/2" Dugan Round Up I.C. Shaped Bowl – Amyth./ Lavender (very scarce w/ really nice color and irid.)
- _____ 153. **DUGAN DOUBLE STEM ROSE DOMED 10 RUFFLED BOWL – PURP. (VERY SCARCE AND VERY DESIRABLE; A SUPER ITEM)**
- _____ 154. **M'BURG LEAF AND LITTLE FLOWERS FLARED COMPOTE – MARI. (VERY SCARCE W/ A SATINY FINISH)**
- _____ 155. M'burg Mayan I.C. Shaped Bowl – Green (super irid.)
- _____ 156. **N DANDELION HANDLED MUG – AQUA OPAL. (RARE AND DESIRABLE, W/GREAT OPAL. AND IRID.)**
- _____ 157. **N. DRAPERY ROSE BOWL – AQUA OPAL. (ANOTHER REALLY NICE PASTEL EXAMPLE)**
- _____ 158. **6-3/4" TALL N DRAPERY SWUNG VASE – GREEN (RARE AND VERY DESIRABLE ITEM IN THIS COLOR; REALLY NICE)**
- _____ 159. N Round Handled Bushel Basket – Lime Ice Green (rare and desirable base color; really nice)
- 2000 160. **N LATTICE AND POINSETTIA FTD. 8 RUFFLED BOWL W/ RIBBED EXT. – ICE BLUE (VERY RARE AND VERY DESIRABLE; GREAT IRID.)**
- _____ 161. N Springtime Ind. Round Berry Bowl – Purp. (very scarce item; nice irid.)
- _____ 162. **N G&C 7 PC. WATER SET – GREEN (RARE BASE COLOR AND A DESIRABLE SET)**
- 700 163. **N G&C STIPPLED PUNCH BOWL TOP ONLY – BLUE (WHERE DO YOU FIND THESE? THE BASE IS MUCH EASIER TO FIND)**
- _____ 164. **N G&C FTD. CENTERPIECE BOWL – WHITE (RARE AND VERY DESIRABLE; FROSTY AND NICE)**
- 600 165. **N POPPY SHOW FLARED PLATE – DK. MARI. (RARE AND DESIRABLE, W/ GREAT IRID.)**
- 625 166. **N POPPY SHOW 8 RUFFLED BOWL – DK. MARI. (RARE AND DESIRABLE, W/ GREAT COLOR AND IRID.)**
- _____ 167. **N POPPY SHOW 8 RUFFLED BOWL – PASTEL MARI. (REALLY TOUGH ITEM, W/ GREAT IRID.; REALLY NICE)**
- 750 168. **6-1/4" N FERN BRAND CHOCOLATES HAND GRIP PLATE W/ BASKETWEAVE EXT. – AMYTH. (RARE AND DESIRABLE, W/ GREAT IRID.)**
- _____ 169. N Leaf and Beads Ftd. Rose Bowl – Gr. Opal. (not carnival; nice opal.)
- _____ 170. N Good Luck 8 Ruffled Bowl w/ Ribbed Ext. – Black Amyth. (very scarce, w/ great color and super irid.)
- _____ 171. **N PEACOCKS PLATE W/ RIBBED EXT. – AMYTH. (VERY SCARCE, W/ BRIGHT MULTI-COLORED IRID.)**
- _____ 172. N Peacocks 8 Ruffled Bowl w/ Ribbed Ext. – Blue (very scarce, w/ great color and irid.; nice)
- _____ 173. **N PEACOCKS PLATE W/ PLAIN EXT. – ICE GREEN (RARE AND VERY DESIRABLE; HAS SUPER IRID.)**
- _____ 174. N Three Fruits Stippled Plate w/ Ribbed Ext. – Dk. Purp. (very scarce, w/ nice color and irid.)
- _____ 175. **N THREE FRUITS MEDALLION FTD. 8 RUFFLED BOWL W/ MEANDER EXT. – DK. ICE GREEN (RARE AND VERY DESIRABLE; REALLY NICE)**
- 1100 176. **10" N WILD STRAWBERRY LG. 8 RUFFLED BOWL W/ BASKETWEAVE EXT. – LIME ICE GREEN (RARE AND VERY DESIRABLE; SUPER ITEM)**
- _____ 177. N Fine Cut and Roses Ftd. Rose Bowl w/ Fancy Int. – White (great item, w/ a small flake on foot)
- _____ 178. 9" Dugan Double Stem Roses Domed Flared Plate – Purp. (very scarce shape, w/super color and irid.)
- _____ 179. 9" Dugan Flowers and Frames Domed 10 Ruffled Bowl – Purp. (very scarce, w/ nice color and irid.)
- _____ 180. **11-1/2" DUGAN PERSIAN GARDEN LG. 6 RUFFLED FRUIT BOWL – P. OPAL. (RARE AND DESIRABLE, W/ GREAT COLOR AND OPAL.)**
- _____ 181. 9-1/2" Dugan Cherries 8 Ruffled Bowl w/ Jeweled Heart Ext. – P Opal. (super opal, w/ nice irid.)
- _____ 182. Dugan Honeycomb Rose Bowl – P. Opal. (very scarce; nice color and opal.)
- _____ 183. 10-1/2" Tall Westmoreland Corinth Swung Vase – Teal (scarce color)
- _____ 184. 8-1/2" Imperial Heavy Grape Flat Plate – Pastel Mari. (super, super irid.; very scarce)

- 2700 185. **IMPERIAL LOGANBERRY VASE – PURP. (RARE AND VERY DESIRABLE; NICE COLOR, W/ AN UNUSUAL IRID.)**
186. Imperial Grape Stemmed 6 Ruffled Compote – Amyth. (scarce, w/ super irid.)
- 750 187. **IMPERIAL LUSTRE ROSE FTD. FERNERY – AMBER (A VERY RARE ITEM, W/ SUPER IRID.)**
- 1300 188. **9-1/4" M'BURG MANY STARS I.C. SHAPED BOWL W/ 5 POINTED STAR – AMYTH. (RADIUM AND RARE; SUPER IRID.)**
189. **9-3/4" M'BURG PEACOCK AT THE URN LG. I.C. BOWL – AMYTH. (RADIUM, HAS BEE AND NO BEADING; A REALLY TOUGH ITEM)**
190. 9" M'burg Rays and Ribbons Deep Round Flared Bowl – Amyth. (radium and scarce)
- 500 191. **M'BURG HANGING CHERRIES HANDLED WATER PITCHER – AMYTH. (RARE ITEM; SATINY, W/ A MANUF. FLAW ON EDGE)**
192. 10" M'burg Blackberry Wreath Lg. Ice Cream Bowl – Green (radium and very scarce; nice item)
193. 9-3/4" M'burg Holly Whirl Lg. 6 Ruffled Bowl – Green (scarce and satiny; nice irid.)
194. 9-3/4" Tall Fenton Fine Rib Standard Swung Vase – Aqua. (scarce color, w/ nice irid.)
- 900 195. **5-3/4" FENTON LOTUS AND POINSETTIA FTD. 6 RUFFLED SAUCE – RED (A SUPER EXAMPLE, W/ GREAT COLOR AND IRID.)**
- 800 196. **6" FENTON LOTUS AND POINSETTIA FTD. 6 RUFFLED SAUCE – REVERSE AMBERINA OPAL. (ANOTHER SUPER EXAMPLE, W/ GREAT SATINY IRID.)**
- 750 197. **6" FENTON LOTUS AND POINSETTIA FTD. 6 RUFFLED SAUCE – ICE GREEN OPAL. (RARE AND VERY DESIRABLE; SUPER OPAL. AND NICE)**
198. **11-3/4" FENTON TWO FLOWERS FTD. CHOP PLATE – MARI. (RARE AND VERY DESIRABLE; FLAW ON ONE POINT)**
199. **10-1/2" FENTON STAG AND HOLLY LG. 8 RUFFLED BALL FTD. BOWL – AQUA./ MARI. (RARE BASE COLOR, W/ A NICE SATINY FINISH)**
200. **9-1/2" FENTON PEACOCK AND GRAPE FLAT PLATE – DK. MARI. (RARE AND VERY DESIRABLE; DARK COLOR AND GREAT IRID.)**
201. Fenton Orange Tree Ftd. Hatpin Holder – Pastel Mari. (not light mari.; a true pastel, w/ perfect feet)
202. SURPRISE!
203. **6-1/4" FENTON "UTAH LIQUOR CO." DOUBLE HANDGRIP PLATE – AMYTH. (RARE AND DESIRABLE; SATINY IRID.)**
- 600 204. **8" FENTON HOLLY I.C. SHAPED BOWL – MARI./ MOONSTONE (AN ODD VARIATION; HALF YES AND HALF NO)**
205. Fenton Prayer Rug 2 Handled 4 Sided Bon Bon – Mari./ Custard (very scarce, w/ a light marigold overlay)
206. **8-1/4" FENTON DRAGON AND LOTUS I.C. SHAPED BOWL – AMBER OPAL. (RARE COLOR FOR THIS PATTERN; OPAL. ON TIPS)**
207. **FENTON DRAGON AND LOTUS 8 RUFFLED BOWL – AMBER (EXCELLENT EXAMPLE OF A SCARCE ITEM)**
208. N Strawberry Flat Plate w/ Basketweave Ext. – Dk. Mari. (nice color and irid.; scarce)
209. **FENTON HOLLY FLAT PLATE – DK. MARI. (SUPER COLOR AND IRID.; REALLY NICE)**
210. 8-1/2"–9" Fenton Plaid I.C. Shaped Bowl – Dk. Mari. (very scarce pattern; nice satiny finish)
- 1350 211. **9"–9-1/2" FENTON AUTUMN ACORNS FLAT PLATE – GREEN (VERY RARE AND VERY DESIRABLE, W/ A BRIGHT SATINY FINISH)**
212. **FENTON DRAGON AND STRAWBERRY LG. FTD. RUFFLED BOWL – DK. MARI. (VERY SCARCE, W/ REALLY NICE COLOR AND IRID.)**
213. 8-1/2" Fenton Coral I.C. Shaped Bowl – Dk. Mari. (another very scarce and desirable item; great irid.)
214. 9" Fenton Ribbon Tie Low 3 in 1 Edge Plate – Blue (very scarce, w/ nice color and irid.)
215. 8-1/2" Fenton Peacock and Grape I.C. Shaped Bowl – Amyth. (scarce, w/ excellent irid.; super example)
216. **8-1/2" FENTON PEACOCK AND GRAPE I.C. SHAPED BOWL – RED/ AMBERINA (RARE AND DESIRABLE; SATINY, W/ NICE COLOR)**
217. Dugan Amaryllis Flared Ftd. Compote – Purp. (very scarce pattern, w/ a satiny finish)
218. Dugan Flowers and Frames Domed 10 Ruffled Bowl – Purp. (scarce, w/ nice color and irid.)
219. **WESTMORELAND DAISY SQUARES TIGHT CRIMPED EDGE SPITTOON SHAPED COMPOTE – MARI. (VERY SCARCE PATTERN IN A RARE SHAPE; NICE)**
220. N Beaded Cable Ftd. Ruffled Rose Bowl – Blue (scarce, w/ nice color and irid.)
221. 9" Tall Imperial Ripple Swung Vase – Purp. (super color and irid.; very attractive)
222. N Fruit and Flowers Stemmed Handled Bon Bon – Elec. Blue (really nice example, w/ bright irid.)
223. N Fruit and Flowers Stemmed Handled Bon Bon – Green (scarce; satiny)
224. 8–8-1/2" N Rosette Ftd. Deep 8 Ruffled Bowl – Green (very scarce color; really nice)
225. SURPRISE!
226. Dugan Question Mark Ftd. Plate w/ Ga. Peach and Puzzle Ext. – Purp. (very scarce color, w/ really nice irid.)
227. 7-1/2" Imperial Acanthus Deep Round Bowl – Purp. (scarce, w/ super irid.; nice)
228. 8-3/4" N Three Fruits Stippled 8 Ruffled Bowl w/ Ribbed Ext. – Elec. Blue (rare and desirable, w/ nice blue highlights)
229. 4-3/4" Imperial Grape Ind. Round Bowl – Purp. (super irid.)
- 800 230. **N HEARTS AND FLOWERS STEMMED RUFFLED COMPOTE W/ RIBBED EXT. – PURP. (VERY SCARCE, W/ REALLY NICE IRID., SUPER)**
231. N Leaf and Beads Ftd. Rose Bowl – Blue (scarce, w/ a nice satiny finish)
232. **9-1/2" TALL X 5-1/2" BASE IMPERIAL ZIPPER LOOP KEROSENE LAMP – DK. MARI. (RARE AND VERY DESIRABLE; GREAT COLOR)**
233. **N THREE FRUITS MEDALLION STIPPLED FTD. RUFFLED BOWL W/ MEANDER EXT. – AQUA OPAL. (RARE AND DESIRABLE; PASTEL FINISH)**

234. Imperial Grape Water Carafe – Helios Green (sorta scarce)
235. Imperial Diamond Lace Handled Water Pitcher – Purp. (scarce, w/ great irid.)
236. 8-3/4" Westmoreland Louisa Ftd. 6 Ruffled Bowl – P. Opal. (rare color for this pattern; nice)
237. 9" Fenton Three Fruits Flat Plate w/ Basketweave Ext. – Amyth. (scarce, w/ really nice irid.)
238. N G&C Handled Punch Cup – Lime Ice Green (scarce color)
239. Fenton Floral and Grape Tumbler – Green (rare color for this item)
240. Dugan Peacock at the Fountain Tumbler – Elec. Blue (great color for one of these)
241. **N CORN VASE W/ PLAIN BASE – WHITE (VERY SCARCE; FROSTY, W/ NICE IRID.)**
242. **N DAISY AND DRAPE FTD. FLARED VASE – AQUA OPAL. (RARE AND DESIRABLE, W/ A TOUCH OF BUTTERSCOTCH)**
243. **825 N DAISY AND DRAPE FTD. FLARED VASE – ELEC. BLUE (RARE AND VERY DESIRABLE; GREAT COLOR AND IRID.)**
244. 8" Dugan Circle Scroll Swung Vase – Dk. Mari. (very scarce, w/ great color and irid.)
245. **12" TALL X 3" BASE FENTON FINE RIB SWUNG VASE – RED W/ RED STREAKS (RARE VARIATION IN A TOUGH SIZE; DARK)**
246. 15" Tall x 4-1/4" Base Fenton Rustic Mid Size Swung Vase – Amyth. (nice satiny finish)
247. 16" Tall x 4-1/4" Base Fenton Rustic Mid Size Swung Vase – Amyth. (about the same as above)
248. 16" Tall x 4-1/4" Base Fenton Rustic Mid Size Swung Vase w/ T.C.E. – White (very scarce color in this size; nice irid.)
249. 16-3/4" Tall x 4-1/2" Base Fenton Rustic Mid Size Swung Vase – Amyth. (very scarce and nice)
250. 16" Tall x 4-1/4" Base Fenton Rustic Mid Size Swung Vase w/ T.C.E. – Blue (very scarce and nice)
251. 14-3/4" Tall x 4-1/4" Base Fenton Rustic Mid Size Swung Vase w/ T.C.E. – Mari. (nice color and irid.)
252. 16" Tall x 4-1/4" Base Fenton Rustic Mid Size Swung Vase – Dk. Mari. (very nice color and irid.)
253. 16" Tall x 3-1/2" Base Fenton Fine Rib Mid Size Swung Vase – Blue (nice satiny irid.)
254. 17" Tall x 3-1/2" Base Fenton Fine Rib Mid Size Swung Vase – Blue (nice color and irid.)
255. Jenkins Cut Flowers Lg. Cylinder Vase – Dk. Mari. (scarce; a nice dark example)
256. 13-1/2" Tall x 3-3/4" Base N Tree Trunk Mid Size Swung Vase w/ Plunger Base – Amyth. (rare variation, w/ a satiny finish)
257. 13-1/2" Tall x 3-3/4" Base N Tree Trunk Mid Size Swung Vase w/ Plunger Base – Green (rare color for this variation; satiny)
258. 12-3/4" Tall x 4-3/4" Base N Tree Trunk Mid Size Swung Vase – Amyth. (very scarce, w/ a satiny finish)
259. 14" Tall x 4-3/4" Base N Tree Trunk Mid Size Swung Vase – Green/ Mari. (very scarce; green w/ a heavy mari. overlay and a satiny finish)
260. Surprise!

Note: There may be a few additional items to be sold with this listing – you'll be aware of this by Auction time, if you're present.

FOR THE RESULTS OF THIS OR ANY BURNS AUCTION SERVICE AUCTION SEND A S.A.S.E. AND \$3.00 (INCLUDE NAME OR DATE OF AUCTION) TO:

EMMA TILTON
P.O. BOX 273
GNADENHUTTEN, OH 44629

VISIT US ON THE WEB!

www.woodsland.com/burnsauction
for pictures, complete listings and upcoming auctions



Lot #44



Lot #'s 39, 41, 40



Lot #51



Lot #52



Lot #30



Lot #153



Lot #28



Lot #25



Lot #29

BURNS

AUCTION SERVICE
P.O. BOX 608 • BATH, NEW YORK 14810

A.C.G.A.
Convention Auction
July 13, 2001
Greensboro, North Carolina

First Class Mail
U.S. Postage
PAID
Eugene, Oregon
Permit No. 305



Lot #22

LEE MARKLEY
BOX 306
MENTONE IN 46539

