

CARNIVAL GLASS AUCTION

with LIVE TELEPHONE BIDDING



The Holiday Inn

Carlinville, Illinois

(Exit #60 off of I-55 on the west side of the road.)

Just 30 miles south of Springfield, IL
and 60 miles north of St. Louis, MO.)

Call (800) 322-7546

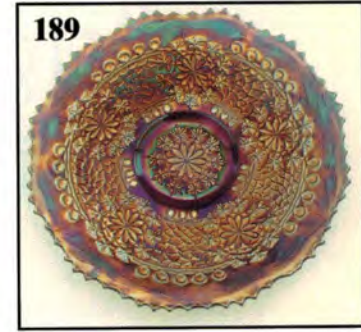
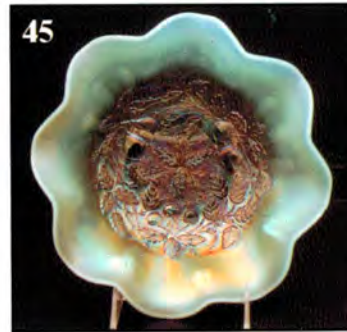
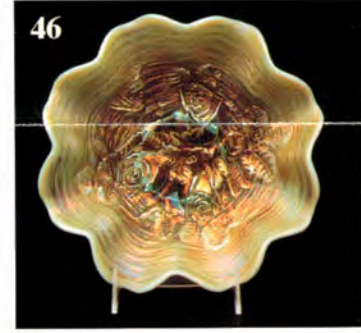
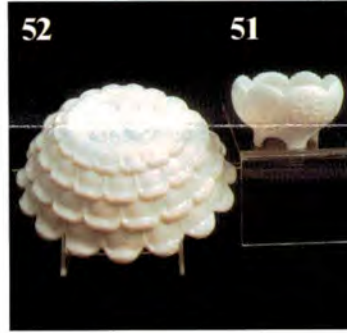
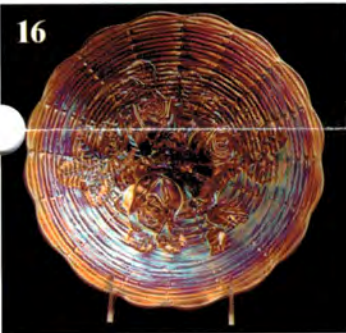
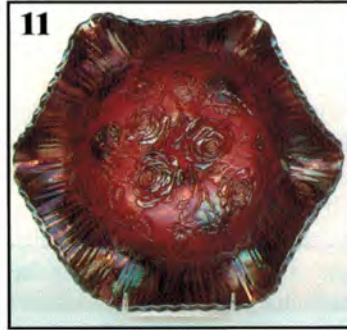
for Reservations by June 15th and ask to
be put in with the Ayers Auction Block of
Rooms for a rate of \$64.50+ tax.



Saturday, June 30, 2001

Beginning at 9:30 A.M.

Preview: Friday 5:00 - 7:00 P.M.
and Saturday 8:00 - 9:30 A.M.



Hello Folks...It's time again for another auction of rare and unusual items. We will be selling a partial collection of Alma & Jim Ricketts from Missouri and an assortment of beautiful glass from around the world. Once again we will be highlighting some of Europe's finest glass. We welcome each and every one of you to our sale, and if you can't make it we want you to check out our LIVE Telephone Bidding and Absentee Bidding. Have a wonderful summer and may all of your Champagne Wishes and Carnival Glass Dreams will come true.



CARNIVAL GLASS AUCTION

Saturday, June 30, 2001

Beginning at 9:30 A.M.

LIVE TELEPHONE BID AND WRITE-IN BID POLICIES

1. Live Telephone bids can be arranged by sending the numbers of the item(s) and your name, address, home phone number and the phone number where you can be reached on the day of the auction, Sat. June 30, 2001, during the hours the auction will be occurring, CST to David or Amy Ayers.
2. Write-in (Absentee bids will be accepted by sending the numbers of the item(s) desired and the amount bid on each to: Ayers Auction Service, P.O. Box 320, Tremont, IL 61568-0320.
3. All Absentee bids and arrangements to participate in Live Telephone bidding may also be done with David or Amy Ayers over the telephone: (309) 925-3115, or by e-mail to: ayers@dpc.net.
4. There will be a \$5.00 handling charge for each successful absentee bid. Shipping and insurance charges are additional. Be aware, there will be a \$5.00 charge per phone call placed to you during the auction to participate in Live Bidding. This cost is in addition to handling, shipping, and insurance charges. You will be billed for each phone call, even if you are not the successful buyer. We ask that you do not tie up the telephone lines by speaking at length with the staff of the Auction Service prior to the completion of your Live bidding. The staff will have multiple calls to complete and your cooperation is appreciated.
5. All successful bidders will be notified by a phone call from David or Amy Ayers 1-3 days after the auction.
6. If interested in placing an absentee bid or participating in the Live Telephone bidding you must contact David or Amy N.L.T. Monday, June 25, 2001. Bids received after this date may not be carried out.
7. Please place absentee bids in the following increments: \$1 - \$300 use \$5.00 increments; \$300 & up use \$25.00 increments.
8. If you do not receive an item that sold for less than your absentee bid, assume we cancelled your bid because the piece of glass had below average color, manufacture problem, damage, or was not listed correctly.
9. To receive a price list for this auction send \$3.00 and a SASE to the above address. (Make checks payable to Amy Ayers.)

Presented by:

Ayers Auction Service

Licensed Auctioneer,

David L. Ayers

Illinois Auctioneer License

No. 041000583



To see more color pictures, visit our website: <http://www.woodland.com/ayers>

1. Marigold--Late Waterlily & Cattails Tumbler. Nice example.
2. Green--N Sunflower 7" ruffled Bowl. Multicolored example.
3. **Amber--Riihimaki (Finland) Flashing Star Water Pitcher. Super rare but does have a chip on the base. Who cares? Your buying rarity.**
4. Mar--Imperial Tiger Lily Water Pitcher. Awesome example.
5. M--Crown Crystal (Australia) Butterfly Bush & Flannel Flowers large size ICS Compote. Wonderful example.
6. Dark Marigold--Crown Crystal Butterfly Bush & Xmas Bells small size ICS Compote. Perfect.
7. BA--Crown Crystal Butterfly Bush small size ICS Compote. Super radium example of Australian glass.
8. BA--Crown Crystal Butterfly Bush ruffled small size Compote. Another super example.
9. **BA--Crown Crystal Australian Swan 9" ruffled Bowl. Awesome radium example.**
10. M--Crown Crystal Magpie 9" ruffled Bowl. Nicely iridized.
11. **Rare Red--Imperial Luster Rose ruffled Fruit Bowl. Rare & desirable example with beautiful red iridescence.**
12. **Amy--N Peacock @ Fountain 7 Pc Berry Set. Wow! Super electric multicolored example. The best one I can remember.**
13. Amethyst--N Grape & Cable Dresser Tray. Sweet example.
14. G--Fenton Dragon & Lotus 9" Bowl w/ 3in1 edge. Nice.
15. Marigold--Jain Four Suits Tumbler. Rare
16. **Incredible Pastel Marigold--N Rose Show 9" Plate. Wow! This one is killer with sweet pastels. Absolutely breathtaking & flat.**
17. Choice (4 ea) M--Buzsac & File Tmlrs. All super & rare.
18. Choice (5 ea) B--Riihimaki (Finland) Grand Thistle Tumblers. Examples A, B, C, D are perfect, E has a ground mark on lip.
19. Green--Argentina Art Glass whimsy shaped Bowl w/ 2 small inlaid handles. Unusual in shape and highly iridized.
20. Choice(2 ea)M--Brockwitz (Germany) Curved Star Cathedral Chalice. Example A is pastel & B is dark. Both pretty neat.
21. M--Fenton Chrysanthemum 9" ruffled Bowl. Sweet.
22. Clambroth--Imperial Pillar Flute 7" Plate. Nice iridescence.
23. Amethyst--N Three Fruits Medallion 9" ruffled Bowl with 3 spat feet and Meander exterior. Slight fruit wear.
24. Blue--Fenton Wreath of Roses ruffled Compote.
25. Amethyst--Fenton Blackberry Bramble ruffled Compote.
26. PO--Dugan Single Flower 9" deeply rfd Bowl w/ plain int.
27. PO--Dugan Single Flower Framed 8" tight crimped Plate w/ Smooth Rays interior.
28. G--N Grape & Cable 8" rfd Bowl w/ Basketweave exterior.
29. Dark Marigold--Fenton Grape & Cable 8" ruffled Bowl w/ collar base. Stretchy, neat iridescence.
30. B--Fenton Grape & Cable 8" rfd Bowl w/ 3 spade ft. Nice.
31. Amber--Imperial Luster Rose 8" rfd Bowl, small lip ding.
32. Violet B--Fenton Blackberry Spray Hat w/ 2 sides up. Nice.
33. Purple--Imperial Diamond Ring 9" ruffled Bowl.
34. Smoke--Imperial Diamond Ring 9" ruffled Bowl.
35. Marigold--Imperial Diamond Ring 9" ruffled Bowl.
36. Marigold--Imperial Acanthus 8" ruffled Bowl. One of the better colored examples I have seen, but flaked on it's edge.
37. B--Fenton Sailboats 6" ruffled Bowl w/o interior iridization. The exterior is the Orange Tree pattern and is nicely iridized. Unusual piece.
38. Russet Green--N Thin Rib 10 1/2" Vase w/ 3" base.
39. **Rare Vaseline--Fenton Flute 10" Vase. Nice color from top to bottom. Internal manufacturer flaw.**
40. Scarce BA--Dugan Lined Lattice 10" Vase. Perfect ft& pretty.
41. Fiery A--N Wishbone 8" rfd ftd Bowl. Great highlights.
42. Sweet Marigold--Imperial Scroll Embossed Compote w/ Eastern Star exterior. Sweet example.
43. Amethyst--N Raspberry Compote w/ Basketweave exterior. Awesome example with lots of color.
44. **Dark M--N Harvest Poppy Compote. By far the best example I have ever seen. This rare compote has a very good strike, especially on the stippled background.**
45. **AO--N Three Fruits Medallion stpld 8 1/2" Bowl w/ spat ft. Super example w/ nice pastel highlights & Meander ext.**
46. **AO--N Rose Show 9" ruffled Bowl. Super pastel example. Perfect roses. Pastel examples are getting harder to find.**
47. **AO--N Peacock 9" rfd Bowl w/ butterscotch overlay.**
48. **Lavender--Fenton Peacock & Grape 9" collar base Plate. How many of these have you seen? Wow!! This plate has it all & is super rare to boot!**
49. M--Sweden Four Flowers 10" ruffled Bowl. It has rich marigold coloring and high radium finish.
50. Choice (2 ea) Scarce Blue--Sweden Four Flowers 10" ruffled Bowls with awesome radium iridescence. Both have the distinctive 10-pt ruffles, plain backs and ground bases.
51. **Rare Pearl--Eda (Sweden) Sunk Daisy 3 1/2" cupped in Rose Bowl. Lightly iridized. Hard to find color.**
52. **Rare Pearl--Eda (Sweden) Tokio 8" Bowl with light iridescence. This rare bowl has 2 small open bubbles on it's top lip. Hard to find in this color.**
53. Mar--Richard Thorne Vase. Maker is still unknown, as is it's original name. This is the 3rd reported vase in this distinguished pattern, the first was found by who else...but Richard Thorne. It has all the markings of being European, stands 6" tall with a 4" mouth and a 2 1/2" ground base. It has 8 sides, w/ 4 stacked divided circles per side. Very unique.
54. M--Eda (Sweden) Rex 8" Vase. Beautiful piece of European Glass but does have a couple of small flakes on it's base.
55. Blue--Brockwitz (Germany) Northern Lights 8" cupped Bowl. Here is a bowl that has seen some history, and survived to tell about it. It has minor wear on it's lip and an occasional flake in the geometrical pattern, but if it could speak, I bet it could tell some great German tales.
56. Blue--Brockwitz Rose Garden 5" Rose Bowl. Tiny flake on lip, otherwise exceptional.
57. Marigold--Brockwitz Rose Garden 6" Bowl. Minor wear on geometrical pattern. Still nice.
58. Amethyst--Mlbg Diamonds Tumbler.
59. Amethyst--Dugan Grapevine & Lattice Tumbler.
60. Marigold--Dugan Cosmos 9" ruffled Bowl.
61. Amy--Fenton Thistle 8" Bowl. Couple pinheads on CRE.
62. Rare Lavender--Fenton Thistle 8" Bowl w/ 3in1 edge. Sweet highlights on this scarce colored bowl.
63. Green--Fenton Thistle 9" ruffled Bowl. Satin finish.
64. Dark Marigold--Imperial Morning Glory 8" Bud Vase with 2 1/2" mouth & base. Cool.
65. Helios Green--Imp. Ripple 9" whimsy Vase. Mouth of vase is shaped into a pouring spout. Neat example.
66. Celeste Blue--Dugan Swan. Couple small chips on rim.
67. Marigold--Fenton Holly 9" Plate. Nice dark example. Couple scratches, but pretty.
68. M--Fenton Butterfly & Berry 7" CRE Vase. Good example.
69. A--Mlbg Blackberry Wreath 8 1/2" Bowl w/ 3in1. Nice.
70. Violet B--Fenton Ribbon Tie 9" Bowl w/ 3in1. Scarce color.
71. Olive Green--Imperial Ripple 6" squatty Vase.
72. Marigold--Fenton Rustic 6" squatty Vase.
73. **Blue--Dugan Peacock @ Fountain 7 Pc Water Set. Matches pretty well.**

74. Purple--Dugan Petal & Fan 6" ruffled Sauce. Electric golds, blues, & purple highlights.
75. Blue--Fenton Holly JIP Hat w/ tight crimped edge.
76. Blue--Dugan Peacock @ Fountain Tumbler.
77. Purple--Imperial Diamond Lace Tumbler w/ super duper multicolored electric iridescence. Wow!
78. **Ultra Rare Teal/Green--Eda (Sweden) Sunk Daisy 5" ftd Bowl with upright edge. Now this is the ultimate find. Has normal foot roughness. It is ultimately the rarest European piece ever reported.**
79. **Very Rare Purple--Eda (Sweden) Sunk Daisy Rose Bowl. Wonderfully iridized and a real treat.**
80. B--Eda Three Footer (aka Tre Fötter) 8" ruffled Bowl. It has wonderful multicolored and radium iridescence.
81. B--Brockwitz (Germany) Curved Star 7 1/2" cylinder Vase. Multicolored & pretty. Insignificant ft wear.
82. Blue--Brockwitz Curved Star 9 1/2" cylinder Vase. Although this has two tiny flakes near it's base, it's beautiful iridescence makes this piece sweet.
83. Choice (2 ea) M--Eda Kulor 8" Vases. Identical in every way except for a slight shade difference, both exquisite.
84. Purple--N Tree Trunk 15 1/2" Funeral Vase. Nice multicolored example w/ 5" base and 8" mouth. Awesome!!
85. Purple--N Tree Trunk 13" midsize Funeral Vase. Has a very dark base and lots of color highlights.
86. Purple--N Thin Rib 12" midsize Vase with 4 3/4" base and 6" mouth. Flake on bottom of base.
87. **Smoke--Imperial Hobstar Nu-cut 10" Vase. This is the old one with great color. Scarce & very desirable.**
88. **Emerald G--N Singing Birds Pitcher w/soft satin highlites.**
89. Marigold--N Oriental Poppy 5 Pc Water Set. Nice matched set with pinks & purple highlights.
90. M--Imperial pair of Premium Candlesticks.
91. Sapphire--Fenton Florentine pair of 8" Candlesticks. Nice.
92. **Deep Blue--N Grape & Cable 8 Pc stippled small Punch Set. Incredible colors flowing from this rare and desirable punch set which matches quite well. Wow!! One cup has small nick on base mold line, been there since it was made.**
93. Amethyst--N Grape & Cable 10" Salad Bowl w/ PCE and Basketweave exterior. Super rare bowl with a tad bit of iridescence gone in center. Who cares? Find a perfect one.
94. **Purple--Cambridge Inverted Thistle Water Pitcher. Very scarce pitcher w/ nice color, does have 2 sm nicks on rim.**
95. **Choice (6 ea) Pur--Cambridge Inverted Thistle Tumblers. Above average iridescence. Super hard to find. Examples A, B, C, & D are perfect, but E & F have very small nicks.**
96. Marigold--Fenton Rustic 21" Big Boy Funeral Vase w/ 5" base and 7" mouth. Nice color, very small heat check in base.
97. **Super Cherry Red--Imperial Fishnet Vase in the Rose variation. Nice example with red iridescence.**
98. Scarce Smoke--Imperial Morning Glory mini 5 1/2" Vase. Smoke goes all the way down.
99. Smoke--Imp Rococco Vase. Super example w/ multicolors.
100. Blue Opal--Westmoreland Corinth 9" Vase. Scarce straight up shape.
101. Amber--Westmoreland Corinth 9" Vase. Very dark amber.
102. P--N Leaf Columns 7" Vase. Nice electric highlites all over.
103. Blue--N Poppy Pickle Dish. Has an array of colors.
104. **Blue--Fenton Captive Rose 9" Plate. Super colors.**
105. Dark Amber--Imperial Pansy flat Relish Tray. This looks like a dresser tray. Super duper color, for one of these.
106. **Killer Purple--Imperial Scroll Embossed 9" Plate. Wow! This is what dreams are made of.**
107. **Choice (2 ea) Pure BA--Argentina (Piccardo) Jewelled Peacock Tail 7 1/2" Vases. Wow!! How rare are these? Some iridescence loss, but you can't tell because it is loaded w/ many colors. Super Rare**
108. Choice (2 ea) M--Imp 474 Milk Pitchers. Both are super.
109. **Choice (2 ea) M--US Glass Co. Rising Sun Juice Pitchers. Both are excellent and dark. — 225**
110. Choice (3 ea) Blue--Lucile Tumblers. Rare. Examples A & B are perfect, C has mold roughness on base.
111. **Marigold--European Triple Diamonds 3 Pc Tumble Up Set. Great color and in great condition. Sweet as can be.**
112. M--Jain 9 1/2" Fish Vase. Color is even and super. Scarce.
113. **Ice Blue--N Tree Trunk 11" standard Vase. Wow! Loaded w/ pastels. Neat example & one of the better ones I've seen.**
114. AO--N Beaded Cable Rose Bowl w/ butterscotch overlay. Pretty example but has one no harm small flake on one foot.
115. Ice Blue--N Peacock @ Fountain sugar Bowl w/o lid. Who has the lid for this fantastic pastel piece?
116. B--N Embroidered Mums 8 1/2" rfld Bowl w/super highlites.
117. **Ice Blue--N Embroidered Mums 8 1/2" ruffled Bowl. Wow!! Has got to be the best one I've ever seen.**
118. White--N Hearts & Flowers 9" rfld Bowl. Pastel & frosty.
119. Ice Blue--N Hearts & Flowers Compote. Sweet example.
120. Blue Opal--Westmoreland Daisy Wreath 8" rfld Bowl. Satin
121. Rare Green--Omnibus Tumbler. Rare, Rare Color. — 150
122. B--Riihimaki Tiger Lily Tumbler. Good color all the way.
123. Choice Purple--N Springtime Table Set. A) Butterdish, has small flake on base; B) Creamer, perfect; C) Sugar, no lid but perfect; and D) Spooner, roughness on base from mold.
124. M--Fenton Horse Medallion 7 1/2" Plate. Rare, flat & super
125. Rare Purple--Imperial Grape 5" Nut Bowl. Silvery iridescence but your buying rarity here.
126. Marigold--N Singing Birds Mug. Nice dark example.
127. Marigold--Fenton Dragon & Lotus 9" ruffled Bowl.
128. Marigold--Fenton Peacock & Urn 9" ruffled Bowl.
129. Amethyst--Fenton Holly 8 1/2" Bowl w/ 3in l edge. Great.
130. Mar--4 Shot Glasses. One is flashed & three are carnival.
131. Red--Joe St. Clair unridized Shot Glass. Rare.
132. Amethyst--Mlbg Swirled Hobnail Rose Bowl. Scarce shape.
133. Amethyst--Mlbg Holly Bon Bon. Nice radium example.
134. PO--Dugan Wide Rib 7" spitoon shaped Vase.
135. Clambroth--Fenton Ftd Fine Rib 6" Vase. Nice pastel colors.
136. **Dark Marigold--Fenton Horse Medallion ftd Nut Bowl. Super example with stretchy iridescence.**
137. **M--Fenton Holly 7 1/2" Nut Bowl. Rare shape, nice color.**
138. Yellow--Diamond & Fan Creamer. Fantastic example.
139. Purple--N Flute Toothpick Holder, chipped.
140. Amethyst--Westmoreland Checkerboard Goblet. Common small flakes in geometrical pattern.
141. A--Fenton Peacock & Urn 8 1/2" ICS Bowl. Nice & satiny.
142. **Violet--N Nippon 8 1/2" PCE Bowl. Nice rainbow effect on a rare base color.**
143. Amethyst--N Grape & Cable 7 3/4" Plate w/ Basketweave exterior & green iridescence. Neat looking.
144. **G--N Good Luck 8 1/2" PCE Bowl. Nice satiny highlite**
145. **BA--Dugan Fisherman's Mug. Awesome, rare color.**
146. Vaseline--Fenton Strawberry Bon Bon. Nice.
147. Choice (2 ea) Purple--N Acorn Burrs Punch Cups.
148. Choice (4 ea) Green--N Acorn Burrs Punch Cups. One cup with flake on berry.
149. Green--N Wishbone 8" ftd ruffled Bowl. Satin highlites.

150. **Blue--Eda (Sweden) Moller 8" Rose Bowl. Beautiful & colorful, but w/ a few teeny pinheads in geometrical design.**
151. Marigold--Eda Moller 8" Rose Bowl. Could be a twin to the blue bowl above in beauty, with dark coloring, and tiny pinheads. Gorgeous.
152. Blue--Brockwitz (Germany) Star & Hobs 7 1/2" oval Jardiniere. Multicolored iridescence and beautiful design.
153. **Blue--Brockwitz Charlotte Compote. This is the first perfect example reported, named by Sweden's own Charlotte Eisensoe and is a multicolored beauty.**
154. Marigold--Riihimaki (Finland) Western Thistle 5" Vase. Great coloring, but has two sm flakes on underside of lip. Pretty.
155. Blue--Brockwitz Curved Star round stemmed Sugar with Headdress interior. Very colorful and a perfect example.
156. Marigold--Brockwitz Curved Star ruffled stemmed Sugar with Headdress interior. Gorgeous and also perfect.
157. Choice (2 ea) Marigold--Brockwitz Curved Star 4" Rose Bowls. Both have wonderful coloring, Headdress interior and are perfect examples.
158. M--Brockwitz Curved Star 6" Rose Bowl w/ Headdress int. It's intricate geometrical design is perfect & it is colorful.
159. Lt Marigold--N Fine Cut & Roses Rose Bowl. Perfect feet.
160. **Noniridized Vas--Fenton Dragon & Lotus 9" rfld Bowl.**
161. **Noniridized Vas--Fenton Stag & Holly 11" ftd Bowl. Rare**
162. PO--Dugan Four Flowers 10" ruffled Bowl. Nice example.
163. PO--Dugan Garden Path Variant 9 1/2" ruffled Bowl. Light peach coloring.
164. Blue--N Beaded Cable Rose Bowl. Super electric highlights but does have a couple nicks.
165. B--N Singing Birds Mug w/golds, purples, pinks and blues.
166. Dark M--Fenton Orange Tree Shaving Mug. Fantastic color.
167. Blue--Fenton Little Fishes 10" rfld ftd Bowl. Satiny & rare.
168. Marigold--Mlbg Peacock & Urn 9 1/2" ICS Berry Bowl. Manufacturer roughness on edge.
169. G--Mlbg Peacock & Urn Mystery 9" Bowl w/ 3inl edge.
170. Green--Imperial Beaded Bullseye 8 1/4" Vase.
171. BA--Crown Crystal (Australia) Lily 9" Vase with 4" base and 5" mouth.
172. Amethyst--Fenton Peacock & Grape 9" spat ftd Plate.
173. Green--N Three Fruits 9" Plate. Bruise in base.
174. Ice Blue--N Bushel Basket, 8 sided.
175. Celeste Blue--Dugan Swan. Nice dark color.
176. Ice Green--Dugan Swan. Great example.
177. **A--Fenton Blackberry mini Compote. Fantastic.**
178. **Dark Marigold--Dugan Amaryllis deep round Compote. Pretty pink highlights.**
179. Westmoreland Shriner's 1909 Louisville Tobacco Leaf Champagne Glass. Good color.
180. Westmoreland Shriner's 1902 San Francisco Black Bear Champagne Glass. Rare.
181. Westmoreland Shriner's 1911 Rochester NY Camel Rider Champagne Glass. Great color.
182. Marigold- Choice (2 ea) Perfume Atomizers.
183. Contemporary Marigold--Pair of Dove Candle Holders.
184. Unlisted Marigold--Panelled Tumbler w/ horseshoe on base. Kind of neat and different.
185. Unlisted M--Diamond-style Cologne Bottle w/perfect stopper
186. Marigold--Finger Candle Holder.
187. Amber--Stretch single Candle Stick Holder.
188. Marigold--N Grape & Cable 9" Vt Plate w/ Basketweave exterior. Super dark & super nice.
189. **Blue--Fenton Leaf Chain 9" Plate. Awesome with a nice stretchy effect.**
190. **BA--Fenton 8" Two Flowers deep Salad Bowl. Wow! Super radium finish. Rare shape & rare base color.**
191. B--Fenton 10" Two Flowers rfld ftd Bowl, multicolored.
192. B--Fenton 11" Two Flowers ftd low Bowl. Wonderful example. Very close to being a chop plate, w/ turned up edges.
193. Choice (2 ea) Purple--N Acorn Burrs Tumblers.
194. Choice (2 ea) Purple--Imperial Grape Tumblers.
195. Choice (4 ea) Blue--Fenton Butterfly & Fern Tumblers. Example A is standard size and B, C, and D are variants.
196. **Rare Lime G--N Singing Birds Tumbler. Rare & glows.**
197. Choice (2 ea) Green--N Singing Birds Tumblers.
198. Choice (3 ea) Green--N Acorn Burrs Tumblers.
199. Choice (3 ea) Green--Fenton Panelled Dandelion Tumblers. Example is perfect, but B & C have nicked bases.
200. **Choice (2 ea) Blue--Eda (Sweden) Rose Garden 5" oval Letter Vases. Both have multicolored iridescence, but each has one small flake at it's base & one has roughness on it's lip. Lovely still.**
201. **B--Brockwitz Rose Garden 7" cylinder Vase. Beautiful.**
202. **Marigold--Eda (Sweden) Floral Sunburst 6 1/2" tricornered Vase. Neat shape on this interesting vase.**
203. **Blue--Eda Floral Sunburst 6 1/2" Vase with flat topped flared mouth. High radium multicolored irid. Stunning.**
204. **B--Eda Grankvist 6 1/2" Rose Bowl. Even with it's age showing it's minor wear, this bowl is a unique find. Not reported outside of Sweden or in this color.**
205. Marigold--Brockwitz Asters 3 1/2" diminutive Rose Bowl. Although small, this cutie is highly desired. Beautiful coloring.
206. **Blue--Riihimaki (Finland) Starburst 4 1/2" Cuspidor. Has wear on pattern.**
207. Super M--Brockwitz Asters 8" Rose Bowl. Sweet & dark.
208. **Ultra Rare Teal/Green--Eda Sunk Daisy 8" Bowl. Rough feet, but holy cow, this is very rare.**
209. **M--Eda Kulor 6" Vase. Scarce & perfect condition**
210. B--Brockwitz Texas Tumbler. Super w/ good strong color.
211. Blue--Riihimaki Tennessee Star 7 1/2" Vase with unusual flared out top that is squared.
212. Smoky Blue--Riihimaki Starburst 3 1/2" Rose Bowl. Couple small nips in the geometrical pattern. Rare size.
213. Fantastic M--European Laurel & Ribbons Butterdish. Super.
214. M--European Dewhirst Berry Band Butterdish. A beauty.
215. M--Josef Inwald (Czech) Unlisted/Unnamed Compote w/ super pinks & purples. Does have a couple of flakes on the base, but here is rarity. Confirmation of this piece was provided by Glen Thistlewood.
216. **Amethyst--Mlbg Zig Zag 10" ruffled Bowl. High radium finish. One of the better examples.**
217. **G--Mlbg Fleur De Lis 10" ICS Bowlw/collar base. Scarce**
218. Choice (2 ea) Dugan Question Mark ftd Plates with Puzzle exterior. Example A is Marigold & B is White.
219. Marigold--Fenton Stag & Holly Lg Rose Bowl. Soft pastels
220. **Fiery Amethyst--N Good Luck 9" ruffled Bowl w/ ribbed back. Absolute killer stretchy electric highlights. Wow!**
221. P--Imp Star of David 8 1/2" rfld Bowl w/ electric blue irid.
222. **Amethyst--Imperial Pansy 9" low ruffled Bowl. One of the top 5 I have seen. Shazam!**
223. PO--Dugan Bells & Beads 7" ruffled Bowl. Nice.
224. Uniridized Custard w/ Green stain around edge--Fenton Lions 8" Plate. Neat & rare.
225. P--Dugan Wishbone & Spades 6" Plate.
226. Purple--European Four Flowers Vt 9 1/2" Plate w/ lavender highlights.

227. Green--Fenton Vintage 7 1/2" flat Plate.
228. Marigold--N Fine Cut & Roses Candy Dish. Foot chigger.
229. **Purple--N Grape & Cable small Fruit Bowl. Super example with lots of color.**
230. P--N Grape & Cable large Fruit Bowl. Massive glass with nice multicolored highlights.
231. **Powder Blue w/ M overlay--Fenton Grape & Cable Fruit Bowl w/ Persian Medallion interior. Odd base tint.**
232. **B--Fenton Bullseye & Beads 13" Vase. Super rare base color on a rare vase. Multicolored all the way down.**
233. M--Dugan Beaded Shell 7 Pc Berry Set. Nice matching set.
234. Marigold--Fenton Orange Tree ftd 6 Pc Berry Set. Typical roughness on some of the feet. Nice dark color.
235. Amethyst--Fenton Little Flowers 10" Bowl w/ 3in1 edge.
236. Purple--Dugan Jewelled Heart 11" deep ruffled Bowl with Rayed interior. Electric highlights inside but not even.
237. A--Mlbg Nesting Swan 9" ruffled Bowl. Great satiny finish.
238. Cherry Red--Fenton Grape & Cable 6 3/4" Bowl. Super color but has chip on base.
239. M--Imp Grape handled Basket. Old example w/ even color.
240. Clambroth--Imperial Waffle Block handled Basket.
241. G--Mlbg Blackberry Wreath 10 1/2" rfld Bowl. Base chip.
242. Blue--Fenton Vintage 9" ICS Bowl.
243. Amethyst--N Sunflower 9" ruffled spat ftd Bowl.
244. Aqua--Fenton Blackberry Spray square Hat. Nice & satiny.
245. Fiery A--N Three Fruits 9" PCE Bowl w/ Bsktweave ext.
246. Green--Fenton Peacock & Grape 8" ftd Bowl. Nice.
247. G--Fenton Peacock & Grape 9" rfld collar based Bowl. Great.
248. Ice Blue--N Fine Cut & Roses Candy Dish. Sweet pastels with good feet.
249. M--Fenton Persian Medallion 6" Plate. Nice.
250. B--Fenton Pinecone 6" Plate.
251. M--Fenton Pinecone 6" Plate. One tooth chipped.
252. Ceramic Peacock @ Fountain Pitcher w/ carnival type iridescent finish. Here is something a little different.
253. Mar--Dugan Wreath of Roses Rose Bowl w/ metal base.
254. Marigold--N Grape & Cable Cologne Bottle w/o stopper. Nice example. Who has the stopper?
255. Choice (3 ea) Blue--Tumblers. Example A is Grape & Gothic Arches, B is Stork & Rushes and C is Lattice & Grape.
256. Choice (2 ea) M--N Grape & Cable standard size Tumblers.
257. Choice (2 ea) Marigold--N Tumblers. A is Acorn Burrs, B is Grape Arbor. Both are super. Example B is pastel.
258. Choice (2 ea) M--Buzzsaw & File Goblets. Super rare.
259. Marigold--Imperial Flute & Cane Goblet.
260. Marigold--Imperial 474 Sherbert.
261. Amber--Cristalerias Piccardo (Argentina) Covered Candy Dish called Pomone. The top of this unique piece is shaped with multiple fruit and the base has a basket like appearance.
262. M--Fenton Knotted Beads 10" Vase w/ tight crimped edge.
263. M--Dugan Vining Twigs 7" ruffled Bowl. Pretty example.
264. White--Fenton Leaf Chain 9" ruffled Bowl w/ Bearded Berry exterior. Nice & frosty.
265. A--Fenton Holly 9" deep ruffled Bowl w/ amber iridescence.
266. **Red--Fenton Wide Panel Covered Candy Dish. Very Nice**
267. Red--Contemporary Bulbous-type Vase, 3" mouth & base.
268. Olive Green--N Russet Pair of 8" Candlesticks.
269. Marigold--Fenton Pair of matching 6 1/2" Candlesticks.
270. Blue--N Good Luck stippled 9" ruffled Bowl with rib back. Minor nicks between teeth.
271. **G--Fenton Plaid 9" rfld Bowl in a very scarce color.**
272. Marigold--Imperial Grape Punch Bowl only. Big & beautiful.
273. Green--Fenton Blackberry Spray ruffled Hat.
274. Purple--Dugan Cherries 3 ftd 9" ruffled Bowl.
275. Light Marigold--Fenton Peacock & Grape 9" ruffled Bowl with collar base and Bearded Berry exterior. Nice.
276. Dark Marigold--Fenton Peacock & Grape 8" round Bowl with 3 spat feet & plain back.
277. Blue--Fenton Peacock & Urn 9" ruffled Bowl. Satiny.
278. Green--Mlbg Cosmos 6" round Bowl.
279. Contemporary White--Decanter Bottle w/o stopper. Maker unknown.
280. A--Fenton Grape & Cable 8" ruffled Bowl w/ 3 spat feet.
281. Green--Mlbg Holly 9" ruffled satiny finished Bowl with uniridized Finecut Ovals reverse.
282. **Rare Lavender--Fenton Stag & Holly spat ftd ICS 7" Bowl. Nice & desirable.**
283. Purple--N Grape & Cable small size Fruit Bowl. Nice but does have one small flake on bottom of one foot.
284. White--Dugan Floral & Grape Water Pitcher. Rare example of a pretty pitcher. Small handle check, common with applied handles.
285. Blue--Fenton Orange Tree Hatpin Holder with gun metal gold, pinks, blues & rough feet.
286. Marigold--Curved Star Butterdish. This one has the interior pattern, one of the two types of butterdishes made in this pattern. Chipped edges.
287. M--Unlisted 7" ICS basketweave type Bowl. Never seen this pattern before. Has all the indications of being old. Neat.
288. **Ginger Ale--Stippled Rays 11" tricornered Bowl. This is one cool shape.**
289. Purple--Dugan Ski Star 11" ruffled Bowl w/ incredible electric blue iridescence. Does have a edge chip. Wow!! Killer!
290. Choice (2 ea) M--Under Trays. These came from Argenti and are both unique and unlisted.
291. **Marigold--Argentina Ribbed Band & Scales Decanter with perfect stopper. Very Scarce. First one to be reported. Has "NCP" on the bottom.**
292. Choice (2 ea) M--Argentina Advertising Ashtrays. Both say "Naranja Sacic Pomelo". Example A is great, B has wear.
293. Marigold over Moonstone--Westmoreland File & Fan Compote. Super example in a scarce color.
294. Lilac tinted Uniridized 3 handled stemmed Toothpick Holder. Rather cute in size, it's once gold gilding is mostly worn off.
295. Marigold--Large size flashed 12" Vase w/ 16 interior panels, a 7" mouth and a 5" base. Maker unknown.
296. Contemporary Marigold--3 Pc set consisting of 1 larger Double Leaf shaped Candy Tray & 2 matching small Single Leaf shaped Candy Trays.
297. Choice (2 ea) Tumblers--A is Grn N Raspberry Tumbler, chipped base & B is Blue Fenton Bouquet & Lattice, rim flake.
298. M--Imperial Flute Sugar, flake on rim.
299. Choice (2 ea) Amethyst Powder Jars w/o lids. A) Vintage & B) N Grape & Cable. Both are great. Who has the lids?
300. Contemporary Uniridized Sapphire B--Texas Alamo Centennial open Sugar 1836-1936 Commemorative.
301. Choice Contemporary Fenton Collectors Plates, all in original boxes, with wooden stands, and paperwork (except one). (12 ea) American Craftsman Plates--#4, #4, #4, #4, #6, #6, #6 #6, #7, #10, #10, #10. (7 ea) Christmas in America Plates--#1, #4, #4, #4, #6, #9, #9. (3 ea) Mother's Day Plates--#3, #8, #9. (1 ea) Red, (1 ea) Blue, and (1 ea) White American Independence Eagle Plates 1776-1976.

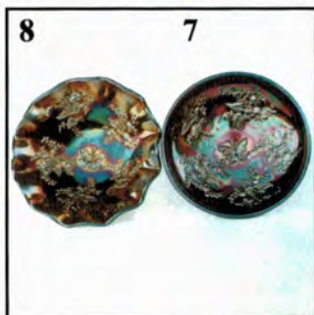
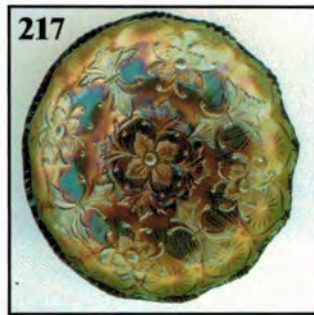
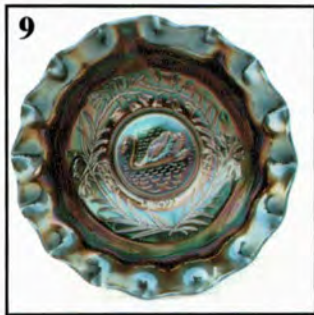
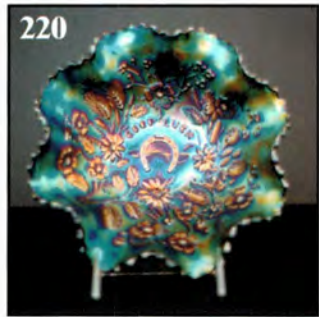
Saturday, June 30, 2001

CARNIVAL GLASS AUCTION

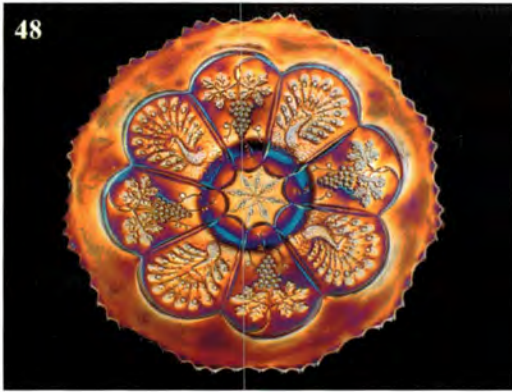
with LIVE TELEPHONE BIDDING

Presented by:

Ayers Auction Service



Ayers Auction Service
 PO Box 320
 Tremont, IL 61568-0320
 (309) 925-3115



CARNIVAL GLASS AUCTION

Saturday, June 30, 2001

Auction Begins: 9:30 A.M.

Preview: Friday 5:00 - 7:00 P.M. and
 Saturday 8:00 - 9:30 A.M.

Holiday Inn, Carlinville, Illinois

Call (800) 322-7546 for Reservations

LEE MARKLEY
 PO BOX 306
 MENTONE IN 46539-0306



CARNIVAL GLASS AUCTION
 with LIVE TELEPHONE BIDDING

Saturday, June 30, 2001 - 9:30 A.M.

