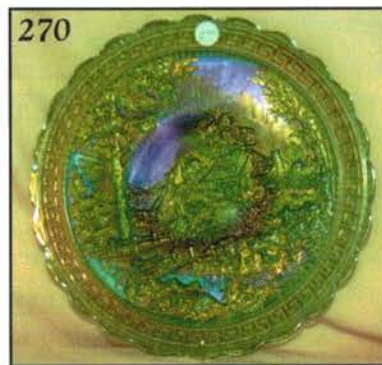
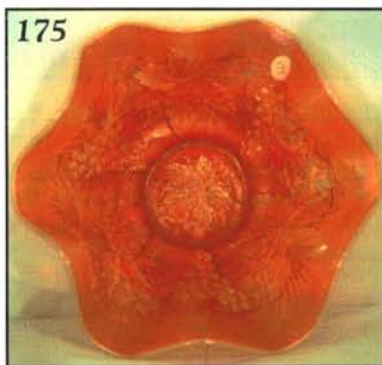
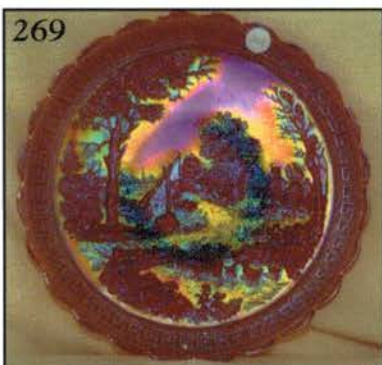


CARNIVAL GLASS AUCTION

Saturday, June 23, 2001 9:00 a.m., C.D.T.

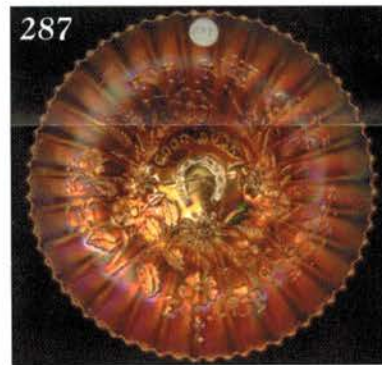
Harold Fortney Life-Long Collection

Life-Long Member of H.O.A.C.G.A.



Top:
308, 309,
310, 307

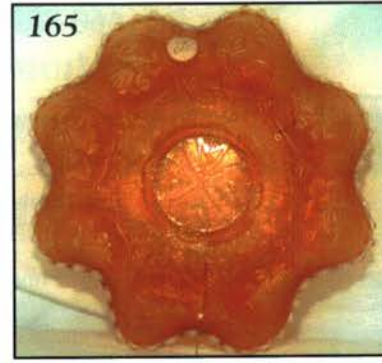
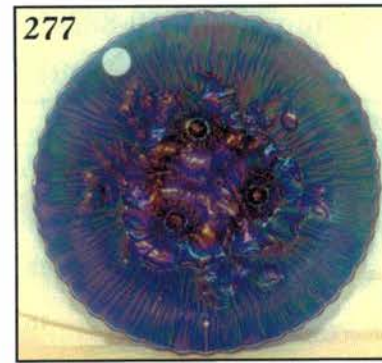
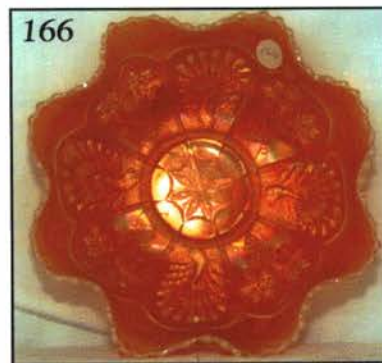
Bottom:
313, 319,
318, 320



Top:
261, 262,
263

Middle:
252, 248,
247

Bottom:
238, 239



Held Inside the Mickey Reichel Auction Center, Boonville, Missouri

Office: 660-882-5292 • Home: 660-882-5283

Direct e-mail: mreichel@undata.com

NEW WEB SITE ON: <http://www.yourauctionpage.com/reichel>



Held Inside the Mickey Reichel Auction Center

1 Mile North of I-70 on Hwy. 5, Exit 101, Boonville, Missouri • 20 Miles West of Columbia, MO on I-70

Preview Friday 12 p.m. - 6 p.m. and 7:30 a.m. - 9:00 a.m. Day of Auction



TERMS: Cash or Good Check, VISA and MasterCard accepted.



3% Handling Fee on all purchases except for payment of cash or check. Proper I.D. required.

WEBSITE: www.yourauctionpage.com/reichel

ABSENTEE BID POLICY:

WRITE IN BIDS: If you are unable to attend the auction, we will be happy to accept absentee bids which must be received by THURSDAY, JUNE 21, 2001. Don't Delay. E-Mail: mreichel@undata.com

FOR AUCTION PRICE RESULTS: Send \$3.00 and Large S.A.S.E. to 516 Third Street, Boonville, MO 65233-1536

PLEASE NOTE: There is a \$5 handling charge for each successful bid which will be added to the selling price for all write-in bids. This is in addition to the cost of postage, insurance and packing. Your write-in bid will be entered just as if you are present and bidding. Successful bidders will be notified in 1 to 3 days by the auctioneer (so be sure to include your phone number). Direct mail bids to Auctioneer Mickey Reichel, 516 Third Street, Boonville, MO 65233-1536. Terms: Cash or Check accepted with proper I.D. and Social Security Number and References. Announcements made day of the auction supercede all printed material. Not Responsible for Accidents or Sold Items.

No return on any items once they leave the Auction Center (No Exceptions).****

Call for additional information: 660-882-5292 days or 660-882-5283 evenings before 9:00 p.m.

FAX: 660-882-5292 (evening hours start FAX transmission after beep)

MAIL BIDS: Items are bid on in perfect condition with average or above iridescence OR as listed in the brochures. Bids will not be carried out when damage on an item has been found during the auction.

PEOPLE PRESENT AT AUCTION ARE RESPONSIBLE FOR FINDING ANY PINHEADS, WEAR, SPOTTINESS, MANUFACTURER'S DEFECTS OR ANY OTHER MINOR FLAWS, ETC. *****

NOTE: Read each line, as we have accentuated the type of no particular piece, all are special.

Make Reservations EARLY at one of these local motels:

Days Inn: 660-882-8624 • Comfort Inn: 660-882-5317 • Super 8: 660-882-2900

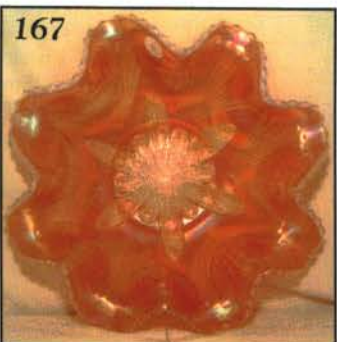
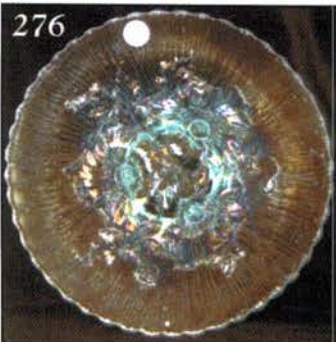
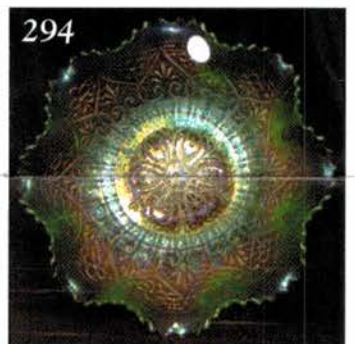
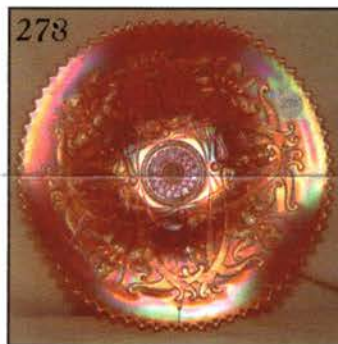
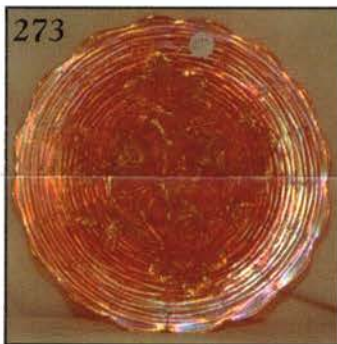
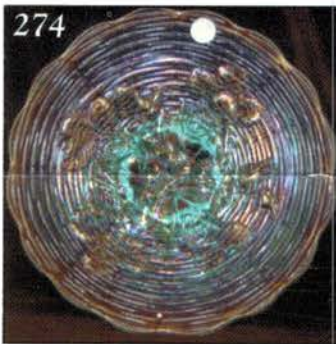
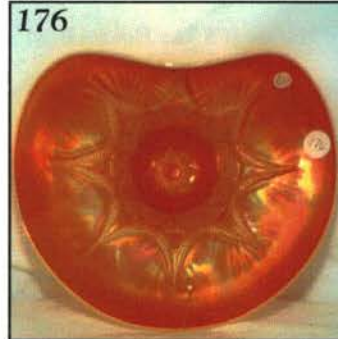
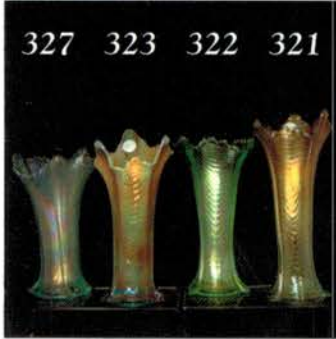
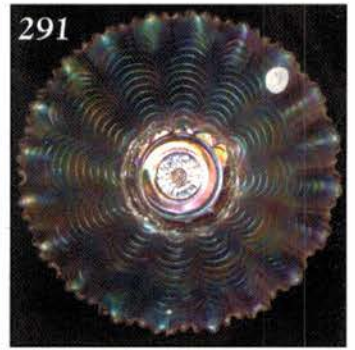
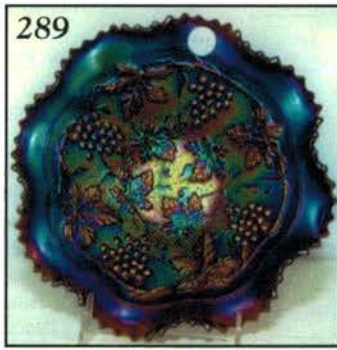
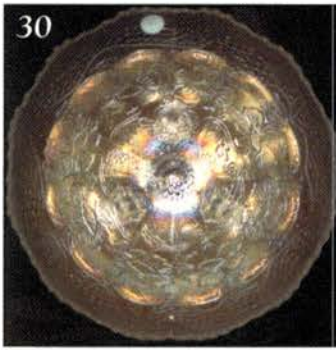
Auction Consists of Rarity, Great Irid. and Variety

THANK YOU FOR ATTENDING TODAY

1. M - 16½" Imp. Ripple Vase - 3¼" Base
2. Unusual G - 15" Imp. Ripple Vase - 3¼" Base That Glows!
3. Unusual G - 14½" Imp. Ripple Vase - 3⅞" Base and It Glows
4. Clear - 12½" Imp. Ripple Vase - Clambroth Overlay
5. G - 12¼" Imp. Ripple Vase - 3⅞" Base
6. Smoke - 12¼" Imp. Ripple Vase - 3⅞" Base - Beautiful Irid!
7. Rich Amber - 10¼" Imp. Ripple Vase - Outstanding Example
8. P - 11" Imp. Ripple Vase - Electric Highlights
9. Aqua - 10½" Imp. Ripple Vase - Beautiful Rarity
10. Electric P - 8½" Squatty Imp. Ripple Vase - 3½" Base - 5¼" Top
11. Rich M - 7" Squatty Imp. Ripple Vase - 3" Base - 5" Top

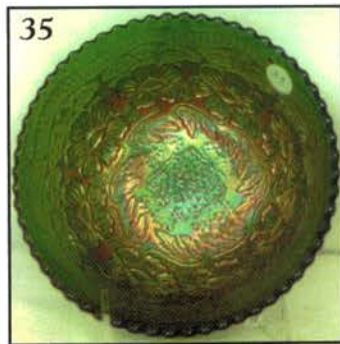
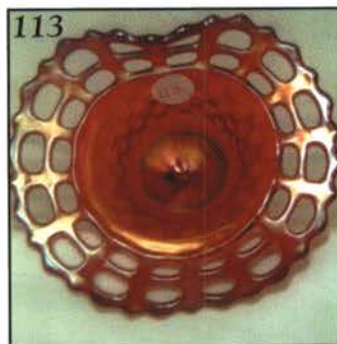
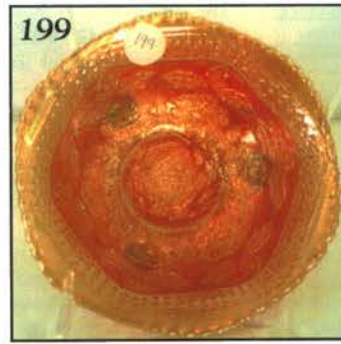
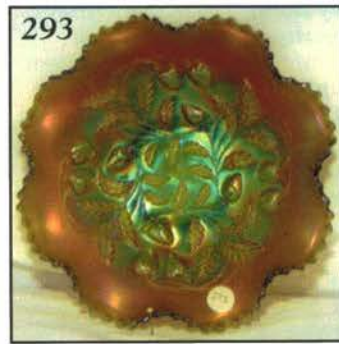
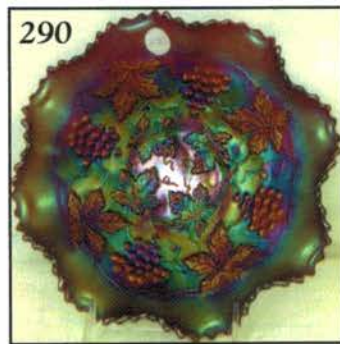
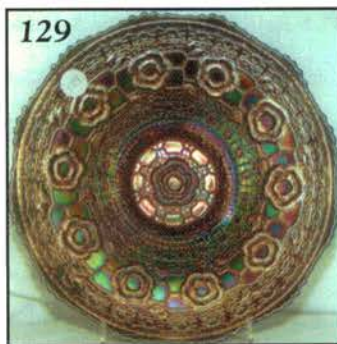
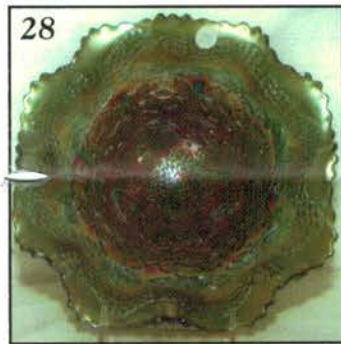
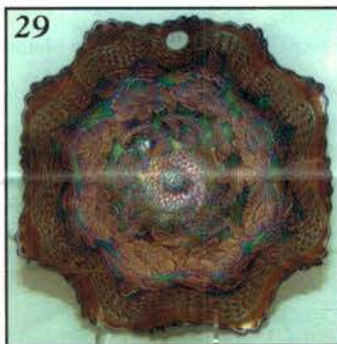
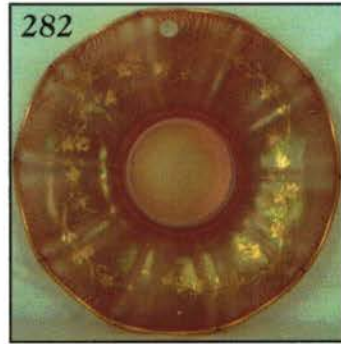
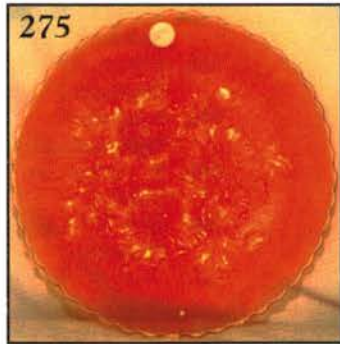
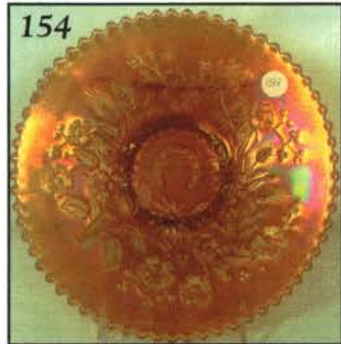
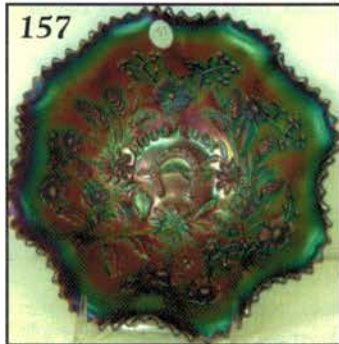
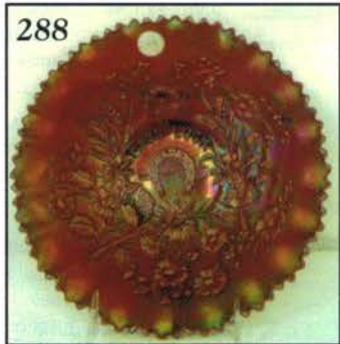
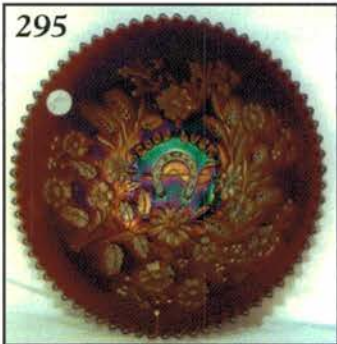
12. Rare M - Imp 8¼" 474 Vase - Radium Electric
13. Fabulous P - 11¼" Beaded Bullseye Vase - Electric Blues
14. Lime Vas. - 8" Squatty Beaded Bullseye Vase - 3½" Base - 5½" Top
15. MMG - 6½" Smooth Panels Imp. Vase - Super Overlay
16. Clam - 5" Smooth Panels Imp. Vase - Squatty, 4½" Opening - Scarce Size
17. PO - 6" Dugan Pinched Swirl Vase
18. Outstanding PO - 4¼" Dugan Wide Rib Squatty Vase - 3¼" Base - 6" Top
19. Deep P - 8" Circle Scroll Electric Vase
20. M - 8" Imp. Two-Handled Vase - Neat Find
21. W - 5" Dugan Big Basketweave Vase - Not Swung - Scarce
22. M - 5" Dugan Big Basketweave Vase - Not Swung - Scarce - Base Chip
23. G - 8" Fenton Long Thumbprint Vase - Very Pretty

24. Scarce A - 6" JIP Fenton Long Thumbprint Vase
25. **Powder B - Ball Ftd. Fenton 9½" Sq. 8-Ruffle Deep Two Flowers Bowl - Smoky Blue?**
26. B - Ball Ftd. Fenton 9¼" Sq. 8-Ruffle Deep Two Flowers Bowl
27. **Rich M - Ball Ftd. Fenton 9" Sq. 8-Ruffle Deep Two Flowers Bowl - Beauty**
28. Rare G - Ball Ftd. 10¼" Fenton Sq. 8-Ruffle Flared Two Flowers Bowl
29. **Deep B - Ball Ftd. 11½" Fenton Low, Sq. 8-Ruffle Two Flowers Bowl - WOW!**
30. Rare W - Ball Ftd. 10¼" Fenton ICS Two Flowers Bowl - Few Known
31. **Lime Vas. - Ball Ftd. 11" Fenton ICS Two Flowers Bowl - Few Known**
32. Scarce P - Ball Ftd. 10½" Fenton ICS Two Flowers Bowl - Gorgeous
33. **M - 10½" Ball Ftd. Fenton ICS Two Flowers Bowl - Blues and Pinks**
34. Dark P - 7" Rd. Spat. Ftd. Fenton Two Flowers Nut Bowl - Neat Shape
35. **Emerald G - 7" Rd. Spat. Ftd. Fenton Two Flowers Nut Bowl - RARE**
36. B - Flared 7½" Rd. Spat. Ftd. Fenton Two Flowers Bowl
37. **M - Flared 7¼" Rd. Spat. Ftd. Fenton Two Flowers Bowl**
38. Beautiful M - 9" Collar Base Sq. 8-Ruffle Peacock and Grape Bowl
39. **Lime Vas. - 9" Collar Base Sq. 8-Ruffle Peacock and Grape Bowl - Rare Color**
40. Great G - 9" Collar Base Sq. 8-Ruffle Peacock and Grape Bowl
41. **Soft M - 9" Collar Base Sq. 8-Ruffle Peacock and Grape Bowl**
42. Rich A - 9" Collar Base Sq. 8-Ruffle Peacock and Grape Bowl
43. **Dark B - 9" Collar Base Sq. 8-Ruffle Peacock and Grape Bowl**
44. Electric B - 8¼" Collar Base 8-Ruffle Peacock and Grape Bowl
45. **G - 8", 8-Ruffle Spat Ftd. Peacock and Grape Bowl**
46. B - 8", 8-Ruffle Spat Ftd. Peacock and Grape Bowl
47. **B - Collar Base 8" Rd. Peacock and Grape Nut Bowl - Base Chip**
48. Light M - Collar Base 8" Rd. Peacock and Grape Nut Bowl
49. **M - 7½" Spat Ftd. Rd. Flared Peacock and Grape Nut Bowl**
50. Scarce A - 9", 3 in 1 Edge Collar Base Peacock and Grape Bowl
51. **M - 8¼", 3 in 1 Edge Collar Base Peacock and Grape Bowl**
52. P - Imp. Grape Tumbler - Multi-Electric
53. **Smoke - Imp. Grape Tumbler - Multi-Electric**
54. G - Imp. Grape Tumbler - Pink Highlights
55. **M - Imp. Grape Tumbler - Rim Roughness**
56. Clam? - Imp. Grape Tumbler - Pinks, Blues, Greens
57. **P - Imp. Windmill Tumbler - Electric - Sm. Base Nick**
58. M - Imp. Windmill Tumbler - Radium Pinks and Blues
59. **Scarce IB - N Oriental Poppy Tumbler - Plain Int.**
60. Scarce W - N Oriental Poppy Tumbler - Plain Int.
61. **Lt. B Tinted Base - N Oriental Poppy Tumbler - M. Overlay**
62. Dark P - N Oriental Poppy Tumbler - Plain Int. - Multi-Electric
63. **A - N Oriental Poppy Tumbler - Plain Int. - Multi-Electric**
64. M - N Oriental Poppy Tumbler - Plain Int. - Pinks & Blues
65. **G - Fenton Paneled Dandelion Tumbler - Normal Ground Base**
66. B - Fenton Paneled Dandelion Tumbler - Normal Ground Base
67. **Scarce G - Fenton Butterfly and Berry Tumbler**
68. B - Fenton Butterfly and Berry Tumbler - Radium Electric - Choice A or B
69. **Fantastic Electric B - Milady Tumbler**
70. Scarce A - Milady Tumbler - Minor Base Nick
71. **M - Milady Tumblers - Choice A or B**
72. Rare G - N Peacock at Fountain Tumbler - Base Chips
73. **P - N Peacock at Fountain Tumbler - Rim Nick**
74. B - Dugan Peacock at Fountain Tumbler
75. **Stunning P - Imp. Tiger Lily Tumbler - Electric Blue Finish**
76. P - Chatelaine Imp. Tumbler - Outstanding - Normal Roughness
77. **P - Imp. Diamond Lace Tumbler - Rim Crack - Electric Irid.**
78. Pastel M - Vineyard Grape Tumbler - Blues and Yellows
79. **Cranberry Flashed - Flute #1 - Starred Base Tumbler**
80. G - N Greek Key Tumbler - Very Pretty
81. **B - N Peach Tumbler - Multi-Electric**
82. G - N Singing Birds Tumbler - Radium Finish
83. **Rare M - Interior Poinsettia Tumbler - Normal Ground Base**
84. Rare M - N Cherry and Cable Tumbler - Sorry, Rim Chip
85. **M - Miniature 4¼" Morning Glory Vase - 2½" Base - 3½" Top**
86. P - Miniature 5" Morning Glory Vase - Electric Irid.
87. **M - 6½" Imp. Morning Glory Vase**
88. Outstanding Smoke - 6½" Imp. Morning Glory Vase
89. **Scarce W - N Squatty 6¼" Fine Rib Vase**
90. W - 7½" Rustic Vase - Above Average Irid.
91. **Teal - Concave Flute 9" Vase - Tough One to Find**
92. M - 9½" Swung Butterfly and Berry Vase
93. **B - 9½" Swung Butterfly and Berry Vase - Electric Highlights**
94. Rich G - 10¼" Swung Butterfly and Berry Vase - Great Color & Irid.
95. **Helios G - Imp. 11¾" Parlor Panels Vase**
96. Outstanding M - 10" Imp. Parlor Panels Vase
97. **Outstanding M - 9½" Imp. Parlor Panels Vase**
98. Scarce M - N Daisy and Drape Vase - Cupped Top - Nice Example
99. **Super G - Fenton Fine Rib 12" Vase**
100. G - Fenton Fine Rib 12" Vase
101. **Sapphire - Fenton Fine Rib 12" Vase - Scarce Color!**
102. Yellow Amber - Fenton Fine Rib 10¼" Vase
103. **Powder B - Fenton Fine Rib 10" Vase**
104. **BA - Fenton Fine Rib 9½" Vase - Rare Find**
105. **Sapphire - Fenton Fine Rib 8½" Vase - Another Tough One**
106. Lav. - Fenton Fine Rib 9¼" Vase
107. **RED - Fenton Fine Rib 8¼" Vase - Base Crack**
108. RARE W - Fenton Diamond and Rib 9¼" Vase
109. **G - Fenton Diamond and Rib 12" Vase**
110. B - 11½" Long Thumbprint Hobnail Vase
111. **G - N Fine Cut and Roses Ftd. Rose Bowl - Normal Ft. Nicks**
112. Emerald G - Fenton 6", 2-Row, O.E., BW Hat - 2-Sides Up
113. **Great RED - 5¼" JIP, 2-Row, O.E. BW Hat**
114. Blue Opal - Westmoreland Mini Estate Sugar Bowl - Scarce



115. **Aqua Opal - Pastel N Beaded Cable Rose Bowl - Extra Nice**
116. Scarce Aqua - 7¼", 6-Ruffle Peacock and Dahlia Bowl
117. **Rare G - 6½" ICS Peacock and Dahlia Bowl**
118. P - Imp. Grape Wines - Choice A, B or C
119. **W - N Rd. Bushel Basket - Frosty!**
120. Pretty M - 8" ICS Collar Base Dragon and Lotus Bowl
121. **G - 8" ICS Collar Base Dragon and Lotus Bowl**
122. Scarce Amber - 8" ICS Collar Base Dragon and Lotus Bowl
123. **A - Spat Ftd. 7½" ICS Dragon and Lotus Bowl - Super Irid. & Scarce**
124. LGO - Spat Ftd. 8-Ruffle Dragon and Lotus Bowl - Lg. Chip on Foot
125. **M - Collar Base 9", 3 in 1 Edge Dragon and Lotus Bowl - Above Average**
126. M - Collar Base 9", 8-Ruffle Sq. Dragon and Lotus Bowl - Pinks, Blues and Yellows
127. **Radium G - 9½", 6-Ruffle Mlbg. Whirling Leaves Bowl - Super!**
128. M - Fenton 9¼" Peacock at Urn Plate
129. **B - Fenton 9" Captive Rose Plate - Above Average**
130. RARE Sapphire - N Thin Rib 13¼" Funeral Vase - 4¼" Base - 5¼" Top
131. **P - N Thin Rib 14¼" Funeral Vase - Extra Nice**
132. RARE Ice Green - N Thin Rib 12¾" Funeral Vase - Frosty Blues & Pinks
133. **Dandy G - N Thin Rib 12¾" Funeral Vase - Blues, Pinks & Yellows**
134. W - N Thin Rib 12¾" Funeral Vase - frosty Blues, Pinks, Greens - Scarce Color
135. **Deep B - N Thin Rib 12¾" Funeral Vase - Scarce Northwood Blue!**
136. M - N Thin Rib 13¼" Funeral Vase - Blues, Pinks & Yellows
137. **Radium Pastel M - N Thin Rib 12½" Funeral Vase - Luscious Blues & Yellows**
138. Russet - N Thin Rib 11" Vase - Above Average Irid.
139. **Rare Sapphire - N Thin Rib 10¾" Vase**
140. Rare Yellow Vas. - N Thin Rib 10¾" Vase
141. **B - N Thin Rib 10½" Vase - Radium Blues, Purples, Yellows**
142. G - N Thin Rib 10¼" Vase - Unusual Tri-Corner Base
143. **Rare Ice G - N Thin Rib 10" Vase - Seldom Offered**
144. W - N Thin Rib 10¼" Vase - Nice Find
145. **G - N Thin Rib 9½" Vase - Beautiful 5" Opening**
146. Pumpkin M - N Thin Rib 9½" Vase - 4½" Opening
147. **Russet - N Thin Rib 9" Vase - 4½" Opening**
148. Beautiful P - N Thin Rib 9½" Vase - 4" Opening
149. **Rare Smoke - N Thin Rib 9¼" Vase - 4¼" Sq. Opening**
150. Violet - 7¼" Squatty N Thin Rib Vase - 3½" Base - 4¼" Top
151. **CRYSTAL - Mlbg. Frosted Hobstar and Feather Tankard Pitcher**
152. **Electric P - Imp. Grape Decanter w/Stopper - Super!**
153. **P - N 9¼" Peacocks Plate - Rib Ext. - Electric Irid.**
154. Horehound - N 9" Good Luck Plate - BW Ext. - Factory Flattened Tip
155. **Clam - 9½" Leaf Chain Plate - Outstanding Example**
156. B - 8¼" N PCE Good Luck Bowl - Multi Electric
157. **Dark A - N 8-Ruffle Good Luck Bowl - BW Ext. - Scarce Vt. - Multi-Electric**
158. A - Ftd. 8½", 8-Ruffle N Wishbone Bowl - Enchanting Irid.
159. **Beautiful M - N Ftd. 8½", 8-Ruffle Wishbone Bowl - Rich Pinks and Blues**
160. Lav. - Fenton Flowers Rose Bowl - Scarce Color and Nice
161. **M - 9" Rib and Panels Blown Vase - Unusual Find**
162. Scarce M - Footed Prism Panels 9½" Vase
163. **Flashed M - 6" English Thistle Vase**
164. M - 9¼" Mold Blown Unnamed Vase - See Photo!
165. **PO - Collar Base 8¼" Sq. 8-Ruffle Dragon and Lotus Bowl - Outstanding**
166. **PO - Collar Base 8¼" Sq. 8-Ruffle Peacock and Grape Bowl - SUPERB!**
167. **PO - 10½" Dugan, 8-Ruffle, Petal and Fan Bowl - Great Pinks and Blues**
168. PO - 10½" Dugan, 6-Ruffle, Petal and Fan Bowl - Jeweled Heart Ext.
169. **PO - 9½" Scarce 8-Ruffle Collar Base Dugan Cherries Bowl - 1½" Opal**
170. PO - 6" Scarce 8-Ruffle Collar Base Dugan Cherries Bowl - Great Opal
171. **PO - 9½", 6-Ruffle Collar Base Dugan Cherries Bowl - 2" Opal!**
172. PO - 9" CRE Dugan Smooth Ray/Single Flower Bowl - 2½" Opal
173. **PO - 8¼", 10-Ruffle Smooth Int. Single Flower Bowl**
174. PO - 6½", 6-Ruffle Folding Fan Compote - Rich Opal - Great Find
175. **PO - Dugan 10¼", 6-Ruffle Heavy Grape Bowl - Very Rare Find**
176. PO - Dome Ftd 8¼" Ski Star Hand Grip Plate - Loads of Opal, Pumpkin Finish
177. **PO - Westmoreland 8" ICS Scales Bowl**
178. PO - 6½" Four Flowers Plate - BW Ext. - Extra Nice
179. **PO - 6½" CRE Ski Star and Compass Plate - Seldom Offered**
180. PO - 7½" Tri-Corner Dugan Beads and Flowers Plate - Rich Irid.
181. **PO - Spat Ftd. 8" ICS Peacock and Grape Bowl - Scarce Color!**
182. G - Spat Ftd. 8" ICS Peacock and Grape Bowl - Outstanding Irid.
183. **M - Spat Ftd. 8" ICS Peacock and Grape Bowl - Outstanding Irid.**
184. A - Spat Ftd. 7¼" ICS Peacock and Grape Bowl - Outstanding Irid.
185. **B - Collar Base 8½" ICS Peacock and Grape Bowl - Unusual Base Color - Renniger?**
186. Super G - Collar Base 8½" ICS Peacock and Grape Bowl - Emerald
187. **M - Collar Base 8" ICS Peacock and Grape Bowl - Great Irid.**
188. A - Collar Base 9", 8-Ruffle Sq. Peacock and Grape Bowl - Outstanding
189. **Aqua - Ball Ftd. 6", 6-Ruffle Two Flowers Bowl - Rare Color**
190. Yellow Vas. - Ball Ftd. 6", 6-Ruffle Two Flowers Bowl - WOW!
191. **Lime Vas. - Ball Ftd. 6", 6-Ruffle Two Flowers Bowl - Another Winner**
192. Powder B - Ball Ftd. 6", 6-Ruffle Two Flowers Bowl - Subtle Color
193. **Rich A - Ball Ftd. 6", 6-Ruffle Two Flowers Bowl - A Dandy**
194. Electric B - Ball Ftd. 6", 6-Ruffle Two Flowers Bowl - Sweet!
195. **B - Ball Ftd. 6", 6-Ruffle Two Flowers Bowl**
196. **RARE GREEN - Ball Ftd. 6", 6-Ruffle Two Flowers Bowl - What else can I say?**
197. **M - Ball Ftd. 6", 6-Ruffle Two Flowers Bowl**
198. M - Ball Ftd. 6", 6-Ruffle Two Flowers Bowl - Extra Nice Piece!
199. **M - Ball Ftd. 5¼", 6-Sided Two Flowers Bowl - One Of A Kind Shape**

- _____ 200. A - Collar Base 6", 6-Ruffle Two Flowers Bowl - One Of A Kind Shape?
- _____ 201. M - Collar Base 4½" Rd., 2" Deep Two Flowers Bowl - **Seen Another?**
- _____ 202. M - Collar Base 6¼" Rd., 3" Deep Two Flowers Bowl - Unusual Shape
- _____ 203. M - 7¼" Collar Base Rd. Two Flowers Bowl - **Greens and Yellows**
- _____ 204. M - 7¼" Collar Base Rd. Two Flowers Bowl - Blues and Pinks
- _____ 205. M - Collar Base 8¼" Sq. 8-Ruffle Two Flowers Bowl
- _____ 206. Lime Vas. - Ball Ftd. 9¼" Sq. 8-Ruffle Two Flowers Bowl - Extra Nice
- _____ 207. M - Ball Ftd. 9¼" Sq. 8-Ruffle Two Flowers Bowl - **Rich Yellows, Pinks**
- _____ 208. Scarce A - Ball Ftd. 10" Sq. 8-Ruffle Two Flowers Bowl - Outstanding
- _____ 209. B - Ball Ftd. 10" Sq. 8-Ruffle Two Flowers Bowl - **Electric Blues, Greens & Yellows**
- _____ 210. B - Ball Ftd. 9¼" Sq. 8-Ruffle Two Flowers Bowl - Blues and Pinks
- _____ 211. B - Ball Ftd. 9" Rd. Two Flowers Bowl - **Electric Greens and Blues**
- _____ 212. M - Ball Ftd. 10¼" ICS Scalloped Tips Two Flowers Bowl
- _____ 213. Scarce G - Spat. Ftd. 8", 8-Ruffle Two Flowers Bowl - **Lovely!**
- _____ 214. A - Spat. Ftd. 8", 8-Ruffle Two Flowers Bowl - Red and Blue Irid.
- _____ 215. M - Spat. Ftd. 8", 8-Ruffle Two Flowers Bowl - **Above Average**
- _____ 216. M - Ten Mums Tumbler - Extra Nice
- _____ 217. **Rich M - Crab Claw Tumbler - Roughly Ground Base**
- _____ 218. Radium M - Fenton Waterlily and Cattails Tumbler - Pink Highlights
- _____ 219. **Smoke/Lav. Tint - N Dandelion Tumbler - Super Item**
- _____ 220. G - N Dandelion Tumbler - Pinks, Greens, Yellows
- _____ 221. P - N Dandelion Tumbler - **Electric Blues and Purples**
- _____ 222. M - Cut Cosmos Tumbler - Scarce Pattern
- _____ 223. A - **Dugan Floral and Grape Tumbler - Radium Electric**
- _____ 224. Dark M - Imp. 474 Tumbler
- _____ 225. **Smoke - Rare N Grape Arbor Tumbler**
- _____ 226. P - Multi Electric Heavy Iris Tumbler - Base Nick
- _____ 227. M - Imp. Soda Gold Tumbler - **Way Above Average**
- _____ 228. P - Flute #2 Multi Electric Tumbler - Tiny Rim Flake
- _____ 229. **Pastel M - Dugan Maple Leaf Tumbler - Clambroth Look!**
- _____ 230. Outstanding P - N Acorn Burrs Tumbler - Base Cracked
- _____ 231. M - **Dugan Dahlia Tumbler - Pastel Pink and Blue Irid.**
- _____ 232. Scarce B - Blueberry Tumbler - Purples and Golds
- _____ 233. M - **Circle Scroll Tumbler - Outstanding Pinks and Blues**
- _____ 234. B - Blackberry Block Tumbler
- _____ 235. M - **Orange Tree Orchard Tumbler**
- _____ 236. B - Footed Orange Tree Tumbler - Feet Are A "10" - Outstanding
- _____ 237. **Pumpkin M - N 6¼" Squatty Tree Trunk Vase**
- _____ 238. Rare Ice B - N 6¼" Squatty Tree Trunk Vase
- _____ 239. **Ice G - N 6½" Squatty Tree Trunk Vase - Also Rare**
- _____ 240. G - N 6½" Squatty Tree Trunk Vase - Star Base - Alaskan Irid
- _____ 241. **Pastel M - N 6½" Squatty Tree Trunk Vase - Blues and Yellows**
- _____ 242. P - N 7" Squatty Tree Trunk Vase - 4¼" Top - 9 Protruding Hobs - Unusual
- _____ 243. **Electric B - N 7½" Squatty Tree Trunk Vase**
- _____ 244. A - N 7¼" Squatty Tree Trunk Vase - 5¼" Flared Top
- _____ 245. **Rare Sapphire - N 9¼" Tree Trunk Vase - 2¼" Interior Crack**
- _____ 246. Pumpkin M - N 10" Tree Trunk Vase - Very Nice
- _____ 247. **Rare Ice G - N 10¼" Tree Trunk Vase**
- _____ 248. W - N 10¼" Tree Trunk Vase
- _____ 249. **G - N 10½" Tree Trunk Vase - 3½" Top**
- _____ 250. G - N 10½" Tree Trunk Vase - 4½" Top
- _____ 251. **Electric B - N 10¾" Tree Trunk Vase**
- _____ 252. Ice B - N 11" Tree Trunk Vase
- _____ 253. **Pastel M - N 10¼" Tree Trunk Vase**
- _____ 254. B - N 10¼" Tree Trunk Vase
- _____ 255. **B - N 10¼" Tree Trunk Vase - Lighter Shade of Blue**
- _____ 256. Lav. Horehound - N 11" Tree Trunk Vase - 3½" Base-4½" Opening
- _____ 257. **Pastel M - N 11" Tree Trunk Vase**
- _____ 258. P - N 11¼" Tree Trunk Vase
- _____ 259. **Electric B - N 20" Plunger Base Tree Trunk Funeral Vase - 5¼" Base - 7½" Top**
- _____ 260. B - N 12½" Mid-Size Tree Trunk Funeral Vase - Multi-Electric
- _____ 261. **Ice B - N 12¼" Mid-Size Tree Trunk Funeral Vase - Rare Color**
- _____ 262. W - N 12⅞" Mid-Size Tree Trunk Funeral Vase - Scarce Color
- _____ 263. **Ice G - N 12¼" Mid-Size Tree Trunk Funeral Vase - Rare Color**
- _____ 264. G - N 12½" Mid-Size Tree Trunk Funeral Vase
- _____ 265. **M - N 13" Mid-Size Tree Trunk Funeral Vase**
- _____ 266. A - N 12¾" Mid-Size Tree Trunk Funeral Vase
- _____ 267. **P - N 12¾" Mid-Size Tree Trunk Funeral Vase**
- _____ 268. M - N 13¾" Mid-Size Tree Trunk Funeral Vase
- _____ 269. **Outstanding Amber - 10¼" Imp. Homestead Chop Plate**
- _____ 270. Rare G - 10¼" Imp. Homestead Chop Plate - Near Emerald
- _____ 271. **B - 9" Fenton Peacock at Urn Plate - Hot Pattern!**
- _____ 272. Scarce Ice B - N 9¼" Hearts and Flowers Plate - Very Nice
- _____ 273. **Great M - Flat 9½" N Rose Show Plate**
- _____ 274. Scarce Ice B - Flat 9½" N Rose Show Plate
- _____ 275. **M - 9½" N Poppy Show Plate - Pinks, Greens and Yellows**
- _____ 276. Ice B - 9¼" N Poppy Show Plate - Blues, Golds, Pinks
- _____ 277. **Electric B - 9" N Poppy Show Plate - Super!**
- _____ 278. M - 8¾" N Tri-Corner Wishbone Ftd. Plate - Gorgeous
- _____ 279. **Vas. Stretch - 11⅞" Chop Plate - Outstanding**
- _____ 280. Vas. Stretch - 11½" Chop Plate - Also Beautiful
- _____ 281. **Celeste B Stretch - 11⅞" Chop Plate - Very Nice**
- _____ 282. Smoky Pink Stretch - 13" Rolled Edge Scalloped Gold Dec. Centerpiece Bowl
- _____ 283. **G - Milbg. 10", 6-Ruffle Whirling Leaves Bowl - Lovely Satin**
- _____ 284. PO - Folding Fan Banana Boat Shape CRE Compote - Deep Opal - Super Color
- _____ 285. **Clam - Imp. Star Medallion 10" Plate - Superb Greens and Pinks**
- _____ 286. Blue Opal - 8½" Westmoreland ICS Scales Bowl - Exquisite
- _____ 287. **Rich M - 9" N Good Luck Plate/Rib Ext. - Outstanding Example**
- _____ 288. A - N PCE Good Luck Bowl/BW Ext. - Purples, Yellows, Greens
- _____ 289. **P - N 8½" Ruffled Stippled Grape & Cable Vt. Bowl - Fantastic Electric**
- _____ 290. Elec. P - N 9", 8-Ruffle Grape & Cable Vt. Bowl - Smooth Ext. - It's a 10!



- _____ 291. **W - N 8 1/4" PCE Nippon Bowl - Smooth Exterior Multi-Color - Dandy!**
- _____ 292. Scarce G - 9" N Collar Base Stippled Three Fruits Bowl - Stretchy Yellows and Pinks
- _____ 293. **G - 8 1/4", 8-Ruffle N Strawberry Bowl - Smooth Ext. - Gorgeous One**
- _____ 294. Lime IG - N Ruffled Hearts and Flowers Bowl - Rib Ext. - Super Irid.
- _____ 295. **P - 9" N Good Luck Plate / BW Ext. - Always In Demand**
- _____ 296. Rare A - 6 1/4" Persian Medallion Plate
- _____ 297. **G - 9 1/4", 3 in 1 Edge Fenton Vintage Grape Bowl - Scarce Size and Pretty**
- _____ 298. G - 9", 6-Ruffle Captive Rose Bowl
- _____ 299. **A - 9", 6-Ruffle Fenton Thistle Bowl - Purples and Blues**
- _____ 300. Scarce G - 8 1/4" CRE Ribbon Tie Bowl
- _____ 301. **A - 8 1/2" PCE N Stippled Rays Bowl - Smooth Ext. - Scarce Shape**
- _____ 302. G - 10", 6-Ruffle Mlbg. Primrose Bowl - Rim Chip
- _____ 303. **G - 9", 3 in 1 Edge Mlbg. Blackberry Wreath Bowl - Satin**
- _____ 304. M - Fashion Punch Cups - 10 x \$
- _____ 305. **Horehound - N 11" Diamond Point Vase - Exceptional Color & Scarcity**
- _____ 306. P - N 10 1/4" Diamond Point Vase - Multi Electric
- _____ 307. **Renniger B - N 10 1/4" Diamond Point Vase - Rare Color**
- _____ 308. Sapphire - N 10 1/2" Diamond Point Vase - What A Find
- _____ 309. **Outstanding Aqua Opal - 10 1/2" N Diamond Point Vase**
- _____ 310. Medium Ice B - 10 1/2" N Diamond Point Vase
- _____ 311. **Near Emerald G - 10 1/2" N Diamond Point Vase**
- _____ 312. **G - 9 1/4" N Diamond Point Vt. Vase - Starred Base - Alaskan Effect**
- _____ 313. **Frosty W - 9 1/4" N Diamond Point Vase**
- _____ 314. Pumpkin M - 9 1/2" N Diamond Point Vase
- _____ 315. **M - 9" N Diamond Point Vase - Unusual Square Top**
- _____ 316. P - 8 1/2" N Diamond Point Vase - 5" Super Top
- _____ 317. **Rare Electric B - 7 1/4" N Squatty Diamond Point Vase - 4 1/2" Opening**
- _____ 318. Scarce W - 7" N Squatty Diamond Point Vase - Frosty
- _____ 319. **Rare Ice G - 6 1/4" N Squatty Diamond Point Vase**
- _____ 320. Fantastic Pastel Ice B - 6 1/4" N Squatty Diamond Point Vase - Swimming Pool Blue
- _____ 321. **Pastel Peridot G - 9 1/4" N Drapery Vase - Golden M Overlay**
- _____ 322. Ice G - 8 1/4" N Drapery Vase - Lots of Pretty Blues
- _____ 323. **Aqua Opal - 9" N Drapery Vase - Soft Butterscotch Overlay**
- _____ 324. Rare B - 8" N Drapery Vase - One Toe Has 1/4" Chip
- _____ 325. **Pastel Aqua Opal - 7 1/4" N Drapery Vase - Normal Ft. Roughness - A Beauty**
- _____ 326. Rare P - 8" N Drapery Vase - Electric Beauty!
- _____ 327. **Fantastic Pastel Ice B - 8" N Drapery Vase - Hot Pinks and Blues**
- _____ 328. Frosty W - 8" N Drapery Vase - Normal Toe Roughness
- _____ 329. **Pumpkin M - 7 1/2" N Drapery Vase - Scintillating Pinks**
- _____ 330. G - 7" N Drapery Vase - One Toe Broken Off
- _____ 331. **Lav. Horehound - Mlbg. Diamonds Tumbler - Radium Rarity**
- _____ 332. G - Mlbg. Diamonds Tumbler - Loaded w/Radium Greens
- _____ 333. **Lav. - Mlbg. Diamonds Tumbler - Radium Purples**
- _____ 334. Radium M - Mlbg. Diamonds Tumbler
- _____ 335. **A - Mlbg. Marilyn Tumbler - Radium**
- _____ 336. M - Mlbg. Feather and Heart Tumbler - Polished Base
- _____ 337. **G - Mlbg. Hanging Cherries Flared Top Tumbler - Radium Beauty**
- _____ 338. G - Mlbg. Hanging Cherries Flared Top Tumbler - Minor Base Nick
- _____ 339. **G - Mlbg. Hanging Cherries Vt. Tumbler - Straight Sides - Super Radium Rarity**
- _____ 340. Rich M - Lily of the Valley Tumbler - **RARE** Beauty
- _____ 341. **B - Lily of the Valley Tumbler - Also Scarce**
- _____ 342. Light M - N Grape and Cable Tumbler
- _____ 343. **P - N Grape and Cable Tumbler - Breathtaking Electric Blues**
- _____ 344. Radium M - Stork and Rushes Beaded Tumbler - Pinks and Blues
- _____ 345. **M - Enamel Decorated Windflower Tumbler - Few Known**
- _____ 346. Electric B - Grape and Gothic Arches Tumbler - Outstanding Example
- _____ 347. **Emerald G - Grape and Gothic Arches Tumbler - Outstanding Example**
- _____ 348. B - Grape and Gothic Arches Tumbler - Blue & Gold Highlights
- _____ 349. **Rich M - Grape and Gothic Arches Tumbler - Near Pumpkin**
- _____ 350. Great G - 8 1/4" ICS Fenton Holly Bowl - Multi Color - Dandy
- _____ 351. **Scarce A - 9", 8-Ruffle Fenton Holly Bowl**
- _____ 352. M - 9", 8-Ruffle Fenton Holly Bowl - Great Blues and Pinks
- _____ 353. **A - 9 1/2", 3 in 1 Edge Fenton Holly Bowl - Scarce Shape and Color**
- _____ 354. M - Cobblestone 9 1/4", 8-Ruffle Bowl - Radium Electric
- _____ 355. **Scarce G - 9 1/4", 8-Ruffle Imp. Cobblestone Bowl**
- _____ 356. Electric P - 9", 8-Ruffle Imp. Open Rose Bowl
- _____ 357. **Top of the Line M - 9 1/4" Imp. Open Rose Plate - Covered In Blues & Pinks**
- _____ 358. B - 8 1/2" ICS Fenton Orange Tree Bowl - Looks Renniger - Enticing Color
- _____ 359. **P - PCE N Hearts and Flowers Bowl - Rib Ext. - Multi-Electric**
- _____ 360. Multi Electric P - 8 1/4" N 8-Ruffle Grape & Cable Bowl - Smooth Ext.
- _____ 361. **Slag A - Spat. Ftd. 8", 8-Ruffle Fenton Grape & Cable Bowl - Neat Effect**
- _____ 362. G - N Grape and Cable Bon-Bon - BW Ext. - Beautiful Blue Irid.
- _____ 363. **M - 11 1/4" Sq. 8-Ruffle Ball Ftd. Stag and Holly Bowl - Loaded with Blues**
- _____ 364. Scarce G - 8 1/4", 8-Ruffle Collar Base Lotus and Grape Bowl - Multi-Electric
- _____ 365. **M - Persian Medallion Bon-Bon - 4-Sides Up - Way Above Average**
- _____ 366. G - 7 1/4", 6-Ruffle Iris Compote
- _____ 367. **Royal B - Fenton 8 1/4", 6-Ruffle Vintage Bowl - Mirror-Like Finish**
- _____ 368. P - Imp. Grape Decanter - No Stopper - Super Electric
- _____ 369. **Red - Contemporary 1981 HOACGA Good Luck Candlelamp**
- _____ 370. Marigold Over Custard - Contemporary 1983 HOACGA Good Luck Loving Cup
- _____ 371. **Contemporary Electric B - 8 1/4" HOACGA 2000 Pansy Plate - WOW!**
- _____ 372. Sapphire - Dugan 11 1/2" Spiralex Vase - No Irid.
- _____ 373. **Ice G - 10 1/2" Leaf Columns Vase - Rare Color**
- _____ 374. Ice B - 11" Leaf Columns Vase - Also Very Scarce
- _____ 375. **W - 10 1/4" Leaf Columns Vase - Base Chip**
- _____ 376. P - 6 1/2" N Squatty Leaf Columns Vase - Multi Electric

- _____ 377. Sapphire - 6½" Squatty N Leaf Columns Vase - Rare, But Badly Cracked
- _____ 378. Scarce Radium G - 11" Boggy Rayou Vase - Nice Find
- _____ 379. G - 11½" Fenton Plume Panels Vase - Scarce and Great Color
- _____ 380. Sapphire - 12½" N Four Pillars Vase - Three Toes Chipped
- _____ 381. G - 11½" N Four Pillars Vase - Howard Furniture Adv. On Base - Scarce and Nice!
- _____ 382. Russet - 10" N Four Pillars Vase - Above Average Color
- _____ 383. M - 10" N Four Pillars Vase - Pumpkin Irid.
- _____ 384. P - 9¼" N Four Pillars Vase - Smooth Int. - Starred Base
- _____ 385. Aqua Opal - 10¼" N Four Pillars Vase - Butterscotch Overlay
- _____ 386. Medium Ice B - 10¼" N Four Pillars Vase - Rare Color - Broken Toe
- _____ 387. B - 9" N Four Pillars Vase - Fantastic Electric - Broken Toe
- _____ 388. G - 8½" N Four Pillars Vase - Radium Irid.
- _____ 389. Ice G Opal - 7" N Squatty Four Pillars Vase - M. Overlay - Toe Chips
- _____ 390. M - 8¼" N Drapery Vt. Vase - Pretty and Scarce
- _____ 391. Renninger B? - N 9" Drapery Vt. Vase - Beautiful Item
- _____ 392. M - 9" N Drapery Vt. Vase - Clear Base - Pumpkin Top
- _____ 393. Scarce P - 9¼" N Drapery Vt. Vase - Super Electric Find
- _____ 394. A - 14¼" Mlbg. Hobnail Vt. Vase - 4½" Base
- _____ 395. G - 17" Mlbg. Hobnail Vt. Vase - 4½" Base
- _____ 396. M - 17½" Mlbg. Hobnail Vt. Vase - 4½" Base
- _____ 397. M - 18¾" Imp. Morning Glory Funeral Vase - 5" Star and Ray Base - 7¼" Top
- _____ 398. M - 15¼" Imp. Morning Glory Funeral Vase - 5" Rayed Base - 8¼" Top
- _____ 399. P - 12¾" Imp. Morning Glory Funeral Vase - 5" Rayed Base - 9" Top
- _____ 400. Rare M - 12¼" Gothic Arches Vase - 8¼" Mouth - Chip On One Tip
- _____ 401. G - N 12½" Mid-Size Flute Vase - 4¼" Base - 5½" Top
- _____ 402. M - N 13" Mid-Size Flute Vase - 4¼" Base - 5½" Top
- _____ 403. Smoke - 15" Imp. Morning Glory Vase - 1¼" Base Crack - Scarce Color
- _____ 404. Frosty W - 15¼" Rustic Mid-Size Vase - 4¼" Base - 5" Top - Great Find
- _____ 405. Stretch Teal - 12" Imp. Smooth Panels Vase
- _____ 406. G - Mlbg. 9½" Swirled Hobnail Vase - Stunning!
- _____ 407. M - Mlbg. 8¼" Swirled Hobnail Vase - Nice Find
- _____ 408. BA - 10½" Dugan Lined Lattice Vase - Multi Electric Scarcity
- _____ 409. M - 10¼" Dugan Lined Lattice Vase - Swung - Pinks and Blues
- _____ 410. Frosty W - Dugan 11¼" Big Basketweave Vase - 4¼" Opening
- _____ 411. Deep B - 12¾" April Showers Vase - Plain Int.
- _____ 412. G - 11¼" April Showers Vase - Plain Int.
- _____ 413. G - 11" April Showers Vase - Peacock Tail Int.
- _____ 414. B - 10½" April Showers Vase - Peacock Tail Int.
- _____ 415. M - 11" April Showers Vase - Plain Int.
- _____ 416. Crystal - 12" N Tree Trunk Vt. Vase - No Irid.
- _____ 417. Crystal - 10" N Diamond Point Vt. Vase - Star Base - No Irid.
- _____ 418. B - 14¼" Fenton Fine Rib Vt. Vase - 3¼" Base - 5" Flame Top
- _____ 419. M - 15" Spearhead and Diamond Vase
- _____ 420. PO - 11" Dugan Target Vase
- _____ 421. B - 9½" Rustic Vase

- _____ 422. M - 10½" N Thin Rib Vt. Vase - Starred Base
- _____ 423. G - 7½" N Squatty Thin Rib Vt Vase - Starred Base
- _____ 424. M - 7¼" Squatty Diamond Point Columns Vase
- _____ 425. Clear Base - 7" Morning Glory Vase - M Overlay - 3¼" Top
- _____ 426. M - 6" Imp. Swung Squatty Ripple Vase - 4" Top
- _____ 427. M - 10" Imp. Ripple Swung Vase
- _____ 428. Clam - 9¼" Imp. Ripple Swung Vase - 4¼" Top - Lots of Pinks
- _____ 429. Helios G - 10¼" Imp. Ripple Swung Vase
- _____ 430. G - 11½" Imp. Ripple Swung Vase - Base Glows
- _____ 431. M - 15¼" Imp. Ripple Mid-Size Vase - 4" Base - 5" Top
- _____ 432. M - 12" Dugan Thermometer Vase
- _____ 433. A - 10" Long Thumbprint Vase
- _____ 434. G - 10¼" Long Thumbprint Vase
- _____ 435. Rich M - 9½" Twigs Vase
- _____ 436. M - 9" Beaded Bullseye Vase
- _____ 437. P - 9" Corinth Vase
- _____ 438. Yellow Amber - 8¼" Corinth Vase
- _____ 439. PO - 5" Tri-Corner CRE Dugan Thin Panel Vase
- _____ 440. Ice G - N Peacocks Plate - Fractures On Two Tips

THANK YOU FOR ATTENDING TODAY

SPECIAL NOTE:

CALENDAR OF AUCTION EVENTS

July 7 & 8 at Boonville
3rd Annual Antique's Extravaganza

Saturday, August 18, 2001
 Carnival Glass at Boonville Center

Saturday, September 15, 2001
 Carnival Glass at Boonville Center

Saturday, October 20, 2001
 Air Capital Convention - Wichita, Kansas

Saturday, November 10, 2001
 Carnival Glass at Boonville Center

For Free Color Catalogs & Information Write:

Mickey Reichel

516 Third Street, Boonville, MO 65233-1536

or Call: 660-882-5292 days or

660-882-5283 evenings

E-mail: mreichel@undata.com

Website: www.yourauction page.com/reichel

Call today for 2001 bookings.

(1 piece or entire collection!!)

MICKEY REICHEL
ANTIQUE & AUCTION, L.C.
 516 THIRD STREET
 BOONVILLE, MO 65233-1536

PRESORTED
 FIRST CLASS MAIL
 US POSTAGE PAID
 SEDALIA, MO
 PERMIT 217

RETURN SERVICE REQUESTED

FIRST CLASS MAIL

SPECIAL INVITATION TO:



164

8*82*****MIXED AADC 650

LEE MARKLEY

PO BOX 306

MENTONE, IN 46539-0306



Top: 332,
 333, 334,
 335, 336
 Middle: 338,
 339, 340,
 341, 343
 Bottom: 344,
 345, 346,
 347, 349

Top: 216,
 219, 220,
 221, 222
 Middle:
 225, 226,
 230, 231,
 232
 Bottom:
 233, 234,
 235, 236,
 331



Top: 52, 53, 57, 59, 62
 Middle: 65, 68-A, 69, 75, 76
 Bottom: 77, 79, 80, 81, 82



152



259



Top: 141, 135, 260
 Bottom: 251, 317, 243