



Lot #10



Lot #255



Lot #245



Lot #260



Lot #250



Lots #135, 145, 136

# BURNS

AUCTION SERVICE

## Lincoln Land Carnival Glass Convention Auction

Friday & Saturday  
June 8 & 9, 2001

Friday: Preview 3:00 P.M.; Auction 5:00 P.M.  
Lots 1-275

Saturday: Preview 7:00 A.M.; Auction 9:00 A.M.  
Lots 276-End

*at the*

**Best Western Midway Motor Lodge**

Milwaukee Airport

5105 South Howell Avenue

Milwaukee, Wisconsin 53207

(414) 769-2100

(Just off Exit 318 of I-94. Go north on Howell  
approximately one mile.)

In the midst of our busy season, it's always fun to pursue our June Migration to America's Dairyland. While there, we'll be presenting the annual Lincoln Land Carnival Glass Convention Auction in Milwaukee, Wisconsin.

This year's selection of glass comes from a private Indiana collection and will be sold to the highest bidder without reserve. There's a nice array with very limited damage and I'm sure, something for everyone.

The Best Western Midway – Airport will host the event. It's located right across the street from the Milwaukee Airport on South Howell Avenue. Those who have attended before should have no problems ... others call the motel at (414) 769-2100, and for further information on the convention, call president Jim Lewis at (847) 931-7306.

**CHECK OUT BURNS AUCTION SERVICE ON THE WEB!**

Visit our new Web site for information on upcoming auctions, complete auction listings and photos of auction highlights. You can e-mail your bids or requests for information.

www.woodsland.com/burnsauktion e-mail: brnzauctsv@aol.com

For further information, or if we can be of assistance call or write:

**BURNS AUCTION SERVICE**

Tom Burns

P.O. Box 608, Bath, NY 14810

(607) 776-7942

Cell #: (607) 731-9302 (do not leave messages)

Bill Richards

44 Water St., Poland, OH 44514

(330) 757-2001

FAX (330)-757-4917

Bill Richards, III

2253 Country Lane, Poland, OH 44514

(330) 755-2620

Email: BRNZAUCTSV@aol.com

**Mail Bids honored under the following conditions:**

1. No deposit required, Bidders will take full responsibility to honor any and all bids we execute for them. Payment in full plus postage and handling required after notification and before we ship any item to them.
2. Items are bid on in perfect condition with average or above average iridescence OR as listed in the brochures. Bids will not be carried out when damage on an item has been found during the auction. **PEOPLE PRESENT AT AUCTION ARE RESPONSIBLE FOR FINDING ANY PINHEADS, WEAR, SPOTTINESS, MANUFACTURER'S DEFECTS OR ANY OTHER MINOR FLAWS, ETC.**
3. Successful bidders will be notified by collect call from the auctioneer (**so be sure to include the phone number**).
4. Phone inquiries about the glass or any other questions are welcome.
5. If you have some other person at the auction bidding for you, they must pay for the item before taking it.
6. Any terms or conditions given the day of the auction will supersede any previously published information.
7. Mail, e-mail, fax and phone bids are due by Wednesday, June 6, 2001.

- |  |   |
|--|---|
| _____ 1. Westmoreland Bo-Peep Handled Mug – Mari.  | _____ 19. 7-7-1/2" N Rosette Ftd. 8 Ruffled Bowl – Purp. (nice color and irid.)   |
| _____ 2. 8-1/2" Westmoreland Pearly Dots 6 Ruffled Bowl – Blue Opal. (scarce)  | _____ 20. <b>N HEARTS AND FLOWERS FLARED PLATE W/ RIBBED EXT. – PURP. (RARE AND DESIRABLE; NICE MULTI-COLORED IRID.)</b>                                  |
| _____ 3. 8-1/2" Westmoreland Carolina Dogwood 6 Ruffled Bowl – Mari./ Milk Glass (scarce)  | _____ 21. <b>N HEARTS AND FLOWERS 8 RUFFLED BOWL W/ BASKETWEAVE EXT. – PURP. (VERY SCARCE W/ NICE COLOR AND IRID.)</b>                                    |
| _____ 4. Westmoreland Corinth J.I.P. Vase – Teal   | _____ 22. <b>N HEARTS AND FLOWERS 8 RUFFLED BOWL W/ RIBBED EXT. – ICE GREEN (RARE AND DESIRABLE; NICE COLOR AND IRID.)</b>                                |
| _____ 5. <b>WESTMORELAND CORINTH J.I.P. VASE – BLUE OPAQUE (VERY SCARCE; NICE COLOR AND IRID.)</b>                                   | _____ 23. N Hearts and Flowers 8 Ruffled Bowl w/ Ribbed Ext. – Ice Blue (very scarce; nice color and irid.)   |
| _____ 6. Westmoreland Corinth J.I.P. Vase – P. Opal. (scarce; nice opal.)  | _____ 24. N Hearts and Flowers 8 Ruffled Bowl w/ Ribbed Ext. – White (very scarce; nice color and irid.)  |
| _____ 7. N Memphis Handled Punch Cup – Ice Blue (scarce)   | _____ 25. <b>N HEARTS AND FLOWERS STEMMED 6 RUFFLED COMPOTE W/ RIBBED EXT. – MARI./ CUSTARD (EXTREMELY RARE AND NICE; HAS PULLED POINT ON EDGE)</b>       |
| _____ 8. N Wide Panel Stretch Stemmed Sherbert – Blue Opaque (scarce)  | _____ 26. <b>N HEARTS AND FLOWERS STEMMED 6 RUFFLED COMPOTE W/ RIBBED EXT. – AQUA OPAL. (RARE AND DESIRABLE; REALLY NICE PASTEL EXAMPLE)</b>              |
| _____ 9. N Wide Panel Ind. Ftd. Salt Dip – Mari. (nice color)  | _____ 27. N Hearts and Flowers Stemmed 6 Ruffled Compote w/ Ribbed Ext. – Ice Green (rare and desirable; irid. is light)                                  |
| _____ 10. <b>N PULLED HUSK CORN VASE – PURP. (EXTREMELY RARE AND DESIRABLE ITEM W/ GOLDISH HIGHLIGHTS; SMALL SLIVER ON ONE HUSK)</b> | _____ 28. N Hearts and Flowers Stemmed 6 Ruffled Compote w/ Ribbed Ext. – Lt. Ice Blue (rare and desirable; nice color and average irid.)                 |
| _____ 11. <b>N CORN VASE W/ PLAIN BASE – DK. ICE GREEN (VERY SCARCE; REALLY NICE COLOR)</b>  | _____ 29. (2) N Hearts and Flowers Stemmed 6 Ruffled Compotes, (1) Ribbed, (1) Plain Ext. – White (very scarce; have different exteriors; selling choice) |
| _____ 12. <b>N CORN VASE W/ STALK BASE – WHITE (VERY SCARCE; NOT REALLY FROSTY BUT REALLY NICE IRID.)</b>                            |   |
| _____ 13. 7-7-1/2" N Thin Rib Squatty Flared Vase – Purp. (nice color and irid.)   |   |
| _____ 14. <b>N TORANDO SMALL SIZE TRI CORNERED VASE – PURP. (VERY SCARCE; NICE COLOR AND IRID.)</b>                                  |   |
| _____ 15. <b>N IVY TOWN PUMP – PURP. (RARE AND DESIRABLE; NICE BRIGHT HIGHLIGHTS)</b>  |   |
| _____ 16. <b>N DAISY AND DRAPE FTD. FLARED VASE – AQUA OPAL. (RARE AND DESIRABLE; NICE IRID. AND OPAL.)</b>                          |   |
| _____ 17. N Daisy and Drape Ftd. Flared Vase – Blue (very scarce; has multi-colored satiny finish)                                   |   |
| _____ 18. N Daisy and Drape Ftd. Turned In Vase – White (scarce; nice and frosty)  |   |

- \_\_\_\_\_ 30. **N HEARTS AND FLOWERS STEMMED 6 RUFFLED COMPOTE W/ RIBBED EXT. – PURP. (ONE OF THE BETTER EXAMPLES I'VE SEEN IN THIS COLOR)**
- \_\_\_\_\_ 31. N Hearts and Flowers Stemmed 6 Ruffled Compote w/ Ribbed Ext. – Purp. (very scarce and desirable w/ nice irid.)
- \_\_\_\_\_ 32. N Hearts and Flowers Stemmed 6 Ruffled Compote w/ Ribbed Ext. – Blue/ Elec. Blue (very scarce; nice color w/ blue highlights)
- \_\_\_\_\_ 33. N Hearts and Flowers Stemmed 6 Ruffled Compote w/ Ribbed Ext. – Dk. Mari. (scarce and very desirable; great color and irid.)
- \_\_\_\_\_ 34. N Embroidered Mums 8 Ruffled Bowl w/ Ribbed Ext. – Blue (scarce; nice color w/ average irid.)
- \_\_\_\_\_ 35. N Blossomtime Stemmed 6 Ruffled Compote – Purp. (very scarce; nice color and irid.)
- \_\_\_\_\_ 36. N Blossomtime Stemmed 6 Ruffled Compote – Purp. (very scarce; nice color and irid.)
- \_\_\_\_\_ 37. N Wide Panel Epergne Center Lily Only – Green (very scarce item if you need it; nice)
- \_\_\_\_\_ 38. (3) N Wide Panel Epergne Side Lilies Only – Green (selling choice; tough if you need them)
- \_\_\_\_\_ 39. N Wide Panel Epergne Base Only – Clear Opal. (not carnival; tough part if ya need it)
- \_\_\_\_\_ 40. **N PEACOCK AT THE URN 7 PC. ICE CREAM SET – ICE GREEN (RARE AND DESIRABLE SET; NICE COLOR W/ AVERAGE IRID.)**
- \_\_\_\_\_ 41. N Peacock at the Urn 7 Pc. Ice Cream Set – Purp. (very scarce and desirable set; nice color and irid.)
- \_\_\_\_\_ 42. N Singing Birds 7 Pc. Water Set – Green (very scarce and desirable set; nice color and irid.)
- \_\_\_\_\_ 43. N Singing Birds 4 Pc. Table Set – Green (very scarce and very desirable; sold as a set)
- \_\_\_\_\_ 44. N Singing Birds Handled Mug – Green (scarce; nice color)
- \_\_\_\_\_ 45. N Singing Birds 7 Pc. Berry Set – Green (actually quite a rare set; nice color and irid.)
- \_\_\_\_\_ 46. **7-1/2-8" N WISHBONE DEEP 8 RUFFLED FTD. BOWL W/ RUFFLES AND RINGS EXT. – EMERALD GREEN (AN EXCELLENT EXAMPLE W/ GREAT COLOR AND IRID.)**
- \_\_\_\_\_ 47. N Nippon Bowl w/ P.C.E. and Ribbed Ext. – Ice Blue (very scarce; nice color and irid.)
- \_\_\_\_\_ 48. 10-11" Tall N Tree Trunk Standard Swung Vase – Purp. (nice color and irid.)
- \_\_\_\_\_ 48A. **N TREE TRUNK STANDARD SWUNG VASE – AQUA OPAL. (VERY RARE AND VERY DESIRABLE; GREAT OPAL. W/ A NICE MARI. OVERLAY – SUPER!)**
- \_\_\_\_\_ 48B. **6" N TREE TRUNK SQUATTY SWUNG VASE – ICE BLUE (RARE AND VERY DESIRABLE SIZE; HAS TO BE ONE OF THE BEST EXAMPLES I'VE SEEN – SUPER!)**
- \_\_\_\_\_ 49. 8-1/2" Tall N Tree Trunk Flared Swung Vase – Green (nice irid.)
- \_\_\_\_\_ 50. **N PEACOCKS PLATE W/ RIBBED EXT. – ICE BLUE (RARE AND DESIRABLE; NICE COLOR AND IRID.)**
- \_\_\_\_\_ 51. N Peacocks Plate w/ Plain Ext. – White (very scarce w/ nice irid.)
- \_\_\_\_\_ 52. N Peacocks Plate w/ Ribbed Ext. – Ice Green (scarce and desirable; nice color and irid.)
- \_\_\_\_\_ 53. **N PEACOCKS PLATE W/ RIBBED EXT. – BLUE/ ELEC. BLUE (VERY SCARCE AND VERY DESIRABLE; NICE BLUE HIGHLIGHTS)**
- \_\_\_\_\_ 54. N Peacocks Plate w/ Ribbed Ext. – Purp. (very scarce; nice color and irid.)
- \_\_\_\_\_ 55. N Peacocks Plate w/ Ribbed Ext. – Mari. (scarce; nice color and irid.)
- \_\_\_\_\_ 56. N Peacocks Bowl w/ P.C.E. and Ribbed Ext. – Mari. (very scarce; nice color and irid.)
- \_\_\_\_\_ 57. **N GOOD LUCK 8 RUFFLED BOWL W/ NARROW BASE AND UNIRIDIZED EXT. – BLUE/ ELEC. BLUE (RARE AND DESIRABLE; HAS BRIGHT YELLOW/ BLUE IRID.)**
- \_\_\_\_\_ 58. N Good Luck Flared Plate w/ Basketweave Ext. – Amyth. (scarce; has bronze satiny finish)
- \_\_\_\_\_ 59. N Good Luck 8 Ruffled Bowl w/ Ribbed Ext. – Purp. (very scarce; has nice bright irid.)
- \_\_\_\_\_ 60. **N PEACH 7 PC. WATER SET – ELEC. BLUE (RARE AND VERY DESIRABLE; HAS NICE BRIGHT IRID. W/ BLUE HIGHLIGHTS)**
- \_\_\_\_\_ 61. N Peach 4 Pc. Table Set – White (rare set; frosty and nice; worn gold decoration)
- \_\_\_\_\_ 62. N Peach 5 Pc. Berry Set – White (very scarce set; frosty w/ some gold wear)
- \_\_\_\_\_ 63. N G & C Breakfast Creamer and Open Sugar – Purp. (scarce set; nice color and irid.)
- \_\_\_\_\_ 64. N G & C Candlestick – Purp. (bright irid.; scarce)
- \_\_\_\_\_ 65. **N G & C FTD. RUFFLED SMALL SIZE FRUIT BOWL – ICE BLUE (VERY RARE AND DESIRABLE; SUPER COLOR W/ GREAT IRID.)**
- \_\_\_\_\_ 66. N G & C Ftd. Ruffled Small Size Fruit Bowl – Purp. (scarce w/ nice bright irid.)
- \_\_\_\_\_ 67. N G & C Shot Glass – Dk. Mari. (very scarce; great color and irid.)
- \_\_\_\_\_ 68. N G & C Tankard Tumbler – Green (very scarce; nice color and irid.)
- \_\_\_\_\_ 69. 6" N G & C Handgrip Plate w/ Basketweave Ext. – Amyth. (scarce; nice bright highlights)
- \_\_\_\_\_ 70. **N G & C FTD. HATPIN HOLDER – LIME ICE GREEN (VERY RARE AND VERY DESIRABLE; FEET MAY HAVE BEEN POLISHED)**
- \_\_\_\_\_ 71. N G & C Ftd. Hatpin Holder – Green (scarce; has dark overlay)
- \_\_\_\_\_ 72. N G & C Ftd. Hatpin Holder – Purp. (scarce; has nice color and irid.)
- \_\_\_\_\_ 73. N G & C Covered Powder Jar – Purp. (scarce; nice color and irid.)
- \_\_\_\_\_ 74. N G & C Cup and Saucer – Purp. (scarce set; nice color and satiny irid.)
- \_\_\_\_\_ 75. **N G & C FTD. OVAL BANANA BOAT – ICE GREEN (RARE AND DESIRABLE; GREAT COLOR AND IRID.)**
- \_\_\_\_\_ 76. N G & C Ftd. Oval Banana Boat – White (very scarce; great color and irid.; nice)
- \_\_\_\_\_ 77. N G & C Ftd. Oval Banana Boat – Purp. (scarce; nice color and irid.)
- \_\_\_\_\_ 78. N G & C Ftd. Oval Banana Boat – Dk. Mari. (really nice color and irid.; really dark)
- \_\_\_\_\_ 79. N G & C Covered Sweetmeat Compote – Purp. (scarce; nice color and irid.)
- \_\_\_\_\_ 80. N G & C Variant Stippled Plate w/ "Old Rose Distillery" Adv. – Green (rare and desirable; has yellow highlights)
- \_\_\_\_\_ 81. N G & C Handled Covered Cracker Jar – Purp. (very scarce; really nice color and irid.)
- \_\_\_\_\_ 82. N G & C 4 Pc. Table Set – Purp. (very scarce and desirable; great butter dish; sold as a set)
- \_\_\_\_\_ 83. N G & C 7 Pc. Water Set – Purp. (scarce; nice color and irid.)
- \_\_\_\_\_ 84. N Grape Arbor Tumbler – Purp. (scarce; nice color and irid.)
- \_\_\_\_\_ 85. **N GRAPE ARBOR 6 PC. TANKARD WATER SET – ICE BLUE (RARE AND DESIRABLE; NICE COLOR AND IRID.)**
- \_\_\_\_\_ 86. N Grape Arbor Tumbler – Dk. Ice Blue (very scarce item; nice dark color)
- \_\_\_\_\_ 87. **N GRAPE ARBOR 7 PC. TANKARD WATER SET – WHITE (RARE AND DESIRABLE SET; NICE AND FROSTY)**
- \_\_\_\_\_ 88. N Drapery Rose Bowl – Aqua Opal. (very scarce; nice opal. and irid.)
- \_\_\_\_\_ 89. N Drapery Tri Cornered Candy Dish – Green (rare in this color; great irid.; nice)
- \_\_\_\_\_ 90. **N PEACOCK AT THE FOUNTAIN 7 PC. BERRY SET – ICE BLUE (RARE AND DESIRABLE SET; GREAT COLOR AND IRID.)**
- \_\_\_\_\_ 91. N Raspberry 7 Pc. Water Set – Purp. (scarce set; nice color and well matched)
- \_\_\_\_\_ 92. N Raspberry Ftd. Handled Gravy Boat – Purp. (scarce; nice color; some damage on feet)
- \_\_\_\_\_ 93. 10-1/2" Tall N Four Pillar Swung Vase – Aqua Opal. (scarce; nice opal. and butterscotch overlay)
- \_\_\_\_\_ 94. 9-1/2" N Wild Strawberry 8 Ruffled Bowl w/ Basketweave Ext. – Purp. (scarce; nice color and irid.)
- \_\_\_\_\_ 95. **9" N ROSE SHOW VARIANT PLATE W/ RIBBED EXT. AND NARROW BASE – MARI. (RARE AND DESIRABLE; ACTUALLY QUITE A NICE EXAMPLE)**
- \_\_\_\_\_ 96. N Rose Show Flared Plate – Blue (very scarce and desirable; nice blue highlights)
- \_\_\_\_\_ 97. **N ROSE SHOW 8 RUFFLED BOWL – ELEC. BLUE (VERY DESIRABLE W/ EXCELLENT BLUE HIGHLIGHTS)**
- \_\_\_\_\_ 98. N Rose Show 8 Ruffled Bowl – Dk. Mari. (scarce and very desirable; nice color and irid.)
- \_\_\_\_\_ 99. N Rose Show Flared Plate – White (very scarce; nice color and nice irid.)
- \_\_\_\_\_ 100. N Poppy Show Flared Plate – White (very scarce; has bright highlights; really nice)
- \_\_\_\_\_ 101. N Poppy Show 8 Ruffled Bowl – White (scarce; nice color and irid.)
- \_\_\_\_\_ 102. N Strawberry Plate w/ Basketweave Ext. – Amyth. (scarce; has a bright satiny finish)
- \_\_\_\_\_ 103. N Strawberry Plate w/ Plain Ext. – Mari. (scarce; nice color and irid.)
- \_\_\_\_\_ 104. N Strawberry 8 Ruffled Bowl w/ Basketweave Ext. – Green (scarce; has bright satiny finish)

105. N Oriental Poppy 7 Pc. Tankard Water Set – Purp. (very scarce; has a nice bright finish)
106. N Fruit and Flowers Stemmed Handled Bon Bon – Ice Blue (very scarce; nice color; irid. a bit light)
107. N Fruit and Flowers Stemmed Handled Bon Bon – White (very scarce; nice color and irid.)
108. N Fruit and Flowers Stemmed Handled Bon Bon – Odd Lt. Aqua w/ Opal. Tips (sorta an oddball; I haven't seen one quite like this)
109. N Fruit and Flowers Stemmed Handled Bon Bon – Blue (scarce and desirable w/ bright irid.)
110. N Three Fruits Medallion Stippled 8 Ruffled Ftd. Bowl w/ Meander Ext. – Aqua Opal. (rare and desirable w/ nice irid.)
111. N Three Fruits Medallion Stippled 8 Ruffled Ftd. Bowl w/ Meander Ext. – Aqua Opal. (rare and desirable w/ nice irid.)
112. N Three Fruits Stippled Flared Plate w/ Ribbed Ext. – Purp. (very scarce; nice color and irid.; tough!)
113. N Three Fruits Stippled Flared Plate w/ Ribbed Ext. – Dk. Mari. (very scarce; really nice color and irid.)
114. N Three Fruits Plate w/ Basketweave Ext. – Amyth. (scarce; nice color and bright satiny irid.)
115. N Three Fruits Plate w/ Basketweave Ext. – Green (scarce; nice color and satiny irid.)
116. N Three Fruits Plate w/ Basketweave Ext. – Mari. (nice color and satiny irid.)
117. N Fine Cut and Roses Ftd. Ruffled Rose Bowl w/ Fancy Int. – Ice Blue (very scarce; nice color and irid.)
118. N Fine Cut and Roses Ftd. 6 Ruffled Candy Dish w/ Fancy Int. – White (scarce and frosty; rough feet)
119. N Fine Cut and Roses Ftd. 6 Ruffled Candy Dish w/ Fancy Int. – White (scarce and frosty; rough feet)
120. N Fine Cut and Roses Ftd. 6 Ruffled Candy Dish w/ Fancy Ext. – Aqua Opal. (very scarce; nice opal. and overlay; rough on feet)
121. N Leaf and Beads Ftd. Rose Bowl – Aqua Opal. (scarce; nice color w/ light gold irid.)
122. N Double Loop Stemmed Open Sugar (or Chalice) – Aqua Opal. (very scarce; great color and irid.)
123. **N DOUBLE LOOP HANDLED CREAMER – BLUE (VERY RARE ITEM; PERFECT W/ NICE COLOR AND IRID.)**
124. N Double Loop Open Sugar (or Chalice) – Elec. Blue (super color and irid.)
125. N Dandelion 7 Pc. Tankard Water Set w/ Ribbed Int. – Dk. Mari. (quite a scarce set; nice color and irid.)
126. N Eight Sided Handled Bushel Basket – Ice Green (very scarce; nice color and irid.)
127. N Eight Sided Handled Bushel Basket – Ice Blue (very scarce; nice color and irid.)
128. N Eight Sided Handled Bushel Basket – White (scarce; frosty)
129. N Round Handled Bushel Basket – Ice Green (very scarce; nice color and irid.)
130. N Round Handled Bushel Basket – Odd Aqua w/ Opal. Tips (odd color; like lot No. 108; different)
131. N Round Handled Bushel Basket – Purp. (scarce; nice color)
132. N Round Handled Bushel Basket – Purp. (scarce; nice color)
133. N Round Handled Bushel Basket – Blue (scarce; nice color)
134. N Round Handled Bushel Basket – Blue (scarce; nice color)
135. **M'BURG PERFECTION TUMBLER – GREEN (VERY RARE AND VERY DESIRABLE; NICE IRID. AND TOUGH TO FIND)**
136. Cambridge Inverted Thistle Tumbler – Purp. (rare and desirable; nice radium finish)
137. Cambridge Inverted Strawberry Tumbler – Purp. (rare and desirable; nice radium finish)
138. Cambridge Inverted Strawberry Tumbler – Mari. (very scarce and desirable; nice irid.)
139. Jenkins Mayflower or Daisy/ Diamond Cut Tumbler – Mari. (nice color)
140. N Raspberry Tumbler – Lt. Ice Blue (rare and desirable; nice irid.)
141. N Interior Swirl Tumbler – Mari.
142. Dugan Maple Leaf Tumbler – Mari.
143. Fenton Scale Band Tumbler – Mari.
144. Fenton Paneled Dandelion Tumbler – Mari.
145. **FENTON LILY OF THE VALLEY TUMBLER – DK. MARI. (RARE AND VERY DESIRABLE; SUPER COLOR AND IRID.)**
146. Fenton Fluffy Peacock Tumbler – Green (very scarce; nice dark color and irid.)
147. Fenton Fluffy Peacock Tumbler – Lt. Mari.
148. Fenton Fluffy Peacock Tumbler – Blue (very scarce w/ average irid.)
149. U.S. Glass Cosmos and Cane Tumbler – Honey Amber (really nice irid.)
150. U.S. Glass Cosmos and Cane Tumbler w/ "J.R. Milner, Co. Lynchburg, Va." Advertising – Honey Amber (rare and very desirable; great irid.)
151. Imperial Star Medallion Handled Milk Pitcher – Smoke (scarce w/great irid.)
152. Imperial Beaded Acanthus Handled Milk Pitcher – Dk. Mari. (scarce w/ average irid.)
153. Imperial Poinsettia Handled Milk Pitcher – Dk. Mari. (super color and irid.)
154. Imperial Octagon 7 Pc. Table Sized Water Set – Dk. Mari. (nice set w/ super irid.)
155. **IMPERIAL FASHION GIANT ROSE BOWL – PURP. (VERY RARE AND VERY DESIRABLE; SUPER ITEM)**
156. Imperial Fashion Giant Rose Bowl – Dk. Mari. (excellent example w/ great irid.)
157. Imperial Diamond Ring Giant Rose Bowl – Mari. (very scarce shape for this pattern)
158. Imperial Star and File 7 Pc. Water Set – Dk. Mari. (rare set to find complete; nice color)
159. Imperial Windmill Tumbler – Purp. (very scarce; nice irid. w/ gold highlights)
160. **11" IMPERIAL HEAVY GRAPE CHOP PLATE – SMOKE (VERY RARE AND VERY DESIRABLE; SUPER STRETCH EFFECT)**
161. **11" IMPERIAL HEAVY GRAPE CHOP PLATE – WHITE (RARE AND DESIRABLE W/SUPER IRID. AND EFFECT)**
162. 11" Imperial Heavy Grape Chop Plate – Amber (rare color for this pattern; great irid.)
163. 11" Imperial Heavy Grape Chop Plate – Dk. Mari. (scarce; great color and irid.)
164. 8" Imperial Heavy Grape Flat Plate – Mari. (satiny finish)
165. **8-1/4" IMPERIAL HEAVY GRAPE FLAT PLATE – SMOKE (VERY RARE COLOR IN THIS SIZE; SUPER IRID.)**
166. 8-1/4" Imperial Heavy Grape Flat Plate – Lt. Amyth. (super odd light base color w/super irid.)
167. 8" Imperial Heavy Grape Flat Plate – Purp. (very scarce w/ super irid.)
168. 6-1/2" Imperial Grape Flat Plate – Purp. (rare and desirable w/ great irid.)
169. 9-1/4" Imperial Embossed Scroll Flat Plate – Purp. (very scarce w/ super irid.)
170. 3-1/4" Tall Imperial Embossed Scroll Stemmed 6 Ruffled Miniature Compote – Purp. (a rare item in a cute size w/ fantastic irid.)
171. Imperial Wide Panel (or Chesterfield) 2 Handled Toothpick Holder Signed w/ Iron Cross – Mari. (rare and desirable miniature)
172. Imperial Flute Toothpick Holder – Purp. (super irid.)
173. Imperial Flute Toothpick Holder – Dk. Mari. (super irid.)
174. Imperial Grape Tumbler – Purp. (great color and irid.)
175. Imperial Diamond Lace 7 Pc. Water Set – Purp. (rare w/ great color and super irid.)
176. Imperial Diamond Lace Tumbler – Lt. Amyth. (odd base color w/ super irid.)
177. Imperial Diamond Lace Tumbler – Amyth. (scarce)
178. Imperial Grape 8 Pc. Wine Set – Purp. (rare and desirable set w/ nice color and irid.)
179. 9" Imperial Pansy 8 Ruffled Bowl – Amyth. (scarce; nice color)
180. Pair Imperial Ripple Mid Size Swung Vases 12-3/4–13-1/4" Tall x 3-7/8" Base – Purp. (super matched pair; selling so much each for pair)
181. 9" Tall x 2-1/2" Base Imperial Ripple Small Swung Vase – Clamb. (nice irid.)
182. 8-1/4" Tall x 2-3/4" Base Imperial Ripple Standard Swung Vase – Amber (scarce color; nice)
183. **IMPERIAL LOGANBERRY VASE – AMBER (RARE AND DESIRABLE; MULTI-COLORED W/ GOLD HIGHLIGHTS)**
184. **IMPERIAL POPPY SHOW LARGE FLARED VASE – MARI. (GETTIN' TOUGHER TO FIND; NICE COLOR AND IRID.)**
185. **PAIR IMPERIAL MORNING GLORY SWUNG FUNERAL VASES, APPROX. 14-1/4" TALL X APPROX. 5" BASE – SMOKEY VIOLET (VERY ODD COLOR TO FIND THIS PAIR IN; SELLING CHOICE)**
186. 18" Tall x Approx. 5" Base Morning Glory Swung Funeral Vase – Mari. (scarce w/ great irid.)
187. 7-3/4" Tall x 2-3/8" Base Imperial Miniature Morning Glory Swung Vase – Purp. (super color and irid.)

188. 8-1/4" Tall x 2-3/8" Base Imperial Miniature Morning Glory Swung Vase – Dk. Mari. (nice dark color)
189. 6" Tall x 2-3/8" Base Imperial Morning Glory Swung Flared Vase – Mari. (nice color and irid.)
190. 7" Tall x 2-3/8" Base Imperial Morning Glory Swung Flared Vase – Smoke (scarce color; nice)
191. Pair 9" Tall 8 Paneled Imperial Wide Panel Candlesticks – Smoke (scarce pair w/ great irid.)
192. Pair Imperial Soda Gold Squatty Candlesticks – Smoke (nice pair)
193. Imperial Grape Cup and Saucer – Helios Green
194. Imperial Grape Cup and Saucer – Mari.
195. Imperial Waffle Block Handled Flower Basket – Teal (scarce base color w/ average irid.)
196. Pair Imperial Cockatoo Hanging Wall Vases – Mari. (scarce; selling choice)
197. 9-1/2" Imperial Open Rose Flat Plate – Amber (very scarce w/ great color and irid.)
198. 9" Imperial Open Rose Flat Plate – Mari. (nice color and irid.)
199. 6-1/8" Imperial Stretch Wide Panel Deep Round Bowl – Red/Amberina (a cute size; nice color)
200. 9-1/4" Tall x 5-1/8" Base Imperial Zipper Loop Kerosene Table Lamp – Mari. (very scarce and desirable; really nice color and irid.)
201. Imperial Wide Panel Handled Mug and 6" Plate – Clamb.
202. Fenton Blueberry Tumbler – Mari. (manuf. check inside)
203. Fenton Blackberry Block Tumbler – Mari. (scarce)
204. Fenton Orange Tree Orchard Tumbler – Dk. Mari. (nice color and irid.)
205. (2) Fenton Orange Tree Scroll Tumblers – Dk. Mari. (very scarce w/ great irid.)
206. Fenton Orange Tree Scroll Tumbler – Blue (scarce; nice average color and irid.)
207. Fenton Orange Tree Orchard Tumbler – Blue (scarce; nice color and irid.)
208. Fenton Bouquet Tumbler – Blue (scarce)
209. Fenton Lattice and Grape Tumbler – Blue
210. **DUGAN GOD AND HOME TUMBLER – BLUE (RARE AND DESIRABLE; NICE COLOR AND SATINY IRID.)**
211. Imperial Tiger Lily Tumbler w/ Enamelled Decor – Purp. (unusual item; has enamel decor on lilies)
212. European Tiger Lily Tumbler – Blue (very scarce and desirable; nice irid.)
213. N Raspberry Tumbler – Purp. (really nice example)
214. N Raspberry Tumbler – Purp.
215. N Wishbone Tumbler – Green (very scarce w/ nice color and irid.)
216. N Wishbone Tumbler – Lt. Mari. (light in color but scarce)
217. N Grape and Gothic Arches Tumbler – Green (scarce; nice color)
218. N Springtime Tumbler – Dk. Mari. (very scarce; really nice dark color)
219. N Wide Panel Tumbler – Mari.
220. **U.S. GLASS (?) WHITE OAK TUMBLER – MARI. (RARE AND DESIRABLE; NICE COLOR AND PERFECT)**
221. Imperial Windmill Tumbler – Dk. Mari. (great color and irid.)
222. Dugan Vineyard Tumbler – Purp. (scarce color; nice)
223. Imperial Field Flower Tumbler – Green
224. Dugan Floral and Grape Tumbler – Amyth.
225. **AUSTRALIAN BANDED DIAMOND TUMBLER – MARI. (VERY RARE IN THIS COLOR; NICE EXAMPLE)**
226. European "Ranger" Style Tumbler – Dk. Mari. (great color but chipped)
227. 9-1/2" Jenkins Field Thistle Flared Plate – Mari. (rare item; actually quite a nice example)
228. Depression Era Stippled Strawberry Tumbler – Mari. (scarce item w/ only fair mold detail)
229. Depression Era Horseshoe Tumbler – Mari. (scarce item; normal color and irid.)
230. 9-1/2" Australian Kingfisher 12 Ruffled Bowl – Mari. (very scarce w/ nice color and irid.)
231. Early Plastic Belt Buckle Button or Hatpin w/ Star of David Pattern Decoration – Dark (unusual item w/ an unusual patterned item)
232. Star of David (?) Hatpin – Dark (I do not recall seeing one of these)
233. Bag of Over (30) Buttons – Dark (selling as one lot)
234. *Beaded Necklace and (3) Top of the Walk Hatpins – Dark (selling choice)*
235. (4) Rooster Hatpins – Amber/ Green/ White/ Amyth. (selling choice; scarce)
236. Triplet Hatpin – Dark
237. Odd Geometric Style Hatpin – Dark (nice item)
238. (9) Misc. Hatpins (Big Butterfly, Cattails, and Mirrored Greek Key) – Dark (selling choice)
239. Lot (8) Misc. Hatpins (Triad, Etc.) – Dark (selling choice)
240. Maker (?) Seaweed Kerosene Lamp – Mari. (a later looking item that is quite scarce)
241. 9" M'burg Trout and Fly 6 Ruffled Bowl – Green (very scarce and desirable; satiny)
242. 9" M'burg Nesting Swan 6 Ruffled Bowl – Amyth. (very scare w/ nice satiny finish)
243. 9-3/4" M'burg Holly Whirl 6 Ruffled Bowl – Green (scarce; nice satiny finish)
244. 9-1/4" M'burg Holly Whirl 6 Ruffled Bowl – Mari. (nice example; satiny)
245. **M'BURG HOBSTAR AND FEATHER GIANT ROSE BOWL – GREEN (RARE AND VERY DESIRABLE; GREAT COLOR AND IRID.)**
246. M'burg Leaf and Little Flowers 6 Ruffled Stemmed Compote – Green (radium and very desirable; great irid.)
247. M'burg Leaf and Little Flowers 6 Ruffled Stemmed Compote – Mari. (radium and very scarce; great irid.)
248. M'burg Leaf and Little Flowers Flared Stemmed Compote – Green (satiny and very scarce)
249. (2) M'burg Leaf and Little Flowers Flared Stemmed Compote – Mari. (satiny and very scarce; selling choice)
250. **9-1/4" M'BURG MANY STARS ICE CREAM SHAPED BOWL – BLUE (EXTREMELY RARE ITEM; HAS TO BE THE BEST EXAMPLE I'VE SEEN; SATINY AND SUPER)**
251. **M'BURG HOBNAIL SUGAR LID ONLY – BLUE (FIND ME THE BASE!! WHAT A GREAT PART!)**
252. M'burg Sunflower Pin Tray – Amyth. (rare and desirable; appeared to be in good shape)
253. M'burg Holly Sprig Handled 2 Sided Card Tray – Amyth. (radium and nice)
254. 7-1/2" M'burg Blackberry Wreath 6 Ruffled Bowl – Green (nice color and irid.)
255. **M'BURG ROSE COLUMNS VASE – GREEN (VERY RARE AND VERY DESIRABLE; GREAT COLOR AND REALLY NICE SATINY LOOK; WHERE DO YA SEE THEM!?)**
256. 7-1/2" M'burg Hanging Cherries Ice Cream Shaped Bowl – Amyth. (scarce, satiny)
257. 7-1/2" M'burg Hanging Cherries Ice Cream Shaped Bowl – Mari. (satiny, nice)
258. 7-1/2" M'burg Blackberry Wreath Bowl w/ 3 in 1 edge – Mari. (nice color)
259. 10-1/2" M'burg Rosiland Lg. 6 Ruffled Bowl – Mari. (nice satiny finish)
260. **M'BURG MARILYN 7 PC. WATER SET – AMYTH. (VERY RARE AND VERY ATTRACTIVE SET – REALLY NICE)**
261. Cambridge Inverted Thistle Tumbler – Amyth. (rare and desirable; nice color and irid.)
262. 9-1/2" M'burg Fleur de Lis Ice Cream Shaped Bowl – Green (very scarce; nice satiny finish)
263. 9-3/4" M'burg Primrose 6 Ruffled Bowl – Green (nice color and irid.)
264. 8-1/2" M'burg Holly Sprig 6 Ruffled Crimped Edge Bowl – Green (radium and very attractive)
265. **7-1/2" M'BURG LETTERED COURTHOUSE 6 RUFFLED BOWL – AMYTH. (RADIUM AND RARE; TYPICAL GREAT IRID.)**
266. 9-1/2" M'burg Fleur de Lis 6 Ruffled Bowl – Amyth. (radium and nice; gettin' scarce)
267. 9-1/2" M'burg Whirling Leaves 6 Ruffled Bowl – Amyth. (scarce; nice)
268. 9-1/2" M'burg Rays & Ribbons 6 Ruffled Crimped Edge Bowl – Amyth. (radium w/ a different shape)
269. M'burg Boutonniere Stemmed 6 Ruffled Compote – Amyth. (satiny and nice)
270. **M'BURG HOBNAIL SPITTOON – PURP. (RARE AND DESIRABLE; NICE COLOR AND IRID.)**
271. Dugan S Repeat Handled Punch Cup – Amyth. (satiny finish)
272. Dugan Lattice and Daisy Tumbler – Blue (scarce base color; nice)
273. Dugan Peacock at the Fountain Tumbler – Amyth. (satiny finish)
274. *8-1/4" Dugan Lined Lattice Swung Vase – Purp. (nice color and irid.; nice irid.)*
275. *Dugan Floral and Grape 7 Pc. Bulbous Water Set – Blue (VERY RARE; base color for this item)*

**START OF SECOND SESSION**

- \_\_\_\_\_ 276. 10-1/4" Tall Dugan Big Basketweave Swung Vase – White (very scarce; frosty w/ super irid.)
- \_\_\_\_\_ 277. 7-1/4" Dugan Fishscale and Beads Flat Plate – White (very scarce; great irid.; frosty)
- \_\_\_\_\_ 278. 6-3/4" Dugan Persian Garden/ Pool of Pearls Flared Plate – White (scarce; very attractive)
- \_\_\_\_\_ 279. 7" Dugan Grapevine Lattice Low Ruffled Bowl/ Plate – White (super irid.)
- \_\_\_\_\_ 280. 11" Dugan Petal and Fan Lg. 8 Ruffled Bowl w/ Jeweled Heart Ext. – White (excellent item; great shape and frosty irid.)
- \_\_\_\_\_ 281. 11-1/4" Dugan Persian Garden Lg. Ice Cream Bowl – White (very scarce; massive item w/ great irid.)
- \_\_\_\_\_ 282. 9" Dugan Fanciful Flared Plate – White (frosty w/ great irid.)
- \_\_\_\_\_ 283. (3) Dugan Constellation Stemmed Ruffled Compotes – White (THESE ARE RARE!...just kidding – selling choice)
- \_\_\_\_\_ 284. 8-3/4" Dugan Round Up Flared Plate – White (scarce; nice irid.)
- \_\_\_\_\_ 285. 11–11-1/2" Dugan Persian Garden Lg. 8 Ruffled Fruit Bowl – P. Opal. (actually quite scarce; great opal. and color)
- \_\_\_\_\_ 286. Dugan Petal and Fan 7 Pc. 6 Ruffled Berry Set w/ Jeweled Heart Ext. – P. Opal. (scarce, well matched set; nice opal.)
- \_\_\_\_\_ 287. 10-3/4" Dugan Rayed Int./ J.H. Ext. Lg. 6 Ruffled Bowl – P. Opal. (nice opal.)
- \_\_\_\_\_ 288. 10-1/2" Dugan Ski Star Lg. 6 Ruffled Bowl w/ Compass Ext. – P. Opal. (nice color and opal.)
- \_\_\_\_\_ 289. 6" Dugan Ski Star 8 Ruffled Sauce w/ Compass Ext. – P. Opal. (nice opal.)
- \_\_\_\_\_ 290. Dugan Caroline Handled Flower Basket – P. Opal. (rare and desirable; nice opal. and satiny finish)
- \_\_\_\_\_ 291. Dugan Leaf Ray Handled Nappy – P. Opal. (nice opal.)
- \_\_\_\_\_ 292. Dugan Stippled Petals Domed 2 Sided Ruffled Banana Dish – P. Opal. (nice opal.)
- \_\_\_\_\_ 293. Dugan Paneled Cherries 3 Ftd. 6 Ruffled Bowl – P. Opal. (nice opal.)
- \_\_\_\_\_ 294. 6" Tall Dugan Thin Rib Swung Pinched in Top Vase – P. Opal. (desirable shape)
- \_\_\_\_\_ 295. Dugan Fishnet 2 Pc. Epergne w/ 3 in 1 Edge – P. Opal. (very scarce and very attractive; great color and opal.)
- \_\_\_\_\_ 296. Dugan Fishnet Crimped Edge Lily Only – Purp. (scarce part; satiny)
- \_\_\_\_\_ 297. Dugan Fishnet Base Only w/ 3 in 1 Edge – P. Opal. (scarce part; light in color)
- \_\_\_\_\_ 298. 10" Dugan Spirals Swung Vase – P. Opal. (nice opal.)
- \_\_\_\_\_ 299. Dugan Basketweave Miniature Handled Flower Basket – Mari.
- \_\_\_\_\_ 300. **DUGAN QUILL HANDLED WATER PITCHER – DK. MARI. (VERY RARE AND VERY DESIRABLE; GREAT DETAIL, COLOR AND IRID.)**
- \_\_\_\_\_ 301. Dugan Quill Tumbler – Mari. (rare and desirable; nice color and irid.)
- \_\_\_\_\_ 302. Dugan Floral and Grape 7 Pc. Bulbous Water Set – Mari. (normal color)
- \_\_\_\_\_ 303. 8-1/2" Dugan Pony 6 Ruffled Bowl – Dk. Mari. (nice color)
- \_\_\_\_\_ 304. Dugan Ski Star Domed Handgrip Plate – Dk. Mari/ Opal. (super color; super opal. and irid.)
- \_\_\_\_\_ 305. 8-1/4" Dugan Brooklyn Bridge 10 Ruffled Bowl – Dk. Mari. (very scarce and has a bright radium type irid.)
- \_\_\_\_\_ 306. 6-1/4" Dugan Ski Star Flared Plate w/ Compass Ext. – P. Opal. (scarce; nice opal. and shape)
- \_\_\_\_\_ 307. 6-1/2" Dugan Pods and Posies Flat Plate – P. Opal. (very scarce; nice irid. and great opal.)
- \_\_\_\_\_ 308. 6-1/2" Dugan Persian Garden Flared Plate – Mari. (nice satiny finish)
- \_\_\_\_\_ 309. 9" Dugan Single Flower Ext. Bowl w/ 3 in 1 Edge and Enam. Decor. – P. Opal. (scarce w/ attractive floral decor.)
- \_\_\_\_\_ 310. 9" Dugan Round Up Flat Plate – Blue (very scarce; flat w/ satiny finish)
- \_\_\_\_\_ 311. 9" Dugan Round Up Flat Plate – P. Opal. (very scarce; really nice color and opal.)
- \_\_\_\_\_ 312. 8-1/2" Dugan Round Up Low 10 Ruffled Bowl – P. Opal. (average color and opal.)
- \_\_\_\_\_ 313. 9" Dugan Windflower Flat Plate – Blue (very scarce w/ a nice satiny finish)
- \_\_\_\_\_ 314. 8-1/2" Dugan Apple Blossom Twig Low Ice Cream Shaped Plate – P. Opal. (nice irid. and opal.)
- \_\_\_\_\_ 315. **FENTON ENAMELED FORGET-ME-NOT/ PRISM BAND TANKARD WATER PITCHER – GREEN (RARE AND DESIRABLE; NICE SATINY FINISH AND OPERATION)**
- \_\_\_\_\_ 316. Forget-Me-Not Enameled Tumbler – Green (nice
- \_\_\_\_\_ 317. **FENTON ZIG ZAG ENAMELED COLUMBINE HANDLED WATER PITCHER – BLUE (VERY SCARCE W/ REALLY NICE IRID. AND DECOR.)**
- \_\_\_\_\_ 318. Fenton Enameled Prism Band Tumbler – Blue (scarce)
- \_\_\_\_\_ 319. Fenton Enameled Prism Band Tumbler – Mari.
- \_\_\_\_\_ 320. Fenton Diagonal Band/ Enam. Iris Tankard Water Pitcher – Mari. (rare and desirable; a bit light in color)
- \_\_\_\_\_ 321. Fenton Lotus and Grape 4 Sided Handled Bon Bon – Lime Green/ Mari. (odd base color; neat)
- \_\_\_\_\_ 322. Fenton Birds and Cherries 4 Sided Handled Bon Bon – Green (nice color and irid.)
- \_\_\_\_\_ 323. Fenton Birds and Cherries 2 Sided Handled Card Tray – Amyth. (nice color and irid.)
- \_\_\_\_\_ 324. Fenton Pond Lily 2 Sided Handled Card Tray – White (scarce shape; nice average irid.)
- \_\_\_\_\_ 325. **FENTON PERSIAN MEDALLION 4 SIDED HANDLED BON BON – RED (RARE AND DESIRABLE; NICE DARK COLOR AND SATINY IRID.)**
- \_\_\_\_\_ 326. **FENTON ORANGE TREE HANDLED SHAVING MUG – RED SLAG (RARE AND VERY DESIRABLE; IRID. A BIT LIGHT)**
- \_\_\_\_\_ 326A. **FENTON PANTHER FTD. RUFFLED IND. BERRY BOWL – RED (ABSOLUTELY FANTASTIC EXAMPLE – ONE OF THE BEST)**
- \_\_\_\_\_ 327. 6-1/4" **FENTON ACORN DEEP ROUND BOWL – RED (VERY ATTRACTIVE EXAMPLE BRIGHT COLOR AND IRID.)**
- \_\_\_\_\_ 327A. **FENTON BLACKBERRY SPRAY 6-RUFFLED HAT – REVERSE AMB. OPAL. (EXTREMELY RARE COLOR; NICE EXAMPLE W/ GREAT IRID.)**
- \_\_\_\_\_ 328. Fenton Holly 2 Sided Hat – Red (scarce; satiny finish)
- \_\_\_\_\_ 329. 6-5/8" Fenton Stippled Rays 6 Ruffled Sauce – Reverse Amberina (odd base color – different)
- \_\_\_\_\_ 330. **FENTON STRETCH 1/4 LB. COVERED CANDY DISH – RED (VERY RARE ITEM; GREAT COLOR W/ A DARK SATINY FINISH)**
- \_\_\_\_\_ 331. **FENTON HOLLY GOBLET SHAPED STEMMED COMPOTE – RED (RARE AND DESIRABLE; DARK OVERLAY W/ NICE BASE COLOR)**
- \_\_\_\_\_ 332. Fenton Holly 6 Ruffled Hat – Red (very scarce and desirable; nice color)
- \_\_\_\_\_ 333. 9" Fenton Holly 8 Ruffled Bowl – Brick Red (very scarce; satiny irid.)
- \_\_\_\_\_ 334. Fenton Blackberry Spray 6 Ruffled Hat – Red (very scarce and desirable; dark satiny finish)
- \_\_\_\_\_ 335. Fenton 2 Row Open Edge 6 Ruffled Hat – Red (scarce; has a satiny finish)
- \_\_\_\_\_ 336. Fenton 2 Row Open Edge Large Sized 2 Sided Hat – Celeste Blue (rare and desirable color; very attractive)
- \_\_\_\_\_ 337. Fenton 2 Row Open Edge 4 Sided Square Hat – Ice Green (very scarce and desirable; nice color and irid.)
- \_\_\_\_\_ 338. Fenton 2 Row Open Edge 6 Ruffled Hat – Aqua/Mari. (scarce base color)
- \_\_\_\_\_ 339. Fenton 2 Row Open Edge 2 Sided Hat – Lt. Aqua; Dk. Mari. (scarce base color)
- \_\_\_\_\_ 340. Fenton Blackberry 2 Row Open Edge 6 Ruffled Hat – Green (very scarce base color; satiny)
- \_\_\_\_\_ 341. Fenton 2 Row Open Edge J.I.P. Hat – Mari./ Vaseline (nice base color and overlay)
- \_\_\_\_\_ 342. Fenton 2 Row Open Edge 4 Sided Hat – Blue (nice shape)
- \_\_\_\_\_ 343. Fenton 2 Row Open Edge 6 Ruffled Hat – Mari
- \_\_\_\_\_ 344. Fenton Orange Tree Stemmed Goblet – Blue (scarce color)
- \_\_\_\_\_ 345. **FENTON ORANGE TREE LG. FTD. RUFFLED FRUIT BOWL – GREEN (VERY RARE BASE COLOR; HAS A SATINY OVERLAY)**
- \_\_\_\_\_ 346. Fenton Flowers (Orange Tree) Ftd. Rose Bowl – Green (very scarce color w/ pretty good feet)
- \_\_\_\_\_ 347. **FENTON ORANGE TREE FTD. HATPIN HOLDER – GREEN (VERY RARE AND VERY DESIRABLE; REALLY TOUGH!)**
- \_\_\_\_\_ 348. Fenton Orange Tree Ftd. Hatpin Holder – Mari. (nice color and irid.)
- \_\_\_\_\_ 349. Fenton Orange Tree Handled Loving Cup – Mari. (scarce; nice color and irid.)
- \_\_\_\_\_ 350. **9-1/4" FENTON ORANGE TREE W/ TRUNK FLAT PLATE – MARI. (ONE OF THE BETTER EXAMPLES YOU'LL FIND – REALLY NICE ITEM)**
- \_\_\_\_\_ 351. Fenton Orange Tree 8 Pc. Ruffled Punch Set – Dk. Mari. (scarce set; attractive)
- \_\_\_\_\_ 352. Fenton Orange Tree Handled Flared Standard Mug – Dk. Mari. (great color and irid.)
- \_\_\_\_\_ 353. Fenton Orange Tree Handled Flared Standard Mug – Amberina (odd base color; sorta brick red)
- \_\_\_\_\_ 354. Fenton Orange Tree Handled Mug – Lt. Mari.
- \_\_\_\_\_ 355. Fenton Orange Tree Handled Shaving Mug – Lt., Lt. Amyth. (really odd item; haven't seen one like it)
- \_\_\_\_\_ 356. Fenton Orange Tree Handled Flared Mug – Blue
- \_\_\_\_\_ 357. 9" Fenton Orange Tree Flared Plate – White (very scarce; nice irid.)
- \_\_\_\_\_ 358. 9" Fenton Orange Tree 6 Ruffled Bowl – White (frosty; satiny irid.)

359. 9" Fenton Orange Tree 6 Ruffled Bowl – Blue (nice color and irid.)
360. 9-1/2" Fenton Orange Tree Flat Plate – Blue (very scarce and nice; great detail, color and irid.)
361. Fenton Enameled Chrysanthemum 7 Pc. Bulbous Water Set – Dk. Mari. (pretty scarce set w/ great color and irid.)
362. Fenton Enam. Magnolia and Drape 6 Pc. Bulbous Water Set – Mari. (scarce set w/ nice color and irid.)
363. 7-1/2" Tall 3 Diamond and Bows Swung Vase – Mari.
364. 7" Tall 3 Diamond and Bows Swung Vase – Clamb.
365. **FENTON (FOR LEVAY) POPPY GONE WITH THE WIND LAMP – AQUA. OPAL. (A RARE NEWER ITEM THAT YOU DON'T SEE!)**
366. 11-1/2" Tall Fenton Plume Panels Swung Vase – Green (scarce; nice example)
367. 10" Tall Fenton April Showers Swung Vase – Green (nice color and irid.)
368. 9-1/2" Tall Fenton Rustic Swung Vase – White (scarce; nice irid.)
369. 9" Fenton Cherry Chain Lg. Ice Cream Shaped Bowl – White (very scarce; frosty and tough to find)
370. 9-1/4" Fenton Peacock at the Urn Flat Plate – White (very scarce; nice irid. and frosty)
371. 8-1/2" Fenton Peacock at the Urn 6 Ruffled Bowl – White (scarce w/ nice irid.)
372. Fenton Peacock at the Urn Stemmed Ruffled Compote – White (scarce; nice irid.)
373. 8" Fenton Peacock at the Urn Ice Cream Shaped Bowl – Amyth. (satiny irid.; scarce shape and color)
374. 8-1/2" Fenton Peacock at the Urn Ice Cream Shaped Bowl – Blue (scarce w/ nice color)
375. **9-1/2" FENTON CAPTIVE ROSE FLAT PLATE – GREEN (RARE AND DESIRABLE; STRONG SATINY IRID. AND REALLY NICE)**
376. 9" Fenton Captive Rose Flat Plate – Blue (scarce; nice average color and irid.)
377. 9" Fenton Captive Rose Flat Plate – Amyth. (scarce; average irid.)
378. 8" Fenton Captive Rose Ice Cream Shaped Bowl – Blue (nice color and irid.)
379. Fenton Captive Rose Stemmed Ruffled Crimped Edge Compote – Amyth. (scarce base color; nice)
380. Fenton Butterfly and Fern 7 Pc. Water Set w/ Collar Bases – Blue (rare and attractive set; really nice)
381. Fenton Butterfly and Fern Tumbler w/ Ground Base – Blue (nice satiny finish)
382. Fenton Butterfly and Fern Tumbler w/ Collar Base – Green (nice satiny finish)
383. Fenton 10 Mums Tumbler – Blue (scarce; nice color and irid.)
384. Fenton Antonia Tumbler – Dk. Mari. (really nice color and irid.)
385. **7-3/4" FENTON "ILLINOIS SOLDIERS AND SAILORS HOME – QUINCY, ILL." ADVERTISING PLATE – BLUE (RARE AND DESIRABLE; NICE COLOR AND IRID. – TOUGH!)**
386. **6-1/2" FENTON 1910 DETROIT BPOE ELKS ICE CREAM SHAPED BOWL – AMYTH. (RARE AND VERY DESIRABLE; GREAT SATINY FINISH)**
387. 8-3/4" Fenton Dragon and Strawberry Round Flared Bowl – Dk. Mari. (rare shape w/ great color and irid.; nice)
388. 8-3/4" Fenton Dragon and Lotus 8 Ruffled Bowl – Dk. Mari. (nice color and irid.)
389. 8-3/4" Fenton Heart and Vine Bowl w/ 3 in 1 Edge – Amyth. (satiny and nice)
390. **9" FENTON CORAL FLAT PLATE – DK. MARI. (RARE AND AN EXCELLENT IRID. – REALLY ONE OF THE BETTER EXAMPLES)**
391. **9-3/4" FENTON HOLLY FLAT PLATE – DK. MARI. (SUPER, SUPER EXAMPLE W/ GREAT IRID.)**
392. 9-1/2" Fenton Holly Flared Plate – Green (rare and desirable; nice color and irid.)
393. 9-3/4" Fenton Holly Flared Plate – Amyth. (rare and desirable; nice color and irid.)
394. 9-1/2" Fenton Holly Flat Plate – Blue (very scarce; nice color and irid.)
395. 10" Fenton Holly Flat Plate – White (very scarce; nice color and irid.)
396. 9" Fenton Holly 8 Ruffled Bowl – Green (nice color and irid.)
397. 8-1/2" Fenton Holly Ice Cream Shaped Bowl – Amyth. (nice color and irid.)
398. 12" Tall Fenton Diamond Point Columns Swung Vase – Mari./ Lime Green
399. 10" Tall Long Thumbprint Swung Vase – Mari.
400. Fenton G&C Small Size Ftd. Ruffled Fruit Bowl – Green (very scarce; nice color and irid. – has Persian medallion int.)
401. 8" Fenton G&C Ball Ftd. 8 Ruffled Bowl – Vaseline/ Mari. (actually quite a rare base color)
402. 7-1/2" Fenton G&C Low 8 Ruffled Bowl – Mari./ Aqua. (nice base color and irid.)
403. 7-1/2" Fenton G&C Low 8 Ruffled Bowl – Lt. Mari./ Aqua. (average color and irid.)
404. 6-1/2" Fenton Acorn Ice Cream Shaped Bowl – Mari./ Aqua. (lighter irid.; scarce)
405. 9-1/2" Fenton Leaf Chain Flat Plate – White (very scarce; nice frosty finish and irid.)
406. 9-1/2" Fenton Leaf Chain Flat Plate – Clamb. (scarce; average color and irid.)
407. 8-3/4" Fenton Leaf Chain 6 Ruffled Bowl – White (scarce w/ really nice irid.)
408. 7" Fenton Leaf Chain 6 Ruffled Bowl – White (super, super irid.; a rare size)
409. 7-3/4" Fenton Leaf Chain Flat Plate – Dk. Mari. (satiny finish)
410. 6-1/2" Fenton Leaf Chain I.C. Shaped Bowl – Aqua/ Lt. Mari. (average irid.; scarce)
411. Fenton Rose Spray J.I.P. Compote – Ice Green (very scarce and desirable; nice)
412. Fenton Rose Spray J.I.P. Compote – Celeste Blue (very scarce and desirable; nice)
413. Fenton Rose Spray J.I.P. Compote – White (scarce and very desirable)
414. Fenton Rose Spray Stemmed Goblet Shaped Compote – Mari.
415. **10-3/4" FENTON PERSIAN MEDALLION CHOP PLATE – BLUE (VERY SCARCE; NICE SIZE, DETAIL AND IRID.)**
416. 7-1/2" Fenton Vintage Grape Flat Plate – Blue (scarce; has a sorta radium finish)
417. 7-1/2" Fenton Vintage Grape Flat Plate – Amyth. (scarce; average irid.)
418. 9-3/4" Fenton Cherry Chain Lg. Ice Cream Bowl – Blue (attractive item; satiny finish)
419. 6-1/4" Fenton Cherry Chain Flared Plate – Blue (scarce; has a satiny finish)
420. 11" Fenton Stag and Holly Lg. Ball Ftd. 8 Ruffled Bowl – Smokey Blue/ Mari. (very odd base color; really different)
421. 8" Fenton Stag & Holly Ice Cream Shaped Spatula Ftd. Bowl – Amyth. (scarce; nice shape w/ a satiny finish)
422. 7-3/4" Fenton Stag and Holly 8 Ruffled Spatula Ftd. Bowl – Blue (a dark example which is very attractive)
423. 7" Fenton Lions 6 Ruffled Bowl – Mari. (scarce; satiny)
424. Fenton Butterfly and Berry 7 Pc. Water Set – Mari. (nice color and irid.)
425. Fenton Lattice and Grape 7 Pc. Tankard Water Set – Blue (rare and desirable set; has a satiny finish)
426. Fenton Kittens Cut and Saucer – Dk. Mari. (rare; really nice color; irid. and detail)
427. Fenton Kittens Cup and Saucer – Mari. (rare; more of an average example)
428. Fenton Kittens Saucer Only – Mari. (scarce part; average irid.)
429. Fenton Apple Tree 7 Pc. Bulbous Water Set – Dk. Mari. (scarce and attractive set)
430. 6-1/4" Fenton Sailboats Flat Plate – Mari. (very scarce; has a satiny finish)
431. 6-1/4" Fenton Pine Cone Flared Plate – Blue (scarce; satiny)
432. 6-1/4" Fenton Pine Cone Flat Plate – Mari. (satiny)
433. Fenton Vintage Small Size Single Lily Epergne – Green (very scarce w/ average irid.)
434. 10" Fenton Fine Rib Standard Swung Vase – Aqua/ Mari. (scarce base color; nice)
435. 10-1/2" Fenton Two Flowers Lg. Ball Ftd. 8 Ruffled Bowl – Elec. Blue (really nice example – nice irid. and detail)
436. Pair 8-1/2" Fenton Florentine Stretch Candlesticks – Ice Green (very attractive pair – great color and irid.)
437. Fenton Miniature Blackberry Compote – Blue (satiny; scarce)
438. (3) Fenton Apple Tree Tumblers – Lt. Mari. (selling so much each)
439. Misc. Books to be Sold Choice.



Lot #386



Lot #95



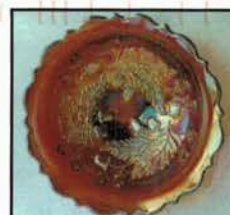
Lot #390



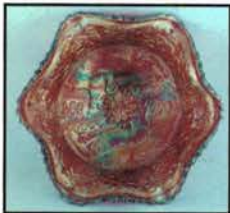
Lot #385



Lot #375



Lot #327



Lot #326A



Lot #20



Lot #25



Lot #65



Lot #270



Lot #57



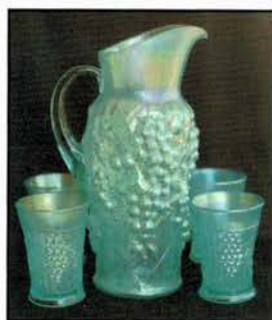
Lot #315



Lots #48A, 48B



Lot #70



Lot #85



Lot #317



Lots #15, 347

# BURNS

AUCTION SERVICE  
P.O. BOX 608 • BATH, NEW YORK 14810

## Lincoln Land Convention Auction

June 8 & 9, 2001

Milwaukee, Wisconsin

First Class Mail  
U.S. Postage  
PAID  
Eugene, Oregon  
Permit No. 305

LEE MARKLEY  
BOX 306  
MENTONE IN 46539



Lot #327A