



Lot #155



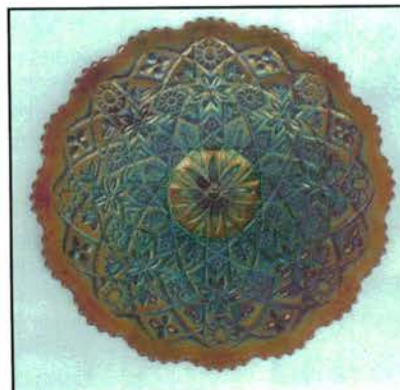
Lot #260



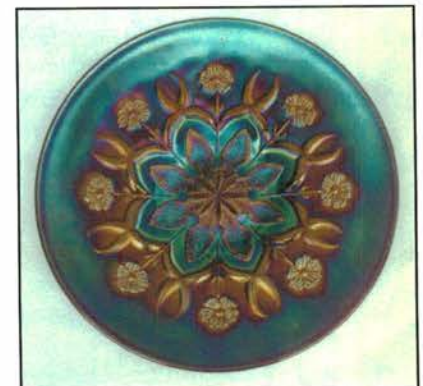
Lot #162



Lot #30



Lot #170



Lot #168

BURNS

AUCTION SERVICE

Keystone Carnival Glass Club Convention Auction

**Friday & Saturday
May 25 & 26, 2001**

**Friday: 4:00 P.M. Preview
6:30 P.M. Auction—Lots 1–150**

**Saturday: 8:00 A.M. Preview
9:00 A.M. Auction—Lots 151–End**

at the

Holiday Inn – Morgantown

Morgantown Road

Morgantown, Pennsylvania 19543

(Just 1 mile south of PA Turnpike – Exit 22 on Route 10)

(610) 286-3000 or

for Reservations Only: (800) 339-0264

Summer's Coming... and so are we—to the Keystone Carnival Glass Convention to be held at the Holiday Inn in Morgantown, Pennsylvania.

This year we have a nice selection to be offered with no minimums or reserves. The glass is from the Bob Greenwood Collection from New York as well as a consignment from Florida. A nice selection with something for everyone.

The Holiday Inn of Morgantown, Pennsylvania will host the event. The motel is located just off Pennsylvania Turnpike Exit 22, about 1 mile south on Route 10. For reservations, call the motel direct at (610) 286-3000, or for information on the convention, contact Don Royle at (610) 777-8126.

Mail bids due by Wednesday, May 23, 2001. Pennsylvania sales tax in effect unless dealer exempt.

CHECK OUT BURNS AUCTION SERVICE ON THE WEB!

Visit our new Web site for information on upcoming auctions, complete auction listings and photos of auction highlights. You can e-mail your bids or requests for information.

<http://carnival.ksnews.com/burnsauction> e-mail: brnzauctsv@aol.com

For further information, or if we can be of assistance call or write:

BURNS AUCTION SERVICE

Tom Burns
P.O. Box 608, Bath, NY 14810
(607) 776-7942
Cell #: (607) 731-9302 (do not leave messages)

Bill Richards
44 Water St., Poland, OH 44514
(330) 757-2001
FAX (330)-757-4917

Bill Richards, III
2253 Country Lane, Poland, OH 44514
(330) 755-2620
Email: BRNZAUCTSV@aol.com

Mail Bids honored under the following conditions:

1. No deposit required, Bidders will take full responsibility to honor any and all bids we execute for them. Payment in full plus postage and handling required after notification and before we ship any item to them.
2. Items are bid on in perfect condition with average or above average iridescence OR as listed in the brochures. Bids will not be carried out when damage on an item has been found during the auction. **PEOPLE PRESENT AT AUCTION ARE RESPONSIBLE FOR FINDING ANY PINHEADS, WEAR, SPOTTINESS, MANUFACTURER'S DEFECTS OR ANY OTHER MINOR FLAWS, ETC.**
3. Successful bidders will be notified by collect call from the auctioneer (**so be sure to include the phone number**).
4. Phone inquiries about the glass or any other questions are welcome.
5. If you have some other person at the auction bidding for you, they must pay for the item before taking it.
6. Any terms or conditions given the day of the auction will supersede any previously published information.
7. Mail, e-mail, fax and phone bids are due by Wednesday, May 23, 2001.

- | | |
|--|--|
| _____ 1. Pastel Swan – Blue Opal. (scarce; nice opal.) | _____ 16. 9-1/4" Dugan Stippled Petal Domed Crimped Edge Plate – P. Opal. (scarce shape for this item; nice opal. and irid.) |
| <u>255</u> 2. Pastel Swan – Mari. (very scarce; nice color and finish) | _____ 17. 8" Dugan Ski Star 10 Ruffled Domed Bowl – P. Opal. (really nice opal. and irid.) |
| <u>1100</u> 3. PASTEL SWAN – TEAL (RARE COLOR; NOT MANY KNOWN) | _____ 18. Dugan Ski Star Domed 4 Sided Banana Dish – P. Opal. (really nice opal. and irid.) |
| _____ 4. Dugan Grapevine Lattice Tumbler – Amyth. (satiny, silvery) | _____ 19. 9" Dugan Double Stem Rose Domed 10 Ruffled Bowl – White (great irid.; nice) |
| _____ 5. 9" DUGAN APPLE BLOSSOM TWIGS BOWL W/ 3 IN 1 PLAIN EDGE AND BASKETWEAVE EXT. – PURP. (AN ABSOLUTE BEAUTY; SUPER IRID. AND NICE) | _____ 20. 9" DUGAN CAROLINA DOGWOOD DOMED 10 RUFFLED BOWL – PURP. (SUPER IRID.; MAY HAVE ROUGHNESS ON BASE) |
| _____ 6. 8-3/4" Dugan Round Up Low Ruffled Plate – Lt. Amyth./ Horehound (odd base color; very different) | _____ 21. (6) Dugan Dahlia Ftd. Ind. Berry Bowls – Amyth. (scarce; selling so much each for set) |
| _____ 7. 8-1/2" Dugan Round Up Low Ruffled Plate – P. Opal. (opal. along edge; lighter overlay) | _____ 22. Dugan Constellation Stemmed 6 Ruffled Compote – White (scarce; super irid.) |
| _____ 8. 9" Dugan Fanciful Low Ruffled Bowl/ Plate – White (scarce; frosty w/ great irid.) | _____ 23. 7" Dugan Grapevine Lattice Low Ruffled Bowl Plate – White (super irid.) |
| _____ 9. Dugan Puzzle Stemmed Round Handled Bon Bon – Blue (very scarce base color; average irid.) | _____ 24. 7-1/2" Tall Dugan Vining Twigs Swung Vase – White (scarce; super irid.) |
| _____ 10. DUGAN MAPLE LEAF COVERED BUTTER DISH – BLUE (RARE COLOR FOR THIS ITEM; NICE IRID.) | _____ 25. 9" DUGAN FANCIFUL LOW RUFFLED BOWL/ PLATE – P. OPAL. (VERY SCARCE ITEM; NICE OPAL. AND IRID.) |
| _____ 11. Dugan Stork in the Rushes Covered Butter Dish – Mari. (rare item in this shape; small chip on base) | _____ 26. 7-1/4" Dugan Fishscale Plate w/ T.C.E. – P. Opal. (scarce; nice opal. and irid.) |
| _____ 12. (2) Dugan Vintage Grape Covered Powder Jars – Mari. (selling choice; one is darker) | _____ 27. Dugan Persian Garden Ruffled Fruit Bowl and Base – Purp. (scarce; base chipped; average top irid.) |
| _____ 13. 9" Tall Dugan Twig Swung Bud Vase – Amyth. (nice satiny irid.) | _____ 28. Dugan Tall U.S. Glass Stretch Paneled Stemmed Compote – Vaseline/ Ice Green (really neat base color that glows) |
| _____ 14. Dugan Golden Harvest 9 Pc. Wine Set – Mari. (scarce complete set plus one glass) | _____ 29. Czech Castle Scene Lg. Dome Light Shade – Mari. (large size; perfect w/ great decoration) |
| _____ 15. Dugan Butterfly and Tulip Ftd. Deep Round Bowl w/ I.F.F. Ext. – Mari. (very scarce and desirable; tiny chip on one leg) | |

30. **N ACORN BURR 8 PC. PUNCH SET – LT. AMYTH. (RARE AND VERY DESIRABLE; LIGHTER BASE COLOR W/ GOLD HIGHLIGHTS)**
31. N Memphis Punch Base Only – Ice Green (rare part w/ great color and irid.)
32. N Memphis Handled Punch Cup – Ice Green (scarce color)
33. N Memphis Handled Punch Cup – Ice Blue (scarce color)
34. N Peacock at the Fountain Sugar Base Only – White (scarce part)
35. **N PEACOCK AT THE FOUNTAIN 5 PC. WATER SET – PURP. (VERY DESIRABLE; SUPER COLOR AND IRID., (2) TUMBLERS AVERAGE)**
36. **N PEACOCK AT THE FOUNTAIN 4 PC. TABLE SET – DK. MARI. (VERY SCARCE AND DESIRABLE SET; NICE IRID. AND COLOR)**
37. N Peacock at the Fountain Tumbler – Dk. Mari. (nice example)
38. N Peacock at the Fountain Punch Base Only – Purp. (super irid. w/ blue highlights)
39. N Greek Key 8 Ruffled Bowl w/ Basketweave Ext. – Purp. (scarce; nice color w/ goldish highlights)
40. **N GRAPE & GOTHIC ARCHES HANDLED WATER PITCHER – BLUE/ ELEC. BLUE (VERY SCARCE W/ NICE BLUE HIGHLIGHTS)**
41. N G&C Stippled Handled Punch Cup – Elec. Blue (very scarce item; nice blue highlights)
42. N G&C Ftd. Hatpin Holder – Purp. (scarce w/ nice irid.; slight roughness on feet)
43. N G&C Ftd. Hatpin Holder – Purp. (scarce w/ nice irid.; slight roughness on feet)
44. N G&C Ftd. Hatpin Holder – Dk. Mari. (super color and irid.)
45. N G&C Covered Powder Jar – Green (very scarce in this color; nice)
46. N G&C Lg. Covered Compote – Purp. (very scarce and very desirable w/ nice irid.)
47. N G&C Covered Sweetmeat Compote – Purp. (scarce; nice color and irid.)
48. 7-1/2" N G&C 2 Sided Banana Dish w/ Basketweave Ext. – Amyth. (scarce shape w/ goldish highlights)
49. N Singing Bird Handled Mug – Purp. (nice color)
50. **N THREE FRUITS STIPPLED PLATE W/ RIBBED EXT. – BLUE (RARE AND DESIRABLE; NICE COLOR AND IRID.)**
51. **N THREE FRUITS MEDALLION STIPPLED RUFFLED BOWL W/ MEANDER EXT. – AQUA OPAL. (RARE AND DESIRABLE; NICE LIGHT PASTEL FINISH)**
52. N Wishbone Ftd. Ruffled Bowl w/ Ruffles and Rings Ext. – Amyth. (nice color and irid.; one edge not filled)
53. N Grape & Gothic Arches Covered Handled Sugar Bowl – Green (very scarce part w/ great irid.)
54. N Grape & Gothic Arches Handled Spooner – Green (another tough part; goldish highlights)
55. **N GOOD LUCK STIPPLED BOWL W/ P.C.E. AND NARROW BASE AND RIBBED EXT. – ODD COBALT BLUE (RARE AND DESIRABLE; SILVERY/ GOLD IRID.; NICE)**
56. N Good Luck Bowl w/ P.C.E. and Ribbed Ext. – Dk. Mari. (super color and irid.; very attractive)
57. N Good Luck 8 Ruffled Bowl w/ Ribbed Ext. – Purp. (scarce and desirable w/ bright multi-colored irid.)
58. **8" TALL N DRAPERY SWUNG VASE – ICE GREEN (VERY SCARCE; NICE COLOR AND IRID.)**
59. 8" Tall N Drapery Swung Vase – Dk. Mari. (scarce; very attractive item)
60. **N DRAPERY ROSE BOWL – AQUA OPAL. (RARE AND DESIRABLE PASTEL EXAMPLE)**
61. N Drapery Tri-Cornered Candy Dish – Ice Blue (very scarce; nice color and irid.; pretty good feet)
62. N Oriental Poppy Tumbler – Purp. (satiny; average)
63. N Fine Cut and Roses Ftd. Candy Dish w/ Fancy Int. – White (scarce; one foot may have flake)
64. N 8 Sided Handled Bushel Basket – White (scarce; nice and frosty)
65. **N ROUND HANDLED BUSHEL BASKET – AQUA OPAL. (RARE AND DESIRABLE; NICE COLOR AND IRID.)**
66. **N G&C TABLE SIZE PUNCH BOWL AND BASE – PURP. (ABSOLUTELY BEAUTIFUL OUTFIT; SUPER IRID.)**
67. N G&C 7 Pc. Table Set – Purp. (scarce; nice color and irid.)
68. N G&C Handled Pin Nappy – Purp. (scarce item w/ nice color)
69. N G&C 4 Sided Handled Bon Bon w/ Basketweave Ext. – Purp. (nice color and irid.)
- 2050 70. **N GOOD LUCK 8 RUFFLED BOWL W/ RIBBED EXT. – AQUA (RARE AND VERY DESIRABLE; SUPER PASTEL FINISH AND IRID.)**
71. (3) N Peacock at the Urn Ind. Round Ice Cream Bowls – Elec. Blue (super examples; great irid.; selling choice)
72. **N PEACOCKS 8 RUFFLED BOWL W/ RIBBED EXT. – PURP. (VERY SCARCE AND DESIRABLE; NICE IRID.)**
73. N Peacocks Bowl w/ P.C.E. and Ribbed Ext. – Purp. (very scarce; super irid.; nice)
74. N Peacocks Bowl w/ P.C.E. and Ribbed Ext. – Purp. (very scarce; really nice irid.)
75. **N ROSE SHOW 8 RUFFLED BOWL – PURP. (VERY SCARCE AND DESIRABLE; NICE SATINY FINISH)**
76. N Rose Show 8 Ruffled Bowl – Purp. (rare and desirable; nice satiny finish)
77. 10" N Wild Strawberry Lg. 8 Ruffled Bowl w/ Plain Ext. – Purp. (scarce w/ nice irid.)
78. **7-1/2" N FRUIT AND FLOWERS 6 RUFFLED BOWL W/ BASKETWEAVE EXT. – ELEC. BLUE (VERY SCARCE AND DESIRABLE; GREAT COLOR)**
79. **9-1/2" TALL N DRAPERY VARIANT SWUNG VASE – BLUE (VERY SCARCE AND DESIRABLE ITEM W/ MULTI-COLORED IRID.)**
80. **N HEARTS AND FLOWERS STEMMED 6 RUFFLED COMPOTE – PASTEL MARI. (RARE AND UNUSUAL; LIGHT BASE COLOR W/ GREAT IRID.)**
81. **9" TALL DUGAN BIG BASKETWEAVE SWUNG VASE – PURP. (VERY SCARCE AND VERY DESIRABLE; BRIGHTER MULTI-COLORED IRID.)**
82. **DUGAN FLORAL AND GRAPE 7 PC. BULBOUS WATER SET – BLUE (RARE SET IN THIS COLOR; PRETTY NICE)**
83. Dugan Floral and Grape 7 Pc. Bulbous Water Set – Amyth. (scarce set w/ bright satiny irid.)
84. **6-1/2" DUGAN PODS AND POSIES FLAT PLATE W/ BASKETWEAVE EXT. – P. OPAL. (VERY SCARCE; HAS GREAT IRID. AND OPAL.)**
85. Dugan Persian Garden Ruffled Fruit Bowl and Base – White (very scarce and frosty; has chip on top of base)
86. Dugan Grape Delight 6 Ftd. Ruffled Rose Bowl – Amyth. (nice color and irid.)
87. Imperial Lustre Rose Ftd. Fernery – Blue (scarce base color; average irid.)
88. Imperial Ribbed J.I.P. Vase – Mari. (great irid.)
89. 10" Tall Jenkins Diamond and Daisy Cut Flowers Cylinder Vase – Dk. Mari. (very scarce; excellent irid.)
90. **19" TALL X 5-1/4" BASE 7-1/2" FLARE FENTON RUSTIC SWUNG FUNERAL VASE – DK. MARI. (VERY SCARCE; REALLY NICE COLOR AND IRID.)**
91. Fenton Paneled Dandelion Tankard Water Pitcher – Green (very scarce w/ a nice satiny finish)
92. (2) Fenton Paneled Dandelion Tumblers – Green (scarce; selling choice)
93. Fenton Holly 2 Sided Hat – Mari./ Vaseline (scarce base color; nice irid.)

- _____ 94. **9-1/2" FENTON CHERRY CHAIN LG. ICE CREAM SHAPED BOWL – MARI./ VASELINE (ACTUALLY QUITE A RARE COLOR FOR THIS BOWL)**
- _____ 95. Fenton Orange Tree Handled Loving Cup – Pop Bottle Aqua/ Mari. (unusual item; base color is darker)
- _____ 96. Fenton Orange Tree Handled Loving Cup – Mari (very scarce and desirable; nice irid.)
- _____ 97. 8-1/4" Fenton Orange Tree I.C. Shaped Bowl – Mari. (excellent irid. w/ bright yellow highlights)
- _____ 98. Fenton 2 Row Open Edge J.I.P. Hat – Red (very scarce; nice base color; satiny)
- _____ 99. **7-1/2" FENTON HORSEHEAD MEDALLION FLAT PLATE – MARI. (VERY SCARCE AND VERY DESIRABLE; NICE DETAIL)**
- _____ 100. 10" Fenton Ten Mums Bowl w/ 3 in 1 Edge – Amyth. (very scarce; has bright irid.; nice)
- _____ 101. **9" FENTON RIBBON TIE LOW RUFFLED PLATE – BLUE (RARE ITEM W/ TYPICAL GREAT IRID.; REALLY NICE)**
- _____ 102. Fenton Illusion 4 Sided Handled Bon Bon – Blue (scarce pattern; has chip on edge)
- _____ 103. Fenton Captive Rose Stemmed Compote w/ 3 in 1 Edge – Blue (scarce shape and color)
- _____ 104. Fenton Birds and Cherries Stemmed 6 Ruffled Compote – Amyth. (nice irid.; scarce)
- _____ 105. **FENTON BUTTERFLY & BERRY 7 PC. WATER SET – ODD SMOKEY BLUE W/ SWIRLS (COLOR W/ SWIRLS; IRID. IS SILVERY)**
- _____ 106. 6-3/4" Tall Fenton Butterfly and Berry Swung Vase – Blue (scarce; a very desirable size and shape)
- _____ 107. Fenton Butterfly and Berry Lg. Ftd. Ruffled Berry Bowl w/ B&B Ext. – Green (nice color; scarce)
- _____ 108. Fenton Panther Lg. Ftd. Ruffled Berry Bowl w/ B&B Ext. – Dk. Mari. (nice color; scarce)
- _____ 109. Fenton Blackberry Spray 6 Ruffled Hat – Green (very scarce base color)
- 300 _____ 110. **6-1/4" FENTON PERSIAN MEDALLION FLAT PLATE – BLACK AMYTH. (RARE AND DESIRABLE COLOR; SATINY IRID.)**
- _____ 111. **7-1/4" FENTON PINE CONE FLAT PLATE – BLUE (VERY SCARCE SIZE; HAS SATINY FINISH)**
- _____ 112. **9-1/2" FENTON HOLLY FLAT PLATE – DK. MARI. (VERY SCARCE; NICE DARK COLOR AND IRID.)**
- _____ 113. 9" Fenton Holly 8 Ruffled Bowl – Blue (satiny finish)
- _____ 114. Fenton Holly Stemmed 6 Ruffled Compote – Lt. Aqua Blue/ Mari. (scarce base color; nice overlay)
- _____ 115. **6-1/2" FENTON ACORN DEEP ROUND BOWL – RED SLAG (RARE AND VERY DESIRABLE; DARK BASE COLOR AND IRID.)**
- _____ 116. 10" Fall Fenton Fine Rib Standard Swung Vase – Red (scarce item w/ bright color and irid.; rough on edge)
- _____ 117. Fenton Blueberry Bulbous Handled Water Pitcher – Blue (really nice example but cracked)
- _____ 118. Fenton Blueberry Tumbler – Blue (very scarce w/ nice irid.)
- _____ 119. Fenton 2 Row Open Edge 4 Sided Square Hat – Blue (scarce shape)
- _____ 120. **FENTON KITTENS (2 SETS) CEREAL BOWLS – DK. MARI. (VERY SCARCE ITEM W/ 2 SETS; GREAT COLOR)**
- _____ 121. Fenton Kittens Handled Cup – Mari. (very scarce item w/ nice color and detail)
- _____ 122. Fenton Kittens Saucer – Lt. Mari. (scarce item; lighter in color)
- _____ 123. Fenton Kittens 2 Sided Banana Dish – Mari. (scarce item; nice color and detail)
- _____ 124. Fenton Kittens Swung Toothpick Holder – Mari. (very scarce; nice color and irid.)
- _____ 125. **FENTON FOOTED ORANGE TREE COVERED BUTTER DISH – BLUE (RARE AND VERY DESIRABLE ITEM; PERFECT W/ GREAT COLOR)**
- _____ 126. Fenton Flowers Ftd. Rose Bowl – Mari./ Vaseline (scarce color; feet are damaged)
- _____ 127. 9" Fenton Orange Tree 6 Ruffled Bowl – White (scarce; nice frosty finish)
- _____ 128. Fenton Orange Tree 2 Handled Open Breakfast Sugar – White (very scarce item; nice irid. and detail)
- _____ 129. Fenton Orange Tree Covered Powder Jar – Dk. Mari. (scarce; nice color)
- _____ 130. **FENTON ORANGE TREE FTD. HATPIN HOLDER – BLUE (SCARCE; NICE COLOR; PRETTY GOOD FEET)**
- _____ 131. Fenton Orange Tree Covered Powder Jar – Blue (scarce; nice color and irid.)
- _____ 132. 9" Fenton Peacock and Grape 8 Ruffled Bowl – Blue (nice color and detail)
- _____ 133. 8-1/4" Fenton Peacock and Grape I.C. Shaped Bowl – Mari./ Vaseline (scarce color and shape; has flake under base)
- _____ 134. 8-1/2" Fenton Heart and Vine 6 Ruffled Bowl – Amyth. (satiny finish)
- _____ 135. **FENTON PANELED DANDELION 5 PC. TANKARD WATER SET – BLUE (VERY SCARCE SET W/ NICE COLOR AND IRID.)**
- _____ 136. Fenton Enameled Cherries 7 Pc. Bulbous Water Set – Blue (scarce set w/ excellent decor)
- _____ 137. 10-3/4" Fenton Stag and Holly Lg. 3 Ftd. 8 Ruffled Bowl – Blue (scarce; satiny finish)
- _____ 138. 9" Fenton Peacock at the Urn 6 Ruffled Bowl – White (very scarce; nice frosty finish)
- _____ 139. 8" Fenton Peacock at the Urn I.C. Shaped Bowl – Dk. Mari. (scarce; really nice color and irid.)
- _____ 140. **8-3/4" FENTON DRAGON & LOTUS 8 RUFFLED BOWL – GREEN (EXCELLENT EXAMPLE W/ A BRIGHT IRID.)**
- _____ 141. 9" Fenton Dragon & Lotus 8 Ruffled Bowl – Blue (satiny; nice)
- _____ 142. 9" Fenton Dragon & Lotus 8 Ruffled Bowl – Odd Blue (odd base color)
- _____ 143. 9" Fenton Dragon & Lotus 8 Ruffled Bowl – Dk. Mari. (nice satiny finish)
- _____ 144. 9-1/2" Fenton Cherry Chain 8 Ruffled Bowl – Blue (nice size; satiny irid.)
- _____ 145. 9" Fenton Wild Blackberry 6 Ruffled Bowl – Green (scarce pattern; nice irid.)
- _____ 146. Fenton Vintage Grape Small Size Single Lily Epergne – Green (scarce; has small chip on base)
- _____ 147. Fenton Peacock Tail 6 Ruffled Hat w/ Truckey & Sons Dept. Store Advertising – Green (sorta scarce advertising item)
- _____ 148. 6-3/4" Fenton Lions I.C. Shape Low Bowl – Mari. (satiny irid.)
- _____ 149. Fenton Peacock at the Urn Stemmed Flared Goblet Shaped Compote – Mari./ Powder Blue (scarce base color; chips on base)
- _____ 150. Fenton Rose Spray J.I.P. Stemmed Compote – White (scarce item w/ yellow/ gold highlights)
- START OF SECOND SESSION**
- _____ 151. (4) Fenton Apple Tree Tumblers – Dk. Mari. (nice examples; selling choice)
- _____ 152. **N PEACOCKS 8 RUFFLED BOWL W/ RIBBED EXT. – AMYTH. (VERY SCARCE AND DESIRABLE; SUPER IRID.)**
- _____ 153. 9-1/4" N G&C Variant Plate w/ Basketweave Ext. – Green (scarce; nice color and irid.)
- _____ 154. **N THREE FRUITS 8 RUFFLED BOWL W/ PLAIN EXT. – HONEY AMBER (RARE BASE COLOR W/ GREAT IRID.)**
- 1600 _____ 155. **13-1/2" TALL X 8-3/4" FLARE X 5-1/4" BASE N TREE TRUNK ELEPHANT'S FOOT VASE – PURP. (RARE AND VERY DESIRABLE; SATINY FINISH; GREAT SIZE)**
- _____ 156. N Memphis Ruffled Punch Bowl and Base – Green (very rare; great color; has hairline in top)

157. N Memphis Ruffled Fruit Bowl and Base – Dk. Mari. (scarce w/ great color and irid.)
158. **8-1/4" N STRAWBERRY STIPPLED BOWL W/ P.C.E. AND RIBBED EXT. – DK. MARI. (RARE SHAPE AND SIZE; NICE COLOR)**
159. **9" N THREE FRUITS STIPPLED PLATE W/ RIBBED EXT. – DK. MARI. (VERY SCARCE; REALLY NICE COLOR AND IRID.)**
- 800 160. **9-1/2" N HEARTS AND FLOWERS PLATE W/ RIBBED EXT. – DK. MARI. (RARE AND VERY DESIRABLE; AVERAGE COLOR AND IRID.)**
- 800 161. **N HEARTS AND FLOWERS BOWL W/ P.C.E. AND RIBBED EXT. – ICE BLUE (RARE AND VERY DESIRABLE; GREAT COLOR AND IRID.)**
- 1250 162. **N PEACOCKS BOWL W/ P.C.E. AND RIBBED EXT. – ICE BLUE (VERY RARE AND VERY DESIRABLE; SUPER IRID.)**
163. **N NIPPON BOWL W/ P.C.E. AND RIBBED EXT. – HONEY AMBER (VERY RARE IN THIS COLOR; HAS MANUF CHECK IN BODY)**
164. **6-1/2" IMPERIAL GRAPE FLAT PLATE – PURP. (VERY SCARCE W/ GREAT COLOR AND IRID.)**
- 2300 165. **9-1/4" IMPERIAL GRAPE FLAT PLATE – PURP. (VERY RARE AND VERY DESIRABLE; HAS SUPER COLOR AND IRID.)**
166. **FENTON ORANGE TREE HANDLED STANDARD FLARED MUG – RED (GREAT COLOR AND SCARCE; AVERAGE IRID.)**
167. **6-1/2" FENTON LG. 2 ROW OPEN EDGE I.C. SHAPED BOWL – CELESTE BLUE (VERY DESIRABLE W/ GREAT COLOR AND IRID.)**
- 1500 168. **10-1/2" DUGAN WISHBONE AND SPADES CHOP PLATE – PURP. (A SUPER, SUPER EXAMPLE W/ GREAT IRID.)**
169. **9" DUGAN FANCIFUL FLARED PLATE – PURP. (ONE OF THE BETTER EXAMPLES WE'VE SOLD LATELY)**
- 2750 170. **10-1/2" IMPERIAL HATTIE CHOP PLATE – PURP. (VERY RARE AND VERY DESIRABLE W/ GREAT IRID.)**
171. N Good Luck 8 Ruffled Bowl w/ Ribbed Ext. – Elec. Blue (always popular; has really nice irid.)
172. N Peacocks Bowl w/ P.C.E. and Ribbed Ext. – Mari. (very scarce; nice shape and irid.)
173. N G&C Handled 4 Sided Bon Bon w/ Basketweave Ext. – Green (scarce w/ nice color and irid.)
174. 8" Dugan Six Petals 6 Ruffled Bowl – Amyth. (really nice example; bright irid.)
175. 9-1/2" Fenton Peacock at the Urn Flat Plate – Blue (scarce color and irid.; nice irid. w/blue highlights)
176. 9-1/2" Fenton Peacock at the Urn Flat Plate – Mari. (scarce; nice color and irid.)
177. 7" Fenton Peacock and Dahlia 6 Ruffled Bowl – Aqua/ Mari. (scarce base color w/ a mari. overlay)
178. 8-3/4" Fenton Concord Grape 6 Ruffled Bowl – Dk. Mari. (excellent example; very scarce)
179. 8-1/4" M'burg Mayan I.C. Shaped Bowl – Green (radium; has a bruise)
180. **M'BURG OHIO STAR VASE – PURP. (RARE AND VERY DESIRABLE; AVERAGE IRID.; MAY HAVE SOME SMALL DINGS.)**
- 1335 181. **M'BURG SEACOAST PIN TRAY – GREEN (RARE AND VERY DESIRABLE; PERFECT W/ GREAT COLOR AND IRID.)**
182. M'burg Sunflower Pin Tray – Amyth. (rare but smoothed on one side)
183. M'burg Peacock Tail Variant 6 Ruffled Compote – Amyth. (radium; has chip on base)
184. M'burg Holly Sprig Deep Oval 2 Handled Bon Bon – Amyth. (has roughness on edge)
185. **M'BURG SWIRL HOBNAIL ROSE BOWL – PURP. (EXCELLENT EXAMPLE; GREAT COLOR AND IRID.)**
186. M'burg Holly Sprig 2 Sided 2 Handled Card Tray – Mari. (nice color and irid.)
187. 8" M'burg Blackberry Wreath Deep Round Flared Bowl – Green (satiny finish)
188. **CAMBRIDGE INVERTED STRAWBERRY COVERED POWDER JAR – MARI. (RARE AND DESIRABLE; PERFECT W/ GREAT COLOR)**
189. Cambridge Inverted Strawberry Candlestick – Mari. (rare; damaged under base)
190. Cambridge Inverted Feather Covered Cracker Jar – Green (very scarce and desirable; nice color and irid.)
191. **PHOENIX MOON AND STAR LG. STEMMED ROUND COMPOTE – MARI./ MILK GLASS (RARE ITEM; NICE SIZE; NICE MARI. OVERLAY)**
192. 9-1/4" Westmoreland Scales 6 Ruffled Bowl – Blue Opal. (actually quite a nice example; nice irid.)
193. European Milady Covered Powder Jar – Mari. (scarce item; nice color and irid.)
194. Assortment of (5) Hatpins – Dark (selling choice)
195. **IMPERIAL GRAPE WINE DECANTER AND STOPPER – PURP. (VERY SCARCE; HAS SUPER COLOR AND IRID.)**
196. (3) Imperial Grape Stemmed Wine Glasses – Purp. (nice examples; selling choice)
197. (4) Imperial Grape Stemmed Wine Glasses – Helios Green (selling choice)
198. Imperial Grape Wine Decanter and Stopper – Dk. Mari. (great color and irid.)
199. Imperial Mellen Rib 2 Handled Oval Relish Tray – Smoke (scarce color; super irid.)
200. Imperial Diamond Lace Handled Water Pitcher – Purp. (super color and irid.; scarce)
201. Imperial Grape Water Carafe – Purp. (very scarce; super irid.)
202. Imperial Grape Water Carafe – Purp. (very scarce; nice irid.)
203. Imperial Hobstar Flower Stemmed 6 Ruffled Compote – Purp. (scarce; has super bright irid.)
204. Imperial Hobstar Flower Stemmed 6 Ruffled Compote – Smoke/ Violet (rare base color; irid. is fair)
205. 8-1/4"–8-1/2" Imperial Heavy Grape Flat Plate – Purp. (super color and irid.; very nice)
206. 9" Imperial Pansy 8 Ruffled Bowl – Amyth. (scarce; really nice irid.)
207. 10-1/2" Tall Imperial Beaded Bullseye Swung Vase – Dk. Mari. (super color and irid.)
208. 5-1/4" Tall Imperial Miniature Morning Glory Swung Vase – Green (scarce; nice color)
209. 6-3/4" Tall Imperial Miniature Morning Glory Swung Vase – Dk. Mari. (super irid.)
210. **MAKE (?) LARGE TABLE LAMP W/ CHIPPED ICE PATTERNED SHADE – MARI. (RARE AND UNUSUAL ITEM; NICE COLOR)**
211. Pan Jeanette #2902-2 Candleholders in Original Box – Mari. (newer but neat; has original box)
212. N Peacock at the Fountain Covered Sugar Bowl – Purp. (very scarce and nice; really nice)
213. N Peacock at the Fountain Handled Creamer – Amyth. (scarce; average irid.)
214. N Raspberry Tumbler – Purp. (really nice item)
215. N Raspberry Handled Water Pitcher – Purp. (scarce w/ nice satiny finish)

216. (6) N RASPBERRY TUMBLERS – HOREHOUND (VERY RARE ITEMS; SELLING CHOICE; SUPER)
217. N SPRINGTIME COVERED BUTTER DISH – DK. MARI. (VERY SCARCE W/ SUPER COLOR AND IRID.)
218. 7-1/2" TALL N DRAPERY SWUNG VASE – ICE BLUE (RARE AND VERY DESIRABLE; PERFECT AND NICE)
219. 5-3/4" Tall Fenton Boggy Bayou Squatty Swung Vase – Mari./ Green (unusual; nice)
220. FENTON MILADY 7 PC. TANKARD WATER SET – BLUE (RARE AND VERY DESIRABLE; GREAT BRONZE OVERLAY)
221. 8-1/4" FENTON PERSIAN MEDALLION LG. DEEP ROUND CRIMPED EDGE BOWL – GREEN (RARE COLOR; REALLY NICE IRID.)
222. 10-1/4" Fenton Ten Mums Lg. 6 Ruffled Bowl – Blue (very scarce; has satiny finish)
223. Fenton 2 Row Open Edge Blackberry Hat – Amberina (very scarce and desirable; nice item)
224. 6-1/2" FENTON SAILBOATS FLAT PLATE – BLUE (RARE AND VERY DESIRABLE; FLAT AS A PANCAKE)
225. FENTON FLUFFY PEACOCK 7 PC. BULBOUS WATER SET – AMYTH. (RARE AND DESIRABLE; NICE COLOR AND IRID.)
226. 10-1/4" M'burg Rosiland Lg. 6 Ruffled Bowl – Amyth. (scarce; nice satiny finish)
227. 5" Fall Dugan Big Basketweave Unswung Squatty Vase – Purp. (very scarce size; nice irid.; chip on edge)
228. Fenton Captive Rose Stemmed 6 Ruffled Compote – Amyth. (scarce color for this pattern and shape)
229. Fenton Peacock at the Urn Stemmed 6 Ruffled Compote – Mari.
230. FENTON HOLLY STEMMED 6 RUFFLED COMPOTE – RED/ AMBERINA (RARE AND DESIRABLE; NICE COLOR AND IRID.)
231. FENTON HOLLY STEMMED 6 RUFFLED COMPOTE – GREEN (VERY SCARCE BASE COLOR; NICE IRID.)
232. Fenton Holly Stemmed 6 Ruffled Compote – Mari./ Lime Green (scarce base color w/ mari. overlay)
233. Fenton Holly Stemmed 6 Ruffled Compote – Mari./ Ice Blue (scarce base color w/ mari. overlay)
234. Fenton Holly Stemmed 6 Ruffled Compote – Lt. Mari.
235. Fenton Holly Stemmed 6 Ruffled Compote – Blue (nice irid.)
236. Fenton Holly Stemmed 6 Ruffled Compote – Mari. (off ruffle)
237. FENTON IRIS LG. STEMMED 6 RUFFLED COMPOTE – BLUE (VERY SCARCE COLOR FOR THIS ITEM; NICE)
238. 8" Fenton Dragon & Lotus I.C. Shaped Bowl – Blue (satiny irid.)
239. 7-3/4" Fenton Stag & Holly Spatula Ftd. 8 Ruffled Bowl – Mari. (satiny irid.)
240. FENTON ORANGE TREE HANDLED FLARED SHAVING MUG – LIME GREEN (EXTREMELY RARE BASE COLOR; DON'T REMEMBER SEEING TOO MANY)
241. FENTON ORANGE TREE HANDLED FLARED SHAVING MUG – RED (RARE AND VERY DESIRABLE; IRID. IS SILVERY)
242. Fenton Orange Tree Handled Flared Shaving Mug – Blue (nice color and irid.)
243. (2) Fenton Orange Tree Handled Flared Shaving Mugs – Mari. (nice color; selling choice)
244. Fenton Orange Tree Standard Handled Flared Mug – Brick Red (odd base color w/ above average irid.)
245. FENTON FLOWERS FTD. ROSE BOWL – BLACK (NEVER SEEN THIS BEFORE; OLD AND REALLY NICE)
246. 8-3/4" Fenton Captive Rose 6 Ruffled Bowl – Green (scarce base color; has a rough spot)
247. 8-1/2" Fenton Coin Dot Bowl w/ T.C.E. – Amyth.
248. Fenton Orange Tree Stemmed Ruffled Sherbert – Mari. (scarce shape)
249. 9" Fenton Orange Tree 8 Ruffled Bowl – Blue (satiny finish)
250. 9" FENTON PEACOCK AT THE URN 6 RUFFLED BOWL – ELEC. BLUE (SUPER EXAMPLE FOR THIS PATTERN; NICE)
251. Fenton Persian Medallion 2 Handled 4 Sided Bon Bon – Blue (nice)
252. 8-3/4" Tall Fenton Wide Panel Swung Vase – Mari./ Amber (rare base color; nice mari. overlay)
253. 6-1/4" Fenton Sailboat 6 Ruffled Sauce – Mari.
254. Fenton 2 Row Open JIP Hat – Mari.
255. Fenton Kittens Handled Cup – Dk. Mari. (very scarce; great color and irid.)
256. Fenton Kittens 6 Ruffled Bowl – Mari. (scarce; nice color)
257. 9" M'burg Blackberry Wreath 6 Ruffled bowl – Amyth. (satiny finish)
258. Lot (5) Beaded Handbags – Odd Colors (selling choice; some are nice)
259. Lot (4) Hatpins – Dark (selling choice)
260. N IVY TOWN PUMP – PURP. (ONE OF THE BETTER EXAMPLES I'VE SEEN; SUPER, SUPER)
261. N Singing Birds Handled Mug – Purp. (nice color)
262. N Beaded Cable Ftd. Ruffled Rose Bowl – Blue (scarce color; nice irid.)
263. N Daisy & Plume/ Berry Int. Ftd. Ruffled Rose Bowl – Blue/ Elec. Blue (rare in this color; has small chip on foot)
264. 9-1/2" N Wishbone Bowl w/ P.C.E. and Basketweave Ext. – Mari. (quite a strong example; nice)
265. N DIAMOND POINT HANDLED BUSHEL BASKET – DK. MARI. (ABSOLUTELY SUPER EXAMPLE; PERFECT AND NICE)
266. N ROUND HANDLED BUSHEL BASKET – AQUA OPAL. (RARE AND DESIRABLE; VERY ATTRACTIVE)
267. N Round Handled Bushel Basket – Blue/ Elec. Blue (very scarce; nice color and irid.)
268. N Round Handled Bushel Basket – Dk. Mari. (excellent example; great color and irid.)
269. 8-1/2" N G&C STIPPLED VARIANT BOWL W/ P.C.E. AND RIBBED EXT. – BLUE/ ELEC. BLUE (VERY SCARCE AND DESIRABLE; REALLY NICE)
270. N G&C CANDLE LAMP – AMYTH. (RARE AND DESIRABLE; HAS SATINY FINISH)
271. N (OR DUGAN) G&C PERFUME BOTTLE AND STOPPER – PURP. (RARE, DESIRABLE AND PERFECT; NICE IRID.)
272. (2) N G&C Cologne Bottles and Stoppers – Amyth. (selling choice; one bright and one satiny)
273. N G&C Lg. Oval Dresser Tray – Purp. (scarce w/ great color and irid.)
274. N G&C Covered Powder Jar – Purp. (very scarce; nice color and irid.)
275. N G&C Ftd. Hatpin Holder – Purp. (very scarce w/ nice color and irid.)
276. N G&C Ftd. Hatpin Holder – Dk. Mari. (very scarce w/ nice color and irid.)
277. N G&C Covered Sweetmeat Compote – Purp. (scarce; nice color and irid.)
278. FENTON (?) SMOOTH RAYS STEMMED 6 RUFFLED COMPOTE – AMBER OPAL. (NEVER SEEN THIS ITEM IN THIS COLOR)

- _____ 279. Imperial Diamond Rings Lg. 8 Ruffled Bowl – Smoke (great irid.)
- _____ 280. **8" TALL X 5-1/2" BASE IMPERIAL ZIPPER LOOP KEROSENE LAMP – MARI./ CLEAR (RARE AND DESIRABLE; NICE MARI. FONT)**
- _____ 281. **7-1/2" TALL X 4-1/4" BASE IMPERIAL ZIPPER LOOP KEROSENE LAMP – DK. MARI. (RARE AND DESIRABLE; SUPER COLOR AND IRID.)**
- _____ 282. Imperial Fashion 7 Pc. Water Set – Dk. Mari. (nice color and irid.)
- _____ 283. Dugan Stork in the Rushes Tumbler w/ Beaded Edge – Blue (satiny irid.)
- _____ 284. Dugan Stork in the Rushes Handled Mug – Mari.
- _____ 285. 8-1/4" Tall Dugan Circle Scroll Swung Vase – Purp. (super example but has large flake)
- 506 _____ 286. **DUGAN PASTEL SWAN – P. OPAL. (RARE AND DESIRABLE; REALLY NICE MARI. AND OPAL.)**
- _____ 287. **DUGAN PASTEL SWAN – MARI. (RARE; ESP. W/ SHAPE OF NECK; NICE COLOR)**
- _____ 288. Pastel Swan – Vaseline Opal. (not carnival; great opal.)
- _____ 289. Pastel Swan – Green Opal. (not carnival; nice opal.; scarce)
- _____ 290. **7-3/4–8" DUGAN BORDER PLANTS DOMED 10 RUFFLED BOWL – P. OPAL. (VERY SCARCE; GREAT OPAL. AND MARI. OVERLAY)**
- _____ 291. 9" Dugan Windflower Flat Plate – Mari. (scarce; satiny)
- _____ 292. 8-1/2" Dugan Six Petals 6 Ruffled Bowl – White (frosty w/ great irid.)
- _____ 293. Dugan Constellation Stemmed 6 Ruffled Compote – White (frosty w/ great irid.)
- _____ 294. Dugan Vintage Grape Covered Powder Jar – Mari.
- _____ 295. 9" Tall Dugan Pulled Loop Swung Vase – P. Opal. (nice opal.)
- _____ 296. 6" Dugan Smooth Rays Int./ J.H. Ext. 6 Ruffled Sauce – P. Opal. (nice opal.)
- _____ 297. 5-1/2" Dugan Smooth Rays Int./ J.H. Ext. Bowl w/ Crimped Edge – P. Opal. (nice opal.)
- _____ 298. Dugan Question Mark Handled Stemmed Bon Bon – Mari.
- _____ 299. Dugan Cherry Wreath Lg. Oval Master Berry Bowl – Purp. (nice satiny finish)
- _____ 300. **FENTON ORANGE TREE FTD. RUFFLED FRUIT BOWL – BLUE (SCARCE W/ NICE COLOR AND IRID.)**

NOTES

FOR THE RESULTS OF THIS OR ANY BURNS AUCTION SERVICE AUCTION SEND A S.A.S.E. AND \$3.00 (INCLUDE NAME OR DATE OF AUCTION) TO:

EMMA TILTON
P.O. BOX 273
GNADENHUTTEN, OH 44629

VISIT US ON THE WEB!

<http://carnival.ksnews.com/burnsauction>
for pictures, complete listings and upcoming auctions



Lot #165



Lot #160



Lot #163



Lot #265



Lot #152



Lot #169



Lot #101



Lot #5



Lot #240



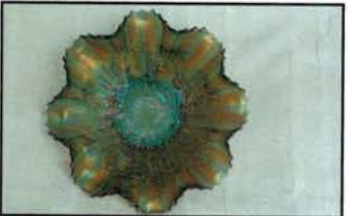
Lot #269



Lot #180



Lot #35



Lot #70



Lot #224



Lot #181



Lot #66

BURNS

AUCTION SERVICE
P.O. BOX 608 • BATH, NEW YORK 14810

**Keystone
Convention Auction
May 25 & 26, 2001
Holiday Inn – Morgantown
Morgantown Road
Morgantown, Pennsylvania 19543**



Lot #3

First Class Mail
U.S. Postage
PAID
Eugene, Oregon
Permit No. 305

**LEE MARKLEY
BOX 306
MENTONE IN 46539**

10-1139247

