

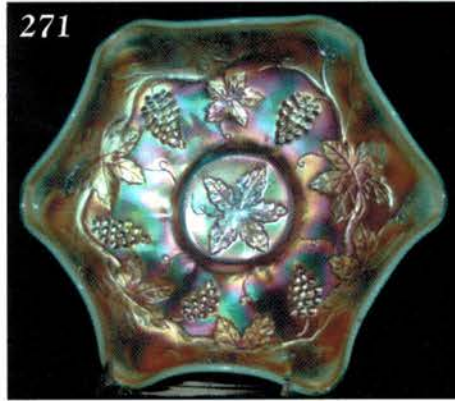
CARNIVAL GLASS AUCTION

Saturday, May 19, 2001 9:00 a.m., C.D.T.

231



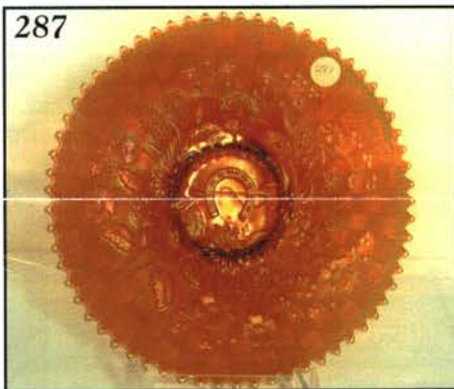
271



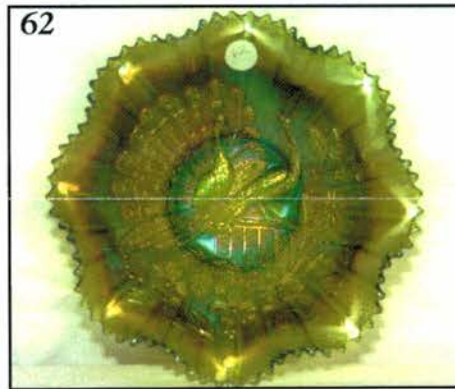
274



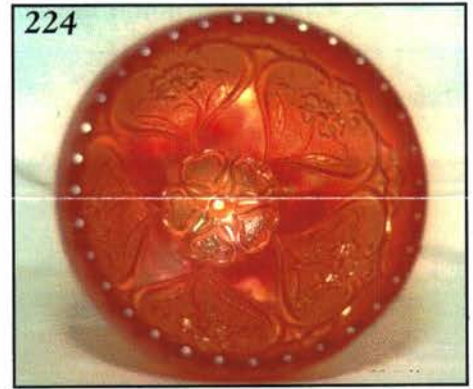
287



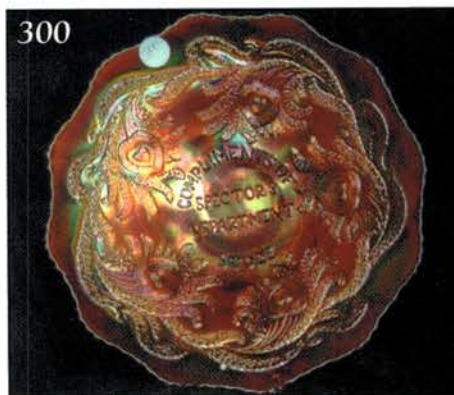
62



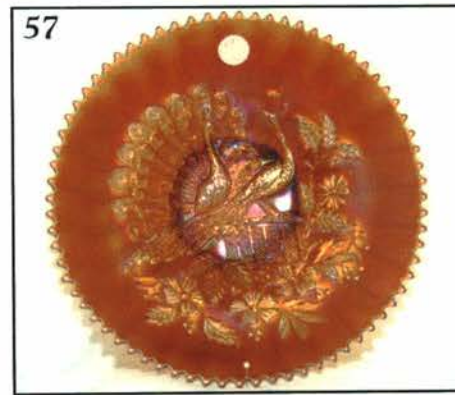
224



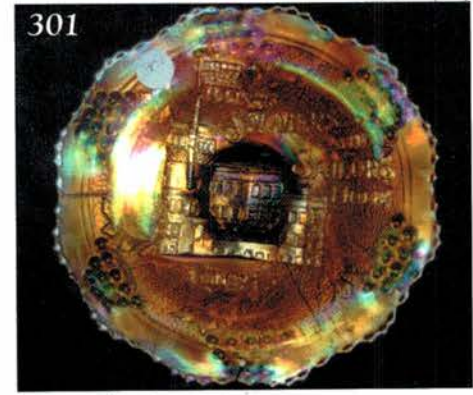
300



57



301



Held Inside the Mickey Reichel Auction Center, Boonville, Missouri

Office: 660-882-5292 • Home: 660-882-5283

Direct e-mail: mreichel@undata.com

NEW WEB SITE ON: <http://www.yourauctionpage.com/reichel>



Held Inside the Mickey Reichel Auction Center

1 Mile North of I-70 on Hwy. 5, Exit 101, Boonville, Missouri • 20 Miles West of Columbia, MO on I-70

Preview Friday 12 p.m. - 6 p.m. and 7:30 a.m. - 9:00 a.m. Day of Auction



TERMS: Cash or Good Check, VISA and MasterCard accepted.



3% Handling Fee on all purchases except for payment of cash or check. Proper I.D. required.

WEBSITE: www.yourauctionpage.com/reichel

ABSENTEE BID POLICY:

WRITE IN BIDS: If you are unable to attend the auction, we will be happy to accept absentee bids which must be received by THURSDAY, MAY 17, 2001. Don't Delay. E-Mail: mreichel@undata.com

FOR AUCTION PRICE RESULTS: Send \$3.00 and Large S.A.S.E. to 516 Third Street, Boonville, MO 65233-1536

PLEASE NOTE: There is a \$5 handling charge for each successful bid which will be added to the selling price for all write-in bids. This is in addition to the cost of postage, insurance and packing. Your write-in bid will be entered just as if you are present and bidding. Successful bidders will be notified in 1 to 3 days by the auctioneer (so be sure to include your phone number). Direct mail bids to Auctioneer Mickey Reichel, 516 Third Street, Boonville, MO 65233-1536. Terms: Cash or Check accepted with proper I.D. and Social Security Number and References. Announcements made day of the auction supercede all printed material. Not Responsible for Accidents or Sold Items.

No return on any items once they leave the Auction Center (No Exceptions).****

Call for additional information: 660-882-5292 days or 660-882-5283 evenings before 9:00 p.m.

FAX: 660-882-5292 (evening hours start FAX transmission after beep)

MAIL BIDS: Items are bid on in perfect condition with average or above iridescence OR as listed in the brochures. Bids will not be carried out when damage on an item has been found during the auction.

PEOPLE PRESENT AT AUCTION ARE RESPONSIBLE FOR FINDING ANY PINHEADS, WEAR, SPOTTINESS, MANUFACTURER'S DEFECTS OR ANY OTHER MINOR FLAWS, ETC. *****

NOTE: Read each line, as we have accentuated the type of no particular piece, all are special.

Make Reservations EARLY at one of these local motels:

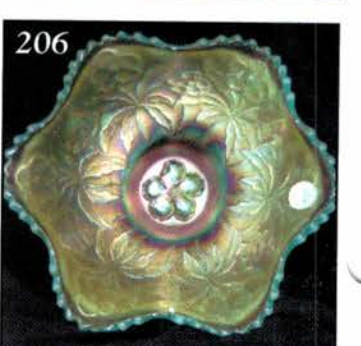
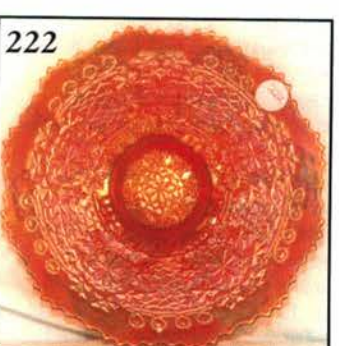
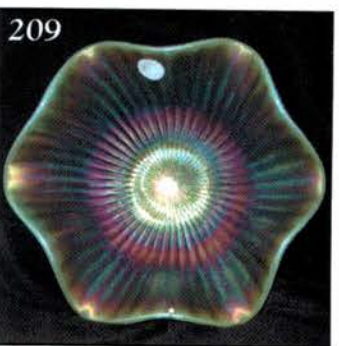
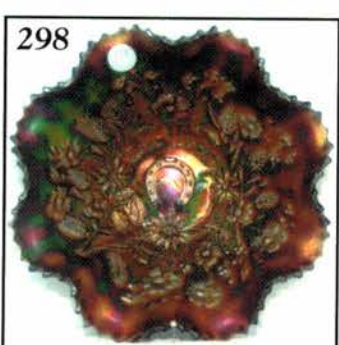
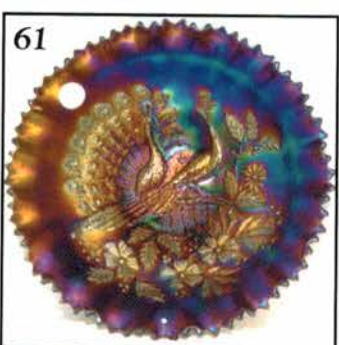
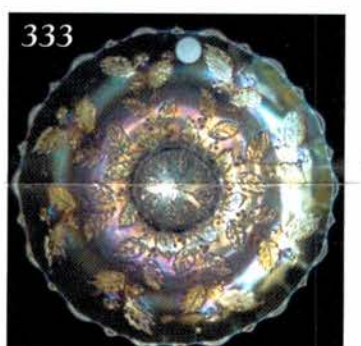
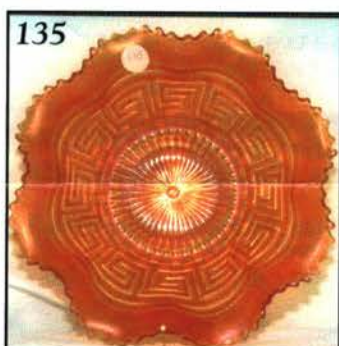
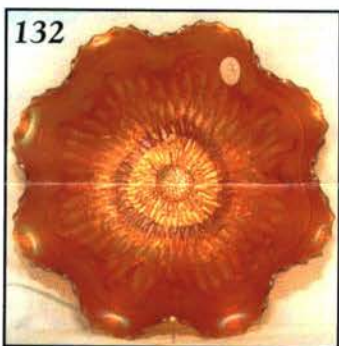
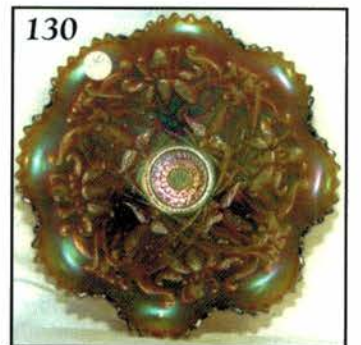
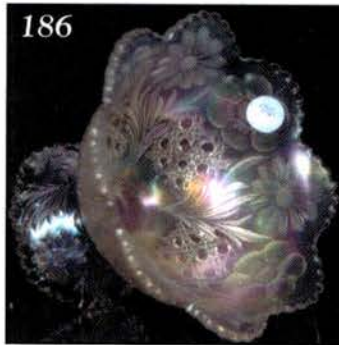
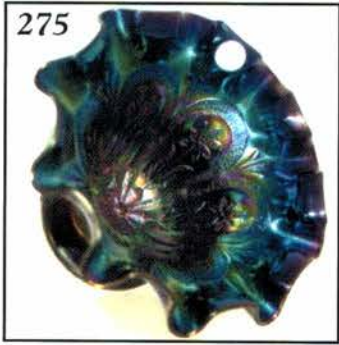
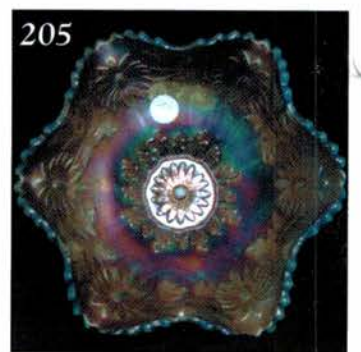
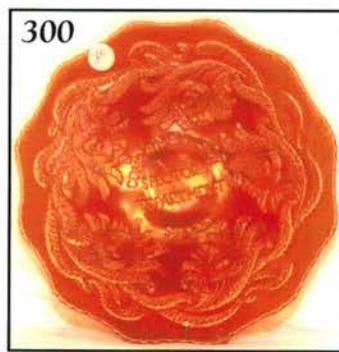
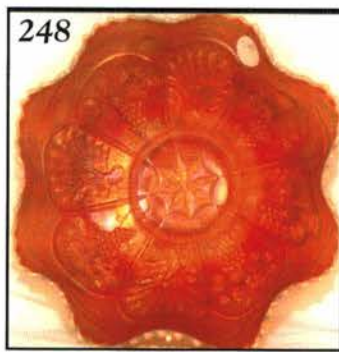
Days Inn: 660-882-8624 • Comfort Inn: 660-882-5317 • Super 8: 660-882-2900

Auction Consists of Rarity, Great Irid. and Variety

THANK YOU FOR ATTENDING TODAY

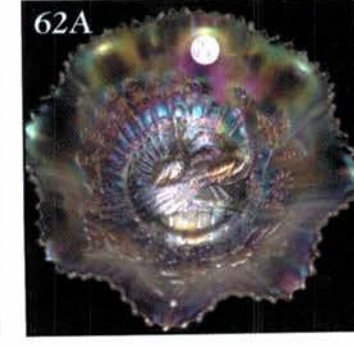
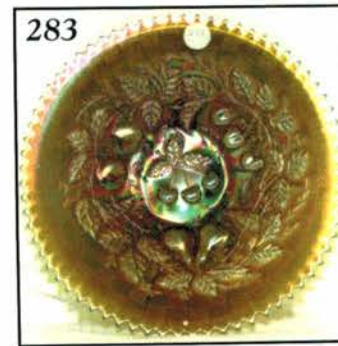
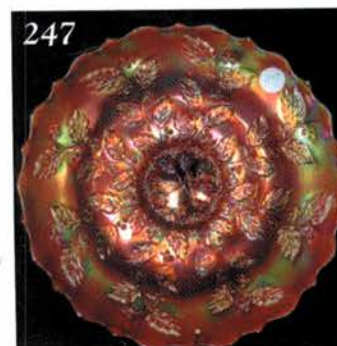
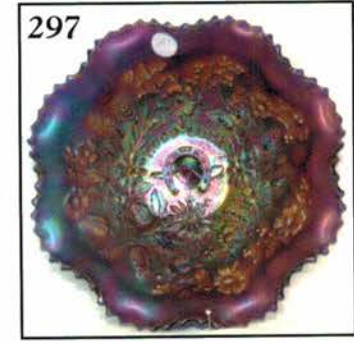
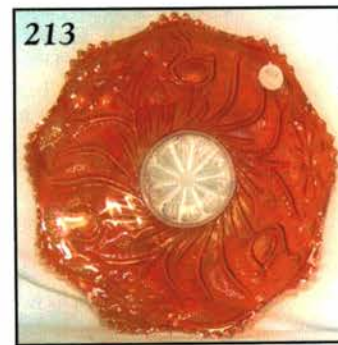
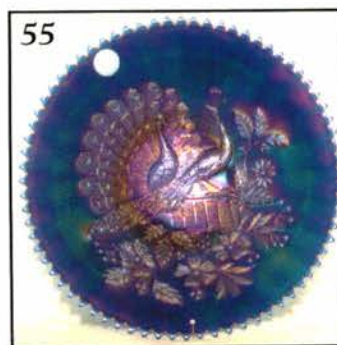
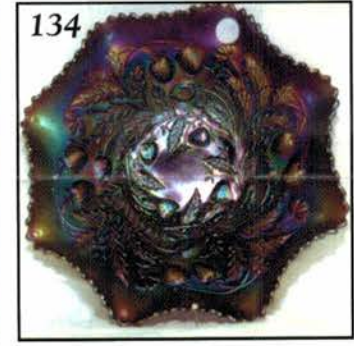
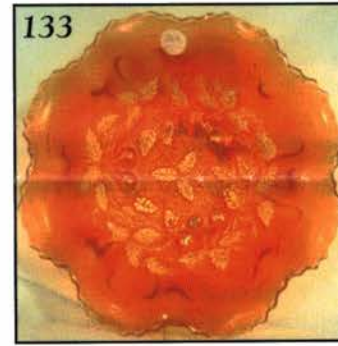
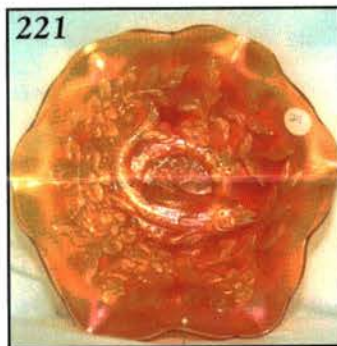
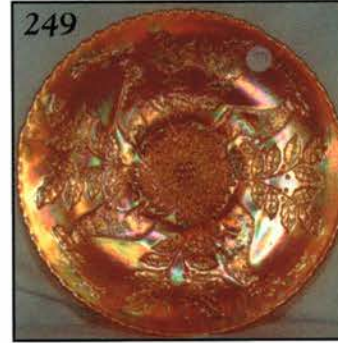
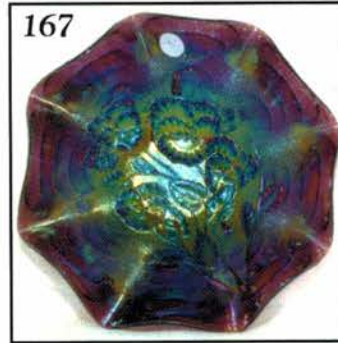
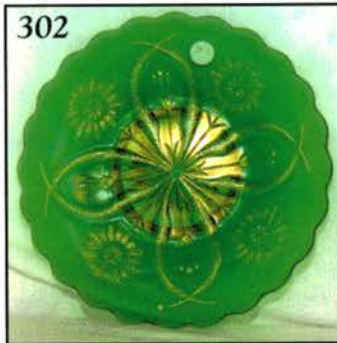
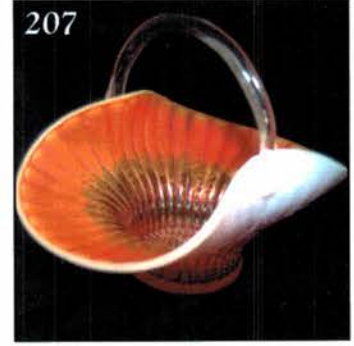
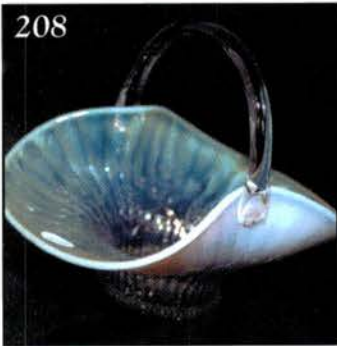
- | | |
|---|--|
| _____ 1. B - Blackberry Spray CRE 6-Ruffle Hat - Neat Shape | _____ 16. Rich M - 8 1/4" Rd. Fentonia Fruit Ftd. Master Bowl - Scarce Pattern |
| _____ 2. P - 6", 6-Ruffle Dugan Cherries Sm. Bowl | _____ 17. Beautiful W - 11 1/4" ICS Persian Garden Bowl |
| _____ 3. P - 5 1/4", 8-Ruffle Imp. Diamond Lace Little Bowl | _____ 18. A - Mlbg. Peacock Tail Vt. Ruffled Compote - Satiny |
| _____ 4. M - 4 1/2" Rd. Imp. Diamond Lace Little Bowl | _____ 19. G - Mlbg. 7 1/2", 3 in 1 Hanging Cherries Bowl - Satin Finish |
| _____ 5. M - N Singing Birds 4 1/4" Berry Bowl - Scarce | _____ 20. Lt. M - PCE N Good Luck Bowl - Chipped Tip |
| _____ 6. W - Dugan Dahlia 4 1/2" Berry Bowl - Gilded Feet | _____ 21. M - 7 1/4" Horse Medallion Plate - Pinks and Blues - Hot Pattern |
| _____ 7. M - Headdress 6", 12-Ruffle Compote - Curved Star Ext. | _____ 22. Lt. B - 8 1/4" Collar Base ICS Dragon and Lotus Bowl - Pink, Blue and Silver |
| _____ 8. G - Imp. Propeller Compote - Extra Nice Small Compote! | _____ 23. M - Orange Tree Loving Cup - NICE - Engraved L.H.M. |
| _____ 9. M - 6" Persian Medallion Plate - 4-Sides Up | _____ 24. Electric P - N Grape & Cable Hatpin Holder - Sm. Chip on One Foot |
| _____ 10. BA - Imp. Lustre Rose Ftd. Fernery Bowl - Rare Color | _____ 25. M - N Grape & Cable Hatpin Holder - Super Example - One Ft. Chip |
| _____ 11. B - Wine and Roses Wine Glass - Electric, Fantastic | _____ 26. G - 11" April Showers Vase - Peacock Tail Interior |
| _____ 12. M - Wine and Roses Wine Glass - Extra Nice | _____ 27. M - Interior Swirl 7 1/2" Tall Bulbous Pitcher |
| _____ 13. M - Lattice and Grape Tankard Pitcher - Great Example | _____ 28. M - N Interior Swirl Tumblers - Choice A or B |
| _____ 14. M - N Grape & Cable Tankard Water Pitcher - Cracked Around Base | _____ 29. W - N Peach Tumblers - Choice A or B |
| _____ 15. M - N Peacock at Fountain Butter Dish - Nice Match | |

30. G - N Tankard Grape & Cable Tumbler - Scarce Color and Size
31. W - Fenton Floral and Grape Tumbler - Nice Find!
32. P - Heavy Iris Tumbler - Super Electric
33. P - N Grape Arbor Tumbler w/Scarce Rib Interior
34. Outstanding M - Ten Mums Tumbler
35. B - Butterfly and Berry Tumbler - Great Example
36. Dark M - Crabclaw Tumbler
37. Smoke - Soda Gold Tumbler - Beautiful Blues and Pinks
38. M - Harvest Flower Tumbler - Scarce and Appealing
39. Aqua/Teal - Imp. Tiger Lily Tumbler - Glows!
40. Rich M - Vineyard Tumbler
41. Deep Celeste B - Concave Diamond Flared Top Tumbler
42. Radium M - Lattice Band Stork and Rushes Tumbler - Dark and Nice
43. M - Flashed Base - Enameled Swallow 5 1/2" Tall Tumbler - Rare
44. M - Inverted Coin Dot Tumbler
45. Outstanding B - Dugan Peacock at Fountain Tumblers - Electric - Choice A, B, C, D, E
46. G - N Acorn Burrs Tumbler
47. W - Gilded Dahlia Tumbler - Nice Blue Highlights
48. M - Dahlia Tumbler
49. P - Dahlia Tumbler
50. G - Mlbg. Feather and Heart Tumbler - 250
51. M - Mlbg. Feather and Heart Tumbler
52. G - Mlbg. Marilyn Tumbler - A Toughie! - 250
53. Marigold Over Milkglass - Apple Blossom and Shell Tumbler (I named it.)
54. M - Flashed - Five Fluted Vt. Tumbler - Unlisted - 55
55. Electric B - N Peacocks Plate - Rib Ext.
56. Ice G - N Peacocks Plate - Rib Ext.
57. Great A - N Peacocks Plate - Rib Ext.
58. M - 9" PCE N Peacocks Bowl - Rare BW Exterior
59. Clam - Pastel Green Irid. PCE N Peacocks Bowl - Rib Ext. - Minor Nicks
60. M - PCE N Peacocks Bowl - Rib Ext. - Pinks, Yellows Abound!
61. P - PCE N Peacocks Bowl - Rib Ext. - Electric Blues, Purples, Golds
62. Great G - N Ruffled Peacocks Bowl - Rib Ext.
- 62A. W - N Ruffled Peacocks Bowl - Rib Ext. - Blues, Yellow, Pinks
63. W - 9" Fanciful Plate - Multi Color Beauty
64. Awesome G - 9", Flat, Spat. Ftd. Fenton Grape & Cable Plate - Stretchy
65. A - 9" Spat. Ftd. Fenton Grape & Cable Plate - Purples, Golds, Blues
66. RED - 2-Row, JIP, O.E. Basket - Always In Demand
67. Faceted Carnival Glass Clip-On Earrings - Pr. - Nice
68. Fabulous 3-Strand 17" Faceted Carnival Glass Necklace - WOW!
69. Single Strand 20" Faceted Carnival Glass Necklace - Colorful
70. Dark M - 9 1/2", 3 in 1, Fenton Holly Bowl - Nice One
71. Lime G - 9", 8-Ruffle Fenton Holly Bowl
72. G - 9", 8-Ruffle Fenton Holly Bowl - Extra Pretty
73. Amber - 8 1/4" ICS Collar Base Dragon and Lotus Bowl - Scarce Shape and Color
74. Dark B - 8 1/4" ICS Collar Base Dragon and Lotus Bowl
75. Rich M - 9" Sq. 8-Ruffle Collar Base Dragon and Lotus Bowl
76. B - 9 1/4" Dragon and Lotus Plate - Seldom Offered
77. G - 8 1/2" Collar Base 3 in 1 Dragon and Lotus Bowl
78. G - 8 1/2", 3 in 1 Edge, Captive Rose Bowl - Nice and Pretty
79. A - 8 1/2", 3 in 1 Edge, Captive Rose Bowl - Scarce Color
80. Rich M - 9", 3 in 1 Collar Base Peacock and Grape Bowl
81. Dark B - 8", 8-Ruffle Spat. Ftd. Stag and Holly Bowl
82. Scarce G - 8" ICS Spat. Ftd. Stag and Holly Bowl
83. Scarce Powder B - 9", 3 in 1 Edge Ribbon Tie Bowl - Beautiful!
84. G - 8 1/2", 3 in 1 Ribbon Tie Bowl - Lots of Pinks
85. PO - Four Flowers 5 1/2" ICS Bowl - Dugan - Lots of Opal - Scarce Shape
86. Aqua Opal - N Drapery Rose Bowl
87. PO - 8 1/4" Dome Ftd. Handgrip Ski Star and Compass Bowl
88. Lav. - N Rd. Bushel Basket - Gold and Silver Irid.
89. P - N Rd. Bushel Basket - Gold and Silver Irid.
90. M. - N Rd. Bushel Basket
91. Clam - Field Flowers Imp. Water Pitcher - Load of Pinks & Blues
92. G - N Squatty 7 1/2" Feathers Vase - 3 3/4" Base, 5 1/2" Top - Alaskan Irid.
93. G - N 10 1/4" Feathers Vase - 3 3/4" Base, 4 3/4" Top - Alaskan Effect
94. G - N Squatty 7 1/4" Tree Trunk Vase - 3 3/4" Starred Base, 4 3/4" Top - Alaskan Effect
95. M - 5" Miniature Morning Glory Vase - Little Cutie!
96. Limeish G - 12" Imp. Beaded Bulls Eye Vase
97. P - 9 1/4" Electric Ripple Vase - Engraved 1915 - Super!
98. Scarce Smoke - 12 1/8" Imp. Ripple Vase
99. P - N 11" Diamond Point Vase - Electric Golds and Purples
100. Red Amberina - 10" Fenton Fine Rib Vase
101. PO - 11 1/4" Dugan Pulled Loop Vase
102. M - 11 1/4" Radium Pulled Loop Vase
103. W - 11" Frosty Dugan Target Vase - Abundant Blues and Pinks
104. M - 10 1/4" CRE Rustic Vase - 4 3/4" Top
105. BA - Dugan Maple Leaf Ped. Ftd. 7 pc. Berry Set - Peacock Tail Int.
106. G - N Fern Compote - Daisy and Plume Ext. - Radium Finish
107. M - Mlbg. Holly Whirl Card Tray Shape Bon Bon - Satin
108. B - Fenton Vintage Fernery Bowl - Electric Highlights
109. B - 5 1/4", 6-Ruffle, 2-Row O.E. Basket
110. Vas. - 5 3/4", 2-Row O.E. Basket - 2-Sides Up - M. Overlay
111. Sapphire Base - 6 1/4", 2-Row O.E. Blackberry Basket - Nice Item
112. B - 6 1/2", 2-Row O.E. Blackberry Basket - 2-Sides Up
113. Scarce A - 6", 6-Ruffle, 2-Row O.E. Blackberry Basket - A Beauty!
114. B - Persian Medallion Rose Bowl - Multi Elec. - Ribbed Int.
115. Pumpkin M - Persian Medallion Rose Bowl - Ribbed Int. - Sweet!
116. G - 7 1/2" Vintage Plate by Fenton - Extra Nice
117. B - 9 1/2" Fenton Peacock at Urn Plate
118. W - Dome Base, 9 1/2" Dugan Double Stem Rose Plate - Lots of Green
119. P - N Grape & Cable Butter Dish w/Lid - Interior Wear
120. A - 6 1/4" N Grape & Cable 2-Sides Up Card Tray Plate
121. G - N Wild Rose 8 1/4" Ftd. Plate - 2" Off Table
122. G - 7" ICS Fenton Acorn Bowl - Near Emerald
123. M - Fenton Ftd. Persian Medallion 7 pc. Berry Set / G & C Ext. - Rare
124. M - 9 1/4" N Fruits and Flowers Master Berry Bowl
125. M - Spat. Ftd. N 8-Ruffle Sunflower Bowl - Super Blues and Pinks
126. A - N PCE Strawberry Bowl - Plain Ext.
127. G - N Fruits and Flowers Stemmed Bon-Bon - BW Ext.
128. P - 8 3/4" N Ftd. Wishbone Bowl - Multi Electric
129. Super Satin M - 8 1/2" N Ftd. Wishbone Bowl - Great Pinks
130. G - N Ftd. Wishbone Bowl - Lots of Blues and Pinks
131. Clam - N Spat Ftd. 8-Ruffle, 8 1/4" Sunflower Bowl
132. Gorgeous M - N Spat. Ftd. 8-Ruffle, 8 1/4" Sunflower Bowl
133. M - 9", 8-Ruffle Spat. Ftd. Stippled Three-Fruits Medallion Bowl - Super Pastel Irid.
134. P - 10", 8-Ruffle N Wild Strawberry Bowl - Rarer w/Plain Ext. - Multi-Elec.



135. M - N 8³/₄", 8-Ruffle Greek Key Bowl - BW Ext. - Superb Pinks
136. Pastel M - 9" N Three-Fruits Plate - BW Ext. - Greens, Yellows, Pinks
137. RARE - N B Stippled Grape and Cable Bon-Bon
138. B - N 9" Stippled Grape and Cable Vt. Plate - Rib Ext.
139. M - Flashed - Gaelic Spooner - Rare Find
140. P - N Stippled Dandelion Mug - 3¹/₄" Top
141. P - N Stippled Dandelion Mug - 3¹/₂" Flared Top - Multi Electric
142. M - N Stippled Singing Birds Mug - Extra Nice Color and Scarce!
143. Sapphire Base - Orange Tree Mug - 2¹/₂" Base, 3³/₈" Top - Scarce
144. B - Orange Tree Mug - 3¹/₂" Top - 3" Base
145. Scarce BA Heron Mug - Multi Color - Dandy
146. Rich M - Fisherman's Mug - Great Detail
147. P - N Grape & Cable Cracker Jar w/Lid - Very Pretty
148. B - Covered Hen Sowerby - Exceptional Color
149. Red - Persian Medallion Bon-Bon - Minor Mold Roughness
150. P - N Ivy Town Pump - A Must For Any Collector
151. P - Pansy Sugar Bowl - Gorgeous Electric
152. Amber - Imp. Pansy Creamer
153. M - Imp. Pansy Creamer and Sugar - Nice Set
154. P - Dugan Wreathed Cherry, 7 pc. Oval Berry Set - Complete
155. M - Rd. 7" Imp. Windmill Bowl - Pretty
156. P - 8¹/₂" Rd. 16-Scallop Ftd. Hattie Bowl - Scarce Color
157. Super Smoke - 9" Rd. Ftd. Hattie Bowl - Blues, Pinks and Yellows
158. M - 8" Deep Rd. Hattie Bowl
159. M - 9", 8-Ruffle Hattie Bowl - Beautiful
160. M - 10" Imp. Lustre Rose Footed Bowl - Round and Deep
161. M - Poinsettia Milk Pitcher - Pinks and Blues
162. M - Crackle Car Vase with Metal Holder
163. M - Imp. 474 Tumbler - Nice Example
164. Scarce G - Imp. Flute Toothpick Holder
165. P - Imp. Flute Toothpick Holder - Mold Roughness
166. M - Flute Toothpick Holder - Minor Mold Imperfections
167. P - 9", 8-Ruffle Imp. Pansy Bowl - Super Elec. Blues & Purples
168. P - 9", 8-Ruffle Imp. Pansy Bowl - Elec. Yellows and Pinks
169. M - 9", 8-Ruffle Imp. Pansy Bowl - Hot Pinks and Yellows
170. Custard Nutmeg - N Poppy Pickle Dish - Non-Iridized
171. Aqua/Teal - Imp. Tiger Lily Water Pitcher - Beautiful Radium Irid.
172. Helios G - Tiger Lily Tumblers - One Good, One Chipped - Sold as One
173. Great Little B - 6¹/₄" Persian Medallion Plate - Smooth Ext.
174. A - 5" Rd. Persian Medallion Berry Bowl
175. M - Dugan 8³/₄", 10-Ruffle Apple Blossom Twigs Low Bowl - Radium
176. W - 8³/₄", 10-Ruffle Apple Blossom Twigs Low Bowl - Gold Satin
177. PO - Dugan 9¹/₄" Rd Wishbone and Spades Bowl - Unusual Shape
178. P - Dugan 6¹/₂", 8-Ruffle Cherries Low Plate - Jewelled Heart Ext.
179. B - 10¹/₄", 3 in 1 Edge Cherry Chain Bowl - Orange Tree Ext.
180. Rich M - 10¹/₄", 6-Ruffle Cherry Chain Bowl - Orange Tree Ext.
181. M - 10¹/₄", 8-Ruffle Square Cherry Chain Bowl - Orange Tree Ext.
182. G - Flat 9" Spat. Ftd. Fenton Grape & Cable Plate - Exceptional Irid.
183. A - 9" N Grape & Cable Plate - BW Ext. - Stretchy
184. P - 7¹/₂", 6-Ruffle Grape and Cable Bowl - Single Poppy In Marie Exterior
185. G - N 7³/₄", 6-Ruffle Smooth Rays Bowl - Exterior Poppy In Marie
186. W - Cosmos and Cane Dome Ftd., 8-Scallops, Flared Top Compote - A Winner!
187. Rich M - N 9" Grape and Cable Ruffled Bowl - BW Ext. - Top of the Line
188. Pastel M - N 8³/₄" PCE Strawberry Bowl - Smooth Ext. - Blues & Yellows
189. Lt. M - N 9" Grape & Cable Plate - Yellow Stretch Irid w/Pinks and Blues
190. M - Mlbg. 6-Ruffle 10" Whirling Leaves Bowl - Satin Finish
191. M - Mlbg. 6-Ruffle 10" Whirling Leaves Bowl - Radium Dandy
192. G - Mlbg. 10", 6-Ruffle Holly Whirl Bowl - Super Radium
193. Lime G Base - Plain Jane Ruffled Compote - M. Overlay
194. M - Mlbg. Rays and Ribbons, 3 in 1 Bowl - Colorful Satin Finish
195. A - Mlbg. 6-Ruffle Holly Whirl Bowl - Outstanding Radium
196. M - Fishscale and Ribs Sherbets - 2 x \$
197. P - Imp. Shell and Sand 7¹/₂", 8-Ruffle Bowl - Smooth Ext. - Multi Elec.
198. M - N 10", 8-Ruffle Wild Strawberry Bowl - Smooth Ext.
199. M - N 6", 6-Ruffle Wild Strawberry Bowl - BW Ext.
200. G - 8¹/₂", 6-Ruffle Fenton Concord Bowl - Pretty Piece
201. Clam - 9¹/₄" Leaf Chain Plate - Gorgeous Example
202. B - Fenton 16¹/₂" Fine Rib Mid-Size Vase
203. M - Fenton 15¹/₂" Fine Rib Mid-Size Vase
204. Moonstone - 8¹/₄" Rd. Scales Bowl - Super Example
205. Blue Opal - Westmoreland 8¹/₂" , 6-Ruffle Daisy Wreath Bowl - WOW!
206. Blue Opal - Westmoreland 8¹/₂" , 6-Ruffle Dogwood Bowl - Excellent
207. PO Dugan Caroline Lg. Handed Basket - Super and Scarce
208. Lav. Opal - Caroline Lg. Handed Basket - Gold & Silver Satins
209. Super Persian Blue Opal - Westmoreland 8¹/₂" , 6-Ruffle Smooth Rays Bowl
210. Blue Opal - Westmoreland 8¹/₂" , 6-Ruffle Scales Bowl - Awesome
211. Moonstone - 8¹/₂" , 6-Ruffle Dogwood Bowl
212. Amber - Imp. 8¹/₄" , 8-Ruffle Open Rose Bowl - Great Pinks and Purples
213. M - 9¹/₂" Radium Field Thistle Plate - Great Find!
214. M - Radium Field Thistle Spooner
215. M - Radium Field Thistle Creamer
216. M - Radium Field Thistle Tumbler
217. M - 8¹/₄" Tall Rising Sun Juice Pitcher - Extra Nice
218. M - Rising Sun Juice Glass
219. PO - Dugan Holly and Berry Tri-Corner Nappy - Lots of Opal
220. M - Mlbg. Hobstar and Feather Punch Cup
221. M - Mlbg. 6-Ruffle Trout and Fly Bowl - Satin Pinks
222. Pumpkin M - 7³/₈" Leaf Chain Plate - A Beautiful Item
223. M - Nude Deco English Hob and Button Large Compote - Neat Item
224. M - Dugan Five Hearts Rose Bowl - One of Two Known!
225. Honey Amber - Cosmos and Cane Butter Dish with Lid
226. Honey Amber - Cosmos and Cane Sugar Bowl with Lid
227. Honey Amber - Cosmos and Cane Creamer
- 228A. P - Grape & Cable Cologne Bottle w/Stopper
228. Custard - 8" Nutmeg Grape & Cable Plate - No Irid.
229. Custard - 10" ICS Nutmeg N Peacock at Urn Bowl - No Irid.
230. Custard - 5¹/₂" ICS Nutmeg N Peacock at Urn Bowl - No Irid.
231. Gorgeous Electric B - N 10" Peacock at the Urn Bowl
232. Electric B - 5¹/₂" ICS N Peacock at Urn Bowls - Choice: A, B, C, D, E, F
233. P - 5¹/₂" ICS N Peacock at Urn Bowl - Choice: A, B, C


234. W - 5½" ICS N Peacock at Urn Bowl - Choice: A, B, C
235. Ice Blue - 5½" ICS N Peacock at Urn Bowl - Choice: A or B
236. Ice G - 5½" ICS N Peacock at Urn Bowl - Choice: A or B
237. M - 5½" Australian 12-Ruffle Shrike Sauce Bowl
238. M - 5½" Australian 12-Ruffle Swan Sauce Bowl - Super
239. BA - 5½" Australian 12-Ruffle Swan Sauce Bowl
240. Pink - Australian 5½", 8-Ruffle Magpie Bowl - NO IRID
241. Pink - Australian 6½", 8-Ruffle, Dome Base Butterfly Bush Bowl - NO IRID
242. M - 9½" Australian 16-Ruffle Lg. Kangaroo Bowl
243. M - 8½" Australian Gum Tips Vase - Polished/Ground Base
244. Clear 5" Rd. Australian Berry Bowl - Marigold Marie
245. Clear 5" Rd. Australian Berry Bowl - Marigold Marie - Choice: A or B
246. Crystal and Frosted Cupid - 4½" Rd. Berry Bowl - NO IRID
247. Gorgeous M - 9½" Fenton Holly Plate - Wondrous!
248. Pumpkin M - Collar Base 9", 8-Ruffle Peacock and Grape Bowl - Opal Tips!
249. M - 9¼" ELAT Spat. Ftd. Stag and Holly Plate - One of the Best
250. B - Fenton Milady, 7 pc. Tankard Water Set - Extra Nice Set
251. M - Fenton Milady, 7 pc Tankard Water Set - Seldom Seen or Offered as a Set
252. P - N Singing Birds Mug
253. M - N Singing Birds Mug - Rich and Dark
254. M - Fisherman's Mug - Scarce Color
255. A - Fisherman's Mug - Nice One!
256. M - Orange Tree Mugs - 2½" Base, 3¼" Top - Choice A or B
257. B - Tumbler Plain w/Enameled - "Souvenir Of . . . 1926"
258. B - Ftd. Orange Tree Tumblers - Choice: A or B
259. M - Lattice and Daisy Tumblers - 6 x \$
260. Deep B - 6½" Rd. Flared Lions Bowl - Great Strike
261. B - 7", 6-Ruffle Collar Base Horse Medallion Bowl - Radium Silver
262. W - 6", 6-Ruffle Garden Path Vt. Bowl - Soda Gold Ext.
263. P - Dugan Amaryllis Tri-Corner Compote
264. B - N 5¼" ICS Peacock at Urn Bowls - Choice: A, B or C
265. G - N Fruits and Flowers Stemmed Bon-Bon - Hot Pinks & Greens
266. B - N Poppy Pickle Dish - Superb Electric Highlights
267. M - Lg. 6-Ruffle CRE Persian Medallion Compote - Nice Example
268. Vas. - Persian Medallion Bon-Bon - Outstanding
269. B - Fenton Ruffled Peacock at Urn Compote - Very Pretty
270. M - Australian 12-Ruffle, 5½" Shrike Bowl - Radium Pinks & Blues
271. RARE AQUA OPAL - Fenton 9", 6-Ruffle Vintage Grape Bowl
272. M - Golden Harvest 7 pc. Decanter Set - Tough To Find Complete!
273. G - 10", 3 in 1, Star Base Fenton Peacock Tail Bowl - Possibly 1 of 3
274. Electric B - 9" N Stippled Three-Fruits Plate - Close to Renniger
275. Electric Deep P - 8", 10-Ruffle Deep Dugan Flowers and Frames Bowl - RARE Shape and Size!
276. Contemporary - Tiara Exclusives - Lime G Irid, Flowered Medallion Pitcher
277. M - N Singing Birds Butter Dish Lid - Interior Bruise
278. PO - 5½", 8-Ruffle Dugan Petal and Fan Berry Bowl
279. RADIUM ELECTRIC P - Imperial 6", 8-Ruffle Scroll Embossed Bowl - File Ext.
280. Near Emerald G - 9", 8-Ruffle N Grape Leaves Bowl - Super!
281. Smoke 8¼" Rd. Flared Beautiful Imp. Hattie Bowl
282. Ice B - N PCE Nippon Bowl - Rib Ext. - Stunning Pastel Irid.
283. G - 9" N Three-Fruits Plate - BW Ext. - Way Above Average
284. M - N 9" Ruffled Stippled Three-Fruits Bowls - Pinks and Golds
285. A - N Grape & Cable Whimsey Compote from Sweetmeat - Extra Nice
286. A - 8-Ruffle N Good Luck Bowl - Plain Ext.
287. Horehound - N 9½" Good Luck Plate - BW Ext. - OUTSTANDING EXAMPLE!
288. M - 9" Good Luck Plate - BW Ext.
289. P - 9" Good Luck Plate - BW Ext.
290. B - N PCE Good Luck Bowl - Rib Ext. - Multi Elec.
291. M - N PCE Good Luck Bowl - Rib Ext. - Hot Pinks and Blues
292. A - N 8-Ruffle Good Luck Bowl - Scarce BW Ext.
293. Pastel M - Stippled N PCE Good Luck Bowl - Rib Ext. - Soft Pinks & Golds
294. A - N PCE Good Luck Bowl - Rib Ext. Radium Gold and Copper - Great Look
295. P - N PCE Good Luck Bowl - Rib Ext. - Screaming Blues, Purples & Golds
296. M - N 8-Ruffle Good Luck Bowl - BW Ext. - Yellow & Green Irid.
297. Deep B - N 8-Ruffle, Stippled Good Luck Bowl - Rib Ext. - Electric Blues & Pinks
298. B - N 8-Ruffle Good Luck Bowl - Rib Ext - Rainbow Electric
299. A - Mlbg. 6½" ICS Radium Courthouse Bowl - Scarce Shape
300. M - 9¼" Spector's Department Store Advertising Plate - IT'S A 10+!
301. M - 7¼" Flat "Illinois Soldiers' and Sailors Home" Plate - Stunning!
302. Em. Green - 9½" Four Flowers Vt. Plate - Loaded with Blues
303. M - 9½" Rd. Mikado Lg. Compote - Color Top to Bottom
304. M - Lg. Ftd. Orange Tree Fruit Bowl
305. M - 9¼", 8-Ruffle N Grape & Cable Bowl - BW Ext.
306. Super M - 11" Sq. Ruffled Ball Ftd. Two Flowers Bowl - Fine One Better
307. M - 6", 6-Ruffle Ball Ftd. Two Flowers Berry Bowl
308. M - 11" Sq. 8-Ruffle Ball Ftd. Stag and Holly Bowl - Top of the Line
309. Pumpkin M - 9" Ball Ftd. ICS Lotus and Poinsettia/Water Lily Bowl
310. G - Cambridge Inverted Feather Cracker Jar - Roughness on Lid, but a Nice Example
311. G - N 9¼", 8-Ruffle Wild Strawberry Bowl - BW Ext.
312. P - 9", 8-Ruffle N Strawberry Bowl - BW Ext. - Great Color
313. B - N Round Bushel Basket
314. M - Imp. Grape Punch Bowl - 12" Round - No Base
315. P - N Memphis Fruit Bowl, Base, Five Cups - Pretty Pattern
316. PO - 9" Dome Ftd. CRE Dugan Soutache Plate
317. M - Imp. Rd. 2-Handled Star and File Bowl
318. A - 6", 6-Ruffle N Wild Strawberry Bowl
319. W - Dugan Grapevine Lattice 6¼" Low Ruffle Plate
320. M - 6½" Imp. Grape Plate - Little Beauty
321. M - 7" Imp. Stippled Rays/Scale Band Plate - Choice: A or B
322. P - N 8½", 8-Ruffle Greek Key Bowl - Scarce BW Ext.
323. A - 9" N Grape & Cable Plate/BW Ext. - Mkd "Albany, N.Y."
324. G - 9" N Grape & Cable Plate/BW Ext. - Stretchy Irid.
325. G - 9" N Strawberry Plate/BW Ext. - Multi-Color Dandy
326. G - 9" N Strawberry Plate/Smooth Back - Pinks, Coppers and Greens
327. P - 8½", 8-Ruffle N Ftd. Wishbone Bowl - Blue, Gold, Purple Mix
328. A - 8½", 8-Ruffle, Dome Base N Star of David and Bows Bowl
329. M - 9¼", 3 in 1 Collar Base Dragon and Lotus Bowl
330. B - 8¼" ICS Leaf Chain Bowl - Multi Electric Beauty



- _____ 331. Clambroth at its Best! - 9", 8-Ruffle Leaf Chain Bowl
- _____ 332. B - 9/4" Captive Rose Plate
- _____ 333. **W - 9 1/2" Flat Fenton Holly Plate - Man Does It Have Color!**
- _____ 334. M - 5" Rd. Ftd. Panther Bowls - Choice: A or B
- _____ 335. **Red - 7", 6-Ruffle Leaf Chain Bowl**
- _____ 336. **Red Rev. Amberina - 6" JIP 2-Row O.E. Basket**
- _____ 337. **Red - 6 1/4", 2-Row O.E. Basket - 2-Sides Up - Multi Elec.**
- _____ 338. **Red Amberina - 5 1/2", 6-Ruffle 2-Row O.E. Basket**
- _____ 339. **Red Amberina - 7 1/2" Blackberry 2-Row O.E. Basket - 2-Sides Up**
- _____ 340. **Red - 10 3/4" Fenton Fine Rib Vase - Two Heat Separations**
- _____ 341. **Radium A - Mlbg. 11 1/4" Bulls Eye and Loop Vase - High Voltage!**
- _____ 342. **W - 10 3/4" N Diamond Points Vase - Wonderful Color!**
- _____ 343. P - 9" N Diamond Points Vase - 3 1/2" Base - 5" Top
- _____ 344. P - 10 1/4" N Diamond Points Vase - 3 3/4" Base - 4 1/4" Top
- _____ 345. M - N 10" Fine Ribs Vase - Starred Base
- _____ 346. G - N Squatty 7 3/4" Fine Rib Vase - 3 1/2" Base - 5 1/2" Top
- _____ 347. P - N Squatty 7" Fine Rib Vase - 3 1/2" Base - 5" Top
- _____ 348. A - 9 1/4" Four Pillars Vase
- _____ 349. **Ice G - N Corn Vase - Floral Base**
- _____ 350. G - 11 1/2" Imp. Ripple Vase - 3 1/2" Base - 4 1/4" Top - Base Glows
- _____ 351. **P - 7 1/4" Squatty Imp. Beaded Bulls Eye Vase - 3 1/2" Base - 5 1/2" Top - Super Electric!!**
- _____ 352. **M - 9" Imp. Beaded Bulls Eye Vase - 3 1/2" Base - 5" Top - Radium Electric**
- _____ 353. Teal - 8" Corinth Vase
- _____ 354. A - 11" Rustic Swung Vase
- _____ 355. M - 9 1/2" CRE Rustic Vase
- _____ 356. **A - 10 1/4" Fenton Long Thumbprint Hobnail Vase - Seldom Offered**
- _____ 357. Clear Base - 11 1/2" Diamond Point Columns Vase w/Marigold Tulip Type Top
- _____ 358. Clear Base - 7" Candlesticks w/Marigold Top - Six Sided Pr.
- _____ 359. M - Twins Fruit Bowl Base
- _____ 360. M - Fashion Punch Bowl Base
- _____ 361. M - 474 Punch Bowl Base
- _____ 362. **A - N Peacock at Fountain Punch Bowl Base**
- _____ 363. **P - N Punch Bowl or Fruit Base - Memphis Pattern**
- _____ 364. M - N Memphis Punch or Fruit Bowl Base
- _____ 365. **G - Wreath of Roses Punch Bowl Base - Super Stretchy Irid.**
- _____ 366. Moonstone - Leaf Tiers Lamp Shades - 3 x \$
- _____ 367. B - Western Thistle Tumbler
- _____ 368. **M - Star and Fan Cordial Bottle w/Stopper**
- _____ 369. M - Star and Fan Undertray - Radium Beauty
- _____ 370. M - Zipper Stitch Undertray
- _____ 371. **Contemporary - Red -Robert Hansen Moon & Star Goblet**
- _____ 372. **Contemporary - Cobalt B - Robert Hansen 49er Tumbler**
- _____ 373. Contemporary - Red - Robert Hansen Paneled Bulls Eye Tumbler
- _____ 374. Contemporary - Cobalt B - Robert Hansen Maple Leaf Tumbler
- _____ 375. Contemporary - Aqua/Teal - Ron Hansen Fleur De Lis Tumbler - M Overlay
- _____ 376. Contemporary - Red Amberina - Ron Hansen Hobstar and Fine Cut Tumbler
- _____ 377. Contemporary - A - Ron Hansen Rabbit with Basket Toothpick
- _____ 378. Contemporary - Red - Turkey Toothpick Holder - ?Hansen?
- _____ 379. Contemporary - Red - Ron Hansen Gypsy Kettle Toothpick
- _____ 380. Contemporary - A - Ron Hansen Paneled Toothpick Holder
- _____ 381. Contemporary - Yellow Amber - Ron Hansen Paneled Toothpick
- _____ 382. Contemporary - BA - Indian Toothpick Holder - SCGC - 1964
- _____ 383. Contemporary - M - Indian Toothpick Holder - SCGC - 1964
- _____ 384. Contemporary - M - St. Clair B.P.O.E. Plate - Ltd. Edition - #114 M.I.B.
- _____ 385. Contemporary - M - Beaded Diamond Tumbler - 3 1/2" Tall - 2 1/2" Dia.
- _____ 386. Contemporary - Red - Degenhart Museum Toothpick - NO IRID.
- _____ 387. Contemporary - Red - Degenhart Museum Toothpick - Iridized
- _____ 388. Contemporary - Pink - Degenhart Museum Toothpick - Iridized
- _____ 389. Contemporary - Smoke - IG Octagon Toothpick Holder
- _____ 390. Contemporary - M - IG Octagon Toothpick Holder
- _____ 391. Contemporary - B - St. Clair Kingfisher Toothpick Holder
- _____ 392. Contemporary - A - Fenton Wild Strawberry Toothpick
- _____ 393. Contemporary - Amber - Fan and Feather Ftd. Toothpick
- _____ 394. Contemporary - Sapphire - 1989 HOACGA Bell
- _____ 395. Contemporary - M over Custard - 1983 HOACGA Good Luck Loving Cup
- _____ 396. Contemporary - B - 4 1/2" Dia. Thomas Jefferson Paperweight
- _____ 397. Contemporary - M - IG 8", 3 in 1 Open Rose Ftd. Bowl
- _____ 398. Contemporary - G - IG Pansy Nappy
- _____ 399. Contemporary - Smoke - IG Grape Milk Pitcher
- _____ 400. Contemporary - M - IG 1966 Mayflower Water Pitcher
- _____ 401. Contemporary - Amber - IG Imp. Grape Water Pitcher
- _____ 402. Contemporary - Red - Octagon Vt. Heirloom Series Water Pitcher
- _____ 403. Contemporary - P - Westmoreland Ball and Swirl, 7 pc, Water Set
- _____ 404. Contemporary - P - Cherry and Cable, 7 pc., Water Set - Gorgeous
- _____ 405. Contemporary - P - Lg. Wright, 7 pc., God and Home Water Set
- _____ 406. Contemporary - Amber - IG Third Day of Christmas Plate
- _____ 407. Contemporary - Lime G - IG Fifth Day of Christmas Plate
- _____ 408. Contemporary - Ice B - Holly Band Cylindrical Mug
- _____ 409. M - Bambi Powder Dish with Powder Box Insert - Mint
- _____ 410. **M - 8" ICS Collar Base Dragon and Lotus Bowl - Extra Nice**
- _____ 411. Lime G - 9", 3 in 1, Smooth Ray Bowl - M Overlay - Base Glows
- _____ 412. **G - Fenton 10" Sq. Ruffled Smooth Rays Whimsey Bowl**
- _____ 413. Great M - 7", 8-Ruffle Fishscale and Beads Plate
- _____ 414. Clear - 8" Frosted Block Square Bowl - Sgnd. Made In USA
- _____ 415. A - N Lustre Flute Whimsey Vase From Tumbler
- _____ 416. P - Imp. Flute Toothpick Holder - Minor Roughness
- _____ 417. M - 7", 8-Ruffle Apple Blossom Bowl
- _____ 418. M - Banded Grape Mug
- _____ 419. Lime G - Smooth Rib Interior Whimsey Goblet - M Overlay
- _____ 420. M - 2 1/2" Dia. Flower Frog
- _____ 421. M - 6", 6-Ruffle Sailboats Bowl - Choice: A or B
- _____ 422. P - N Plain Interior Ruffled Compote - Daisy and Plume Ext.
- _____ 423. A - 6-Ruffle Blackberry Bramble Compote
- _____ 424. A - Stippled Rays Ruffled Compote
- _____ 425. M - Dugan Coin Spot Ruffled Compote
- _____ 426. M - Question Mark Compote
- _____ 427. A - 6-Ruffle Fenton Iris Compote
- _____ 428. G - 6-Ruffle Fenton Iris Compote
- _____ 429. M - 6-Ruffle Fenton Iris Compote
- _____ 430. M - Fenton Iris Goblet
- _____ 431. G - Fenton Iris Goblet
- _____ 432. G - N Daisy and Plume Compote - Plain Int. - Super!
- _____ 433. M - Fenton 4" Rd. Deep Miniature Blackberry Compote
- _____ 434. Lime G - M Overlay Smooth Rays Ruffled Compote
- _____ 435. M - Coin Spot Ruffled Compote
- _____ 436. M - Question Mark Compote
- _____ 437. M - Fenton Holly Goblet - Shaped Mini Compote
- _____ 438. B - Fenton Holly Goblet - Shaped Mini Compote
- _____ 439. B - Ruffled Fenton Holly Mini Compote

440. B - Miniature Blackberry Compote
 441. Light PO - 6 1/2", 8-Ruffle Petal and Fan Low Bowl - Lots of Opal
 442. W - 6", 8-Ruffle Garden Path Bowl
 443. B - 5" Deep, Round, Fenton Peacock Tail Bowl - Scarce Color
 444. B - 5 1/2" Rd. Fenton Little Flowers Bowl
 445. B - 5 1/4" Rd. Persian Medallion Bowls - 4 x \$
 446. G - 5 1/4" Rd. Persian Medallion Bowl
 447. Powder B - 5 1/4" Rd. Persian Medallion Bowl
 448. M - N 6", 6-Ruffle Fruits and Flowers Bowls - 3 x \$
 449. M - 5 1/2", 6-Ruffle Ftd. Panther Bowls - 3 x \$
 450. M - N Grape and Cable Butter Dish Lid Only - Beautiful
 451. M - Stippled Robin Mug (Old)
 452. Lime G - 9", 3 in 1, Fenton Smooth Rays Bowl - Silver Irid.
 453. Teal - Westmoreland Lg. Ftd. Shell Dish
 454. G - N Lustre Flute Creamer
 455. 3 Carnival Hatpins in a Bag
 456. Scarce A - Milady Tumbler - Gold and Silver Satin ⁸⁵
 457. Rich M - FieldFlower Tumbler
 458. M - Apple Tree Tumbler - Great Color
 459. Extra Nice M - Lattice and Daisy Tumbler
 460. M - Imp. Grape Tumbler - Radium Beauty
 461. M - Fenton Waterlily and Cattail Tumbler
 462. M - Lattice Band Stork and Rushes Tumbler - Radium
 462. M - Hobstar Band Tumbler - Radium
 464. M - Rambler Rose Tumblers - 4 x \$
 465. P - N Raspberry Tumbler - Multi Electric
 466. M - Lattice and Grape Tumblers - Nice! - 7 x \$
 467. P - Grape & Cable N Tumblers - 2 x \$
 468. B - Stork and Rushes Tumbler - Electric
 469. G - 6 1/4" Squatty N Tree Trunk Vt. Vase - Star Base
 470. M - 10 1/2" N Tree Trunk Vase - Plain Base
 471. G - 11 1/2" April Showers Vase - Peacock Tail Int.
 472. Russet - 11" N Thin Rib Vase
 473. Russet - 10 1/4" N Thin Rib Vase
 474. M - Big Basketweave Squatty Vase or Fruit Base
 475. M - Pr. Premium Candlesticks
 476. M - Pr. Candlesticks - Crackle Pattern
 477. M - Canada Dry Pop Bottle
 478. M - Imp. Poinsettia Milk Pitcher
 479. M - Enameled Castle Lamp Shade
 480. M - Primrose Lamp Shade - Top Chipped
 481. M - Interior Rib Lamp Shade
 482. M - Imp. 3 1/2" Tall Crackle Candlesticks - Pr.
 483. M - Persian Medallion Bon-Bon
 484. M - 5 1/2" Ball Ftd. Ruffled Water Lily Bowl
 485. M - 6-Ruffle Flowering Dill Hat
 486. M - 5 1/4", 6-Ruffle N Fruits and Flowers Bowl
 487. A - Stork and Rushes Punch Cup - Extra Nice
 488. M - Moonprint Stemmed Creamer
 489. M - Split Diamond Small Creamer
 490. M - Quartered Block European Creamer
 491. Dark Green - Stippled Rays Fenton Ftd. Creamer
 492. M - Dugan Long Thumbprint Breakfast Creamer
 493. M - 8 1/2", 3 in 1 Edge, Fenton Vintage Grape Bowl
 494. M - 7", 6-Ruffle Fishscale and Beads Bowl
 495. M - 8 3/4", 10-Ruffle Apple Blossom Twigs Bowl
 496. B - 9 1/2", 3 in 1 Edge, Fenton Holly Bowl
 497. M - 5 1/4" Rd. Stippled Rays Bowl
 498. M - LBJ Hat Ashtray
 499. M - Leaf Fays Nappy
 500. M - 7", 8-Ruffle Apple Blossom Bowl
 501. M - 7 1/4", 8-Ruffle Grapes Bowl
 502. G - 9" Deep Rd. Imp. Grape Bowl
 503. Emerald G - 9" N Ruffled Greek Key Bowl - Large Crack
 504. G - 8 3/4" N PCE Grape & Cable Vt. Bowl - Cracked
 505. Amber - Imp. Pansy Creamer - Super - Cracked
 506. G - 5 1/4" Blackberry Ruffle 2-Row, O.E. Basket - Rare - Web Damage
 507. G - 5 1/4" Blackberry Ruffle 2-Row, O.E. Basket - Rare - Web Damage
 508. Lav. 7" Rd. Scroll Embossed and File Bowl
 509. A - PCE N Peacocks Bowl - Stunning - Tip Chip
 510. G - 9 1/2" Butterfly and Berry Vase - Base Chip
 511. A - 10" April Showers Vase - Chip
 512. P - 10 1/2" Target Vase - Chip
 513. P - Grape and Cable Tumblers - 2 for 1 Price
 514. P - N Raspberry Tumblers - 2 for 1 Price
 515. B - Stork and Rushes Tumbler - Chip
 516. M - Grape Arbor Tumbler - Chip
 517. M - Flute Open Sugar Bowl
 518. M - Fashion Punch Cup - Crack
 519. Amber - 6" Fenton Holly Hat - Base Chip
 520. A - 8" CRE Fenton Thistle Bowl - Rim Crack

THANK YOU FOR ATTENDING TODAY

SPECIAL NOTE:
 **CALENDAR OF AUCTION EVENTS**

**Harold Fortney Carnival Glass
 Estate Collection
 Saturday, June 23, 2001
 Boonville Center**

**July 7 & 8 at Boonville
 3rd Annual Antique Extravaganza**


**Saturday, August 18, 2001
 Carnival Glass at Boonville Center**

**Saturday, October 13, 2001
 Wichita, Kansas - Air Capital Convention**

**For Free Color Catalogs & Information Write:
 Mickey Reichel**

**516 Third Street, Boonville, MO 65233-1536
 or Call: 660-882-5292 days or
 660-882-5283 evenings**

E-mail: mreichel@undata.com

 **Website: www.yourauction page.com/reichel**
**Call today for 2001 bookings.
 (1 piece or entire collection!!)**

MICKEY REICHEL
ANTIQUE & AUCTION, L.C.
 516 THIRD STREET
 BOONVILLE, MO 65233-1536

PRESORTED
 FIRST CLASS MAIL
 US POSTAGE PAID
 SEDALIA, MO
 PERMIT 217

FIRST CLASS MAIL

RETURN SERVICE REQUESTED

SPECIAL INVITATION TO:

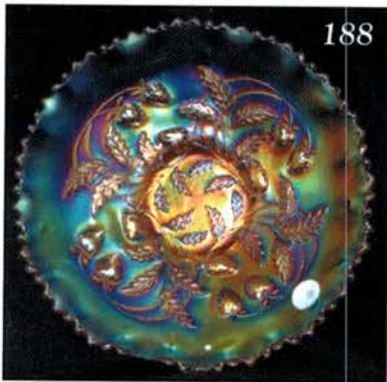


8*82*****MIXED AADC 650

LEE MARKLEY

PO BOX 306

MENTONE, IN 46539-0306



Top: 140, 141, 142, 456
 Middle: 144, 145, 146, 457
 Bottom: 252, 253, 255, 458



Top: 30, 32, 33, 34, 37
 Middle: 39, 47, 48, 50, 51
 Bottom: 43, 38, 52, 53, 54

