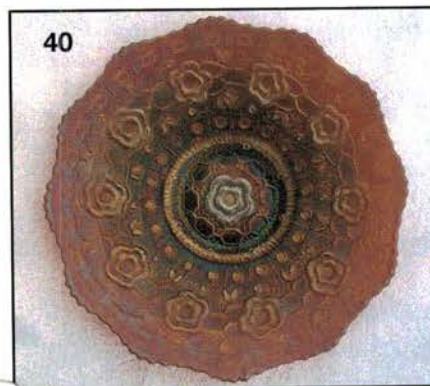
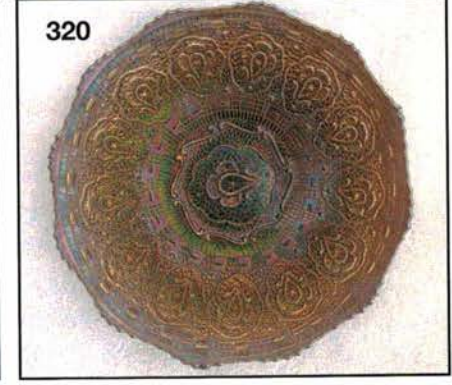
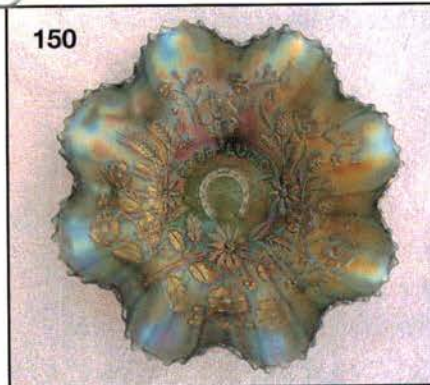
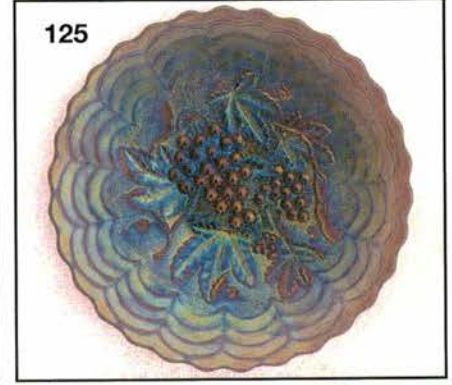
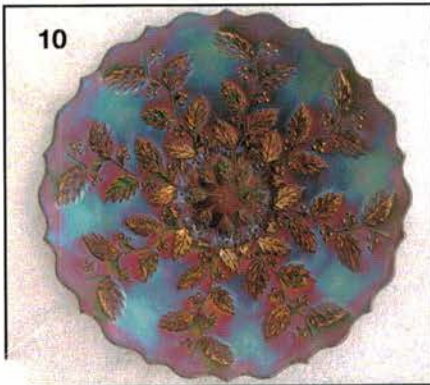


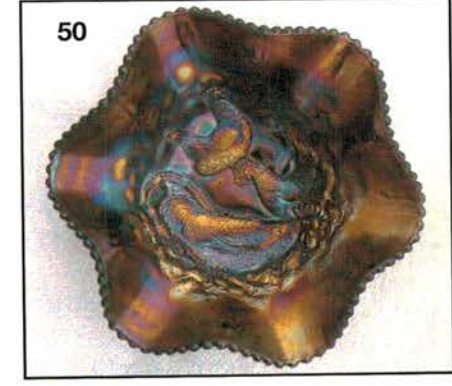
# OUTSTANDING CARNIVAL GLASS

# AUCTION

SATURDAY, MAY 12th, 2001  
9:30 AM



Holiday Inn -- Wentzville  
900 Corporate Parkway  
Wentzville, MO  
(Exit 212a off of I-70)  
Call (314) 327-7001 for reservations



**SATURDAY, MAY 12th, 2001 -- 9:30 am**

**Holiday Inn -- Wentzville, MO**

**PREVIEW:** Friday, May 11th, 5:00 P.M.

**NO BUYER'S PREMIUM**

We are back at the Wentzville Holiday Inn near St. Louis with a super nice collection of Carnival Glass to Auction. We have the Loughmiller collection, pieces from the Buschini collection, along with others. There is a nice selection of pink and green Brocaded Palms, Australian pieces plus a great variety of other quality pieces.

Notice that our preview is a little later than usual. We are not able to get into the room as early as we would like. Still should have plenty of time to view the glass.

**FOR RESERVATIONS:** Call (314) 327-7001 (Please ask for the Seeck Auction block of rooms)

**Terms:** Cash or Check with proper I.D.

\*\*\*\*\*

### **ABSENTEE BID POLICY**

1. Write-in bids will be accepted by sending the numbers of the item(s) desired and the amount bid on each to:  
**Seeck Auctions, PO Box 377, Mason City, Iowa 50402.**
2. If known by Auction Company, bids may be done over the telephone. (641)424-1116.
3. You may **email** your bids to us: **jimjan@seeckauction.com** Continue to include the numbers of the item(s) you would like to bid on and amount bid on each, please include your telephone number.
4. There is a \$5 handling charge for each successful bid. Shipping and insurance charges are additional.
5. Bidders will be notified by phone if their bid(s) are successful. This call will be made 1 - 3 days after the auction.
6. Please have all bids in by **Wed., May 9th**. All bids (by mail, phone or **email**) after this date may not be carried out.
7. Please place bids in the following increments: \$1 to \$300 - \$5 increments \$300 up - \$25 increments.
8. **If you do not receive an item that sold for less than your bid, assume we cancelled your bid because the piece of glass had below average color, manufacture problem, damage or was not listed correctly.**
9. We are discontinuing the availability of our auction price lists. Since so many people are online or have access to a computer, the need for this has slowly gone away. Auction results are posted on our website within 5 days of the auction (depending on drive time home from the sale.) Also results are available in many of the club newsletters.

**WEBSITE:** <http://www.seeckauction.com>

\*\*\*\*\*

- |  |   |
|--|---|
| ___ 1. Octagon wine - marigold   | ___ 16. Peacock Tail 9" IC shaped bowl - marigold   |
| ___ 2. Imperial Grape goblet - purple  | ___ <b>17. Enameled Forget Me Knot 7 pc. water set - green - rare &amp; pretty, crack in pitcher</b>    |
| ___ 3. Dugan Panelled tumbler - celest blue - stretch glass  | ___ 18. Grape & Cable ruffled hat - marigold - made from tumbler  |
| ___ 4. Stippled Grape & Cable tumbler - marigold - pretty  | ___ 19. Stippled Rays creamer - green   |
| ___ 5. Beaded Shell tumbler - purple   | ___ <b>20. Peacock at the Fountain fruit bowl - blue - very rare &amp; nice</b>                         |
| ___ 6. Grape & Cable sweetmeat - purple  | ___ <b>21. Peacock at the Fountain fruit bowl - marigold - scarce, pretty</b>                           |
| ___ 7. Stream Of Hearts compote - marigold - chip on base  | ___ 22. Floral & Grape tumbler - white - scarce   |
| ___ 8. Ten Mums tumbler - blue - minor separation at top   | ___ 23. Dandelion tumbler - white - scarce  |
| ___ 9. Industria Argentina Star 15" chop plate - marigold  | ___ <b>24. Holly goblet shaped compote - red - very scarce, nice</b>                                    |
| ___ <b>10. Holly 9" plate - blue - the best example I can remember seeing, WOW!</b>  | ___ <b>25. Dragon &amp; Lotus IC shaped bowl - red - fantastic red irid. on a cherry red base, WOW!</b> |
| ___ <b>11. Holly 9" plate - amethyst - also a super example, rare</b>  | ___ 26. Dragon & Lotus IC shaped bowl - blue  |
| ___ 12. Holly 9" plate - marigold  | ___ 27. Floral & Grape water pitcher - marigold - nice  |
| ___ 13. Raspberry gravy boat - purple - chip on foot   | ___ 28. Four Flowers 6" plate - peach opal - pretty   |
| ___ 14. Orange Tree shaving mugs (2) - blue - choice   | ___ 29. Footed Fine Rib 5 1/2" vase - blue  |
| ___ <b>15. Acorn Burrs 10 pc. punch set - ice green - a extreme rarity, is pretty but has two sets of two points that have been broken off &amp; glued back, is yours perfect?</b> |   |

- \_\_\_ **30. Orange Tree Loving Cup - amethyst - as pretty as these scarce items get**
- \_\_\_ 31. Orange Tree Loving Cup - marigold - nice
- \_\_\_ 32. M'burg Holly hddd bon bon - amethyst - radium, nice
- \_\_\_ 33. M'burg Holly hddd bon bon - green - radium
- \_\_\_ 34. M'burg Holly hddd bon bon - marigold - radium, nice
- \_\_\_ 35. Pansy ruffled pickle dishes (2) - green - choice
- \_\_\_ **36. N's Peacock at Urn IC bowl - purple - very pretty example, scarce**
- \_\_\_ 37. N's Peacock at Urn IC sauce - purple
- \_\_\_ **38. Miniature Thin Rib & Drape 4 1/2" vase - marigold - nice**
- \_\_\_ 39. Blackberry Spray square shaped hat - marigold - this is the version with two sets of blackberries
- \_\_\_ **40. Captive Rose 9" plate - amethyst - super example, very rare & desirable**
- \_\_\_ **41. Captive Rose 9" plate - blue - very scarce & nice**
- \_\_\_ 42. Holly CRE round shaped hat - marigold - scarce shape
- \_\_\_ 43. Hobstar & Feather punch cup - amethyst
- \_\_\_ 44. Hobstar & Feather punch cup - marigold
- \_\_\_ **45. Dragon & Lotus ruffled bowl - red - very scarce, pretty**
- \_\_\_ 46. Dragon & Lotus ruffled bowl - marigold
- \_\_\_ **47. Peacock & Grape spt ftd ruffled bowl - peach opal - scarce, nice**
- \_\_\_ 48. Orange Tree ftd tumbler - light lavender - very rare color, minor ruffness on feet
- \_\_\_ 49. M'burg Diamonds tumbler - green
- \_\_\_ **50. Farmyard ruffled bowl - purple - extremely rare & highly desirable pattern, great**
- \_\_\_ 51. Pepper Plant square shaped hat - blue
- \_\_\_ 52. Grape & Cable butterdish - green - scarce color, nice
- \_\_\_ 53. Six Petals ruffled bowl - peach opal
- \_\_\_ **54. Peacocks 9" plate w/ribbed back - ice blue - one of the better examples I have seen, dark color w/super irid.**
- \_\_\_ **55. Peacocks 9" plate w/ribbed back - purple - super pretty, scarce, a nice example**
- \_\_\_ **56. Peacocks 9" plate w/ribbed back - ice green - super pretty**
- \_\_\_ 57. Single Flower Framed ruffled bowl - peach opal
- \_\_\_ 58. Australian Butterfly Bower 7" ruffled dome ftd bowl - purple - scarce
- \_\_\_ 59. Australian Butterfly Bower 7" ruffled dome ftd bowl - marigold
- \_\_\_ **60. Peacock Lamp - red - very pretty red irid., are & desirable**
- \_\_\_ **61. Brocaded Palms 8" boubous ribbed vase - pink - pretty, the start to a nice grouping of pink brocaded Palm**
- \_\_\_ **62. Brocaded Palms ice bucket - pink - pretty, scarce**
- \_\_\_ 63. Brocaded Palms ftd candle holder - pink
- \_\_\_ 64. Brocaded Palms hddd two sides up dish - pink
- \_\_\_ 65. Brocaded Palms 9" hddd bowl - pink
- \_\_\_ **66. Brocaded Palms window box - pink - very scarce item**
- \_\_\_ 67. Brocaded Palms compote - pink - nice
- \_\_\_ **68. Brocaded Palms large centerpiece bowl w/scroll handles - pink - neat**
- \_\_\_ 69. Brocaded Palms 7" hddd plate - pink
- \_\_\_ **70. Stippled Grape & Cable 9" plate w/BW back - green - very rare color & nice**
- \_\_\_ 71. Blackberry Spray CRE round hat - marigold - this is very flat
- \_\_\_ **72. Rose Show ruffled bowl - aqua opal - pastel & super w/lots of opal**
- \_\_\_ **73. Rose Show ruffled bowl - marigold - scarce & nice**
- \_\_\_ 74. Basketweave Open Edge ruffled hat - red - scarce & desirable
- \_\_\_ 75. Persian Garden 6" plate - marigold
- \_\_\_ 76. Grape & Cable giant ruffled compote - purple - scarce
- \_\_\_ 77. Vintage powder jar - marigold
- \_\_\_ **78. Wishbone & Spades large ruffled bowl - peach opal - very scarce, pretty**
- \_\_\_ 79. Wishbone & Spades ruffled sauce - peach opal
- \_\_\_ **80. Springtime water pitcher - marigold - super pretty, very rare**
- \_\_\_ 81. Springtime tumbler - marigold
- \_\_\_ **82. Grape & Cable powder jar - horehound - very rare color, lid matches well, minor no harm nick on lid**
- \_\_\_ 83. Grape & Cable powder jar - green - minor nicks on lid
- \_\_\_ 84. Grape & Cable powder jar - purple - minor ruffness on lid
- \_\_\_ **85. Fruits & Flowers bon bon - aqua opal - one of the great ones, lots of opal, pretty pastel irid.**
- \_\_\_ **86. Fruits & Flowers bon bon - aqua opal - also pastel & super, not quite as much opal**
- \_\_\_ 87. Fruits & Flowers bon bon - ice green - very scarce, has chip on back edge
- \_\_\_ 88. Orange Tree powder jar - marigold - nice
- \_\_\_ 89. Australian Kookaburra large ruffled bowl - marigold - a very scarce bowl
- \_\_\_ **90. Shell 9" plate - smoke - very pretty, rare**
- \_\_\_ 91. Peacock & Grape ruffled bowl - lime green - very rare color
- \_\_\_ **92. Singing Birds 7 pc. water set - green - scarce & nice**
- \_\_\_ 93. Wide Rib 12" vase - peach opal
- \_\_\_ 94. Orange Tree IC shaped bowl - marigold - pretty

- \_\_\_ **95. Tree Trunk 6" squatty vase - ice blue - super pretty, rare**
- \_\_\_ 96. Holly CRE JIP hat - vaseline - pretty marigold overlay
- \_\_\_ 97. Holly CRE JIP hat - marigold - pretty, has burst in base
- \_\_\_ 98. Fenton's Grape & Cable 7" ruffled bowl - red - scarce & desirable
- \_\_\_ 99. Bells & Beads crimped edge ruffled bowl - peach opal
- \_\_\_ **100. Grape & Cable master 8 pc. punch set - purple - super pretty, very rare & desirable**
- \_\_\_ 101. Pansy pickle dish - amber
- \_\_\_ **102. Open Rose 9" plate - amber - super example**
- \_\_\_ 103. Open Rose 9" plate - marigold - pretty
- \_\_\_ 104. Four Seventy Four tumbler - violet blue - very rare color for this tumbler
- \_\_\_ **105. Panther ftd ruffled sauce - red - cherry red color, red irid, minor open bubble on foot**
- \_\_\_ 106. Panther ftd ruffled sauce - marigold
- \_\_\_ 107. Peach & Pear banana boat shaped berry bowl - marigold - has a wire handle to make a basket
- \_\_\_ **108. Fishermans mug - marigold - dark, fantastic**
- \_\_\_ 109. Fishermans mug - purple
- \_\_\_ **110. Stag & Holly chop plate - marigold - very rare & desirable, nice**
- \_\_\_ **111. Stippled Three Fruits 9" plate w/BW back - blue - very scarce color for these**
- \_\_\_ **112. Stippled Three Fruits 9" plate w/ribbed back - purple - nice, scarce**
- \_\_\_ **113. Stippled Three Fruits 9" plate w/ribbed back - marigold - also nice**
- \_\_\_ 114. Ripple 6" vase w/ 2 3/8" base - marigold
- \_\_\_ **115. Hearts & Flowers ruffled compote - aqua opal - very nice, highly desirable**
- \_\_\_ **116. Hearts & Flowers ruffled compote - marigold - nice**
- \_\_\_ 117. N's Bushel basket - ice green - nice
- \_\_\_ 118. Diamond Lace tumbler - purple
- \_\_\_ 119. Flute & Cane large size milk pitcher - marigold
- \_\_\_ **120. Stag & Holly ftd ruffled bowl - red - very rare, a super nice example**
- \_\_\_ 121. Inverted Strawberry spittoon - marigold - has crack, but rare
- \_\_\_ 122. Windmill ruffled bowls (2) - purple - choice
- \_\_\_ **123. Rustic 18" funeral vase - marigold - scarce, nice**
- \_\_\_ 124. Fan gravy boat - peach opal
- \_\_\_ **125. Imperial Grape 9" plate - purple - super pretty & very rare, a real dandy**
- \_\_\_ **126. Imperial Grape 6" plate - purple - also super**
- \_\_\_ **127. Imperial Grape 9" plate - amber - super pretty & very rare**
- \_\_\_ 128. Plaid IC shaped bowl - marigold - very desirable pattern
- \_\_\_ 129. Imperial Grape tumbler - purple
- \_\_\_ **130. Davidson Society Chocolates adv. two sides up plate - purple - pretty & highly desirable**
- \_\_\_ 131. Fine Cut & Roses candy dish - purple
- \_\_\_ **132. Stippled Three Fruits spt ftd ruffled bowl - aqua opal - pastel & nice**
- \_\_\_ 133. Holly ruffled hat shape - lime green - has marigold overlay
- \_\_\_ 134. Grape & Cable ruffled hat - marigold
- \_\_\_ **135. Poppy Show 9" plate - ice blue - very rare & desirable, minor nick on edge**
- \_\_\_ **136. Poppy Show 9" plate - marigold - has chip on base, pretty**
- \_\_\_ 137. Wide Panel handled basket - marigold - nick at top edge
- \_\_\_ 138. Dugan Cherries large ruffled bowl - peach opal - nice
- \_\_\_ 139. Vintage Banded mug - marigold
- \_\_\_ **140. Stippled Peacocks PCE bowl w/ribbed back - reninger blue - very pretty example of this rare bowl**
- \_\_\_ 141. Morning Glory JIP 11 1/2" vase - marigold
- \_\_\_ **142. Australian Swan ruffled bowl - purple - very pretty & scarce**
- \_\_\_ 143. Australian Swan ruffled sauce - purple - pretty
- \_\_\_ **144. Australian Swan ruffled bowl - marigold - nice**
- \_\_\_ **145. Stippled Rays 6" plate - red - very rare plate, highly desirable**
- \_\_\_ 146. Blackberry Spray ruffled hat - amber - very rare color, nice
- \_\_\_ 147. Blackberry Spray ruffled hat - powder blue - nice
- \_\_\_ 148. Blackberry Spray ruffled hat - blue
- \_\_\_ 149. 1910 General Furniture Co. Peacock Tail ruffled hat - green - scarce item
- \_\_\_ **150. Good Luck ruffled bowl w/ribbed back - sapphire - super pretty irid., extremely rare, neat!!!**
- \_\_\_ **151. Good Luck ruffled bowl w/ribbed back - lavender - also super pretty & rare**
- \_\_\_ 152. Good Luck ruffled bowl w/ribbed back - aqua opal - pastel & super, three points have been heavily buffed
- \_\_\_ 153. Singing Birds mug - green - nice
- \_\_\_ 154. Stippled Singing Birds mug - marigold
- \_\_\_ **155. Peacocks PCE bowl w/ribbed back - ice green - super example, as nice as they get, may have small pinpoint on the side of a point**
- \_\_\_ **156. Peacocks PCE bowl w/ribbed back - purple - a very pretty bowl, scarce**
- \_\_\_ **157. Peacocks PCE bowl w/ribbed back - amethyst - scarce, plus nice**

- \_\_\_ 158. **Peacocks PCE bowl w/ribbed back - marigold - lots of pretty yellow irid.**
- \_\_\_ 159. Pansy low ruffled bowl - lavender - nice
- \_\_\_ 160. **Grape & Cable turned in centerpiece bowl - ice blue - super pretty & very rare, nice piece**
- \_\_\_ 161. Miniature Morning Glory 6 1/2" vase - purple - nice
- \_\_\_ 162. Miniature Morning Glory 7 3/4" vase - marigold
- \_\_\_ 163. Panelled Dandelion tankard water pitcher - green - has crack by handle
- \_\_\_ 164. Luster Rose tumbler - amber
- \_\_\_ 165. **N's Eight Sided Bushel basket - ice green - rare basket, nice**
- \_\_\_ 166. N's Eight Sided Bushel basket - marigold - nice
- \_\_\_ 167. **N's Poppy pickle dish - green - scarce, nice**
- \_\_\_ 168. N's Poppy pickle dish - marigold - nice
- \_\_\_ 169. M'burg Boutonniere ruffled compote - amethyst - satin
- \_\_\_ 170. **Hearts & Flowers ruffled bowl w/ribbed back - ice green - very scarce & nice**
- \_\_\_ 171. **Hearts & Flowers ruffled bowl w/ribbed back - purple - nice, has tiny pinpoint on a point**
- \_\_\_ 172. **Hearts & Flowers ruffled bowl w/ribbed back - ice blue - a super example**
- \_\_\_ 173. Greek Key tumbler - marigold - nice
- \_\_\_ 174. Leaf Tiers tumbler - marigold
- \_\_\_ 175. **Fenton's Grape & Cable ftd ruffled bowl - blue opal - extremely rare color, has more opal than most Fenton blue opal pieces, WOW!**
- \_\_\_ 176. Swan salt - purple - scarce, nice
- \_\_\_ 177. Swan salt - celest blue
- \_\_\_ 178. Swan salt - ice green
- \_\_\_ 179. Swan salt - blue opal - contemporary
- \_\_\_ 180. **Memphis 5 pc. punch set - purple - very scarce set, highly desirable pattern**
- \_\_\_ 181. Two Flowers ftd ruffled sauce - lime green - very pretty example
- \_\_\_ 182. **Australian Kangaroo large ruffled bowl - purple - rare & nice**
- \_\_\_ 183. Grape & Cable Variant PCE bowl w/plain back - purple
- \_\_\_ 184. Octagon wine decanter - marigold - nice
- \_\_\_ 185. **Poinsettia & Lattice ftd ruffled bowl - blue - very rare color for this desirable pattern**
- \_\_\_ 186. Pansy hdlid nappy - purple - pretty
- \_\_\_ 187. N's Corn vase - ice green - always in demand
- \_\_\_ 188. Dugan Cherries ftd 3 in 1 edge bowl - peach opal - pretty
- \_\_\_ 189. Pinecone 6" plate - marigold
- \_\_\_ 190. **Fine Cut & Roses rosebowl - aqua opal - super pretty example, one foot has a minor pinpoint, but most of these have much more than that, extremely rare**
- \_\_\_ 191. Fine Cut & Roses rosebowl - marigold - has normal feet
- \_\_\_ 192. **Stippled Rays IC shaped sauce - red - very nice, scarce**
- \_\_\_ 193. Stippled Rays IC shaped sauce - amethyst - scarce color
- \_\_\_ 194. Stippled Rays deep round sauce - amber - scarce color
- \_\_\_ 195. **N's Peacock at the Fountain water pitcher - blue - very scarce & nice**
- \_\_\_ 196. Dugan's Peacock at the Fountain tumblers (4) - blue - choice
- \_\_\_ 197. Beaded Panels tri-cornered compote w/CRE - peach opal
- \_\_\_ 198. **Greek Key ruffled bowl w/ribbed back - purple - super**
- \_\_\_ 199. Lotus & Grape ftd round sauce - marigold
- \_\_\_ 200. **Persian Medallion bon bon - celest blue - super pretty & extremely rare, WOW!**
- \_\_\_ 201. **Persian Medallion bon bon - red - very rare & desirable**
- \_\_\_ 202. Grape & Cable 9" plate w/BW back - purple - has stretchy irid.
- \_\_\_ 203. **Floral & Grape water pitcher - blue - super, super pretty, scarce**
- \_\_\_ 204. Floral & Grape tumblers (4) - amethyst - choice
- \_\_\_ 205. **Heart & Vine 9" plate - blue - very pretty, scarce**
- \_\_\_ 206. Persian Medallion 6" plate - blue
- \_\_\_ 207. **Raspberry milk pitcher - purple - super example, scarce**
- \_\_\_ 208. **Raspberry milk pitcher - marigold - also super**
- \_\_\_ 209. **Stippled Peacocks 9" plate w/ribbed back - blue - super pretty, very scarce**
- \_\_\_ 210. Holly square shaped CRE hat - marigold
- \_\_\_ 211. Hobstar & Fruit 5" ruffled bowl - peach opal - scarce pattern
- \_\_\_ 212. **Scroll Embossed 9" plate - purple - super**
- \_\_\_ 213. Kittens cereal bowl - marigold
- \_\_\_ 214. Waterlily ftd ruffled sauce - vaseline
- \_\_\_ 215. **Nuart Homestead chop plate - purple - very rare & desirable, has nick on outside edge, nice**
- \_\_\_ 216. Four Seventy Four milk pitcher - marigold
- \_\_\_ 217. **Blackberry Block 7pc. tankard water set - blue - pretty but pitcher is cracked**
- \_\_\_ 218. **Blackberry Block tankard water pitcher - marigold - cracked**
- \_\_\_ 219. M'burg Daimonds tumbler - marigold
- \_\_\_ 220. **Hearts & Flowers PCE bowl - marigold - super, very rare**
- \_\_\_ 221. Lattice & Points hatshape - peach opal - has the daisy base
- \_\_\_ 222. Stork & Rushes JIP hat - marigold
- \_\_\_ 223. Strawberry 9" plate w/BW back - green - nice
- \_\_\_ 224. Strawberry 9" plate w/BW back - marigold - nice

- \_\_\_ 225. **Peacocks ruffled bowl w/ribbed back - ice blue - super nice, very rare**
- \_\_\_ 226. **Peacocks ruffled bowl w/ribbed back - aqua opal - super pretty w/lots of opal, rare & desirable**
- \_\_\_ 227. **Peacocks ruffled bowl w/ribbed back - green - very scarce color plus super nice**
- \_\_\_ 228. **Peacocks ruffled bowl w/ribbed back - purple - very nice, scarce**
- \_\_\_ 229. **Peacocks ruffled bowl w/ribbed back - marigold - super**
- \_\_\_ 230. **Carolina Dogwood 9" plate - marigold on milk glass - super pretty, no question it's a plate, only one I've seen**
- \_\_\_ 231. Blackberry Spray square shaped hat - blue
- \_\_\_ 232. Grape & Cable punch cups (2) - ice blue - if you need them, they are rare, choice
- \_\_\_ 233. Grape & Cable punch cup - lime green - rare
- \_\_\_ 234. Stretch Glass candlestick - celest blue - plate 64 in Stretch glass book
- \_\_\_ 235. **Tree Trunk 11" vase - ice blue - very pretty, rare**
- \_\_\_ 236. M'burg Cherries tumbler - amethyst - polished at factory on bottom, minor pinpoint on side of bottom, rare
- \_\_\_ 237. Blackberry Block tumbler - green - scarce
- \_\_\_ 238. **Stippled Strawberry 9" plate - marigold - super rare & nice, a very tough plate**
- \_\_\_ 239. Fentonia tumbler - blue - nice
- \_\_\_ 240. **Stippled Grape & Cable Variant 9" plate w/ribbed back - green - very rare & nice**
- \_\_\_ 241. Birds & Cherries bon bon - green - pretty
- \_\_\_ 242. **The Great House of Issac Benesch & Sons adv. ruffled bowl - amethyst - pretty example, scarce**
- \_\_\_ 243. Tiger Lily 6 pc. water set - marigold
- \_\_\_ 244. Luster Rose fernery - violet blue - scarce Imperial color
- \_\_\_ 245. **Daisy & Drape flared out vase - aqua opal - nice opal, scarce**
- \_\_\_ 246. Blackberry Banded ruffled hat - marigold on moonstone - very scarce item
- \_\_\_ 247. Fashion breakfast sugar - green - very rare color if you need it
- \_\_\_ 248. Australian Magpie large ruffled bowl - purple - super pretty
- \_\_\_ 249. M'burg Seacoast pintray - amethyst - very rare, has large chip on back edge
- \_\_\_ 250. **M'burg Courthouse IC shaped bowl - amethyst - radium & super, hard to find in this shape**
- \_\_\_ 251. Imperial Grape wine bottle - marigold
- \_\_\_ 252. Drapery rosebowl - aqua opal - pastel, pretty
- \_\_\_ 253. Starfish ruffled compote - peach opal - pretty
- \_\_\_ 254. Grape & Cable 6" plate - purple
- \_\_\_ 255. Fenton's Peacock at Urn 9" plate - marigold - scarce, nice
- \_\_\_ 256. **Brocaded Palms ice bucket - ice green - very neat piece**
- \_\_\_ 257. **Brocaded Palms oval shaped covered compote - ice green - another neat piece**
- \_\_\_ 258. **Brocaded Palms center hldd sandwich tray - ice green - scarce**
- \_\_\_ 259. **Brocaded Palms large ftd centerpiece bowl - ice green - nice**
- \_\_\_ 260. **Brocaded Palms candlesticks with Scroll sides - ice green - very neat set**
- \_\_\_ 261. Brocaded Palms ftd candlestick - ice green
- \_\_\_ 262. **Brocaded Palms whipped cream pail - ice green - neat piece**
- \_\_\_ 263. Brocaded Palms hldd 9" bowl - ice green
- \_\_\_ 264. Brocaded Palms two sides up handled dish - ice green
- \_\_\_ 265. Brocaded Palms 7" hldd plate - ice green
- \_\_\_ 266. Brocaded Palms 5" hldd bowl - ice green
- \_\_\_ 267. Brocaded Palms 10" hldd plate - ice green
- \_\_\_ 268. **N's Thin Rib 7" squatty vase - ice blue - very scarce item, nice**
- \_\_\_ 269. Four Pillers 11" vase - aqua opal - nice
- \_\_\_ 270. **Eat Paradise Sodas 6" adv. plate - amethyst - scarce, nice**
- \_\_\_ 271. Ski Star dome ftd banana shaped CRE bowl - peach opal
- \_\_\_ 272. Grape & Cable hatpin holder - purple - always in demand
- \_\_\_ 273. **Luster Rose ftd fruit bowl - light amber - very rare bowl, nice**
- \_\_\_ 274. Fieldflower tumbler - violet blue - rare tumbler
- \_\_\_ 275. **M'burg Hobnail spittoon - amethyst - fantastic radium irid.**
- \_\_\_ 276. Raspberry tumbler - green
- \_\_\_ 277. Acorn Burrs tumbler - purple
- \_\_\_ 278. Dragon & Lotus ruffled bowl - red - two large chips on edge
- \_\_\_ 279. Cosmos & Cane tumbler - honey amber - rare tumbler
- \_\_\_ 280. **Australian Shrike or Thunderbird large ruffled bowl - purple - nice**
- \_\_\_ 281. Beaded Cable rosebowl - marigold - dark, nice
- \_\_\_ 282. Three Fruits 9" plate w/BW back - purple
- \_\_\_ 283. Vintage 9" ruffled bowl - green
- \_\_\_ 284. **N's Dandelion tankard water pitcher - green - rare, nice, crack in handle**
- \_\_\_ 285. N's Dandelion tumbler - green
- \_\_\_ 286. Grape & Cable tankard tumbler - purple
- \_\_\_ 287. Grape & Cable tankard tumbler - green
- \_\_\_ 288. Peach tumbler - white - has gold decoration, some has worn off
- \_\_\_ 289. Basketweave Open Edge ruffled basket - red - desirable

- \_\_\_ 290. Target 10" vase - peach opal
- \_\_\_ **291. Nippon PCE bowl w/ribbed back - ice blue - nice**
- \_\_\_ 292. Grape & Cable bon bon - marigold
- \_\_\_ **293. Imperial Grape water carafe - purple - very pretty**
- \_\_\_ 294. Corn bottle - marigold - nice
- \_\_\_ 295. Beaded Shell mug - blue - very hard to find color
- \_\_\_ **296. Grape & Cable hatpin holder - ice blue - extremely rare & pretty, repaired foot**
- \_\_\_ 297. Butterfly & Berry butter dish - blue - very hard to find table set piece
- \_\_\_ 298. Apple Blossom Twigs ruffled bowl - peach opal - scarce
- \_\_\_ 299. Windmill ruffled sauce - marigold
- \_\_\_ **300. Good Luck 9" plate w/ribbed back - marigold - fantastic example, as pretty as they get**
- \_\_\_ 301. Persian Garden fruit bowl base - white
- \_\_\_ **302. Carolina Dogwood ruffled bowl - blue opal - scarce**
- \_\_\_ 303. Scroll Embossed ashtray - marigold - Sowerby
- \_\_\_ 304. Nautilus whimsey creamer - peach opal - nice
- \_\_\_ 305. Luster Rose round bowl - green
- \_\_\_ 306. Honeycomb rosebowl - peach opal - nice
- \_\_\_ 307. M'burg Cherries butterdish lid - green, Hobnail sugar bowl lid - marigold - sugar lid has crack so sold together
- \_\_\_ 308. Grape & Cable Variant 9" plate w/plain back - purple - super
- \_\_\_ 309. Peacock at the Fountain punch cup - reninger blue - scarce
- \_\_\_ 310. M'burg Multi Fruits & Flowers punch cup - amethyst
- \_\_\_ 311. Sun's Up hatpin - lavender - rare hatpin
- \_\_\_ 312. Rooster hatpins w/black background - blue, light blue, green, lavender, white, amber, red - choice
- \_\_\_ 313. All dark hatpins including Bars & Beads, Border Path Variant, Tufted Throw Pillow, Dragonflies, Spiral Dance, Flower Arcs, Butler's Mirror - choice
- \_\_\_ 314. Hatpins including Six Plums - dark, Top of the Morning - dark, Big Butterfly (2) - dark, Dimples & Brilliants - dark, Triad - dark, Waves - chocolate, Coolie Hat - dark, Bullet - dark, Good Luck - lavender(new) - choice
- \_\_\_ **315. Wishbone 9" ftd plate - purple - scarce & nice**
- \_\_\_ 316. Basketweave miniature basket - marigold
- \_\_\_ 317. Fanciful ruffled bowl - peach opal - scarce
- \_\_\_ 318. Little barrel - marigold - nick on top
- \_\_\_ 319. Grape & Gothic Arches small berry bowl - green
- \_\_\_ **320. Persian Medallion 9" plate - blue - fantastic example, rare, super**
- \_\_\_ 321. Wide Panel 8" vase - marigold
- \_\_\_ 322. Florasun gold ruffled bowl - marigold, Star & File Champagne - marigold, Flute & Cane sherbert - marigold, Flute & Cane underplate - marigold, Octagon sherbert - marigold - choice
- \_\_\_ 323. Dahlia 7 pc. water set - ice blue - new
- \_\_\_ 324. Orange Peel sherbert - teal, Heart Band mug - marigold, Heart Band tumbler - green, Enameled Magnolia & Drape tumbler - marigold, Octagon goblet - marigold - choice
- \_\_\_ 325. Luster Flute hats(2) - marigold, Towers hat - marigold, Luster Flute hat - amethyst - choice
- \_\_\_ 326. All punch cups: Fashion(2) - lavender, Acorn Burrs - purple, Memphis - purple, Orange Peel - amethyst, Many Fruits - purple - choice
- \_\_\_ 327. Tumblers: Wisteria - ice blue - large chips on base, Grape Arbor - white - chipped, Double Star - amethyst - rare, Soda Gold - smoke, Stork & Rushes - marigold, Crab Claw - marigold - choice

# Seeck Auctions

# Seeck Auctions

PRESORTED  
FIRST-CLASS MAIL  
U.S. POSTAGE PAID  
MINNEAPOLIS, MN  
PERMIT NO.28534

P.O. Box 377  
Mason City, Iowa 50402



\*\*\*\*\*AUTO\*\*MIXED AADC 553

Lee Markley  
PO Box 306  
Mentone, IN 46539-0306

