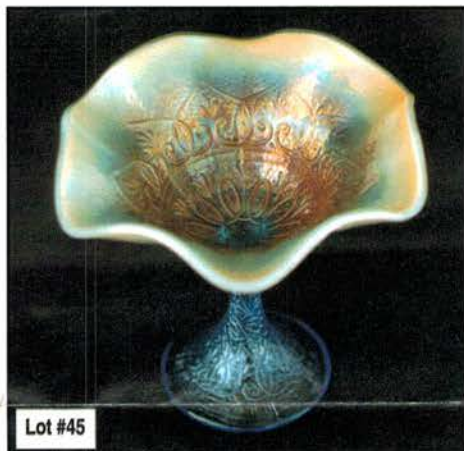


Lot #20



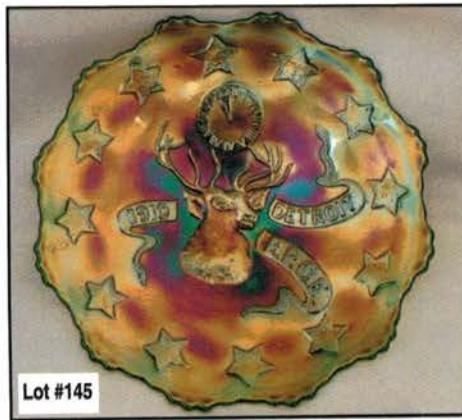
Lot #45



Lot #85



Lot #75



Lot #145



Lot #240

BURNS

AUCTION SERVICE

presents

The 2001 H.O.A.C.G.A. Convention Auction

**Saturday, April 28, 2001
9:30 A.M.**

**Preview 6:00 P.M. Friday Evening
& 7:00 A.M. Saturday Morning**

at the

Embassy Suites, K.C.I. Airport

7640 N.W. Tiffany Springs Parkway
Kansas City, Missouri 64135 • (816) 891-7788
(Exit 10 off I-29)

Kansas City...Kansas City, here I come! Well, just to let you know – I have had the chance to stand on the corner of 12th Street and Vine...been there, done that! So this time when I show up, it won't be to tour the town...we're gonna have ourselves an auction.

It's that time of year again and it's our pleasure to present you with the collection of Mr. and Mrs. Danny McFalls from Tennessee. Danny has been picking up pieces for the last 10-15 years and has acquired a collection that the H.O.A.C.G.A. group will have fun with. The collection has a little bit of everything from rare Northwood to a fantastic selection of advertising items. As tough as these items are to find, this is the place to find them. There should be something for everyone!

The Embassy Suites near the K.C.I. Airport will host the event. Those familiar with the area will know how to get there; for the rest of us, the March 2001 Newsletter has specific directions to the facilities. In simple terms, if you're on I-29, take Exit 10-Tiffany Springs Parkway and the motel should be on your left. For further information, call the motel direct at (816) 891-7788.

The Convention itself will run from Wednesday, April 25 (featuring Dirty Bingo) through Sunday morning, April 29, ending with a complimentary breakfast. This is probably as good as a glass convention gets, so do yourself a favor and make your plans, you won't be sorry (and, who knows, we may go down to the corner of 12th Street and Vine). See ya there!

For further information on the convention call President Robert Grissom at (816) 356-5320 or e-mail him at bobimocg@aol.com.

CHECK OUT BURNS AUCTION SERVICE ON THE WEB!

Visit our new Web site for information on upcoming auctions, complete auction listings and photos of auction highlights. You can e-mail your bids or requests for information.

<http://carnival.ksnews.com/burnsauction> e-mail: brnzauctsv@aol.com

BURNS AUCTION SERVICE

Tom Burns
P.O. Box 608, Bath, NY 14810
(607) 776-7942
Cell #: (607) 731-9302 (do not leave messages)

Bill Richards
44 Water St., Poland, OH 44514
(330) 757-2001
FAX (330) 757-4917

Bill Richards, III
2253 Country Lane
Poland, OH 44514
(330) 755-2620

Mail Bids honored under the following conditions:

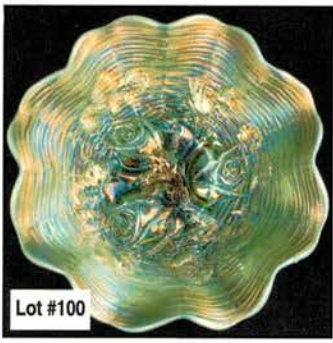
1. No deposit required. Bidders will take full responsibility to honor any and all bids we execute for them. Payment in full plus postage and handling required after notification and before we ship any item to them.
2. Items are bid on in perfect condition with average or above average iridescence OR as listed in the brochures. Bids will not be carried out when damage on an item has been found during the auction. **PEOPLE PRESENT AT AUCTION ARE RESPONSIBLE FOR FINDING ANY PINHEADS, WEAR, SPOTTINESS, MANUFACTURER'S DEFECTS OR ANY OTHER MINOR FLAWS, ETC.**
3. Successful bidders will be notified by collect call from the auctioneer (**so be sure to include the phone number**).
4. Phone inquiries about the glass or any other questions are welcome.
5. If you have some other person at the auction bidding for you, they must pay for the item before taking it.
6. Any terms or conditions given the day of the auction will supersede any previously published information.
7. Mail, e-mail, fax and phone bids are due by Wednesday, April 25, 2001.

- | | |
|---|--|
| <p>____ 1. Pastel Swan – Celeste Blue</p> <p>____ 2. Pastel Swan – Black (not carnival; very scarce)</p> <p>____ 3. European (?) "3 in 1" Type Patterned Lg. Wine Decanter and Stopper Lt. Mari. (odd item; haven't seen another)</p> <p>____ 4. European "Berry Band" (?) Hair Receiver w/ Metal Lid – Mari. (scarce; unusual)</p> <p>____ 5. European Omnibus Handled Water Pitcher – Mari. (rare; pretty nice color)</p> <p>____ 6. European African Shield Flared Vase w/ Metal Frog – Dk. Mari. (super example w/ original metal top)</p> <p>____ 7. Imperial Pansy Round Handled Nappy – Purp. (very scarce; really nice color and irid.)</p> <p>____ 8. Imperial Lustre Rose Covered Butter Dish – Amber (very rare color for this item; really tough)</p> <p>____ 9. 4-3/4" Tall x 4-3/4" Flare Imperial Stretch Paneled Squatty Flared Vase – Amberina (quite a rare item; nice size and look)</p> <p><u>1000</u> ____ 10. 9" FENTON CORAL FLAT PLATE – DK. MARI. (VERY RARE AND VERY DESIRABLE; ONE OF THE BETTER EXAMPLES I'VE SEEN)</p> <p>____ 11. 10" FENTON PERSIAN MEDALLION CHOP PLATE – BLUE (RARE AND DESIRABLE; NICE IRID. AND DETAIL)</p> <p>____ 12. FENTON HORSEHEAD MEDALLION FTD. NUT BOWL – PURPLE SLAG (EXTREMELY RARE BASE COLOR AND EFFECT; REALLY DIFFERENT)</p> | <p>____ 13. FENTON 2 ROW OPEN EDGE LG. 2 SIDED HAT – ICE BLUE (RARE AND VERY DESIRABLE COLOR AND SHAPE; REALLY NICE)</p> <p>____ 14. Westmoreland Daisy Squares 2 Sided Crimped Edge Compote – Mari. (very scarce item; rare and desirable shape)</p> <p>____ 15. 10" Tall Dugan Spiralex Swung Vase – Blue (rare base color for this item)</p> <p>____ 16. Dugan Open Opals Ruffled Compote – Pastel Mari. (quite a rare color for this item; usually P. Opal.)</p> <p>____ 17. N Grape Arbor 6 Ruffled Hat – Blue (very rare color for this item; has multi-colored irid.)</p> <p>____ 18. N Flute (or Wide Panel) 7 Pc. Master Salt Set – Mari. (very scarce set to find complete in any color)</p> <p>____ 19. N Thin Rib Jester's Cap (J.I.P.) Standard Size Vase – Green (rare and desirable shape; satiny finish)</p> <p><u>5500</u> ____ 20. N TORNADO STANDARD SIZE TRI-CORNERED VASE – WHITE (EXTREMELY RARE COLOR FOR THIS PATTERN; THIS EXAMPLE ONCE BELONGED TO DON MOORE)</p> <p>____ 21. N TORNADO STANDARD SIZE TRI-CORNERED VASE – PURP. (VERY SCARCE AND VERY DESIRABLE; NICE COLOR AND IRID; HAS DEEP SCRATCH)</p> <p>____ 22. N TORNADO LARGE SIZE TRI-CORNERED VASE – GREEN (ANOTHER VERY SCARCE ITEM; GREAT COLOR AND IRID.; NICE)</p> |
|---|--|

- 1300 23. N RIBBED TORNADO STANDARD SIZE TRI-CORNERED VASE – LT. AMYTH. (VERY RARE AND DESIRABLE; AS CLOSE TO LAVENDER AS YOU CAN GET; REALLY NICE)
- 2600 24. N RIBBED TORNADO STANDARD SIZE TRI-CORNERED VASE – BLUE (ANOTHER SUPER EXAMPLE OF A VERY DESIRABLE ITEM IN A RARE COLOR)
- 2300 25. 19" TALL X 5-1/4" BASE N TREE TRUNK SWUNG FUNERAL VASE – GREEN (VERY RARE; YOU DON'T SEE TOO MANY OF THESE FOR SALE; SMALL MANUF. CHECK IN BODY; NICE COLOR)
26. 7" TALL N TREE TRUNK SQUATTY SWUNG STANDARD SIZE VASE – ICE GREEN (SUPER DESIRABLE SIZE W/ EXCELLENT FROSTY IRID.)
27. 11" TALL X 4-3/4" BASE N TREE TRUNK MID-SIZE SWUNG VASE – HOREHOUND (VERY RARE BASE COLOR IN THIS ITEM; VERY DESIRABLE COLOR AND IRID.)
28. 10" TALL N TREE TRUNK STANDARD SWUNG VASE – AQUA OPAL. (PASTEL EXAMPLE THAT HAS GREAT IRID.)
29. 11" Tall N Tree Trunk Standard Swung Vase – Ice Blue (very scarce; nice base color and irid.)
- 1200 30. 13-3/4" TALL X 4-3/4" BASE N THIN RIB MID-SIZE SWUNG VASE – SAPPHIRE (RARE AND VERY DESIRABLE; EXCELLENT BASE COLOR W/ NICE IRID.)
31. 6-1/4" TALL X 8" FLARE X 4-3/4" BASE N THIN RIB SQUATTY JARDINIERE VASE – PURP. (VERY RARE AND UNUSUAL SHAPE FOR THIS MOLD; REALLY DIFFERENT)
32. N CORN VASE W/ PLAIN BASE – DK. MARI. (HAS TO BE ONE OF THE BETTER EXAMPLES I'VE SEEN IN A LONG TIME; NICE)
33. N Corn Vase w/ Stalk Base – Lime Ice Green (very scarce color w/ a slight marigold overlay)
34. N DAISY AND DRAPE FTD. FLARED VASE – AQUA OPAL. (ANOTHER NICE NORTHWOOD ITEM; VERY SCARCE)
35. N DAISY AND DRAPE FTD. TURNED IN VASE – DK. MARI. (VERY SCARCE W/ NICE COLOR AND IRID.)
36. N Blossomtime Stemmed Ruffled Compote – Dk. Mari. (super example w/ great color and irid.)
37. N Harvest Poppy Stemmed Ruffled Compote – Pastel Mari. (rare pattern w/ a nice pastel overlay)
38. N Basket of Roses Stippled Handled Bon Bon – Dk. Mari. (one of the better examples of this item I've seen)
39. 12-1/4" Tall N Four Pillars Swung Vase – Aqua Opal. (very scarce; nice opal. all the way to the feet)
- 2250 40. 9-1/2" TALL N FOUR PILLARS SWUNG VASE – MARI./ CUSTARD (EXTREMELY RARE AND VERY DESIRABLE PASTEL ITEM)
41. 9" Tall N Four Pillars Variant Swung Vase – Black Amyth. (rare base color; has a small ding on base)
42. N ORIENTAL POPPY TANKARD WATER PITCHER – GREEN (RARE AND DESIRABLE ITEM; HAS BRIGHT SATINY IRID.)
43. N ORIENTAL POPPY TANKARD WATER PITCHER W/ RIBBED INT. – PURP. (RARE AND DESIRABLE; NICE BRIGHT MULTI-COLORED IRID.)
44. N Petals Stemmed Ruffled Compote – Green (satiny finish)
- 3000 45. N HEART AND FLOWERS STEMMED RUFFLED COMPOTE W/ RIBBED EXT. – POWDER BLUE OPAL. (EXTREMELY RARE COLOR IN A DESIRABLE PATTERN; SUPER BASE COLOR, OPAL. AND IRID.)
46. N HEART AND FLOWERS STEMMED RUFFLED COMPOTE W/ RIBBED EXT. – PERSIAN BLUE OPAL. (RARE BASE COLOR; LOOKS LIKE AN AQUA OPAL. EXAMPLE W/ AN OPAQUE BASE)
47. N Heart and Flowers Stemmed Ruffled Compote w/ Ribbed ext. – Aqua Opal. (rare and desirable; nice example w/ a bright pastel finish)
48. N Heart and Flowers Stemmed Ruffled Compote w/ Ribbed Ext. – Aqua Opal. (rare and desirable; has a darker blue base w/ a butterscotch overlay)
49. N HEART AND FLOWERS STEMMED RUFFLED COMPOTE W/ RIBBED EXT. – ELEC. BLUE (RARE AND DESIRABLE W/ ATTRACTIVE BLUE HIGHLIGHTS)
- 1250 50. N HEART AND FLOWERS STEMMED RUFFLED COMPOTE W/ RIBBED EXT. – GREEN (VERY RARE AND VERY DESIRABLE; HAS NICE BRIGHT HIGHLIGHTS)
51. N HEART AND FLOWERS FLAT PLATE W/ RIBBED EXT. – LIME ICE GREEN (VERY RARE BASE COLOR W/ GREAT IRID.; HAS SMALL CHECK IN COLLAR BASE)
52. N HEART AND FLOWERS FLAT PLATE W/ RIBBED EXT. – PASTEL MARI. (VERY RARE; HAS REALLY BRIGHT PASTEL IRID.)
- 1250 53. N HEART AND FLOWERS BOWL W/ 3 IN 1 EDGE AND RIBBED EXT. – LIME ICE GREEN (ANOTHER RARE N'WOOD BASE COLOR IN A RARE SHAPE)
54. N HEART AND FLOWERS BOWL W/ 3 IN 1 EDGE AND RIBBED EXT. – WHITE (RARE AND DESIRABLE ITEM; HAS SUPER IRID.)
- 1075 55. N HEART AND FLOWERS BOWL W/ 3 IN 1 EDGE AND RIBBED EXT. – PURP. (RARE AND VERY DESIRABLE; GREAT IRID.; BRIGHT YELLOW IN CENTER)
56. N HEART AND FLOWERS BOWL W/ 3 IN 1 EDGE AND RIBBED EXT. – MARI. (ANOTHER SCARCE N'WOOD ITEM; GREAT COLOR AND IRID.)
57. N Heart and Flowers Ruffled Bowl w/ Ribbed Ext. – Ice Green (very scarce and desirable; nice color and irid.)
58. N Fern/ Daisy and Plume Stemmed Ruffled Compote – Mari. (scarce; nice color and irid.)
59. N Poppy Oval Ruffled Relish Tray w/ Ribbed Ext. – Elec. Blue (super example; has bright blue highlights)
- 2600 60. N NIPPON BOWL W/ P.C.E. AND RIBBED EXT. – HONEY AMBER (ONE OF THE BEST N'WOOD ITEMS I'VE SEEN; BRIGHT, BRIGHT IRID. ON A RARE BASE GLASS)
61. N Nippon Ruffled Bowl w/ Ribbed Ext. – Ice Green (very scarce item; has a 1/8" chip between points)
62. N Blackberry Stemmed Ruffled Compote w/ Basketweave Ext. – Horehound (extremely rare base color for this item; really nice)
63. N EMBROIDERED MUMS FLAT PLATE W/ RIBBED EXT. – ICE GREEN (RARE ITEM W/ NICE AVERAGE COLOR AND IRID.)
64. N Embroidered Mums Ruffled Bowl w/ Ribbed Ext. – Blue (very scarce w/ great irid.; has small chip on base)
- 2500 65. N G & C 12 PC. MASTER RUFFLED PUNCH SET – PURP. (RARE AND VERY DESIRABLE SET W/ NICE MULTI-COLORED IRID.)
- 2500 66. N G & C 12 PC. MASTER RUFFLED PUNCH SET – MARI. (RARE AND VERY DESIRABLE SET W/ NICE SATINY MULTI-COLORED IRID.)
- 2500 67. N G & C MID-SIZE RUFFLED PUNCH BOWL AND BASE – TEAL/ GREEN BASE (EXTREMELY RARE COLOR FOR THIS ITEM; THEY ALL HAVE GREEN BASES; SMALL BRUISE ON BOWL)
68. N G & C LG. RUFFLED STEMMED COMPOTE – LAVENDER (AN EXTREMELY RARE BASE COLOR W/ SUPER IRID.)
69. N G & C Lg. Ruffled Stemmed Compote – Amyth. (rare and desirable item w/ nice even irid.)

- 1600 70. **N G & C VARIANT STIPPLED BOWL W/ P.C.E. AND RIBBED EXT. – AQUA OPAL. (EXTREMELY RARE AND VERY DESIRABLE; GREAT OPAL. AND IRID.)**
- ___ 71. **N G & C VARIANT STIPPLED BOWL W/ P.C.E. AND RIBBED EXT. – ELEC. BLUE (DESIRABLE ITEM W/ GREAT BLUE HIGHLIGHTS)**
- ___ 72. N G & C Variant Plate w/ Ribbed Ext. and "Old Rose Distillery" Advert. – Green (rare and desirable; nice irid. and color)
- ___ 73. **N G & C LG. FTD. CENTERPIECE BOWL W/ PLAIN EDGE – PEARLIZED CUSTARD (VERY RARE AND VERY DESIRABLE; SUPER COLOR; SOME GOLD TRIM IS WORN)**
- ___ 74. N G & C Perfume Bottle and Stopper – Purp. (rare and desirable; nice color; open bubble on stopper)
- 4500 75. **N PEACOCK AT THE FOUNTAIN RUFFLED PUNCH BOWL AND BASE – ICE GREEN (VERY RARE AND A VERY ATTRACTIVE EXAMPLE W/ SUPER IRID.; BOWL HAS SMALL IRIDIZED BLEMISH AND BASE HAS TINY FLAKE)**
- ___ 76. (2) N Peacock at the Fountain Handled Punch Cups – Ice Green (very rare items; selling choice)
- ___ 77. **N PEACOCK AT THE FOUNTAIN 5 PC. WATER SET – WHITE (RARE AND DESIRABLE SET; FROSTY AND WELL MATCHED)**
- ___ 78. **N PEACOCK AT THE FOUNTAIN COVERED BUTTER DISH – GREEN (VERY RARE COLOR FOR THIS ITEM; SUPER IRID. AND NICE)**
- ___ 79. N Peacock at the Urn Ind. Ice Cream Bowl – White (scarce item w/ average irid.)
- 2250 80. **N PEACOCK AT THE URN STIPPLED LG. ICE CREAM BOWL – ELEC. BLUE (RARE AND EXTREMELY DESIRABLE; HAS SUPER, SUPER COLOR AND IRID.)**
- 3250 81. **N PEACOCK AT THE URN STIPPLED LG. ICE CREAM BOWL – PEARLIZED CUSTARD (A RARE AND UNUSUAL ITEM WE'LL TALK ABOUT AT THE AUCTION)**
- ___ 82. N Peacock at the Urn Stippled Ind. Ice Cream Bowl – Blue (scarce item w/ nice multi-colored irid.)
- ___ 83. N Peacock at the Urn Flared Chop Plate – Amyth. (rare item w/ nice color and finish; may have pinhead)
- ___ 84. N Butterfly 2 Handled Bon Bon – Green (nice color and irid.)
- 5500 85. **N PEACOCKS RUFFLED BOWL W/ RIBBED EXT. – POWDER BLUE OPAL. (EXTREMELY RARE BASE COLOR W/ GREAT OPAL. AND SUPER IRID.; REALLY NICE)**
- ___ 86. **N PEACOCKS RUFFLED BOWL W/ RIBBED EXT. – AQUA OPAL. (RARE AND VERY DESIRABLE; NICE OPAL. AND PASTEL IRID.)**
- ___ 87. N Peacocks Ruffled Bowl w/ Ribbed Ext. – White (rare and desirable; nice color and irid.)
- ___ 88. **N PEACOCKS RUFFLED BOWL W/ RIBBED EXT. – GREEN (RARE AND DESIRABLE W/ BRIGHT YELLOW AND BLUES)**
- ___ 89. N Peacocks Ruffled Bowl w/ Ribbed Ext. – Amyth. (very scarce and has nice multi-colored irid.)
- ___ 90. **N PEACOCKS STIPPLED PLATE W/ NARROW BASE AND RIBBED EXT. – RENNINGER BLUE (RARE AND VERY DESIRABLE ITEM; HAS CINDER ON FACE AND ALSO HAS A SMALL SCRATCH)**
- 1100 91. **N PEACOCKS FLARED PLATE W/ RIBBED EXT. – ELEC. BLUE (RARE W/ GREAT BLUE HIGHLIGHTS AND DETAIL)**
- 1000 92. **N PEACOCKS FLARED PLATE W/ RIBBED EXT. – AMYTH. (RARE, DESIRABLE; HAS A BRIGHT RADIUM TYPE IRID.)**
- 1000 93. **N PEACOCKS FLAT PLATE W/ RIBBED EXT. – GREEN (RARE AND DESIRABLE COLOR; HAS NICE IRID. W/ MANUF. RIPPLES IN GLASS)**
- ___ 94. N Singing Bird Stemmed Covered Sweetmeat Compote – Crystal (scarce shape for this pattern)
- ___ 95. **N GOOD LUCK PLATE W/ RIBBED EXT. – GREEN (RARE AND VERY DESIRABLE COLOR; NICE COLOR AND IRID.)**
- ___ 96. **N GOOD LUCK 8 RUFFLED BOWL W/ BASKETWEAVE EXT. – HOREHOUND (RARE BASE COLOR W/ NICE IRID.; SUPER EXAMPLE)**
- ___ 97. N Good Luck Bowl w/ P.C.E. and Ribbed Ext. – Mari. (very scarce; has nice color and irid.)
- ___ 98. **N LATTICE AND POINSETTIA FTD. RUFFLED BOWL W/ RIBBED EXT. – DK. MARI. (VERY DESIRABLE PATTERN W/ GREAT COLOR AND IRID.)**
- ___ 99. N Springtime Covered Butter Dish – Dk. Mari. (rare and desirable item w/ great color and irid.)
- 3000 100. **N ROSE SHOW 8 RUFFLED BOWL – ICE GREEN OPAL. (VERY RARE AND EXTREMELY DESIRABLE ITEM; HAS SMALL EXCESSIVE GLASS SPOT ON EDGE)**
- ___ 101. **N ROSE SHOW 8 RUFFLED BOWL – AQUA OPAL. (RARE AND VERY DESIRABLE; NICE OPAL. AND SLIGHT BUTTERSCOTCH OVERLAY)**
- ___ 102. **N ROSE SHOW 8 RUFFLED BOWL – ICE BLUE (RARE AND HAS ATTRACTIVE PASTEL HIGHLIGHTS)**
- 1600 103. **N ROSE SHOW 8 RUFFLED BOWL – LAVENDER (RARE AND UNUSUAL FINISH W/ A PASTEL BASE GLASS)**
- ___ 104. **N POPPY SHOW FLARED PLATE – MARI. (RARE AND DESIRABLE W/ NICE FINISH AND HIGHLIGHTS)**
- 2250 105. **N POPPY SHOW FLAT PLATE – ICE BLUE (VERY RARE AND VERY DESIRABLE; NICE BASE COLOR W/ BRIGHT PASTEL IRID.)**
- ___ 106. **N WISHBONE FTD. RUFFLED BOWL W/ RUFFLES AND RINGS EXT. – HOREHOUND (EXTREMELY RARE BASE COLOR FOR THIS PATTERN; REALLY NICE IRID.)**
- ___ 107. **N WISHBONE FTD. PLATE W/ RUFFLES AND RINGS EXT. – GREEN (VERY RARE BASE COLOR W/ NICE AVERAGE IRID.)**
- ___ 108. N Wishbone Ftd. Plate w/ Ruffles and Rings Ext. – Amyth. (rare and desirable w/ average irid.)
- ___ 109. N Lovely Ftd. Flared Bowl w/ Leaf and Beads Ext. – Amyth. (rare bowl in this pattern; has chip on foot)
- ___ 110. **N LEAF AND BEADS FTD. ROSE BOWL W/ PLAIN EDGE – PEARLIZED CUSTARD (RARE AND DESIRABLE W/ NUTMEG AND NICE PEARLIZED IRID.)**
- ___ 111. N Leaf and Beads Ftd. Rose Bowl – Renninger Blue (rare base color w/ blue highlights)
- ___ 112. **N LEAF AND BEADS FTD. ROSE BOWL – AQUA/ BLUE OPAL. (SUPER EXAMPLE; SUPER PASTEL W/ GREAT IRID.)**
- ___ 113. N Leaf and Beads Ftd. Rose Bowl – Aqua Opal. (rare and desirable; nice opal. and overlay)
- ___ 114. N Leaf and Beads/ Floral Int. Ftd. Flared Plate – Green (extremely rare shape for this item; has chip on one foot)
- 2750 115. **N GREEK KEY FLAT PLATE W/ RIBBED EXT. – DK. MARI. (VERY RARE ITEM; GREAT COLOR AND IRID.; REALLY NICE)**
- ___ 116. N Greek Key Bowl w/ P.C.E. and Basketweave Ext. – Green (scarce shape; satiny w/ a small chip on one point)
- ___ 117. N Beaded Cable Ftd. Ruffled Rose Bowl – Ice Green Opal. (rare pastel w/ an ice green base tint)
- ___ 118. N Beaded Cable Ftd. Ruffled Rose Bowl – Aqua/ Blue Opal. (rare base color; has check in base)

119. N Three Fruits Domed Ruffled Bowl w/ Basketweave Ext. – White (scarce item w/ nice irid.; manuf. flaw on edge) 17,500
- 1000 120. N THREE FRUITS STIPPLED PLATE W/ RIBBED EXT. – LAVENDER (RARE AND DESIRABLE; HAS BRIGHT BLUES AND REDS; REALLY NICE)
- 1200 121. N THREE FRUITS STIPPLED PLATE W/ RIBBED EXT. – VIOLET (RARE BASE COLOR FOR THIS ITEM; NICE COLOR AND IRID.)
122. N Three Fruits Stippled Plate w/ Ribbed Ext. – Honey Amber (rare and desirable pastel example; has 1/8" chip between 2 points)
123. N Three Fruits Stippled Plate w/ Ribbed Ext. – Amyth. (very scarce and desirable item w/ nice irid.)
124. N Three Fruits Stippled 8 Ruffled Bowl w/ Ribbed Ext. – Sapphire (rare and desirable but has chip and missing point)
125. N THREE FRUITS STIPPLED 8 RUFFLED BOWL W/ RIBBED EXT. – BLUE/ ELEC. BLUE (RARE AND DESIRABLE; NICE BLUE HIGHLIGHTS)
126. N THREE FRUITS PLATE W/ BASKETWEAVE EXT. – HOREHOUND (VERY RARE BASE COLOR FOR THIS ITEM; REALLY NICE IRID.)
127. N Fruits and Flowers Stemmed 2 Handled Bon Bon w/ Basketweave Ext. – Aqua Opal. (very desirable w/ super pastel highlights)
128. 7-1/2" N Fruits and Flowers 2 Sided Card Tray w/ Basketweave Ext. – Green (scarce shape w/ satiny finish)
129. 7-1/2" N FRUITS AND FLOWERS 6 RUFFLED BOWL W/ BASKETWEAVE EXT. – ICE GREEN (VERY RARE SIZE AND COLOR FOR THIS ITEM; SUPER)
130. 10" N WILD STRAWBERRY LG. RUFFLED BOWL W/ BASKETWEAVE EXT. – LIME ICE GREEN (VERY RARE AND DESIRABLE COLOR FOR THIS ITEM; NICE)
131. 7" N Wild Strawberry Handgrip Plate w/ Basketweave Ext. – Green (scarce item w/ a satiny finish)
132. N STRAWBERRY STIPPLED RUFFLED BOWL W/ RIBBED EXT. – BLUE/ ELEC. BLUE (RARE AND DESIRABLE ITEM W/ BLUE HIGHLIGHTS)
- 1175 133. N DIAMOND POINT HANDLED BUSHEL BASKET – MARI. (EXTREMELY RARE AND VERY DESIRABLE ITEM; PERFECT AND NICE)
134. N Eight Sided Handled Bushel Basket – Ice Green (very scarce shape; nice color and irid.)
135. N Eight Sided Handled Bushel Basket – Ice Blue (very scarce shape; nice light base color and irid.)
136. N Round Handled Bushel Basket – Aqua Opal. (very scarce and desirable; nice opal. and overlay)
137. N ROUND HANDLED BUSHEL BASKET – ELEC. BLUE (ABSOLUTELY SUPER EXAMPLE; HAS BRIGHT BLUE IRID.)
138. N ROUND HANDLED BUSHEL BASKET – DK. MARI. (ANOTHER OF THE BETTER EXAMPLES YOU'LL EVER SEE)
- 1500 139. 6" N "E.A. HUDSON" FLAT PLATE W/ BASKETWEAVE EXT. – AMYTH. (RARE AND DESIRABLE; GREAT COLOR AND IRID.; NICE)
- 1150 140. 6" N "EAGLE FURNITURE" 2 SIDED HANDGRIP W/ BASKETWEAVE EXT. – AMYTH. (RARE AND DESIRABLE; NICE COLOR AND IRID.; NICE)
- 1250 141. N "DREIBUS PARFAIT SWEETS" FLAT PLATE – AMYTH. (RARE AND DESIRABLE; GREAT COLOR AND IRID.)
142. N "DREIBUS PARFAIT SWEETS" 2 SIDED HANDGRIP PLATE – AMYTH. (RARE AND DESIRABLE; NICE COLOR AND IRID.)
143. FENTON 1910 DETROIT ELKS 6 RUFFLED BOWL – AMYTH. (RARE AND DESIRABLE; HAS A NICE SATINY IRID.)
- 1500 144. MILLERSBURG ELKS PAPERWEIGHT – AMYTH. (VERY RARE AND DESIRABLE ITEM; GREAT DETAIL; SMALL CHIP ON BASE)
145. FENTON 1910 DETROIT ELKS FLAT PLATE – GREEN (EXTREMELY RARE ITEM IN OUR HOBBY; ONLY PERFECT EXAMPLE KNOWN)
- 2200 146. FENTON 1911 ELKS ATLANTIC CITY HANDLED BELL – BLUE (RARE AND VERY DESIRABLE; NICE COLOR, DETAIL AND IRID.)
- 1300 147. FENTON 1911 ELKS ATLANTIC CITY FLAT PLATE – BLUE (RARE AND DESIRABLE; NICE DETAIL AND COLOR)
148. 6" FENTON "BRAIZERS CANDIES"/ GARDEN MUMS FLAT PLATE – AMYTH. (RARE AND VERY DESIRABLE; GREAT DETAIL W/ A SATINY FINISH)
- 1200 149. 6" FENTON "OGDEN FURNITURE AND CARPET CO.; OGDEN UTAH"/ GARDEN MUMS FLAT PLATE – AMYTH. (RARE ITEM IN THIS SHAPE; HAS A SATINY FINISH)
- 2750 150. 6" FENTON "ROOD'S CHOCOLATES - PUEBLO" FLAT PLATE – AMYTH. (ABSOLUTELY FANTASTIC AND SOOOO RARE; A REAL BEAUT THAT WOULD BE IMPOSSIBLE TO DUPLICATE)
- 2100 151. 6" FENTON "GEVURTZ BROS. FURNITURE AND CLOTHING" FLAT PLATE – AMYTH. (ANOTHER FANTASTIC ITEM W/ GREAT COLOR AND IRID.; VERY RARE)
- 1000 152. 6" FENTON "COMPLIMENTS OF THE CENTRAL SHOE STORE - EAST ST. LOUIS, ILL. "/ GARDEN MUMS FLAT PLATE – AMYTH. (VERY RARE AND DESIRABLE ITEM; GREAT DETAIL; NOT MANY AROUND)
- 1500 153. 6" FENTON "UTAH LIQUOR STORE - LEWIS 66 RYE"/ GARDEN MUMS FLAT PLATE – AMYTH. (RARE AND DESIRABLE; NICE SATINY DETAIL)
154. 6" FENTON "SEASONS GREETINGS - EAT PARADISE SODA" FLAT PLATE – AMYTH. (VERY SCARCE; NICE DETAIL AND IRID.)
- 2750 155. 9-9-1/2" FENTON "1911 - BIRMINGHAM AGE HERALD - CARRIERS GREETINGS" FLAT PLATE AMYTH. (HAS TO BE ONE OF THE VERY FINEST EXAMPLES KNOWN...PERIOD!)
- 3000 156. 6" FENTON "EXCHANGE BANK, GLENDIVE, MONT"/ GARDEN MUMS FLAT PLATE – AMYTH. (RARE AND VERY DESIRABLE; SUPER SATINY FINISH)
- 2000 157. 6" N "WE USE BROEKERS FLOUR" FLAT PLATE – AMYTH. (RARE AND VERY DESIRABLE; HAS BRIGHT YELLOW HIGHLIGHTS)
158. 6" N "BALLARD - MERCED, CA" FLAT PLATE – AMYTH. (RARE AND VERY DESIRABLE; NICE MULTI-COLORED IRID.)
159. 6" N "FERN BRAND CHOCOLATES" FLAT PLATE – AMYTH. (RARE AND DESIRABLE; HAS GREAT MULTI-COLORED IRID.)
160. 6" N "EAGLE FURNITURE CO." FLAT PLATE – AMYTH. (ANOTHER RARE N'WOOD ITEM; NICE BRIGHT IRID.)
161. 6" N "DREIBUS PARFAIT SWEETS" FLAT PLATE – AMYTH. (ANOTHER BEAUTIFUL EXAMPLE OF N'WOOD'S ADVERTISING)
- 5500 162. 6" M'BURG "GREENGARD FURNITURE CO., MICH. AVE. ROSELAND, ILL." 2 SIDED CARD TRAY – AMYTH. (EXTREMELY RARE ITEM; ONLY 5 KNOWN EXAMPLES IN ANY SHAPE)
163. 6" M'burg "The Great House of Isaac Benesch" Ruffled Bowl – Amyth. (scarce w/ nice color and irid.)
164. M'burg Swirl Hobnail Rose Bowl – Amyth. (very scarce; has nice radium type irid.)
165. M'BURG SWIRL HOBNAIL SPITTOON – MARI. (VERY RARE AND DESIRABLE; HAS ODD PINCH TO THE TOP)



Lot #100



Lot #115



Lot #63



Lot #212



Lot #215



Lot #10



Lot #180



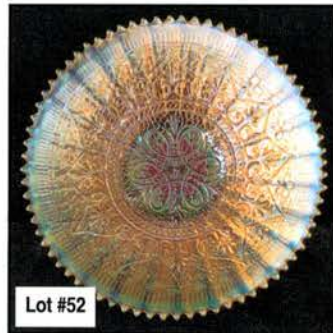
Lot #199



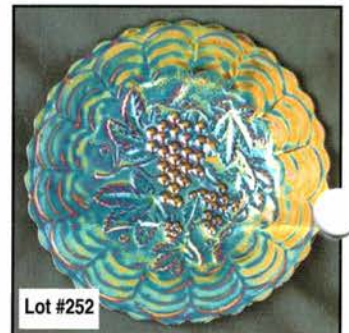
Lot #271



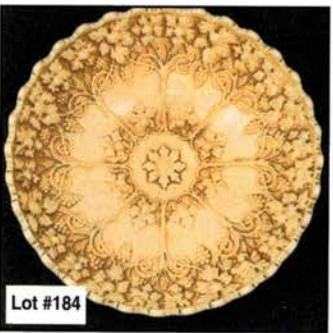
Lot #106



Lot #52



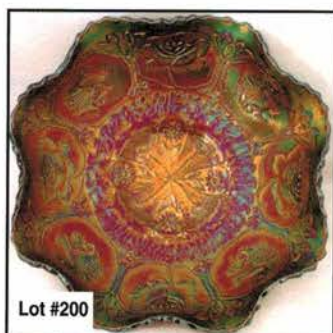
Lot #252



Lot #184



Lot #53



Lot #200



Lot #105



Lot #32



Lot #210



Lot #225



Lot #21

Lot #24



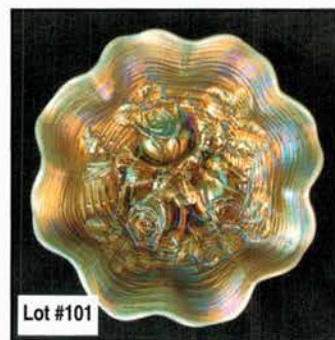
Lot #211



Lot #51



Lot #345



Lot #101



Lot #185



Lot #175



Lot #350



Lot #213



Lot #246



Lot #235



Lot #60



Lot #296



Lot #103



Lot #170



Lot #95



Lot #70



Lot #220

Lot #23

Lot #22



Lot #228

Lot #31



Lot #305



Lot #40

166. 10" M'BURG PEACOCK AT THE URN LG. ICE CREAM BOWL – GREEN (RADIUM; HAS NO BEE AND NO BEADING; SUPER IRID.)
167. Dugan Honeycomb Rose Bowl – P. Opal. (scarce; nice opal. and overlay)
168. 10" Dugan Garden Path Variant Ice Cream Bowl – White (rare item in this shape; super irid.)
169. 6" Dugan Garden Path Variant Flat Plate w/ Soda Gold Ext. – White (very rare little item; nice irid.; some of the edge not filled in)
- 1575 170. 6" DUGAN PERSIAN GARDEN FLAT PLATE – AMYTH. (A REAL BEAUTY; PERFECT; W/ BRIGHT IRID.; A REAL KEEPER)
171. 13" DUGAN PERSIAN GARDEN LG. ICE CREAM BOWL – P. OPAL. (VERY RARE AND VERY DESIRABLE; SUPER OPAL., SUPER SHAPE AND SUPER IRID.)
172. 10" Dugan Wishbone and Spades Ruffled 2 Sided Banana Boat – P. Opal. (very scarce item in this shape; nice opal. and overlay)
173. N Peacock at the Fountain Handled Water Pitcher – Amyth. (scarce and very desirable; nice multi-colored irid.)
174. 9" Peacocks Plate w/ Plain Ext. – White (very scarce; pretty well frosty w/ nice irid.)
- 1200 175. 10" N PEACOCK AT THE URN LG. ICE CREAM BOWL – ELEC. BLUE (ALWAYS RARE AND DESIRABLE AND THIS ONE IS NO EXCEPTION; BEAUTIFUL BASE GLASS AND BRIGHT HIGHLIGHTS; SUPER)
176. 10" N PEACOCK AT THE URN LG. ICE CREAM BOWL – ICE GREEN (RARE AND VERY DESIRABLE; GREAT BASE COLOR AND IRID.)
177. 10" N Peacock at the Urn Lg. Ruffled Bowl – Mari. (rare variation when ruffled; really nice example)
178. N CORN VASE W/ STALK BASE – GREEN (GETTIN' TOUGH TO FIND AND THIS IS ONE FINE EXAMPLE)
179. (6) N G & C Handled Punch Cups – White (scarce items; average color and irid.; selling so much each for set)
180. 10" N G & C LG. ICE CREAM BOWL W/ BASKETWEAVE EXT. – ELEC. BLUE (ACTUALLY QUITE A RARE ITEM IN THIS COLOR; AND THIS ONE IS NICE)
181. 10" N G & C LARGE ICE CREAM BOWL W/ BASKETWEAVE EXT. – GREEN (ANOTHER RARE COLOR FOR THIS ITEM; NICE SATINY FINISH)
182. N DANDELION HANDLED MUG – AQUA OPAL. (RARE AND ALWAYS DESIRABLE; NICE OPAL.)
183. 10" N Wishbone Chop Plate w/ Basketweave Ext. – Amyth. (rare and desirable satiny example; has chip on one point)
184. 10-1/2" N GRAPE FRIEZE LG. ICE CREAM SHAPED FTD. BOWL – PEARLIZED CUSTARD (RARE AND VERY DESIRABLE ITEM W/ GREAT NUTMEG DECORATION)
185. N ROSE SHOW VARIANT FLAT PLATE W/ RIBBED EXT. – MARI. (EXCELLENT EXAMPLE; NICE AND EVEN ALL OVER; QUITE RARE)
186. 9" N ROSE SHOW FLARED PLATE – AMYTH. (RARE AND VERY DESIRABLE; PERFECT; W/ MULTI-COLORED IRID.)
187. 7" N Fruit and Flowers Stippled 6 Ruffled Bowl w/ Basketweave Ext. – Green (a rare N'wood item w/ bright irid.; a tough combination)
188. N Three Fruits Medallion Stippled Ftd. Ruffled Bowl w/ Meander Ext. – Aqua Opal. (rare and desirable w/ nice pastel highlights)
189. N STRAWBERRY STIPPLED BOWL W/ P.C.E. AND RIBBED EXT. – ELEC. BLUE (A REAL TOUGHIE; RARE PATTERN, SHAPE AND COLOR)
190. 9" N Three Fruits Stippled Plate w/ Ribbed Ext. – Amyth. (very scarce; nice color and bright irid.)
191. 9" N Three Fruits Stippled Plate w/ Ribbed Ext. – Mari. (really nice example; strong color and irid.)
192. 8-1/2" N Three Fruits Stippled Ruffled Bowl w/ Ribbed Ext. – Dk. Mari. (very scarce and very desirable; super color and irid.)
193. FENTON PRAYER RUG 2 HANDLED BON BON – MARI./ CUSTARD (RARE ITEM W/ A VERY NICE MARIGOLD OVERLAY)
194. Fenton Stag and Holly Ftd. Giant Rose Bowl – Mari. (scarce; nice detail and satiny finish)
195. 10" FENTON ROSE TREE LG. ICE CREAM BOWL – MARI. (EXTREMELY RARE PATTERN IN THIS SHAPE, IN THIS COLOR; NICE IRID. THAT GETS LIGHT IN THE CENTER)
196. Fenton Panther Lg. Ftd. Centerpiece Bowl – Lt. Mari. (rare shape for this pattern; has light irid.)
197. Fenton Captive Rose Stemmed Compote w/ 3 in 1 Edge – White (scarce; frosty w/ a nice shape)
198. 9" Fenton Holly Flat Plate – Blue (scarce; has nice satiny finish)
- 1400 199. 9" FENTON DRAGON AND LOTUS FLAT PLATE – MARI. (VERY RARE AND DESIRABLE; NICE ODD SATINY FINISH)
- 1400 200. 9" FENTON DRAGON AND LOTUS 8 RUFFLED BOWL – RED (VERY RARE AND VERY DESIRABLE; GREAT COLOR W/ BRIGHT SATINY IRID.)
201. 7" FENTON COIN DOT DEEP ICE CREAM SHAPED BOWL – RED (VERY RARE W/ BRIGHT COLOR AND IRID.; REALLY NICE)
202. FENTON HOLLY 6 RUFFLED HAT – RED (RARE W/ NICE DARK SATINY IRID.)
203. 10" FENTON CHRYSANTHEMUM FTD. ICE CREAM SHAPED BOWL – RED/ OXBLOOD (SUPER RARE; ABOUT AS RED AS RED CAN GET!)
204. U.S. GLASS NOVELTY COVERED FROG CANDY DISH – ICE GREEN (RARE NOVELTY; PERFECT W/ GREAT IRID. AND DECOR.)
- 2100 205. 9" FENTON DRAGON AND LOTUS 8 RUFFLED BOWL – AQUA OPAL. (VERY RARE AND VERY DESIRABLE; OPAL. ON EDGE W/ SATINY IRID.; A SUPER EXAMPLE)
206. Fenton Orange Tree Standard Flared Handled Mug – Red (nice dark base color; light irid.)
207. 9" Fenton Feather Stitch 8 Ruffled Bowl – Amyth. (very scarce color for this pattern)
208. EGYPTIAN SCARAB HATPIN (FULL SIZED BEETLE) – DARK (EXTREMELY RARE ITEM; A BIG BUG W/ GREAT IRID.)
209. FENTON FUCHSIA 2 HANDLED STEMMED BON BON – BLUE (EXTREMELY RARE PATTERN; NICE SATINY FINISH)
- 8200 210. FENTON MIKADO LG. RUFFLED STEMMED COMPOTE – EMERALD GREEN (ABSOLUTELY FANTASTIC; PROBABLY THE BEST PIECE OF FENTON GREEN I'VE SEEN!)
- 3600 211. 10-10-1/2" FENTON LOTUS AND POINSETTIA 3 FTD. FLAT CHOP PLATE – DK. MARI. (AN EXTREMELY RARE FENTON ITEM; ONLY A FEW KNOWN; GREAT IRID.)
- 1000 212. 12" FENTON TWO FLOWERS BALL FTD. CHOP PLATE – DK. MARI. (ABSOLUTELY BEAUTIFUL; HAS A SMALL CHIP ON THE COLLAR BASE)
- 1250 213. 9-9-1/2" FENTON LEAF CHAIN FLAT PLATE – BLUE (RARE AND DESIRABLE; HAS BRIGHT IRID. AND STRETCH EFFECT)
214. 10-1/2" FENTON STAG AND HOLLY LG. BALL FTD. ICE CREAM BOWL – BLACK AMYTH. (VERY RARE BASE COLOR FOR THIS ITEM; HAS SATINY FINISH)
- 2750 215. 9-1/4" FENTON VINTAGE GRAPE FLAT PLATE – BLUE (VERY RARE AND VERY DESIRABLE; HAS BRIGHT IRID.; REALLY FLAT; SUPER)

- _____ 216. 9" N Peacocks Plate w/ Ribbed Ext. – Purp. (rare and desirable; nice bright irid.; nice)
- _____ 217. N Corn Vase w/ Plain Base – Ice Green (very scarce; especially tough without the stalk base)
- _____ 218. 10-1/4" Tall Dugan Spiralx Swung Vase – Sapphire (very rare base color for this item; nice)
- _____ 219. **12" TALL X 4-3/4" BASE N TREE TRUNK MID-SIZE SWUNG VASE – GREEN (AN IMPRESSIVE ITEM W/ BRIGHT IRID. AND A SLIGHT MARI. OVERLAY)**
- 2200 _____ 220. **10" TALL N TREE TRUNK STANDARD SWUNG VASE – ELEC BLUE (ALL I CAN SAY IS THIS HAS TO BE THE BEST I'VE SEEN...PERIOD!)**
- _____ 221. **N HEARTS AND FLOWERS STEMMED RUFFLED COMPOTE W/ RIBBED EXT. – ELEC. BLUE (ABSOLUTELY BEAUTIFUL! SUPER ITEM)**
- _____ 222. Dugan Strawberry 2 Pc. Epergne w/ Fishnet Lily – Amyth. (rare item; satiny w/ a Fishnet Lily...optional)
- _____ 223. 9" Dugan Windflower Flat Plate – Blue (very scarce; has nice satiny irid.)
- _____ 224. 9" Dugan Windflower Flat Plate – Mari. (has a nice satiny finish)
- 2500 _____ 225. **DUGAN CHRISTMAS COMPOTE – PURP. (RARE AND VERY DESIRABLE; HAS A MULTI-COLORED SATINY FINISH)**
- _____ 226. **10-11" DUGAN SKI STAR LG. 6 RUFFLED BOWL W/ COMPASS EXT. – PURP. (ABSOLUTELY BEAUTIFUL; BRIGHT IRID. FRONT AND BACK)**
- _____ 227. 6" Dugan Petal and Fan Crimped Edge Plate w/ J.H. Ext. – Purp. (super color and irid. for this item; really nice)
- _____ 228. **DUGAN FORMAL HATPIN HOLDER – PURP. (RARE AND DESIRABLE W/ BRIGHT MULTI-COLORED IRID.)**
- _____ 229. 7" Tall Dugan Circle Scroll Swung Vase – Purple (quite rare anymore and this one is a beaut!!)
- _____ 230. **DUGAN FISHERMAN'S HANDLED MUG – P. OPAL. (EXTREMELY RARE ITEM; HAVEN'T SOLD ONE OF THESE IN A WHILE)**
- _____ 231. **DUGAN DAISY WEB 6 RUFFLED HAT – MARI. (RARE AND DESIRABLE PATTERN; BRIGHT HIGHLIGHTS)**
- _____ 232. 9" Dugan Fanciful Flared Plate – White (scarce; frosty w/ great irid.)
- _____ 233. 9" Dugan Double Stem Rose Domed Plate – White (scarce shape; nice and frosty)
- _____ 234. 8-1/2" Dugan Apple Blossom Twigs Ice Cream Shaped Bowl – White (scarce; great color and irid.)
- 6500 _____ 235. **(MAKER?) ELEGANCE FLAT PLATE – DK. MARI. (EXTREMELY RARE AND VERY DESIRABLE; HAS BRILLIANT IRID.; WOW!)**
- _____ 236. 10" Australian Thunderbird 12 Ruffled Bowl – Black Amyth. (very scarce w/ nice irid.)
- _____ 237. **10" DUGAN COSMOS VARIANT LG. 6 RUFFLED BOWL – AMBERINA W/ RED STREAKS (A VERY RARE COLOR COMBINATION; SUPER RARE)**
- _____ 238. European "Towers" 6 Ruffled Hat/ Vase – Blue (very rare color for this item; irid. is silvery)
- _____ 239. European "Sunflower and Diamonds" Variant Vase (different mold) – Mari. (a completely different shape to this pattern that I have not seen before; great color and irid.)
- 8000 _____ 240. **9" FENTON J. N. LEDFORD "SOUVENIR OF COOLEEMEE, N.C." HEART AND VINE PLATE – DK. MARI. (EXTREMELY RARE FENTON ADVERTISING ITEM; GREAT COLOR AND GREAT SATINY FINISH; A RARE OPPORTUNITY TO OBTAIN THIS ITEM)**
- _____ 241. **WESTMORELAND CRUCIFIX CANDLESTICK – DK. MARI. (RARE W/ GREAT COLOR AND IRID.; A BIT LIGHTER ON BASE)**
- _____ 242. Imperial Hobstar Covered Butter Dish – Purp. (rare color w/ great irid.; has flake on finial)
- _____ 243. 5" Imperial Heavy Grape Ind. Berry Bowl – Purp. (scarce item; super irid.)
- _____ 244. 7" Imperial Heavy Grape 8 Ruffled Bowl – Purp. (super irid.; really attractive)
- 1600 _____ 245. **10-11" IMPERIAL HEAVY GRAPE CHOP PLATE – WHITE (VERY RARE AND VERY DESIRABLE; SUPER STRETCH EFFECT)**
- _____ 246. **10-11" IMPERIAL HEAVY GRAPE CHOP PLATE – PURP. (RARE AND VERY DESIRABLE; SUPER IRID.)**
- _____ 247. 10-1/4" Imperial Heavy Grape Lg. 8 Ruffled Bowl – Purp. (very scarce item; has great irid.)
- _____ 248. 9-1/2" Imperial Acanthus Chop Plate – Smoke (rare and desirable; super blue irid.)
- _____ 249. 9-1/2" Imperial Acanthus Chop Plate – Mari. (very scarce and has super irid.)
- _____ 250. **IMPERIAL GRAPE 10 PC. PUNCH SET – AMBER (EXTREMELY RARE SET IN THIS COLOR; COMPLETE AND NICE)**
- _____ 251. Imperial Grape Wine Decanter and Stopper – Purp. (scarce w/ super irid.)
- 2000 _____ 252. **9" IMPERIAL GRAPE FLAT PLATE – PURP. (VERY RARE AND VERY DESIRABLE; SUPER BRIGHT IRID. AND PERFECT; NICE!)**
- _____ 253. 10" Imperial Grape Lg. 8 Ruffled Bowl – Purp. (very scarce w/ super irid.; nice)
- _____ 254. Imperial Windmill Oval Relish Tray – Purp. (a super, super example; bright and nice)
- 1400 _____ 255. **IMPERIAL BROKEN ARCHES 8 PC. PUNCH SET – PURP. (RARE AND DESIRABLE; GREAT MULTI-COLORED IRID.)**
- _____ 255A. Imperial Broken Arches Handled Punch Cup – Purp. (super irid.)
- _____ 256. **IMPERIAL FLORAL AND OPTIC FTD. FLARED BOWL – PURP. (RARE ITEM IN THIS COLOR; NOT MANY KNOWN)**
- _____ 257. 9" Imperial Embossed Scroll Flat Plate – Purp. (rare and very desirable; has bright irid.)
- _____ 258. 9" Imperial Open Rose Flat Plate – Purp. (rare; has odd satiny finish; some chips on roses)
- _____ 259. 10-1/2" Imperial Open Rose Lg. Round Bowl – Purp. (very scarce; nice bright irid.)
- _____ 260. **IMPERIAL LOGANBERRY VASE – AMBER (RARE AND VERY TOUGH TO FIND; A SUPER EXAMPLE)**
- _____ 261. Imperial Homestead Nu Art Chop Plate – Amber (great irid.; it looks purple; has large chip on base)
- _____ 262. Imperial Fashion Ruffled Punch Top Only – Amber w/ Slag (only seen 2 or 3 of these; rare color; slight roughness on top)
- _____ 263. Imperial Lustre Rose Ftd. Ruffled Fruit Bowl – Purp. (rare and very desirable; super color and irid.)
- _____ 264. 8-1/2" Imperial Sand and Shell Ruffled Bowl – Purp. (scarce; has great color and super irid.)
- _____ 265. 9-1/2" Imperial Hattie 10 Ruffled Bowl – Purp. (very scarce w/ super color and irid.; nice)
- _____ 266. 8-1/2" Fenton Orange Tree Ice Cream Shaped Bowl – Blue (nice color w/ bright highlights)
- _____ 267. N G & C Stippled Variant 8 Ruffled Bowl w/ Ribbed Ext. – Purp. (very scarce and desirable; has super irid.)
- _____ 268. N Wishbone Ftd. Tri-Cornered Bowl w/ Ruffles and Rings Ext. – Amyth. (rare shape for this item; satiny finish)
- _____ 269. 9-1/2" M'burg Fleur de Lis Lg. 6 Ruffled Bowl – Amyth. (radium and very desirable; really nice)
- _____ 270. **CAMBRIDGE INVERTED STRAWBERRY SPITTOON – MARI. (RARE AND VERY DESIRABLE; NICE COLOR AND IRID.; REALLY NICE)**
- _____ 271. **M'BURG HOBNAIL SPITTOON – MARI. (RARE AND DESIRABLE; NICE COLOR AND IRID.; MAY HAVE SLIGHT ROUGHNESS ON SOME HOBS)**

- _____ 272. M'burg Hobnail Rose Bowl – Amyth. (very scarce; nice color and bright irid.)
- _____ 273. 9-1/2" M'burg Nesting Swan 6 Ruffled Bowl – Amyth. (radium and very attractive; nice irid.)
- _____ 274. 9-1/2" M'burg Nesting Swan 6 Ruffled Bowl – Green (another attractive radium example; super irid.)
- 3250 275. **M'BURG ACORN STEMMED 6 RUFFLED COMPOTE – AMYTH. (A VERY RARE AND EXTREMELY DIFFICULT ITEM TO LOCATE; RADIUM AND PERFECT)**
- 1350 276. **M'BURG DEEP GRAPE STEMMED 4 SIDED SQUARE COMPOTE – AMYTH. (A SATINY EXAMPLE IN THIS RARE SHAPE; TOUGH TO FIND)**
- 1450 277. **M'BURG DEEP GRAPE ROUND FLARED STEMMED COMPOTE – GREEN (ANOTHER EXAMPLE OF THIS RARE PATTERN; GREAT SHAPE AND SATINY FINISH)**
- 1500 278. **M'BURG HANGING CHERRIES ROUND STEMMED COMPOTE – AMYTH. (EXCELLENT EXAMPLE OF THIS RARE ITEM; HAS A BRIGHT FINISH; VERY NICE)**
- 1100 279. **M'BURG HANGING CHERRIES ROUND STEMMED COMPOTE – GREEN (RARE COLOR FOR THIS PATTERN; HAS A LIGHTER IRID., BUT GO FIND ONE)**
- 1000 280. **M'BURG HOLLY SPRIG 6 RUFFLED CRIMPED EDGE STEMMED COMPOTE – AMYTH. (VERY RARE AND VERY TOUGH; RADIUM W/ A RARE SHAPE)**
- 1000 281. **M'BURG PEACOCK AT THE URN GIANT 6 RUFFLED STEMMED COMPOTE – MARI. (VERY RARE COLOR FOR THIS PATTERN; SATINY AND PERFECT)**
- _____ 282. **M'BURG LEAF AND LITTLE FLOWERS MINIATURE RUFFLED COMPOTE – AMYTH. (RADIUM AND VERY SCARCE; GREAT IRID. AND NICE)**
- _____ 283. M'burg Leaf and Little Flowers Miniature Flared Compote – Green (a very scarce satiny item; great color and detail)
- _____ 284. M'burg Leaf and Little Flowers Miniature Flared Compote – Mari. (a very scarce item w/ a bright satiny finish)
- _____ 285. **M'BURG STRAWBERRY WREATH STEMMED 6 RUFFLED COMPOTE – GREEN (RADIUM AND VERY DESIRABLE; REALLY ATTRACTIVE)**
- _____ 286. **M'BURG STRAWBERRY WREATH STEMMED 6 RUFFLED COMPOTE – LAVENDER (ODD LIGHTER SHADE W/ A SUPER RADIUM LOOK)**
- _____ 287. M'burg Strawberry Wreath Stemmed 6 Ruffled Compote – Amyth. (radium and very attractive; has nice bright irid.)
- _____ 288. M'burg Strawberry Wreath Stemmed 6 Ruffled Compote – Mari. (rare color; radium and very attractive)
- _____ 289. 5-1/2" x 6" M'burg Holly Sprig 4 Sided Square Turned Down Corner Square Bowl – Mari. (very rare shape; pulled down on all 4 corners; has some small chips)
- 1250 290. **M'BURG HOBSTAR AND FEATHER GIANT ROSE BOWL – PURP. (RARE AND VERY ATTRACTIVE; HAS NO GOLD HIGHLIGHTS; HAS SMALL CHIP ON BOTTOM OF ONE POINT)**
- 1500 291. **M'BURG HOBSTAR AND FEATHER GIANT ROSE BOWL – GREEN (RARE AND DESIRABLE; HAS A SATINY FINISH)**
- _____ 292. **M'BURG MULTI-FRUITS AND FLOWERS 10 PC. FLARED PUNCH SET – MARI. (RARE COMPLETE SET; SATINY FINISH AND NICE; HAS A STAINED AREA ON TOP)**
- _____ 293. **M'BURG ZIG ZAG TRI-CORNERED CRIMPED EDGE BOWL – GREEN (RARE SHAPE AND A RARE COLOR; NICE AND RADIUM)**
- _____ 294. 9-1/2" M'burg Zig Zag Ice Cream Shaped Bowl – Amyth. (rare and very attractive; radium and desirable)
- 2150 295. **M'BURG PERFECTION FLARED HANDLED WATER PITCHER – AMYTH. (VERY RARE AND VERY DESIRABLE; PERFECT W/ GOLDISH HIGHLIGHTS)**
- 1300 296. **M'BURG SEACOAST PIN TRAY – MARI. (RARE COLOR; PERFECT W/ GREAT DETAIL AND IRID.)**
- 1300 297. **9-1/2" M'BURG TROUT AND FLY 6 RUFFLED BOWL – LAVENDER (A SUPER EXAMPLE; NICE LIGHT BASE COLOR W/ SUPER BRIGHT SATINY FINISH)**
- _____ 298. **8-1/2" M'BURG BIG FISH RUFFLED CRIMPED EDGE BOWL – MARI. (RADIUM AND VERY RARE; GREAT COLOR AND DETAIL)**
- _____ 299. **M'BURG ROSES AND FRUIT 2 HANDLED STEMMED BON BON – MARI. (RARE AND RADIUM; A VERY TOUGH ITEM TO FIND)**
- _____ 300. **6" TALL M'BURG ROSELAND STEMMED 6 RUFFLED COMPOTE – GREEN (RARE AND DESIRABLE; AN UNDERPRICED SATINY RARITY; NICE)**
- 1400 301. **9-1/2" M'BURG HANGING CHERRIES 6 RUFFLED BOWL W/ HOBNAIL EXT. – MARI. (RARE AND DESIRABLE ITEM W/ AN EXCELLENT SATINY FINISH)**
- _____ 302. 9-1/2" M'burg Many Stars Ruffled Crimped Edge Bowl – Mari. (scarce and desirable pattern in a scarce color)
- _____ 303. **9" M'BURG SEAWEED RUFFLED CRIMPED EDGE BOWL – MARI. (RARE SIZE FOR THIS PATTERN; SATINY)**
- _____ 304. 6" M'burg "The Great House of Isaac Benesch" 6 Ruffled Advertising Bowl – Amyth. (very scarce advert. item; nice detail)
- 1600 305. **M'BURG WILD ROSE STANDARD KEROSENE LAMP W/ 6-1/4" BASE – GREEN (RARE AND VERY DESIRABLE; I LOVE THESE PIECES)**
- _____ 306. **M'BURG LETTERED COURTHOUSE 6 RUFFLED BOWL – AMYTH. (RADIUM W/ EXCELLENT DETAIL AND IRID.; REALLY NICE)**
- _____ 307. **9-1/2" M'BURG GRAPE LEAVES LG. 6 RUFFLED BOWL – AMYTH. (RARE PATTERN W/ A SUPER RADIUM FINISH)**
- _____ 308. M'burg Fleur de Lis Domed Ftd. Round Bowl – Amyth. (rare and radium; great color and super irid.)
- _____ 309. M'burg Fleur de Lis Domed Ftd. Tri-Cornered Crimped Edge Bowl – Mari. (rare shape w/ nice radium finish)
- 2400 310. **6" M'BURG BLACKBERRY WREATH 3 IN 1 CRIMPED FLAT PLATE – GREEN (TALK ABOUT RARE! AN ODD SHAPE AND FLAT; A DEFINITE WHIMSEY ITEM)**
- _____ 311. 7" M'burg Blackberry Wreath Bowl w/ Crimped Edge – Amyth. (scarce; nice color)
- _____ 312. 8-1/2" M'burg Blackberry Wreath Ice Cream Shaped Bowl – Amyth. (satiny; nice irid.)
- _____ 313. 6-6-1/2" M'burg Blackberry Wreath Low Tight Crimped Sauce – Mari. (almost wants to be a plate; a really cute shape)
- _____ 314. 6-1/2" M'burg Blackberry Wreath Ice Cream Shaped Sauce – Mari. (radium and nice)
- _____ 315. **8-1/2" M'BURG GRAPE WREATH VARIANT SQUARE CRIMPED EDGE BOWL – MARI. (RADIUM W/ SUPER IRID.; VERY ATTRACTIVE)**
- _____ 316. 7" M'burg Holly Sprig Tri-Cornered Bowl – Green (radium and very desirable; super irid.)
- _____ 317. 8" M'burg Grape Wreath 6 Ruffled Crimped Edge Bowl – Amyth. (radium and very attractive)
- _____ 318. 8" M'burg Strawberry Wreath Crimped Edge Bowl – Amyth. (radium and nice)
- _____ 319. **8-1/2" M'BURG PEACOCK AT THE URN ICE CREAM SHAPED BOWL – AMYTH. (THE SO CALLED "MYSTERY" BOWL; RADIUM AND RARE)**
- 1200 320. **6" M'BURG PEACOCK AT THE URN 6 RUFFLED SAUCE – BLUE (RARE AND VERY DESIRABLE COLOR; NICE BLUE W/ AN OVERLAY)**
- _____ 321. **6" M'BURG PEACOCK IND. ICE CREAM BOWL – GREEN (VERY DESIRABLE ITEM W/ EXCELLENT IRID.)**

- _____ 322. 6" M'burg Peacock Ind. Ruffled Sauce – Amyth. (radium and nice; super irid.)
- _____ 323. 6" M'burg Peacock Ind. Ruffled Sauce – Mari. (another radium example in a scarce color)
- _____ 324. (2) M'burg Peacock Ind. Flared Berry Bowls – Amyth. (radium and nice; selling choice)
- 1700 325. **9" M'BURG PEACOCK LG. DEEP ROUND "PROOF" BOWL – GREEN (RARE DEEP ROUND SHAPE; RADIUM FINISH; REALLY NICE)**
- _____ 326. **10" M'BURG PEACOCK LG. ICE CREAM BOWL – AMYTH. (RADIUM AND RARE; NO BEE AND NO BEADING)**
- _____ 327. 9-1/2" M'burg Peacock Lg. Flared Master Berry Bowl – Amyth. (radium and nice; gets a bit lighter near edge)
- _____ 328. 9-1/2" M'burg Peacock Lg. Flared Master Berry Bowl – Mari. (Radium and a bit tougher in this color)
- 1750 329. **M'BURG MORNING GLORY TUMBLER – AMYTH. (SAVING THE BEST FOR LAST; RADIUM AND VERY RARE)**
- 4500 330. **21-1/2" TALL X 5-1/4" BASE X 8" FLARE FENTON DIAMOND RIB SWUNG FUNERAL VASE – BLUE (RARE AND EXTREMELY DESIRABLE; PERFECT; W/ SUPER BRIGHT HIGHLIGHTS)**
- _____ 331. **18" TALL X 5-1/4" BASE X 9" FLARE FENTON DIAMOND RIB SWUNG FUNERAL VASE – GREEN (ANOTHER RARE ITEM; HAS A NICE SATINY FINISH; HAS A SMALL PULLED POINT FLAKE)**
- _____ 332. **19" TALL X 5-1/4" BASE X 7" FLARE FENTON RUSTIC SWUNG FUNERAL VASE – BLUE (VERY SCARCE; HAS NICE COLOR AND REALLY NICE IRID.)**
- _____ 333. 20" Tall x 5-1/4" Base x 7-1/2" Flare Fenton Rustic Swung Funeral Vase – Mari. (another scarce item w/ a super satiny finish)
- _____ 334. 16-1/2" Tall x 4-3/4" Base x 5-1/2" Flare Fenton Stretch Interior Ripple Mid-Size Swung Vase – Ice Blue (rare and desirable stretch item; a nice pastel example)
- 1500 335. **10-1/2" TALL FENTON PLUME PANELS SWUNG VASE – RED (RED AND RARE; A VERY ATTRACTIVE EXAMPLE)**
- _____ 336. 9" Fenton Persian Medallion 8 Ruffled Bowl – Red (a terribly rare item; dark satiny w/ a couple small chips)
- _____ 337. **FENTON HOLLY STEMMED 6 RUFFLED COMPOTE – RED (VERY DESIRABLE ITEM THAT LOOKS RED!)**
- _____ 338. Fenton 2 Row Open Edge Turned In Rose Bowl – Red (rare and unusual item; another we will talk about)
- _____ 339. Fenton Persian Medallion 4 Sided 2 Handled Bon Bon – Amberina (now this is amberina; actually quite rare)
- _____ 340. **6" FENTON LOTUS AND POINSETTIA FTD. RUFFLED SAUCE – REVERSE AMBERIAN OPAL. (AS ALWAYS, ONE OF MY FAVORITE ITEMS; SUPER COLOR)**
- _____ 341. 6" Fenton Lotus and Poinsettia Ftd. Ruffled Sauce – Green (scarce; has a nice bright green color)
- _____ 342. 6" Fenton Lotus and Poinsettia Ftd. Ruffled Sauce – Mari./ Vaseline (scarce; nice base color)
- _____ 343. 10" Fenton Vintage Grape Lg. 8 Ruffled Bowl – Dk. Mari./ Vaseline (unusual color for this item; has a dark satiny finish)
- _____ 344. Fenton Bouquet 6 Pc. Bulbous Water Set – Blue (very scarce set; pitcher is nice)
- 2100 345. **7-1/2" FENTON "ILLINOIS SOLDIERS AND SAILORS HOME; QUINCY, ILL." FLAT PLATE – DK. MARI. (RARE AND VERY DESIRABLE; SUPER BRIGHT COLOR AND GREAT DETAIL)**
- _____ 346. 9-1/4" Fenton Peacock at the Urn Flat Plate – Mari. (scarce w/ nice average color and irid.)
- _____ 347. 9-1/4" Fenton Ribbon Tie Low Ruffled 3 in 1 Edge Plate – Blue (very scarce; has really nice irid. and shape)
- _____ 348. **6" FENTON "UTAH LIQUOR CO. - LEWIS 66 RYE" / GARDEN MUMS 2 SIDED CARD TRAY – AMYTH. (VERY RARE AND DESIRABLE; NEEDS CLEANING IN THE CENTER)**
- _____ 349. **6" FENTON "OGDEN FURNITURE AND CARPET CO.; OGDEN, UTAH" / GARDEN MUMS 6 RUFFLED BOWL – AMYTH. (ANOTHER OF THE MANY RARE ADVERTISING ITEMS WE'RE SELLING HERE)**
- 1800 350. **9-9-1/2" FENTON HOLLY FLAT PLATE – VELVA ROSE/ STRETCH (SUPER RARE! AN EXPERIMENTAL OLD FENTON ITEM YOU WILL NOT FIND AGAIN)**
- 2100 351. **9-9-1/2" FENTON CAPTIVE ROSE FLAT PLATE – AMYTH. (RARE AND VERY DESIRABLE; HAS SUPER HIGHLIGHTS; REALLY NICE)**
- _____ 352. 9-1/4" Fenton Orange Tree w/ Trunk Plate – White (very scarce; has super bright irid.)
- _____ 353. Fenton Panther Lg. Ruffled Ftd. Master Berry Bowl w/ B & B Ext. – White (very rare color for this item; irid. a bit lighter)
- _____ 354. 5-1/2" Fenton Panther Ftd. Round Sauce – Amyth. (very scarce base color w/ nice irid.; has a small open bubble on foot)
- _____ 355. **FENTON MILADY TANKARD HANDLED WATER PITCHER – BLUE (RARE AND DESIRABLE; GREAT DETAIL AND IRID.)**
- 1300 356. **FENTON BLACKBERRY BLOCK TANKARD HANDLED WATER PITCHER – BLUE (ANOTHER RARE FENTON PRODUCT W/ NICE IRID.)**
- 1100 357. Fenton Blackberry Block 7 Pc. Tankard Water Set – Mari. (quite a rare set to find; complete and well matched)
- _____ 358. Fenton Fluffy Peacock 7 Pc. Bulbous Water Set – Amyth. (rare and a tough set to find; has a small bruise on handle)
- _____ 359. Fenton Paneled Dandelion 7 Pc. Tankard Water Set – Amyth. (very scarce and well matched set)
- _____ 360. **FENTON ENAMELED SHASTA DAISY/ ZIG ZAG BULBOUS HANDLED WATER PITCHER – ICE GREEN (RARE AND DESIRABLE PASTEL ITEM; REALLY NICE IRID. AND DECORATION)**
- _____ 361. Fenton Heart and Trees Lg. Ftd. Ruffled Master Berry Bowl w/ B & B Ext. – Mari. (rare and desirable pattern w/ excellent irid.)
- _____ 362. **8-1/2" FENTON DRAGON AND LOTUS LOW RUFFLED BOWL – P. OPAL. (RARE COLOR FOR THIS PATTERN; HAS NICE OPAL.)**
- _____ 363. 8-1/4" Fenton Dragon and Lotus Bowl w/ 3 in 1 Edge – Green (super, super color and irid; very attractive)
- _____ 364. **FENTON 3 ROW OPEN EDGE 4 SIDED SQUARE BOWL – WHITE (RARE SHAPE IN A RARE COLOR; TOUGH TO FIND)**
- _____ 365. **FENTON BUTTERFLY ORNAMENT NOVELTY – DK. MARI. (RARE AND EXTREMELY DESIRABLE; PERFECT; W/ GREAT COLOR AND IRID.)**
- _____ 366. **9" FENTON DRAGON AND STRAWBERRY LG. ICE CREAM SHAPED BOWL – BLUE (RARE AND DESIRABLE; GREAT DETAIL AND IRID.)**
- _____ 367. 9" Fenton Holly 8 Ruffled Bowl – Black Amyth. (rare base color w/ nice satiny irid.)
- _____ 368. 8" Fenton Horsehead Medallion Ftd. 8 Ruffled Bowl – Green (very scarce w/ bright irid.; really nice)
- _____ 369. 10" Fenton Stag and Holly Ftd. Ice Cream Shaped Bowl – Aqua/ Mari. (very scarce base color w/ Mari. overlay)
- _____ 370. **FENTON BLACKBERRY SPRAY 6 RUFFLED HAT – AQUA OPAL. (EXTREMELY RARE AND DESIRABLE FENTON PASTEL ITEM)**
- _____ 371. Fenton Blackberry Spray 6 Ruffled Hat – Amyth./ Slag (odd texture; really different)
- _____ 372. Fenton Blackberry Spray 2 Sided Hat – Aqua/ Mari. (scarce; nice base color)
- _____ 373. **FENTON POND LILY 2 SIDED HANDLED BON BON – PEARLIZE BLUE MILK GLASS (THE THIRD IN A SERIES OF TALKED ABOUT ITEMS)**
- _____ 374. 6-1/2" Fenton Rustic "Sweet Pea" Squatty Flared Vase – White (frosty and really nice; a scarce size)
- _____ 375. Surprise



Lot #150



Lot #160



Lot #157



Lot #151



Lot #149



Lot #153



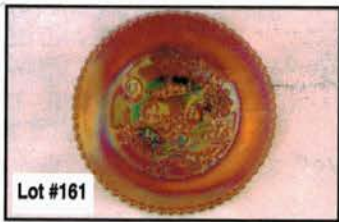
Lot #148



Lot #152



Lot #158



Lot #161



Lot #159



Lot #155



Lot #162



Lot #146



Lot #144



Lot #143

BURNS

AUCTION SERVICE

P.O. BOX 608 • BATH, NEW YORK 14810

presents

**The 2001 H.O.A.C.G.A.
Convention Auction**

**Saturday, April 28, 2001
9:30 A.M.**

**Preview: Friday, April 27 at 6:00 P.M.
& Saturday, April 28 at 7:00 A.M.**



Lot #329

First Class Mail
U.S. Postage
PAID
Eugene, Oregon
Permit No. 305

LEE MARKLEY
BOX 306
MENTONE IN 46539

