



CARNIVAL GLASS AUCTION

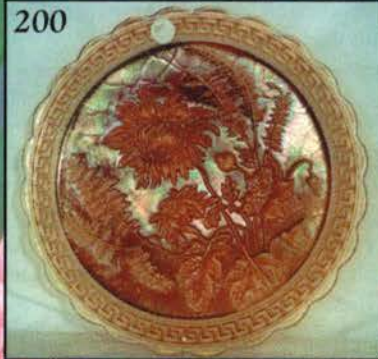


Saturday, March 24, 2001  9:00 a.m.

180



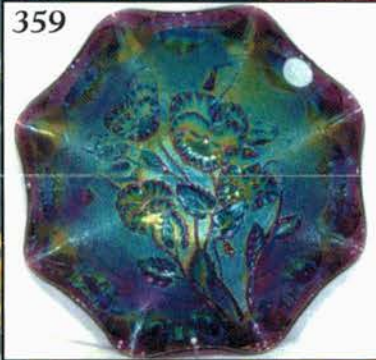
200



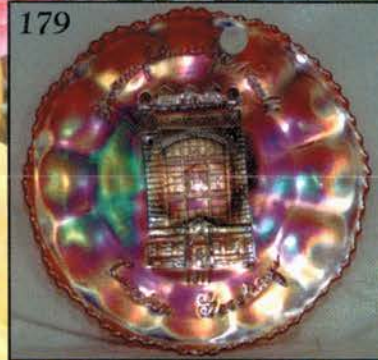
178



359



179



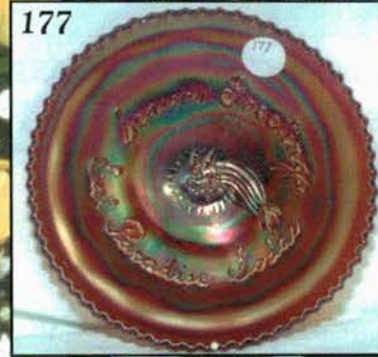
308



338



177



345



Held Inside the Mickey Reichel Auction Center, Boonville, Missouri

Office: 660-882-5292 • Home: 660-882-5283

 Direct e-mail: mreichel@undata.com

NEW WEB SITE ON: <http://www.yourauctionpage.com/reichel>

Held Inside the Mickey Reichel Auction Center

1 Mile North of I-70 on Hwy. 5, Exit 101, Boonville, Missouri • 20 Miles West of Columbia, MO on I-70

Preview Friday 12 p.m. - 6 p.m. and 7:30 a.m. - 9:00 a.m. Day of Auction



TERMS: Cash or Good Check, VISA and MasterCard accepted.



3% Handling Fee on all purchases with, 3% discount for Cash or Check. Proper I.D. required.

WEBSITE: www.yourauctionpage.com/reichel

ABSENTEE BID POLICY:

WRITE IN BIDS: If you are unable to attend the auction, we will be happy to accept absentee bids which must be received by THURSDAY, MARCH 22, 2001. Don't Delay. E-Mail: mreichel@undata.com

FOR AUCTION PRICE RESULTS: Send \$3.00 and Large S.A.S.E. to 516 Third Street, Boonville, MO 65233-1536

PLEASE NOTE: There is a \$5 handling charge for each successful bid which will be added to the selling price for all write-in bids. This is in addition to the cost of postage, insurance and packing. Your write-in bid will be entered just as if you are present and bidding. Successful bidders will be notified in 1 to 3 days by the auctioneer (so be sure to include your phone number). Direct mail bids to Auctioneer Mickey Reichel, 516 Third Street, Boonville, MO 65233-1536. Terms: Cash or Check accepted with proper I.D. and Social Security Number and References. Announcements made day of the auction supercede all printed material. Not Responsible for Accidents or Sold Items.

No return on any items once they leave the Auction Center (No Exceptions).****

Call for additional information: 660-882-5292 days or 660-882-5283 evenings before 9:00 p.m.

FAX: 660-882-5292 (evening hours start FAX transmission after beep)

MAIL BIDS: Items are bid on in perfect condition with average or above iridescence OR as listed in the brochures. Bids will not be carried out when damage on an item has been found during the auction.

PEOPLE PRESENT AT AUCTION ARE RESPONSIBLE FOR FINDING ANY PINHEADS, WEAR, SPOTTINESS, MANUFACTURER'S DEFECTS OR ANY OTHER MINOR FLAWS, ETC. *****

NOTE: Read each line, as we have accentuated the type of no particular piece, all are special.

Make Reservations EARLY at one of these local motels:

Days Inn: 660-882-8624 • Comfort Inn: 660-882-5317 • Super 8: 660-882-2900

Auction Consists of Rarity, Great Irid. and Variety

THANK YOU FOR ATTENDING TODAY

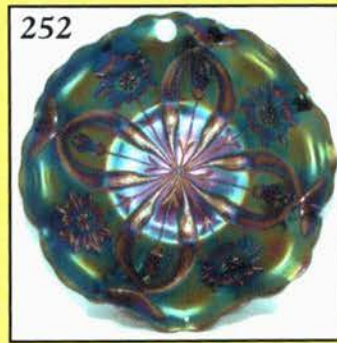
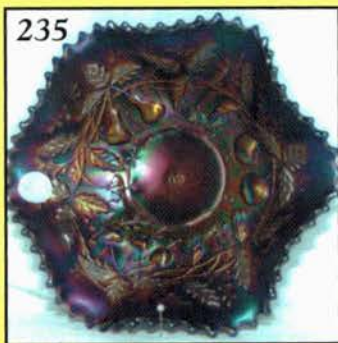
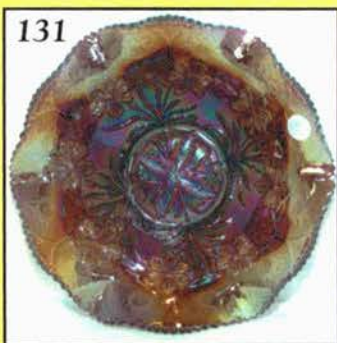
- | | | | |
|-------|--|-------|--|
| _____ | 1. M - Imp. Lustre Rose Tumbler - Base Chip | _____ | 13. B - Orange Tree Loving Cup - Electric Finish |
| _____ | 2. M - N Peacock at the Fountain Punch Cups - 3 x \$ | _____ | 14. Lt. M - Hearts and Flowers Compote |
| _____ | 3. P - N Dandelion Tumblers - Choice A or B | _____ | 15. M - Golden Harvest Wines - 6 x \$ |
| _____ | 4. P - N Oriental Poppy Tumblers - Choice A,B,C,D,E, F | _____ | 16. P - 8" Imp. Ripple Vase - 3/4" Base, 5/4" Top - Outstanding! |
| _____ | 5. Scarce M - Wine and Roses Pitcher with Four Goblets - Great Find! | _____ | 17. M - Argentina (?) 7 1/2" Patterned Cologne with Stopper - Complete - Neat Item |
| _____ | 6. Outstanding M - Large 474 Water Pitcher | _____ | 18. M - Pattern Glass 7" Perfume with Neat Feathered Stopper |
| _____ | 7. G - N 7 pc. Grape and Cable Water Set - Dandy Group | _____ | 19. M - Fenton Peacock at the Urn Goblet - Scarce |
| _____ | 8. Outstanding P - Imp. Grape Decanter and Six Matching Wines | _____ | 20. Super M Radium - 8" Diamond and Fan Cut Vase |
| _____ | 9. Lime Vas. - Lg. Orange Tree Mug - 3/8" Top, 3/8" Base - Glows | _____ | 21. Electric B - N Ruffled Good Luck Bowl - Rib Ext. |
| _____ | 10. M - N Singing Birds Mug - Pumpkin Finish - Lots of Pink | _____ | 22. Lav. A - N Ruffled Good Luck Bowl - Rib Ext. - Beautiful Iridescence. |
| _____ | 11. Rare Australian BA Banded Diamonds Tumbler - A Beauty! | _____ | 23. Mandarin Red - 13" Thin Rib Mid-Size Funeral Vase - No Irid. |
| _____ | 12. Emerald G - Orange Tree Hat Pin Holder - Foot Chips | _____ | 24. Red - 10" Stretch Vase - Polished Pontil On Base - Plate 839 |
| | | _____ | 25. Red - Stretch 13" Imp. Vase - 3/2" Base, 5/2" Top - SUPER |

26. **Reninger B - Ruffled Stippled Good Luck Bowl - Rib Ext. - Very Scarce**
27. Reninger B - PCE Stippled Good Luck Bowl - Rib Ext. - Normal Cleat Nick
28. Amber - 9" Imp. Open Rose Plate - Minor Rose Roughness - Still A Beauty
29. M - Lg. Ftd. Persian Medallion Fruit Bowl - G & C Ext. - Foot Roughness
30. B - Lg. Ftd. Persian Medallion Fruit Bowl - G & C Ext. - Minor Tip Chips
31. **PO - Petal and Fan 6 1/2", 2-Sides Up Dish - Fancy Metal Holder**
32. **PO - 9 1/4", 3 in 1 Edge Floral Enamel Dec. Single Flower Bowl**
33. **PO - 8 3/4" Dome Base Floral Enamel Dec. Stippled Petals Rd. Bowl**
34. **PO - 9", 3 in 1 Edge Double Stem Roses Bowl - Lots of Opal**
35. PO - Fishnet Epergne Center Lily - Only - C.R.E.
36. **PO - 6 1/4" Scarce Wishbone and Spades Plate - 1 1/4" Opal**
37. **Lime Vas. Opal - 6" Ruffled Ball Ftd. Waterlily Sauce - RARE**
38. **Super B - 6 1/4" Persian Medallion Plate - Outstanding**
39. **Super M - 6 1/4" Persian Medallion Plate - Outstanding**
40. Great W - 7" Persian Garden/Pool of Pearls Plate - Marie Chips
41. Rare Super W - Fenton Mini Blackberry Compote - Base Nicks, But a Beauty
42. Scarce W - JIP Rose Spray Little Compote
43. **W - 9 1/8" Fenton Orange Tree Plate - Beautiful Irid. - Above Average**
44. BA - Spiral Dance Hatpin - Radium Finish
45. BA - Diamond Trail Hatpin - Radium Finish
46. B - Kittens Toothpick Holder or 2 3/8" Vase - Lite Wear
47. Custard - 5 1/2" ICS N Peacock at the Urn Dish - No Irid.
48. A - Mlbg. Spade Shape Holly Sprig Nappy - Radium
49. **Beautiful M - 9 1/4" Spat. Ftd. N Grape & Cable Plate - Meander Ext.**
50. **Rare M - 9" N PCE Stippled Three Fruits Bowl - One of Few**
51. M - 9 1/2" Peacock and Grape Collar Base Plate - Radium Finish
52. **P - 11" Victorian 8-Ruffle Bowl (Dugan) - Outstanding Example**
53. Scarce Smoke - Imp. 9 1/4" Shell Plate - Pastel Beauty
54. **Dark Rich M - N Ftd. Wishbone Ruffled Bowl**
55. M - Chesterfield Cream and Sugar - Imperial
56. A - 7 1/2" Rd. Pillow and Sunburst Bowl - Westmoreland
57. M - 6 1/4" Northern Star, 2-Sides Up, Card Tray Plate
58. A - Wreathed Cherry Sm. Banana Shape Berry Dish - Base Chip
59. M - Ruffled Small Rib Compote
60. M - Chesterfield 6" Round Bowl
61. M - 7 1/2" Star and File Rd. Bowl
62. W or Clear - 7" Rd. Frosted Block Bowl - Made In USA
63. M - Frosted Block Oval Pickle or Relish Dish
64. **M - Northern Star 6" Card Tray, 2-Sides Up, Plate**
65. Flashed M - Diamond Checkerboard Nappy
66. PO - Leaf Rays Nappy
67. A - Leaf Rays Nappy
68. M - 4 1/4" Dia. Apple Blossoms Rose Bowl
69. A - #270 Westmoreland Compote
70. Dark M - Vintage Banded Mug

71. M - Wide Panel Tumbler - Rim Chip
72. W - Grape and Cable Tumbler - Signed with N - Contemporary - Still Very Scarce
73. Rich M - Colonial Buttermilk Goblet - Outstanding
74. **M - Whimsey Cut Pattern Tumbler from Canada Dry Bottle - NEAT**
75. B - Butterfly and Berry Tumbler - Beautiful Silver Iridescence
76. M - Soda Gold Tumbler - Extra Nice
77. B - Stippled Rays (Int. and Ext.) Stemmed 2-Handle Compote
78. **B - Grape and Gothic Arches Tumbler - Super Electric**
79. A - N Lustre Flute Hat Shaped Dish
80. A - Fenton 7 1/4", 6-Ruffle Vintage Grape Bowl - Scarce Size
81. Deep P - Big Basketweave Dugan Squatty Vase or Persian Garden Fruit Bowl Base
82. A - 5" Rd. Little Flowers Berry Dish
83. M - 8 1/4" Rib and Panel Vt. Vase - Pontil In Base
84. M - 6 1/4" Mini Morning Glory Vase - A Beauty
85. M - 6 1/8" Mini Morning Glory Vase
86. M - 8 1/4", 3 in 1, Cut Arcs Bowl
87. Pastel M - 9" Rd. Flared Optic and Buttons Bowl
88. G - 9", 6-Ruffle Fenton Captive Rose Bowl
89. **G - 7 7/8" Rd. Imp. Acanthus Bowl - Scarce Color**
90. Yellow Amber - 8", 6-Ruffle Corinth Bowl
91. M - N Lustre Flute Whimsey from Punch Cup
92. **Clam - Frosted Block 5" Rd. Stemmed Compote - Neat Size**
93. P - N Grape and Cable Powder Jar with Lid - Rim Chips
94. P - N 5 1/2" ICS Peacock and Urn Bowl
95. **P - N 5 1/2" ICS Peacock and Urn Bowl - Extra Pretty**
96. Radium M - Chesterfield Lemonade Mug
97. A - Fisherman's Mug - Nice Find
98. P - N Singing Birds Mug
99. M - Lattice and Daisy Tumbler
100. **Rare Indigo Blue - Imp. Tiger Lily Tumbler**
101. A - 6 1/4" N Squatty Thin Rib Vase - Neat Size
102. M - Rococo Vase - Minor Base Flaking
103. Aqua Opal - N Leaf Beads Rose Bowl - Very Desirable
104. M - Persian Medallion Hair Receiver - Silver and Gold Radium
105. M - 5 1/4" Rd. Flared Mlbg. Hanging Cherries Bowl - Rim Chip
106. **Pastel Powder B - 7", 2-Row, O.E. Blackberry 2-Sides Up Basket - Scarce**
107. P - N Round Bushel Basket
108. **Yellow Opal - Collar Base, 8 1/2" ICS Dragon and Lotus Bowl - Rare Color**
109. M - 7" Stippled Rays Scale Band Plate
110. P - N Acorn Burrs Butter Dish Base Only - Base Crack
111. M - 6 1/4" Persian Medallion Plate - Orange Tree Ext.
112. **Scarce B - 7", 6-Ruffle Mirrored Lotus Bowl**
113. Amber - 9 1/4" Imp. Open Rose Plate - Rim Chip
114. P - 8 1/2" Imp. Heavy Grape Plate - Rim Chip
115. Amber - Imp. Open Rose Rose Bowl - Super Example!
116. M - Ruffled Imp. Grape Compote - Dark and Pretty
117. A - Imp. Pansy Sugar Bowl - Ribbed Int. - Multi Electric
118. **Aztel M - 10 1/2" Rd. Flared Imp. Stretch Large Bowl - Signed w/Iron Cross**
119. P - Imp. Diamond Lace Tumblers - Choice A, B, C, D, E, F,
120. **P - N Ivy Town Pump - Old Northwood Favorite**
121. **M - 8 1/4" Moonprint Single Candlestick - Quite Scarce**

122. B - Orange Tree Mug - 3/4" Top, 3" Base - Handle Nick
123. Pastel M - N Singing Birds Mug
124. Red - 6 1/2", 6-Ruffle Fenton Holly Hat Shaped Bowl
125. Lime IG - N Round Bushel Basket
126. W - N 8-Sided Bushel Basket
127. Radium M - N Grape & Cable Cologne Bottle with Stopper
128. A - N Grape & Cable Sweetmeat Compote with Lid
129. A - Mlbg. Court House Bowl - 6-Ruffle - Super Radium
130. M - Mlbg. 5 1/2" Rd. Blackberry Wreath Bowls - Choice A & B
131. Super A Radium - Mlbg. Ruffled Primrose Bowl
132. Multi-Electric A - N PCE Peacocks Bowl - Rib Ext. - SUPER
133. B - 9/4" Fenton Peacock and Urn Plate - Hot Item
134. B - 9/4", 3 in 1 Edge Fenton Holly Bowl - Multi Electric
135. Radium A - Dugan 10-Ruffle Double Stem Rose Bowl - WOW!
136. Super Example Pastel M - N Ruffled Stippled Good Luck Bowl
137. Emerald G - 9" N Three Fruits Plate - Smooth Ext.
138. Lav. Horehound - 9 3/8" N Rose Show Plate - Super Example - Rose Nicks - Rev. Chip Back
139. M - Imp. 11" Great Beaded Bulls Eye Vase - 5 1/2" Top
140. M - Imp. 11 1/4" Super Beaded Bulls Eye Vase - 4 3/4" Top
141. M - Imp. 11 1/8" Nice Beaded Bulls Eye Vase - 5 1/4" Top
142. M - Imp. 10 1/4" Great Beaded Bulls Eye Vase - 4 3/4" Top
143. M - Imp. 10 1/2" Great Beaded Bulls Eye Vase - 5 1/2" Top
144. M - Imp. 10 1/4" Great Beaded Bulls Eye Vase - 6" Top
145. M - Imp. 10 1/2" Great Beaded Bulls Eye Vase - 5 1/2" Top
146. M - Imp. 10 1/4" Great Beaded Bulls Eye Vase - 4 1/2" Top
147. M - Imp. 8 1/4" Nice Beaded Bulls Eye Vase - 5 1/2" Top
148. M - Imp. 8 1/4" Nice Beaded Bulls Eye Vase - 4 1/2" Top
149. M - Imp. 7 1/4" Pretty Beaded Bulls Eye Vase - 5 1/2" Top
150. P - 10" Imp. Beaded Bulls Eye Vase - 5 1/4" Top - ELEC-TRIC!!
151. P - 10" Imp. Beaded Bulls Eye Vase - 4 1/2" Top - Screamer
152. Soft P - 8 3/4" Imp. Beaded Bulls Eye Vase - 5 1/2" Flared Top - Beauty
153. Beautiful Amber - 11 1/2" Bulls Eye Vase - 4 3/4" Irregular Top
154. M - Imp. Fashion Punch Bowl, Base, Six Cups - Extra Nice Set
155. M - 7 1/4" Horse Medallion Plate - Hot Pattern
156. Dark Red - Fenton 6 1/2" Flared Rd. Bowl - 2 1/4" Deep
157. Brick Red - Fenton Vintage Grape Fernery Bowl - Radium Silver and Gold
158. Scarce G - Collar Base, 9", 8-Ruffle Peacock and Grape Bowl
159. Rich G - 9" Ruffled Fenton Holly Bowl - Nice One
160. Scarce P - Dugan Starfish Stemmed Bon-Bon - Square, Ruffled
161. M - 7 1/4" N Grape & Cable Plate - 2-Sides Up - Blues, Yellows, Pinks
162. Rich G - Butterfly and Berry Tumbler - Top of the Line
163. M - Lattice Band, Stork and Rushes Tumbler - Radium Silver
164. B - Peacock at the Fountain Dugan Tumbler - Radium Electric
165. B - Blackberry Block Tumbler - One of the Finest!
166. M - Blackberry Block Tumbler - Stellar Example
167. Ultra Rare Lime Vas. - Radium Imp. Octagon Vt. Tumbler - May be One of a Kind
168. Rare M - Omnibus Tumbler - Beautiful and Desirable
169. Outstanding M - Ten Mums Tumbler - Luscious Pinks and Blues
170. Rare M - Cut Cosmos Tumbler - Great Find
171. Scarce B - Dugan God and Home Tumbler - Exciting Find
172. G - N Grape & Cable Tumbler - 4" Tall, 3/4" Top - Very Pretty
173. M - Scarce Palm Beach Tumbler - Extra Nice
174. Pumpkin M - Orange Tree Orchard Tumbler - Super Example
175. P - Imperial Flute #3 Tumbler - Multi Electric
176. M - Hobnail 3 1/2" Tall, 5" Dia. Lamp - Age Unknown
177. Outstanding A - 6" "Eat Paradise Sodas" Adv. Plate - It's A 10!
178. A - 6 1/4", 6-Ruffle Isaac Benesch & Sons Bowl - Top Notch
179. Rare A - 9 1/4" Birmingham Age Herald Adv. Plate - Lt. Wear (So?)
180. A - 5 1/4", 6-Ruffle Ogden Furniture Adv. Bowl - Another Toughie
181. G - Scarce 7 1/2" N Fruits and Flowers Plate - BW Ext.
182. Yellowish M - Heisey Quilted Diamond Cup and Saucer - Marked
183. G - 7 1/4", 6-Ruffle Smooth Rays Bowl with Ext. Poppy In Marie Base
184. G - 8", 3 in 1 Edge Fenton Autumn Acorns Bowl - Scarce Shape
185. M - Daisy Squares Stemmer Rose Bowl - 2-Sides Up
186. M - Studs Milk Pitcher - Jeanette Glass
187. M - Studs Juice Glass - Jeanette Glass
188. M - Hobstar Flower Compote - Nice Example
189. A - Imp. Windmill Relish Dish - Lg. Chip - Still Pretty
190. Flashed M - Towers Ruffled 3" Tall Vase
191. Scarce - 1/10 Pint Golden Wedding Whiskey Bottle
192. PO - 7 1/8" CRE Honeycomb and Beads Plate
193. M - 9" Smooth Rays Plate by Imperial
194. Scarce M - Imp. Luster and Clear 5 1/4" Tall Bulbous Pitcher
195. Smoke - 10 1/4" Imp. Acanthus Chop Plate - NICE!
196. Lt. Olive - Imp. 8", 8-Ruffle Windmill Bowl - Above Average
197. Scarce G - 8 1/4", 6-Ruffle Fenton Wild Blackberry Collar Base Bowl
198. G - N Alaskan Effect Daisy and Plume Compote - Pl. Int.
199. Australian M - Butterfly Bush 8 1/2" Rd. Large Compote
200. Rare Smoke - 10 1/2" Imp. Chrysanthemum Chop Plate - STRETCHY!! - Great Find
201. Radium M - N PCE Grape & Cable Bowl - BW Ext. (Different Treatment)
202. Rich Ice B - Spat. Ftd. 8-Ruffle N Sunflower Bowl
203. M - 6", 6-Ruffle Persian Medallion Bowl - Orange Tree Ext. - Rare Shape
204. Outstanding A - N Ftd. 8-Ruffle Wishbone Bowl - Way, Way Above
205. Pumpkin M - N Ftd. 8-Ruffle Wishbone Bowl - Nice
206. Emerald G - N 9", 8-Ruffle Stippled Rays Bowl - Smooth Ext. - Outstanding Item
207. Super Rare M - N Diamond Points Basket - Crack In Base - Fantastic Color
208. G - Imp. Grape Wine Glass
209. P - Imp. Grape Wine Glass - Ribbed Interior
210. G - N 7" Squatty Tree Trunk Vt. Vase with Starred Base
211. Pretty M - N Grape & Cable Hatpin Holder
212. Exceptional P - N Ivy Town Pump - Super Irid. - Flake Off Point

213. BA - Top of the Morning Hatpin - Radium
214. Pastel Aqua Opal - N Stippled Dandelion Mug - Lots of Opal
215. M - Heavy Iris Tankard Water Pitcher - Great Example
216. Clam - Imp. Lustre Rose Vt. Water Pitcher - Scarce to Rare
217. Clam - Imp. Lustre Rose Vt. Tumbler - Choice A or B - Also Rare
218. M - Omnibus Water Pitcher - Manufacturer Roughness on Base
219. P - N Greek Key Tankard Water Pitcher - Way Above Average Color - Rim Flaw
220. P - N Creek Key Tumbler
221. M - Hobstar Band Scarce Pedestal-Based Water Pitcher
222. M - Hobstar Band Tumblers - Choice A, B, C, D, E, or F
223. M - Interior Rib 7 pc. Water Set - Scarce Set
224. P - Floral and Grape Bulbous Pitcher (Dugan) CRE Top
225. M - Imp. Star Medallion Milk Pitcher - Outstanding Example
226. Clam - Imp. Star Medallion Milk Pitcher
227. M - Rex Milk Pitcher - Small Flake on Base - Good Color
228. M - Lg. 10¹/₄" Ftd. Orange Tree Fruit Bowl - Beauty
229. Red - Persian Medallion Bon-Bon
230. B - CRE Scottish Thistle Compote
231. M - CRE Ruffled Stream of Hearts Compote - Persian Medallion Ext.
232. Gorgeous M - Dugan Lg. Wreathed Cherry Banana Bowl - The Best!
233. PO - Ruffled CRE Folding Fan Compote - Scarce
234. P - N Grape & Cable Cream Pitcher
235. Scarce B - N 7¹/₂", 6-Ruffle Fruits and Flowers Bowl - WOW!
236. M - 9¹/₂" Fenton Holly Plate
237. M - Octagon Decanter with Stopper - Extra Nice
238. M - Octagon Wines - 4 x \$ - Well Matched
239. Hard to Find M - 9¹/₄", 12-Ruffle Australian Shrike Bowl
240. Top Notch M - 6-Ruffle Pony Bowl - Beautiful Irid.
241. Smoke - 5¹/₂" Ruffled Imp Open Rose Bowl with Fancy Metal Frame
242. G - 7" Low Ruffled Blackberry Spray Compote
243. Very nice B - Pond Lily 2-Sides Up Bon-Bon
244. Dark Ice B - 7¹/₂" N Tri-Cornered Drapery Candy Bowl
245. Australian BA- 7¹/₄", 12-Ruffle Butterfly Bush Compote
246. Striking Electric B - Good Luck Ruffled Bowl - Rib Ext. - Super
247. Radium M - 8¹/₂", 6-Ruffle Pony Bowl
248. P - N Fruits and Flowers Stemmed Bon-Bon - Choice Example
249. P - Electric 9" N Grape & Cable Plate - BW Ext. - A Keeper!
250. A - N 9" Grape & Cable Vt. Plate - Smooth Ext.
251. G - Mlbg. Radium 8¹/₂" ICS Mayan Bowl - Lots of Irid.
252. Rich P - 10¹/₂", 8-Ruffle Four Flowers Vt. Bowl - Awesome Color
253. Red Amberina - 7¹/₂", 8-Ruffle Fenton Acorn Bowl - A Dandy!
254. IB - N Fine Cut and Roses Rose Bowl - Fancy Int. - Good Feet
255. W - 6" Flared Cherry Chain Plate - Super Irid.
256. W - Fenton Flowers and Frames Orange Tree Nut Bowl (?)
257. W - 11¹/₂" ICS Persian Garden Large Beautiful Bowl
258. W - 8³/₄" Rustic Vase - Pinks and Greens
259. W - Orange Tree Punch Bowl, Base, 7 Cups - Sold a Set - Two Cups Repaired
260. B - Miniature Blackberry Compote - Rim Chipped
261. A - Lattice and Daisy Tumbler - Radium Silver Beauty
262. M - Lattice and Daisy Tumbler - Radium Gold Beauty
263. P - N Electric Peacock at Fountain Tumbler - Exquisite
264. B - Lattice and Grape Tumbler - Great Example
265. G - Butterfly and Fern Vt. Tumblers - Choice A, B or C
266. M - Waterlily and Cattails Tumblers - Choice A or B
267. B - Scarce Blueberry Tumblers - Choice A, B, C or D
268. G - Butterfly and Fern Tumbler - Blues and Pinks
269. G - N Singing Birds Tumblers - Choice A, B, C, D or E
270. Teal - Imp. Tiger Lily Tumbler - Glows Lightly
271. P - N Good Luck Ruffled Bowl - BW Ext. Electric
272. A - Mlbg. 9¹/₂" Ruffled Holly Sprig Bowl - Radium Pinks and Golds
273. Radium A - 6-Ruffle Mlbg. Nesting Swan Bowl - Extra Nice
274. P - N Ftd. Ruffled Wishbone Bowl - Multi Electric
275. Glowing Vas. - Collar Base 8-Ruffle Dragon and Lotus Bowl - Scarce
276. P - Victorian 6-Ruffle, 11¹/₂" Bowl - Dugan - Top Notch
277. A - N 8³/₄" Ruffled Spat Ftd. Sunflower Bowl - Great Pattern
278. Gorgeous P - Dugan Lg. Wreathed Cherry Banana Bowl - Fabulous
279. Scarce B - Ruffled Iris Compote
280. M - Ruffled Iris Compote
281. Green Cambridge Buzz Saw Small Cruet - No Stopper - Beautiful
282. Red - 2-Row O.E. 5¹/₂", 2-Sides Up Basket
283. B - 2-Row O.E. 5¹/₂", 2-Sides Up Basket
284. Radium M - Mlbg. Leaf and Little Flowers Ruffled Compote
285. P - 6³/₈" Wishbone and Spades Plate - Way Above Average - Smooth Back
286. M - 8¹/₂" Beauty Bud Vase
287. M - Little Basketweave 5¹/₄" Tall Handled Basket
288. P - N Grape & Cable Whiskey Shot Glass - Top of the Line
289. M - Sea Thistle or Cane and Scroll 4" Pitcher - Sowerby
290. M - Split Diamond 3¹/₂" Tall Pitcher
291. M - 4¹/₄" Field Thistle Little Bowl with S.P. Base - Neat
292. Teal - Small Shell Pattern Dish - Footed
293. M - Knights of Columbus Shot Glasses - 6 x \$
294. BA - Nautilus Sugar Bowl - Way Above Average
295. P - N Raspberry Gravy Boat - One Food Chip
296. Beautiful P - Heavy Iris Tumbler
297. B - Miniature Blackberry Compote
298. M - Wide Panel Miniature Compote - No Berries
299. G - Mlbg. 10" ICS Hanging Cherries Bowl - Blue and Pink Satin
300. A - 9¹/₄" Twigs Bud Vase
301. Scarce A - Fenton Flowers or Orange Tree Rose Bowl
302. B - 8¹/₄", 8-Ruffle Collar Base Dragon and Lotus Bowl - Spectacular
303. Lime Vas. - 9¹/₄", 8-Ruffle Square Collar Base Dragon and Lotus Bowl - Neat
304. Rare Persian B - 8¹/₂", 8-Ruffle Fenton Vintage Bowl
305. M - 9¹/₄" Leaf Chain Plate - Yellow Irid. - Very Nice
306. Red Reverse Amberina - 2-Row, O.E. JIP Basket
307. Cherry Red - 6¹/₄" Blackberry Spray Hat - 2-Sides Up - Fantastic
308. Red - 9", 8-Ruffle Fenton Holly Bowl - Screamer




309. Amber Base, Red Top - Fenton Ruffled Holly Compote
 310. Red Amberina Slag - 9", 8-Ruffle Fenton Holly Bowl
 311. Brick Red or Rich Amber - 9", 8-Ruffle Fenton Holly Bowl
 312. Pastel M - N Ftd. Ruffled Poinsettia Bowl - Outstanding
 313. Red Amberina - 9½" Fenton Fine Rib Vase - Unusual Base Color
 314. M - 10½" Cane and Daisy Cut Vase - Massive!
 315. M - Radium 10½" Cut Flowers Cylinder Vase - Lots of Irid.
 316. Beautiful G - 11½" Plume Panels Vase - Show Stopper
 317. Rich P - 7½" Squatty Imp. Ripple Vase - 6½" Top, 3½" Base - Dandy
 318. G - N 5½" Squatty Leaf Columns Vase - 4½" Top, 3½" Base
 319. M - 7" IMP Ripple Swung Vase - Rib Int. - 4" Top - Super Color
 320. Beautiful Radium M - 8½" JIP Morning Glory Vase
 321. P - 12" Imp. Freefold Vase - Radium Electric
 322. Yellow M Flashed - 12¼" Dugan Spiralex Vase - A Collector's Must
 323. PO - 9¼" Dugan Wide Rib Vase
 324. M - 10½" Florentine Candlesticks Pair - Dark Top to Bottom
 325. Smoke - 7" Imp. Hexagonal Base, Fluted Candlesticks - Pair - Pretty
 326. B - 4¼" Nugget Pitcher - Pontil on Base - Pilgrim Glass
 327. M - Imp. Star Medallion Milk Pitcher
 328. M - 8" Imp. Star Medallion Flared Bowl - Extra Nice
 329. Pink - Brocaded Daffodil 8-Sides Compote - 5¼" Width
 330. IG - 6", 10-Sided, 2-Handled Brocaded Palms Bowl
 331. IB - 6", 8-Sided, 2-Handled Brocaded Palms Bowl
 332. P - Dugan 8" Tri-Corner Six-Petals Bowl - Gorgeous
 333. A - 5¼" ICS N Peacock and Urn Bowl - Multi Electric
 334. A - Mlbg. 6", 3 in 1 Edge, Radium Blackberry Wreath Bowl
 335. M - 4½" Rd. Ftd. Dahlia Berry Bowl
 336. G - Mlbg. 6" Cosmos Shallow Bowl or Plate - Radium
 337. BA - Grape Delight Ftd. Nut Bowl - Electric Highlights
 338. Gorgeous A - 9" N Peacocks Plate - Rib Ext. - Multi Electric
 339. A - N Stippled, Ruffled Peacocks Bowl - Rare with Stippling
 340. P - Ruffled N Peacocks Bowl - Rib Ext. - Birds Are Hot!
 341. Pastel M - 9¼" N Stippled Peacocks Plate - Rib Ext. - Scarce
 342. Pastel M - 9" N Peacocks Plate - Blues, Yellows and Pinks
 343. M - N PCE Peacocks Bowl - Rib Ext. - Dandy Example
 344. M - N Ruffled Peacocks Bowl - Rib Ext. - Full of Pinks
 345. B - N 9" Stippled Peacocks Plate - Rib Ext. - Super Hot
 346. B - N 9" Peacocks Plate - Rib Ext. - Multi Electric
 347. B - N PCE Peacocks Bowl - Rib Ext. - Another Dandy!
 348. Reninger B - N PCE Peacocks Bowl - Rib Ext.
 349. M - Question Marks Two Handled Footed Bon-Bon
 350. M - N Deep Paneled Holly Bon-Bon
 351. Pastel IB Opal Finish - Jeannette Glass Co. Butterfly Dish
 352. Moonstone - 9¼", 6-Ruffle Westmoreland Dogwood Bowl - Truly Undervalued
 353. M - 8¾" Lg. Rd. N Cherry and Cable Master Berry Bowl - Rare Pattern
 354. Lime - 10" CRE Square Ruffled Fenton Smooth Rays Bowl - M. Overlay
 355. A - N 6" Grape & Cable Card Tray Plate
 356. PO - 8½", 8-Ruffle Dugan Flower and Frames Bowl - 2" of Opal
 357. A - 9½", 8-Ruffle Collar Base N Wishbone Bowl - BW Ext.
 358. G - 10", 3 in 1 Edge, Mlbg. Rays and Ribbons Bowl
 359. P - 9" Ruffled Imp. Pansy Bowl - Absolutely Incredible Irid.
 360. W - 9½", 10"-Ruffle Double Stem Roses Bowl - Multi Stretch Beauty
 361. G - 9½", 6-Ruffle Coin Dot Bowl
 362. P - 4" Fenton Contemporary Butterfly Ornament
 363. B - 9", 6-Ruffle Fenton Holly Bowl
 364. P - 9" N Strawberry Plate - BW Ext. - Electric Blue Highlights
 365. A - Smooth Rays Ruffled Compote
 366. M - Small Ruffled Fenton Holly Compote
 367. M - 6¼", 6-Ruffle Sailboats Little Bowl - Extra Nice
 368. M - 9" CRE Top Rustic Vase
 369. P - N Wild Rose Nut Bowl
 370. Clear, Iridized Pastel Imp. Scroll Embossed Compote - Curved Star Ext. Electric
 371. P - 8", 8-Ruffle Imp. Windmill Bowl
 372. M - 5½", 6-Ruffle, 2-Row, O.E. Basket
 373. Clear - 9" Rd. Imp. Smooth Rays Bowl - Pastel Radium Electric
 374. B - Scarce Orange Tree Breakfast Cream Pitcher
 375. Scarce N B - Beaded Cable Rose Bowl - Multi Electric Winner
 376. M - 8" Flared Out, Rd. Imp. Grape Bowl - Scarce Shape
 377. M - Fenton Butterfly 2-Sides Up Bon-Bon
 378. M - 6¼" Stippled Rays Plate - Scale Band Ext.
 379. G - Mlbg. 6" CRE Holly Sprig 2¼" Deep Bowl - Neat Size and Shape
 380. M - 9", 8-Ruffle Imp. Hobstar and Arches Bowl - Great Example
 381. M - 9" Rd. Scalloped Imp. Diamond Lace Berry Bowl - Super
 382. Lav. - 6½" Rd. Deep Flared Fenton Coin Dot Bowl
 383. Clear - 7½" Flared Rd. Imp. File Bowl - Pastel Radium Electric
 384. Clear - 8" Flared Imp. Scroll Embossed Bowl - Pastel Radium Electric
 385. M - 8", 3 in 1 Edge Contemporary Windmill Bowl - Signed IG
 386. M - Golden Wedding Pint Whiskey Bottle - No Cap
 387. A - 9" Twigs Bud Vase - Base Chipped
 388. G - Ruffled Plain Jane Compote
 389. M - Ruffled Plain Jane Compote
 390. PO - 7¼", 6-Ruffle Dugan Stippled Flower Bowl - Loads of Opal
 391. G - Fenton Stippled Rays Bon-Bon
 391-A. M - Fenton Waterlily and Cattails Bon-Bon
 392. Aqua - 6", 8-Ruffle Imp. Grape Bowl
 393. G - 6½" Smooth Rays Bowl
 394. M - Plain Jane Ruffled Compote
 395. M - Smooth Rays 7 pc. Berry Set
 396. M - Ruffled Smooth Rays Compote
 397. G - N 14½" Alaskan Effect Wide Panel Funeral Vase - Interior Cinders
 398. Teal - 8½" JIP Corinth Vase
 399. M - 9¼" Twigs Bud Vase
 400. Pastel Pink and Green Tinted - 7½" JIP Dunbar Vase - 7" Top
 401. Pastel Pink and Blue Tinted - 4½" JIP Dunbar Whimsey Vase from Tumbler
 402. M - 4½" JIP Dunbar Vase from Tumbler with Rolled Rib Base


403. M - Top, Clear Base, 12", 12-Panel Candle Vase
 404. Ice G Vas. - 7/4" Diamond Stretch Ribbed Vase - **Plate 89**
 405. M - Persian Medallion Hair Receiver - Extra Nice Example
 406. Clear 4 1/2" Tall Barrel Bank - Silvery
 407. Persian B - Westmoreland 270 Compote - Stretch M Overlay - Nice Item
 408. M - 9/4" Imp. Grape Low, Low Ruffled Plate
 409. M - Imp. Vintage 9" Rd. Center-Handled Server
 410. M - Question Marks Two-Handled Ftd. Bon-Bon
 411. M - Imp. Pansy Cream and Sugar
 412. M - 5 1/2" Rolled Edge Waterlily and Cattails Sm. Float Bowl
 413. Red Amberina - 7 1/2" Fenton 2-Row, O.E. Plate - Non-Iridized
 414. M - Canada Dry Pop Bottle
 415. M - 1993 ICGA Texas Tumbler with Frolicking Bears
 416. M - Imp. Grape Decanter - Signed IG - Contemporary
 417. Outstanding Ice B - Imp. Tiger Lily Water Pitcher - Signed IG - Contemporary
 418. Vas. Opal - 1999 SDCCGCC Poppy Rose Bowls - Choice A or B
 419. Cobalt B - HOACGA 2000 Orange Tree Wines - Choice A or B
 420. M - Imp. Octagon Toothpick - Mkd. IG - Contemporary
 421. Radium G - Imp. 3 in 1 Pattern Toothpick - MKD. IG. - Contemporary
 422. Lav. Opal - 1984 LLCGC Love Bird Bell
 423. G - Swans Toothpick - Summit Glass - Contemporary
 424. P - Fenton Fantastic Poppy Show Vase - Contemporary
 425. M - 1988 HOACGA Hobnail Room Display Cuspidor
 426. Sapphire B - 1989 HOACGA Hobnail Room Display Cuspidor
 427. Red - Fenton Mid-Size Hobnail Cuspidor - Contemporary
 428. Ice G Lime - Imp. Robin Whimsey Hat - Signed IG - Contemporary
 429. Yellow Vas. - Contemporary Toothpick Holder - Souv. of Millersburg Glass Co. - Founded 1909
 430. Ice B - 1982 HOACGA Corn Vase - Fenton
 431. B - St. Clair Co. Feathered Serpent Tumbler - Contemporary
 432. Yellow Golden Glow - Singleton Bailey's 11" CRE Farmyard Chop Plate - Contemporary
 433. B - N Ribbons and Squares 6 1/2" Plate - Verre D' or Line
 434. W - 4 1/2" Rd. Dugan Dahlia Berry Bowl
 435. W - 4 1/4" Rd. Stemmed Orange Tree Sherbet
 436. B - Curved Star 5" Rd. Compote - Rim Roughness
 437. A - Beaded Shell Mug
 438. M - Banded Stork and Rushes Mug
 439. P - N Grape & Cable Whimsey Hat From Tumbler
 440. M - Vintage Powder Dish with Lid
 441. B - Orange Tree Powder Dish with Lid
 442. M - Orange Tree Powder Dish with Lid
 443. Topaz - Hobnail Fenton Tumbler - 1990s
 444. P - Popular Fisherman's Mug
 445. B - Fenton Lattice and Grape Tumbler - Silver and Blues
 446. P - N Acorn Burrs Tumbler - Chip on Marie
 447. Scarce M - Rising Sun Juice Glass
 448. Australian M - 5 1/4", 12-Ruffle Swan Bowl
 449. Australian M - 7" Rd. Butterfly Bush Compote
 450. Ice B - 8-Sided, 2-Handled Brocaded Acorns Bowl
 451. Ice G - 8-Sided, 2 Handled Brocaded Palms Bowl
 452. Emerald G - 7 1/2" N Wild Rose Footed Bowl - NICE!
 453. A - Fenton Butterfly Bon-Bon - Rim Roughness

454. G - Mlbg. 10", 6-Ruffle Rays and Ribbons Bowl
 455. Large M Piggy Bank
 456. Amber - 1974 ACGA 9 1/2" Plate - Capitol Building - Signed IG
 457. P - Smith Glass 1973 ICGA 9 1/4" Plate - Des Moines, Iowa
 458. P - Fenton 1970 Glass Blower Plate
 459. Red - 1973 ACGA Dresser Tray - Natural Bridge Pattern
 460. A - Stretch 5" Rose Bowl - Iron Cross Mark - Base Crack
 461. P - N Grape & Cable Powder Dish - Base Only
 462. M - Ribbed Exterior Paneled Tumbler
 463. B - Scarce Milady Tumbler - Marie Bruise
 464. B - Orange Tree Orchard Tumbler - Super Electric - Base Chips
 465. B - Contemporary Fleur De Lis Tumbler
 466. P - Imp. Grape Wine Glasses - 2 x S - Extra Nice
 467. M - Imp. Grape Wine Glass - Very Nice Example
 468. Ice G - N Wide Panel Epergne - Base Only - Gorgeous - Large Chip Where Lily Fits
 469. P - N Grape & Cable Butter Dish Base - Marie Chip
 470. Teal - 8 1/2" Butterfly and Berry Lg. Ftd. Master Berry Bowl - Possibly One-of-a-Kind Color - Rim Cracked

THANK YOU FOR ATTENDING TODAY

SPECIAL NOTE:
 **CALENDAR OF AUCTION EVENTS**

Saturday, May 19, 2001
 Carnival Glass at Boonville Center
Saturday, June 23, 2001
 Carnival Glass at Boonville Center
Saturday, August 18, 2001
 Carnival Glass at Boonville Center
Saturday, October 13, 2001
 Wichita, Kansas - Air Capital Convention

For Free Color Catalogs & Information Write:
Mickey Reichel
 516 Third Street, Boonville, MO 65233-1536
 or Call: 660-882-5292 days or
 660-882-5283 evenings
 E-mail: mreichel@undata.com
 Website: www.yourauctionpage.com/reichel
 Call today for 2001 bookings.
 (1 piece or entire collection!!)

