

BURNS

AUCTION SERVICE

presents

The Decker Collection

**Friday & Saturday
March 9 & 10, 2001**

**Friday: Preview 12:00 Noon • Auction 6:00 P.M.
(Lots 1-205)**

**Saturday: Preview 8:00 A.M. • Auction 9:30 A.M.
(Lots 206-End)**

at the

Holiday Inn-Select

15471 Royalton Road

Strongsville, Ohio 44136 • (440) 238-8800

(Located approximately 1 mile south of the Ohio
Turnpike at Exit 231/231A off I-71)

Licensed & Bonded by the Department of Commerce
in Favor of the State of Ohio



Now THIS is an auction!!! Burns Auction Service is very pleased to be able to bring to you ... The Decker Collection!

Now a number of you newer collectors are thinking ... "Who are these people?" ... well, let me tell you. I can't remember the first time I met these folks (I was still in my teens) but they were ever present in the 70's and 80's in my buying and selling practices. I remember liking and buying pastels when not a lot of people cared for them; well, guess what? John and Lavina Decker sure did and if it was fairly priced they bought it. There are a whole lot of items in this collection that they either bought from me privately or at my auctions, starting with my first one in 1980. Well, pretty soon they amassed one of the better "Closet Collections" in the U.S.

Anyway, if you like pastels, Northwood, Tankards, rare colors, great color, etc. you're gonna love this selection. The Deckers loved this glass and when you see the set up, you're going to agree.

Lavina passed, away this fall (the same day as Eleanor Hart) and had been predeceased by John a couple years ago. Their son, Gerald, has contacted us and the rest, as they say, is going to be history.

The Holiday Inn-Select of Strongsville, Ohio will host the event. The motel is located 1/2-1 mile south of the Ohio Turnpike at Exit 231 off I-71. The Cleveland-Hopkins Airport is located about 5 miles north and the motel does provide a Shuttle Service to and from the facility. I would suggest making your reservations A.S.A.P. and if you choose not to stay at the Holiday Inn-Select there is a Red Roof Inn located right next door.

For information on the motel or for reservations, call the motel direct at (440) 238-8800 or for any other information on the glass or if we can be of assistance, call or write: Burns Auction Service.

CHECK OUT BURNS AUCTION SERVICE ON THE WEB!

Visit our new Web site for information on upcoming auctions, complete auction listings and photos of auction highlights. You can e-mail your bids or requests for information.

<http://carnival.ksnews.com/burnsauction> e-mail: brnzauctsv@aol.com

BURNS AUCTION SERVICE

Tom Burns
P.O. Box 608, Bath, NY 14810
(607) 776-7942
Cell #: (607) 731-9302 (do not leave messages)

Bill Richards
44 Water St., Poland, OH 44514
(330) 757-2001
FAX (330)-757-4917

Bill Richards, III
2253 Country Lane
Poland, OH 44514
(330) 755-2620

Mail Bids honored under the following conditions:

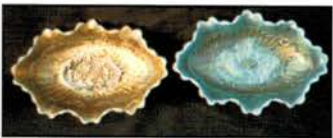
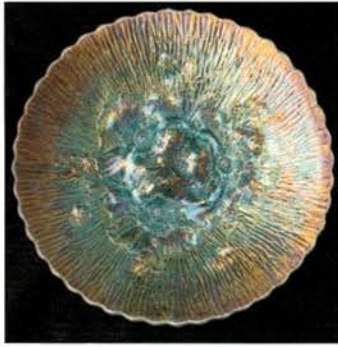
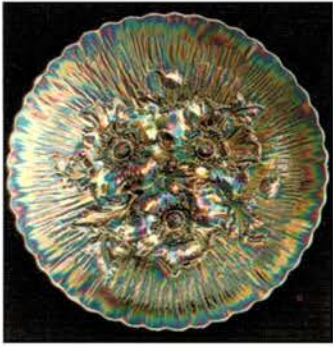
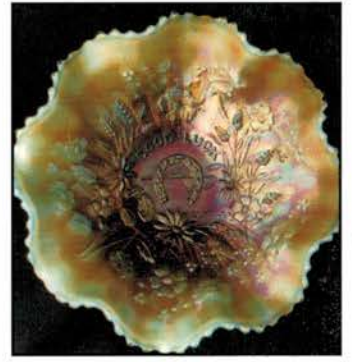
1. No deposit required, Bidders will take full responsibility to honor any and all bids we execute for them. Payment in full plus postage and handling required after notification and before we ship any item to them.
2. Items are bid on in perfect condition with average or above average iridescence OR as listed in the brochures. Bids will not be carried out when damage on an item has been found during the auction. **PEOPLE PRESENT AT AUCTION ARE RESPONSIBLE FOR FINDING ANY PINHEADS, WEAR, SPOTTINESS, MANUFACTURER'S DEFECTS OR ANY OTHER MINOR FLAWS, ETC.**
3. Successful bidders will be notified by collect call from the auctioneer (**so be sure to include the phone number**).
4. Phone inquiries about the glass or any other questions are welcome.
5. If you have some other person at the auction bidding for you, they must pay for the item before taking it.
6. Any terms or conditions given the day of the auction will supersede any previously published information.
7. Mail, e-mail, fax and phone bids are due by Tuesday, March 6, 2001.

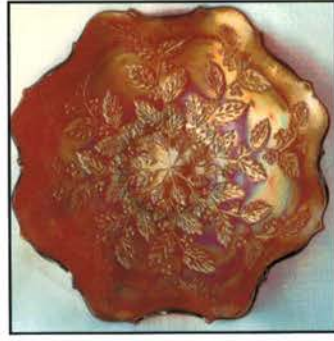
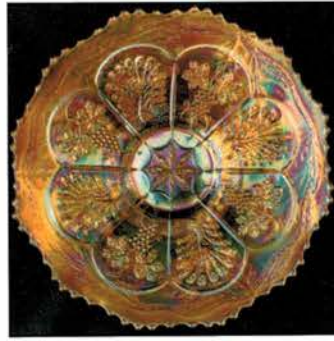
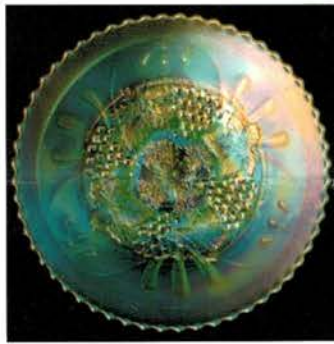
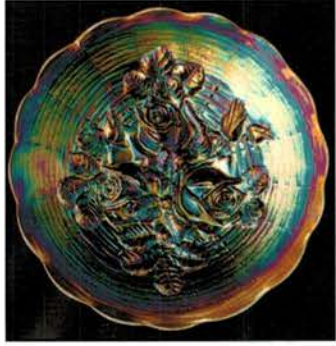
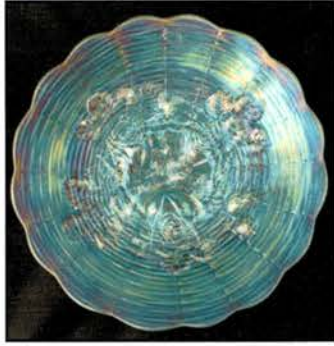
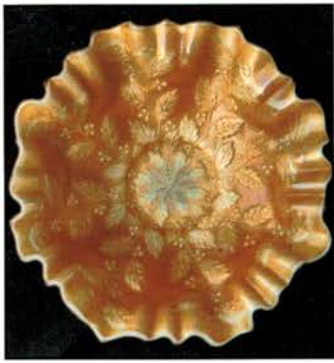
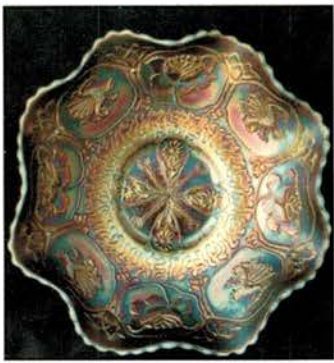
- | | | | |
|-----------------|--|-----------|---|
| _____ 1. | Lot (4) Misc. Hatpins - Dark (all 4 different; selling choice) | _____ 11. | 1700 11" TALL X 4-5/8" BASE N TREE TRUNK MID SIZE SQUATTY VASE - LIME GREEN (EXTREMELY RARE SIZE AND BASE COLOR; ALMOST WANTS TO BE OLIVE GREEN) |
| _____ 2. | Dugan (N'wood) Pastel Swan Master Salt - Blue Opal. (not carnival; scarce w/ nice opal.) | _____ 12. | 12-1/2" Tall x 4-5/8" Base N Tree Trunk Mid Size Swung Vase - Purp. (very scarce; nice shape and has a bright satiny irid.) |
| _____ 3. | (2) N Acorn Burr Handled Punch Cups - Ice Green (very scarce items w/ light irid.; selling choice) | _____ 13. | 1400 17-1/4" TALL X 5-1/4" BASE AND 7-1/2" FLARE N TREE TRUNK SWUNG FUNERAL VASE - PURP. (RARE AND VERY DESIRABLE; COLOR IS NICE AND IRID. GOES FROM GOLDISH TO ELEC. BLUE) |
| _____ 4. | N Acorn Burr 2 Handled Spooner - Purp. (scarce; perfect w/ nice irid.) | _____ 14. | 9-3/4" Tall N Tree Trunk Standard Swung Vase - Dk. Mari. (great color and irid.; a nice dark example) |
| 1025 _____ 5. | N ACORN BURR 7 PC. WATER SET - PURP. (RARE AND DESIRABLE SET; NICE GOLD AND RED HIGHLIGHTS) | _____ 15. | 1400 10" TALL N TREE TRUNK STANDARD SWUNG VASE - AQUA OPAL. (RARE AND VERY DESIRABLE; GREAT IRID. W/ A VERY ATTRACTIVE LOOK) |
| _____ 6. | N Acorn Burr Covered Butter Dish - Green (rarest color; very attractive and tough) | _____ 16. | 11-1/4" Tall N Tree Trunk Standard Swung Vase - Ice Blue (rare and desirable; nice color; irid. is a bit light) |
| _____ 7. | N Acorn Burr Handled Creamer - Green (very scarce part; nice color and irid.) | _____ 17. | 10-3/4" Tall N Leaf Columns Standard Swung Vase - Lime Ice Green (rare and desirable base color; irid. a bit light) |
| _____ 8. | N Round Handled Bushel Basket - Aqua Opal. (scarce; nice opal.; marigold overlay spotty on inside) | _____ 18. | 7-1/2" Tall N Drapery Swung Vase - Ice Green (very scarce; feet in good shape; small tool mark on rib) |
| _____ 9. | N Round Handled Bushel Basket - Ice Green (very scarce; nice color and irid.) | _____ 19. | 8-1/4" Tall N Drapery Swung Vase - White (very scarce w/ good feet; nice irid.) |
| 10060 _____ 10. | 13" TALL X 4-5/8" BASE AND 6-1/2" FLARE N TREE TRUNK MID SIZE SWUNG VASE - MARI./ CUSTARD (OR LUNA) (EXTREMELY RARE AND DESIRABLE N'WOOD ITEM; EXCELLENT COLOR AND IRID.; WHERE DO YA FIND THEM!) | | |

- 2500 20. **N DRAPERY RUFFLED ROSE BOWL – ICE GREEN (EXTREMELY RARE COLOR FOR THIS PATTERN; ONLY A FEW KNOWN)**
- 450 21. **N DRAPERY RUFFLED ROSE BOWL – ICE BLUE (RARE AND DESIRABLE ITEM; NICE COLOR AND IRID.)**
22. N Drapery Ruffled Rose Bowl – Aqua Opal. (a really nice pastel example w/ great irid.)
23. N Drapery Ruffled Rose Bowl w/ Plain Edge – White (a scarce variation; frosty w/ nice irid.)
24. **N DAISY AND PLUME 3 FTD. ROSE BOWL W/ BERRY INT. – ICE GREEN (VERY RARE ITEM IN THIS COLOR; PERFECT W/ DARK COLOR AND NICE IRID.)**
- 3200 25. **12-3/4" TALL X 4-3/4" BASE N THIN RIB MID SIZE SWUNG VASE – AQUA OPAL. (VERY RARE AND EXTREMELY DESIRABLE; PERFECT AND PASTEL; A SUPER EXAMPLE)**
- 1600 26. **14-1/2" TALL X 4-3/4" BASE N THIN RIB MID SIZE SWUNG VASE – SAPPHIRE (VERY RARE AND VERY DESIRABLE; SWUNG TALL W/ NICE DARK COLOR)**
27. 12-7/8" Tall x 4-3/4" Base N Thin Rib Mid Size Swung Vase – White (very scarce w/ nice color and irid.; has spray stain across near top)
28. 11" Tall N Thin Rib Standard Swung Vase – Ice Blue (very scarce; nice color and irid.)
29. N Corn Vase w/ Stalk Base – Ice Green (scarce item; perfect w/ nice irid.)
- 6000 30. **N PEACOCK AT THE FOUNTAIN 6 PC. PUNCH SET – ICE GREEN (EXTREMELY RARE SET; BOWL, BASE AND 1 CUP ARE PERFECT; 3 CUPS AS IS)**
- 5500 31. **N PEACOCK AT THE FOUNTAIN 8 PC. PUNCH SET – WHITE (EXTREMELY DESIRABLE SET TO FIND ANYMORE; PERFECT W/ FROSTY COLOR AND IRID.)**
- 3000 32. **N PEACOCK AT THE FOUNTAIN 11 PC. PUNCH SET – ELEC. BLUE (VERY RARE SET IN THIS COLOR W/ A FEW EXTRA CUPS; REALLY NICE IRID.)**
33. **N PEACOCK AT THE FOUNTAIN 4 PC. PUNCH SET – DK. MARI. (RARE AND VERY DESIRABLE; DARK, DARK COLOR W/ REDDISH IRID.)**
34. (2) N Peacock at the Fountain Handled Punch Cups – Purp. (scarce if ya need em; great irid.; selling choice)
- 1400 35. **N PEACOCK AT THE FOUNTAIN STEMMED RUFFLED COMPOTE – ICE BLUE (RARE AND VERY DESIRABLE; GREAT COLOR AND IRID.)**
- 1500 36. **N PEACOCK AT THE FOUNTAIN STEMMED RUFFLED COMPOTE – ICE GREEN (RARE AND VERY DESIRABLE; GREAT COLOR AND IRID.)**
37. N Peacock at the Fountain Stemmed Ruffled Compote – White (very scarce; frosty w/ light goldish irid.)
- 1900 38. **N PEACOCK AT THE FOUNTAIN STEMMED RUFFLED COMPOTE – BLUE/ ELEC. BLUE (RARE AND VERY DESIRABLE; BRIGHT IRID. AND GREAT DETAIL)**
39. N Peacock at the Fountain Ftd. Ruffled Fruit Bowl – Purp. (rare and desirable w/ great color and irid.)
- 800 40. **N PEACOCK AT THE FOUNTAIN HANDLED WATER PITCHER – WHITE (VERY RARE AND DESIRABLE; FROSTY W/ GREAT IRID.)**
41. N Peacock at the Fountain Tumbler – Elec. Blue (super, super irid.; really nice)
42. (5) N Peacock at the Fountain Tumblers – Purp. (really nice examples; selling so much each for set)
43. N Butterfly Handled Bon Bon w/ Spiral Ext. – Blue/ Elec. Blue (rare and desirable w/ bright blue color)
44. N G & C Handled Bon Bon w/ Basketweave Ext. – Elec. Blue (rare and desirable w/ bright blue color and irid.)
- 5000 45. **N G & C LARGE SIZE FTD. RUFFLED FRUIT BOWL – ICE GREEN (EXTREMELY RARE N'WOOD ITEM; NOT MANY PERFECT EXAMPLES KNOWN; HAS GREAT COLOR AND IRID.)**
46. N G & C Large Size Ftd. Ruffled Fruit Bowl – Purp. (a super example w/ bright multi-colored irid.; bruise chip on bottom of one foot)
- 1200 47. **N G & C SMALL SIZE FTD. RUFFLED FRUIT BOWL – ICE BLUE (EXTREMELY RARE COLOR W/ EXCELLENT IRID.; SUPER!)**
- 525 48. N G & C Small Size Ftd. Ruffled Fruit Bowl – Ice Green (rare and very desirable; has small smoothed spot on one flange)
49. 7-3/4" N G & C Handgrip Plate w/ Basketweave Ext. – Amyth. (very scarce; has a bright satiny finish)
- 2600 50. **N G & C HANDLED COVERED CRACKER JAR – ICE GREEN (EXTREMELY RARE ITEM IN THIS COLOR; A GREAT EXAMPLE; NOT MANY KNOWN)**
- 1000 51. **N G & C HANDLED COVERED CRACKER JAR – WHITE (ANOTHER REALLY TOUGH N'WOOD PASTEL ITEM; NICE AND FROSTY)**
52. N G & C Handled Covered Cracker Jar – Purp. (scarce; has goldish highlights)
53. N G & C 4 Pc. Table Set – Amyth. (nice set w/ an odd amethyst tint; nice irid.)
54. N G & C Tumbler – Purp. (has super irid.)
- 2100 55. **N G & C VARIANT STIPPLED FLARED PLATE W/ RIBBED EXT. – ELEC. BLUE (HAS TO BE ON OF THE BETTER EXAMPLES OF THIS ITEM; SUPER IRID.)**
- 500 56. **N G & C STIPPLED FLARED PLATE W/ RIBBED EXT. – PURP. (RARE VARIATION OF THIS PATTERN W/ A BRONZE LOOK)**
57. **N G & C VARIANT 8 RUFFLED BOWL W/ PLAIN EXT. – PURP. (FOR AN AVAILABLE ITEM THIS HAS TO BE ONE OF THE BEST; HAS ELEC. BLUE HIGHLIGHTS)**
58. N G & C Variant 8 Ruffled Bowl w/ Plain Ext. – Lavender (has a light base color w/ pastel irid.)
59. N G & C Covered Tobacco Jar – Purp. (scarce; top of rim and rim of base are damaged)
- 700 60. **N G & C 2 PC. CANDLE LAMP – GREEN (RARE AND DESIRABLE; NICE SATINY IRID.)**
- 500 61. **N G & C 2 PC. CANDLE LAMP – PURP. (RARE AND DESIRABLE; NICE COLOR AND IRID.)**
- 550 62. **N G & C 2 PC. CANDLE LAMP – MARI. (RARE AND DESIRABLE; NICE SATINY IRID.)**
63. Pair N G & C Candlesticks – Purp. (scarce pair; well matched w/ nice irid.)
64. N G & C Covered Compote – Purp. (scarce and desirable; nice color and irid.)
- 1600 65. **N G & C FTD. CENTERPIECE BOWL – ICE BLUE (RARE W/ NICE DARK COLOR AND IRID.; ATTRACTIVE)**
- 500 66. **N G & C FTD. CENTERPIECE BOWL – WHITE (PROBABLY AS RARE A COLOR AS THERE IS; FROSTY AND NICE)**
- 850 67. **N G & C FTD. OVAL BANANA BOAT – ICE GREEN (RARE AND DESIRABLE; DARK COLOR AND NICE IRID.)**
- 900 68. **N G & C FTD. OVAL BANANA BOAT – ICE BLUE (RARE AND DESIRABLE; DARK COLOR AND NICE)**
69. N G & C Oval Banana Boat – Purp. (nice color but cracked at base)
- 800 70. **N G & C FTD. ROUND FRUIT BOWL W/ STRAIGHT UP POINTS – ICE GREEN (RARE AND DESIRABLE; AN ATTRACTIVE, LARGE N'WOOD PASTEL ITEM)**
- 650 71. **N G & C FTD. HATPIN HOLDER – LAVENDER (RARE BASE COLOR; A BIT LIGHTER W/ SUPER IRID.)**
72. N G & C Ftd. Hatpin Holder – Green (scarce; has a dark bright satiny finish)
73. N G & C Hatpin Holder – Purp. (scarce; has a bright satiny finish)
74. N G & C Hatpin Holder – Dk. Mari. (super example; dark w/ excellent irid.)

- 1100 75. **N G & C LG. ICE CREAM BOWL W/ BASKETWEAVE EXT. – ICE GREEN (VERY RARE AND A VERY DESIRABLE COLOR FOR THIS ITEM; ATTRACTIVE)**
- _____ 76. (2) N G & C Ind. Ice Cream Bowls w/ Basketweave Ext. – Ice Green (quite rare; nice color and irid.; selling choice)
- _____ 77. N G & C Lg. Ice Cream Bowl w/ Basketweave Ext. – Purp. (nice color; has a chip on outside edge)
- _____ 78. **N G & C FTD. PLATE W/ MEANDER EXT. – ICE GREEN (RARE AND VERY DESIRABLE; GREAT BASE COLOR AND IRID.)**
- 960 79. **N G & C STIPPLED BOWL W/ P.C.E. AND RIBBED EXT. – ICE BLUE (RARE AND VERY DESIRABLE; NICE COLOR AND IRID.)**
- 7500 80. **N HEARTS AND FLOWERS STEMMED RUFFLED COMPOTE W/ RIBBED EXT. – MARI./ CUSTARD (EXTREMELY RARE AND VERY DESIRABLE; GREAT BASE COLOR AND SUPER IRID.; ONE OF THE BEST)**
- 1800 81. **N HEARTS AND FLOWERS STEMMED RUFFLED COMPOTE W/ RIBBED EXT. – RENNIGER BLUE (RARE AND DESIRABLE BASE COLOR; NOT MANY AROUND)**
- 1350 82. **N HEARTS AND FLOWERS STEMMED RUFFLED COMPOTE W/ RIBBED EXT. – ICE GREEN (RARE AND DESIRABLE; NICE BASE COLOR AND IRID.)**
- 550 83. **N HEARTS AND FLOWERS STEMMED RUFFLED COMPOTE W/ PLAIN EXT. – ICE BLUE (RARE AND DESIRABLE; NICE COLOR AND IRID.)**
- _____ 84. N Hearts and Flowers Stemmed Ruffled Compote w/ Ribbed Ext. – White (very scarce; nice average color and irid.)
- 850 85. **N HEARTS AND FLOWERS STEMMED RUFFLED COMPOTE W/ RIBBED EXT. – ODD BLUE OPAL. (AN AQUA OPAL. EXAMPLE W/ A DARKER BASE COLOR AND BUTTERSCOTCH OVERLAY)**
- _____ 86. N Hearts and Flowers Stemmed Ruffled Compote w/ Ribbed Ext. – Aqua Opal. (a pastel example w/ nice irid.)
- _____ 87. N Hearts and Flowers 8 Ruffled Bowl w/ Ribbed Ext. – Ice Blue (very scarce w/ pink and blue highlights)
- _____ 88. N Hearts and Flowers 8 Ruffled Bowl w/ Ribbed Ext. – White (very scarce; nice frosty color and irid.)
- 2200 89. **N HEARTS AND FLOWERS BOWL W/ P.C.E. AND RIBBED EXT. – LIME ICE GREEN (EXTREMELY RARE BASE COLOR, SHAPE, AND HAS SUPER IRID.)**
- 3000 90. **N HEARTS AND FLOWERS FLAT PLATE W/ RIBBED EXT. – WHITE (VERY RARE AND VERY DESIRABLE; PERFECT W/ GREAT COLOR AND GOLD IRID.)**
- 3600 91. **N HEARTS AND FLOWERS FLARED PLATE W/ RIBBED EXT. – DK. DK. MARI. (ABSOLUTELY SUPER EXAMPLE; DARK AND PERFECT; WOW!)**
- 1200 92. **N EMBROIDERED MUMS FLARED PLATE W/ RIBBED EXT. – ICE GREEN (RARE AND DESIRABLE; HAS A LIGHTER GOLD IRID.)**
- 950 93. **N EMBROIDERED MUMS 8 RUFFLED BOWL W/ RIBBED EXT. – ICE BLUE OPAL. (VERY RARE ITEM; BLUE BASE COLOR W/ A SILVERY PASTEL FINISH)**
- 650 94. N Embroidered Mums 8 Ruffled Bowl w/ Ribbed Ext. – Ice Blue (rare and desirable; has very light irid.; almost crystal)
- 1700 95. **10-1/2" TALL N DIAMOND POINTS SWUNG VASE – AQUA OPAL. (RARE AND VERY DESIRABLE; BUTTERSCOTCH W/ OPAL. DIAMONDS)**
- _____ 96. 10-1/8" Tall N Diamond Points Swung Vase – Ice Blue (very scarce; a different mold variation; nice color)
- _____ 97. 11" Tall N Diamond Points Odd Swung Vase – Ice Green (very scarce; nice color and irid.; a tough item)
- _____ 98. 10-7/8" Tall N 4 Pillars Swung Vase – Aqua Blue Opal. (base color a bit different; nice opal.)
- _____ 99. 10-1/2" Tall N 4 Pillars Swung Vase – Aqua Opal. (badly chipped foot)
- 1300 100. **5-1/4" TALL N GRACEFUL 6 RUFFLED VASE – ICE BLUE (ONE OF MY FAVORITES; ONLY ICE BLUE EXAMPLE I KNOW OF)**
- _____ 101. **5-1/4" TALL N GRACEFUL 6 RUFFLED VASE – WHITE (ANOTHER OF MY FAVORITES; ONLY WHITE EXAMPLE I KNOW OF)**
- _____ 102. Imperial Flute Toothpick Holder – Lavender (badly damaged)
- _____ 103. Imperial Robin Handled Mug – Odd Mari. (almost wants to be amber)
- _____ 104. Imperial Grape Water Carafe – Purp. (super bright multi-colored example)
- _____ 105. **IMPERIAL LUSTRE ROSE 5 PC. WATER SET – PURP. (RARE AND DESIRABLE; TOUGH TO FIND AND HAS BRIGHT MULTI-COLORED IRID.)**
- 700 106. Imperial Diamond Lace 7 Pc. Water Set – Purp. (very scarce w/ great color and irid.)
- _____ 107. 5" Tall x 9-1/4" Flared Imperial Stretch Console Bowl or Vase – Mari./ Milk Glass (quite a rare Imperial item; great color and stretch effect)
- _____ 108. 4-1/2" Tall x 8-1/4" Flared Imperial Interior Wide Panel Squatty Flared Vase – Mari./ Milk Glass (a very rare shape for this item)
- _____ 109. 8-1/2" Tall Imperial Freehand Flower Vase – Mari./ Milk Glass (scarce item w/ great color and irid.)
- 3000 110. **10-1/2" IMPERIAL HATTIE FLAT CHOP PLATE – AMBER (ABSOLUTELY FANTASTIC ITEM; PERFECT W/ GREAT COLOR AND IRID.)**
- 500 111. **IMPERIAL LOGANBERRY VASE – AMBER (RARE AND VERY DESIRABLE; GREAT COLOR AND IRID.)**
- _____ 112. 5-1/4" Tall x 2-1/2" Base Imperial Wide Panel Interior Miniature Swung Vase – Dk. Mari./ Milk Glass (rare and cute item; great size and irid.; really nice)
- _____ 113. 8" Tall x 2-1/2" Base Imperial Wide Panel Interior Swung Vase – Pastel Mari./ Milk Glass (scarce item w/ a pastel finish)
- _____ 114. 5-1/2" Tall x 2-3/4" Base x 4-3/8" Flare Imperial Spittoon Shaped Urn Vase – Mari./ Milk Glass (signed w/ Iron Cross; great shape and color)
- _____ 115. 9-1/2" Imperial Embossed Scroll Flat Plate – Purp. (flat w/ great multi-colored bright irid.)
- _____ 116. 4" Tall x 6" Wide Imperial Interior Wide Panel 8 Ruffled Rose Bowl – Dk. Mari./ Milk Glass (rare item; a nice dark example; very desirable)
- _____ 117. **9-1/2" M'BURG PEACOCK LG. 6 RUFFLED BOWL – AMYTH. (RADIUM; HAS NO BEE AND NO BEADING; REALLY NICE!)**
- _____ 118. 9-3/4" M'burg Rays and Ribbons Bowl w/ 3 in 1 Edge – Amyth. (radium and nice; has bright reds and blues)
- _____ 119. 10" M'burg Whirling Leaves 6 Ruffled Bowl – Amyth. (very attractive item w/ a nice satiny finish)
- _____ 120. **M'BURG SWIRL HOBNAIL SPITTOON – PURP. (RARE AND VERY DESIRABLE; NICE DARK COLOR AND IRID.)**
- 525 121. **M'BURG SWIRL HOBNAIL WHIMSEY 6 SIDED ROSE BOWL – AMYTH. (A VERY DIFFERENT AND OBVIOUS SHAPE TO THIS ITEM; PERFECT W/ NICE COLOR AND IRID.)**
- _____ 122. M'burg Swirl Hobnail Rose Bowl – Dk. Mari. (very scarce; nice dark color and irid.)
- _____ 123. M'burg Diamonds 7 pc. Water Set – Green (very scarce and well matched set; nice)
- _____ 124. M'burg Boutonniere Stemmed 6 Ruffled Compote – Green (radium and very scarce; has nice bright irid.)
- _____ 125. **M'BURG STRAWBERRY WREATH STEMMED 6 RUFFLED COMPOTE – AMYTH. (SUPER RADIUM EXAMPLE; A BEAUTIFUL ITEM)**
- _____ 126. Cambridge Double Star 7 Pc. Water Set – Green (rare set when complete; great color and irid.)
- _____ 127. Pair Cambridge Inverted Strawberry Candlesticks – Green (very rare pair; both have damaged bases)

- 2000 128. **CAMBRIDGE INVERTED STRAWBERRY TANKARD WATER PITCHER – GREEN (EXTREMELY RARE ITEM; GREAT BASE COLOR AND IRID.)**
129. Cambridge Inverted Strawberry Tumbler – Amyth. (very scarce w/ nice irid.)
- 1750 130. **CAMBRIDGE INVERTED STRAWBERRY TANKARD WATER PITCHER – AMYTH. (VERY RARE AND VERY DESIRABLE; SUPER IRID.)**
131. (2) 7-1/2" N Fruits and Flowers Plates w/ Basketweave Ext. – Green (scarce; satiny finish; selling choice)
- 500 132. **N FRUITS AND FLOWERS STEMMED HANDLED BON BON – AQUA OPAL. (RARE; BASE COLOR A DARKER BLUE W/ BUTTERSCOTCH OVERLAY)**
133. N Fruits and Flowers Stemmed Handled Bon Bon – Ice Blue (rare and desirable w/ pink highlights)
134. N Fruits and Flowers Stemmed Handled Bon Bon – White (rare and desirable item; very underpriced)
- 3600 135. **N THREE FRUITS STIPPLED FLARED PLATE W/ RIBBED EXT. – SAPPHIRE (RARE AND EXTREMELY DESIRABLE; GREAT COLOR; NO WEAR AND ONE OF THE BETTER EXAMPLES)**
- 1250 136. N Three Fruits Stippled Plate w/ Ribbed Ext. – Aqua Opal. (very desirable pastel example; has one repaired point)
- 1100 137. **N THREE FRUITS STIPPLED PLATE W/ RIBBED EXT. – BLACK AMYTH. (RARE ITEM; CAN'T SEE THROUGH IT; HAS BRIGHT MULTI-COLORED IRID.)**
138. N Three Fruits Stippled Plate w/ Ribbed Ext. – Elec. Blue (rare w/ blue highlights; slight wear on fruit)
139. (2) N Three Fruits Plates w/ Plain Ext. – Purp. (2 different styles; both nice; selling choice)
- 1200 140. **N THREE FRUITS MEDALLION STIPPLED FTD. 8 RUFFLED BOWL W/ MEANDER EXT. – ICE GREEN OPAL. (AN EXTREMELY RARE COLOR FOR THIS ITEM; NICE BUTTERSCOTCH OVERLAY)**
141. N Three Fruits Medallion Stippled Ftd. 8 Ruffled Bowl w/ Meander Ext. – White (rare and very desirable; frosty and nice)
142. N Three Fruits Medallion Stippled Ftd. 8 Ruffled Bowl w/ Meander Ext. – Aqua Opal. (pastel and very attractive; nice irid. w/ opal. near edge)
143. N Three Fruits Medallion Stippled Ftd. 8 Ruffled Bowl w/ Meander Ext. – Aqua Opal. (pastel and nice; has over 1" of light opalescence)
144. N Three Fruits Medallion Stippled Ftd. 8 Ruffled Bowl w/ Meander Ext. – Aqua Opal. (pastel w/ a touch of butterscotch; nice opal.)
145. N Three Fruits Medallion Stippled Ftd. 8 Ruffled Bowl w/ Meander Ext. – Aqua Opal. (has butterscotch overlay w/ opal. on tips)
146. **N THREE FRUITS MEDALLION FTD. 8 RUFFLED BOWL W/ MEANDER EXT. – ICE GREEN (SUPER BRIGHT EXAMPLE W/ NO STIPPLING; SUPER COLOR)**
147. N Three Fruits Medallion Stippled Ftd. 8 Ruffled Bowl w/ Meander Ext. – Ice Blue (rare item; nice base color w/ light irid.)
148. N Three Fruits Plate w/ Basketweave Ext. – Green (a really bright example; really nice)
149. 8" N Sunflower Deep Ftd. 8 Ruffled Bowl w/ Meander Ext. – Ice Blue (an extremely rare and desirable item; chipped on edge)
150. **(2) N DAISY AND DRAPE FTD. FLARED VASES – AQUA OPAL. (BOTH ARE NICE BUTTERSCOTCH EXAMPLES; SELLING CHOICE)**
151. N Fine Cut and Roses Ftd. Ruffled Rose Bowl w/ Fancy Int. – Aqua Opal. (rare and desirable item; has sliver off one foot)
152. N Fine Cut and Roses Ftd. Ruffled Rose Bowl w/ Fancy Int. – White (very scarce; nice color and irid.)
153. N Fine Cut and Roses Ftd. Ruffled Rose Bowl w/ Fancy Int. – Ice Blue (very scarce; nice color and irid.)
154. N Fine Cut and Roses Ftd. Ruffled Rose Bowl w/ Fancy Int. – Lt. Ice Blue (scarce; nice color and irid.)
- 2700 155. **N STRAWBERRY STIPPLED 8 RUFFLED BOWL W/ RIBBED EXT. – LIME ICE GREEN (RARE AND VERY DESIRABLE; SUPER IRID. AND BASE COLOR)**
156. N Strawberry Plate w/ Basketweave Ext. – Green (very scarce; nice satiny example)
157. N Strawberry Plate w/ Plain Ext. – Dk. Mari. (great color and irid.; a really nice example)
158. N Beaded Cable Ftd. Ruffled Rose Bowl – Aqua Opal. (rare and desirable; a nice pastel example)
159. N Beaded Cable Ftd. Ruffled Rose Bowl – Aqua Opal. (a butterscotch example w/ opal. on edge)
160. **N BEADED CABLE FTD. RUFFLED ROSE BOWL – ICE BLUE (RARE AND VERY DESIRABLE; REALLY NICE)**
161. N Beaded Cable Ftd. Ruffled Rose Bowl – Ice Green (rare and desirable; has damage on one foot)
162. N Beaded Cable Ftd. Ruffled Rose Bowl – White (very scarce; frosty w/ nice irid.)
163. N Beaded Cable Ftd. Ruffled Rose Bowl – Blue (a dark example; nice color and irid.)
164. European Classic Arts Rose Bowl – Mari./ Decor. (rare item w/ nice green decoration)
- 1700 165. **U.S. GLASS COSMOS AND CANE TANKARD WATER PITCHER – WHITE (EXTREMELY RARE AND VERY DESIRABLE; GREAT COLOR AND IRID.; REALLY NICE)**
166. U.S. Glass Cosmos and Cane Tumbler – White (very scarce w/ great color and irid.)
167. U.S. Glass Cosmos and Cane Rose Bowl w/ Headdress Ext. – Mari. (rare item not often sold; nice color)
- 700 168. **U.S. GLASS PALM BEACH BULBOUS PINCHED TOP VASE – PEARLIZED MILK GLASS (EXTREMELY RARE ITEM W/ A PEARLIZED OVERLAY)**
169. Phoenix Glass Co. Lacy Dewdrop Small Covered Compote – Mari./ Milk Glass (rare covered item; really nice mari. overlay)
- 1800 170. **DUGAN HEAVY IRIS TANKARD WATER PITCHER – WHITE (EXTREMELY RARE ITEM; PERFECT W/ GREAT IRID.)**
171. Dugan Heavy Iris Tumbler – White (great example; enam. "Souvenir Arcadia, Neb.")
172. Dugan Heavy Iris Tankard Water Pitcher and Tumbler – Mari. (scarce item w/ nice color and irid.)
173. Dugan Heavy Iris Tumbler – Dk. Mari. (super example w/ pink and blue irid.)
174. (2) Dugan Heavy Iris Tumblers – Amyth. (selling choice; have bright satiny finish)
- 500 175. **DUGAN THUMBPRINT STRETCH STEMMED 8 RUFFLED COMPOTE – COBALT BLUE (EXTREMELY RARE AND VERY DESIRABLE; GREAT COLOR AND IRID.)**
- 500 176. **DUGAN THUMBPRINT STRETCH STEMMED 8 RUFFLED COMPOTE – CELESTE BLUE (ANOTHER VERY RARE AND DESIRABLE ITEM; GREAT COLOR)**
- 700 177. 11-1/2" Tall Dugan Big Basketweave Swung Vase – Ice Blue (rare and very desirable; great color and irid.)
178. 10-1/2" Tall Dugan Big Basketweave Swung Vase – White (very scarce; frosty w/ great color and irid.)
179. 10" Tall Dugan Lined Lattice Swung Vase – White (frosty w/ great irid.)
180. **DUGAN GRAPE ARBOR LG. ROUND FTD. FRUIT BOWL W/ I.F.F. EXT. – BLUE (EXTREMELY RARE BASE COLOR; TERRIBLY TOUGH TO FIND)**
181. Dugan Grape Delight 6 Ftd. Rose Bowl – Purp. (nice color and irid. w/ good feet)
182. Dugan Honeycomb Rose Bowl – P. Opal. (nice color but cracked along base)
183. Dugan Wreath of Roses Rose Bowl – Mari. (nice satiny color)
184. Dugan Banded Shell Handled Mug – Purp. (really nice irid.)





- _____ 185. **DUGAN HERON HANDLED MUG – PURP. (RARE AND DESIRABLE; GREAT IRID. AND DETAIL)**
- _____ 186. 11" Dugan Persian Garden Lg. Ice Cream Bowl – White (very scarce w/ average irid.)
- _____ 187. Dugan Jeweled Heart Tumbler – Dk. Mari. (super color and irid.)
- _____ 188. Dugan Rambler Rose Bulbous Water Pitcher – Amyth. (very scarce w/ a radium type irid.)
- _____ 189. Dugan Rambler Rose Tumbler – Amyth. (nice satiny irid.)
- _____ 190. **DUGAN PASTEL SWAN MASTER SALT – PURP. (RARE AND DESIRABLE; PERFECT W/ GREAT COLOR)**
- _____ 191. 9" Dugan Fanciful Flat Plate – Amyth. (rare item w/ a really nice satiny finish)
- _____ 192. **8-3/4" DUGAN FANCIFUL FLAT PLATE – P. OPAL. (VERY RARE AND VERY DESIRABLE; GREAT OPAL. AND OVERLAY)**
- _____ 193. 8-1/2" Dugan Fanciful Low 10 Ruffled Plate – P. Opal. (scarce; nice opal. and average irid.)
- _____ 194. 9" Dugan Apple Blossom Twigs Flat Plate – P. Opal. (very scarce; nice opal and overlay)
- _____ 195. **8-1/2" DUGAN ROUND UP LOW ICE CREAM SHAPED BOWL – PURP. (A SUPER COLORED ITEM W/ BRIGHT MULTI-COLORED IRID.)**
- _____ 196. 8-1/2" Dugan Round Up Flat Plate – Blue (very scarce and nice; has a satiny finish)
- _____ 197. 8-1/2" Dugan Round Up Low Ruffled Bowl/ Plate – P. Opal. (average color w/ nice opal.)
- _____ 198. 8" Dugan Round Up I.C. Shaped Bowl – P. Opal. (average color w/ nice opal.)
- _____ 199. 6" Dugan Ribbed Interior/ J.H. Ext. Crimped Edge Plate – P. Opal. (scarce item; nice irid. and great opal.)
- _____ 200. **DUGAN BORDER PLANTS DOMED HANDGRIP PLATE – P. OPAL. (RARE AND VERY DESIRABLE; GREAT COLOR AND OPAL)**
- _____ 201. 8-3/4" Dugan Windflower Flat Plate – Blue (very scarce item; flat w/ a satiny irid.)
- _____ 202. (2) 6-1/2" Dugan Four Flowers Flat Plate – P. Opal. (really flat w/ great color and opal.; selling choice)
- _____ 203. 9-1/2" Dugan Cherries 6 Ruffled Bowl w/ J.H. Ext. – Dk. P. Opal. (scarce item; nice shape, opal. and color)
- _____ 204. Dugan Starfish Stemmed 8 Ruffled Compote – Dk. P. Opal. (super example w/ great color and opal.)
- _____ 205. Dugan Open Opals Stemmed Tri-Cornered Crimped Edge Compote – Dk. P. Opal. (another really nice item to end the first session)

START OF SECOND SESSION

- _____ 206. Westmoreland Concave Flute Rose Bowl – Amyth. (very scarce item in this color; sorta radium)
- _____ 207. Westmoreland Smooth Panels Stemmed 6 Ruffled Compote – Mari./ Milk Glass (very scarce; great irid. and base color)
- _____ 208. Westmoreland 270 6 Ruffled Compote – Blue Opal. (odd w/ 6 ruffles; very scarce item)
- _____ 209. Westmoreland 270 I.C. Shaped Compote – Dk. Mari./ Milk Glass (super example; great color and overlay)
- _____ 210. **WESTMORELAND CORINTH J.I.P. VASE – BLUE OPAQUE (RARE AND VERY DESIRABLE; GREAT BASE COLOR)**
- _____ 211. Westmoreland Corinth J.I.P. Vase – Mari./ Moonstone (very scarce item in this color; nice)
- _____ 212. 8-3/4" Tall Westmoreland Corinth Swung Vase – Mari./ Milk Glass (very scarce item in this color; really nice)
- _____ 213. 8-1/2" Westmoreland Scales 6 Ruffled Bowl – Blue Opal. (rare and desirable; nice color and opal.)
- _____ 214. 8-1/2" Westmoreland Scales 6 Ruffled Bowl – Mari./ Milk Glass (very scarce item; nice color and irid.)
- _____ 215. **8-1/4" WESTMORELAND CAROLINA DOGWOOD 6 RUFFLED BOWL – BLUE OPAL./ OPAQUE BASE (VERY ATTRACTIVE ITEM; NICE COLOR AND IRID.)**

- _____ 216. 8-1/2" Westmoreland Carolina Dogwood 6 Ruffled Bowl – Mari./ Moonstone (very scarce; nice color and irid.)
- _____ 217. 8-1/2" Westmoreland Smooth Rays 6 Ruffled Bowl – Mari./ Milk Glass (very scarce w/ really nice irid.)
- _____ 218. N Beaded Cable Ftd. Ruffled Rose Bowl – Mari. (forgot this one earlier; still really nice)
- _____ 219. 7-1/2" N Wild Strawberry Handgrip Plate w/ Basketweave Ext. – Purp. (very scarce and desirable; nice bright satiny finish)
- 6000 220. **N DANDELION 7 PC. TANKARD WATER SET – ICE BLUE (AN EXTREMELY RARE, PERFECT SET; NOT MANY HAVE EVER BEEN SOLD)**
- _____ 221. N Dandelion Tumbler – White (excellent example; great color and super irid.)
- 800 222. **N DANDELION TANKARD WATER PITCHER – GREEN (RARE AND VERY DESIRABLE W/ GOLDISH HIGHLIGHTS)**
- _____ 223. N Dandelion Tumbler – Green (super example; great color and irid.)
- 1700 224. **N DANDELION 7 PC. TANKARD WATER SET – PURP. (ABSOLUTELY SUPER SET; ONE OF THE BETTER EXAMPLES)**
- 750 225. N Dandelion Handled Mug w/ Knight's Templar Adv. – Ice Blue (very rare and desirable; irid. a bit silvery)
- _____ 226. **N DANDELION HANDLED MUG – AQUA OPAL. (RARE AND DESIRABLE; NICE OPAL. AND OVERLAY)**
- _____ 227. N Dandelion Handled Mug – Purp. (scarce item w/ nice average color and irid.)
- _____ 228. N Wishbone Bulbous Water Pitcher – Purp. (very rare and very desirable pattern; tiny chip on edge)
- _____ 229. N Grape Arbor 6 Ruffled Hat – Ice Green (rare and very desirable; great color and irid.)
- 950 230. **N GRAPE ARBOR 7 PC. TANKARD WATER SET – ICE BLUE (RARE TO FIND A COMPLETE SET; WELL MATCHED W/ GREAT COLOR AND IRID.)**
- _____ 231. **N GRAPE ARBOR TANKARD WATER PITCHER – WHITE (RARE AND DESIRABLE; FROSTY W/ NICE COLOR AND IRID.)**
- _____ 232. N Grape Arbor Tumbler – White (scarce; frosty w/ goldish irid.)
- 500 233. **N GRAPE ARBOR TANKARD WATER PITCHER – ODD AMYTH. (RARE AND VERY DESIRABLE; HAS AN ODD LIGHTER TINT W/ GREAT IRID.)**
- _____ 234. N Grape Arbor Tumbler – Etched "Victor Roney Born April 1904" – Purp. (very interesting item w/ etching; great irid.)
- 1100 235. **N GREEK KEY TANKARD WATER PITCHER – GREEN (RARE AND VERY DESIRABLE; GREAT COLOR W/ GOLDISH/ RED IRID.)**
- _____ 236. N Greek Key Tumbler – Green (very scarce; really nice color and irid.)
- _____ 237. **N NIPPON BOWL W/ P.C.E. AND RIBBED EXT. – DK. ICE BLUE (SUPER EXAMPLE W/ BRIGHT PINK HIGHLIGHTS)**
- _____ 238. N Nippon Bowl w/ P.C.E. and Ribbed Ext. – Ice Blue (another nice example; scarce w/ multi-colored irid.)
- _____ 239. N Nippon 8 Ruffled Bowl w/ Basketweave Ext. – Green (very scarce; has a mari. overlay; stain on face)
- 2400 240. **N LEAF AND BEADS FTD. ROSE BOWL – ICE GREEN OPAL. (EXTREMELY RARE AND VERY DESIRABLE; SUPER EXAMPLE THAT'S IMPOSSIBLE TO FIND)**
- 1600 241. **N LEAF AND BEADS FTD. ROSE BOWL – ICE GREEN (VERY RARE ITEM; PERFECT W/ NICE COLOR AND IRID.)**
- 1600 242. **N LEAF AND BEADS FTD. ROSE BOWL – ICE BLUE (VERY RARE ITEM; PERFECT W/ NICE COLOR AND IRID.)**
- 950 243. N Leaf and Beads Ftd. Rose Bowl – White (very rare item; perfect w/ nice color and irid.)
- 6000 244. **N LEAF AND BEADS FTD. ROSE BOWL – AQUA OPAL. (A PASTEL EXAMPLE ANYONE WOULD WANT; SUPER!)**

- _____ 245. N Leaf and Beads Ftd. Rose Bowl – Aqua Opal. (rare and desirable; nice color and irid.)
- _____ 246. N Leaf and Beads Ftd. Rose Bowl – Blue (very scarce; almost wants to be a different color)
- 2600 247. **N LEAF AND BEADS FTD. ROSE BOWL W/ FLORAL INT. – ICE BLUE (EXTREMELY RARE W/ THE INTERIOR PATTERN; ONLY ONE I KNOW OF; NICE)**
- 1700 248. **N LEAF AND BEADS FTD. ROSE BOWL W/ FLORAL INT. – SAPPHIRE (ANOTHER EXTREMELY RARE COLOR; VERY ATTRACTIVE W/ NICE IRID.)**
- _____ 249. N Leaf and Beads Ftd. Rose Bowl w/ Floral Int. – Mari. (a nice satiny example)
- _____ 250. **FENTON HORSEHEAD MEDALLION FTD. ROSE BOWL – SAPPHIRE (EXTREMELY RARE BASE COLOR; A TOUGHIE; HAS A MANUF. CHECK ON MOLD LINE OF COLLAR BASE)**
- _____ 251. Fenton Horsehead Medallion Ftd. Rose Bowl – Powder Blue/ Mari. (very rare base color w/ a light marigold overlay)
- _____ 252. Fenton Horsehead Medallion Ftd. Rose Bowl – Mari./ Vaseline (very rare and desirable base color w/ a light marigold overlay)
- _____ 253. Fenton Horsehead Medallion Ftd. Rose Bowl – Blue (very scarce w/ great color and detail; really nice)
- _____ 254. Fenton Horsehead Medallion J.I.P. Ftd. Bowl – Teal/ Green (scarce green item that has a bit of a different tint)
- _____ 255. **FENTON FLOWERS FTD. ROSE BOWL – MARI./ VASELINE (VERY RARE ITEM NOT OFTEN SOLD; PERFECT W/ NICE BASE COLOR AND LIGHT OVERLAY)**
- _____ 256. Fenton Flowers Ftd. Rose Bowl – White (rare and desirable item w/ perfect feet and nice irid.)
- _____ 257. Fenton Flowers Ftd. Rose Bowl – Green (rare base color; has a chip on tip of one toe)
- _____ 258. **FENTON PERSIAN MEDALLION ROSE BOWL – GREEN (AN EXTREMELY RARE COLOR FOR THIS PATTERN AND SHAPE)**
- _____ 259. 6" Fenton Persian Medallion Plate – Mari. (average item)
- 1900 260. **FENTON TEN MUMS TANKARD WATER PITCHER – WHITE (ANOTHER EXTREMELY RARE ITEM TO LOCATE; FROSTY W/ LIGHT PINKS AND YELLOWS)**
- _____ 261. Fenton Ten Mums Tumbler – White (matches above item; rare w/ nice color and irid.)
- _____ 262. 9-1/2" Fenton Ten Mums Bowl w/ 3 in 1 Edge – Blue (very scarce; nice color and satiny irid.)
- _____ 263. 6-1/2" Fenton Lions I.C. Shaped Bowl – Dk. Mari. (scarce; really nice color and detail)
- _____ 264. 7" Fenton Lions 6 Ruffled Bowl – Mari. (scarce w/ average irid. and nice detail)
- 3500 265. **FENTON ORANGE TREE SCROLL TANKARD WATER PITCHER – BLUE (VERY RARE ITEM W/ PROBABLY THE BEST IRID. I'VE SEEN ON ONE)**
- _____ 266. Fenton Orange Tree Scroll Tumbler – Blue (scarce; really nice color and irid.)
- 1500 267. **FENTON ORANGE TREE ORCHARD 7 PC. WATER SET – BLUE (VERY RARE SET TO FIND COMPLETE; SUPER IRID.)**
- _____ 268. Fenton Orange Tree Handled Loving Cup – Blue (rare and desirable; perfect w/ nice irid.)
- _____ 269. Fenton Orange Tree Ftd. Hatpin Holder – Blue (scarce item; nice color and pretty good feet)
- _____ 270. 9-1/2" Fenton Orange Tree Flat Plate – Blue (very scarce; has average color and irid.)
- _____ 271. Fenton Orange Tree Standard Flared Mug – Mari./ Vaseline (great base color and overlay; fair detail)
- _____ 272. Fenton Orange Tree Standard Flared Mug – Blue (satiny irid.)
- _____ 273. Fenton Persian Medallion Lg. 6 Ruffled Crimped Edge Stemmed Compote – Mari. (nice color and irid.)
- _____ 274. 10" Tall Fenton Diamond Rib Swung Vase – White (very scarce color for this item; frosty and nice)
- _____ 275. **FENTON STRETCH "PETAL" ROSE BOWL – CELESTE BLUE (VERY RARE SHAPE AND COLOR FOR THIS ITEM; REALLY NEAT)**
- _____ 276. Fenton 2 Row Open Edge 4 Sided Square Hat – Ice Blue (very scarce and very desirable; great irid.)
- _____ 277. Fenton 2 Row Open Edge 6 Ruffled Hat – Ice Green (very scarce and very desirable; great irid.)
- _____ 278. Fenton 3 Row Open Edge 2 Sided Hat on Metal Base – Celeste Blue (rare and desirable item; open lattice is damaged)
- _____ 279. Fenton 2 Row Open Edge Blackberry 2 Sided Hat – Mari./ Vaseline (actually quite a rare base color for this item)
- 1600 280. **8-1/4" FENTON ORANGE TREE I.C. SHAPED BOWL – RED (VERY RARE AND VERY DESIRABLE; SUPER COLOR W/ A GREAT SATINY FINISH)**
- 1200 281. **8-1/2" FENTON PEACOCK AND GRAPE I.C. SHAPED BOWL – RED (ANOTHER RARE AND VERY DESIRABLE ITEM; GREAT COLOR AND SATINY IRID.)**
- 1000 282. **9" FENTON HOLLY 8 RUFFLED BOWL – RED (RARE AND VERY DESIRABLE; HAS BRIGHT COLOR AND IRID.)**
- 800 283. **8-3/4" FENTON DRAGON AND LOTUS 8 RUFFLED BOWL – RED (RARE AND VERY DESIRABLE; SATINY IRID. AND REALLY DARK COLOR)**
- _____ 284. 6-1/4" Fenton Sailboats 6 Ruffled Sauce – Red (one of the better examples I've seen; satiny w/ great detail)
- 1000 285. **FENTON HORSEHEAD MEDALLION FTD. NUT BOWL – RED (RARE AND VERY DESIRABLE; HAS SLIGHT SLAG EFFECT W/ REALLY NICE COLOR AND IRID.)**
- 1050 286. **6" FENTON PANTHER FTD. 6 RUFFLED SAUCE W/ B & B EXT. – REVERSE AMBERINA (RARE AND DESIRABLE; AN EXCELLENT ITEM IN A RARE COLOR)**
- 1200 287. **9-1/2" TALL FENTON BUTTERFLY AND BERRY SWUNG VASE – RED (VERY RARE AND PERFECT; ONE OF THE BEST EXAMPLES I'VE SEEN IN QUITE A WHILE)**
- _____ 288. 10" Tall Fenton Fine Rib Swung Vase – Red (very scarce and desirable w/ nice color)
- 500 289. Fenton Blackberry 2 Row Open Edge 4 Sided Square Hat – Red (very scarce; nice satiny color and irid.)
- 900 290. **FENTON HOLLY STEMMED 6 RUFFLED COMPOTE – RED (RARE AND VERY DESIRABLE; HAS BRIGHT COLOR AND IRID.)**
- 600 291. **FENTON ORANGE TREE HANDLED SHAVING MUG – RED SLAG (RARE AND VERY DESIRABLE; SUPER BASE COLOR; SATINY)**
- _____ 292. **FENTON PERSIAN MEDALLION 2 HANDLED BON BON – RED (RARE AND VERY DESIRABLE; DARK COLOR AND SATINY IRID.)**
- _____ 293. 7-1/2" Fenton G & C Low 8 Ruffled Bowl – Red (rare and desirable; dark color and satiny irid.)
- 650 294. 7" Fenton Leaf Chain 6 Ruffled Bowl – Red (very rare and desirable; dark color and satiny irid.)
- _____ 295. Fenton Blackberry Spray 6 Ruffled Hat – Red (an excellent satiny example that looks red)
- 1100 296. **6" FENTON LOTUS AND POINSETTIA BALL FTD. 6 RUFFLED SAUCE – REVERSE AMBERINA OPAL. (VERY RARE AND VERY DESIRABLE; A SUPER ITEM)**
- _____ 297. 6" Fenton Two Flowers Ball Ftd. 6 Ruffled Sauce – Aqua (scarce base color for this pattern)
- _____ 298. **FENTON PRAYER RUG 2 HANDLED 4 SIDED BON BON – MARI./ CUSTARD (RARE AND VERY DESIRABLE; NICE LIGHTER OVERLAY)**
- _____ 299. Fenton Rose Spray Stemmed J.I.P. Compote – Ice Green (very scarce; great base color and irid.)

- 700 300. FENTON ENAMELED DIANTHUS/ PRISM BAND 7 PC. TANKARD WATER SET – ICE GREEN (VERY RARE AND VERY DESIRABLE; ESP. TO FIND COMPLETE; HAS GREAT COLOR AND DECORATION)
- _____ 301. FENTON ENAMELED DIANTHUS/ PRISM BAND TANKARD PITCHER AND 2 TUMBLERS – WHITE (RARE AND VERY DESIRABLE; SUPER COLOR AND ENAMELED DECOR.)
- 600 302. FENTON ENAMELED SHASTA DAISY/ ZIG ZAG BULBOUS WATER PITCHER – ICE GREEN (RARE AND DESIRABLE W/ GREAT COLOR AND IRID.)
- _____ 303. Fenton Enameled Shasta Daisy/ Zig Zag Bulbous Water Pitcher – White (rare and desirable w/ great color and irid.)
- _____ 304. 9" Fenton Captive Rose Flat Plate – Blue (nice item but has a chunk out of the edge)
- 1600 305. FENTON BLUEBERRY 7 PC. BULBOUS WATER SET – BLUE (RARE AND VERY DESIRABLE SET; WELL MATCHED AND NICE)
- 950 306. FENTON FLUFFY PEACOCK 7 PC. BULBOUS WATER SET – BLUE (RARE AND VERY DESIRABLE SET; GREAT COLOR AND IRID.)
- _____ 307. Fenton Fluffy Peacock Tumbler – Blue (very scarce; a goldish example)
- 1000 308. FENTON FLUFFY PEACOCK 7 PC. BULBOUS WATER SET – AMYTH. (RARE AND VERY DESIRABLE; SUPER COLOR AND IRID.)
- _____ 309. Fenton Paneled Dandelion 7 Pc. Tankard Water Set – Amyth. (very scarce set; all pieces well matched)
- 2100 310. FENTON MILADY TANKARD WATER PITCHER – BLUE (RARE ITEM; PERFECT W/ A NICE SATINY IRID.)
- _____ 311. Fenton Milady Tumbler – Blue (scarce; nice irid.)
- 850 312. FENTON MILADY 5 PC. TANKARD WATER SET – MARI. (RARE SET; NICE; AVERAGE COLOR AND IRID.; WELL MATCHED)
- 600 313. Fenton Blackberry Block 5 Pc. Tankard Water Set – Blue (rare set; pitcher is a bit silvery)
- 600 314. FENTON BLACKBERRY BLOCK 7 PC. TANKARD WATER SET – MARI. (RARE SET; SATINY IRID.; TOUGH TO FIND COMPLETE)
- 2375 315. 9" FENTON DRAGON AND LOTUS 8 RUFFLED BOWL – AQUA OPAL. (AN EXTREMELY RARE FENTON ITEM NOT SOLD FOR A WHILE; SUPER SATINY W/ OPAL. ON EDGE)
- 750 316. FENTON BLACKBERRY SPRAY CRIMPED EDGE J.I.P. HAT – AQUA OPAL. (VERY RARE AND EXTREMELY DESIRABLE; SUPER COLOR, SHAPE AND OPAL.)
- _____ 317. 7-1/4" Fenton Vintage Grape 6 Ruffled Bowl – Aqua Opal. (rare item; rare size; nice opal.; average irid.)
- _____ 318. 10-1/2"-11" FENTON STAG AND HOLLY LG. BALL FTD. 8 RUFFLED BOWL – MARI./ AQUA (RARE AND VERY DESIRABLE; GREAT BASE COLOR AND HEAVY MARI. OVERLAY)
- _____ 319. Fenton Holly 6 Ruffled Hat – Dk. Mari./ Moonstone (quite a rare color for this item; a nice dark example)
- 1150 320. 9" FENTON HOLLY BOWL W/ 3 IN 1 EDGE – DK. MARI./ MOONSTONE (VERY RARE AND DESIRABLE ITEM; SUPER COLOR AND OVERLAY)
- 800 321. 9-9-1/4" FENTON HOLLY 8 RUFFLED BOWL – DK. MARI./ MOONSTONE (ANOTHER SUPER ITEM W/ GREAT COLOR AND OVERLAY)
- 500 322. 8-3/4" FENTON DRAGON AND LOTUS 8 RUFFLED BOWL – LIME GREEN OPAL. (RARE AND VERY DESIRABLE PASTEL EXAMPLE; SUPER!)
- _____ 323. 9" Fenton Peacock and Grape Bowl w/ 3 in 1 Edge – Lime Green Opal. (rare and desirable; great shape and light irid.)
- _____ 324. FENTON STRAWBERRY 2 HANDLED 4 SIDED BON BON – VASELINE OPAL. (RARE ITEM IN THIS COLOR; SUPER OPAL.)
- 1800 325. N POPPY SHOW FLARED PLATE – BLUE/ ELEC. BLUE (VERY RARE AND DESIRABLE; ONE OF THE BETTER PLATES IN THE AUCTION)
- 2400 326. N POPPY SHOW FLAT PLATE – ICE BLUE (EXCELLENT EXAMPLE; NICE COLOR W/ PINK HIGHLIGHTS)
- 600 327. N Poppy Show Flared Plate – Mari. (rare and desirable w/ above average color and irid.)
- 3100 328. N ROSE SHOW FLARED PLATE – EMERALD GREEN (EXTREMELY RARE COLOR W/ BRIGHT HIGHLIGHTS AND A SMALL CHIP ON ONE ROSE)
- 1000 329. N ROSE SHOW FLARED PLATE – PURP. (A REALLY BRIGHT MULTI-COLORED EXAMPLE OF THIS SCARCE COLOR)
- 500 330. N Rose Show Flared Plate – Blue (rare item; has a satiny finish)
- 1000 331. N ROSE SHOW FLAT PLATE – DK. MARI. (SUPER DARK EXAMPLE; ONE OF THE BETTER EXAMPLES YOU'LL SEE)
- 1000 332. N ROSE SHOW FLARED PLATE – ICE GREEN (RARE AND VERY DESIRABLE; MULTI-COLORED W/ GOLDISH HIGHLIGHTS)
- 575 333. N Rose Show Flat Plate – Ice Blue (one of the best there is but has a chip on one rose)
- _____ 334. N Rose Show Flared Plate – White (rare; pretty nice example of this color)
- 900 335. N ROSE SHOW 8 RUFFLED BOWL – ICE BLUE OPAL. (RARE BASE COLOR; REALLY PASTEL W/ LIGHT IRID.)
- 500 336. N ROSE SHOW 8 RUFFLED BOWL – AQUA OPAL. (RARE AND DESIRABLE W/ JUST A HINT OF MARI.)
- 600 337. N Rose Show 8 Ruffled Bowl – Aqua Opal. (rare and desirable; nice above average example)
- 700 338. N Rose Show 8 Ruffled Bowl – Lt. Ice Blue (rare and desirable; light color and irid.)
- _____ 339. N Rose Show 8 Ruffled Bowl – White (very scarce and very desirable; nice and frosty)
- 3000 340. N GOOD LUCK 8 RUFFLED BOWL W/ RIBBED EXT. – AQUA OPAL. (VERY RARE AND DESIRABLE; AN EXCELLENT BUTTERSCOTCH EXAMPLE)
- _____ 341. N Good Luck 8 Ruffled Bowl w/ Basketweave Ext. – Purp. (scarce; a nice bright satiny example)
- _____ 342. N Good Luck Stippled 8 Ruffled Bowl w/ Narrow Base and Ribbed Ext. – Blue (rare and desirable; great color w/ nice irid.)
- _____ 343. N Good Luck Bowl w/ P.C.E. and Ribbed Ext. – Elec. Blue (a super blue example; edge has some manuf. flaws)
- _____ 344. (6) N Raspberry Tumblers – Purp. (super examples; selling so much each for set)
- 1100 345. N RASPBERRY HANDLED WATER PITCHER – WHITE (AN EXTREMELY RARE N'WOOD ITEM; PERFECT W/ GREAT FROSTY COLOR AND SUPER IRID.)
- _____ 346. N Raspberry Handled Water Pitcher – Green (very scarce item; has nice bright satiny irid.)
- _____ 347. N Raspberry Tumbler – Emerald Green (super bright example)
- 800 348. N POPPY OVAL RUFFLED PICKLE TRAY W/ RIBBED EXT. – AQUA OPAL. (VERY RARE AND VERY DESIRABLE; BUTTERSCOTCH W/ LIGHT IRID.)
- 600 349. N POPPY OVAL RUFFLED PICKLE TRAY W/ RIBBED EXT. – ICE BLUE OPAL. (RARE AND VERY DESIRABLE; REALLY PASTEL W/ LIGHT IRID.)
- 1050 350. N PEACOCKS 8 RUFFLED BOWL W/ RIBBED EXT. – AQUA OPAL. (RARE AND DESIRABLE PASTEL EXAMPLE; ETCHED "BELLE F. 1913")

- 900 351. N Peacocks 8 Ruffled Bowl w/ Ribbed Ext. – Aqua Opal. (rare and desirable pastel example w/ a bright yellow irid.)
- 900 352. N Peacocks 8 Ruffled Bowl w/ Ribbed Ext. – Aqua Opal. (rare item; a cross between pastel and butterscotch; opal. near edge)
- 1000 353. N Peacocks 8 Ruffled Bowl w/ Ribbed Ext. – Aqua Opal. (rare item; a nice butterscotch example w/ pastel opal. on the edge)
- 950 354. **N PEACOCKS 8 RUFFLED BOWL W/ RIBBED EXT. – AQUA OPAL. (RARE AND DESIRABLE; ONE OF THE BETTER BUTTERSCOTCH EXAMPLES I'VE SEEN)**
- 200 355. N Peacocks 8 Ruffled Bowl w/ Ribbed Ext. – Aqua Opal. (rare item; looks to have pastel tips while the rest has a nice butterscotch overlay)
356. N Peacocks 8 Ruffled Bowl w/ Ribbed Ext. – Aqua Opal. (rare; a nice butterscotch example w/ light opal. on the tips)
- 600 357. N Peacocks 8 Ruffled Bowl w/ Ribbed Ext. – Light Ice Blue (rare item; light in color and irid.)
- 850 358. N Peacocks Stippled Bowl w/ P.C.E. and Ribbed Ext. on a Narrow Base – Odd Cobalt Blue (rare and very desirable; great shape and irid.)
- 1000 359. **N PEACOCKS BOWL W/ P.C.E. AND RIBBED EXT. – LIME ICE GREEN (VERY RARE ITEM W/ REALLY NICE IRID.; HAS MANUF. FLAW AT 9 O'CLOCK)**
360. N Peacocks Bowl w/ P.C.E. and Ribbed Ext. – Purp. (very scarce; has a nice multi-colored finish)
361. N Peacocks Bowl w/ P.C.E. and Ribbed Ext. – Dk. Mari. (nice dark example; really nice)
362. N Peacocks Bowl w/ P.C.E. and Ribbed Ext. – Mari. (average color and irid.; nice shape)
363. N Peacocks Bowl w/ P.C.E. and Ribbed Ext. – Sorta Pastel Mari. (lighter color and irid.)
- 550 364. **N PEACOCKS STIPPLED PLATE W/ RIBBED EXT. – BLUE/ ELEC. BLUE (RARE AND DESIRABLE; HAS RED AND BLUE HIGHLIGHTS)**
365. **N PEACOCKS FLARED PLATE W/ RIBBED EXT. – PURP. (VERY SCARCE AND HAS A GREAT FINISH; NICE)**
366. N Peacocks Flat Plate w/ Ribbed Ext. – White (scarce; frosty w/ excellent irid.)
367. N Peacocks Flat Plate w/ Ribbed Ext. – Ice Green (very scarce; nice color and irid.)
368. N Peacocks Flared Plate w/ Ribbed Ext. – Ice Green (very scarce; nice color)
369. N Peacock at the Urn All Over Stippled Ind. Ice Cream Bowl – Blue (a really dark example; looks purple)
- 2100 370. **N PEACOCK AT THE URN 7 PC. ICE CREAM SET – ICE GREEN (VERY RARE AND VERY DESIRABLE; PERFECT AND NICE)**
371. **N PEACOCK AT THE URN 5 PC. ICE CREAM SET – ICE BLUE (RARE AND VERY DESIRABLE; PERFECT W/ PINKS AND BLUES)**
372. (2) N Peacock at the Urn Ind. Ice Cream Bowls – Odd Ice Blue (very scarce; has light silvery irid.; selling each)
373. **N PEACOCK AT THE URN 7 PC. ICE CREAM SET – WHITE (RARE AND VERY DESIRABLE SET; FROSTY AND WELL MATCHED)**
374. N Peacock at the Urn 7 Pc. Ice Cream Set – Purp. (rare set; nice color and irid.; well matched)
375. N Peacock at the Urn Ind. Ice Cream Bowls – Elec. blue (absolutely super example; bright blues and yellows)
376. **N SINGING BIRDS HANDLED MUG – AQUA OPAL. (VERY RARE AND DESIRABLE; PASTEL W/ SUPER IRID.)**
377. **N SINGING BIRDS HANDLED MUG – AQUA OPAL. (VERY RARE AND DESIRABLE; SORTA PASTEL W/ SUPER IRID.)**
378. **N SINGING BIRDS HANDLED MUG – WHITE (RARE, FROSTY EXAMPLE W/ GREAT IRID.)**
379. N Singing Birds Handled Mug – Purp. (super example w/ elec. blue irid.)
380. N Singing Birds Handled Mug – Purp. (another nice example w/ bright irid.)
381. N Singing Birds Handled Mug – Elec. Blue (super example w/ bright blues)
382. N Singing Birds Handled Mug – Elec. Blue (another super example)
383. N Singing Birds Handled Mug – Dk. Mari. (about as dark as they get; nice)
384. N Singing Birds Handled Mug – Dk. Mari. (about like the above item)
385. **N SINGING BIRDS 5 PC. WATER SET – PURP. (RARE AND DESIRABLE W/ BRIGHT IRID.)**
386. N Singing Birds 7 Pc. Water Set – Green (rare and desirable; well matched; 1 tumbler is emerald)
387. **FENTON BUTTERFLY AND FERN BULBOUS WATER PITCHER AND 1 TUMBLER – BLUE (REALLY NICE BRIGHT EXAMPLE)**
388. Fenton Butterfly and Fern Bulbous Water Pitcher and 1 Tumbler – Green (really nice bright example)
389. Fenton Butterfly and Fern Bulbous Water Pitcher and 1 Tumbler – Dk. Mari. (really nice bright example)
390. **22" TALL X 5-1/4" BASE X 6-3/4" FLARE FENTON RUSTIC SWUNG FUNERAL VASE W/ COLLAR BASE – BLUE (A BIG, TALL BEAUTY W/ BRIGHT IRID.; SUPER NICE)**
391. **22-1/4" TALL X 5-1/4" BASE X 7" FLARE FENTON RUSTIC SWUNG FUNERAL VASE – BLUE (ANOTHER TALL, SATINY EXAMPLE; REALLY NICE)**
392. **17-7/8" TALL X 5-1/8" BASE X 7" FLARE FENTON RUSTIC SWUNG FUNERAL VASE – WHITE (RARE AND VERY DESIRABLE; SUPER FROSTY W/ GREAT IRID.)**
393. **FENTON WREATH OF ROSES 9 PC. FLARED PUNCH SET W/ PERSIAN MEDALLION INT. – BLUE/ ELEC. BLUE (RARE AND VERY DESIRABLE; BOWL AND BASE ARE REALLY NICE)**
394. **FENTON MIKADO LG. 8 RUFFLED STEMMED COMPOTE – BLUE (ANOTHER ATTRACTIVE BLUE FENTON ITEM; NICE)**
395. **9-3/8" FENTON DRAGON AND STRAWBERRY LG. I.C. SHAPED BOWL – ELEC. BLUE (RARE AND VERY DESIRABLE; BRIGHT BLUES, REDS AND YELLOWS)**
396. **FENTON BUTTERFLY AND BERRY 7 PC. WATER SET – BLUE (RARE SET IN THIS COLOR; WELL MATCHED)**
397. Fenton Lattice and Grape 7 Pc. Tankard Water Set – Blue (rare; an excellent example w/ bright irid.)
398. Fenton G & C/ Persian Medallion Int. Small Size Ruffled Fruit Bowl – Blue (very scare item; nice color and irid.)
399. **10-1/4" FENTON CHERRY CHAIN LG. 8 RUFFLED BOWL W/ O.T. EXT. – GREEN (ACTUALLY QUITE A RARE ITEM IN THIS COLOR; NICE)**
400. **9-1/2" FENTON PEACOCK AND GRAPE FLAT PLATE – DK. MARI. (SUPER EXAMPLE W/ BRIGHT IRID.)**
401. 9-1/2" Fenton Peacock at the Urn Flat Plate – Mari. (scarce; has average color and irid.)
402. 9-3/4" Fenton Holly Flared Plate – Mari. (scarce; a nice dark satiny example)
403. 9-1/8" Fenton Leaf Chain Flared Plate – White (very scarce; frosty w/ excellent irid.)
404. 6-1/8" Fenton Pine Cone Plate w/ Plain Ext. – Blue (satiny; average irid.)
405. Lot of Misc. Books and Price Guides (Mordini price guides; Hartung Books; etc.)



BURNS

AUCTION SERVICE

P.O. BOX 608 • BATH, NEW YORK 14810

presents

The Decker Collection

Friday & Saturday

March 9 & 10, 2001

Friday: Preview 12:00 Noon • Auction 6:00 P.M.

Saturday: Preview 8:00 A.M. • Auction 9:30 A.M.

First Class Mail
U.S. Postage
PAID
Eugene, Oregon
Permit No. 305

LEE MARKLEY
BOX 306
MENTONE IN 46539

