

# New England Carnival Glass Club Auction

Saturday, September 7th 2019 at 9:30 AM  
Preview Friday Sept 6th - times to be announced

**Double Tree- Hilton**  
99 Erdmann Way Leominster, MA 01453

On Saturday Sept 7th at 9:30 AM we will be Auctioning the Carnival Glass collection for The Tremblay Family. This is a VERY IMPRESSIVE collection that has been assembled over the last 30 years. This auction will offer something for everyone no matter what you like. Please join us at the NECGA for this exciting auction. **You DO NOT have to be a member to participate. This auction IS open to the public.**

**Where:** Double Tree- Hilton

**When:** Saturday, Sept 7th 2019 at 9:30 AM. Doors open at 8:00 AM

**Terms:** Cash check. Visa MC Discover w/ 3% clerking fee.

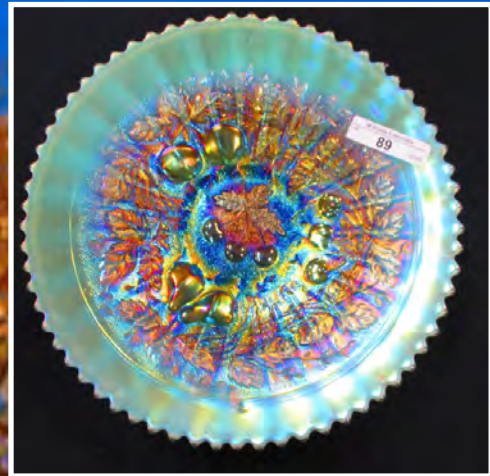
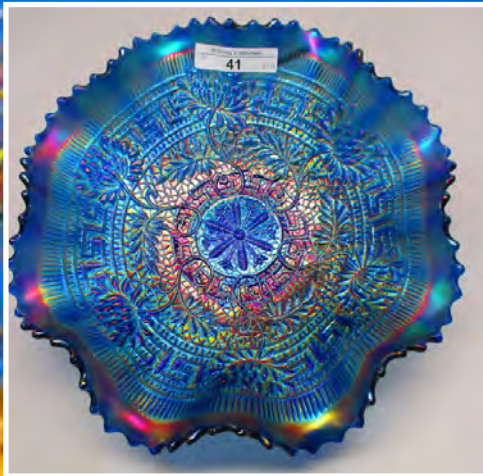
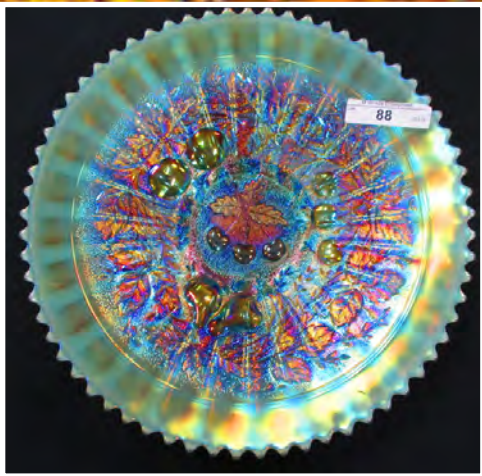
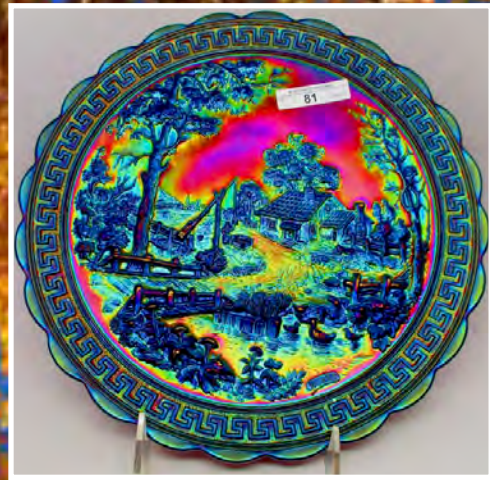
\*This auction is available on **AUCTION FLEX** for **On-Line ABSENTEE** bidding.

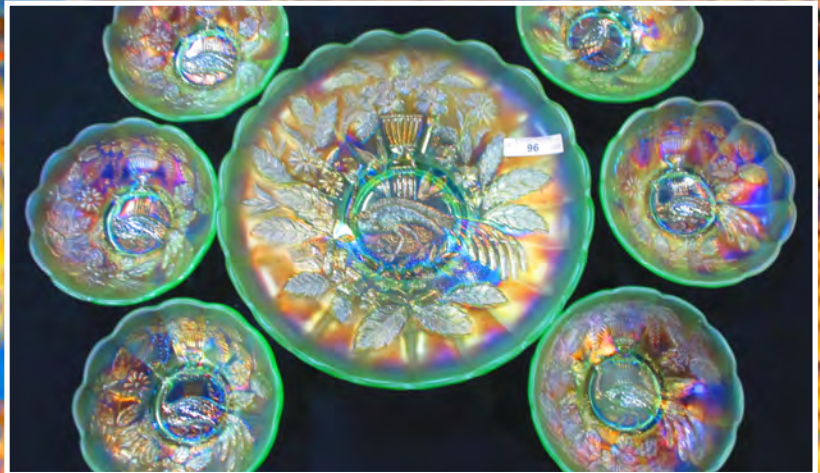
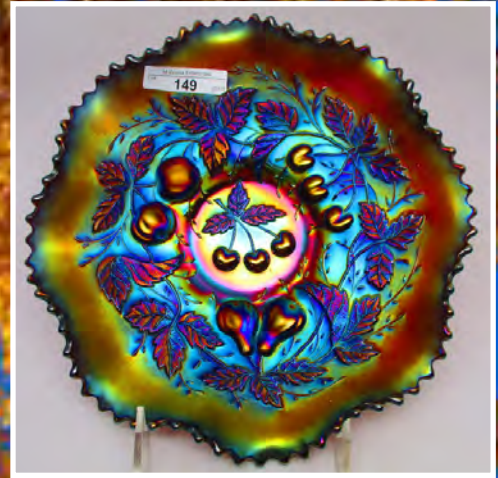
\*\*This auction is available on **PROXIBID** for **LIVE on-line bidding** with audio and video. ( read terms)

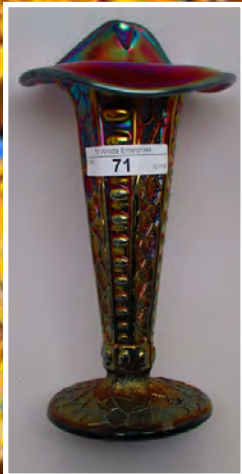
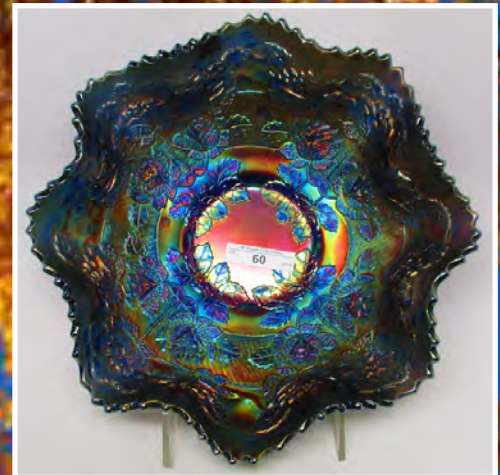
\*\*\*For a Full catalog and pictures of every item, please go to [www.matthewwrodauctions.com](http://www.matthewwrodauctions.com) and click on the AUCTION FLEX logo.

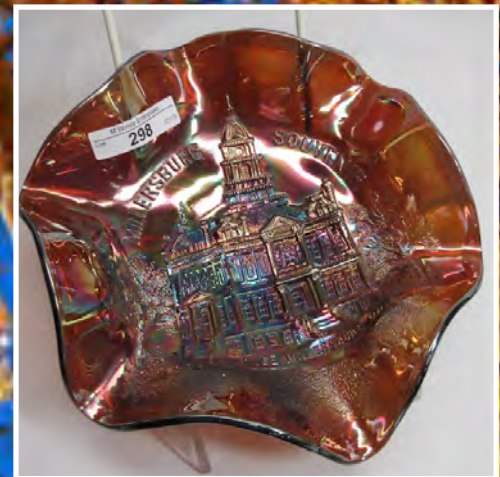
**Tremblay Collection**  
Jim Wroda- Auctioneer  
AU- 003377



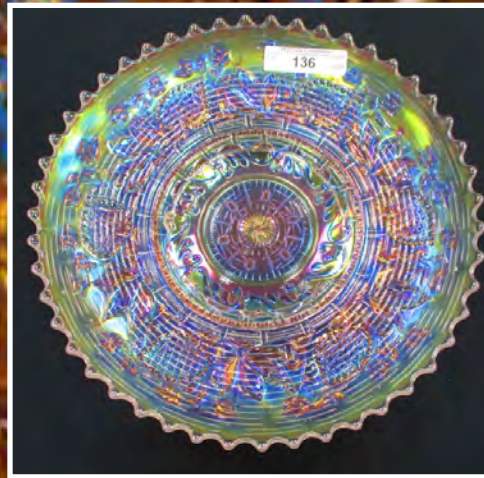














## Fenton and Contemporary Carnival Glass Auction

**THURSDAY Sept 5th 2019 at 3:30 PM**

**Double Tree - Hilton  
99 Erdmann Way, Leominster, MA. 01453**

**Over 150 pieces of quality Contemporary Carnival Glass and Fenton Art Glass to be sold. We have several nice pieces of Hanson including a RARE frog; Hand painted items; red carnival; water sets; decanter set; Boyd Elephant collection in many different colors; RARE purple slag miniature Fenton Animals; Collection of Seacost and Frolicking bear comm. items and more!**

**Terms: Cash Check. Visa MC Discover w 3% clerking fee.**

**Jim Wroda Auctioneer  
MA #003377**





- 1 Dugan marigold S- Repeat tumbler- Super & RARE
- 2 Northwood ice blue Wisteria tumbler- DARK!
- 3 Northwood white Wisteria tumbler- RARE w/ frosty irid.
- 4 Northwood purple NEARCUT tumbler- VERY RARE Only one reported
- 5 Imperial SMOKE Robin tumbler- Only old one I know of. KILLER COLOR!
- 6 Northwood LIME GREEN Oriental Poppy tumbler w/ rib interior. RARE
- 7 Northwood elec blue Raspberry tumbler. RARE w/ killer irid. Ida 1914
- 8 Millersburg mari Gay Nineties tumbler- SUPER! Radium irid on a RARE tumbler
- 9 Westmoreland marigold Checkerboard tumbler- Another killer RARE tumbler!
- 10 Northwood lime green Wisteria tumbler- RARE!
- 11 Millersburg radium green Morning Glory tumbler SPECTACULAR!!!
- 12 Millersburg radium purple Morning Glory tumbler WOW!!!
- 13 Millersburg marigold Gay Nineties tumbler- RARE!!! RADIUM IRID!
- 14 Northwood Pearl Custard Wishbone tumbler- Only one reported and no doubt what it is.. WOW! Who would have thought it!
- 15 US Glass green Big Butterfly tumbler. VERY RARE w/ just 4-5 known. Actually quite pretty. BTW> This is not the typical green.. Has a very smokey color to it. Check it out!
- 16 Millersburg radium blue Hobnail tumbler-RARE
- 17 Millersburg radium purple Perfection tumbler
- 18 Northwood white Leaf & Beads rosebowl- Frosty
- 19 Northwood elec blue Leaf & Beads rosebowl- Best I have EVER seen.. WOW!
- 20 Northwood blue Double Loop chalice (sugar)
- 21 Northwood white Grape & Cable banana boat- SMALL flick on edge...
- 22 Northwood 9" elec blue Poppy Show plate- Always sought after, especially looking like this.
- 23 US Glass elec purple Cosmos & Cane Spittoon Does have a SMALL base chip, but this is so RARE and beautiful. Who really gives a cr@@!
- 24 US Glass marigold Cosmos & Cane Spittoon WOWSER! 2 in one auction!
- 25 Millersburg radium purple Hobnail Spittoon
- 26 Millersburg 9.5" radium purple Peacock at Urn master berry bowl
- 27 Millersburg 9" radium purple Many Stars ruffled CRE bowl. Scarce
- 28 Imperial emerald green Homestead chop plate. Not much to say here but BUY IT!
- 29 Imperial 8" elec purple Open Rose deep bowl.
- 30 Imperial 9" elec purple Open Rose plate. BEAUTIFUL
- 31 Imperial 8" elec purple Shell & Sand deep bowl
- 32 Imperial amber Loganberry vase. Scarce
- 33 Imperial 8" elec purple Acanthus deep bowl. A SCREAMER!!
- 34 Dugan white Heavy Iris JIP hat made from tumbler
- 35 Dugan 9.5" celeste blue Big Basketweave vase RARE!!! just a few out there.
- 36 Fenton 9" Amy Opal Dragon & Lotus low ruffled bowl. VERY RARE and pretty!
- 37 Fenton green Orange Tree powder jar. RARE
- 38 Fenton aqua Horse Medallion ft'd nut bowl- Scarce color!
- 39 Fenton blue Iris Diagonal Band tankard w/ interior drape. SUPER COLOR!
- 40 Northwood blue Grape & Cable lg fruit bowl.
- 41 Northwood 8.5" elec blue Embroidered Mums ruffled bowl- WOW!!
- 42 Northwood 8.5" Sapphire Good Luck ruffled bowl. RARE and looks sapphire!
- 43 Northwood 8.5" blue Good Luck bowl
- 44 Northwood 8.5" dark marigold Peacocks ruffled bowl Nice irid...
- 45 Northwood 8.5" elec blue Peacocks ruffled bowl WONDERFUL!
- 46 Northwood 9" elec blue Peacocks PCE bowl.
- 47 Northwood 8.5" ice blue Hearts & Flowers ruffled bowl. Great pastel irid
- 48 Northwood 9" frosty white Poppy Show plate
- 49 Northwood 7" ice green Drapery vase. toes OK!
- 50 Northwood 7" marigold Drapery vase, toes OK
- 51 Northwood 7" green Tree Trunk squatty vase. Here's a real good one!
- 52 Northwood 10.75" aqua opal Tree Trunk vase
- 53 Northwood 10" aqua opal 4 Pillar vase. small flick on one toe..
- 54 Northwood 7" purple Leaf Columns squatty vase. SUPER COLOR!
- 55 Northwood 10" sapphire Leaf Columns vase- Scarce
- 56 2 Northwood elec green G&C candlesticks
- 57 Northwood marigold G&C candlestick
- 58 Northwood 9" blue Drapery Variant vase- RARE
- 59 Fenton 9.25" blue Rose Tree ICS bowl- RARE & Beautiful! Awesome Pressing
- 60 Fenton 9.25" blue Rose Tree ruffled bowl- Another sweet bowl. again, Awesome Pressing. TINY TINY flick in ruffle...
- 61 Fenton 9" powder blue Cherry Circles bon bon/ card tray. Real close to aqua.
- 62 Fenton 10" bright marigold Fantail ICS ft'd bowl
- 63 Fenton 5" Reverse amberina Waterlily ft'd sauce RARE color!
- 64 Fenton 10" bright marigold Stag & Holly ft'd ICS bowl. This is a real good one!
- 65 Fenton 8.5" cherry red Holly 8 ruffled bowl. Scarce. LOOKS RED!
- 66 Fenton 10" peach opal Rustic vase. VERY RARE VASE!
- 67 Fenton 11" amethyst opal April Showers vase. VERY RARE and SUPER pretty!
- 68 Fenton 18.25" purple Diamond Rib funeral vase. One of the most undervalued funeral vases out there. Get in before everyone realizes it!
- 69 Fenton 10" RED Thin Rib vase
- 70 Fenton 11.5" vaseline Thin Rib vase.
- 71 Dugan 7.5" elec purple Formal JIP vase. This is one heck of a Formal vase!
- 72 Dugan 10.5" It amethyst Lined Lattice vase, Scarce
- 73 Dugan 11.5" elec purple Lined Lattice vase w/ peg feet. RARE variation and SUPER!
- 74 2 Dugan marigold Mary Ann 2 handled vases Selling as pair
- 75 Dugan 9.5" amethyst & mari Big Basketweave vases
- 76 2 Dugan 11.5" mari Pulled Loops vases
- 77 Dugan 5.75" white Target squatty vase. small epoxy spot on base. Great lookin vase
- 78 Westmoreland 9" blue opal Corinth JIP vase.
- 79 Australian black amethyst 9" Kingfisher 10 ruffled bowl. Scarce
- 80 Imperial 12" elec purple & mari Freefold vases
- 81 Imperial 10" elec purple Homestead chop plate.. ON FIRE!!!
- 82 Imp 9" elec purple Scroll Embossed plate. SMOKIN HOT!!
- 83 Imperial 8.5" elec purple Star of David bowl.

- 84 Imperial 5.5" elec purple Thin Rib & Drape vase. KILLER!!
- 85 Imperial 5" marigold Thin Rib & Drape vase
- 86 Imperial 5.5" elec purple Morning Glory vase-Straight up! SUPER!
- 87 Imperial 8" elec purple Morning Glory vase.
- 88 Northwood 9" pastel aqua opal Three Fruits stippled plate. 2 awesome plates in a row here.. one is as good as other. BOTH ARE TOP SHELF!
- 89 Northwood 9" pastel aqua opal Three Fruits stippled plate. This one is a bit more "stretchy" irid. Again both are TOP SHELF!- No scratches on fruits or rubs anywhere. MINT!
- 90 Northwood 9" pastel mari Three Fruits stippled plate. YUMMY!
- 91 Northwood 9" elec blue Three Fruits stippled plate
- 92 Northwood 8.5" aqua opal Three Fruits stippled bowl. Scarce
- 93 Northwood 9" blue Peacocks stippled plate- One of the finest out there!
- 94 Northwood 9" pastel mari Peacocks stippled plate. WOW!
- 95 Northwood marigold G&C bon bon
- 96 Northwood ice green Peacock at Urn complete 7pc ice cream set. NEVER do you see the complete set in ice green offered. WELL MATCHED
- 97 ULTRA RARE Northwood 9.5" ice blue Fruits & Flowers ruffled bowl w/ BW back. Only one reported and it is SUPER!!! This bowl was found in Quebec several years ago.
- 98 Northwood 9" ice blue Embroidered Mums bowl. Scarce
- 99 Northwood 11" ice blue Tree Trunk vase.
- 100 3 Northwood ice blue side lilies for Wide Panel epergne. Selling choice. High bidder can take one or all.
- 100a Northwood 13" ELECTRIC PURPLE Tree Trunk elephant foot vase. This vase does have a buffing on edge as shown, HOWEVER- This is ABSOLUTELY one of the TOP vases out there. Wait till you see this puppy!
- 101 Northwood ice blue Wide Panel epergne base. crack by insets.
- 102 Northwood 13" green Thin Rib mid-size vase
- 103 Northwood 8" elec sapphire Drapery vase. OMG!!
- 104 Northwood 8.5" blue opal Drapery vase
- 105 Northwood 9.5" marigold Drapery Variant vase
- 106 Northwood 8.5" dark marigold Drapery variant vase
- 107 Northwood 9.5" dark mari Diamond Points vase
- 108 Northwood 11" purple Diamond Points vase
- 109 Northwood 10.5" pastel mari Tree Trunk vase. SUPER!!! This is NOT a \$25 mari vase!
- 110 Northwood 6 " dark mari Leaf Columns squatty vase.
- 111 Northwood purple G&C perfume bottle
- 112 Fenton 6.75" Blackberry Open Edge whimsy vase. RARE and NICE!
- 113 Fenton 9" green Holly plate- VERY DARK GREEN
- 114 Fenton 9" dark marigold Holly plate
- 115 Fenton 9" green Captive Rose plate- Scarce
- 116 Fenton 9" marigold Captive Rose plate
- 117 Fenton 9" bright mari Peacock at Urn plate. Here's a good one.
- 118 3 Fenton 9" Butterfly & Berry vases, mari- green- blue
- 119 2 Fenton marigold Plume Panels vases, 10-12"
- 120 Fenton 10.5" green & blue Diamond Rib vases
- 121 Imperial 17.5' green Ripple funeral vase. RARE COLOR!
- 122 Imperial 16.5" marigold Morning Glory Funeral vase
- 123 Imperial 8" amber Ripple vase, Nice rich color
- 124 Imperial 10.25" purple Ripple vase
- 125 2 Imperial 9.5" Morning Glory JIP vases
- 126 Northwood marigold Acorn Burrs 7 pc berry set
- 127 Northwood purple G&C sweetmeat.
- 128 Northwood marigold Acorn Burrs complete table set
- 129 Dugan white Persian Garden 2 pc fruit set. Frosty irid!
- 130 Dugan white Puzzle banana boat shape compote. this has a light smokey throw to it. Cool color
- 131 Dugan dark marigold Christmas Compote, RARE and extremely beautiful color!
- 132 Dugan 10.5" elec purple Lined Lattice vase- WOW
- 133 Dugan 10.5" white Big Basketweave vase.
- 134 Dugan purple Grape Delight rosebowl- feet OK
- 135 Dugan 8.5" purple Fanciful plate
- 136 Dugan 8.5" frosty white Fanciful low ICE bowl
- 137 Imperial green Zipper Heart giant rose bowl Extremely rare. First one I've ever sold!
- 138 Imperial electric purple Grape water carafe. Super!
- 139 Imperial electric purple Loganberry vase. One of the BEST!
- 140 Imperial electric purple Grape 6-pc. wine set. Well matched!
- 141 Imperial electric purple Grape wine
- 142 Imperial marigold Grape 9 pc. wine set
- 143 Imperial 12.5" electric amber Ripple mid-size vase. Rare & gorgeous! Does have a 2" internal stress line mid-way down the vase. This is NOT a crack. Color WAY makes up for this!
- 144 Imperial marigold Windmill milk pitcher
- 145 Imperial marigold. Field Flower 5-pc. water set
- 146 Imperial marigold Tiger Lily water pitcher
- 147 Northwood 12" marigold Thin Rib mid-size vase. Killer color!
- 148 Northwood 12.5" electric purple Thin Rib mid-size vase.
- 149 Northwood 9" electric purple Three Fruits ruffled bowl. Stunning!
- 150 Northwood 9" electric purple Poinsettia & Lattice footed bowl. Wonderful!
- 151 Northwood marigold Wishbone single lily epergne
- 152 Northwood purple Wishbone single lily epergne
- 153 Northwood bright green G & C butter dish
- 154 Northwood bright marigold G & C butter dish
- 155 Northwood marigold G & C creamer
- 156 Northwood sapphire round Bushel Basket
- 157 Northwood aqua round Bushel Basket Very rare & gorgeous!
- 158 Northwood aqua opal round Bushel Basket
- 159 Northwood blue round Bushel Basket
- 160 Northwood ice green round Bushel Basket
- 161 Northwood pumpkin marigold round Bushel Basket
- 162 Northwood green G & C candle lamp
- 163 Northwood aqua opal Fruits & Flower bon bon
- 164 Northwood ice blue Fruits & Flower bon bon
- 165 Northwood green 8-sided Bushel Basket
- 166 Northwood green Hearts & Flowers compote
- 167 Northwood electric blue Hearts & Flowers compote
- 168 Northwood purple Hearts & Flowers compote
- 169 Northwood marigold Hearts & Flowers compote

- 170 Northwood frosty white Hearts & Flowers compote
- 171 Northwood aqua opal Leaf & Beads rose bowl
- 172 Northwood electric green Leaf & Beads rose bowl w/ Sunflower interior
- 173 Northwood marigold Leaf & Beads rose bowl with Sunflower interior
- 174 Northwood aqua opal Beaded Cable rose bowl
- 175 Northwood pumpkin marigold Beaded Cable rose bowl
- 176 Northwood sapphire Beaded Cable rose bowl w/Rays interior-VERY RARE COLOR!!!
- 177 Northwood emerald green Corn vase w/stalk base. Absolutely one the finest ones you'll find in GREEN!
- 178 Northwood ice green Corn vase w/stalk base
- 179 Northwood green Corn vase w/stalk base.
- 180 Northwood marigold Corn vase w/plain base
- 181 Northwood bright purple Ivy Town Pump. Really attractive!
- 182 Northwood green G & C hatpin holder
- 183 Northwood bright marigold G & C hatpin holder
- 184 Northwood electric purple G & C hatpin holder. One of the BEST!
- 185 Northwood electric purple Tornado vase. I would like to see the one that is better than this one! Unfortunately, it does have a line in the side of it. This is the small size vase,
- 186 Northwood marigold Daisy & Drape vase w/cupped top. Pastel color!
- 187 Northwood dark marigold Daisy & Drape vase w/flared top
- 188 Northwood pastel aqua opal Daisy & Drape vase w/flared top
- 189 Northwood frosty white Daisy & Drape vase w/cupped top
- 190 Northwood frosty white Raspberry 7 pc. water set. Very Rare Set!
- 191 Northwood 11" electric purple G & C ICS bowl
- 192 Fenton green Mikado ruffled compote
- 193 Fenton blue Mikado compote w/ice cream top
- 194 Fenton marigold Mikado compote w/flared top
- 195 Fenton marigold Mikado compote w/ruffled top
- 196 Fenton 18" marigold Rustic funeral vase
- 197 Fenton marigold Butterfly & Berry butter dish, sugar, & spooner
- 198 Fenton blue G & C fruit bowl w/Persian Medallion interior
- 199 Fenton marigold G & C fruit bowl w/Persian Medallion interior
- 200 Fenton marigold Leaf Tiers 5 pc. water set
- 201 Fenton green Wreath of Roses punch bowl & base. w/PM interior
- 202 Fenton electric purple Thistle banana boat Awesome color for this!
- 203 Fenton 9.5" marigold Dragon & Strawberry footed bowl. Nice color!
- 204 Fenton 8" electric purple Holly ICS bowl
- 205 Fenton amberina 8" Peacock & Grape ICS bowl Yellow base, red center, yellow tips. Much harder to find than just red!
- 206 Fenton 9" marigold Peacock & Grape 8-ruffled bowl
- 207 Fenton 9.5" white Orange Tree plate w/stretch iridescence. Almost a chop plate!
- 208 Fenton 8" marigold Captive Rose ICS bowl
- 209 Fenton electric blue Orange Tree hatpin holder. Feet ok!!
- 210 Fenton marigold Orange Tree hatpin holder. Super color & feet OK!
- 211 Fenton marigold Persian Medallion hair receiver
- 212 Fenton blue & marigold Persian Medallion hair receivers
- 213 Fenton purple Vintage single lily epergne- small size
- 214 Fenton electric green Fenton Flowers rose bowl. Feet OK!
- 215 Fenton 12.5" blue Bulls Eye & Beads vase. Rare!
- 216 Fenton blue & marigold 12" April Showers vases
- 217 Fenton 13" blue & green Spearhead & Rib vases (green is actually a tough color!)
- 218 Fenton 7.75" green & blue Paneled Diamond & Bow vase and a purple 9" Flute vase (3 vases)
- 219 Fenton 16.5" blue Rustic swung vase w/CRE top
- 220 Imperial pumpkin marigold 8.75" Beaded Bullseye vase
- 221 Imperial pumpkin marigold 10.75" Beaded Bullseye vase
- 222 2 Imperial 7" green Morning Glory vases
- 223 Imperial 5" -5.75"-6.5"-marigold Morning Glory vases
- 224 Millersburg marigold Hobnail Swirl rose bowl
- 225 Fenton marigold Knotted Beads vases, 9.75" & 12.5"
- 226 Northwood 12.5" radium marigold Tree Trunk mid-size vase. Killer!
- 227 Northwood purple Dandelion tankard- line in handle
- 228 Northwood radium marigold Grape Arbor tankard
- 229 Northwood frosty white Grape Arbor tankard
- 230 Northwood ice blue Wisteria tankard. Awesome color but does have a crack by the handle. Here's a chance to get a very rare piece for a reasonable price.
- 231 Northwood marigold G & C cracker jar
- 232 Northwood 8.5" purple Rose Show bowl
- 233 Northwood 9" marigold Good Luck PCE bowl
- 234 Northwood aqua opal Fine Cut & Roses rosebowl. Rare!
- 235 Northwood electric green Fine Cut & Roses rosebowl.
- 236 Northwood purple Fine Cut & Roses rosebowl.
- 237 Northwood marigold Fine Cut & Roses rosebowl.
- 238 Northwood frosty ice blue Fine Cut & Roses rosebowl.
- 239 Northwood frosty white Fine Cut & Roses rosebowl. Feet on ALL OF THESE look OK!
- 240 Imperial purple Flute cream/sugar
- 241 Imperial electric purple Flute breakfast sugar
- 242 Northwood 5" marigold Memphis sauce
- 243 Northwood 6" ice green Peacock at Urn ice cream bowl
- 244 Northwood 10" bright white Peacock at Urn master ice cream bowl. Really nice color!
- 245 Northwood purple G & C centerpiece bowl w/points in
- 246 Northwood dark marigold G & C centerpiece bowl with points in
- 247 Northwood ice green G & C centerpiece bowl w/points up-RARE
- 248 Northwood electric blue G & C banana boat. Great color!
- 249 Northwood marigold G & C stippled banana boat
- 250 Northwood electric blue Peacock at Fountain fruit bowl. As good as they get!
- 251 Cambridge green Inverted Feather cracker jar
- 252 Imperial marigold Crucifix candlestick
- 253 Jenkins marigold 10" Cut Flowers vase
- 254 Northwood marigold Wide Panel 4-lily epergne Tough to find!
- 255 Northwood purple Acorn Burrs 7 pc. water set

- 256 Northwood green Acorn Burrs 7 pc. water set
- 257 Northwood marigold G & C 7 pc. water set
- 258 Northwood green G & C 5-pc. water set
- 259 Northwood electric green Singing Bird water pitcher!
- 260 2-Northwood green Singing Bird tumblers
- 261 Northwood purple G & C 7 pc. water set
- 262 Fenton blue Butterfly & Berry 5 pc. water set
- 263 Northwood marigold Peacock at Fountain 5 pc. water set
- 264 Imperial blasting electric purple Windmill water pitcher
- 265 2 Imperial electric purple Windmill tumblers CHOICE!
- 266 Cambridge green Buzz Star water pitcher with 1 tumbler
- 267 Cambridge purple Inverted Thistle water pitcher. Very Rare!
- 268 Imperial electric purple Diamond Lace 7 pc. water set. Spectacular!
- 269 Dugan marigold Harvest Flower tankard. Very rare! Small imperfection on back.
- 270 2 Dugan marigold Harvest Flower tumblers. Choice
- 271 Northwood green Memphis punch bowl & base w/2 cups. Rare & REALLY PRETTY!!!
- 272 Northwood marigold Memphis 8 pc. punch set. Really dark and well matched!
- 273 Northwood ice green Memphis punch base
- 274 Northwood stunning electric blue-green G & C stippled punch base. The color on this is nothing short of INTENSE! Who cares if it is just a punch base. One of the best pieces of Northwood green you will ever see.
- 275 Northwood green G & C stippled punch top. Very Scarce!
- 276 Northwood marigold Peacock at Fountain punch bowl & base w/2 cups
- 277 Fenton green Sailboats goblet! Very Rare!
- 278 Fenton purple Sailboats goblet. Very Rare! Not sure these 2 goblets have ever sold in the same auction!
- 279 5 (NOT 50) "shades of red" Orange Tree shaving mugs. Selling choice. High bidder can take 1 or all 5. These are really cool!
- 280 Northwood aqua opal Dandelion mug
- 281 Northwood dark pumpkin marigold Ivy Town Pump. This is by far the finest Town Pump I think you will ever find. BUY IT!
- 282 Northwood electric purple Ivy Town Pump. Another wonderful example
- 283 Northwood 9" horehound Nippon PCE bowl. If there were ever such a thing as electric horehound-HERE IT IS on a very rare bowl.
- 284 Fenton 9" pumpkin marigold JN LEDFORD COOLEEMEE, NC plate w/bright pink iridescence! If you need one, this is the one. If you have one, Here is a great trade up!
- 285 Fenton 9" blue Dragon & Lotus plate. I think only a couple known!
- 286 Fenton 8" emerald green Concord ruffled bowl. Spectacular color!
- 287 Fenton 8" emerald green Orange Tree ICS bowl. Another stunning piece of green
- 288 Fenton 7.5" electric blue 1914 Parkersburg Elk plate. I can not imagine a better one than this. Electric blue from edge to edge!!!
- 289 Fenton 7.5" blue Illinois Soldiers & Sailors plate Very Scarce!
- 290 Fenton 6" purple Rood's Chocolates Pueblo plate w/tremendous yellow, blue, & green iridescence
- 291 Northwood 6" electric sunburn purple "We Use Broeker's Flour" plate. Tremendous iridescence!
- 292 Northwood 6" light amy. Eagle Furniture Co. flat plate w/radium iridescence
- 293 Northwood 8.5" emerald green Greek Key ruffled bowl. One of the best you'll find!
- 294 Northwood 10" green Peacock at Urn master ICS bowl. Rare color!
- 295 Millersburg 6" purple Peacock at Urn plate
- 296 Millersburg 6" green Vintage Hobnail ICS bowl. Very Rare
- 297 Millersburg 7.5" radium purple UNLETTERED Courthouse bowl. Very rare & beautiful!
- 298 Millersburg 7.5" radium purple Courthouse bowl. Great detail & color!
- 299 Imperial 17" marigold Ripple funeral vase
- 300 Imperial electric smoke Fashion water pitcher Chip on base as shown
- 301 Imperial 11" electric purple Grape chop plate Beautiful!
- 302 Imperial 8" electric purple Shell & Sand flared bowl
- 303 Imperial electric purple Grape punch bowl & base. Awesome!!
- 304 Fenton 9" Persian blue Vintage 8-ruffle bowl. Super rich color!
- 305 Fenton 7.5" ICE BLUE Acorn ruffled bowl. Extremely Rare!
- 306 Fenton 6.5" ice green Leaf Chain ruffled bowl Extremely rare & very pretty!
- 307 Fenton 19.5" electric green Rustic funeral vase. Small bubble in base. NOT OPEN
- 308 Fenton 17" blue Rustic swung vase. Python mouth
- 309 Fenton LIME GREEN G&C fruit bowl w/Persian Medallion interior. Have NEVER heard or seen of this color before.
- 310 Dugan 9" blue Round Up plate
- 311 Dugan lime green Coin Spot ruffled compote w/marigold overlay. Very rare color!
- 312 Dugan ice green Wind Flower gravy boat. Scarce
- 313 Dugan electric purple Many Fruits punch bowl & base
- 314 Northwood 9" ice green Poppy Show plate. Rare! Poppies look ok!
- 315 Northwood 9" bright ice blue Rose Show plate
- 316 Northwood 8.5" green Rose Show bowl
- 317 Northwood green Poppy pickle dish. Very pretty!
- 318 Northwood lime green Daisy & Plume footed candy dish. Very Rare!
- 319 Northwood ice blue Daisy & Plume footed candy dish. Very Rare!
- 320 Northwood aqua opal Leaf & Beads flared nut dish.
- 321 Northwood aqua opal 8" Drapery vase. Couple small chips on bottom of the toes.
- 322 Northwood green Wishbone single lily epergne. Scarce
- 323 Northwood 8.5" Renninger blue stippled Good Luck ruffled bowl. Tough color. TINY flick on edge at 3:30. TINY!
- 324 Northwood ice blue Peacock at Fountain spooner. small roughness on collar base
- 325 Northwood 10" purple Leaf Columns vase w/electric highlights