

**Let's take the Frisco 1522 from Newburg, MO. to Grantville, PA.
for the 2019 Keystone Carnival Glass Convention
featuring the Gary & Janet Heavin Collection!!
All Aboard!**



Keystone Carnival Glass Club Auction

Saturday, May 11th 2019 at 9:30 AM

Preview Friday May 10th 10- 4pm

Holiday Inn - Grantville, PA

604 Station Rd. Grantville, PA. 17028

717-469-0661 for reservations for the KEYSTONE CLUB

On Saturday May 11th 2019 at 9:30 AM we will be Auctioning the IMPRESSIVE Carnival Glass collection for Gary and Janet Heavin of MO. This is an absolute gem of a collection with many top carnival rarities and hard to find items. However, this auction will offer something for everyone no matter what you like. Please join us at the Keystone Carnival Convention for this exciting auction. You DO NOT have to be a member to participate. This auction IS open to the public.

Where: Holiday Inn- Grantville, PA

When: Saturday, May 11th 2019 at 9:30 AM. Doors open at 8:00 AM

Terms: Cash check. Visa MC Discover w/ 3% clerking fee.

*This auction is available on **AUCTION FLEX** for **On-Line ABSENTEE** bidding.

This auction is available on **PROXIBID for **LIVE on-line bidding** with audio and video. (read terms)

***For a Full catalog and pictures of every item, please go to **www.matthewwrodauctions.com** and click on the AUCTION FLEX logo.

Gary & Janet Heavin Collection

Jim Wroda- Auctioneer

AU- 005279

** for FULL convention schedule, please visit our website or Keystone Carnival Glass FB page.











Millersburg Hobstar & Feather Swung Vase made from a Giant Rosebowl. Millersburg's version of a Funeral vase. Only 2 purple and 1 green known. IMPRESSIVE!



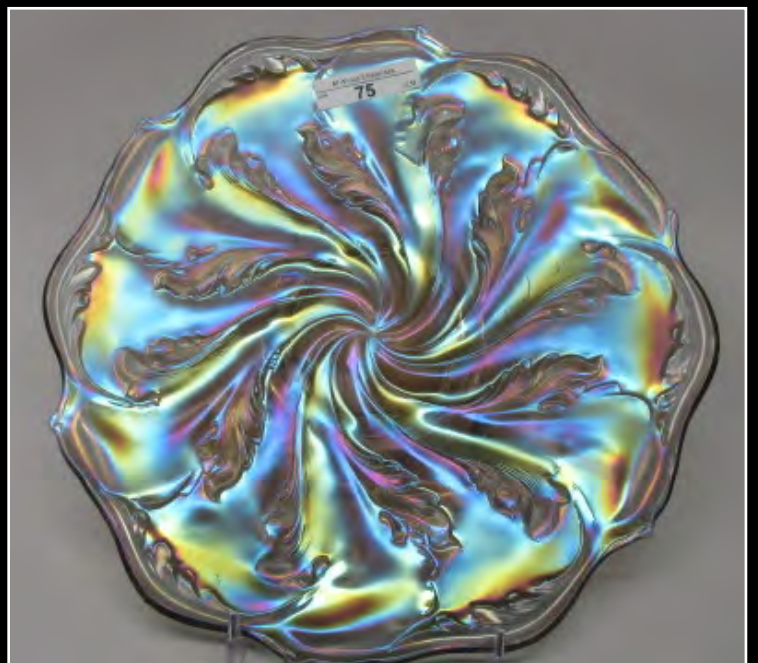
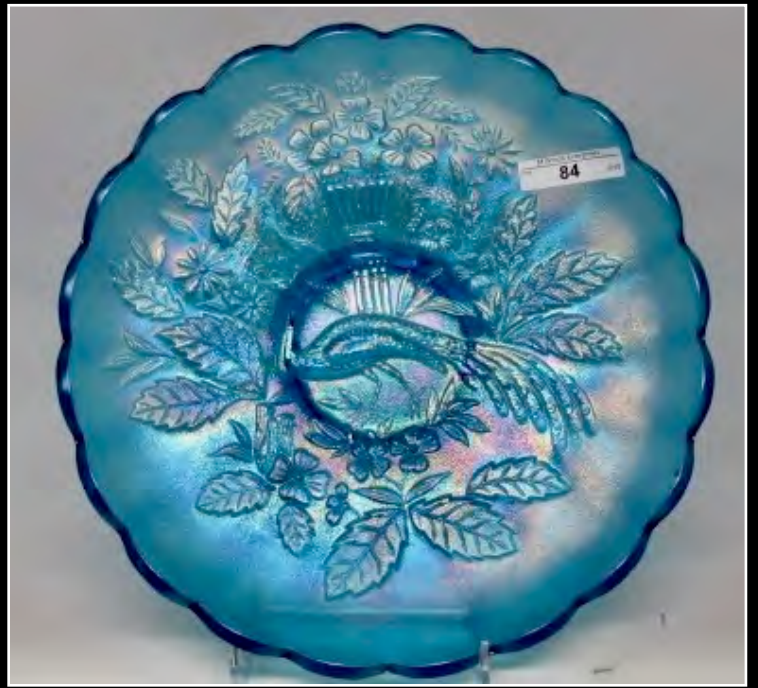


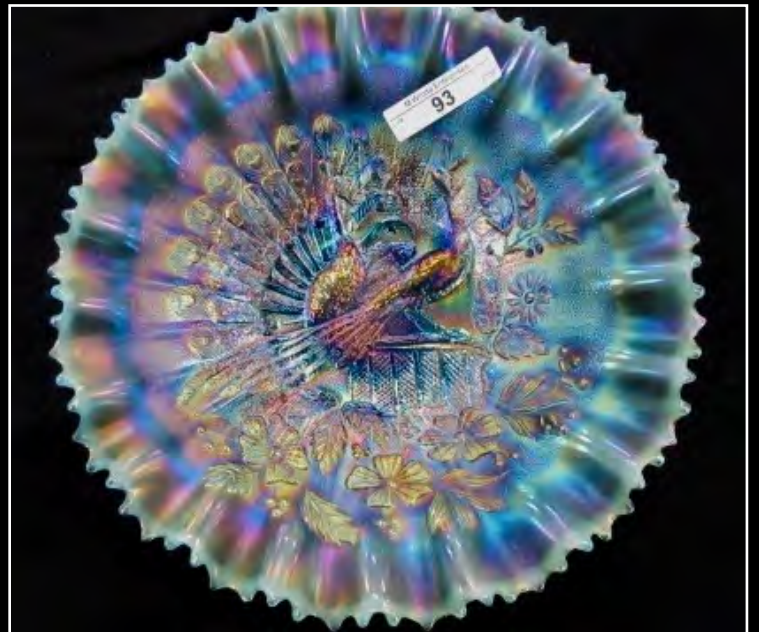
2 VERY RARE MILLERSBURG BIG FISH BOWLS.
RADIUM PURPLE 4 LOBES TURNED DOWN BOWL
RADIUM GREEN PROOF / FLARED ROUND BOWL

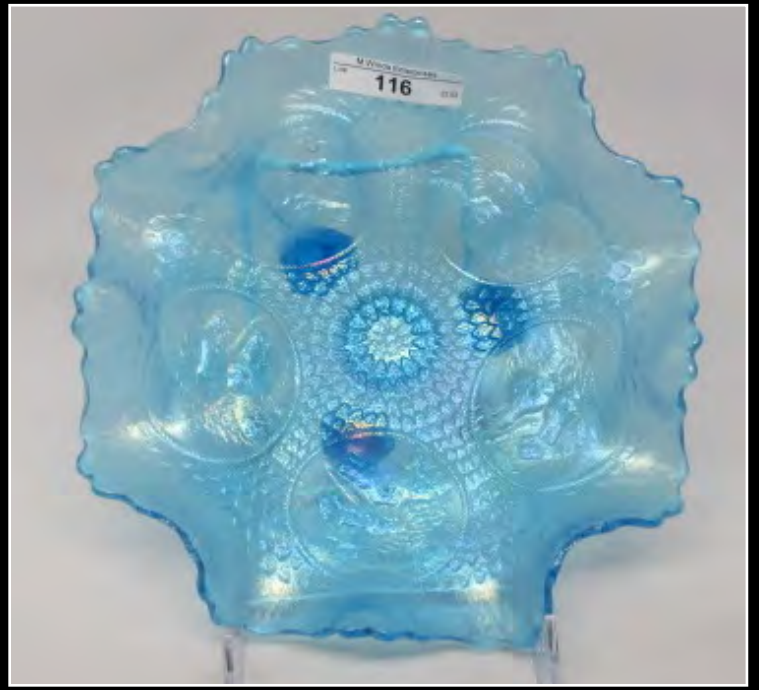






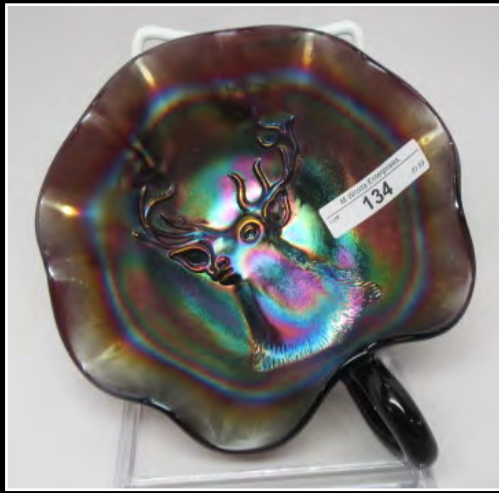






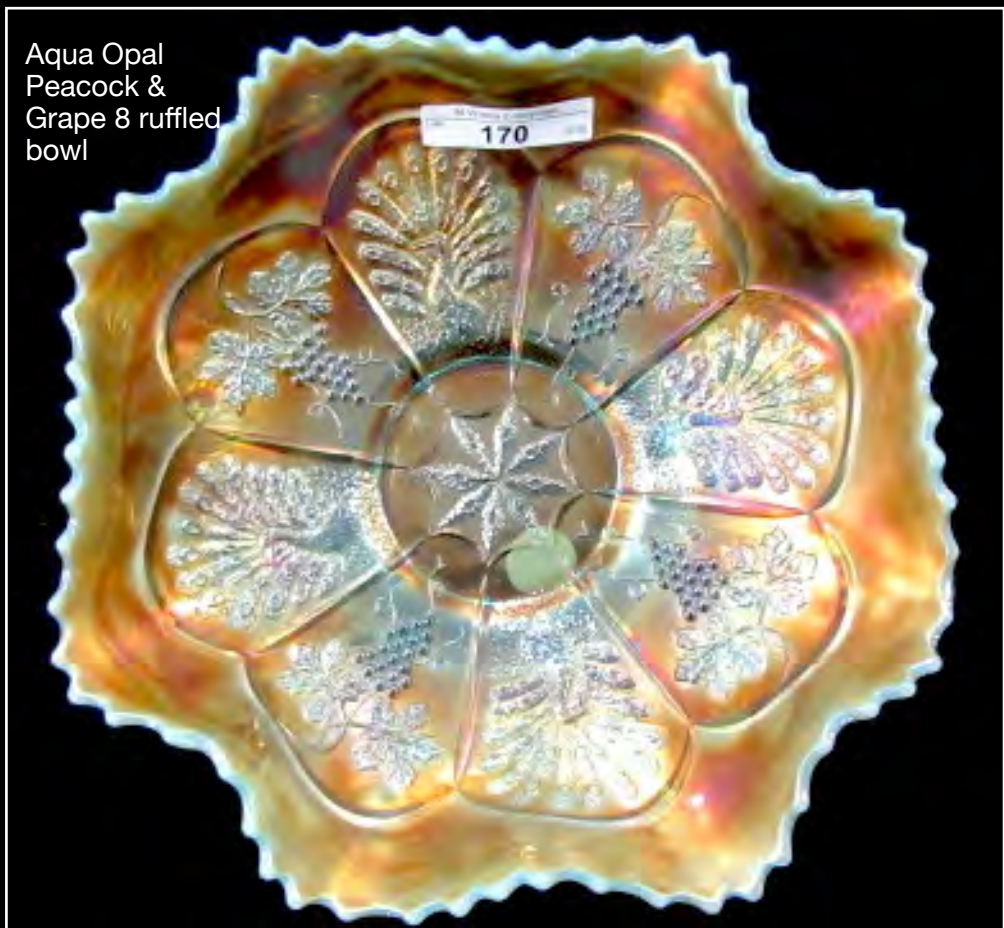




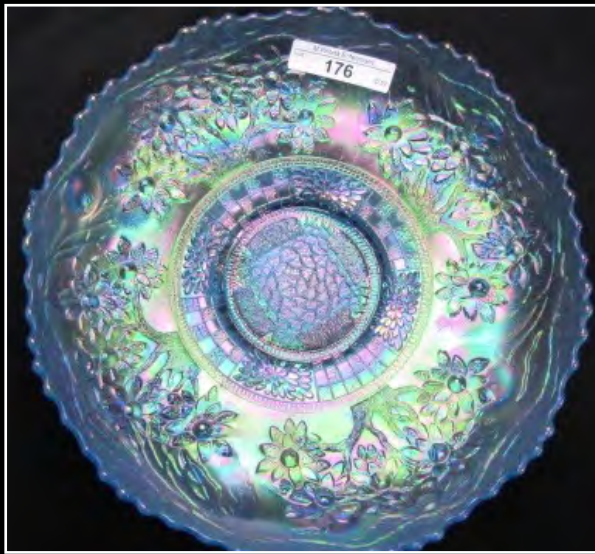


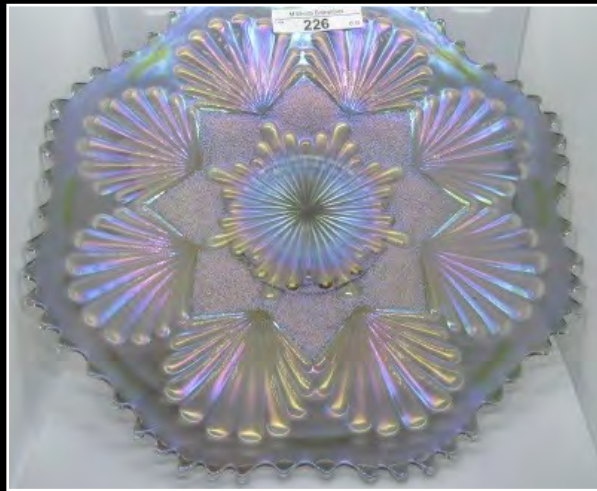
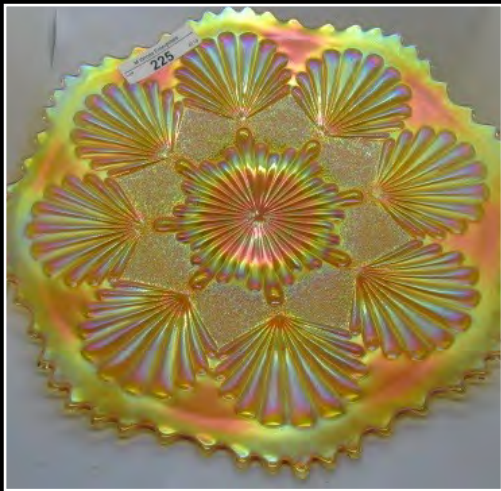


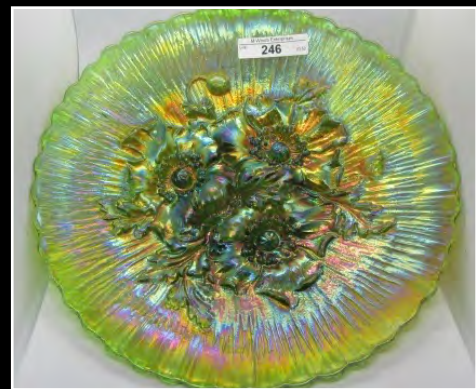
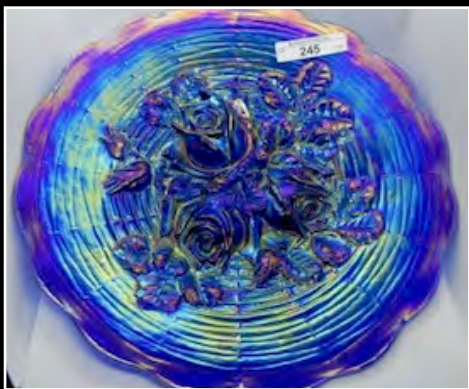
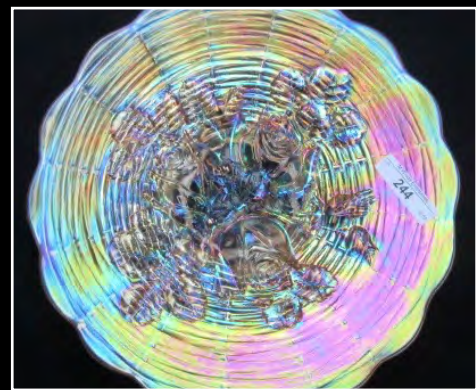
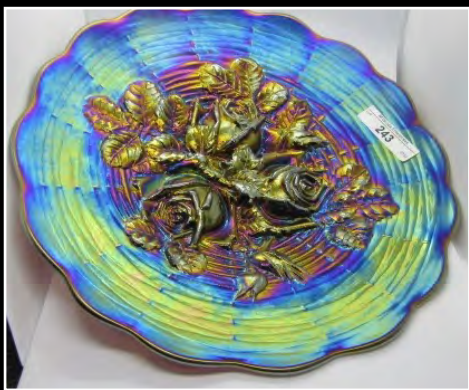
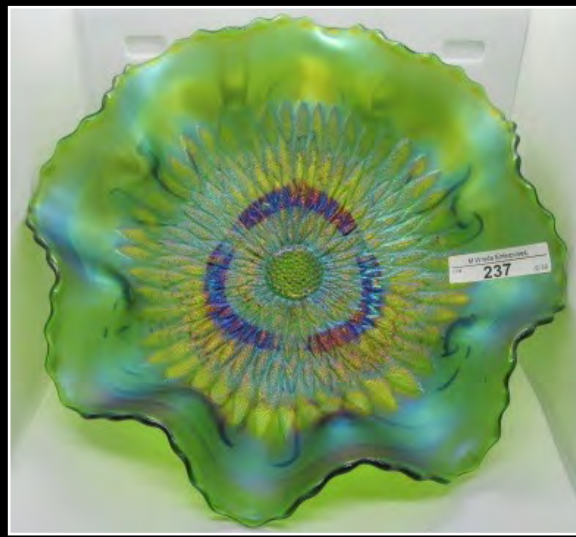
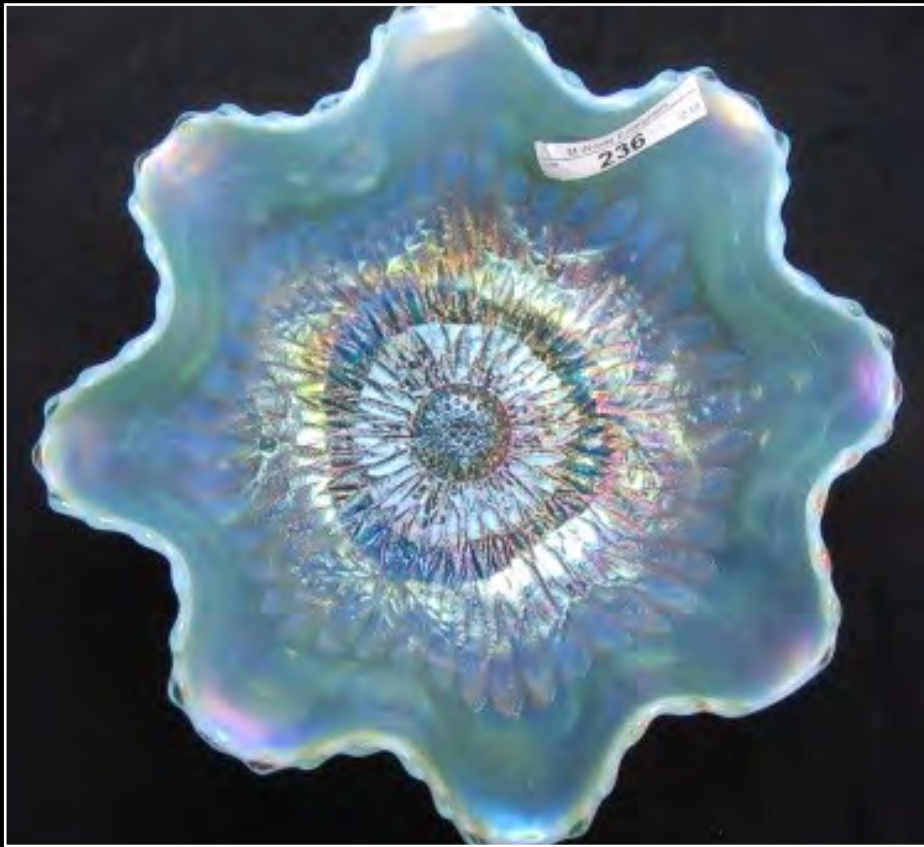
Yes that's a Marigold Holly Plate and
Yes it looks like that!



Aqua Opal
Peacock &
Grape 8 ruffled
bowl

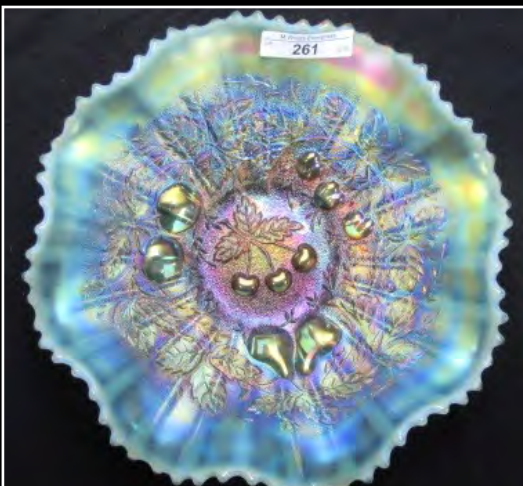




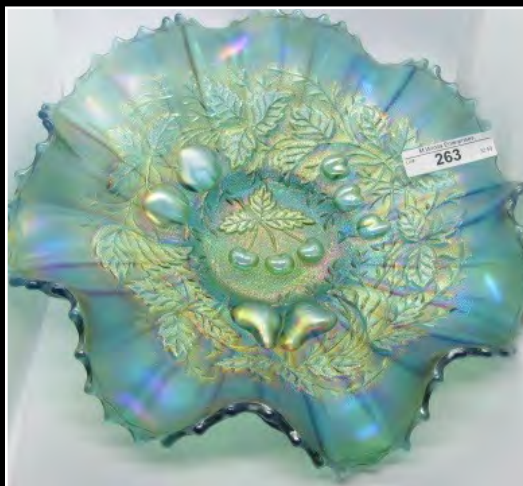




Horehound

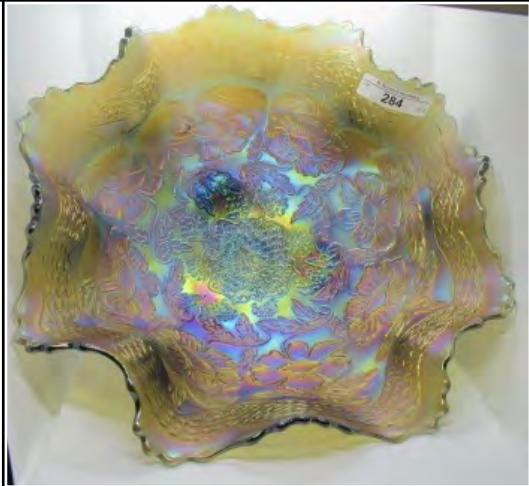
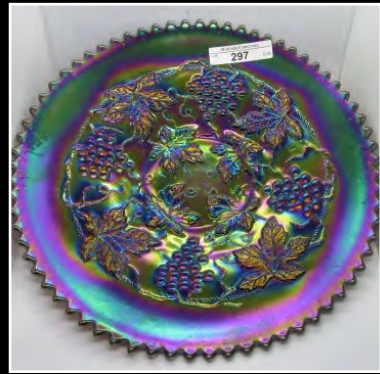


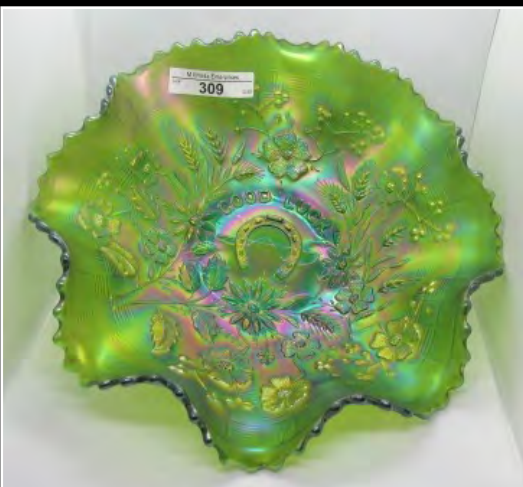
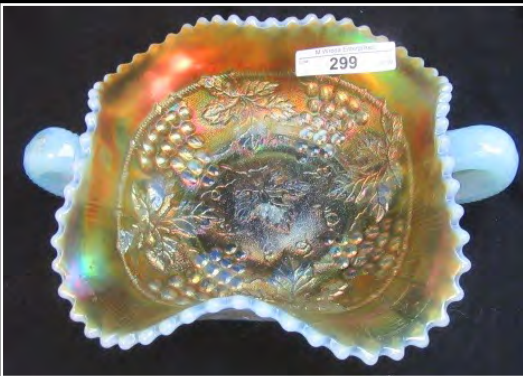
Apple Green Stippled





Sapphire Tankard
and 6 Ice Blue
tumblers separately





- 1 Nwood IB Peacock at Fountain tumbler
- 2 Imperial Electric Blue Flute Tumbler Tiny flick on Edge.
- 3 Dugan purple Maple Leaf Tumbler
- 4 Dugan Purple Heavy Iris Tumbler
- 5 Nwood Green Wishbone Tumbler
- 6 Nwood white Oriental Poppy tumbler
- 7 N wood Pastel Mari. Grape Arbor Tumbler
- 8 Fenton Purple Fluffy Peacock Tumbler
- 9 Fenton Radium Purple Fluffy Peacock Tumbler
- 10 Nwood Peacock at Fountain electric blue tumbler. WOW!
- 11 Imperial elec. purple Lustre Rose tumbler
- 12 Nwood Elec Purple Dandelion Tumbler
- 13 Nwood Dark Mari Springtime Tumbler
- 14 Nwood Green Springtime Tumbler
- 15 Nwood Elec Purple Singing Birds Tumbler
- 16 Nwood Emerald Green Singing Birds tumbler
- 17 Nwood IB Peacock at the Fountain Tumbler
- 18 N wood Pastel Mari. Grape Arbor Tumbler
- 19 Imperial elec. purple Lustre Rose tumbler
- 20 Dugan God & Home Blue Tumbler
- 21 Flint Glass Company IG Frog Candy Container
- 22 Wisteria Match Holder. Rare! We attribute this to Fenton.
- 23 Imperial smoke Corn bottle
- 24 Imperial mari. Corn bottle
- 25 Camb. emerald green Near Cut cologne. Chip on base of stopper
- 26 Camb. mari. Near Cut cologne. Very rare color. Stopper has small flake on edge. John & Loretta Nielson collection
- 27 Fenton mari. Butterfly & Berry hat pin holder
- 28 Nwood AO Grape and Cable Hat Pin Holder. Opal 4" Down on the piece. Absolutely beautiful. Kojas Collection
- 29 Nwood dark IB G & C hat pin holder Rare
- 30 Nwood electric blue Grape and Cable hat pin holder Extremely rare
- 31 Nwood marigold Ivy Town Pump- RARE color
- 32 Nwood purple Ivy Town Pump
- 33 Nwood Aqua Opal Corn vase. Super pastel irid Has stalk base. Very Rare!
- 34 Nwood electric purple Corn vase w/stalk base Whitley collection
- 35 Nwood green Corn vase. Very pretty. Has stalk base
- 36 Nwood mari. Corn vase. Has odd base tint! Check it out!
- 37 Nwood aqua opal Daisy and Drape vase flared
- 38 Nwood white Daisy & Drape vase w/cupped top
- 39 Nwood 8" Tree Trunk bright mari. Jester cap vase. Rare!!!
- 40 Fenton mandarin Grape and Cable centerpiece bowl. Beautiful! Points turned in. Very Rare!
- 41 Nwood IB Grape and Cable centerpiece bowl. Marie Capps collection. Points turned in
- 42 Nwood pumpkin mari. G & C centerpiece bowl. Dark Dark Dark!!! Points turned in.
- 43 Nwood IG G & C centerpiece bowl. Points up.
- 44 Nwood White Grape and Cable Low Fruit Bowl. Very Frosty, Very scarce.
- 45 Mburg Hobstar and Feather 16" Purple Swung Vase made from Rosebowl. Only two known, this is the only perfect one. Some consider this Millersburg attempt at a funeral vase. A TOP RARITY IN MILLERSBURG GLASS
- 46 Mburg purple Multi Fruits and Flowers Water Pitcher with drape base. Extremely rare and pretty!!! Only a few known
- 47 Mburg Emerald Green Ohio Star vase WOWSER!!!
- 48 Mburg 6" Grape Wreath radium purple flared ruffled bowl w/solid blue irid.!!! WOW!
- 49 Mburg 6" radium purple Holly Sprig CRE bowl w/blue irid.
- 50 Mburg 8" green Trout & Fly ICS bowl Scarce
- 51 Mburg green Trout & Fly ICS bowl 9"
- 52 Mburg 8.5" elec. lavender Trout & Fly ruffled bowl
- 53 Mburg green Big Fish diamond shape bowl RARE
- 54 Mburg radium green Big Fish deep proof bowl. Blasting Color. Bring 3 checkbooks!!! You will know why when you see this in person!
- 55 Mburg 8" Beautiful Radium Purple Big Fish Square Bowl with Lobes turned down. Extremely rare with exceptional color. Only a couple known.
- 56 Mburg radium green Holly Sprig CRE bowl w/bright blue irid.
- 57 Mburg purple Seacoast pin tray. No issues
- 58 Mburg green Seacoast pin tray. No issues
- 59 Mburg green Sunflower pin tray. No Issues
- 60 Mburg 9.5" Radium purple Peacock at Urn ICS bowl No Bee, No Beads. Turns in like a rose bowl. From Wills collection. Stunning!
- 61 Mburg 6" green Cosmos ICS bowl. Radium
- 62 Mburg 8" radium purple 2 eyed Elk 3/1 edge bowl Rare.
- 63 Mburg 10" Blue Many Stars Bernheimer bowl. Always a top item.
- 64 Mburg mari. Pipe Humidor. Dark electric marigold Whitley Collection, enough said!
- 65 Mburg green Nesting Swan ruffled bowl Radium color. The absolute finest!! From Whitley collection.
- 66 Mburg pastel mari. Nesting Swan ruffled bowl Super Blue Irid. Absolutely fantastic!
- 67 Mburg radium purple Zig Zag ruffled 3/1 edge bowl. Beautiful!!!
- 68 Mburg green Whirling Leaves tri-corner bowl. Radium.

- 69 Imperial Homestead chop plate- 10" elec blue signed NuArt. Yes this is elec blue! Stunning!!
- 70 Imperial Homestead 10" chop plate-emerald green NuArt/ Screaming w/ color!
- 71 Imperial Homestead chop plate-electric amber This will take your breathe away!
- 72 Imperial Homestead chop plate-elec. purple WOW!
- 73 Imperial smokey blue Chrysanthemum chop plate signed NuArt. Very unique color. Small heat check in collar base. If this were a Fenton item, they would call this Azure Blue.
- 74 Imperial smoke Chrysanthemum chop plate
- 75 Imperial smoke Acanthus chop plate. A Stunner!!
- 76 Imperial elec. purple Scroll Embossed plate Bright Yellow and Blur Irid.
- 77 Imperial elec. purple Scroll Embossed plate w/electric irid. 8-sided.
- 78 Imperial elec. purple Scroll Embossed plate
- 79 Imperial elec. purple Scroll Embossed plate Eight sided with Yellow and Green Irid.
- 80 Nwood custard G & C large footed fruit bowl. Blue stain. Banded & Stippled. WOW!!
- 81 Nwood custard G & C large footed fruit bowl. Nutmeg stain. Banded & Stippled
- 82 Nwood elec. blue G & C large footed fruit bowl Banded & Stippled. Outstanding!
- 83 Nwood elec. purple G & C large fruit bowl Yellow irid. w/blue grapes. Stunning!
- 84 Nwood sapphire Peacock at Urn master ICS bowl. Tremendous pastel color. From the Brazell collection. Tom Mordini once said this was the finest piece of sapphire ever made. Whether it is or not, it is absolutely a must have!
- 85 Nwood 10" elec. blue Peacock at Urn MIC. Beautiful rich blue irid.
- 86 Nwood 9" IG Embroidered Mums plate. Blue irid from Brazell collection
- 87 Nwood 9" elec. blue Stippled Peacocks plate
- 88 Nwood 9" Pastel mari. Stippled Peacocks plate
- 89 Nwood 9" radium elec. purple Peacocks plate WOW!
- 90 Nwood 9" elec. blue Peacocks plate.
- 91 Nwood 9" Ice Green Peacocks plate, as good as you will find.
- 92 Nwood 9" ice blue Peacocks plate, KEEPER
- 93 Nwood 9" AO Peacocks stippled PCE bowl Tremendously Rare!. Kojas Collection. Only couple known
- 94 Nwood 9" purple Peacocks PCE bowl elec. purple highlights
- 95 Nwood 9" mari. Peacocks PCE bowl. NICE!
- 96 Nwood 9" green Peacocks PCE bowl w/BWB. Very hard to find bowl
- 97 Nwood 8.5" IG Peacocks bowl w/plain back. Rare!
- 98 Nwood 8.5" Peacocks Smoke Ruffled Bowl. Exceedingly rare color for anything in Northwood. Just a handful of these are known to exist. Here is a beautiful one.
- 99 Nwood 8.5" powder blue opal Peacocks ruffled bowl AWESOME!!! WHAT A GREAT COLOR!
- 100 Nwood 8.5" AO Peacocks ruffled bowl. Pastel irid. Stunning
- 101 Nwood 8.5" Horehound Peacocks ruff. bowl w/ribbed back. VERY RARE BOWL!
- 102 Nwood 8.5" Peacocks ruffled bowl electric purple
- 103 Nwood 8.5" ice blue Peacocks ruffled bowl RARE
- 104 Nwood 8.5" custard Peacocks ruffled bowl
- 105 Nwood 8.5" blasting yellow mari. Peacocks ruffled bowl. A dandy. The Best!!!
- 106 Nwood 8.5" Peacocks dark pumpkin mari ruffled bowl Ribbed back
- 107 Fenton blue Atlantic City 1911 Elks bell- Scarce
- 108 Fenton 7" blue 1911 Atlantic City Elk plate. Wonderful detail & color.
- 109 Fenton 7" mari. 1910 Detroit Elks ruffled bowl One of 4 known. VERY RARE
- 110 Fenton 7" green 1910 Detroit Elks bowl- Another rare color!
- 111 Fenton 7" amethyst 1910 Detroit Elks bowl
- 112 Fenton 7" blue 1910 Detroit Elks Ruffled Bowl All Four known colors of ruffled Elk bowls in a row. All with exceptional pressing!
- 113 Fenton Celeste blue Persian Medallion bon bon. from Rod Kaps collection, RARE!
- 114 Fenton 6" celeste blue square Open Edge hat from Rod Kaps collection
- 115 Fenton white square Open Edge hat
- 116 Fenton Celeste Horse Medallion footed 8-ruffled bowl. Another top rarity! Not many known
- 117 Fenton celeste blue Vintage 3/1 edge 10" bowl. OMG!! This is a MUST!
- 118 Fenton cherry red Cherry Circles 2-handled bon bon. RED RED RED!
- 119 Fenton pumpkin mari. Cooleemee, NC plate VERY RARE PLATE AND KILLER!
- 120 Fenton AO 7" Vintage round bowl. Rare size
- 121 Imperial Grape emerald green water pitcher. Has minor buff spot on base. Who Cares!!!
- 122 Imperial Grape electric purple water pitcher Wonderful color!
- 123 Imperial elec. purple Lustre Rose water pitcher.
- 124 Imperial elec. purple Diamond Lace water pitcher Beautiful! Nothing common about the color on this one!
- 125 Nwood lime green G & C footed ferner. Rare! Bruise in base.
- 126 Nwood IB G & C footed ferner. Dark IB. Wonderful

- 127 Nwood elec. purple G & C footed ferner Smokin Killer irid!!!
- 128 Nwood white G & C footed ferner Talk about an awesome line of G&C ferners! WOW
- 129 Nwood elec. blue Peacock at Fountain fruit bowl This is the best of the best!
- 130 Dugan electric purple S-Repeat 14 pc. punch set. This does have a Couple minor flakes on edge of bowl. The rarity and beauty will take care of that!
- 131 Dugan white Many Fruits 8-pc. punch set VERY FROSTY AND RARE!
- 132 Dugan elec. purple Garden Path Vt. chop plate Mochel Collection. This is as good as you will see any piece of Dugan!
- 133 Dugan purple Pony bowl. As close to electric as you'll find one of these!!!
- 134 Dugan purple Elks 8 ruffled nappy. Extremely rare. Judy Maxwell collection. Only a couple of this shape known.
- 135 Dugan elec. purple Petal & Fan large ruffled bowl. Stretch effect irid. Bright yellow background. Rod Kaps collection.
- 136 Dugan elec. purple Heavy Grape square ruffled bowl. Only one we have seen like this. Blasting electric!
- 137 Dugan elec. purple Ski Star 10" bowl. Yellow irid. w/ blue
- 138 Dugan elec. purple Cherries ft'd 10-ruffle bowl
- 139 Dugan 9" elec. purple Round Up low ruffled plate/ bowl. Tremendous color. Buy it no matter what!!! WOW!
- 140 Dugan 8.5" elec. purple Flower & Frames dome footed bowl. A Looker!!!
- 141 Dugan elec. purple 7" Six Petals 6-ruffle bowl
- 142 Dugan radium 8" elec. purple Grapevine & Lattice plate. small epoxy on back of one point. This WILL NOT MATTER on this plate. Widest plate known. Beautiful!
- 143 Dugan purple Butterfly & Tulip footed bowl w/electric highlights. Very good looking bowl!
- 144 Dugan elec. purple 6-ruffle Farm Yard bowl w/cherry red Stretch irid. RARE
- 145 Dugan 10" peach opal Heavy Grape ruffled bowl.
- 146 Dugan Mari 6" Malaga Round Nut Bowl
- 147 Dugan elec. purple Heavy Iris water pitcher w/yellow iridescence around top
- 148 Dugan frosty white Heavy Iris 7 pc. water set As good as you will ever find. WELL MATCHED SET!
- 149 Nwood 8.5" AO Stippled Strawberry ruffled bowl. Wonderful dark pink iridescence. Butterscotch, RARE
- 150 Nwood 8.5" IB Stippled Strawberry ruffled bowl Couple pin heads on tips. Only a couple known.
- 151 Nwood 8.5" IG Stippled Strawberry ruffled bowl. One shade from Lime Green.
- 152 Nwood 8 Renninger blue Stippled Strawberry ruffled bowl. Fantastic color!!!
- 153 Nwood 8.5" pastel mari. Stippled Strawberry ruffled bowl.
- 154 Nwood 8.5" purple Stippled Strawberry ruffled bowl
- 155 Nwood 8.5" mari. Strawberry ruffled bowl
- 156 Nwood 8.5" elec. green Strawberry bowl w/plain back. Beautiful blue color.
- 157 Nwood 8.5" elec. purple Strawberry bowl w/BWB
- 158 Nwood 8.5" peach opal Strawberry ruffled bowl w/ BWB. Opal on the tips
- 159 Nwood 9" odd light green Strawberry plate w/BWB. A shade from apple green.
- 160 Nwood 9" radium mari. Strawberry plate w/BWB. Stunning!!! Mirror like!
- 161 Fenton 9" mari. on moonstone Holly 8-ruffled bowl. RARE
- 162 Fenton 9" red 8-ruffled Holly bowl. Red Red
- 163 Fenton 8.5" Ice Green Holly 6 ruffle bowl. Only one reported and has Outstanding Pastel irid. Cyza collection.
- 164 Fenton 9" blue Holly plate w/electric highlights
- 165 Fenton 9" bright mari. Holly plate w/pink & yellow irid. This plate is off the charts AWESOME! What WAS the record for this plate??? LOL!
- 166 Fenton 9" amber Holly plate w/stretchy iridescence RARE!
- 167 Fenton 9" blue Captive Rose plate
- 168 Fenton 9" dark mari. Thistle plate. Best one we've ever seen
- 169 Fenton 9" electric green Thistle plate. WONDERFUL PLATE!
- 170 Fenton 9" AO Peacock & Grape 8-ruffled bowl One of 3 known. Great color!
- 171 Fenton 8.5" PO Peacock and Grape 8-ruffle bowl Another VERY RARE bowl
- 172 Fenton mari. on moonstone Peacock & Grape 8-ruffle bowl.
- 173 Fenton mari. Peacock & Grape plate. Maxwell collection. Outstanding
- 174 Fenton 8.5" AO Dragon & Lotus 8-ruffle bowl
- 175 Fenton 9" cherry red Dragon & Lotus 8-ruffled bowl. One of the best ones you will ever see!!
- 176 Fenton 8.5" Celeste blue Orange Tree ICS bowl w/Tree Trunk center. Extremely Rare & Extremely beautiful!!
- 177 Fenton 8" mari. on moonstone Orange Tree ICS bowl Super clean!!! Looks pastel
- 178 Fenton 8" mari. on moonstone Orange Tree 8-ruffle bowl.
- 179 Fenton 8.5" cherry red Orange Tree 8-ruffle bowl. From Maxwell collection.
- 180 Fenton IG Orange Tree plate with Tree Trunk center Top shelf pastel iridescence on this one. Wonderful pressing too. Incredible!!!

- 181 Fenton 9" blue Orange Tree plate, Stacy Wills collection
- 182 Fenton blue Kittens 4-sided plate-Four Kittens
- 183 Fenton mari. on moonstone Peacock at Urn 8-ruffled bowl. Looks like carved ivory.
- 184 Fenton emerald green Peacock at Urn ruffled bowl. Another break out the checkbooks!!!
- 185 Fenton 8.5" blue Peacock at Urn 6-ruffle bowl
- 186 Fenton 9" elec. blue Peacock at Urn plate. Just an insane plate!
- 187 Fenton radium pumpkin mari. Peacock at Urn plate
- 188 Fenton 9" white Peacock at Urn plate w/pink irid
- 189 Fenton 8.5" blue Peacock at Urn ICS bowl. Great pressing!!!
- 190 Fenton 8.5" green Peter Rabbit 8-ruffle bowl. RARE!
- 191 Fenton 8.5" violet blue Peter Rabbit ICS bowl From Joyce Seale collection. Really cool color!
- 192 Fenton 9" blue Peter Rabbit plate- RARE
- 193 Fenton 9" dark mari. Peter Rabbit plate- VERY RARE
- 194 Fenton 11" elec. blue Panther centerpiece bowl. From Morgan collection.
- 195 Fenton 11" pastel mari Panther centerpiece bowl. From Maxwell collection
- 196 Fenton 9.5" blue Panther master berry bowl
- 197 Fenton 10" pumpkin mari. Little Flowers chop plate RARE
- 198 Fenton 10.5" ginger ale Cherry Chain chop plate. With Orange Tree back- Odd color
- 199 Fenton 10.5" frosty white Cherry Chain chop plate. Has crazy beautiful pink & green iridescence!!!
- 200 Nwood IG Grape & Cable mid-size punch bowl and base. From Marie Capps collection
- 201 Nwood lime green Peacock at Fountain 8-pc. punch set. 1 cup has crack.. Cups lean Ice Green as they all do
- 202 Nwood AO Tree Trunk mid-size vase. The most pastel one out there. Amazing vase and VERY RARE!
- 203 Nwood lime green mid-size Tree Trunk vase. From the Rick Stockhill collection
- 204 Nwood dark IB mid-size Tree Trunk vase. From the Rick Stockhill collection
- 205 Nwood green mid-size Tree Trunk vase. From the Rick Stockhill collection
- 206 Nwood electric purple mid-size Tree Trunk vase. From the Rick Stockhill collection
- 207 Nwood frosty white mid-size Tree Trunk vase. From the Rick Stockhill collection
- 208 Nwood radium pumpkin mari mid-size Tree Trunk vase From the Rick Stockhill collection
- 209 Nwood 10" Aqua Opal Tree Trunk vase
- 210 Nwood 10" ice green Tree Trunk vase
- 211 Nwood 10" elec. purple Tree Trunk vase
- 212 Nwood 11" AO Four Pillars vase
- 213 Nwood 11" AO Diamonds vase
- 214 Nwood 10" ice green Thin Rib vase
- 215 Nwood 11" elec. green Thin Rib vase
- 216 Nwood 18" green Tree Trunk funeral vase Tremendously RARE! AWESOME looking vase!
- 217 Nwood 19.5" elec. blue Tree Trunk funeral vase BLASTING IRID!
- 218 Nwood 18" purple Tree Trunk funeral vase Unruffled top-not crimped, Not sure I have seen this before.
- 219 Nwood 13.5" purple elephant foot Tree Trunk vase. Rare!
- 220 (2) 18.5 Fenton frosty white Rustic funeral vases. Both SUPER!
- 221 West. 8" blue opal Concave Flute JIP vase. Extremely rare!
- 222 West. blue opal 8" Corinth vase- Scarce
- 223 Imperial elec. purple Loganberry vase
- 224 Imperial elec. purple Beaded Bulls Eye vase Super bright yellow irid.
- 224a Fenton amber opal (Cameo) Peacock Garden vase. A Very RARE vase from the 1920's. Only one we know of reported.
- 225 Imperial 9" mari. Shell & Sand plate. Outstanding iridescence. From Maxwell collection
- 226 Imperial 9" smoke Shell & Sand plate. Rare color w/ pink shells
- 227 Imperial Pansy pickle dish-light pastel smoke
- 228 Imperial Pansy pickle dish-electric purple
- 229 Imperial Grape 5" elec. purple sauce
- 230 Imperial 9" elec. purple Lustre Rose plate from Stockhill collection. Bright yellow irid.
- 231 Imperial 5" purple Scroll Embossed sauce w/File Ex Bright yellow irid.
- 232 Imperial elec. purple Scroll Embossed large compote
- 233 Imperial elec. purple 11" Grape ruffled bowl Super!
- 234 Imperial 8.5" elec. purple Pansy ruffled bowl. W/ yellow irid.
- 235 Imperial 8.5" elec. purple Pansy ruffled bowl
- 236 Nwood 8" pastel AO Sunflower ruffled bowl From Poucher collection. One of only 3 known. This is a true Northwood Rarity!
- 237 Nwood 8.5" emerald green Sunflower flared bowl WOW!
- 238 Nwood 8.5" blasting elec. purple Sunflower bowl. Buy it!!
- 239 Nwood 8.5" pastel mari. Sunflower flared bowl. Bright yellow irid.
- 240 Northwood 7" IG Fruits & Flowers bowl
- 241 Nwood 9" lime green opal Rose Show plate. VERY RARE PLATE! BEAUTIFUL!
- 242 Nwood 9" emerald green Rose Show plate Joyce Seale collection
- 243 Nwood 9" elec. purple Rose Show plate As good as you are going to find!!!

- 244 Nwood 9" pastel mari. Rose Show plate. Stunning iridescence.
- 245 Nwood 9" electric blue Rose Show plate HOLY SMOKES!
- 246 Nwood 9" green Poppy Show plate Scarce
- 247 Nwood 9" elec. blue Poppy Show plate. Stunning!
- 248 Nwood AO Poinsettia & Lattice ruffled footed bowl EXTREMELY RARE BOWL!!
- 249 Nwood 8.5" horehound Poinsettia and Lattice footed bowl. Just a couple known.
- 250 Nwood IB Poinsettia & Lattice ruffled footed bowl They don't get any better. Judy Maxwell collection
- 251 Nwood frosty white Poinsettia & Lattice ruffled footed bowl. Could be the toughest color to find
- 252 Nwood 8.5" elec. blue Poinsettia and Lattice footed bowl. TOP NOTCH!
- 253 Nwood 8.5 elec. purple Poinsettia and Lattice footed bowl. YEP, SWEET!
- 254 Nwood 8.5" dark pumpkin fantastic mari. Poinsettia and Lattice footed bowl
- 255 Nwood 9 Poinsettia & Lattice footed plate-custard pink stain
- 256 Nwood 9" Poinsettia & Lattice footed plate-custard blue stain
- 257 Nwood 9" ice blue stippled Three Fruits plate. From Marie Capps collection. RARE!
- 258 Nwood 9" elec. purple Stippled Three Fruits plate. The Best!!!!
- 259 Nwood 9" purple Three Fruits plate w/plain back. Beautiful stretch irid. Very flat
- 260 Nwood AO 8 1/2" Stippled Three Fruits bowl
- 261 Nwood AO Three Fruits Stippled ruffled bowl Pastel.
- 262 Nwood apple green 8.5" Stippled Three Fruits bowl w/pinks, blues & yellow irid. This is the only bowl I know of...
- 263 Nwood 8.5" Sapphire Three Fruits Stippled Ruffled Bowl. Looks sapphire.
- 264 Nwood 8.5" elec. blue Three Fruit Stippled bowl
- 265 Nwood 8.5" smoke Three Fruits ruffled bowl. Plain back. Extremely Rare!
- 266 Nwood pearl custard Nutmeg Three Fruits spatula footed bowl w/smooth edge
- 267 Nwood 8.5"elec. purple Three Fruits spatula footed bowl
- 268 Fenton blue Apple Tree water pitcher with green & red iridescence on apples. Super!
- 269 Fenton Fluffy Peacock purple water pitcher
- 270 Fenton Fluffy Peacock fantastic pumpkin mari. water pitcher. Color top to bottom
- 271 Nwood IB Peacock at Fountain water pitcher. Beautiful dark ice blue. From Rick Stockhill collection.
- 272 Nwood elec. blue Peacock at Fountain water pitcher
- 273 Nwood dark mari. G & C sweet meat Tiny flake on base. Ruth Phillips collection
- 274 Nwood sapphire Oriental Poppy tankard EXTREMELY RARE! Awesome color on this great tankard
- 274a 6 Nwood Ice blue Oriental Poppy tumblers. selling as a set of 6
- 275 Nwood elec. Purple Dandelion tankard
- 276 Nwood 9" Heart & Flower PCE bowl green Pretty close to emerald!
- 277 Nwood 9" Heart & Flower PCE electric blue bowl Another jaw dropper!
- 278 Nwood 9" pumpkin Mari Heart & Flower ruffled bowl
- 279 Nwood 8.5" IB Heart & Flowers ruffled bowl
- 280 Fenton 8.5" purple Concord 3/1 edge bowl from the Tilberg collection
- 281 Fenton 8.5" emerald green Concord 3/1 edge bowl
- 282 Fenton 9" electric purple Lotus & Grape plate
- 283 Fenton 5" green Peacock Tail tri-corner nappy
- 284 Fenton 10" powder blue Two Flowers footed bowl w/bright pastel irid. Couple flea bites on toe. Beautiful!!! Who cares!!!
- 285 Fenton 9" blue Persian Medallion plate
- 286 Fenton 9" blue Persian Medallion plate w/Rare Bearded Berry back. One of 3 known. Last sold in 2007.
- 287 Fenton 9" purple Persian Medallion plate w/Rare Bearded Berry back. One of 2 known.
- 288 Fenton Stag & Holly 10" ICS footed bowl- radium blue-Very Rare!
- 289 Fenton Stag & Holly 10" ICS footed bowl- pastel marigold
- 290 Fenton Stag & Holly 10" ICS footed bowl- electric blue
- 291 Fenton blue Stag & Holly footed fruit bowl
- 292 Nwood 8.5" sapphire Three Fruits Stippled bowl. Looks sapphire-no overlay!
- 293 Nwood 8.5" green/emerald G & C stippled ruffled bowl. Marie Capps collection.
- 294 Nwood 8.5" AO G&C Stippled PCE bowl TONS OPAL!
- 295 Nwood 8.5" elec. blue G & C stippled PCE bowl
- 296 Nwood elec. purple G & C ruffled bowl w/plain back
- 297 Nwood 9" purple G & C plate w/plain back. Radium look!!!
- 298 Nwood 9" radium purple G & C plate w/plain back A Looker!!!
- 299 Nwood Aqua Opal G&C stippled bon bon RARE SOUGHT AFTER ITEM
- 300 Nwood purple G& C dresser tray
- 301 Nwood green Acorn Burr complete table set check condition
- 302 Nwood purple Singing Birds table set

- 303 Nwood Persian blue opal Poppy pickle dish
Tremendously rare! Some would call this "Powder
Blue Opal" but this does lean towards Persian Blue.
- 304 Nwood white Poppy pickle dish
- 305 Nwood mari on moonstone Poppy pickle dish Bright
yellow irid. Bev Franzen collection
- 306 Nwood 8.5" AO Good Luck ruffled bowl BLASTING
PASTEL!
- 307 Nwood 8.5" Sapphire Good Luck Ruffled Bowl. Bright
Irid!
- 308 Nwood 8.5" elec. blue Good Luck bowl Ribbed back.
You'll never find a better one
- 309 Nwood 8.5" elec. green Good Luck bowl w/BWB some
would call this emerald!
- 310 Nwood 8.5" purple Good Luck plate w/BWB
- 311 Nwood 9" emerald green Good Luck plate. VERY
ATTRACTIVE PLATE!
- 312 Nwood 9" mari. Good Luck plate
- 313 Nwood 8.5" Embroidered Mums bowl electric blue
SMOKIN"
- 314 Nwood green Raspberry milk pitcher
- 315 Nwood emerald green Singing Birds water pitcher.
- 316 Nwood elec. purple Singing Bird water pitcher.
Incredible color for this!!! WOW!
- 317 Nwood purple Springtime water pitcher.
- 318 Nwood green Springtime water pitcher. Very scarce &
pretty.
- 319 Nwood mari. Springtime water pitcher
- 320 Nwood dark mari. G & C banana boat
- 321 Nwood IB G & C banana boat
- 322 Nwood crystal decorated G & C banana boat
- 323 Nwood purple G & C banana boat
- 324 Nwood blue G & C banana boat
- 325 Nwood custard pink stain stippled G & C banana boat
- 326 Nwood cottage painted custard G & C stippled banana
boat
- 327 Nwood pastel mari. G & C stippled banana boat
- 328 Topaz Opal Decorated Dancing with Veils Vase
- 329 Fenton PO Dancing with Veils Ruffled Vase
- 330 Fenton Sapphire Blue Dancing Veils Vase