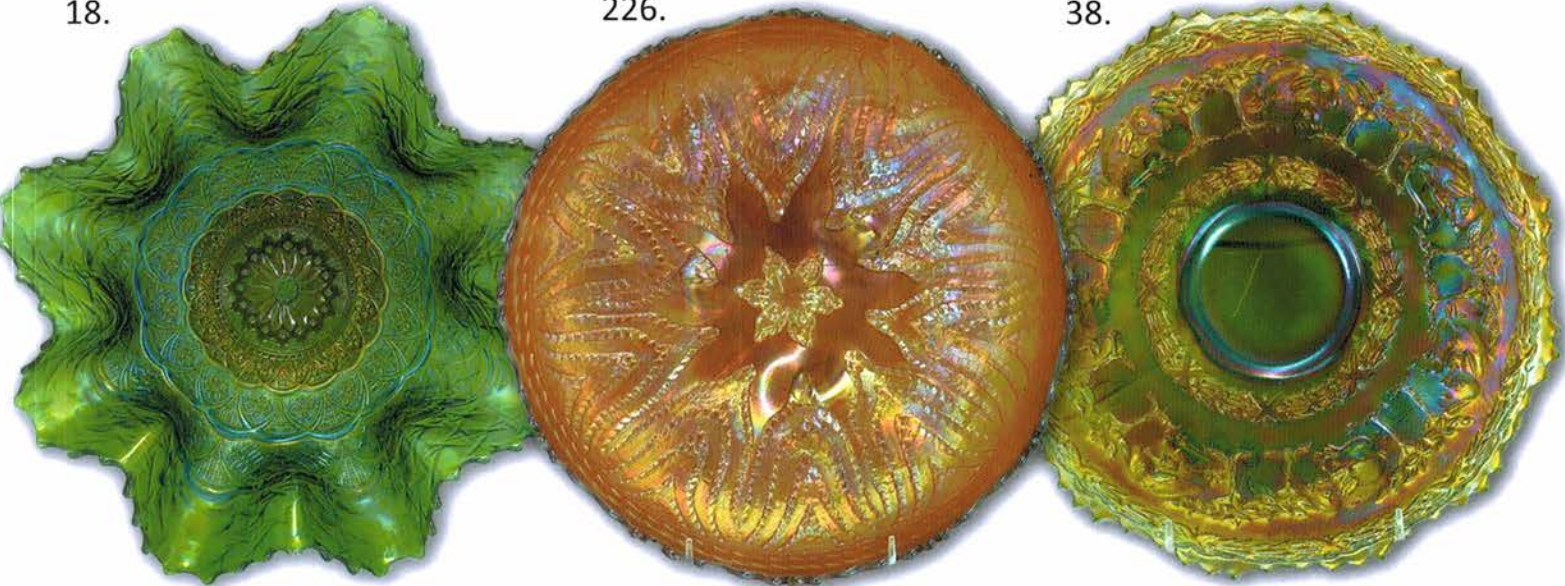


18.

226.

38.



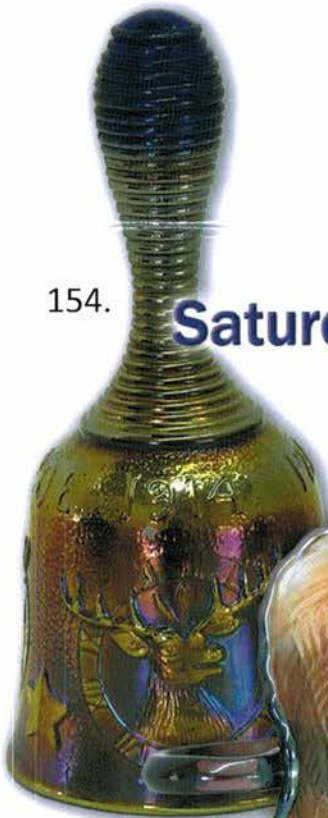
*The Werner Collection*

# Carnival Glass 2017 Auction

154.

**Saturday, October 28**  
**9:30 a.m.**

**Senior Activity Center**  
**Mason City, Iowa**



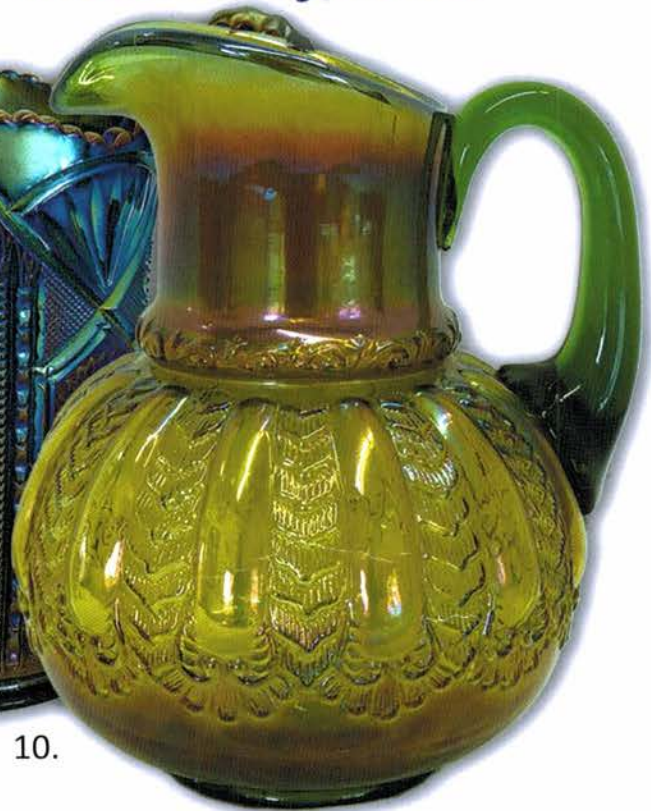
80.



29.



10.



**Seeck Auctions**  
Jim & Jan Seeck  
641-424-1116



**SATURDAY, OCTOBER 28, 2017 — 9:30 A.M.**

Jim & Jan Seeck

**Senior Activity Center**

641-424-1116

326 Fourth Street NE, Mason City, Iowa

★ **ABSENTEE and LIVE BIDDING is available on-line through Auction Flex at: [www.seeckauction.com](http://www.seeckauction.com)**

★ **NO BUYER'S PREMIUM -- EMAIL: [jimjan@seeckauction.com](mailto:jimjan@seeckauction.com)**

**Preview Friday, October 27 3 - 6 p.m.**

***THE WERNER COLLECTION***

Seeck Auctions is pleased to be selling the Arlene and Chris Werner collection of Carnival Glass from California. Arlene and Chris are active in the Southern California Club and have put together a beautiful collection of glass over the

past few years. They were quality buyers for beauty and rarity. As a result, their collection is fantastic. Enjoy a fun fall day of Carnival Glass in Mason City!

**LODGING**

Mason City: Holiday Inn Express – (641)424-1200; Quality Inn – (641)423-4444; Country Inn & Suites – (641)423-1770; Super 8 – (641)423-8855; Historic Park Inn Hotel – (641)422-0015 Hampton Inn – (641)435-7500; Clear Lake: AmericInn – (641)357-8954; Best Western Holiday Lodge (641)357-5253.

**Terms:** Cash or Check, VISA, MasterCard and Discover accepted w/proper ID. **4% Clerking Fee** on all purchases made using credit cards. Announcements made day of sale take precedence over any printed information.

**ABSENTEE BIDDING OPTIONS**

- 1) **Call us by phone at:** (641) 424-1116
- 2) **Prebid: Enter your bids from our website into our online catalog through the Auction Flex system.**
  - *An exciting advantage of entering your bids online yourself, is the option to be notified by email if you are outbid on an item. You will know when you are outbid on an item and you can increase your bid on that item or bid on something else.*
- 3) **Live Phone Bidding: Is available on pieces with an estimated sale price of \$500 or more.**  
If you would like to participate in live phone bidding, contact us by **the Thursday before the auction, October 26.**
- 4) **Real-time Bidding:** Bid live during the auction through Auction Flex live webcast bidding.

**There is a \$7 handling charge for each successful bid. Shipping and insurance charges are additional.**

Bidders will be notified by phone/email if their bid(s) are successful. This will be done 1 - 3 days after the auction.

**BID INCREMENTS:**

\$1 - \$100/\$5	\$100 - \$200/\$10	\$200 - \$700/\$25	\$700 - \$1,500/\$50
\$1,500 - \$3,000/\$100	\$3,000 - \$5,000/\$250	\$5000+	Auctioneer's Discretion

- \_\_\_\_\_ 1. Heavy Grape 7" round bowl - purple - super pretty
- \_\_\_\_\_ 2. Heavy Grape Variant 7" round bowl - marigold - does not have Diamond Quilted pattern on side, very rare
- \_\_\_\_\_ 3. M'burg Little Stars 7" ruffled bowl - green - satin
- \_\_\_\_\_ 4. M'burg Hanging Cherries 7" ruffled bowl - amethyst - radium & nice
- \_\_\_\_\_ 5. Persian Medallion hair receiver - marigold
- \_\_\_\_\_ 6. Scroll Embossed ruffled sauce w/File back - purple - electric
- \_\_\_\_\_ 7. Carnival Hobstar 4 pc. table set - marigold - pretty matching set
- \_\_\_\_\_ 8. Holly & Berry 7" ruffled bowl - purple - super pretty!
- \_\_\_\_\_ 9. Scroll Embossed deep round bowl - purple - nice
- \_\_\_\_\_ 10. **M'burg Gay Nineties water pitcher - green - one of 2 that I know of, fantastic, from the Poucher collection, a great opportunity**
- \_\_\_\_\_ 11. Persian Medallion crimped edge lg size ruffled compote - marigold - nice
- \_\_\_\_\_ 12. **Hearts & Flowers 9" plate w/ribbed back - purple - this is a beauty!**
- \_\_\_\_\_ 13. **Hearts & Flowers 9" plate w/ribbed back - white - another rare plate w/very pretty irid.!**
- \_\_\_\_\_ 14. **Hearts & Flowers 9" plate w/ribbed back - ice blue - very scarce & highly desired**
- \_\_\_\_\_ 15. **Hearts & Flowers 9" plate w/ribbed back - green - very rare color, nice**
- \_\_\_\_\_ 16. **Hearts & Flowers 9" plate w/ribbed back - marigold - dark & super**
- \_\_\_\_\_ 17. Drapery 8 1/2" vase - ice green - nice
- \_\_\_\_\_ 18. **Persian Garden 11 1/2" ruffled bowl - emerald green - a premier piece of Carnival Glass, first it is an extremely rare color for Dugan, second, it has outstanding irid., third, this piece spent time in the Corning Museum, a top piece in the hobby**
- \_\_\_\_\_ 19. Wild Rose Open Edge nut bowl - purple - nice
- \_\_\_\_\_ 20. **Poppy Show 9" plate - green - very pretty plate, scarce color**
- \_\_\_\_\_ 21. **Poppy Show 9" plate - purple - another scarce color, very pretty**
- \_\_\_\_\_ 22. **Poppy Show 9" plate - marigold - dark, nice**
- \_\_\_\_\_ 23. Flowers & Frames tri-cornered crimped edge dome ftd bowl - purple - super Dugan!
- \_\_\_\_\_ 24. **M'burg Ohio Star vase - green - many would call it emerald green - fantastic example, irid. is beautiful**
- \_\_\_\_\_ 25. **M'burg Ohio Star vase - marigold - dark w/good color from top to bottom, super irid.**
- \_\_\_\_\_ 26. Orange Tree powder jar - green - extremely rare color & fantastic! this is a beauty, does have nicks on the base and tiny nicks on rim of lid (who cares)
- \_\_\_\_\_ 27. **Garden Path Variant chop plate - purple - super rare & super nice, has small chips on base**
- \_\_\_\_\_ 28. Two Flowers spt ftd ruffled bowl - amberina - rare color
- \_\_\_\_\_ 29. **Chatelaine water pitcher - purple - super example, beautiful pitcher**
- \_\_\_\_\_ 30. Pair of Chatelaine tumblers - purple - both have very minor nicks on edge of base, typical, both are beautiful
- \_\_\_\_\_ 31. **J.N. Ledford Souvenir of Cooleemee, N.C. / Heart & Vine 9" plate - marigold - might be one of the prettiest ones I've seen, extremely rare advertising**
- \_\_\_\_\_ 32. M'burg Peacock 10" ruffled bowl - amethyst - radium, scarce
- \_\_\_\_\_ 33. **Stippled Three Fruits 9" plate w/ribbed back - lime green - extremely rare plate, I know of 3, super pretty, a top piece**
- \_\_\_\_\_ 34. **Stippled Three Fruits 9" plate w/ribbed back - blue - fantastic, another beauty**
- \_\_\_\_\_ 35. **Stippled Three Fruits 9" plate w/ribbed back - marigold - very pretty irid.**
- \_\_\_\_\_ 36. **Mikado ruffled compote - green - very rare color & irid. is outstanding**
- \_\_\_\_\_ 37. Luster Rose fernery - amberina - unique w/ amber colored base w/the flowers on the outside having a reddish tint
- \_\_\_\_\_ 38. **Peter Rabbit 9" plate - green - super pretty example of this rare plate**
- \_\_\_\_\_ 39. Holly 9" plate - marigold - very pretty example
- \_\_\_\_\_ 40. **Vintage 9" IC shaped bowl - celeste blue - very rare bowl in the IC shape, has stretchy irid.**
- \_\_\_\_\_ 41. Australian Thunderbird lg size ruffled bowl - dark - very nice
- \_\_\_\_\_ 42. Australian Kingfisher lg size ruffled bowl - dark - scarce

- \_\_\_ 43. Australian Swan lg size ruffled bowl - dark - very nice
- \_\_\_ 44. Australian Swan ruffled sauce - dark - very pretty (yes, David, it is a “nappy”)
- \_\_\_ 45. **Strawberry Scroll tankard water pitcher - marigold - dark, super, a very pretty example for these**
- \_\_\_ 46. **M’burg Whirling Leaves tri-cornered crimped edge bowl - green - radium, super, very scarce**
- \_\_\_ 47. **M’burg Whirling Leaves tri-cornered crimped edge bowl - amethyst - radium & also nice, two in one sale, Wow!**
- \_\_\_ 48. **Rose Show 9” plate - lime green opal - very rare color with pretty irid., have not sold one in a while**
- \_\_\_ 49. Rose Show 9” plate - marigold - dark, pretty
- \_\_\_ 50. Imperial Grape water carafe - purple - super
- \_\_\_ 51. **Orange Tree w/trunk 9” plate - amethyst - rare color & pretty**
- \_\_\_ 52. Orange Tree w/trunk 9” plate - green - another rare color
- \_\_\_ 53. Orange Tree 9” plate - blue
- \_\_\_ 54. Orange Tree 9” plate - marigold - dark, pretty
- \_\_\_ 55. **Peacock at the Fountain 8 pc. punch set - purple - super pretty, always in demand**
- \_\_\_ 56. Five Hearts dome ftd round bowl - marigold - scarce pattern
- \_\_\_ 57. **NUART Homestead chop plate - purple - super pretty w/great mold**
- \_\_\_ 58. **Stippled Peacocks PCE bowl w/ribbed back - marigold - lots of pink irid., a beauty**
- \_\_\_ 59. **Fashion rose bowl - purple - extremely rare & pretty**
- \_\_\_ 60. **Hearts & Flowers ruffled compote - green - scarce color, pretty**
- \_\_\_ 61. Hearts & Flowers ruffled compote - aqua opal - pastel, nice
- \_\_\_ 62. Hearts & Flowers ruffled compote - aqua opal - butterscotch, pretty
- \_\_\_ 63. Hearts & Flowers ruffled compote - marigold - lots of pink & yellow
- \_\_\_ 64. **M’burg 1910 Detroit Elks 3 in 1 edge bowl - amethyst - radium, rare & very nice, great opportunity**
- \_\_\_ 65. Morning Glory 17” funeral vase - marigold - dark from top to bottom
- \_\_\_ 66. **Panther ftd round centerpiece bowl - blue - extremely rare item, nice**
- \_\_\_ 67. Panther ftd round centerpiece bowl - marigold - dark, nice
- \_\_\_ 68. M’burg Zig Zag ruffled bowl - amethyst - radium, nice
- \_\_\_ 69. **Grape & Cable master IC bowl - ice green - very pretty irid. on this rare bowl**
- \_\_\_ 70. **M’burg Peacock at Urn giant compote - amethyst - satin & nice, quite rare**
- \_\_\_ 71. **Peacocks ruffled bowl w/ribbed back - aqua opal - very pretty bowl w/light butterscotch**
- \_\_\_ 72. Peacocks ruffled bowl w/ribbed back - purple - very pretty
- \_\_\_ 73. **Dragon & Strawberry ftd ruffled bowl - green - rare color, nice, highly desired piece**
- \_\_\_ 74. **Corn vase w/stalk base - marigold - fantastic!!!**
- \_\_\_ 75. **Dugan Heavy Grape lg ruffled bowl - purple - has a radium type irid., very different for these, pretty cool!**
- \_\_\_ 76. **Lotus & Grape ftd round 7” bowl - celeste blue - rare bowl & nice**
- \_\_\_ 77. Fantail ftd ruffled bowl - blue - pretty
- \_\_\_ 78. **Orange Tree hatpin holder - white - super rare color for these w/nice irid., very shallow sliver on side of one foot, typical**
- \_\_\_ 79. Orange Tree hatpin holder - blue - nice
- \_\_\_ 80. **M’burg Fruit Basket hddd bonbon - amethyst - one of M’burg’s rarest patterns, about a handful known, super nice, satin -from the Fenton Museum**
- \_\_\_ 81. **Tree Trunk 14” midsize vase - white - scarce, exceptional irid.**
- \_\_\_ 82. Tree Trunk 13” midsize vase w/ plunger base - marigold - hard to find with that base
- \_\_\_ 83. Stag & Holly lg size IC shaped ftd bowl - amethyst - rare color & super
- \_\_\_ 84. **Leaf Chain 9” plate - marigold - dark, super**
- \_\_\_ 85. Stippled Three Fruits ruffled bowl w/ribbed back - aqua opal - super bright & beautiful
- \_\_\_ 86. Stippled Three Fruits ruffled bowl w/ ribbed back - green - very rare color, not often sold, nice too!
- \_\_\_ 87. **Coin Dot 7” bowl - red - cherry red color w/red irid., red from a mile!**

88. M'burg Peacock master IC shaped bowl - amethyst - radium
89. **Daisy & Plume ruffled candy dish w/ Berry int.- lime green - rare color, pretty**
90. **Daisy & Plume ruffled candy dish w/ Berry int. - blue - super, only 3 known**
91. **Thistle 9" plate - amethyst - very rare plate & nice**
92. **M'burg Seacoast pin tray - green - always a collector's favorite, nice**
93. **M'burg Seacoast pin tray - amethyst - nice**
94. **Peacocks PCE bowl w/ribbed back - ice green - scarce color, very nice**
95. Peacocks PCE bowl w/ribbed back - ice blue - a bit silvery but scarce color
96. Peacocks PCE bowl w/ribbed back - lavender - scarce color, nice
97. Peacocks PCE bowl w/ribbed back - purple - pretty
98. **Three Row vase - marigold - dark, super, great example**
99. Stippled Good Luck ruffled bowl w/ribbed back - renninger blue - very pretty for a renninger example, highly desirable
100. **Holly IC shaped bowl - celeste blue - has stretchy irid., a beauty, rare example**
101. Heavy Grape master berry bowl - purple - a beauty
102. **Stippled Peacocks 9" plate w/ribbed back - blue - has slight stretch effect in the irid.**
103. **Poinsettia & Lattice ftd ruffled bowl - ice blue - pretty irid., scarce bowl**
104. Poinsettia & Lattice ftd ruffled bowl - blue - very pretty, scarce color
105. Poinsettia & Lattice ftd ruffled bowl - marigold - dark, super
106. **Drapery rose bowl - green - very pretty, extremely rare color to find**
107. **Butterfly & Berry hatpin holder - marigold - rare, rare, rare**
108. **Good Luck ruffled bowl w/ribbed back - sapphire - rare color, nice**
109. Good Luck ruffled bowl w/ribbed back - blue - electric & nice
110. Good Luck ruffled bowl w/ribbed back - marigold - pretty
111. Singing Birds butter dish - green - very scarce butter dish if you need it, one tiny nick on flat of bottom of lid
112. **Lotus & Grape bonbon - red - very hard to find**
113. Fanciful low ruffled bowl - purple - super pretty
114. **N's Dandelion tankard water pitcher w/ribbed int.- marigold - even from top to bottom, nice**
115. Peacocks 9" plate w/ribbed back - purple - nice
116. Peacocks 9" plate w/ribbed back - green - very nice example for this scarce color
117. Peacocks 9" plate w/ribbed back - marigold - dark, nice
118. **Luster Rose ftd round fruit bowl - purple-**
119. **Three Row Open Edge ruffled bowl - celeste blue - pretty irid., scarce**
120. **Rustic 18" funeral vase - marigold - pretty color, a dandy**
121. Good Luck PCE bowl w/ribbed back - blue-electric & nice
122. Good Luck PCE bowl w/BW back - marigold - pretty
123. **Wishbone & Spades chop plate - purple - collector's favorite, super pretty!**
124. Daisy & Drape flared out vase - aqua opal - scarce
125. **Horse Medallion ftd nut bowl - red slag - rare color**
126. N's Peacock at Urn master IC bowl - ice green - nice
127. N's Peacock at Urn IC sauce - ice green - matches master, nice
128. N's Peacock at Urn master IC bowl - blue - very pretty irid., beautiful
129. N's Peacock at Urn master IC bowl - purple - scarce
130. **M'burg Morning Glory tumbler - marigold - very rare, nice**
131. Peacock at the Fountain spooner - purple - has couple of chips at bottom
132. **Starflower water pitcher - blue - rare pitcher, highly desirable and very nice**
133. Poppy pickle dish - aqua opal - very scarce, nice
134. Poppy pickle dish - blue - nice
135. **M'burg Wild Rose kerosene lamp - green - 10 1/2" tall, 6 3/8" base, very pretty, always in demand**
136. Scroll Embossed 9" ruffled bowl w/File back - smoke - scarce color

- \_\_\_ 137. **Fanciful 9" plate - purple - super**
- \_\_\_ 138. Fanciful 9" plate - white - pretty irid.
- \_\_\_ 139. Persian Garden fruit bowl - purple - highly desirable
- \_\_\_ 140. Curled Rib 7 1/2" JIP vase - marigold
- \_\_\_ 141. **M'burg Seaweed 9" low IC shaped bowl green - some may call this a plate, satin, very rare**
- \_\_\_ 142. **Owl in Window hatpin - dark - lightly iridized, extremely rare**
- \_\_\_ 143. Stylized Scarab - amethyst or lavender - has light irid.
- \_\_\_ 144. **Belle hatpin - dark - has pretty irid.**
- \_\_\_ 145. Plumes and Buckle hatpin - dark - scarce
- \_\_\_ 146. Penstar hatpin - dark
- \_\_\_ 147. Sun's Up hatpin - dark - very hard to find dark
- \_\_\_ 148. Flying Bat hatpin - dark
- \_\_\_ 149. Star Center hatpin - dark
- \_\_\_ 150. Cherries hatpin - dark
- \_\_\_ 151. **Hearts & Flowers PCE bowl w/ribbed back - ice green - scarce**
- \_\_\_ 152. Ribbon Tie low 3 in 1 edge bowl - blue - very pretty
- \_\_\_ 153. **Concave Flute JIP 8 1/2" vase - blue opal - very scarce vase, nice**
- \_\_\_ 154. **1914 Parkersburg Elks bell - blue - extremely rare bell & nice, from the Fenton museum**
- \_\_\_ 155. Stippled Three Fruits Medallion spt ftd ruffled bowl - aqua opal - pastel, nice
- \_\_\_ 156. Three Fruits Medallion spt ftd ruffled bowl - purple
- \_\_\_ 157. **Embroidered Mums ruffled bowl w/ribbed back - aqua opal - great opal, rare bowl**
- \_\_\_ 158. M'burg Whirling Leaves ruffled bowl - amethyst - radium, super
- \_\_\_ 159. **Blackberry Open Edge 7" vase - marigold - scarce whimsey, short and squatty for these**
- \_\_\_ 160. Petal & Fan lg ruffled bowl - purple - very pretty, tiny nick on edge filled with epoxy
- \_\_\_ 161. **Blossomtime ruffled compote - green - pretty compote, scarce color**
- \_\_\_ 162. Grape & Cable banana boat - blue - scarce color
- \_\_\_ 163. Grape & Cable banana boat - green - nice - small nick on top edge
- \_\_\_ 164. **Thumbprint & Ovals vase - marigold - scarce, nice**
- \_\_\_ 165. Leaf Chain 7" ruffled bowl - red - epoxied chip on edge
- \_\_\_ 166. **Stippled Grape & Cable Variant PCE bowl w/ribbed back - aqua opal - butterscotch & nice, rare bowl**
- \_\_\_ 167. M'burg Trout & Fly 3 in 1 edge bowl - amethyst - satin, scarce
- \_\_\_ 168. **Wild Strawberry 10" ruffled bowl - lime green - very rare color with very pretty irid.**
- \_\_\_ 169. **M'burg Courthouse IC shaped bowl - amethyst - radium, very nice**
- \_\_\_ 170. **M'burg Courthouse ruffled bowl - amethyst - radium, very pretty**
- \_\_\_ 171. **Grape & Cable hatpin holder - green - many would call this emerald, a beauty**
- \_\_\_ 172. Four Flowers lg size ruffled bowl - purple - very pretty
- \_\_\_ 173. **File lg spittoon - marigold - 4" tall, 7" diameter, rare whimsey, pretty neat!**
- \_\_\_ 174. **Grape & Cable ftd round 8" bowl - celeste blue - rare shape & nice w/ stretchy irid.**
- \_\_\_ 175. Star of David ruffled bowl - purple - pretty
- \_\_\_ 176. Star of David ruffled bowl - marigold - dark, nice
- \_\_\_ 177. **Holly ruffled bowl - blue opal - very pretty, nice opal for these**
- \_\_\_ 178. Holly ruffled bowl - red - scarce
- \_\_\_ 179. **M'burg Sunflower pin tray - green - another nice M'burg piece**
- \_\_\_ 180. Oriental Poppy 7 pc. water set w/ribbed int. - purple - collector's favorite
- \_\_\_ 181. Captive Rose 9" plate - marigold - scarce
- \_\_\_ 182. **1914 Parkersburg Elks 7" plate - blue - very pretty example, rare & highly desirable**
- \_\_\_ 183. Scroll Embossed 9" plate - purple - very pretty
- \_\_\_ 184. **Orange Tree IC shaped bowl - red - very nice example and very hard to find in the IC shape**
- \_\_\_ 185. Peacock at the Fountain tumbler - green - super example, most would call it emerald
- \_\_\_ 186. Heavy Grape ruffled master berry bowl - purple - very pretty - small nick on back edge
- \_\_\_ 187. **Peacock Tail 9" plate - marigold - dark, super, very rare**

- \_\_\_ 188. Dogwood Spray tri-cornered crimped edge dome ftd bowl - purple - very pretty, typical minor pit on base
- \_\_\_ **189. Exchange Bank advertising round bowl - amethyst - pretty irid., scarce shape**
- \_\_\_ 190. N's Peacock at the Fountain water pitcher w/1 tumbler - blue - very pretty pitcher
- \_\_\_ 191. Holly ruffled hatshape - red - scarce
- \_\_\_ 192. M'burg Nesting Swan ruffled bowl - amethyst - radium, nice
- \_\_\_ **193. N's Grape Leaves ruffled bowl - ice blue - rare color w/pretty irid.**
- \_\_\_ 194. M'burg Peacock ruffled bowl - amethyst - radium, nice
- \_\_\_ 195. Strawberry 9" plate w/BW back - green
- \_\_\_ 196. Holly 9" plate - marigold
- \_\_\_ **197. M'burg Trout & Fly ruffled bowl - lavender - satin & super**
- \_\_\_ 198. Three Row Open Edge square shaped bowl - celeste blue - very scarce, nice - chip on back edge
- \_\_\_ 199. Stippled Good Luck ruffled bowl w/ribbed back - blue
- \_\_\_ 200. Peacocks ruffled bowl w/ribbed back - aqua opal - nice
- \_\_\_ **201. Hearts & Flowers ruffled bowl w/ribbed back - purple - super**
- \_\_\_ 202. Beaded Cable rose bowl - aqua opal - was tempted to call this blue opal, a different color
- \_\_\_ **203. Wishbone ftd ruffled bowl - blue - super pretty, electric**
- \_\_\_ 204. N's Thin Rib 11" vase - sapphire - rare vase, nice
- \_\_\_ **205. Apple Blossom Twigs ruffled bowl w/smooth edge - purple - pretty**
- \_\_\_ 206. Stippled Three Fruits PCE bowl w/ribbed back - green - tiny rough spot on point, rare color, pretty
- \_\_\_ 207. Peacock at the Fountain master berry bowl - marigold - nice
- \_\_\_ 208. Tornado lg size vase - green - scarce, chips on base
- \_\_\_ **209. Peacocks 9" plate w/ribbed back - purple - scarce**
- \_\_\_ **210. Peacocks 9" plate w/plain back - green - very pretty, scarce**
- \_\_\_ 211. Raspberry ruffled compote - purple - super pretty!
- \_\_\_ **212. Fenton Good Luck / Heart & Horseshoe ruffled bowl - marigold - very rare bowl & nice**
- \_\_\_ 213. Petal & Fan crimped edge 6" plate - purple - super pretty
- \_\_\_ **214. Good Luck 9" plate w/ribbed back - green - super nice plate in a scarce color**
- \_\_\_ 215. Ripple 11 1/2" vase - purple - has a pour spout on the side
- \_\_\_ 216. Springtime butter dish - green
- \_\_\_ **217. Peacock at the Fountain ruffled compote - blue - fabulous irid.!!**
- \_\_\_ 218. Floral & Grape water pitcher - amethyst - scarce, nice
- \_\_\_ 219. Round Up low ruffled bowl - purple - super pretty
- \_\_\_ 220. Diving Dolphins ruffled bowl - amethyst
- \_\_\_ **221. Illinois Soldiers & Sailors 7" plate - blue - super pretty, highly desirable, came from the Fenton Museum**
- \_\_\_ 222. Dragon & Lotus IC shaped bowl - red - scarce color
- \_\_\_ 223. N's Peacock at Urn master IC bowl - purple - missing irid. in spots
- \_\_\_ 224. Question Mark 6" ftd plate - purple - super pretty, scarce
- \_\_\_ 225. Stippled Good Luck ruffled bowl w/ribbed back - blue
- \_\_\_ **226. Dragon's Tongue IC shaped ftd bowl - marigold - absolutely super, extremely rare, a great one for the end of the auction!**

SEECK AUCTIONS  
P.O. BOX 377  
MASON CITY, IA 50401

PRESORTED  
FIRST CLASS MAIL  
US POSTAGE  
PAID  
MAIL EXPEDITORS



74.

T3 P1 19  
LEE MARKLEY  
BOX 306  
MENTONE IN 46539-0306



## 2017 CARNIVAL GLASS AUCTION

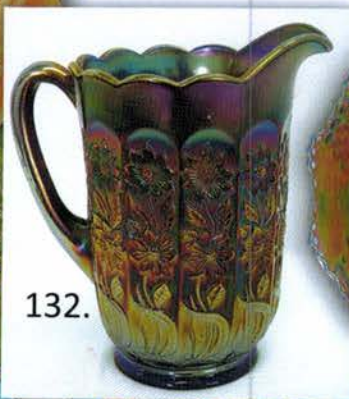
Sat., October 28

Senior Center Mason City, Iowa  
221.

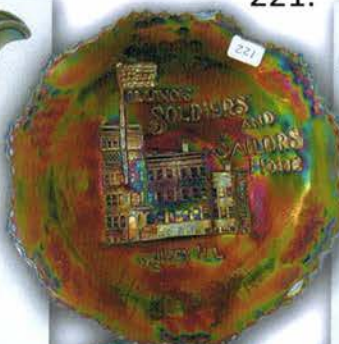


141.

123.



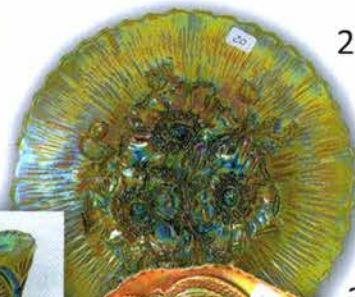
132.



221.



24.



20.



31.



113.



100.



64.



40.



20.