

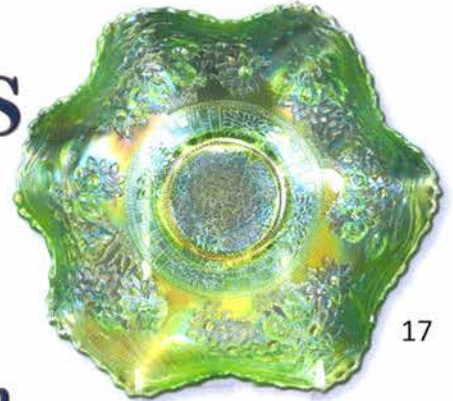
244



The May Collection &
The Morgan Collection

International Carnival Glass
Association Convention

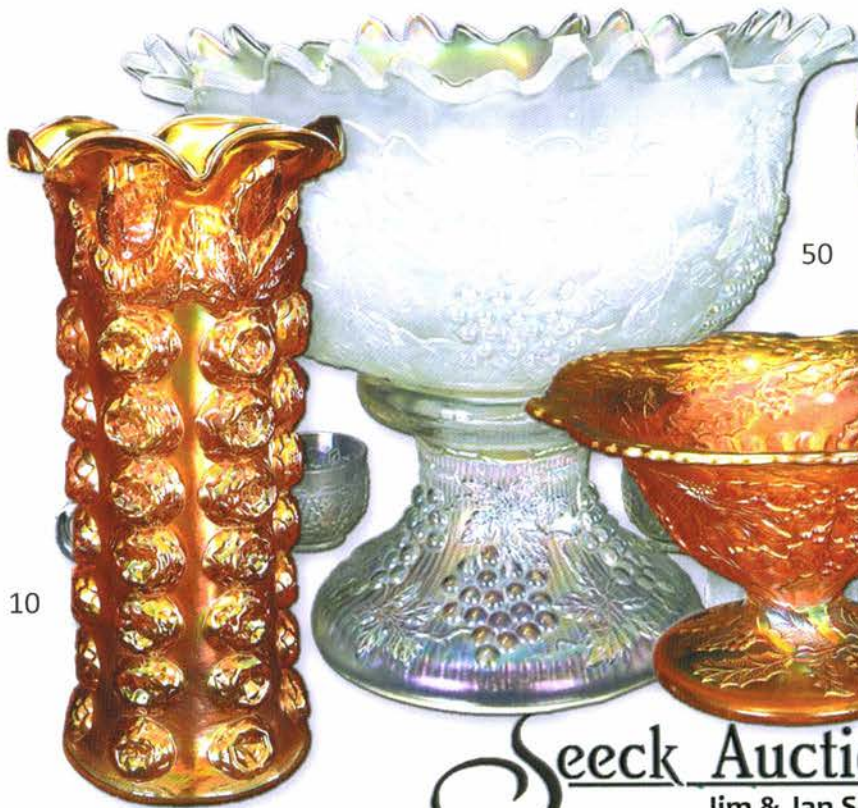
Carnival Glass 2018 Auction



17

Saturday, July 21 9:30 a.m.
Crowne Plaza - Indianapolis Airport
Indiana

Open to the Public



10

50

19



12



56

Seeck Auctions
Jim & Jan Seeck
641-424-1116



ICGA Convention Auction

Jim & Jan Seeck

Saturday, July 21, 2018 — 9:30 A.M.

641-424-1116

Crowne Plaza Indianapolis (Indiana) Airport Hotel

The May Collection/The Morgan Collection

Open to the Public **Preview:** Friday Evening

ABSENTEE and LIVE BIDDING is available on-line

through Auction Flex at: www.seeckauction.com

◆◆◆ **NO BUYER'S PREMIUM** ◆◆◆

EMAIL: jimjan@seeckauction.com

Seeck Auctions is pleased to be selling the Nancy and late Bernie May Collection and also additions from the Dorothy and Emmett Morgan Collection at the ICGA Convention this year. Have known both of

these couples for a long time and their glass is worth the trip! Come, have a great time at the convention or if you cannot make it, enter your bids online or bid live during the auction.

Convention and Lodging

Visit the ICGA Website: <http://www.internationalcarnivalglass.com>

If planning to stay at the hotel, reservations can be made by calling

(317)244-6861. **Online Group Code: ICG**

Terms: Cash or Check, VISA, MasterCard and Discover accepted w/proper ID. 4% Clerking Fee on all purchases made using credit cards. Announcements made day of sale take precedence over any printed information.

Indiana Auction License #AU09100184

ABSENTEE BIDDING OPTIONS

- 1) **Call us by phone at:** (641) 424-1116
- 2) **Prebid: Enter your bids from our website into our online catalog through the Auction Flex system.**
 - *An exciting advantage of entering your bids online yourself*, is the option to be notified by email if you are outbid on an item. You will know when you are outbid on an item and you can increase your bid on that item or bid on something else.
- 3) **Live Phone Bidding: Is available on pieces with an estimated sale price of \$500 or more.**
If you would like to participate in live phone bidding, contact us by **the Thursday before the auction, July 19.**
- 4) **Real-time Bidding:** Bid live during the auction through Auction Flex live webcast bidding.

There is a \$7 handling charge for each successful bid. Shipping and insurance charges are additional.

Bidders will be notified by phone/email if their bid(s) are successful. This will be done 1 - 3 days after the auction.

BID INCREMENTS:

\$1 - \$100/\$5	\$100 - \$200/\$10	\$200 - \$700/\$25	\$700 - \$1,500/\$50
\$1,500 - \$3,000/\$100	\$3,000 - \$5,000/\$250	\$5000+	Auctioneer's Discretion

- ___ 1. Luster Rose tumbler - purple
- ___ 2. Pinched Swirl rose bowl or vase - peach opal
- ___ 3. **Flute breakfast set - amber - extremely rare color, don't remember selling another set, sugar has minor rough spot on base**
- ___ 4. Flute breakfast set - purple - super pretty
- ___ 5. Horse Medallion 7" plate - marigold - very nice
- ___ 6. Windmill 9" round bowl - purple - pretty
- ___ 7. Windmill round sauce - purple - beautiful
- ___ 8. M'burg Blackberry Wreath tri-cornered sauce - marigold - radium
- ___ 9. Beaded Shell mug - purple
- ___ 10. **M'burg Rose Columns vase - marigold - fantastic! few look this beautiful, extremely rare**
- ___ 11. Persian Medallion lg size crimped edge compote - amethyst - nice
- ___ 12. **M'burg Hobstar & Feather giant rose bowl- green- very pretty example, a dandy**
- ___ 13. **M'burg Hobstar & Feather giant rose bowl - purple - another rarity, typical chip on bottom of one tooth**
- ___ 14. Honeycomb rose bowl - peach opal
- ___ 15. **Blackberry Block tankard water pitcher w/1 tumbler - blue - very pretty & highly desirable**
- ___ 16. **Blackberry Block 6 pc. tankard water set - marigold - great color from top to bottom**
- ___ 17. **Orange Tree w/trunk ruffled bowl - ice green- super pretty irid. on this extremely rare piece, most Fenton ice green does not have very pretty irid., this one does!**
- ___ 18. Orange Tree w/trunk ruffled bowl - marigold - dark & pretty
- ___ 19. Christmas compote - marigold - dark & beautiful, a collector's favorite
- ___ 20. Christmas compote - purple - super pretty, very rare, another favorite of collectors
- ___ 21. Three Fruits dome ftd ruffled bowl - white - nice
- ___ 22. M'burg Peacock sauce - green - radium & nice, hard to find in green
- ___ 23. **Poppy Show 9" plate - aqua opal - extremely rare plate, from the Whitley Collection**
- ___ 24. **Poppy Show 9" plate - ice green - rare, has minor spot of epoxy on poppy**
- ___ 25. Poppy Show 9" plate - purple - very rare & desirable
- ___ 26. **M'burg Hobnail spittoon - marigold - very pretty example of these, rare**
- ___ 27. **Ripple 13" funeral vase - amber - 4 3/4" base, this is an incredible vase, rare!**
- ___ 28. **Flute water pitcher - purple - fantastic, a beauty**
- ___ 29. Pair of Flute #2 tumblers - purple - super pretty ✓
- ___ 30. **Flute milk pitcher - purple - a very rare item & pretty** ?
- ___ 31. Lot of 4 Flute #1 tumblers - purple - all pretty
- ___ 32. **Rose Show 9" plate - lime green - sometimes called vaseline, epoxy on side of rose, super pretty!**
- ___ 33. **Rose Show 9" plate - ice green - this is super pretty, small chip on side of rose**
- ___ 34. Rose Show 9" plate - ice blue - pretty, tiny nick on rose
- ___ 35. **Rose Show 9" plate - emerald green - scarce color, heat check in base, minor nick on rose**
- ___ 36. **Rose Show 9" plate - purple - super pretty, tiny nick on rose & base**
- ___ 37. Rose Show 9" plate - blue - nice
- ___ 38. Rose Show 9" plate - white
- ___ 39. Dogwood Spray dome ftd ruffled bowl - purple - fantastic irid., a beauty! typical pinpoint on base (they all have this)
- ___ 40. Autumn Acorn ruffled bowl - blue
- ___ 41. Daisy & Drape flared out vase - aqua opal
- ___ 42. **M'burg Deep Grape square shaped compote - green - satin & nice, this is a great pair**
- ___ 43. **M'burg Deep Grape square shaped compote - amethyst - satin & nice**
- ___ 44. Dragon & Lotus ruffled bowl - peach opal - scarce, nice
- ___ 45. Dragon & Lotus ruffled bowl - green - super pretty
- ___ 46. **Tree Trunk elephant's foot 12 1/2" vase w/ ruffled top - purple - highly desirable vase, very rare**
- ___ 47. M'burg Holly Sprig tri-cornered 7" bowl - marigold - radium, pretty
- ___ 48. **Imperial Grape water carafe - emerald green - super, super pretty, just shines green!**
- ___ 49. Imperial Grape water carafe - purple
- ___ 50. **Grape & Cable 8 pc. master punch set - white - frosty & fantastic, a beautiful set!**
- ___ 51. **Grape & Cable midsize 8 pc. punch set - green - super pretty, has one small nick under flute**
- ___ 52. **Grape & Cable midsize 6 pc. punch set - purple - outside of bowl is beautiful!**
- ___ 53. **Grape & Cable midsize 8 pc. punch set - marigold - dark & beautiful**
- ___ 54. **Stippled Grape & Cable small size 8 pc. punch set- blue - very, very, very rare set, so hard to find stippled plus in the rare color of blue**
- ___ 55. M'burg Grape Wreath 7" IC shaped bowl - marigold - radium, nice
- ___ 56. **Orange Tree loving cup - blue - the best one! sold at the Tilberg auction years ago, fabulous irid.**
- ___ 57. **Orange Tree loving cup - green - another one from the Tilberg auction, fabulous again!**
- ___ 58. **Sunflower spt ftd ruffled bowl - ice blue - very pretty irid., rare**
- ___ 59. **Sunflower spt ftd ruffled bowl - blue - electric & super**
- ___ 60. Sunflower spt ftd ruffled bowl - green - pretty, some stretch effect
- ___ 61. Sunflower spt ftd ruffled compote - purple
- ___ 62. Sunflower spt ftd ruffled bowl - marigold
- ___ 63. Zipped Heart giant rose bowl - green - very scarce piece of Cambridge, few minor chips on teeth of base
- ___ 64. **Stag & Holly lg size ftd IC shaped bowl - blue - a super pretty example with even irid.**
- ___ 65. **Hearts & Flowers ruffled compote - marigold on custard - very rare color & super pretty**
- ___ 66. **Hearts & Flowers ruffled compote - green - another super pretty one**
- ___ 67. Hearts & Flowers ruffled compote- blue- electric & super

- ___ 68. Plaid ruffled bowl - marigold
- ___ 69. **Stippled Three Fruits 9" plate w/ribbed back - aqua opal - nice opal w/pretty pastel irid.**
- ___ 70. Stippled Three Fruits 9" plate w/ribbed back - sapphire - very rare & nice plate, epoxy on base
- ___ 71. Stippled Three Fruits 9" plate w/ribbed back - marigold - dark, nice
- ___ 72. **Ripple 10 1/2" vase - blue - 2 7/8" base, very rare color for this vase, nice!**
- ___ 73. Ripple 10 1/2" vase - purple - 2 7/8" base, nice
- ___ 74. M'burg Many Stars ruffled bowl - amethyst - 6 pt star, radium, chip on point
- ___ 75. **Holly IC shaped bowl - celeste blue - super pretty example, has stretchy irid., a wonderful piece!**
- ___ 76. Holly IC shaped bowl - blue - electric & pretty
- ___ 77. **Pony ruffled bowl - ice green - scarce color, nice**
- ___ 78. **Good Luck ruffled bowl w/ribbed back - sapphire - rare color, nice**
- ___ 79. Good Luck ruffled bowl w/BW back - green - pretty
- ___ 80. Good Luck ruffled bowl w/ribbed back - blue - fantastic
- ___ 81. **Cosmos & Cane tankard water pitcher w/1 tumbler - white - very rare pitcher, not often sold**
- ___ 82. Captive Rose CRE bowl - blue - as pretty as they get, nick on top edge of base
- ___ 83. **Leaf Chain 9" plate - blue - very pretty example**
- ___ 84. Leaf Chain 9" plate - marigold - another beauty
- ___ 85. Puzzle round bonbon - purple - fantastic
- ___ 86. Nippon PCE bowl w/ribbed back - ice blue - nice
- ___ 87. Nippon PCE bowl w/ribbed back - white
- ___ 88. Nautilus 7" whimsey vase - purple - very pretty
- ___ 89. **Broken Arches 8 pc. punch set - purple - very pretty, quite scarce**
- ___ 90. Horse Medallion JIP ftd bowl - lime green - a very nice one!
- ___ 91. **Fruits & Flowers bonbon - ice green - dark color, pretty**
- ___ 92. **Fruits & Flowers bonbon - ice blue - also pretty**
- ___ 93. Fruits & Flowers bonbon - aqua opal - pastel, pretty
- ___ 94. Fruits & Flowers bonbon - purple
- ___ 95. Diamond Point 10 1/2" vase - ice blue - scarce, nice
- ___ 96. Diamond Point 10 1/2" vase - blue - super pretty, tiny pinpoint on bottom of base
- ___ 97. Diamond Point 9 1/2" vase - green
- ___ 98. **Four Seventy Four small size water pitcher - purple - absolutely beautiful, rare**
- ___ 99. Four Seventy Four tumbler - blue - beautiful, rare color ?
- ___ 100. **Grape & Cable master IC bowl - ice blue - super pretty irid. on this rare color**
- ___ 101. **Grape & Cable master IC bowl - ice green - another beauty, rare color**
- ___ 102. Grape & Cable master IC bowl - purple - couple irid. spots on face
- ___ 103. **Rustic 20" funeral vase w/plunger base - amethyst - very scarce & super pretty, love the shape**
- ___ 104. Persian Medallion lg size CRE bowl - green - scarce shape, nice
- ___ 105. Dandelion mug - aqua opal - very pretty example
- ___ 106. **Hearts & Flowers 9" plate w/ribbed back - purple - scarce, nice**
- ___ 107. **Hearts & Flowers 9" plate w/ribbed back - marigold - another nice plate**
- ___ 108. **Grapevine Lattice tankard water pitcher - amethyst - fantastic, can't imagine a better one, out of the Woody Funk auction**
- ___ 109. M'burg Zig Zag crimped edge ruffled bowl - marigold - radium, nice
- ___ 110. **Peacocks PCE bowl w/ribbed back - ice green - scarce, nice**
- ___ 111. M'burg Holly Sprig crimped edge 7" deep round bowl - amethyst - radium, pretty
- ___ 112. Dragon & Strawberry IC shaped bowl - marigold - super pretty example, does have a tiny chip on point
- ___ 113. **Grapevine Lattice 7" plate - purple - spectacular!**
- ___ 114. **Lotus & Grape IC shaped bowl - Persian Blue - rare color, nice example**
- ___ 115. **Palm Beach 5 pc. water set - white - pitcher is nice, one tumbler has silver decoration on top edge**
- ___ 116. **Peter Rabbit 9" plate - green - chip and epoxy on back of edge, rare**
- ___ 117. Vintage 9" 3 in 1 edge bowl - blue
- ___ 118. M'burg Blackberry Wreath 8" ruffled bowl - green - radium
- ___ 119. **Scroll & Flower Panels vase - smoke - extremely rare vase, has great irid.**
- ___ 120. Fleur de Lis flared jardinière - marigold - Inwald, scarce
- ___ 121. **Imperial Grape 10 pc. punch set - purple - very pretty set, minor nick on rib on side of base,**
- ___ 122. **M'burg Hobnail Swirl spittoon - marigold - a beauty**
- ___ 123. Grape & Cable ftd turned in centerpiece bowl - purple - this one is turned in a lot, almost could call rose bowl, pretty
- ___ 124. **Stippled Three Fruits ruffled bowl w/ribbed back - aqua opal - scarce**
- ___ 125. Stippled Three Fruits ruffled bowl w/ribbed back - marigold - pretty
- ___ 126. **N's Thin Rib 14 1/2" midsize vase - sapphire - beautiful irid., rare vase**
- ___ 127. **N's Thin Rib 13" midsize vase - vaseline - pretty irid., as nice as they get!**
- ___ 128. Peacock at the Fountain butter dish, creamer & spooner - purple - all pieces are super pretty, butter dish base has open spot on edge where it looks as if sand grit came out
- ___ 129. Little Fishes 10" ftd ruffled bowl - marigold
- ___ 130. **Jeweled Peacock Tail 8" vase - purple - Piccardo, rare & has very pretty irid.**
- ___ 131. Wishbone 10" PCE bowl w/BW back - green
- ___ 132. Fanciful 9" plate - blue - very nice
- ___ 133. Fanciful 9" plate - purple
- ___ 134. **Harvest Flower 6 pc. tankard water set - marigold - pitcher is fantastic, extremely hard to find**
- ___ 135. Four Flowers round sauce - purple - very pretty
- ___ 136. Three Row Open Edge IC shaped bowl - ice green - scarce, nice

- ___ 137. **Diamond Rib 21" funeral vase - green - great example, has big mouth, wonderful!**
- ___ 138. **Diamond Rib 19" funeral vase - marigold - good even color from top to bottom, a dandy!**
- ___ 139. **Open Rose 9" plate - purple - very pretty, scarce**
- ___ 140. Open Rose 9" plate - marigold - pretty
- ___ 141. Grape Delight rose bowl - white
- ___ 142. **Peacock at the Fountain ruffled fruit bowl - green - very rare color, nice**
- ___ 143. Stretch Glass 9 1/2" cupped in bowl - red
- ___ 144. **Singing Birds 3 pc. water set - purple - pitcher is very pretty for these**
- ___ 145. **Singing Birds water pitcher w/1 tumbler - marigold - nice**
- ___ 146. Grape & Cable 11" ruffled bowl - blue - super pretty electric irid., very tiny pinpoint filled with epoxy on point
- ___ 147. **Corn vase w/plain base - marigold - scarce & highly desirable ?**
- ___ 148. Corn vase w/stalk base - purple - scarce, nice
- ___ 149. Corn vase w/plain base - white - pretty irid.
- ___ 150. **Rose Show ruffled bowl - green - very pretty irid., tiny nick on rose**
- ___ 151. **Rose Show ruffled bowl - ice green - very pretty for these**
- ___ 152. Rose Show ruffled bowl - marigold - dark, nice
- ___ 153. Drapery 8" vase - purple - fantastic, tiny pinpoint filled with epoxy
- ___ 154. **Dragon's Tongue ftd ruffled bowl - marigold - very pretty, extremely rare**
- ___ 155. **Memphis punch bowl & base - ice green - very rare item, has 4" crack from top edge through one ruffle**
- ___ 156. M'burg Tulip Scroll 9 1/2" vase - amethyst - super pretty & scarce, couple of tiny pinpoints in pattern
- ___ 157. **Wishbone ftd tri-cornered dish - marigold - dark & pretty**
- ___ 158. **Lovely ftd round bowl - purple - very scarce & desired pattern**
- ___ 159. Cosmos & Cane 10" ruffled bowl - white
- ___ 160. Holly CRE bowl - green
- ___ 161. **Peacock & Grape 9" plate - marigold - spectacular with pink & yellow highlights, one of the best**
- ___ 162. Six Petals 8" crimped edge ruffled bowl - purple - super!
- ___ 163. **Venetian giant rose bowl - marigold - very rare piece, one tooth has small chip that has been polished, who cares**
- ___ 164. **Venetian Giant rose bowl - green - another rare one**
- ___ 165. Imperial Grape 7 pc. water set - purple - very pretty set
- ___ 166. Imperial Grape 7 pc. water set - marigold
- ___ 166a. **Nippon 9" plate w/BW back - green - very pretty, scarce**
- ___ 167. **Nippon 9" plate w/BW back - marigold - very pretty, scarce**
- ___ 168. **Orange Tree w/trunk IC shaped bowl - blue - fantastic, who ever heard of blue oranges?**
- ___ 169. Poppy pickle dish - green - nice
- ___ 170. Poppy pickle dish - blue - super
- ___ 171. Poppy pickle dish - marigold - pretty
- ___ 171a. Lattice & Points 9 1/4" vase - purple - very minor roughness around base
- ___ 172. **Stippled Grape & Cable Variant 9" plate w/ribbed back - aqua - very pretty plate, scarce color**
- ___ 173. Texas giant tumbler - blue - rare color, neat
- ___ 174. **Rustic 18 1/2" funeral vase - green - very, very pretty vase**
- ___ 175. Basketweave Open Edge lg size basket - celeste blue - very pretty & scarce
- ___ 176. **Lotus & Grape 9" plate - green - scarce color, nice**
- ___ 177. **Lotus & Grape 9" plate - amethyst - scarce**
- ___ 178. Blackberry & Rays ruffled compote - purple - nice
- ___ 179. N's Bushel Basket - blue ?
- ___ 180. **Raspberry water pitcher w/1 tumbler - ice blue - rare color, nice, great opportunity**
- ___ 181. Shell deep ruffled bowl - smoke - nice
- ___ 182. **Peacock at the Fountain ruffled compote - purple - scarce, nice**
- ___ 183. **Loganberry vase - marigold - dark from top to bottom, a beauty**
- ___ 184. Chrysanthemum lg size ftd ruffled bowl - blue - very pretty
- ___ 185. **Peacocks 9" plate w/ribbed back - ice blue - scarce color & highly desirable**
- ___ 186. Orange Tree ftd ruffled fruit bowl - blue - couple of tiny hits on inside of bowl
- ___ 187. Orange Tree ftd ruffled fruit bowl - marigold - pretty
- ___ 188. **Stippled Good Luck ruffled bowl w/ribbed back - marigold - covered with pink irid., absolutely fantastic!**
- ___ 189. Beaded Bullseye 12" vase - purple - nice
- ___ 190. **M'burg Trout & Fly square shaped bowl - marigold - satin, rare, nice**
- ___ 191. Cherry Chain 10" ruffled bowl - blue - nice
- ___ 192. **Grape & Cable ftd banana boat - green - super pretty example**
- ___ 193. **Grape & Cable ftd banana boat - purple - to say this is beautiful is an understatement, also flared out more than most**
- ___ 194. **Hearts & Flowers PCE bowl w/ribbed back - lime green - super pretty irid. on this rare color**
- ___ 195. Hearts & Flowers PCE bowl w/ribbed back - marigold - very pretty for these
- ___ 196. Grape & Cable hatpin holder - purple - nice example
- ___ 197. Concord ruffled bowl - green - super pretty
- ___ 198. **Dozen Roses ftd round bowl - amethyst - very rare pattern, nice**
- ___ 199. **M'burg Whirling Leaves tri-cornered crimped edge bowl - marigold - radium & nice**
- ___ 200. **Leaf Chain 7" plate - celeste blue - lacks irid. on face, but very rare, large chip on back edge**
- ___ 201. **Six Sided candlestick - purple - fantastic**
- ___ 202. Captive Rose ruffled bowl - amethyst
- ___ 203. **Tree Trunk 7" squatty vase - ice blue - super pretty**
- ___ 204. Tree Trunk 7 1/2" squatty vase - white - tough to find

- ___ 205. Tree Trunk 6" squatty vase - purple
- ___ 206. Tree Trunk 7 1/2" squatty vase - green
- ___ 207. Tree Trunk 6" squatty vase - marigold - radium type irid., beautiful!
- ___ **208. Octagon small size water pitcher - purple - another beauty, wow!**
- ___ 209. Three Fruits 9" plate w/BW back - marigold
- ___ **210. Morning Glory 12 1/2" funeral vase - purple - super pretty example, has a 10" open mouth**
- ___ 211. Poinsettia & Lattice ftd ruffled bowl - marigold - nice
- ___ 212. Imperial Grape 8" plate - purple - super pretty
- ___ **213. M'burg Hobstar & Feather 14 pc. punch set w/ Fleur de Lis interior - marigold - rare set & nice**
- ___ 214. Round Up 9" plate - blue - nice
- ___ **215. Gothic Arches 10 1/2" vase - smoke - has 8 1/2" mouth, very scarce**
- ___ 216. Concave Diamond water pitcher w/lid - celeste blue
- ___ 217. N's Footed Fine Rib JIP 6 3/4" vase - purple - very nice
- ___ 218. N's Footed Fine Rib JIP 6 3/4" vase - marigold - nice
- ___ **219. Poppy Show ruffled bowl - ice green - collector's favorite, nice**
- ___ 220. Freefold 11 1/2" vase - purple - super
- ___ 221. Fluffy Peacock water pitcher w/1 tumbler - marigold - dark, pretty
- ___ 222. Stippled Three Fruits Medallion spt ftd ruffled bowl - aqua opal - nice opal, pretty
- ___ 223. Stippled Three Fruits Medallion spt ftd ruffled bowl - ice blue - very pretty for these
- ___ 224. Three Fruits Medallion spt ftd ruffled bowl - purple - pretty
- ___ **225. Fenton's Peacock at Urn ruffled bowl - green - outstanding, very pretty!**
- ___ 226. Ribbed Optic 6 pc. water set w/lid - vaseline - neat set
- ___ 227. Stretch Glass #315 Twist candlesticks, 9 1/2" - vaseline
- ___ 228. Stretch Glass 12 1/2" Openwork plate, #8076 - vaseline
- ___ 229. Stretch Glass N's #807 cupped square compote w/ Tree Bark base - celeste blue
- ___ **230. 1914 Parkersburg Elks 7" plate - blue - super pretty example, this is a dandy!**
- ___ **231. Octagon wine - blue - very rare color**
- ___ 232. M'burg Poppy round compote - marigold - rare color for this compote & nice
- ___ 233. Stork & Rushes water pitcher - blue - chip on shoulder by bottom beads
- ___ 234. M'burg Hanging Cherries master IC bowl - aqua - scarce color, satin & nice
- ___ **235. Acorn Burrs punch bowl, base & 1 cup - marigold - nice set**
- ___ 236. M'burg Zig Zag crimped edge square shaped bowl - amethyst - 2 polished chips on base
- ___ 237. Target 5 1/2" squatty vase - white - frosty, nice
- ___ **238. Stippled Grape & Cable PCE bowl w/ribbed back - lime green - rare color, hard to find piece, nice**
- ___ 239. Stippled Grape & Cable Variant PCE bowl w/ribbed back - blue - scarce
- ___ 240. Tornado small size vase - marigold - tiny nick on base
- ___ 241. M'burg Wild Rose 9" kerosene lamp - amethyst - 6 1/4" base, 1" crack in top of font
- ___ 242. Corinth 10" JIP vase - amber
- ___ 243. Corinth 9 1/2" JIP vase - teal green
- ___ **244. Hattie chop plate - purple - fantastic, a beautiful piece glass**
- ___ 245. Orange Tree hatpin holder - marigold - pastel colored irid., a beauty
- ___ **246. Grape & Cable Variant ruffled bowl w/ribbed back - aqua - scarce color**
- ___ 247. Rustic midsize 16 1/2" vase - green
- ___ **248. Shell 9" plate - smoke - scarce, nice**
- ___ 249. Thistle banana boat - blue - nice
- ___ **250. Tree Trunk 10 1/2" midsize vase - white - frosty, nice**
- ___ 251. Tree Trunk 12 1/2" midsize vase - blue - very pretty, peeling on ruffles
- ___ 252. Tree Trunk 12 1/2" midsize vase - green - pretty
- ___ 253. Tree Trunk 13 1/2" midsize vase - purple - super pretty
- ___ 254. Tree Trunk 13 1/2" midsize vase - marigold - another dandy
- ___ **255. Nippon ruffled bowl w/BW back - ice green - super pretty bowl in this rare color**
- ___ 256. Pulled Loop 10" vase - amethyst - pretty
- ___ **257. Creole giant rose bowl - marigold - very scarce item**
- ___ 258. Octagon wine decanter - purple - stopper has cork on the bottom
- ___ **259. Peter Rabbit ruffled bowl - marigold - dark, nice, great example**
- ___ 260. Grape & Cable Variant PCE bowl w/plain back - purple - nice
- ___ **261. M'burg Tracery bonbon - green - satin, super pretty, a super nice example of this rare piece**
- ___ 262. Palm Beach spooner - white
- ___ 263. Ftd Orange Tree table set - blue - all 4 pieces have typical damage to feet that have been repaired with epoxy
- ___ **264. Vintage 9" ruffled bowl - red - cherry red color & pretty, rare**
- ___ 265. Greek Key ruffled bowl w/BW back - purple - nice
- ___ **266. Dandelion tankard water pitcher - marigold - lots of yellow irid. and even from top to bottom, super!!**
- ___ 267. Good Luck 9" plate w/BW back - purple - nice
- ___ **268. M'burg Seacoast pin tray - green - tiny chip on edge**
- ___ **269. M'burg Seacoast pin tray - amethyst - very nice**
- ___ 270. N's Thin Rib 11" vase - ice green - scarce
- ___ 271. N's Thin Rib 10" vase - blue - nice
- ___ **272. Raspberry milk pitcher - white - scarce & nice!**
- ___ 273. Raspberry milk pitcher - green - nice
- ___ 274. Raspberry milk pitcher - marigold - nice
- ___ **275. Many Fruits punch bowl & base - purple - pretty set**
- ___ 276. Hearts & Flowers ruffled bowl w/ribbed back - ice green - scarce
- ___ 277. Hearts & Flowers ruffled bowl w/ribbed back - white

- ___ 278. **Mikado ruffled compote - green - very rare color & nice, couple of manufacture open bubbles on edge of base**
- ___ 279. N's Fine Rib 10" vase - purple - nice
- ___ 280. **Orange Tree ruffled bowl - red - very nice bowl & super scarce**
- ___ 281. M'burg Hobnail rose bowl - amethyst
- ___ 282. M'burg Grape Wreath Variant 3 in 1 edge sauce - marigold - radium, pretty
- ___ 283. **Stippled Three Fruits PCE bowl w/ribbed back - green - very pretty example, rare color**
- ___ 284. Grape & Cable ruffled fruit bowl - blue - pretty irid., rare color
- ___ 285. **Little Flowers 10" ruffled bowl - amberina - scarce color**
- ___ 286. **M'burg Courthouse IC shaped bowl - amethyst - radium, nice**
- ___ 287. **Stippled Good Luck 9" plate w/ribbed back - marigold - yellow irid. on this beautiful plate**
- ___ 288. Wreath of Roses bonbon - amethyst
- ___ 289. **Tree Trunk 10 1/2" vase - sapphire - scarce color**
- ___ 290. Tree Trunk 10" vase - lime green - another scarce color, nice
- ___ 291. Imperial Grape wine bottle - purple - pretty
- ___ 292. M'burg Seaweed 10" 3 in 1 edge bowl - marigold - satin, nice
- ___ 293. **Colonial Lady vase - purple - rare vase & highly desirable**
- ___ 294. **Waterlily ftd ruffled sauce - lime green opal - scarce sauce, nice**
- ___ 295. Double Star water pitcher - green - very pretty example
- ___ 296. Vintage 7" plate - green - pretty
- ___ 297. **Plume Panels 9 3/4" vase - red - very nice for these & quite scarce**
- ___ 298. Grape & Cable 7 pc. tankard water set - purple - pitcher has crack around bottom of handle
- ___ 299. **Peacocks ruffled bowl w/ribbed back - marigold - pink & yellows!!**
- ___ 300. **Tree Trunk 18" funeral vase - purple - very scarce & nice, tiny nick on top of one flute**
- ___ 301. Flute creamer - amber - rare color, 1" heat check by bottom of handle, probably in the making
- ___ 302. **1910 Detroit Elks 7" ruffled bowl - green - nice example, has numbers from the Fenton Museum**
- ___ 303. Miniature Morning Glory 5" vase - purple - super pretty
- ___ 304. M'burg Nesting Swan ruffled bowl - green - radium
- ___ 305. Wishbone epergne lily - purple - a really nice one
- ___ 306. **Ten Mums 3 pc. tankard water set - marigold - nice color on a rare set**
- ___ 307. Wild Strawberry 10" ruffled bowl w/plain back - purple - nice
- ___ 308. Basketweave Open Edge lg size square shaped basket - celeste blue - scarce color, scarce shape
- ___ 309. Round Up 9" plate or low IC bowl - purple - pretty
- ___ 310. Sailboats round sauce - amberina - iridized on backside only
- ___ 311. Four Pillars 10 1/2" vase - blue - scarce color, pretty
- ___ 312. **M'burg Sunflower pin tray - green - rare & highly desirable**
- ___ 313. Floral & Grape water pitcher - blue - nice
- ___ 314. M'burg Rays & Ribbons ruffled bowl - green - radium
- ___ 315. **N's Peacock at Urn master IC bowl - marigold - lots & lots of yellow**
- ___ 316. **Tornado lg size vase - green - very nice**
- ___ 317. **Peacock at the Fountain 8 pc. punch set - purple - highly desirable set, one cup has chips**
- ___ 318. Rose Show ruffled bowl - marigold - nice
- ___ 319. Honeycomb & Beads 7" crimped edge plate - purple - super pretty
- ___ 320. Stippled Grape & Cable 9" plate w/ribbed back - green - super pretty for these
- ___ 321. **Thumbprint & Ovals vase - purple - very pretty & highly desirable**
- ___ 322. Strawberry 9" plate w/BW back - purple
- ___ 323. **Ribbed Tornado vase - marigold - beautiful irid., an outstanding piece, rare w/the ribs**
- ___ 324. Double Dutch ftd round bowl - purple - super pretty, minor pinpoint on foot
- ___ 325. **Fisherman's mug - peach opal - great opal for these & pretty, wow!**
- ___ 326. Feathers 6" squatty vase - green
- ___ 327. Three Fruits 9" plate w/BW back - purple - super nice
- ___ 328. **Strawberry Scroll 3 pc. water set - marigold - very pretty set, my favorite shape**
- ___ 329. **Border Plants dome ftd handgrip plate - purple - super, super!!**
- ___ 330. Rose Show 9" plate or IC shaped bowl - white
- ___ 331. Petal & Fan deep round sauce - lavender - pretty irid., neat
- ___ 332. **M'burg Deep Grape flared compote - marigold - satin & rare, highly desirable**
- ___ 333. **Illinois Soldiers & Sailors 7" plate - blue - super pretty, quite rare**
- ___ 334. **Illinois Soldiers & Sailors 7" plate - marigold - dark, very nice**
- ___ 335. Lot of 2 pieces - amethyst
- ___ 336. Grape & Cable ruffled hatshape - purple AND Blackberry miniature compote - blue - tiny chips on base
- ___ 337. Lot of 3 pieces - marigold - JIP has inside bruise
- ___ 338. Lot of 3 swan salts - white one not iridized
- ___ 339. Frank Fenton 85th Birthday Holly 9" plate - red - signed Don Fenton 2001
- ___ 340. Frank Fenton 85th Birthday Holly ruffled bowl - red
- ___ 341. 1993 HOACGA Good Luck 6" plate - red
- ___ 342. Lot of 10 pieces
- ___ 343. Enameled 9 pc. water set - green - not Carnival Glass

SEECK AUCTIONS
 P.O. BOX 377
 MASON CITY, IA 50401

PRESORTED
 FIRST CLASS MAIL
 U.S. POSTAGE
 PAID
 MAIL EXPEDITORS



**2018 CARNIVAL
 GLASS AUCTION**
 JULY 21 9:30 A.M.
 INDIANAPOLIS, IND.

T3 P1 69
 LEE MARKLEY
 BOX 306
 MENTONE, IN 46539-0306

