

# Keystone Carnival Glass Convention 2018

May 10-12th 2018 ( The auction will be May 12th at 9:30am)

Holiday Inn - Grantville, PA.  
604 Station Road Grantville, PA 17028  
For reservations please call 717.469.0661  
Directions off of I- 81: Hershey Exit # 80 off of I-81 North or South .  
Approx 20 miles north of Harrisburg PA on I-81 N

The folks and officers at the Keystone Club ALWAYS provide an enjoyable convention. We hope to see you there! Bring your kids or grandkids, Hershey park just down the road!

\*\*\*\*\*Mail, E-Mail, Phone and Absentee Bids Policy:\*\*\*\*\*

**Absentee Bidding:** Absentee bidding is available via our "Auction Flex" bidding system. You may also email us, or mail your absentee bids. Just click on the auction flex logo on our website.

**Live Phone Bidding:** You can do "live phone" bids on items of **\$400.00 or more in value**. Otherwise, please leave a bid with us or on Auction Flex. Just give us a call at 937.548.7835 to set up your item schedule.

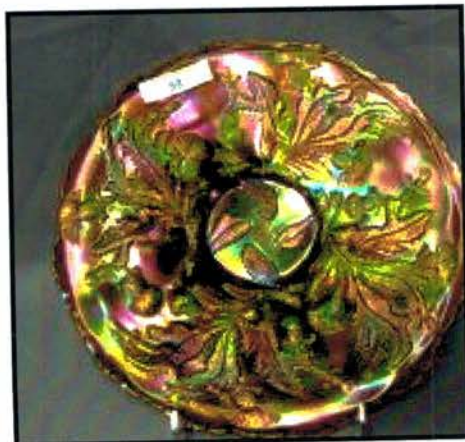
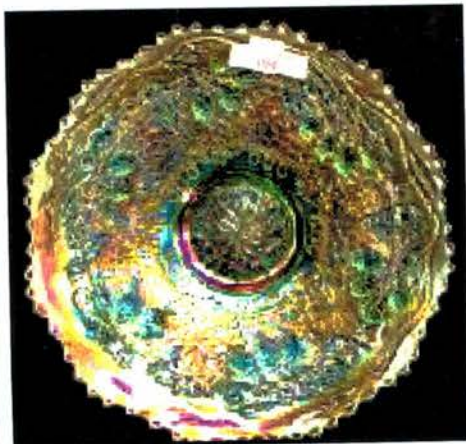
**Live Internet Bidding:** This auction will be presented LIVE with ProxiBid. There will be live audio and video. Please read all terms of Proxibid before signing up or bidding. If you wish to pay by check, please let us know before the start of the auction at jimwroda@mac.com

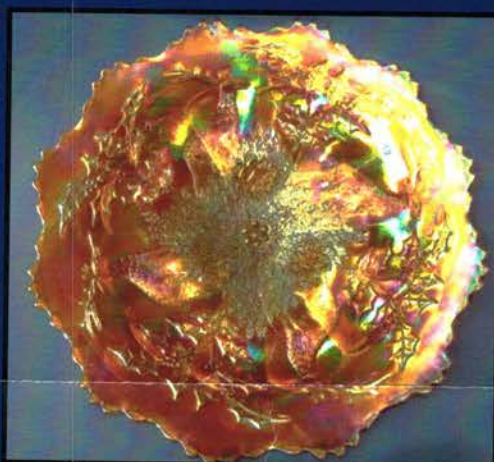
**Shipping:** There is a \$7.00, per successful bid, convenience fee. Items will be shipped within 5 days after payment is received. We reserve the right to cancel ANY bid for ANY reason. We will cancel all bids on an item if damage is found during the auction. If you do not hear from us by Tuesday following week, you did not win.

**Terms & Conditions:** Cash, Travelers checks, business or personal checks w/I.D. Visa/ MC & Discover with a 3% clerking fee. Canadian buyers: Your check MUST say "pay in US Funds". you CANNOT write it on the check. We reserve the right to withdraw any damaged item from the auction before the bidding starts.

**Jim Wroda Auctioneer AU- 005729**  
937.548.7835 OH Office Jim's cell: 937.459.9556  
Email us: jimwroda@mac.com

*Visit our website site for full weekend coverage at:  
[www.jimwrodaauction.com](http://www.jimwrodaauction.com) Click on the Auction Flex Logo*





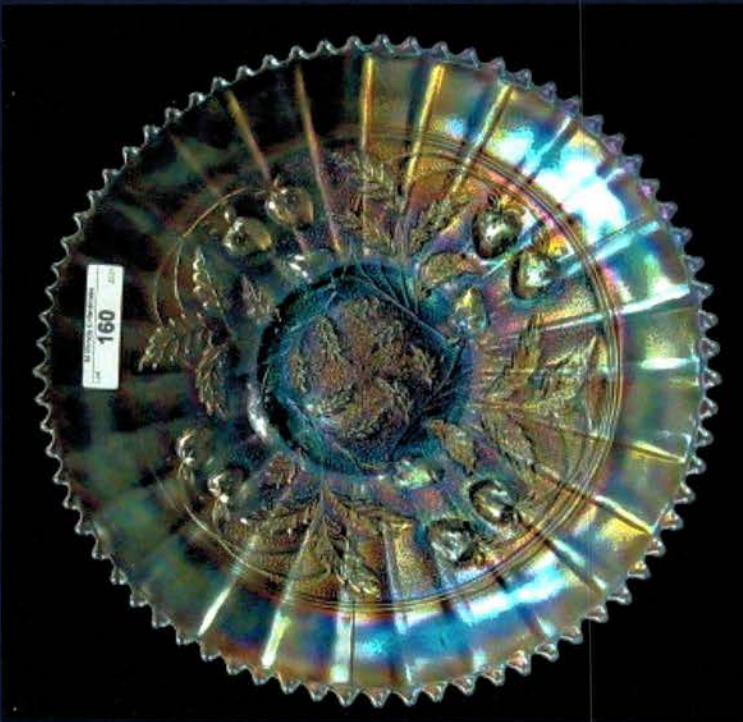
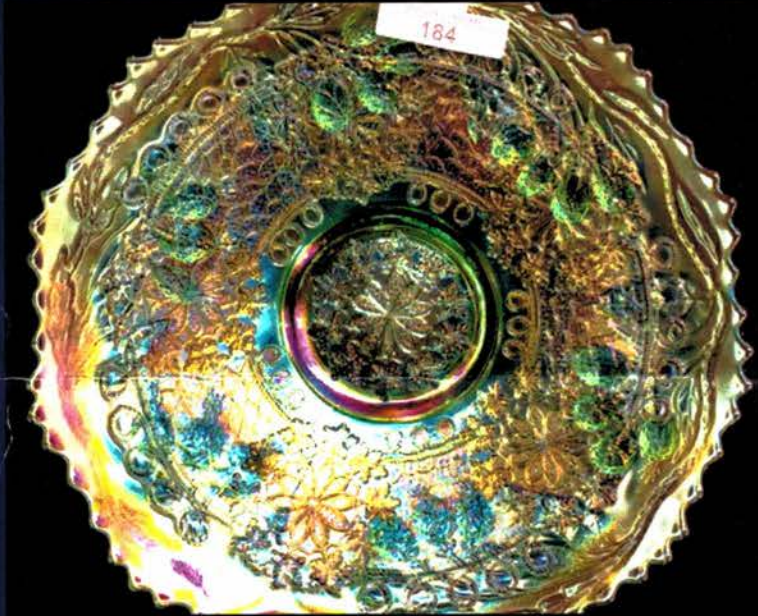
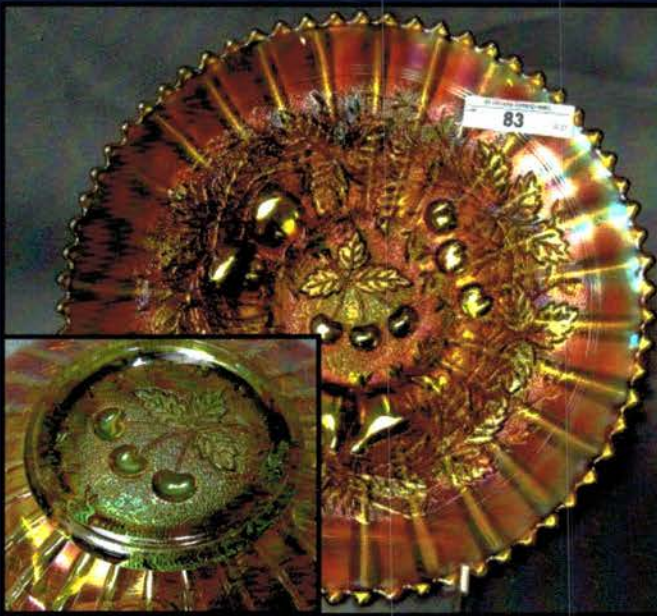
- 1 Imperial elec purple Octagon creamer. WOW!
- 2 Imperial elec purple Octagon Butterdish. Super Well match top and base. RARE
- 3 Imperial elec purple Lustre Rose creamer. Wonderful bright yellow hi-lights
- 4 Imperial elec purple Lustre Rose covered sugar, Another beautiful piece of glass
- 5 Imperial stunning elec purple Loganberry vase. Just Beautiful!!!
- 6 Imperial purple Fashion water pitcher. has nice electric hi-lights through-out
- 7 Nwood 9" elec blue Stippled 3 Fruits plate. OMG! Might be one of the best we have ever sold! Soft satin elec irid!
- 8 Nwood 9" pumpkin marigold Stippled 3 Fruits plate. Nice bright pink & blue irid.. YUMMY!
- 9 Nwood elec blue Peacock at Fountain water pitcher. WOW!
- 10 Nwood elec purple Dandelion tankard. This glass is just BEAUTIFUL!
- 11 Nwood elec purple Dandelion tumbler
- 12 Nwood ELEC BLUE Oriental Poppy Tankard. VERY RARE AND WONDERFUL COLOR! Don't miss this!!
- 13 Nwood blue Oriental Poppy tumbler. RARE
- 14 Nwood ice green Grape & Cable mid-size 8pc punch set. Tremendous pastel colors. base is more lime as usual ( if you even get to see one!) Wonderful set!
- 15 Dugan purple Farmyard 6 ruffled bowl. Always a favorite, has VERY NICE color!
- 16 Fenton cherry red 5" Panther ft'd sauce. RARE! It's nice when red looks like red!!
- 17 Fenton pumpkin marigold Bouquet water pitcher. BY FARRRRRR the darkest one I have seen
- 18 Fenton blue Floral and Grape pitcher
- 19 Fenton 13" marigold Stag & Holly Chop plate
- 20 Fenton 10" marigold Stag & Holly ft'd ICS bowl
- 21 2 Fenton 7" blue Paneled Diamond & Bows vases
- 22 Fenton 12" marigold April Showers vase
- 23 Fenton marigold Interior Drape enameled pitcher RARE Decoration
- 24 Fenton 6" mari Persian Medallion plate
- 25 Fenton 5" CHERRY RED Holly ruffled hat
- 25a Nwood mari Greek Key 5pc water set- Scarce
- 25b Nwood purple Greek Key 5 pc water set- Very hard to find set
- 25c Nwood GREEN Greek KEy 5pc water set- RARE
- 26 Fenton blue Butterfly & Berry spooner. WOW!
- 27 SPECTACULAR Fenton emerald green Ten Mums 6 ruffled bowl... will let the pictures do the talking.... BUY IT
- 28 10" elec purple 4 Flowers variant ruffled bowl NICE!
- 29 Imperial 11" SMOKE Gothic Arches mid size vase. RARE and Beautiful!
- 30 Imperial 8" smoke Smooth Panels flared vase.
- 31 Imperial 13" elec purple Beaded Bullseye vase
- 32 Imperial 12" elec purple Beaded Bullseye vase w/ flared top
- 33 Imperial 7.5" elec purple Morning Glory vase
- 34 Imperial 7" smokey lav. Morning Glory vase
- 35 Imperial 5" mari Morning Glory vase cool shape.
- 36 Millersburg 9" mari Zig Zag CRE square bowl w/ loads of pink irid. SUPER!
- 37 Millersburg 9" radium green Whirling Leaves tri-corner bowl- Scarce
- 38 Millersburg 9" rad mari Fluer-de-lys CRE ruffled bowl.
- 39 Millersburg 7" rad purple Holly Whirl tri-corner bowl
- 40 Millersburg mari Holly Sprig card tray- Benesch
- 41 Millersburg 7" rad mari Holly Whirl tri-corner bowl- SUPER!
- 42 Nwood 9" ice green Peacocks plate- NICE
- 43 Nwood mari 8" Peacocks stippled bowl ON FIRE!!
- 44 Nwood purple G&C butterdish
- 45 Nwood 9" purple G&C PCE bowl w/ PB
- 46 Nwood 8.5" pale IB Heart Flowers bowl- Silvery
- 47 Nwood 8.5" white Rose Show bowl
- 48 Nwood 8.5" purple Embroidered Mums bowl
- 49 Nwood 9" DARK MARI 3 Fruits plate w/ stretch irid. Incredible piece of mari!
- 50 Nwood 8.5" green 3 Fruits ruffled bowl w/ BW back
- 51 Nwood 9" IG Drapery vase- flake on one toe
- 52 Nwood 9.5" ELEC BLUE Tree Trunk vase. SMOKIN HOT!
- 53 Nwood 11" smokey lav Diamond Points vase. Real odd color. Cool!
- 54 Nwood 7" Sapphire Thin Rib squatty vase- RARE
- 55 Nwood elec purple Heart & Flower compote
- 56 Nwood elec purple Heart & Flower compote
- 57 Nwood bright mari Heart & Flower compote
- 58 Dugan 8" Windflower bowl, Vaseline w/ mari overlay
- 59 2 Dugan 5" PO Petal & Fan bowls
- 60 Dugan elec purple Stippled Rays nappy
- 61 Dugan purple May Ann 2 handled vase
- 62 Nwood elec blue 20" Tree Trunk Funeral vase. AWESOME COLOR!
- 63 Nwood purple 18.5" Tree Trunk Funeral vase. As nice as you will find out there
- 64 Nwood 9" BRight mari Peacocks Stippled plate NICE!
- 65 Nwood 9" elec blue Peacocks PCE bowl. WOW!
- 66 Nwood 9" mari 3 Fruits plate w BWB
- 67 Nwood 9" mari 3 Fruits stippled plate BEAUTY!
- 68 Nwood 10" purple Diamond Points vase
- 69 Nwood 10" purple Diamond Points vase- 6 pt
- 70 Nwood elec purple Peacock at Fountain fruit bowl STUNNER!
- 71 Nwood elec purple Peacock at Fountain 6pc punch set. ANOTHER STUNNER! WOW!
- 72 Nwood purple G&C centerpiece bowl w/ points in.



- 73 Nwood DARK MARI Daisy & Plume rosebowl  
Pretty one!
- 74 Nwood GREEN Wide Panel 4 lily epergne- Scarce
- 75 Nwood Marigold Wide Panel 4 lily epergne-  
Scarce
- 75a Nwood bright green Grape & Gothic Arches 7pc  
water set. Scarce
- 75b Nwood blue Grape & Gothic Arches 7pc water set.  
Good lookin set!
- 76 Nwood WHITE Wide Panel 4 lily epergne- RARE
- 77 Nwood LIME GREEN Wide Panel 4 lily epergne-  
RARE Great set of Epergnes!
- 78 Nwood blue G&C Stippled banded large fruit bowl  
SCARCE
- 79 Nwood blue Peach water pitcher- Nice color
- 80 Nwood 6" purple Leaf Columns squatty vase
- 81 Nwood blue Drapery rosebowl- Pretty
- 82 Nwood 10" frosty white Peacock at Urn MIC bowl
- 83 Nwood 9" APPLE GREEN Three Fruits Stippled  
plate. EXTREMELY RARE AND SUPER  
PRETTY.. JUST A PERFECT PLATE!! Don't miss  
this one!
- 84 Imp 4" SMOKE Parlor Panels squatty vase. small  
bruise on inside of vase as shown- who cares on  
this one.
- 85 Imp 7" mari on milk glass Smooth Panels vase
- 86 Imp 10" lav Ripple midsize vase- SUPER COLOR
- 87 Imp 15" mari Ripple funeral vase
- 88 Imp 9" elec purple Scroll Embossed plate
- 89 Imp 11" elec purple Beaded Bullseye vase.  
SUPER! More to lavender
- 90 Imp 11" elec purple Beaded Bullseye vase.  
SUPER!
- 91 Imp 13" elec purple Morning Glory funeral vase  
SMOKIN HOT!
- 92 Fenton 18" dark mari Rustic funeral vase. Nice
- 93 Fenton 10.5" BRICK RED Knotted Beads CRE  
vase
- 94 Fenton 11" green Knotted Beads vase
- 95 Fenton BLUE Butterfly & Berry hatpin holder,  
RARE
- 96 Fenton 15" green Rustic mid size vase
- 97 Fenton blue Wreath ROses punch bowl & base
- 98 Fenton 9" blue Persian MEDallion plate. Has a bit  
of a "wave" to it. Cool plate!
- 99 Fenton 9" ELEC RAD GREEN Thistle plate. JUST  
BUY IT!! Nothing else to say on this one....
- 100 Fenton BLUE 9" Thistle plate. Extremely RARE.  
Only one I have seen, I was told there MAY be  
another one out there, but not that I'm aware of.  
Great addition to your plate collection!
- 101 Nwood ice blue Grape & Cable banana boat-  
Scarce
- 102 Nwood Ice blue Fruits and Flower bon bon- frosty
- 103 Nwood Aqua Opal Fruits and Flower bon bon-  
Pastel
- 104 Nwood 11" aqua opal Tree Trunk vase- opal to  
base
- 105 Nwood 11" ice blue Tree Trunk vase- Frosty
- 106 Nwood 9.5" ice blue Thin Rib vase
- 107 Nwood 10.5" ice green Thin Rib vase
- 108 Nwood 10" ice green Leaf Columns vase
- 109 Stunning Nwood 8.5" AO 3 Fruits spatula ft'd bowl  
w/ smooth edge- A BEAUTY!
- 110 Nwood ice blue 8 Sided Bushel Basket-Scarce
- 111 Nwood 8 1/2" frosty white Rose Show bowl
- 112 Nwood 8 1/2" frosty white Peacocks bowl. Nice!
- 113 Nwood 9" IB Nippon bowl
- 114 Nwood AO Heart & Flower compote. Wonderful  
color!
- 115 Nwood 9" elec. purple G & C stippled plate. Rare  
and beautiful!
- 116 Nwood IG G & C low fruit bowl. Very dark color
- 117 Nwood 10" dark mari. Peacock at Urn Stippled  
ruffled bowl. Rare!
- 118 pair of Imp. 7" smoke Morning Glory vases.
- 119 Imp. 5 1/4" teal Smooth Panels vase
- 120 Imp. 7 1/2" teal Smooth Panels vase
- 121 Fenton aqua marine Double Dolphin fan vase
- 122 Fenton 7" Cherries Circle powder blue card tray
- 123 Fenton 8" celeste Three Row bowl in SP stand
- 124 Fenton red Vintage ferner. Rare.
- 125 Fenton 11" Rustic vase. This vase is very odd.  
Has a blue base with an amethyst top.
- 125a Fenton mari Blueberry water pitcher Scarce
- 125b Fenton WHITE Orange Tree Orchard water pitcher  
NICE!
- 125c Fenton mari Orange Tree Orchard water pitcher
- 126 Fenton 10" red Flute vase. Rare!
- 127 Fenton 7" red slag Acorn bowl
- 128 Fenton 5" red slag OE JIP hat
- 129 Imp. 5 1/2" flared Morning Glory vase w/5" top
- 130 West. 8 1/2" blue opal Rays ruffled bowl
- 131 Imp. 10" mari. 474 cupped vase. Rare!
- 132 US Glass 5 pc. tankard set w/Goofus spray. Cool  
Set
- 133 Mburg 10" radium green Peacock at Urn ruffled  
bowl.
- 134 Mburg 9" radium green Whirling Leaves tri-corner  
CRE edge bowl. Great color!
- 135 Dugan 10" purple Wishbone & Spades chop plate.  
Beautiful even color!
- 136 Dugan 6" purple Persian Garden 8-ruffle sauce.  
These are usually 6-ruffle
- 137 Nwood emerald green Corn vase. Beautiful even  
color all the way around.
- 138 Fenton 9" mari. Concord plate. Rare!
- 139 Fenton 9" PO Dragon & Lotus 3/1 edge bowl
- 140 Fenton 9" forest green Dragon & Lotus bowl with  
beautiful blue highlights
- 141 Fenton 9" powder blue Dragon & Lotus 3/1 edge  
bowl Very hard color to find.
- 142 Nwood 9" mari. Strawberry plate. Loaded with  
yellow iridescence.
- 143 Nwood 8 1/2" purple Stippled Strawberry ruffled  
bowl. Wonderful color.



- 144 Nwood AO Leaf & Beads flared nut bowl. Loaded with opal and color. Rare!
- 145 Nwood pearl (iridi. custard) Leaf & Beads Rose bowl with smooth rim. Rare!
- 146 Nwood purple Leaf & Beads tri-corner candy dish. Hardly ever found. Very nice!
- 147 Fenton 6" frosty white Blackberry OE bowl. Pretty hard to find in white!
- 148 Fenton blue Blackberry Block 7 pc. tankard set. Rare!
- 149 Imp. mari. Vintage Poppy Show vase. Very nice!
- 150 Imp. 16" mari. Ripple mid-size vase. Dark all the way down. Very Nice!
- 151 Imp. purple Luster Rose water pitcher w/nice blue highlights
- 152 Dugan 5" purple Ski Star sauce
- 153 Dugan 5" purple Cherries CRE round bowl. Scarce
- 154 Fenton 7" vaseline Acorn ruffled bowl. Pretty, hard to find bowl
- 155 Dugan elec. purple square Butterfly & Tulip footed bowl. Wonderful color!
- 156 Fenton 7 1/2" dark mari. Illinois Soldiers & Sailors plate. Good looking plate. Rare!
- 157 Imperial 9" blasting elec. purple Grape plate. Wonderful color. Has small base chip as shown. Who cares?
- 158 Very Rare Mburg green Hobnail spittoon. Very rare color and perfect. (most all of them are cracked. This one is not)
- 159 Fenton 9" deep red Peacock & Grape 8-ruffled bowl. As deep of red as you would want. Small base flake as shown.
- 160 Nwood 9" IB Strawberry stippled plate. Exceedingly rare w/pastel color.
- 161 Mburg green Wild Rose lamp. Rare! Always sought after.
- 162 Mburg 10" radium mari. Fleur-de-lys bowl
- 163 Mburg 9" green Trout & Fly ICS bowl
- 164 Mburg 10" purple Hanging Cherries ICS bowl
- 165 Mburg 10" green Strawberry Wreath CRE ruffled bowl
- 166 Mburg 8" green Mayan ICS bowl
- 167 Mburg 10 1/2" radium mari. Peacock at Urn flared master berry bowl. Rare shape. Pushed way down.
- 168 Mburg 10" radium purple Peacock at Urn ruffled bowl. Beautiful!
- 169 Mburg 9" radium purple Zig Zag CRE ruffled bowl.
- 170 Mburg 9" radium purple Zig Zag 3/1 edge bowl
- 171 Mburg 9" radium green Zig Zag 3/1 edge bowl
- 172 Mburg 9 1/2" radium dark green Whirling Leaves tri-corner CRE bowl
- 173 Mburg 10" radium pastel mari. Peacock at Urn ICS bowl. Beautiful!
- 174 Mburg 7" radium mari. Holly Whirl card tray
- 175 Mburg radium purple Holly Whirl spade shape nappy.
- 176 Mburg 10" radium mari. Peacock at Urn ruffled bowl
- 177 Mburg 10" radium green Nesting Swans ruffled bowl. Beautiful!
- 178 Mburg 8" green Blackberry Wreath 3/1 edge bowl
- 179 Mburg 10" purple Rays & Ribbons flared bowl
- 180 Mburg green Peacock at Urn giant compote. This might be the prettiest one I have ever seen.
- 181 Mburg radium green Holly Sprig spade shape nappy
- 182 Mburg 10" green Hobnail Swirl vase. Very nice!
- 183 Fenton 9" elec. blue Peter Rabbit plate. Outstanding! Not much else to say
- 184 Fenton 9" IG Leaf Chain plate with awesome pastel color. Rare with just a couple known.
- 185 Fenton 9" blue Captive Rose plate. Good color
- 186 Fenton 9" green Lotus & Grape plate. Rare!
- 187 Rare Fenton blue 6 3/4" OE Blackberry vase. As short as you'll find.
- 188 Rare Fenton mari. 6 3/4" OE Blackberry vase. As short as you'll find. Great pair of vases.
- 189 Fenton 7" celeste blue OE 2-side up hat.
- 190 Fenton 9" IG 3-row ruffled bowl. Very Rare.
- 191 Fenton 10" mari. Cherry Chain ruffled bowl
- 192 Fenton 7" aqua Persian Medallion bon bon. Rare!
- 193 Fenton blue Pond Lily bon bon
- 194 Fenton dark red 6" Blackberry Spray square hat
- 195 Fenton 6 3/4" red Blackberry Spray CRE JIP hat.
- 196 Fenton 9" forest green Peacock & Grape 8-ruffled bowl. Tough color.
- 197 Fenton 8 1/2" purple Thistle ruffled bowl
- 198 Rare Fenton vaseline Orange Tree mug
- 199 Fenton blue 7 pc. Orange Tree punch set. Scarce
- 200 Fenton 17 1/2" purple Rustic mid-size vase. Great Vase
- 200a Fenton PURPLE Butterfly & Fern 7pc water set. Scarce
- 200b Fenton BLUE Butterfly & Fern 7pc water set- NICE
- 200c Fenton MARI Butterfly & Fern 7pc water set- always sought after
- 201 Fenton 10" mari. Two Flowers fruit bowl
- 202 Fenton 10" mari. Stag & Holly footed ICS bowl
- 203 Dugan ice green Windflower gravy. RARE
- 204 Dugan 10" PO Wishbone & Spades ruffled bowl LOTS OF OPAL!
- 205 Dugan 9" purple Fanciful low ruffled bowl. Nice even colors!
- 206 Dugan 7" elec purple Holly Berry ruffled bowl
- 207 Dugan 6" elec purple Cherries CRE plate. SWEET
- 208 Dugan 9" frosty white Apple Blossom Twigs low ruffled bowl.
- 209 Dugan 9" mari Apple Blossom Twigs low ICS bowl most call this a plate
- 210 Dugan PO Fan gravy boat
- 211 Dugan 9" Ski Star PO Hand grip plate
- 212 Imperial 10" elec purple Beaded Bullseye vase BEAUTIFUL!
- 213 Imperial 10" teal Ripple vase
- 214 West 8.5" teal Corinth vase.

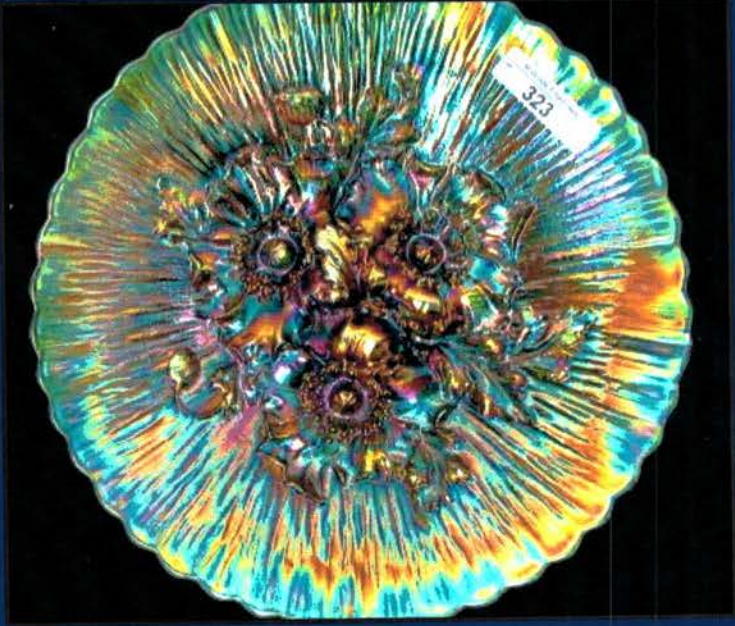
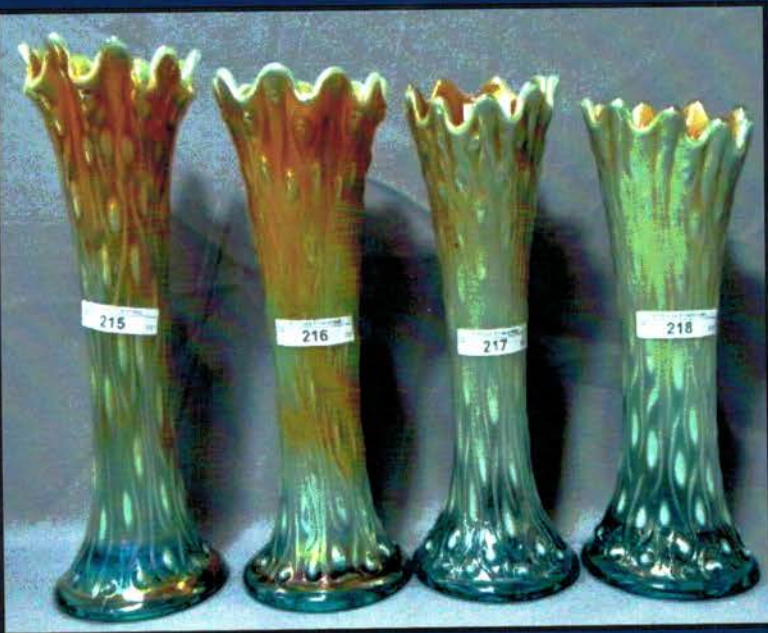




- 215 Nwood 11" Aqua Opal Tree Trunk vase. This starts a great run of AO vases! Everyone is NICE!
- 216 Nwood 10.75" Aqua Opal Tree Trunk vase.
- 217 Nwood 10.25" Aqua Opal Tree Trunk vase.
- 218 Nwood 10" Aqua Opal Tree Trunk vase.
- 219 Nwood 9" dark mari Tree Trunk vase as dark as you will see
- 220 Nwood 11" IB Tree Trunk vase. Has a small wrinkle in the glass- NOT DAMAGE!
- 221 Nwood 10.5" Aqua Opal Diamond Points vase
- 222 Nwood 10" ice blue Leaf Columns vase- Scarce
- 223 Nwood 8.25" white Drapery vase- SWEET!
- 224 Nwood green large Tornado vase. Scarce color and pretty!
- 225 Nwood purple RIBBED Tornado vase. RARE! These just don't come up for sale very often.
- 226 Nwood AO Daisy & Drape ft'd vase. Butterscotch color
- 227 Nwood pastel AO Daisy & Drape vase. NICE!
- 228 Nwood AO Dandelion mug. Look at all of the opal on this one!
- 229 Beautiful GREEN G&C hatpin holder. SWEET!
- 230 RARE Nwood VASELINE round bushel basket. Has AWESOME pastel irid!
- 231 Nwood AO Round Bushel Basket. very even color
- 232 Nwood Lime Green round Bushel Basket- RARE
- 233 Nwood Lime Green Drapery candy dish. Scarce
- 234 Nwood IB Beaded Cable rosebowl. Great pastel
- 235 Nwood mari Beaded Cable rosebowl
- 236 Nwood AO Leaf & Beads rosebowl. opal 1/2 way down!
- 237 NWood Ice Blue Fruits and Flower compote
- 238 NWood bright mari Fruits and Flower compote
- 239 NWood ice green Fruits and Flower compote
- 240 Nwood ice blue 8 sided Bushel Basket. Scarce
- 241 Nwood DARK MARI G&C powder jar
- 242 NWood AO Fine Cut Roses candy dish. has cool opal running thru feet.. Almost a sapphire opal
- 243 Nwood AO Fine Cut & Roses candy dish
- 244 Nwood ice blue Fine Cut & Roses candy dish
- 245 Nwood ice green Peacock at Fountain compote. RARE
- 246 Nwood AO Heart & Flower compote. SUPER
- 247 Nwood AO Heart & Flower compote. SUPER Another winner!
- 248 Nwood dark mari Heart & Flower compote.
- 249 Nwood 10" IB Peacock at Urn ICS bowl. Scarce and frosty
- 250a NWood WHITE Grape Arbor 7pc tankard set FROSTY!
- 250b NWood ICE BLUE Grape Arbor 7pc tankard set FROSTY!
- 250c NWood MARIGOLD Grape Arbor 7pc tankard set FROSTY!
- 251 Nwood 10" white Peacock at Urn ICS bowl. FROSTY
- 252 Nwood 5" IB Peacock at Urn berry bowl.
- 253 Nwood 8.5" renninger blue Rose Show variant plate Scarce. Haven't sold one in awhile and this is a good one!
- 254 Nwood 9" blue Poppy SHow plate. Scarce
- 255 Nwood 9" ice green Poppy SHow plate. Scarce PRETTY PLATE!
- 256 Nwood 9" elec blue Peacocks stippled plate. WOW< HOT LOT!!!
- 257 Nwood 9" white Peacocks plate
- 258 Nwood 9" white Peacocks plate
- 259 Nwood 9" white Peacocks plate
- 260 Nwood 9" horehound Peacocks PCE bowl. RARE BOWL and a KNOCKOUT!
- 261 Nwood 9" aqua opal 3 Fruits Stippled plate. WHAT A PERFECT PLATE!
- 262 NWood 9" elec blue Good Luck PCE bowl.
- 263 NWood 9" mari stippled Good Luck PCE bowl.
- 264 Nwood 8.5" cobalt Good Luck ruffled bowl
- 265 Nwood 7" green Strawberry HG plate. Great color!
- 266 Nwood blue Poppy pickle dish.
- 267 Nwood 12.5" dark mari Tree Trunk midsize vase
- 268 Nwood 12.5" dark IB Tree Trunk midsize vase WOW!!!
- 269 Nwood 12.5" ice green Tree Trunk midsize vase WOW!!! pushing lime
- 270 Nwood 13.5" ice blue Thin Rib mid size vase.
- 271 Nwood 13.5" ice green Thin Rib mid size vase. RARE!
- 272 Nwood Ice Blue Peacock at Fountain 3 pc berry set
- 273 Nwood 8.5" AO G&C stippled PCE bowl. Butterscotch
- 274 Nwood Ice Blue G&C stippled PCE bowl. One of the nicest IB bowls you will see.
- 275 Nwood 9" IB Nippon PCE bowl. Scarce
- 276 Nwood 9" IB Nippon PCE bowl. This owner loved pairs! Have you noticed?!
- 277 Nwood 8.5" IB Wishbone ft'd bowl. RARE
- 278 Nwood 8.5" purple Wishbone ft'd bowl.
- 279 Nwood 8.5" mari Wishbone ft'd bowl.
- 280 Nwood elec green G&C banana boat. Smokin'!
- 281 Nwood ice blue G&C banana boat. Scarce
- 282 Nwood purple Raspberry milk pitcher
- 283 Nwood dark mari Peacock at Fountain punch set. DARK!!!!
- 284 Nwood purple Acorn Burr water pitcher w/2 tumblers DARK RICH COLOR!
- 285 Nwood purple Acorn Burr 7pc punch set VERY HARD TO FIND!
- 286 Nwood 13.5" blue Tree Trunk mid-size vase. Scarce
- 287 Nwood 12" mari Tree Trunk mid-size vase. NICE!
- 288 Nwood 7.5" purple Tree Trunk vase
- 289 Nwood 7" mari Tree Trunk vase
- 290 Fenton 17" blue Diamond Rib Spearhead vase
- 291 Fenton 17" mari Rustic vase
- 292 Nwood mari G&C biscuit jar. NICE!
- 293 Nwood mari 5 pc Grape & Gothic Arches berry set

- 294 Fenton 6.25" purple Diamond Rib squatty vase  
 295 West 8" green Corinth vase. Scarce color  
 296 Nwood Horehound? G&C small punch bowl and base. Real odd color- see photos  
 297 Nwood purple G&C low fruit bowl.  
 298 Imp mari Feild Flower 5pc water set  
 299 Imperial mari Windmill water pitcher. Real bright color!!  
 300 Duagan mari Butterfly & Tulip ft'd bowl/ GREAT SHAPE!  
 301 Dugan mari Brooklyn Bridge ruffled bowl. NICE  
 302 Dugan purple Wreath Cherry table set. sugar lid missing  
 303 Imp 8" AMBER Heavy Grape plate  
 304 Imp 10" mari Morning Glory flared midsize vase  
 305 NWood AO round Bushel Basket. NICE  
 306 Nwood green 7pc G&C berry set.  
 307 Fenton? 8" mari Rib & Panel ruffled vase. SCARCE  
 308 Fenton 8.5" reverse amberina Dragon & Lotus ICS bowl. Scarce bowl in this color  
 309 Fenton 9" mari Peacock at Urn ruffled bowl  
 310 Fenton 10" mari 2 Flowers ICS ft'd bowl  
 311 Nwood 9" mari G&C ruffled bowl  
 312 Millersburg 10" rad purple Strawberry Wreath ruffled bowl  
 313 Millersburg 10" green Rays & Ribbons flared bowl  
 314 Millersburg 10" rad mari Whirling Leaves ruffled bowl  
 315 Millersburg 10" mari Rays & Ribbons ruffled bowl  
 316 Millersburg 10" rad mari Fleur de Lys ICS ft'd bowl- Scarce  
 317 Millersburg 10" rad mari Fleur de Lys ICS bowl- Scarce collar base.  
 318 Millersburg mari 7 & 8" Blackberry Wreath 3-1 edge bowls  
 319 Millersburg rad mari Primrose ruffled bowl.  
 320 Millersburg 9" rad purple Swirl Hobnail vase  
 321 Millersburg 10" purple Fleur de Lys flared 3-1 edge bowl  
 322 Millersburg 7" lite mari Grape Wreath CRE bowl.  
 323 Nwood emerald green Poppy Show plate. THIS is an OUSTANDING plate! just to be accurate- I did find a TINY TINY flick on a petal.. and I LOOKED HARD to find it. This shouldn't be a concern on this plate.  
 324 Nwood 9" BLASTING ELEC PURPLE 3 Fruits stippled plate. BAM!  
 325 Nwood 9" mari Good Luck PCE bowl  
 326 Nwood 11" elec blue Tree Trunk vase. Stunner!  
 327 Nwood AO HEart & Flower compote. WOW  
 328 Nwood AO Beaded Cable rosebowl.  
 329 Millersburg 9" rad purple Whirling Leaves CRE SQUARE bowl.  
 330 Millersburg 10" purple Seaweed 3-1 edge bowl.  
 331 Millersburg 10" green Fleur de Lys CRE ruffled bowl.  
 332 Millersburg 7.5" mari Peacock Shotgun 3-1 edge bowl.  
 333 Millersburg 6" mari Blackberry Wreath bowl  
 334 RARE 6.25" purple Wide Panel and Diamond vase. just 3 or 4 purple ones reported.  
 335 Fenton GREEN Butterfly & Berry spooner  
 336 VERY RARE DARK MARI Starflower water pitcher. Most would call this pumpkin mari. What STUNNING pitcher. Just a few known in marigold.  
 337 Fenton 7" VASELINE Leaf Chain ruffled bowl  
 338 Nwood 11.5" Ice Green Diamond Points vase. Scarce  
 339 Nwood dark mari G&C tumbler  
 340 VERY RARE Imperial RED Lustre Rose ft'd fruit bowl This is as RED as RED gets! DON't miss this one!  
 341 Dugan 6" mari Lined Lattice squatty vase.  
 342 Set of 3 Imp mari Lustre Rose tumblers  
 343 Imp 9" mari Open Rose Plate  
 344 Imp green Loganberry vase and 5" berry bowl  
 345 Millersburg 10" green Primrose ruffled bowl  
 346 Fenton 9" HOT MARI Peacock at Urn flat plate. WOW!!!  
 347 Dugan 9" PO Apple Blossom Twigs low ruffled plate  
 348 Imp 6" mari Thin Rib & Drape vase  
 349 Fenton 8" mari Stag & Holly ft'd ICS bowl.  
 350 Mburg rad mari Holly bon bon.



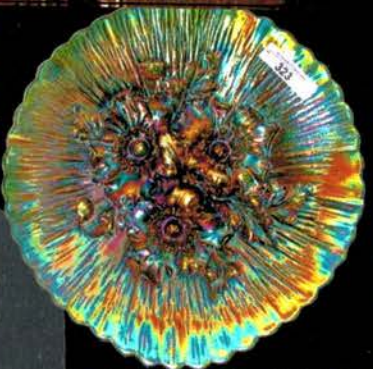


**Jim Wroda Auctions**  
58 East Main St  
Westfield, NY 14787

PRESORTED  
FIRST CLASS MAIL  
U.S. POSTAGE  
**PAID**  
CELINA, OH  
PERMIT NO. 99



3-3\*\*\*\*\*AUTO\*\*MIXED AADC 430  
LEE MARKLEY  
502C N. BROADWAY  
PO BOX 306  
MENTONE IN 46539-0306



**Keystone Carnival Glass Convention 2018 - Grantsville, PA**

Jim Wroda Auctioneer AU - 005729  
OH Office Jim's cell: 937.459.9556 Email us: jimwroda@mac.com  
Rapid Printing - Greenville, Ohio - 937-548-1010