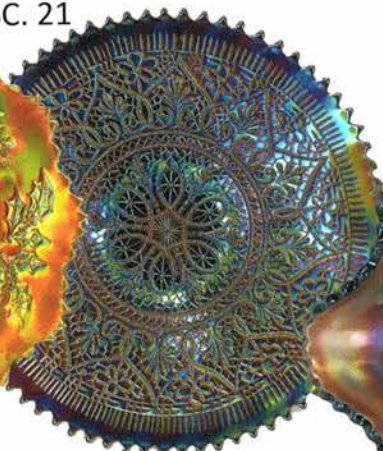
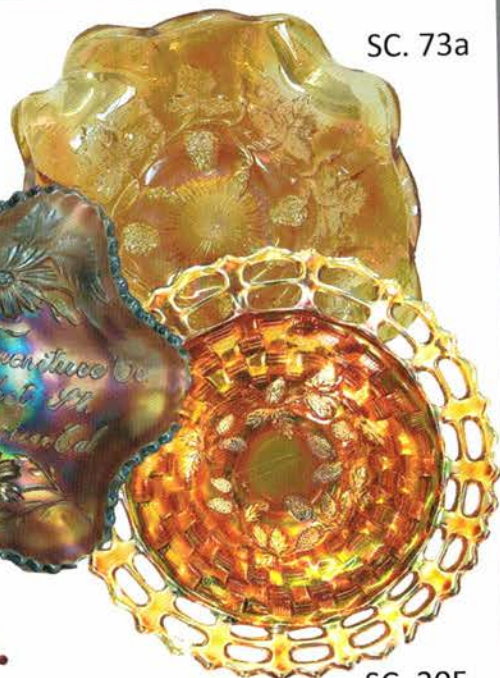
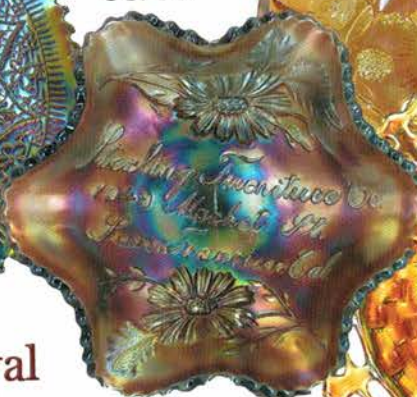


SC. 21



SC. 36



SC. 73a

So. California Carnival  
Glass Club Convention  
Saturday, March 10 9:30 a.m.



SC. 6, 209

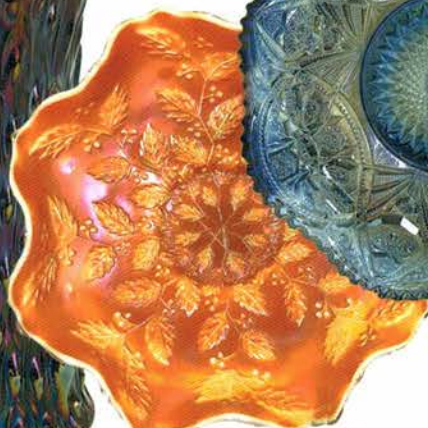
# Carnival Glass 2018 Auctions

SC. 205



TX. 10

TX. 35



TX. 25



TX. 51



TX. 93

Texas Carnival  
Glass Club Convention  
Saturday, March 24 9:30 a.m.  
Open to the Public

Seeck Auctions  
Jim & Jan Seeck  
641-424-1116





Online auction preview and bidding at [www.seeckauktion.com](http://www.seeckauktion.com)



# Southern California Carnival Glass Club Convention

Jim & Jan Seeck

**Saturday, March 10, 2018 — 9:30 A.M.**

641-424-1116

*Azure Hotel & Suites 1945 E. Holt Blvd.*

*Ontario, California 91764*

❧ Ray & RayAnn Hitchcock Collection ❧

# Texas Carnival Glass Club Convention

**Saturday, March 24, 2018 — 9:30 A.M.**

*Wyndham Dallas Suites- Park Central*

*7800 Alpha Road Dallas, Texas 75240*

Open to the Public

**Previews: Friday Evenings**

◆◆◆ **ABSENTEE and LIVE BIDDING is available on-line** ◆◆◆

through Auction Flex at: [www.seeckauktion.com](http://www.seeckauktion.com)

**NO BUYER'S PREMIUM -- EMAIL: [jimjan@seeckauktion.com](mailto:jimjan@seeckauktion.com)**

## Lodging

**March 10 Auction:** If staying at the hotel, call direct (Press 0) for room reservations: 909-390-7778. Cutoff date for rate is Feb 22nd, 2018. **San Diego / Southern Calif. Convention info:** Contact Jeff Adams at 661-718-3831 or [jeffnadine@msn.com](mailto:jeffnadine@msn.com)  
Club Website: [www.socalcarnivalglassclub.com](http://www.socalcarnivalglassclub.com)

**March 24 Auction:** If staying at the Hotel, Call the hotel directly at 972-233-7600 (option 2) to make your reservation. Let them know you are with the Texas Carnival Glass Club - March 2018. Group code is: 03146822CG **Texas Club Convention info:** Contact President Emmett Morgan at: 979-836-7896 .Club Website: [www.texas carnival glass.org](http://www.texas carnival glass.org)

**Terms:** Cash or Check, VISA, MasterCard and Discover accepted w/proper ID. 4% Clerking Fee on all purchases made using credit cards. Announcements made day of sale take precedence over any printed information.

\*\* Sales Tax will be charged, please bring your tax-exempt numbers.

## ABSENTEE BIDDING OPTIONS

- 1) **Call us by phone at:** (641) 424-1116
- 2) **Prebid: Enter your bids from our website into our online catalog through the Auction Flex system.**
  - *An exciting advantage of entering your bids online yourself, is the option to be notified by email if you are outbid on an item. You will know when you are outbid on an item and you can increase your bid on that item or bid on something else.*
- 3) **Live Phone Bidding: Is available on pieces with an estimated sale price of \$500 or more.**  
If you would like to participate in live phone bidding, contact us by **the Thursday before the auction.**
- 4) **Real-time Bidding:** Bid live during the auction through Auction Flex live webcast bidding.

**There is a \$7 handling charge for each successful bid. Shipping and insurance charges are additional.**

Bidders will be notified by phone/email if their bid(s) are successful. This will be done 1 - 3 days after the auction.

## BID INCREMENTS:

\$1 - \$100/\$5	\$100 - \$200/\$10	\$200 - \$700/\$25	\$700 - \$1,500/\$50
\$1,500 - \$3,000/\$100	\$3,000 - \$5,000/\$250	\$5000+	Auctioneer's Discretion



- 1. Vintage 7" plate - green - pretty
- 2. Vintage 7" plate - blue - a beauty
- 3. Holly & Berry hddld nappy - peach opal
- 4. Flute ftd salt - marigold - not sure I have seen this one before
- 5. Smooth Rays ruffled compote - marigold on milk glass
- 6. **Butterfly ornament - marigold - very scarce, a collector's favorite**
- 7. Louisa rose bowl - green
- 8. **Stag & Holly chop plate - marigold - dark & fantastic, one of the nicest ones!**
- 9. N's Peacock at Urn IC sauce - purple - nice
- 10. N's Peacock at Urn IC sauce - marigold - dark, pretty
- 11. **Shell & Sand 9" plate - purple - very pretty plate, quite rare**
- 12. Shell & Sand 9" plate - green - scarce
- 13. Leaf & Beads rose bowl - aqua opal
- 14. Leaf & Beads rose bowl - green - pretty
- 15. Leaf & Beads rose bowl - blue - nice
- 16. Leaf & Beads rose bowl - purple
- 17. Leaf & Beads rose bowl - marigold - nice
- 18. Leaf & Beads rose bowl - blue opal - not Carnival Glass
- 19. **Hearts & Flowers 9" plate w/ribbed back - ice blue - very scarce & desirable, nice**
- 20. **Hearts & Flowers 9" plate w/ribbed back - green - scarce color, nice**
- 21. **Hearts & Flowers 9" plate w/ribbed back - purple - super pretty for these**
- 22. **Hearts & Flowers 9" plate w/ribbed back - marigold - very pretty**
- 23. **Luster Rose ruffled fruit bowl - purple - a beauty, scarce color**
- 24. Daisy & Drape flared out vase - aqua opal - scarce
- 25. Footed Prism Panels vase - marigold
- 26. **Acorn Burrs 8 pc. punch set - green - rare set & highly desirable, a nice set**
- 27. **Acorn Burrs 8 pc. punch set - marigold - also very nice**
- 28. N's Eight Sided Bushel Basket - white
- 29. **Peacocks 9" plate w/ribbed back - green - very pretty**
- 30. Peacocks 9" plate w/ribbed back - purple
- 31. Peacocks 9" plate w/ribbed back - ice green - nice
- 32. Peacocks 9" plate w/ribbed back - marigold - pretty
- 33. **Beaded Cable rose bowl - ice blue - scarce color**
- 34. Beaded Cable rose bowl - aqua opal - nice, tiny pinpoint on toe
- 35. Beaded Cable rose bowl - marigold - has rayed interior
- 36. **Sterling Furniture Co. advertising ruffled bowl - amethyst - California advertising!**
- 37. Orange Tree 9" plate - blue - very pretty
- 38. Orange Tree w/trunk 9" plate - marigold - dark, nice
- 39. Orange Tree 9" plate - light marigold - many may call this clambroth
- 40. Fluffy Peacock 7 pc. water set - amethyst - nice matching set
- 41. **Little Flowers 10" chop plate - marigold - very rare plate, very nice for these, has light irid. spot near edge**
- 42. Orange Tree loving cup - amethyst - very minor nick on corner of base
- 43. Orange Tree loving cup - marigold - nice
- 44. Wishbone 10" ruffled bowl - marigold - very pretty
- 45. **Captive Rose 9" plate - green - pretty, scarce**
- 46. Captive Rose 9" plate - amethyst - nice for these
- 47. Captive Rose 9" plate - blue - fantastic irid.!
- 48. Captive Rose 9" plate - marigold - nice
- 49. **Wreath of Roses 5 pc. round punch set w/Persian Medallion interior - amethyst - scarce, nice**
- 50. **Wreath of Roses 8 pc. round punch set w/Persian Medallion interior - blue - scarce color, nice**
- 51. Lions IC shaped bowl - marigold
- 52. **Open Rose 9" plate - purple - scarce, very pretty**
- 53. Open Rose 9" plate - amber - very tiny pinpoint on rose, pretty
- 54. Paneled Dandelion 7 pc. tankard water set - green - scarce, nice
- 55. Windflower hddld nappy - marigold - pretty
- 56. Ten Mums 10" ruffled bowl - amethyst - very pretty
- 57. Ten Mums 10" ruffled bowl - green - nice
- 58. Ten Mums 10" ruffled bowl - blue - nice
- 59. Ten Mums 10" ruffled bowl - marigold - nice
- 60. Concave Diamond 7 pc. lidded water set - celeste blue - nice set
- 61. **Rose Show Variant 9" plate - marigold - roughness & wear on petals, scarce**
- 62. Fine Cut & Roses rose bowl - ice blue - dark, nice
- 63. Fine Cut & Roses rose bowl - green - pretty
- 64. Fine Cut & Roses rose bowl - marigold - nice
- 65. **Utah Liquor Co. advertising 6" plate - amethyst - nice example, very scarce**
- 66. Holly 9" plate - amethyst - nice
- 67. Holly 9" plate - green - pretty
- 68. Holly 9" plate - black amethyst - rare to find this color in a plate
- 69. Holly 9" plate - blue - very pretty
- 70. Holly 9" plate - white - minor nick on base
- 71. Holly 9" plate - marigold - dark
- 72. Holly 9" plate - marigold - lighter color, super pretty
- 73. Holly 9" plate - light marigold - many would call it clambroth
- 73a. **M'burg Strawberry Wreath 6 1/2" square shaped bowl - vaseline - rare whimsy shape in a rare color! Great piece!**
- 74. **Peacock at the Fountain ruffled fruit bowl - purple - scarce, very nice**
- 75. Pinched Swirl rose bowl - peach opal
- 76. **Good Luck 9" plate w/BW back - green - very pretty for these**
- 77. Good Luck 9" plate w/BW back - marigold - nice
- 78. Peacock at the Fountain 7 pc. water set - blue - scarce set, 1 tumbler has nick on base
- 79. Three Row Open Edge ruffled bowl - white - scarce
- 80. Waterlily ftd ruffled sauce - lime green
- 81. **Wreath of Roses 7 pc. round shape punch set w/ Vintage interior - amethyst - super pretty**
- 82. **Wreath of Roses round punch bowl & base w/ Vintage interior - marigold - large polished chips on base of bowl**
- 83. Stag & Holly lg ftd IC shaped bowl - blue
- 84. M'burg Nesting Swan ruffled bowl - marigold - radium, nice
- 85. **Poinsettia & Lattice ftd ruffled bowl - blue - nice**
- 86. Garland rose bowl - marigold
- 87. **Acorn Burrs 7 pc. water set - purple - nice set, 1 tumbler has chip**
- 88. **Acorn Burrs 7 pc. water set - marigold - another nice set**
- 89. Grape & Cable sweetmeat - purple - very pretty example, very tiny nick on inner rim of base
- 90. Peacocks ruffled bowl w/ribbed back - blue - very pretty, electric highlights
- 91. Waterlily lg size ftd IC shaped bowl - marigold
- 92. Open Rose 9" ruffled bowl - purple
- 93. **Grape & Cable banana boat - ice blue - very pretty example, very scarce**



- \_\_\_ 94. Grape & Cable banana boat - purple - nice
- \_\_\_ 95. **Panther ftd centerpiece bowl - marigold - always in demand, nice**
- \_\_\_ 96. Honeycomb & Beads crimped edge 6" plate - purple
- \_\_\_ 97. **Oriental Poppy 7 pc. tankard water set - purple - always in demand**
- \_\_\_ 98. **Oriental Poppy 7 pc. tankard water set - marigold - pretty set**
- \_\_\_ 99. Vintage fernery - green
- \_\_\_ 100. Vintage fernery - marigold
- \_\_\_ 101. Fenton Rib Optic water pitcher w/lid - celeste blue w/cobalt handle, Stretch Glass
- \_\_\_ 102. **Peacock at the Fountain 8 pc. punch set - marigold - very nice set**
- \_\_\_ 103. Grape & Cable whiskey decanter - purple - very minor roughness where stopper fits in
- \_\_\_ 104. Persian Medallion bonbon - lime green
- \_\_\_ 105. **N's Peacock at Urn master IC bowl - ice green - scarce & highly desirable**
- \_\_\_ 106. **N's Peacock at Urn master IC bowl - ice blue - super pretty example, manufacture sharp point on edge**
- \_\_\_ 107. N's Peacock at Urn master IC bowl - purple - very nice
- \_\_\_ 108. N's Peacock at Urn master IC bowl - marigold - nice
- \_\_\_ 109. Daisy & Plume rose bowl w/Rayed interior - green
- \_\_\_ 110. Daisy & Plume rose bowl w/Rayed interior - marigold
- \_\_\_ 111. **Apple Blossom Twigs 9" plate w/smooth edge - purple - scarce, nice**
- \_\_\_ 112. Apple Blossom Twigs 9" plate w/smooth edge - peach opal - missing irid. on petal of flower
- \_\_\_ 113. **Wishbone water pitcher w/1 tumbler - purple - highly desirable & nice, slight peeling on lip**
- \_\_\_ 114. Kittens 2 sides up dish - marigold
- \_\_\_ 115. Kittens 4 sides up dish - marigold
- \_\_\_ 116. **Rose Show 9" plate - emerald green - very rare piece, nicks on rose & tiny nick on edge**
- \_\_\_ 117. **Rose Show 9" plate - blue - scarce**
- \_\_\_ 118. Rose Show 9" plate - marigold - nice
- \_\_\_ 119. Rose Show 9" plate - white - very pretty
- \_\_\_ 120. Good Luck ruffled bowl w/ribbed back - blue - electric highlights
- \_\_\_ 121. **Enameled Forget Me Not 7 pc. tankard water set - marigold - very scarce set, nice, one tumbler has burst on top edge**
- \_\_\_ 122. Inverted Feather cracker jar - green
- \_\_\_ 123. Fenton's Peacock at Urn 9" plate - marigold - nice
- \_\_\_ 124. Persian Medallion rose bowl - blue - super pretty
- \_\_\_ 125. Persian Medallion rose bowl - marigold
- \_\_\_ 126. **M'burg 1911 Campbell & Beesley Co. advertising handgrip plate - amethyst - rare piece**
- \_\_\_ 127. Dugan Cherries ruffled bowl - purple
- \_\_\_ 128. **Two Flowers ftd chop plate - marigold - very scarce, nice**
- \_\_\_ 129. Wreathed Cherry 7 pc. banana boat shaped berry set - white - scarce set
- \_\_\_ 130. Two Flowers ftd IC shaped master berry bowl - blue
- \_\_\_ 131. Orange Tree 10 pc. round punch set - marigold
- \_\_\_ 132. **Concord 3 in 1 edge bowl - green - very pretty**
- \_\_\_ 133. Nippon 9" plate w/BW back - marigold - very scarce plate, nice
- \_\_\_ 134. Grape & Cable 7 pc. water set - purple
- \_\_\_ 135. Florentine #349 10 1/2" candlesticks - marigold
- \_\_\_ 136. **Scroll Embossed 9" plate - purple - pretty w/green irid.**
- \_\_\_ 137. Scroll Embossed 9" plate - aqua - scarce color
- \_\_\_ 138. Scroll Embossed 9" plate - marigold
- \_\_\_ 139. Stretch Glass Fenton #200 guest set bottom - celeste blue - no tumbler
- \_\_\_ 140. Peacock at Urn ruffled compote - marigold - dark
- \_\_\_ 141. Embroidered Mums ruffled bowl w/ribbed back - blue
- \_\_\_ 142. **Spector's Department Store / Heart & Vine 9" plate - marigold - scarce, very nice example**
- \_\_\_ 143. Three Fruits 9" plate w/plain back - purple - pretty
- \_\_\_ 144. Stag & Holly giant rose bowl - marigold - very nice, tiny nick on collar base
- \_\_\_ 145. **Dandelion 6 pc. tankard water set - purple**
- \_\_\_ 146. Four Flowers Variant 9" plate - green - very pretty
- \_\_\_ 147. **Rustic 17 1/2" funeral vase - marigold - dark, nice**
- \_\_\_ 148. Ten Mums 3 in 1 edge bowl - amethyst
- \_\_\_ 149. Peacock & Grape 9" plate - marigold - very nice
- \_\_\_ 150. Wreath of Roses 8 pc. ruffled punch set w/Persian Medallion interior - green - super nice set
- \_\_\_ 151. N's Bushel Basket - ice green
- \_\_\_ 152. Floral & Grape 7 pc. water set - amethyst - pretty set
- \_\_\_ 153. Persian Medallion hair receiver - marigold
- \_\_\_ 154. Grape & Cable sweetmeat - purple
- \_\_\_ 155. Three Row 7" plate AND 6" IC bowl - marigold
- \_\_\_ 156. **Leaf Chain 9" plate - blue - scarce**
- \_\_\_ 157. N's Peacock at Urn IC sauce - marigold
- \_\_\_ 158. N's Peacock at the Fountain punch bowl base - purple
- \_\_\_ 159. Cherry Chain chop plate - light marigold - some may call clambroth
- \_\_\_ 160. Lot of 3 pieces - blue Stretch is perfume that has been polished down
- \_\_\_ 161. Many Fruits 11 pc. round punch set - marigold
- \_\_\_ 162. Lot of 4 tumblers - all amethyst
- \_\_\_ 163. **Dreibus Parfait Sweets advertising plate - very nice plate, some may call lavender**
- \_\_\_ 164. Dugan Heavy Grape 10 1/2" ruffled bowl - purple - very scarce bowl & highly desired
- \_\_\_ 165. Three Fruits 9" plate w/plain back - marigold - nice
- \_\_\_ 166. Grape & Cable cracker jar - purple - nice
- \_\_\_ 167. Horse Medallion ftd rose bowl - marigold
- \_\_\_ 168. **Fanciful 9" plate - purple - nice**
- \_\_\_ 169. Fanciful 9" plate - white - nice
- \_\_\_ 170. **Stippled Strawberry 9" plate w/ribbed back - scarce plate, nice**
- \_\_\_ 171. Lot of 7 Imperial Grape water goblets - marigold
- \_\_\_ 172. **Peacock at the Fountain 7 pc. berry set - blue - pretty set, one of the sauces is purple**
- \_\_\_ 173. Bouquet water pitcher & 1 tumbler - marigold
- \_\_\_ 174. Apple Blossom Twigs 9" plate - blue
- \_\_\_ 175. Apple Blossom Twigs 9" plate - marigold
- \_\_\_ 176. **Wishbone epergne - purple - scarce & desirable**
- \_\_\_ 177. Buzz Saw lg size cruet - marigold - no stopper
- \_\_\_ 178. **Peacock at the Fountain 4 pc. table set - purple - super pretty set!**
- \_\_\_ 179. Acanthus chop plate - marigold
- \_\_\_ 180. Drapery rose bowl - aqua opal - butterscotch
- \_\_\_ 181. Imperial Grape wine bottle - purple
- \_\_\_ 182. **Eat Paradise Sodas advertising plate - amethyst - nice**
- \_\_\_ 183. Stippled Three Fruits ruffled bowl w/ribbed back - blue opal - not Carnival Glass
- \_\_\_ 184. Strawberry 9" plate w/plain back - purple - pretty
- \_\_\_ 185. Grape & Cable 8 pc. punch set - marigold - nice
- \_\_\_ 186. Peacock & Grape ruffled bowl - green
- \_\_\_ 187. Stippled Grape & Cable humidior - marigold - always in demand
- \_\_\_ 188. **Shell 9" plate - smoke - nice one**
- \_\_\_ 189. Blackberry Spray JIP CRE hat - marigold
- \_\_\_ 190. Tree Trunk 12 1/2" midsize vase - purple
- \_\_\_ 191. Wide Panel 14 1/2" chop plate - marigold
- \_\_\_ 192. **Embroidered Mums 9" plate w/ribbed back - ice green - very scarce plate & nice**
- \_\_\_ 193. Grape & Cable 7 pc. berry set - purple
- \_\_\_ 194. Pair of Enameled tumblers - marigold
- \_\_\_ 195. Stippled Three Fruits 9" plate w/ribbed back - blue



- \_\_\_ 196. Singing Birds 7 pc. water set - green - scarce & desirable, nice
- \_\_\_ 197. Rose Show ruffled bowl - blue opal - not Carnival Glass
- \_\_\_ 198. Holly ruffled bowl - marigold on moonstone - super pretty & rare bowl
- \_\_\_ 199. Apple Tree water pitcher - marigold - dark & beautiful! Outstanding pitcher!
- \_\_\_ 200. Stippled & Banded Grape & Cable banana boat - blue - rare piece
- \_\_\_ 201. Hearts & Flowers ruffled compote - blue opal - not Carnival Glass
- \_\_\_ 202. Hattie chop plate - marigold - very pretty plate & quite scarce
- \_\_\_ 203. Lot of 3 pieces - all blue opal - not Carnival Glass

- \_\_\_ 204. Ten Mums tumbler - blue
- \_\_\_ 205. Blackberry Open Edge 7" plate - marigold - super example of this rare plate!
- \_\_\_ 205a. Leaf & Beads rose bowl - aqua opal - butterscotch, nice
- \_\_\_ 206. Poppy Show 9" plate - green - very rare plate & nice, has nick on base
- \_\_\_ 207. Poppy Show 9" plate - blue - another very pretty plate, minor nick on base
- \_\_\_ 208. Poppy Show 9" plate - marigold - pinpoint on poppy
- \_\_\_ 209. Butterfly ornament - marigold - super nice, hard to believe two in one auction!

Lots 210 to 251 - only available for viewing online.

## ◆◆◆ Saturday, March 24 ◆◆◆

- \_\_\_ 1. Hattie deep round bowl - purple - nice
- \_\_\_ 2. Hattie deep round bowl - smoke - nice
- \_\_\_ 3. Colonial #695 8 1/2" candlesticks - celeste blue
- \_\_\_ 4. Florentine #449 8 1/2" candlesticks - celeste blue
- \_\_\_ 5. Ripple 9 1/2" vase - purple - 3 3/8" base, nice
- \_\_\_ 6. Ripple 8 1/2" vase - green - 3 3/8" base
- \_\_\_ 7. Ripple 8" vase - marigold - 3 3/8" base, nice
- \_\_\_ 8. Imperial Grape low ruffled bowl - lavender - pretty
- \_\_\_ 9. Blackberry Spray Variant square shaped hat - vaseline - has 2 sets of berries
- \_\_\_ 10. Tree Trunk 13" elephant's foot funeral vase - purple - absolutely fantastic, beautiful & extremely rare
- \_\_\_ 11. Freefold 12" vase - purple - has a pour spout
- \_\_\_ 12. Stippled Peacocks 9" plate w/ribbed back - blue - very pretty!
- \_\_\_ 13. Pansy dresser tray - amber
- \_\_\_ 14. Paneled Dandelion 7 pc. water set - marigold - scarce, couple tumblers have chips on base
- \_\_\_ 15. Hearts & Flowers 9" plate w/ribbed back - purple - super pretty!
- \_\_\_ 16. Hearts & Flowers 9" plate w/ribbed back - marigold - very nice
- \_\_\_ 17. Australian Trailing Flowers 7" bowl - marigold - minor pinpoint on one point
- \_\_\_ 18. Stag & Holly spt ftd ruffled bowl - red - 2 cleats have tiny nicks, scarce
- \_\_\_ 19. Stag & Holly spt ftd ruffled bowl - blue - one cleat has chip
- \_\_\_ 20. Concord 9" plate - amethyst - rare, chip on base
- \_\_\_ 21. Concord 9" plate - marigold - very rare color & very nice for these
- \_\_\_ 22. Orange Tree 11 pc. punch set - blue - base has 2 large heat checks, 2 cups have chips
- \_\_\_ 23. Orange Tree 8 pc. punch set - marigold - 3 cups have damage
- \_\_\_ 24. Acanthus deep round bowl - purple - super pretty
- \_\_\_ 25. Holly ruffled bowl - marigold on moonstone - fantastic bowl, rare & pretty!
- \_\_\_ 26. M'burg Grape Wreath Variant 8" ruffled bowl - amethyst - radium
- \_\_\_ 27. Poppy Show 9" plate - ice green - super pretty, rare color
- \_\_\_ 28. Poppy Show 9" plate - ice blue - a dandy
- \_\_\_ 29. Waterlily ftd ruffled master berry bowl - marigold
- \_\_\_ 30. Fenton's Peacock at Urn 8 ruffled bowl - Persian Blue - very rare bowl & nice
- \_\_\_ 31. Single Flower tri-cornered crimped edge bowl - purple - scarce
- \_\_\_ 32. Flute toothpick - blue - extremely rare color, highly desired piece, neat!
- \_\_\_ 33. Lot of 2 Flute toothpicks - purple - one has damage on base
- \_\_\_ 34. Horse Medallion 7" plate - marigold - nice
- \_\_\_ 35. Wheels 10" round bowl - blue - only one I have ever seen, Imperial Blue!
- \_\_\_ 36. Singing Birds 8 pc. water set - green - very nice
- \_\_\_ 37. Singing Birds 7 pc. water set - purple - very nice for these
- \_\_\_ 38. Heavy Grape 8" plate - purple - pretty
- \_\_\_ 39. Peacock & Grape spt ftd 9" plate - marigold
- \_\_\_ 40. Stippled Grape & Cable Variant 9" plate w/ribbed back - sapphire - fantastic, incredible plate
- \_\_\_ 41. Stippled Grape & Cable 9" plate w/BW back - green - super pretty
- \_\_\_ 42. Tree Trunk 10 1/2" vase - ice blue - tiny nick on seam
- \_\_\_ 43. Tree Trunk 11" vase - sapphire - very scarce color, nice
- \_\_\_ 44. Tree Trunk 11" vase - blue
- \_\_\_ 45. Tree Trunk 10" vase - green
- \_\_\_ 46. Tree Trunk 10" vase - purple
- \_\_\_ 47. Peacocks PCE bowl w/ribbed back - ice blue - scarce & desirable
- \_\_\_ 48. Peacocks PCE bowl w/ribbed back - green - scarce color
- \_\_\_ 49. Peacocks PCE bowl w/ribbed back - blue - very pretty w/electric highlights
- \_\_\_ 50. M'burg Diamonds 6 pc. water set - amethyst - very nice set, one tumbler cracked
- \_\_\_ 51. Australian Kookaburra 10 1/2" float bowl - marigold - maybe the only one I have heard of in this color, extremely rare & highly desirable, great Australian piece!
- \_\_\_ 52. Australian Kookaburra 10 1/2" float bowl - dark - missing irid. in center, very rare
- \_\_\_ 53. M'burg Grape Leaves 3 in 1 edge bowl - marigold - radium, has point chipped
- \_\_\_ 54. Horse Medallion ftd IC shaped bowl - green - very nice, scarce color
- \_\_\_ 55. Two Flowers spt ftd 9" plate - marigold - very scarce item
- \_\_\_ 56. Golden Carp 10 1/2" oval tray - marigold - Eda, very rare & desirable
- \_\_\_ 57. Memphis 9 pc. ruffled fruit bowl set - green - very nice set, scarce
- \_\_\_ 58. Memphis 8 pc. ruffled fruit bowl set - purple - pretty set
- \_\_\_ 59. Memphis 10 pc. ruffled fruit bowl set - marigold - nice
- \_\_\_ 60. Blackberry Spray square shaped hat - red - scarce
- \_\_\_ 61. N's Peacock at Urn master IC bowl - ice green - scarce & nice
- \_\_\_ 62. N's Peacock at Urn IC sauce - ice green - nice
- \_\_\_ 63. N's Peacock at Urn master IC bowl - ice blue - very pretty example
- \_\_\_ 64. N's Peacock at Urn IC sauce - ice blue
- \_\_\_ 65. N's Peacock at Urn master IC bowl - white - nice
- \_\_\_ 66. N's Peacock at Urn IC sauce - white



- \_\_\_ 67. **Ns' Peacock at Urn master IC bowl - blue - super pretty bowl, scarce color**
- \_\_\_ 68. N's Peacock at Urn IC sauce - blue - nice
- \_\_\_ 69. N's Peacock at Urn master IC bowl - purple - always in demand
- \_\_\_ 70. N's Peacock at Urn IC sauce - purple
- \_\_\_ 71. N's Peacock at Urn master IC bowl - marigold - pretty, bird has yellow irid.
- \_\_\_ 72. **Broken Arches punch bowl & base - purple - very pretty set, rare**
- \_\_\_ 73. Fish 7" bowl - marigold - unusual piece
- \_\_\_ 74. Panther ftd ruffled master berry bowl - blue - scarce
- \_\_\_ 75. Rustic 11 1/2" vase - green - pretty
- \_\_\_ 76. M'burg Hobnail Swirl rose bowl - marigold - scarce
- \_\_\_ 77. Imperial Grape 6 pc. water set - purple - pitcher is very pretty
- \_\_\_ 78. N's Bushel basket - aqua opal - butterscotch, nice
- \_\_\_ 79. Smooth Panels 7 1/4" vase - red - 6 1/2" mouth, Stretch
- \_\_\_ 80. **Hearts & Flowers ruffled bowl w/ribbed back - blue - super pretty**
- \_\_\_ 81. **Hearts & Flowers ruffled bowl w/ribbed back - ice green - scarce item, nice**
- \_\_\_ 82. Hearts & Flowers ruffled bowl w/ribbed back - ice blue - pretty
- \_\_\_ 83. Hearts & Flowers ruffled bowl w/ribbed back - white - small sliver off back of one point
- \_\_\_ 84. Grape & Cable dresser tray - purple
- \_\_\_ 85. Grape & Cable dresser tray - marigold - nice
- \_\_\_ 86. Grape & Cable pin tray - purple
- \_\_\_ 86a. Grape & Cable pin tray - marigold
- \_\_\_ 87. #657 8 1/2" Candlesticks - vaseline
- \_\_\_ 88. #657 8 1/2" Candlesticks - russet
- \_\_\_ 89. **M'burg Many Stars ruffled bowl - amethyst - pretty radium irid., has 6 pt star**
- \_\_\_ 90. Octet dome ftd ruffled bowl - marigold - scarce pattern
- \_\_\_ 91. Peacock & Grape 3 in 1 edge bowl - amethyst
- \_\_\_ 92. Daisy & Drape flared out vase - aqua opal - small chip in side
- \_\_\_ 93. **Venetian rose bowl - marigold - rarest color they come in, super pretty & dark**
- \_\_\_ 94. Blackberry Spray 2 sides up hat - green slag - very unusual piece of glass, has 1" interior crack in side, probably in the making, weird piece
- \_\_\_ 95. **Stippled Grape & Cable PCE bowl w/ribbed back - ice blue - very pretty**
- \_\_\_ 96. **Stippled Grape & Cable Variant PCE bowl w/ribbed back - blue - electric, pretty**
- \_\_\_ 97. **Morning Glory 17" funeral vase - green - very scarce**
- \_\_\_ 98. **Morning Glory 13 1/2" funeral vase - purple - 10 1/2" mouth, scarce, nice**
- \_\_\_ 99. **Morning Glory 12 1/2" funeral vase - marigold - this is a great vase!**
- \_\_\_ 100. Acorn Burrs 7 pc. berry set - purple
- \_\_\_ 101. **Grape & Cable candle lamp - green - very scarce color**
- \_\_\_ 102. **Grape & Cable candle lamp - purple - always in demand**
- \_\_\_ 103. **Grape & Cable candle lamp - marigold - nice**
- \_\_\_ 104. **Imperial Flute 5" ruffled sauce - blue - a beauty, neat piece of Imperial blue, rare!**
- \_\_\_ 105. **Grape & Cable midsize 9 pc. punch set - marigold - very pretty set, scarce**
- \_\_\_ 106. Beaded Bullseye 8" vase - purple - super
- \_\_\_ 107. **Dragon & Strawberry ftd ruffled bowl - marigold - nice**
- \_\_\_ 108. Cosmos & Cane master berry bowl - white - shallow chips on flat of base
- \_\_\_ 109. Stag & Holly spt ftd 9" plate - marigold - very scarce
- \_\_\_ 110. **Rose Show 9" plate - blue - scarce & very pretty**
- \_\_\_ 111. **Rose Show 9" plate - purple - scarce color, tiny rub on one rose**
- \_\_\_ 112. **Cut Ovals 8 1/2" candlestick - vaseline - rare, rare, hopefully someone out there has the other one**
- \_\_\_ 113. **Hearts & Flowers ruffled compote - ice blue - very light color, nice**
- \_\_\_ 114. **Hearts & Flowers ruffled compote - aqua opal - pastel & very pretty**
- \_\_\_ 115. **Hearts & Flowers ruffled compote - aqua opal - butterscotch & beautiful**
- \_\_\_ 116. **Hearts & Flowers ruffled compote - purple - nice**
- \_\_\_ 117. **Hearts & Flowers ruffled compote - blue - pretty, rough spot on base, partially filled w/epoxy**
- \_\_\_ 118. **Imperial Grape punch bowl & base - purple - bowl is super**
- \_\_\_ 119. **Columbia dome ftd plate - marigold - scarce shape**
- \_\_\_ 120. **Acanthus chop plate - smoke - very pretty example**
- \_\_\_ 121. **Grape & Cable 7 pc. water set - green - scarce color**
- \_\_\_ 122. **Grape & Cable 8 pc. water set - purple**
- \_\_\_ 123. **Grape & Cable 6 pc. water set - marigold - nice**
- \_\_\_ 124. **Stippled Grape & Cable bonbon - green - pretty**
- \_\_\_ 125. **Stippled Three Fruits 9" plate w/ribbed back - aqua opal - super opal, very rare**
- \_\_\_ 126. **Stippled Three Fruits 9" plate w/ribbed back - sapphire - another super pretty plate w/great irid.**
- \_\_\_ 127. **Sunflower spt ftd ruffled bowl - marigold - nice**
- \_\_\_ 128. **Good Luck 9" plate w/BW back - purple - pretty**
- \_\_\_ 129. **M'burg Leaf & Little Flowers ruffled compote - marigold - radium, pretty**
- \_\_\_ 130. **M'burg Night Stars bonbon - olive green - radium, scarce**
- \_\_\_ 131. **Lattice & Grape 7 pc. tankard water set - marigold**
- \_\_\_ 132. **1910 Detroit Elk 7" ruffled bowl - amethyst - very pretty example**
- \_\_\_ 133. **Diamond Point 10 1/2" vase - aqua opal - scarce, nice**
- \_\_\_ 134. **Diamond Point 10" vase - ice blue - nice**
- \_\_\_ 135. **Diamond Point 10 1/2" vase - green - pretty**
- \_\_\_ 136. **Diamond Point 11" vase - purple**
- \_\_\_ 137. **Peacock at the Fountain butter dish - marigold - nice**
- \_\_\_ 138. **Nippon 9" plate w/BW back - purple - very scarce plate, nice**
- \_\_\_ 139. **Rustic 19 1/2" funeral vase - marigold - color from top to bottom**
- \_\_\_ 140. **M'burg Peacock Whimsey Proof - amethyst - radium, nice**
- \_\_\_ 141. **Heavy Grape punch bowl top - marigold - super nice**
- \_\_\_ 142. **Heavy Grape 7" ruffled bowl - blue - rare & highly desirable, nice**
- \_\_\_ 143. **Chesterfield 7" candlesticks - smoke - one has nick on rim under top**
- \_\_\_ 144. **Peacock & Grape ruffled bowl - lime green opal - scarce color**
- \_\_\_ 145. **Grape Arbor tumbler - blue - rare color**
- \_\_\_ 146. **Pulled Loop 12 1/2" vase - peach opal - nice**
- \_\_\_ 147. **Plaid ruffled bowl - green - scarce color**
- \_\_\_ 148. **Dugan Cherries ruffled bowl - peach opal**
- \_\_\_ 149. **Orange Tree loving cup - green - scarce color, nice**
- \_\_\_ 150. **Loganberry vase - purple - absolutely super!**
- \_\_\_ 151. **Pansy ruffled bowl - smoke - pretty**
- \_\_\_ 152. **Wishbone & Spades 6" plate - purple - silvery**
- \_\_\_ 153. **Diamond Spindle candlesticks - celeste blue**
- \_\_\_ 154. **1911 Atlantic City Elks 7" IC shaped bowl - blue - very nice for these!**
- \_\_\_ 155. **Butterfly & Berry 7 pc. water set - marigold - one tumbler has chip on base**
- \_\_\_ 156. **Fenton Peacock at Urn 9" plate - blue**
- \_\_\_ 157. **Fenton Peacock at Urn 9" plate - white - pretty irid.!**
- \_\_\_ 158. **Fenton Peacock at Urn 9" plate - marigold - super dooper!!**



- \_\_\_ 159. Ripple 17" funeral vase - green - very pretty irid. for these
- \_\_\_ 160. Ripple 19" funeral vase - marigold - another nice one
- \_\_\_ 161. Ripple 11 1/2" funeral vase - purple - 9 1/2" mouth, super pretty, nick on bottom ring
- \_\_\_ 162. Heavy Iris JIP hat - marigold - nice
- \_\_\_ 163. Grape & Cable cvd compote - purple - super pretty, rim of lid has been polished
- \_\_\_ 164. Imperial #3939 punch bowl & base - marigold
- \_\_\_ 165. Cherry Chain 10" ruffled bowl - blue
- \_\_\_ 166. Imperial Jewels 5" round bowl - purple - has Imperial Cross mark
- \_\_\_ 167. Drapery 9" vase - lime green - pretty, one toe has been slightly polished
- \_\_\_ 168. Good Luck PCE bowl w/BW back - purple
- \_\_\_ 169. Good Luck PCE bowl w/ribbed back - marigold - nice
- \_\_\_ 170. Thin Panels 19 1/2" funeral vase - red - non iridized, quite hard to find
- \_\_\_ 171. Thin Panels 20" funeral vase - green - non iridized
- \_\_\_ 172. Holly ruffled bowl - red - always in demand, nice
- \_\_\_ 173. Orange Tree 9" plate - white
- \_\_\_ 174. Wreath of Roses punch bowl top w/Vintage interior - marigold - nice
- \_\_\_ 175. Grape & Cable master IC bowl - ice green - super irid., very scarce
- \_\_\_ 176. Grape & Cable IC sauce - ice green
- \_\_\_ 177. Grape & Cable master IC bowl - purple - very pretty, slight slag effect in base
- \_\_\_ 178. Persian Medallion bonbon - aqua - scarce color
- \_\_\_ 179. Persian Medallion bonbon - marigold
- \_\_\_ 180. Tree Trunk 12 1/2" midsize vase - green - scarce, nice
- \_\_\_ 181. Tree Trunk 12" midsize vase - purple - nice
- \_\_\_ 182. Fenton Peacock at Urn ruffled compote - lime green
- \_\_\_ 183. M'burg Primrose ruffled bowl - amethyst - radium
- \_\_\_ 184. Optic & Buttons 8" round bowl - clambroth - has Imperial Cross mark
- \_\_\_ 185. Raspberry 5 pc. water set - purple - chips around base of pitcher, one tumbler cracked
- \_\_\_ 186. Feldman Bros. Furniture Basketweave Open Edge 2 sides up basket - marigold
- \_\_\_ 187. Many Fruits 8 pc. punch bowl set - purple - scarce, nice, one cup has chip on base
- \_\_\_ 188. Grape & Cable shot glass - marigold - extremely nice
- \_\_\_ 189. Little Flowers deep round bowl - blue - very pretty
- \_\_\_ 190. Ripple 12" vase - purple - 3 7/8" base, super pretty
- \_\_\_ 191. Ripple 7 3/4" vase - purple - 3 3/8" base, super
- \_\_\_ 192. Ripple 6 1/2" vase - purple - 2 7/8" base, super
- \_\_\_ 193. Etched Liquor 8 pc. set - marigold - elegant set
- \_\_\_ 194. Lotus & Grape 9" plate - blue - very nice for these
- \_\_\_ 195. Feather Stitch 6 ruffled bowl - green - scarce color
- \_\_\_ 196. Classic Arts powder jar base - marigold
- \_\_\_ 197. Peacock at the Fountain fruit bowl - purple - pretty
- \_\_\_ 198. Grape & Cable hatpin holder - marigold - nice example
- \_\_\_ 199. Drapery candy dish - ice blue
- \_\_\_ 200. Peacocks ruffled bowl w/ribbed back - aqua opal - nice example
- \_\_\_ 201. Peacocks ruffled bowl w/ribbed back - green - pretty
- \_\_\_ 202. Peacocks ruffled bowl w/ribbed back - purple - nice
- \_\_\_ 203. Beaded Cable rose bowl - aqua opal - butterscotch
- \_\_\_ 204. Rustic 15 1/2" midsize crimped edge vase - blue
- \_\_\_ 205. Rustic 15" midsize vase - amethyst
- \_\_\_ 206. Rustic 15 1/2" midsize vase - marigold
- \_\_\_ 207. Basketweave Open Edge JIP basket - red
- \_\_\_ 208. Basketweave Open Edge JIP basket - blue
- \_\_\_ 209. Stippled Three Fruits ruffled bowl w/ribbed back - aqua opal - scarce, has epoxy on a point
- \_\_\_ 210. Stippled Three Fruits ruffled bowl w/ribbed back - green - scarce color, nice
- \_\_\_ 211. Stippled Three Fruits ruffled bowl w/ribbed back - marigold - pretty
- \_\_\_ 212. N's Thin Rib 12 1/2" midsize vase - blue - scarce color
- \_\_\_ 213. N's Thin Rib 13" midsize vase - purple
- \_\_\_ 214. Pinecone 6" plate - amethyst - nice
- \_\_\_ 215. Pinecone 6" plate - blue
- \_\_\_ 216. Pinecone 6" plate - marigold - nice
- \_\_\_ 217. Good Luck ruffled bowl w/ribbed back - blue
- \_\_\_ 218. Good Luck ruffled bowl w/ribbed back - green - nice
- \_\_\_ 219. Panther ftd ruffled sauce - red - scarce
- \_\_\_ 220. Chrysanthemum lg ftd IC shaped bowl - green - scarce color
- \_\_\_ 221. N's Fine Rib 10 1/2" vase - lavender / horehound - neat colored vase
- \_\_\_ 222. Wreath of Roses 7 pc. punch set - blue / amethyst - bowl & 2 cups are blue, base & 3 cups are amethyst
- \_\_\_ 223. Double Scroll candlesticks - red - scarce
- \_\_\_ 224. Rustic 12" midsize vase - green
- \_\_\_ 225. Grape & Cable Variant PCE bowl w/plain back - purple - super fuchsia colored irid.
- \_\_\_ 226. Grape & Cable centerpiece bowl w/straight up points - ice green - super nice, quite scarce
- \_\_\_ 227. Grape & Cable butter dish - purple - roughness around edge of base
- \_\_\_ 228. Ripple 11" vase - aqua teal - 2 7/8" base
- \_\_\_ 229. Dugan Frit 8" vase - amethyst - very large piece of Frit
- \_\_\_ 230. Fenton Grape & Cable ruffled fruit bowl w/Persian Medallion interior - powder blue - very pretty, scarce color
- \_\_\_ 231. Grape & Cable candlesticks - purple
- \_\_\_ 232. Concord ruffled bowl - blue - pretty
- \_\_\_ 233. Concord ruffled bowl - amethyst
- \_\_\_ 234. Concord ruffled bowl - marigold - small nick on seam of base
- \_\_\_ 235. Little Fishes ftd ruffled master berry bowl - blue
- \_\_\_ 236. Acorn Burrs creamer - marigold
- \_\_\_ 237. Shell 9" plate - smoke - scarce & pretty
- \_\_\_ 238. Double Dutch ftd round bowl - purple - fantastic, feet are rough, bowl is beautiful
- \_\_\_ 239. Knights Templar Dandelion mug - ice green - scarce item
- \_\_\_ 240. Knights Templar Dandelion mug - ice blue - scarce
- \_\_\_ 241. Knights Templar Dandelion mug - marigold - nice
- \_\_\_ 242. Dandelion mug - aqua opal - very pretty
- \_\_\_ 243. Butterfly & Plume 6 pc. water set - amethyst - pretty set
- \_\_\_ 244. Rococo vase - smoke
- \_\_\_ 245. Rococo vase - marigold
- \_\_\_ 246. Scroll Embossed 9" plate - purple - super pretty
- \_\_\_ 247. Scroll Embossed 9" plate - green
- \_\_\_ 248. Peacock at the Fountain 4 pc. punch set - marigold - inside of bowl has lots of yellow irid., one cup has chip
- \_\_\_ 249. Greek Key ruffled bowl - purple - small chip on base
- \_\_\_ 250. Grape & Cable cologne bottle - marigold - nice
- \_\_\_ 251. Grape & Cable perfume bottle - marigold - scarce, nice
- \_\_\_ 252. Utah Liquor Co. advertising 6" plate - amethyst - scarce plate, nice
- \_\_\_ 253. Miniature Morning Glory 5" vase - smoke
- \_\_\_ 254. Tree Trunk 8" squatty vase - blue - super pretty
- \_\_\_ 255. Imperial Grape 11" ruffled bowl - purple
- \_\_\_ 256. Persian Medallion lg size crimped edge ruffled compote - blue
- \_\_\_ 257. Persian Medallion lg size crimped edge ruffled compote - marigold



SEEK AUCTIONS  
P.O. BOX 377  
MASON CITY, IA 50401

PRESORTED  
FIRST CLASS MAIL  
US POSTAGE  
PAID  
MAIL EXPEDITORS

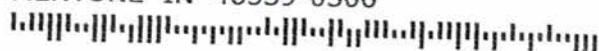


**2018 CARNIVAL  
GLASS AUCTIONS**

ONTARIO, CAL.  
MARCH 10  
DALLAS, TEXAS  
MARCH 24

T3 P1 121  
LEE MARKLEY  
BOX 306

MENTONE IN 46539-0306



- \_\_\_ 258. Grape & Cable 9 pc. punch set - purple - nice
- \_\_\_ 259. Stippled Grape & Cable punch cup - renninger blue - scarce color
- \_\_\_ 260. Nippon ruffled bowl w/BW back - purple - couple of sharp points have been polished
- \_\_\_ 261. N's Eight Sided bushel basket - blue
- \_\_\_ 262. N's Peacock at the Fountain water pitcher w/4 Dugan tumblers - blue
- \_\_\_ 263. Basketweave Open Edge 2 sides up basket - vaseline
- \_\_\_ 264. Peacocks 9" plate w/ribbed back - blue - has electric highlights
- \_\_\_ 265. Peacocks 9" plate w/ribbed back - purple - nice
- \_\_\_ 266. Peacocks 9" plate w/ribbed back - marigold
- \_\_\_ 267. Peacocks 9" plate w/ribbed back - ice green
- \_\_\_ 268. Dragon & Lotus spt ftd IC shaped bowl - green - nice
- \_\_\_ 269. Grape & Cable cologne bottle, no stopper - ice blue
- \_\_\_ 270. Fenton's Grape & Cable fruit bowl w/plain interior - green - nice
- \_\_\_ 271. Concave Flute 9 1/2" vase - teal - neat
- \_\_\_ 272. Concave Flute 9" vase - amethyst
- \_\_\_ 273. Fern Brand Chocolates advertising 2 sides up plate - amethyst - scarce, nice
- \_\_\_ 274. Four Seventy Four 10 pc. punch set - marigold
- \_\_\_ 275. Three Fruits 9" plate w/BW back - purple
- \_\_\_ 276. Flute 9" ruffled bowl - smoke
- \_\_\_ 277. Raspberry milk pitcher - purple - small nick on base
- \_\_\_ 278. Brooklyn Bridge 10 ruffled bowl - marigold - nice
- \_\_\_ 279. Two Flowers lg size ftd ruffled bowl - blue - tiny nick on back of point
- \_\_\_ 280. Heart & Vine ruffled bowl - green - super pretty!
- \_\_\_ 281. Captive Rose 9" plate - blue - silvery
- \_\_\_ 282. Vintage dome ftd deep ruffled bowl - celeste blue - very rare bowl, has great stretchy irid.
- \_\_\_ 283. Four Pillars 9 1/2" vase - aqua opal
- \_\_\_ 284. Greek Key 9" plate w/BW back - purple - small pinpoint on point
- \_\_\_ 285. Oriental Poppy 7 pc. tankard water set - marigold - very nice
- \_\_\_ 286. Strawberry bonbon - lime green opal - scarce, nice
- \_\_\_ 287. M'burg Courthouse ruffled bowl - amethyst - radium, nice, includes a Courthouse postcard
- \_\_\_ 288. Stippled Grape & Cable Variant ruffled bowl w/ribbed back - sapphire - very scarce, nice
- \_\_\_ 289. Stippled Grape & Cable Variant ruffled bowl w/ribbed back - blue - very scarce, nice
- \_\_\_ 290. Nippon PCE bowl w/ribbed back - ice blue
- \_\_\_ 291. Hattie chop plate - green - very scarce
- \_\_\_ 292. Orange Tree powder jar - blue - super pretty example, typical tiny pinpoints on rims
- \_\_\_ 293. Optic & Buttons cup - marigold - has Imperial Cross mark, scarce
- \_\_\_ 294. Imperial Flute cup - marigold - has Imperial Cross mark
- \_\_\_ 295. Dugan Frit 5" tri-cornered vase - amethyst
- \_\_\_ 296. Dugan Frit 4 1/2" whimsy shaped vase - green
- \_\_\_ 297. Dugan Frit 4 1/2" vase - green
- \_\_\_ 298. Poppy pickle dish - blue - nice
- \_\_\_ 299. Grape & Cable breakfast set - purple - nice