



**THE
TARKINGTON
COLLECTION**

International
Carnival Glass Association
Convention Auction

Carnival Glass

2017 Auction

Saturday, July 15

9:30 a.m.

Crowne Plaza
Airport Hotel
St. Louis, Missouri

Public
Invited

Seeck Auctions
Jim & Jan Seeck
641-424-1116



SATURDAY, JULY 15, 2017 — 9:30 A.M.

Jim & Jan Seeck

Crowne Plaza Hotel — St. Louis Airport
11228 Lone Eagle Dr, Bridgeton, MO 63044

641-424-1116

- ★ **ABSENTEE and LIVE BIDDING** is available on-line through Auction Flex at: www.seeckauction.com
- ★ **NO BUYER'S PREMIUM** -- EMAIL: jimjan@seeckauction.com

THE TARKINGTON COLLECTION

The ICGA will be the host of the first Tarkington auction. Carlton and Jane's glass has been divided into three live auctions with the first selling this year at the ICGA convention in St. Louis. Carlton liked nice things, number one, he has a super nice wife and he liked to buy nice Carnival Glass. The result was a fabulous collection of Carnival Glass that was put

together from buying at conventions, auctions and from other collectors. Carlton is definitely being missed in the Carnival Glass community. The Tarkington glass will now go to new homes to be loved and admired. Hope to see you all in St. Louis as a great convention has been planned and it will be an auction that you will not want to miss!

LODGING

Visit the ICGA Website: <http://www.internationalcarnivalglass.com>. If planning to stay at the hotel, reservations can be made by calling (314)291-6700. If you have questions about the convention, contact President Brian Pitman at: 785-274-9105 or email: bpitman@gmail.com or Roger and Cathy Dunham at: 217-370-7954.

Terms: Cash or Check, VISA, MasterCard and Discover accepted w/proper ID. **4% Clerking Fee** on all purchases made using credit cards. Announcements made day of sale take precedence over any printed information.

ABSENTEE BIDDING OPTIONS

- 1) **Call us by phone at:** (641) 424-1116
- 2) **Prebid: Enter your bids from our website into our online catalog through the Auction Flex system.**
 - *An exciting advantage of entering your bids online yourself*, is the option to be notified by email if you are outbid on an item. You will know when you are outbid on an item and you can increase your bid on that item or bid on something else.
- 3) **Live Phone Bidding: Is available on pieces with an estimated sale price of \$500 or more.** If you would like to participate in live phone bidding, contact us by **the Thursday before the auction, July 13.**
- 4) **Real-time Bidding:** Bid live during the auction through Auction Flex live webcast bidding.

There is a \$7 handling charge for each successful bid. Shipping and insurance charges are additional.

Bidders will be notified by phone/email if their bid(s) are successful. This will be done 1 - 3 days after the auction.

BID INCREMENTS:

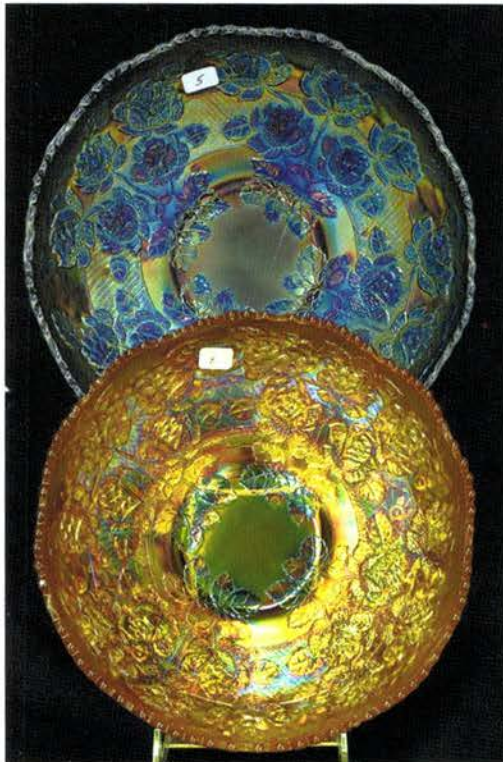
\$1 - \$100/\$5	\$100 - \$200/\$10	\$200 - \$700/\$25	\$700 - \$1,500/\$50
\$1,500 - \$3,000/\$100	\$3,000 - \$5,000/\$250	\$5000+	Auctioneer's Discretion



THE TARKINGTON COLLECTION

CARLTON AND JANE TARKINGTON

- 160 1. Heavy Grape hdd nappy - aqua - super pretty, scarce piece
- 65 2 Stippled Three Fruits bonbon - blue - very pretty
- 190 3. Shell & Sand ruffled bowl - purple - nice
- 110 4. Springtime butter dish - marigold - nice



16,000 5. Rose Tree IC shaped bowl - blue - BEAUTIFUL! Rare in this shape with fantastic irid.

17,000 6. Rose Tree IC shaped bowl - marigold - a beautiful matching pair! Rare again in this shape.

100 7. Stippled Basket of Roses bonbon - purple - very nice

12,000 8. Grape & Cable small size 8 pc punch set - ice blue - maybe the rarest of all the small size punch bowls and this is a great one!



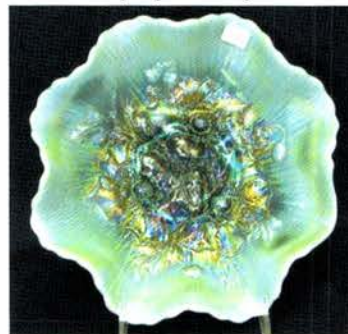
4,500 9. Grape & Cable small size 8 pc punch set - ice green - super pretty irid. and extremely rare, another great punch set

2,100 10. Grape & Cable small size 8 pc punch set - white - frosty w/ super irid., rare, rare



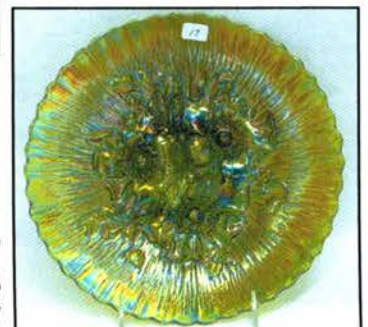
400 11. Grape & Cable small size 6 pc punch set - green - super pretty

325 12. Grape & Cable small size 8 pc punch set - purple - very nice



20,000 13. Poppy Show ruffled bowl - aqua opal - fantastic opal w/beautiful irid., few known, out of the Whitley collection

575 14. Poppy Show 9" plate - ice green - very scarce color



4,500 15. Poppy Show 9" plate - ice blue - very nice

180 16. Poppy Show 9" plate - white - pretty

13,000 17. Poppy Show 9" plate - green - rare color, pretty, a dandy

2700 18. Poppy Show 9" plate - blue - this screams irid. WOW, has small chip on bottom of collar base, I think the irid. is more important on this piece

950 19. Poppy Show 9" plate - purple - pretty highlights

325 20. Poppy Show 9" plate - marigold - dark, pretty

2600 21. Poppy Show 9" plate - marigold - pastel & super!

6250 22.

Blackberry Block tankard water pitcher - amber / vaseline - they have always called this one the only known pitcher in vaseline, but is really amber with pastel irid., it is fantastic and may be one of the best Fenton pitchers out there!



1600 23. Blackberry Block 4 pc. tankard water set - white - very, very rare color, not many chances to buy this one

1100 24. Blackberry Block 7 pc. tankard water set - green - very scarce & pretty

900 25. Blackberry Block 6 pc tankard water set - amethyst - supernice for these, scarce

1450 26. Blackberry Block 7 pc. tankard water set - blue - super pitcher, they don't get much better than this

250 27. Blackberry Block 7 pc. tankard water set - marigold - very nice

9250 28. N's Peacock at Urn master IC bowl - aqua opal - super pretty irid. on this extremely rare bowl, highly desirable, turned up more on bottom edge

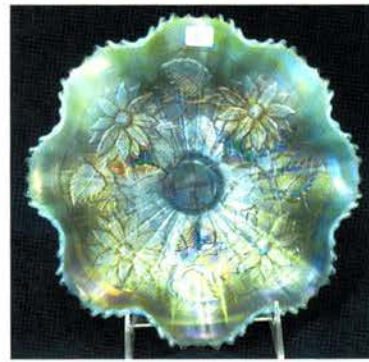


500 29. N's Peacock at Urn IC bowl - ice blue - very pretty



6250 30. Memphis 6 pc. punch set - ice green - a pastel beauty! fantastic irid., extremely rare!!

650 31. Memphis 8 pc. punch set - green - very nice, scarce



5250 32. Poinsettia & Lattice ftd ruffled bowl - aqua opal - an extreme rarity, highly desirable, a dandy

1100 33. Poinsettia & Lattice ftd ruffled bowl - ice blue - super example, a beauty

700 34. Poinsettia & Lattice ftd ruffled bowl - white - extremely rare color, frosty & pretty

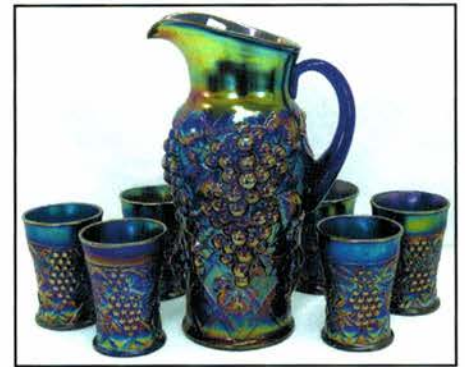
425 35. Poinsettia & Lattice ftd ruffled bowl - horehound - very rare color to find, nice

525 36. Poinsettia & Lattice ftd ruffled bowl - blue - scarce, very pretty

400 37. Poinsettia & Lattice ftd ruffled bowl - purple - nice

250 38. Poinsettia & Lattice ftd ruffled bowl - marigold - dark & nice

6250 39. Grape Arbor 7 pc. tankard water set - blue - electric & nice, extremely rare, another opportunity



575 40. Grape Arbor 7 pc. tankard water set - ice blue - dark, very nice

500 41. Grape Arbor 4 pc. tankard water set - purple - super

pretty
300 42. Grape Arbor 6 pc. tankard water set - white - scarce, nice

150 43. Grape Arbor 7 pc. tankard water set - marigold - dark, pretty

2300 44. Good Luck 9" plate w/ribbed back - ice green - very rare plate & nice, not many around!

2000 45. Good Luck 9" plate w/ribbed back - ice blue - super pretty irid., rare, rare plate, tiny pinpoint on top cleat of horseshoe

3250 46. Good Luck 9" plate w/ribbed back - white - another extremely rare color, super irid.

1500 47. Good Luck 9" plate w/ribbed back - emerald green - fantastic irid., super!



- 395 48. Good Luck 9" plate w/ribbed back - blue - very hard color to find
- 300 49. Good Luck 9" plate w/ribbed back - marigold - dark, nice
- 350 50. Good Luck 9" plate w/ribbed back - pastel marigold - lots of pink & yellow irid., pretty

5250 51. M'burg Multi Fruits & Flowers tulip top 8 pc. punch set - green - fantastic! very pretty irid., and super rare!

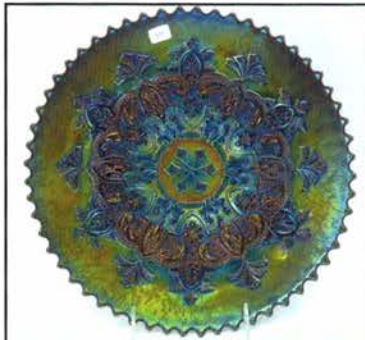


1700 52. M'burg Multi Fruits & Flowers tulip top 8 pc. punch set - amethyst - another extreme rarity, very tiny pinpoint on outside edge of top point.

550 53. Concave Diamonds vase - vaseline - scarce item

5000 54. Garden Path Variant chop plate - purple - WOW! a beauty, has stretch type irid., RARE!

**GARDEN
PATH
VARIANT**
DUGAN



250 55. Daisy & Drape flared out vase - aqua opal - nice, sets just a bit crooked



3000 56. Wisteria 7 pc. tankard water set - white - frosty is the word for this, super rare set w/ beautiful irid.

150 57. Flowers & Frames dome fld ruffled bowl - purple - super pretty



- 5500 58. Tree Trunk 19" funeral vase - white - super pretty irid., very rare, all these vases have great mouths!
- 6500 59. Tree Trunk 18 1/2" funeral vase - green - maybe the prettiest green one I've seen, rare color!
- 3000 60. Tree Trunk 20" funeral vase - blue - super nice example, mouth stands out on this one!
- 2300 61. Tree Trunk 19" funeral vase - purple - mouth is beautiful, super vase!



950 62. Stippled Three Fruits 9" plate w/ribbed back aqua opal - very scarce & nice

425 63. Stippled Three Fruits 9" plate w/ribbed back - horehound - super pretty irid., tiny pinpoint on tip of point

1100 64. Stippled Three Fruits 9" plate w/ribbed back - sapphire - rare color, super nice

- 200 65. Stippled Three Fruits 9" plate w/ribbed back - lavender/horehound / amethyst - buyer gets to call the color, neat plate
- 250 66. Stippled Three Fruits 9" plate w/ribbed back - blue - nice

425 67. Stippled Three Fruits 9" plate w/ribbed back - marigold - fantastic! this qualifies to be called pumpkin

500 68. Stippled Three Fruits 9" plate w/ribbed back - marigold - almost radium type irid., pretty

7000 69. N's Pulled Husk corn vase - purple - a Northwood premier piece, very few available, an outstanding piece!



250 70. Basketweave Open Edge ruffled basket - ice blue - nice



250071. Little Flowers 10" ruffled bowl - red - cherry red color with red irid., great piece

120 72. Wishbone fld 9" plate - marigold - very pretty even irid.

4250 73. Memphis 6 pc. fruit bowl set - ice green - extremely rare set, very highly desirable & pretty

**MEMPHIS
NORTHWOOD**

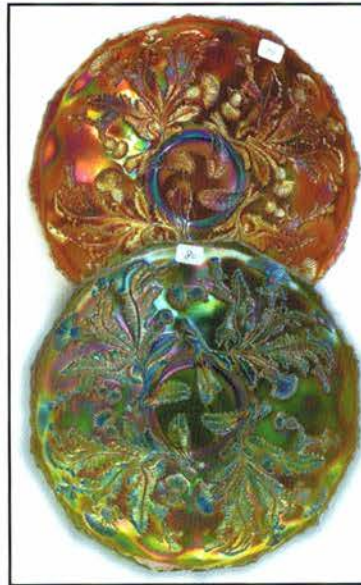


410074. Memphis 8 pc. fruit bowl set - ice blue - dark & super pretty, irid. is great, WOW!

7000 75. Memphis fruit bowl & base - blue - extremely rare color, very few around plus pretty

500 76. Memphis 9 pc. fruit bowl set - purple - pretty set, scarce

525 77. Spector's Department Store / Heart & Vine 9" plate - marigold - super pretty plate, as nice as these get



525 78. Pulled Loop 5 1/2" squatty vase - purple - neat

**THISTLE
FENTON**

1500 79. Thistle 9" plate - amethyst - fantastic irid. on this rare plate, minor nick at seam on base

750080. Thistle 9" plate - green - also a beautiful plate, as nice as they get.

400 81. Norris N. Smith advertising ruffled bowl - amethyst - very nice



45082. Wreathed Cherry 5 pc. water set - white w/red cherries - very rare & nice set, one tumbler has base nick

110 83. Wreathed Cherry water pitcher w/1 tumbler - marigold - dark, nice

5000 84. Farmyard 3 in 1 edge bowl - purple - super scarce & very, very pretty

130 85. Rose Show ruffled bowl - marigold - nice



2700 86. Hearts & Flowers ruffled compote - smoke - extremely rare color for these, maybe one or two known, very pretty, an opportunity to add a new color to your collection



2900 87. Hearts & Flowers ruffled compote - marigold on custard - another extreme rarity, another WOW!



102. Poppy pickle dish - marigold on custard - extremely rare item, nice, not many around

POPPY
NORTHWOOD

103. Poppy Pickle dish - aqua opal - nice opal, very scarce



104. Poppy Pickle dish - ice blue - scarce, pretty

460 88. Hearts & Flowers ruffled compote - renninger blue - yet another rare color, super nice for these

700 89. Hearts & Flowers ruffled compote - green - as pretty as these get

1000 90. Hearts & Flowers ruffled compote - lime green - very pretty irid., scarce color

225 91. Hearts & Flowers ruffled compote - ice blue - scarce, nice

85 92. Hearts & Flowers ruffled compote - white - nice

225 93. Hearts & Flowers ruffled compote - aqua opal - pastel & pretty

250 94. Hearts & Flowers ruffled compote - aqua opal - butterscotch & nice

150 95. Hearts & Flowers ruffled compote - blue - electric & pretty

475 96. Hearts & Flowers ruffled compote - purple - a beauty

160 97. Hearts & Flowers ruffled compote - amethyst - some may call lavender, pretty

100 98. Hearts & Flowers ruffled compote - marigold - nice, what a run!



5750 99. Pacific Coast Mail Order House / Fenton Grape & Cable fruit bowl - blue - very rare advertising item, not many known, very, very nice

3250 100. Pacific Coast Mail Order House / Fenton Grape & Cable - marigold - very rare & pretty, not many known



130 101. Peacock Tail low ruffled PCE bowl - amethyst - definitely a whimsy shape that I can't remember seeing before, pretty



105. Poppy Pickle dish - white - pretty

106. M'burg Elk's paperweight - purple - great mold strike, a really nice one!

107. Dragon & Lotus spt fld IC shaped bowl - peach opal - scarce, chip on one cleat on foot



108. Many Fruits 12 pc. punch set - white - super pretty irid., on this hard to find color

109. Many Fruits 8 pc. punch set - purple - super pretty, another nice one



110. Many Fruits 8 pc. round shape punch set - marigold - nice



111. NUART Homestead chop plate - blue - fantastic example! great mold work, as good as these get!

3750 112. NUART Homestead chop plate - green - fantastic irid., this is incredible, another great mold strike

3000 113. NUART Homestead chop plate - amber - absolute beauty, rare

1500 114. NUART Homestead chop plate - smoke - fantastic irid., another beauty!

3009 115. Exchange Bank advertising round bowl - amethyst - very pretty, very scarce

700 116. Heavy Iris tankard water pitcher w/ straight up top - white - very rare & pretty, rare in this shape

90 117. Leaf & Beads nut bowl - aqua opal - butterscotch - two feet have heat checks



**WISHBONE
NORTHWOOD**

2200 118. Wishbone chop plate - marigold - dark and fantastic, an outstanding piece

800 119. Border Plants dome ftd handgrip plate - purple - fantastic irid.



**BERNHEIMER
MILLERSBURG**

2300 120. M'burg Bernheimer Brothers. ruffled bowl - blue - rare & highly desirable

1050 121. Orange Tree ftd tumbler - ice green - super rare with super irid., couple feet have chips

325 122. Rustic 19 1/2" funeral vase - marigold - very nice

575 123. Embroidered Mums ruffled bowl w/ribbed back - aqua opal - nice opal & rare, light on irid.

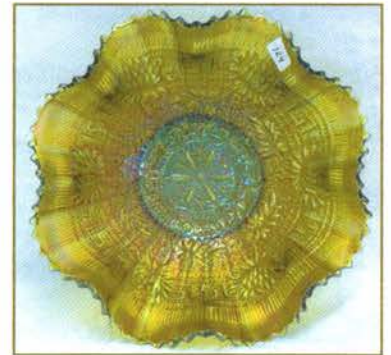
575 124. Embroidered Mums ruffled bowl w/ribbed back - aqua - super pretty irid., scarce color

225 125. Embroidered Mums ruffled bowl w/ribbed back - ice green - light on irid.

275 126. Embroidered Mums ruffled bowl w/ribbed back - ice blue - scarce, nice

275 127. Embroidered Mums ruffled bowl w/ribbed back - lavender - very pretty, scarce color

300 128. Embroidered Mums ruffled bowl w/ribbed back - blue - electric highlights



180 129. Embroidered Mums ruffled bowl w/ribbed back - marigold - very pretty

1500 130. Peacock at the Fountain 6 pc. water set - ice blue - super pretty & rare set



2100 131. Peacock at the Fountain 7 pc. water set - green - super matching set, rare color



1200 132. Peacock at the Fountain 7 pc. water set - white w/gold trim - gold is in excellent shape, super irid.



850 133. Peacock at the Fountain 7 pc. water set - blue - very pretty set!

275 134. Peacock at the Fountain 7 pc. water set - marigold - dark & very nice, another great run

650 135. Eagle Furniture Co. advertising double handgrip plate amethyst - scarce, very nice



HOLLY FENTON



475 136. Holly ruffled bowl - blue opal - very pretty with opal around edge, polishing along edge

500 137. Holly ruffled bowl - marigold on moonstone - super pretty, very rare bowl

400 138. Holly ruffled bowl - red - cherry red, tiny pinpoint on edge

1350 139. Double Stemmed Rose dome ftd ruffled bowl - celeste blue - stretchy irid. & pretty

200 140. Grape & Cable humidor - purple - scarce, nice

170 141. Grape & Cable humidor - marigold - very nice

PEACOCKS NORTHWOOD



950 142. Peacocks 9" plate w/ribbed back - emerald green - very pretty plate, highly desirable, slightly misshaped

675 143. Peacocks 9" plate w/ribbed back - ice blue - super pretty irid. on this rare plate

300 144. Peacocks 9" plate w/ribbed back - lime green - scarce, nice

170 145. Peacocks 9" plate w/ribbed back - ice green - nice

140 146. Peacocks 9" plate w/ribbed back - white - very pretty irid.

350 147. Peacocks 9" plate w/ribbed back - blue - has electric highlights

1300 148. Peacocks 9" plate w/ribbed back - purple - fantastic!

225 149. Peacocks 9" plate w/ribbed back - lavender - pretty, scarce color

450 150. Peacocks 9" plate w/ribbed back - marigold - very pretty



950 151. Enameled Forget Me Not 5 pc. tankard water set - green - very scarce set, nice

475 152. Enameled Forget Me Not 3 pc. tankard water set - blue - very scarce

450 153. M'burg Courthouse ruffled bowl - amethyst - radium, nice!

GRAPE&CABLE

2600 154. Grape & Cable hatpin holder - ice green - rare color & highly desirable

600 155. Grape & Cable hatpin holder - ice blue - very pretty irid. & dark, very small chip on bottom of one foot

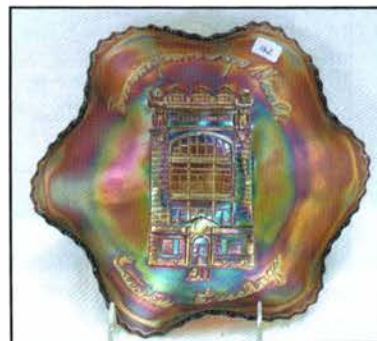
250 156. Grape & Cable hatpin holder - marigold w/painted grapes and leaves - very unique, a neat piece

525 157. Grape & Cable hatpin holder - lavender - super pretty, scarce color

150 158. Grape & Cable hatpin holder - green - definitely towards the emerald side, epoxy on one foot

150 159. Grape & Cable hatpin holder - marigold - super pretty example

900 160. Persian Garden ruffled fruit bowl - purple - highly desirable & very nice

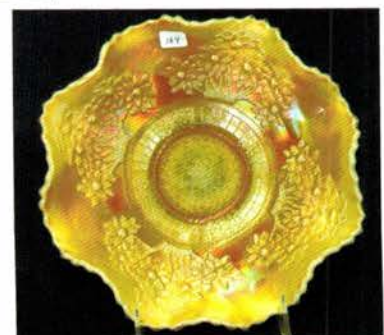


450 161. Persian Garden ruffled fruit bowl - marigold - pretty

1050 162. 1911 Birmingham Age Herald ruffled bowl - amethyst - very pretty example, rare advertising piece

90 163. Horse Medallion ftd nut bowl - red slag - scarce bowl, large chip on back edge

650 164. Orange Tree ruffled bowl - marigold on moonstone - rare bowl & pretty



- 900 165. Orange Tree ruffled bowl - red - very rare & very nice for these
- 325 166. Orange Tree ruffled bowl - reverse amberina - dark red base, amber edge, neat bowl
- 130 167. Orange Tree w/trunk ruffled bowl - green - super pretty
- 200 168. Diamond Points 10" vase - ice blue - nice irid., scarce
- 160 169. Diamond Points 9 1/2" vase - renninger blue - rare color, nice
- 450 170. M'burg Fleur de Lis crimped edge ruffled bowl- green-radium & nice, unusual shape w/crimped edge
- 750 171. Greek Key 7 pc. tankard water set - green - beautiful set, rare

1050 172. Hearts & Flowers PCE bowl w/ribbed back - lime green - rare color w/pretty irid.

**HEARTS&FLOWERS
NORTHWOOD**



- 300 173. Hearts & Flowers PCE bowl w/ribbed back - ice blue - very pretty, scarce
- 225 174. Hearts & Flowers PCE bowl w/ribbed back - white - pretty irid.
- 475 175. Hearts & Flowers PCE bowl w/ribbed back - green - super nice for green, a dandy!
- 225 176. Hearts & Flowers PCE bowl w/ribbed back - purple - super nice



- 250 177. Hearts & Flowers PCE bowl w/ribbed back - marigold - nice
- 400 178. Ogden Furniture advertising handgrip plate - amethyst - pretty irid., scarce
- 500 179. Dragon & Lotus ruffled bowl - red - very pretty

525 180. Grape & Cable master berry bowl - ice green - very rare color, pretty

325 181. Grape & Cable master berry bowl - green - fantastic

85 182. Leaf Chain 7" ruffled bowl - ice green - rare color, tiny sliver off point & two tiny spots of epoxy on points



- 615 183. Leaf Chain 7" ruffled bowl - red - scarce
- 400 184. M'burg Strawberry Wreath 10" IC shaped bowl - green - radium, rare & nice
- 1500 185. Stippled Good Luck 9" plate w/ribbed back - blue slag - pretty irid. with pronounced slag through the base

- 400 186. Stippled Good Luck 9" plate w/ribbed back - purple - super example for these
- 525 187. Stippled Good Luck 9" plate w/ribbed back - renninger blue - very nice, scarce



725 188. Stippled Good Luck 9" plate w/ribbed back - pastel marigold - covered with yellow irid., beautiful

475 189. Stippled Good Luck 9" plate w/ribbed back - marigold - dark, nice

190 190. Imperial Grape water carafe - purple - super

800 191. Enameled Windflower tankard water pitcher - marigold - scarce

- 110 192. Grape & Cable master IC bowl - purple - nice
- 50 193. Grape & Cable master IC bowl - marigold - pretty
- 300 194. Oriental Poppy tankard water pitcher - purple - nice example

**ROSE SHOW
NORTHWOOD**

425 195. Rose Show 9" plate - amethyst - very pretty, hard to find this nice in amethyst

325 196. Rose Show 9" plate - marigold - dark, nice

525 197. Rose Show 9" plate - pastel marigold - lots of pink & yellow, super

110 198. Rose Show deep 9" plate - white - small nick on rose



plate - pastel



1250 199. Grape & Cable 15 pc. master punch set - purple - always in demand, nice

1900 200. Grape & Cable 14 pc. master punch set - marigold - very pretty set, dark, nice

200 201. Acanthus chop plate - smoke - pretty

90 202. Acanthus chop plate - marigold - nice

1150 203. 1914 Parkersburg Elks 7" plate - blue - very scarce & highly desirable, nice!

**ELKS
FENTON**



1050 211. M'burg Seaweed 9" IC shaped bowl - green - satin, very nice, hard to find in the 9" size

70 204. Stippled Grape & Cable Variant ruffled bowl w/ribbed back - marigold - pretty

275 205. Luster Rose ftd ruffled bowl - red - very rare bowl, couple of roses missing irid.

675 206. Poppy Show vase - marigold - towards the pastel side, very nice



1600 207. Panther ftd centerpiece bowl - blue - very pretty & very rare bowl, not often sold

85 208. Peacocks ruffled bowl w/ribbed back - aqua opal - chip on edge

325 209. Springtime 7 pc. water set - marigold - dark & pretty set



500 210. Gevurtz Bros. 6" advertising plate - amethyst - very scarce

90 212. Blossomtime ruffled compote - green - scarce, nice

100 213. Blossomtime ruffled compote - purple - super pretty

80 214. Blossomtime ruffled compote - marigold - dark, nice

375 215. Grape & Cable turned in centerpiece bowl - lime green - rare color w/ nice irid., great piece



200 216. Grape & Cable turned in centerpiece bowl - white - very pretty, scarce

250 217. Grape & Cable turned in centerpiece bowl - lavender - super irid., unique look

120 218. Grape & Cable turned in centerpiece bowl - marigold - dark, nice

170 219. M'burg Hanging Cherries 10" IC shaped bowl - aqua - rare color, satin, bruise in base

675 220. Bouquet 7 pc. water set - blue - fantastic irid., beautiful set



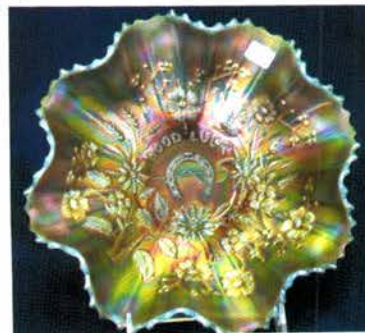
500 221. M'burg Peacock crimped edge deep round bowl - green - radium, super, unusual shape

**PEACOCK
MILLERSBURG**

1200 222. Good Luck ruffled bowl w/ribbed back - aqua opal - butterscotch, nice

1100 223. Good Luck ruffled bowl w/ribbed back - sapphire - scarce, nice

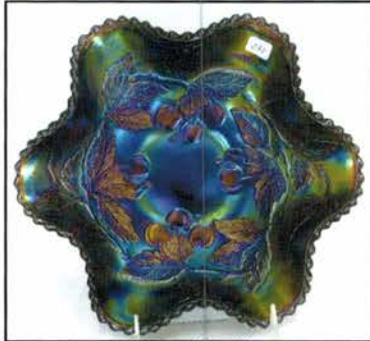
600 224. Dragon & Lotus IC shaped bowl - red - very nice, scarce



- 300 225. Hearts & Flowers ruffled bowl w/ribbed back - ice green - pretty irid.
150 226. Drapery rose bowl - ice blue - scarce color for these
130 227. Drapery rose bowl - aqua opal - nice
150 228. Drapery rose bowl - marigold - dark, nice
110 229. M'burg Strawberry tri-cornered crimped edge 10" bowl - amethyst - radium, has chip on back edge
65 230. Field Flower 6 pc. water set - marigold

160 231. Dugan Cherries lg size ruffled bowl - purple - super pretty

CHERRIES DUGAN



- 250 232. Big Basketweave 10 1/2" vase - ice blue - scarce color
190 233. Windmill milk pitcher - purple - scarce item, nice
425 234. Fenton's Peacock at Urn 9" plate - blue - super pretty, scarce
180 235. Fenton's Peacock at Urn 9" plate - marigold - very nice
150 236. Fenton's Peacock at Urn 9" plate - white - very pretty irid.
425 237. Australian Kingfisher lg size ruffled bowl - dark
275 238. Grape & Cable 7 pc. water set - purple - pitcher is fantastic!



45 239. Grape & Cable 7 pc. water set - marigold - very nice, one tumbler has nick

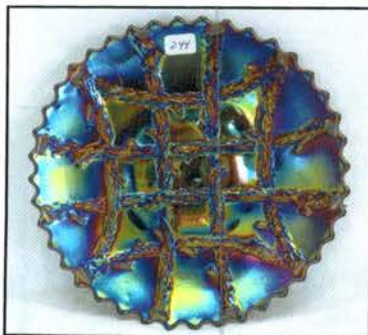
525 240. Captive Rose 9" plate - green - super pretty, scarce

375 241. Captive Rose 9" plate - amethyst - pretty example, scarce color

- 375 242. Captive Rose 9" plate - blue - very pretty
130 243. Captive Rose 9" plate - marigold - nice

GRAPEVINE LATTICE DUGAN

300 244. Grapevine Lattice 7" plate - purple - pretty



650 245. Grapevine Lattice 6 pc. tankard water set - white - rare set, pretty irid.

- 450 246. Open Rose 9" plate - purple - pretty, slightly out of shape
950 247. Tree Trunk 6 1/2" squatty vase - ice green - scarce, very nice
248. Peacocks PCE bowl w/ribbed back - green - pretty
425 249. Wreath of Roses ruffled punch bowl & base - blue - scarce color, pretty
350 250. Wreath of Roses 5 pc. round punch set - green - scarce, nice
500 251. M'burg Peacock at Urn master IC shaped bowl - amethyst - radium & nice, hard to find in radium
475 252. Peacock & Grape 3 in 1 edge bowl - lime green opal - scarce, nice
110 253. Peacock & Grape 3 in 1 edge bowl - green - pretty



575 254. Imperial Grape 9" plate - purple - super pretty plate, hard to find

350 255. Imperial Grape 9" plate - amber - scarce color

600 256. Stippled & Banded Grape & Cable orange bowl - blue - rare bowl, nice



- 168 257. Stippled Good Luck ruffled bowl w/ribbed back - blue - very petty
- 500 258. Stippled Good Luck ruffled bowl w/ribbed back - pastel marigold - lots of pink & yellow irid., a dandy
- 750 259. M'burg Marilyn water pitcher w/1 tumbler - green - scarce pitcher, polished spot on bottom of tumbler



GRAPE LEAVES NORTHWOOD

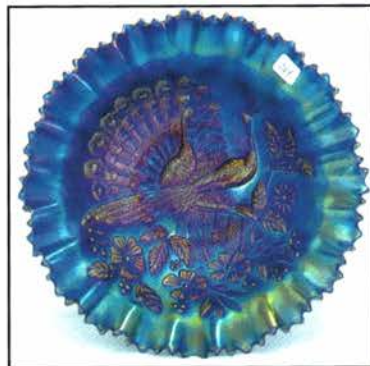
- 475 260. N's Grape Leaves ruffled bowl - ice blue - scarce bowl, has pretty color & irid.

- 1050 261. N's Grape Leaves ruffled bowl - white - very rare color, pretty irid.



- 400 262. Fashion tumbler - purple - super pretty

- 190 263. Peacock & Grape 9" plate - marigold - very pretty plate



- 275 264. Stippled Peacocks PCE bowl w/ribbed back - blue - electric

- 90 265. Stippled Peacocks PCE bowl w/ribbed back - marigold - nice

- 325 266. M'burg Trout & Fly 3 in 1 edge bowl - amethyst - satin - nice

- 110 267. Zippered Loop kerosene lamp - marigold - marked IG, has old Daisy Chain gas shade

- 375 268. Fern Brand Chocolate advertising 6" plate - amethyst - scarce, pretty

- 1200 269. N's Thin Rib 11" vase - ice green - nice

- 575 270. Lotus & Grape IC shaped bowl - Persian Blue - very pretty for these, nice even irid., rare



- 375 271. Dragon & Strawberry ftd ruffled bowl - marigold - scarce, nice

- 120 272. Four Flowers Variant ruffled bowl - ice green - pretty, scarce



- 1700 273. Hattie chop plate - amber - super pretty, rare plate!

- 375 274. S Repeat tumbler - marigold - very scarce ✓

- 160 275. M'burg Diamonds water pitcher - green - scarce, nice

- 650 276. Vintage 10" IC shaped bowl - red - extremely rare & desirable

- 400 277. Grape & Cable hdd pin dish - ice blue - scarce item, nice

- 900 278. Apple Blossom Twigs 3 in 1 edge bowl - purple - super pretty

- 100 279. Three Fruits dome ftd ruffled bowl - lime green - scarce color



SINGING BIRDS NORTHWOOD

- 450 280. Singing Birds mug - aqua opal - great opal, pastel & prett

- 475 281. Singing Birds mug - horehound - rare mug, nice

- 325 282. Singing Birds mug - ice blue - very pretty

- 625 283. Rosalind Variant ruffled compote - purple - super pretty, very scarce

- 300 284. Orange Tree standard size mug - red - nice example



2 25285. Persian
Medallion chop plate -
blue - scarce

90 286. Raspberry
milk pitcher - ice
blue - scarce pitcher,
highly desirable &
pretty



296. Peacock at the
Fountain ruffled compote -
blue - scarce, nice

**PEACOCK/
FOUNTAIN**
NORTHWOOD



- 287. Peacock & Grape ruffled bowl - red -
very pretty, scarce
- 288. Dugan Cherries crimped edge 6" plate - purple - nice
- 289. Petal & Fan 11" IC bowl - peach opal - very
rare shape for these
- 290. 1910 Detroit Elks ruffled bowl - blue - scarce

- 297. Peacock at the Fountain ruffled compote -
marigold - scarce
- 298. Tree Trunk 10 1/2" vase - ice green - nice
- 299. Dreibus Parfait Sweets handgrip advertising plate -
amethyst - scarce & desirable
- 300. Apple Blossom Twigs banana boat shaped dish -
peach opal - nice
- 301. Beaded Cable rose bowl - aqua opal - nice,
tiny chip on foot



NIPPON
NORTHWOOD

302. Nippon 9" plate
w/BW back - green - scarce
& very pretty

291. N's Thin Rib
midsize 13 1/2" vase -
vaseline - very hard to find
vase & a beauty

292. N's Thin Rib
midsize 13" vase - lime
green - pretty

293. N's Thin Rib
midsize 12 1/2" vase - ice
green - scarce, nice



- 294. N's Thin Rib midsize 13 1/2" vase - blue - pretty
- 295. Butterfly & Fern water pitcher & 1 tumbler -
marigold - nice

303. Brooklyn Bridge 6 ruffled bowl - marigold

**BUTTERFLY
& BERRY**
FENTON

304. Butterfly &
Berry hatpin holder - blue
- super! this is a dandy,
quite rare

305. Eagle Furniture
Co. 6" advertising plate -
amethyst - quite scarce

306. Peacock lamp
- red - scarce & highly
desirable, pretty

307. Stippled Grape &
Cable 9" plate w/BW back -
green - super pretty, scarce





___ 308. Superb Drape vase - aqua opal - one of just a handful known in any color, a great opportunity, beautiful vase!

___ 309. Double Scroll candlesticks - red - scarce, nice

___ 310. Waterlily ftd IC shaped master berry bowl - blue - fantastic, best I've seen

WATERLILY
FENTON



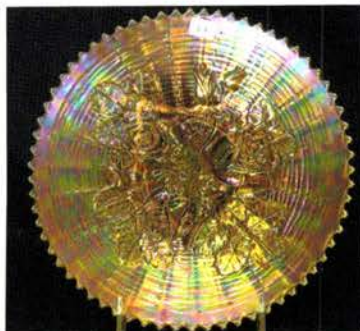
___ 311. Waterlily ftd ruffled saucer - red - pretty



___ 312. Orange Tree Scroll 3 pc. tankard water set - blue - pitcher is fantastic, rare & nice

___ 313. Rose Show Variant 9" plate - marigold - lots of pink irid., a beautiful plate!

___ 314. Davidson's Society Chocolates advertising double handgrip plate - amethyst - very pretty



___ 315. Loganberry vase - smoke - very rare color & not many around, super pretty, the start to a great run of Loganberries!

LOGANBERRY
IMPERIAL



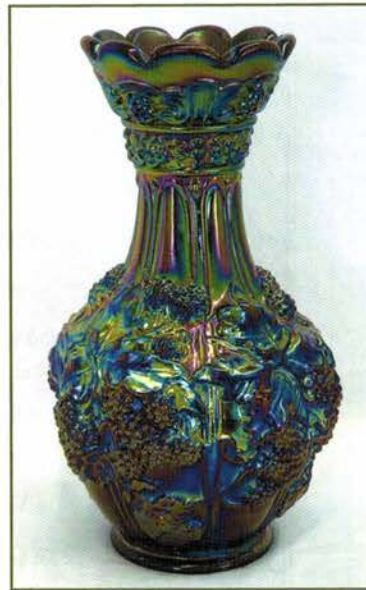
___ 316. Loganberry vase - purple - absolutely super!

___ 317. Loganberry vase - amber - one of the nicer ones around!

___ 318. Loganberry vase - green - very pretty irid., most don't

___ 319. Loganberry vase - marigold - dark & super

___ 320. Loganberry vase - pastel marigold or clambroth - super irid., slightly whimsical top



THE
TARKINGTON
COLLECTION

Part II live auction scheduled for:
April 2018

Part III live auction:
To be announced

Thank you for your interest.

Lots featured
inside catalog.



**2017 CARNIVAL
GLASS AUCTION**

SAT., JULY 15 9:30 A.M.

CROWNE PLAZA AIRPORT HOTEL
ST. LOUIS, MISSOURI

**THE
TARKINGTON
COLLECTION**

SEECK AUCTIONS

JIM & JAN SEECK

MASON CITY, IA 50401

WWW.SEECKAUCTION.COM

Lots listed inside,
including, from left
to right: (Below)
165, 178, 234, 258,
278

At left:
287, 299, 305



21,
34,
64,
67,
101

18

26

Lots 315 - 320

119