

Lincoln Land
Carnival Glass Club
Convention



292.

Open
to
the
Public



41.

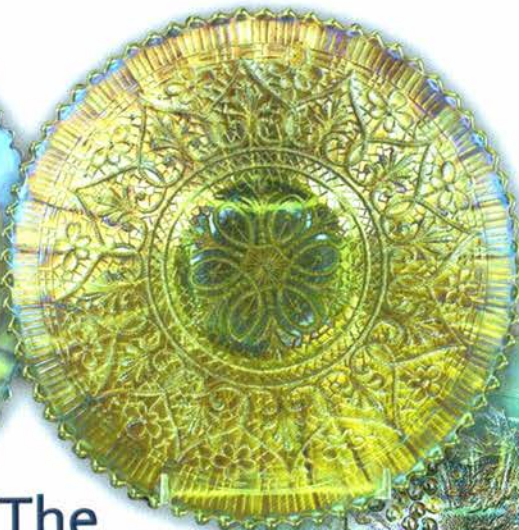
15.

Carnival Glass ***2017 Auction*** Saturday, June 3 9:30 a.m. Milwaukee, Wisconsin

10.



35.



33.

The
Jim Kimbro
Collection



21.

Seeck Auctions
Jim & Jan Seeck
641-424-1116



SATURDAY, June 3, 2017 — 9:30 A.M.

Jim & Jan Seeck

Best Western Milwaukee Airport Hotel 5105 So. Howell Ave. 53207 Milwaukee, Wisconsin

641-424-1116

★ Open to the Public **Preview:** Friday Evening
Online absentee bidding closes, Friday, June 2 at 9 pm CST

ABSENTEE BIDDING is available on-line through Auction Flex using our online catalog at www.seeckauction.com

★ **NO BUYER'S PREMIUM -- EMAIL: jimjan@seeckauction.com**

We are very pleased to bring the **Jim Kimbro collection** of Carnival Glass to Milwaukee this year for auction. Jim is from Texas and has collected for over 50 years. His collection is overflowing with beauty! Northwood tended to

be his favorite maker with an added attraction to pastels. Very little damage and the words "nice" and "pretty" are used in descriptions A LOT - that is a very good thing!

Lodging

Lincoln Land Club Convention info: Contact President Jack Targonski at jackt3@rcn.com

If staying at the Best Western Hotel, for reservations please call: (414)769-2100

Terms: Cash or Check, VISA, MasterCard and Discover accepted w/proper ID. 4% Clerking Fee on all purchases made using credit cards. Announcements made day of sale take precedence over any printed information.

We have 3 options for ABSENTEE BIDDING for our live auctions:

- 1) **WRITTEN OR PHONE:** If you **DO NOT** have internet access or access to our website, you can: Call us by phone to enter your bids at (641) 424-1116 **OR** By sending the numbers of the item(s) desired and the amount bid on each to: Seeck Auctions, PO Box 377, Mason City, Iowa 50402. (The mail has not been very dependable. We would prefer you call us with your bids rather than send them in a letter.)
 - All written and called in bids will be entered into the online catalog by us.
 - **Written and Phone Absentee Deadline:** Have all bids in by **Wednesday, May 31.**
- 2) **ONLINE CATALOG:** Enter your bids from our website into our online catalog through the Auction Flex system. When you get to the online catalog, you will need to login as a bidder. For the first time you will need to **set up your account** by creating a user name and password. This will include filling out a form with your name, address, etc. You will also need to **register for the auction** which will ask you to enter a valid credit card number. This card will be validated by a \$1 charge to your card. This will only happen once and you will now be able to enter bids through our online catalog by just logging in with your user name and password. You will use this user name and password for all our auctions. You are not required to pay by credit card if you are successful. This is just a safeguard for us if someone does not pay. We will let you know what you owe us through an email and you can decide how you would like to pay us.
 - *An exciting advantage of entering your bids online yourself,* is the option to be notified by email if you are outbid on an item. You will know when you are outbid on an item and you can increase your bid on that item or bid on something else. **There will be a cutoff date and time for entering your bids online, generally at 9 p.m. the night before each live auction.** After this time has passed, you will not be able to enter your bids from our online catalog.
 - *Remember,* that just because you are the high bidder in the online catalog, this does not mean you have won the item. Your bid will still need to beat the floor bidders and live phone bidders. This system will run our absentee bids just as we did before. You will still be able to buy the item lower than your online bid unless someone on the floor bids you higher.
- 3) **LIVE PHONE BIDDING:** Available on pieces with an estimated sale price of \$500 or more. If you would like to participate in live phone bidding, contact us by **the Thursday before the auction, June 1.** We will need to know the lot# and the phone number that you can be reached at on the day of the auction. We will also need your home phone number if different than the above number. Please call with questions: 641-424-1116.
 - **There is a \$7 handling charge for each successful bid. Shipping and insurance charges are additional.** bidders will be notified by phone/email if their bid(s) are successful. This will be done 1 - 3 days after the auction.
 - **If you do not receive an item that sold for less than your bid, assume we cancelled your bid because the item had a severe manufacture problem, damage or was not listed correctly.**

BID INCREMENTS: \$1 - \$100/\$5	\$100 - \$200/\$10	\$200 - \$700/\$25	\$700 - \$1,500/\$50
\$1,500 - \$3,000/\$100	\$3,000 - \$5,000/\$250	\$5000+ Auctioneer's Discretion	

- ___ 1. Grape & Cable breakfast set - purple - nice
- ___ 2. Butterfly & Berry 7 1/2" vase - marigold - nice
- ___ **3. Ragged Robin CRE bowl - blue - scarce pattern, especially in this shape**
- ___ 4. Persian Medallion rose bowl - white - nice
- ___ 5. Estate cream & sugar - peach opal - light opal on top edge, cute set
- ___ 6. Ripple 4 1/2" miniature vase - marigold - 2 1/2" base
- ___ 7. Miniature Morning Glory 6 1/2" vase - smoke
- ___ 8. Miniature Morning Glory 7 1/2" vase - purple
- ___ 9. Miniature Morning Glory 7 1/2" vase - marigold
- ___ **10. Stippled Three Fruits 9" plate w/ribbed back- ice blue - extremely rare plate & nice, very slight rubbing on fruit, super great plate!**
- ___ **11. Stippled Three Fruits 9" plate w/ribbed back - aqua opal - pastel with super opal, beautiful!**
- ___ **12. Stippled Three Fruits 9" plate w/ribbed back- blue - super example, may be the best one we've ever sold**
- ___ 13. Stippled Three Fruits 9" plate w/ribbed back - amethyst - another nice one
- ___ 14. Stippled Three Fruits 9" plate w/ribbed back - marigold - nice
- ___ **15. Peacock at the Fountain water pitcher - ice blue - great color w/pretty irid., highly desired**
- ___ 16. Peacock at the Fountain tumbler - ice blue - nice
- ___ **17. Peacock at the Fountain 5 pc. water set - white- pretty irid., scarce, nice**
- ___ **18. Peacock at the Fountain 5 pc. water set - purple - nice**
- ___ 19. Peacock at the Fountain water pitcher & 1 tumbler - marigold
- ___ **20. 1910 Detroit Elks ruffled bowl - amethyst - very pretty bowl, very scarce**
- ___ **21. Stippled Grape & Cable PCE bowl w/ribbed back - aqua opal - pastel & super! great opal, another dandy!**
- ___ **22. Stippled Grape & Cable PCE bowl w/ribbed back - ice blue - very pretty irid., very scarce**
- ___ **23. Stippled Grape & Cable Variant PCE bowl w/ ribbed back - blue - very pretty irid., many would call electric**
- ___ **24. N's Footed Fine Rib JIP 6" vase - green - super pretty irid., these are neat**
- ___ **25. N's Footed Fine Rib JIP 6 1/2" vase - marigold- a great one**
- ___ **26. Good Luck ruffled bowl w/ribbed back - aqua opal - very scarce & nice**
- ___ **27. Good Luck ruffled bowl w/ribbed back - ice blue - super pretty irid., great color, rare**
- ___ 28. Good Luck ruffled bowl w/ribbed back - blue - scarce
- ___ 29. Good Luck ruffled bowl w/BW back - green - nice
- ___ **30. Grape & Cable cracker jar - white - very scarce & nice, tiny nick on inner rim of base**
- ___ 31. Grape & Cable cracker jar - purple - super
- ___ 32. Grape & Cable cracker jar - marigold - slight rubs on outer edge of base
- ___ **33. Farmyard 6 ruffled bowl - purple - a collector's favorite, a very nice one!**
- ___ 34. Chesterfield 9" candlesticks - white - scarce color
- ___ **35. Hearts & Flowers 9" plate w/ribbed back - lime green - very rare plate & pretty**
- ___ **36. Hearts & Flowers 9" plate w/ribbed back - ice blue - scarce**
- ___ **37. Hearts & Flowers 9" plate w/ribbed back - white - very pretty irid., quite rare**
- ___ **38. Hearts & Flowers 9" plate w/ribbed back - purple - scarce, nice example**
- ___ **39. Hearts & Flowers 9" plate w/ribbed back - marigold - dark, pretty**
- ___ 40. N's Thin Rib JIP 8" vase - purple
- ___ **41. M'burg Hanging Cherries milk pitcher- green - super pretty satin irid., rare & nice!**
- ___ 42. Grape & Cable covered compote - purple - tiniest pinpoint on top rim of lid
- ___ **43. Rose Show 9" plate - emerald green - pretty irid. on this rare plate, manufacture rough spot by seam of base**
- ___ **44. Rose Show 9" plate - ice blue - very pretty irid., scarce**
- ___ 45. Rose Show 9" plate - white - very nice!
- ___ **46. Rose Show 9" plate - blue - super pretty with electric highlights**
- ___ **47. Rose Show 9" plate - marigold - dark, nice**
- ___ **48. Peacock at the Fountain cvd sugar bowl - ice blue - very rare if you need it**
- ___ **49. Illinois Soldiers & Sailors 7" plate - blue - very pretty example, scarce**
- ___ **50. Illinois Soldiers & Sailors 7" plate - marigold - also a very pretty one, dark**
- ___ 51. Fenton guest set - ice green w/cobalt handle - nice
- ___ **52. Peacock at the Fountain punch bowl & base - blue - rare color & highly desirable**
- ___ **53. Peacock at the Fountain 8 pc. punch set - marigold - very nice**
- ___ 54. N's Corn vase w/stalk base - ice green - has pretty irid.
- ___ **55. Raspberry 6 pc. water set - ice blue - rare set & very pretty**
- ___ 56. Grape & Cable giant ruffled compote - purple - nice for these
- ___ **57. Poinsettia & Lattice ftd ruffled bowl - ice blue- very scarce & pretty**
- ___ **58. Poinsettia & Lattice ftd ruffled bowl - horehound - rare color & super nice, neat bowl!**

- ___ 59. Poinsettia & Lattice ftd ruffled bowl - purple - nice example
- ___ 60. Grape & Cable sugar bowl base - ice green - scarce color to find any of these pieces
- ___ **61. Grape & Cable cvd sugar bowl - green - has electric irid., as nice as these get, many would call emerald**
- ___ **62. Poppy Show ruffled bowl - green - rare color w/very nice irid.**
- ___ **63. Poppy Show ruffled bowl - blue - scarce color**
- ___ **64. Poppy Show ruffled bowl - ice blue - scarce color**
- ___ 65. Horse Medallion 7" plate - marigold - nice
- ___ **66. N's Town Pump - marigold - very rare item & nice**
- ___ **67. N's Town Pump - purple - everyone needs a Town Pump!**
- ___ **68. Grape & Cable spooner - ice green - very rare piece, ice greens are impossible**
- ___ 69. Grape & Cable spooner - green - very pretty
- ___ 70. Grape & Cable spooner - purple - pretty
- ___ 71. Grape & Cable spooner - amethyst
- ___ **72. Embroidered Mums ruffled bowl w/ribbed back - aqua opal - nice opal, super rare bowl**
- ___ 73. Embroidered Mums ruffled bowl w/ribbed back - blue - very pretty
- ___ 74. Embroidered Mums ruffled bowl w/ribbed back - purple - scarce
- ___ **75. Singing Birds 7 pc. water set - green - very nice set, scarce**
- ___ **76. Singing Birds water pitcher - purple - super pretty for these**
- ___ 77. Singing Birds water pitcher - marigold - nice
- ___ **78. N's Peacock at Urn IC sauce - aqua opal - super pretty butterscotch irid., this is a great example of a rare piece! from the Morgan Collection**
- ___ 79. N's Peacock at Urn IC sauce - ice green
- ___ 80. N's Peacock at Urn IC sauce - ice blue - very nice
- ___ 81. N's Peacock at Urn IC sauce - white
- ___ 82. N's Peacock at Urn IC sauce - blue - electric
- ___ 83. N's Peacock at Urn IC sauce - purple - nice
- ___ 84. N's Peacock at Urn IC sauce - marigold - very pretty, quite deep, almost whimsied
- ___ **85. N's Peacock at Urn master IC bowl - ice green - scarce**
- ___ **86. N's Peacock at Urn master IC bowl - ice blue - super pretty irid.**
- ___ 87. N's Peacock at Urn master IC bowl - white - nice
- ___ 88. N's Peacock at Urn master IC bowl - blue - scarce color
- ___ 89. N's Peacock at Urn 5 pc. IC set - purple
- ___ **90. Springtime 7 pc. water set - marigold - nice**
- ___ 91. M'burg Hanging Cherries tumbler - green - radium, nice
- ___ **92. Peacocks 9" plate w/ribbed back - ice blue - pretty irid.**
- ___ 93. Peacocks 9" plate w/ribbed back - ice green - pretty irid.
- ___ 94. Peacocks 9" plate w/ribbed back - blue - highly desirable
- ___ 95. Peacocks 9" plate w/ribbed back - purple - small 3/4" scratch on face
- ___ 96. Peacocks 9" plate w/ribbed back - marigold - nice
- ___ **97. Jockey Club advertising handgrip plate - purple - very pretty irid. for these, rare**
- ___ **98. Regal Cane 8" tankard pitcher - marigold - nice**
- ___ 99. Regal Cane tumbler - marigold
- ___ **100. N's Eight Sided bushel basket - ice blue**
- ___ 101. N's Eight Sided bushel basket - white
- ___ 102. N's Eight Sided bushel basket - purple
- ___ 103. N's Eight Sided bushel basket - marigold
- ___ **104. Grape & Cable 14 pc. master punch set - purple - a collector's classic, very nice, open bubble on top of base but iridized over**
- ___ **105. Grape & Cable master punch bowl & base - marigold - scarce & very nice**
- ___ **106. Grape & Cable midsize 8 pc. punch set - purple - scarce, nice**
- ___ 107. Grape & Cable small size punch bowl & base - purple - nice
- ___ **108. Grape & Cable round small size 8 pc. punch set - purple - hard to find in this round shape, super pretty**
- ___ 109. Grape & Cable small size 6 pc. punch set - marigold - nice
- ___ 110. Fruits & Flowers 7" plate - purple - very pretty for these
- ___ **111. Embroidered Mums 9" plate w/ribbed back - ice green - pretty irid., nice plate**
- ___ 112. Tornado small size vase - purple - nice
- ___ **113. Greek Key 6 pc. tankard water set - purple - very pretty for this rare set**
- ___ **114. Stippled Three Fruits ruffled bowl w/ribbed back - aqua opal - butterscotch, scarce, nice**
- ___ 115. Stippled Three Fruits ruffled bowl w/ribbed back - white - scarce
- ___ 116. M'burg Holly Sprig Variant 8" IC shaped bowl - green - radium, nice
- ___ 117. M'burg Holly Sprig 8" IC shaped bowl - amethyst - is the 8" mold but is turned up more, about 7" wide, fantastic radium irid.
- ___ 118. Steuben Tumble Up - green - unusual piece
- ___ 119. Steuben 7" ftd vase - green
- ___ **120. Peacock at the Fountain ruffled fruit bowl - blue - scarce item, highly desirable**

- ___ **121. Peacock at the Fountain ruffled fruit bowl - purple - pretty**
- ___ 122. Hearts & Flowers ruffled compote - aqua opa - nice
- ___ 123. Wreathed Cherry spooner - white w/red cherries
- ___ **124. Concord ruffled bowl - green - very pretty**
- ___ 125. Concord ruffled bowl - marigold - pretty
- ___ 126. Grape & Cable dresser tray - purple - nice
- ___ 127. Grape & Cable dresser tray - marigold - also nice
- ___ **128. Tree Trunk 11 1/2" midsize vase - white - very pretty irid. on this scarce vase**
- ___ 129. Tree Trunk 12" midsize vase - green - pretty
- ___ 130. Tree Trunk 12 1/2" midsize vase - purple - nice example
- ___ 131. Tree Trunk 12 1/2" midsize vase - marigold - pretty
- ___ 132. Peacocks PCE bowl w/ribbed back - purple
- ___ 133. Peacocks PCE bowl w/ribbed back - marigold - nice
- ___ **134. Grape & Cable 7 pc. water set- green - nice set**
- ___ 135. Grape & Cable 7 pc. water set - purple - nice set
- ___ 136. Grape & Cable 5 pc. water set - marigold - nice
- ___ **137. Vintage 9" ruffled bowl - aqua opal - rare bowl, nice**
- ___ **138. Carnival Hobstar butter dish - purple - super irid., a beauty**
- ___ 139. Captive Rose 9" plate - green - silvery
- ___ 140. Captive Rose 9" plate - blue - nice
- ___ **141. M'burg Courthouse ruffled bowl - amethyst - radium, nice**
- ___ 142. Fenton Grape & Cable ftd centerpiece bowl - blue - has plain interior, rare shape
- ___ **143. Wishbone ftd ruffled bowl - ice blue - nice**
- ___ 144. Wishbone ftd ruffled bowl - green - very pretty
- ___ 145. Wishbone ftd ruffled bowl - purple - pretty example
- ___ 146. Grape & Cable hatpin holder - green - nice
- ___ 147. Grape & Cable hatpin holder - purple
- ___ 148. Grape & Cable hatpin holder - marigold
- ___ **149. M'burg Trout & Fly 3 in 1 edge bowl - amethyst - satin**
- ___ 150. M'burg Trout & Fly 3 in 1 edge bowl - marigold - satin, nice
- ___ **151. Nippon PCE bowl w/ribbed back - lime green- very rare color & pretty**
- ___ 152. Nippon PCE bowl w/ribbed back - ice blue
- ___ 153. Nippon PCE bowl w/BW back - white - pretty
- ___ **154. Concave Diamonds guest set or tumble up - vaseline - rare, nice**
- ___ 155. Concave Diamonds 8 pc. lidded water set - celeste blue - has non irid. coasters, but do not match
- ___ 156. Concave Diamonds 6" ruffled vase- celeste blue- scarce
- ___ **157. Fenton's Peacock at Urn 9" plate - blue - a pretty one**
- ___ 158. Fenton's Peacock at Urn 9" plate - white - pretty irid., tiny, tiny pinpoint on point
- ___ 159. Fenton's Peacock at Urn 9" plate - marigold - nice
- ___ **160. Grape & Cable ftd orange bowl - purple - some call this the large fruit bowl, scarce**
- ___ 161. Grape & Cable ftd orange bowl - marigold - scarce
- ___ 162. Fisherman's mug - marigold - nice
- ___ 163. Fisherman's mug - purple
- ___ 164. Good Luck PCE bowl w/ribbed back - blue - has electric highlights
- ___ 165. Good Luck PCE bowl w/ribbed back - purple
- ___ 166. Good Luck PCE bowl w/ribbed back- marigold- dark, nice
- ___ **167. Rustic midsize 16" vase - lime green w/marigold overlay - very rare vase, glows under a black light**
- ___ **168. Greek Key 9" plate w/BW back - green - scarce, nice**
- ___ 169. Peach 7 pc. berry set - white w/gold decoration - scarce
- ___ 170. Stork & Rushes 7 pc. water set - blue
- ___ 171. Grape & Cable 9" plate w/BW back - green - pretty
- ___ 172. Grape & Cable 9" plate w/BW back - purple
- ___ **173. Fern Brand Chocolates advertising 6" plate - purple - pretty, scarce**
- ___ **174. Concord 9" plate - amethyst - scarce & highly desired**
- ___ **175. Peacock at the Fountain spooner - white - scarce, nice**
- ___ 176. Peacock at the Fountain spooner - purple - super pretty
- ___ 177. Peacock at the Fountain spooner - marigold - very pretty
- ___ **178. Pony 6 ruffled bowl - amethyst - pretty irid., scarce color**
- ___ **179. Pony 10 ruffled bowl - purple - very pretty**
- ___ **180. Wishbone 10" PCE bowl w/BW back - white - very scarce color, pretty**
- ___ 181. Raspberry milk pitcher - purple - very pretty example
- ___ 182. Raspberry milk pitcher - marigold
- ___ **183. Grape & Cable banana boat - ice green - pretty irid., scarce**
- ___ **184. Grape & Cable banana boat - ice blue - pretty, scarce color**
- ___ 185. Grape & Cable banana boat - white - nice
- ___ 186. Grape & Cable banana boat - purple
- ___ 187. Grape & Cable banana boat- marigold- dark, nice
- ___ 188. Star of David ruffled bowl - purple - very pretty

- ___ 189. Peacocks ruffled bowl w/ribbed back - ice blue- scarce color, nice
- ___ 190. Peacocks ruffled bowl w/ribbed back - aqua opal - butterscotch, nice
- ___ 191. Peacocks ruffled bowl w/ribbed back - marigold-pretty
- ___ 192. Grape & Cable powder jar - purple - minor nick on rim of lid
- ___ 193. Grape & Cable powder jar – marigold - minor nick on rim of lid
- ___ 194. Grape Arbor 7 pc. tankard water se - ice blue- hard to find set, pretty
- ___ 195. Grape Arbor 7 pc. tankard water set - marigold - nice
- ___ 196. Fenton's Peacock at Urn ruffled bowl - amethyst
- ___ 197. Fenton's Peacock at Urn ruffled bowl - blue - nice
- ___ 198. N's Thin Rib 7" squatty vase - ice blue - scarce, nice
- ___ 199. Stippled Good Luck 9" plate w/ribbed back - blue - scarce color, nice
- ___ 200. Orange Tree 5 pc. ruffled punch set - white - scarce set, highly desirable
- ___ 201. Orange Tree 4 pc. round punch set - marigold
- ___ 202. Dragon & Strawberry IC shaped bowl - blue- scarce, nice
- ___ 203. Dragon & Strawberry IC shaped bowl - marigold - scarce
- ___ 204. Fruits & Flowers 7" ruffled bowl - ice green - very pretty
- ___ 205. Grape & Cable master IC bowl - white - bruise in collar base, pretty
- ___ 206. Grape & Cable master IC bowl - purple - very pretty
- ___ 207. Grape & Cable master IC bowl – marigold - nice
- ___ 208. Grape & Cable master IC bowl - pastel marigold- some may call clambroth
- ___ 209. Grape & Cable IC sauce - ice green
- ___ 210. Grape & Cable IC sauce - ice blue - scarce, very nice
- ___ 211. Grape & Cable IC sauce - white - nice
- ___ 212. Strawberry 9" plate w/BW back - green - fantastic!
- ___ 213. Strawberry 9" plate w/BW back - purple - pretty
- ___ 214. Strawberry 9" plate w/BW back - marigold - nice
- ___ 215. Fern Brand Chocolates handgrip adv. plate - purple - nice
- ___ 216. Grape & Cable tankard water pitcher - marigold - dark, nice
- ___ 217. Old Rose Distillery / Stippled Grape & Cable Variant 9" plate w/ribbed back - green
- ___ 218. M'burg Trout & Fly IC shaped bowl - marigold - satin
- ___ 219. Stippled Strawberry ruffled bowl w/ribbed back - lime green - very scarce bowl & nice
- ___ 220. Pansy ruffled bowl - purple - pretty
- ___ 221. Horse Medallion ftd ruffled bowl - green - scarce color, nice
- ___ 222. Daisy Wreath low round bowl - marigold on milk glass - probably should call it a plate
- ___ 223. Grape & Cable ftd turned in centerpiece bowl- ice green - scarce
- ___ 224. Grape & Cable ftd turned in centerpiece bowl - marigold - nice
- ___ 225. Orange Tree powder jar - blue
- ___ 226. Stretch Glass Wide Panel 9 1/2" bowl - red
- ___ 227. Stretch Glass Wide Panel 8" plate - red
- ___ 228. Stretch Glass Wide Panel 8" plate - teal
- ___ 229. Diamond Lace water pitcher - purple - pretty
- ___ 230. Knights Templar Dandelion mug - ice green - pretty irid. on this rare mug
- ___ 231. Knights Templar Dandelion mug - ice blue - scarce color
- ___ 232. Dandelion mug - aqua opal - nice
- ___ 233. Three Fruits ruffled bowl w/plain back - marigold - pretty
- ___ 234. Ripple 10" vase - aqua teal - 2 7/8" base
- ___ 235. Stippled Grape & Cable ruffled bowl w/ribbed back - ice green - very pretty irid., on this rare bowl, very minor loss in excess glass between points
- ___ 236. M'burg Nesting Swan ruffled bowl - marigold - satin, very pretty
- ___ 237. Many Fruits 8 pc. round punch set - purple - pretty, rare set
- ___ 238. Grape & Cable cologne bottle - marigold - fantastic
- ___ 239. Westmoreland Swirl 8" IC shaped bowl - blue opal - named it ourselves, thought it was Corinth but has 15 points instead of 12, unusual bowl, have never seen this before
- ___ 240. Hearts & Flowers ruffled bowl w/ribbed back- ice green - scarce
- ___ 241. Hearts & Flowers ruffled bowl w/ribbed back - ice blue - nice
- ___ 242. Hearts & Flowers ruffled bowl w/ribbed back - purple - pretty
- ___ 243. Hearts & Flowers ruffled bowl w/ribbed back - marigold - lots of pink & yellow irid.
- ___ 244. Grape & Cable shot glass - purple - nice
- ___ 245. Grape & Cable shot glass - marigold - nice
- ___ 246. Brooklyn Bridge 10 ruffled bowl - marigold - scarce
- ___ 247. Acorn Burrs 7 pc. water set - green - scarce, nice
- ___ 248. Good Luck 9" plate w/BW back - marigold - nice
- ___ 249. Three Fruits dome ftd ruffled bowl- white- nice irid.,

- ___ 250. Grape & Cable whiskey decanter - purple - nick on hole where stopper fits
- ___ 251. Stippled Strawberry PCE bowl w/ribbed back - marigold - pretty
- ___ 252. Peacock at the Fountain creamer - blue - scarce color, nice
- ___ **253. Grape & Cable 7" ruffled bowl w/BW back - ice blue - rare color, nice**
- ___ 254. Grape & Cable small size ftd fruit bowl - whit - pretty
- ___ 255. Grape & Cable small size ftd fruit bowl - marigold - nice
- ___ **256. Cosmos & Cane spittoon shaped whimsey - marigold - very scarce, very nice**
- ___ 257. M'burg Little Stars 7" ruffled bowl - amethyst - satin, nice
- ___ 258. Leaf Chain 9" plate - marigold
- ___ 259. Horse Medallion 7" ruffled bowl - blue
- ___ **260. Graceful 5 1/2" ruffled vase - ice blue - rare color, not many known, nice**
- ___ **261. Grape & Cable candle lamp - purple - nick on top of shade iridized over**
- ___ 262. Beaded Cable rose bowl - aqua opal - pretty
- ___ 263. Beaded Cable rose bowl - marigold
- ___ **264. M'burg Peacock 6" plate - amethyst - rare plate, nice**
- ___ **265. Grape Arbor ruffled hat shape - ice green - made from tumbler**
- ___ 266. Orange Tree hatpin holder - blue
- ___ 267. Orange Tree hatpin holder - marigold
- ___ **268. Stippled Peacocks 9" plate w/ribbed back - blue - electric, super**
- ___ 269. Wishbone & Spade 6" plate - purple
- ___ **270. Grape & Cable perfume bottle - purple - super pretty, scarce**
- ___ **271. Orange Tree Scroll tankard water pitcher - marigold - nice, even color, scarce**
- ___ 272. M'burg Peacock berry sauce - amethyst - radium, nice
- ___ **273. Spector's Department Store / Heart & Vine 9" plate - marigold - scarce & highly desirable**
- ___ **274. Heart & Vine 9" plate - amethyst - very scarce color**
- ___ 275. Grape & Cable pin tray - purple
- ___ 276. Grape & Cable pin tray - marigold - nice
- ___ **277. M'burg Seacoast pin tray - amethyst - perfect example, scarce & nice**
- ___ 278. Grape & Cable candlesticks - marigold
- ___ **279. 1914 Parkersburg Elks 7" plate - blue - super pretty example, very rare, also has a Golden Jubilee Denver, July 1914 pinback button**
- ___ 280. Orange Tree shaving mug - aqua - scarce color, nice
- ___ **281. Grape & Cable straight up center piece bowl - green - scarce color, nice**
- ___ 282. Ski Star ruffled sauce - purple
- ___ **283. Poppy pickle dish - ice blue - pretty irid.**
- ___ 284. Featherstitch ruffled bowl - blue - nice example
- ___ 285. Grape & Cable Variant 9" plate w/plain back - purple - nice
- ___ 286. Basketweave Open Edge 2 sided up basket - red
- ___ 287. Ten Mums ruffled 10" bowl - green
- ___ **288. M'burg Many Stars ruffled bowl - amethyst - very rare in radium, nice, has 5 point star**
- ___ **289. Peacock & Grape 9" plate - marigold - super pretty**
- ___ **290. M'burg Wild Rose 10" kerosene lamp - green - has 6" base, couple minor nicks on inner rim of base**
- ___ 291. Stippled Good Luck ruffled bowl w/ribbed back - marigold
- ___ **292. Butterfly ornament - marigold - very pretty example, rare & desirable!**
- ___ 293. Plaid ruffled bowl - green - scarce color
- ___ **294. Oriental Poppy tankard water pitcher w/1 tumbler - white - pretty irid. on this rare pitcher**
- ___ **295. Poppy Show 9" plate - ice green - super pretty, rare in this color**
- ___ **296. Poppy Show 9" plate - ice blue - very pretty irid., manufacture flat spot on edge, point right next to it has been slightly polished**
- ___ **297. Poppy Show 9" plate - white - pretty irid.**
- ___ **298. Poppy Show 9" plate - blue - one poppy bead has nick, super pretty**

