

BURNS

AUCTION SERVICE

SUPER SLEEPER CARNIVAL GLASS AUCTION AUCTION

FRIDAY, APRIL 7th AT 6:00 P.M. (Lots 1-220)

SATURDAY, APRIL 8th AT 10:00 A.M. (Lots 221-end)

Preview:

Friday evening, April 7th at 4:00 p.m.

Saturday, April 8th at 8:00 a.m.

at the

RAMADA PLAZA HOTEL

1718 Underpass Way, Hagerstown, MD

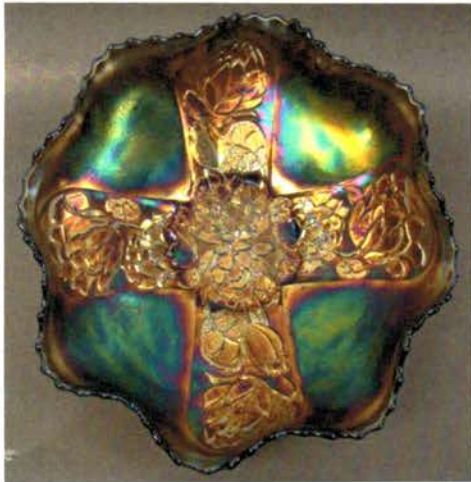
(Exit 5A off I-81)

(301) 797-2500

For more information, call 407-592-6552 or write Tom Burns

6723 Route 415 South, Bath, New York 14810

183 Sunnyside Drive, Clermont, FL 34711



LOT 100



LOT 90



LOT 290



LOT 285



LOT 365

Every once in a while you come across a Sleeper Collection that opens your eyes again to our Carnival Glass hobby. This super grouping of glass hails from a private Upstate New York collection that hasn't seen the light of day since the early 90's. We were sure surprised when given the opportunity to sell this great selection of glass and if you like color and iridescence, you want to make sure to attend this auction. Hope to see you there!

1. PLEASE MAKE YOUR RESERVATIONS ASAP. The hotel is offering a rate of \$79 per night and you can call them direct at 301-797-2500. Mention Burns Auction Service.
2. All photos and listings can be viewed at tomburnsauctions.com.
3. Live internet bidding will be available for this auction via auction flex hi-bid. Please visit our website to join bidding. A 14 % BUYERS PREMIUM WILL APPLY TO ALL ONLINE INTERNET BIDDING ONLY! 10% FOR CASH OR CHECK. WE ALSO ACCEPT ABSENTEE AND PHONE BIDS. Call us at 407-592-6552 OR 503-756-2629 Email tom@tomburnsauctions.com or debra@tomburnsauctions.com for all absentee bidding information.
4. Any damage found at auction will negate any absentee bids.
5. All terms and conditions the same as previous auctions.
6. For further information, call **Tom Burns at (407) 592-6552.**

- | | | | |
|--------|--|--------|--|
| ___1. | 10" Tall Possinger Lg. 6 Ruffled Vase – Red (nice color w/ excellent irid.) | ___24. | 8 1/4" Cambridge Inverted Strawberry Deep Round Bowl – Amethyst (very scarce size) |
| ___2. | 6 1/4" Tall Possinger ftd. 6 Ruffled Vase or Rose Bowl – Red (on a crystal frosted base; unusual) | ___25. | Cambridge Inverted Thistle Handled Covered Sugar Bowl – Amethyst (rare item; has damage to the finial) |
| ___3. | 4 1/4" Tall x 5 1/4" Diameter European Pinwheel ftd. Round Compote – Dk. Mari. (scarce item) | ___26. | Cambridge Inverted Feather Handled Covered Cracker Jar – Green (scarce; nice) |
| ___4. | 5" Tall Eda Curved Star ftd. 10 Ruffled Compote w/ Headdress Int. – Blue (very scarce color for this pattern) | ___27. | Cambridge Small-Size Buzz Saw Cruet w/ no stopper – Green (nice color) |
| ___5. | SOWERBY DIVING DOLPHIN 3 FTD. ROUND FLARED COMPOTE W/ EMBOSSED SCROLL INT. – AQUA (EXTREMELY RARE COLOR FOR THIS SCARCE ITEM) | ___28. | M'burg Swirl Hobnail Rose Bowl – Purple (scarce; average irid.) |
| ___6. | Sowerby Covered Hen on the Nest Butter Dish – Blue (very scarce; nice) | ___29. | M'burg Peacock Tail Variant Stemmed 6 Ruffled Compote – Amethyst (satiny; perfect) |
| ___7. | 9 1/2" AUSTRALIAN KINGFISHER LG. 10 RUFFLED BOWL – PURPLE (VERY SCARCE; NICE COLOR & IRID.) | ___30. | M'BURG MARILYN 7 PC. WATER SET – AMETHYST (RARE; WELL MATCHED; REALLY NICE IRID.) |
| ___8. | 5 3/4" Australian Magpie Small 8 Ruffled Sauce – Purple (scarce; nice color) | ___31. | 7 1/2" M'burg Blackberry Wreath 6 Ruffled Bowl – Amethyst (radium & nice) |
| ___9. | (2) European Ranger Perfume Bottles & Stoppers, and (1) Cologne Bottle & Stopper – Dk. Mari. (selling all 3 in one lot; great color and irid.) | ___32. | 8 1/2" M'burg Blackberry Wreath Round Flared Bowl – Amethyst (radium & nice) |
| ___10. | 9 3/4" IMPERIAL BROCADED DAFFODIL 4 FTD. 8 SIDED CENTER BOWL – RED (EXTREMELY RARE ITEM IN A REALLY RARE COLOR) | ___33. | 8 7/8" M'burg Blackberry Wreath 6 Ruffled Bowl – Green (radium irid.) |
| ___11. | 6" x 7 1/2" Imperial Brocaded Summer Garden Stemmed Round Compote – Clear/ Irid. (scarce; nice irid.) | ___34. | 10 1/4" M'burg Blackberry Wreath Lg. Bowl w/ 3 in 1 Edge – Green (satiny finish) |
| ___12. | 8 1/2" X 5 3/4" TALL FOSTORIA BROCADED ACORN LG. BULBOUS VASE – LAVENDER (RARE COLOR; VERY DESIRABLE) | ___35. | 9 3/4" M'burg Blackberry Wreath Lg. Ice Cream Bowl – Amethyst (radium & really nice) |
| ___13. | 6 7/8" Fostoria Brocaded Palms 2-Sided Handled Bon Bon – Ice Green (nice irid.) | ___36. | 7 3/4" M'burg Holly Sprig Tri-Cornered Bowl – Amethyst (scarce item; has a couple flakes) |
| ___14. | (Maker)? Intaglio Two Fruits Deep Round Bowl – Mari. (scarce; nice irid.) | ___37. | 10" M'burg Holly Whirl Lg. 6 Ruffled Bowl – Amethyst (nice) |
| ___15. | U.S. Glass Cosmos and Cane individual Breakfast Open Sugar and Creamer – White (very rare pair; one has epoxy) | ___38. | 10 1/2" M'BURG ROSALIND LG. 6 RUFFLED BOWL – AMETHYST (NICE EXAMPLE W/ EXCELLENT IRID.) |
| ___16. | 8 3/4" Jenkins Field Thistle Swung Vase – Mari. (very scarce pattern; nice size and color) | ___39. | 8 1/4" M'burg Mayan Ice Cream Shaped Bowl – Green (radium) |
| ___17. | 10" Diamond Glass Company Lustre & Clear Lg. I.C. Bowl – Red w/ white trim (scarce; nice) | ___40. | 8 5/8" X 8 5/8" M'BURG RAYS AND RIBBONS 4-SIDED SQUARE BOWL – GREEN (VERY RARE AND VERY DESIRABLE SHAPE; GREAT RADIUM FINISH) |
| ___18. | 10 3/8" Vineland Glass Company Stretch Lg. 6 Ruffled Bowl – Lavender (nice color) | ___41. | 9 5/8" M'burg Rays and Ribbons 6 Ruffled Crimped Edge Bowl – Amethyst (nice color) |
| ___19. | (2) 4 1/6 – 3/4" Cambridge Inverted Strawberry ind. Round Berry Bowls – Amethyst (selling as a pair) | ___42. | 9" M'BURG ZIG ZAG ROUND FLARED BOWL – AMETHYST (VERY SCARCE PATTERN; NICE IRID.) |
| ___20. | CAMBRIDGE VENETIAN GIANT FTD. ROSE BOWL – GREEN (RARE & VERY DESIRABLE; NICE COLOR) | ___43. | 8 1/2" M'BURG BIG FISH BOWL W/ 3 IN 1 EDGE – DK. MARI. (RARE AND VERY DESIRABLE; HAS A RADIUM FINISH) |
| ___21. | Pair Cambridge Inverted Strawberry Candlesticks – Green (scarce pair; both have some damage to base) | ___44. | 8 1/8" M'BURG TROUT AND FLY BOWL W/ 3 IN 1 EDGE – AMETHYST (REALLY DESIRABLE; NICE) |
| ___22. | Cambridge Inverted Strawberry Covered Powder Jar – Green (scarce; nice) | ___45. | 9 1/2" M'BURG WHIRLING LEAVES TRI-CORNERED CRIMPED EDGE BOWL – GREEN (RADIUM AND VERY DESIRABLE; NICE EXAMPLE) |
| ___23. | 6 1/2" Cambridge Inverted Strawberry Round Bowl – Green (nice irid.) | ___46. | 9 1/4" M'BURG STRAWBERRY WREATH LG. 6 RUFFLED CRIMPED EDGE BOWL – GREEN (NICE; (EXTREME RADIUM IRID. & REALLY DESIRABLE) |
| | | ___47. | 8 1/2" M'burg Grape Wreath Variant low 6 Ruffled Bowl – Green (radium & nice) |
| | | ___48. | 8 3/8" M'burg Grape Wreath Variant Bowl w/ 3 in 1 Edge – Green (radium finish) |

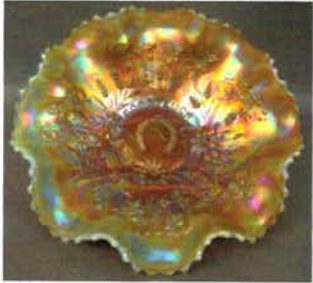
49. 8" M'burg Grape Wreath Variant Bowl w/ 3 in 1 Edge – Amethyst (radium; really nice)
50. **9 1/2" M'BURG PEACOCKS LG. ICE CREAM SHAPED BOWL – AMETHYST (VERY DESIRABLE W/ NICE RADIUM IRID.)**
51. **9 5/8" M'BURG PEACOCKS LG. 6 RUFFLED BOWL – GREEN (ANOTHER RADIUM EXAMPLE; NICE)**
52. M'burg Peacocks 7 pc. Flared Berry Set – Amethyst (rare & desirable set; all radium; damage on master)
53. 9 1/4" M'burg Peacocks Lg. Round Flared Master Berry Bowl – Amethyst (flaked on edge)
54. 10 3/8" M'burg Peacock at the Urn Lg. 6 Ruffled Bowl – Mari. (has bee; no beading; really nice satiny finish)
55. **9" M'BURG NESTING SWAN LG. 6 RUFFLED BOWL – GREEN (NICE RADIUM FINISH)**
56. 10" M'burg Nesting Swan Lg. 6 Ruffled Bowl – Green (satiny)
57. 9 1/2" M'burg Nesting Swan Lg. 6 Ruffled Bowl – Amethyst (radium & nice)
58. 10" M'burg Primrose Lg. 6 Ruffled Bowl – Green (satiny example)
59. 10" M'burg Primrose Lg. 6 Ruffled Bowl w/ 3 in 1 Edge – Mari. (satiny example)
60. **10 1/2" M'BURG SEAWEED LG. 6 RUFFLED BOWL – GREEN (RARE AND DESIRABLE; NICE SATINY EXAMPLE)**
61. **10 1/4" M'BURG SEAWEED LG. 6 RUFFLED BOWL W/ 3 IN 1 EDGE – MARI. (VERY DESIRABLE; NICE SATINY FINISH)**
62. **9 3/8" M'BURG FLEUR DE LIS DOMED 6 RUFFLED CRIMPED EDGE BOWL – MARI. (EXCELLENT RADIUM EXAMPLE)**
63. 9 5/8" M'burg Whirling Leaves low 6 Ruffled Bowl – Mari. (radium & nice)
64. 10 1/8" M'burg Rays and Ribbons 6 Ruffled Bowl w/ 3 in 1 Edge – Mari. (satiny finish)
65. **9 5/8" M'BURG MANY STARS W/ 6 POINTED STAR 6 RUFFLED BOWL W/ 3 IN 1 EDGE – MARI. (RADIUM & RARE W/ EXCELLENT IRID.)**
66. **10" M'BURG MANY STARS W/ 5 POINTED STAR 6 RUFFLED BOWL W/ 3 IN 1 EDGE – GREEN (RADIUM; GREAT COLOR)**
67. 9" M'burg Hanging Cherries 6 Ruffled Bowl w/ 3 in 1 Edge – Green (radium example w/ great irid.)
68. 9 3/4" M'burg Hanging Cherries Lg. I.C. Shaped Bowl – Amethyst (nice satiny finish – nice irid.)
69. 10 1/4" M'burg Hanging Cherries Lg. I.C. Shaped Bowl – Mari. (Satiny finish & really nice irid.)
70. **6" X 6 1/4" M'BURG TRACERY 4-SIDED SQUARE 2-HANDLED BON BON – GREEN (RARE ITEM IN A RARE SHAPE; SATINY & NICE)**
71. M'burg Poppy Stemmed Round Flared Compote – Green (very scarce; odd satiny finish)
72. 7 3/4" M'burg Little Stars 6 Ruffled Bowl – Green (satiny & scarce)
73. 7 1/2" M'burg Little Stars 6 Ruffled Bowl – Amethyst (satiny & scarce)
74. 7 5/8" M'burg Little Stars 6 Ruffled Bowl – Mari. (satiny & scarce)
75. **7 3/4" M'BURG COURTHOUSE 6 RUFFLED BOWL – AMETHYST (RADIUM FINISH W/ EXCELLENT IRID.)**
76. **7 1/8" M'BURG GRAPE WREATH VARIANT 6 RUFFLED BOWL – GREEN (NICE RADIUM FINISH)**
77. **6" M'BURG COSMOS ICE CREAM SHAPED BOWL – GREEN (RADIUM FINISH)**
78. Fenton Hobnail Perfume Bottle & Stopper – Cranberry Opal. (non-carnival)
79. 8 1/2" Tall Fenton Stretch Interior Panels ftd. Fan Vase – Celeste Blue
80. **5" TALL FENTON STRETCH DOUBLE DOLPHIN SMALL FTD. FAN VASE – TANGERINE (VERY SCARCE COLOR)**
81. 6" Tall Fenton Stretch Interior Panels ftd. Fan Vase – Tangerine (nice color)
82. **6 3/4" FENTON STRETCH STIPPLED RAYS STEMMED 6 RUFFLED COMPOTE – VASELINE (VERY SCARCE & VERY DESIRABLE)**
83. Fenton Blackberry 2 Row Open Edge Large-Size 2-Sided Hat – Aqua (scarce shape in a very scarce color)
84. Fenton Blackberry 2 Row Open Edge Large-Size 6 Ruffled Hat – Red (very scarce w/ a nice base color; attractive)
85. **8 1/2" X 7" FENTON STRETCH LARGE 3 ROW OPEN EDGE BASKETWEAVE 2 SIDED HAT – ICE GREEN (RARE AND VERY DESIRABLE IN A GREAT SHAPE)**
86. **6" FENTON STRETCH LARGE 2 ROW OPEN EDGE BASKETWEAVE 4-SIDED HAT – ICE GREEN (VERY DESIRABLE ITEM IN A SCARCE SHAPE)**
87. 6 1/2" Fenton 2 Row Open Edge Basketweave Large 6 Ruffled Hat – Ice Green (great irid.; very desirable)
88. 6" Fenton 2 Row Open Edge Basketweave Small 6 Ruffled Hat – Celeste Blue (very scarce; really nice)
89. 5 5/8" Fenton 2 Row Open Edge Basketweave Small 6 Ruffled Hat – Red (great color; very desirable)
90. **9 1/2" FENTON PEACOCK AT THE URN FLAT PLATE – ELEC. RADIUM BLUE (ABSOLUTELY ONE OF THE VERY BEST EXAMPLES; HAS A MIRROR FINISH RADIUM IRID.)**
91. **9 1/2" FENTON PEACOCK AT THE URN FLAT PLATE – BLUE (VERY SCARCE; NICE COLOR & TYPICAL IRID.)**
92. 9 1/4" Fenton Peacock at the Urn Flared Plate – Mari. (scarce; really nice color & detail)
93. 9" Fenton Peacock at the Urn 8 Ruffled Bowl – Blue (nice color and irid.)
94. 8 7/8" Fenton Peacock at the Urn 8 Ruffled Bowl – Mari. (nice color & irid.)
95. **8 5/8" FENTON PEACOCK AT THE URN 8 RUFFLED BOWL – AMETHYST (SCARCE COLOR; NICE IRID.)**
96. **FENTON KITTENS 4-SIDED TOOTHPICK HOLDER – BLUE (VERY SCARCE; NICE COLOR & IRID.)**
97. Fenton Kittens Round Cereal Bowl – Mari. (very desirable; great color)
98. Fenton Kittens 2-Sided Banana Dish – Mari. (scarce; nice color)
99. 9" Fenton Ribbon Tie low Bowl w/ 3 in 1 Edge – Blue (nice color)
100. **8 3/4" FENTON ABSENTEE GRAPE AND LOTUS 8 RUFFLED BOWL – BLUE (EXTREMELY RARE PATTERN VARIATION; ONLY A FEW KNOWN; HAS A MANUF. CHECK IN BODY)**
101. **9 1/4" FENTON LOTUS AND GRAPE FLAT PLATE – GREEN (RARE AND VERY DESIRABLE W/ EXCELLENT IRID.)**
102. 6 1/2" Fenton Lotus and Grape ball ftd. 6 Ruffled bowl – Green (great color; scarce)
103. 7 3/8" x 8" Fenton Peacock Tail Crimped Edge 4-Sided Square Bowl – Green (very desirable item in a very scarce shape)
104. Fenton Peacock Tail 6 Ruffled Hat w/ "General Furniture Co. 1910" advertising – Green (scarce advertising)
105. **10 3/8" FENTON CHRYSANTHEMUM LG. BALL FTD. ICE CREAM SHAPED BOWL – ELEC. BLUE (EXCELLENT IRID.; VERY DESIRABLE ITEM; GREAT COLOR)**
106. **10 1/2" FENTON CHRYSANTHEMUM LG. BALL FTD. ICE CREAM SHAPED BOWL – GREEN (VERY RARE BASE COLOR W/ A SATINY FINISH)**
107. Fenton Thistle Lg. Oval ftd. Banana Boat – Green (very scarce; nice color & irid.)
108. Fenton Thistle Lg. Oval ftd. Banana Boat – Blue (nice color; really nice irid.)
109. Fenton Cherry Circles 4-Sided 2-Handled Bon Bon – Blue (nice color & irid.)
110. **FENTON APPLE TREE 7 PC. BULBOUS WATER SET – BLUE (VERY RARE AND VERY DESIRABLE SET; GREAT IRID.)**
111. Fenton Orange Tree Covered Powder Jar – Blue (scarce; nice)
112. Fenton Orange Tree ftd. Hatpin Holder – Blue (scarce; nice)
113. **9 1/2" FENTON ORANGE TREE FLAT PLATE – BLUE (VERY SCARCE; REALLY NICE COLOR & IRID.)**
114. Fenton Orange Tree Lg. ftd. Ruffled Fruit Bowl – Blue (scarce; nice color & irid.)

115. **FENTON ORANGE TREE LG. 6 RUFFLED WHIMSEY PUNCH BOWL AND BASE – BLUE (VERY RARE WHIMSEY W/ GREAT COLOR & IRID.; NICE)** 145.
116. **FENTON ORANGE TREE 7 PC. RUFFLED PUNCH BOWL SET – BLUE (VERY SCARCE; NICE; WELL MATCHED SET)** 146.
117. Fenton Orange Tree Standard Handled Flared Mug – Red (very desirable; nice color) 147.
118. Fenton Blackberry Spray 6 Ruffled Hat – Red (nice) 148.
119. 6 ¼" Fenton Acorn Deep Round Bowl – Red (scarce; nice color & irid.) 149.
120. **9 3/8" FENTON LITTLE FLOWERS ICE CREAM SHAPED BOWL – RED (VERY RARE ITEM; GREAT COLOR W/ AVERAGE IRID.)** 150.
121. **9 5/8" FENTON VINTAGE GRAPE LG. ICE CREAM SHAPED BOWL – RED (RARE AND VERY DESIRABLE; NICE RED W/ SPOTTY IRID.)** 151.
122. **9 ¼" FENTON DRAGON AND LOTUS 8 RUFFLED BOWL – RED (RARE AND DESIRABLE; NICE)** 152.
123. **FENTON PERSIAN MEDALLION 4-SIDED 2-HANDLED BON BON – RED (RARE & VERY NICE; EXCELLENT EXAMPLE)** 153.
124. 9" Tall Fenton Butterfly and Berry Swung Vase – Red (rare and one of the better examples; ½" flake on base) 154.
125. **10 3/8" TALL FENTON PLUME PANELS SWUNG VASE – RED (RARE & DESIRABLE; NICE IRID.)** 155.
126. **10 ½" TALL FENTON STRETCH FLORENTINE CANDLESTICK – RED (RARE IF YOU NEED ONE; REALLY RED W/ DARK IRID.)** 156.
127. **PAIR 10 ½" TALL FENTON FLORENTINE CANDLESTICKS W/ WHEEL ETCHED DESIGN – CELESTE BLUE (RARE & EXTREMELY DESIRABLE; NOT MANY ETCHED EXAMPLES)** 157.
128. Pair 10 ½" Tall Fenton Florentine Candlesticks – Grecian Gold (scarce pair; nice irid.) 158.
129. Fenton Dragon's Tongue Lamp Shade – Mari./ Moonstone (scarce; nice color) 159.
130. **FENTON FLUFFY PEACOCK 7 PC. BULBOUS WATER SET – BLUE (VERY SCARCE SET; PITCHER IS NICE)** 160.
131. 7 ½" Fenton Horsehead Medallion Flared Plate – Mari. (nice satiny finish) 161.
132. 7" Fenton Horsehead Medallion 6 Ruffled Bowl – Blue (scarce color; nice) 162.
133. Fenton Horsehead Medallion 3 ftd. Flared Nut Bowl – Amethyst (very scarce base color; has open bubble) 163.
134. Fenton Horsehead Medallion 3 ftd. Flared Nut Bowl – Blue (scarce base color) 164.
135. **FENTON PANTHER LG. FTD. MASTER BERRY BOWL – BLUE (SUPER EXAMPLE W/ EXCELLENT COLOR & IRID. – REALLY NICE ITEM)** 165.
136. **FENTON BUTTERFLY AND FERN BULBOUS HANDLED WATER PITCHER – BLUE (EXCELLENT EXAMPLE; REALLY NICE IRID.)** 166.
137. Fenton G&C Small-Size ftd. Ruffled Fruit Bowl – Amethyst (excellent example) 167.
138. **6 ¼" FENTON LIONS DEEP ROUND FLARED BOWL – POWDER BLUE/ MARI. (VERY SCARCE BASE COLOR; VERY ODD)** 168.
139. 7" Fenton Leaf Chain 6 Ruffled Bowl – Lime Green (odd item; very lightly iridized) 169.
140. **FENTON WREATH OF ROSES W/ PERSIAN MEDALLION INT. ROUND 8 PC. PUNCH SET – AMETHYST (REALLY NICE AND ATTRACTIVE SET)** 170.
141. 8 ½" Fenton Peacock and Grape Spatula ftd. 8 Ruffled Bowl – Lime Green Opal. (very scarce and desirable; chip on knob) 171.
142. **FENTON HOLLY GOBLET SHAPED STEMMED COMPOTE – RED (DARK COLOR; RARE & DESIRABLE)** 172.
143. 9" Fenton Holly 6 Ruffled Bowl – Blue (nice example) 173.
144. 9" Fenton Holly Bowl w/ 3 in 1 Edge – Green (scarce; nice irid.) 174.
- 9 5/8" FENTON HOLLY FLAT PLATE – BLUE (RARE AND DESIRABLE; EXCELLENT IRID.; NICE)**
- 9 5/8" Fenton Holly Flat Plate – Green (very scarce; nice base color; tough!)
- 9 ¾" Fenton Holly Flat Plate – Dk. Mari. (nice color & irid.; excellent example)
- Fenton Peacock at the Urn Stemmed 6 Ruffled Compote – Elec. Blue (super example)
- Fenton Peacock at the Urn Stemmed 6 Ruffled Compote – Aqua/ Mari. (scarce base color)
- 20" TALL X 7" DIAM X 5 1/8" BASE FENTON RUSTIC SWUNG FUNERAL VASE W/ PLUNGER BASE – AMETHYST (RARE & DESIRABLE; GREAT COLOR & IRID.)**
- 18 ½" TALL X 7 ¼" DIAM X 5" BASE FENTON RUSTIC SWUNG FUNERAL VASE – AMETHYST (RARE; DESIRABLE; EXCELLENT COLOR, IRID., & QUALITY)**
- 11 ¼" TALL FENTON APRIL SHOWERS SWUNG VASE – AMETHYST OPAL. (RARE & VERY DESIRABLE ITEM W/ OPAL ON EDGE)**
- 9 7/8" Tall Fenton Knotted Beads Swung Vase – Blue (nice color & irid.)
- 9 1/8" Fenton Captive Rose Flared Plate – Blue (scarce w/ average color & irid.)
- 10" FENTON STAG AND HOLLY LG. FTD. ICE CREAM SHAPED BOWL – BLUE (VERY SCARCE W/ NICE COLOR AND IRID.)**
- 10 5/8" Fenton Stag and Holly Lg. ftd. Ice Cream Shaped Bowl – Blue (scarce; nice color & irid.)
- 10 3/8" Fenton Stag and Holly Lg. 8 Ruffled Bowl – Blue (very desirable; really nice irid.)
- 9" FENTON LITTLE FISHES BALL FTD. ICE CREAM SHAPED BOWL – BLUE (SUPER COLOR & DETAIL W/ EXCELLENT IRID.)**
- 9 ½" Fenton Little Fishes ball ftd. 8 Ruffled Bowl – Mari. (scarce; really nice irid.)
- 9 5/8" FENTON VINTAGE GRAPE LG. ICE CREAM BOWL – MARI./ VASELINE (VERY SCARCE BASE COLOR; REALLY NICE)**
- 8 ¾" FENTON CHERRY CIRCLES LG. 2-SIDED HANDLED BON BON – MARI./ VASELINE (RARE BASE COLOR; VERY TOUGH TO FIND)**
- Fenton Holly Stemmed 6 Ruffled Compote – Mari./ Vaseline (scarce base color)
- 6" Fenton Persian Medallion Ice Cream Shaped Sauce – Mari./ Vaseline (very scarce; tough item)
- FENTON TWO FLOWERS SPATULA FTD. ROSE BOWL – AMBER (EXTREMELY RARE COLOR)**
- 8 7/8" FENTON PETER RABBIT 8 RUFFLED BOWL – MARI. (RARE & DESIRABLE; GREAT SATINY COLOR & DETAIL)**
- 7 5/8" FENTON CONCORD GRAPE DEEP ROUND FLARED BOWL – GREEN (RARE SHAPE; GREAT COLOR & DETAIL)**
- FENTON GARLAND FTD. ROSE BOWL – GREEN EXTREMELY RARE BASE COLOR; FEW KNOWN)**
- Fenton Persian Medallion Lg. Stemmed 6 Ruffled Crimped Compote – (Green; scarce; nice color & irid.)
- 7" Fenton Peacock and Dahlia 6 Ruffled Bowl – Aqua/ Mari. (scarce base color)
- 5 ¾" Fenton Lotus and Poinsettia ftd. 6 Ruffled Sauce – Amber (very scarce base color)
- 6 ½" Fenton Lions Ice Cream Shaped Bowl – Mari. (nice satiny finish)
- Fenton Lattice and Grape Tankard Water Pitcher – Dk. Mari. (really nice example)
- 8 ¼" Fenton Heart and Vine Bowl w/ 3 in 1 Edge – Amethyst (scarce; nice)
- 9 1/8" Fenton Orange Tree 8 Ruffled Bowl – Green (rare base color; just average irid.)

- ___ 175. 10" Fenton Cherry Chain Lg. Bowl w/ 3 in 1 Edge – Blue (scarce; nice)
- ___ 176. 11 1/8" Fenton Boggy Bayou Standard Swung Vase – Amethyst Opal. (not carnival; great opal)
- ___ 177. **CZECH FLORAL DECORATED SMALL BOUDOIR LAMP – MARI. (VERY SCARCE ITEM; VERY UNUSUAL AND NICE)**
- ___ 178. Czech Mountain Lake Scene Hanging Dome Shade – Mari. (scarce; nice detail)
- ___ 179. Czech Mountain Lake Scene Lamp Shade – Mari. (nice item)
- ___ 180. **WESTMORELAND FILE AND FAN STEMMED 6 RUFFLED COMPOTE – BLUE OPAL. (VERY SCARCE AND DESIRABLE; NICE OPAL.)**
- ___ 181. 8 1/2" Westmoreland Scales 6 Ruffled Bowl – Blue Opal. (scarce w/ really nice color and opal.)
- ___ 182. **8 1/2" WESTMORELAND CAROLINA DOGWOOD 6 RUFFLED BOWL – BLUE OPAL. (VERY SCARCE W/ NICE OPAL.)**
- ___ 183. 8 3/8" Westmoreland Daisy Wreath 6 Ruffled Bowl – Blue Opal. (another scarce item w/ nice opal.)
- ___ 184. 9" Westmoreland Smooth Rays 6 Ruffled Bowl – Blue Opal. (scarce; nice opal.)
- ___ 185. **PAIR 9 1/2" TALL U.S. GLASS #315 STRETCH BELL SHAPED SPIRAL CANDLESTICKS – VASELINE (VERY SCARCE W/ EXCELLENT COLOR)**
- ___ 186. 9" U.S. Glass Cosmos and Cane Round Master Berry Bowl – White (scarce; nice irid.)
- ___ 187. Buttons: (1) Alligator – Black and (5) Bird on a Limb – Red (nice bunch of buttons)
- ___ 188. Diamond Glass Company "Mae West" Candlesticks – Ice Green (scarce; nice irid.)
- ___ 189. Dugan Heavy Iris Tumbler – Amethyst (scarce; nice irid.)
- ___ 190. **DUGAN FARMYARD DIAMOND SHAPED SQUARE RUFFLED BOWL W/ J.H. EXT. – PURPLE (RARE & VERY DESIRABLE; GREAT COLOR & IRID.; HAS 1/2" CHIP ON BASE)**
- ___ 191. **10 7/8" DUGAN INTERIOR SMOOTH RIB 8 RUFFLED BOWL W/ J.H. EXT. – PURPLE (SUPER IRID.; KNOWN AS THE "ABSENTEE FARMYARD" BOWL)**
- ___ 192. **10" DUGAN PETAL AND FAN DEEP 8 RUFFLED BOWL W/ J.H. EXT. – PURPLE (VERY SCARCE; NICE IRID.; DESIRABLE)**
- ___ 193. **10 3/4" DUGAN PETAL AND FAN LG. 6 RUFFLED BOWL W/ J.H. EXT. – DK. MARI. (VERY SCARCE W/ EXCELLENT IRID.)**
- ___ 194. 5 7/8" Dugan Petal and Fan 8 Ruffled ind. Berry Bowl w/ J.H. Ext. – Purple (super irid.)
- ___ 195. **10 5/8" DUGAN HEAVY GRAPE LG. 8 RUFFLED BOWL W/ COMPASS EXT. – PURPLE (EXTREMELY RARE & VERY DESIRABLE W/ EXCELLENT IRID.)**
- ___ 196. 6 3/4" Dugan Cherries Crimped Edge Plate w/ J.H. Ext. – Purple (scarce w/ really nice irid.)
- ___ 197. **7 7/8" DUGAN FLOWERS AND FRAMES DOMED DEEP 10 RUFFLED BOWL – PURPLE (VERY SCARCE W/ EXCELLENT IRID.)**
- ___ 198. 6 1/2" Dugan Holly Whirl Ruffled Handled Nappy – Purple (really nice irid.)
- ___ 199. Dugan Puzzle ftd. Handled Round Bon Bon – Blue (very scarce base color)
- ___ 200. **11" SQUARE DUGAN BUTTERFLY AND TULIP LG. FTD. BOWL – PURPLE (RARE AND DESIRABLE; GREAT COLOR AND DETAIL)**
- ___ 201. 11 1/2" x 9" Dugan Butterfly and Tulip Lg. Oval ftd. Bowl w/ I.F.F. Ext. – Mari. (very scarce; nice color and detail)
- ___ 202. 11 7/8" Dugan Persian Garden Lg. 6 Ruffled Bowl – Amethyst (very scarce; large item w/ a satiny finish)
- ___ 203. **(5) 6" DUGAN PERSIAN GARDEN 6 RUFFLED IND. BERRY BOWLS – PURPLE (SCARCE ITEMS; SELLING SO MUCH EACH FOR SET)**
- ___ 204. 11 5/8" Dugan Persian Garden Lg. 6 Ruffled Bowl – P Opal. (rare & desirable; has manuf.(2) flattened points)
- ___ 205. **10 3/8" DUGAN GARDEN PATH LG. 6 RUFFLED BOWL W/ SODA GOLD EXT. – PURPLE (ABSOLUTELY SUPER EXAMPLE; GREAT IRID.)**
- ___ 206. **8 1/4" DUGAN SKI STAR DOMED 10 RUFFLED BOWL – PURPLE (EXCELLENT COLOR & IRID.; SUPER)**
- ___ 207. **10 7/8" DUGAN SKI STAR LG. 6 RUFFLED BOWL W/ COMPASS EXT. – PURPLE (ANOTHER REALLY NICE EXAMPLE W/ EXCELLENT IRID.)**
- ___ 208. 11" Dugan Ski Star Lg. 6 Ruffled Bowl w/ Compass Ext. – Purple (nice example; nice irid.)
- ___ 209. 9 1/2" Dugan Cosmos Variant Lg. 6 Ruffled Bowl – Purple (scarce)
- ___ 210. **10 1/2" DUGAN WISHBONE AND SPADES FLAT CHOP PLATE – PURPLE (RARE AND VERY DESIRABLE; SUPER IRID. – TOUGH TO FIND)**
- ___ 211. **6 1/2" DUGAN WISHBONE AND SPADES FLAT PLATE – PURPLE (VERY DESIRABLE; NICE COLOR & IRID.)**
- ___ 212. 9 1/2" Dugan Wishbone and Spades Ice Cream Shaped Bowl – P. Opal. (scarce w/ excellent opal.)
- ___ 213. 9 1/2" Dugan Garden Path Variant Lg. Ice Cream Shaped Bowl – White (very scarce; super irid.; nice item)
- ___ 214. 5 3/4" Dugan Garden Path Variant ind. 6 Ruffled Berry Bowl – P. Opal. (scarce; nice opal.)
- ___ 215. **9" DUGAN APPLE BLOSSOM TWIGS BOWL W/ 3 IN 1 EDGE – PURPLE (VERY SCARCE; VERY DESIRABLE; REALLY NICE)**
- ___ 216. **8 5/8" DUGAN APPLE BLOSSOM TWIGS 10 RUFFLED BOWL – PURPLE (ANOTHER REALLY NICE ITEM W/ NICE IRID.)**
- ___ 217. 9 1/8" Dugan Apple Blossom Twigs Bowl w/ 3 in 1 Edge – P. Opal (scarce; nice opal.)
- ___ 218. 8 3/4" Dugan Border Plants domed Bowl w/ 3 in 1 Edge – P. Opal. (very scarce pattern; nice opal.)
- ___ 219. 6 3/4" Dugan Four Flowers Flat Plate w/ Plain Ext. – P. Opal (scarce; nice item)
- ___ 220. 11 1/2" Dugan Victorian Lg. 8 Ruffled Bowl – Purple (very scarce; tough pattern to find)
- ___ 221.
- ___ 222.
- ___ 223.
- ___ 224.
- ___ 225.
- ___ 226.
- ___ 227.
- ___ 228.
- ___ 229.
- ___ 230.
- ___ 231.
- ___ 232.
- ___ 233.
- ___ 234.

START OF 2ND SESSION

- 9" DUGAN paneled cherries 3 ftd. bowl w/ 3 in 1 edge – amethyst (very desirable w/ excellent irid.)
- 8 7/8" x 6 1/2" Dugan Paneled Cherries 3 ftd. Ruffled 2-Sided Banana Bowl – Amethyst (another very scarce Dugan item)
- 9 3/8" x 6 1/2" Dugan Raindrops domed Ruffled 2-Sided Banana Dish – Purple (very scarce; satiny)
- 7 3/4" DUGAN SIX PETALS 6 RUFFLED BOWL – PURPLE (ABSOLUTELY SUPER IRID.; OUTSTANDING)**
- 9" DUGAN ROUND UP LOW 10 RUFFLED PLATE – LT. AMETHYST (VERY DESIRABLE; NICE IRID.)**
- 8 7/8" Dugan Round Up low 10 Ruffled Plate – Purple (super irid. but has a small chip on one tip)
- 9 1/8" Dugan Round Up Flat Plate – Blue (very scarce w/ a nice satiny finish)
- 9" Dugan Round Up Flared Plate – Purple (scarce; nice finish)
- 9" Dugan Round Up Bowl w/ 3 in 1 Edge – P. Opal. (scarce; nice opal.)
- 9" DUGAN FANCIFUL LOW 10 RUFFLED BOWL/ PLATE – AMETHYST (VERY SCARCE & DESIRABLE; NICE IRID.)**
- 8 3/4" DUGAN DOUBLE STEM ROSE DOMED BOWL W/ 3 IN 1 EDGE – AMETHYST (ABSOLUTELY SUPER IRID.; GREAT IRID.; NICE!)**
- 9 1/8" Dugan Double Stem Rose domed 10 Ruffled Bowl – Blue (very scarce base color)
- 9 1/4" Dugan Weeping Cherry domed 10 Ruffled Bowl – Mari. (scarce pattern)
- 7 1/2" DUGAN FIVE HEARTS DOMED FLARED BOWL / PLATE – MARI. (VERY SCARCE PATTERN; NICE SATINY IRID.)**



LOT 450



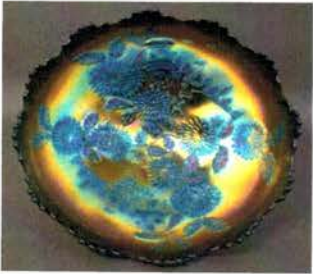
LOT 300



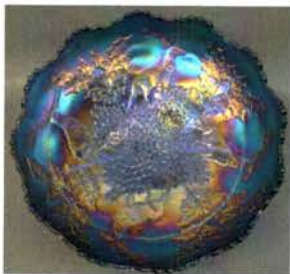
LOT 216



LOT 210



LOT 105



LOT 155



LOT 161



LOT 197



LOT 120



LOT 395



LOT 380



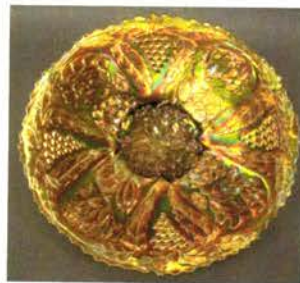
LOT 150



LOT 126



LOT 286



LOT 101



LOT 115



LOT 430



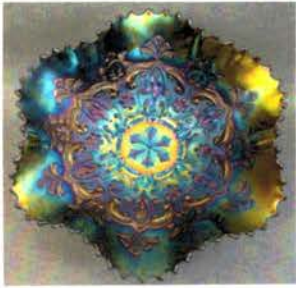
LOT 60



LOT 61



LOT 110



LOT 205



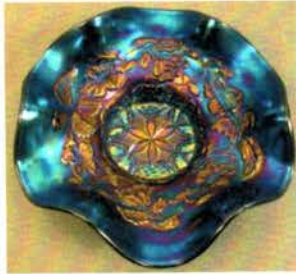
LOT 226



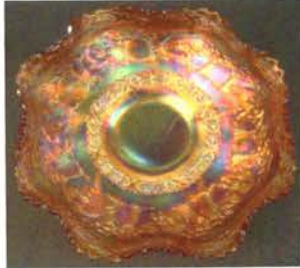
LOT 310



LOT 451



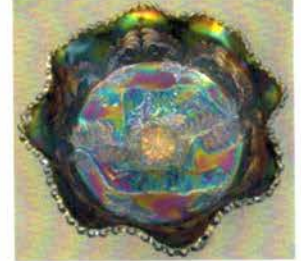
LOT 224



LOT 165



LOT 158



LOT 135



LOT 375



LOT 420



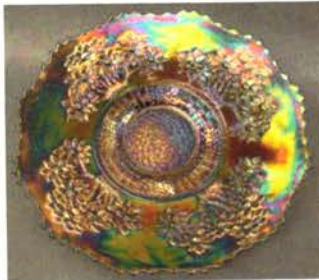
LOT 396



LOT 121



LOT 116



LOT 113



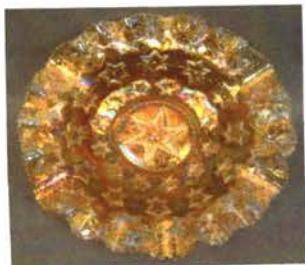
LOT 287



LOT 127



LOT 130



LOT 65



LOT 66



LOT 440

235. **8 1/2" DUGAN DOUBLE STEM ROSE DOMED 10 RUFFLED BOWL – CELESTE BLUE (RARE & DESIRABLE; GREAT COLOR & STRETCH EFFECT)**
236. Dugan Constellation Stemmed 6 Ruffled Compote – White (nice frosty finish)
237. Dugan Lattice and Points 8 Ruffled Hat/ Vase – White (scarce w/ excellent irid.)
238. 7 1/2" Dugan Fishscale Flat Plate – White (scarce; nice irid.)
239. 9" Dugan Fanciful Flared Plate – White (scarce; nice irid.)
240. **7" DUGAN QUESTION MARK FTD. FLAT PLATE W/ GEORGIA PEACH & PUZZLE EXT. – WHITE (VERY SCARCE ITEM; NICE IRID.)**
241. 5 5/8" Dugan Question Mark ftd. Ice Cream Shaped Compote w/ Georgia Peach and Puzzle Ext. – Purple (scarce; nice)
242. Dugan Dahlia ftd. Covered Butter Dish – Amethyst (very scarce item; nice color)
243. Dugan Dahlia ftd. Handled Creamer – Amethyst (scarce item)
244. Dugan Dahlia ftd. Spooner – Amethyst (scarce item)
245. **DUGAN PEACOCK AT THE FOUNTAIN 7 PC. WATER SET – BLUE (SCARCE & DESIRABLE SET; NICE IRID.)**
246. **DUGAN BEADED SHELL FTD. COVERED BUTTER DISH – MARI. (VERY TOUGH ITEM; NICE SATINY FINISH)**
247. 8 3/4" Dugan Brooklyn Bridge 10 Ruffled Bowl – Mari. (very scarce; has a radium finish)
248. Dugan Honeycomb Rose Bowl – P. Opal. (scarce; nice opal.)
249. 7 3/4" Dugan Interior Swirl Tri-Pinched Hyacinth Vase – P. Opal. (scarce; nice opal.)
250. **5" TALL X 3 3/4" DIAM. DUGAN BIG BASKETWEAVE SQUATTY FLARED VASE – PURPLE (VERY DESIRABLE; REALLY GREAT IRID.)**
251. 8 1/4" Tall Dugan Lattice and Points 6 Ruffled Flared Vase – Purple (scarce; nice irid.)
252. 12 1/8" Tall Dugan Target Swung Vase – Purple (really nice irid.)
253. (1) 8 1/2" and (1) 9 1/2" Tall Dugan Twigs Swung Bud Vases – Amethyst (scarce; selling for one money)
254. Dugan Mary Ann 2-Handled Vase – Amethyst (scarce)
255. 10 1/2" Dugan Lined Lattice Swung Vase – Purple (very desirable w/ nice irid.)
256. **DUGAN PASTEL SWAN MASTER SALT – PURPLE (VERY DESIRABLE; HAS REALLY NICE IRID.)**
257. **DUGAN 2-HANDLED BEADED BASKET – PURPLE (SUPER COLOR & HAS REALLY NICE IRID.)**
258. 6 3/4" Dugan Bellflower Tri-Cornered Crimped Edge Bowl – Purple (nice irid.; scarce)
259. 6 3/4" Dugan Bellflower low 8 Ruffled Bowl – Purple (nice irid.)
260. **8 1/4" DUGAN LATTICE AND HEARTS EXTERIOR PATTERNED 8 RUFFLED BOWL – PURPLE (RARE & UNDERVALUED; NICE IRID.)**
261. Dugan Nautilus domed Handled Creamer Whimsey – Purple (nice irid.; very scarce)
262. **7 5/8" DUGAN/ DIAMOND STRETCH EGYPTIAN LINE FLARED BOWL – PURPLE (GREAT IRID.; VERY DESIRABLE)**
263. 7 3/4" Imperial Jewels Flared Plate signed with Iron Cross – Amethyst (very desirable; nice platinum irid.)
264. 6 5/8" x 6 5/8" Imperial Jewels 4-Sided Square Bowl signed with Iron Cross – Amethyst (very scarce item; nice shape and irid.)
265. **5 3/4" TALL IMPERIAL JEWELS CYLINDER CUPPED-IN VASE SIGNED WITH IRON CROSS – AMETHYST (RARE & DESIRABLE W/ SUPER IRID.; NICE)**
266. 4 3/4" Tall Imperial Jewels Cylinder Cupped-In Vase signed with Iron Cross – Amethyst (rare w/ a nice platinum finish)
267. **5 3/4" X 5 3/4" IMPERIAL JEWELS 4 RUFFLED CUPPED-IN ROSE BOWL SIGNED WITH IRON CROSS – AMETHYST (ANOTHER ATTRACTIVE EXAMPLE W/ NICE IRID.)**
268. **6" TALL IMPERIAL JEWELS PINCHED-IN 8 RUFFLED VASE SIGNED WITH IRON CROSS – AMETHYST (GREAT SHAPE & VERY DESIRABLE; NICE IRID.)**
269. 10 1/4" Imperial Jewels Lg. Round Flared Bowl signed with Iron Cross – Mari. (nice size w/ great color & irid.)
270. **18 1/4" TALL X 6 3/4" TOP DIAM. X 4 5/8" BASE IMPERIAL RIPPLE SWUNG FUNERAL VASE – MARI./ LT. GREEN-VASELINE (RARE & DESIRABLE BASE GLASS; NICE IRID. AND IT GLOWS)**
271. 12" Tall x 3 3/5" Base Imperial Ripple Odd Swung Vase – Purple (great irid.; (2) Ruffles form a spout)
272. 12" Tall x 3 3/5" Base Imperial Ripple Swung Vase – Purple (really nice irid.)
273. 10 3/4" Tall x 2 7/8" Base Imperial Ripple Swung Vase – Purple (manuf. roughness on edge)
274. 9" Tall x 2 7/8" Base Imperial Ripple Swung Vase – Amber (scarce color)
275. **8 1/2" TALL X 5 11/16" DIAM. IMPERIAL BEADED BULLSEYE FLARED VASE – PURPLE (DESIRABLE W/ EXCELLENT IRID.)**
276. **11 3/4" TALL IMPERIAL BEADED BULLSEYE SWUNG VASE – PURPLE (SUPER IRID.)**
277. 11 3/4" Tall Imperial Beaded Bullseye Swung Vase – Purple (another example w/ excellent irid.)
278. 8 3/4" Tall Imperial Beaded Bullseye Swung Flared Vase – Lime Green (scarce base color)
279. 12" Tall Imperial Beaded Bullseye Swung Vase – Dk. Mari. (super irid.)
280. **8" TALL X 6" FLARED X 3 1/2" BASE IMPERIAL INTERIOR PANELS SWUNG FLARED VASE – PURPLE (SUPER ITEM W/ SUPER IRID.)**
281. 12 1/4" Tall Imperial Freefold Swung Vase – Purple (scarce; super irid.)
282. Imperial 474 Large Handled Water Pitcher – Dk. Mari. (scarce; nice color)
283. Imperial 474 Tumbler – Mari.
284. Imperial Poinsettia Handled Milk Pitcher – Green (scarce)
285. **IMPERIAL POPPY SHOW LG. FLARED VASE – PURPLE (EXTREMELY RARE W/ EXCELLENT COLOR)**
286. **IMPERIAL LOGANBERRY VASE W/ FLARED TOP – PURPLE (SUPER EXAMPLE W/ AN UNUSUAL TOP & GREAT IRID.)**
287. **IMPERIAL LOGANBERRY VASE W/ 8 RUFFLED TOP – PURPLE (SUPER EXAMPLE; GREAT IRID.)**
288. Imperial Flute Breakfast Open Sugar & Creamer – Purple (scarce pair; nice)
289. Imperial Flute Toothpick Holder – Purple (nice irid.)
290. **IMPERIAL FLUTE 8 PC. FLARED PUNCH SET – PURPLE (VERY RARE AND VERY DESIRABLE; GREAT COLOR)**
291. Imperial Heavy Grape Flared Punch Top Only – Dk. Mari. (scarce; nice irid.)
292. 8 1/2" Imperial Heavy Grape Flared Plate – Purple (super irid.)
293. 6 3/4" Imperial Heavy Grape Deep Round Bowl – Purple (super irid.)
294. 8" Imperial Heavy Grape Flared Plate – Helios Green
295. **11 1/8" IMPERIAL HEAVY GRAPE CHOP PLATE – AMETHYST (VERY SCARCE & DESIRABLE; NICE IRID.)**
296. 11" Imperial Heavy Grape Chop Plate – Amber (nice color & irid.)
297. 11" Imperial Heavy Grape Chop Plate – Helios Green
298. (2) Imperial Rococo ftd. 6 Ruffled Vases – Mari. (selling so much each for pair)
299. Imperial Corn Bottle – Dk. Mari. (nice but has epoxied damage on top spout)
300. **IMPERIAL BROKEN ARCHES 6 PC. PUNCH SET – PURPLE (SUPER EXAMPLE OF A RARE & DESIRABLE SET)**
301. 7 3/4" Imperial Star Spray Flat Plate – Dk. Smoke (rare & flat)
302. 8" Imperial Lustre Rose 3 ftd. 6 Ruffled Bowl – Aqua/ Teal (light irid.; odd base color)
303. 7 1/4" Imperial (Fine Cut) 6 Ruffled Bowl – Purple (super irid.)
304. 6 7/8" Imperial Windmill Deep Round Bowl – Purple (super irid.)

- ___ 305. **IMPERIAL PANSY FLAT OVAL DRESSER TRAY – PURPLE (VERY RARE ITEM W/ GREAT IRID. – FLAT!)**
- ___ 306. 9 3/8" Imperial Pansy low 8 Ruffled Plate – Lavender (scarce color; great irid.)
- ___ 307. 9 3/16" Imperial Pansy 8 Ruffled Bowl – Amethyst (super irid.)
- ___ 308. 9" Imperial Cobblestone 8 Ruffled Bowl – Amethyst (spotty super irid.)
- ___ 309. **8 5/8" IMPERIAL STAR OF DAVID 8 RUFFLED BOWL – PURPLE (SUPER SCARCE & VERY DESIRABLE)**
- ___ 310. **IMPERIAL GRAPE ROUND PUNCH BOWL AND BASE – PURPLE (RARE & VERY DESIRABLE; GREAT COLOR & BLUE HIGHLIGHTS)**
- ___ 311. **9" IMPERIAL GRAPE 8 RUFFLED BOWL – PURPLE (SUPER, SUPER ELECTRIC IRID.)**
- ___ 312. 10 3/4" Imperial Grape Lg. 8 Ruffled Master Berry Bowl – Purple (super irid.)
- ___ 313. 10 3/4" Imperial Grape Lg. 8 Ruffled Master Berry Bowl – Purple (really nice irid.)
- ___ 314. Imperial Grape Stemmed 6 Ruffled Compote – Purple (super irid.; great color)
- ___ 315. 6 1/2" Imperial Grape Flat Plate – Amber (very scarce base color)
- ___ 316. 9 3/4" Imperial Acanthus Flat Plate – Dk. Mari. (really nice example)
- ___ 317. 9 3/4" Imperial Fleur De Lis #5 domed 6 Ruffled Bowl – Smoke (very scarce item w/ excellent irid.)
- ___ 318. 9 3/8" Imperial Shell Flat Plate – Smoke (rare; polished base)
- ___ 319. 7 1/2" Imperial Shell 8 Ruffled Bowl – Smoke (super irid.)
- ___ 320. **7 1/2" IMPERIAL SAND AND SHELL 8 RUFFLED BOWL – PURPLE (ABSOLUTELY SUPER IRID.; REALLY NICE!)**
- ___ 321. 7 1/2" Imperial Acanthus Deep Round Bowl – Purple (very scarce w/ excellent irid.)
- ___ 322. **3" X 5 1/8" IMPERIAL PROPELLER FTD. 6 RUFFLED MINI-COMPOTE – PURPLE (EXTREMELY RARE ITEM IN THIS COLOR; SUPER IRID.)**
- ___ 323. **4 7/8" TALL IMPERIAL OCTAGON STEMMED ROUND COMPOTE – PURPLE (EXTREMELY RARE; PERFECT W/ EXCELLENT IRID.)**
- ___ 324. Imperial Octagon Small-Collar Based Water Pitcher – Pastel Mari. (very odd & unusual base color for this item)
- ___ 325. **10 1/4" IMPERIAL HOMESTEAD CHOP PLATE - SIGNED NUART – PURPLE (RARE AND VERY DESIRABLE ITEM W/ SATINY FINISH)**
- ___ 326. 10 1/4" Imperial Homestead Chop Plate – not signed – Purple (super irid. but has a 1/4" chip at 8 o'clock)
- ___ 327. Imperial Diamond Lace 7 pc. Water Set – Purple (super irid.; very attractive and nice)
- ___ 328. **IMPERIAL FIELDFLOWER HANDLED WATER PITCHER – PURPLE (VERY SCARCE W/ REALLY NICE IRID.)**
- ___ 329. Imperial Fieldflower Tumbler – Purple (scarce item; nice)
- ___ 330. **IMPERIAL GRAPE HANDLED WATER PITCHER – PURPLE (SUPER EXAMPLE W/ SUPER IRID.)**
- ___ 331. **IMPERIAL GRAPE WINE DECANTER & STOPPER – PURPLE (SUPER EXAMPLE W/ GREAT IRID.)**
- ___ 332. Imperial Grape Wine Decanter & Stopper – Amethyst (really nice base color w/ great irid.)
- ___ 333. Imperial Grape Wine Decanter & Stopper – Dk. Mari. (nice color)
- ___ 334. **IMPERIAL GRAPE WATER CARAFE – PURPLE (SUPER W/ BLUE HIGHLIGHTS)**
- ___ 335. Imperial Grape Water Carafe – Amethyst (really fine irid.)
- ___ 336. 9" Imperial Embossed Scroll Lg. 8 Ruffled Bowl w/ File Ext. – Lt. Amethyst (scarce; bit of spottiness in center)
- ___ 337. (6) 5 3/4" Imperial Embossed Scroll 8 Ruffled ind. Berry Bowls w/ File Ext. – Purple (super set; selling so much each for set)
- ___ 338. 5 5/8" Imperial Embossed Scroll 8 Ruffled ind. Berry Bowl w/ File Ext. – Purple (super elec. blue irid.)
- ___ 339. 5 1/2" Imperial Embossed Scroll 8 Ruffled ind. Berry Bowl w/ File Ext. – Smoke (very scarce base color)
- ___ 340. 8" Imperial Embossed Scroll Round Flared Bowl – Amethyst (super irid.)
- ___ 341. 7 1/2" Imperial Embossed Scroll 8 Ruffled Bowl – Purple (really super example)
- ___ 342. 8" Imperial Embossed Scroll Round Flared Bowl – Purple (nice irid.)
- ___ 343. 6" Imperial Twins 6 Ruffled ind. Berry Bowl – Green (odd color)
- ___ 344. European Art Glass 10 Ruffled Brides Bowl in S/ P Frame – Red (very desirable...maker?)
- ___ 345. **N'WOOD POINSETTIA 7 PC. TANKARD WATER SET – CLEAR/ OPAL. (VERY SCARCE SET; COMPLETE & NICE)**
- ___ 346. **EUROPEAN CRIMPED EDGE ENAMELED BRIDES BOWL IN S/P FRAME – ENAM. OPAL (VERY DESIRABLE ITEM; REALLY NICE DÉCOR)**
- ___ 347. 5 1/2" Tall x 8" Diam. N'wood Stretch Cupped Pedestaled Compote w/ Tree of Life Base – Vaseline (nice color; very scarce)
- ___ 348. 5 5/8" N Peacock at the Urn ind. Ice Cream Bowl – Purple (really nice irid.)
- ___ 349. 5 3/4" N Peacock at the Urn ind. Ice Cream Bowl – Purple (average irid.)
- ___ 350. **9 1/2" N PEACOCK AT THE URN LG. ICE CREAM BOWL – ICE GREEN (RARE & VERY DESIRABLE; REALLY GREAT IRID.)**
- ___ 351. **9" N PEACOCKS 8 RUFFLED BOWL W/ RIBBED EXT. – AQUA OPAL. (RARE & DESIRABLE W/ SUPER PASTEL IRID.)**
- ___ 352. **9" N PEACOCKS 8 RUFFLED BOWL W/ RIBBED EXT. – AQUA OPAL. (RARE & DESIRABLE W/ SUPER PASTEL IRID.)**
- ___ 353. 8 5/8" N Peacocks 8 Ruffled Bowl w/ Ribbed Ext. – Aqua Opal. (another rare & desirable pastel example; has a bent point)
- ___ 354. 8 7/8" N Peacocks 8 Ruffled Bowl w/ Ribbed Ext. – Blue Opal. (not carnival but scarce)
- ___ 355. **9" N PEACOCKS 8 RUFFLED BOWL W/ RIBBED EXT. – BLUE/ ELEC. BLUE (SCARCE W/ NICE BLUE HIGHLIGHTS)**
- ___ 356. 9" N Peacocks 8 Ruffled Bowl w/ Ribbed Ext. – Blue (1/2" sanded spot on edge)
- ___ 357. 8 3/4" N Peacocks 8 Ruffled Bowl w/ Ribbed Ext. – Dk. Mari. (nice color & irid.)
- ___ 358. **8 3/4" N PEACOCKS BOWL W/ P.C.E. AND RIBBED EXT. – PURPLE (SUPER EXAMPLE; GREAT IRID.)**
- ___ 359. 9" N Peacocks Bowl w/ P.C.E. and Ribbed Ext. – Blue (scarce; nice color)
- ___ 360. **9 1/4" N PEACOCKS FLAT PLATE W/ RIBBED EXT. – PURPLE (GREAT EXAMPLE W/ WONDERFUL RIBBED IRID.)**
- ___ 361. **9 1/8" N PEACOCKS PLATE W/ RIBBED EXT. – BLUE/ ELEC. BLUE (SCARCE; NICE COLOR)**
- ___ 362. **9" N PEACOCKS FLARED PLATE W/ RIBBED EXT. – SODA GOLD AMETHYST (VERY SCARCE BASE COLOR; NICE IRID.)**
- ___ 363. 9" N Peacocks Flat Plate w/ Ribbed Ext. – Lime Ice Green (strong base color w/ nice irid.)
- ___ 364. 9" N Peacocks Flared Plate w/ Ribbed Ext. – Green (super irid.; has a chipped point at 7 o'clock)
- ___ 365. **N PEACOCK AT THE FOUNTAIN 8 PC. RUFFLED PUNCH SET – PURPLE (ONE OF THE VERY BEST SETS I'VE SEEN IN THIS PATTERN; SUPER BLUE HIGHLIGHTS)**
- ___ 366. **N PEACOCK AT THE FOUNTAIN 3 FTD. RUFFLED FRUIT BOWL – PURPLE (GREAT EXAMPLE W/ GREAT IRID.)**
- ___ 367. N Peacock at the Fountain 6 pc. Table Set – Purple (scarce and very desirable set; tough)
- ___ 368. **N SINGING BIRDS HANDLED MUG – AQUA OPAL. (RARE & DESIRABLE W/ A TOUCH OF BUTTERSCOTCH)**
- ___ 369. **N SINGING BIRDS HANDLED MUG – AQUA OPAL. (RARE & DESIRABLE W/ A SUPER PASTEL IRID.)**
- ___ 370. **N SINGING BIRDS 7 PC. WATER SET – GREEN (VERY DESIRABLE W/ SUPER IRID. HIGHLIGHTS)**
- ___ 371. N Blackberry Stemmed 6 Ruffled Compote – Green (super)
- ___ 372. N Raspberry ftd. Handled Gravy Boat – Green (scarce; nice w/ good feet)

373. **N DAISY AND DRAPE FLARED FTD. VASE – AQUA OPAL. (RARE AND A REALLY NICE EXAMPLE)**
374. N Daisy and Drape Turned-In ftd. Vase – White (nice frosty irid.)
375. **21 1/8" TALL X 7 1/2" TOP DIAM. X 5 1/2" BASE N TREE TRUNK SWUNG FUNERAL VASE W/ PLUNGER BASE – BLUE/ ELEC. BLUE (RARE & VERY DESIRABLE; SUPER HIGHLIGHTS; MAY HAVE A BIT OF PEELING ON TOP EDGE)**
376. **12 3/8" TALL X 4 3/4" BASE N TREE TRUNK MID-SIZE SWUNG VASE – WHITE (VERY SCARCE; FROSTY W/ EXCELLENT IRID.)**
377. 13 3/4" Tall x 4 3/4" Base N Tree Trunk Mid-Size Swung Vase – Mari. (really nice irid.)
378. 6" Tall x 5 3/8" Diam. N Tree Trunk Squatty Flared Vase – Purple (super example)
379. 6 3/4" Tall x 5" Diam. N Tree Trunk Squatty Flared Vase – Green (super example)
380. **10 1/2" TALL N TREE TRUNK STANDARD SWUNG VASE – AQUA OPAL. (RARE & DESIRABLE W/ GREAT PASTEL IRID.)**
381. 10" Tall N Tree Trunk Standard Swung Vase – Purple (super irid.)
382. 7" Tall N Tree Trunk Squatty Swung Vase – Odd Teally Green (odd base color; sorta different)
383. N Butterfly 2 Handled 4-Sided Bon Bon – Amethyst (nice irid.)
384. N Grape Arbor 7 pc. Tankard Water Set – Dk. Mari. (really nice set)
385. **N WISHBONE 5 PC. BULBOUS WATER SET – GREEN (RARE AND VERY DESIRABLE SET; NICE)**
386. 8 1/2" N Wishbone ftd. Flared Plate w/ Ruffles and Rings Ext. – Green (very scarce w/ a nice satiny finish)
387. 8 3/8" N Wishbone ftd. 8 Ruffled Bowl w/ Ruffles and Rings Ext. – Amethyst (nice irid.; desirable)
388. **8 3/4" N LATTICE AND POINSETTIA FTD. 8 RUFFLED BOWL W/ RIBBED EXT. – BLUE (ALWAYS A POPULAR PATTERN W/ BLUE HIGHLIGHTS)**
389. 8 5/8" N Embroidered Mums 8 Ruffled Bowl w/ Ribbed Ext. – Amethyst (scarce w/ a nice goldish finish)
390. **8 1/2" N HEARTS AND FLOWERS 8 RUFFLED BOWL W/ PLAIN EXT. – LIME ICE GREEN (RARE BASE COLOR W/ EXCELLENT HIGHLIGHTS)**
391. 8 3/4" N Hearts and Flowers 8 Ruffled Bowl w/ Ribbed Ext. – Ice Blue (scarce w/ nice color and irid.)
392. **N HEARTS AND FLOWERS STEMMED 6 RUFFLED COMPOTE W/ RIBBED EXT. – BLUE/ ELEC. BLUE (VERY DESIRABLE W/ SUPER IRID.)**
393. **N POPPY OBLONG 8 RUFFLED RELISH TRAY W/ RIBBED EXT. – ELEC. BLUE (ABSOLUTELY SUPER EXAMPLE!!!)**
394. N Poppy Oblong 8 Ruffled Relish Tray w/ Ribbed Ext. – Elec. Blue (another excellent example; nice)
395. **N BEADED CABLE FTD. RUFFLED ROSE BOWL – ICE GREEN (RARE AND DESIRABLE; PERFECT AND NICE)**
396. **N BEADED CABLE FTD. RUFFLED ROSE BOWL – AQUA OPAL. (EXCELLENT EXAMPLE – ATTRACTIVE)**
397. N Beaded Cable ftd. Ruffled Rose Bowl – White (very scarce; frosty and nice)
398. N Beaded Cable ftd. Ruffled Rose Bowl – Amethyst (nice color & irid.)
399. **N CORN VASE W. STALK BASE – ICE GREEN (VERY SCARCE; REALLY NICE IRID. AND COLOR)**
400. **N ROSE SHOW FLAT PLATE – ICE GREEN OPAL. (EXCELLENT EXAMPLE AND VERY RARE; NICE ITEM)**
401. N Rose Show Flat Plate – Ice Green (rare & desirable; average irid. and flat)
402. N Rose Show Flared Plate – White (scarce and desirable; nice irid.)
403. **N ROSE SHOW FLARED PLATE – GREEN (RARE AND DESIRABLE COLOR; MAY HAVE A SMALL ROUGH SPOT)**
404. N Rose Show Flared Plate – Lt. Amethyst (attractive item; nice irid.; small chip)
405. N Rose Show Flared Plate – Purple (another attractive item; nice irid.; may have a small chip)
406. N Rose Show Flared Plate – Blue (rare and attractive; nice irid.; may have a small chip)
407. **N ROSE SHOW 8 RUFFLED BOWL – AQUA OPAL. (RARE AND DESIRABLE; HAS SUPER PASTEL IRID.; GREAT OPAL.)**
408. **N ROSE SHOW 8 RUFFLED BOWL – LT. AQUA/ MARI. (PROBABLY ONE OF THE BEST EXAMPLES I'VE SEEN IN THIS COLOR)**
409. **N ROSE SHOW 8 RUFFLED BOWL – ICE GREEN (VERY RARE & VERY DESIRABLE; NICE IRID.)**
410. N Rose Show 8 Ruffled Bowl – Lt. Amethyst (nice color & irid.; tough to find)
411. N Rose Show 8 Ruffled Bowl – Amethyst (another nice example w/ great irid.)
412. N Rose Show 8 Ruffled Bowl – Dk. Mari. (very scarce w/ dark color & irid.)
413. **N LEAF AND BEADS FTD. ROSE BOWL – ICE BLUE (RARE & VERY DESIRABLE; NICE COLOR & IRID.)**
414. N Leaf and Beads ftd. Rose Bowl – Ice Blue (another rare & desirable item in this color)
415. **N LEAF AND BEADS FTD. ROSE BOWL – BUTTERSCOTCH AQUA OPAL. (EXCELLENT COLOR & IRID.; NICE BUTTERSCOTCH OVERLAY)**
416. N Leaf and Beads ftd. Rose Bowl – Aqua Opal. (very scarce & has a pastel finish)
417. N Leaf and Beads ftd. Rose Bowl – Aqua Opal. (another scarce pastel example)
418. N Leaf and Beads ftd. Rose Bowl – Purple (nice color)
419. 11 3/4" Tall N Four Pillars Swung Vase – Aqua Opal. (nice pastel item w/ a large flake on one foot)
420. **10 7/8" TALL N DIAMOND POINT SWUNG VASE W/ 12 RUFFLED TOP – AQUA OPAL. (RARE AND DESIRABLE; SORTA PASTEL; TOUGH TO FIND)**
421. **11" TALL N DIAMOND POINT SWUNG VASE W/ 6 RUFFLED TOP – ICE BLUE (VERY SCARCE W/ REALLY NICE IRID.)**
422. N Drapery 6 Ruffled Rose Bowl – Aqua Opal. (scarce item; sorta butterscotch)
423. N Drapery Tri-Cornered Candy Dish – Ice Blue (nice irid.; scarce)
424. 8 3/8" N Drapery Swung Vase – Ice Green (really nice color & irid.)
425. **N FINE CUT AND ROSES FTD. RUFFLED ROSE BOWL W/ FANCY INT. – AQUA OPAL. (RARE & DESIRABLE; NICE IRID.; CHIP ON ONE TOE)**
426. N Fine Cut and Roses ftd. Ruffled Rose Bowl w/ Fancy Int. – Ice Blue (scarce and desirable; nice irid.)
427. N Fine Cut and Roses ftd. Ruffled Rose Bowl w/ Fancy Int. – Ice Blue (a better example but has a chipped foot)
428. N Fine Cut and Roses ftd. 6 Ruffled Candy Dish w/ Fancy Int. – Aqua Opal. (very desirable; sorta butterscotch)
429. N Fine Cut and Roses ftd. 6 Ruffled Candy Dish w/ Fancy Int. – Ice Blue (nice irid.; very scarce)
430. **N ACORN BURRS 7 PC. WATER SET – GREEN (RARE AND DESIRABLE SET; WELL MATCHED)**
431. N Acorn Burrs Handled Punch Cup – Ice Blue (scarce; nice)
432. N Peach Tumbler – Blue (scarce)
433. **N ROUND HANDLED BUSHEL BASKET – AQUA OPAL. (NICE ITEM W. GREAT OPAL ON HANDLES)**
434. N Round Handled Bushel Basket – White (scarce; frosty)
435. **12 1/4" TALL N THIN RIB STANDARD SWUNG VASE – EMERALD GREEN (EXCELLENT IRID.; SUPER)**
436. **9 1/2" TALL N THIN RIB STANDARD SWUNG VASE – EMERALD GREEN (SUPER; GREAT IRID.)**
437. 10 1/2" Tall N Thin Rib Standard Swung Vase – Blue (nice color)
438. 10 1/4" Tall N Thin Rib Standard Swung Vase – Ice Blue (nice irid.)
439. **N WIDE PANEL 4 LILY EPERGNE – GREEN (VERY DESIRABLE; NICE COLOR; WELL MATCHED)**

440. N SPRINGTIME 7 PC. WATER SET – GREEN (RARE & VERY DESIRABLE; VERY TOUGH TO FIND)
441. N SPRINGTIME 6 PC TABLE SET – DK. MARI. (RARE & DESIRABLE SET; GREAT COLOR & IRID.)
442. 8 ¾" N SUNFLOWER 8 RUFFLED FTD. BOWL W/ MEANDER EXT. – BLUE/ ELEC. BLUE (EXCELLENT COLOR & IRID.; VERY RARE & NICE)
443. 8 ¾" N Sunflower 8 Ruffled ftd. Bowl w/ Meander Ext. – Amethyst (very attractive example)
444. 8 ¾" N Sunflower 8 Ruffled ftd. Bowl w/ Meander Ext. – Mari. (satiny finish)
445. N GREEK KEY 5 PC. TANKARD WATER SET – GREEN (VERY RARE SET; NICE COLOR AND OH SO TOUGH TO FIND)
446. N Greek Key Tumbler – Amethyst (nice color; scarce)
447. N ORIENTAL POPPY TANKARD WATER PITCHER – GREEN (VERY DESIRABLE; HAS EXCELLENT COLOR & IRID.)
448. N TORNADO SMALL SIZE TRI-CORNERED VASE – GREEN (RARE & DESIRABLE; NICE; HAS PINHEAD UNDER BASE)
449. N Ribbed ftd. J.I.P. Vase – Purple (scarce; nice satiny finish)
450. N GOOD LUCK 8 RUFFLED BOWL W/ RIBBED EXT. – AQUA OPAL. (EXCELLENT BUTTERSCOTCH EXAMPLE W/ GREAT IRID.)
451. N GOOD LUCK 8 RUFFLED BOWL W/ RIBBED EXT. – BLUE OPAL. (REALLY NICE PASTEL EXAMPLE; NICE IRID.)
452. N GOOD LUCK 8 RUFFLED BOWL W/ RIBBED EXT. – ELEC. BLUE (VERY NICE COLOR W/ BLUES AND REDS)
453. N Good Luck 8 Ruffled Bowl w/ Ribbed Ext. – Purple (very nice color w/ reds and golds)
454. N GOOD LUCK FLARED PLATE W/ RIBBED EXT. – DK. MARI. (ABSOLUTELY SUPER EXAMPLE; ONE OF THE BEST)
455. N GOOD LUCK STIPPLED BOWL W/ P.C.E. AND RIBBED EXT. – BLUE (REALLY NICE COLOR W/ BLUE HIGHLIGHTS)
456. N Good Luck Bowl w/ P.C.E. and Ribbed Ext. – Odd Green (odd tint; light irid.; small chip on base)
457. N Good Luck Bowl w/ P.C.E. and Ribbed Ext. – Purple (scarce; nice color & irid.)
458. N Good Luck Bowl w/ P.C.E. and Ribbed Ext. – Dk. Mari. (very scarce w/ dark color and irid.)
459. N Good Luck 8 Ruffled Bowl w. Basketweave Ext. – Green (nice satiny color & irid.; nice)
460. N Good Luck 8 Ruffled Bowl w. Basketweave Ext. – Green (another nice satiny example w/ nice irid.)
461. N Good Luck Bowl w/ P.C.E. and Basketweave Ext. – Mari. (scarce; nice color)
462. N POPPY SHOW FLARED PLATE – BLUE (RARE AND DESIRABLE; NICE EVEN IRID.)
463. N POPPY SHOW FLARED PLATE – DK. MARI. (VERY SCARCE & VERY DESIRABLE; NICE COLOR)
464. N POPPY SHOW 8 RUFFLED BOWL – BLUE (REALLY NICE EXAMPLE W/ IRID. THAT MATCHES THE PLATE)
465. N POPPY SHOW 8 RUFFLED BOWL – ICE BLUE (RARE AND DESIRABLE; NICE COLOR & IRID.)
466. N Poppy Show 8 Ruffled Bowl – White (scarce; frosty and nice)
467. N NIPPON 8 RUFFLED BOWL W/ BASKETWEAVE EXT. – PURPLE (REALLY NICE COLOR & EXCELLENT IRID.)
468. N Nippon 8 Ruffled Bowl w/ Basketweave Ext. – Green (very scarce; goldish highlights)
469. N BLOSSOMTIME STEMMED 6 RUFFLED COMPOTE – EMERALD GREEN (BEST I'VE SEEN IN THIS PATTERN)
470. N Blossomtime Stemmed 6 Ruffled Compote – Amethyst (very scarce; satiny)
471. N STRAWBERRY BOWL W/ P.C.E. AND PLAIN EXT. – PURPLE (VERY DESIRABLE; SUPER IRID.)
472. N Strawberry Bowl w/ P.C.E. and Basketweave Ext. – Amethyst (really nice irid.; very attractive)
473. N G&C Shot Glass – Purple (tough to find; nice)
474. N G&C Candlestick – Purple (scarce; nice irid.)
475. N G&C FTD. HATPIN HOLDER – EMERALD GREEN (VERY DESIRABLE; SUPER IRID.; REALLY NICE)
476. N G&C SMALL PIN TRAY – GREEN (VERY SCARCE COLOR FOR THIS ITEM; NICE)
477. N G&C LARGE DRESSER TRAY – GREEN (REALLY NICE EXAMPLE; HAS SUPER IRID.)
478. N G&C Cologne Bottle & Stopper – Green (very scarce color)
479. N G&C ftd. Hatpin Holder – Purple (scarce; really nice example)
480. N G&C VARIANT SMALL-SIZE RUFFLED PUNCH BOWL AND BASE – HOREHOUND (EXTREMELY RARE BASE COLOR FOR THIS VARIATION; REALLY NICE)
481. N G&C Small-Size Ruffled Punch Bowl and Base – Purple (nice dark color w/ nice irid.)
482. N G&C SMALL-SIZE PUNCH BASE ONLY – ICE GREEN (RARE PART; GREAT COLOR)
483. N G&C Handled Punch Cup – Ice Green (very scarce)
484. N G&C 7 pc Water Set – Purple (nice color & irid.; well matched)
485. N G&C VARIANT STIPPLED PLATE W/ RIBBED EXT. – SAPPHIRE (RARE; VERY DESIRABLE; SUPER PASTEL IRID.)
485. N G&C Variant Stippled Plate w/ Ribbed Ext. – Green (flat w/ an unusual yellow finish)
487. N G&C VARIANT STIPPLED BOWL W/ P.C.E. AND RIBBED EXT. – ELEC. BLUE (VERY SCARCE & VERY DESIRABLE; SUPER IRID.)
488. N G&C Bowl w/ P.C.E. and Plain Ext. – Purple (nice well matched irid.; attractive)
489. N G&C Large Ice Cream Bowl w/ Basketweave Ext. – White (very scarce w/ nice irid.; nice)
490. N G&C SPATULA FTD. PLATE W/ MEANDER EXT. – ICE GREEN (RARE & VERY DESIRABLE; GREAT COLOR & IRID.)
491. N G&C 4 ftd. Oval Banana Boat – Green (very scarce; sorta dark finish; nice)
492. N G&C Covered Handled Cracker Jar – Purple (great color – base sorta smoky/ lavender)
493. N G&C COVERED HANDLED CRACKER JAR – DK. MARI. (SUPER COLOR W/ SUPER IRID.)
494. N G&C Stippled Handled Bon Bon w/ Basketweave Ext. – Green (very scarce; great color & irid.)
495. N THREE FRUITS STIPPLED PLATE W/ RIBBED EXT. – BLUE (NICE AND FLAT W/ BLUE HIGHLIGHTS)
496. N THREE FRUITS FLARED PLATE W/ PLAIN EXT. – GREEN (SUPER IRID.; SORTA WANT TO BE EMERALD)
497. N Three Fruits Flared Plate w/ Plain Ext. – Amethyst (scarce w/ really nice irid.)
498. N Three Fruits 8 Ruffled Bowl w/ Plain Ext. – Green (nice irid.)
499. N THREE FRUITS MEDALLION SPATULA FTD. 8 RUFFLED BOWL W/ MEANDER EXT. – ICE GREEN (EXCELLENT EXAMPLE; GREAT COLOR W/ GREAT IRID.)
500. N THREE FRUITS MEDALLION STIPPLED SPATULA FTD. 8 RUFFLED BOWL W/ MEANDER EXT. – AQUA OPAL. (NICE PASTEL EXAMPLE; ATTRACTIVE)
501. N Three Fruits Medallion Spatula ftd. 8 Ruffled Bowl w/ Meander Ext. – Amethyst (has sorta smooth edge; great irid.)
502. N Three Fruits Medallion Spatula ftd. 8 Ruffled Bowl w/ Meander Ext. – Amethyst (really nice irid.)
503. N FRUITS AND FLOWERS STEMMED HANDLED BON BON W/ BASKETWEAVE EXT. – ICE GREEN (VERY SCARCE & VERY DESIRABLE; GREAT IRID.)
504. N Fruits and Flowers Stemmed Handled Bon Bon w/ Basketweave Ext. – Aqua Opal. (very scarce; nice color w/ opal on edge)
505. N Fruits and Flowers Stemmed Handled Bon Bon w/ Basketweave Ext. – Elec. Blue (super example; really nice)
506. N Memphis 8 pc. Ruffled Punch Set – Purple (cracked top; well matched)

DONALD DORAIS
150 HIGHLAND AVENUE
CUMBERLAND, RI 02864

BURNS

AUCTION SERVICE

First Class
US POSTAGE
PAID
MILLERSBURG
OH
PERMIT #6

Visit tomburnsauctions.com
for pictures and brochure. Auction
& Auction Flex Hibid available for
this auction.
Check us out on Auction Zip ID #29661.

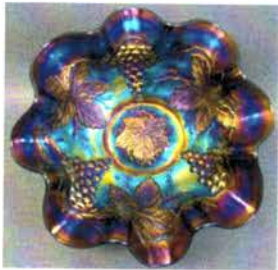
***** ALL FOR ADC 467
LEE MARKLEY
BOX 306
MENTONE IN 46539



LOT 235

9 - 588

CARNIVAL GLASS AUCTION FRI. & SAT., APRIL 7TH & 8TH, 2017



LOT 195



LOT 190



LOT 200



LOT 206



LOT 351



LOT 40



LOT 45



LOT 407



LOT 385



LOT 10



LOT 123



LOT 445