

SC. 27



SC. 10



SC. 51

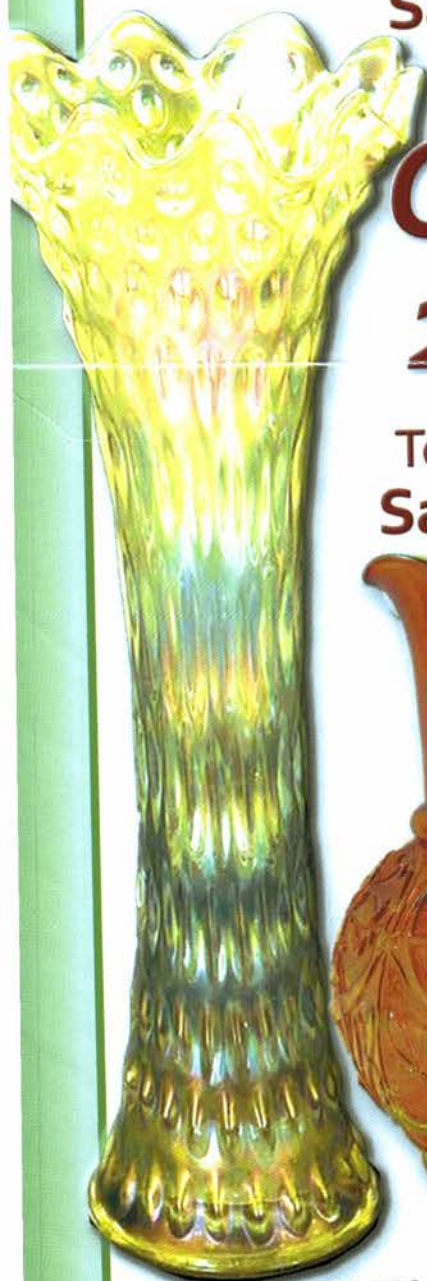
SC. 17

**So. California Carnival Glass Club Convention**  
**Saturday, March 11 9:30 a.m.**  
**Ontario, California**

# ***Carnival Glass*** ***2017 Auctions***

**Texas Carnival Glass Club Convention**  
**Saturday, March 18 9:30 a.m.**  
**Dallas, Texas**

TC. 246



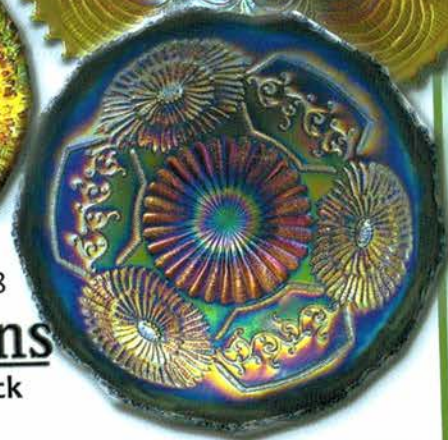
**Open to  
the Public**



TC. 175



TC. 128



TC. 34

TC. 112

**Seeck Auctions**  
**Jim & Jan Seeck**  
**641-424-1116**





Jim & Jan Seeck

**SATURDAY, MARCH 11, 2017 — 9:30 A.M.**

*Azure Hotel and Suites 1945 E. Holt Blvd.  
Ontario, California 91764*

641-424-1116

- ★ Online absentee bidding closes, Friday, March 10 at 9 pm CST  
 ☞ Judy & the late Ron Green Collection ☜

**SATURDAY, MARCH 18, 2017 — 9:30 A.M.**

*Wyndham Dallas Suites- Park Central  
7800 Alpha Road, Dallas, Texas 75240*

- ★ Online absentee bidding closes, Friday, March 17 at 9 pm CST  
 ☞ Ken and Chelle Chamberlain Collection ☜

ABSENTEE BIDDING is available on-line through Auction Flex using our online catalog at [www.seeckauction.com](http://www.seeckauction.com)  
**NO BUYER'S PREMIUM -- OPEN TO THE PUBLIC -- EMAIL: [jimjan@seeckauction.com](mailto:jimjan@seeckauction.com)**

**Lodging for the March 11 California auction**

If staying at the hotel, call direct (Press 0) for room reservations: 909-390-7778. Cutoff date for reservations is Feb. 22, 2017. **San Diego / So. Calif. Convention info:** Contact Contact Jeff Adams at 661-718-3831 or [jeffnadine@msn.com](mailto:jeffnadine@msn.com) **Club Website:** [www.socalcarnivalglassclub.com](http://www.socalcarnivalglassclub.com)

**Lodging for the March 18 Texas auction**

For hotel reservations, call Tequila Rainey (Monday-Friday between 8:30 am and 5:00 pm) at 972-233-7600 ext. 681. Let her know you are with the Texas Carnival Glass Association - March 2017. **Convention info:** Contact President Emmett Morgan at: 979-836-7896 **Club Website:** [www.texascarnivalglass.org](http://www.texascarnivalglass.org)

**Terms:** Cash or Check, VISA, MasterCard and Discover accepted w/proper ID. **4% Clerking Fee** on all purchases made using credit cards. Announcements made day of sale take precedence over any printed information.

**Sales Tax will be charged, please bring your tax-exempt numbers.**

### **We have 3 options for ABSENTEE BIDDING for our live auctions:**

- 1) **WRITTEN OR PHONE:** If you **DO NOT** have internet access or access to our website, you can: Call us by phone to enter your bids at (641) 424-1116 **OR** By sending the numbers of the item(s) desired and the amount bid on each to: Seeck Auctions, PO Box 377, Mason City, Iowa 50402. (The mail has not been very dependable. We would prefer you call us with your bids rather than send them in a letter.)
  - All written and called in bids will be entered into the online catalog by us.
  - **Written and Phone Absentee Deadline:** Have all bids in by **Wednesday, March 8 for the March 11 auction and Wednesday, March 15 for the March 18 auction.**
- 2) **ONLINE CATALOG:** Enter your bids from our website into our online catalog through the Auction Flex system. When you get to the online catalog, you will need to login as a bidder. For the first time you will need to **set up your account** by creating a user name and password. This will include filling out a form with your name, address, etc. You will also need to **register for the auction** which will ask you to enter a valid credit card number. This card will be validated by a \$1 charge to your card. This will only happen once and you will now be able to enter bids through our online catalog by just logging in with your user name and password. You will use this user name and password for all our auctions. You are not required to pay by credit card if you are successful. This is just a safeguard for us if someone does not pay. We will let you know what you owe us through an email and you can decide how you would like to pay us.
  - *An exciting advantage of entering your bids online yourself*, is the option to be notified by email if you are outbid on an item. You will know when you are outbid on an item and you can increase your bid on that item or bid on something else. **There will be a cutoff date and time for entering your bids online, generally at 9 p.m. the night before each live auction.** After this time has passed, you will not be able to enter your bids from our online catalog.
  - *Remember*, that just because you are the high bidder in the online catalog, this does not mean you have won the item. Your bid will still need to beat the floor bidders and live phone bidders. This system will run our absentee bids just as we did before. You will still be able to buy the item lower than your online bid unless someone on the floor bids you higher.
- 3) **LIVE PHONE BIDDING:** Available on pieces with an estimated sale price of \$500 or more. If you would like to participate in live phone bidding, contact us by **the Thursday before the auction, Mar. 9 for the first auction, and Thurs., March 16 for the second auction.** We will need to know the lot# and the phone number that you can be reached at on the day of the auction. We will also need your home phone number if different than the above number. Please call with questions: 641-424-1116.
  - **There is a \$7 handling charge for each successful bid. Shipping and insurance charges are additional.** bidders will be notified by phone/email if their bid(s) are successful. This will be done 1 - 3 days after the auction.
  - **If you do not receive an item that sold for less than your bid, assume we cancelled your bid because the item had a severe manufacture problem, damage or was not listed correctly.**

**BID INCREMENTS:** \$1 - \$100/\$5      \$100 - \$200/\$10      \$200 - \$700/\$25      \$700 - \$1,500/\$50  
 \$1,500 - \$3,000/\$100      \$3,000 - \$5,000/\$250      \$5000+ Auctioneer's Discretion



- 1. Thistle ruffled bowl - green
- 2. Top of the Morning and Dragonflies hatpins - dark
- 3. Fisherman's mug - purple
- 4. Beaded Stars rose bowl - marigold
- 5. Four Seventy Four milk pitcher - green
- 6. N's Grape Leaves 3 in 1 edge bowl - marigold - scarce with this edge
- 7. Curved Star flower holder - marigold - frog has a bruise on bottom edge
- 8. Persian Medallion rose bowl - marigold - dark, super
- 9. Jacobean Ranger 6 1/2" perfume bottle - marigold
- 10. **M'burg Big Fish ruffled bowl - green - radium, a super nice piece of glass**
- 11. Horse Medallion JIP ftd dish - amber - scarce color
- 12. Horse Medallion JIP ftd dish - green - scarce color
- 13. Horse Medallion JIP ftd dish - marigold - it sits on the small collar base, the feet are in the air
- 14. **Imperial Grape water pitcher - emerald green - very rare and beautiful pitcher**
- 15. Vertical Stars Panels (Nigh Watch) bonboniere - blue - Karhula, nick on underside of lid
- 16. Three Row Open Edge IC shaped bowl - celeste blue - rare bowl, nice
- 17. **Poppy Show 9" plate - green - scarce plate & very nice**
- 18. **Poppy Show 9" plate - ice green - scarce color, pretty**
- 19. **Poppy Show 9" plate - ice blue - pretty irid.**
- 20. **Poppy Show 9" plate - purple - super pretty, purchased at the Morgan auction**
- 21. Poppy Show 9" plate - blue - another very nice plate
- 22. Poppy Show 9" plate - marigold - very nice
- 23. Poppy Show 9" plate - white - pretty
- 24. Scroll Embossed small size ruffled compote - purple - dark & pretty
- 25. Scroll Embossed small size ruffled compote - lavender - pretty
- 26. Scroll Embossed small size ruffled compote - amber - scarce color, nice
- 27. **Persian Garden 10" IC shaped bowl - purple - very pretty, scarce & desirable**
- 28. Captive Rose IC shaped bowl - green - very unusual shape
- 29. **Peacocks ruffled bowl w/ribbed back - aqua opal - pastel & super!**
- 30. **Peacocks ruffled bowl w/ribbed back - purple - super**
- 31. **Concord 9" plate - amethyst - very highly desired and scarce pattern, nice**
- 32. Drapery 6 1/2" squatty vase - marigold - nice
- 33. **Hearts & Flowers 9" plate w/plain back - lime green - very rare color, minor heat check in base**
- 34. **Hearts & Flowers 9" plate w/ribbed back - purple - very pretty example, nice**
- 35. Pineapple & Fan 3 pc. tumble up set - marigold
- 36. **Grape Arbor 5 pc. tankard water set - ice blue - rare set, nice, one tumbler is towards the sapphire color**
- 37. **Floral & Optic ftd round bowl - purple - very rare color for these, super**
- 38. Stippled Grape & Cable ruffled bowl w/ribbed back - marigold - super pink & yellow irid.
- 39. **Victorian IC shaped bowl - purple - very nice, extremely rare in this shape**
- 40. Leaf & Beads rose bowl - aqua opal - nice
- 41. **Rose Show 9" plate - emerald green - very rare plate, nice**
- 42. **Rose Show 9" plate - ice green - scarce color, very pretty**
- 43. **Rose Show 9" plate - ice blue - super irid., small nick on rose**
- 44. Rose Show 9" plate - white - pretty
- 45. Rose Show 9" plate - blue - pretty, spot of epoxy on rose
- 46. Rose Show 9" plate - marigold - very nice
- 47. Imperial Grape 5 pc. wine set - purple - super pretty
- 48. Imperial Grape 7 pc. wine set - marigold - nice
- 49. Drapery Variant 9" bowl - marigold - Riihimaki, rare
- 50. **M'burg Ohio Star vase - green - super pretty & rare, a tiny nick on bottom edge of base, no harm**
- 51. **M'burg Ohio Star vase - marigold - super pretty irid., rare**
- 52. Strawberry PCE bowl w/plain back - green - very pretty
- 53. Wishbone & Spades 6" plate - purple - nice
- 54. **Good Luck ruffled bowl w/ribbed back - aqua opal - very rare bowl, has super opal**
- 55. **Good Luck ruffled bowl w/ribbed back - sapphire - very rare color, nice**
- 56. Good Luck ruffled bowl w/ribbed back - blue - electric
- 57. Loetz ? 6 1/2" vase - purple
- 58. **Fashion water pitcher - purple - super pretty example, scarce in this color**
- 59. Grapevine Lattice 6" plate - marigold
- 60. **N's Peacock at Urn master IC bowl - ice green - scarce, nice**
- 61. **N's Peacock at Urn master IC bowl - ice blue - nice**
- 62. N's Peacock at Urn master IC bowl - white - pretty irid.
- 63. N's Peacock at Urn master IC bowl - purple - nice
- 64. N's Peacock at Urn master IC bowl - marigold - pretty, heat check in collar base
- 65. **N's Peacock at Urn IC sauce - ice green - nice**
- 66. N's Peacock at Urn IC sauce - ice blue - pretty
- 67. N's Peacock at Urn IC sauce - white
- 68. N's Peacock at Urn IC sauce - purple
- 69. N's Peacock at Urn IC sauce - blue
- 70. **Imperial Grape 9" plate - purple - rare plate, fantastic example!**
- 71. Grada vase - blue - EDA
- 72. Grape & Cable humidor - purple - nice
- 73. Ski Star crimped edge banana boat shaped dome ftd bowl - peach opal - super!!
- 74. **M'burg Blackberry Wreath 7 pc. 3 in 1 edge berry set - purple - radium, neat set**
- 75. **Good Luck 9" plate w/BW back - green - scarce**
- 76. Good Luck 9" plate w/BW back - purple - scarce
- 77. Star & Fan cordial set w/under tray - marigold - scarce
- 78. Imperial Grape water carafe - purple - super pretty
- 79. **Stippled Peacocks 9" plate w/ribbed back - marigold - very pretty**
- 80. Pansy ruffled bowl - purple - pretty
- 81. **Poppy pickle dish - aqua opal - butterscotch, a pretty example, rare**
- 82. Wine & Roses 7 pc. cider set - marigold - neat set
- 83. **Horse Medallion 7" plate - powder blue - super example of this rare color**
- 84. Horse Medallion 7" plate - marigold
- 85. Starburst 5 1/2" vase - blue - Riihimaki, pinched in at waist
- 86. Starburst 5" vase - amber - Riihimaki, pinched in at neck, neat shape
- 87. **Stippled Grape & Cable Variant PCE bowl w/ribbed back - aqua opal - butterscotch & nice, rare color**
- 88. Thistle banana boat - blue - pretty, one bead on top edge has tiny spot of epoxy
- 89. **Stippled Three Fruits 9" plate w/ribbed back - aqua opal - super pretty plate, very scarce & highly desirable**
- 90. **Stippled Three Fruits 9" plate w/ribbed back - sapphire - rare color, nice**
- 91. **Stippled Three Fruits 9" plate w/ribbed back - blue - super pretty**
- 92. Stippled Three Fruits 9" plate w/ribbed back - marigold - another super pretty plate
- 93. Grecian 8" JIP vase - smoke - Stretch Glass
- 94. **Flowers & Frames dome ftd ruffled bowl - purple - fantastic!**
- 95. Drapery Variant 5" pitcher - marigold - pretty
- 96. Embroidered Mums ruffled bowl w/ribbed back - blue - very nice
- 97. Basketweave Open Edge ruffled basket - ice green
- 98. **Lions 7" plate - marigold - very nice example of this rare plate**



- \_\_\_ 99. Concave Diamonds 14 pc. water set - celeste blue - complete set with lid & coasters, one coaster has nick
- \_\_\_ **100. Butterfly & Tulip square shaped ftd bowl - purple - very rare & nice, a classic piece of Carnival Glass**
- \_\_\_ 101. Scroll Embossed lg size ruffled compote - marigold - dark, super
- \_\_\_ **102. Stag & Holly lg size IC shaped ftd bowl - blue - a rare radium version, fantastic!**
- \_\_\_ 103. Inverted Strawberry spittoon - marigold - rare item
- \_\_\_ 104. N's Bushel Basket - aqua opal
- \_\_\_ **105. Rustic 19 1/2" funeral vase - green - super pretty example for these**
- \_\_\_ **106. Rustic 18" funeral vase - blue - another super pretty vase, has flared out mouth 9" wide**
- \_\_\_ 107. Captive Rose CRE bowl - marigold
- \_\_\_ 108. Octagon 7 pc. wine set - marigold
- \_\_\_ **109. Imperial Flute water pitcher - purple - super pretty irid., quite rare**
- \_\_\_ **110. Flute #3 tumbler - blue - rare color**
- \_\_\_ 111. Flute #3 tumblers (2) - purple
- \_\_\_ 112. Four Flowers chop plate - peach opal - a great example
- \_\_\_ 113. Grape & Cable ruffled compote - purple - very nice
- \_\_\_ 114. Four Seventy Four cordial - marigold - a cute & scarce item
- \_\_\_ 115. Forty Niner cordial - marigold - very scarce
- \_\_\_ **116. M'burg Strawberry Wreath 10" crimped edge tri-cornered bowl - amethyst - radium, nice, rare shape**
- \_\_\_ 117. Bird & Grapes wall pocket - marigold
- \_\_\_ **118. Octagon 8 pc. wine set - purple - fantastic set, even the wines are nice, WOW!**
- \_\_\_ 119. Imperial Grape ruffled bowl - amber - nice
- \_\_\_ **120. Imperial Grape ruffled bowl w/leaf base - marigold - super pretty, very rare with leaf in base**
- \_\_\_ 121. Imperial Grape ruffled bowl - marigold
- \_\_\_ **122. Beaded Bullseye 13" vase - emerald green - super pretty, rare vase**
- \_\_\_ 123. Ruffled Rib square shaped spittoon - marigold - neat whimsy shape
- \_\_\_ 124. Loganberry vase - amber - nice
- \_\_\_ **125. Wishbone epergne - marigold - scarce & always desirable**
- \_\_\_ 126. Four Flowers 6" plate - purple - rare plate, nice
- \_\_\_ 127. Four Flowers 6" plate - peach opal
- \_\_\_ **128. Stag & Holly giant ftd rose bowl - blue - super example, very rare**
- \_\_\_ 129. Miller's Furniture advertising Basketweave Open Edge 2 sides up basket - marigold
- \_\_\_ **130. N's Peacock at Urn 6" plate - purple - very rare plate, not many around, nice**
- \_\_\_ **131. N's Peacock at Urn 6" plate - marigold - also very rare, nice**
- \_\_\_ 132. Orange Tree loving cup - amethyst - very scarce color
- \_\_\_ **133. Dragon & Strawberry IC shaped bowl - marigold - scarce bowl, nice**
- \_\_\_ 134. Grape & Cable sweetmeat - purple
- \_\_\_ 135. Luster Rose ftd centerpiece bowl - smoke - very pretty
- \_\_\_ 136. Hearts & Flowers ruffled compote - blue - very nice with electric highlights
- \_\_\_ 137. Stippled Grape & Cable 9" plate w/BW back - green - scarce, pretty
- \_\_\_ 138. Scroll Embossed ruffled sauce w/File back - purple
- \_\_\_ 139. Fenton perfumes (2) - marigold - one is perfect, one has chip on top edge and dabber has been replaced
- \_\_\_ **140. Peacock at the Fountain punch bowl & base - blue - very rare punch bowl, nice**
- \_\_\_ 141. Berry Bands and Ribs carafe, wine glass & tray - marigold - not sure if stopper is right, this is the tumble up bottom and the decanter tray
- \_\_\_ **142. M'burg Peacock master berry bowl - green - radium, pretty**
- \_\_\_ 143. M'burg Peacock berry sauces (2) - green - radium
- \_\_\_ **144. Golden Carp 10 1/2" oval tray - marigold - extremely rare item**
- \_\_\_ 145. Mikado IC shaped compote - blue - very pretty, chip on backside on leaf
- \_\_\_ 146. Woodlands miniature vase - marigold
- \_\_\_ **147. Lotus & Grape 9" plate - amethyst - hard plate to find**
- \_\_\_ 148. Daisy & Plume ftd rose bowl - purple - a few tiny pinpoints on ribs feet
- \_\_\_ 149. Daisy & Plume ftd rose bowl - marigold - small nick on rib of foot
- \_\_\_ **150. Morning Glory 18" funeral vase - purple - very pretty, scarce**
- \_\_\_ 151. Morning Glory 16" funeral vase - marigold - nice
- \_\_\_ 152. Luster Rose 8" ftd round bowl - purple - pretty
- \_\_\_ **153. Fenton Peacock at Urn 9" plate - marigold - nice**
- \_\_\_ 154. Strawberry 9" plate w/BW back - green - nice
- \_\_\_ 155. Beaded Cable rose bowl - aqua opal
- \_\_\_ **156. Peacocks PCE bowl w/ribbed back - emerald green - rare color for these, nice**
- \_\_\_ 157. Fishnet epergne - peach opal
- \_\_\_ **158. N's Town Pump - purple - a collector's favorite**
- \_\_\_ 159. Lions IC shaped bowl - marigold
- \_\_\_ **160. Grape & Cable small size 6 pc. punch set - purple - beautiful set**
- \_\_\_ 161. Basketweave Open Edge ruffled basket - red
- \_\_\_ **162. Daisy & Drape flared out vase - marigold - a beauty**
- \_\_\_ 163. Vintage small size epergne - amethyst - nice
- \_\_\_ **164. Grape & Cable candle lamp - marigold - scarce & desirable**
- \_\_\_ 165. Peacock at the Fountain 5 pc. berry set - blue - scarce color, nice set
- \_\_\_ 166. Stag & Holly 9" spt ftd plate - marigold - scarce, nice
- \_\_\_ 167. Flute & Cane tall milk pitcher - marigold
- \_\_\_ **168. Panther ftd ruffled master berry bowl - blue - super pretty, scarce**
- \_\_\_ 169. Stjarna bonboniere - blue - EDA, scarce
- \_\_\_ 170. Holly 9" plate - blue
- \_\_\_ 171. Basketweave Open Edge IC shaped bowl - celeste blue - scarce, nice
- \_\_\_ 172. Heavy Iris 7 pc. water set - marigold
- \_\_\_ **173. Stippled Good Luck 9" plate w/ribbed back - renninger blue - very rare plate & very pretty for these, tiny nick on top cleat of horseshoe**
- \_\_\_ 174. M'burg Cosmos low round sauce-green - radium, almost a plate
- \_\_\_ **175. N's Stippled Peacock at Urn master IC bowl - blue - scarce, nice**
- \_\_\_ 176. Triple Diamond tumble up w/under tray - marigold - scarce
- \_\_\_ **177. Hearts & Flowers ruffled bowl w/ribbed back - aqua opal - rare bowl, highly desirable**
- \_\_\_ 178. Holly & Berry ruffled bowl - purple - super, has stretchy type irid.
- \_\_\_ 179. Four Flowers Variant 9" plate - teal green - nice
- \_\_\_ 180. Lot of 6 N's Dandelion tumblers - purple - nice
- \_\_\_ 181. Grape & Cable candlesticks - green - nice
- \_\_\_ 182. Shell 9" plate - smoke - pretty, has nick on back edge
- \_\_\_ **183. M'burg Hobnail Swirl spittoon - marigold - scarce, nice**
- \_\_\_ 184. Dugan Cherries crimped edge 6" plate - purple - pretty
- \_\_\_ 185. Basketweave Open Edge lg size square basket - celeste blue - pretty irid., hard to find
- \_\_\_ 186. Starburst barrel shaped 5 1/4" vase - blue - Riihimaki, neat
- \_\_\_ 187. Starburst barrel shaped 5 1/4" vase - marigold - Riihimaki, nice
- \_\_\_ **188. Peacock at the Fountain fruit bowl - purple - scarce, desirable**
- \_\_\_ 189. Basketweave Open Edge JIP basket - red
- \_\_\_ 190. Basketweave Open Edge JIP basket - powder blue
- \_\_\_ **191. Embroidered Mums 9" plate w/ribbed back - ice green - rare & desirable**
- \_\_\_ 192. M'burg Peacock 6" plate - amethyst - satin, scarce
- \_\_\_ 193. Inverted Strawberry powder jar - marigold - scarce
- \_\_\_ **194. Flowers & Frames dome ftd crimped edge tri-cornered bowl - purple - super pretty**
- \_\_\_ 195. Plume Panels & Bows water pitcher - marigold - pretty
- \_\_\_ 196. Circle Scroll 8 1/2" vase - purple - scarce, nice
- \_\_\_ 197. Apple Blossom Twigs 3 in 1 edge bowl - peach opal



- \_\_\_ 198. M'burg Seaweed 10" 3 in 1 edge bowl - amethyst - satin
- \_\_\_ 199. Windmill ruffled bowl - marigold
- \_\_\_ **200. Peacocks 9" plate w/ribbed back - ice blue - scarce color, nice**
- \_\_\_ **201. Peacocks 9" plate w/plain back - green - scarce, nice**
- \_\_\_ **202. Peacocks 9" plate w//ribbed back - blue - has electric highlights, pretty**
- \_\_\_ **203. Peacocks 9" plate w/ribbed back - purple - super**
- \_\_\_ 204. Peacocks 9" plate w/ribbed back - lavender - scarce color
- \_\_\_ 205. Peacocks 9" plate w/ribbed back - ice green - nice
- \_\_\_ 206. Ripple 15" vase - purple - 3 7/8" base, nice
- \_\_\_ 207. Basketweave Open Edge IC shaped bowl - red - radium, maybe slightly turned in
- \_\_\_ 208. Wild Rose Open Edge ftd bowl - blue - tiny pinpoint on outside edge
- \_\_\_ **209. Grape & Cable 14 pc. master punch set - marigold - always in demand, chip on inside edge of bowl**
- \_\_\_ 210. Fenton's Fine Rib 9 1/2" vase - red - small repaired nick on base
- \_\_\_ 211. Grape & Cable spt ftd 9" plate - marigold
- \_\_\_ 212. Round Up 9" plate - blue
- \_\_\_ **213. Tornado Variant 6" vase - marigold - neat piece, quite scarce**
- \_\_\_ **214. Border Plants dome ftd handgrip plate - purple - super with stretchy irid.**
- \_\_\_ 215. Lot of 3 vases - marigold - two are 11" JIPs with etching
- \_\_\_ 216. Sunken Daisy ftd 7 1/2" bowl - blue - nick on side of foot, probably happened in making, rare size
- \_\_\_ 217. Grape & Cable Var. 9" ruffled bowl w/plain back - purple - nice
- \_\_\_ 218. Orange Tree 9" plate - blue
- \_\_\_ **219. Persian Garden 6" plate - purple - very scarce, nice**
- \_\_\_ 220. Three Fruit Medallion spt ftd ruffled bowl - green
- \_\_\_ 221. Good Luck PCE bowl w/ribbed back - blue
- \_\_\_ 222. Good Luck PCE bowl w/ribbed back - marigold - nice
- \_\_\_ **223. Question Mark dome ftd plate - white - very nice**
- \_\_\_ 224. Isaac Benesch & Sons advertising ruffled bowl - amethyst
- \_\_\_ 225. Rose Show Variant 9" plate - marigold - very scarce, very pretty
- \_\_\_ 226. Stretch Glass Dolphin fan vase - tangerine - scarce color
- \_\_\_ 227. Stretch Glass Dolphin fan vase - ice green
- \_\_\_ 228. Stretch Glass Dolphin fan vase - celeste blue
- \_\_\_ **229. Stippled Three Fruits Medallion spt ftd ruffled bowl - aqua opal - very nice**
- \_\_\_ 230. Floral & Grape JIP hat - marigold
- \_\_\_ 231. Star of David ruffled bowl - purple - nice
- \_\_\_ 232. Tree Trunk 7" squatty vase - marigold
- \_\_\_ 233. Concave Diamond tumbler - celeste blue
- \_\_\_ 234. Grape & Cable hatpin holder - green - chip on side of foot
- \_\_\_ 235. Grape & Cable shot glass - purple
- \_\_\_ 236. Swan salt - marigold
- \_\_\_ 237. Swan salt - ice green AND celeste blue
- \_\_\_ 238. N's Stippled Rays PCE 10" bowl - purple
- \_\_\_ **239. Brocaded Acorn 3 3/4" cordial - ice blue - very scarce**
- \_\_\_ 240. Colonial Loop cordial - marigold
- \_\_\_ 241. Miniature lamp - ruby flash
- \_\_\_ 242. Basketweave Open Edge 7" plate - green opal AND Stretch Glass 6" plate - vaseline
- \_\_\_ 243. Diamond Quilted spittoon with crimped edge - green - Loetz?
- \_\_\_ 244. Lot of 3 enameled cordials - marigold - minor pinpoint on base of tallest
- \_\_\_ 245. Hawaiian Dancer tumbler - marigold - not sure of correct name
- \_\_\_ **246. Rose Show ruffled bowl - aqua opal - pastel & pretty**
- \_\_\_ 247. Fashion rose bowl - marigold
- \_\_\_ 248. Rose Band cordial - marigold
- \_\_\_ **249. Poppy Show 9" plate - marigold - nice**
- \_\_\_ 250. Holly ruffled compotes - lime green AND marigold
- \_\_\_ 251. Grape & Cable 9" plate w/BW back - green - nice
- \_\_\_ 252. Kittens toothpick - blue - scarce color
- \_\_\_ 253. Lot of 3 cordials - marigold
- \_\_\_ 254. N's Peacock at Urn IC sauce - purple
- \_\_\_ 255. Heavy Iris tumbler - white - nice
- \_\_\_ **256. Pony 10 ruffled bowl - ice green - has stretchy irid., very nice, rare color**
- \_\_\_ 257. Stretch Glass Dolphin candlesticks - ice green
- \_\_\_ 258. Stretch Glass Dolphin compote - ice green - has Diamond Quilted interior
- \_\_\_ **259. N's Thin Rib midsize 15" vase - sapphire - rare, pretty**
- \_\_\_ 260. Lot of 5 cordials - marigold
- \_\_\_ 261. Butterfly & Tulip 2 sides up ftd bowl - marigold - nice, very minor nick on rib of foot
- \_\_\_ 262. Pair of Nine Sixteen 14" vases - blue
- \_\_\_ 263. Curled Rib 8" JIP vase - marigold
- \_\_\_ **264. Poppy Show ruffled bowl - pastel marigold - pretty irid.**
- \_\_\_ 265. Compote vase - amethyst
- \_\_\_ 266. Peacock at the Fountain tumbler - blue
- \_\_\_ **267. Peacocks ruffled bowl w/ribbed back - aqua opal - pastel & beautiful, from the Maxwell auction**
- \_\_\_ 268. April Showers 12" vase - marigold
- \_\_\_ 269. Fishscale & Beads 6" plate - white
- \_\_\_ 270. Lot of 5 pieces - marigold - wall pocket has repair
- \_\_\_ 271. Butterfly & Berry AND Robin tumblers - marigold
- \_\_\_ **272. M'burg Zig Zag square shaped crimped edge bowl - amethyst - radium, rare shape, fantastic**
- \_\_\_ 273. Fenton Regal Iris GWTW lamp - aqua opal - rare lamp, not many made, contemporary
- \_\_\_ 274. Large 11" Swan - blue - contemporary
- \_\_\_ 275. Swan cvd dish - blue - signed Westmoreland, contemporary
- \_\_\_ 276. Persian Medallion 9" plate - purple - signed Fenton, contemporary
- \_\_\_ 277. Dolphin ruffled compote - red - marked Fenton, contemporary
- \_\_\_ 278. 1991 Chessie Cat cvd candy dish - red - Fenton, contemporary
- \_\_\_ 279. Shell cvd dish w/dolphin feet - ice blue - Westmoreland, contemporary
- \_\_\_ 280. Lot of 4 Carnival Glass toothpicks - contemporary
- \_\_\_ 281. Peacock Garden vase - purple - #281 / 900, contemporary
- \_\_\_ 282. Good Luck 12" chop plate - aqua opal - signed Levey, contemporary
- \_\_\_ 283. Lot of 5 pieces contemporary Carnival Glass
- \_\_\_ 284. Lot of 5 cordials - non Carnival
- \_\_\_ 285. 1981 Inverted Strawberry toothpick whimsey - celeste blue - signed Terry Crider
- \_\_\_ 286. Tumbler - marigold - signed Terry Crider
- \_\_\_ 287. Daisy & Button 7 1/2" hdd basket - amethyst - signed Robert Hansen
- \_\_\_ 288. Gypsy Pot toothpick holder - red - unsigned Hansen
- \_\_\_ 289. Elephant toothpick - blue - signed Robert Hansen
- \_\_\_ 290. Santa Clause fairy lamp - red - signed Robert Hansen, rare piece
- \_\_\_ 291. Santa Clause fairy lamp - red - not iridized, this is the Fenton blank that Hansen used
- \_\_\_ 292. Honeycomb juice glass - red - unsigned Hansen
- \_\_\_ 293. Daisy & Button toothpick - amethyst - signed Robert Hansen
- \_\_\_ 294. Tree Stump toothpick - red - signed Robert Hansen
- \_\_\_ 295. Lady Shoe - red - signed Robert Hansen
- \_\_\_ 296. Daisy & Button shoe - red - unsigned Hansen
- \_\_\_ 297. Town Pump - marigold - signed Robert Hansen

**SATURDAY, MARCH 18, 2016 — 9:30 A.M.**

- \_\_\_ 1. Bullseye & Beads 8" vase - purple
- \_\_\_ 2. Bullseye & Beads 9" vase - amber - scarce color
- \_\_\_ 3. Bullseye & Beads 9" vase - marigold
- \_\_\_ 4. Six Forty Nine 10" candlesticks - celeste blue
- \_\_\_ 5. Starfish crimped edge ruffled compote - purple
- \_\_\_ 6. Windflower 9" plate - marigold
- \_\_\_ 7. Morning Glory 10 1/2" JIP vase - marigold
- \_\_\_ 8. Fern ruffled compote - green
- \_\_\_ 9. Grape & Cable sweetmeat whimsey - purple
- \_\_\_ **10. Dandelion tankard water pitcher - green - scarce color**



- 11. Dandelion 7 pc. tankard water set - purple - nice set
- 12. Dandelion tankard water pitcher - marigold - scarce
- 13. Basketweave Open Edge JIP basket - red
- 14. Basketweave Open Edge JIP basket - green - scarce color
- 15. Horse Medallion ftd ruffled bowl - green - scarce, nice
- 16. Horse Medallion ftd ruffled bowl - blue
- 17. Horse Medallion ftd ruffled bowl - marigold
- 18. Grape & Cable turned in centerpiece bowl - white - very scarce item, highly desirable
- 19. Grape & Cable turned in centerpiece bowl - green - super nice, very hard color to find
- 20. Grape & Cable turned in centerpiece bowl - purple - scarce
- 21. Grape & Cable turned in centerpiece bowl - marigold - nice
- 22. Parlor Panels 12 1/2" vase - purple
- 23. Parlor Panels 11" vase - marigold - nice
- 24. Miniature 7" Basket with Daisy - marigold - unique novelty
- 25. Persian Garden 11" IC shaped bowl - purple - very scarce, highly desirable
- 26. Ten Mums 10" ruffled bowl - green
- 27. Leaf Columns 6" squatty vase - green
- 28. Leaf Columns 6 1/2" squatty vase - marigold - nice
- 29. Peacocks 9" plate w/ribbed back - purple - scarce & desirable
- 30. Peacocks 9" plate w/ribbed back - lime green - scarce color
- 31. Peacocks 9" plate w/ribbed back - marigold - nice
- 32. Peacocks 9" plate w/ribbed back - white - very pretty irid.
- 33. Smooth Panels 11" vase - smoke - 4 3/8" base, neat vase, has 7 1/2" mouth
- 34. Wishbone 7 pc. water set - marigold - super pretty set, hard set to find
- 35. Thin Rib & Drape 4 3/4" miniature vase - green - scarce color
- 36. Thin Rib & Drape 5 3/4" miniature vase - marigold
- 37. M'burg Ohio Star vase - purple - very nice example, a dandy!
- 38. M'burg Strawberry ruffled compote - marigold - radium
- 39. Petal & Fan crimped edge sauce - purple - nice
- 40. Rose Show 9" plate - green - very scarce plate, good example
- 41. Rose Show 9" plate - white - pretty irid., small chip on rose
- 42. Wild Strawberry 7" handgrip plate - marigold
- 43. Fenton's Grape & Cable ruffled fruit bowl w/Persian Medallion interior - green - scarce color
- 44. Fenton's Grape & Cable ruffled fruit bowl w/Persian Medallion interior - amethyst - scarce color
- 45. Fenton's Grape & Cable ruffled fruit bowl w/Persian Medallion interior - blue
- 46. Fenton's Grape & Cable ruffled fruit bowl w/Persian Medallion interior - marigold - dark
- 47. Lily of the Valley tankard water pitcher - blue - extremely rare pitcher and highly desirable, beautiful shape
- 48. Circle Scroll JIP hat - marigold
- 49. Wishbone ftd ruffled bowl - ice blue - very scarce, nice
- 50. Wishbone ftd ruffled bowl - blue - scarce color
- 51. Wishbone ftd ruffled bowl - green
- 52. Wishbone ftd ruffled bowl - purple - nice
- 53. Wishbone ftd ruffled bowl - marigold
- 54. Australian Butterfly Bush and Xmas Bells round compote - dark or purple
- 55. Stag & Holly lg size deep ftd bowl - blue - nice
- 56. Stag & Holly lg size deep ftd bowl - marigold - dark
- 57. Dreibus Parfait Sweets 6" advertising plate - purple - very pretty for these
- 58. Freefold 10" vase - purple
- 59. Freefold 12" vase - smoke
- 60. Three Fruits Medallion spt ftd ruffled bowl - ice blue - scarce color & nice
- 61. Stippled Three Fruits Medallion spt ftd ruffled bowl - blue - also nice
- 62. Stippled Three Fruits Medallion spt ftd ruffled bowl - purple - nice
- 63. Stippled Three Fruits Medallion spt ftd ruffled bowl - marigold - nice
- 64. Grape & Gothic Arches 7 pc. water set - green - hard color to find
- 65. Imperial Grape water carafe - lavender - scarce
- 66. Imperial Grape water carafe - green
- 67. Imperial Grape water carafe - purple
- 68. Imperial Grape water carafe - marigold
- 69. Thistle banana boat shaped ftd bowl - green - scarce color, pretty
- 70. Thistle banana boat shaped ftd bowl - marigold
- 70a. Farmyard ruffled bowl - purple - chip on edge, scarce
- 71. Orange Tree 8 pc. round punch set - marigold
- 72. Orange Tree ruffled bowl - red - a brick color, scarce
- 73. Fruits & Flowers bonbon - blue - nice
- 74. Fruits & Flowers bonbon - green
- 75. Fruits & Flowers bonbon - marigold - pretty
- 76. Spector's Department Store / Heart & Vine 9" plate - marigold - super nice, very scarce
- 77. Harvest Poppy ruffled compote - purple
- 78. Harvest Poppy ruffled compote - marigold - nice
- 79. Hearts & Flowers ruffled bowl w/ribbed back - aqua - very scarce color for these, harder than the aqua opal
- 80. Hearts & Flowers ruffled bowl w/BW back - green - nice, scarce color
- 81. Hearts & Flowers ruffled bowl w/ribbed back - ice blue
- 82. Hearts & Flowers ruffled bowl w/ribbed back - marigold
- 83. Lined Lattice 9 1/2" vase - purple
- 84. Lined Lattice 9 1/2" vase - white - nice
- 85. Footed Lined Lattice 11" vase - marigold
- 86. Good Luck 9" plate w/BW back - horehound - very rare color
- 87. Good Luck 9" plate w/BW back - purple - scarce
- 88. Good Luck 9" plate w/BW back - marigold - tiny pinpoint on cleat
- 89. Diamond Lace 6 pc. water set - purple - pretty, tiny pinpoint has been slightly polished on edge of pitcher lip
- 90. Mae West 3 pc. console set - red - very scarce
- 91. Persian Medallion 9" plate - marigold - scarce
- 92. Nautilus whimsey creamer - purple
- 93. Australian Gum Tips 12" vase - marigold - 4 3/4" base, scarce, nice irid. for these
- 94. Fenton's Peacock at Urn 9" plate - blue - nice
- 95. Fenton's Peacock at Urn 9" plate - marigold
- 96. Drapery Variant 8 1/2" vase - blue - neat vase
- 97. US Glass #315 9 1/2" candlesticks - vaseline
- 98. N's Peacock at Urn master IC bowl - ice green - scarce, nice
- 99. N's Peacock at Urn master IC bowl - ice blue - pretty irid.
- 100. N's Peacock at Urn master IC bowl - white - pretty
- 101. N's Peacock at Urn master IC bowl - marigold
- 102. Butterfly & Fern water pitcher - green - scarce, nice
- 103. N's Bushel Basket - aqua opal - butterscotch, nice. light opal
- 104. N's Bushel Basket - green - scarce color
- 105. N's Bushel Basket - purple - nice
- 106. Zipper Loop 9" kerosene lamp - smoke - 5" base, very pretty
- 107. N's Dandelion Knight's Templar mug - marigold - nice
- 108. Good Luck PCE bowl w/ribbed back - blue - has electric highlights
- 109. Good Luck PCE bowl w/BW back - green - pretty, nick on cleat of horseshoe
- 110. Good Luck PCE bowl w/ribbed back - purple
- 111. Good Luck PCE bowl w/BW back - marigold
- 112. Rustic 20" funeral vase - white - very tall for these, nice
- 113. Rustic 20 1/2" funeral vase - amethyst - another rare vase, peeling on top point of vase
- 114. Rustic 22 1/2" funeral vase - marigold - about as tall as they get, stretched up!
- 115. Basketweave Open Edge IC shaped bowl - celeste blue
- 116. The Central Shoe Store advertising handgrip plate - purple - very scarce
- 117. Hearts & Flowers ruffled compote - purple



- \_\_\_ 118. Hearts & Flowers ruffled compote - marigold - super pretty
- \_\_\_ 119. Hearts & Flowers ruffled compote - white
- \_\_\_ 120. Grape & Cable hatpin holder - green - very nice example
- \_\_\_ 121. N's 3658 8 1/2" candlesticks - vaseline
- \_\_\_ 122. Peacocks ruffled bowl w/ribbed back - green - super pretty
- \_\_\_ 123. Peacocks ruffled bowl w/ribbed back - white - another pretty one, ruffled bowl is scarce in this color
- \_\_\_ 124. Peacocks ruffled bowl w/ribbed back - lavender - very nice
- \_\_\_ 125. Peacocks ruffled bowl w/ribbed back - blue - scarce
- \_\_\_ 126. Stippled Peacocks ruffled bowl w/ribbed back - marigold - nice
- \_\_\_ 127. Pinecone 6" plate - green - nice example
- \_\_\_ 128. Mikado IC shaped compote - blue - super pretty irid., this is a dandy!
- \_\_\_ 129. Mikado round compote - marigold
- \_\_\_ 130. Wishbone 10" PCE bowl - green
- \_\_\_ 131. N's Town Pump - purple - nice example of this classic piece, nick on knob of handle
- \_\_\_ 132. Zipper Loop 9" lamp - marigold - 5 1/8" base
- \_\_\_ 133. Zipper Loop 7" lamp - marigold - 3 7/8" base, this is the cute small size
- \_\_\_ 134. Oriental Poppy 7 pc. tankard water set - purple - scarce, pretty, small chip on top edge
- \_\_\_ 135. Oriental Poppy 7 pc. tankard water set - marigold - very nice
- \_\_\_ 136. Dragon & Lotus ruffled bowl - green
- \_\_\_ 137. Lattice & Poinsettia ftd ruffled bowl - blue - scarce
- \_\_\_ 138. Greek Key ruffled bowl w/BW back - green
- \_\_\_ 139. Leaf & Beads rose bowl - purple - nice
- \_\_\_ 140. Leaf & Beads rose bowl - green - nice
- \_\_\_ 141. Leaf & Beads rose bowl - marigold - dark
- \_\_\_ 142. Orange Tree loving cup - marigold
- \_\_\_ 143. N's Thin Rib 13" midsize vase - green
- \_\_\_ 144. Cambridge or Fostoria compote - red - has iridescence inside bowl, only the second one I've seen
- \_\_\_ 145. Springtime 7 pc. water set - marigold - scarce set
- \_\_\_ 146. Nippon PCE bowl w/ribbed back - ice blue
- \_\_\_ 147. Nippon PCE bowl w/BW back - white
- \_\_\_ 148. Nippon PCE bowl w/BW back - green - 2 no harm pinpoints on base
- \_\_\_ 149. Holly 9" plate - green - nice
- \_\_\_ 150. Holly 9" plate - blue
- \_\_\_ 151. Holly 9" plate - marigold
- \_\_\_ 152. Daisy & Drape turned in vase - amethyst - super pretty, some may call lavender
- \_\_\_ 153. Daisy & Drape turned in vase - marigold
- \_\_\_ 154. Daisy & Drape turned in vase - white
- \_\_\_ 155. Fanciful 9" plate - peach opal - pretty
- \_\_\_ 156. Field Flower water pitcher - green
- \_\_\_ 157. Grape & Cable cvd compote - purple - nice
- \_\_\_ 158. Many Fruits 8 pc. punch set - marigold - one cup has nick on base
- \_\_\_ 159. Rose Show ruffled bowl - green - very scarce color
- \_\_\_ 160. Rose Show ruffled bowl - marigold - pretty
- \_\_\_ 161. Stippled Three Fruits 9" plate w/ribbed back - blue
- \_\_\_ 162. Stippled Three Fruits 9" plate w/ribbed back - purple
- \_\_\_ 163. Stippled Three Fruits 9" plate w/ribbed back - marigold
- \_\_\_ 164. Nautilus whimsey open sugar - peach opal
- \_\_\_ 165. Nautilus whimsey creamer - peach opal
- \_\_\_ 166. Orange Tree 9" plate - blue
- \_\_\_ 167. Orange Tree 9" plate - white
- \_\_\_ 168. Orange Tree 9" plate - marigold
- \_\_\_ 169. Rustic 12 1/2" midsize vase - amethyst
- \_\_\_ 170. Rustic 12 1/2" midsize vase - green
- \_\_\_ 171. Good Luck ruffled bowl w/BW back - green
- \_\_\_ 172. Good Luck ruffled bowl w/ribbed back - purple - super pretty, minor pinpoint on cleat of horseshoe
- \_\_\_ 173. Good Luck ruffled bowl w/ribbed back - blue - has electric highlights
- \_\_\_ 174. Good Luck ruffled bowl w/BW back - marigold
- \_\_\_ 175. Australian Butterfly Bush small size round compote - marigold
- \_\_\_ 175a. Petal Eyed Owl hatpin - amber - very rare hatpin, nice
- \_\_\_ 175b. Diamond Back Beetle hatpin - dark - another rare hatpin, nice
- \_\_\_ 175c. Loetz type hatpin - dark - very unusual and neat hatpin
- \_\_\_ 175d. Hearts & Cross hatpin - dark - scarce
- \_\_\_ 175e. Grape hatpin - lavender - scarce
- \_\_\_ 175f. Grape hatpin - green - scarce
- \_\_\_ 175g. Onion Sphere hatpin - dark - have not seen this one before
- \_\_\_ 175h. Turban hatpin - dark
- \_\_\_ 175i. Top of the Morning hatpin - dark
- \_\_\_ 175j. Border Path hatpin - dark
- \_\_\_ 175k. Basketflower hatpin - dark
- \_\_\_ 175l. Lot of 3 Moire Beetle hatpins - dark - one has purple irid., one silver irid. and one goldish irid.
- \_\_\_ 175m. Lot of 4 Rooster hatpins with black backgrounds - amber, red, amethyst and light blue
- \_\_\_ 175n. Lot of 3 Rooster hatpins with black backgrounds - green, white and blue
- \_\_\_ 176. Basketweave Open Edge 2 sides up basket - reverse amberina opal, very slight opal
- \_\_\_ 177. Basketweave Open Edge 2 sides up basket - aqua
- \_\_\_ 178. Basketweave Open Edge 2 sides up basket - lime green
- \_\_\_ 179. Stippled Peacocks 9" plate w/ribbed back - blue - scarce
- \_\_\_ 180. M'burg Hobnail Swirl rose bowl - marigold
- \_\_\_ 181. Tree Trunk 12" midsize vase w/plunger base - purple - scarce shape
- \_\_\_ 182. Rose Garden 9" vase - marigold
- \_\_\_ 183. Fern Brand Chocolates advertising handgrip plate - purple
- \_\_\_ 184. Wishbone & Spades 6" plate - peach opal - scarce
- \_\_\_ 185. Fanciful IC shaped bowl - amethyst - nice
- \_\_\_ 186. Persian Medallion ruffled compote - marigold - dark, nice
- \_\_\_ 187. Wishbone ftd 9" plate - purple - nice
- \_\_\_ 188. Peacocks PCE bowl w/ribbed back - green - scarce color
- \_\_\_ 189. Peacocks PCE bowl w/ribbed back - purple
- \_\_\_ 190. Peacocks PCE bowl w/ribbed back - marigold
- \_\_\_ 191. Ripple 10" vase - purple - 3 7/8" base
- \_\_\_ 192. Cut Ovals 10 1/2" candlesticks - marigold - rare set
- \_\_\_ 193. Good Luck 9" plate w/ribbed back - blue - very rare plate, super pretty
- \_\_\_ 194. Tree Trunk 11" midsize vase - purple
- \_\_\_ 195. Captive Rose 9" plate - marigold - nice
- \_\_\_ 196. Grape & Cable 7 pc. water set - purple
- \_\_\_ 197. Grape & Cable 7 pc. water set - marigold
- \_\_\_ 198. Garden Mums handgrip plate - amethyst - nice
- \_\_\_ 199. Fisherman's mug - marigold
- \_\_\_ 200. Grape Arbor hatshape - white
- \_\_\_ 201. N's Peacock at Urn IC sauce - ice green - nice
- \_\_\_ 202. N's Peacock at Urn IC sauce - ice blue
- \_\_\_ 203. N's Peacock at Urn IC sauce - white
- \_\_\_ 204. N's Peacock at Urn IC sauce - marigold
- \_\_\_ 205. Isaac Benesch and Sons advertising ruffled bowl - amethyst
- \_\_\_ 206. Raspberry 7 pc. water set - purple - nice set
- \_\_\_ 207. Raspberry 5 pc. water set - marigold
- \_\_\_ 208. Grape & Cable whiskey decanter - purple - scarce
- \_\_\_ 209. Grape & Cable whiskey decanter - marigold - very minor nick on top edge where stopper fits
- \_\_\_ 210. Grape & Cable shot glass - marigold - nice
- \_\_\_ 211. M'burg Nesting Swan ruffled bowl - amethyst - radium, pinpoints on edge
- \_\_\_ 212. Grape & Cable 4 pc. table set - green - spooner has nick on base, butter bottom has pinpoint on base, creamer has mold roughness on base
- \_\_\_ 213. Ripple 17 1/2" funeral vase - marigold - nice
- \_\_\_ 214. Holly JIP CRE hat - red
- \_\_\_ 215. Dandelion mug - green - scarce color



SEECK AUCTIONS  
P.O. BOX 377  
MASON CITY, IA 50401

PRESORTED  
FIRST CLASS MAIL  
US POSTAGE  
PAID  
MAIL EXPEDITORS

TC. 47



**2017 CARNIVAL  
GLASS AUCTIONS**

Sat., March 11  
Ontario, Cal.  
Sat., March 18  
Dallas, Texas

T2 P1 129  
LEE MARKLEY  
BOX 306  
MENTONE IN 46539-0306



- \_\_\_ 216. Dandelion mug - blue - nick on base
- \_\_\_ 217. Dandelion mug - marigold
- \_\_\_ 218. Concave Flute 8" vase - aqua - Westmoreland, nice
- \_\_\_ **219. N's Stippled Peacock at Urn master IC bowl - marigold - scarce**
- \_\_\_ 220. Stippled Grape & Cable Variant ruffled bowl w/ribbed back - green
- \_\_\_ 221. Panther ftd ruffled sauce - red - cherry red color w/nice irid.
- \_\_\_ 222. Australian Kookaburra ruffled sauce - marigold
- \_\_\_ **223. Peacock at the Fountain 7 pc. water set - marigold - pretty set, one tumbler has chip**
- \_\_\_ 224. Grape & Cable candlesticks - green - scarce
- \_\_\_ 225. Grape & Cable candlesticks - marigold
- \_\_\_ **226. Tornado lg size vase - green - scarce**
- \_\_\_ 227. Kittens cup & saucer - marigold
- \_\_\_ 228. Grape & Cable open compote - purple - scarce
- \_\_\_ 229. Grape & Cable open compote - marigold
- \_\_\_ 230. Grape & Cable cologne bottle - purple
- \_\_\_ 231. Grape & Cable cologne bottle - marigold
- \_\_\_ 232. Imperial Flute 4 1/2" vase - white - 6 1/2" mouth, has Imperial Cross mark
- \_\_\_ **233. Embroidered Mums ruffled bowl w/ribbed back - purple**
- \_\_\_ 234. Embroidered Mums ruffled bowl w/ribbed back - marigold
- \_\_\_ 235. Honeycomb & Beads crimped edge tri-cornered dish - purple - very pretty
- \_\_\_ 236. Eat Paradise Sodas advertising 6" plate - amethyst

- \_\_\_ **237. Stippled Grape & Cable 9" plate w/ribbed back - purple - very scarce when stippled**
- \_\_\_ 238. Concord ruffled bowl - marigold
- \_\_\_ **239. Singing Birds 7 pc. water set - green - nice**
- \_\_\_ 240. Singing Birds 7 pc. water set - marigold - scarce
- \_\_\_ 241. Imperial Grape wine bottle - purple - nice
- \_\_\_ 242. Imperial Grape wine bottle - marigold - nice
- \_\_\_ **243. Amaryllis ftd plate - purple - super**
- \_\_\_ 244. M'burg Primrose ruffled bowl - green - radium, pretty, small chip on back of point, chip on face
- \_\_\_ 245. M'burg Primrose ruffled bowl - amethyst - radium
- \_\_\_ **246. Nippon 9" plate w/BW back - green - super pretty, very scarce**
- \_\_\_ **247. Nippon 9" plate w/BW back - marigold - another scarce plate**
- \_\_\_ 248. Box Lots

TC. 272

