

BURNS

AUCTION SERVICE
2017

TAMPA BAY CARNIVAL GLASS CONVENTION AUCTION

SATURDAY, FEBRUARY 11th at 9:30 A.M.

Preview:

Friday evening, February 10th after banquet

Saturday, February 11th at 8:00 a.m.

DOLPHIN BEACH RESORT

4900 Gulf Blvd, St. Pete Beach, FL 33706

800-237-8916 or 727-360-7011

www.dolphinbeach.com

For more information, call/write Tom Burns

183 Sunnyside Drive, Clermont, FL 3471

Florida License #AU3768

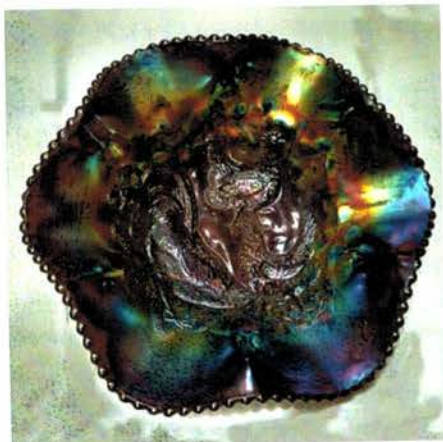
William Richards III Auctioneer, Florida License #AU1621



Lot 275



Lot 100



Lot 30A



Lot 300



Lot 190

Hoping all had a wonderful Holiday Season and we welcome you to 2017. We'll be cranking up the New Year starting with the 2017 Tampa Bay Carnival Glass Club Convention to be held from February 8th through the 11th in St. Pete Beach, Florida.

This year we will be selling a great selection of glass from the collection of Gary and Sharon Vandevander from West Virginia. Gary loves weird items and has put together a very interesting collection with a number of odd and unusual pieces. Many of the items in this auction appear in the 12th Edition of the "Standard Encyclopedia of Carnival Glass" book by Mike Carwile. Their specialty was miniatures and I did manage to snag quite a few. He deserves the spotlight that the Tampa Bay Convention can shine on him and we're hoping you really enjoy his glass.

The Dolphin Beach Resort will host this event once again. They're located on the Gulf of Mexico at 4900 Gulf Blvd., St. Pete Beach, Florida and you can call for reservations at 1-800-237-8916 or 1-727-360-7011; www.dolphinbeach.com The room rates vary from \$105-\$155 depending on your view preference.

This has been a great Carnival Glass get together for a number of years and will continue to be with a seminar by Gary Lickver on Thursday, the "Alligator Crawl", Banquet, as well as the auction...a good time for all who want to escape the winters' wrath – hope to see ya there.

At this time we will hopefully be on track to offer live internet bidding as well as our normal internet and mail bidding. Keep an eye on our NEW website for further information. (<http://www.tomburnsauctions.com>)

Absentee Bidding: Absentee bidding is available via our "Auction Flex" bidding system. You can also email us (glassmantom@gmail.com) or call in your absentee bids (407-592-6552). Items will be shipped after payment is received. All mailings will carry a minimum \$5 handling charge towards packaging supplies. We reserve the right to cancel ANY bid for ANY reason. We will cancel all bids on an item if damage is found during the auction. **We reserve the right to withdraw any damaged item from the auction before bidding starts.**

Terms and conditions: Cash, Travelers checks, business or personal checks with I.D. Visa, MasterCard, American Express and Discover with a 4% clerking fee. Live bidding fee of 10% buyers premium will be in effect once it begins.

- | | | | |
|---------|--|---------|---|
| ___ 1. | Pair (Maker ?) Diamond and Fan w/ Washboard Panels Salt and Pepper Shakers – Dk. Mari. (very scarce & desirable pair; great irid.) | ___ 16. | (MAKER ?) COVERED FROG NOVELTY – LT. MARI. (RARE AND VERY DESIRABLE...ANOTHER FROG!!) |
| ___ 2. | PAIR CHALLINOR BEADED OVAL MIRROR SALT & PEPPER SHAKERS– (1) MARI. (1) PURPLE (RARE & DESIRABLE PAIR; NICE) | ___ 17. | (MAKER ?) COVERED FROG NOVELTY – GREY/ BLUE FLASH (WAIT!...ANOTHER ONE?!; GREAT COLOR & RARE!) |
| ___ 3. | (MAKER ?) SHELL AND SEAWEED SALT SHAKER – MARIGOLD OPAL. (VERY RARE SINGLE SALT; GREAT COLOR & OPAL.) | ___ 18. | (MAKER ?) COVERED FROG NOVELTY – AMETHYST FLASH (A FOURTH FROG THAT'S AS RARE AS ANY OF 'EM) |
| ___ 4. | Pair "Made in U.S.A." Broken Ring Salt and Pepper Shakers – Mari. (rare pattern; nice) | ___ 19. | CENTRAL GLASS CO. COVERED ELEPHANT – AMETHYST FLASH (EXTREMELY RARE PACHYDERM; GREAT COLOR) |
| ___ 5. | PAIR IMPERIAL OCTAGON SALT AND PEPPER SHAKERS – MARI. (ACTUALLY QUITE A RARE PAIR; REALLY NICE) | ___ 20. | 7" X 7 1/2" DUGAN WESTERN DAISY DOMED 4-SIDED BOWL – EMERALD GREEN (EXTREMELY RARE COLOR; SUPER SHAPE AND IRID.; NICE!!) |
| ___ 6. | PAIR CHALLINOR CROSSROADS DOUBLE SALT AND PEPPER SHAKERS – (1) RED (1) GREEN (EXTREMELY RARE PAIR; SUPER ITEM; ON COVER OF CARWILE'S CARNIVAL BOOK) | ___ 21. | DUGAN SINGLE FLOWER DAISY RUFFLED HANDLED BASKET – P. OPAL. (VERY RARE ITEM; HAS UNUSUAL OPAQUE HANDLE) |
| ___ 7. | (Maker ?) Fantail Mini-Shaker 3 pc. set – Mari. (rare set; great color) | ___ 22. | Dugan Rays Interior/ Jeweled Heart Ext. Crimped Edge Basket – P. Opal. (very scarce item w/ great opal.) |
| ___ 8. | Pair (Maker ?) Pattern (?) Salt and Pepper Shakers with enameled décor – Lt. Mari. (not sure of pattern; but I sure haven't seen 'em) | ___ 23. | DUGAN CAROLINE 2-SIDED HANDLED BASKET – LT. AMETHYST OPAL. (NOTATED IN CARL BURNS' DUGAN BOOK AS ONLY EXAMPLE) |
| ___ 9. | LIBBEY MAIZE SALT SHAKER – LT. MARI. (VERY RARE ITEM; NICE COLOR ..TOUGH) | ___ 24. | 11 3/4" Tall Dugan Spiralex Tall Swung Vase – Purple (super example; great color) |
| ___ 10. | LIBBEY MAIZE CONDIMENT JAR – LT. MARI. (ANOTHER RARELY SEEN ITEM!) | ___ 25. | 10 1/4" TALL DUGAN BIG BASKETWEAVE SWUNG VASE – PURPLE (SUPER, SUPER EXAMPLE; GREAT IRID.) |
| ___ 11. | Westmoreland Wild Berry Covered Powder Jar – Mari. (rare w/ the lid; tough to find) | ___ 26. | 11 1/2" TALL DUGAN BIG BASKETWEAVE SWUNG VASE – PURPLE (ANOTHER SUPER EXAMPLE; GREAT COLOR) |
| ___ 12. | U.S. Glass Banded Portland Covered Dresser Jar – Mari. (an extremely rare novelty item; nice irid.) | ___ 27. | 11" TALL DUGAN BIG BASKETWEAVE SWUNG VASE – ICE BLUE (RARE AND VERY DESIRABLE COLOR & IRID.; NICE) |
| ___ 13. | "U.S. Glass Co. Pittsburgh, PA." Paperweight w/ lady – Crystal/ Frosted (rare and very desirable item) | ___ 28. | 8 3/4" Dugan Fanciful Flared Plate – White (super irid.) |
| ___ 14. | "U.S. Glass Co. Pittsburgh, PA." Paperweight w/ lady – Crystal/ Frosted (another rare and desirable item; different ladies) | ___ 29. | 9 1/4" Dugan Fanciful 10 Ruffled Bowl – White (frosty w/ average irid.) |
| ___ 15. | (MAKER ?) COVERED FROG NOVELTY – ICE GREEN (VERY RARE AND VERY DESIRABLE; WE ALL LOVE FROGS) | ___ 30. | DUGAN HARVEST FLOWER 5 PC. TANKARD WATER SET – MARI. (EXTREMELY RARE DUGAN WATER SET; PERFECT!!) |

- 30A. **DUGAN FARMYARD LG. 6 RUFFLE BOWL W/ JEWELED HEART EXT. – PURPLE (RARE, DESIRABLE WITH GREAT MULTI-COLORED IRIDESCENCE)**
31. 7" Dugan Fishscale and Beads Flared Plate – White (super irid.; nice !)
32. 9 1/2" Dugan Round Up Flared Plate – White (another Dugan item w/ excellent irid.)
33. **8 3/4" DUGAN APPLE BLOSSOM TWIG 10 RUFFLED BOWL – PURPLE (SUPER, SUPER COLOR & IRID.)**
34. 9" Dugan Apple Blossom Twig Flared Plate – White (super irid.)
35. **9" DUGAN DOUBLE STEM ROSE DOMED FLARED BOWL / PLATE – ICE BLUE (EXTREMELY RARE BASE COLOR FOR THIS ITEM; USUALLY CELESTE BLUE)**
36. **9" DUGAN DOUBLE STEM ROSE DOMED FLARED BOWL / PLATE – PURPLE (SUPER IRID.; VERY DESIRABLE)**
37. 9 1/4" Dugan Double Stem Rose domed Flared Plate – White (super irid.)
38. **9 1/8" DUGAN FLOWERS AND FRAMES DOMED 10 RUFFLED BOWL – PURPLE (ABSOLUTELY WONDERFUL EXAMPLE; EXCELLENT!)**
39. 7 3/4" Square Dugan Four Flowers Bowl w/ Plain Ext. – Blue (unusual item; rare color; rare shape; fair irid.)
40. **9" DUGAN VINTAGE GRAPE DOMED 8 RUFFLED BOWL – CELESTE BLUE (EXTREMELY RARE COLOR FOR THIS ITEM; REALLY NICE EXAMPLE)**
41. **10 1/2" DUGAN GARDEN PATH VARIANT LOW ICE CREAM BOWL W/ SODA GOLD EXT. – WHITE (EXCELLENT ITEM W/ FANTASTIC IRID.)**
42. **11" DUGAN HEAVY GRAPE LG. 6 RUFFLED BOWL W. COMPASS EXT. – P. OPAL (VERY RARE; NICE OPAL & OVERLAY)**
43. 5" Tall x 5" Diam. Dugan Lined Lattice Squatty Swung Vase – P. Opal. (desirable size; nice)
44. 5" Tall x 5" Diam. Dugan Lined Lattice Squatty Swung Vase – Mari. (a rare color in this desirable shape)
45. **DUGAN FORMAL J.I.P. FTD. VASE – PURPLE (RARE ITEM; ONE OF THE BEST EXAMPLES I'VE SEEN)**
46. **DUGAN TWIGS BEAUTY BUD VASE W/ J.I.P. EDGE – PURPLE (RARE SHAPE; DESIRABLE & NICE)**
47. **DUGAN TWIGS BEAUTY BUD VASE W/ TRI-CORNERED TOP – PURPLE (VERY SCARCE AND DESIRABLE; NICE)**
48. **DUGAN MARY ANN 3-HANDLED LOVING CUP – MARI. (VERY RARE NOVELTY ITEM W/ GREAT DETAIL)**
49. Dugan Mary Ann 3-Handled Loving Cup – Mari./ Pink (very rare base color; unfortunate check in handle)
50. **3" TALL DUGAN STIPPLED ESTATE MINI TRI-CORNERED VASE – P. OPAL. (EXTREMELY DESIRABLE MINIATURE; GREAT EXAMPLE)**
51. **4 1/4" TALL DUGAN ESTATE MINI TRI-CORNERED VASE – P. OPAL. (RARE & VERY DESIRABLE OPAL. ITEM; HAVEN'T SEEN ANOTHER)**
52. **DUGAN FISHERMAN'S MUG – P. OPAL. (RARE; REALLY NICE EXAMPLE)**
53. Dugan Fisherman's Mug – Purple (nice item)
54. Dugan Fisherman's Mug – Mari. (super example)
55. **7 7/8" DUGAN GRAPEVINE LATTICE FLAT PLATE – PURPLE (VERY DESIRABLE; SUPER IRID.; ENAM. "SOUVENIR SHADY FORK, W.VA.")**
56. **6 1/2" DUGAN WISHBONE AND SPADES FLAT PLATE – PURPLE (VERY DESIRABLE; SUPER)**
57. Dugan Amaryllis Tri-Cornered Miniature Compote – Purple (rare item w/ a satiny finish)
58. Dugan Heavy Iris J.I.P. Hat – White (rare shape; super irid.)
59. Dugan Grapevine Lattice J.I.P. Hat – White (rare shape; super irid.; Enam. "Souvenir Easton, Wis.")
60. Dugan Christmas Compote – Purple (rare item but has a chip on edge of base)
61. 7 3/4" Dugan Six Petals Tri-Cornered Bowl – Purple (super color & irid.)
62. 6" Tall Dugan Stippled Estate Lg. Tri-Cornered Vase – Aqua (scarce; odd item)
63. Phoenix Lacy Dewdrop Handled Water Pitcher – Mari./ Milk Glass (rare item w/ a nice marigold overlay)
64. U.S. Glass Palm Beach Handled Water Pitcher – White (rare w/ super frosty finish & irid.; nice)
65. **U.S. GLASS STAR PAPERWEIGHT – LT. MARI. (FROM SPANGLER COLLECTION; THE ORIGINAL & RARE)**
66. **U.S. GLASS MASSACHUSETTS HANDLED TRI-CORNERED NAPPY – GREEN (EXTREMELY RARE ONE OF A KIND ITEM; ODD & UNUSUAL)**
67. **CAMBRIDGE (?) INDIAN TOMAHAWK – BLUE (EXTREMELY RARE W/ EXCELLENT IRID.; NICE)**
68. **ARGENTINIAN REGAL CANE MANTEL CLOCK – MARI. (EXTREMELY RARE ITEM; UNUSUAL & REALLY NEAT)**
69. **SOWERBY ROYAL SWAN MASTER SALT – DK. MARI. (ANOTHER REALLY TOUGH NOVELTY; SUPER RARE ITEM)**
70. **ARGENTINA BLOSSOM COVERED INKWELL – AMETHYST (ONE OF MY FAVORITE ITEMS IN THE AUCTION, WOW!)**
71. **CRISTALERIAS RIGOLLEAU SCARAB ASHTRAY – MARI. (RARE COLOR FOR THIS DESIRABLE ITEM; NICE COLOR)**
72. **(MAKER ?) EUROPEAN HEART HANDLED DOUBLE SALT DIP – MARI. (VERY RARE & VERY DESIRABLE ITEM; REALLY NEAT)**
73. **(MAKER ?) EUROPEAN INVERTED DIAMONDS DOUBLE SALT DIP – MARI. (VERY RARE AND ANOTHER DESIRABLE ITEM)**
74. **5 1/4" TALL RIIHIMAKI KARELIA SWEET MINI-VASE – BLUE (EXTREMELY RARE PATTERN – SUPER IRID.)**
75. **8" TALL (MAKER ?) 6-SIDED DRAGON VASE – BLUE (ANOTHER RARE AND TOUGH ITEM; HAS A FLAKE ON TOP EDGE)**
76. **6" TALL (MAKER ?) BELLFLOWER SQUARE TOPPED VASE – BLUE (SAME MAKER AS THE DRAGON VASE; RARER)**
77. 5-6" Brockowitz (Eda) Rose Garden Letter Style Vase – Mari. (very desirable size w/ really nice color)

- ___ 78. Finlandish Tartan (Daisy & Cane) Spittoon Shaped Vase – Dk. Mari. (rare & desirable; nice color & irid.)
- ___ 79. **7-8" TALL ICCARDO JEWELED PEACOCK TAIL BULBOUS VASE – BLUE (REALLY RARE AND VERY DESIRABLE; TOUGH TO FIND)**
- ___ 80. **(MAKER ?) ROSE PINWHEEL BOWL – DK. MARI. (EXTREMELY RARE ITEM; GREAT COLOR AND REALLY TOUGH TO FIND)**
- ___ 81. Pair Cambridge Inverted Strawberry Candleholders – Green (rare pair; chips at base of both)
- ___ 82. **CAMBRIDGE COLOGNE BOTTLE AND STOPPER – MARI. (EXTREMELY RARE COLOR; SOOOO RARE!)**
- ___ 83. **CAMBRIDGE SMALL-SIZE BUZZ SAW CRUET AND STOPPER – MARI. (ANOTHER RARE MARIGOLD ITEM; SO TOUGH TO FIND)**
- ___ 84. **CAMBRIDGE LARGE-SIZE BUZZ SAW CRUET AND STOPPER – MARI. (RARE COLOR & REALLY NICE!)**
- ___ 85. **CAMBRIDGE INVERTED FEATHER LG. HANDLED BON BON WHIMSEY FROM CRACKER JAR BASE – GREEN (ONE OF THE RAREST OF CAMBRIDGE ITEMS; ONLY ONE REPORTED)**
- ___ 86. Cambridge Inverted Feather Covered Cracker Jar – Green (scarce item; nice color)
- ___ 87. **CAMBRIDGE COLOGNE BOTTLE AND STOPPER – GREEN (RARE & VERY COLLECTIBLE; GREAT COLOR)**
- ___ 88. Cambridge Small-size Buzz Saw Cruet and Stopper – Green (very scarce and always desirable)
- ___ 89. Cambridge Large-size Buzz Saw Cruet and Stopper – Green (actually quite a tough item to find)
- ___ 90. **6 1/2" M'BURG HANGING CHERRIES FLAT PLATE – DK. MARI. (VERY RARE; FLAT W/ AN EXCELLENT SATINY FINISH)**
- ___ 91. **5 3/4" M'BURG SEAWEED ICE CREAM SHAPED SAUCE – MARI. (RARE, RARE; RADIUM AND DARK; SO VERY TOUGH)**
- ___ 91A. **M'BURG HANGING CHERRIES ICE CREAM SHAPED SAUCE W/ HOBNAIL EXT. – BLUE (VERY RARE & TERRIBLY DESIRABLE)**
- ___ 92. 5 1/4" M'burg Holly Sprig Deep Flared ind. Berry Bowl – Amethyst (radium; very scarce; super nice)
- ___ 93. 5 1/4" M'burg Holly Sprig Deep Flared ind. Berry Bowl – Green (another super item w/ excellent radium irid.)
- ___ 94. 5" M'burg Holly Sprig Deep Flared ind. Berry Bowl – Mari. (the 3rd example w/ excellent irid. – nice!!)
- ___ 95. **M'BURG HOBSTAR AND FEATHER HEART SHAPED NAPPY – MARI. (RARE PART OF THE PLAYING CARD SET – NICE!)**
- ___ 96. **M'BURG HOBSTAR AND FEATHER DIAMOND SHAPED NAPPY – MARI. (ANOTHER RARE CARD SET ITEM; TOUGH TO FIND)**
- ___ 97. 5 3/8" M'burg Peacock ind. Flared Berry Bowl – Amethyst (radium; desirable)
- ___ 98. 6 1/2" M'burg Holly Sprig Tri-Cornered Bowl – Amethyst (radium & really nice)
- ___ 99. 7" M'burg Holly Sprig Tri-Cornered Bowl – Mari. (another nice radium item)
- ___ 100. **M'BURG POTPOURRI HANDLED MILK PITCHER – AMETHYST (NEWLY FOUND M'BURG RARITY; RADIUM AND ABSOLUTELY ONE OF THE BEST!!)**
- ___ 101. **M'BURG SEACOAST PIN TRAY – AMETHYST (RARE; NICE; A VERY POPULAR ITEM!)**
- ___ 102. **M'BURG SUNFLOWER PIN TRAY – AMETHYST (RARE; A VERY DESIRABLE ITEM W/ NICE COLOR)**
- ___ 103. **M'BURG SEACOAST PIN TRAY – GREEN (RARE; ALWAYS DESIRABLE)**
- ___ 104. **M'BURG SUNFLOWER PIN TRAY – GREEN (ANOTHER TOUGH ITEM; NICE COLOR & IRID.)**
- ___ 105. **7 1/2" M'BURG 1910 DETROIT B.P.O.E. ELKS 6 RUFFLED BOWL – AMETHYST (A BEAUTIFUL RADIUM EXAMPLE W/ EXCELLENT DETAIL & IRID.)**
- ___ 106. **7 1/2" M'BURG LETTERED COURTHOUSE 6 RUFFLED BOWL – AMETHYST (RADIUM W/ EXCELLENT IRID.; VERY POPULAR ITEM)**
- ___ 107. **9 1/2" M'BURG ZIG ZAG TRI-CORNERED CRIMPED EDGE BOWL – AMETHYST (RADIUM AND VERY DESIRABLE; SUPER IRID.)**
- ___ 108. 6" M'burg Strawberry Wreath 6 Ruffled Sauce – Green (super radium finish with blue highlights)
- ___ 109. **M'BURG STRAWBERRY WREATH 6 RUFFLED COMPOTE – GREEN (ANOTHER RADIUM ITEM W/ SUPER BLUE IRID.)**
- ___ 110. **6 1/2" M'BURG TROUT AND FLY 4-SIDED SQUARE BOWL – MARI. (RARE W/ SATINY FINISH IN A RARE SHAPE)**
- ___ 111. **8 3/4" M'BURG TROUT AND FLY ICE CREAM SHAPED BOWL – GREEN (EXCELLENT SATINY FINISH; GREAT DETAIL)**
- ___ 112. 9 1/2" M'burg Fleur de Lis Ice Cream Shaped Bowl – Mari. (radium & very desirable)
- ___ 113. 7" M'burg Holly Sprig 4-sided Square Bowl – Mari. (scarce shape; has a radium finish)
- ___ 114. 10" M'burg Rays and Ribbons Bowl w/ 3 in 1 Edge – Mari. (radium example)
- ___ 115. **9 5/8" M'BURG HOLLY WHIRL 6 RUFFLED BOWL – GREEN (SUPER RADIUM EXAMPLE W/ BLUE HIGHLIGHTS)**
- ___ 116. **M'BURG LEAF AND LITTLE FLOWERS STEMMED 6 RUFFLED COMPOTE – GREEN (RADIUM FINISH; DESIRABLE)**
- ___ 117. M'burg Leaf and Little Flowers Stemmed Flared Compote – Mari. (satiny flared example)
- ___ 118. **LANCASTER (?) CREOLE LG. GIANT FTD. ROSE BOWL – MARI. (UNUSUAL ITEM; HAVEN'T SEEN MANY)**
- ___ 119. **(MAKER ?) LARGE FISH BOTTLE – DK. MARI. (REALLY UNUSUAL; SUPER EXAMPLE)**
- ___ 120. **11" X 13" IMPERIAL ZIPPER HEART LG. RUFFLED "QUEENS VASE" – DK. MARI. (A MASSIVE ITEM; TERRIBLY RARE; GREAT COLOR AND IRID.)**
- ___ 121. **IMPERIAL COLONIAL LADY 8 RUFFLED VASE – MARI. (RARE COLOR THAT'S VERY DESIRABLE; NICE)**
- ___ 122. **IMPERIAL THUMBPRINT AND OVALS 6 RUFFLED VASE – DK. MARI. (VERY SCARCE; NICE DARK COLOR & IRID.)**
- ___ 123. 5 1/2" Imperial Embossed Scroll Deep Round Bowl w/ Hobstar and Tassel Ext. – Mari. (really rare item in a rare shape)

- ___124. Imperial Grape 8 pc. Wine Set – Pastel Mari. (scarce set w/ excellent irid.)
- ___125. **IMPERIAL GRAPE 7 PC. WATER SET – PURPLE (SUPER COLOR & IRID.; WELL MATCHED AND A BEAUT!)**
- ___126. Imperial Grape Stemmed Goblet – Purple (very scarce; nice)
- ___127. Imperial Grape Water Carafe – Purple (super color & irid.; really nice)
- ___128. Imperial Grape Wine Decanter & Stopper – Purple (super color & really nice irid.)
- ___129. **IMPERIAL GRAPE WINE DECANter & STOPPER – AMBER (EXTREMELY RARE COLOR FOR THIS ITEM; NEAT!!)**
- ___130. **9" IMPERIAL GRAPE FLARED PLATE – PURPLE (ABSOLUTELY FANTASTIC EXAMPLE; GREAT IRID.)**
- ___131. 6 ¼" Imperial Grape Flat Plate – Purple (super color w/ bright yellow highlights)
- ___132. **IMPERIAL COLONIAL LADY 4 RUFFLED VASE – PURPLE (RARE AND A BEAUTY; NICE COLOR & IRID.)**
- ___133. **IMPERIAL THUMBPRINT AND OVALS 6 RUFFLED VASE – PURPLE (SUPER COLOR & IRID.; REALLY NICE EXAMPLE)**
- ___134. 5 ¾" Imperial Plain Interior/ Hobstar and Tassel Ext. Deep Round Bowl – Purple (rare item; nice)
- ___135. **10" IMPERIAL HATTIE FLARED CHOP PLATE – PURPLE (RARE AND EXTREMELY DESIRABLE; GREAT COLOR, IRID., AND IT'S PERFECT!)**
- ___136. **IMPERIAL HOMESTEAD FLAT CHOP PLATE – NOT SIGNED – PURPLE (RARE AND ALWAYS DESIRABLE; MAY HAVE A PINHEAD AT 6:00)**
- ___137. 8" Imperial Heavy Grape Flat Plate – Purple (super color & irid.)
- ___138. 8" Imperial Heavy Grape Flat Plate – Amber (super color & irid.)
- ___139. 6" Imperial Heavy Grape Deep Round Bowl – Purple (super irid.)
- ___140. **IMPERIAL CHATELAINE HANDLED WATER PITCHER – PURPLE (RARE; GREAT COLOR & IRID.; MINOR MANUF. PEELING ON BASE)**
- ___141. **(2) IMPERIAL CHATELAINE TUMBLERS – PURPLE (SELLING CHOICE; GREAT IRID. AND NICE)**
- ___142. Imperial Diamond Lace 7 pc. Water Set – Purple (super set; well matched)
- ___143. 12 ¼" Imperial Freefold Swung Vase – Purple (super irid.)
- ___144. 12" Imperial Ripple Swung vase – Purple (super irid.)
- ___145. **IMPERIAL WIDE PANEL PENNY MATCH HOLDER – PURPLE (EXTREMELY DESIRABLE MINI-ITEM; PERFECT W/ GREAT COLOR)**
- ___146. **IMPERIAL EMBOSSED SCROLL MINI 6 RUFFLED COMPOTE – PURPLE (VERY DESIRABLE ITEM; GREAT IRID.)**
- ___147. **3" TALL X 3 1/8" DIAM. IMPERIAL MINIATURE MORNING GLORY SQUATTY VASE – DK. MARI. (VERY COLLECTIBLE; WE ALL WOULD LIKE ONE!)**
- ___148. 6" Tall x 4 ½" Diam. Imperial Miniature Morning Glory Flared Vase – Smoke (scarce; super irid.)
- ___149. 5" Tall x 3/ ½" Diam. Imperial Miniature Morning Glory Flared Vase – Purple (super irid.; nice)
- ___150. **4 ¼" TALL X 5 5/8" DIAM. IMPERIAL PARLOR PANELS SQUATTY 6 RUFFLED VASE – PASTEL MARI. (VERY RARE SHAPE & SIZE W/ GREAT IRID.)**
- ___151. **6 ¼" TALL X 6 ¾" DIAM. IMPERIAL PARLOR PANELS SQUATTY FLARED VASE – DARK SMOKE (SUPER GRAY TINTED EXAMPLE; GREAT SHAPE)**
- ___152. 11 ½" Tall Imperial Parlor Panels Swung Vase – Pastel Mari. (super irid.)
- ___153. **IMPERIAL CORN BOTTLE – SMOKE (VERY SCARCE W/ EXCELLENT IRID.; NICE!)**
- ___154. **4 ¼" TALL X 7" DIAM. IMPERIAL 474 FTD. 8 RUFFLED COMPOTE – PURPLE (NOW...HOW MANY OF THESE HAVE YOU SEEN?)**
- ___155. **5 ¾" TALL IMPERIAL MINIATURE MORNING GLORY AND DRAPE SWUNG VASE – PURPLE (VERY DESIRABLE W/ SUPER IRID.)**
- ___156. **6" TALL IMPERIAL MINIATURE MORNING GLORY AND DRAPE SWUNG VASE – PURPLE (ANOTHER SUPER EXAMPLE W/ GREAT COLOR)**
- ___157. 5 ½" Imperial Miniature Morning Glory and Drape Swung Vase – Green (rare and underpriced; nice)
- ___158. 5 ½" Imperial Miniature Morning Glory and Drape Swung Vase – Dk. Mari. (great color & irid.)
- ___159. 10 ¼" Imperial Acanthus Flat Plate – Mari. (flat w/ excellent irid.)
- ___160. **PAIR IMPERIAL CRUCIFIX CANDLEHOLDERS – SMOKE (EXTREMELY RARE PAIR; SUPER IRID.; ONLY PAIR KNOWN IN THIS COLOR; CHIP ON BACK OF ONE)**
- ___161. **PAIR IMPERIAL CRUCIFIX CANDLEHOLDERS – DK. MARI. (SUPER PAIR; GREAT COLOR AND IRID.)**
- ___162. **IMPERIAL LOGANBERRY VASE – AMBER (EXCELLENT EXAMPLE; A GREAT SHOWY PIECE)**
- ___163. **8 5/8" IMPERIAL STAR OF DAVID 8 RUFFLED BOWL – PURPLE (SUPER EXAMPLE; EXCELLENT)**
- ___164. 7 ¾" Imperial Shell and Sand 8 Ruffled Bowl – Purple (super color & irid.)
- ___165. **IMPERIAL TIGER LILY HAT SHAPED WHIMSEY FROM TUMBLER – GREEN (NOW THIS IS A COOL ITEM; GREAT SHAPE FOR THIS ITEM)**
- ___166. **12" TALL X 4 3/8" BASE IMPERIAL STRETCH INTERIOR PANELS MID-SIZE SWUNG VASE – TEAL (REALLY NICE SIZE & COLOR – VERY DESIRABLE)**
- ___167. **5" TALL X 5" DIAM. X 2 ½" BASE IMPERIAL STRETCH INTERIOR PANELS MINI SWUNG VASE – TEAL (CUTE; SMALL SIZE WITH GREAT COLOR)**
- ___168. **4 ½" TALL X 5 ¼" DIAM. X 2 ½" BASE IMPERIAL INTERIOR PANELS SQUATTY FLARED VASE – MARI./ MILK GLASS (DARK OVERLAY AND VERY DESIRABLE)**
- ___169. 4 ¾" Tall x 5 1/8" Diam. x 2 ½" Base Imperial Interior Panels Squatty Flared Vase – Lt. Mari./ Milk Glass (another like above; only with lighter overlay)
- ___170. **IMPERIAL LITTLE BARREL PERFUME – GREEN (SCARCE; NICE COLOR)**
- ___171. Imperial Little Barrel Perfume – Dk. Mari. (super)
- ___172. Imperial Summer Gardens Stemmed Flared Compote – Clear/ Irid. (very scarce; has super irid.)



Lot 2



Lot 3



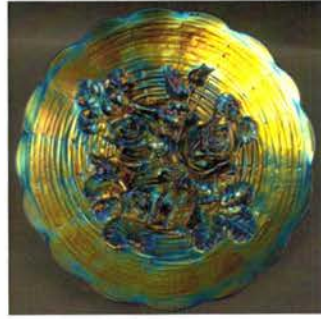
Lot 66



Lot 340



Lot 19



Lot 325



Lot 46



Lot 36



Lot 90



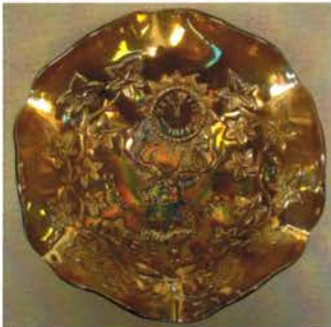
Lot 85



Lot 55



Lot 35



Lot 105



Lot 253



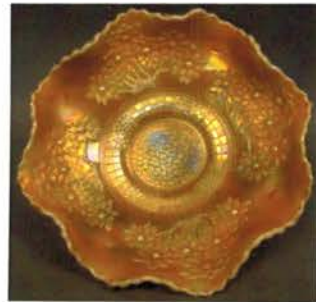
Lot 30



Lot 75



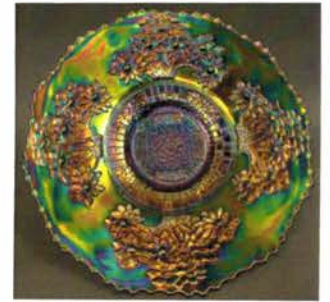
Lot 118



Lot 195



Lot 216



Lot 196



Lot 341



Lot 67



Lot 9



Lot 6



Lot 38



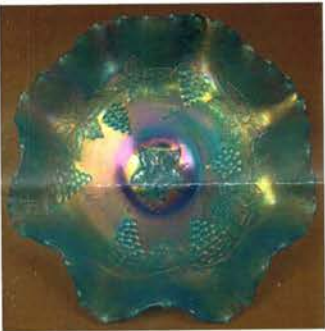
Lot 47



Lot 345



Lot 18



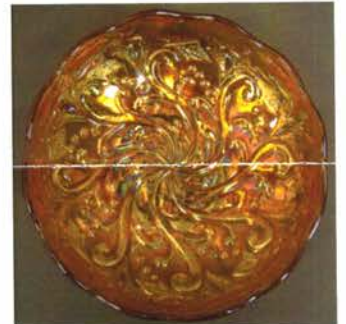
Lot 40



Lot 56



Lot 70



Lot 91



Lot 76



Lot 265



Lot 320



Lot 106



Lot 203



Lot 217



Lot 240



Lot 120

- ___ 173. Imperial Summer Gardens Ice Bucket and Handle – Clear Irid. (very scarce w/ excellent irid.)
- ___ 174. Fostoria Brocaded Palms Lg. Ice Bucket, Handle and Tongs – Pink Irid. (rare & desirable; nice color; complete w/ tongs)
- ___ 175. **NOVELTY COVERED FROG – SIGNED “VALLERYSTHEL” – MILK GLASS (MORE FROGS!!!...PLAIN MILK GLASS, BUT SIGNED)**
- ___ 176. Novelty Covered Frog – Crystal Frosted (another rare frog and unfortunately the last of the auction)
- ___ 177. European Milady Covered Powder Jar – Mari. (scarce; underpriced)
- ___ 178. (Maker ?) Sunburst Perfume Bottle and Stopper – Dk. Mari. (great color & quite rare)
- ___ 179. Made in U.S.A. Sailboat Ashtray w/ aluminum sail – Lt. Mari. (really neat item; complete w/ original sail)
- ___ 180. **WESTMORELAND INTAGLIO FLOWER FTD. ALMOND CUP – BLUE OPAL. (EXTREMELY RARE MINIATURE ITEM W/ NICE COLOR & OPAL.)**
- ___ 181. **WESTMORELAND INTAGLIO FLOWER FTD. ALMOND CUP – MARI. (RARE & DESIRABLE ITEM W/ NICE COLOR AND DETAIL)**
- ___ 182. **4” WESTMORELAND INTAGLIO MINIATURE FLOWER BASKET FLARED PLATE – P. OPAL. (RARE ITEM; ONLY A FEW OF THESE ARE KNOWN; PEELING ON EDGE)**
- ___ 183. **3 ½” WESTMORELAND INTAGLIO MINIATURE FLOWER BASKET MINI 4-SIDED SAUCE W/ WIRE HANDLE – P. OPAL. (RARE; REALLY NICE OPAL.)**
- ___ 184. **WESTMORELAND ESTATE HANDLED MUG – BLUE OPAL. (VERY RARE COLOR)**
- ___ 185. **WESTMORELAND SHELL NOVELTY CANDY DISH – P. OPAL. (EXTREMELY RARE EXAMPLE; GREAT COLOR & OPAL.)**
- ___ 186. **10” TALL PAIR DUNCAN MILLER MARDI GRAS FLARED VASES – LT. MARI. (ETCHED “SUPERIOR BATH HOUSE - HOT SPRINGS, ARK. 1901”)**
- ___ 187. **9 ½” EUROPEAN PODS AND POSIES FLAT PLATE – GREEN (RARE PLATE; SUPER COLOR & IRID.)**
- ___ 188. **DIAMOND GLASS CO. PANELED COVERED CANDY JAR – RED (RARE ITEM; HAS GOLDISH IRID.)**
- ___ 189. 4 ¼” Fenton Stretch Mini Cupped Rose Bowl – Red (cute item in this color)
- ___ 190. **11 5/8” FENTON ORANGE TREE LG. FTD. CENTERPIECE BOWL – EMERALD GREEN (EXTREMELY RARE COLOR; SUPER IRID.; NICE)**
- ___ 191. Fenton Orange Tree Handled Loving Cup – Green (very scarce; nice color and perfect)
- ___ 192. Fenton Orange Tree Handled Loving Cup – Blue (very scarce; nice color & irid.)
- ___ 193. Fenton Orange Tree Handled Loving Cup – White (a bit lighter in color; pretty nice irid.)
- ___ 194. **FENTON ORANGE TREE HANDLED LOVING CUP – DK. MARI. (ABSOLUTELY SUPER COLOR & IRID.)**
- ___ 195. **9” FENTON ORANGE TREE 8 RUFFLED BOWL – MARI./ MOONSTONE (VERY RARE ITEM; GREAT COLOR & IRID.; REALLY NICE)**
- ___ 196. **9 ½” FENTON ORANGE TREE W/ TRUNK FLAT PLATE – BLUE (EXCELLENT ITEM W/ BRIGHT MULTI-COLORED IRID.)**
- ___ 197. 9 ½” Fenton Leaf Chain Flat Plate – White (scarce; super irid.)
- ___ 198. 8 ½” Fenton Peacock and Grape 8 Ruffled Bowl – P. Opal. (opal on edge; really nice irid.)
- ___ 199. 8 ¾” Fenton Coral 8 Ruffled Bowl – Dk. Mari. (very scarce; super example)
- ___ 200. **10” FENTON FANTAIL LG. FLARED FTD. CHOP PLATE – DK. MARI. (VERY RARE & EXTREMELY DESIRABLE; GREAT COLOR & IRID.)**
- ___ 201. **9 ½” FENTON PEACOCK AND GRAPE FLARED PLATE – DK. MARI. (VERY SCARCE & VERY UNDERPRICED !!)**
- ___ 202. 9 ¼” Fenton Peacock at the Urn Flat Plate – Dk. Mari. (scarce w/ really nice color and irid.)
- ___ 203. **9 5/8” FENTON HOLLY FLARED PLATE – BLUE (SUPER MULTI-COLORED IRID. – REALLY NICE)**
- ___ 204. 10” Fenton Holly Flat Plate – Dk. Mari. (remember... this measures 10 inches)
- ___ 205. **7 ½” FENTON 1914 B.P.O.E. PARKERSBURG ELKS FLARED PLATE – BLUE (VERY RARE & EXTREMELY DESIRABLE – GREAT COLOR)**
- ___ 206. **FENTON 1914 B.P.O.E. PARKERSBURG ELKS HANDLED BELL – BLUE (ANOTHER RARE & VERY DESIRABLE ITEM; GREAT IRID. AND DETAIL)**
- ___ 207. **8” FENTON “ILLINOIS SOLDIERS AND SAILORS HOME, QUINCY, ILL” FLAT PLATE – DK. MARI. (RARE & SUPER IRID.; NICE!)**
- ___ 208. **7 ¾” FENTON LIONS FLAT PLATE – MARI. (RARE; GREAT DETAIL & SOOO TOUGH TO FIND)**
- ___ 209. 7 ¾” Fenton Horsehead Medallion Flat Plate – Mari. (scarce; nice color & detail)
- ___ 210. **6 ½” FENTON HORSEHEAD MEDALLION DEEP ROUND FLARED BOWL – AMBERINA (RARE COLOR; PERFECT & TOUGH TO FIND)**
- ___ 211. **6 ½” FENTON HORSEHEAD MEDALLION FTD. FLARED NUT BOWL – AQUA (RARE & VERY DESIRABLE BASE COLOR; NICE ITEM)**
- ___ 212. 8” Fenton Horsehead Medallion “Wannabe” J.I.P. ftd Bowl – Amber (scarce; nice color & odd shape)
- ___ 213. **8 ¼” FENTON VINTAGE GRAPE BOWL W/ 3 IN 1 EDGE – AQUA OPAL. (VERY RARE; GREAT COLOR & OPAL.; REALLY NICE)**
- ___ 214. 8 5/8” Fenton Wild Blackberry Bowl w/ 3 in 1 Edge and “H. Mayday and Co. 1910” – Green (scarce w/ the advertising; nice)
- ___ 215. **9” FENTON AUTUMN ACORN FLARED PLATE – GREEN (VERY RARE; TOUGH TO FIND W/ A BRIGHT SATINY FINISH)**
- ___ 216. **9 ¼” FENTON LOTUS AND GRAPE FLAT PLATE – GREEN (VERY RARE; GREAT COLOR AND IRID. – SOOO TOUGH TO FIND)**
- ___ 217. **8” FENTON ACORN FLAT PLATE – WHITE (NEVER SEEN A WHITE EXAMPLE)**
- ___ 218. **8” FENTON ACORN FLAT PLATE – BLUE (EXTREMELY RARE IN THIS COLOR; ONLY A FEW KNOWN)**
- ___ 219. **7 7/8” FENTON ACORN FLAT PLATE – MARI. (CAN’T SAY THAT I’VE SEEN ANOTHER IN THIS COLOR)**

220. FENTON KITTENS HANDLED CUP ONLY – BLUE (RARE; PERFECT W/ GREAT COLOR AND DETAIL)
221. FENTON KITTENS SAUCER W/ 2 SETS OF KITTENS – BLUE/ MARI. (RARE VARIATION IN THE COLOR – VERY TOUGH TO FIND)
222. FENTON KITTENS CEREAL BOWL – BLUE (RARE & DESIRABLE; GREAT COLOR & DETAIL)
223. FENTON KITTENS 4 RUFFLED TOOTHPICK HOLDER – BLUE (VERY SCARCE ITEM W/ NICE COLOR)
224. FENTON KITTENS 2-SIDED BANANA DISH – POWDER BLUE/ MARI. (VERY SCARCE BASE COLOR – NICE ODD COLOR)
225. FENTON KITTENS 4-SIDED BOWL – LT. AMETHYST (RARE ITEM IN THIS BASE COLOR; REALLY NICE!)
226. FENTON KITTENS 6 RUFFLED BOWL – AQUA/ MARI. (VERY SCARCE AND VERY DESIRABLE BASE COLOR)
227. Fenton Kittens Cup and Saucer – Mari. (scarce; nice color and detail)
228. Fenton Kittens 2-sided Banana Dish w/ 2 sets of Kittens – Mari. (really nice color and detail to a scarce variation)
229. Fenton Kittens Cereal Bowl w/ 2 sets of Kittens – Dk. Mari. (great color and detail; super nice)
230. 4 5/8" FENTON KITTENS FLARED PLATE – CRYSTAL (RARE CRYSTAL EXAMPLE – TOUGH TO FIND)
231. Fenton Kittens 4 Ruffled Toothpick Holder – Dk. Mari. (nice color; scarce)
232. FENTON ORANGE TREE STANDARD FLARED MUG – WHITE (VERY RARE; BRIGHT FINISH; NOT MANY SOLD)
233. Fenton Orange Tree Standard Flared Mug – Red (rare and always desirable; nice color)
234. Fenton Orange Tree Handled Shaving Mug – Aqua/ Mari. (very scarce base color for this size)
- 234A. FENTON ORANGE TREE HANDLED PUNCH CUP NAPPY WHIMSEY – BLUE (RARE WHIMSEY SHAPE; NICE COLOR)
235. FENTON ORNAMENTAL FIGURAL BUTTERFLY – DK. MARI. (EXTREMELY RARE NOVELTY ITEM; GREAT COLOR)
236. FENTON 3 ROW OPEN-EDGE BASKETWEAVE LG. 2-SIDED HAT – CELESTE BLUE (GREAT COLOR AND SHAPE; REALLY NICE IRID.)
237. 8 3/4" FENTON 3 ROW OPEN-EDGE BASKETWEAVE LG. ICE CREAM SHAPED BOWL – CELESTE BLUE (VERY DESIRABLE; NICE COLOR AND IRID.)
238. 6 5/8" Fenton 2 Row Open Edge Basketweave Lg. Ice Cream Shaped Bowl – Celeste Blue (scarce; nice color and irid.)
239. 5 1/4" Fenton 2 Row Open Edge Basketweave Small Ice Cream Shaped Bowl – Celeste Blue (The Baby of the Bunch; really nice)
240. 8" FENTON PEACOCK AT THE URN I.C. SHAPED BOWL – MARI./ MOONSTONE (RARE ITEM; NICE COLOR; LACKS SOME INTERIOR IRID.)
241. 8" FENTON HOLLY I.C. SHAPED BOWL – MARI./ MOONSTONE (RARE ITEM W/ A NICE MARIGOLD OVERLAY)
242. 7 1/4" Fenton G&C I.C. Shaped Bowl – Mari./ Moonstone (nice example; excellent color)
243. 7 5/8" Fenton Acorn 8 Ruffled Bowl – Mari./ Moonstone (very scarce item; really nice)
244. Fenton Banded Blackberry 6 Ruffled Hat – Mari./ Moonstone (scarce w/ nice color)
245. FENTON FERN PANELS 4-SIDED CRIMPED EDGE HAT – MARI./ MOONSTONE (ABSOLUTELY WONDERFUL SHAPE AND COLOR)
246. FENTON VINTAGE GRAPE 2-HANDLED 4-SIDED BON BON – LT. P. OPAL. (TOUGH TO FIND; LIGHT OPAL IN HANDLES)
247. 9 1/2" TALL FENTON FINE RIB STANDARD SWUNG VASE – MARI./ MOONSTONE (SO RARE TO FIND; YA NEVER SEE THEM SELL)
248. 9 1/4" Tall Fenton Fine Rib Standard Swung Vase – Blue w/ Streaks (odd color)
249. 10 1/4" TALL FENTON FINE RIB STANDARD SWUNG VASE – AQUA OPAL. (ANOTHER SO VERY RARE ITEM; REALLY NICE)
- 249A. 10" TALL FENTON FINE RIB STANDARD SWUNG BASE – VASELINE OPAL. (SUPER EXAMPLE; GREAT COLOR AND OPAL.)
250. FENTON HOLLY 6 RUFFLED HAT – AMETHYST OPAL. (VERY RARE COLOR FOR THIS ITEM)
251. FENTON BLACKBERRY SPRAY 2-SIDED HAT – AMETHYST OPAL. (TOUGH TO FIND; NICE OPAL. ON THE EDGE)
252. FENTON 2 ROW OPEN EDGE BASKETWEAVE 2-SIDED HAT – REVERSE AMBERINA OPAL. (RARE COLOR VARIATION; TOUGH TO FIND)
253. FENTON WREATH OF ROSES 4-SIDED CENTER-PIECE BOWL W/ BASE FROM PUNCH BOWL – GREEN (FROM THE GREAT COLLECTION OF BETTY BURNS; VERY RARE)
254. FENTON 2 ROW OPEN EDGE BASKETWEAVE J.I.P. VASE – RED (NICE COLOR AND IRID.)
255. 8" FENTON DRAGON AND LOTUS I.C. SHAPED BOWL – RED (RARE AND DESIRABLE – NICE COLOR W/ AVERAGE IRID.)
256. 6 3/8" Fenton Acorn Deep Round Bowl – Red (nice color and has pretty nice irid.)
257. 6" FENTON LOTUS AND POINSETTIA FTD. 6 RUFFLED SAUCE – REVERSE AMBERINA (VERY SCARCE W/ A SATINY FINISH; NICE)
258. 9" FENTON PEACOCK AND GRAPE 8 RUFFLED SAUCE – RED/ AMBERINA (ANOTHER SCARCE ITEM W/ NICE SATINY IRID.)
259. Fenton Holly Stemmed 6 Ruffled Compote – Red/ Amberina (scarce; tough to find)
260. FENTON LOTUS AND GRAPE 2-HANDLED 4-SIDED BON BON – RED (PROBABLY THE TOUGHEST RED PIECE; REALLY NICE)
261. FENTON PERSIAN MEDALLION 2-HANDLED 4-SIDED BON BON – RED (ANOTHER NICE EXAMPLE; GREAT COLOR & IRID.)

262. 6 3/4" Fenton Blackberry Spray 6 Ruffled Hat – Red (scarce; nice color)
263. Fenton 2 Row Open Edge Basketweave 4-Sided Hat – Green (excellent example)
264. **FENTON TWO FLOWERS GIANT FTD. ROSE BOWL – ELEC. BLUE (RARE & VERY DESIRABLE W/ GREAT IRID.; NICE)**
265. **FENTON STRAWBERRY SCROLL 7 PC. BULBOUS WATER SET – DK. MARI. (VERY RARE SET; COMPLETE & PERFECT; NICE COLOR)**
266. **FENTON LATTICE AND GRAPE TANKARD WATER PITCHER – WHITE (VERY RARE; SO TOUGH TO FIND; NICE IRID.)**
267. Fenton Daisy Cut Dinner Bell – Mari. (scarce; nice item)
268. Fenton Interior Rib Whimsey Spittoon from Master Berry Bowl – Dk. Mari. (very unusual; great color)
269. 5 3/4" Fenton April Showers Squatty 6 Ruffled Vase – Amethyst (odd size)
270. **19 5/8" TALL X 7-8" DIAM. X 5 1/4" BASE FENTON RUSTIC SWUNG FUNERAL VASE – AMETHYST (VERY RARE W/ EXCELLENT COLOR & IRID.)**
271. **18 1/4" TALL X 7 3/4" DIAM. X 5 1/4" BASE FENTON RUSTIC SWUNG FUNERAL VASE – BLUE (VERY SCARCE W/ NICE COLOR)**
272. **20 1/8" TALL X 7" DIAM. X 5 1/4" BASE FENTON RUSTIC SWUNG FUNERAL BASE – DK. MARI. (REALLY NICE EXAMPLE; GREAT COLOR & IRID.)**
273. Fenton Holly Goblet Shaped Stemmed Compote – Aqua (scarce base color)
274. **FENTON PANTHER 3 FTD. 6 RUFFLED IND. BERRY BOWL W/ BUTTERFLY AND BERRY EXT. – AQUA (RARE COLOR FOR THIS PATTERN; REALLY NICE)**
275. **N G&C FTD VASE WHIMSEY FROM HATPIN HOLDER MOULD – PURPLE (EXTREMELY RARE N'WOOD ITEM W/ GREAT COLOR; HAS FLAKE ON BACK OF 1 FOOT)**
276. N G&C ftd. Hatpin Holder – Purple (scarce; dark color)
277. N G&C Cologne Bottle and Stopper – Purple (scarce w/ excellent irid.)
278. N G&C Covered Powder Jar – Purple (scarce item)
279. N G&C Small Oval Pin Tray – Purple (very scarce item; nice irid.)
280. **N G&C PERFUME BOTTLE AND STOPPER – PURPLE (SUPER EXAMPLE W/ EXCELLENT COLOR & IRID.)**
281. N G&C Pin Nappy Whimsey from Punch Cup – Purple (nice color)
282. N G&C Banded Cologne Bottle only, made into a Lamp – Purple (an oddity made from an attractive item)
283. N G&C Covered Sweetmeat Compote – Purple (super example)
284. Pair N G&C Candlesticks – Purple (scarce pair; nice color, irid. and well matched)
285. **N G&C 7PC. STANDARD RUFFLED PUNCH SET – PURPLE (SUPER COLOR AND IRID.; NICE SET)**
286. **N G&C FTD. FERNERY – PURPLE (ONE OF THE BEST EXAMPLES I'VE SEEN!)**
287. N G&C Shot Glass – Purple (scarce item; nice)
288. **N G&C COVERED BUTTER DISH – PURPLE (ABSOLUTELY SUPER EXAMPLE; THE BEST!)**
289. N G&C Covered Compote – Purple (scarce; nice color & irid.)
290. **N G&C STIPPLED COVERED TOBACCO JAR – BLUE (RARE & DESIRABLE; TOUGH TO FIND; NICE)**
291. **N G&C STIPPLED COVERED TOBACCO JAR – DK. MARI. (ACTUALLY QUITE A TOUGH ITEM TO FIND)**
292. **N G&C FTD. STRAIGHT UP FRUIT BOWL – WHITE (VERY SCARCE W/ EXCELLENT IRID.; NICE)**
293. **8 3/4" N G&C VARIANT STIPPLED FLARED PLATE W/ RIBBED EXT. AND "OLD ROSE DISTILLERY" ADVERTISING – GREEN (VERY SCARCE, VERY DESIRABLE AND VERY NICE)**
294. **9 1/4" N G&C VARIANT STIPPLED FLAT PLATE W/ RIBBED EXT. – GREEN (RARER W/O THE ADVERTISING; NICE IRID.)**
295. 9" N G&C Stippled Flared Plate w/ Basketweave Ext. – Purple (super example w/ great irid.)
296. N G&C Variant Flat Plate w/ Plain Ext. – Purple (flat as can be – super example)
297. 10 1/4" N G&C Lg. Ice Cream Bowl w/ Basketweave Ext. – Purple (scarce and very desirable; nice irid.)
298. **8 3/4" N WISHBONE FTD. PLATE W/ RUFFLES AND RINGS EXT. – PURPLE (SUPER EXAMPLE W/ A BRIGHTER FINISH)**
299. **8 3/4" N WISHBONE FTD. 8 RUFFLED BOWL W/ RUFFLES AND RINGS EXT. – ICE BLUE (RARE; GREAT COLOR W/ EXCELLENT IRID.)**
300. **5 1/2" N INTAGLIO THREE FRUITS ROUND 3 FTD. BOWL – DK. MARI. (EXTREMELY RARE ITEM; PROBABLY AS RARE A N'WOOD ITEM THERE IS.)**
301. **N DIAMOND POINT FTD. ROUND BUSHEL BASKET – DK. MARI. (VERY RARE AND PERFECT; GREAT COLOR AND IRID.)**
302. **N DAISY AND PLUME FTD. RUFFLED ROSE BOWL W/ BERRY INTERIOR – SMOKEY HOREHOUND (REALLY ODD BASE COLOR- VERY UNUSUAL)**
303. N Beaded Cable ftd. Ruffled Rose Bowl – Emerald Green (one of the best examples; super irid.)
304. N Beaded Cable ftd. Ruffled Rose Bowl – Aqua Opal. (scarce and desirable – nice opal.)
305. **12 3/4" TALL N TREE TRUNK MID-SIZE SWUNG VASE – ICE GREEN (VERY RARE AND ALWAYS DESIRABLE; REALLY NICE)**
306. **12 1/4" TALL N TREE TRUNK MID-SIZE SWUNG VASE – ICE BLUE (VERY RARE EXAMPLE; REALLY NICE)**
307. **12 7/8" TALL N TREE TRUNK MID-SIZE SWUNG VASE – WHITE (SUPER FROSTY W/ EXCELLENT IRID.; NICE)**
308. 13" Tall N Tree Trunk Mid-Size Swung Vase – Green (excellent example – really nice irid.)
309. 12 1/2" Tall N Tree Trunk Mid-Size Swung Vase – Dk. Mari. (another super example; really nice)
310. **13 1/8" TALL N THIN RIB MID-SIZE SWUNG VASE – VASELINE (RARE COLOR – EXCELLENT IRID. W/ AN ODD SHAPE)**
311. **13 1/8" TALL N THIN RIB MID-SIZE SWUNG VASE – SAPPHIRE BLUE (VERY RARE COLOR W/ EXCELLENT IRID.; NICE)**
312. 13 3/4" Tall N Thin Rib Mid-Size Swung Vase – Dk. Mari. (super example; so tough to find; nice)

313. 11 1/2" TALL N THIN RIB STANDARD SWUNG VASE – SAPPHIRE BLUE (RARE ITEM W/ EXCELLENT COLOR & IRID.)
314. 8 1/4" TALL N THIN RIB STANDARD ROLLED EDGE VASE – GREEN ("JESTERS CAP" VASE W/ ALL POINTS ROLLED OVER)
315. 9 3/4" N DIAMOND POINT STANDARD SWUNG VASE – SAPPHIRE (EXTREMELY DESIRABLE COLOR AND TOUGH TO FIND)
316. 10 1/2" N Diamond Point Standard Swung Vase – Lime Ice Green (very scarce w/ nice color and irid.)
317. 11" N DIAMOND POINT STANDARD SWUNG VASE – ELEC. PURPLE (ABSOLUTELY SUPER IRID. AND HAS THE ORIGINAL N'WOOD LABEL)
318. 11" N Tree Trunk Standard Swung Vase – Elec. Purple (super irid.; nice)
319. 10 3/4" N Tree Trunk Standard Swung Vase – Ice Green (scarce; silvery)
320. N MEMPHIS 7 PC. RUFFLED PUNCH SET – WHITE (VERY RARE & DESIRABLE; NICE & FROSTY)
321. N ROUND HANDLED BUSHEL BASKET – SAPPHIRE (VERY RARE; NOT OFTEN SOLD)
322. N Round Handled Bushed Basket – Aqua Opal. (scarce and desirable; opal. on edge)
323. N EIGHT-SIDED HANDLED BUSHEL BASKET – AQUA/ SAPPHIRE (RARE BASE COLOR; NICE)
324. N Eight-Sided Handled Bushel Basket – Green (scarce; nice irid.; tough to find)
325. 9 1/4" N ROSE SHOW FLARED PLATE – BLUE (WOW EXAMPLE; THIS HAS IRID. THAT WON'T STOP)
326. 8 5/8" N Poppy Show 8 Ruffled Bowl – Ice Blue (rare and very desirable; nice irid.)
327. 9 1/8" N PEACOCKS PLATE W/ RIBBED EXT. – ICE BLUE (RARE & VERY DESIRABLE W/ EXCELLENT IRID.; NICE)
328. 9" N Peacocks 8 Ruffled Bowl w/ Ribbed Ext. – Elec. Blue (super example w/ excellent irid.; nice)
329. N PEACOCK AT THE FOUNTAIN TUMBLER – GREEN (RARE COLOR FOR THIS ITEM; VERY TOUGH TO LOCATE)
330. 10 1/2" N PEACOCK AT THE URN FLARED CHOP PLATE W/ ORIGINAL WIRE HANDLE – PURPLE (RARE & VERY DESIRABLE; HAS NICE FLARE & SATINY FINISH)
331. 10 3/8" N PEACOCK AT THE URN LG. 8 RUFFLED BOWL – DK. MARI. (SUPER EXAMPLE W/ EXCELLENT COLOR AND IRID.)
332. 9 3/8" N PEACOCK AT THE URN STIPPLED LG. ICE CREAM BOWL – BLUE (REALLY NICE MULTI-COLORED SATINY FINISH; ATTRACTIVE)
333. 9 3/4" N Peacock at the Urn Lg. Ice Cream Bowl – Purple (very scarce w/ nice color and irid.)
334. 9 5/8" N Peacock at the Urn Lg. Ice Cream Bowl – Dk. Mari. (another scarce item w/ nice color & irid.)
335. 9" N STRAWBERRY PLATE W/ BASKETWEAVE EXT. – MARI. W/ OPAL TIPS (VERY RARE N'WOOD ODDITY; OPAL ON EDGE)
336. 8 7/8" N STRAWBERRY PLATE W/ PLAIN EXT. – LT. AMETHYST (ODD LIGHTER TINT W/ EXCELLENT IRID.)
337. 9" Strawberry Stippled 8 Ruffled Bowl w/ Ribbed Ext. – Purple (has an electric irid. finish; really nice)
338. N CORN VASE W/ STALK BASE – GREEN (RARE & DESIRABLE, NICE BRIGHT HIGHLIGHTS)
339. N Corn Vase w/ Stalk Base – Ice Green (scarce w/ nice color & irid.)
340. N IVY TOWN PUMP – MARI. (RARE & VERY DESIRABLE; GREAT COLOR & PERFECT)
341. N IVY TOWN PUMP – PURPLE (RARE & DESIRABLE; NICE COLOR AND IRID.)
342. N RASPBERRY 7 PC. WATER SET – ELEC. PURPLE (PROBABLY THE BEST SET OF THIS PATTERN I'VE SEEN)
343. N Raspberry Handled Water Pitcher – Ice Blue (rare w/ great color and irid.; sanded chip inside edge)
344. N Fruit and Flowers Stemmed Handled Bon Bon – Aqua Opal. (very desirable; opal. on edge w/ nice irid.)
345. 9 1/8" N THREE FRUITS STIPPLED FLARED PLATE W/ RIBBED EXT. – ELEC BLUE (RARE, DESIRABLE; W/ EXCELLENT BLUE HIGHLIGHTS – NICE!!)
346. 8 7/8" N THREE FRUITS FLARED PLATE W/ PLAIN EXT. – AMETHYST (SUPER EXAMPLE W/ EXCELLENT IRID.; NICE)
347. 8 7/8" N GOOD LUCK STIPPLED 8 RUFFLED BOWL W/ NARROW BASE AND UNIRIDIZED EXT. – ELEC. BLUE (VERY DESIRABLE BEFORE YOU KNEW THERE'S A N'WOOD LABEL ON THE UNDERSIDE)
348. 9 3/8" N DRAPERY VARIANT SWUNG VASE – AMETHYST (SUPER EXAMPLE; BRIGHT IRID.)
349. 9" N PILLAR AND DRAPERY SWUNG VASE – GREEN/ MARI. (RARE COLOR FOR THIS SCARCE ITEM)
350. N EMBROIDERED MUMS FTD. 2-HANDLED BON BON – WHITE (EXTREMELY RARE N'WOOD ITEM; GREAT IRID.)
351. N BASKET OF ROSES 2-HANDLED 4-SIDED BON BON W/ BASKETWEAVE EXT. – DK. MARI. (SUPER EXAMPLE W/ GREAT DARK COLOR)
352. N Basket of Roses 2-Handled 4-Sided Bon Bon w/ Basketweave Ext. – Purple (scarce w/ nice color & irid.)
353. N Butterfly 2-Handled 4-Sided Bon Bon w/ Threaded Ext. – Blue (nice example w/ this threaded exterior)
354. N TORNADO LARGE TRI-CORNERED VASE – GREEN (RARE & DESIRABLE – SORTA SPITTOON SHAPED)
355. N TORNADO LARGE PINCHED IN TRI-CORNERED VASE – LT. MARI. (A LIGHTER EXAMPLE; SO TOUGH TO FIND; NICE)
356. N Daisy and Drape ftd. Turned-in Vase – White (scarce w/ great color & irid.)
357. 6 7/8" Tall N Thin Rib Squatty Swung Vase – White (desirable size w/ nice irid.)
358. 7" Tall N Thin Rib Squatty Swung Vase – Purple (nice satiny finish)
359. 10" Tall N Thin Rib Standard Swung Vase – Emerald Green (stone flake on edge)
360. 6 1/2" Tall N Tree Trunk Squatty Swung Vase – Purple (satiny; nice)

DONALD DORAIS
150 HIGHLAND AVENUE
CUMBERLAND, RI 02864

BURNS

AUCTION SERVICE



VISIT TOMBURNSAUCTIONS.COM
FOR PICTURES AND BROCHURE.

AUCTION FLEX AVAILABLE FOR
THIS AUCTION. CHECK US OUT
ON AUCTION ZIP #29661



Lot 145

Lee Markley
Box 306
Mentone, IN 46539

CARNIVAL GLASS AUCTION SATURDAY, FEBRUARY 11th AT 9:30 A.M.



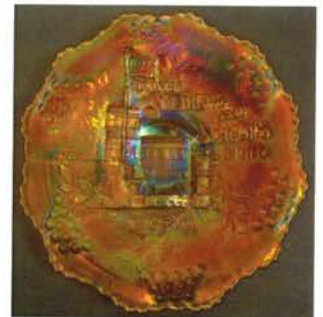
Lot 200



Lot 235



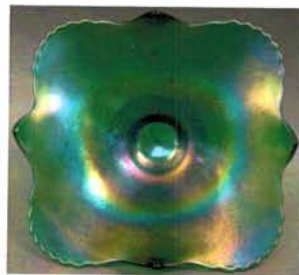
Lot 301



Lot 207



Lot 15



Lot 20



Lot 135



Lot 17



Lot 160



Lot 50



Lot 65



Lot 161