



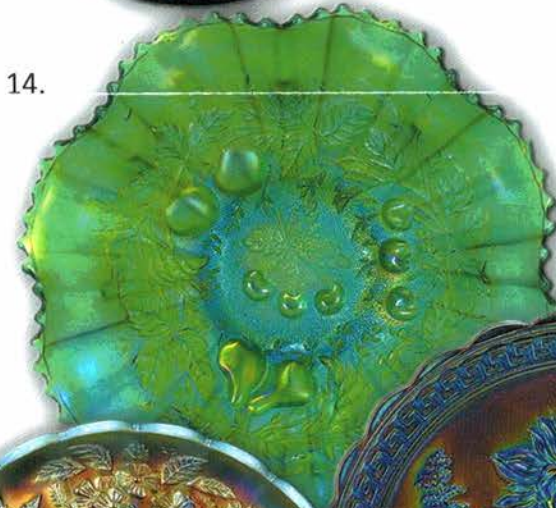
41.

Carnival Glass 2016 Auction

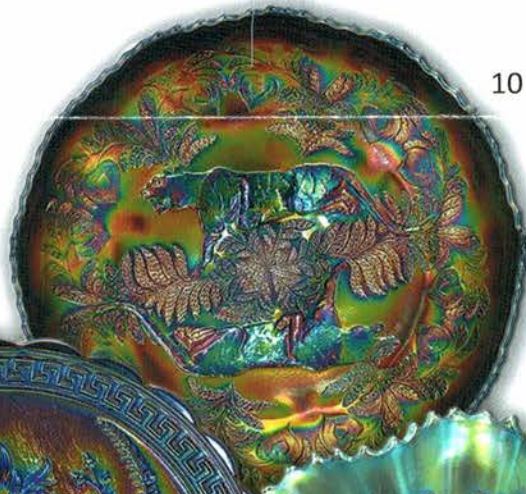
Saturday, November 5
9:30 a.m.

The Leila Galvin Collection

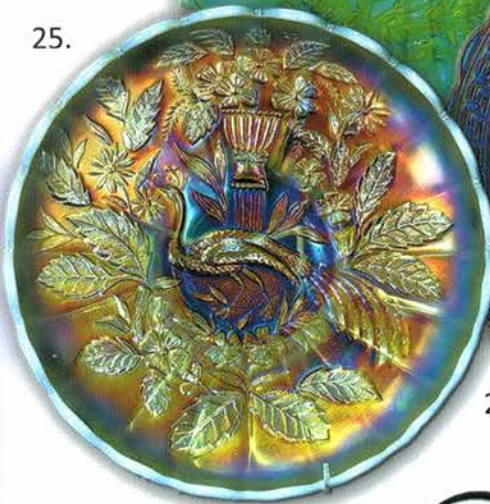
Embassy Suites Airport Hotel
Kansas City, Missouri



14.



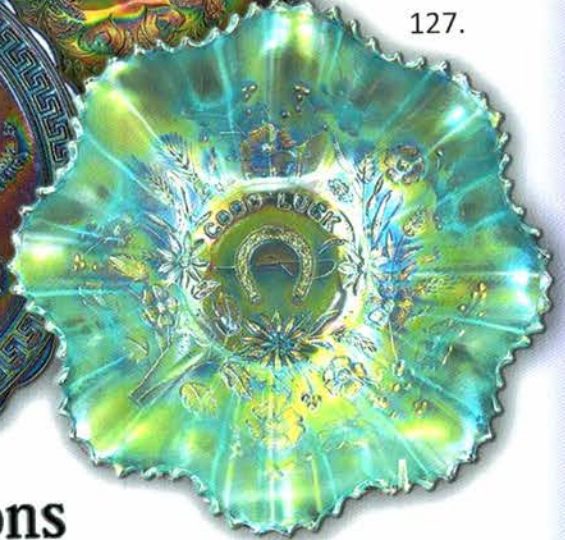
10



25.



290.



127.

Seeck Auctions
Jim & Jan Seeck
641-424-1116



SATURDAY, NOVEMBER 5, 2016 — 9:30 A.M.

Jim & Jan Seeck Embassy Suites (Airport) Hotel — Kansas City, Mo. 641-424-1116
7640 NW Tiffany Springs Parkway 64153

Preview: Friday Evening

★ **Online absentee bidding closes, Friday, Nov. 4 at 9 pm CST**

ABSENTEE BIDDING is available on-line through Auction Flex using our online catalog at www.seeckauction.com

★ **NO BUYER'S PREMIUM -- EMAIL: jimjan@seeckauction.com**

Featuring the Leila Galvin Collection

There is a first for everything and this is the first time we have had an Australian collector ship their collection over to the states for auction. Leila has collected Carnival Glass for several years and made several trips to the United State to buy glass in the 80s. She knew color and quality and you can see it in her gorgeous glass. Make the trip to Kansas City to buy some fantastic Carnival Glass.

HOACGA will be sponsoring an activity before and after the Friday evening preview.

LODGING

Reservations can be made by calling the hotel directly at 816-891-7788. Ask for reservations and mention the Seeck Auction. If you have a problem or questions about reservations, please give us a call. The reservation cut-off date for the special rate of \$119 is Friday, October 21.

Terms: Cash or Check, VISA, MasterCard and Discover accepted w/proper ID. **4% Clerking Fee** on all purchases made using credit cards. Announcements made day of sale take precedence over any printed information.

We have 3 options for ABSENTEE BIDDING for our live auctions:

- 1) **WRITTEN OR PHONE:** If you **DO NOT** have internet access or access to our website, you can: Call us by phone to enter your bids at (641) 424-1116 **OR** By sending the numbers of the item(s) desired and the amount bid on each to: Seeck Auctions, PO Box 377, Mason City, Iowa 50402. (The mail has not been very dependable. We would prefer you call us with your bids rather than send them in a letter.)
 - All written and called in bids will be entered into the online catalog by us.
 - **Written and Phone Absentee Deadline:** Have all bids in by **Wednesday, Nov. 2.**
- 2) **ONLINE CATALOG:** Enter your bids from our website into our online catalog through the Auction Flex system. When you get to the online catalog, you will need to login as a bidder. For the first time you will need to **set up your account** by creating a user name and password. This will include filling out a form with your name, address, etc. You will also need to **register for the auction** which will ask you to enter a valid credit card number. This card will be validated by a \$1 charge to your card. This will only happen once and you will now be able to enter bids through our online catalog by just logging in with your user name and password. You will use this user name and password for all our auctions. You are not required to pay by credit card if you are successful. This is just a safeguard for us if someone does not pay. We will let you know what you owe us through an email and you can decide how you would like to pay us.
 - *An exciting advantage of entering your bids online yourself,* is the option to be notified by email if you are outbid on an item. You will know when you are outbid on an item and you can increase your bid on that item or bid on something else. **There will be a cutoff date and time for entering your bids online, generally at 9 p.m. the night before each live auction.** After this time has passed, you will not be able to enter your bids from our online catalog.
 - *Remember,* that just because you are the high bidder in the online catalog, this does not mean you have won the item. Your bid will still need to beat the floor bidders and live phone bidders. This system will run our absentee bids just as we did before. You will still be able to buy the item lower than your online bid unless someone on the floor bids you higher.
- 3) **LIVE PHONE BIDDING:** Available on pieces with an estimated sale price of \$500 or more. If you would like to participate in live phone bidding, contact us by **the Thursday before the auction, Nov. 3.** We will need to know the lot# and the phone number that you can be reached at on the day of the auction. We will also need your home phone number if different than the above number. Please call with questions: 641-424-1116.
 - **There is a \$7 handling charge for each successful bid. Shipping and insurance charges are additional.** bidders will be notified by phone/email if their bid(s) are successful. This will be done 1 - 3 days after the auction.
 - **If you do not receive an item that sold for less than your bid, assume we cancelled your bid because the item had a severe manufacture problem, damage or was not listed correctly.**

BID INCREMENTS: \$1 - \$100/\$5	\$100 - \$200/\$10	\$200 - \$700/\$25	\$700 - \$1,500/\$50
\$1,500 - \$3,000/\$100	\$3,000 - \$5,000/\$250	\$5000+ Auctioneer's Discretion	

- ___ 1. Australian Kingfisher ruffled sauce or nappy - dark - tiny pinpoint on side of base
- ___ 2. Australian Kingfisher ruffled sauce or nappy-marigold
- ___ 3. Australian Shrike ruffled sauce or nappy - marigold
- ___ 4. Australian Diamond open sugar bowl - dark
- ___ 5. **Australian Kangaroo master ruffled bowl - dark - nice**
- ___ 6. Australian Gum Tips 10" vase - marigold - base is 2 7/8"
- ___ 7. N's Thin Rib 6" squatty vase - green
- ___ 8. Dugan Cherries crimped edge 6" plate - purple - nice
- ___ 9. M'burg Grape Wreath Variant IC shaped sauce - marigold - radium, pretty
- ___ 10. **Panther ftd centerpiece bowl - blue - super pretty example of this rare bowl, fabulous!**
- ___ 11. **Panther ftd centerpiece bowl - marigold - super nice, very scarce, another highly desirable piece**
- ___ 12. Scales banana boat shaped dish - peach opal - pretty
- ___ 13. **Stippled Three Fruits ruffled bowl w/ribbed back - ice blue - very rare & pretty, 2 points made of epoxy**
- ___ 14. **Stippled Three Fruits ruffled bowl w/ribbed back - emerald green - super rare color & nice**
- ___ 15. **Stippled Three Fruits ruffled bowl w/ribbed back - aqua opal - butterscotch, scarce, nice**
- ___ 16. **Stippled Three Fruits ruffled bowl w/ribbed back - white - nice**
- ___ 17. **Stippled Three Fruits ruffled bowl w/ribbed back - green - very scarce color, nice**
- ___ 18. Stippled Three Fruits ruffled bowl w/ribbed back - purple - 2 tiny flakes on edge
- ___ 19. Stippled Three Fruits ruffled bowl w/ribbed back - amethyst - some might call it lavender, nice
- ___ 20. Stippled Three Fruits ruffled bowl w/ribbed back - marigold - dark, nice
- ___ 21. **Dugan's Heavy Grape lg ruffled bowl - purple - super beautiful, highly desirable**
- ___ 22. **Dugan's Heavy Grape lg ruffled bowl - peach opal - scarce, nice**
- ___ 23. **M'burg Nesting Swan ruffled bowl w/red decorated highlights - amethyst - radium, there are spots on the birds and the leaves that have a red decoration under the iridescence, very unusual**
- ___ 24. Peacock & Grape spt ftd 9" plate - marigold
- ___ 25. **N's Peacock at Urn master IC bowl - aqua opal - one of the hobby's most sought after pieces, super nice, great opalescence, here is your chance!**
- ___ 26. **N's Peacock at Urn master IC bowl - green - very rare color, nice**
- ___ 27. **N's Peacock at Urn IC sauce - green - very pretty irid., nice example**
- ___ 28. **N's Peacock at Urn master IC bowl - blue - electric & super nice, rare color**
- ___ 29. **N's Peacock at Urn IC sauce - blue - nice**
- ___ 30. **N's Peacock at Urn master IC bowl - ice blue - scarce color**
- ___ 31. **N's Peacock at Urn IC sauce - ice green**
- ___ 32. **N's Peacock at Urn master IC bowl - white - nice**
- ___ 33. **N's Peacock at Urn IC sauce - white - pretty irid.**
- ___ 34. **N's Peacock at Urn master IC bowl - purple - a beauty**
- ___ 35. **N's Stippled Peacock at Urn master IC bowl - marigold - very low shape, nice**
- ___ 36. **N's Stippled Peacock at Urn master IC bowl - pastel marigold - loaded with pink & blue irid., beautiful!**
- ___ 37. **Three Row Open Edge ruffled bowl - ice blue - very nice, scarce**
- ___ 38. **Fenton Peacock at Urn 9" plate - blue - electric & super fantastic, one of the best**
- ___ 39. Fenton Peacock at Urn 9" plate - marigold - dark, nice
- ___ 40. Fenton Peacock at Urn 9" plate - white
- ___ 41. **Poppy Show vase - purple - outstanding, a top rarity, WOW!**
- ___ 42. Estate breakfast set - peach opal - scarce color
- ___ 43. **Peacocks 9" plate w/ribbed back - blue - electric, nice**
- ___ 44. Peacocks 9" plate w/ribbed back - purple - scarce
- ___ 45. Peacocks 9" plate w/ribbed back - ice green
- ___ 46. Peacocks 9" plate w/ribbed back - white - pretty irid.
- ___ 47. Peacocks 9" plate w/ribbed back - marigold - dark, nice
- ___ 48. Grape & Cable hatpin holder - purple
- ___ 49. **Homestead chop plate - purple - very pretty example, great mold work**
- ___ 50. **Homestead chop plate - emerald green - very rare color, has large chip on collar base**
- ___ 51. **Homestead chop plate - marigold - very pretty irid.**
- ___ 52. **NUART Homestead chop plate - amber - a beautiful example with great mold work and pretty irid.**
- ___ 53. **NUART Homestead chop plate - marigold - very nice**
- ___ 54. Dugan Cherries ftd ruffled bowl - purple - nice
- ___ 55. **Farmyard 8 ruffled bowl - purple - a bit silvery, rare**
- ___ 56. Peacock & Grape IC shaped bowl - peach opal - scarce color, nice
- ___ 57. **Broken Arches 8 pc. punch set - purple - very pretty set, minor burst inside bowl and minor burst on collar base of bowl**
- ___ 58. Fishnet epergne - peach opal
- ___ 59. M'burg Hobnail rose bowl - amethyst - very nice example
- ___ 60. Stippled Good Luck PCE bowl w/ribbed back - marigold - pretty

- ___ 61. **Diamond Point 10" vase - powder blue - super pretty vase, not sure what color to call it, mixture of sapphire, powder and ice blue, has some streaks of opal running by the top edge, large chip on base, unique vase**
- ___ 62. Diamond Point 10" vase - blue - nice
- ___ 63. N's Footed Fine Rib JIP 6 1/2" vase - green - super pretty example, scarce
- ___ 64. **Corn vase w/stalk base - marigold - dark & very nice**
- ___ 65. **Persian Medallion 10" 3 in 1 edge bowl - blue - has super irid., beautiful**
- ___ 66. Singing Birds 7 pc. water set - green - very pretty pitcher, many may call it emerald
- ___ 67. Ripple 10 1/2" vase - purple - 3 3/8" base
- ___ 68. Coral ruffled bowl - marigold - very pretty
- ___ 69. **Rose Show 9" plate - ice blue - pretty irid. on this scarce plate, tiny minor pinpoint on top of one rose**
- ___ 70. Rose Show 9" plate - purple - scarce color, nice
- ___ 71. Rose Show 9" plate - marigold - very dark, pretty, some wear on the high points on the roses
- ___ 72. Rose Show 9" plate - marigold - more on the pastel side, chips on the roses
- ___ 73. **N's Wide Panel epergne - purple - rare color, top of base where lilies fit is damaged and restored**
- ___ 74. **N's Wide Panel epergne - green - one lily hole has a couple of chips, scarce**
- ___ 75. **N's Wide Panel epergne - marigold - chips around holes where lilies fit**
- ___ 76. Raspberry ftd ruffled candy dish - lime green - rare color & nice
- ___ 77. Butterfly & Berry 7 pc. water set - blue - scarce set, one tumbler has chip on base
- ___ 78. Rose Garden 9 1/2" vase - marigold - nice
- ___ 79. **Stippled Good Luck 9" plate w/ribbed back - renninger blue - rare color, highly desirable, nice**
- ___ 80. **Stippled Good Luck 9" plate w/ribbed back - marigold - lots of yellow irid., pretty**
- ___ 81. Ripple 15" vase - purple - 3 7/8" base
- ___ 82. Brides crimped edge bowl - peach opal - pretty, 11" diameter
- ___ 83. **Poppy Show ruffled bowl - blue - scarce, very nice**
- ___ 84. **Poppy Show ruffled bowl - marigold - very pretty irid.**
- ___ 85. Poppy Show ruffled bowl - white - pretty irid., tiny pinpoint on edge
- ___ 86. **Three Row Open Edge 2 sides up dish - ice green - heavy stretch irid., neat**
- ___ 87. **Three Row Open Edge 2 sides up dish - white - pretty**
- ___ 88. **Three Row Open Edge 2 sides up dish - marigold - dark, pretty, scarce color**
- ___ 89. Mikado lg ruffled compote - blue - highly desirable
- ___ 90. Dragon & Lotus 3 in 1 edge bowl - marigold - dark, pretty
- ___ 91. Open Rose ftd centerpiece bowl - purple - very pretty, chip on rose
- ___ 92. M'burg Trout & Fly IC shaped bowl - marigold - satin
- ___ 93. **Poinsettia & Lattice ftd ruffled bowl - blue - scarce, has electric highlights**
- ___ 94. **Poinsettia & Lattice ftd ruffled bowl - purple - very nice**
- ___ 95. **Poinsettia & Lattice ftd ruffled bowl - marigold - pretty**
- ___ 96. Tree Trunk 14" mid size vase - green - nice
- ___ 97. Stippled Strawberry ruffled bowl w/ribbed back - marigold - dark, nice
- ___ 98. Stippled Basket of Roses bonbon - purple - nice, scarce
- ___ 99. **Stippled Peacocks PCE bowl w/ribbed back - green - rare color to find stippled, nice**
- ___ 100. Stippled Peacocks PCE bowl w/ribbed back - renninger blue - rare color, one point polished off
- ___ 101. Stippled Peacocks PCE bowl w/ribbed back - marigold - manufacture separation in excess glass, nice
- ___ 102. Dandelion mug - aqua opal - nice example
- ___ 103. **Plaid ruffled bowl - green - rare color, nice**
- ___ 104. **Plaid ruffled bowl - amethyst - probably a rarer color than green, nice**
- ___ 105. Plaid ruffled bowl - blue - nice example
- ___ 106. Plaid ruffled bowl - marigold - pretty
- ___ 107. **Luster Rose round ftd fruit bowl - purple - electric & very nice, hard to get**
- ___ 108. Greek Key ruffled bowl w/BW back - purple - scarce
- ___ 109. Greek Key ruffled bowl w/ribbed back - marigold - nice
- ___ 110. Greek Key ruffled bowl w/ribbed back - marigold - pastel & pretty
- ___ 111. Butterfly bonbon w/threaded back - purple - nice, scarce
- ___ 112. **Rustic 17" funeral vase - marigold - quite squatty for a funeral vase, neat**
- ___ 113. Sunflower spt ftd ruffled bowl - ice blue - chip on one spt foot, rare color
- ___ 114. **Sunflower spt ftd ruffled bowl - renninger blue - another rare color, nice**
- ___ 115. Sunflower spt ftd ruffled bowl - blue - scarce color
- ___ 116. Sunflower spt ftd ruffled bowl - marigold
- ___ 117. Palm Beach 4 pc. table set - white - super pretty set, chip on base of creamer, buffed spot on base of sugar, butter dish has a couple of rough spots on base
- ___ 118. **Stippled Peacocks 9" plate w/ribbed back - blue - very pretty, has electric highlights**

- ___ 119. Stippled Peacocks 9" plate w/ribbed back - marigold - very nice
- ___ 120. **Butterfly & Berry crimped edge whimsey ftd bowl - green - neat whimsey, probably made from the fernery**
- ___ 121. Captive Rose 9" plate - blue - very pretty example for these
- ___ 122. **Peacock at the Fountain 7 pc. punch set - marigold - very pretty set, highly desirable**
- ___ 123. Peacock at the Fountain punch cup - ice blue - scarce color
- ___ 124. **Grape & Cable turned up centerpiece bowl - ice green - pretty irid., rare color**
- ___ 125. Round Up ruffled bowl - purple - nice, pinpoint on tip of point
- ___ 126. Round Up ruffled bowl - peach opal - nick on point
- ___ 127. **Good Luck ruffled bowl w/ribbed back - ice blue - super pretty example, as nice as these get, rare color**
- ___ 128. Good Luck ruffled bowl w/ribbed back - green - very nice example
- ___ 129. **Good Luck ruffled bowl w/ribbed back - marigold - can only describe this having hot pink irid., fantastic!**
- ___ 130. Good Luck ruffled bowl w/ribbed back - marigold - dark, super
- ___ 131. **Loganberry vase - purple - fantastic irid., a beauty for this scarce piece**
- ___ 132. Beaded Spears pitcher w/metal lid - marigold - JAIN
- ___ 133. Fluffy Peacock 7 pc. water set - amethyst - scarce
- ___ 134. Two Fruits divided bonbon - green - scarce color
- ___ 135. **Holly 9" plate - green - if you want a pretty one, here you go, this is a super nice one, rare**
- ___ 136. Holly 9" plate - amethyst - scarce color
- ___ 137. Holly 9" plate - blue
- ___ 138. Holly 9" plate - marigold - dark, nice
- ___ 139. **Holly 9" plate - marigold - covered with pink & yellow stretchy irid., neat**
- ___ 140. Panther ftd ruffled sauce - aqua - rare color
- ___ 141. Orange Tree ruffled bowl - green - pretty, chip on point
- ___ 142. Cobblestone ruffled bowl - purple - manufacture mold roughness on base
- ___ 143. Mikado IC shaped compote - marigold - nice
- ___ 144. **Dandelion 7 pc tankard water set - purple - nice pitcher, 5 tumblers have ribbed interior**
- ___ 145. Daisy & Drape turned in vase - white
- ___ 146. Coral 3 in 1 edge bowl - marigold - hard to find in this shape
- ___ 147. **Rose Show ruffled bowl - green - very pretty example, rare color**
- ___ 148. Rose Show ruffled bowl - purple - scarce
- ___ 149. **Rose Show ruffled bowl - aqua opal - pastel, lots of opal, nice example**
- ___ 150. Rose Show ruffled bowl - aqua opal - butterscotch, pretty, chip on rose
- ___ 151. Tree Trunk 10" vase - blue - peeling on top edge of one ruffle
- ___ 152. Tree Trunk 11" vase - green
- ___ 153. Orange Tree loving cup - green - scarce color
- ___ 154. **Feather Stitch ruffled bowl - white - very rare color, not many known**
- ___ 155. Stippled Three Fruits 9" plate w/ribbed back - blue - very pretty, has electric highlights
- ___ 156. Stippled Three Fruits 9" plate w/ribbed back - purple
- ___ 157. Stippled Three Fruits 9" plate w/ribbed back - marigold - very pretty
- ___ 158. **Peacock at the Fountain ruffled fruit bowl - blue - rare color, nice**
- ___ 159. **Peacock at the Fountain ruffled fruit bowl - marigold - scarce**
- ___ 160. Open Rose 9" plate - purple - very pretty, repair on back edge
- ___ 161. **Butterfly & Berry hatpin holder - marigold - scarce & highly desirable**
- ___ 162. Dugan Cherries ruffed sauce - purple
- ___ 163. Fanciful ruffled bowl - peach opal - nice
- ___ 164. Beaded Bullseye 12" vase - purple - pretty
- ___ 165. **Stippled Rays IC shaped compote - lavender or Wisteria - heavy stretch irid., on this rare piece, neat!**
- ___ 166. M'burg Fleur de Lis dome ftd IC shaped bowl - amethyst - tiny pinpoint on saw tooth base, better condition than most
- ___ 167. Wishbone ftd ruffled bowl - ice blue - scarce
- ___ 168. Wishbone ftd ruffled bowl - blue - very pretty, electric
- ___ 169. Wishbone ftd ruffled bowl - purple - also very pretty
- ___ 170. **Imperial Grape carafe - amber - pretty, very rare color, not many around**
- ___ 171. Imperial Grape carafe - purple - nice
- ___ 172. **Fruits & Flowers bonbon - ice green - scarce, nice**
- ___ 173. Fruits & Flowers bonbon - ice blue - tiny pinpoint on base
- ___ 174. Fruits & Flowers bonbon - aqua opal - pastel, nice
- ___ 175. Fruits & Flowers bonbon - green
- ___ 176. Fruits & Flowers bonbon - blue - electric
- ___ 177. Fruits & Flowers bonbon - marigold - dark, pretty
- ___ 178. Fruits & Flowers bonbon - marigold - pastel, pretty
- ___ 179. **Wishbone PCE bowl 10" bowl - smoke - very rare color, highly desirable**
- ___ 180. Orange Tree 9" plate - marigold - very flat
- ___ 181. Fenton's Peacock at Urn ruffled bowl - green - very pretty
- ___ 182. **Basketweave Open Edge large size square shaped basket - celeste blue - scarce color, pretty**
- ___ 183. **Peacocks PCE bowl w/ribbed back - green - nice, scarce color**

- ___ 184. Peacocks PCE bowl w/ribbed back - purple - has electric highlights
- ___ 185. Peacocks PCE bowl w/ribbed back - amethyst - many would call this lavender, pretty - epoxy on collar base.
- ___ 186. M'burg Zig Zag crimped edge ruffled bowl - amethyst - radium, nice
- ___ **187. Wreath of Roses round 4 pc. punch set - green - very pretty set**
- ___ 188. Peacock & Grape 9" plate - marigold - chip on back of point
- ___ 189. Three Row Open Edge IC shaped bowl - celeste blue - two cracks on edge
- ___ 190. Three Row Open Edge IC shaped bowl - white - crack in webbing
- ___ **191. Good Luck 9" plate w/ribbed back - green - scarce & pretty**
- ___ **192. Good Luck 9" plate w/ribbed back- marigold- very pretty example**
- ___ 193. Holly & Berry 7" ruffled bowl - purple - pretty
- ___ **194. Enameled Forget Me Not 7 pc. tankard water set - marigold - scarce, nice, one tumbler has nick**
- ___ 195. Hearts & Flowers ruffled compote - blue
- ___ 196. M'burg Rosalind 10" ruffled bowl - marigold - satin, nice
- ___ 197. Grape & Cable candle lamp shade - green
- ___ 198. Poppy Pickle dish - marigold - pretty
- ___ 199. Star of David ruffled bowl - purple - pretty
- ___ **200. Stippled Three Fruits PCE bowl w/ribbed back - green - very scarce color, nice**
- ___ **201. Stippled Three Fruits PCE bowl w/ribbed back - blue - scarce, tiny pinpoint between points**
- ___ 202. Stippled Three Fruits PCE bowl w/ribbed back - marigold - pastel irid., nice
- ___ 203. Ribbon Tie low 3 in 1 edge bowl - black amethyst - very scarce color, nice
- ___ 204. Mikado round compote - marigold
- ___ 205. Fruits & Flowers 10" ruffled bowl w/BW back - white - pretty, chip on base
- ___ 206. Wild Strawberry 10" ruffled bowl w/plain back - green - small chip on seam on collar base
- ___ 207. Singing Birds mug - purple
- ___ 208. Singing Birds mug - marigold = tiny nick on top edge.
- ___ **209. Peach butter dish, cvd sugar & creamer - white - very scarce, nice, small nick on bottom of butter dish base**
- ___ 210. Good Luck PCE bowl w/ribbed back - green - nice
- ___ 211. Rose Garden 9" vase - marigold - nice
- ___ 212. M'burg Peacock ruffled sauce - amethyst - radium, minor peeling on lower edge of ruffle
- ___ **213. M'burg Trout & Fly ruffled bowl - marigold - satin, pretty**
- ___ 214. Embroidered Mums ruffled bowl w/ribbed back - blue
- ___ 215. Embroidered Mums ruffled bowl w/ribbed back - marigold - pretty
- ___ 216. N's Flute 16" vase - green - 4 1/4" base
- ___ 217. Fine Cut & Roses rose bowl - ice blue
- ___ 218. Palm Beach banana boat shaped dish - amethyst- nice
- ___ 219. Apple Blossom Twigs 3 in 1 edge bowl- purple- nice
- ___ **220. N's Peacock at Urn ruffled bowl - marigold - dark & pretty, made from IC bowl**
- ___ 221. Drapery rose bowl- aqua opal- butterscotch, nice
- ___ 222. Drapery rose bowl - purple - nice
- ___ 223. Drapery rose bowl - marigold
- ___ 224. Shell & Sand ruffled bowl - lavender - pretty
- ___ **225. Plaid 9" plate - marigold - very scarce item**
- ___ 226. Leaf Chain ruffled bowl - aqua - scarce color, irid. on backside only, tiny nick on base
- ___ **227. Poppy Show 9" plate - marigold - very pretty, highly desirable**
- ___ 228. Wishbone & Spades ruffled sauce - purple
- ___ 229. Scales tri-cornered dish - peach opal
- ___ **230. Grape & Cable banana boat - ice blue - scarce, pretty**
- ___ **231. Grape & Cable banana boat - ice green - also a beauty**
- ___ 232. Grape & Cable banana boat - white - tiny pinpoint on edge
- ___ 233. Grape & Cable banana boat - green - small nick on inner edge
- ___ **234. Stippled and Banded Grape & Cable banana boat - blue - scarce, nice**
- ___ **235. Flowers & Spades 10" ruffled bowl - peach opal - very nice, rare pattern**
- ___ 236. Basketweave Open Edge small size ruffled hat - ice blue - super nice
- ___ 237. Basketweave Open Edge small size ruffled hat - ice green - nice
- ___ 238. Raspberry 7 pc. water set - green - nice
- ___ 239. Leaf Columns 6" squatty vase - marigold
- ___ 240. Butterfly & Berry spooner - green - scarce color
- ___ 241. Strawberry 9" plate w/BW back - purple - no damage, one strangely shaped point
- ___ 242. Strawberry 9" plate w/BW back - marigold - nice
- ___ 243. Target 7" squatty vase - white - nice
- ___ 244. Wishbone & Spades 6" plate - purple
- ___ **245. Diamond Point bushel basket - marigold - dark & super, a great example for these**
- ___ 246. Concord ruffled bowl - green
- ___ 247. Concord ruffled bowl - amethyst - nice
- ___ 248. Concord ruffled bowl - marigold - pretty
- ___ **249. M'burg Peacock 5 pc. berry set - amethyst - radium, scarce, tiny pinpoint on base of master bowl**
- ___ 250. Little Fishes ftd ruffled master berry bowl - marigold - scarce, nice

- ___ 251. **Tornado small size vase - marigold - always in demand**
- ___ 252. Swan salt - purple - small chips on base
- ___ 252 a. Three Fruits 9" plate with plain back - purple - tiny nicks on base
- ___ 253. **Dragon & Lotus ruffled bowl - peach opal - scarce color**
- ___ 254. Dragon & Lotus ruffled bowl - green - pretty
- ___ 255. Dragon & Lotus ruffled bowl - marigold
- ___ 256. N's Bushel Basket - blue
- ___ 257. Grape & Cable whiskey decanter - marigold - stopper has been cracked and glued
- ___ 258. Greek Key ruffled bowl w/ribbed back - blue - scarce color
- ___ 259. Greek Key ruffled bowl w/BW back - green - tiny nick on base
- ___ 260. **Palm Beach 5 pc. water set - marigold - scarce set, nice**
- ___ 261. Dugan Cherries crimped edge 6" plate - purple - a little deep
- ___ 262. Dugan Cherries crimped edge 6" plate - peach opal - tiny pinpoint on base
- ___ 263. **Stippled Strawberry 9" plate w/ribbed back - green - very scarce plate & nice**
- ___ 264. Lotus & Grape 6" ftd round bowl - aqua - scarce color, nice
- ___ 265. Pony ruffled bowl - ice green - strange manufacture spot on edge, iridized over, pinpoints on base
- ___ 266. **Pony 6 ruffled bowl - aqua - rare color, nice**
- ___ 267. Leaf Chain 9" plate - marigold - very nice
- ___ 268. Grape & Cable 2 sides up 6" dish - purple
- ___ 269. **Stippled Three Fruits Medallion spt ftd ruffled bowl - powder blue - this is a different color than anyone I have seen before, very pretty, might be a little opal in a couple of ruffles, very unusual bowl, neat!**
- ___ 270. Town Pump & Trough - green - signed Robert Hansen
- ___ 271. Fanciful 9" plate - blue - nice
- ___ 272. Stretch Glass 8 1/2" ftd bowl - tangerine
- ___ 273. Nippon 9" plate w/BW back - purple - repaired chip on point
- ___ 274. **Peacocks ruffled bowl w/ribbed back - aqua opal - even irid., a nice one**
- ___ 275. **Peacocks ruffled bowl w/ribbed back - green - scarce color & nice**
- ___ 276. Peacocks ruffled bowl w/ribbed back - marigold - super pretty
- ___ 277. **Apple Blossom Twigs IC shaped bowl - smokey lavender**
- ___ 278. Stippled Grape & Cable ruffled bowl w/ribbed back - marigold - very pretty
- ___ 279. **Orange Tree hatpin holder - green - rare color, couple small spots on feet, not bad for these**
- ___ 280. Apple Blossom Twigs low ruffled bowl - purple - very pretty
- ___ 281. Beaded Cable rose bowl - aqua opal - nice
- ___ 282. Fenton's Fine Rib 12" vase - aqua - scarce color
- ___ 283. Peacock & Grape ruffled bowl - peach opal - very pretty
- ___ 284. Orange Tree & Big Basketweave punch bowl bases - blue - Big Basketweave is cracked
- ___ 285. Nippon PCE bowl w/ribbed back - ice blue
- ___ 286. Pair of Ripple 8 1/2" vases - clambroth - 2 1/2" bases
- ___ 287. Carnival Hobstar sugar bowl base - purple - small internal burst near base on inside
- ___ 288. Cornucopia candlestick - ice blue
- ___ 289. Levay glass Dancing Ladies planter & juice tumbler - marigold
- ___ 290. **Chrysanthemum chop plate - purple - fantastic, can't get much better than this, rare!**
- ___ 291. Greek Key ruffled bowl w/ribbed back - marigold - couple of manufacture smooshed points
- ___ 292. N's Peacock at Urn master IC bowl - green - rare color, chip on collar base
- ___ 293. Two Fruits divided bonbon - green - scarce color
- ___ 294. Rose Show ruffled bowl - purple - very pretty, burst in base - small chips on roses
- ___ 295. Stippled Three Fruits 9" plate w/ribbed back - marigold - very pretty
- ___ 296. Fruits & Flowers bonbon - blue - pretty, nick on base
- ___ 297. **Embroidered Mums ruffled bowl w/ribbed back - marigold - very pretty**
- ___ 298. Diamond Points 12" vase - blue - scarce color, nice
- ___ 299. **Holly 9" plate - amethyst - scarce color**
- ___ 300. Three Row Open Edge 2 sides up dish - ice green - stretchy, scarce
- ___ 301. Three Row Open Edge 2 sides up dish - marigold
- ___ 302. Persian Medallion 10" 3 in 1 edge bowl - blue - nice, chip on edge
- ___ 303. Peacocks 9" plate w/ribbed back - blue - scarce
- ___ 304. M'burg Nesting Swan ruffled bowl - amethyst - radium, nice
- ___ 305. Plaid ruffled bowl - blue
- ___ 306. Dragon & Lotus ruffled bowl - peach opal - scarce color, small chip on collar base
- ___ 307. Drapery rose bowl - purple
- ___ 308. Butterfly & Berry hatpin holder - marigold - glue holding one foot one gave loose in shipping
- ___ 309. Ripple 11" vase - purple - 3 3/8" base
- ___ 310. Stippled Good Luck PCE bowl w/ribbed back - marigold
- ___ 311. Ripple 13" vase - purple - 3 3/8" base
- ___ 312. **Panther ftd centerpiece bowl - marigold - very rare & desirable**
- ___ 313. **Fenton Peacock at Urn 9" plate - blue - pretty example**

SEECK AUCTIONS
P.O. BOX 377
MASON CITY, IA 50401

PRESORTED
FIRST CLASS MAIL
US POSTAGE
PAID
MAIL EXPEDITORS

154.



245.

**2016 CARNIVAL
GLASS AUCTION**

Sat., Nov. 5 9:30 a.m.
Embassy Suites Airport Hotel
Kansas City, Missouri

T4 P1 51
LEE MARKLEY
BOX 306
MENTONE IN 46539-0306



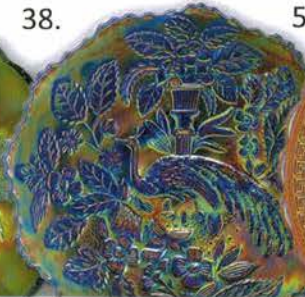
21.



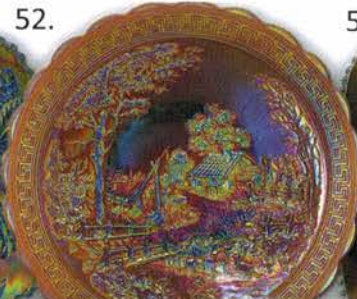
26.



38.



52.



55.



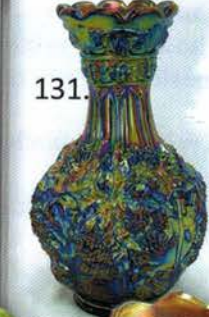
64a.



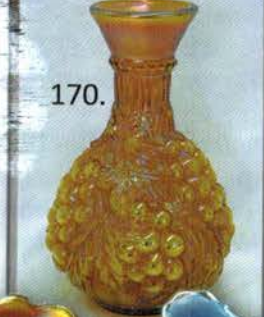
57.



131.



170.



65.



129.



147.



220.



269.

