

# Customer Appreciation 2 Day Carnival Glass Auction Greenville Auction Center

5239 ST RT 49 South Greenville Ohio 45331

November 4th at 3:30 PM and Nov 5th at 9:30 AM

Featuring the collections of Bette & the late Jim Chapman of New Bern NC,  
and Clara Henry of Anderson IN. ( Selling Friday)

With the late John & Patricia Magin of Rochester NY ( Selling Saturday )

**Session 1- LOT 1 - 300 > Friday Nov 4th 2016 at 3:30 PM**

We will have a Pizza Party plus Fairlawn goodies starting at 5:30 pm

**Session 2 LOT 301 TO END > Saturday Nov 5th 2016 at 9:30 AM**

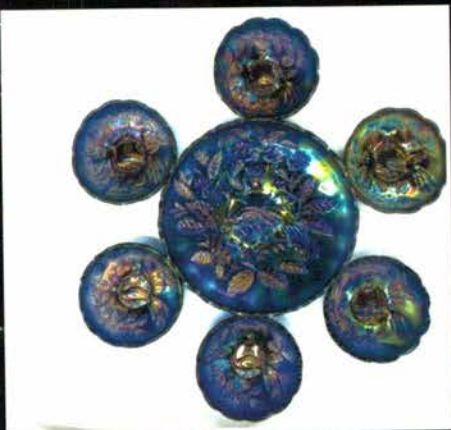
We will have Lunch by MaidRite at Noon on Saturday.

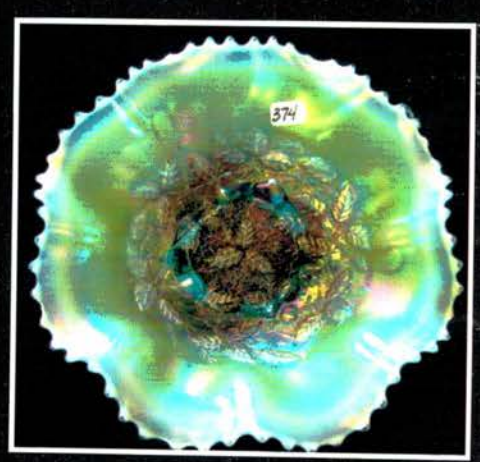
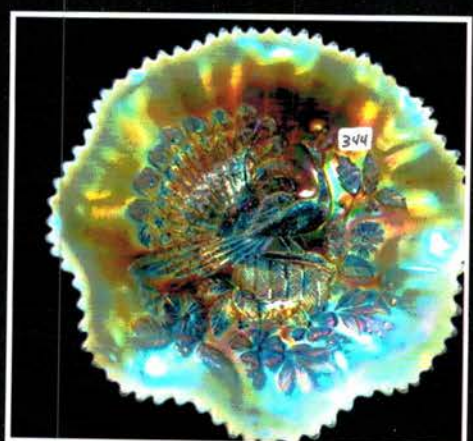
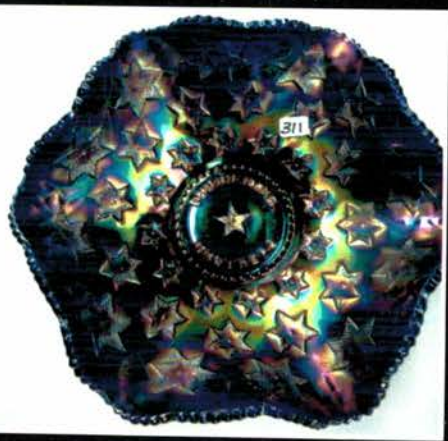
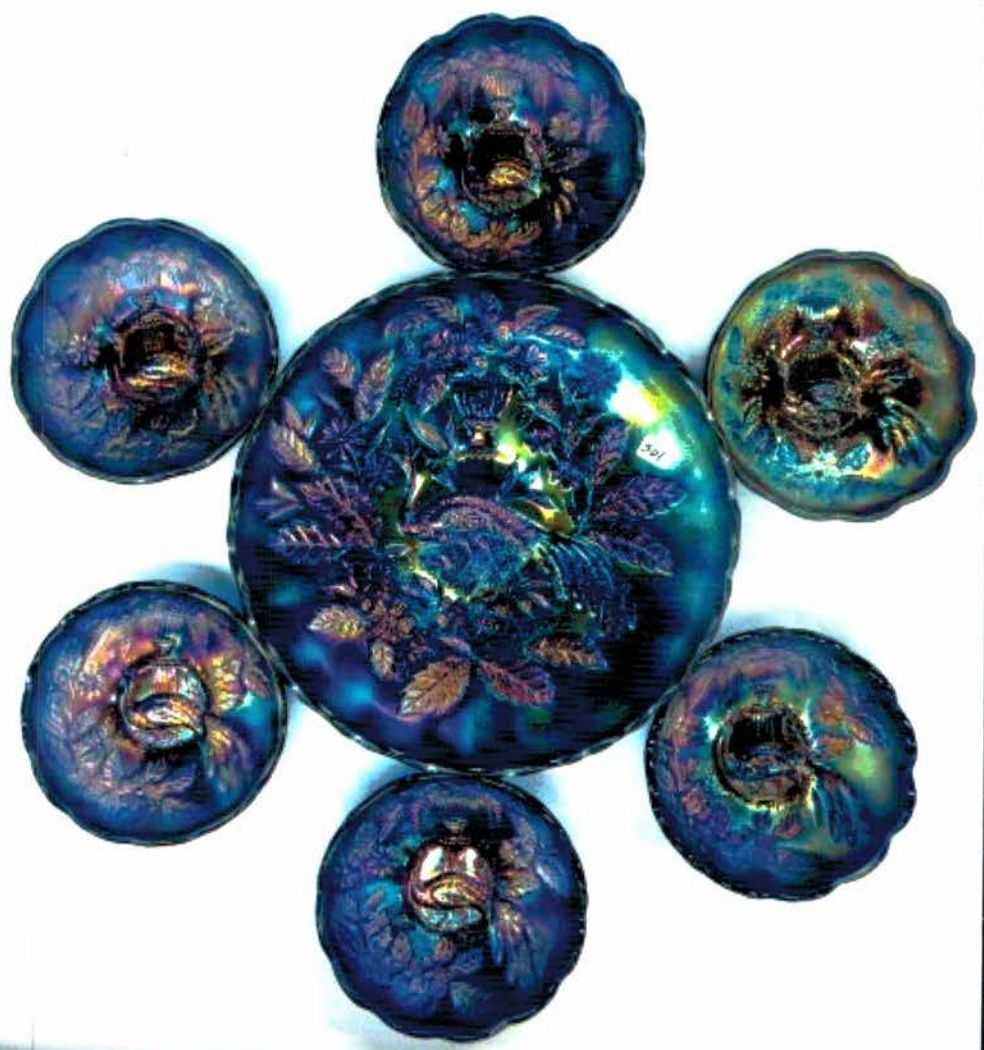
Terms: Cash or Check. Visa MC or Discover with 3% clerking fee.. No Buyer Premium

If you wish to use Proxibid please read the Proxibid terms.

SHIPPING: There will be a \$7.00per item fee ( Smaller items such as baskets will be \$4.00) plus estimated postage and insurance.

**Jim Wroda Auctions - Jim Wroda, Auctioneer**





November 4-5, 2016 Carnival Glass Listing

- 1 <sup>80c</sup> 73 FENTON BLUE 9" DRAGON LOTUS PLATE- SCARCE  
GOOD LOOKIN PLATE
- 2 350 Fenton 9" GREEN Autumn Acorn plate. Scarce
- 3 375 Fenton 9" GREEN Lotus & Grape plate- NICE!!!
- 4 <sup>270</sup> 270 FENTON 9" MARIGOLD PETER RABBIT PLATE RARE  
AND ALWAYS SOUGHT AFTER!
- 5 290 FENTON 9" PURPLE BIRMINGHAM AGE HERALD  
PLATE GREAT PRESSING AND DETAIL... SHARPEST  
ONE I HAVE SEEN <sup>200</sup>
- 6 375 Fenton 9" mari Spectors Dept store Heart & Vine plate. DARK!
- 7 175 Fenton 9" blue Peacock at Urn plate
- 8 55 Fenton 9" mari Peacock at Urn plate- Light irid
- 9 180b WOW!! FENTON 7" BLUE 1911 ELKS PLATE GREAT  
DETASIL AND COLOR!!!
- 10 430 Fenton 7" blue 1910 Detroit Elks ruffled bowl. Scarce
- 11 225 Nwood 9" blue Peacocks plate w/ elec hilights
- 12 75 Nwood 9" white Peacocks plate w/ frosty irid NICE
- 13 95 Nwood 9" purple Good Luck plate
- 14 400 Nwood 9" Ice GReen Embroidered Mums plate Good color for  
this... Usually silvery--- not this one
- 15 115 Nwood 9" blue Stippled 3 fruits plate.
- 16 95 Nwood 9" blue Stippled 3 Fruits plate w/ elec hi-lights. rubs on  
fruit
- 17 125 Nwood 9" smoky lav Stippled 3 Fruits plate rubbing on fruit
- 18 375 Nwood 9" GREEN Stippled Strawberry plate- NICE!!
- 19 225 Nwood 9" GREEN Greek Key Plate
- 20 300 NWOOD 9" EMERALD GREEN 3 FRUITS PLATE W/  
PLAIN BACK WOW!!
- 21 25 NWOOD 9" SMOKIN MARI STIPPLED 3 FRUITS PLATE  
HOT LOT!
- 22 NWOOD 9" PASTEL AQUA OPAL STIPPLED 3 FRUITS  
1300 PLATE STUNNING COLOR!
- 23 125 Nwood 9" AO Peacocks ruffled bowl. WOW!
- 24 325 Nwood 8.5" AO Rose SHow ruffled bowl. LOADED
- 25 400 Nwood 8.5" pastel AO Rose Show ruffled bowl HOT LOT!
- 26 400 Nwood 8.5" AO G&C stippled PCE bowl. Great color
- 27 75 Nwood 8" AO 3 fruits stippled ft'd bowl ALL OF THIS AO IS  
LOADED W OPAL!
- 28 475 Fenton 8.5" AO Vintage 3-1 edge bowl.
- 29 125 Nwood AO Drapery rosebowl
- 30 125 Nwood AO Beaded Cable rosebowl
- 31 85 Nwood Leaf & Beads Cable rosebowl
- 32 85 Nwood AO Bushel Basket- Sweet
- 33 385 NWOOD AO SINGING BIRDS MUG. VERY NICE AND  
BARE
- 34 325 Fenton AO Blackberry JIP CRE hat RARE combination
- 35 300 NWOOD AO FINE CUT & ROSES ROSEBOWL-
- 36 325 NWOOD PASTEL AO POPPY PICKLE DISH. SUPER  
PASTEL IRID
- 37 155 Nwood AO Fruits & Flowers compote. Scarce
- 38 375 Nwood AO Daisy & Drape 6" vase- flared
- 39 120 Nwood AO Dandelion mug- Scarce
- 40 400 Nwood IB Dandelion KNights Templar mug
- 41 Nwood IG Dandelion KNights Templar mug <sup>275</sup>
- 42 Nwood 8" IB Poppy SHow ruffled bowl <sup>275</sup>
- 43 Nwood IB Poppy pickle dish- scarce <sup>175</sup>
- 44 Nwood IB Drapery candy dish- NICE! <sup>45</sup>
- 45 Nwood IB POINSETTIA AND LATTICE FT'D BOWL <sup>500</sup>  
SUPER IRID ON A RARE AND SOUGHT AFTER BOWL
- 46 Nwood IB 9" Embroidered Mums ruffled bowl bit silvery <sup>200</sup>
- 47 Nwood IB Peacock at Fountain compote- Scarce <sup>450</sup>
- 48 Nwood IG Peacock at Fountain compote- Scarce GREAT  
COLOR! <sup>300</sup>
- 49 Nwood white Peacock at Fountain compote <sup>75</sup>
- 50 Nwood elec <sup>EA</sup> Peacock at Fountain compote ALL  
SCARCE COMPOTES <sup>300</sup>
- 51 THE BEST NWOOD HEART & FLOWER COMPOTE IN  
MARIGOLD ON MOONSTONE. SUPER RARE AND  
EXTREMELY PRETTY. HAVE NOT SEEN A BETTER  
ONE. THIS WAS SHOWN AT ACGA AND EVERYONE  
AGREED IT WAS TOPS! <sup>2400</sup>
- 52 Nwood AO Heart & Flowers compote <sup>175</sup>
- 53 Nwood IB Heart & Flowers compote- frosty <sup>215</sup>
- 54 Nwood white Heart & Flowers compote- frosty <sup>50</sup>
- 55 Nwood blue Heart & Flowers compote <sup>135</sup>
- 56 Fenton 7" RED Acorn ruffled bowl <sup>115</sup>
- 57 Fenton RED PANTHER 5" FT'D SAUCE- RARE <sup>255</sup>
- 58 Fenton RED WATERLILY 5" FT'D SAUCE- NICE <sup>225</sup>
- 59 Fenton RED 6" Stippled Rays ICS bowl <sup>125</sup>
- 60 Fenton RED 7" G&C deep round bowl <sup>110</sup>
- 61 Fenton RED Orange Tree Shaving Mug- SCARCE! GREAT  
COLOR! <sup>900</sup>
- 62 Fenton RED 5" holly ruffled hat <sup>70</sup>
- 63 Fenton RED 5" OE hat <sup>75</sup>
- 64 Fenton RED Holly compote <sup>200</sup>
- 65 NWOOD 19" PURPLE TREE TRUNK FUNERAL VASE W/  
GREAT ELEC COLORS THROUGHOUT. HAS A 7"  
DIFFERENCE FROM FRONT OF MOUTH TO BACK..  
FANTASTIC VASE! WAY PAST NORMAL! <sup>1500</sup>
- 66 Nwood 9" Mari Rose Show plate <sup>205</sup>
- 67 Nwood 9" LIME GREEN ROSE SHOW PLATE- RARE AND  
LOADED W COLOR <sup>425</sup>
- 68 Nwood 9" IG Rose Show plate- Scarce <sup>350</sup>
- 69 Nwood 9" elec purple Rose Show plate- Scarce VERY  
PRETTY! <sup>250</sup>
- 70 Nwood 9" IB Rose SHow plate. Scarce and pretty <sup>375</sup>
- 71 Nwood 9" elec blue Rose Show plate <sup>625</sup>
- 72 Nwood 9" White ROse SHow plate <sup>150</sup>
- 73 Nwood 9" blue Poppy Show plate- Scarce and always  
desireable <sup>500</sup>
- 74 Nwood 9" dark mari Poppy Show plate <sup>475</sup>
- 75 Nwood 9" Ice Green Poppy Show plate <sup>400</sup>
- 76 Nwood 9" Ice blue Poppy Show plate Scarce <sup>275</sup>
- 77 Nwood 9" white Poppy Show plate Frosty <sup>110</sup>
- 78 Nwood 8.5" IB Poppy SHow bowl <sup>450</sup>

- 79 Nwood 8.5" elec blue Poppy SHow ruffled bowl WOW! 300
- 80 Nwood 8.5" GREEN Rose Show ruffled bowl VERY SCARCE 300
- 81 Nwood 8.5" AQUA ROSE SHOW BOWL- RARE COLOR 300
- 82 Nwood IG Fruits and Flowers compote 145
- 83 Nwood IB Fruits and Flowers compote 125
- 84 Nwood GREEN Fruits and Flowers compote 95
- 85 NWOOD ICE GREEN BEADED CABLE ROSEBOWL VERY RARE ROSEBOWL 975
- 86 Nwood IB Beaded Cable rosebowl. Scarce 2,555
- 87 Nwood elec blue Beaded Cable rosebowl 65
- 88 Nwood green Beaded Cable rosebowl silvery 20
- 89 Nwood purple Fine Cut & Roses rosebowl 75
- 90 Nwood IB Fine Cut & Roses rosebowl 165
- 91 Nwood LITE IB Fine Cut & Roses rosebowl Nice color 65
- 92 Nwood frosty white Fine Cut & Roses rosebowl 65
- 93 Nwood green Fine Cut & Roses rosebowl 35
- 94 Nwood mari Fine Cut & Roses rosebowl super tight tuck 35
- 95 2 Dugan 5" PO bowls- Petal & Fan, Ski Star 25
- 96 Dugan PO Honeycomb rosebowl 45
- 97 Fenton aqua Waterlily fl'd sauce 40
- 98 RARE NWOOD PURPLE GRAPE AND CABLE COMPLETE DRESSER SET TO INCLUDE PIN TRAY- DRESSER TRAY- 2 COLOGNES- PERFUME- HATPIN HOLDER. WHENS THE LAST TIME YOU COULD BUY A WHOLE SET TOGETHER? NEVERRRRRR!! 700
- 99 NORTHWOOD SAPPHIRE ORIENTAL POPPY TANKARD. TREMENDOUS COLOR.. ONLY ONE KNOWN AND IT IS PRETTY!!! 4000
- This is NOT just a dark blue-- it is TRUE Sapphire!
- 100 NWOOD WHITE LEAF & BEADS ROSEBOWL SUPER FROSTY 115
- 101 Nwood white 8 sided bushel basket 40
- 102 Nwood WHITE ORIENTAL POPPY 7 PC TANKARD SET WELL MATCHED AND FROSTY. 1600-2000 700
- 103 Nwood 11" WHITE G&C ICS bowl- Scarce color 95
- 104 NWOOD WHITE WISHBONE SINGLE LILY EPERGNE RARE 350
- 105 NORTHWOOD WHITE WIDE PANEL 4 LILY EPERGNE. FROSTY IRID. EXCELLENT CONDITION.! RARE 2200
- 106 Nwood purple Oriental Poppy 7 pc tankard set. Again- well matched 250
- 107 Fenton BLUE Milady 7pc tankard set RARE to find complete matched set 350
- 108 HOLY SMOKIN' DUGAN ELEC PURPLE HEAVY IRIS 7PC TANKARD SET. THIS SET IS ABSOLUTLEY ON FIRE! 1800
- 109 Nwood IB Grape Arbor 7pc tankard set- Scarce 375
- 110 NWOOD ICE GREEN G&C CENTERPIECE BOWL W/ POINTS IN. SCARCE 250
- 111 Nwood purple G&C banana boat. good color 75
- 112 RARE NWOOD PURPLE G&C 8PC WHISKEY SET. VERY RARE TO FIND WHOLE SET! 925
- 113 Imperial elec purple Octagon 8pc wine set. REAL NICE COLOR! 875
- 114 Nwood 9" elec blue Good Luck PCE bowl. 100
- 115 Nwood ELEC PURPLE Dandelion tankard WOOOOWWW! 350
- 116 Mburg 10" GREEN Peacock at Urn ICS bowl- Bee No Beads 200
- 117 Mburg 8" purple Big Fish ICS bowl. Scarce 350
- 118 Mburg mari Hobnail Swirl Spittoon. NICE! 225
- 119 Mburg 6" rad purple Holly Whirl ruffled bowl 65
- 120 Mburg 9" rad purple Whirling Leaves ICS bowl Scarce shape 220
- 121 Fenton VASELINE HORSE MEDALLION nut bowl 210
- 122 Dugan purple Fishnet single lily epergne w/ extra lily. No issues 115
- 123 Dugan purple Stork & Rushes mug 25
- 124 Nwood 7" purple Diamond Points vase 25
- 125 Australian 5" black amy Kangaroo berry bowl 75
- 126 Nwood 6" purple Peacock at Urn ICS bowl 85
- 127 Fern Brand Chocolates purple 6" 2 side up plate (card tray) 175
- 128 DUGAN 10" PURPLE FARMYARD RUFFLED BOWL 1450 3500
- 129 Dugan 10" PO Ski Star ruffled bowl 65
- 130 Fenton ELEC BLUE Orange Tree loving cup One of the best! 245
- 131 Blackberry Block / Butterfly & Berry blue tumblers 40
- 132 Fenton 8" blue Captive Rose ruffled bowl 25
- 133 Fenton 9" purple Little Flowers 3-1 edge bowl 45
- 134 Group of carnival glass Hatpins- see photo include Bat 195
- 135 3 Novelty Swans to include PO- purple- Celeste 65
- 136 Celeste Blue Concave Diamond 8pc tankard set 150
- 137 Dugan WHITE Dahlia 7pc water set 475
- 138 Imp green Field Flower water pitcher 35
- 139 Imp Grape purple water carafe 40
- 140 Nwood purple G&C 2 handle cookie jar 75
- 141 Nwood purple Presznick Museum humidor 35
- 142 Dugan purple Dahlia Butterdish 195
- 143 Dugan white w/ gold trim Dahlia Butterdish 85
- 144 Nwood mari Singing Birds butterdish 55
- 145 Nwood mari Cherry Cable butterdish 80
- 146 Fenton blue Orange Tree butterdish 265
- 147 Fenton white Orange Tree butterdish 210
- 148 Nwood white Peach butterdish 115
- 149 Mburg rad purple Country Kitchen butterdish 155 150
- 150 Dugan white painted Wreath Cherry butterdish RARE 185
- 151 Nwood green Springtime butterdish- RARE 185
- 152 Nwood Ice Blue Peacock at Fountain butterdish- RARE 275
- 153 Cambridge Inverted Strawberry purple butterdish 105
- 154 US Glass white Cosmos & Cane butterdish- RARE and FROSTY! 25
- 155 Nwood blue Peacock at Fountain butterdish lid (Base is for enameled flowers) 50
- 156 Nwood purple G&C Butterdish. 25
- 157 Nwood purple G&C Butterdish. 4
- 158 Nwood purple Peacock at Urn 7pc ICS set. RARE SET TO FIND 250

- 159 Nwood purple Acorn Burr 10 pc punch set, Scarce 450
- 160 Blue Kittens Cereal bowl- 4 side plate- card tray All one money
- 161 MArigold carnival glass Kittens Cereal bowl- card tray - cup- 4 side plate, All one money 400
- 162 MArigold carnival glass Kittens ruffled bowl -cup- 4 side plate- flat plate, All one money 105
- 163 Kittens Marigold Plate- Cup- Toothpick-ruf. bowl All one money 185
- 164 Kittens Marigold Plate- Cup- card tray- ruf bowl. All one money 100 100
- 165 RARE MARI FENTON MINIATURE BUTTERFLY SUPER DARK COLOR! 1100
- 166 RARE BLUE FENTON MINIATURE BUTTERFLY NICE COLOR FOR THIS. HARD TO FIND 1 IN AN AUCTION LET ALONE 2! 1105
- Both have the snapped pontil as it should- NOT DAMAGE
- 167 Cambridge green large Buzz Star cruet w/ stopper 105
- 168 Nwood purple Town Pump. Above avg irid 750
- 169 Nwood purple G&C Sweetmeat 75
- 170 Nwood green G&C candlesticks 95
- 171 Pair Nwood mari G&C Candlelights w/ shades 475
- 172 RARE Nwood purple Springtime complete table set. 325
- 173 Nwood purple Acorn Burr complete table set 275
- 174 RARE Nwood G&C cup and saucer set. 135
- 175 Nwood 10" white Peacock at Urn ICS bowl One of the most colorful we have sold for white 170
- 176 RARE NWOOD 8.5" SAPPHIRE STIPPLED 3 FRUITS RUFFLED BOWL. GREAT COLOR!. NO TRADE UP NEEDED! 1300
- 177 Nwood 8.5" Green Good Luck ruffled bowl w/ BW back Bright center 75
- 178 West BO 8" Carolina Dogwood ruffled bowl I have said it alot- 105 - I think West BO is prettiest color in CG. ( just my opinion)
- 179 RARE LIME GREEN COMPOTE W/ TRICORNER CRE TOP. Have never seen one with this top before. 245 Daisy Regain
- 180 Persian pearl stretch Cornucopia candlesticks 50
- 181 Fenton vaseline and powder blue Peacock at Urn compotes 60
- 182 Fenton 10" blue Chrysanthemum ft'd bowl 130
- 183 Fenton Orange Tree fruit bowl in blue 65
- 184 Mari Crucifix Candlestick- Scarce 160
- 185 Fenton blue Zig Zag hand enameled water set 400
- 186 Fenton 7pc BLUE ORANGE Tree Punch set 140
- 187 Nwood mari peacock at Fountain punch bow and base 180
- 188 Nwood elec purple Memphis fruit set NICE COLOR! 220
- 189 Nwood purple G&C 7pc tankard set. Scarce 350
- 190 Nwood purple Acorn Burr 7pc water set Nice elec hilights. 375
- 191 IMPERIAL ELEC AMBER GRAPE 9" PLATE WHAT A KNOCKOUT! 350
- 192 Imp AMBER Pansy dresser tray w. great color! 350 85
- 193 West MMG Fan Fold compote and Daisy Wreath plate 55
- 194 Nwood mari G&C punch base 40
- 195 RARE NWOOD SMOKE G&C STIPPLED PUNCH BASE 300
- 196 Nwood mari Memphis punch base 4.89
- 197 Nwood IB Peacock at Fountain berry bowl 50
- 198 Tray lot of Marigold carnival glass as shown 30
- 199 Fenton purple <sup>Super Rose</sup> Huckle compote and powder blue Acorn bowl 55
- 200 Heavy Iris and Dandelion tumblers- 1 money 40
- 201 Nwood purple and mari Peacock at FOUNTAIN punch bases. 1 money 40
- 202 Tray lot mari carnival glass as shown 35
- 203 Tray lot of Peach Opal Dugan carnival glass as shown 105
- 204 Brock. blue Rose Garden flower arranger ( we do not have the wire top) 35
- 205 Northwood Elec Green Acorn Burr 8pc punch set Super color! Scarce 3500
- 206 Northwood marigold Peacock at Fountain 8pc punch set. GREAT COLOR! 275
- 207 Northwood bright mari Acorn Burr 8 pc punch set- Another beauty from the Chapman collection 425
- 208 Northwood GREEN MEMPHIS PUNCH SET W/ 6 CUPS. THIS IS AS CLOSE TO EMERALD GREEN AS YOU WILL FIND 725
- 209 Northwood dark mari Memphis 10 pc fruit set This is as close to pumpkin as you will find! BEAUTY!! 130
- 210 Northwood 135 Dark Mari grape Arbor 7pc tankard set. Sweet!
- 211 Northwood purple GREEK KEY 7 PC WATER SET RARE AND REAL NICE! 650
- 212 Northwood BLASTING ELEC BLUE PEACH 7PC WATER SET.. THE BEST WE HAVE EVER SOLD! WELL MATCHED! 1800
- 213 Northwood EM/ GREEN SINGING BIRDS 7PC WATER SET. To be fair... the pitcher and 4 tumblers are GREAT! 2 tumblers would be "green" 550
- 214 Northwood purple Oriental Poppy 7pc tankard set. Hard to find a set these days 310
- 215 Fenton BLUE Orange Tree Scroll 7pc tankard set. VERY RARE SET>> AND REAL PRETTY! 550
- 216 DUAGN ELEC PURPLE VINEYARD WATER PITCHER WOW! AS GOOD AS WE HAVE SEEN! 200
- 217 Fenton mari Orange tree Orchard 7 pc water set Dark 250
- 218 Fenton BLUE Orange tree Orchard 7 pc water set Scarce 275
- 219 RARE GREEN SPRINGTIME 7PC WATER SET EXCEPTIONAL COLOR! VERY HARD TO FIND SET! 1500
- 220 BLASTING HOT ELEC PURPLE IMPERIAL GRAPE 7PC WATER SET. WELL MATCHED! 250
- 221 Fenton 17" GREEN RUSTIC FUNERAL VASE. AWESOME COLOR! 800
- 222 Fenton 17" PURPLE RUSTIC FUNERAL VASE. GOOD LOOKING VASE 550
- 223 Fenton 17" marigold Rustic Funeral vase. SUPER DARK IRID 425
- 224 FENTON 19" WHITE RUSTIC FUNERAL VASE. VERY FROSTY IRID. RARE 650
- 225 Northwood AO Fine Cut & Roses rosebowl. RARE and Nice 325
- 226 Northwood AO Singing Birds mug. SUPER!! 300
- 227 Fenton WHITE Orange Tree hatpin Holder- VERY FROSTY! 550
- 228 Millersburg purple Wild Rose lamp- Scarce Lamp 1100 500
- 229 SMOKE Imperial Grape carafe/ vase. OUTSTANDING IRID! 285
- 230 Northwood PERSIAN BLUE HEART & FLOWER COMPOTE VERY RARE!
- 231 Northwood LIME GREEN HEART & FLOWER COMPOTE VERY RARE!
- 232 Northwood GREEN HEART & FLOWER COMPOTE SCARCE W/ NICE COLOR

- 233 Northwood ELEC PURPLE Greek Key Tumbler
- 234 Northwood elec purple Oriental Poppy tumbler
- 235 Frame of 3 Carnival Glass Buttons as shown
- 236 Frame of 6 Carnival Glass Buttons as shown
- 237 Frame of 6 Carnival Glass Buttons as shown
- 238 Frame of 11 Carnival Glass Buttons as shown including Hoot owl! Check out these frames- there r some RARE buttons here.. Some of Bette's favorites!
- 239 Frame of 18 carnival glass buttons as shown WOW!!
- 240 Fenton 9"BLUE Orange Tree plate- BRIGHT!
- 241 Fenton 9" blue Peacock at Urn plate- NICE
- 242 Fenton 9" blue Peacock & Grape plate- Scarce
- 243 Fenton BLUE LEaf Chain plate- Scarce N Pretty
- 244 Fenton 9" blue Holly plate- Nice
- 245 Fenton 9" purple Holly plate- Scarce plate
- 246 Fenton GREEN Captive Rose plate. Scarce
- 247 Fenton 9" purple Captive Rose plate. NICE!
- 248 Northwood 9" SAPHIRRE THREE FRUITS PLATE. VERY RARE AND SUPER PRETTY!
- 249 Northwood 9" LIME GREEN THREE FRUITS PLATE. ANOTHER RARE AND SUPER PRETTY PLATE.
- 250 Fenton 7" DARK MARI Illinois Soldiers & Sailors plate. Very hard to find.. DARK COLOR!
- 251 Fenton 9" DARK MARI SPectors Dept store plate GREAT IRID! w/ photo of store
- 252 Imp 9" elec purple Grape plate. WOW!! HOT IRID
- 253 Northwood 9" frosty white Peacocks plate w/ BW back.
- 254 Northwood 9" elec Blue Peacocks plate. Nice Multi-color irid. BEAUTY!
- 255 Northwood 9" elec green / emerald G&C stippled plate-SMOKIN!!!
- 256 Northwood 9" green NIPPON plate. Good Lookin plae
- 257 Northwood 9" purple Good Luck plate
- 258 Northwood 9" Ice blue Poppy Show plate. Awesome irid!
- 259 Hatpin- BA BAT
- 260 Hatpin- Lav. Top o Morning
- 261 Hatpin- -----GET PATTERN
- 262 Northwood AO 8" ROse Show ruffled bowl SHARP!
- 263 Northwood dark IG 8" ROse Show ruffled bowl pushing lime green. NICE
- 264 Northwood Ice Blue 8" ROse Show ruffled bowl Scarce and nice!
- 265 Fenton 9" BRICK RED Holly 8 ruffled bowl NO YELLOW!!!
- 266 Fenton 8.5" red Peacock & Grape ICS bowl. HAs yellow tips. Neat bowl
- 267 Imp 10" elec purple Grape ruffled bowl WOWWWSSERRRR!!
- 268 Northwood lime green G&C Centerpiece bowl points up.
- 269 Mordini Price Guides
- 270 RARE FENTON 7.5" BLUE RUSTIC "PINCHED" JARDINERE. EXCEEDINGLY RARE MAYBE A OAK! HAS THE SAME CRACK ACROSS THE BASE THAT WAS THERE 107 YEARS AGO!
- 271 FENTON 6.5" DIAMOND RIB MARIGOLD JARDINERE RARE!
- 272 IMP? MARIGOLD WIDE PANEL LADIES SPITTOON. SUPER CUTE AND SMALL 2" X 3"!
- 273 FE NTON MARIGOLD WATERLILY SPITTOON MADE FROM TUMBLER- RARE!
- 274 Northwood SAPHIRRE CORN VASE- WOW!
- 275 Northwood IB Corn vase- Lots color!
- 276 Northwood mari Town Pump- a bit silvery on base
- 277 Northwood purple Town Pump, Very nice color!
- 278 IMPERAIL AMBER HOMESTEAD CHOP PLATE W/ FABULOUS IRID!
- 279 Imperial ELEC PURPLE Homestead chop plate Great color and pressing
- 280 Imperial mari Homestead chop plate. Nice stretch effect.
- 281 IMPERIAL ELEC PURPLE CHRYSANTHEMUM CHOP PLATE- HOT LOT!
- 282 Imperial mari Chrysanthemum chop plate. Scarce
- 283 Imperial whie Chrysanthemum chop plate. radium white!
- 284 Dugan 6" purple Wishbone & Spades plate NICE!
- 285 Imperial 6" elec purple Grape plate. NICE!!
- 286 Northwood IB Poppy pickle dish-
- 287 Northwood AO Poppy pickle dish- SCARCE!
- 288 DUGAN 11" GARDEN PATH VAR. CHOP PLATE IN PEACH OPAL. VERY RARE PLATE.
- 289 DUGAN 12.5" PERSIAN GARDEN CHOP PLATE IN PEACH OPAL. ANOTHER RARE DUGAN CHOP PLATE.
- 290 DUGAN 11" ELEC PURPLE WISHBONE & SPADES CHOP PLATE BUY IT!!!!
- 291 IMPERIAL 11" ELEC PURPLE HATTIE CHOP PLATE ANOTHER SMOKER!
- 292 Fenton purple Orange Tree loving cup
- 293 Fenton GREEN Orange Tree loving cup
- 294 Dugan 7" purple Apple Blossom Twigs plate
- 295 Fenton 6" blue Sailboats plate- RARE
- 296 Dugan 11" elec purple Persian Garden 8 ruffled bowl. SWEETTTT!
- 297 Northwood purple G&C master berry bowl
- 298 IMPERIAL ELEC PURPLE LUSTRE ROSE WATER PITCHER WOWWWWWW!!!
- 299 Imperial elec purple Open ROse tumbler
- 300 MILLERSBURG PURPLE GRAPE LEAVES RUFFLED BOWL. THIS ENDS FRIDAYS SESSION.. WE WILL RESUME SATURDAY MORNING AT 9:15 WITH THE MAGIN COLLECTION OF ROCHESTER, NEW YORK.
- John was a LONG time collector, and as you can see, had an eye and bought for color. a
- 301 Mburg 9" radium mari Strawberry Wreath vari SQUARE bowl- KNOCKOUT COLOR!
- 302 Mburg 10" rad purple Peacock at urn ruffled bowl. No bee or beads
- 303 Mburg 10" mari Peacock at Urn ICS bowl Bee no Beads
- 304 Mburg 10" rad purple Blackberry Wreath ruffled bowl
- 305 Mburg 10" GREEN PEACOCK AT URN CRE RUFFLED BOWL, NO BEE OR BEADS. RARE SHAPE
- 306 Mburg 7" rad purple Peacock at Urn Shotgun 3-1 edge bowl. Scarce

- 307 Mburg 8" rad purple Strawberry Wreath square bowl Scarce size
- 308 Mburg 8" rad purple Holly Sprig vari CRE ruffled bowl.
- 309 Mburg 9" green Primrose ICS bowl. Scarce
- 310 Mburg 8" grape Wreath vari CRE ruffled bowl. NICE!
- 311 MBURG 10" BLUE BERNHEIMER BROTHERS MANY STARS RUFFLED BOWL. RARE W/ NICE COLOR
- 312 Mburg 9" GREEN Peacock at Urn master flared berry bowl. Scarce color for this.
- 313 Mburg 10" rad purple Nesting Swans ruffled bowl Good Lookin bowl
- 314 Mburg 10" rad purple Whirling Leaves ruffled bowl
- 315 Mburg 9" green Rays & Ribbons ruffled bowl
- 316 Mburg 10" satin mari Peacock at Urn ICS bowl. One of the best satin bowls we have seen
- 317 Mburg 10" rad purple Strawberry Wreath square deep bowl. Beautiful color
- 318 Mburg green Boutonniere compote
- 319 Mburg 10" purple Whirling Leaves ruffled bowl
- 320 Mburg 10" rad mari Many Stars 3-1 edge bowl- Scarce
- 321 Mburg 10" satin purple Nesting Swans ruffled bowl
- 322 Mburg 8.5" purple Blackberry Wreath ICS bowl
- 323 Mburg 10" rad mari Fleur de lys ruffled bowl w/ collar base
- 324 2 mburg Peacock Tail ruffled compotes MARI & purple
- 325 Mburg 5" green & mari Blackberry Wreath bowls 1 money
- 326 2 Mburg rad green 5" Cosmos ICS bowls
- 327 RARE Mburg GREEN WILD ROSE OIL LAMP. ALWAYS A FAN FAVORITE OF MILLERSBURG GLASS
- 328 2 Mburg 8" green Blackberry Wreath ruffled bowls
- 329 Mburg 10" rad purple Fluer De Lys ICS collar base bowl. Scarce
- 330 Mburg 8" green Trout & Fly ruffled bowl.. Scarce
- 331 Mburg 10" rad purple Primrose ruffled bowl
- 332 Mburg 10" rad mari Primrose ruffled bowl
- 333 Mburg purple Diamonds water pitcher
- 334 Mburg purple Diamonds 5pc water set.
- 334a Mburg smokey lav. Diamonds tumbler odd color
- 335 Mburg mari Hobnail Swirl rosebowl.
- 336 Mburg rad purple Hobnail Swirl rosebowl. PRETTY!
- 337 Mburg OLIVE GREEN NIGHT STARS BON BON WHAT A LOOKER! WOW!
- 338 Mburg 5" rad purple Peacock at Urn flared berry
- 339 Mburg 9.5" rad purple Peacock at URn ICS bowl Base has small smooth area..
- 340 Mburg bright mari Seaweed 3-1 edge bowl. Sharp!!
- 340a Imperial BLASTING ELEC PURPLE 8.5" Star of David ruffled bowl- SMOKIN COLOR!
- 341 Nwood 9" purple Peacock 's PCE bowl. Nice
- 342 Nwood 8.5" blue Peacocks ruffled bowl
- 343 NWOOD 8.5" AO PEACOCKS RUFFLED BOWL. THIS IS A BEAUTIFUL BOWL!
- 344 NWOOD 8.5" AO PEACOCKS RUFFLED BOWL. HAS WONDERFUL PASTEL IRID
- 345 Nwood 8.5" mari Peacocks stippled ruffled bowl
- 346 Nwood 9" mari Peacocks plate. Super bright irid!
- 347 Nwood 8" green Wishbone ft'd bowl. Scarce
- 348 Nwood 8.5" BLUE Wishbone ft'd bowl. Scarce not many around
- 349 Nwood 8.5" GREEN Wishbone ft'd bowl. This is real nice green bowl!
- 350 Nwood 8" mari Wishbone flared ft'd bowl
- 351 Nwood 8" purple Wishbone ft'd ruffled bowl
- 352 Nwood 8.5" green Wishbone ft'd bowl NICE!
- 353 Nwood 9" green Wishbone PCE bowl. Scarce
- 354 Nwood 8.5" AO Peacocks ruffled bowl SCARCE!
- 355 Nwood 9" mari Poinsettia & Lattice ft'd bowl. Very sought after pattern
- 356 Nwood 9" purple 3 Fruits PCE bowl
- 357 Nwood 8.5" green 3 Fruits PCE bowl w/ BWB
- 358 Nwood 8.5" green Strawberry PCE bowl. w/ PB. Looks good
- 359 Nwood 8.5" elec blue Good Luck PCE bowl. NICE!
- 360 Nwood 8.5" mari Good Luck PCE bowl
- 361 Nwood 8.5" mari Stippled G&C PCE bowl. Here's a pretty one!
- 362 nwood 8.5" mari G&C PCE bowl w/ PB
- 363 Nwood 8.5" dark mari Heart & Flower PCE bowl Scarce
- 364 Nwood 9" purple 3 Fruits plate w/ BW back
- 365 Nwood 8" purple 3 Fruits dome ft'd bowl
- 366 Nwood 7" purple 3 fruits dome ft'd bowl kinda in nut bowl shape- ruffled
- 367 Nwood 8.5" AO stippled 3 Fruits ft'd ruffled bowl has LOTS of OPAL!
- 368 Nwood 8.5" dark mari Stippled 3 Futis ruffled bowl
- 369 Nwood 8.5" purple 3 Fruits ruffled bowl
- 370 Nwood 8.5" mari 3 Fruits ruffled bowl w/ BW back
- 371 Nwood 8.5" green 3 Fruits ruffled bowl w/ BW back
- 372 Nwood 8.5" bright mari Stippled 3 Fruits ruffled bowl
- 373 Nwood 8.5" elec purple 3 Fruits spatula ft'd ruffled bowl
- 374 Nwood 8.5" AO 3 Fruits stippled spatula ft'd bowl
- 375 Nwood 8.5" elec purple 3 Fruits spatula ft'd bowl
- 376 Nwood 9" BRIGHT GREEN Strawberry plate w/ BW back One of the better ones!
- 377 NWOOD 9" BRIGHT YELLOW MARI STRAWBERRY PLATE W/PB. WOW!
- 378 NWOOD 9" BRIGHT YELLOW MARI STRAWBERRY BOWL W/PB. WOW! MATCHING PLATE AND BOWL.
- 379 Nwood 8.5" purple Strawberry ruffled bowl.
- 380 Nwood 8.5" lime green Strawberry Stippled ruffled bowl. Scarce
- 381 Nwood 9" green Wild Strawberry ruffled bowl w/ BW back.
- 382 nwood 9" purple Wild Strawberry ruffled bowl w/ BW back
- 383 Fenton 9" GREEN Holly plate. Very scarce
- 384 Nwood 9" bright mari Holly plate
- 385 Nwood 9" mari Holly plate
- 386 Fenton 9" marigold Holly 3-1 edge bowl

- 387 Fenton 8.5" green Holly ruffled bowl
- 388 Fenton 8" blue Holly ICS bowl
- 389 Fenton 8.5" GREEN Peacock at Urn 6 ruffled bowl. GREAT COLOR!
- 390 Fenton 8.5" blue Peacock at Urn ruffled bowl
- 391 Fenton 9" blue Peacock at Urn 8 ruffled bowl
- 392 Fenton 9" frosty white Orange Tree plate. SUPER!
- 393 Fenton 9" GREEN LOTUS & GRAPE PLATE
- 394 Fenton 8" blue Dragon & Lotus ICS bowl.
- 395 Fenton 8" green Dragon & Lotus ft'd bowl- Scarce
- 396 Fenton 8" PO Peacock & Grape spatula ft'd bowl Scarce!
- 397 Fenton 8" purple Peacock & Grape ft'd bowl
- 398 Nwood 8.5" green Peacock and Grape bowl
- 399 Fenton 8" mari Lions plate. Scarce
- 400 Fenton 6.5" blue Lions deep round bowl
- 401 Fenton mari Butterfly & Berry hatpin holder. RARE!
- 402 Imp 9" elec purple Pansy ruffled bowl- HOT!
- 403 Imp 9" purple Pansy ruffled bowl
- 404 Imp 8" elec purple Ripple Vase. Pretty
- 405 Imp 10" mari Freefold vase- great shape
- 406 mp 9" elec purple Pansy ruffled bowl. WOW!
- 407 imp 9" purple Scroll Embossed plate.
- 408 Imp 8" elec purple Beaded Bullseye vase, flared
- 409 Imp mari Zipper Loop oil lamp. Short base
- 410 Imp 7" elec purple Heavy Grape plate
- 411 Imp mari Scroll Embossed compote
- 412 Imp mari Windmill milk pitcher
- 413 Imp mari Zipper Loop lamp.
- 414 Imp 6" green Grape plate
- 415 Imp 8" amber Lustre Rose deep round bowl.
- 416 Imp 4.5" elec purple Morning Glory flared vase
- 417 Imp mari Poinsettia milk pitcher
- 418 Imp 11" elec purple Ripple mid size vase
- 419 Imp elec purple 7" elec purple Heavy Grape bowl. BRIGHT!!
- 420 Imp 4" mari Smooth Panels flared vase
- 421 Imp 5" mari Ripple vase- Scarce size
- 422 Imp mari File & Cane water pitcher
- 423 Imp smoke Premium candlesticks
- 424 Fenton blue Persian MEDallion CRE compote
- 425 Fenton mari Persian Medallion CRE compote
- 426 Nwood AO Heart 7 Flower compote Loaded w/ opal!
- 427 Nwood Pastel AO Heart & Flower compote BRIGHT IRID!!
- 428 Nwood pastel mari Harvest Poppy compote
- 429 Fenton green Peacock at Urn compote
- 430 Nwood purple Daisy & Plume compote
- 431 Fenton powder blue Peacock at Urn compote. Scarce
- 432 Fenton black amy Holly compote
- 433 Dugan white Constellation compote
- 434 Dugan white Constellation compote
- 435 Fenton mari Iris ruffled compote.
- 436 Fenton powder blue Holly Goblet- Scarce
- 437 Nwood green DAisy & Plume compote
- 438 Nwood IG PEACOCK AT FOUNTAIN RUFFLED COMPOTE WONDERFUL COLOR!
- 439 Nwood purple Raspberry compote- Pretty nice for this compote
- 440 Fenton purple Blackberry ruffled compote
- 441 Fenton mari Birds & Cherries ruffled compote
- 442 Nwood mari Heart & Flower compote
- 443 Nwood Frosty White Heart & Flower compote- lots of color!
- 444 2 Smooth Rays compotes w/ ruffled tops Mari- Green
- 445 Blue & Mari Holly Compotes
- 446 Nwood purple Daisy & Plume ruffled compote
- 447 Imp/ elec purple Smooth Rays ruffled compote SUPER!
- 448 2 Mari Daisy & Plume carnival glass compotes
- 449 Nwood bright mari G&C hatpin Holder
- 450 Nwood purple G&C hatpin Holder
- 451 Nwood purple G&C hatpin Holder
- 452 Nwood purple G&C hatpin Holder
- 453 Nwood GREEN G&C hatpin Holder
- 454 Nwood purple G&C hatpin Holder
- 455 6 carnival glass hatpins. blue Dragon Fly; Morley Beetle; Big Butterfly; Beehive; and 2 others
- 456 Nwood elec purple Ivy Town pump. this is a really pretty one!! As good as we have sold
- 457 Imp green novelty Corn Bottle
- 458 Imp mari Thumbprint & Oval ruffled vase. As dark as you will find
- 459 DUGAN ELEC PURPLE DAISY WEB JIP HAT W/ CRE. SWEET!!
- 460 Imp 5.5" elec purple Morning Glory vase
- 461 Imp 5.5" mari Morning Glory vase
- 462 Nwood mari G&C Wiskey bottle w/ stopper. Very Scarce in Marigold
- 463 2 West. purple Corinth vases- well matched
- 464 2 West amber Corinth JIP vases- another great match
- 465 2 Nwood 6.5" purple Tree Trunk squatty vases
- 466 Nwood 7" green Tree trunk vase
- 467 Nwood 8" purple Jester Thin Rib vase- scarce
- 468 Nwood 6" green Leaf Columns squatty vase. RARE
- 469 Nwood 6" purple Leaf Columns squatty vase. RARE Beautiful elec color
- 470 Nwood 6.5" purple Leaf Columns squatty vase. RARE Beautiful elec color
- 471 Dugan 5" white Target vase. Frosty and very scarce
- 472 Nwood mari Drapery vase 7.5"
- 473 nwood green tree Trunk midsize vase 14" Scarce
- 474 Nwood 14" elec purple Tree Trunk mid size vase VERY NICE!



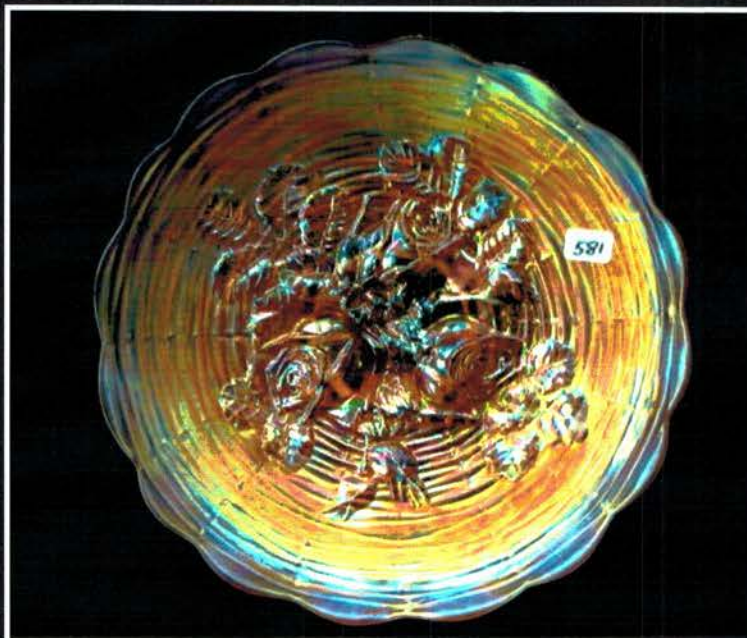
- 475 Nwood 14" mari Tree Trunk mid size vase
- 476 Nwood 15" mari Tree Trunk mid size vase
- 477 Nwood 15" purple Thin Rib mid size vase
- 478 Nwood mari G&C Whiskey decanter w/ stopper
- 479 Nwood bright mari Peacock at Fountain water pitcher.
- 480 Nwood dark mari Raspberry milk pitcher
- 481 Nwood 8.5" mari Good Luck ruffled bowl
- 482 Nwood mari Peacock at Fountain fruit bowl A looker!
- 483 Nwood BLUE G&C LARGE Fruit bowl Scarce size
- 484 Fenton mari G&C low fruit bowl w/ PM int.
- 485 Fenton mari Chrysanthemum ft fruit bowl- BRIGHT
- 486 Fenton mari Stag & Holly fruit bowl
- 487 Fenton mari Orange Tree Fruti bowl
- 488 Dugan mari Grape Arbor fruit bowl
- 489 MAri Premium Candlesticks w/ Wide Panel cupped bowl.
- 490 Mari Wide Panel charger and bowl
- 491 SUPER DUGAN 9" GARDEN PATH VARI RUFFLED BOWL W/ SODA GOLD EXT. VERY SHARP BOWL
- 492 Dugan 9" PO Garden Path vari ruffled bowl w/ Soda gold ext/ Opal 3/4 way down bowl!
- 493 Dugan purple Wreath Cherry banana boat
- 494 Dugan purple Wreath Cherry banana boat
- 495 Dugan mari Peaches and Pears banana boat
- 496 Nwood blue G&C banana boat- Scarce
- 497 NWOOD 10" BRIGHT YELLOW MARI G&C RUFFLED BOWL- WOW!!!
- 498 NWOOD BLUE G&C ICS BOWL- SUPER!
- 499 Nwood 10" purple Peacock at Urn ICS bowl
- 500 Nwood 10" white Peacock at Urn ICS bowl
- 501 NWOOD ELEC BLUE PEACOCK AT URN ICS BOWL AND 6 SAUCES- GREAT SET.. MASTER BOWL IS UNREAL!
- 502 Dugan 10" frosty white Persian Garden ICS bowl
- 503 3 Fenton mari 5" squatty vases- 2 bogey Bayou and Diamond and rib
- 504 2 Imp 8" clambroth Morning Glory vases
- 505 5 Dugan Twigs vases approx 9" each. Mari Purple Lavender
- 506 2 Imp mari Ripple Mid Size 15.5" vases
- 507 Dugan 11" SAPPHIRE Pulled Loops vase- RARE!
- 508 Dugan 11" blue Pulled Loops vase
- 509 Dugan 9" elec purple Lined Lattice vase
- 510 Dugan 10.5" white Lined Lattice vase
- 511 Dugan 11" pastel mari Big Basketweave vase
- 512 Dugan 11" PO Target vase
- 513 Imperial GREEN Morning Glory 17" funeral vase
- 514 Imperial elec purple Morning Glory Elec purple 19" funeral vase! HUGE!!
- 515 Imp 12" pastel mari Morning Glory squatty funeral vase w/ snowflake base
- 516 Imp 19" mari Morning Glory funeral vase w/ snowflake base
- 517 Nwood 17" green Wide Panel funeral vase
- 518 Fenton 18" BLUE RUSTIC funeral vase- Great color!!!!
- 519 Fenton 21" mari rustic Funeral vase MASSIVE 21" vase!
- 520 Imp 17" SMOKE Ripple funeral vase- RARE
- 521 Fenton 16" purple Rustic mid-size vase
- 522 Nwood 11" IB Diamond Point vase- Scarce
- 523 Nwood 9" mari Diamod Point vase
- 524 Nwood 11" purple Diamond Point vase
- 525 nwood 10.5" purple Thin Rib vase
- 526 Nwood 11" green 4 Pillars vase.
- 527 Nwood 10" blue 4 Pillars vase. Nice color!
- 528 Nwood 10" mari Tree Trunk vase
- 529 Nwood 8.5" purple Tree Trunk vase. GRaT COLOR!
- 530 Nwood 10" purple Fine Rib vase
- 531 Nwood 9" purple Diamond Point vase
- 532 Nwood 14" green Wide Panel mid size vase
- 533 Nwood 17" green Wide Panel mid size vase
- 534 Fenton 12.5" mari Rustic mid size vase
- 535 Fenton 15" Rustic midsize vase
- 536 Fenton 17" Rustic midsize vase
- 537 Fenton 15" blue Rustic midsize vase
- 538 Fenton 17" mari Fine Rib vase
- 539 Fenton 15" mari & blue Diamond Spearhead vases
- 540 Duagn 6.5" PO pinched rib vase w flared top
- 541 West 9" mari Concave Flute vase
- 542 Fenton green 10" Diamond & Rib vase
- 543 Dugan 8" PO Pulled Loops vase
- 544 Fenton 11" mari Rustic vase
- 545 Nwood green 9.5" Tree Trunk vase
- 546 Fenton DARK MARI Floral & Grape water pitcher
- 547 Fenton WHITE ORANGE TREE ORCHARD WATER PITCHER SCARCE & PRETTY
- 548 RARE IMP ELEC PURPLE OCTAGON LG WATER PITCHER GREAT COLOR
- 549 Fenton mari 10 Mums tankard pitcher, Scarce
- 550 Nwood painted cannonball water pitcher and 1 tumbler
- 551 Nwood purple Raspberry Water pitcher and 1 tumbler
- 552 Dugan 10" pastel mari Petal & Fan bowl
- 553 Dugan 7" PO Rain Drops dome ft'd bowl
- 554 Pansy brass bowl
- 555 Fenton Autumn Acorn blue 7.5" CRE bowl
- 556 Fenton 11" mari Stag & Holly ICS ft'd bowl
- 557 Fenton 10.5" mari Stag & Holly ICS ft'd bowl
- 558 Fenton 11" mari Chrysanthemum ft'd bowl
- 559 Fenton BLUE 2 Flowers ft'd bowl 10"
- 560 FENTON 6" RED OE BLACKBERRY SQUARE HAT!
- 561 FENTON 6" RED OE

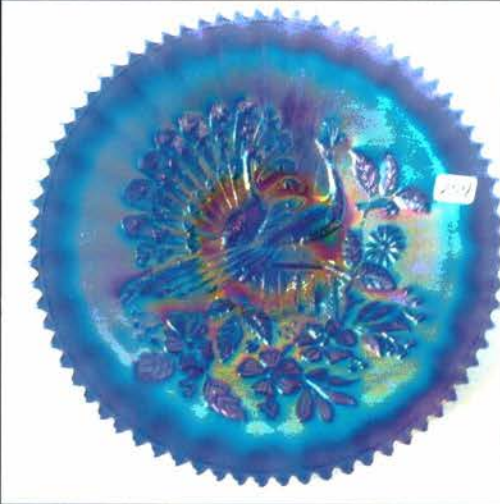
- 562 Fenton 5" blue Blackberry Spray ruffled hat
- 563 Fenton 5" OE blue hat
- 564 Fenton mari 5" OE 2 side hat, Miller furniture
- 565 Fenton 5" white OE hat
- 566 Fenton 5" aqua OE 2 side hat
- 567 Fenton 6" vaseline JIP OE hat
- 568 Fenton 6" mari JIP OE hat
- 569 Fenton 6" OE Blackberry hat
- 570 Fenton mari Horse Medallion rosebowl- nice yellow irid
- 571 Fenton mari Horse Medallion JIP ft'd bowl
- 572 Nwood 7" green Strawberry handgrip plate.
- 573 Nwood 7" mari G&C handgrip plate,
- 574 Nwood 7" purple G&C handgrip plate
- 575 Nwood 7" purple G&C handgrip plate
- 576 Nwood 6" G&C purple handgrip plate
- 577 Nwood 6" elec blue Peacock at Urn ICS bowl. NICE!
- 578 3 Nwood purple 6" Peacock at Urn ICS bowls
- 579 2 Nwood 6" IG Peacock at Urn ICS bowls, both nice
- 580 Nwood 8" Sunflower ft'd bowl. Pretty!
- 581 NWOOD 9" MARI ROSE SHOW PLATE W YELLOW IRID A KEEPER!
- 582 Nwood 8" mari Poppy Show ruffled bowl. Beautiful!!
- 583 DUGAN 8" LAVENDER APPLE BLOSSOM TWIGS ICS BOWL. SWEET LOOKING BOWL!
- 584 Dugan 8" elec purple Flower & Frames dome ft'd tri corner CRE bowl.. WOW HAS EVERYTHING GOING FOR IT!
- 585 Dugan 8" elec purple Flower & Frames dome ft'd bowl
- 586 Dugan 7" elec purple Holly Berry ruffled bowl
- 587 Dugan BLUE Puzzle stemmed compote
- 588 Dugan 9" purple Double Stem Rose dome ft'd bowl
- 589 Dugan 9" PO Soutache CRE dome ft'd plate
- 590 Nwood G&C Mid Size punch base- purple
- 591 Nwood BLUE G&C punch base- midsize
- 592 Imp mari fashion punch base
- 593 BEAUTIFUL Fenton purple Wreath of Roses 8pc punch set. One of the better purple ones we have sold
- 594 Fenton Blue Wreath of Roses punch bowl w/ purple base.
- 595 Nwood purple G&C MIDSIZE 8pc punch set. Great color!
- 596 Fenton GREEN Wreath of Roses punch 8pc. Vintage interior
- 597 Dugan ELEC PURPLE Many Fruits punch bowl. WOW! Where's the base for this beauty?
- 598 Dugan mari Many Fruits 10 pc punch set.
- 599 Dugan mari Many Fruits 10pc punch set.
- 600 Nwood elec purple G&C 8pc punch set/ Well matched
- 601 Nwood mari Acorn Burr 8pc punch set.. great color for this set
- 602 Nwood purple Peacock at Fountain 8pc punch set Scarce
- 603 NWOOD ELEC PURPLE G&C MASTER PUNCH SET. WOW! WHAT A BEAUTY! GREAT SET!
- 604 Nwood purple Acorn Burr 8pc punch set. TOP IS SUPERB!
- 605 Imp mari Flute ruffled punch bowl base
- 606 Imp Elec purple Diamond Lace 7pc water set.. this is as well matched as you will ever find
- 607 FENTON 7" RED ACORN DEEP ROUND BOWL THIS IS RED AS IT SHOULD BE!
- 608 Fenton blue Vintage card tray
- 609 Fenton 8" mari Stag & Holly ruffled bowl
- 610 Fenton 6" mari Acorn deep bowl
- 611 Fenton 5" mari Pinecone ruffled bowl
- 612 Fenton AQUA Blackberry Spray JIP hat w./ CRE
- 613 Fenton blue Wreath Roses stem compote
- 614 Fenton 8" green Vintage CRE bowl
- 615 FENTON 7" RED LEAF CHAIN RUFFLED BOWL. RARE BOWL
- 616 Fenton mari Lotus & Grape card tray
- 617 Fenton mari 8" Thistle ICS bowl
- 618 Fenton 7" Green Vintage ruffled bowl
- 619 Fenton 8" purple G&C ball ft'd bowl.
- 620 Fenton 9" blue Vintage ICS bowl. This a good lookin bowl!!
- 621 Fenton 7" Green Vintage plate. Missing irid or something
- 622 Fenton 6" blue Holly 2 side up hat- Pretty
- 623 Fenton mari Panther 5" ft'd bowl
- 624 Fenton mari Panther 5" ft'd bowl
- 625 Fenton blue Watelily ft'd 5" bowl
- 626 Fenton mari Mikado compote
- 627 Fenton 8" mari Captive Rose 3-1 edge bowl- Dark
- 628 Marigold Floral and Grape water set.
- 629 Dugan PO Question MARKS compote
- 630 Dugan PO Single Flower JIP CRE bowl
- 631 Dugan PO 9 Ski Star tri-corner dome ft'd bowl
- 632 Dugan PO 8" Cherries 3-1 edge ft'd bowl. This is one NEAT bowl! take a look!
- 633 Dugan PO Starfish compote
- 634 Dugan PO 7" Rain Drops 10 ruffled crimped bowl
- 635 Dugan PO 8" Single Flower 3-1 edge bowl
- 636 Dugan PO 8" Cherries 10 ruffled bowl
- 637 Dugan white Leaf Rays Nappy.
- 638 Dugan PO Holly Berry gravy boat
- 639 Dugan purple Holly Berry Gravy boat
- 640 Dugan Amberish Question MARKS ft'd plate VERY NICE! Odd color
- 641 Dugan purple Leaf Rays nappy
- 642 Dugan purple 10 ruffled Leaf Rays low nappy
- 643 Dugan 7" purple Grapevine Lattice plate
- 644 Dugan 7.5" purple Carolina Dogwood 10ruffled deep bowl.
- 645 Art Glass green Spittoon.
- 646 Dugan mari Big Basketweave basket
- 647 Dugan purple Wreath Cherry 7pc water set, Scarce
- 648 Dugan mari Wreath Cherry 7pc water set. Great color for this set

- 649 Nwood purple G&C lg covered Compote
- 650 Nwood purple G&C lg covered Compote
- 651 Nwood purple G&C lg ruffled Compote Scarce
- 652 Nwood purple Butterfly bon bon- elec hilights
- 653 Nwood elec blue G&C bon bon
- 654 Nwood green G&C bon bon- scarce
- 655 Nwood 9" white Heart & Flower ruffled bowl
- 656 Nwood elec blue Poppy pickle dish-
- 657 Nwood green Leaf & Beads flared candy dish
- 658 Nwood 8" mari Sunflower ft'd bowl.
- 659 Nwood mari 8 Sided Bushel Basket
- 660 Nwood white Fine Cut & Roses ruffled candy dish
- 661 Nwood mari Fruits and Flowers compote
- 662 Nwood 8" purple Sunflower ft'd bowl.
- 663 Nwood 8" mari G&C card tray. Scarce
- 664 Nwood 9" GREEN G&C plate w/ BW back
- 665 Nwood 9" purple G&C plate w/ plain back
- 666 Nwood purple Raspberry 7pc water set. Pitcher is WONDERFUL!
- 667 Nwood blue G&C bon bon, bright color
- 668 Nwood green G&C bon bon.
- 669 Nwood purple Fine Cut & Roses candy dish, as pretty as you will find,
- 670 Nwood purple Acorn Burr 7pc berry set. Scarce
- 671 Nwood 9" green G&C plate w/ BW back
- 672 Nwood mari Acorn Burr 7pc water set.
- 673 Nwood GREEN 7pc Stippled Ray ruffled berry set
- 674 Nwood mari Grape Leaves 3-1 edge bowl
- 675 2 Acorn Burr bolo's. Well done pieces of jewelry
- 676 Nwood purple G&C 7pc water set
- 677 Nwood mari G&C ruffled hat
- 678 Fenton 8" purple Autumn Acorn ruffled bowl
- 679 Fenton 6" RED Acorn round bowl- Sweet
- 680 Fenton 6" blue Acorn round bowl
- 681 RARE Dugan 9" purple 4 Flowers deep round bowl w/ Soda Gold ext
- 682 Here's one of those odd purple Stippled Rays ruffle bowl w/ swirl base. Still no info on this as far as I know, I have only seen a couple of these
- 683 MARIGOLD ON MOONSTONE ROSES AND RUFFLES GWTW LAMP. RARE LAMP AND EXTREMELY COLORFUL!
- 684 NORTHWOOD MARIGOLD WIDE PANEL 4 LILY EPERGNE- VERY HARD TO FIND!
- 685 NORTHWOOD GREEN WIDE PANEL 4 LILY EPERGNE. BASE IS WONDERFUL! I see NO issues on either one.
- 686 Nwood purple Daisy & Plume rosebowl w/ rasp int
- 687 Nwood green Daisy & Plume rosebowl
- 688 Nwood mari Daisy & Plume rosebowl
- 689 Nwood green Daisy & Plume rosebowl
- 690 3 Imperial rosebowl, mari Star Medallion, 2 frosted block
- 691 RARE COSMOS AND CANE STEM ROSEBOWL IN MARIGOLD CARNIVAL. UNUSUAL SHAPE FOR THIS
- 692 Nwood blue Bushel Basket- Good Color
- 693 Nwood mari Fine Cut & Roses rosebowl.
- 694 Nwood elec purple Fine Cut & Roses rosebowl.
- 695 Nwood green Fine Cut & Roses rosebowl.
- 696 Nwood purple Fine Cut & Roses rosebowl.
- 697 Nwood purple Beaded Cable rosebowl.
- 698 Nwood green Beaded Cable rosebowl.
- 699 Nwood elec blue Beaded Cable rosebowl.
- 700 Nwood dark mari Beaded Cable rosebowl.
- 701 Nwood purple Beaded Cable rosebowl.
- 702 Nwood lt amy / lav. Beaded Cable rosebowl.
- 703 Nwood ELEC BLUE Leaf & Beads rosebowl WOW!
- 704 Nwood dark mari Leaf & Beads rosebowl sunflower int
- 705 Nwood dark mari Leaf & Beads rosebowl sunflower int
- 706 Nwood purple Leaf & Beads rosebowl w sunflower int
- 707 Nwood AO Drapery Rosebowl, Lots opal!
- 708 Nwood purple Wild Rose points up candy dish
- 709 Nwood purple Wild Rose points out candy dish
- 710 Nwood green Leaf & Beads rosebowl.
- 711 Nwood blue Leaf & Beads rosebowl
- 712 Fenton green Vintage rosebowl- Silvery
- 713 Marigold carnival glass Pineapple rosebowl
- 714 Fenton Garland mari rosebowl
- 715 Mari 7" paneled trumpet candlesticks
- 716 Marigold Portly Candlesticks
- 717 Nwood Mari G&C Candlesticks
- 718 Imperial Mari Delta Base candlesticks
- 719 Pair marigold candlesticks w/ paneled drape bases
- 720 Pair mari Crackle car vases
- 721 Imperial SMOKE Chesterfield candlesticks
- 722 Imperial pastel mari Chesterfield candlesticks
- 723 Imperial smoke Chesterfield candlestick
- 724 Nwood 8" elec/ green Colonial candlesticks
- 725 Nwood 8" green Colonial candlesticks
- 726 3 imp Grape 6" mari plates
- 727 2 Fenton 6" mari plates- Persian Med. Stippled rays
- 728 Dugan white and PO Lattice & Points squatty vases
- 729 Tray lot misc carnival glass- 2 creamers- Orange tree powder base- Lily
- 730 tray lot 5 pcs Carnival Glass- See photo
- 731 Cambridge green Inverted Feather cracker jar
- 732 Cambridge green Inverted Feather cracker jar
- 733 Imperial mari Octagon complete table set
- 734 Nwood mari 6 paneled sherberts and 1 mari paneled salt

- 735 Tray lot 4 pcs mari- Insulator- bank- waterlily TP & Tri corner bowl
- 736 Imp SMOKE Grape 7pc wine set- For smoke, this has GREAT COLOR!
- 737 Imp Grape Elec purple wine set- no stopper but SUPER!
- 738 Imp Grape Elec purple wine set- no stopper but ANOTHER SUPER SET!
- 739 Imp Grape Green decanter - no stopper
- 740 Imperial Grape mari 8pc wine set- have 3, all w very nice color!
- 741 Imperial Grape mari wine decanter very nice color!
- 742 Imperial Grape mari 8pc wine set- have 3, all w very nice color!
- 743 Imperial Grape mari 8pc wine set- have 3, all w very nice color!
- 744 Dugan mari Harvest Flower 7pc wine set
- 745 Imp 18" elec purple Morning Glory funeral vase
- 746 Imp 18" mari Morning Glory funeral vase
- 747 Imp 18" mari Morning Glory funeral vase
- 748 Imp 20" mari Morning Glory funeral vase
- 749 Imp 13" purple Ripple vase
- 750 2 Imperial Green Ripple vases 13"
- 751 Imp 12" elec purple Ripple Vase
- 752 IMPERIAL 10" GREEN SQUATTY MID SIZE VASE RARE VASE
- 753 2 imp mari 11" Beaded Bullseye vases
- 754 3 Imp mari 8" Ripple vases
- 755 2 Imp mari Ripple vases- tallest 10"
- 756 Fenton 11" GREEN Fine Rib vase
- 757 Fenton 12" lite gree Boggy Bayou vase
- 758 Fenton blue and purple April Showers vases
- 759 2 Fenton blue 12" wide panel vases
- 760 Nwood 6.5" purple Thin Rib vase
- 761 Fenton 7" purple Long Thumbprint vase
- 762 Nwood green opal Diamond Points vase and mari Tree Trunk vase 11" each
- 763 Fenton green and blue Diamond Rib vases
- 764 Nwood 15" green Wide Panel vase
- 765 Imp 15" mari Ripple mid size vase
- 766 Canada Dry Sparkling Orange pop bottle
- 767 Fenton 7" mari Feathers vase
- 768 West 8" purple Corinth vase
- 769 Fenton 16" purple Fine Rib vase
- 770 Imp purple Octagon midsize pitcher Has a cool deep rich irid
- 771 3 purple Octagon tumblers
- 772 2 mari Imperial Shades- Leaf Garden
- 773 west 8" MMG Daisy Wreath ruffled bowl (marigold milk glass)
- 774 Imp 9 & 5" purple Octagon ruffled bowls
- 775 Fenton green smooth Rays bowl mounted on a silver plate base. NICE!
- 776 Nwood green & mari Singing birds mugs
- 777 2 Dugan purple Fishermans mugs
- 778 Fenton blue Orange Tree shaving mug
- 779 Nwood purple Acorn burr 7pc water set, well matchd
- 780 Dugan purple Peacock at Fountain 5pc water set
- 781 SUPER GREEN SINGING BIRDS 7PC WATER SET. GREAT COLOR!! Pitcher is WONDERFUL!
- 782 Imp mari Octagon 5pc water set
- 783 3 Imperial carnival glass Flute TP's 2 mari- 1 green
- 784 Tray lot mari carnival glass- see photo
- 785 Tray lot of 6pc carnival glass as shown
- 786 7 pcs marigold carnival glass as shown
- 787 4 pc marigold carnival glass- as shown
- 788 4 Wreath Roses purple punch cups- vintage int.
- 789 2 elec purple Peacock at Fountain punch cups
- 790 9 purple G&C punch cups
- 791 7 mari Punch cups- Acorn burr
- 792 8 purple Acorn Burr punch cups
- 793 6 blue G&C stippled punch cups
- 794 6 blue G&C stippled punch cups
- 795 10 mari 474 Punch cups
- 796 G&C green punch cup
- 797 2 mari and 2 purple many fruits punch cups
- 798 3 imp green Grape punch cups
- 799 3 Fenton blue Floral & Grape tumblers
- 800 4 purple Acorn Burr tumblers
- 801 5 green Raspberry tumblers
- 802 Imp Grape smoke tumbler
- 803 MAri waterlily tumbler ( Fenton)
- 804 purple Oriental Poppy & G&C tumblers
- 805 Mari & purple Wreath Cherry tumblers
- 806 3 green Singing Bird tumblers
- 807 purple & mari Raspberry tumblers
- 808 Camb green Buzz Star tumbler
- 809 Purple Greek Key tumbler
- 809a Nwood Singing Birds sugar -no lid and G&C sugar top- Both purple
- 810 Imp Soda Gold smoke 3 pc console set
- 811 Imp Soda Gold marigold 3 pc console set
- 812 frank Fenton 85th Holly Plate red
- 813 Contemporary Carnival Glass plates as shown
- 814 Contemporary Carnival Glass toothpicks as shown
- 815 Contemporary Carnival Glass Nugget creamer
- 816 Contemporary Carnival Glass 3 toothpicks
- 817 beaded necklace
- 818 Contemporary Carnival Glass as shown
- 819 Contemporary Carnival Glass 2 plates as shown
- 820 Contemporary Carnival Glass 2 HOACGA Candle lamps

- 821 Contemporary Carnival Glass mari powder box
- 822 Contemporary Carnival Glass bells
- 823 Contemporary Carnival Glass toothpicks as shown
- 824 Contemporary Carnival Glass swung vase
- 825 Contemporary Carnival Glass set of plates as shown

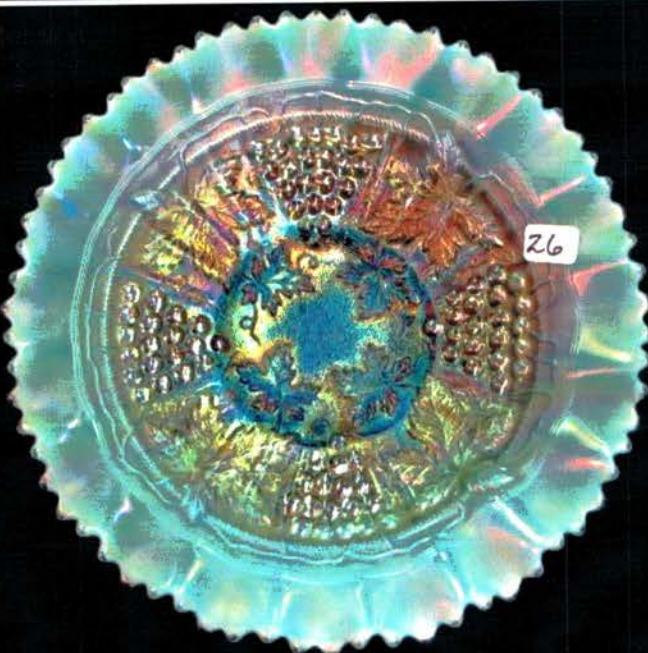




Only Known Sapphire  
Oriental Poppy Tankard!



Blue Midsize



## Carnival Glass Auction

Nov 4th and 5th 2016

Greenville Auction Center-

Greenville Ohio

This auction is available on Auction  
Flex for ABSENTEE bidding.

Jim Wroda Auctions  
58 East Main St  
Westfield NY 14787  
937 459 9556  
email: jimwroda@mac.com  
Website: www.jimwrodauction.com

PRESORTED  
FIRST CLASS MAIL  
U.S. POSTAGE  
**PAID**  
CELINA, OH  
PERMIT NO. 99

FIRST CLASS POSTAGE PAID

