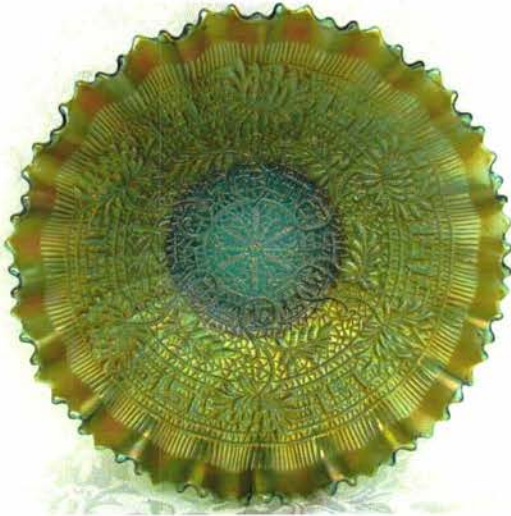


# BURNS

## AUCTION SERVICE

**2016 GREAT LAKES  
CARNIVAL GLASS  
CONVENTION AUCTION  
SATURDAY, OCTOBER 29th  
10:00 A.M.**



Lot#215



Lot#165

**Preview:**

**Friday evening, October 28th after banquet  
Saturday, October 29th at 8:00 a.m.**

at the

**RAMADA HOTEL & CONFERENCE CENTER  
7501 W. SAGINAW HWY., LANSING, MI 48917  
(Exit 93B from I 96/I 69)**

**CALL (517) 627-3211 FOR RESERVATIONS**



Lot#110



Lot#187



Lot#120



We are pleased, once again, to be able to supply the glass for the 2016 Great Lakes Carnival Glass Convention. This year's auction contains over 300 lots from a New England collection. There are a number of items that are of great significance and we hope ya'll appreciate the opportunity to bid on them.

This auction will be on Auction Flex, as well as, Auction Zip ID#29661. All auction flex bids are due by 11:59 p.m., Friday, October 28th. All terms and conditions as previous auctions. All mail bidders will be notified ASAP.

All photos and listings can be viewed at [www.tomburnsauctions.hibid.com](http://www.tomburnsauctions.hibid.com).

For convention information, please call Maxine Burkhardt at 517-592-6552.

To leave mail or phone bids, call Tom Burns at 407-592-6552.

This is a Michigan State Home football weekend so the hotel **MAY BE SOLD OUT**. If available, the rooms will cost the current hotel rate. Call the hotel (517) 627-3211 for further information.

- |        |   |        |  |
|--------|---|--------|--|
| ___1.  | N'wood Argonaut Shell domed 6 Ruffled Candy Dish – Vaseline Opal. (non-iridized; great opal)  | ___16. | N'wood Stretch Tree of Life Base J.I.P. Bowl – White (scarce; nice)  |
| ___2.  | Hobb's Hobnail Spooner – Clear Opal. (non-iridized)   | ___17. | 7 ¾" N Wishbone 3 ftd. Deep 8 Ruffled Bowl w/ Ruffles and Rings Ext. – Green (odd tint)                                      |
| ___3.  | L.G. Wright (?) Twigs Tri-Cornered Crimped Edge Vase – Milk Glass   | ___18. | N G&C Master Berry Bowl – Purple   |
| ___4.  | Depression Era Poodle Covered Powder Jar – Marigold   | ___19. | N G&C small-size 3 ftd. Ruffled Fruit Bowl – Purple (nice color & irid.)   |
| ___5.  | 7 ¾" Tall x 7 5/8" Diam. Signed Imperial Iron Cross Chesterfield Lg. Round Stemmed Compote – White (scarce; especially with Iron Cross) | ___20. | <b>N G&amp;C LARGE SIZE 3 FTD. RUFFLED FRUIT BOWL – MARI. (VERY SCARCE W/ NICE IRID.)</b>                                    |
| ___6.  | 10 ½" Signed Imperial Iron Cross Stretch Paneled Plate – Lt. Smoke (very scarce; odd tint; nice signature)                              | ___21. | <b>FENTON G&amp;C SMALL SIZE 3 FTD. RUFFLED FRUIT BOWL W/ PERSIAN MED. INT. – AMETHYST (VERY DESIRABLE; VERY ATTRACTIVE)</b> |
| ___7.  | (2) 8 ¾" Fenton (?) Stretch Flared Plates – (1) Florentine Green (1) Celeste Blue (selling as a pair)                                   | ___22. | Fenton Vintage Grape 3 ftd. Fern Dish – Blue   |
| ___8.  | 10 ½" Imperial Stretch Center Handled Cookie Tray w/ "Balloons" Etching – Smoke (scarce; attractive)                                    | ___23. | 9" Fenton Hearts and Vine 6 Ruffled Bowl – Blue  |
| ___9.  | 12 ½" Tall x 8 ¼" Diam. x 4 7/8" Base Imperial Morning Glory Swung Funeral Vase – Crystal (tough to find)                               | ___24. | 8 5/8" Fenton Peacock and Grape Bowl with 3 in 1 Edge – Green (nice example w/ great color)                                  |
| ___10. | <b>13 ½" FENTON STRETCH "PUNCH BOWL" WHIMSEY LARGE ICE CREAM SHAPED BOWL – RED (ABSOLUTELY SUPER RED ITEM; GREAT SIZE)</b>              | ___25. | <b>FENTON TWO FLOWERS SPATULA FTD. ROSE BOWL – BLUE (SCARCE W/ NICE COLOR)</b>   |
| ___11. | Pair 10 ½" Tall Fenton Florentine Lg. Candlesticks – Grecian Gold (scarce; nice color)  | ___26. | Fenton Sailboats Stemmed 6 Ruffled Crimped Edge Compote – Mari.  |
| ___12. | 8 ½" Tall Imperial Double Scroll Single Candlestick – Marigold  | ___27. | Fenton Smooth Rib Stemmed 6 Ruffled Compote – Lime Green/ Mari.  |
| ___13. | Pair U.S. Glass Candlesticks/Bud Vases – Celeste Blue (Harding Blue?)   | ___28. | Westmoreland Leaf Swirl Stemmed 6 Ruffled Compote – Amethyst (scarce)  |
| ___14. | 7 ½" Stretch Cupped In Bowl on Black Base – Celeste Blue  | ___29. | 6 ¼" Imperial Star and File Sherbet Underplate – Mari. (great color)   |
| ___15. | Diamond (?) Stretch Mae West 3 pc. Console Set – Celeste Blue (nice set, especially the sticks)   | ___30. | 9 ¼" Tall x 3 3/8" Base Imperial Ripple Swung Vase – Purple (nice irid.)   |
|        |   | ___31. | 13 ½" Tall x 3 3/8" Base Imperial Ripple Tall Swung Vase – Purple (super irid.)  |
|        |   | ___32. | Dugan Leaf Rays Handled Nappy – White (frosty and nice)  |
|        |   | ___33. | 10 3/8" Dugan Garden Path Variant Lg. 6 Ruffled Bowl w/ Soda Gold Ext. – Lt. P. Opal (scarce)                                |
|        |   | ___34. | Signed J. Mattison Studio Artist Bowl – Amethyst (new studio item)   |



- \_\_\_ 35. **FENTON HOLLY 2 SIDED HAT – ELEC. RED (ABSOLUTELY SUPER, SUPER EXAMPLE – WOW!)**
- \_\_\_ 36. Fenton Flowers 3 ftd. Flat Topped Rose Bowl – Blue (very rare variation to top; chip on one foot)
- \_\_\_ 37. 9" Fenton Peacock at the Urn 8 Ruffled Bowl – Dk. Mari. (nice color & irid.)
- \_\_\_ 38. New Fenton Drapery 3 ftd. 6 Ruffled Crimped Edge Bowl – Aqua Opal.
- \_\_\_ 39. 5 7/8" Dugan Garden Path Variant 6 Ruffled ind. Berry Bowl – Lt. P. Opal (has soda gold ext.)
- \_\_\_ 40. 8 1/2" Dugan Paneled Cherries 3 ftd. T.C.E. Flared Bowl – P. Opal (very attractive; great color & opal.)
- \_\_\_ 41. 8" Dugan Ski Star domed Tri-Cornered Crimped Edge Bowl – P. Opal. (nice opal.)
- \_\_\_ 42. 9 3/8" Dugan Single Flower Ext. 10 Ruffled Bowl – Dk. P. Opal. (super opal.)
- \_\_\_ 43. 9 5/8" Dugan Fanciful 10 Ruffled Low Bowl – White (frosty w/ great irid.)
- \_\_\_ 44. **8 3/4" WESTMORELAND DAISY WREATH 6 RUFFLED BOWL – DK. MARI./ MILK GLASS (ABOUT AS GOOD AS IT GETS – SUPER EXAMPLE)**
- \_\_\_ 45. **N BEADED CABLE FTD. RUFFLED ROSE BOWL – PASTEL AQUA OPAL. (ONE OF THE BEST I'VE SEEN – PASTEL!)**
- \_\_\_ 46. **N BEADED CABLE FTD. RUFFLED ROSE BOWL W/ RIBBED INT. – AMETHYST**
- \_\_\_ 47. N Leaf and Beads ftd. Rose Bowl – Aqua Opal. (scarce; very desirable; nice irid.)
- \_\_\_ 48. N Daisy and Plume 3 ftd. Ruffled Rose Bowl w/ Rayed Int. – Green
- \_\_\_ 49. 8 1/4" N Star of David and Bows Domed 8 Ruffled Bowl – Purple
- \_\_\_ 50. **N SINGING BIRDS HANDLED MUG – WHITE (RARE & DESIRABLE; NICE COLOR – FROSTY)**
- \_\_\_ 51. **8 7/8" N EMBROIDERED MUMS 8 RUFFLED BOWL W/ RIBBED EXT. – PURPLE (VERY SCARCE & VERY DESIRABLE; GREAT IRID.)**
- \_\_\_ 52. 8 5/8" N G&C 8 Ruffled Bowl w/ Plain Ext. – Purple (super irid.)
- \_\_\_ 53. 10 1/4" Tall N Four Pillars Swung Vase – Aqua Opal. (pastel; chip on foot)
- \_\_\_ 54. 10 3/4" Tall N Four Pillars Swung Vase – Aqua Opal. (feet chipped)
- \_\_\_ 55. **11 1/4" TALL N FOUR PILLARS SWUNG VASE – ICE GREEN OPAL. (EXTREMELY RARE COLOR; HAS 2 CHIPPED FEET)**
- \_\_\_ 56. 8 1/4" M'burg Grape Wreath Variant 6 Ruffled Bowl – Amethyst (radium & super!)
- \_\_\_ 57. N G&C 5 pc. Berry Set – Purple (nice set)
- \_\_\_ 58. N Round Handled Bushel Basket – White (frosty w/ nice irid.)
- \_\_\_ 59. N Eight Sided Round Handled Bushel Basket – White (nice & frosty)
- \_\_\_ 60. **N LEAF AND BEADS FTD. ROSE BOWL – WHITE (RARE & DESIRABLE; SUPER IRID. – NICE)**
- \_\_\_ 61. **N LEAF AND BEADS FTD. ROSE BOWL – ELEC. BLUE (SUPER COLOR W/ SUPER IRID.)**
- \_\_\_ 62. N Leaf and Beads ftd. Rose Bowl – Dk. Mari. (really nice color)
- \_\_\_ 63. 10 7/8" N Tree Trunk Standard Swung Vase – Mari./ Green
- \_\_\_ 64. **12" IMPERIAL BEADED BULLSEYE SWUNG VASE – PURPLE (SUPER COLOR & IRID.)**
- \_\_\_ 65. **IMPERIAL BROKEN ARCHES 8 PC. ROUND PUNCH SET – PURPLE (SUPER, SUPER SET; HAS SOME IMPACT DAMAGE ON BOWL)**
- \_\_\_ 66. 11 1/4" Tall Imperial Ripple Swung Vase – Helios Green
- \_\_\_ 67. 10 3/4" Tall Dugan Big Basketweave Swung Vase – White (frosty w/ great irid.)
- \_\_\_ 68. 9 3/4" Tall Fenton Rustic Swung Vase – White (super irid.)
- \_\_\_ 69. Fenton Garland ftd. Rose Bowl – Blue
- \_\_\_ 70. **FENTON HORSEHEAD MEDALLION FTD. J.I.P. BOWL – BLUE (VERY SCARCE; NICE DETAIL & IRID.)**
- \_\_\_ 71. Pair Autumn Leaf (?) Lamp Shades – Mari. (selling so much each for the pair)
- \_\_\_ 72. 1981 LaCrosse, WI ICGA Frolicking Bears Spittoon Souvenir – Aqua Opal. (scarce)
- \_\_\_ 73. 1982 Elkhart, Ind. ICGA Frolicking Bears Spittoon Souvenir – Red (scarce)
- \_\_\_ 74. 2002 St. Louis, MO ICGA Frolicking Bears J.I.P. Souvenir - Red
- \_\_\_ 75. **ROBERT HANSEN CHERRY WREATH CREAMER – RED (VERY SCARCE; SUPER, SUPER IRID.)**
- \_\_\_ 76. **ROBERT HANSEN WHIMSEY FLARED CHERRY WREATH SPOONER – RED (SUPER COLOR & IRID.; VERY DESIRABLE)**
- \_\_\_ 77. Unsigned Hansen Whimsey Flared Cherry Wreath Spooner – Red (super color & irid.; very desirable)
- \_\_\_ 78. Robert Hansen S-Repeat Toothpick Holder – Red (super color & irid.)
- \_\_\_ 79. **RON HANSEN "GALLOWAY" RUFFLED TOOTHPICK HOLDER – GREEN (EARLY ITEM; ODD COLOR; SATINY FINISH)**
- \_\_\_ 80. Robert Hansen Turkey Toothpick Holder – Red (super color; has check in holder)
- \_\_\_ 81. Robert Hansen Tree Stump Toothpick Holder – Red (super color & irid.)
- \_\_\_ 82. Robert Hansen Tree Stump Toothpick Holder – Red (super color & irid.)
- \_\_\_ 83. Unsigned Hansen Daisy and Button Toothpick Holder – Red (super color & irid.)
- \_\_\_ 84. Unsigned Hansen "Vermont" 3 ftd. Toothpick Holder – Blue (nice irid.; satiny finish)
- \_\_\_ 85. Initialed Hansen Handled Basketweave Mini-Basket – Blue (super irid.)
- \_\_\_ 86. **RONALD E. HANSEN HOBNAIL CRIMPED EDGE ROSE BOWL – RED/ AMBERINA (HAS TO BE AN EARLY EXAMPLE; REALLY NICE)**



- \_\_\_ 87. Robert Hansen Moon and Stars (?) Rose Bowl – Red (super color & irid.)
- \_\_\_ 88. Robert Hansen Moon and Stars (?) Rose Bowl – Red (super color & irid.)
- \_\_\_ 89. **4 3/4" TALL ROBERT HANSEN MOON AND STARS LG. TUMBLER – RED (NICE LARGE ITEM; SUPER IRID.)**
- \_\_\_ 90. **ROBERT HANSEN MOON AND STARS SUGAR SHAKER W/ LID – RED (RARE & DESIRABLE; SUPER IRID.)**
- \_\_\_ 91. **PAIR ROBERT HANSEN MOON AND STARS BREAKFAST OPEN SUGAR & CREAMER – RED (VERY RARE PAIR; GREAT COLOR W/ EXCELLENT IRID.)**
- \_\_\_ 92. **PAIR ROBERT HANSEN EYEWINKER COVERED SUGAR & CREAMER – RED (ANOTHER RARE SET, ESPECIALLY THE LID – TRY TO FIND ANOTHER)**
- \_\_\_ 93. Unsigned Hansen Hobstar and Fine Cut Tumbler – Red/ Amberina (rare w/ nice irid.)
- \_\_\_ 94. Unsigned Hansen Fleur de Lis Tumbler – Aqua/ Mari. (rare w/ odd tint)
- \_\_\_ 95. **ROBERT HANSEN FORTY NINER TUMBLER – COBALT BLUE (ABSOLUTELY SUPER IRID. – GREAT COLOR)**
- \_\_\_ 96. **UNSIGNED HANSEN FORTY NINER TUMBLER W/ 8 RUFFLED EDGE – RED (ANOTHER SUPER ITEM W/ A GREAT SHAPE)**
- \_\_\_ 97. Ronald E. Hansen Concave Honeycomb Juice Glass – Red (very scarce; nice color)
- \_\_\_ 98. Robert Hansen Concave Honeycomb Whimsey Swung Juice Glass – Red (another great item; nice color)
- \_\_\_ 99. Novelty Wooden Bucket w/ Wire Bale Handle Toothpick Holder – Lt. Mari. (scarce novelty; small flake on edge)
- \_\_\_ 100. **MAKER (?) DOZEN ROSES FTD. FLARED BOWL – AMETHYST (VERY RARE W/ A GREAT RADIUM FINISH; NICE)**
- \_\_\_ 101. **7 1/4" X 7 1/4" M'BURG STRAWBERRY WREATH 4 SIDED SQUARE BOWL – AMETHYST (RADIUM & RARE; TOUGH SHAPE W/ GREAT IRID.)**
- \_\_\_ 102. 7 1/4" M'burg Strawberry Wreath Ice Cream Shaped Bowl – Amethyst (sorta rose bowl shaped; great radium finish)
- \_\_\_ 103. 10 1/4" M'burg Nesting Swan 6 Ruffled Bowl – Green (satiny & nice; scarce item)
- \_\_\_ 104. 7 1/4" M'burg Hanging Cherries Ice Cream Shaped Bowl – Green (really nice satiny finish)
- \_\_\_ 105. **M'BURG HOBNAIL COVERED BUTTER DISH – MARI. (VERY RARE ITEM; PERFECT W/ A NICE SATINY FINISH)**
- \_\_\_ 106. 8" M'burg Mayan Ice Cream Shaped Bowl – Green (radium & nice)
- \_\_\_ 107. M'burg Holly Sprig 2 Sided Card Tray w/ Isaac Benesch 54<sup>th</sup> Anniversary – Mari. (satiny finish)
- \_\_\_ 108. Cambridge Inverted Strawberry Covered Powder Jar – Green (scarce; lid has light irid.)
- \_\_\_ 109. Cambridge Inverted Feather Covered Cracker Jar – Green (scarce; nice color)
- \_\_\_ 110. **CAMBRIDGE INVERTED THISTLE HANDLED WATER PITCHER – AMETHYST (EXTREMELY RARE COLOR; SUPER EXAMPLE; TOUGH TO FIND)**
- \_\_\_ 111. Cambridge Double Star Handled Water Pitcher – Mari. (rare & nice – but cracked)
- \_\_\_ 112. Cambridge Double Star 7 pc. Water Set – Green (very scarce complete set; great color)
- \_\_\_ 113. **CAMBRIDGE INVERTED STRAWBERRY 2 HANDLED CELERY VASE – GREEN (EXTREMELY RARE ITEM IN A VERY RARE COLOR; SUPER TOUGH)**
- \_\_\_ 114. Cambridge Inverted Strawberry 2 Handled Spooner – Mari. (scarce; satiny)
- \_\_\_ 115. **CAMBRIDGE VENETIAN GIANT ROSE BOWL – DK. MARI. (EXTREMELY RARE – HAS A CHECK IN BODY)**
- \_\_\_ 116. **CAMBRIDGE VENETIAN GIANT ROSE BOWL – GREEN (RARE & VERY DESIRABLE; GREAT COLOR & IRID.)**
- \_\_\_ 117. Newer Fenton Inverted Strawberry Stemmed J.I.P. Crimped Edge Compote – Ice Green Opal. (new & nice – great shape)
- \_\_\_ 118. Newer Fenton Inverted Strawberry Flat Edge Compote – Ice Green Opal. (new & nice)
- \_\_\_ 119. Newer Fenton Inverted Strawberry 6 Ruffled Stemmed Rose Bowl – Aqua Opal. (new & nice)
- \_\_\_ 120. **FENTON STRAWBERRY SCROLL HANDLED WATER PITCHER – BLUE (VERY RARE & VERY DESIRABLE; GREAT SHAPE W/ REALLY NICE IRID.)**
- \_\_\_ 121. **FENTON STRAWBERRY SCROLL HANDLE WATER PITCHER – MARI. (EXTREMELY RARE & VERY DESIRABLE; TOUGH TO FIND)**
- \_\_\_ 122. 9 1/4" Fenton Plaid Flared Plate – Mari. (very scarce shape; rare)
- \_\_\_ 123. 8 3/8" Fenton Plaid Ice Cream Shaped Bowl – Mari. (scarce)
- \_\_\_ 124. 9" Fenton Plaid 8 Ruffled Bowl – Blue (nice color; scarce)
- \_\_\_ 125. **6 1/8" FENTON "GERVURTZ BROS. FURNITURE & CLOTHING – UNION AVENUE EAST BURNSIDE ST" GARDEN MUMS ADVERTISING HANDGRIP PLATE – AMETHYST (RARE & EXTREMELY DESIRABLE; GREAT IRID.)**
- \_\_\_ 126. **6 1/8" FENTON "UTAH LIQUOR CO. – LEWIS 66 RYE – PHONE 478 - 223 S. MAIN ST." GARDEN MUMS ADVERTISING HANDGRIP PLATE – AMETHYST (RARE & DESIRABLE; NICE)**
- \_\_\_ 127. **5 1/4" FENTON "BRAZIERS CANDIES" GARDEN MUMS DEEP ROUND ADVERTISING BOWL – AMETHYST (ANOTHER RARE ITEM; TOUGH TO FIND)**



- \_\_\_ 128. Fenton 2 Row Open Edge Basketweave 2 Sided Hat w/ "Millers Furniture" Advertising – Mari. (nice color)
- \_\_\_ 129. 17 ¼" Tall x 4 1/8" Base Fenton Rustic Mid-size Swung Vase – Blue (super size; nice)
- \_\_\_ 130. **FENTON ORANGE TREE SCROLL 7 PC. TANKARD WATER SET – BLUE (VERY RARE; COMPLETE W/ NICE COLOR AND IRID.)**
- \_\_\_ 131. **FENTON ENAMELED COLUMBINE/ ZIG ZAG BULBOUS 6 PC. WATER SET – BLUE (SUPER COLOR & IRID. – NICE SET)**
- \_\_\_ 132. **8 ¾" FENTON VINTAGE GRAPE 8 RUFFLED BOWL – AMBER (VERY RARE COLOR; SUPER EXAMPLE; NICE)**
- \_\_\_ 133. 6 5/8" Fenton Acorn Deep Round Flared Bowl – Red (great color; rare)
- \_\_\_ 134. 9 5/8" Tall Fenton Fine Rib Standard Swung Vase – Red/ Dark Red Streaks (rare & unusual; slag effect)
- \_\_\_ 135. **FENTON STRETCH DOUBLE DOLPHIN 4 SIDED FTD. COMPOTE – TOPAZ (ATTRACTIVE W/ GREAT COLOR)**
- \_\_\_ 136. Fenton Rose Spray J.I.P. Stemmed Compote – Florentine Green (nice color)
- \_\_\_ 137. Fenton Orange Tree Covered Powder Jar – Blue
- \_\_\_ 138. Fenton Orange Tree Covered Powder Jar – Mari.
- \_\_\_ 139. **FENTON 10 MUMS 7 PC. TANKARD WATER SET – MARI. (RARE SET TO FIND COMPLETE; NICE COLOR)**
- \_\_\_ 140. **9 ½" FENTON CONCORD GRAPE FLARED PLATE – GREEN (VERY RARE W/ A BRIGHT FINISH; REALLY NICE)**
- \_\_\_ 141. 9" Fenton Concord Grape Flared Plate – Amethyst (rare item; has a tiny flake on back edge)
- \_\_\_ 142. 9 3/8" Fenton Captive Rose Flared Plate – Green (very scarce; nice satiny finish)
- \_\_\_ 143. **9 ¼" FENTON CAPTIVE ROSE FLARED PLATE – DK. MARI. (RARE COLOR; VERY ATTRACTIVE)**
- \_\_\_ 144. **9 ½" FENTON HOLLY FLARED PLATE – BLUE (GREAT IRID.; REALLY NICE EXAMPLE)**
- \_\_\_ 145. 9" Fenton Holly Bowl w/ 3 in 1 Edge – Aqua (very rare base color; sorta pastel)
- \_\_\_ 146. **8 ¾" FENTON VINTAGE GRAPE 6 RUFFLED BOWL – AQUA OPAL. (VERY RARE ITEM; HAS TO BE ONE OF THE BETTER EXAMPLES)**
- \_\_\_ 147. **FENTON FLUFFY PEACOCK BULBOUS HANDLED WATER PITCHER – AMETHYST (RARE & DESIRABLE ITEM; NICE COLOR)**
- \_\_\_ 148. Fenton Fluffy Peacock Tumbler – Amethyst (nice example)
- \_\_\_ 149. **FENTON FLUFFY PEACOCK BULBOUS HANDLED WATER PITCHER – BLUE (ANOTHER DESIRABLE ITEM; NICE COLOR)**
- \_\_\_ 150. **7 ½" TALL BROCKOWITZ ROSE GARDEN FLAT FAN VASE – BLUE (EXTREMELY RARE; NICE LARGE SIZE; NICE)**
- \_\_\_ 151. **8 ¼" TALL KARHULA SPINNING STAR CYLINDER VASE – BLUE (RARE & UNUSUAL; TOUGH TO FIND)**
- \_\_\_ 152. **3 ½" TALL X 5 ¼" DIAM. RIIHIMAKI (OR EDA) SUNK DAISY FTD. BOWL – BLUE (RARE ITEM; TOUGH TO FIND)**
- \_\_\_ 153. Cristalerias Piccardo Rising Sun domed Handled Water Pitcher – Blue (rare color; tough)
- \_\_\_ 154. 8 ¼" Tall Sowerby Pinwheel Cylinder Vase – Amethyst (rare & desirable)
- \_\_\_ 155. **6" TALL EDA KULOR ROUND FTD. PINCHED IN VASE – BLUE (RARE & EXTREMELY DESIRABLE; NICE)**
- \_\_\_ 156. **8" TALL EDA KULOR ROUND FTD. PINCHED IN VASE – DK. MARI. (ANOTHER RARE & DESIRABLE ITEM; SUPER)**
- \_\_\_ 157. 6 ½" Tall Brockowitz (or Eda) Curved Star ftd. Chalice – Mari. (scarce)
- \_\_\_ 158. 5 ¼" Tall Jain Left Hand Vase – Mari. (scarce)
- \_\_\_ 159. **BROCKOWITZ SUPERSTAR OVAL BOWL – DK. MARI. (SUPER COLOR; SUPER ITEM; NICE)**
- \_\_\_ 160. Cristalerias Piccardo Rising Sun domed Handled Water Pitcher – Mari. (rare & desirable)
- \_\_\_ 161. Cristalerias Piccardo Rising Sun ftd. Handled Water Pitcher – Mari. (another rare item)
- \_\_\_ 162. Jain Beaded Spear Handled Water Pitcher – Mari. (really unusual – very different)
- \_\_\_ 163. **9 1/8" TALL BROCKOWITZ ROSE GARDEN CYLINDER VASE – MARI. (RARE SHAPE & RARE COLOR; NICE)**
- \_\_\_ 164. 10 1/8" Tall Inwald Coronet Vase – Dk. Mari. (super color & very unusual)
- \_\_\_ 165. **10 ¾" DUGAN FARMYARD BOWL W/ 3 IN 1 EDGE – AMETHYST (VERY RARE & VERY DESIRABLE; NICE COLOR)**
- \_\_\_ 166. **10 ¾" DUGAN WISHBONE AND SPADES FLAT CHOP PLATE – AMETHYST (RARE W/ SUPER IRID; GREAT COLOR & FLAT)**
- \_\_\_ 167. 8 7/8" Dugan Round Up Flared Plate – Amethyst (odd finish)
- \_\_\_ 168. **8 ¾" DUGAN ROUND UP LOW RUFFLED PLATE – DK. P. OPAL. (HAS TO BE ONE OF THE BEST I'VE SEEN)**
- \_\_\_ 169. 10 ½" Dugan Ski Star Lg. 8 Ruffled Bowl w/ Jeweled Heart Ext. – P. Opal. (very scarce variation; super example)
- \_\_\_ 170. **DUGAN BUTTERFLY AND TULIP LG. SQUARE FTD. BOWL WITH I.F.F. EXT. – PURPLE (RARE & DESIRABLE; SMALL CHIP AT 2 O'CLOCK)**
- \_\_\_ 171. 8 ¾" Dugan Butterfly and Tulip Deep Round ftd. Bowl w/ I.F.F. Ext. – Amethyst (very scarce & desirable; nice color)
- \_\_\_ 172. 11" Dugan Butterfly and Tulip Deep Round Flared ftd. Bowl w/ I.F.F. Ext. – Mari. (scarce; nice color)
- \_\_\_ 173. **8 ½" DUGAN DOUBLE STEM ROSE DOMED 10 RUFFLED BOWL – CELESTE BLUE (VERY RARE AND HAS A NICE STRETCH EFFECT)**
- \_\_\_ 174. **8 ¾" DUGAN DOUBLE STEM ROSE DOMES 10 RUFFLED BOWL – AQUA/ MARI. (TERRIBLY RARE BASE COLOR; GREAT ITEM)**



- \_\_\_ 175. **DUGAN QUILL HANDLED WATER PITCHER – DK. MARI. (HAS TO BE ONE OF THE BEST – SUPER EXAMPLE)**
- \_\_\_ 176. **DUGAN JEWEL HEART 5 PC. WATER SET – DK. MARI. (VERY RARE SET; GREAT COLOR – SUPER)**
- \_\_\_ 177. **DUGAN CIRCLE SCROLL 6 PC. TABLE SET – MARI. (WHERE WOULD YOU FIND ANOTHER; SUPER)**
- \_\_\_ 178. 9 1/4" Dugan Circle Scroll Lg. Round Master Berry Bowl – Dk. Mari. (very scarce w/ great color)
- \_\_\_ 179. Dugan Beaded Shell Tumbler – Dk. Purple
- \_\_\_ 180. **DUGAN BEADED SHELL FTD. WATER PITCHER – DK. PURPLE (EXTREMELY RARE ITEM; GREAT COLOR & NICE)**
- \_\_\_ 181. **DUGAN BEADED SHELL 6 PC. WATER SET – MARI. (ANOTHER RARE & DESIRABLE SET)**
- \_\_\_ 182. Dugan Beaded Shell ftd. Covered Butter Dish – Mari. (rare item; nice)
- \_\_\_ 183. Dugan Beaded Shell ftd. Spooner – Mari.
- \_\_\_ 184. Dugan Beaded Shell ftd. Master Berry Bowl and (2) ind. Bowls – Dk. Purple (scarce; nice)
- \_\_\_ 185. **DUGAN CHRISTMAS COMPOTE – PURPLE (RARE & DESIRABLE; HAS OPEN BUBBLE ON BASE)**
- \_\_\_ 186. **DUGAN MANY FRUITS RUFFLED PUNCH BOWL W/ FLAT BASE – PURPLE (SUPER IRID. – GREAT COLOR – NICE)**
- \_\_\_ 187. **DUGAN DAHLIA 7 PC. FTD. WATER SET – WHITE W/ BLUE DÉCOR. (EXTREMELY RARE SET; SUPER DÉCOR)**
- \_\_\_ 188. Dugan Dahlia Covered Butter Dish – White w/ Red Décor (another super item)
- \_\_\_ 189. **DUGAN DAHLIA 7 PC. FTD. WATER SET – AMETHYST (RARE AND VERY DESIRABLE SET; NICE)**
- \_\_\_ 190. **IMPERIAL GRAPE 7 PC. WATER SET – PURPLE (SUPER HIGHLIGHTS W/ EXCELLENT IRID.)**
- \_\_\_ 191. 9" Imperial Grape Round Master Berry Bowl – Purple (super, super item)
- \_\_\_ 192. 7 3/4" Imperial Acanthus Deep Round Bowl – Purple (super irid.; nice)
- \_\_\_ 193. 10 1/4" Imperial Acanthus Flat Plate – Smoke (scarce; nice irid.)
- \_\_\_ 194. 10 1/4" Imperial Acanthus Flat Plate – Mari. (nice irid.)
- \_\_\_ 195. **9 1/4" IMPERIAL OPEN ROSE FLAT PLATE – PURPLE (RARE; EXTREMELY DESIRABLE; SUPER IRID.)**
- \_\_\_ 196. **9 1/4" IMPERIAL EMBOSSED SCROLL FLAT PLATE – AMETHYST (FLAT AND NICE W/ EXCELLENT IRID.)**
- \_\_\_ 197. 8 1/8" Imperial Heavy Grape Flat Plate – Purple (nice color & great irid.)
- \_\_\_ 198. **9 1/8" IMPERIAL SHELL FLAT PLATE – SMOKE (SUPER IRID.)**
- \_\_\_ 199. Imperial Hobstar Spooner – Purple (rare; nice irid.)
- \_\_\_ 200. **IMPERIAL LUSTRE ROSE 6 PC. TABLE SET – PURPLE (EXTREMELY RARE SET WITH EXCELLENT IRID.)**
- \_\_\_ 201. 7 1/2" x 5 3/4" Diam. Imperial Beaded Bullseye Swung Vase – Purple (super color & irid.)
- \_\_\_ 202. 8 1/4" x 5 1/4" Diam. Imperial Ripple Squatty Vase – Purple (cracked around base)
- \_\_\_ 203. 8 7/8" Tall x 5 1/4" Diam. Imperial Ripple Swung Vase – Lt. Amethyst (super color & irid.)
- \_\_\_ 204. 8 1/4" Tall Imperial Etched "Balloons" Lg. Round Vase – Lt. Smoke (rare; great size & irid.)
- \_\_\_ 205. **IMPERIAL COLONIAL LADY 4 SIDED TOP VASE – PURPLE (RARE & DESIRABLE; HAS A GOLDISH IRID.)**
- \_\_\_ 206. Imperial Loganberry Vase – Mari. (very scarce; nice color & irid.)
- \_\_\_ 207. **IMPERIAL CORN BOTTLE – GREEN (VERY SCARCE; REALLY NICE)**
- \_\_\_ 208. **IMPERIAL FILE HANDLED WATER PITCHER – MARI. (RARE ITEM: NICE COLOR & IRID.)**
- \_\_\_ 209. 7 7/8" Imperial Jewels Flat Plate – signed w/ Iron Cross – Dk. Mari. (very desirable; nice irid.)
- \_\_\_ 210. 7 3/4" Tall x 8 5/8" Diam. Imperial Jewels Lg. 8 Ruffled Vase – Amethyst (nice but cracked across base)
- \_\_\_ 211. **4" TALL X 5 3/4" DIAM. IMPERIAL JEWELS SQUATTY 8 RUFFLED VASE – SIGNED WITH IRON CROSS – DK. MARI. (REALLY, REALLY NICE SIZE & COLOR)**
- \_\_\_ 212. **10 3/4" U.S. GLASS COSMOS AND CANE FLAT CHOP PLATE – HONEY AMBER (EXTREMELY RARE WHIMSEY ITEM; NICE)**
- \_\_\_ 213. N Grape and Gothic Arches Handled Water Pitcher – Blue
- \_\_\_ 214. 9 3/4" Tall N Tree Trunk Standard Swung Vase – Purple (super, super irid.)
- \_\_\_ 215. **8 7/8" N EMBROIDERED MUMS BOWL W/ P.C.E. AND RIBBED EXT. – SAPPHIRE (EXTREMELY RARE & VERY DESIRABLE; NOT MANY KNOWN)**
- \_\_\_ 216. **8 3/4" N EMBROIDERED MUMS 8 RUFFLED BOWL W/ RIBBED EXT. – ICE GREEN OPAL/SLAG (EXTREMELY RARE; ONLY A FEW KNOWN)**
- \_\_\_ 217. **8 3/4" N EMBROIDERED MUMS 8 RUFFLED BOWL W/ RIBBED EXT. – AQUA OPAL. (MORE BLUE OPAL; VERY RARE & DESIRABLE)**
- \_\_\_ 218. 8 3/4" N Embroidered Mums 8 Ruffled Bowl w/ Ribbed Ext. – Mari. (scarce; nice irid.)
- \_\_\_ 219. 8 3/4" N Embroidered Mums 8 Ruffled Bowl w/ Plain Ext. – Ice Blue (rare & desirable; nice goldish highlights)
- \_\_\_ 220. **9 1/4" N HEARTS AND FLOWERS FLAT PLATE W/ RIBBED AND NON-IRIDIZED EXT. – VASELINE (EXTREMELY RARE; THIS ITEM IS DAMAGED – CHIP ON ONE POINT AND BASE HAIRLINE)**
- \_\_\_ 221. **9 1/4" N STRAWBERRY PLATE W/ BASKETWEAVE EXT. – DK. DK. MARI. (ONE OF THE BEST)**



222. 9" N Strawberry Plate w/ Basketweave Ext. – Green (satiny; nice) 248.
223. 9" N Strawberry Plate w/ Plain Ext. – Lt. Amethyst (wants to be lavender; nice irid.) 249.
224. 8 3/4" N ROSE SHOW VARIANT 8 RUFFLED BOWL W/ RIBBED EXT. – RENNINGER BLUE (RARE & DESIRABLE; GREAT PATTERN; NICE) 250.
225. 9 1/2" N ROSE SHOW FLARED PLATE – ICE GREEN (RARE & VERY DESIRABLE; GREAT COLOR & IRID.) 251.
226. 9 1/2" N ROSE SHOW FLARED PLATE – MARI. (VERY SCARCE W/ NICE COLOR & IRID.) 252.
227. 8 3/4" N ROSE SHOW 8 RUFFLED BOWL – GREEN (RARE & VERY DESIRABLE COLOR; NICE) 253.
228. N G&C Covered Powder Jar – Amethyst 254.
229. N G&C Covered Powder Jar – Mari. 255.
230. N G&C HANDLED CRACKER JAR AND LID – WHITE (EXTREMELY RARE W/ EXCELLENT IRID. – WOW!) 256.
231. N G&C Handled Cracker Jar and Lid – Dk. Mari. (another super item) 257.
232. N G&C Handled Cracker Jar and Lid – Purple (chips around base rim – lid ok) 258.
233. N G&C Turned In ftd. Centerpiece Bowl – Purple (scarce; satiny) 259.
234. 8 3/4" N G&C Variant Plate w/ Ribbed Ext. – Green (rare w/o Advertising – great color) 260.
235. N G&C 8 PC. FLARED PUNCH SET – DK. MARI. (DARK & VERY DESIRABLE SHAPE) 261.
236. N G&C STIPPLED COVERED HUMIDOR – DK. MARI. (EXTREMELY RARE VARIATION W/ GREAT COLOR) 262.
237. N G&C Covered Humidor – Purple (rare but has a cracked lid) 263.
238. N IVY TOWN PUMP NOVELTY – PURPLE (RARE; ALWAYS IN DEMAND; PERFECT) 264.
239. N Ivy Town Pump Novelty – Dk. Mari. (great color; damaged at base of handle) 265.
240. N ORIENTAL POPPY TANKARD WATER PITCHER W/ RIBBED INT. – WHITE (RARE & SUPER FROSTY W/ GREAT IRID.) 266.
241. N Oriental Poppy Tumbler – White (great irid.; nice) 267.
242. N ORIENTAL POPPY TANKARD WATER PITCHER – GREEN (RARE W/ GREAT COLOR; NICE IRID.) 268.
243. N ORIENTAL POPPY 7 PC. TANKARD WATER SET – PURPLE (SCARCE W/ NICE COLOR & IRID.) 269.
244. (2) N Peacock at the Fountain Handled Punch Cups – Dk. Mari. (selling so much each for the pair) 270.
245. N PEACOCK AT THE FOUNTAIN PUNCH BOWL AND BASE – BLUE (RARE & VERY DESIRABLE; NICE COLOR & IRID.) 271.
246. (2) N Peacock at the Fountain Handled Punch Cups – Blue (selling so much each for the pair)
247. N Peacock at the Fountain Tumbler – Purple (absolutely super example)
- N PEACOCK AT THE URN 7 PC. ICE CREAM SET – PURPLE (RARE AND WELL MATCHED SET; PERFECT & NICE)
- N Springtime Spooner – Green (scarce item)
- N SPRINGTIME 6 PC. TABLE SET – DK. MARI. (GREAT SET; COMPLETE W/ EXCELLENT COLOR)
- N Singing Birds Handled Mug – Green (nice example)
- N Singing Birds Handled Mug – Elec. Blue (bright irid.; nice)
- N Singing Birds Handled Mug – Purple (nice irid.)
- N Singing Birds Handled Mug – Dk. Mari. (nice irid.)
- N SUNFLOWER 8 RUFFLED FTD. BOWL W/ MEANDER EXT. – ICE BLUE (EXTREMELY RARE ITEM W/ EXCELLENT IRID.)
- 6 3/8" N "EAGLE FURNITURE CO – 282-284 SOUTH MAIN ST." DOUBLE HANDGRIP ADVERTISING PLATE – AMETHYST (SUPER IRID. & EXTREMELY DESIRABLE – REALLY NICE)
- 6 1/4" N "DAVIDSON'S SOCIETY CHOCOLATES" DOUBLE HANDGRIP ADVERTISING PLATE – AMETHYST (RARE & DESIRABLE; TOUGH TO FIND)
- 5 7/8" N "JOCKEY CLUB" DEEP ROUND FLARED PLATE – LT. AMETHYST (RARE COLOR & SHAPE; EXTREMELY DIFFICULT)
- N Raspberry Handled Milk Pitcher – Lime Ice Green (very rare; has large chip on base)
- N RASPBERRY HANDLED MILK PITCHER – WHITE (PERFECT W/ EXCELLENT IRID.; SUPER EXAMPLE)
- N RASPBERRY HANDLED MILK PITCHER – PURPLE (SUPER, SUPER COLOR & IRID.; NICE)
- N RASPBERRY HANDLED MILK PITCHER – GREEN (SUPER COLOR & IRID.; NICE)
- N Raspberry Handled Milk Pitcher – Dk. Mari. (super, super color & irid.; nice)
- N Raspberry Handled Milk Pitcher – Pastel Mari. (another scarce color; nice)
- 7 3/4" TALL N DRAPERY SWUNG VASE – SAPPHIRE (RARE COLOR & VERY DESIRABLE; NICE)
- 7 3/8" TALL N DRAPERY SWUNG VASE – GREEN (ANOTHER RARE COLOR; SUPER ITEM)
- 7 1/2" Tall N Drapery Swung Vase – Blue (great color & nice irid.)
- 8 3/4" Tall N Drapery Swung Vase – Lime Ice Green (very scarce base color; nice)
- 8 1/2" Tall N Drapery Swung Vase – Ice Green (scarce; nice color & irid.)
- 9" Tall N Drapery Swung Vase – Ice Blue (really tough color; nice irid.)
- 9 1/2" Tall N Drapery Swung Vase – White (scarce w/ great irid.; may have pinhead)



- \_\_\_272. 7 1/2" Tall N Drapery Swung Vase – Dk. Mari. (great color)
- \_\_\_273. **N CORN VASE W/ STALK BASE – WHITE (SUPER EXAMPLE W/ EXCELLENT IRID.)**
- \_\_\_274. N Corn Vase w/ Plain Base – Ice Green (very scarce w/ nice irid.)
- \_\_\_275. **N CORN VASE W/ PLAIN BASE – PURPLE (RARE & DESIRABLE W/ NICE AVERAGE COLOR)**
- \_\_\_276. **9" N GOOD LUCK FLARED PLATE W/ RIBBED EXT. – GREEN (RIBBED EXTERIORS ARE EXCEPTIONAL – NO EXCEPTION HERE!!!)**
- \_\_\_277. **8 5/8" N GOOD LUCK BOWL W/ P.C.E. AND RIBBED EXT. – GREEN (SUPER EXAMPLE; GREAT COLOR & IRID.)**
- \_\_\_278. 9" N Good Luck Plate w/ Basketweave Ext. – Green (satiny & desirable)
- \_\_\_279. **8 5/8" GOOD LUCK 8 RUFFLED BOWL W/ RIBBED EXT. – ELEC. BLUE (REALLY NICE BLUE HIGHLIGHTS – SUPER)**
- \_\_\_280. 9" N Good Luck Flared Plate w/ Basketweave Ext. – Purple (satiny & very desirable)
- \_\_\_281. 8 5/8" N Good Luck Bowl w/ P.C.E. and Basketweave Ext. – Purple (really nice; small flake on edge)
- \_\_\_282. 8 3/4" N Good Luck 8 Ruffled Bowl w/ Basketweave Ext. – Purple (satiny; nice)
- \_\_\_283. 9 1/8" N Good Luck Flared Plate w/ Basketweave Ext. – Mari. (scarce; satiny)
- \_\_\_284. 8 5/8" N Good Luck 8 Ruffled Bowl w/ Basketweave Ext. – Mari. (scarce)
- \_\_\_285. 8 7/8" N Good Luck Bowl w/ P.C.E. and Ribbed Ext. – Dk. Mari. (scarce)
- \_\_\_286. Newer Fenton Christmas Compote – Elec. Blue (super example)
- \_\_\_287. Smith Glass Co. "Octagon" Handled Water Pitcher – Purple
- \_\_\_288. Newer Diamond Point Mid-Size Vase – Ice Blue (not iridized)
- \_\_\_289. (4) 5 1/2" Tall Depression Era Crackle Tumblers – Lt. Mari.
- \_\_\_290. **8 1/2" FENTON CONCORD GRAPE BOWL W/ 3 IN 1 EDGE – AMETHYST (ABSOLUTELY FANTASTIC IRID. – ONE OF THE BEST)**
- \_\_\_291. 5 3/4" Fenton Little Fishes ftd. 6 Ruffled Sauce – Amethyst (scarce)
- \_\_\_292. 5 3/4" Fenton G&C ind. 6 Ruffled Berry Bowl w/ Persian Medallion Int. – Mari. (rare item; very scarce pattern)
- \_\_\_293. 6 3/4" Fenton Acorn I.C. Shaped Bowl – Aqua (average irid.)
- \_\_\_294. 5 5/8" Tall Fenton Ribbed ftd. J.I.P. Vase – Dk. Mari. (super example)
- \_\_\_295. **FENTON FLORAL AND GRAPE 5 PC. BULBOUS WATER SET – BLUE (GREAT COLOR & IRID. – REALLY BRIGHT)**
- \_\_\_296. Fenton Apple Tree 5 pc. Bulbous Water Set – Mari. (excellent example – really nice)
- \_\_\_297. **FENTON ENAMELED SHASTA DAISY WATER PITCHER & (2) TUMBLERS – DK. MARI. (VERY SCARCE PATTERN; SUPER COLOR)**
- \_\_\_298. (1) Fenton Enameled Crocus Tumbler – Mari. and (1) Enameled Daisy and Little Flowers Tumbler – Blue (selling as a pair)
- \_\_\_299. Fenton 10 Mums Tumbler – Blue (satiny finish)
- \_\_\_300. **9 5/8" FENTON HOLLY FLARED PLATE – GREEN (VERY SCARCE COLOR; SATINY FINISH)**
- \_\_\_301. **8 3/4" FENTON LOTUS AND POINSETTIA LG. 3 FTD. FLARED BOWL – GREEN (RARE SIZE AND COLOR; VERY TOUGH TO FIND)**
- \_\_\_302. Fenton Prism Band/ Enameled Columbine Tumbler – Green
- \_\_\_303. Fenton Stretch Engraved Grape 1/4 lb. Covered Candy Jar – Florentine Green (nice item)
- \_\_\_304. 1 1/2" Tall x 3 1/4" Diam. Fenton Stretch Flared Salt – Celeste Blue (scarce)
- \_\_\_305. **5 1/4" TALL FENTON STRETCH NIPPLE TOP PERFUME BOTTLE & STOPPER – GRECIAN GOLD (VERY SCARCE & VERY DESIRABLE)**
- \_\_\_306. Fenton Stretch ftd. Oval Cigarette Holder – Grecian Gold (scarce & very desirable)
- \_\_\_307. Fenton Stretch #857 Lg. Mellon Rib Fan Vase – Velva Rose (nice color)
- \_\_\_308. **11 3/4" TALL ODD FENTON RUSTIC STANDARD MOLD SWUNG VASE – MARI. (BOTTOM PART SWUNG SLIGHTLY; TOP 1/2 SWUNG A LOT; AN UNUSUAL WHIMSEY)**
- \_\_\_309. M'burg Ohio Star Vase – Crystal
- \_\_\_310. **5 3/4" M'BURG PEACOCK IND. ICE CREAM BOWL – GREEN (RADIUM; NO BEE; NO BEADING; VERY SLIGHT MANUF. PEELING)**
- \_\_\_311. **5 1/4" M'BURG PEACOCK IND FLARED BERRY BOWL – GREEN (RADIUM; NO BEE; NO URN; VERY RARE VARIATION)**
- \_\_\_312. **6" M'BURG HOLLY SPRIG CRIMPED EDGE BOWL – GREEN (RADIUM SUPER IRID.)**
- \_\_\_313. **5 1/2" M'BURG STRAWBERRY WREATH VARIANT I.C. SHAPED SAUCE – AMETHYST (RADIUM W/ SUPER BLUE AND RED HIGHLIGHTS; NICE)**
- \_\_\_314. 4" Tall x 5 1/4" Diam. Decorated (Maker ?) ftd. Mayonnaise (or Compote) – Lt. Mari. (never seen this before)
- \_\_\_315. **14" FOSTORIA BROCADED ACORN LG. OVAL CENTER BOWL – LAVENDER (VERY RARE AND DESIRABLE; GREAT SHAPE; ROUGHNESS ON EDGE)**
- \_\_\_316. **FOSTORIA BROCADED ACORN 3 PC. FTD. CONSOLE SET – LAVENDER (SELLING STICKS SEPARATELY; RARE SET)**
- \_\_\_317. **8 1/4" FOSTORIA BROCADED PALMS LG. MELLON RIBBED VASE – ICE GREEN (RARE & VERY DESIRABLE)**
- \_\_\_318. 6 1/4" Fostoria Brocaded Acorn Pinched in Vase – Ice Green (non-iridized & very scarce)



319. 3 ¼" Tall x 5 ¼" Diam. Imperial Brocaded Daffodil ftd. Compote – Ice Green (nice irid.)
320. **5 ¾" N PEACOCK AT THE URN IND. ICE CREAM BOWL – GREEN (RARE & VERY DESIRABLE – GREAT COLOR & IRID.)**
321. **8 3/8" N THREE FRUITS STIPPLED BOWL W/ P.C.E. AND BASKETWEAVE EXT. – GREEN (ANOTHER RARE ITEM W/ GREAT IRID.)**
322. **N THIN RIB LAMP SHADE – GREEN/ MARI. (NEVER SEEN A GREEN N'WOOD SHADE; NICE)**
323. N Acorn Burrs Handled Water Pitcher – Green (nice item but has a chip on base)
324. N Acorn Burrs Tumbler – Green (nice color & irid.)
325. **8 5/8" N STRAWBERRY 8 RUFFLED BOWL W/ PLAIN EXT. – GREEN (VERY SCARCE W/ EXCELLENT IRID. – NICE)**
326. **8 ½" N STRAWBERRY STIPPLED 8 RUFFLED BOWL W/ NARROW BASE & NON-IRIDIZED EXT. – RENNINGER BLUE (SUPER EXAMPLE; GREAT COLOR; PINHEAD ON POINT OF EDGE)**
327. **8 5/8" N POPPY SHOW 8 RUFFLED BOWL – ICE BLUE (RARE & DESIRABLE; NICE)**
328. N Hearts and Flowers Stemmed 6 Ruffled Compote w/ Plain Ext. – White (super irid. – really nice)
329. N Acorn Burrs Punch Base only – White (super irid.)
330. 6 5/8" N Fine Rib Squatty Swung Vase – Mari./ Lime Green (odd base color; very unusual)
331. N Fine Cut and Roses ftd. Ruffled Rose Bowl – Mari.
332. N Singing Birds Stippled Handled Mug – Lt. Mari.
333. (2) N G&C Stippled Handled Punch Cups – Mari. (selling as a pair)
334. N Memphis Punch Base only – Dk. Mari. (super color & irid.)
335. N Eight Sided Handled Bushel Basket – Purple
336. N G&C 6 Ruffled Hat from Tumbler – Purple
337. N G&C Handled Pin Nappy from Punch Cup – Purple (scarce; nice)
338. N G&C Breakfast Handled Creamer – Purple
339. N Singing Birds Tumbler – Purple
340. **DUGAN VINTAGE GRAPE COVERED POWDER JAR – PURPLE (ABSOLUTELY SUPER, SUPER EXAMPLE)**
341. **DUGAN G&C PERFUME BOTTLE & STOPPER – PURPLE (SUPER COLOR & VERY DESIRABLE)**
342. Dugan Grapevine Lattice Tumbler – Purple (satiny)
343. 11 ¾" Dugan Pulled Loop Swung Vase – Purple
344. **5 ¼" TALL DUGAN FRIT TRI-CORNERED ROSE BOWL – PURPLE (REALLY DESIRABLE; GREAT COLOR & TEXTURE)**
345. (3) Dugan Maple Leaf ind. Berry Bowls – Purple (selling so much each for set)
346. Diamond Stretch ½ lb. Covered Candy Jar – Ice Green (nice color)
347. **DUGAN FLORAL AND GRAPE TUMBLER – PASTEL MARI. (SUPER, SUPER ITEM)**
348. Dugan Beaded Shell Handled Mug – Mari. (scarce color)
349. 6 5/8" Dugan Fan 4 ftd. Round Bowl – P. Opal.
350. 8 7/8" Dugan Border Plants domed Bowl w/ 3 in 1 Edge – P. Opal. (scarce pattern)
351. Westmoreland Leaf Swirl Stemmed 6 Ruffled Compote – Amber
352. Westmoreland Prisms ftd. 2 Handled Compote – Amethyst
353. 4" Westmoreland Little Beads ftd. Flared Compote – P. Opal. (nice example)
354. (3) Imperial Bobeches w/ Diamond Prism Design – Mari.
355. **IMPERIAL CORN BOTTLE – DK. MARI. (RARE & VERY DESIRABLE; SUPER ITEM)**
356. **IMPERIAL LITTLE BARREL NOVELTY – SMOKE (SUPER COLOR & IRID. – NICE)**
357. **IMPERIAL EMBOSSED SCROLL MINIATURE STEMMED 6 RUFFLED COMPOTE – AMETHYST (RARE & ALWAYS DESIRABLE; SUPER IRID.)**
358. (2) Imperial Grape Stemmed Wine Glasses – Amethyst (selling so much each for pair)
359. 4" Tall x 5 ¼" Diam. Imperial Interior Wide Panel Mini -Swung Vase – Pastel Mari.
360. **(4) IMPERIAL IRON CROSS STEMMED paneled WINE GLASSES – LT. MARI. (NEVER SEEN THESE BEFORE; SELLING SO MUCH EACH FOR SET)**
361. 7 ¾" Imperial Sand and Shell 8 Ruffled Bowl – Dk. Mari. (great color)
362. 8 ¾" Jefferson Glass Co. Jolly Bear 6 Ruffled Crimped Edge Bowl – Clear Opal. (scarce novelty)
363. 8" Jenkins Field Thistle Deep Round Flared Bowl – Mari. (scarce item)
364. 9 ¾" (Maker ?) Interior Headdress Lg. 6 Ruffled Bowl – Dk. Mari. (super color)
365. (6) (Maker ?) Hobnail Tumblers – Dark
366. Newer Fleur de Lis Tumbler – Lt. Smoke.



DONALD DORAIS  
150 HIGHLAND AVENUE  
CUMBERLAND, RI 02864

Visit [tomburnsauctions.hibid.com](http://tomburnsauctions.hibid.com)  
for pictures and brochures.  
AUCTION FLEX AVAILABLE  
FOR THIS AUCTION. CHECK  
US OUT ON AUCTION ZIP  
#29661



Lot#113

Lee Markley  
Box 306  
Mentone, IN 46539

### CARNIVAL GLASS AUCTION SAT., OCT. 29th at 10:00 A.M.



Lot#140



Lot#100



Lot#101



Lot#320



Lot#125



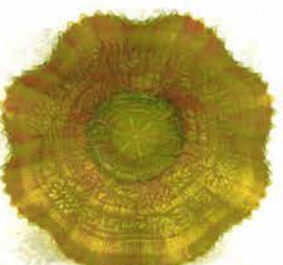
Lot#256



Lot#257



Lot#127



Lot#216



Lot#195



Lot#340



Lot#217