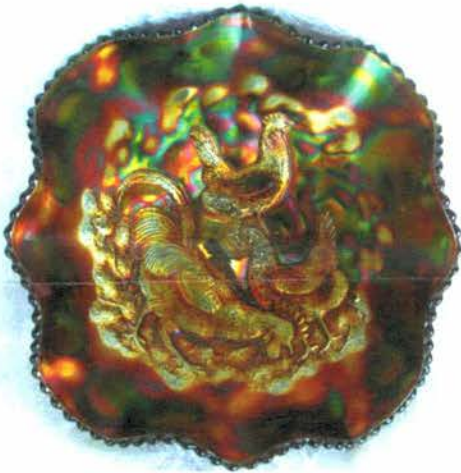


BURNS

AUCTION SERVICE



Lot #205



Lot #125

**2016 MID-ATLANTIC
CARNIVAL GLASS
JAMBOREE**
SATURDAY, OCTOBER 22nd
10:00 A.M.

Preview:

Friday evening, October 21st after banquet
Saturday, October 22nd at 8:00 a.m.

RAMADA PLAZA HOTEL

1718 Underpass Way, Hagerstown, MD
(Exit 5A off I-81)

(301) 797-2500

For more information, call/write Tom Burns
6723 Route 415 South, Bath, New York 14810



Lot #251



Lot #210



Lot #90



Lot #91

We are pleased to be selling the collection of Doug & Sue Siska from the Poconos at this year's 2016 Mid-Atlantic Carnival Glass Jamboree Auction. Doug shops all the antique malls and flea markets while traveling to the many auctions he attends. We hope that ya'll might stop by. You'll be sure to enjoy it.

The Ramada Plaza Hotel will host the event once again. The hotel is located at 1718 Underpass Way, Exit 5A on I-81. For information, call the hotel directly at (301) 797-2500.

1. All terms and conditions as previous auctions.
2. **This auction will be on auction flex.** All auction flex bids are due by 8:00 a.m. Saturday, October 22nd.
3. For further information, call **Tom Burns at (407) 592-6552.**
4. All photos and listings can be viewed at www.necga.com. Click on Carnival Glass Links Page and Look for Burns Auction.
5. For further information on the Mid-Atlantic Jamboree, call Beth Margerum at (609) 273-8213 or email at bethmargerum@verizon.net.
6. **MAKE YOUR RESERVATIONS ASAP. THE HOTEL IS FILLING UP FAST!**

- | | | | |
|---------|---|---------|--|
| ___ 1. | "Big Butterfly" Hatpin – Dark | ___ 22. | M'BURG MARILYN 7 PC. WATER SET – AMETHYST (RARE & VERY DESIRABLE; GREAT COLOR & IRID.) |
| ___ 2. | "Flowered Daisy" Hatpin – Amber (light lustre) | ___ 23. | 8 7/8" M'burg Peacock at the Urn "Mystery" Bowl w/ 3 in 1 Edge – Amethyst (radium & perfect ; great irid.) |
| ___ 3. | "Bullet" Geometric Hatpin – Black Amethyst (nice) | ___ 24. | 10" M'BURG MANY STARS LG. 6 RUFFLED BOWL W/ 5 POINTED STAR – AMETHYST (RADIUM W/ EXCELLENT COLOR & IRID.) |
| ___ 4. | "LIZARD" HATPIN – BLACK AMETHYST (EXTREMELY RARE ITEM W/ A SILVERY IRID.; TOUGH!) | ___ 25. | 7 3/4" M'BURG LETTERED COURTHOUSE 6 RUFFLED BOWL – AMETHYST (RADIUM & VERY DESIRABLE; PEELING ON EDGE) |
| ___ 5. | M'BURG HOBSTAR AND FEATHER 9 PC. FLARED MASTER PUNCH SET – MARI. (RARE & DESIRABLE SET; PERFECT W/ NICE COLOR) | ___ 26. | 7 7/8" M'BURG TROUT AND FLY I.C. SHAPED BOWL – GREEN (RADIUM IN A GREAT SHAPE) |
| ___ 6. | M'burg Diamond 7 pc. Water Set – Mari. (nice well matched set) | ___ 27. | 8 1/8" M'burg Trout and Fly I.C. Shaped Bowl – Amethyst (very desirable; nice satiny finish) |
| ___ 7. | M'burg Poppy Stemmed Flared Compote – Mari. (light int. lustre; tough color to find) | ___ 28. | 8 1/2" M'burg Trout and Fly 6 Ruffled Bowl – Green (very desirable; nice satiny finish) |
| ___ 8. | 9 3/4" M'burg Peacock Flared Master Berry Bowl – Mari. (radium finish; very desirable; nice) | ___ 29. | 8 3/4" N Strawberry Plate w/ Plain Ext. – Amethyst (scarce w/ excellent irid.) |
| ___ 9. | M'BURG MARILYN 7 PC. WATER SET – MARI. (RARE SET W/ REALLY NICE SATINY FINISH) | ___ 30. | 9" N ROSE SHOW 8 RUFFLED BOWL – ICE GREEN OPAL. (RARE & VERY DESIRABLE; PASTEL W/ EXCELLENT IRID.- REALLY NICE) |
| ___ 10. | 8 1/2" M'BURG BIG FISH BOWL W/ 3 IN 1 EDGE – MARI. (RADIUM & VERY DESIRABLE; NICE COLOR) | ___ 31. | 9 1/2" N ROSE SHOW FLARED PLATE – GREEN (RARE & DESIRABLE; VERY TOUGH TO FIND) |
| ___ 11. | M'BURG SWIRL HOBNAIL SPITTOON – MARI (RARE & DESIRABLE; NICE COLOR AND CONDITION) | ___ 32. | 9 1/2" N ROSE SHOW FLARED PLATE – ELEC. BLUE (SUPER IRID.; EXCELLENT COLOR & IRID.; NICE ITEM) |
| ___ 12. | M'burg Swirl Hobnail Rose Bowl – Mari. (nice color & irid.; excellent example) | ___ 33. | 9 1/2" N ROSE SHOW FLARED PLATE – LT. AMETHYST (ODD TINT; GREAT BASE COLOR W/ NICE IRID.) |
| ___ 13. | M'BURG HOBNAIL SPITTOON – MARI. (RARE & DESIRABLE; PERFECT W/ NICE COLOR) | ___ 34. | 9 3/8" N Rose Show Flared Plate – White (scarce; frosty & nice) |
| ___ 14. | M'burg Hobnail Rose Bowl – Mari. (very scarce; nice color) | ___ 35. | N DANDELION HANDLED MUG W/ 1912 KNIGHTS TEMPLAR – ICE GREEN (RARE & VERY DESIRABLE; GREAT COLOR & IRID.) |
| ___ 15. | M'BURG HOBNAIL SPITTOON – GREEN (VERY RARE AND VERY DESIRABLE; YOU NEVER SEE THESE FOR SALE; MAY HAVE PINHEAD) | ___ 36. | N DANDELION HANDLED MUG W/ 1912 KNIGHTS TEMPLAR – ICE BLUE (RARE & VERY DESIRABLE; GREAT COLOR & IRID.) |
| ___ 16. | M'BURG HOBNAIL ROSE BOWL – GREEN (VERY RARE COLOR; HAS A 3" HAIRLINE; SO TOUGH TO FIND) | ___ 37. | N DANDELION HANDLED MUG W/ 1912 KNIGHTS TEMPLAR – DK. MARI. (REALLY NICE COLOR & IRID.; TOUGH TO FIND) |
| ___ 17. | M'BURG HOBNAIL SPITTOON – AMETHYST (RARE & DESIRABLE; NICE COLOR & IRID.) | ___ 38. | N DANDELION HANDLED MUG – AQUA OPAL. (RARE & ALWAYS DESIRABLE; NICE OPAL & IRID.) |
| ___ 18. | M'burg Hobnail Rose Bowl – Amethyst (scarce; nice color & irid.) | ___ 39. | N Dandelion Handled Mug – Dk. Mari. (very scarce; nice color & irid.) |
| ___ 19. | M'burg Swirl Hobnail Rose Bowl – Purple (scarce; really nice example) | | |
| ___ 20. | M'BURG SWIRL HOBNAIL SPITTOON – PURPLE (VERY DESIRABLE ITEM W/ EXCELLENT IRID. & SHAPE) | | |
| ___ 21. | 6 1/8" M'BURG PEACOCK FLARED PLATE – LT. AMETHYST (VERY DESIRABLE W/ A SUPER SATINY FINISH) | | |

- ___40. N Dandelion Handled Mug – Blue (very scarce base color; nice irid.) ___66. N Singing Birds Handled Mug – Elec. Blue (super irid.)
 ___41. N Dandelion Handled Mug – Green (scarce & really tough to find color) ___67. N Singing Birds Handled Mug w/ Amazon Hotel Advertising – Purple (scarce w/ excellent stencil advertising)
 ___42. N Dandelion Handled Mug – Purple (scarce; nice) ___68. N Singing Birds Handled Mug – Lt. Amethyst (odd light base color w/ great irid.)
 ___43. **N NIPPON 8 RUFFLED BOWL W/ RIBBED EXT. – ICE GREEN (RARE COLOR FOR THIS PATTERN; NICE IRID.)** ___69. **N SINGING BIRDS HANDLED MUG W/ “HOTEL REDINGTON, WILKES-BARRE, PA” – PURPLE (DON’T REMEMBER SEEING THIS ADVERTISING)**
 ___44. N Nippon Bowl w/ P.C.E. & Basketweave Ext. – White (frosty & scarce) ___70. N Singing Birds Handled Mug – Dk. Mari. (super color)
 ___45. **N PEACOCKS 8 RUFFLED BOWL W/ RIBBED EXT. – AQUA OPAL. (VERY ATTRACTIVE PASTEL FINISH)** ___71. **N SINGING BIRDS STIPPLED MUG – GREEN (RARE & VERY DESIRABLE; NICE IRID.)**
 ___46. **N PEACOCKS 8 RUFFLED BOWL W/ RIBBED EXT. – AQUA OPAL. (VERY ATTRACTIVE BUTTER-SCOTCH OVERLAY – NICE)** ___72. **N SINGING BIRDS STIPPLED MUG – BLUE (ANOTHER RARE ITEM W/ GREAT IRID.)**
 ___47. N Peacocks 8 Ruffled Bowl w/ Ribbed Ext. – Blue Opal. (non-iridized & very scarce) ___73. N Singing Birds Stippled Mug – Dk. Mari. (super example)
 ___48. **N PEACOCKS 8 RUFFLED BOWL W/ RIBBED EXT. – AQUA/ MARI. (RARE BASE COLOR; HAS A NICE MARIGOLD OVERLAY)** ___74. N Singing Birds Stippled Mug – Custard/ Nutmeg (nice example)
 ___49. N Peacocks 8 Ruffled Bowl w/ Ribbed Ext. – Dk. Mari. (really nice dark color) ___75. **N G&C FTD. HATPIN HOLDER – LAVENDER (VERY RARE BASE COLOR; SUPER IRID. & TOUGH TO FIND)**
 ___50. **8 ¾” N PEACOCKS 8 RUFFLED BOWL W/ BASKETWEAVE EXT. – PURPLE (RARE VARIATION W/ EXCELLENT IRID.)** ___76. N G&C ftd. Hatpin Holder – Black Amethyst (scarce; nice irid.)
 ___51. **9” N PEACOCKS PLATE W/ RIBBED EXT. – ELEC. BLUE (SUPER COLOR & IRID.; REALLY DESIRABLE)** ___77. N G&C ftd. Hatpin Holder – Purple (really nice irid.)
 ___52. **8 ¾” N Peacocks Plate w/ Ribbed Ext. – Ice Green (very scarce w/ nice irid.)** ___78. N G&C ftd. Hatpin Holder – Green (nice color & irid.)
 ___53. **9” N Peacocks Plate w/ Ribbed Ext. – Amethyst (very desirable w/ really nice irid.)** ___79. N G&C ftd. Hatpin Holder – Dk. Mari. (really nice example)
 ___54. **9” N Peacocks Plate w/ Plain Ext. – White (plain exterior items always have super irid.)** ___80. **N G&C SMALL-SIZE FTD. RUFFLED FRUIT BOWL – ELEC. BLUE (VERY DESIRABLE IRID.; SUPER ITEM & NICE)**
 ___55. **8 ¾” N Peacocks Bowl w/ P.C.E. and Ribbed Ext. – Blue (great shape w/ excellent irid.)** ___80A. **N G&C LG. ICE CREAM BOWL – ICE GREEN (RARE AND DESIRABLE; SUPER PINK AND YELLOW HIGHLIGHTS)**
 ___56. **8 5/8” N Peacocks Bowl w/ P.C.E. and Ribbed Ext. – Dk. Mari. (scarce; really nice irid.)** ___81. N G&C 7 pc. Water Set – Green (scarce; nice color)
 ___57. **N SINGING BIRDS 7 PC. WATER SET – PURPLE (VERY DESIRABLE; NICE IRID; WELL MATCHED)** ___82. N G&C 7 pc. Water Set – Purple (scarce; nice)
 ___58. N Singing Birds 7 pc. Water Set – Green (very scarce; nice color & well matched) ___83. N G&C 7 pc. Water Set – Dk. Mari. (scarce w/ excellent color & irid.)
 ___59. N Singing Birds 7 pc. Water Set – Dk. Mari. (really nice dark color) ___84. N Grape and Gothic Arches 7 pc. Water Set – Blue (scarce & desirable set)
 ___60. **N SINGING BIRDS HANDLED MUG – AQUA OPAL. (RARE & DESIRABLE; A REALLY NICE PASTEL EXAMPLE)** ___85. **8 ¾” N EMBROIDERED MUMS 8 RUFFLED BOWL W/ RIBBED EXT. – ELEC BLUE (ABSOLUTELY SUPER COLOR & IRID. – FANTASTIC)**
 ___61. **N SINGING BIRDS HANDLED MUG – ICE BLUE (RARE & DESIRABLE; TOUGH COLOR TO FIND)** ___86. **9” N THREE FRUITS STIPPLED PLATE W/ RIBBED EXT. – AQUA OPAL. (RARE & VERY DESIRABLE; PASTEL W/ GREAT IRID.)**
 ___62. **N SINGING BIRDS HANDLED MUG – WHITE (ANOTHER RARE ITEM W/ EXCELLENT IRID.)** ___87. **8 7/8” N THREE FRUITS STIPPLED 8 RUFFLED BOWL W/ RIBBED EXT. – AQUA OPAL. (ANOTHER RARE & DESIRABLE ITEM THAT HAS EXCELLENT IRID.)**
 ___63. **N SINGING BIRDS HANDLED MUG – SAPPHIRE (VERY RARE COLOR; BASE COLOR IS GREAT)** ___88. **N THREE FRUITS MEDALLION SPATULA FTD. 8 RUFFLED BOWL W/ MEANDER EXT. – AQUA OPAL. (SUPER COLOR & IRID.)**
 ___64. **N SINGING BIRDS HANDLED MUG – HOREHOUND (RARE BASE COLOR; NICE)** ___89. **8 ¾” N Three Fruits Stippled 8 Ruffled Bowl w/ Ribbed Ext. – Dk. Mari. (super example)**
 ___65. N Singing Birds Handled Mug – Green (great irid.; above average irid.) ___90. **13 ½” TALL X 8 ½” TOP DIAM. X 5 ¼” BASE N TREE TRUNK SQUATTY ELEPHANTS FOOT SWUNG VASE – PURPLE (VERY RARE & VERY DESIRABLE; SUPER SATINY FINISH – MASSIVE ITEM)**

- ___ 91. 18" TALL X 7 3/4" TOP DIAM. X 5 1/4" BASE N TREE TRUNK SWUNG FUNERAL VASE – PURPLE (RARE AND VERY DESIRABLE; HAS EXCELLENT COLOR & IRID.)
- ___ 92. 17 1/2" TALL N THIN RIB MID-SIZE TALL SWUNG VASE – BLUE/ ELEC. BLUE (THIS IS ONE OF THE COOLEST VASES; SUPER TALL)
- ___ 93. N ORIENTAL POPPY 7 PC. TANKARD WATER SET – PURPLE (EXCELLENT IRID.; TUMBLERS ARE SUPER)
- ___ 94. N ACORN BURRS 7 PC. WATER SET – PURPLE (EXCELLENT IRID.; WELL MATCHED & NICE)
- ___ 95. N WIDE PANEL 4 LILY EPERGNE – WHITE (RARE & VERY DESIRABLE; HAS DAMAGE BY ONE INSERT)
- ___ 96. N WIDE PANEL 4 LILY EPERGNE – GREEN (RARE & DESIRABLE; NICE COLOR)
- ___ 97. N PEACOCK AT THE FOUNTAIN 7 PC. WATER SET – PURPLE (ACTUALLY A VERY TOUGH SET TO FIND; NICE)
- ___ 98. N Peacock at the Fountain 7 pc. Water Set – Dk. Mari. (actually one of the better sets I've seen)
- ___ 99. N Peacock at the Fountain Tumbler – Blue (super irid.; nice)
- ___ 100. N GOOD LUCK 8 RUFFLED BOWL W/ RIBBED EXT. – ICE BLUE OPAL. (RARE & VERY DESIRABLE; PASTEL AND SUPER)
- ___ 101. N GOOD LUCK 8 RUFFLED BOWL W/ RIBBED EXT. – SAPPHIRE (RARE & VERY DESIRABLE; SUPER BASE COLOR & NICE)
- ___ 102. N GOOD LUCK 8 RUFFLED BOWL W/ RIBBED EXT. – AQUA OPAL. (PASTEL & VERY DESIRABLE; SUPER IRID.)
- ___ 103. N GOOD LUCK 8 RUFFLED BOWL W/ RIBBED EXT. – PASTEL MARI. (ABSOLUTELY SUPER PINK & BLUE HIGHLIGHTS)
- ___ 104. N Good Luck 8 Ruffled Bowl w/ Ribbed Ext. – Pastel Purple (sorta wants to be lavender; super irid.)
- ___ 105. N GOOD LUCK 8 RUFFLED BOWL W/ BASKETWEAVE EXT. – HOREHOUND (RARE BASE COLOR W/ EXCELLENT IRID.; NICE ITEM)
- ___ 106. N GOOD LUCK STIPPLED BOWL W/ P.C.E. AND RIBBED EXT. – RENNIGER BLUE (HAS NARROW BASE; NON-IRIDIZED EXT.; VERY DESIRABLE; HAS A SLAG EFFECT)
- ___ 107. N Good Luck Bowl w/ P.C.E. and Ribbed Ext. – Elec. Blue (super example w/ excellent blue highlights)
- ___ 108. N GOOD LUCK BOWL W/ P.C.E. AND RIBBED EXT. – LAVENDER OR LT. AMETHYST (SCARCE AND UNUSUAL BASE COLOR)
- ___ 109. N Good Luck Bowl w/ P.C.E. and Ribbed Ext. – Pastel Mari. (scarce; really nice irid.)
- ___ 110. N Good Luck Bowl w/ P.C.E. and Ribbed Ext. – Dk. Mari. (super dark color)
- ___ 111. N Good Luck Bowl w/ P.C.E. and Basketweave Ext. – Green (nice satiny finish)
- ___ 112. N Good Luck Bowl w/ P.C.E. and Basketweave Ext. – Amethyst (nice satiny finish)
- ___ 113. N Good Luck Bowl w/ P.C.E. and Basketweave Ext. – Mari. (another nice example)
- ___ 114. (2)(Maker?) Plain Candlesticks – (1) Mari. (1) Lt. Mari. (odd pair)
- ___ 115. CAMBRIDGE INVERTED STRAWBERRY SPITTOON – GREEN (RARE & VERY DESIRABLE; EXCELLENT COLOR & IRID.)
- ___ 116. CAMBRIDGE INVERTED STRAWBERRY SPITTOON – DK. MARI. (ANOTHER EXCELLENT EXAMPLE; NICE)
- ___ 117. Cambridge Near Cut Cologne Bottle & Stopper – Green (rare item w/ great color & irid.)
- ___ 118. CAMBRIDGE BUZZ SAW SMALL-SIZE CRUET & STOPPER – GREEN (RARE & ALWAYS DESIRABLE; GREAT IRID.)
- ___ 119. HEISEY MELLON RIB SPITTOON – CRANBERRY FLASH (RARE; UNUSUAL)
- ___ 120. DUGAN MANY FRUITS 8 PC. RUFFLED PUNCH SET – PURPLE (REALLY NICE EXAMPLE W/ BLUE HIGHLIGHTS)
- ___ 121. Dugan Many Fruits 10 pc. Ruffled Punch Set – Dk. Mari. (excellent irid.; great looking top)
- ___ 122. 8 1/2" TALL DUGAN CIRCLE SCROLL SWUNG VASE – PURPLE (RARE; SUPER EXAMPLE W/ GREAT IRID.)
- ___ 123. 8 3/4" Dugan Round Up I.C. Shaped Flared Plate – Blue (very scarce; satiny finish)
- ___ 123a. 8 3/4" Dugan Apple Blossom Twig Flat Plate – Blue (flat w/ a mirror finish)
- ___ 124. 10 1/2" Dugan Victorian Lg. 6 Ruffled Bowl – Purple (satiny & desirable)
- ___ 125. DUGAN FARMYARD LG. SQUARE RUFFLED BOWL – AMETHYST (VERY RARE & EXTREMELY DESIRABLE; GREAT COLOR, SHAPE, AND DETAIL)
- ___ 125a. 10 1/2" Dugan Lg. 8 Ruffled Bowl w/ Rayed Int. and J.H. Ext. – Purple (a beauty!)
- ___ 126. DUGAN MINIATURE BEAUTY BUD VASE W/ J.I.P. CRIMPED EDGE – PURPLE (RARE SHAPE; SUPER IRID.)
- ___ 127. DUGAN MINIATURE BEAUTY BUD VASE W/ CRIMPED EDGE – PURPLE (ANOTHER RARE SHAPE; SUPER)
- ___ 128. DUGAN MINIATURE BEAUTY BUD VASE W/ TRI-CORNERED TOP – PURPLE (REALLY NICE EXAMPLE; GREAT COLOR & IRID.)
- ___ 129. Dugan Peacock at the Fountain 6 pc. Water Set – Blue (scarce & desirable set)
- ___ 130. DUGAN FISHERMAN'S HANDLED MUG – P. OPAL. (RARE & VERY DESIRABLE; GREAT COLOR; OPAL ON EDGE)
- ___ 131. Dugan Fisherman's Handled Mug – Dk. Mari. (scarce; really nice irid.)
- ___ 132. Dugan Fisherman's Handled Mug – Lt. Amethyst (scarce light base color; nice; desirable)
- ___ 133. Dugan Heron Handled Mug – Purple (rare w/ super color & detail)
- ___ 134. Dugan Beaded Shell Handled Mug – Mari. (scarce color; satiny finish)
- ___ 135. Dugan Beaded Shell Handled Mug – Blue (nice color; scarce)

- ___ 136. Dugan Beaded Shell Handled Mug – Amethyst (nice color)
- ___ 137. Dugan Beaded Shell Handled Mug – Oxblood (nice color)
- ___ 138. Dugan Stork in the Rushes Handled Mug – Blue Opal. (scarce; odd item)
- ___ 139. (2) Dugan Stork in the Rushes Handled Mugs – (1) Amethyst (1) Mari. (selling 2 for 1)
- ___ 140. **9 3/4" TALL X 7 3/4" TOP DIAM. X 4 1/2" BASE EUROPEAN "CIRCLE & BAR" LG. FLARED VASE – MARI. (RARE & VERY UNUSUAL; 1ST I'VE SOLD; NICE)**
- ___ 141. 19" Tall x 5 3/4" Top Diam. x 5" Base Dugan(?) Thin Rib Swung Vase – Mari./ Clear (scarce size)
- ___ 142. **9 1/2" DUGAN CHERRIES 8 RUFFLED BOWL W/ J.H. EXT. – PURPLE (SUPER DESIRABLE AND SUPER IRID.; NICE)**
- ___ 143. Westmoreland Corinth J.I.P. Vase – Mari./ Milk Glass (scarce; nice irid.)
- ___ 144. Pair Consolidated (?) Abalone Shell Shaped Shades w/o Sconces – Irid. Milk Glass (signed "Couneaut" & "Pat. Pend"; rare and unusual)
- ___ 145. **N IVY TOWN PUMP NOVELTY VASE – PURPLE (RARE & ALWAYS DESIRABLE; NICE IRID.; PERFECT)**
- ___ 145A. **10" TALL N TREE TRUNK STANDARD SWUNG VASE – AQUA OPAL. (NICE BUTTERSCOTCH OVERLAY; NICE OPAL)**
- ___ 146. **N TORNADO SMALL-SIZE TRI-CORNERED VASE – GREEN (SUPER EXAMPLE; GREAT COLOR & IRID.)**
- ___ 147. **N TORNADO SMALL-SIZE TRI-CORNERED VASE – PURPLE (RARE & DESIRABLE; NICE COLOR & IRID.)**
- ___ 148. **N TORNADO SMALL-SIZE TRI-CORNERED VASE – DK. MARI. (REALLY NICE COLOR; VERY DESIRABLE)**
- ___ 148a. N Daisy and Drape ftd. Flared Vase – Blue (very desirable; nice)
- ___ 149. 9 1/4" N G&C Variant "VERY" Flat Plate w/ Basketweave Ext. – Green (super example)
- ___ 150. **IMPERIAL 474 ROUND PUNCH BOWL AND BASE – PURPLE (RARE & VERY DESIRABLE; VERY TOUGH TO FIND)**
- ___ 151. Imperial 474 Handled Punch Cup – Purple (tough to find; nice blue highlights)
- ___ 152. Imperial 474 8 pc. Round Punch Set – Dk. Mari. (super dark color; really nice)
- ___ 153. 5 1/2" Tall x 4" Diam. Imperial Miniature Morning Glory and Drape Swung Vase – Mari. (average irid.)
- ___ 154. 6" Tall Imperial Miniature Morning Glory odd Swung Vase – Mari. (odd shape; neat)
- ___ 155. **16" TALL X 8 3/8" DIAM. X 5" BASE IMPERIAL MORNING GLORY SWUNG FUNERAL VASE W/ SNOWFLAKE UNDER BASE – PURPLE (RARE; DESIRABLE; SUPER COLOR & SHAPE)**
- ___ 156. **13" TALL X 9 5/8" DIAM. X 4 7/8" BASE IMPERIAL MORNING GLORY SWUNG FUNERAL VASE W/ SNOWFLAKE UNDER BASE – PURPLE (GREAT EXAMPLE; GREAT COLOR & IRID.)**
- ___ 157. **16 1/4" TALL X 8 1/4" DIAM. X 4 7/8" BASE IMPERIAL MORNING GLORY SWUNG FUNERAL VASE – AMBER (EXTREMELY RARE BASE COLOR; GREAT IRID.)**
- ___ 158. **17 1/4" TALL X 7 3/8" DIAM. X 4 7/8" BASE IMPERIAL MORNING GLORY SWUNG FUNERAL VASE – SMOKE (ANOTHER VERY RARE BASE COLOR; REALLY TOUGH)**
- ___ 159. 18 1/4" Tall x 6 3/4" Diam. x 4 7/8" Base Imperial Morning Glory Swung Funeral Vase – Green (very desirable; nice color and irid.)
- ___ 160. 14 3/4" Tall x 6 1/2" Diam. x 4 7/8" Base Imperial Morning Glory Squatty Swung Funeral Vase – Dk. Mari. (super color w/ great irid.; really nice)
- ___ 161. **IMPERIAL HEAVY GRAPE 8 PC. FLARED PUNCH SET – DK. MARI. (EXTREMELY RARE SET; SUPER IRID.)**
- ___ 162. **11 1/4" IMPERIAL HEAVY GRAPE CHOP PLATE – PURPLE (RARE W/ GREAT COLOR & IRID.)**
- ___ 163. **11 3/8" IMPERIAL HEAVY GRAPE CHOP PLATE – AMBER (SUPER EXAMPLE; GREAT COLOR & IRID.)**
- ___ 164. 11 1/4" Imperial Heavy Grape Chop Plate – Light Green (odd tint; odd light irid.)
- ___ 165. 11 5/8" Imperial Heavy Grape Chop Plate – Dk. Mari. (super color & irid.; really bright)
- ___ 166. 11 3/8" Imperial Heave Grape Chop Plate – Dk. Mari. (unusual satiny finish; really tough)
- ___ 167. Imperial Grape Water Carafe – Purple (great color and irid.)
- ___ 168. 7 1/2" Tall Imperial Propeller Lg. Flared Stemmed ftd. Vase – Mari. (rare shape; nice)
- ___ 169. 11" Tall Imperial Beaded Bullseye odd Shaped Swung Vase – Dk. Mari. (has a sorta tri-oval shape; nice)
- ___ 170. **IMPERIAL FLUTE TOOTHPICK HOLDER – MARI./ VASELINE (RARE & VERY DESIRABLE; GETTING TOUGH TO FIND)**
- ___ 171. Imperial Flute Toothpick Holder – Lime Green (scarce color)
- ___ 172. Imperial Flute Toothpick Holder – Odd Green (odd base color)
- ___ 173. **IMPERIAL FLUTE TOOTHPICK HOLDER – LAVENDER (EXTREMELY RARE & VERY DESIRABLE; NICE)**
- ___ 174. Imperial Flute Toothpick Holder – Purple (nice color & irid.)
- ___ 175. (2) Imperial Flute Toothpick Holders – Mari. (selling so much each for pair)
- ___ 176. Imperial Broken Arches 8 pc. Ruffled Punch Set – Mari. (rare w/ the ruffle; nice color)
- ___ 177. DeVilbiss "Beehive" Atomizer w/ Original label – Mari. ("DeVilbiss – 0054 – Made in U.S.A.")
- ___ 178. **WESTMORELAND CRUCIFIX CANDLESTICK – LT. MARI./ MILK GLASS (LIGHT MARIGOLD FINISH; VERY RARE & NICE)**
- ___ 179. 8 1/8" Imperial Interior Wide Panel Deep Round Bowl – Mari./ Milk Glass (dark color; super example)
- ___ 180. **5 1/4" TALL X 4 3/4" DIAM. X 2 1/2" BASE IMPERIAL INTERIOR WIDE PANEL MINI-VASE – DK. MARI./ MILK GLASS (SUPER COLOR & IRID.; GREAT COLOR)**
- ___ 181. 9" Tall x 6" Diam. x 3 1/2" Base Imperial Interior Panels Swung Vase – Mari./ Milk Glass (nice example; nice irid.)
- ___ 182. 4 3/4" Tall x 5 3/8" Diam. x 2 1/2" Base Imperial Stretch Interior Panels Squatty Flared Mini-Vase – White (great shape; super frosty & nice)

- ___ 183. 7 1/8" Tall x 6 1/2" Diam. x 3 1/2" Base Imperial Stretch Interior Panels Swung Vase – White (scarce; nice irid.)
- ___ 184. 10" Tall x 8 1/2" Diam. x 4 1/2" Base Imperial Stretch Interior Panels Squatty Swung Vase – White (scarce; nice irid.; nice size)
- ___ 185. **8 1/2" TALL X 9 1/2" TOP DIAM. X 4 1/2" BASE SIGNED IMPERIAL IRON CROSS SQUATTY FLAT TOPPED MID-SIZE VASE – TOMATO RED/ FLAME (NON-IRIDIZED MONSTER OF A VASE; GREAT COLOR & RARE)**
- ___ 186. **12 1/2" TALL X 10 1/2" DIAM. X 5 3/8" BASE IMPERIAL INTERIOR PANELS SQUATTY FLARED FUNERAL VASE – PASTEL MARI. (GREAT SIZE & IRID.)**
- ___ 187. 6" Tall x 10 1/2" Diam. x 5 3/8" Base Imperial Interior Panels Squatty Flared Jardinière Vase – Pastel Mari. (scarce & unusual size; nice irid.)
- ___ 188. 18 1/2" Tall x 8 1/4" Diam. x 5 3/8" Base Imperial Interior Panels Swung Funeral Vase – Pastel Mari. (great size; nice irid.)
- ___ 189. 13 3/4" Tall x 7 3/4" Diam. x 4 1/2" Base Imperial Interior Panels Swung Vase – Pastel Mari. (nice irid.)
- ___ 190. 4 1/2" Tall x 7 3/8" Diam. x 3 1/2" Base Imperial Interior Panels Squatty Flared Vase – Pastel Mari. (nice size and irid.)
- ___ 191. 5 1/2" Tall x 7" Diam. x 3 1/2" Base Imperial Interior Panels Squatty Flared Vase – Pastel Mari. (nice size)
- ___ 192. 11 3/4" Tall x 5 5/8" Diam. x 3 1/2" Base Imperial Interior Panels Swung Vase – Pastel Mari. (nice irid.)
- ___ 193. 7 1/2" Tall x 6 1/2" Diam. x 3 1/2" Base Imperial Interior Panels Swung Vase – Pastel Mari. (nice irid.)
- ___ 194. 4 1/2" Tall x 4 1/4" Diam. x 2 1/2" Base Imperial Interior Panels Miniature 8 Ruffled Swung Vase – Dk. Mari. (great color)
- ___ 195. **6 3/4" TALL X 7 1/4" DIAM. X 3 1/2" BASE IMPERIAL STRETCH SQUATTY FLARED VASE – SMOKE/ CRACKLED ICE (SUPER EXAMPLE W. GREAT STRETCH EFFECT – WOW!)**
- ___ 196. **4 5/8" TALL X 4 1/2" DIAM. X 2 1/2" BASE IMPERIAL STRETCH INTERIOR PANELS SQUATTY FLARED VASE – TEAL (NICE SIZE; VERY DESIRABLE; GREAT COLOR)**
- ___ 197. 7 3/4" Tall x 6" Diam. x 3 1/2" Base Imperial Stretch Interior Panels Swung Vase – Teal (nice example)
- ___ 198. 12" Tall x 5" Diam. x 3 1/2" Base Imperial Stretch Interior Panels Swung Vase – Teal (nice color & irid.; desirable)
- ___ 199. 3 3/4" Tall x 5 1/4" Diam. x 2 1/2" Base Imperial Interior Panels Squatty Flared Vase – Pastel Mari. (nice irid.)
- ___ 200. 5 1/8" Tall x 4 3/4" Diam. x 2 1/2" Base Imperial Interior Panels Squatty Flared Vase – Pastel Mari. (nice irid.)
- ___ 201. 11 1/2" Tall x 4 5/8" Diam. x 3 1/2" Base Imperial Interior Panels Swung Vase – Smoke (really nice irid.; desirable)
- ___ 202. **8 1/2" TALL X 5 5/8" DIAM. X 3 1/2" BASE IMPERIAL INTERIOR PANELS SWUNG VASE – DK. SMOKE (SUPER COLOR W/ GREAT IRID.; NICE)**
- ___ 203. 13 1/4" Tall x 7 1/4" Diam. x 4 3/8" Base Imperial Lg. Swung Vase – Ebony w/ Acid Overlay Décor. (really odd overlay; very different)
- ___ 204. 4 1/4" x 6" Imperial Interior Panels 9 Ruffled Rose Bowl – Dk. Mari. (nice example)
- ___ 205. **CONSOLIDATED HYACINTH GONE WITH THE WIND LAMP – MARI. (VERY RARE AND EXTREMELY DESIRABLE; SUPER IRID.)**
- ___ 206. Inwald Glass Company Double Diamond Cologne Bottle & Stopper – Dk. Mari. (very scarce; super irid.)
- ___ 207. Inwald Glass Company Double Diamond Ring Tree – Dk. Mari. (very scarce; super irid.)
- ___ 208. Inwald Glass Company Double Diamond Oval Pin Tray – Dk. Mari. (scarce; super irid.)
- ___ 209. Inwald Glass Company Double Diamond Covered Dresser Jar – Dk. Mari. (really dark; super item)
- ___ 210. **13" TALL X 9" DIAM. X 4 7/8" BASE IMPERIAL RIPPLE SQUATTY FUNERAL VASE – PURPLE (RARE; GREAT COLOR & SIZE; VERY DESIRABLE)**
- ___ 211. 10 3/4" Tall Imperial Ripple Standard Swung Vase – Violet Blue (scarce base color: dark finish)
- ___ 212. 15 3/4" Tall x 8 3/4" Diam. x 4 5/8" Base Imperial Ripple Swung Funeral Vase – Amber (rare; great color & irid.; very desirable)
- ___ 213. 11 3/4" Tall x 2 7/8" Base Imperial Ripple Standard Swung Vase – Amber (scarce; nice color)
- ___ 214. 9" Tall x 2 7/8" Base Imperial Ripple Standard Swung Vase – Amber (scarce; nice color)
- ___ 215. **18 3/4" TALL X 5 1/2" DIAM. X 4 5/8" BASE IMPERIAL RIPPLE SWUNG FUNERAL VASE – CRYSTAL (REALLY UNUSUAL; HAVEN'T SEEN MANY)**
- ___ 216. 19" Tall x 6" Diam. x 4 5/8" Base Imperial Ripple Swung Funeral Vase – Green (great size and color; really nice)
- ___ 217. 14 1/2" Tall x 5 1/2" Diam. x 3 7/8" Base Imperial Ripple Mid-Size Swung Vase – Odd Green (teal tint; sorta aqua; open bubble filled)
- ___ 218. **11 3/4" TALL X 6 1/2" DIAM. X 4 5/8" BASE IMPERIAL RIPPLE SQUATTY SWUNG FUNERAL VASE – DK. MARI. (SUPER COLOR; REALLY DESIRABLE SIZE)**
- ___ 219. **17 3/4" TALL X 6 5/8" DIAM. X 4 5/8" BASE IMPERIAL SWUNG FUNERAL VASE – MARI. (RARE COLOR & REALLY DESIRABLE)**
- ___ 220. **(1) 13 1/2" AND (1) 14" IMPERIAL SQUATTY FLARED FUNERAL VASES – MARI. (GREAT PAIR; SELLING SO MUCH EACH FOR THE TWO)**
- ___ 221. 16 1/2" Tall x 3 7/8" Base Imperial Ripple Mid-Size Swung Vase – Mari. (nice color & irid.)
- ___ 222. 5" Tall Imperial Ripple Mini Swung Vase – Mari. (cute; nice color)
- ___ 223. 10 1/2" Tall x 2 1/2" Base Imperial Ripple Swung Vase – Mari. (nice color)
- ___ 224. **6 1/2" TALL SIGNED IMPERIAL NUART TURNED-IN VASE – CUSTARD (IVORY)/ MARI. (SIGNED NUART ON EDGE OF BASE; EXTREMELY DESIRABLE)**
- ___ 225. **IMPERIAL THUMBPRINT AND OVALS 6 RUFFLED VASE – PURPLE (SUPER EXAMPLE; REALLY, REALLY NICE)**
- ___ 226. Newer Fenton Kittens Handled Basket w/ Label – Aqua Opal (desirable, nice)
- ___ 227. **FENTON KITTENS CUP AND SAUCER – MARI. (VERY DESIRABLE; GREAT DETAIL)**

228.	Fenton Kittens 2 Sided Banana Dish – Mari. (scarce; nice)	251.	17" TALL X 7 5/8" DIAM. X 5 1/8" BASE FENTON RUSTIC SWUNG FUNERAL VASE – GREEN (SUPER! A VERY ATTRACTIVE EXAMPLE)
229.	Fenton Kittens 4 Sided Bowl – Mari. (scarce; nice)		
230.	FENTON KITTENS 4 RUFFLED TOOTHPICK HOLDER – BLUE (VERY DESIRABLE; TOUGH TO FIND)	252.	16 7/8" TALL X 7" DIAM. X 5 1/8" BASE FENTON RUSTIC SWUNG FUNERAL VASE – AMETHYST (ANOTHER SUPER EXAMPLE; GREAT COLOR)
231.	FENTON KITTENS 4 RUFFLED TOOTHPICK HOLDER – WHITE/ CRYSTAL (VERY ODD ITEM; IRIDIZED ON RIM)	253.	19" Tall x 7 3/8" Diam. x 5 1/4" Base Fenton Rustic Swung Funeral Vase – Blue (very scarce & desirable; really nice)
232.	Fenton Kittens 4 Sided Toothpick Holder – Mari. (scarce; almost square)	254.	17" TALL X 7 1/4" DIAM. X 5" BASE FENTON RUSTIC SWUNG FUNERAL VASE – PASTEL MARI. (SUPER IRID.; GREAT EXAMPLE & NICE)
233.	Newer Fenton Tri-Cornered Toothpick Holder – Purple (stretch effect; nice)	255.	21 3/8" TALL X 8" DIAM. X 5 1/4" BASE FENTON RUSTIC SWUNG FUNERAL VASE – HAS A POUR SPOUT – ROYAL BLUE (A SUPER RARE NON-IRIDIZED ITEM; VERY TOUGH TO FIND)
234.	Fenton Orange Tree Hatpin Holder – Blue (scarce; good feet)	256.	19" TALL X 7 1/2" DIAM. X 5 1/4" BASE FENTON RUSTIC SWUNG FUNERAL VASE – RUBY RED (ANOTHER RARE NON-IRIDIZED EXAMPLE; NICE)
235.	FENTON BUTTERFLY AND BERRY FTD. HATPIN HOLDER – JADE GREEN (EXTREMELY RARE NON-IRIDIZED ITEM; SUPER)	257.	17 3/4" TALL X 8" DIAM. X 5 1/8" BASE FENTON RUSTIC SWUNG FUNERAL VASE – CRYSTAL (NOT TOO MANY CRYSTAL EXAMPLES KNOWN; NICE)
236.	FENTON BUTTERFLY AND BERRY FTD. HATPIN HOLDER – MARI. (VERY RARE & VERY DESIRABLE; SUPER EXAMPLE)	258.	17" Tall x 4 1/8" Base Fenton Rustic Swung Mid-Size Funeral Vase – White (great size; frosty & really nice)
237.	FENTON BUTTERFLY AND BERRY FTD. J.I.P. VASE FROM HATPIN HOLDER – EBONY (RARE SHAPE; NICE ITEM; RARE!!)	259.	16 1/2" Tall x 4 1/8" Base Fenton Rustic Swung Mid-Size Funeral Vase – Blue (great size & nice color)
238.	9" TALL FENTON BUTTERFLY AND BERRY SWUNG VASE – RED SLAG (ANOTHER RARE ITEM; GREAT DARK COLOR)	260.	15 3/4" Tall x 4 1/8" Base Fenton Rustic Swung Mid-Size Funeral Vase – Amethyst (scarce; nice)
239.	7 3/8" Fenton Lions 6 Ruffled Bowl – Blue (very scarce; nice color & detail)	261.	12" TALL X 4 1/8" BASE FENTON RUSTIC MID-SIZE SWUNG VASE – GREEN (GREAT SHAPE & COLOR)
240.	8" FENTON "ILLINOIS SOLDIERS AND SAILORS HOME – QUINCY, ILL" FLAT PLATE – BLUE/ ELEC. BLUE (RARE & VERY DESIRABLE; HAS SUPER BLUE HIGHLIGHTS)	262.	11 1/4" Tall x 4 1/8" Base Fenton Rustic Mid-Size Swung Vase – Dk. Mari. (another great shape & color)
241.	Fenton Orange Tree Cup & Saucer – Saucer being a 6 1/2" Sailboats Plate w/ Orange Tree Ext. – Blue (Doug will explain this combination to you)	263.	15 5/8" Tall x 4 1/8" Base Fenton Rustic Mid-Size Swung Vase w/ T.C.E. – Blue (scarce; nice)
242.	8 1/8" FENTON G&C FLAT PLATE – MARI. (VERY RARE ITEM IN THIS COLOR; NOT MANY KNOWN)	264.	FENTON FLUFFY PEACOCK 7 PC. WATER SET – AMETHYST (RARE & DESIRABLE SET; NICE IRID.)
243.	9" FENTON CONCORD GRAPE FLARED PLATE – AMETHYST (RARE & VERY DESIRABLE; GREAT COLOR AND HIGHLIGHTS)	265.	FENTON HOLLY STEMMED 6 RUFFLED COMPOTE – RED (LOOKS RED; VERY DESIRABLE)
244.	8 1/2" FENTON CONCORD GRAPE 6 RUFFLED BOWL – GREEN (SUPER IRID. ALMOST EMERALD)	266.	FENTON ORANGE TREE HANDLED SHAVING MUG – RED SLAG (RARE ITEM W/ SLAG EFFECT; NICE)
245.	9" FENTON PEACOCK AT THE URN 8 RUFFLED BOWL – ELEC. BLUE (ABSOLUTELY SUPER EXAMPLE; FANTASTIC)	267.	FENTON ORANGE TREE HANDLED SHAVING MUG – AMBER (SCARCE; TOUGH BASE COLOR; NICE)
246.	9 5/8" Fenton Peacock at the Urn Flat Plate – Blue (5/16" flake on back; but still a real Beaut!)	268.	Fenton Orange Tree Handled Shaving Mug – Blue (nice color)
247.	9 1/4" Fenton Peacock at the Urn Flat Plate – Dk. Mari. (nice dark satiny finish; great color)	269.	Fenton Orange Tree Standard Flared Mug – Amber (scarce color)
248.	12" FENTON STAG AND HOLLY BALL FTD. CHOP PLATE – DK. MARI. (ABSOLUTELY SUPER EXAMPLE W/ GREAT IRID.)	270.	Fenton Orange Tree Standard Flared Mug – Blue (nice color)
249.	FENTON ORANGE TREE FTD. RUFFLED FRUIT BOWL – GREEN (RARE BASE COLOR; NICE SATINY EXAMPLE)	271.	FULL PINT GOLDEN WEDDING BOTTLE, LABEL, CONTENTS AND ORIGINAL BOX – MARI. (SUPER SET W/ ORIGINAL BOX, ETC.)
250.	4 1/2" TALL X 6 1/2" DIAM. X 3 7/8" FENTON RUSTIC HOBNAIL JARDINIÈRE WHIMSEY – AMETHYST (AS THE OTHERS ARE KNOWN, THEY ALL HAVE A HAIRLINE)	272.	1/10 Pint Golden Wedding Mini-Bottle w/ Label and Contents – Mari. (has screw top)
		273.	1/10 Pint Golden Wedding Mini-Bottle w/ Cork Top – Mari.
		274.	1/2 Pint Golden Wedding Bottle w/ Aluminum Shot Glass – Mari. (scarce shot glass)
		275.	Westmoreland Paneled Chalice w/o the Lid – Gray Flash (needs lid)

DONALD DORAIS
150 HIGHLAND AVENUE
CUMBERLAND, RI 02864

PROVIDENCE RI 028
SEP 2016 PH 3 L
BURNS
AUCTION SERVICE



Visit www.necga.com for pictures and brochure, Click on carnival glass links page, Look for Burns Auction. Auction Flex Available for this auction. Check us out on Auction Zip ID #29661.

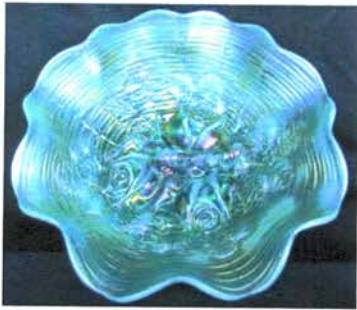


Lee Markley
Box 306
Mentone, IN 46539

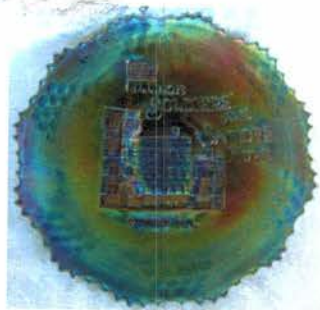
Lot #250

CARNIVAL GLASS AUCTION SATURDAY, OCTOBER 22nd AT 10:00 A.M.

46539#0306 B004



Lot #30



Lot #240



Lot #243



Lot #100



Lot #87



Lot #15



Lot #20



Lot #103



Lot #126



Lot #235



Lot #122



Lot #236



Lot #127