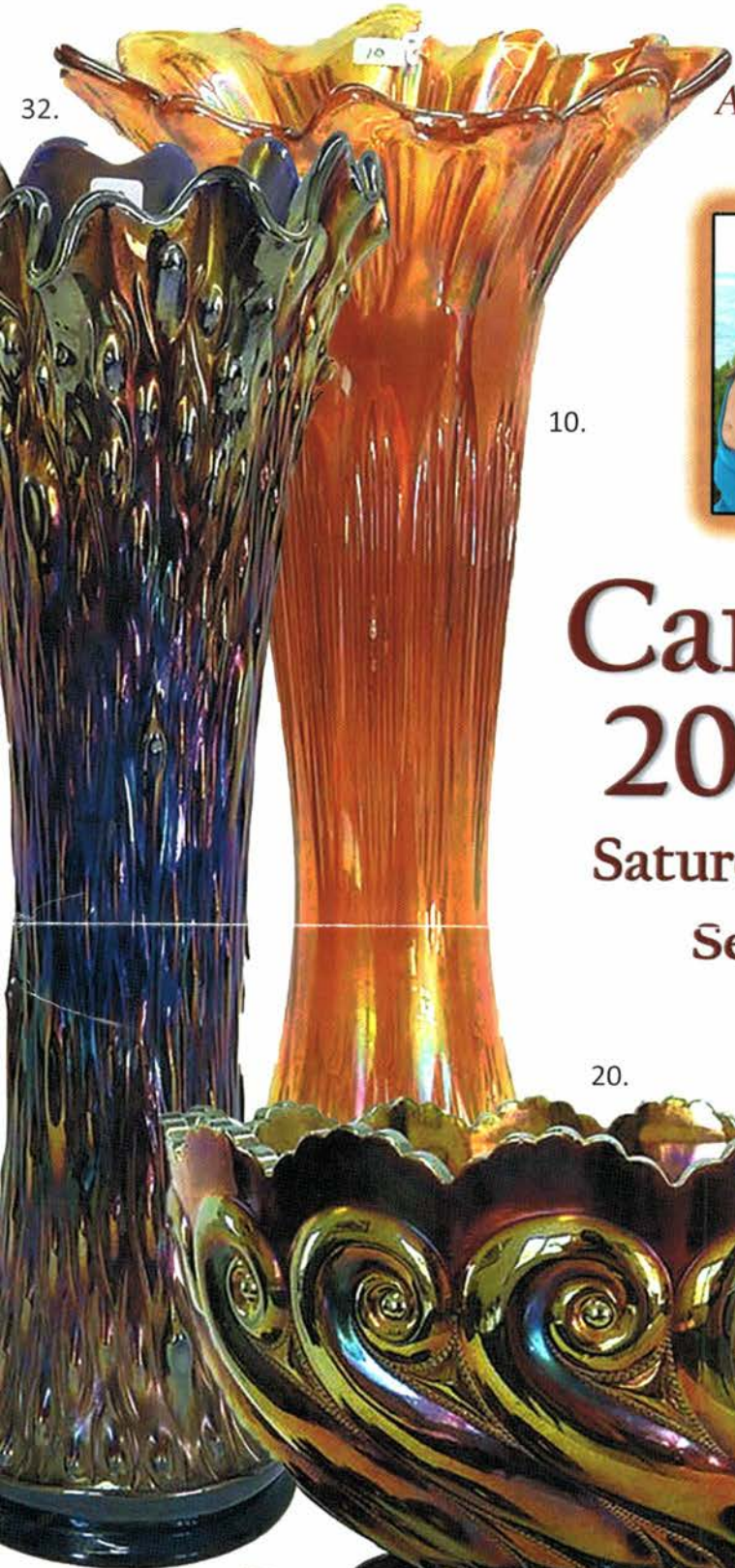


The
Allan & Karen Rath
Collection



10.

96.

25.

Carnival Glass 2016 Auction

Saturday, Sept. 24 9:30 a.m.

Senior Activity Center

326 4th St. NE

Mason City, Iowa

20.

17.



Seeck Auctions
Jim & Jan Seeck
641-424-1116

54.



SATURDAY, SEPTEMBER 24, 2016 — 9:30 A.M.

Jim & Jan Seeck

Senior Activity Center – 326 Fourth St. NE
Mason City, Iowa 50401

641-424-1116

(From South: Take US Hwy 65 into Mason City and turn right or East on 4th ST NE, go 2 blocks)
(From North: Take US Hwy 65 into Mason City and turn left or East on 4th ST NE, go 4 blocks)

(This is the brown building on the West end of the block)

★ Preview: Friday Sept. 23, 3 pm – 6 pm

★ Online absentee bidding closes, Friday, Sept. 23 at 9 pm CST

ABSENTEE BIDDING is available on-line through Auction Flex using our online catalog at www.seeckauction.com

NO BUYER'S PREMIUM -- EMAIL: jimjan@seeckauction.com

Featuring the Karen and Allan Rath Collection

Seeck Auctions is pleased to be selling the Karen and Allan Rath collection of Carnival Glass.

The Raths are from Canada and have been collecting for quite some time. The auction includes many fantastic vases, which was Allan's favorites, and many exciting hatpins, which was Karen's favorites.

Overall, just a great sale full of wonderful pieces for everyone!

LODGING

Mason City: Holiday Inn Express – (641) 424-1200; Quality Inn – (641)423-4444;

Country Inn & Suites – (641) 423-1770; Super 8 – (641) 423-8855; Historic Park Inn Hotel – (641) 422-0015

Clear Lake: AmericInn – (641) 357-8954; Best Western Holiday Lodge (641) 357-5253.

Terms: Cash or Check, VISA, MasterCard and Discover accepted w/proper ID. **4% Clerking Fee** on all purchases made using credit cards. Announcements made day of sale take precedence over any printed information.

We have 3 options for ABSENTEE BIDDING for our live auctions:

- WRITTEN OR PHONE:** If you **DO NOT** have internet access or access to our website, you can: Call us by phone to enter your bids at (641) 424-1116 **OR** By sending the numbers of the item(s) desired and the amount bid on each to: Seeck Auctions, PO Box 377, Mason City, Iowa 50402. (The mail has not been very dependable. We would prefer you call us with your bids rather than send them in a letter.)
 - All written and called in bids will be entered into the online catalog by us.
 - Written and Phone Absentee Deadline:** Have all bids in by **Wednesday, Sept. 21.**
- ONLINE CATALOG:** Enter your bids from our website into our online catalog through the Auction Flex system. When you get to the online catalog, you will need to login as a bidder. For the first time you will need to **set up your account** by creating a user name and password. This will include filling out a form with your name, address, etc. You will also need to **register for the auction** which will ask you to enter a valid credit card number. This card will be validated by a \$1 charge to your card. This will only happen once and you will now be able to enter bids through our online catalog by just logging in with your user name and password. You will use this user name and password for all our auctions. You are not required to pay by credit card if you are successful. This is just a safeguard for us if someone does not pay. We will let you know what you owe us through an email and you can decide how you would like to pay us.
 - An exciting advantage of entering your bids online yourself, is the option to be notified by email if you are outbid on an item. You will know when you are outbid on an item and you can increase your bid on that item or bid on something else. **There will be a cutoff date and time for entering your bids online, generally at 9 p.m. the night before each live auction.** After this time has passed, you will not be able to enter your bids from our online catalog.
 - Remember, that just because you are the high bidder in the online catalog, this does not mean you have won the item. Your bid will still need to beat the floor bidders and live phone bidders. This system will run our absentee bids just as we did before. You will still be able to buy the item lower than your online bid unless someone on the floor bids you higher.
- LIVE PHONE BIDDING:** Available on pieces with an estimated sale price of \$500 or more. If you would like to participate in live phone bidding, contact us by **the Thursday before the auction, Sept. 22.** We will need to know the lot# and the phone number that you can be reached at on the day of the auction. We will also need your home phone number if different than the above number. Please call with questions: 641-424-1116.
 - There is a **\$7 handling charge for each successful bid. Shipping and insurance charges are additional.** bidders will be notified by phone/email if their bid(s) are successful. This will be done 1 - 3 days after the auction.
 - If you do not receive an item that sold for less than your bid, assume we cancelled your bid because the item had a severe manufacture problem, damage or was not listed correctly.**

BID INCREMENTS: \$1 - \$100/\$5	\$100 - \$200/\$10	\$200 - \$700/\$25	\$700 - \$1,500/\$50
\$1,500 - \$3,000/\$100	\$3,000 - \$5,000/\$250	\$5000+	Auctioneer's Discretion

1. Scroll Embossed miniature goblet shaped compote - purple - nice
2. Grape & Cable bonbon - blue - super pretty
3. Cosmos & Cane 10" ruffled bowl - white
4. Spiralex 12" vase - amethyst - super pretty, some may call this lavender
5. M'burg Holly Sprig 8" IC shaped bowl - marigold - radium & super!
6. Windmill 9" deep round bowl - smoke - pretty
7. Frosted Fish 10" vase - marigold - signed JAIN
8. Fish 9" vase - marigold - JAIN, this may be the serpent vase but this has two eyes?
9. Panji Peacock Eye 8" vase - marigold - JAIN
10. **Diamond Rib ruffled top 20" funeral vase - marigold - only one I have seen like this, super rare vase, very neat!**
11. Rekord 8" vase - blue - EDA, very rare & pretty
12. Three Fruits PCE bowl w/plain back - purple - super pretty
13. **Thistle 9" plate - marigold - very rare & nice**
14. **Thistle 9" plate - amethyst - another rare one, great opportunity**
15. Western Thistle 5" vase - blue - Riihimaki, neat vase, neat shape
16. Western Thistle 5" vase - marigold - Riihimaki, another pretty vase
17. **Chrysanthemum chop plate - purple - fantastic plate, a beautiful one, rare**
18. Beaded Bullseye 10" vase - purple - very pretty
19. Parlor Panels 8" vase - smoke - very pretty
20. **S-Repeat 14 pc. punch set - purple - extremely rare & highly desirable set, another rare opportunity!**
21. M'burg Hobnail Swirl 9" vase - marigold - a nice one, chip in interior of vase
22. **Banded Grape & Cable hatpin holder - blue - extremely rare color, very few around, has a chip on flat on one foot, still a great piece**
23. **Banded Grape & Cable hatpin holder - purple - super pretty & extremely rare when banded**
24. **Banded Grape & Cable hatpin holder - marigold - another rare banded example, super pretty, very minor polishing on bottom of feet**
25. **Bird of Paradise hatpin - dark - extremely rare hatpin! less than a handful known, plus it is super pretty, a top hatpin**
26. **Scarab Shell - amber - very rare color, small couple nicks around edge**
27. **Piazza hatpin - dark - scarce & pretty**
28. Flying Bat hatpin - dark - pretty
29. Diamond Sphere hatpin - dark
30. Grouping of 10 buttons - includes many rare buttons
31. **Tree Trunk 19" funeral vase - white - super iridescence, couple of bursts on edge base, a fabulous vase!**
32. **Tree Trunk 19" funeral vase - blue - very pretty & very rare, a dandy!**
33. Beaded Spears 7 pc water set - marigold - JAIN, manufacture grinding chips on top of pitcher, 2 small tumblers and 4 large tumblers
34. **Hattie chop plate - purple - extremely rare & nice!**
35. **Hattie chop plate - amber - super pretty iridescence on this rare plate**
36. Rose Garden 9" letter vase - blue - manufacture roughness on top edge, minor nick on side panel, crack in base, scarce, Brockwitz
37. Rose Garden 7 1/2" letter vase - blue - nice, scarce, Brockwitz
38. Rose Garden 5 1/4" vase - blue - Brockwitz, typical chipping around bottom where they polished
39. **Imperial Grape 7 pc. water set - smoke - a beautiful set, very scarce, one tumbler has minor burst on seam**
40. **Imperial Grape 7 pc. water set - purple - another beautiful set, hard to find**
41. M'burg Holly Sprig Variant 8" IC shaped bowl - marigold - radium, fantastic
42. Scroll Embossed 9" plate - purple - pretty
43. **Hearts & Flowers ruffled bowl w/ribbed back - aqua opal - has unusual radium iridescence, a very unique piece, very tiny open bubble on point**
44. Shell & Sand ruffled bowl - purple - pretty
45. Shell & Sand ruffled bowl - smoke - nice
46. **Diamond Rib 6 1/2" jardinière - green - a great piece! this is the funeral vase before they stretched it out, extremely hard to find, highly desirable, tiny nick on side of rib in pattern**
47. Heavy Vine tumble up or guest set - marigold - very scarce item
48. Heavy Vine 8" perfume bottle - marigold - scarce
49. Heavy Vine 6 3/4" perfume bottle - marigold - scarce
50. Heavy Vine atomizer - marigold - tiny pinpoint on point of base
51. Heavy Vine large size powder jar - marigold
52. Heavy Vine small size powder jar - marigold
53. Heavy Vine ring tree - marigold
54. **Rose Show Variant 9" plate - renninger blue - super pretty irid. on this very rare plate**
55. Grape & Cable PCE bowl w/BW back - green - nice
56. **M'burg Strawberry Wreath square shaped crimped edge compote - marigold - radium & super, extremely rare shape, neat piece**
57. Grape & Cable 8" handgrip plate - green
58. **Imperial Grape 6 pc. punch set - purple - scarce set, pretty**
59. Floral Sunburst 6 1/2" vase - marigold - EDA, has cupped in top, pretty
60. Floral Sunburst 6 1/2" vase - blue - EDA, has flared out top, also pretty
61. **Rose Show 9" plate - lime green - scarce color, heat check in base, pretty**
62. **Rose Show 9" plate - marigold - pretty pastel irid.**
63. Rose Show 9" plate - white
64. Curled Rib 8" JIP vase - smoke - very pretty
65. **Christmas compote - purple - super pretty & highly desirable, a Carnival classic, tiny pinpoint on edge, very small**
66. **Twin Gators hatpin - dark - has painted gators, extremely rare, not many known**
67. **Suns Up Rooster hatpin - dark - black paint background w/gold & red enameling**
68. Turban hatpin - dark

- ___ 69. Banded Flower hatpin - lavender
- ___ 70. Banded Flower hatpin - amber - if iridized, very lightly, still a rare hatpin
- ___ 71. Grouping of 13 buttons - Jumbo (elephant), Swan, Ram's head, Owls, etc.
- ___ 72. **Lotus & Grape 9" plate - amethyst - very pretty, small chip on one point**
- ___ 73. Diamond Point 7 pc. ice bucket set - marigold - unusual set
- ___ 74. **Holly ruffled bowl - blue opal - very pretty iridescence on a rare bowl!**
- ___ 75. **Holly ruffled bowl - marigold on moonstone - super nice & scarce**
- ___ 76. **Drapery 9" vase - sapphire - super pretty**
- ___ 77. Drapery 8" vase - ice green
- ___ 78. **Garden Path Variant chop plate - purple - super pretty & very rare, spot of epoxy on base**
- ___ 79. Elephant 9" vase - marigold - JAIN
- ___ 80. Elephant 7" vase - marigold - JAIN
- ___ 81. **Imperial Grape 10" lg ruffled bowl - blue - very rare blue Imperial, neat!**
- ___ 82. Imperial Grape 10" lg ruffled bowl - purple
- ___ 83. **M'burg Ohio Star vase - green - super pretty & highly desirable, a beauty**
- ___ 84. M'burg Seaweed 10" ruffled bowl - amethyst - satin, super pretty
- ___ 85. **Springtime 7 pc. water set - marigold - beautiful set, rare to find this nice**
- ___ 86. **Blackberry Spray ruffled hat - reverse amberina opal - very rare hat, pretty**
- ___ 87. Blackberry Spray ruffled hat - aqua opal - another rare color, a dandy
- ___ 88. Blackberry Spray ruffled hat - lime green opal - all three opals in one auction!
- ___ 89. Rosario 9" vase - marigold - scarce
- ___ 90. **Fashion ruffled compote - smoke - a very rare piece to find, pretty**
- ___ 91. Stippled Good Luck PCE bowl w/ribbed back - blue - nice
- ___ 92. **Shell & Sand 9" plate - purple - rare plate, desirable**
- ___ 93. **Shell 9" plate - smoke - pretty, scarce**
- ___ 94. Scroll Embossed lg size ruffled compote - purple - nice
- ___ 95. **Fenton's Good Luck / Heart & Horseshoe ruffled bowl - marigold - very rare & highly desirable, minor pinpoint on cleat of horseshoe**
- ___ 96. **Tree Trunk Elephant Foot 14" funeral vase - purple - super nice, very rare, always in demand**
- ___ 97. **True Scarab hatpin - dark - super rare & pretty**
- ___ 98. Sun's Up hatpin - lavender
- ___ 99. Scroll and Diamonds hatpin - frosty white
- ___ 100. Gazebo Variant hatpin - blue goofus - not Carnival
- ___ 101. Gazebo Variant hatpin - lavender goofus - not Carnival
- ___ 102. Grouping of 13 buttons - floral, one with butterfly
- ___ 103. **NUART Homestead chop plate - purple - super pretty, great mold work, very small chip on back edge**
- ___ 104. **Homestead chop plate - amber - small burst in base, couple of minor nicks on inner ridge of Greek key pattern**
- ___ 105. Stippled Grape & Cable humidior - blue - very rare color, polishing on inner rim of base under lid
- ___ 106. Stippled Grape & Cable humidior - marigold - very pretty, scarce
- ___ 107. Dugan's Vintage dome fid ruffled bowl - amethyst - nice
- ___ 108. **Vintage 7" ruffled bowl - aqua opal - rare bowl, very nice**
- ___ 109. **Nippon 9" plate w/BW back - green - very insignificant irid. burns on edge, super nice plate**
- ___ 110. Nippon 9" plate w/BW back - purple - spots of epoxy on base
- ___ 111. **Good Luck ruffled bowl w/ribbed back - aqua opal - super pretty butterscotch irid., rare**
- ___ 112. Good Luck ruffled bowl w/ribbed back - blue - electric & nice
- ___ 113. Good Luck ruffled bowl w/BW back - purple
- ___ 114. **Grape & Cable 12 pc. master punch set purple - very rare & nice, epoxied chip on point of bowl, one cup has chip on base**
- ___ 115. **Grape & Cable mid size 8 pc. punch set horehound - extremely rare, even the cups match, the base is marigold, some might call this lavender**
- ___ 116. **Grape & Cable 8 pc. punch set - marigold - pretty set**
- ___ 117. **Thumbprint & Ovals vase - purple - very scarce, pretty**
- ___ 118. **Thumbprint & Ovals vase - marigold - another pretty one**
- ___ 119. M'burg Strawberry Wreath 8" crimped edge ruffled bowl - amethyst - radium, nice
- ___ 120. Strawberry 9" plate w/BW back - green
- ___ 121. **Butterfly & Tulip square shape deep ruffled bowl - purple - very scarce, another Carnival Classic**
- ___ 122. **Enameled Aurora Pearls 12" bowl - opaque white - has butterflies & oak branches**
- ___ 123. **Heavy Grape 7" round bowl - blue - another rare Imperial blue piece, nice**
- ___ 124. **Tree Trunk mid size 14" vase w/plunger base - green - very hard to find with this plunger base**
- ___ 125. Chop plate 11" with thistle pattern - marigold
- ___ 126. **Imperial Flute water pitcher w/1 tumbler - purple - super pretty, scarce & desirable**
- ___ 127. **Flute #3 tumbler - blue - very rare & very few known, a nice one**
- ___ 128. Flute #3 tumbler - purple - matches tumbler with water pitcher
- ___ 129. Flute #2 tumbler - purple - nice
- ___ 130. Flute #1 tumbler - purple - very nice
- ___ 131. **Plume Panels 10" vase - red - super nice**
- ___ 132. Plume Panels 12 1/2" vase - blue
- ___ 133. Plume Panels 14 1/2" vase - amethyst - very tall for these, stretched out
- ___ 134. **Fancy Beetle hatpin - purple - rare & highly desirable**
- ___ 135. Strawberry hatpin - amber - scarce
- ___ 136. Strawberry hatpin - green - very scarce, has minor nick on side
- ___ 137. Bars & Beads hatpin - dark
- ___ 138. Oval Prisms hatpin - dark
- ___ 139. Grouping of 6 buttons - includes large & small pinecone, large pinecone has a cone shank and is the Turban hatpin
- ___ 140. **Cherry Chain chop plate - white - pretty irid.! and very rare**

- ___ 141. Blackberry Spray JIP CRE hat - red - super, a beautiful piece!
- ___ 142. Blackberry Spray JIP CRE hat - lime green - very pretty, hard to find this shape in this color
- ___ **143. Pair of enameled boudoir lamps with winter cottage scene - have not sold a pair of these before**
- ___ 144. Princeton 10" vase - marigold - Inwald, grinding nicks around base, one is fairly large
- ___ **145. Peacocks 9" plate w/ribbed back - blue - very pretty plate**
- ___ 146. Peacocks 9" plate w/ribbed back - purple - another nice one
- ___ 147. Peacocks 9" plate w/plain back - white - super example!
- ___ **148. Dandelion tankard water pitcher w/one tumbler - purple - this is the ribbed interior version, very nice!!**
- ___ 149. M'burg Nesting Swan ruffled bowl - marigold - radium & super, a gorgeous piece of glass
- ___ **150. Imperial Grape 9" plate - purple - super pretty, small shallow chip on side of collar base**
- ___ 151. Mystic Grape decanter with stopper - marigold - named by Karen, found in Brazil
- ___ 152. Star of David ruffled bowl - purple - pretty
- ___ **153. Good Luck 9" plate w/BW back - horehound - super nice plate, very scarce**
- ___ 154. Good Luck 9" plate w/BW back - purple - nice
- ___ **155. Frosted Fir Cones 12" vase - marigold - extremely rare, found by Karen in Brazil**
- ___ **156. Fir Cones 12 1/2" vase - marigold - rare, dark & pretty**
- ___ **157. N's Peacock at Urn master IC bowl - blue - very scarce, has electric highlights**
- ___ **158. N's Peacock at Urn master IC bowl - marigold - lots of yellow irid., has irid. streaks**
- ___ **159. Ripple 18" funeral vase - purple - super pretty, very rare, great vase**
- ___ **160. Ripple 11 1/2" squatty funeral vase - purple - funeral vase size, just not stretched out, great piece**
- ___ 161. Ripple 15 1/2" vase - purple - 3 7/8" base, nice vase
- ___ 162. Ripple 11 1/2" vase - purple - 3 7/8" base, nice
- ___ 163. Ripple 10 1/2" vase - purple - 2 7/8" base, pretty
- ___ 164. Ripple 11 1/2" vase - smoke - 2 7/8" base
- ___ 165. Ripple 6 1/2" vase - amber - 2 7/8" base, small nick on lowest rib, neat vase
- ___ **166. Peacocks ruffled bowl w/ribbed back - aqua opal - always in demand**
- ___ **167. Peacocks ruffled bowl w/ribbed back - horehound - very nice bowl**
- ___ 168. Peacocks ruffled bowl w/ribbed back - green - nice example
- ___ 169. Peacocks ruffled bowl w/ribbed back - blue - super nice
- ___ 170. Peacocks ruffled bowl w/ribbed back - purple - very pretty
- ___ **171. N's Corn vase w/stalk base - green - super nice, scarce**
- ___ 172. Lotus & Grape ftd 7" round bowl - aqua - rare color for these
- ___ **173. Luster Rose 7 pc. water set - purple - very pretty set**
- ___ 174. Column & Fan tumble up - marigold - rare tumbler up, can't say I've sold one before
- ___ 175. Ski Star lg size ruffled bowl - purple - very pretty example, from the Morgan collection
- ___ **176. Tree Trunk 11" mid size vase - horehound - rare color & nice**
- ___ 177. Tree Trunk 12" mid size vase - marigold - has pastel type irid., pretty
- ___ **178. Scroll Embossed ruffled bowl - emerald green - super pretty**
- ___ **179. Spider King hatpin - dark - very rare**
- ___ 180. Spider hatpin - ice green - small chip on edge, not iridized
- ___ 181. Spider hatpin - blue - small chip on edge, not iridized
- ___ 182. Stubby Beetle hatpin, has metal frame - iridized Loetz
- ___ 183. Pinwheel hatpin - dark
- ___ 184. Tufted Throw Pillow hatpin - dark
- ___ 185. Grouping of 6 buttons - includes Wild Strawberries, Three Braids, etc.
- ___ **186. Dragon & Lotus 9" plate - blue - very nice, very rare**
- ___ 187. Bishop's Mitre 7 3/4" vase - blue - Riihimaki, scarce & pretty
- ___ **188. Autumn Acorn 9" plate - green - scarce**
- ___ 189. Stretch Glass Fenton Optic 7 pc. water set - celeste blue - has lid
- ___ **190. Diamond Point 8" squatty vase - aqua opal - rare in this squatty version**
- ___ **191. Diamond Point 10 1/2" vase - aqua opal - scarce, nice**
- ___ 192. Diamond Point 9 1/2" vase - blue - super
- ___ 193. Dragon & Lotus ruffled bowl - green - nice
- ___ 194. Moon & Stars 7 pc. water set - marigold - nick on spout of pitcher, one tumbler has minor nick, have not seen this before
- ___ **195. Stippled Three Fruits Medallion spt ftd ruffled bowl - aqua opal - scarce, nice, minor nick on one cleat**
- ___ 196. Three Fruits Medallion spt ftd ruffled bowl - amethyst - pretty
- ___ 197. Three Fruits Medallion spt ftd ruffled bowl - marigold
- ___ 198. Parlor Panels 3 3/4" unswung vase - marigold - some might call it clambroth, super pretty
- ___ **199. Stag & Holly lg size ftd ruffled bowl - blue - super**
- ___ **200. Fenton's Fine Rib 11 1/2" vase - vaseline opal - rare vase for this larger version**
- ___ 201. M'burg Grape Wreath Variant 8" round bowl - green - radium
- ___ 202. Star & Fan 8 pc. cordial set - marigold
- ___ 203. Elektra 9 1/2" vase - blue - Brockwitz, typical polishing chips on base, one larger up the side
- ___ 204. Peacocks PCE bowl w/ribbed back - blue - electric, one ruffle is funky (Jan's words)
- ___ 205. Peacocks PCE bowl w/ribbed back - amethyst - epoxy in excess glass between points, some may call this lavender
- ___ 206. Buzz Saw lg size cruet - marigold - no stopper
- ___ **207. Buzz Saw small size cruet stopper only - marigold - if you have a bottle, this is a rare stopper**

- ___ **208. Rustic 19" funeral vase w/plunger base - blue - super pretty example, rare**
- ___ 209. Karen 6 pc. berry set - amber - non American, master bowl has crack in base, one sauce has nick on point
- ___ 210. Blackberry Block 7 pc. tankard water set - blue - pitcher is cracked, tumblers are good
- ___ 211. Hearts & Flowers ruffled compote - aqua opal - nice
- ___ 212. Grape & Cable small size ruffled fruit bowl - blue - scarce color & nice
- ___ 213. Grape & Cable small size ruffled fruit bowl - purple - nice
- ___ 214. M'burg Little Stars 7" ruffled bowl - marigold - satin, nice
- ___ **215. Palm Beach 7" whimsey vase - purple - very unusual, neat shape**
- ___ 216. M'burg Grape Wreath Variant crimped edge sauce - marigold - radium, nice
- ___ 217. Starburst 10" vase - blue - Riihimaki, nice
- ___ 218. Stippled Peacocks ruffled bowl w/ribbed back - purple - nice
- ___ **219. Tree Trunk 10" vase - aqua opal - butterscotch & nice, pretty example**
- ___ 220. Tree Trunk 10" vase - sapphire - scarce color, chip on base
- ___ 221. Tree Trunk 10 1/2" vase - lime green - super nice
- ___ 222. Tree Trunk 10" vase - blue - fantastic, tiny pinpoint on tip of point
- ___ 223. Tree Trunk 10" vase - green
- ___ 224. Tree Trunk 10" vase - purple - fabulous
- ___ 225. Tree Trunk 9" vase - marigold
- ___ **226. Wishbone & Spades chop plate - purple - very scarce plate**
- ___ 227. Grape & Cable powder jar - purple - manufacture pitting on outside top band of base, all made that way
- ___ 228. Wishbone ftd ruffled bowl - marigold - very pretty
- ___ 229. Spinning Starlet 6" vase - blue - Karhula, scarce
- ___ 230. M'burg Peacock berry sauce - amethyst - radium, super
- ___ 231. M'burg Whimsey Proof berry sauce - amethyst - radium
- ___ 232. Good Luck PCE bowl w/ribbed back - marigold - pretty pastel irid.
- ___ 233. Scroll Embossed small size ruffled compote - purple - nice
- ___ 234. Holly ruffled hat - amber / amethyst - scarce color, slight burst in base
- ___ 235. Rex 3 1/2" miniature vase - marigold - EDA, a cutie
- ___ **236. Stippled Peacocks 9" plate w/ribbed back - renninger blue - very pretty irid. for these, great example**
- ___ **237. Stippled Peacocks 9" plate w/ribbed back - marigold - very pretty**
- ___ 238. Eye of the Queen tumbler - marigold - found by Karen, non American
- ___ 239. Scroll Embossed miniature ruffled compote - purple - nice
- ___ **240. Tree Trunk 8" squatty vase - ice blue - very pretty irid., scarce**
- ___ **241. Tree Trunk 7" squatty vase - blue - also very pretty**
- ___ 242. Tree Trunk 7" squatty vase - purple - another beauty
- ___ 243. Peruvian Rings enameled top pitcher - teal green - named by Karen, found in Peru
- ___ 244. Rose & Drape 7 1/2" vase - marigold - nice, rare
- ___ **245. Rose Show ruffled bowl - green - very nice example, scarce color**
- ___ **246. Rose Show ruffled bowl - blue - pretty, has very minor manufacture splits between ruffles**
- ___ 247. Greek Key tumbler - marigold - a beautiful one!
- ___ 248. Imperial Jewels 10" vase - smoke irid. on milk glass - very unusual coloring
- ___ **249. Beetle ashtray - blue**
- ___ 250. N's Thin Rib 10" vase - sapphire - scarce color, large chip on base
- ___ **251. Faceted Butterfly hatpin - dark - very hard one to find!**
- ___ 252. Hearts & Cross hatpin - dark
- ___ 253. Top of the Morning hatpin - dark
- ___ 254. Butler's Mirror hatpin - dark
- ___ 255. Basket Flower hatpin - dark
- ___ 256. Triad hatpin - dark
- ___ 257. Grouping of 14 buttons - including Alligator, Grist Mill I & II, etc.
- ___ **258. Spector's Department Store / Heart & Vine 9" plate - marigold - scarce & nice advertising plate**
- ___ 259. Apple Blossom Twigs IC shaped bowl - purple - nice
- ___ **260. Many Fruits round shaped 8 pc. punch set - purple - pretty set, one punch cup has chip on base**
- ___ 261. Collection of 3 Right Hand Vases - marigold - 5", 6 1/2" and 8", 8" has flake on base, smallest one has a small key in the glass in the base, very unique!
- ___ 262. Left Hand 5 1/2" vase - marigold
- ___ **263. Wishbone ftd 9" plate - purple - very pretty example for these, nice even irid.**
- ___ 264. Vintage 9" ruffled bowl - Persian Blue - rare color, very minor sharp point
- ___ 265. Freefold 12" vase - purple - nice
- ___ 266. Singing Birds mug - marigold
- ___ 267. Tennessee Star 7 1/2" vase - blue - Riihimaki
- ___ 268. Four Pillars 11" vase - sapphire - scarce
- ___ 269. Four Pillars 11" vase - aqua opal - small chip on side of one foot
- ___ 270. Enameled Aurora Pearls 12" bowl - opaque white - enameled floral decoration
- ___ 271. Hattie deep ruffled bowl - purple - very pretty
- ___ **272. Loganberry vase - green - some might call it teal green, nice for these**
- ___ 273. Waterlily ftd round master berry bowl - amethyst - very pretty irid.
- ___ 274. Grape & Cable giant ruffled compote - purple - four small interior nicks in bowl
- ___ 275. M'burg Blackberry Wreath IC shaped sauce - amethyst - radium
- ___ **276. Colonial Lady vase - purple - typical manufacture open bubble inside of ruffle, this is not unusual on these**
- ___ 277. Fenton's Peacock at Urn IC shaped bowl - vaseline - really hard color to get
- ___ **278. Concord 3 in 1 edge bowl - amethyst - super pretty irid.**

- ___ 279. Circle Scroll 7" vase - purple - super pretty
- ___ 280. Circle Scroll 7 1/2" vase - marigold - super nice, great pair of vases
- ___ **281. Oriental Poppy tankard water pitcher w/ tumbler - purple - scarce & very nice**
- ___ 282. N's Thin Rib 13" mid size vase - green - scarce
- ___ **283. Holly ruffled hat shape - amethyst opal - rare color, hard to find & nice**
- ___ **284. Diamond Backed Beetle hatpin - dark - super rare, small chip on side (most of these damages came when they made them)**
- ___ 285. Spiral Dance hatpin - dark
- ___ 286. Throw Pillow hatpin - dark
- ___ 287. Six Plums hatpin - dark
- ___ 288. Big Butterfly hatpin - dark
- ___ 289. Rooster hatpin - red - very pretty
- ___ 290. Grouping of 17 contemporary buttons
- ___ **291. Morning Glory 19" funeral vase - purple - super pretty**
- ___ 292. Andean Cherries and Mirrored Vees tumblers - marigold - both have chips on top edge, both found in Brazil
- ___ **293. Jockey Club advertising ruffled bowl - amethyst - very pretty for these, rare**
- ___ 294. Grape & Cable hatpin holder - green - nice
- ___ 295. Grape & Cable hatpin holder - purple
- ___ 296. Miniature Tree Bark 4 3/4" bud vase - gold flashed - unusual
- ___ 297. Gnome toothpick or shot glass - marigold - found in South America, pontel on the bottom
- ___ **298. Pansy hdd nappy - blue - rare color with pretty irid.**
- ___ 299. Lot of 3 Memphis punch cups - marigold
- ___ **300. M'burg Bullseye & Loop 6 1/2" squatty vase - amethyst - scarce, nice**
- ___ 301. Grapes of Wrath 6 1/2" vase - marigold - found in Argentina
- ___ **302. Poppy Show vase - marigold - very nice example, scarce**
- ___ 303. M'burg Peacock IC sauce - amethyst - radium, tiny nick on edge
- ___ 304. N's Peacock at Urn ruffled bowl - marigold - has a funky ruffle, (turned under) pretty irid.
- ___ 305. Imperial Flute 12" vase - purple - pretty
- ___ 306. Basketweave Open Edge JIP basket - red - nice
- ___ 307. Beaded Cable rose bowl - aqua opal
- ___ 308. Kulor 6" vase - blue - EDA, scarce
- ___ 309. Lules 8" plate - marigold - Argentina, chip on edge
- ___ 310. Flowers & Frames dome ftd ruffled bowl - purple - super!
- ___ 311. M'burg Boutonniere ruffled compote - green - radium, nice
- ___ **312. Lattice & Poinsettia ftd ruffled bowl - marigold - scarce, very pretty**
- ___ 313. Dragon & Lotus IC shaped bowl - blue
- ___ 314. Dandelion mug - aqua opal
- ___ **315. Rustic 17 1/2" funeral vase - amethyst - very scarce vase & nice**
- ___ **316. Rustic 19 1/2" funeral vase - blue - also nice**
- ___ **317. Butterflies bonbon - amethyst - has original paper label on bottom that says "Easter Greetings Swantner & Young Fenton, MO 1910"**
- ___ 318. Captive Rose 9" plate - green - nice
- ___ 319. Leaf Columns 7" squatty vase - purple
- ___ 320. Nippon PCE bowl w/ribbed back - ice blue - nice
- ___ 321. Lattice & Points 7 1/2" vase - blue
- ___ 322. Blackberry Spray ruffled hat - red - super pretty irid.
- ___ 323. Scroll Embossed round bowl - purple - nice
- ___ 324. N's Fine 11 1/2" vase - sapphire - scarce color, nice
- ___ 325. Scroll Embossed ruffled sauce w/File back - purple - nice
- ___ 326. Miniature Morning Glory 5 1/2" vase - purple
- ___ **327. Coral 9" plate - marigold - scarce plate**
- ___ 328. Orange Tree mug - blue - nice
- ___ 329. Peacock at the Fountain ruffled compote - blue - scarce
- ___ 330. Grape & Gothic Arches tumbler - marigold - pretty
- ___ 331. Smooth Panels 6" squatty vase - clear iridized - 3 1/2" base, has Imperial Cross Mark in base
- ___ **332. Garden Path Variant 10" ruffled bowl - purple - super pretty, very scarce, a dandy**
- ___ 333. Propeller compote - green
- ___ 334. Thin Rib & Drape 5 3/4" vase - marigold - super
- ___ 335. Yugoslav Brandy bottle - clear iridized
- ___ 336. Good Luck ruffled bowl w/ribbed back - blue
- ___ **337. Ribbed Tornado vase - marigold - super pretty example of this rare vase, these don't come up often**
- ___ 338. Scroll Embossed 9" plate - purple - pretty
- ___ 339. Tree Trunk 13" mid size vase - marigold - nice
- ___ 340. Scroll Embossed miniature round compote - purple - nice
- ___ **341. Hearts & Flowers 9" plate w/ribbed back - marigold - super pretty, this is a dandy!**
- ___ 342. 1906 Los Angeles Shriners decorated 6" plate - clear
- ___ 343. 1910 New Orleans Shirners champagne - clear
- ___ 344. 1909 Louisville Shirners champagne - clear
- ___ 345. 1911 Rochester, NY Shriners champagne - clear
- ___ 346. 1904 Atlantic City Shriners mug - clear
- ___ 347. German maker 8 3/4" vase - smoke - LGW or Leinauer Glaswaren, contemporary
- ___ 348. Fenton Sailboat & Seagull 9" vase - blue - contemporary
- ___ 349. Fenton Hanging Hearts 8" vase - signed Dave Fetty #1238 of 1250
- ___ 350. Woodlands 2003 deep round bowl commemorative - blue

SEECK AUCTIONS
 P.O. BOX 377
 MASON CITY, IA 50402

PRESORTED
 FIRST CLASS MAIL
 US POSTAGE
 PAID
 MAIL EXPEDITORS



46.

**2016 CARNIVAL
 GLASS AUCTION**

Sat., Sept. 24 9:30 a.m.
 Senior Activity Center
 Mason City, Iowa 50401

T4 P1 97
 LEE MARKLEY
 BOX 306
 MENTONE IN 46539-0306

