

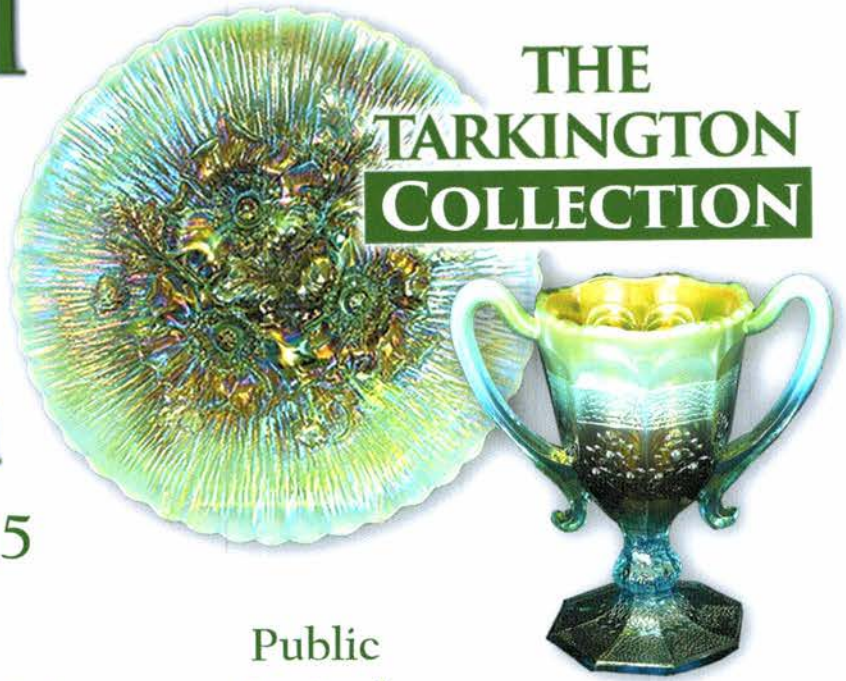
Carnival Glass 2018 Auction

Saturday, Sept. 15
9:30 a.m.

Embassy Suites
Airport Hotel
Kansas City, Mo.

Public
Invited

THE
TARKINGTON
COLLECTION



Seeck Auctions
Jim & Jan Seeck
641-424-1116



Jim & Jan Seeck

SATURDAY, SEPT. 15, 2018 — 9:30 A.M. 641-424-1116

Embassy Suites Airport Hotel — Kansas City, Mo.
7640 Tiffany NW Springs Parkway

FRIDAY PREVIEW

- ★ **ABSENTEE and LIVE BIDDING** is available on-line through Auction Flex at: www.seeckauction.com
- ★ **NO BUYER'S PREMIUM** -- EMAIL: jimjan@seeckauction.com

THE TARKINGTON COLLECTION

The Embassy Suites Hotel in Kansas City will be the place to be in September! The third and final auction of Carnival Glass from the Carlton and Jane Tarkington Collection will be sold to the

highest bidder. There is a wide variety of fantastic glass with many rarities and one of a kind pieces. It has been a pleasure working with Jane and the Tarkington Family. Come and enjoy a fine Carnival Glass auction this fall.

LODGING

Reservations can be made by calling the hotel directly at 816-891-7788. If booking online, please use code: "SEE" The booking link is also on our main website: www.seeckauction.com If you have a problem or questions about reservations at the hotel please give us a call 641-424-1116.

Terms: Cash or Check, VISA, MasterCard and Discover accepted w/proper ID. **4% Clerking Fee** on all purchases made using credit cards. Announcements made day of sale take precedence over any printed information.

ABSENTEE BIDDING OPTIONS

- 1) **Call us by phone at:** (641) 424-1116
- 2) **Prebid: Enter your bids from our website into our online catalog through the Auction Flex system.**
 - *An exciting advantage of entering your bids online yourself*, is the option to be notified by email if you are outbid on an item. You will know when you are outbid on an item and you can increase your bid on that item or bid on something else.
- 3) **Live Phone Bidding: Is available on pieces with an estimated sale price of \$500 or more.** If you would like to participate in live phone bidding, contact us by **the Thursday before the auction.**
- 4) **Real-time Bidding:** Bid live during the auction through Auction Flex live webcast bidding.

There is a \$7 handling charge for each successful bid. Shipping and insurance charges are additional.

Bidders will be notified by phone/email if their bid(s) are successful. This will be done 1 - 3 days after the auction.

BID INCREMENTS:

\$1 - \$100/\$5	\$100 - \$200/\$10	\$200 - \$700/\$25	\$700 - \$1,500/\$50
\$1,500 - \$3,000/\$100	\$3,000 - \$5,000/\$250	\$5000+	Auctioneer's Discretion



THE TARKINGTON COLLECTION

CARLTON AND JANE TARKINGTON

- ___ 1. Constellation ruffled compote - lavender - very pretty
- ___ 2. Tennessee Star 5 1/2" vase - blue - Riihimaki, very nice, scarce
- ___ 3. Tennessee Star spittoon shaped 5" vase - marigold Riihimaki, very pretty, also scarce
- ___ 4. Target 6 1/2" squatty vase - white - pretty, very tiny nick on seam of base
- ___ 5. M'burg Pipe Humidor - amethyst - radium, extremely rare & super pretty, a Millersburg collector's dream
- ___ 6. M'burg Pipe Humidor - marigold - radium, also a fantastic piece of extremely rare Millersburg glass



- ___ 12. Acorn Burrs 9 pc. punch set - blue - yes, blue, the only one I have ever heard of, a rare, rare opportunity



- ___ 13. Acorn Burrs 8 pc. punch set - lime green - extremely rare & super pretty, punch cups are ice green



- ___ 7. Fern Brand Chocolates adv. card tray shaped plate - amethyst - very pretty, scarce

- ___ 8. Diamond Lace tumbler - marigold- very rare tumbler, nice example

- ___ 9. Poppy Show 9" plate - aqua opal - pastel & super pretty! this is a beautiful one! has a very tiny nick on base

- ___ 10. Poppy Show 9" plate - blue - electric & pretty, couple of tiny nicks on base

- ___ 11. Poppy Show 9" plate - marigold - very nice



- ___ 14. Acorn Burrs 10 pc. punch set - ice blue - super pretty irid. on the punch bowl & base, cups are a bit darker, extremely rare

- ___ 15. Acorn Burrs 8 pc. punch set - white - pretty irid., very rare & highly desirable

- ___ 16. Acorn Burrs 8 pc. punch set - green - most people would call this emerald, the bowl is fantastic, has a bruise on the base of the bowl, from the Bingham collection

- ___ 17. Acorn Burrs 8 pc. punch set - purple - very nice example, scarce
- ___ 18. Strawberry bonbon - lime green opal - scarce color, nice



- ___ 19. Dandelion tankard water pitcher - ice green - only known example, has the ribbed interior and very pretty! WOW!
- ___ 20. Dandelion 7 pc. tankard water set - ice blue - great matching set & beautiful, extremely rare
- ___ 21. Dandelion 5 pc. tankard water set - white - extremely rare color, very nice, one tumbler has nick on base
- ___ 22. Dandelion 3 pc. tankard water set - green - scarce, very nice
- ___ 23. Dandelion 7 pc. water set - purple - fantastic electric irid., just beautiful!
- ___ 24. Dandelion 7 pc. tankard water set - marigold - dark & super, beautiful set!

___ 25. N's
Corn vase w/
stalk base
- aqua opal -
pastel w/lots of
opal, rare, rare



___ 26. N's
Corn vase w/
stalk base - ice
blue - very nice
irid. on this
rare vase

- ___ 27. N's Corn vase w/plain base - marigold - nice
- ___ 28. N's Corn vase w/stalk base - green - pretty, scarce
- ___ 29. N's Corn vase w/stalk base - purple - very nice
- ___ 30. N's Corn vase w/plain base - lime green
- ___ 31. N's Corn vase w/stalk base - ice green
- ___ 32. N's Corn vase w/plain base - clear - very nice irid., called this clear because it is different from the regular white frosty ones

CORN VASE

NORTHWOOD

___ 33. M'burg Grape
Leaves ruffled bowl - green
- radium & stunning, has
lots of blue irid. in the
right places

___ 34. Coin Spot ruffled
compote - celeste blue -
stretchy, pretty, rare, this is a
great set



___ 35. Coin Spot ruffled
compote - blue - stretchy,
pretty, rare

___ 36. Coin Spot ruffled
compote - ice green - stretchy,
pretty, rare

___ 37. Good Luck PCE
bowl w/ribbed back
- aqua opal - fantastic
example as far as beauty
& opal, does have slight
polishing on outside edge
and minor nick on cleat of
horseshoe, still a
great piece



- ___ 38. Good Luck PCE bowl w/BW back - green - nice
- ___ 39. Good Luck PCE bowl w/ribbed back - blue - electric, nice
- ___ 40. Good Luck PCE bowl w/ribbed back - purple - pretty
- ___ 41. Good Luck PCE bowl w/ribbed back - marigold - dark, super
- ___ 42. Good Luck PCE bowl w/ribbed back - pastel marigold - very pretty irid.



___ 43. Orange
Tree loving cup -
aqua opal - only
one known, from
the Whitley
collection, super
neat piece, a rare
opportunity!

___ 44. Orange Tree
loving cup - white
- very scarce color,
nice

- ___ 45. Orange Tree loving cup - coke bottle blue - unusual color, rare
- ___ 46. Orange Tree loving cup - amethyst - scarce color, nice example
- ___ 47. Orange Tree loving cup - green - super pretty, scarce

- ___ 48. Orange Tree loving cup - blue - a beauty
- ___ 49. Orange Tree loving cup - marigold - dark & super

- ___ 50. Grape & Cable midsize 10 pc. punch set - ice blue - super rare set & beautiful!



- ___ 51. Grape & Cable midsize 13 pc. punch set - ice green / lime green - base & 4 cups are lime green, bowl & 7 cups are ice green, super rare to find in either color

- ___ 52. Grape & Cable midsize 8 pc. punch set - white - very rare color w/pretty irid., so hard to find these midsize sets
- ___ 53. Grape & Cable midsize 8 pc. punch set - blue - another rare color for these, pretty
- ___ 54. Grape & Cable midsize 6 pc. punch set - green - very pretty
- ___ 55. Grape & Cable midsize 10 pc. punch set - purple - always in demand

- ___ 56. Grape & Cable midsize 8 pc. punch set - marigold - dark & pretty, what a beautiful line up!
- ___ 57. Cherry Circles bonbon - red - cherry red color & very rare



- ___ 58. Flute #3 tumbler - blue - rare color for Imperial, very nice

- ___ 59. M'burg Mitered Ovals vase - marigold - dark, super rare piece, a classic vase for the M'burg collector



- ___ 60. M'burg Mitered Ovals vase - amethyst - rare, rare vase & highly desired

Mitered Ovals

MILLERSBURG

- ___ 61. Poinsettia & Lattice ftd ruffled bowl - marigold - pretty

- ___ 62. Rose Show 9" plate - marigold on custard - extremely rare especially in good condition, very pretty & mint!

- ___ 63. Rose Show 9" plate - lime green - another extremely rare color, pretty

- ___ 64. Rose Show 9" plate - ice green - scarce color, pretty

- ___ 65. Rose Show 9" plate - ice blue - another pretty one, has spot of epoxy on rose

- ___ 66. Rose Show 9" plate - white - super pretty for white!

- ___ 67. Rose Show 9" plate - green - has pretty multi colored irid., scarce color

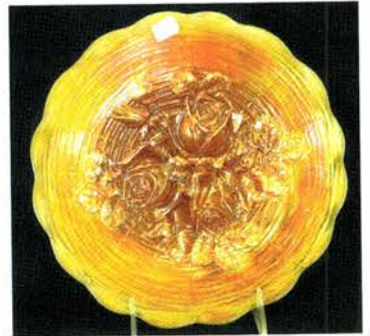
- ___ 68. Rose Show 9" plate - green - another pretty plate w/different look, scarce color

- ___ 69. Rose Show 9" plate - blue - fantastic irid., very tiny spot of epoxy on one rose

- ___ 70. Rose Show 9" plate - purple - scarce color, nice

- ___ 71. Rose Show 9" plate - marigold - dark & pretty

- ___ 72. Rose Show 9" plate - marigold - pastel irid., super!!



- ___ 73. Four Seventy Four 13 pc. punch set - emerald green - super rare & super beautiful set, very desirable

- ___ 74. Four Seventy Four 7 pc. punch set - marigold - nice

___ 75. Grape & Cable tankard water pitcher - ice green - extremely rare pitcher, super pretty, not many known

___ 76. Grape & Cable 5 pc. tankard water set - marigold - dark & pretty.



___ 77. Paneled Tree Trunk 7 1/2" squatty vase - purple - another great rarity, made by Dugan, couple of pinpoints on top edge, minor nick on base, very pretty & unusual, you just don't get a chance to sell these every day!

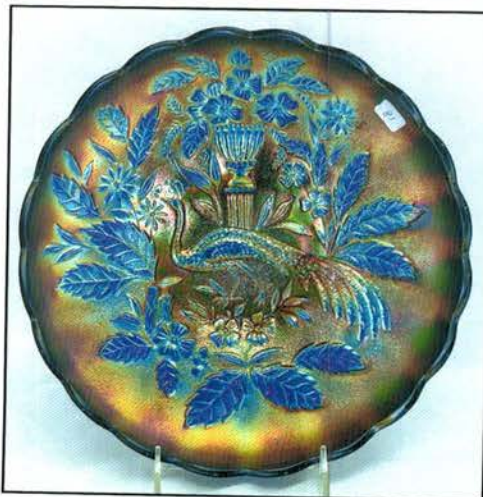


___ 78. N's Thin Rib 7" squatty vase - ice blue - very pretty irid.



___ 79. Stippled Peacock at Urn master IC bowl - sapphire - extremely rare color, nice

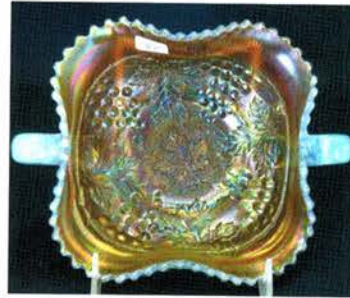
___ 80. Stippled Peacock at Urn master IC bowl - smoke - another rare color & is beautiful



___ 81. Stippled Peacock at Urn master IC bowl - blue - a stunning piece of glass, rare

___ 82. Stippled Peacock at Urn master IC bowl - marigold - lots of pinks & yellows, a pretty one!

___ 83. Chatelaine 7 pc. water set - purple - absolutely stunning Imperial water set, tumblers match nice, 2 have small nicks on edge base



___ 84. Stippled Grape & Cable bonbon - aqua opal - butterscotch w/super pretty irid., an outstanding rarity

___ 85. Grape & Cable bonbon - not sure of color - went from smoke to pastel blue, you can decide, very pretty no matter what color

___ 86. Grape & Cable bonbon - blue - electric & pretty

___ 87. M'burg Many Stars square shaped crimped edge bowl w/6 point star - amethyst - radium, super pretty & extremely rare, M'burg at its best

___ 88. Poppy pickle dish - ice blue - nice



___ 89. Daisy & Plume ftd rose bowl w/ Raspberry interior - aqua opal - extremely rare rose bowl w/very few known, pretty

___ 90. Daisy & Plume ftd rose bowl w/ Raspberry interior - ice green - rare color, nice



___ 91. Daisy & Plume ftd rose bowl w/Raspberry interior - ice blue - super pretty irid.

___ 92. Daisy & Plume ftd rose bowl w/plain interior - horehound - have not seen another in this color, very neat piece, typical tiny pinpoint on edge of foot

___ 93. Daisy & Plume ftd rose bowl w/Raspberry interior - purple - pretty

___ 94. Daisy & Plume ftd rose bowl w/rayed interior - green - nice



___ 95. Stippled Grape & Cable ruffled punch bowl & base - smokey lavender slag - very unusual color, have never seen another, has very pretty irid.

GRAPE & CABLE NORTHWOOD

___ 96. Stippled Grape & Cable 8 pc. punch set - blue - very rare set, nice

___ 97. Waterlily ftd ruffled sauce - red - rare, nice



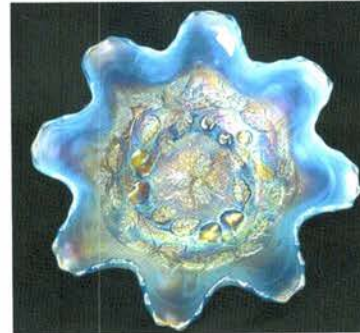
___ 98. Superb Drape vase - lime green w/marigold overlay - only one known, very pretty

___ 99. Stippled Rays ruffled compote - celeste blue - stretchy irid., scarce

___ 104. Utah Liquor Co. handgrip advertising plate - amethyst - very pretty irid. for these

___ 105. Fantail ftd chop plate - marigold - super rare & super pretty, highly desirable chop plate, manufacture spot on flat of face, looks like sand grit and has caused it to peel up

___ 106. Dugan Cherries 3 in 1 edge ftd bowl - purple - super pretty



___ 107. Stippled Three Fruits Medallion spt ftd ruffled bowl - powder blue opal - very rare bowl, only know of 2 of these, pretty irid.

___ 108. Ten Mums CRE bowl - green - super pretty, a Fenton beauty

___ 109. Ten Mums CRE bowl - amethyst - another beautiful Fenton piece

___ 110. Ten Mums 6 pc. tankard water set - white - we don't sell these very often, super pretty!

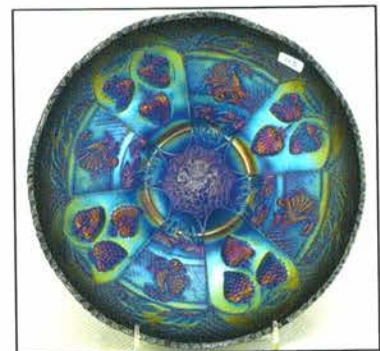


___ 111. Ten Mums 7 pc. water set - blue - this pitcher is fantastic, another stunning piece of glass

___ 112. Ten Mums 7 pc. water set - marigold - another great one, dark



___ 113. Dragon & Strawberry IC shaped bowl - blue - very scarce, beautiful irid.



___ 114. Dragon & Strawberry IC shaped bowl - marigold - pretty, scarce

___ 115. Tree Trunk 17 1/2" funeral vase - purple - super pretty irid., very rare

TREE TRUNK NORTHWOOD

___ 100. Inverted Thistle 7 pc. water set - amethyst - very rare set & nice, not often seen complete



___ 101. Caroline 3 in 1 edge bowl - blue opal - only one I've seen, neat piece of blue opal



___ 102. Rose Show Variant 9" plate - marigold - fantastic pink irid., a dandy!

___ 103. Rose Show Variant 9" plate - renninger blue - very scarce & highly desirable



___ 116. Tree Trunk 14" elephant foot funeral vase - purple - another scarce & desirable vase

___ 117. Stippled Grape & Cable PCE bowl w/ribbed back - ice blue - scarce, nice

___ 118. Stippled Grape & Cable Variant PCE bowl w/ribbed back - blue - has electric highlights, scarce

___ 119. Christmas compote - marigold - a Carnival Glass classic, dark, nice



___ 132. M'burg Hobstar & Feather giant rose bowl - green - has super pretty satin irid., one of the better examples, rare

___ 133. Persian Medallion 7" plate - green - rare size & color

___ 134. Apple Tree water pitcher w/1 tumbler - white - pitcher is very pretty & scarce

___ 135. Apple Tree 7 pc. water set - marigold - dark, nice



___ 136. Stippled & Banded Grape & Cable lg ftd fruit bowl - purple - super pretty, a beautiful bowl



___ 137. Leaf & Beads rose bowl - lime green opal - super rare rose bowl that is not often sold, very nice

___ 138. Leaf & Beads rose bowl - aqua opal - pastel & pretty, minor nick on color base

___ 139. Leaf & Beads rose bowl - ice green - scarce color, nice

___ 140. Leaf & Beads rose bowl - white - nice example

___ 141. Leaf & Beads rose bowl - green - super pretty

___ 142. Leaf & Beads rose bowl - blue - pretty

___ 143. Leaf & Beads rose bowl - marigold - dark, nice

___ 144. Peter Rabbit 9" plate - green - rare & pretty, couple of small nicks on back edge of plate

___ 145. Enameled Columbine water pitcher - blue - very pretty example



___ 120. Six Petal crimped edge ruffled bowl - purple - pretty

___ 121. Hearts & Flowers 9" plate w/ribbed back - green - scarce color, nice

___ 122. Hearts & Flowers 9" plate w/ribbed back - purple - very pretty

___ 123. Hearts & Flowers 9" plate w/ribbed back - marigold - pink & yellow irid.



___ 124. Fashion 8 pc. punch set - smoke - very rare set in this color, pretty

___ 125. Daisy & Drape flared out vase - aqua opal - butterscotch, nice

___ 126. Poppy Show ruffled bowl - ice green - pretty example, scarce color

___ 127. Poppy Show ruffled bowl - ice blue - beautiful

___ 128. Poppy Show ruffled bowl - blue - some epoxy on edge & roughness around base

___ 129. Poppy Show ruffled bowl - purple - pretty

___ 130. Poppy Show ruffled bowl - marigold - dark, nice

___ 131. Poppy Show ruffled bowl - marigold - pastel, super



___ 146. M'burg Peacock master IC shaped bowl - green - radium, rare & beautiful

___ 147. M'burg Peacock master IC shaped bowl - amethyst - radium & super! this one is turned up more than usual, maybe even turned in a little

- ___ 148. Colonial Lady vase - purple - very scarce, pretty
- ___ 149. Peacocks ruffled bowl w/ribbed back - ice blue - pretty irid. for these
- ___ 150. Peacocks ruffled bowl w/ribbed back - aqua opal - a classic Northwood aqua opal piece, pretty
- ___ 151. Peacocks ruffled bowl w/ribbed back - green - nice
- ___ 152. Peacocks ruffled bowl w/ribbed back - purple - super pretty



___ 163. Hearts & Flowers ruffled compote - renninger blue - scarce color, nice

- ___ 164. Hearts & Flowers ruffled compote - aqua opal
- ___ 165. Hearts & Flowers ruffled compote - amethyst - pretty, repaired chip on base

___ 166. Hearts & Flowers ruffled compote - marigold

___ 153. Brooklyn Bridge 10 ruffled bowl - marigold - satin, nice



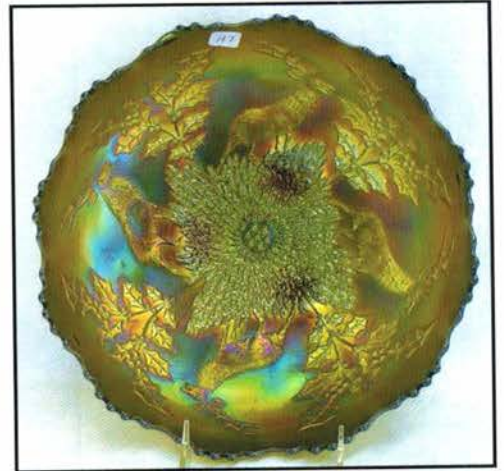
___ 154. Vintage 3 in 1 edge 9" bowl - red - extremely rare color & shape, nice

___ 155. Poppy Show vase - marigold - nice

___ 156. Harvest Poppy ruffled compote - blue - has electric highlights

___ 157. Harvest Poppy ruffled compote - purple - super pretty

___ 167. Stag & Holly lg size ftd IC shaped bowl - green - super pretty example of this rare color, hard to find this nice



___ 168. Stag & Holly lg size ftd IC shaped bowl - marigold - rare, radium version, super pretty

___ 169. Stippled Grape & Cable humidor - blue - very scarce, tiny nick on top edge of base



___ 158. Peach 7 pc. water set - white - very scarce, has gold decoration

___ 159. Peach 5 pc. water set - blue - beautiful set, scarce



___ 170. Holly IC shaped bowl - amber - scarce color

___ 171. Ballard Merced, Cal. 6" advertising plate - amethyst - very nice plate, scarce

___ 172. Orange Tree w/ trunk 9" plate - ice green - extremely rare Fenton ice green, light on irid.

___ 160. Morning Glory 17" funeral vase - smoke - rare color & highly desirable, nice

___ 173. Orange Tree w/trunk 9" plate - blue - very pretty example

___ 174. Orange Tree w/trunk 9" plate - white - very nice

___ 175. Orange Tree 9" plate - marigold - dark, nice

___ 176. Orange Tree w/trunk 9" plate - marigold - some might call this one a light yellow, has super irid., bubble in glass

___ 177. Orange Tree IC shaped bowl - red - rare bowl & nice

___ 178. Jeweled Heart ftd water pitcher & 1 tumbler - marigold - scarce, nice

___ 179. Embroidered Mums ruffled bowl w/ ribbed back - ice blue - tiny sliver between points

___ 180. Embroidered



___ 161. 1911 Birmingham Age Herald 9" plate - amethyst - super example of this rare advertising plate



___ 162. Acorn ruffled bowl - red - nice

BIRMINGHAM AGE HERALD

FENTON

Mums ruffled bowl w/ribbed back - blue - scarce

___ 181. Grape Arbor deep round ftd fruit bowl - peach opal - rare shape & pattern, very nice

___ 182. Fenton's Peacock at Urn 9" plate - blue - pretty



___ 183. Fenton's Peacock at Urn 9" plate - white - very frosty & beautiful

___ 184. Fenton's Peacock at Urn 9" plate - marigold - nice

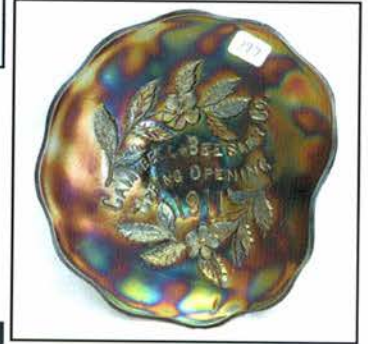
___ 185. Jockey Club advertising handgrip plate - amethyst - pretty irid.



___ 197. M'burg Campbell & Beesley 1911 advertising handgrip 6" plate - amethyst - rare M'burg advertising

___ 195. Grape & Cable master IC bowl - marigold - pretty

___ 196. Leaf Chain 9" IC shaped bowl - red - this is a very rare bowl, not many around, has small nick on base

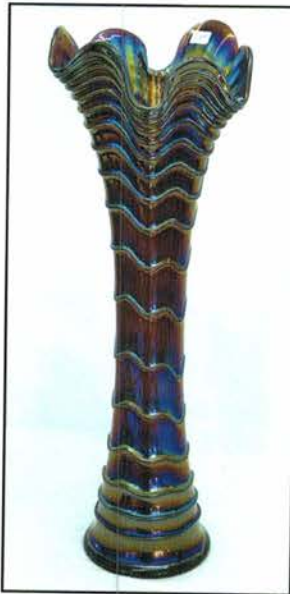


___ 186. Fruits & Flowers bonbon - ice green - very pretty example

___ 187. Fruits & Flowers bonbon - ice blue - nice

___ 188. Fruits & Flowers bonbon - aqua opal - has pretty light butterscotch irid.

___ 189. Ripple 19" funeral vase - purple - really nice example, so hard to find in the funeral vase size



___ 198. Peacock at the Fountain 4 pc. water set - white - scarce, nice, one tumbler has repair on base

___ 199. Peacock at the Fountain 7 pc. water set - blue - scarce, nice

___ 200. J.N. Ledford Company Souvenir of Cooleemee, NC advertising Heart & Vine 9" plate - marigold - super example of this very rare plate

___ 201. Holly ruffled bowl - red - nice



___ 190. Grape & Cable master IC bowl - ice blue - super pretty irid., rare color for these

___ 191. Grape & Cable master IC bowl - ice green - another beauty

___ 192. Grape & Cable master IC bowl - white - pretty

___ 193. Grape & Cable master IC bowl - green - super nice

___ 194. Grape & Cable master IC bowl - purple - very pretty



___ 202. Cambridge Near Cut cologne bottle - green - very scarce, nice

___ 203. Hearts & Flowers ruffled bowl w/ribbed back - green - tough color

___ 204. Hearts & Flowers ruffled bowl w/ribbed back - ice green - very pretty bowl

___ 205. Hearts & Flowers ruffled bowl w/plain back - ice blue - nice

___ 206. Hearts & Flowers ruffled bowl w/ribbed back - marigold - super pretty

___ 207. Butterfly & Berry 9" vase - red - cherry red color, nice

___ 208. Scroll Embossed 9" plate - purple - pretty

___ 209. Broken Arches 6 pc. ruffled punch set - marigold - very rare to find this ruffled version, nice

___ 210. Open Rose 9" plate - purple - super pretty example



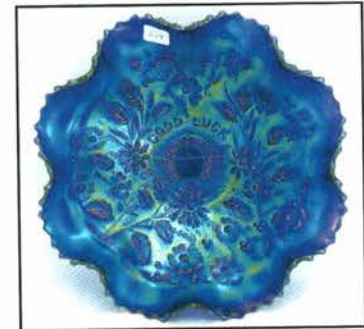
___ 211. Little Flowers
10" 3 in 1 edge bowl -
amberina - scarce color,
rare shape



___ 212. Dorsey &
Funkenstein advertising
6" plate - amethyst - hard
plate to find



___ 213. M'burg Hanging Cherries 7 pc. water set - green
- very seldom does one find this complete set, great
example



___ 214. Stippled Good
Luck ruffled bowl w/
ribbed back - blue - this is
the definition of electric
blue, wow!



___ 215. Stippled Good Luck ruffled bowl w/ribbed back -
marigold - pastel & pretty

___ 216. Stippled Good Luck ruffled bowl w/ribbed back
- ultra light pastel covered w/yellow irid.,
incredible bowl



___ 217. Lotus
& Grape 9"
plate - amethyst
- one of the
pretty ones!
scarce

___ 218. Tree Trunk
10" vase - aqua
opal - butterscotch
w/beautiful irid.!



___ 219. Tree Trunk 10" vase
- sapphire - very scarce color

___ 220. Tree Trunk
10" vase - lime green -
scarce color, nice

___ 221. Tree Trunk 11" vase
- ice green - pretty

___ 222. Tree Trunk 9 1/2"
vase - blue - super pretty

___ 223. Tree Trunk
11" vase - green - fantastic,
many would call this emerald

___ 224. Tree Trunk 9" vase - purple - super



___ 225. Grape & Cable
centerpiece bowl w/
straight up points - ice
green - scarce, nice

___ 226. Grape & Cable
centerpiece bowl w/turned
up points - marigold - nice



___ 227. Peacock & Grape 9" plate - green - rare color

___ 228. Peacock & Grape 9" plate - marigold - pastel &
super, lots of yellow irid.

___ 229. Paneled Dandelion tankard water pitcher & 1 t
tumbler - blue - scarce

___ 230. Good Luck 9" plate w/BW back - horehound - rare
color, has small epoxy spot on base

___ 231. Good Luck 9" plate w/BW back - green - nice



___ 232. Plume Panels 10" vase - red - super nice, very scarce item

___ 233. Wishbone ftd 9" plate - marigold - nice

___ 234. Dragon & Lotus IC shaped bowl - red - scarce

___ 235. Flowers & Frames dome ftd ruffled bowl - purple - pretty

PLUME PANELS FENTON



___ 236. Parlor Panels 4" squatty vase - smoke - neat!

___ 237. Strawberry epergne - purple - very pretty, large chip around bottom ring of lily

___ 238. Inverted Strawberry lg rose bowl - marigold - scarce item & nice, signed NEARCUT

___ 239. M'burg Strawberry Wreath tri-cornered crimped edge bowl - amethyst - radium & nice, rare shape, tiny pinpoint on edge

___ 240. Orange Tree 7 pc. water set - marigold - typical chip on foot of pitcher, few tumblers have foot chips



___ 241. Central Shoe Store advertising 6" plate - amethyst - very nice for these, scarce

___ 242. M'burg Big Fish IC shaped bowl - green - radium, very rare in radium, pretty



___ 243. Illinois Soldiers & Sailors Home 7" plate - blue - rare plate & nice

___ 244. Illinois Soldiers & Sailors Home 7" plate - marigold - tiny spot of epoxy on flagpole, very pretty

___ 245. Hearts & Flowers PCE bowl w/ribbed back - purple - nice

___ 246. Daisy & Plume ftd candy dish w/Raspberry interior - ice blue - scarce, nice



___ 247. Concord 9" plate - green - scarce plate, nice

___ 248. Concord 9" plate - amethyst - very nice

CONCORD GRAPE

FENTON



___ 249. Knights Templar Dandelion mug - ice green - very scarce, nice example

- ___ 250. Dandelion mug - aqua opal - butterscotch
- ___ 251. Apple Blossom Twigs 3 in 1 edge bowl - purple - nice

___ 252. Holly IC shaped bowl - red - very rare bowl in the IC shape, spot of missing irid. in center

___ 253. Loganberry vase - purple - super

- ___ 254. Loganberry vase - amber - very pretty
- ___ 255. M'burg Seaweed 10" IC shaped bowl - amethyst - satin, very rare bowl, roughness around collar base

___ 256. Greek Key ruffled bowl w/BW back - marigold - nice



___ 264. M'burg Many Stars 3 in 1 edge bowl - green - radium, nice, 5 point star

- ___ 265. Australian Thunderbird lg size ruffled bowl - dark - nice
- ___ 266. Shell 9" plate - smoke - pretty irid.!



___ 267. Persian Medallion 6" plate - blue - pretty

___ 268. Persian Medallion 9" ruffled bowl - red - rare piece, couple small buffed spots on base



___ 269. Four Flowers chop plate - peach opal - scarce

___ 270. Grape & Cable banana boat - ice blue - pretty irid, quite scarce

___ 271. Grape & Cable banana boat - ice green - super nice, scarce

___ 272. Grape & Cable banana boat - white - nice



___ 257. Heavy Iris 7 pc. tankard water set - purple - rare set & nice

___ 258. M'burg Little Stars 9" IC shaped bowl - marigold - satin, rare shape, nice

___ 259. Dragon & Lotus 9" plate - blue - very rare plate

___ 260. Tree Trunk 13 1/2" midsize vase - blue - super nice, scarce

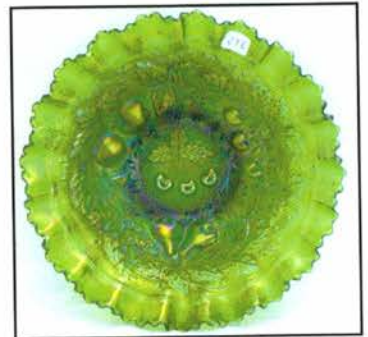
___ 261. Tree Trunk 13" midsize vase - green - pretty

___ 262. Tree Trunk 11 1/2" midsize vase - purple - super

___ 263. Drapery Variant 5 pc. water set - marigold - one tumbler has nick on top rim

___ 273. Stippled Three Fruits PCE bowl w/BW back - green - nice

___ 274. Stippled Three Fruits PCE bowl w/ribbed back - marigold - nice



___ 275. Blueberry 7 pc. water set - blue - scarce set, nice

___ 276. Peacock & Grape spt ftd ruffled bowl - red - nice



___ 277. 1914 Parkersburg Elks 7" plate - blue - very pretty irid. on this rare plate

___ 278. Wishbone PCE 10" bowl w/BW back - green

___ 279. M'burg Trout & Fly 3 in 1 edge bowl - amethyst - satin

___ 280. Palm Beach water pitcher - white - scarce

___ 281. Luster Rose butter dish - purple - very, very pretty

___ 282. N's Flute 13" vase - marigold - super neat vase



___ 283. Imperial paperweight - purple - super pretty & extremely rare, neat novelty piece!

___ 284. Wreath of Roses 9 pc. punch set w/Vintage interior - blue - scarce color

___ 285. Wreath of Roses 8 pc. punch set w/Vintage interior - marigold - nice

___ 286. Nippon 9" plate w/BW back - green - super pretty for this rare plate

___ 287. Fishscale & Beads 7" plate - purple - very pretty, small chip on base

___ 288. Isaac Benesch & Sons advertising ruffled bowl - amethyst

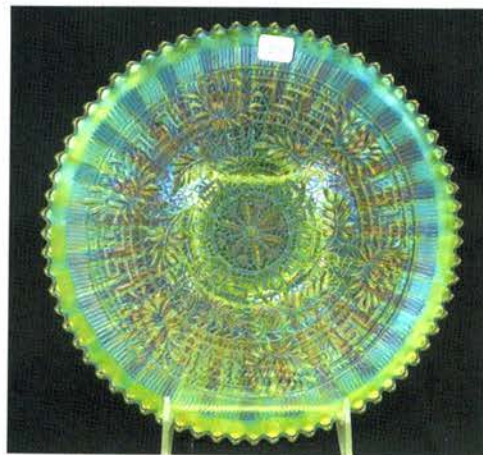


___ 289. Grape & Cable lg size ruffled fruit bowl - marigold - nice

___ 290. Diamond Lace 6 pc. water set - purple - pitcher cracked across bottom

___ 291. Embroidered Mums 9" plate - lime green - super pretty irid. on this rare plate

___ 292. Panther ftd ruffled master berry bowl - blue - super



___ 293. Inverted Thistle ftd whimsy dish - green - neat whimsy, signed NEARCUT

___ 294. Imperial Grape 7 pc. water set - marigold

___ 295. M'burg Courthouse IC shaped bowl - amethyst - radium, nice

___ 296. Stippled Peacocks ruffled bowl w/ribbed back - renninger blue - scarce color & highly desirable

___ 297. Rambler Rose water pitcher - purple - very nice

___ 298. Stippled Grape & Cable Variant 9" plate w/ribbed back - green - very pretty

___ 299. Wishbone & Spades 6" plate - purple - pretty

___ 300. 1910 Detroit Elks IC shaped bowl - amethyst - very scarce & super nice for these

___ 301. Enameled Freesia tankard water pitcher - marigold

___ 302. Scroll Embossed ruffled miniature compote - lavender - collector's favorite

___ 303. Butterfly bonbon w/threaded back - blue - hard to find with the threads!

___ 304. M'burg Perfection tumbler - amethyst

___ 305. Acorn Burrs 3 pc. water set - green - scarce, nice

___ 306. Acorn Burrs 7 pc. water set - purple - as nice of a set that I have seen

___ 307. Acorn Burrs 5 pc. water set - marigold - another nice one

___ 308. Imperial Grape water carafe - purple

___ 309. Petals ruffled compote - ice blue - very rare color, one has not sold for a long time



___ 310. Imperial match holder - purple - great novelty, very nice

___ 311. Orange Tree hatpin holder - green - rare color to find, very pretty, one foot has tiny polished spot

___ 312. Orange Tree hatpin holder - blue - another beauty, does have a minor rub on one foot



___ 313. Poinsettia milk pitcher - purple - stunning! a rare little pitcher

POINSETTIA
IMPERIAL

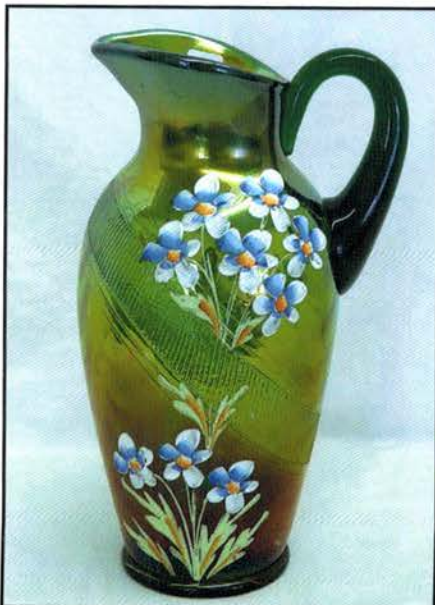


___ 314. Holly IC shaped bowl - celeste blue - super pretty w/ stretchy irid., very rare



___ 315. Enameled Forget Me Not tankard water pitcher on diagonal blank - green - rare pitcher, nice

ENAMELED FORGET ME NOT
FENTON



___ 316. Homestead chop plate - emerald green - very pretty example, rare color

___ 317. Homestead chop plate - purple - has pretty irid. with a unique look

___ 318. Homestead chop plate - white - stretchy irid., pretty

___ 319. Homestead chop plate - marigold - maybe one of the nicest I have seen in marigold



___ 320. Rustic 19" funeral vase w/plunger base - amethyst - super beautiful, rare



___ 321. Holly ruffled bowl - red - chips on edge

___ 322. Swan salt - purple - nice

___ 323. Swan salt - purple - nice

___ 324. Swan salt - marigold

___ 325. Pair of swan salts

___ 326. Covered Rabbit - cranberry flashed - signed Vallerysthal

___ 327. Pair of Fenton owls - lavender & purple - contemporary

___ 328. Lot of 3 Fenton moths or butterflies - one is hand decorated, contemporary

___ 329. Fenton Rabbit & Santa Clause - purple & green - contemporary

___ 330. Pair of swans, one covered - contemporary

___ 331. Pair of contemporary pieces

___ 332. Lot of 3 Fenton Chessie cats - red, aqua & decorated green not iridized - decorated one is a limited edition of 100

___ 333. Lot of 3 Fenton Chessie cats - red, aqua & white - contemporary

___ 334. Lot of 3 Fenton Chessie cats - red, aqua & powder blue - contemporary

___ 335. Lot of 2 Fenton Chessie cats - green, lavender - contemporary

THE TARKINGTON COLLECTION

THE FINAL AUCTION

2018 CARNIVAL GLASS AUCTION

SAT., SEPT. 15 9:30 A.M.
EMBASSY SUITES AIRPORT HOTEL,
KANSAS CITY, MO.

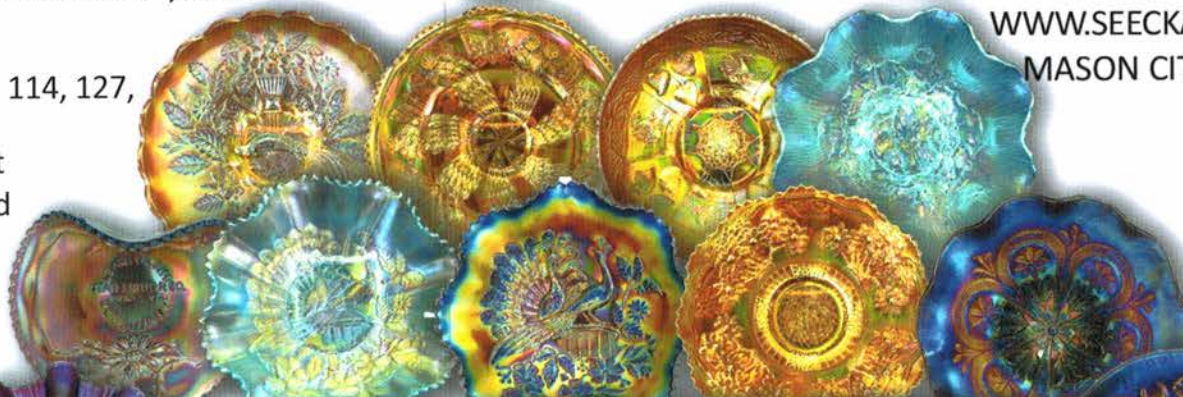
SEECK AUCTIONS
JIM & JAN SEECK

WWW.SEECKAUCTION.COM
MASON CITY, IA 50401



82, 105, 114, 127,

Lots not featured inside



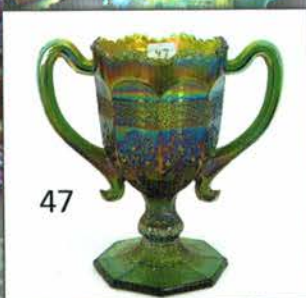
104, 149, 152, 175, 235

251

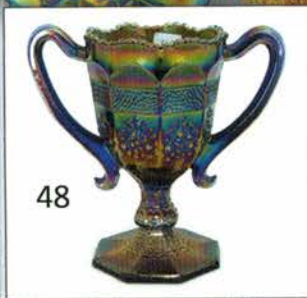
299

266

317



47



48



49



34



52



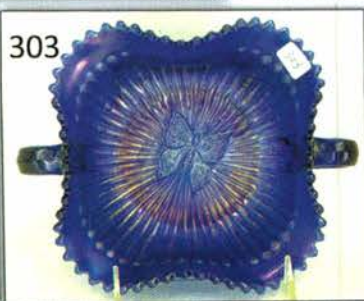
53



223



282



303



305



311



312