

International Carnival Glass  
Association Convention

# Carnival Glass 2016 Auction

117.



*The Hotstettler Collection*

Saturday, July 16  
9:30 a.m.

Open to the Public

Blue Gate Garden Inn  
Shipshewana, Indiana

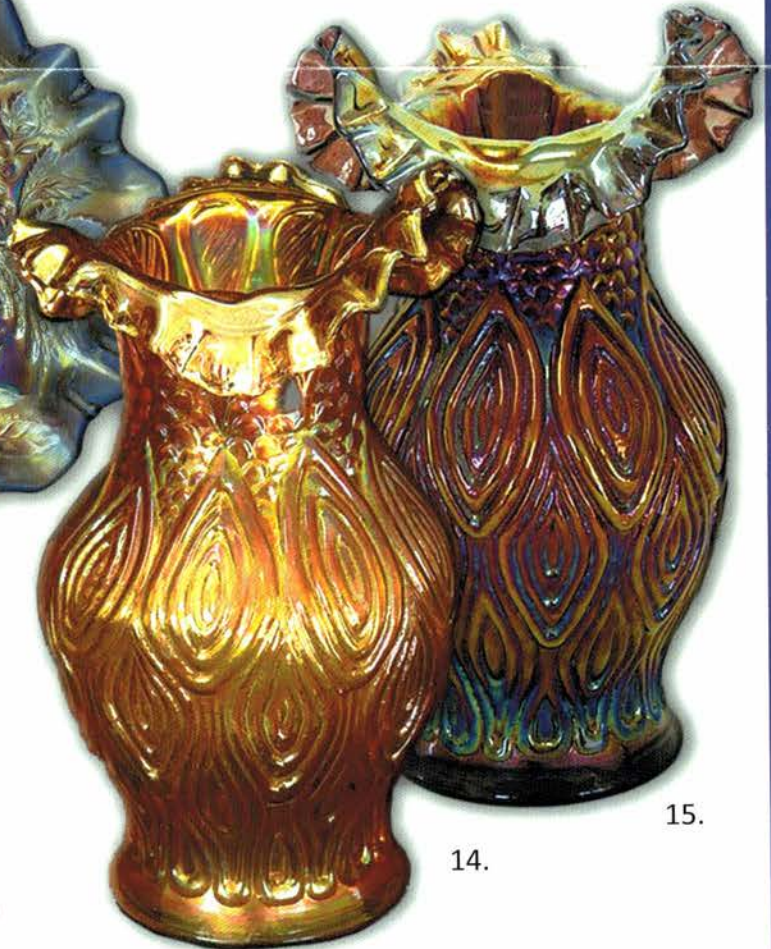


85.



61.

10.



14.

15.

**Seeck Auctions**  
Jim & Jan Seeck  
641-424-1116



**SATURDAY, July 16, 2016 — 9:30 A.M.**

Jim & Jan Seeck

**Blue Gate Garden Inn**

641-424-1116

**800 S. Van Buren St. Shipshewana, Indiana 46565**

**★NO BUYER'S PREMIUM -- OPEN TO THE PUBLIC**

INDIANA AUCTIONEER LICENSE # AU09100184

## *The Hostettler Collection*

**★Online absentee bidding closes, Friday, July 15 at 9 pm CST**

ABSENTEE BIDDING is available on-line through Auction Flex using our online catalog at [www.seeckauction.com](http://www.seeckauction.com)

**EMAIL: [jimjan@seeckauction.com](mailto:jimjan@seeckauction.com)**

*We are pleased to offer the Roger and Charolet Hostettler Collection of Carnival Glass at the ICGA convention auction this year. Being from Ohio and the Millersburg area, Roger and Charolet have favored the Millersburg Carnival Glass and have many beautiful pieces in their collection. Come to Shipshewana early or stay late as there are lots to do and see in this beautiful Amish area.*

**Visit the ICGA Website:** <http://www.internationalcarnivalglass.com>

If planning to stay at the hotel, reservations can be made by calling (260)768-7688.

If you have questions about the convention, contact President Brian Pitman at: 785-274-9105 or email: [bpitman@woodsland.com](mailto:bpitman@woodsland.com) or Roger and Cathy Dunham at: 217-370-7954.

**Terms:** Cash or Check, VISA, MasterCard and Discover accepted w/proper ID. **4% Clerking Fee** on all purchases made using credit cards. Announcements made day of sale take precedence over any printed information.

### **We have 3 options for ABSENTEE BIDDING for our live auctions:**

- 1) **WRITTEN OR PHONE:** If you **DO NOT** have internet access or access to our website, you can: Call us by phone to enter your bids at (641) 424-1116 **OR** By sending the numbers of the item(s) desired and the amount bid on each to: Seeck Auctions, PO Box 377, Mason City, Iowa 50402. (The mail has not been very dependable. We would prefer you call us with your bids rather than send them in a letter.)
  - All written and called in bids will be entered into the online catalog by us.
  - **Written and Phone Absentee Deadline:** Have all bids in by **Wednesday, July 13.**
- 2) **ONLINE CATALOG:** Enter your bids from our website into our online catalog through the Auction Flex system. When you get to the online catalog, you will need to login as a bidder. For the first time you will need to **set up your account** by creating a user name and password. This will include filling out a form with your name, address, etc. You will also need to **register for the auction** which will ask you to enter a valid credit card number. This card will be validated by a \$1 charge to your card. This will only happen once and you will now be able to enter bids through our online catalog by just logging in with your user name and password. You will use this user name and password for all our auctions. You are not required to pay by credit card if you are successful. This is just a safeguard for us if someone does not pay. We will let you know what you owe us through an email and you can decide how you would like to pay us.
  - *An exciting advantage of entering your bids online yourself*, is the option to be notified by email if you are outbid on an item. You will know when you are outbid on an item and you can increase your bid on that item or bid on something else. **There will be a cutoff date and time for entering your bids online, generally at 9 p.m. the night before each live auction.** After this time has passed, you will not be able to enter your bids from our online catalog.
  - *Remember*, that just because you are the high bidder in the online catalog, this does not mean you have won the item. Your bid will still need to beat the floor bidders and live phone bidders. This system will run our absentee bids just as we did before. You will still be able to buy the item lower than your online bid unless someone on the floor bids you higher.
- 3) **LIVE PHONE BIDDING:** Available on pieces with an estimated sale price of \$500 or more. If you would like to participate in live phone bidding, contact us by **the Thursday before the auction, July 14 for the first auction.** We will need to know the lot# and the phone number that you can be reached at on the day of the auction. We will also need your home phone number if different than the above number. Please call with questions: 641-424-1116.
  - **There is a \$7 handling charge for each successful bid. Shipping and insurance charges are additional.** bidders will be notified by phone/email if their bid(s) are successful. This will be done 1 - 3 days after the auction.
  - **If you do not receive an item that sold for less than your bid, assume we cancelled your bid because the item had a severe manufacture problem, damage or was not listed correctly.**

<b>BID INCREMENTS: \$1 - \$100/\$5</b>	<b>\$100 - \$200/\$10</b>	<b>\$200 - \$700/\$25</b>	<b>\$700 - \$1,500/\$50</b>
<b>\$1,500 - \$3,000/\$100</b>	<b>\$3,000 - \$5,000/\$250</b>	<b>\$5000+ Auctioneer's Discretion</b>	

- 35 1. Holly 3 in 1 edge bowl - aqua - nice, scarce color, tiny nick on collar base
- 65 2. Holly 3 in 1 edge bowl - blue - nice
- 90 3. Australian Swan ruffled sauce - dark
- 85 4. Australian Swan ruffled sauce - marigold - pretty
- 30 5. Leaf Chain IC shaped bowl - blue
- 75 6. Holly & Berry 7" ruffled bowl - purple - super pretty, tiny pinpoint on edge
- 30 7. M'burg Holly Sprig card tray shaped bonbon - green - satin
- 40 8. M'burg Holly Sprig bonbon - amethyst - radium
- 70 9. M'burg Holly Sprig hdd nappy - marigold - radium, nice
- 2000 10. M'burg Courthouse 3 in 1 edge bowl - lavender - satin irid., extremely rare in this shape, small manufacture split in edge
- 105 11. Fenton's Peacock at Urn 8 ruffled bowl - amethyst - nice
- 70 12. Fenton's Peacock at Urn 8 ruffled bowl - blue
- 30 13. Stippled Petal dome ftd ruffled bowl - peach opal - super pretty, typical nick on foot
- 9750 14. M'burg Mitered Ovals vase - marigold - super rare & super pretty example, a top piece in the sale!
- 10,000 15. M'burg Mitered Ovals vase - amethyst - another great piece, highly desirable, wow!
- 55 16. Lions IC shaped bowl - marigold
- 220 17. M'burg Hobnail rose bowl - amethyst -
- 90 18. M'burg Hobnail rose bowl - marigold
- 275 19. Australian Kingfisher master ruffled bowl - dark - nice
- 80 20. Australian Kingfisher ruffled sauce - dark - super
- 1050 21. N's Stippled Peacock at Urn master IC bowl - blue - fantastic, maybe on of the better ones out there!
- 1450 22. N's Stippled Peacock at Urn master IC bowl - marigold - another beauty with lots of pink
- 110 23. Bells & Beads crimped edge 7" bowl - purple - nice
- 400 24. Field Flower 7 pc. water set - purple - scarce
- 190 25. M'burg Little Stars 7" ruffled bowl - amethyst - satin, nice
- 140 26. M'burg Little Stars 7" ruffled bowl - green - satin
- 130 27. M'burg Little Stars 7" ruffled bowl - marigold - satin, nice
- 1450 28. Rustic 20" funeral vase w/plunger base - amethyst - super pretty, highly desirable
- 25 29. Constellation ruffled compote - white
- 320 30. M'burg Peacock master berry bowl - amethyst - radium
- 60 31. M'burg Peacock berry sauce - amethyst - radium, pretty
- 170 32. M'burg Peacock master berry bowl - marigold - radium, pretty
- 140 33. M'burg Peacock whimsy proof sauce - marigold - radium, pretty (missing part of leg)
- 70 34. M'burg Grape Wreath Variant 8" 3 in 1 edge bowl - amethyst - radium, nice
- 55 35. M'burg Grape Wreath Variant 8" crimped edge bowl - marigold - radium, nice
- 1600 36. M'burg Ohio Star vase - amethyst - very scarce vase, nice example
- 170 37. M'burg Blackberry Wreath crimped edge sauce - marigold - radium, super pretty
- 3425 38. M'burg Hanging Cherries 4 pc. table set - amethyst - rare set, handles on sugar have slight rubbing
- 200 39. M'burg Hanging Cherries 4 pc. table set - marigold - sugar base has chips on outside edge, butter bottom has manufacture open bubble inside rim of base
- 20 40. Strawberry ruffled bowl w/BW back - purple - pinpoint on base
- 20 41. Strawberry ruffled bowl w/BW back - marigold - pretty, pinpoint on point
- 2700 42. M'burg Deep Grape square shaped compote - amethyst - unusual shape, highly desirable, great piece
- 60 43. M'burg Grape Wreath 7" crimped edge bowl - amethyst - radium
- 80 44. M'burg Grape Wreath 7" crimped edge bowl - marigold - radium, pretty
- 140 45. Cherry Circles card tray shaped bonbon - powder blue - scarce color for this, nice
- 35 46. Vintage 9" ruffled bowl - green
- 15 47. Vintage 9" ruffled bowl - amethyst
- 15 48. Vintage 9" ruffled bowl - marigold
- 1500 49. Loganberry vase - purple - very scarce, desirable & nice
- 1050 50. Loganberry vase - amber - pretty example
- 225 51. Loganberry vase - green
- 570 52. Fruits & Flowers bonbon - marigold - nice
- 600 53. Horse Medallion ftd nut bowl - red - rare & desirable
- 375 54. Horse Medallion ftd nut bowl - aqua - scarce color, nice
- 110 55. Horse Medallion ftd nut bowl - blue
- 40 56. M'burg Blackberry Wreath 3 in 1 edge sauce - green - radium
- 145 57. Holly goblet shaped compote - red
- 25 58. M'burg Boutonniere ruffled compote - green - satin, nice
- 20 59. M'burg Boutonniere ruffled compote - amethyst - satin
- 25 60. M'burg Boutonniere ruffled compote - marigold - radium, nice
- 5500 61. M'burg Peacock 3 in 1 edge mystery bowl - blue - very rare color, satin & nice, a dandy piece of glass!
- 150 62. M'burg Peacock 3 in 1 edge mystery bowl - green - radium
- 180 63. M'burg Peacock 3 in 1 edge mystery bowl - amethyst - scarce
- 225 64. M'burg Peacock 3 in 1 edge mystery bowl - marigold - satin, nice
- 160 65. Diamond Lace 7 pc. water set - purple - one tumbler has chip on base
- 275 66. Plaid ruffled bowl - marigold - pretty example
- 1900 67. N's Town Pump - green - very rare color, highly desirable
- 425 68. N's Town Pump - purple - a collector's classic
- 300 69. M'burg Hanging Cherries 10" IC shaped bowl - aqua - satin, rare color for these, nice

- 55 70. M'burg Hanging Cherries 10" IC shaped bowl - amethyst - satin, chip on collar base, rubs on cherries
- 150 71. M'burg Hanging Cherries 10" IC shaped bowl - marigold - satin, pretty
- 110 72. M'burg Hobnail Swirl rose bowl - amethyst - satin
- 90 73. M'burg Hobnail Swirl rose bowl - marigold - satin, much wider than usual, smooshed down
- 170 74. Lions round bowl - blue - nice
- 425 75. N's Bushel Basket - sapphire - rare color
- 35 76. N's Bushel Basket - blue
- 55 77. N's Bushel Basket - marigold - pretty
- 90 78. Australian Swan master bowl - marigold - pretty
- 900 79. M'burg Hanging Cherries water pitcher - amethyst - rare pitcher
- 850 80. M'burg Hanging Cherries water pitcher - marigold - rare pitcher & pretty
- 160 81. M'burg Hanging Cherries tumbler - marigold - nice
- 130 82. M'burg Hanging Cherries tumbler - green - very nice
- 130 83. Ten Mums ruffled bowl - amethyst - very pretty
- 40 84. Basketweave Open Edge 2 sides up basket - lime green - has marigold overlay
- 2400 85. M'burg Hobnail jardinière - amethyst - very unusual piece & rare, super neat, I believe this was made out of the water pitcher mold with no handle attached
- 45 86. Heart & Vine 3 in 1 edge bowl - marigold - nice
- 130 87. M'burg Leaf & Little Flowers sherbet shaped compote - green - radium
- 130 88. M'burg Leaf & Little Flowers sherbet shaped compote - amethyst - radium, nice
- 160 89. M'burg Leaf & Little Flowers sherbet shaped compote - marigold - radium, pretty
- 170 90. N's Peacock at the Fountain water pitcher & 1 tumbler - purple - pitcher is nice
- 15 91. Vintage 9" IC shaped bowl - marigold
- 400 92. M'burg Strawberry crimped edge ruffled compote - marigold - radium, very rare shape for these
- 70 93. M'burg Hanging Cherries 7" IC shaped bowl - green - satin, nice
- 65 94. M'burg Hanging Cherries 7" IC shaped bowl - amethyst - satin
- 40 95. M'burg Hanging Cherries 7" IC shaped bowl - marigold - satin, nice
- 160 96. Hearts & Flowers ruffled compote - aqua opal - very pretty, 2 tiny nicks around base
- 75 97. Hearts & Flowers ruffled compote - white - nice
- 50 98. Hearts & Flowers ruffled compote - marigold - nice
- 350 99. M'burg Many Stars crimped edge ruffled bowl w/six point star - amethyst - radium, very rare shape, small chip on back of one ruffle
- 95 100. Captive Rose card tray shaped bonbon - amethyst
- 75 101. Captive Rose bonbon - blue - irid. backside only
- 275 102. M'burg Peacock at Urn 7" 3 in 1 edge shotgun bowl - green - radium, very nice, always been one of my favorites
- 375 103. M'burg Peacock at Urn 7" 3 in 1 edge shotgun bowl - amethyst - radium, very nice
- 30 104. April Showers 10" vase - blue
- 45 105. M'burg Blackberry Wreath 10" ruffled bowl - marigold - radium
- 170 106. M'burg Peacock at Urn IC shaped Mystery bowl - green - radium, very nice
- 160 107. M'burg Peacock at Urn IC shaped Mystery bowl - amethyst - radium, nice
- 200 108. M'burg Peacock at Urn IC shaped Mystery bowl - marigold - satin
- 15 109. Question Mark bonbons (2) - purple
- 325 110. M'burg Hobnail Swirl 10" vase - green - nice
- 325 111. M'burg Hobnail Swirl 9" vase - amethyst - nice
- 50 112. M'burg Hobnail Swirl 12" vase - marigold - excess glass off of one point
- 150 113. Windmill milk pitcher - smoke - scarce color
- 400 114. Australian Thunderbird master ruffled bowl - dark
- 140 115. Diving Dolphins ftd ruffled round bowl - amethyst - could call this lavender
- 15 116. M'burg Blackberry Wreath ruffled sauce - marigold - satin, nice
- 2800 117. Tree Trunk ruffled jardinière - purple - super cool piece, with super irid. for these, unfortunately cracked around the base, an extreme rarity to set on your shelf!
- 40 118. Waterlily ftd ruffled master berry bowl - marigold - nice
- 425 119. M'burg Strawberry Wreath 8" square shaped bowl - amethyst - radium, nice
- 55 120. Leaf & Beads rose bowl - marigold - pretty
- 550 121. M'burg Hanging Cherries square shaped compote - amethyst - satin, very rare whimsy shape for these, very nice
- 20 122. Sunflower spt ftd ruffled bowl - marigold
- 90 123. Round Up low ruffled bowl - amethyst - has a root beer color
- 350 124. M'burg Many Stars 3 in 1 edge bowl w/6 point star - marigold - satin, scarce bowl
- 475 125. Rose Show 9" plate - blue - nice, extremely minor rough spot on top of rose
- 60 126. M'burg Holly Sprig Variant crimped edge 8" bowl - green - radium, nice, scarce
- 50 127. M'burg Holly Sprig Variant crimped edge 8" bowl - marigold - radium, also scarce
- 70 128. Grape & Gothic Arches 5 pc. water set - marigold - small rough spot on handle of pitcher
- 40 129. Holly ruffled bowl - powder blue - nice
- 20 130. Holly ruffled bowl - blue
- 15 131. Holly ruffled bowl - marigold
- 375 132. M'burg Big Fish 3 in 1 edge bowl - amethyst - satin, very rare bowl
- 350 133. M'burg Big Fish 3 in 1 edge bowl - marigold - satin, nice, scarce
- 60 134. M'burg Holly Sprig 6" deep crimped edge sauce - green - radium, nice, tiny nick on edge, probably happened when crimping
- 65 135. Orange Tree loving cup - marigold
- 325 136. M'burg Peacock 6" plate - amethyst - satin, nice
- 50 137. M'burg Rays & Ribbons 3 in 1 edge bowl - marigold - radium, pretty

- 110 138. Kittens toothpick - marigold  
10 139. Vintage 10" IC shaped bowl - blue - silvery  
20 140. Raspberry ruffled compote - marigold  
525 141. **M'burg Strawberry Wreath tri-cornered 10" crimped edge bowl - amethyst - radium, very rare shape for these**  
120 142. Floral & Grape 5 pc. water set - amethyst  
25 143. Floral & Grape water pitcher - marigold  
55 144. Orange Tree 6 ruffled bowl - white - pretty irid.  
350 145. Poppy Show 9" plate - blue - very pretty, small chip on flat of base, small nick on edge  
65 146. M'burg Hanging Cherries 3 in 1 edge 8" bowl - amethyst - radium, pinpoint on ruffle  
15 147. Covered Hen on Nest - blue - small nick on base edge  
130 148. **M'burg Peacock 3 in 1 edge sauce - amethyst - satin & nice, this is a cutie!**  
300 149. **M'burg Peacock 3 in 1 edge sauce - marigold - satin, super, another dandy piece of Millersburg**  
45 150. Chrysanthemum ruffled bowl - green  
20 151. Chrysanthemum ruffled bowl - marigold  
409 152. **M'burg Poppy round compote - green - very scarce, radium, nice**  
400 153. **M'burg Poppy round compote - amethyst - radium, scarce**  
400 154. **M'burg Poppy round compote - marigold - radium, scarce, dark for these & pretty**  
10 155. Dugan Cherries ftd ruffled bowl - amethyst - missing irid. in center  
35 156. Dugan Cherries ftd ruffled bowl - peach opal  
625 157. **M'burg Seacoast pin tray - amethyst - always a desirable piece**  
85 158. Grape Arbor 7 pc. tankard water set - marigold - two tumblers have chips on base, pitcher nice  
95 159. M'burg Primrose ruffled bowl - green - radium, nice  
10 160. Leaf Chain 7" plate - marigold  
400 161. **Australian Kangaroo ruffled master bowl - dark**  
120 162. **Australian Kangaroo ruffled sauce - marigold - pretty**  
120 163. Grape & Cable cvd compote - purple - Carnival Classic  
35 164. M'burg Holly Sprig 7" ruffled bowl - amethyst - radium  
675 165. **M'burg Nesting Swan whimsy crimped edge deep bowl - marigold - radium, nice, small chip behind one ruffled, rare, rare**  
80 166. Dragon & Lotus ruffled bowl - blue  
775 167. **M'burg Hobnail butter dish - marigold - super rare item & nice, great piece!**  
20 168. Vintage CRE bowl - amethyst  
30 169. Vintage CRE bowl - blue  
325 170. **M'burg Courthouse IC shaped bowl - amethyst - radium, small nick on seam of base**  
15 171. Caroline CRE round bowl - peach opal  
95 172. Rustic 15" mid size vase - green  
375 173. **Zippered Loop 7 1/2" kerosene lamp - marigold - 4 1/4" base, nice**  
25 174. M'burg Peacock Tail Variant ruffled compote - green - radium  
35 175. M'burg Peacock Tail Variant ruffled compote - amethyst - radium, nice  
20 176. M'burg Peacock Tail Variant ruffled compote - marigold  
70 177. Grape & Cable small size ftd fruit bowl - purple - nice  
90 178. **M'burg Holly Sprig 8" tri-cornered bowl - marigold - radium, pretty**  
60 179. Grape & Cable sweetmeat - purple  
775 180. **N's Peacock at Urn ruffled 10" bowl - marigold - super pretty, made from the IC bowl**  
85 181. Dragon & Lotus 3 in 1 edge bowl - amethyst  
325 182. **M'burg Whirling Leaves crimped edge, tri-cornered bowl - marigold - radium, nice, scarce shape**  
25 183. Acorn deep round bowl - aqua  
160 184. M'burg Fleur de Lis deep round bowl - amethyst - radium  
95 185. Raindrops dome ftd deep ruffled bowl - peach opal  
190 186. **M'burg Peacock at Urn master IC shaped bowl - amethyst - satin, pretty**  
140 187. **M'burg Peacock at Urn master IC shaped bowl - marigold - satin, nice**  
25 188. Diamond Rib 10" vase - green AND 13" vase - amethyst  
625 189. M'burg Rays & Ribbon deep round bowl - amethyst - radium, super, some would call this the blank shape  
10 190. N's Grape Leaves ruffled bowl - marigold  
110 191. M'burg Rosalind 10" ruffled bowl - green - satin, nice  
140 192. M'burg Diamonds tumblers - 3 amethyst, 1 marigold - marigold has small buffed chip on base  
35 193. Grape & Cable 11" ruffled bowl - marigold - nice  
620 194. **Dozen Roses ftd bowl - green - yes, green, very rare color for these, not many known, chips on edge, typical foot chips**  
40 195. Strawberry 9" plate w/ plain back - marigold - nice  
160 196. **M'burg Peacock at Urn ruffled Mystery bowl - amethyst - satin, scarce**  
20 197. Wishbone ftd ruffled bowl - marigold  
65 198. M'burg Nesting Swan ruffled bowl - amethyst - satin, small chip on back of edge  
90 199. M'burg Nesting Swan ruffled bowl - marigold - radium, pretty, couple of chips on edge  
350 200. **Butterfly & Berry 7 pc. water set - blue - very nice pitcher, scarce set**  
160 201. M'burg Little Stars 9" IC shaped bowl - marigold - satin, rare size  
35 202. M'burg Grape Wreath Variant 8" 3 in 1 edge bowl - amethyst - radium  
75 203. Brooklyn Bridge 10 ruffled bowl - marigold - nice  
375 204. **M'burg Hobnail Swirl spittoon - amethyst - always in demand**  
15 205. Persian Medallion 7" ruffled bowl - amethyst - iridized on back side only  
250 206. **M'burg Bullseye & Loop 10 1/2" vase - amethyst - scarce**  
35 207. Holly IC shaped bowl - marigold  
140 208. Feathered Serpent 10" ruffled bowl - blue - nice  
50 209. **M'burg Zig Zag crimped edge ruffled bowl - marigold - radium, spot of epoxy on base**  
40 210. Maple Leaf creamer & cvd butter dish - purple - chip on edge of butter dish base

- 60 211. M'burg Hobnail Swirl rose bowl - marigold
- 120 212. **M'burg Peacock 10" ruffled bowl - amethyst - radium, scarce**
- 95 213. M'burg Hanging Cherries deep round 10" bowl - green - satin, cherries missing irid.
- 120 214. Good Luck PCE bowl w/ribbed back - blue
- 40 215. Good Luck PCE bowl w/BW back - marigold
- 25 216. Ribbon Tie 3 in 1 edge bowl - amethyst
- 25 217. Ribbon Tie 3 in 1 edge bowl - marigold - nice
- 700 218. **M'burg Zig Zag tri-cornered crimped edge bowl - amethyst - radium, super, a beauty**
- 10 219. Leaf Chain 6 ruffled bowl - marigold
- 50 220. M'burg Hanging Cherries deep round sauce - marigold - radium
- 70 221. Stippled Three Fruits 9" plate w/ribbed back - purple - silvery
- 100 222. Stippled Three Fruits 9" plate w/ribbed back - marigold
- 35 223. Peacock Tail tri-cornered sauce - amethyst
- 65 224. M'burg Rosalind 10" 3 in 1 edge bowl - marigold - satin, nice
- 15 225. Holly 6 ruffled bowl - blue - manufacture roughness on base
- 550 226. **M'burg Seaweed 9" ruffled bowl - marigold - satin, hard to find in this size**
- 35 227. M'burg Blackberry Wreath 7" 3 in 1 edge bowl - amethyst - satin, nice
- 80 228. Stippled Rays 7" ruffled bowls (2) - vaseline
- 15 229. Corinth 9" JIP vase - amethyst
- 425 230. **M'burg Trout & Fly IC shaped bowl - marigold - satin, pretty, scarce**
- 55 231. Grape Arbor ruffled hatshape - blue - made from tumbler
- 50 232. M'burg Blackberry Wreath 9" 3 in 1 edge bowl - amethyst - satin
- 15 233. Blackberry Open Edge 2 sides up basket - blue
- 10 234. Birds & Cherries bonbon - marigold
- 235 235. **N's Peacock at Urn chop plate - purple - nice plate, minor nick on wing of bird**
- 40 236. Fenton Peacock at Urn goblet shaped compote - lime green - manufacture burn spot on top edge
- 75 237. M'burg Little Stars 7" ruffled bowl - amethyst - satin
- 50 238. M'burg Grape Wreath 7" IC shaped bowl - marigold - radium, pretty
- 20 239. Three Fruits PCE bowl w/plain back - purple
- 35 240. M'burg Blackberry Wreath 9" ruffled bowl - marigold - satin, nice
- 130 241. Horse Medallion JIP ftd bowl - green - scarce color
- 180 242. Australian Kookaburra ruffled sauce - marigold - pretty
- 375 243. **N's Corn vase w/stalk base - purple - scarce**
- 10 244. Acorn 7" ruffled bowl - marigold
- 130 245. **M'burg Strawberry ruffled compote - green - radium & pretty, a nice one!**
- 135 246. **M'burg Strawberry ruffled compote - amethyst - radium & pretty**
- 160 247. **M'burg Strawberry ruffled compote - marigold - radium, dark, super**
- 300 248. **M'burg Tulip Scroll 7" squatty vase - amethyst - scarce vase, nice**
- 70 249. Panther round master ftd berry bowl - marigold - nice
- 45 250. M'burg Peacock IC sauce - amethyst - satin
- 25 251. Stag & Holly lg size IC shaped ftd bowl - marigold
- 725 252. **M'burg Peacock at Urn giant compote - green - very pretty satin irid., rare & desirable**
- 650 253. **M'burg Peacock at Urn giant compote - amethyst - satin & nice, another rarity**
- 15 254. Peacock & Grape ruffled bowl - marigold
- 275 255. Campbell & Beesley Co. Spring Opening 1911 handgrip advertising plate - amethyst - rare, irid. missing in center
- 15 256. Stream of Hearts ruffled compote - marigold
- 120 257. **M'burg Trout & Fly 3 in 1 edge bowl - amethyst - satin, silvery**
- 180 258. **M'burg Trout & Fly 3 in 1 edge bowl - marigold - satin, nice**
- 55 259. Lotus & Grape ruffled bowl - green
- 350 260. **N's Peacock at Urn 6" plate - marigold - very rare to find, nice**
- 80 261. N's Peacock at Urn IC sauce - blue
- 95 262. N's Peacock at Urn IC sauce - marigold - very pretty
- 950 263. **M'burg Hanging Cherries milk pitcher - amethyst - very rare, hardly ever sold, mold roughness on base, nice**
- 30 264. Kittens 4 sides up dish - marigold
- 90 265. Grape & Cable hatpin holder - purple
- 10 266. Lot of 3 Fenton ruffled sauces - marigold
- 300 267. **Stippled Three Fruits Medallion spt ftd ruffled bowl - aqua opal - pastel & nice**
- 40 268. M'burg Blackberry Wreath 7" ruffled bowl - amethyst - radium
- 10 269. Fenton's Fine Rib 12" vase - lime green - scarce color
- 25 270. Fenton's Fine Rib 13" vase - amethyst - also a hard color to find
- 140 271. **M'burg Leaf & Little Flowers ruffled compote - green - radium, nice**
- 30 272. Dragon & Lotus 3 in 1 edge bowl - marigold
- 30 273. Fenton's Peacock at Urn 3 in 1 edge bowl - amethyst - sharp point has been slightly filed
- 325 274. **M'burg Hobnail spittoon - marigold - very nice example**
- 20 275. N's Stippled Rays 10" PCE bowl - purple
- 200 276. **Stippled Fruits & Flowers 7" plate - marigold - nice**
- 70 277. Peacocks 9" plate w/ribbed back - purple - silver & gold irid.
- 50 278. M'burg Holly Sprig 7" crimped edge bowl - amethyst - radium, nice
- 55 279. Fanciful low ruffled bowl - purple
- 275 280. **M'burg Peacock at Urn 7 pc. berry set - marigold - satin, scarce**
- 150 281. Isaac Benesch & Sons advertising ruffled bowl - amethyst - nice
- 15 282. Lot of 3 compotes - marigold
- 200 283. Singing Birds water pitcher - purple - scarce
- 10 284. Bullseye & Beads 10" vase - marigold
- 35 285. Peacock & Grape ruffled bowl - amethyst - nice
- 15 286. Pony 6 ruffled bowl - marigold

- 260 287. Fenton Peacock at Urn 9" plate - blue - pretty  
150 288. Fenton Peacock at Urn 9" plate - marigold  
40 289. M'burg Blackberry Wreath IC shaped sauce - amethyst - radium, nice  
50 290. M'burg Peacock at Urn master IC shaped bowl - amethyst - radium, hard to find this in radium, chip on flat of base, chip on edge  
25 291. M'burg Blackberry Wreath 7" IC shaped bowl - marigold - radium  
525 292. Stippled Grape & Cable Variant 9" plate w/ribbed back - marigold - very pretty, very rare, quite a bit of pink & yellow  
45 293. M'burg Blackberry Wreath 10" 3 in 1 edge bowl - green - satin  
60 294. Mikado round compote - marigold  
350 295. Greek Key 9" plate w/BW back - purple - scarce plate  
65 296. Diamond Points 7" squatty vase - white - super nice, scarce size  
40 297. Diamond Points 8 1/2" vases (2) - amethyst  
90 298. M'burg Peacock IC shaped sauce - green - radium, very hard to find  
50 299. M'burg Peacock IC shaped sauce - marigold - satin  
250 300. M'burg Seaweed 10" ruffled bowl - amethyst - satin  
100 301. Fenton Peacock at Urn ruffled bowl - green - nice  
2900 302. M'burg Courthouse 3 in 1 edge bowl - amethyst - satin, yes, a second one, these are so rare, can't believe he has 2  
75 303. Peacock Tail CRE bowl - marigold  
800 304. 1910 Detroit Elks ruffled bowl - amethyst - super pretty  
20 305. Windmill pickle dish - marigold  
600 306. M'burg Long Thumbprint Variant 7" squatty vase - amethyst - couple of minor pinpoint on bottom, can't say I've seen another vase like this  
180 307. Ten Mums 3 in 1 edge bowl - green  
160 308. Kittens cereal bowl - marigold - has two sets of kittens  
35 309. Windmill ruffled bowl - purple  
225 310. Stippled Rays 7" IC shaped bowl - red - scarce  
80 311. Fine Cut & Roses rose bowl - purple - nice  
30 312. Three Fruits ruffled bowl w/plain back - marigold - has a slight smokey look to it  
55 313. Grape & Cable 9" plate w/plain back - purple - nice  
20 314. Two Flowers spt ftd round bowl - blue  
130 315. Horse Medallion 7" plate - marigold - nice  
50 316. Australian Kingfisher ruffled sauce - dark - nice  
25 317. M'burg Blackberry Wreath 3 in 1 edge bowl - green - radium  
90 318. Stippled Petal CRE dome ftd bowl - purple - nice  
600 319. Embroidered Mums ruffled bowl w/ribbed back - ice blue - scarce, nice  
80 320. Raspberry milk pitcher - purple  
30 321. M'burg Cosmos IC shaped sauce - green - radium  
20 322. Double Stemmed Rose dome ftd ruffled bowl - purple  
25 323. Flute toothpick - purple  
10 324. Vintage lg size ruffled compote - green  
100 325. Holly goblet shaped compote - green - scarce
- 50 326. M'burg Grape Wreath Variant 8" ruffled bowl - amethyst - radium  
240 327. Poppy Show vase - purple - extremely rare color & fantastic quality iridescence, minor small spot of epoxy on top edge  
10 328. N's Grape Leaves ruffled bowl - marigold  
75 329. M'burg Little Stars 7" ruffled bowl - amethyst - satin  
20 330. Hearts & Flowers ruffled compote - marigold  
80 331. M'burg Peacock 3 in 1 edge sauce - amethyst - radium, pretty, minor peeling off top of one ruffle  
325 332. N's Town Pump - green - rare color, large chip on top edge, great shelf piece  
50 333. Grape & Cable sweetmeat - purple  
75 334. M'burg Hobnail Swirl rose bowl - marigold - nice  
30 335. M'burg Boutonniere ruffled compote - amethyst  
2300 336. M'burg 1910 Detroit Elks 3 in 1 edge bowl - amethyst - radium & nice, an extreme rarity, Wow!  
5 337. Lot of 4 Imperial Grape tumblers - marigold - two have damage on base  
20 338. Lot of 3 Raspberry tumblers - purple  
15 339. Grape & Cable tumblers - 2 green, 1 purple  
45 340. M'burg Marilyn tumbler - amethyst  
45 341. Harvest Flower tumbler - marigold - nice  
20 342. Grape Arbor tumbler - purple - nice  
25 343. Dandelion tumbler - purple  
25 344. Lot of 4 tumblers - Grapevine Lattice has chip on base  
72 345. Memphis punch cup - green AND Stork & Rushes mug - marigold  
20 346. Lot of 4 compotes  
5 347. Coin Spot 9" 3 in 1 edge bowl - marigold  
10 348. N's Thin Rib 11" vase - russet AND Beauty Bud vase - amethyst  
20 349. Lot of 3 vases - marigold  
10 350. Lot of 4 pieces - marigold  
5 351. Persian Medallion 6" plate - marigold AND Leaf Rays nappy - peach opal  
150 352. Moon & Stars rose bowl - red - signed Robert Hansen  
50 353. Wreathed Cherry spooner - red - signed Robert Hansen  
80 354. N's Bushel Basket - aqua opal - nice, crack in handle  
45 355. Orange Tree Orchard water pitcher - blue - cracked handle  
    356. Diamond Lace water pitcher - purple - super pretty, crack around base  
15 357. Lot of 5 pieces marigold - all with damage  
20 358. Lot of 3 pieces green - all with damage  
55 359. Lot of 4 pieces purple & blue - all with damage

SEECK AUCTIONS  
 P.O. BOX 377  
 MASON CITY, IA 50401

PRESORTED  
 FIRST CLASS MAIL  
 US POSTAGE  
 PAID  
 MAIL EXPEDITORS



42.

**2016 CARNIVAL  
 GLASS AUCTION**

Sat., July 16 9:30 a.m.  
 Blue Gate Garden Inn  
 Shipshewana, Indiana

T4 P1 138  
 LEE MARKLEY  
 BOX 306  
 MENTONE IN 46539-0306



22.



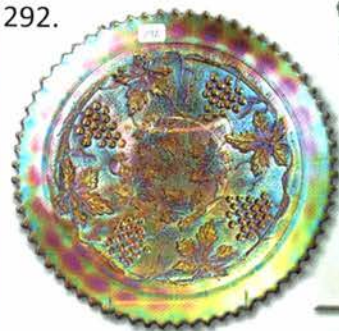
260.



336.



218.



292.



121.



36.



306.



21.



304.



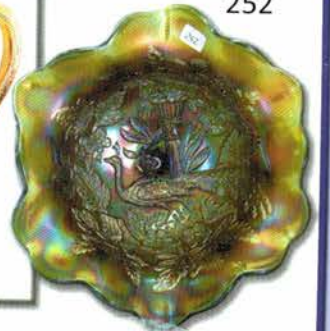
28.



67.



80.



252