

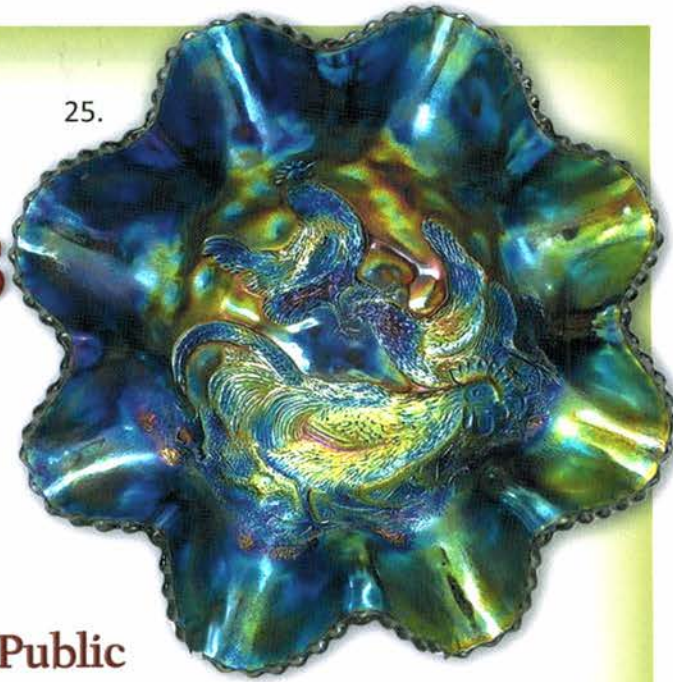
Lincoln Land Carnival Glass
Club Convention

Carnival Glass 2016 Auction

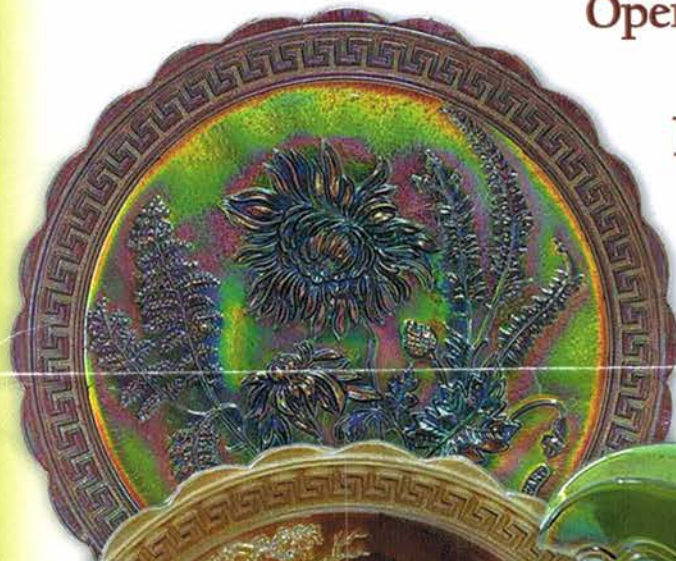
Saturday, June 4
9:30 a.m.

Open to the Public

Best Western Milwaukee Airport
Hotel and Convention Center
Milwaukee, Wisconsin



25.



10.



270.



30.

75.



50.

Seeck Auctions
Jim & Jan Seeck
641-424-1116



SATURDAY, JUNE 4, 2016 — 9:30 A.M.

Jim & Jan Seeck

**Best Western Milwaukee Airport Hotel
and Convention Center**

641-424-1116

5105 South Howell Avenue Milwaukee, Wisconsin 53207

★ Open to the Public Preview: Friday Evening
Online absentee bidding closes, Friday, June 3 at 9 pm CST

ABSENTEE BIDDING is available on-line through Auction Flex using our online catalog at www.seeckauction.com

★ **NO BUYER'S PREMIUM -- EMAIL: jimjan@seeckauction.com**

Offering quality and fine pieces from diverse patterns and forms..

Lodging

Lincoln Land Club Convention info: Contact President Jack Targonski at jackt3@rcn.com
If staying at the Best Western Hotel, for reservations please call: (414)769-2100

Terms: Cash or Check, VISA, MasterCard and Discover accepted w/proper ID. 4% Clerking Fee on all purchases made using credit cards. Announcements made day of sale take precedence over any printed information.

We have 3 options for ABSENTEE BIDDING for our live auctions:

Sales Tax will be charged, please bring your tax-exempt numbers.

1) **WRITTEN OR PHONE:** If you **DO NOT** have internet access or access to our website, you can: Call us by phone to enter your bids at (641) 424-1116 **OR** By sending the numbers of the item(s) desired and the amount bid on each to: Seeck Auctions, PO Box 377, Mason City, Iowa 50402. (The mail has not been very dependable. We would prefer you call us with your bids rather than send them in a letter.)

- All written and called in bids will be entered into the online catalog by us.
- **Written and Phone Absentee Deadline:** Have all bids in by **Wednesday, June 1.**

2) **ONLINE CATALOG:** Enter your bids from our website into our online catalog through the Auction Flex system. When you get to the online catalog, you will need to login as a bidder. For the first time you will need to **set up your account** by creating a user name and password. This will include filling out a form with your name, address, etc. You will also need to **register for the auction** which will ask you to enter a valid credit card number. This card will be validated by a \$1 charge to your card. This will only happen once and you will now be able to enter bids through our online catalog by just logging in with your user name and password. You will use this user name and password for all our auctions. You are not required to pay by credit card if you are successful. This is just a safeguard for us if someone does not pay. We will let you know what you owe us through an email and you can decide how you would like to pay us.

- *An exciting advantage of entering your bids online yourself*, is the option to be notified by email if you are outbid on an item. You will know when you are outbid on an item and you can increase your bid on that item or bid on something else. **There will be a cutoff date and time for entering your bids online, generally at 9 p.m. the night before each live auction.** After this time has passed, you will not be able to enter your bids from our online catalog.
- *Remember*, that just because you are the high bidder in the online catalog, this does not mean you have won the item. Your bid will still need to beat the floor bidders and live phone bidders. This system will run our absentee bids just as we did before. You will still be able to buy the item lower than your online bid unless someone on the floor bids you higher.

3) **LIVE PHONE BIDDING:** Available on pieces with an estimated sale price of \$500 or more. If you would like to participate in live phone bidding, contact us by **the Thursday before the auction, June 2.** We will need to know the lot# and the phone number that you can be reached at on the day of the auction. We will also need your home phone number if different than the above number. Please call with questions: 641-424-1116.

- **There is a \$7 handling charge for each successful bid. Shipping and insurance charges are additional.** bidders will be notified by phone/email if their bid(s) are successful. This will be done 1 - 3 days after the auction.
- **If you do not receive an item that sold for less than your bid, assume we cancelled your bid because the item had a severe manufacture problem, damage or was not listed correctly.**

BID INCREMENTS: \$1 - \$100/\$5 \$100 - \$200/\$10 \$200 - \$700/\$25 \$700 - \$1,500/\$50
 \$1,500 - \$3,000/\$100 \$3,000 - \$5,000/\$250 \$5000+ Auctioneer's Discretion

- ___ 1. Vintage hdd bonbon - amethyst
- ___ 2. Vintage 7" IC shaped bowl - amethyst
- ___ 3. Persian Garden 6" plate w/Pool of Pearls back - white - nice
- ___ 4. Fishscale & Beads 7" plate - marigold
- ___ **5. Diamond Points 8" vase - blue - absolutely super**
- ___ 6. Diamond Points 10" vase - purple - nice
- ___ 7. Diamond Points 9" vase - green - very pretty
- ___ 8. Imperial Jewels 5 1/2" vase - purple - has Iron Cross mark
- ___ 9. Imperial Jewels 6" bowl - purple - has Iron Cross mark
- ___ **10. NUART Chrysanthemum chop plate - purple - super pretty & very rare, mold work is fantastic, because of good mold work, inner rim has a little bit of roughness**
- ___ **11. NUART Chrysanthemum chop plate - amber - rare color & super, a beauty**
- ___ **12. NUART Chrysanthemum chop plate - marigold - nice, almost a radium type irid.**
- ___ **13. Chrysanthemum chop plate - smoke - super stretchy irid., very rare, nice!!**
- ___ **14. Chrysanthemum chop plate - honey amber - very pretty irid., slightly stretchy, large burst in base**
- ___ **15. Chrysanthemum chop plate - white - super pretty irid., just slightly stretchy**
- ___ 16. Heavy Grape 8" plate - purple - nice
- ___ 17. Tree Trunk 10" vase - blue - nice
- ___ 18. Tree Trunk 10 1/2" vase - green - super!
- ___ 19. Tree Trunk 9" vase - purple - another pretty one!
- ___ 20. Tree Trunk 11" vase - marigold - nice
- ___ **21. Central Shoe Store advertising ruffled bowl - amethyst - very nice, hard one to get**
- ___ 22. Stippled Grape & Cable bonbon - marigold - pretty pastel irid.
- ___ 23. Heavy Grape chop plate - purple - nice
- ___ 24. Heavy Grape chop plate - green - silver irid.
- ___ **25. Farmyard 8 ruffled bowl - purple - absolutely super, beautiful with blue iridescence, rare & desirable**
- ___ 26. Miniature Morning Glory 5 1/4" vase - green - scarce to find green ones this short
- ___ 27. Miniature Morning Glory 3 3/4" vase - marigold - extremely short for these, has a 4" mouth, cool
- ___ **28. Stippled Strawberry ruffled bowl w/ribbed back - lime green - very rare bowl & pretty**
- ___ 29. Stippled Strawberry ruffled bowl w/ribbed back - marigold - pretty, minor roughness on one point
- ___ **30. Poppy Show vase - purple - super pretty iridescence on this rare piece! Purple is so tough to find**
- ___ **31. Poppy Show vase - smoke - another rare beauty with super pretty iridescence**
- ___ 32. God & Home tumbler - blue - pretty even irid.
- ___ 33. Grape & Cable Variant 9" plate w/BW back - purple
- ___ **34. 1910 Detroit Elks 7" ruffled bowl - blue - very pretty example for these**
- ___ 35. Pair of 11" vases - marigold
- ___ **36. Peacocks PCE bowl w/ribbed back - aqua opal - super, super pretty & extremely rare, large area of epoxy along edge, not sure what was wrong**
- ___ 37. Peacock & Grape ruffled bowl - blue - super pretty
- ___ 37a. Peacock & Grape ruffled bowl - marigold - dark, pretty
- ___ **38. Good Luck 9" plate w/ribbed back - green - scarce, nice**
- ___ 39. Good Luck 9" plate w/BW back - purple - scarce
- ___ 40. Iris Buttermilk goblet AND Imperial Grape water goblet - marigold
- ___ **41. Poppy Show 9" plate - blue - very nice plate, pinpoint on base**
- ___ 42. Thin Panel 5 3/4" ruffled top vase - purple - unusual shape
- ___ 43. Thin Panel 4 1/2" ruffled top vase - peach opal - another neat vase
- ___ **44. M'burg Courthouse IC shaped bowl - amethyst - radium, nice**
- ___ **45. M'burg Courthouse ruffled bowl - amethyst - radium, nice**
- ___ 46. Lot of 8 M'burg Hobstar & Feather punch cups - marigold
- ___ 47. Lot of 4 Luster Rose tumblers - purple - pretty
- ___ 48. Imperial Grape ruffled bowl - purple - lots of blue irid.
- ___ 49. Two Flowers spt ftd round bowl - blue - minor nick on cleat
- ___ **50. Hearts & Flowers ruffled compote - marigold on custard - super rare compote, marigold irid. is fantastic, minor shallow chip on top of base**
- ___ **51. Hearts & Flowers ruffled compote - green - super pretty example, scarce color**
- ___ 52. Hearts & Flowers ruffled compote - ice blue - scarce
- ___ 53. Hearts & Flowers ruffled compote - lime green - very scarce color & super pretty

- ___ 54. Hearts & Flowers ruffled compote - aqua opal - pastel & super
- ___ 55. Hearts & Flowers ruffled compote - blue - electric & nice, two small spots of epoxy on base
- ___ 56. Ten Mums ruffled bowl - marigold - nice
- ___ **57. Leaf & Beads rose bowl - ice green - very hard color to find plus very nice**
- ___ 58. Leaf & Beads rose bowl - aqua opal
- ___ 58a. Leaf & Beads rose bowl - green - super pretty
- ___ 59. Lot of 4 Beaded Shell tumblers - purple
- ___ **60. Octagon small size water pitcher - purple - very rare, pretty**
- ___ 61. Pony 10 ruffled bowl - amethyst
- ___ 62. Ribbon Tie 3 in 1 edge low bowl - blue - super fantastic! very small pinpoint on edge
- ___ **63. Persian Garden ruffled fruit bowl - marigold - very pretty, scarce**
- ___ 64. Apple Blossom Twigs low ruffled bowl - white - very nice
- ___ **65. N's Peacock at Urn 5 pc. IC set - ice green - super rare & pretty set, every one is nice**
- ___ 66. N's Peacock at Urn IC sauce - ice blue - pretty
- ___ 67. N's Peacock at Urn IC sauce - white - nice
- ___ **68. N's Peacock at Urn 7 pc. IC set - purple - super nice set**
- ___ 69. N's Peacock at Urn master IC bowl - marigold - nice
- ___ 69a. Peacock at Urn IC sauce - blue - electric, nice
- ___ **70. Beaded Bullseye 9" vase - emerald green - fantastic vase, beautiful, has 7" mouth, very minor burst in side of vase on dye run, neat!**
- ___ 71. Beaded Bullseye 8" vase - purple - fantastic, 6" mouth
- ___ 72. Beaded Bullseye 8" vase - amber - a beauty
- ___ 73. Beaded Bullseye 7" vase - marigold - 6" mouth
- ___ 74. N's Stippled Rays 10" PCE bowl w/BW back - green - super pretty
- ___ **75. Imperial Grape water pitcher - emerald green - very rare pitcher, kind of a mix between emerald & aqua, no matter what, it is rare & super**
- ___ **76. Imperial Grape water pitcher & one tumbler - purple - super**
- ___ 77. Ski Star lg size ruffled bowl w/beaded edge - peach opal - very unusual mold for this
- ___ 78. Propeller miniature compotes - green AND marigold
- ___ 79. Fine Cut & Roses Variant rose bowl - purple - this is the version without a collar base, very unusual
- ___ **80. Peacock at the Fountain ruffled fruit bowl - purple - very nice**
- ___ 81. Peach tumbler - blue
- ___ **82. Stippled and Banded Grape & Cable banana boat - marigold - scarce & very nice**
- ___ 83. Grape & Cable Variant 9" plate w/plain back - purple - pretty
- ___ 84. Lot of 2 Rococo vases - marigold - one has chip on base
- ___ **85. 1911 Atlantic City Elks 7" plate - blue - very scarce plate and nice**
- ___ 86. Vineland 10" Florentine candlesticks - amber - scarce set
- ___ 87. Fanciful low ruffled bowl - purple
- ___ 88. Fanciful low ruffled bowl - white - nice
- ___ 89. M'burg Leaf & Little Flowers goblet shaped compote - marigold - radium
- ___ **90. Ballard Merced Cal advertising ruffled bowl - amethyst - very scarce adv. piece**
- ___ 91. Grape & Cable cologne bottle - marigold
- ___ 92. Tree Trunk 8" squatty vase - blue - nice
- ___ 93. Tree Trunk 6 1/2" squatty vase - green
- ___ 94. Fruits & Flowers bonbon - blue - nice
- ___ **95. Grape & Cable fernery - white - very rare piece and super pretty, irid. is fabulous!**
- ___ **96. Daffodil water pitcher - green opal - not Carnival Glass, a very scarce pitcher in opalescent glass**
- ___ 97. Greek Key tumbler - blue opal AND N's Regal Sauces (4) - blue opal
- ___ 98. Stippled Grape & Cable 10" ruffled bowl - blue - scarce
- ___ 99. Imperial Grape 6" plate - purple
- ___ **100. Imperial Grape water carafe - emerald green - super pretty & very rare, very small chip on base**
- ___ **101. Imperial Grape water carafe - smoke - extremely rare color & very pretty!**
- ___ 102. Imperial Grape water carafe - purple - large chips on base
- ___ 103. N's Thin Rib 11" vase - blue
- ___ 104. N's Thin Rib 11" vase - purple
- ___ **105. Stippled Three Fruits 9" plate w/ribbed back - blue - has electric highlights, nice**
- ___ 106. Good Luck ruffled bowl w/ribbed back - blue - some very tiny nicks between points
- ___ **107. Wishbone ftd ruffled bowl - green - super pretty**
- ___ 108. Wishbone ftd ruffled bowl - marigold
- ___ 109. Inverted Feather cracker jar - green
- ___ **110. N's Thin Rib mid size 14" vase - sapphire - very rare vase, nice**

- ___ **111. N's Thin Rib mid size 13" vase - blue - scarce**
- ___ 112. N's Thin Rib 14 1/2" vase - Chinese coral - not Carnival Glass
- ___ 113. Stippled Peacocks ruffled bowl w/ribbed back - marigold - nice
- ___ 114. Thin Rib & Drape 5" vase - green - scarce color
- ___ 115. Stippled Peacocks 9" plate w/ribbed back - blue - large chip on back edge
- ___ 116. Miniature Morning Glory 8" vase - purple
- ___ 117. Miniature Morning Glory 6" vase - green
- ___ 118. Rustic 7" squatty vase - white - nice
- ___ 119. Rustic crimped edge 8" vase - blue
- ___ **120. M'burg Trout & Fly ruffled bowl - amethyst - satin, scarce**
- ___ **121. Embroidered Mums ruffled bowl w/ribbed back - blue - nice**
- ___ 122. Good Luck PCE bowl w/ribbed back - blue
- ___ 123. Persian Garden 6" plate w/Pool of Pearls back - white
- ___ 124. Persian Garden 6" plate - marigold
- ___ **125. Oriental Poppy 7 pc. tankard water set - green - very pretty set, scarce**
- ___ **126. Oriental Poppy 8 pc. tankard water set - purple - also a beautiful set**
- ___ 127. Holly ruffled bowl - amber
- ___ 128. Holly ruffled bowl - purple - can just see through it with bright light
- ___ 129. Hobstar & Fruit 2 sides up dish - marigold
- ___ **129a. Peacocks ruffled bowl w/ribbed back - green - scarce color & nice**
- ___ **130. Peacocks ruffled bowl w/ribbed back - aqua opal - scarce, nice**
- ___ 131. Peacocks ruffled bowl w/ribbed back - purple - some wear on high points on ruffles
- ___ 132. Grape & Cable powder jar - green - one bead has small chip on base
- ___ 133. Grape & Cable powder jar - purple - nice
- ___ 134. Drapery 8 1/2" vase - ice green
- ___ **135. Peacocks 9" plate w/ribbed back - blue - has electric highlights**
- ___ **136. Peacocks 9" plate w/ribbed back - purple - super pretty**
- ___ 137. Peacocks 9" plate w/ribbed back - marigold - manufacture slight separation between points
- ___ 138. Oriental Poppy tumbler - purple
- ___ 139. Springtime berry sauce - green
- ___ 140. Diamond Lace water pitcher - purple - a super one!
- ___ 141. Good Luck ruffled bowl w/ribbed back - marigold - nice
- ___ 142. Double Stemmed Rose dome ftd ruffled bowl - purple - super pretty
- ___ 143. Harvest Poppy ruffled compote - blue - scarce color
- ___ 144. Fanciful ruffled bowl - white - nice
- ___ **145. Zippered Heart giant rose bowl - green - very rare & highly desirable**
- ___ **146. Waterlily ftd ruffled sauce - reverse amberina opal - very rare, nice**
- ___ 147. Waterlily ftd ruffled sauce - vaseline - scarce
- ___ **148. Jockey Club advertising ruffled bowl - purple - one point made of epoxy**
- ___ 149. Vintage fernery - amethyst - feet have damage but super pretty
- ___ **150. Windmill round bowl - emerald green - rare color & nice**
- ___ 151. Smooth Panels 4 3/4" vase - marigold
- ___ **152. Rose Show Variant 9" plate - marigold - dark & super, couple chips on roses**
- ___ 153. Ripple 12" vase - purple - 2 7/8 base, nice
- ___ 154. Thistle banana boat - marigold - chip on top edge
- ___ **155. Nippon PCE bowl w/ribbed back - lime green - scarce color, very nice**
- ___ 156. Grape & Cable bonbon - blue - nice
- ___ 157. Grape & Cable bonbon - marigold
- ___ 158. Greek Key ruffled bowl w/BW back - green - pretty, tiny pinpoint on point
- ___ 159. Greek Key ruffled bowl w/BW back - purple - nice
- ___ 160. N's Fine Rib 11" vase - sapphire - very rare vase & nice
- ___ 161. Diamond Rib 7" squatty vase - amethyst
- ___ **162. M'burg Trout & Fly IC shaped bowl - green - satin, scarce**
- ___ **163. M'burg Nesting Swan ruffled bowl - marigold - radium & super, very dark & beautiful for these**
- ___ 164. M'burg Ohio Star 4" turned in compote - crystal - not Carnival Glass
- ___ 165. M'burg Hobstar & Feather 6" ftd rose bowl - crystal - not Carnival Glass
- ___ **166. Fern Brand Chocolates 6" advertising plate - amethyst - very pretty example**
- ___ 167. Lined Lattice 8 1/2" vase - purple - nice
- ___ **168. Stippled Grape & Cable Variant 9" plate w/ribbed back - blue - scarce plate, highly desirable**
- ___ 169. Stippled Grape & Cable 9" plate w/ribbed back - green - scarce
- ___ **170. Peacock & Dahlia 7" plate - marigold - very hard plate to get, a goodie**

- ___ 171. Basketweave Open Edge ruffled basket - smokey lavender - different color
- ___ **172. Hearts & Flowers ruffled bowl w/ribbed back - purple - very pretty**
- ___ 173. Poppy Show vase - vaseline opal - contemporary
- ___ 174. Poppy Show vase - pink or champagne - contemporary
- ___ 175. Rose Show 9" plate - marigold - very pretty, chip on rose, small buffed nick on base
- ___ 176. Persian Medallion bonbon - red - epoxy on base
- ___ 177. Flowers & Frames dome ftd ruffled bowl - purple - manufacture burn spots on edge
- ___ 178. Grape & Cable Variant PCE bowl w/ribbed back - blue - large chip off one point
- ___ 179. Grape & Cable 9" plate w/BW back - purple - nice
- ___ **180. Hattie chop plate - marigold - very scarce, nice**
- ___ 181. N's Bushel Basket - aqua opal - butterscotch with super pretty irid.
- ___ **182. Luster Rose ftd round fruit bowl - purple - really nice piece, beautiful**
- ___ 183. M'burg Primrose ruffled bowl - green - radium, nice
- ___ 184. Ohio Star vase - crystal - not Carnival Glass
- ___ **185. Orange Tree w/trunk 9" plate - blue - super pretty**
- ___ 186. Open Rose 9" plate - marigold
- ___ 187. Grape & Cable 11" ruffled bowl - white - scarce
- ___ 188. Grape & Cable 11" ruffled bowl - blue - scarce color, chip on back edge
- ___ 189. Enameled Cherries tumblers (2) - marigold
- ___ **190. Four Seventy Four small size water pitcher - purple - absolutely beautiful, epoxied chip on seam of base**
- ___ 191. Pony 10 ruffled bowl - amethyst - small buffed spot on one ruffle
- ___ **192. Enameled Rose of Paradise water pitcher & one tumbler - green - scarce, European**
- ___ **193. Stag & Holly spt ftd ruffled bowl - red - rare bowl, nice**
- ___ 194. 1983 ICGA Frolicking Bears spittoon - vaseline opal AND 1980 ICGA miniature town pump - marigold
- ___ **195. Rose Show ruffled bowl - aqua opal - nice**
- ___ 196. Chrysanthemum lg size ftd IC shape bowl - blue - pretty
- ___ **197. Paneled Diamond & Bows 8" vase - lime green with marigold - I think they call this Alaska coloring**
- ___ 198. Paneled Diamond & Bows 8" vase - amethyst
- ___ 199. Paneled Diamond & Bows 8 1/2" vase - marigold
- ___ **200. Grape Frieze 10" ftd IC shaped bowl - iridized custard w/nutmeg stain - very rare bowl, have not sold one for awhile**
- ___ 201. Lacy Dewdrop 2 sides up compote - marigold on milk glass
- ___ 202. Four Seventy Four 10" vase - marigold - scarce, nice
- ___ **203. Grape & Cable centerpiece bowl w/points up - white - scarce, pretty, a dandy**
- ___ 204. Peacock & Dahlia 7" IC shaped bowl - lime green - nice
- ___ **205. Dragon & Lotus IC shaped bowl - marigold on moonstone - very scarce & highly desirable, nice**
- ___ 206. Grape & Cable butter dish - green - very pretty example
- ___ 207. Three Fruits Medallion spt ftd ruffled bowl - purple
- ___ 208. Scroll Embossed 9" plate - purple - pretty, chip on back of point
- ___ 209. Lot of 4 tumblers - marigold & white - Stork & Rushes, & Grape Arbor have damage
- ___ **210. M'burg Strawberry Wreath 10" IC shaped bowl - amethyst - radium & super pretty**
- ___ 211. Drapery rose bowl - aqua opal - butterscotch, nice
- ___ 212. Scroll Embossed deep round bowl - purple
- ___ **213. M'burg Trout & Fly 3 in 1 edge bowl - lavender - scarce color**
- ___ 214. Blackberry ruffled compote - purple
- ___ **215. Eat Paradise Sodas 6" advertising plate - amethyst - nice**
- ___ 216. Stretch Glass Dolphins compote - pink
- ___ **217. Grape & Cable round punch bowl & base - marigold - hard to find in this shape**
- ___ 218. Apple Blossom Twigs 9" plate - white - very pretty & flat
- ___ 219. Heavy Grape master berry bowl - purple - pretty
- ___ **220. Loganberry vase - amber - scarce**
- ___ 221. Loganberry vase - green - repaired chip on top edge
- ___ 222. Ski Star deep ruffled sauce - purple - super
- ___ 223. Fenton's Fine Rib 9 1/2" vase - red
- ___ 224. Knotted Beads crimped edge 6 1/3" squatty vase - blue - unusual shape for this
- ___ **225. Lovely flared out ftd bowl - green - very rare pattern**
- ___ 226. Peacock & Grape IC shaped bowl - blue - fabulous, this is what you call blue irid.!

- ___ 227. M'burg Holly Sprig Variant crimped edge 8" bowl - amethyst - radium, nice
- ___ 228. Parlor Panels 12 1/2" vase - lavender
- ___ 229. Persian Garden 11" IC shaped bowl - white
- ___ **230. Orange Tree Orchard water pitcher - blue - scarce, nice**
- ___ 231. Three Fruits 9" plate w/plain back - purple - fantastic stretchy irid., chip off back point
- ___ 232. Dragon & Lotus ruffled bowl - blue
- ___ 233. Dugan Cherries ruffled bowl - purple - very pretty
- ___ 234. Beaded Bullseye 11" vase - purple
- ___ 235. M'burg Rosalind small size ruffled compote - amethyst - large chip filled with epoxy on base
- ___ 236. Butterfly bonbon with threaded back - purple - nice
- ___ 237. M'burg Hanging Cherries sugar bowl lid - green
- ___ 238. Big Basketweave 9" vase - blue - nick on point
- ___ 239. Diamond & Column 8" vase - amethyst
- ___ **240. M'burg Hobnail spittoon - amethyst - scarce, nice**
- ___ 241. Dragon & Lotus 3 in 1 edge bowl - marigold
- ___ 242. Lot of 2 Lacy Dewdrop pieces - marigold on milk glass
- ___ 243. N's Corn vase w/stalk base - ice green
- ___ 244. Grape & Cable sweetmeat - purple - nice
- ___ **245. Pond Lily bonbon - peach opal - only one I've seen, minor nick on inside of bowl where handle applies**
- ___ **246. Webbed Clematis 12 1/2" vase - marigold with flashed red & blue flowers, rare**
- ___ 247. Cobblestone ruffled bowl - purple - pretty
- ___ **248. Stippled Strawberry PCE bowl w/ribbed back - blue - scarce**
- ___ 249. Holly 3 in 1 edge bowl - blue - minor pinpoint on point
- ___ **250. E.A. Hudson Furniture Co. advertising handgrip plate - amethyst - very nice, scarce**
- ___ 251. Three Fruits ruffled bowl w/plain back - purple - nice
- ___ 252. Blackberry miniature ftd plate - blue - scarce, teeny tiny typical pinpoint on base
- ___ 253. Imperial Grape wine bottle, no stopper - smoke
- ___ 254. Imperial Grape wine bottle, no stopper AND Grape & Cable sherbet - marigold
- ___ **255. Near Cut cologne bottle - marigold - very nice example, quite rare**
- ___ 256. Odd Bubbles lamp shade - marigold with white paint inside - found in Hartung's book
- ___ 257. Persian Garden 6" plate - peach opal - scarce plate, nice
- ___ 258. Grape & Cable hatpin holder - green - super pretty, bottom of feet may be polished
- ___ 259. Lot of 3 pieces Carnival Glass
- ___ 260. Stippled Three Fruits ruffled bowl w/ribbed back - marigold - pretty
- ___ 261. N's Thin Rib 10 1/2" vase - blue
- ___ 262. Grape & Cable Variant ruffled bowl w/plain back - purple
- ___ 263. Holly ruffled hat - red
- ___ **264. Homestead chop plate - purple - very rare plate, nice**
- ___ **265. Homestead chop plate - amber - another very scarce plate**
- ___ **266. Homestead chop plate - smoke - heavy stretchy iridescence**
- ___ **267. Homestead chop plate - clambroth - has stretchy iridescence, this is a neat plate**
- ___ **268. NUART Homestead chop plate - green - super pretty, large chip filled with epoxy on edge**
- ___ **269. NUART Homestead chop plate - smoke - very nice example, dark smoke color**
- ___ **270. NUART Homestead chop plate - don't know what color to call this, amber/marigold/ smoke? just a neat plate**
- ___ **271. Fenton 1976 Ltd Edition Hanging Hearts 7 pc. water set - iridized custard**
- ___ **272. Lacy Dewdrop cvd compote - white - contemporary**

PRESORTED
FIRST CLASS MAIL
US POSTAGE
PAID
MAIL EXPEDITORS

SEECK AUCTIONS
P.O. BOX 377
MASON CITY, IA 50401

200.



**2016 CARNIVAL
GLASS AUCTION**

255.

Sat., June 4 9:30 a.m.
Best Western Milwaukee Airport
Hotel and Convention Center
Milwaukee, Wisconsin

T4 P1 175
LEE MARKLEY
BOX 306
MENTONE IN 46539-0306



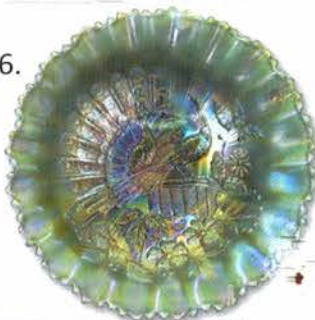
21.



28.



36.



44.



31.



60.



95.



101.



110.



85.



180.



193.



250.

