

# BURNS

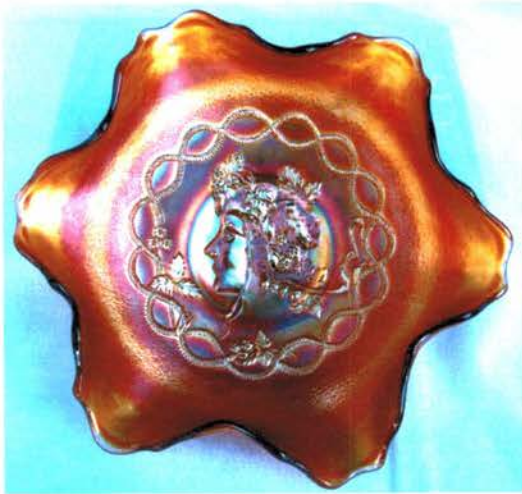
AUCTION SERVICE

**2016**

**HEART OF AMERICA CARNIVAL  
GLASS ASSOCIATION CONVENTION  
AUCTION**

**SATURDAY, APRIL 23rd at 9:30 A.M.**

The Galen & Kathi Johnson Collection



Lot 35



Lot 100

**Preview:**

Friday from 6:00 p.m. to 10:00 p.m.  
Saturday from 7:00 a.m. to 9:30 a.m.

at the

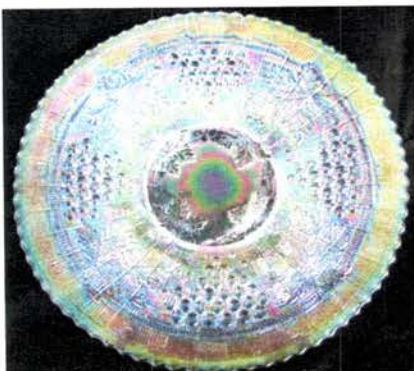
**Embassy Suites Airport Hotel**

7640 NW Tiffany Springs Parkway

Kansas City, Missouri 64153

**Call for Reservations 816-891-7788**

Tom Burns, Auctioneer; William Richards III, Auctioneer



Lot 315



Lot 51



Lot 50



Lot 52



Lot 305

Kansas City...Kansas City, here we come! It's been a while, but we sure are excited to be coming back to good old K.C.! We are privileged to have this opportunity to provide the 2016 HOACGA Convention Auction this year and even more excited to present the fine collection of Galen & Kathi Johnson.

These folks have amassed an exceptional 20-year collection with Galen's emphasis on Millersburg and Kathi's diverse interest in both American and Foreign items. The Johnson's have also put together a special website that will show all auction items with a 360 degree turntable with an additional ability to magnify each item, all up close and personal; just go to [www.johnsoncarnival.com](http://www.johnsoncarnival.com) for the show. The convention will be held at the Embassy Suites, K.C.I. located at 7640 NW Tiffany Springs Pkwy., Kansas City, MO 64153. (exit 10 off I-29). Phone: (816) 891-7788. Go to [www.hoacga.com](http://www.hoacga.com) for more information.

This auction will be available on Auction Flex Absentee Bidding system and located at Auction Zip ID #29661. Auction Flex deadline is Friday, April 22 at 11:59 p.m. By the way, any absentee bidder who needs to talk to Tom needs to do it early...do not wait until the last minute!!! There will be a 4% processing fee if paying by credit card. One last convenience for you folks is the use of PayPal for folks in Europe or other countries. All you have to do is contact Galen at (763) 441-5587 or email him at [galenandkathi@yahoo.com](mailto:galenandkathi@yahoo.com). There is a 4% buyers premium for that use.

We are excited to get 'er done and are really looking forward to seeing ya'll. Take Care! For further information or if we can be of use, call (407) 592-6552 or write Tom Burns, 183 Sunnyside Drive, Clermont, FL 34711.

All absentee bidders note...if you are successful, I will mail the item and then call you with your total cost owed. All mailings will carry a minimum \$5 handling charge towards packing supplies, etc. All dealers, please bring valid tax information.

- \_\_\_ 1. Horned Owl Button – Non-Iridized Tortoise Shell (very interesting item; really different)
- \_\_\_ 2. Golden Owl Hatpin – Dark (rare; desirable)
- \_\_\_ 3. Little Owl Hatpin – Dark (a non-iridized, odd smaller size)
- \_\_\_ 4. Single Dragonfly Hatpin – Dark (rare; really nice irid.)
- \_\_\_ 5. **FUCHSIA BASKET HATPIN – BLUE (GREAT GOLD DECORATION W/ BRIGHT BASE COLOR)**
- \_\_\_ 6. Star Center Hatpin – Dark (rare; unusual larger size)
- \_\_\_ 7. Deep Cut Twist Hatpin – Dark (rare; nice irid.)
- \_\_\_ 8. Paisley Hatpin – Dark (rare; great irid.)
- \_\_\_ 9. King Tut (or Zodiac) Hatpin – Dark (very different w/ blue highlights)
- \_\_\_ 10. Spectacular Hatpin – Dark (very scarce; nice)
- \_\_\_ 11. Suns Up Hatpin; framed in box – Lt. Amethyst (very rare; very desirable; nice item)
- \_\_\_ 12. Suns Up Hatpin – Non-iridized Black/Gold Dec. (Rooster done in gold)
- \_\_\_ 13. Pair Imperial #575 Stretch Lamp Shades – Smoke (Pearl Green is the proper name; really nice)
- \_\_\_ 14. Pair Imperial Leaf Garden Lamp Shades – Smoke (rare pair in a rare color; really tough to find)
- \_\_\_ 15. **9 1/8" N PEACOCKS PLATE W/ RIBBED EXT. – EMERALD GREEN (ABSOLUTELY FANTASTIC; BRIGHT RADIUM EMERALD...SUPER!!)**
- \_\_\_ 16. 9 1/8" N Peacocks Plate w/ Ribbed Ext. – Dk. Mari. (nice, dark pumpkin example)
- \_\_\_ 17. 9 1/8" N Peacocks Stippled Plate w/ Ribbed Ext. – Elec. Blue (has a desirable bright blue finish)
- \_\_\_ 18. 9 1/8" N Peacocks Stippled Plate w/ Ribbed Ext. – Pastel Mari. (light & bright irid.; really nice)
- \_\_\_ 19. N G&C 2 pc. Candle Lamp – Green (nice bright base; the shade is satiny)
- \_\_\_ 20. **M'BURG PIPE HUMIDOR W/ LID – AMETHYST (1/8" NO HARM FLAKE ON TOP RIM OF BASE; RARE W/ A BRILLIANT RADIUM LOOK)**
- \_\_\_ 21. M'burg Leaf & Little Flowers 6 Ruffled Compote – Amethyst (radium & very scarce)
- \_\_\_ 22. M'burg Leaf & Little Flowers Flared Compote – Green (radium & very desirable)
- \_\_\_ 23. M'burg Leaf & Little Flowers Flared Compote – Mari. (radium & tough to find; nice)
- \_\_\_ 24. 7" Fenton 2 Row Open Edge Large-Size Ice Cream Shaped Bowl – Ice Green (very scarce; unusual w/ original gold trim)
- \_\_\_ 25. **9 1/2" FENTON THISTLE FLAT PLATE – AMETHYST (RARE & VERY DESIRABLE; HAS A BRIGHT RADIUM FINISH)**
- \_\_\_ 26. **9 1/2" FENTON THISTLE FLAT PLATE – GREEN (RARE & TOUGH TO FIND; NICE SATINY FINISH)**
- \_\_\_ 27. **9 1/4" FENTON THISTLE FLAT PLATE – MARI. (VERY TOUGH TO FIND; HAS A NICE DARK SATINY FINISH)**
- \_\_\_ 28. N Oriental Poppy 7 pc. Tankard Water Set – Dk. Mari. (has Ribbed Interior – dark and a beauty!!)
- \_\_\_ 29. 10 1/4" Tall N Tree Trunk Standard Swung Vase – Elec. Blue (this thing looks blue across the room; nice)
- \_\_\_ 30. **INWALD DECORAMA 7 PC. WATER SET – DK. MARI. (RARE & VERY DESIRABLE SET; DARK AND HAS 4 5/8" TALL TUMBLERS)**
- \_\_\_ 31. 4" Tall Inwald Decorama ftd. Tumbler – Dk. Mari. (dark color; great irid.; rare item)
- \_\_\_ 32. 3 1/2" Tall Inwald Decorama ftd. Juice Glass – Dk. Mari. (dark color; great irid.; tough to find)
- \_\_\_ 33. 2 3/8" Tall Inwald Decorama Miniature Ftd. Cordial – Dk. Mari. (dark color; great irid.; rare miniature)
- \_\_\_ 34. 15" Long x 7 1/2" Wide x 6" Tall Inwald Diamond Cut Lg. Oval Jardinière – Dk. Mari. (this item is HUGE; super color; super irid.)
- \_\_\_ 35. **9" FENTON GODDESS OF THE HARVEST 6 RUFFLED BOWL – DK. MARI. (EXTREMELY RARE & VERY DESIRABLE; NICE SATINY FINISH; EXCELLENT DETAIL)**

36. **4 ½" TALL X 3 ¼" TOP DIAMETER IMPERIAL MINIATURE MORNING GLORY SWUNG VASE – MARI./ VASELINE (SUPER COLOR... I LOVE THIS THING... GLOWS LIKE CRAZY)**
37. 5" Tall x 3 5/8" Top Diameter Imperial Miniature Morning Glory Swung Vase – Purple (very desirable; super irid.)
38. 5" Tall x 4" Top Diameter Imperial Miniature Morning Glory Swung Vase – Smoke (scarce; super irid.)
39. **12 ¾" TALL X 9" TOP DIAMETER X 4 7/8" BASE IMPERIAL MORNING GLORY SWUNG FUNERAL VASE – PURPLE (VERY DESIRABLE; GREAT IRID.; GREAT SHAPE; BASE HAS "LITTLE STARS")**
40. **10 ¼" IMPERIAL HOMESTEAD FLAT CHOP PLATE – SIGNED NUART – BLUE (EXTREMELY RARE BASE COLOR; HAS A COUPLE OF TINY CHIPS ON THE EDGE)**
41. **10 ¼" IMPERIAL HOMESTEAD FLAT CHOP PLATE – UNSIGNED – PURPLE (VERY DESIRABLE; SUPER IRID.)**
42. 9" Imperial Floral & Optic ftd. Flared Bowl – Purple (super color & brilliant irid.)
43. Imperial Open Rose Rose Bowl – Purple (tough shape to find in this color; nice)
44. Imperial Hobstar Flower Stemmed 6 Ruffled Compote – Emerald Green (super base color w/ a brilliant finish)
45. **9 ½" FENTON PEACOCK & GRAPE FLAT PLATE – GREEN (NOT ONLY EXTREMELY RARE IN THIS COLOR, BUT ALSO VERY ATTRACTIVE)**
46. 9 ½" Fenton Peacock & Grape Flared Plate – Blue (rare color; really nice irid. & detail)
47. 9 ¾" Fenton Peacock & Grape Flared Plate – Mari. (very desirable w/ bright highlights)
48. 8 ¼" Fenton Peacock & Grape Bowl w/ 3 in 1 Edge – P. Opal. (dark irid. w/ opal on edge; nice)
49. 9 ½" Fenton Fern 3 ftd. 8 Ruffled Bowl – Lt. Mari. (extremely rare pattern; not many examples known; very light in color)
50. **10" TALL M'BURG ROSE COLUMNS 6 RUFFLED VASE – DK. MARI. (EXTREMELY RARE; DARK & A VERY DESIRABLE ITEM)**
51. **10 ¼" TALL M'BURG ROSE COLUMNS 6 RUFFLED VASE – AMETHYST (ANOTHER RARE & DESIRABLE ITEM; SUPER IRID.)**
52. **10" TALL M'BURG ROSE COLUMNS 6 RUFFLED VASE – AQUA (ODD BASE COLOR; RARE ITEM WITH A SATINY FINISH)**
53. 5 ¾" Tall x 5 3/8" Top Diameter M'burg Bullseye & Loop Squatty Flared Vase – Amethyst (rare size for this scarce item)
54. **5 ½" TALL X 5" TOP DIAMETER M'BURG COUNTRY KITCHEN FLARED VASE – DK. MARI. (EXTREMELY RARE WHIMSEY; NOT MANY KNOWN)**
55. **M'BURG HOBSTAR & FEATHER CLUB SHAPED NAPPY – RUBY STAINED/ FROSTED (VERY RARE & VERY DESIRABLE)**
56. **7 3/8" M'BURG HOBSTAR & FEATHER RELISH TRAY – RUBY STAINED/ FROSTED (VERY RARE & VERY DESIRABLE)**
57. M'burg Hobstar & Feather Lg. Mammoth Water Pitcher – Crystal (tough crystal item to find; large and rare)
58. 8 1/8" M'burg Country Kitchen 6 Ruffled Bowl – Mari. (very scarce item w/ a nice radium finish)
59. M'burg Hobnail Spittoon – Amethyst (rare & desirable; gold highlights)
60. **5 ¾" M'BURG SEAWEED ICE CREAM SHAPED SAUCE – BLUE (EXTREMELY RARE & VERY DESIRABLE; GREAT SATINY FINISH)**
61. **5 ½" M'BURG ROSALIND ICE CREAM SHAPED SAUCE – DK. MARI. (SATINY FINISH ON A REALLY A RARE ITEM IN THIS SHAPE & COLOR)**
62. **6 ¼" M'BURG ROSALIND 6 RUFFLED SAUCE – AMETHYST (VERY RARE ITEM W/ A GREAT SATINY FINISH)**
63. 10" M'burg Rosalind Lg. Ice Cream Shaped Bowl – Amethyst (quite a tough size; nice irid. – very desirable)
64. **10 5/8" M'BURG ROSALIND LG. 6 RUFFLED BOWL – AQUA (ODD BASE COLOR W/ A BEAUTIFUL SATINY FINISH)**
65. **8 7/8" M'BURG ROSALIND FLARED PLATE – GREEN (RARE ITEM; TOUGH SIZE & SHAPE; NICE IRID.)**
66. **M'BURG SEACOAST PIN TRAY – GREEN (RARE; DESIRABLE W/ A BRIGHT FINISH)**
67. M'burg Seacoast Pin Tray – Amethyst (rare; nice irid. w/ goldish highlights)
68. M'burg Seacoast Pin Tray – Mari. (rare color; nice detail; small flake on back rim at 12 o'clock)
69. 6" M'burg Holly Sprig 6 Ruffled Crimped Sauce – Mari. (radium & very desirable)
70. **6" M'BURG HANGING CHERRIES SAUCE W/ 3 IN 1 EDGE – BLUE (RARE & VERY DESIRABLE; GREAT COLOR & IRID.)**
71. **10" M'BURG HANGING CHERRIES LG. BOWL W/ 3 IN 1 EDGE & HOBNAIL EXT. – BLUE (EXTREMELY RARE ITEM IN THIS COLOR; SMALL CHIP ON COLLAR BASE)**
72. **6 1/8" M'BURG LITTLE STARS 6 RUFFLED SAUCE – AMETHYST (NICE SATINY EXAMPLE; RARE SIZE)**
73. 8 ¾" M'burg Little Stars Ice Cream Shaped Bowl – Mari. (scarce; nice satiny finish)
74. **7 ½" M'BURG LITTLE STARS BOWL W/ 3 IN 1 EDGE – BLUE (EXTREMELY RARE COLOR & SHAPE – HAS APPROX. 5 CHIPS ON COLLAR BASE)**
75. **N G&C 14 PC. RUFFLED MASTER PUNCH SET – BLUE (RARE & VERY DESIRABLE SET; GREAT COLOR – CUPS ARE STIPPLED)**
76. N Basket of Roses Stippled 2 Handled Bon Bon w/ Basketweave Ext. – Amethyst (very scarce item; nice color)
77. **9 ½" TALL N LEAF COLUMNS SWUNG VASE – SAPPHIRE (VERY RARE BASE COLOR; VERY DESIRABLE)**
78. 10 ¼" Tall N Diamond Point Swung Vase – Ice Blue (very desirable; nice irid.)
79. 10" Tall N Diamond Point Swung Vase – Lime Ice Green (rare base color; has small chip on base)

80. 8 ¾" N ROSE SHOW 8 RUFFLED BOWL – SAPPHIRE (RARE COLOR FOR THIS PATTERN; SMALL CHIP ON ONE ROSE)
81. 8 ¾" N ROSE SHOW 8 RUFFLED BOWL – AQUA OPAL. (SUPER PASTEL EXAMPLE; GREAT IRID. & BASE COLOR)
82. 9 ¼" N ROSE SHOW FLARED PLATE – PASTEL MARI. (SUPER IRID.; TEXT BOOK EXAMPLE OF THIS COLOR)
83. N G&C Stippled Covered Powder Jar – Amethyst (very rare variation; color on lid is weak)
84. U.S. Glass Palm Beach Handled Water Pitcher – Honey Amber (scarce item; really nice color)
85. 8 ¼" FENTON LEAF CHAIN ICE CREAM SHAPED BOWL – YELLOW (TRUE YELLOW ITEM; EXTREMELY RARE COLOR)
86. 9 ¼" FENTON LEAF CHAIN FLARED PLATE – ELEC. BLUE (SUPER IRID.; VERY DESIRABLE W/ EXCELLENT IRID.)
87. 9 ½" Fenton Leaf Chain Flat Plate – Dk. Mari. (super pumpkin example; nice & dark)
88. 8 ¾" Fenton Feather Stitch Bowl w/ 3 in 1 Edge – Mari./ Vaseline (actually quite a rare item in this shape & color)
89. 8 ½" Fenton Feather Stitch Ice Cream Shaped Bowl – Blue (very desirable item; great color & detail)
90. FENTON 1914 PARKERSBURG B.P.O.E. DINNER BELL – BLUE (RARE; DESIRABLE W/ EXCELLENT COLOR & DETAIL; HAS TINY, NO HARM FLAKE ON BOTTOM EDGE)
91. 8 5/8" Fenton Wild Blackberry Bowl w/ 3 in 1 & "H. Maday & Co.-1910" Advertising – Green (tough advertising item in a tough color)
92. 8 ½" Fenton Wild Blackberry Bowl w/ 3 in 1 & "H. Maday & Co.-1910" Advertising – Amethyst (another very scarce advertising item)
93. 7 ¾" Fenton Plaid Deep Round Flared Bowl – Teal (very scarce pattern in a rare shape & scarce color)
94. Fenton Cherry Circles Round 2 Handled Bon Bon – Green (very scarce color w/ excellent irid.)
95. 8" FENTON STAG & HOLLY SPATULA FTD. 8 RUFFLED BOWL – RED (VERY RARE & VERY DESIRABLE; ONE OF THE BETTER EXAMPLES I'VE SEEN LATELY)
96. 9 1/8" Fenton Stag & Holly Spatula ftd. Plate – Mari. (very scarce & desirable)
97. 6" FENTON PANTHER 6 RUFFLED FTD. INDIVIDUAL BERRY BOWL – RED (RARE COLOR; NICE SATINY FINISH)
98. 6" FENTON LOTUS & POINSETTIA 6 RUFFLED FTD. SAUCE – REVERSE AMBERINA OPAL. (VERY DESIRABLE; OPAL ON EDGE AND FEET)
99. Fenton Rose Bouquet 2 Handled Bon Bon – White (very scarce w/ excellent irid.)
100. 7 ¾" FENTON "STATE HOUSE OF INDIANA" FLARED PLATE – DK. MARI. (ONE OF THE BEST PIECES IN CARNIVAL; EXTREMELY RARE; SLIGHT WEAR IN PATTERN)
101. 7 ¾" FENTON "ILLINOIS SOLDIERS AND SAILORS HOME" FLAT PLATE – DK. MARI. (RARE W/ BRILLIANT IRID.; A SUPER EXAMPLE)
102. 9 ½" Fenton Captive Rose Flared Plate – Amethyst (excellent irid.; very nice)
103. 9 ½" Fenton Captive Rose Flared Plate – Green (another excellent example; really nice)
104. 9 ½" Fenton Captive Rose Flared Plate – Dk. Mari. (very scarce; has a bright irid.)
105. 9 ½" M'BURG RAYS & RIBBONS BOWL W/ 3 IN 1 EDGE – BLUE (EXTREMELY RARE AND DIFFICULT M'BURG ITEM; NICE SATINY FINISH)
106. 8 ¾" M'BURG RAYS & RIBBONS DEEP ROUND BOWL – MARI./ VASELINE (RADIUM AND EXTREMELY RARE, BOTH IN COLOR AND SHAPE)
107. 7 ½" M'burg Rays & Ribbons Rose Bowl – Mari. (radium and rare; has great irid.)
108. M'BURG NIGHT STARS 2 HANDLED CARD TRAY – MARI./ VASELINE (VERY RARE PATTERN IN AN EXTREMELY RARE COLOR)
109. M'burg Night Stars 2 Handled Oval Bon Bon – Mari. (rare and radium; really nice irid.)
110. 10 ¼" M'BURG MANY STARS 6 RUFFLED BOWL W/ 6 POINTED STAR – BLUE (VERY RARE & VERY DESIRABLE' EXCELLENT COLOR AND IRID.)
111. 10" M'BURG "BERNHEIMER BROTHERS" 6 RUFFLED BOWL – BLUE (RARE AND ALWAYS DESIRABLE; GREAT COLOR)
112. 9 ¼" M'BURG VINTAGE ICE CREAM SHAPED BOWL W/ HOBNAIL EXT. – GREEN (RARE AND VERY DESIRABLE; NICE SATINY FINISH)
113. 5 7/8" M 'BURG VINTAGE 3 IN 1 SAUCE W/ HOBNAIL EXT. – GREEN (VERY RARE ITEM W/ GREAT COLOR)
114. 9 ¾" M'BURG VINTAGE ICE CREAM SHAPED BOWL W/ HOBNAIL EXT. – MARI. (ANOTHER RARE AND VERY DESIRABLE ITEM)
115. 10" M'BURG WHIRLING LEAVES 6 RUFFLED BOWL – BLUE (EXTREMELY RARE SATINY ITEM; GREAT COLOR; SMALL FLAKE ON FACE)
116. 9 ½" M'burg Whirling Leaves 6 Ruffled Bowl – Mari./ Lt. Vaseline (radium; lights up a bit)
117. 9 ¾" M'burg Whirling Leaves Tri-Cornered Crimped Edge Bowl – Green (nice irid.; radium and rare)
118. 9 ½" M'burg Grape Leaves Bowl w/ 3 in 1 Edge – Amethyst (rare pattern w/ a super radium finish)
119. 9" M'burg Trout & Fly 6 Ruffled Bowl – Green (very scarce; nice satiny finish)
120. N G&C 14 PC. MASTER PUNCH SET – GREEN (VERY RARE COLOR; NICE ITEM; HAS 8 STIPPLED CUPS AND 4 NON-STIPPLED CUPS)
121. N G&C 3 FTD. FERNERY – GREEN (EXTREMELY RARE COLOR FOR THIS ITEM; SUPER EXAMPLE)
122. 9" N Good Luck Plate w/ Ribbed Ext. – Purple (very scarce w/ ribbed ext.; nice highlights)
123. 9" N Good Luck Plate w/ Basketweave Ext. – Green (very scarce item; nice satiny finish)

- \_\_\_ 124. **6 3/8" N "DAVIDSON'S SOCIETY CHOCOLATES" 2 SIDED CARD TRAY – AMETHYST (VERY DESIRABLE ITEM W/ EXCELLENT COLOR)**
- \_\_\_ 125. **N PEACOCK AT THE FOUNTAIN 7 PC. WATER SET – ICE BLUE (WHERE DO YOU FIND A COMPLETE SET?... EXCELLENT)**
- \_\_\_ 126. N Peacock at the Fountain Stemmed Compote w/ Ribbed Ext. – Mari. (really tough item to find in any color; nice example)
- \_\_\_ 127. **N PEACOCK AT THE FOUNTAIN 8 PC. RUFFLED PUNCH SET – PURPLE (VERY SCARCE & VERY DESIRABLE; NICE COLOR)**
- \_\_\_ 128. N Peacock at the Fountain ftd. Ruffled Fruit Bowl – Blue (very desirable w/ bright blue highlights)
- \_\_\_ 129. 8 3/4" N Peacocks Bowl w/ P.C.E. & Ribbed Ext. – Emerald Green (very scarce in this color & shape; nice)
- \_\_\_ 130. **13" TALL X 3 5/8" BASE INWALD FLEUR DE LIS LG. CYLINDER VASE – DK. MARI. (ABSOLUTELY SUPER COLOR ON A LARGE IMPRESSIVE ITEM; SMALL CHIP ON ONE FLAME)**
- \_\_\_ 131. 10" Tall x 3" Base Inwald Fleur de Lis Cylinder Vase – Dk. Mari. (rarer next size; super color)
- \_\_\_ 132. 8 1/4" Tall x 2 1/4" Base Inwald Fleur de Lis Cylinder Vase – Dk. Mari. (next size; super color)
- \_\_\_ 133. 6 1/4" Tall x 1 7/8" Base Inwald Fleur de Lis Cylinder Vase – Dk. Mari. (the baby of the bunch; super color)
- \_\_\_ 134. 10" x 4 1/4" Tall Inwald Fleur de Lis Lg. Turned in Rose Bowl – Mari. (large item; rare size)
- \_\_\_ 135. **LIBOCHOVICE PEBBLE & FAN LG. CYLINDER VASE – BLUE (EXTREMELY RARE ITEM, ESPECIALLY IN THIS COLOR)**
- \_\_\_ 136. Libochovice Pebble & Fan Lg. Cylinder Vase – Vaseline/ Mari. (extremely rare color for this item; has collector's label)
- \_\_\_ 137. Libochovice Giant Lily Lg. Round Vase – Mari. (rare & unusual; has a great deco look)
- \_\_\_ 138. Cristalerias Rigolleau CR Ashtray – Blue (rare color for this novelty item)
- \_\_\_ 139. Cristalerias Rigolleau CR Ashtray – Dk. Mari. (another tough novelty; great color; rarer than the blue)
- \_\_\_ 140. 9 3/4" Tall Brockwitz Moonprint ftd. Flared Trumpet Vase – Mari. (very scarce shape; great color)
- \_\_\_ 141. Brockwitz Moonprint 7 pc. Cordial Set – Mari. (rare set; could use a couple more cordials)
- \_\_\_ 142. Brockwitz Curved Star Flower Frog w/ Metal Top – Blue (rare size in a rare color; 1<sup>st</sup> I've seen)
- \_\_\_ 143. Brockwitz Rose Garden Flower Frog w/ Metal Top – Blue (another rare item; haven't seen another; some chips in pattern)
- \_\_\_ 144. 9 1/2" Sowerby Four Flowers Variant Flared Plate – Emerald Green (very desirable w/ super irid.)
- \_\_\_ 145. **8" FENTON LITTLE DAISIES DEEP ROUND BOWL – DK. MARI. (RARE PATTERN W/ NICE COLOR IN A RARE SHAPE)**
- \_\_\_ 146. 9 3/4" Fenton Dragon & Strawberry 3 ftd. Ruffled Bowl – Green (rare & desirable; nice satiny finish)
- \_\_\_ 147. 8 1/4" Fenton Concord Grape Bowl w/ 3 in 1 Edge – Amethyst (scarce; really nice irid.)
- \_\_\_ 148. 8 1/2" Fenton Concord Grape Bowl w/ 3 in 1 Edge – Green (another desirable item w/ nice irid.)
- \_\_\_ 149. 8 1/2" Fenton Concord Grape Bowl w/ 3 in 1 Edge – Dk. Mari. (scarce; super color)
- \_\_\_ 150. **M'BURG CLEVELAND MEMORIAL ASHTRAY – AMETHYST (VERY RARE AND VERY DESIRABLE; MOLD FLAW ON BASE; FROM LEONARD'S COLLECTION)**
- \_\_\_ 151. **6 1/2" M'BURG "CAMPBELL & BEESLEY CO. SPRING OPENING – 1911" ADVERTISING HAND GRIP PLATE – AMETHYST (SUPER RARE ITEM W/ EXCELLENT COLOR & DETAIL)**
- \_\_\_ 152. **6 3/4" M'BURG "DETROIT – 1910" 2 EYED ELK ICE CREAM SHAPED BOWL – AMETHYST (RARE AND ALWAYS DESIRABLE; SUPER RADIUM FINISH)**
- \_\_\_ 153. **6 3/4" M'BURG COURTHOUSE ICE CREAM SHAPED BOWL – AMETHYST (VERY DESIRABLE SHAPE FOR THIS POPULAR ITEM)**
- \_\_\_ 154. 9 3/4" M'burg Zig Zag Bowl w/ 3 in 1 Edge – Amethyst (scarce & satiny; pinhead on edge)
- \_\_\_ 155. **8 3/4" M'BURG NESTING SWAN 4 SIDED SQUARE CRIMPED BOWL – GREEN (RARE SHAPE; RADIUM & VERY DESIRABLE)**
- \_\_\_ 156. **5 1/2" M'BURG HOLLY SPRIG WHIMSEY ROSE BOWL – MARI./ VASELINE (EXTREMELY RARE & VERY DESIRABLE; RADIUM)**
- \_\_\_ 157. **7 1/8" M'BURG HOLLY SPRIG ODD 8 RUFFLED BOWL – MARI./ VASELINE (ANOTHER VERY RARE ITEM IN THIS COLOR)**
- \_\_\_ 158. 7 5/8" M'burg Hanging Cherries Whimsey Flared Plate – Mari. (rare size for this item; nice satiny finish)
- \_\_\_ 159. M'burg Marilyn Handled Water Pitcher – Amethyst (very desirable; satiny & nice)
- \_\_\_ 160. **8 3/4" FENTON ORANGE TREE 8 RUFFLED BOWL – RED (A PRIME EXAMPLE OF THIS ITEM IN THIS COLOR)**
- \_\_\_ 161. 9 1/4" Fenton Orange Tree 8 Ruffled bowl – Green (very scarce & desirable color; pinhead on one tooth)
- \_\_\_ 162. 9 3/4" Fenton Orange Tree Flat Plate – Elec. Blue (very desirable irid. – really nice)
- \_\_\_ 163. **FENTON ORANGE TREE LG. 3 FTD. RUFFLED FRUIT BOWL – AMETHYST (EXTREMELY RARE COLOR FOR THIS ITEM)**
- \_\_\_ 164. **FENTON ORANGE TREE LG. 3 FTD. RUFFLED FRUIT BOWL – GREEN (ANOTHER VERY RARE COLOR FOR THIS ITEM)**
- \_\_\_ 165. **FENTON ORANGE TREE FLARED PUNCH BOWL & BASE – GREEN (EXTREMELY RARE OPPORTUNITY TO OWN AN EXTREMELY RARE SET; SMALL CHIP ON TOP OF BASE)**
- \_\_\_ 166. **FENTON ORANGE TREE WHIMSEY 6 RUFFLED PUNCH BOWL CENTERPIECE – MARI. (RARE RUFFLED TOP; NOT OFTEN SOLD)**
- \_\_\_ 167. **FENTON ORANGE TREE PUNCH CUP WHIMSEY CREAMER – WHITE (JUST AS CUTE AS CAN BE; RARE!)**
- \_\_\_ 168. **FENTON ORANGE TREE PUNCH CUP WHIMSEY HANDLED PIN TRAY – MARI. (ANOTHER VERY DESIRABLE WHIMSEY ITEM; NICE!)**



Lot 60



Lot 105



Lot 225



Lot 110



Lot 285



Lot 108



Lot 106



Lot 210



Lot 66



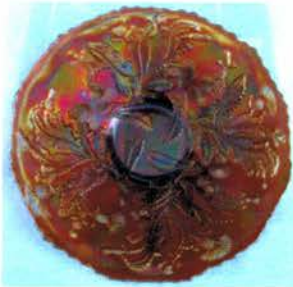
Lot 300



Lot 97



Lot 202



Lot 25



Lot 40



Lot 45



Lot 55



Lot 205



Lot 221



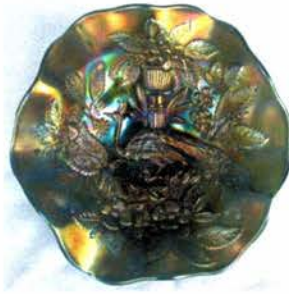
Lot 280



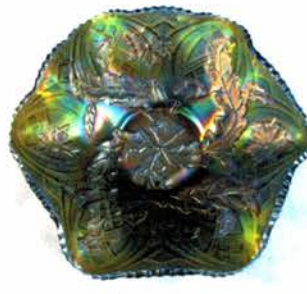
Lot 275



Lot 111



Lot 227



Lot 115



Lot 70



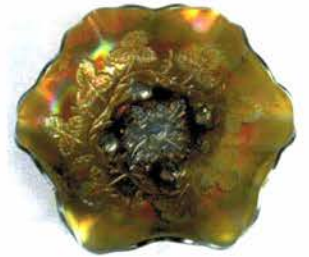
Lot 215



Lot 295



Lot 157



Lot 301



Lot 203



Lot 98



Lot 158



Lot 67



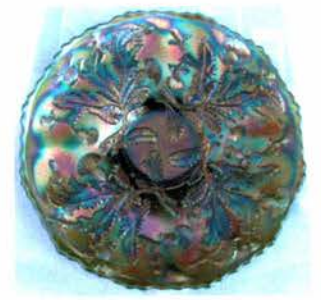
Lot 56



Lot 46



Lot 41



Lot 26



Lot 277



Lot 281



Lot 222



Lot 206

- \_\_\_ 169. 4 ¼" Tall x 4 ½" Top Diameter Fenton April Showers Squatty Proof Vase – Mari. (squatty and very desirable; super)
- \_\_\_ 170. **11 ½" DUGAN GARDEN PATH VARIANT FLAT CHOP PLATE – PURPLE (RARE AND EXTREMELY DESIRABLE; GREAT IRID.; HAS MANUF. PEELING)**
- \_\_\_ 171. 6 3/8" Dugan Petal & Fan Crimped Edge Plate – Purple (scarce; super irid.)
- \_\_\_ 172. 7 ½" Dugan Question Mark ftd. Plate w/ Georgia Peach and Puzzle Ext. – Purple (absolutely super example)
- \_\_\_ 173. 5 ¼" Tall x 7" Top Diameter Dugan Pulled Loop Squatty Flared Vase – Purple (great size w/ excellent irid.; nice)
- \_\_\_ 174. Dugan Grapevine Lattice Tri-Cornered Hat – Amethyst (very rare shape – unusual to find)
- \_\_\_ 175. **DUGAN THUMBPRINT STRETCH STEMMED 8 RUFFLED COMPOTE – COBALT BLUE (VERY RARE COLOR FOR THIS STRETCH ITEM)**
- \_\_\_ 176. **DUGAN THUMBPRINT STRETCH STEMMED 8 RUFFLED COMPOTE – ICE GREEN (ANOTHER RARE STRETCH ITEM; TOUGH TO FIND)**
- \_\_\_ 177. **4 ¾" TALL DUGAN BIG BASKETWEAVE SQUATTY FLARED VASE – PURPLE (RARE SHAPE W/ EXCELLENT IRID.)**
- \_\_\_ 178. 5" Tall Dugan Big Basketweave Squatty Flared Vase – Mari. (another example in a rare shape)
- \_\_\_ 179. Dugan Mary Ann 3 Handled Loving Cup – Mari. (always desirable; haven't sold one in a while)
- \_\_\_ 180. **10 ½" DUGAN WISHBONE & SPADES FLAT CHOP PLATE – PURPLE (ABSOLUTELY BEAUTIFUL W/ BRIGHT BLUE HIGHLIGHTS)**
- \_\_\_ 181. 10 ¾" Dugan Petal & Fan Lg. 6 Ruffled Bowl w/ Jeweled Heart Ext. – Purple (really nice w/ red & blue highlights; small flea bite on edge)
- \_\_\_ 182. 10 ½" Dugan Petal & Fan Lg. Ice Cream Shape Bowl – Mari. (rare shape & has super irid.)
- \_\_\_ 183. 9 ½" Dugan Cherries 6 Ruffled Bowl w/ Jeweled Heart Ext. – Purple (excellent color & irid.; really nice)
- \_\_\_ 184. **10" DUGAN COSMOS 6 RUFFLED BOWL – ODD LT. AMETHYST W/ RED STREAKS (VERY UNUSUAL W/ ODD COLOR & PIGMENT)**
- \_\_\_ 185. **8 ½" DUGAN DOUBLE STEM ROSE DOMED 10 RUFFLED BOWL – CELESTE BLUE (RARE AND DESIRABLE; GREAT COLOR)**
- \_\_\_ 186. **6 ½" TALL X 9" TOP DIAMETER CROWN CRYSTAL BUTTERFLY BUSH & WARATAH 12 RUFFLED STEMMED COMPOTE – PURPLE (RARE ITEM FROM DOWN UNDER; NICE)**
- \_\_\_ 187. 6 ½" Tall x 9 ¾" Top Diameter Crown Crystal Emu Lg. Flared Stemmed Compote – Mari. (rare & desirable item; nice)
- \_\_\_ 188. **9 ¾" CROWN CRYSTAL THUNDERBIRD 12 RUFFLED BOWL – MARI. / AQUA (RARE BASE COLOR; VERY TOUGH TO FIND)**
- \_\_\_ 189. 9 7/8" Crown Crystal Thunderbird 12 Ruffled Bowl – Mari. (very scarce; nice color & irid.)
- \_\_\_ 190. **N ACORN BURRS 8 PC. RUFFLED PUNCH SET – GREEN (REALLY NICE COLOR FOR THIS SET; QUITE ATTRACTIVE)**
- \_\_\_ 191. **9" N HEARTS & FLOWERS FLARED PLATE W/ RIBBED EXT. – GREEN (RARE & VERY DESIRABLE COLOR; TOUGH ITEM)**
- \_\_\_ 192. 9" N Hearts & Flowers Flared Plate w/ Ribbed Ext. – Purple (very desirable item w/ great color)
- \_\_\_ 193. 9" N Hearts & Flowers 8 Ruffled Bowl w/ Ribbed Ext. – Lt. Aqua (rare color; really tough to find)
- \_\_\_ 194. N Hearts & Flowers Stemmed 6 Ruffled Compote w/ Ribbed Ext. – Elec. Blue (very desirable; excellent color & irid.; small chip on base)
- \_\_\_ 195. **N HEARTS & FLOWERS STEMMED 6 RUFFLED COMPOTE W/ RIBBED EXT. – AQUA OPAL. (ALWAYS DESIRABLE; NICE PASTEL FINISH)**
- \_\_\_ 196. 8 3/8" N Wishbone 3 ftd. Flared Plate w/ Ruffles & Rings Ext. – Green (very scarce color; nice irid.)
- \_\_\_ 197. 8" N Wishbone 8 Ruffled 3 ftd. Bowl w/ Ruffles & Rings Ext. – Lime Ice Green (rare, desirable base color; nice irid.)
- \_\_\_ 198. 8 ½" N Wishbone 8 Ruffled 3 ftd. Bowl w/ Ruffles & Rings Ext. – Blue/ Elec. Blue (another desirable item w/ nice irid.)
- \_\_\_ 199. 8 ¾" N Wishbone 3 ftd. Tri-Cornered Bowl/ Plate – Dk. Mari. (rare, desirable item w/ excellent color)
- \_\_\_ 200. **FENTON KITTENS SPITTOON – BLUE (VERY RARE & EXTREMELY DESIRABLE; FROM RINEHART COLLECTION)**
- \_\_\_ 201. **FENTON KITTENS SPITTOON – MARI. (THE OTHER VERY RARE & DESIRABLE EXAMPLE FROM THE RINEHART COLLECTION)**
- \_\_\_ 202. **FENTON BUTTERFLY ORNAMENT – GREEN (EXTREMELY RARE; EXTREMELY DESIRABLE)**
- \_\_\_ 203. **FENTON BUTTERFLY ORNAMENT – MARI. (ANOTHER VERY RARE ITEM W/ EXCELLENT COLOR & IRID.)**
- \_\_\_ 204. **U.S. GLASS COSMOS & CANE MINIATURE WHIMSEY SPITTOON – WHITE (SUPER DESIRABLE ITEM; FROSTY W/ GREAT IRID.; FROM INDIVIDUAL BERRY BOWL)**
- \_\_\_ 205. **PAIR 10 ½" TALL FENTON FLORENTINE STYLE CANDLESTICKS – RED (RARE PAIR; SO VERY TOUGH TO FIND)**
- \_\_\_ 206. **PAIR 8 ¾" TALL FENTON FLORENTINE CANDLESTICKS – RED (VERY RARE PAIR; LOOKS RED – REALLY TOUGH SET; SMALL FLEABITE ON ONE EDGE)**
- \_\_\_ 207. **9 7/8" TALL FENTON FINE RIB STANDARD SWUNG VASE – AQUA OPAL. (VERY RARE COLOR – AN EXCELLENT EXAMPLE)**
- \_\_\_ 208. 6 3/8" Fenton Horsehead Medallion 3 ftd. Flared Nut Bowl – Mari./ Vaseline (very scarce & desirable base color)
- \_\_\_ 209. 8" Fenton Horsehead Medallion 3 ftd. J.I.P. Bowl – Mari./ Vaseline (another very scarce item w/ great color)
- \_\_\_ 210. **8 ½" TALL FENTON DANCE OF THE VEILS (DANCING LADIES) FTD. 8 RUFFLED VASE – MARI. (VERY RARE; VERY DESIRABLE; GREAT DETAIL & GREAT COLOR; HAS A 3/16" FLAKE ON BASE)**
- \_\_\_ 211. 9 3/8" Fenton Persian Medallion Flared Plate – Blue (very scarce; really nice color & irid.)
- \_\_\_ 212. 9 ¼" Fenton Persian Medallion Flat Plate – Mari. (rare color w/ a nice satiny finish)



213. Fenton Persian Medallion 2 Handled 4 Sided Bon Bon – Celeste Blue (rare color; dark & desirable stretch effect; has 2 rough spots on edge)
214. 9 ¼" Fenton Two Flowers Spatula ftd. Flat Plate – Mari. (rare & underpriced; nice color)
215. **8 ½" TALL FENTON APPLE TREE WHIMSEY VASE W/ 6 5/8" FLARE – DK. MARI. (EXTREMELY RARE WHIMSEY – GREAT COLOR & IRID.)**
216. Fenton Butterfly & Berry 3 ftd. Fernery – Blue (quite a difficult item; great color & irid.)
217. 9 ¼" Fenton Butterfly & Berry 3 ftd. Ruffled Master Berry Bowl – White (rare item; nice & frosty)
218. **9 3/8" FENTON VINTAGE GRAPE FLAT PLATE – BLUE (TERRIBLY DIFFICULT ITEM TO FIND IN THIS COLOR)**
219. 9 ¼" Fenton Rustic Standard Swung Vase – P. Opal. (rare color; nice example; has an open bubble on base)
220. **7 ½" TALL X 5 ¾" TOP DIAMETER X 5 ½" BASE FENTON RUSTIC WHIMSEY PROOF UNSWUNG FUNERAL VASE – WHITE (EXTREMELY RARE; SUPER IRID.; NICE & FROSTY; HAS TWO SMALL FLAKES ON EDGE)**
221. **22" TALL X 7 7/8" TOP DIAMETER X 5 ¼" BASE FENTON RUSTIC SWUNG FUNERAL VASE W/ PLUNGER BASE – AMETHYST (RARE & EXTREMELY DESIRABLE)**
222. **18" TALL X 5 1/8" BASE FENTON RUSTIC SWUNG FUNERAL VASE – GREEN (GREAT COLOR; VERY DESIRABLE)**
223. **17 3/8" TALL X 5 1/8" BASE FENTON RUSTIC SWUNG FUNERAL VASE – BLUE (VERY SCARCE; NICE COLOR & SIZE)**
224. **19 1/8" TALL X 5 1/8" BASE FENTON RUSTIC SWUNG FUNERAL VASE – DK. MARI. (GREAT COLOR; REALLY NICE IRID.)**
225. **10 3/8" M'BURG PEACOCK AT THE URN LG. 6 RUFFLED BOWL – BLUE (EXTREMELY RARE; HAS BEE W/ NO BEADING)**
226. 10" M'burg Peacock at the Urn Lg. Ice Cream Bowl – Green (satiny)
227. **9" M'BURG PEACOCK AT THE URN "MYSTERY" 6 RUFFLED BOWL – BLUE (VERY RARE; NICE SATINY FINISH)**
228. 8 7/8" M'burg Peacock at the Urn "Mystery" 6 Ruffled Bowl – Mari. (nice satiny finish)
229. M'burg Peacock 5 pc. Flared Berry Set – Amethyst (super radium set; no bee & no beading)
230. **8" M'BURG PEACOCK DEEP ROUND "PROOF" BOWL – GREEN (RADIUM & RARE; NO BEE & NO BEADING)**
231. **5 5/8" M'BURG PEACOCK INDIVIDUAL ICE CREAM SHAPED SAUCE – BLUE (SATINY FINISH; NO BEE & NO BEADING)**
232. 6" M'burg Peacock Individual Ice Cream Shaped Sauce – Green (satiny finish; no bee & no beading)
233. 6 ¼" M'burg Peacock Flared Plate – Amethyst (satiny; rare shape; no bee & no beading)
234. **6 ¼" TALL CAMBRIDGE INVERTED STRAWBERRY FTD. STEMMED CHALICE – GREEN (EXTREMELY RARE SHAPE & COLOR; NICE IRID.)**
235. **IMPERIAL CHESTERFIELD STRETCH LG. HANDLED WATER PITCHER – RED (ABOUT AS DESIRABLE A PIECE OF STRETCH THERE IS)**
236. **IMPERIAL CHESTERFIELD STRETCH TANKARD TUMBLER – RED (ANOTHER RARE ITEM; NICE)**
237. 11 ¾" Tall Imperial Parlor Panels Swung Vase – Purple (rare w/ super irid.)
238. 5 ½" Tall x 2 ½" Base Imperial Ripple Miniature Swung Vase – Mari. (nice size)
239. 5 ¾" Tall x 4 ¾" Top Diameter x 2 ½" Base Imperial Ripple Miniature Swung Vase – Purple (scarce; super irid.)
240. **11" TALL X 9 3/8" TOP DIAMETER X 4 5/8" BASE IMPERIAL RIPPLE SQUATTY SWUNG FUNERAL VASE – PURPLE (NICE, BIG PIECE W/ EXCELLENT IRID.)**
241. 8 ¾" Tall x 5 ¼" Top Diameter Imperial Beaded Bullseye Swung Vase – Lime Green/ Vaseline (rare color; glows like crazy)
242. **8 5/8" IMPERIAL EMBOSSED SCROLL LG. 8 RUFFLED BOWL W/ FILE EXT. – AMBERINA (VERY RARE COLOR FOR THIS PATTERN; NOT MANY KNOWN)**
243. 9 1/8" Imperial Embossed Scroll Flat Plate – Amethyst (scarce; super irid.)
244. 10" Imperial Acanthus Flat Plate – Smoke (very scarce color w/ super irid.)
245. **7 ½" TALL IMPERIAL THREE ROW 6 RUFFLED VASE – DK. MARI. (EXTREMELY DESIRABLE; NICE COLOR & IRID.)**
246. **10" TALL IMPERIAL LOGANBERRY VASE – PURPLE (REALLY NICE ITEM; SUPER IRID.)**
247. **9 ¼" IMPERIAL SAND & SHELL FLAT PLATE – PURPLE (EXTREMELY DESIRABLE W/ EXCELLENT IRID.)**
248. 9 1/8" Imperial Lustre Rose 3 ftd. Centerpiece Bowl – Purple (where do ya see these?! Rare item w/ great irid.)
249. **IMPERIAL GRAPE WATER CARAFE – SMOKE (VERY RARE COLOR W/ EXCELLENT IRID.)**
250. **6" IMPERIAL TWINS 6 RUFFLED INDIVIDUAL BERRY BOWL – BLUE (EXTREMELY RARE BASE COLOR; REALLY NICE!!)**
251. Imperial Twins 6 Ruffled Fruit Bowl & Base – Smoke (rare set in this color; 2 pieces are in different shades of smoke; chip in pattern of base)
252. **IMPERIAL OCTAGON 6 PC. WINE SET – PURPLE (EXTREMELY RARE – REALLY NICE)**
253. Imperial Octagon Mid-Sized Water Pitcher – Purple (tough to find; perfect w/ nice irid.)
254. Imperial Octagon Tumbler – Purple (very scarce; nice)
255. **10 3/8" IMPERIAL CHRYSANTHEMUM CHOP PLATE – SIGNED NUART – PURPLE (RARE; VERY DESIRABLE; HAS EXCELLENT IRID.; SIGNED AND GOOD TO GO!!)**
256. **10 ½" IMPERIAL HATTIE FLAT CHOP PLATE – AMBER (RARE – AND SO TOUGH TO FIND; MAY HAVE MINISCULE FLAKE ON FACE)**
257. **IMPERIAL ZIPPER LOOP SMALL SIZE FINGER LAMP – SMOKE (VERY DESIRABLE; GREAT IRID.; TOUGH)**
258. **IMPERIAL CHATELAINE HANDLED WATER PITCHER – PURPLE (A BEAUT; GREAT IMPERIAL PURPLE EXAMPLE)**

259. Imperial Chatelaine Tumbler – Purple (very desirable; nice irid.)
260. IMPERIAL POINSETTIA HANDLED MILK PITCHER – PURPLE (OBSCURE IRID.; SUPER ITEM)
261. 9 3/8" FENTON "SOUVENIR OF J.N. LEDFORD CO. – COOLEEMEE, N.C." HEARTS AND VINE PLATE – DK. MARI. (EXTREMELY DESIRABLE; GREAT COLOR & DETAIL)
262. 9 1/2" FENTON "COMPLIMENTS OF SPECTOR'S DEPARTMENT STORE" HEARTS AND VINE FLAT PLATE – DK. MARI. (ANOTHER SUPER EXAMPLE; SCARCE)
263. 8 7/8" FENTON "GOOD LUCK" HEART & HORSESHOE 8 RUFFLED BOWL – DK. MARI. (SO VERY RARE; GREAT COLOR, IRID., AND DETAIL)
264. 9 1/4" FENTON DRAGON & LOTUS FLAT PLATE – DK. MARI. (TOUGH TO FIND...HAS ALWAYS BEEN RARE!)
265. 10" FENTON ROSE TREE LG. 8 RUFFLED BOWL – BLUE (SUPER, SUPER IRID.; A VERY DESIRABLE ITEM)
266. 8 7/8" FENTON CHRYSANTHEMUM 8 RUFFLED BOWL – RED (GREAT RED COLOR; SUPER EXAMPLE)
267. FENTON CHERRIES 4 FTD. OBLONG BANANA BOAT – BLUE (ONE OF THE RARER FENTON PATTERNS TO FIND)
268. 9" FENTON VINTAGE GRAPE 8 RUFFLED BOWL – CELESTE BLUE (EXTREMELY RARE & SUPER)
269. 8 1/4" FENTON G&C BALL FTD. 8 RUFFLED BOWL – CELESTE BLUE (ANOTHER RARE ITEM W/ EXCELLENT IRID.)
270. 9 1/2" FENTON PETER RABBIT FLARED PLATE – GREEN (VERY RARE; SUPER COLOR & DETAIL)
271. 9" FENTON PETER RABBIT 8 RUFFLED BOWL – GREEN (RARE; VERY DESIRABLE – NICE COLOR & DETAIL)
272. 9 3/8" FENTON PETER RABBIT FLAT PLATE – BLUE (RARE & VERY DESIRABLE; MAY HAVE A SMALL FLAKE ON EDGE)
273. 9 1/4" FENTON PETER RABBIT 8 RUFFLED BOWL – DK. MARI. (RARE & DESIRABLE; NICE SATINY FINISH)
274. 6" Tall M'burg Rosalind Stemmed 6 Ruffled Compote – Amethyst (rare & underpriced; satiny)
275. 10 3/4" TALL X 6 3/8" BASE M'BURG WILD ROSE KEROSENE LAMP W/ LADIES HEAD MEDALLION – AMETHYST (EXTREMELY RARE ITEM; GREAT PIECE; TINY CHIP ON BOTTOM RIM, SMALL CHIP ON INSIDE RIM)
276. 10 1/4" TALL X 6 1/4" BASE M'BURG WILD ROSE KEROSENE LAMP – DK. MARI. (EXTREMELY RARE; GREAT COLOR)
277. 8 3/4" TALL X 5 1/2" BASE M'BURG WILD ROSE KEROSENE LAMP – GREEN (ANOTHER RARE & VERY DESIRABLE ITEM)
278. 7 1/2" M'burg Holly Sprig Deep Round Bowl w/ T.C.E. – Amethyst (super radium example)
279. 6 1/2" M'burg Holly Sprig Tri-Cornered Bowl – Green (radium & desirable)
280. 9 3/4" TALL M'BURG OHIO STAR VASE – GREEN (VERY RARE; REALLY NICE EXAMPLE; COUPLE OF SMALL FLAKES ON THE BOTTOM EDGE)
281. 10" TALL M'BURG OHIO STAR VASE – AMETHYST (VERY RARE; ANOTHER GREAT ITEM; NICE)
282. 9 3/4" TALL M'BURG OHIO STAR VASE – MARI. (PROBABLY THE TOUGHEST COLOR TO FIND; NICE)
283. M'burg Peacock at the Urn Giant Stemmed 6 Ruffled Compote – Amethyst (rare & underpriced; has a nice satiny finish)
284. M'burg Peacock at the Urn Giant Stemmed Compote – Green (another rare item; nice & satiny)
285. 10" M'BURG PRIMROSE 6 RUFFLED BOWL – BLUE (ANOTHER RARE COLORED ITEM; SUPER TOUGH)
286. 8 3/4" M'burg Primrose Deep Round Flared Bowl – Green (super radium irid. in a rare shape)
287. 7 1/4" M'burg Holly Sprig Deep Turned-in Rose Bowl – Odd Lt. Amethyst (odd color; unusual large size; tiny flake on edge)
288. 7" M'burg Holly Sprig Deep Round "Wannabe Rose Bowl" Bowl – Green (great irid.; nice)
289. 5 1/4" M'BURG WILD FLOWER STEMMED FLARED COMPOTE – MARI. (RARE ITEM; VERY TOUGH TO FIND)
290. M'BURG POTPOURRI HANDLED MILK PITCHER – MARI. (EXTREMELY RARE ITEM; ONLY A FEW KNOWN)
291. M'burg Fleur de Lis Tri-Cornered Crimped Domed Bowl – Mari. (radium; scarce size & shape; has tiny toe chip)
292. M'BURG STRAWBERRY WREATH PUNCH BOWL SHAPED COMPOTE W/ MISSING LEAF – OLIVE GREEN (VERY RARE; TOUGH VARIATION – NEAT!!)
293. 6 3/4" M'burg Strawberry Wreath Stemmed 6 Ruffled Compote – Green (super radium example)
294. 8 5/8" M'burg Strawberry Wreath Lg. Deep Ice Cream Shaped Bowl – Green (super radium example; great irid.)
295. 9 1/2" M'BURG STRAWBERRY WREATH LG. FLARED BOWL – MARI./ VASELINE (EXTREMELY RARE & RADIUM)
296. 6 1/2" M'BURG STRAWBERRY WREATH 8 RUFFLED BOWL – MARI./ VASELINE (ANOTHER VERY DESIRABLE RADIUM EXAMPLE)
297. 6 1/8" M'burg Strawberry Wreath Rose Bowl Shaped Bowl – Mari. (rare shape; tough to find)
298. 5 3/4" M'burg Blackberry Wreath Tri-Cornered Sauce – Mari. (scarce; radium)
299. 9 5/8" M'BURG BLACKBERRY WREATH LG. ICE CREAM SHAPED BOWL – BLUE (RARE; EXCELLENT SATINY FINISH; SMALL CHIP ON A BERRY)
300. 6 1/2" M'BURG BLACKBERRY WREATH FLAT PLATE – MARI. (VERY RARE ITEM; GREAT COLOR & REALLY FLAT!!)
301. 10 1/4" M'BURG BLACKBERRY WREATH LG. 6 RUFFLED BOWL – BLUE (THE LAST OF THE MILLERSBURG PIECES; SMALL FLAKE AND CHIP ON THE COLLAR BASE)
302. N LOTUS LAND 2 HANDLED 4 SIDED BON BON – AMETHYST (VERY RARE ITEM; VERY TOUGH PATTERN; NICE)

303. 8 3/4" N Strawberry 8 Ruffled Bowl w/ Basketweave Ext. – Mari. w/ Opal (obvious on edge; nice satiny finish)
304. 9 1/4" N Strawberry Stippled Plate w/ Basketweave Ext. – Green (rare; desirable; nice color & irid.)
305. **THE N WISTERIA BANK WHIMSEY – WHITE (A FAMOUS WHIMSEY IN OUR HOBBY – SUPER RARE – HAS ALWAYS HAD THE CHIP ON THE BASE)**
306. **N MEMPHIS 8 PC. RUFFLED FRUIT BOWL SET – ICE BLUE (SUPER RARE SET; GREAT COLOR)**
307. **17 1/2" TALL X 8 3/8" TOP DIAMETER X 5 1/4" BASE N TREE TRUNK SWUNG FUNERAL VASE W/ PLUNGER BASE – PURPLE (RARE W/ GREAT COLOR, SIZE, AND IRID.; SMALL BUFF ON ONE FLAME)**
308. **13 3/4" TALL X 4 3/4" BASE N THIN RIB MID-SIZE SWUNG VASE – SAPPHIRE (RARE BASE COLOR; NICE IRID.)**
309. 7 3/8" N Fruit & Flowers 6 Ruffled Bowl w/ Basketweave Ext. – Ice Green (great color & irid.)
310. **10" N PEACOCK AT THE URN LG. ICE CREAM BOWL – SAPPHIRE (EXTREMELY DESIRABLE; EXCELLENT IRID. – SUPER!!)**
311. 10" N Peacock at the Urn Lg. Ice Cream Bowl – Lime Ice Green (rare base color; nice irid.)
312. 9 3/4" N Peacock at the Urn Lg. Ice Cream Bowl – Ice Blue (very desirable; super irid.)
313. **9 3/4" N PEACOCK AT THE URN LG. ICE CREAM BOWL – ELEC. BLUE (GREAT COLOR & IRID. – REALLY NICE EXAMPLE)**
314. 10 3/4" N Peacock at the Urn Lg. Flared Chop Plate – Amethyst (rare item in a rare shape; tough to find)
315. **12" N G&C FLAT CHOP PLATE W/ BASKETWEAVE EXT. (FROM ICE CREAM BOWL) – WHITE (EXTREMELY POPULAR ONE OF A KIND ITEM; SUPER RARE W/ GREAT IRID.)**
316. **N G&C 14 PC. RUFFLED MASTER PUNCH SET – PURPLE (RARE, POPULAR ITEM; NICE IRID.)**
317. N G&C 14 pc. Ruffled Master Punch Set – Mari. (as tough a color to find; really attractive; has a silica pop on the base)
318. Fenton Lotus & Grape 2 Handled 4 Sided Bon Bon – Blue (excellent color & detail)
319. Fenton Lotus & Grape 2 Handled 4 Sided Bon Bon – Mari./Vaseline (scarce base color for this pattern)
320. **6 1/8" FENTON LOTUS & GRAPE 3 FTD. DEEP ROUND BOWL – CELESTE BLUE (ABSOLUTELY BEAUTIFUL EXAMPLE; GREAT IRID. & STRETCH EFFECT)**
321. 7" Fenton Lotus & Grape 3 ftd. Tri-Cornered Bowl – Dk. Mari. (very scarce shape; nice irid.)
322. 6" Fenton Lotus & Grape 3 ftd. Deep Round Bowl – Mari. (super irid.)
323. 7 1/4" Fenton Lotus & Grape 3 ftd. J.I.P. Bowl – Odd Lime Green/ Mari. (odd shape w/ an odd base color)
324. 9 3/8" Fenton Lotus & Grape Flat Plate w/ Plain Ext. – Mari. (rare color for this pattern; nice example)
325. **7 3/4" FENTON 1914 B.P.O.E. PARKERSBURG ELKS FLAT PLATE – BLUE (RARE & DESIRABLE; GREAT COLOR & IRID.)**
326. **7" FENTON 1910 B.P.O.E. DETROIT ELKS 6 RUFFLED BOWL – AMETHYST (SCARCE & VERY DESIRABLE)**
327. 10" Fenton Little Flowers Lg. Bowl w/ 3 in 1 Edge – Amberina (rare color in a desirable shape)
328. 9 3/8" Fenton Little Flowers Lg. Ice Cream Bowl – Elec. Blue (super example; very impressive)
329. **FENTON HOLLY 2 SIDED HAT – RED (GREAT EXAMPLE; A BEAUTI!)**
330. 9 1/2" Fenton Holly 8 Ruffled Bowl – Red (rare and tough to find; nice color; chips on edge)
331. **9 1/4" FENTON HOLLY 8 RUFFLED BOWL – P. OPAL. (VERY RARE COLOR; TRY TO LOCATE ANOTHER... TOUGH)**
332. 9 1/8" Fenton Holly 8 Ruffled Bowl – Powder Blue (scarce base color)
333. 9 1/4" Fenton Holly 8 Ruffled Bowl – Green (nice strong color)
334. 9 1/4" Fenton Holly 8 Ruffled Bowl – Amethyst (nice irid.)
335. **9" FENTON HOLLY 8 RUFFLED BOWL – MARI./ MOONSTONE (RARE; VERY DESIRABLE; SOME SPOTTY IRID.)**
336. 9 1/4" Fenton Holly Bowl w/ 3 in 1 Edge – Aqua/ Mari. (very scarce color)
337. 9 3/4" Fenton Holly Flat Plate – Teally Green (odd base color; nice finish)
338. 9 1/8" Fenton Peacock at the Urn Flared Plate – Elec. Blue (great irid.; sorta radium & really nice)
339. 8 5/8" Fenton Peacock at the Urn 8 Ruffled Bowl – Screamer Green (now there's another new color name)
340. **9" FENTON PEACOCK AT THE URN 8 RUFFLED BOWL – PERSIAN BLUE (VERY DESIRABLE ITEM; NOT MANY KNOWN)**
341. **6 3/8" FENTON VINTAGE GRAPE 6 RUFFLED SAUCE – CELESTE BLUE (SUPER RARE IN THIS COLOR; MAY HAVE CHIPS ON EDGE)**
342. **5 1/8" U.S. GLASS FIELD THISTLE FLARED IND. BERRY BOWL – CELESTE BLUE (ANOTHER TERRIBLY RARE PASTEL ITEM; TOUGH)**
343. 8 3/4" N Three Fruits Stippled 8 Ruffled Bowl w/ Ribbed Ext. – Emerald Green (absolutely super example)
344. 8 3/4" N Three Fruits Stippled 8 Ruffled Bowl w/ Ribbed Ext. – Lime Ice Green (rare color not often sold)
345. **9 1/8" N THREE FRUITS STIPPLED FLARED PLATE W/ RIBBED EXT. – AQUA OPAL (ALWAYS DESIRABLE; NICE IRID.; NO WEAR ON FRUIT)**
346. 9 1/4" N Three Fruits Stippled Plate w/ Ribbed Ext. – Lt. Amethyst (unusual base color; nice example)
347. 9 3/8" N Three Fruits Stippled Plate w/ Ribbed Ext. – Purple (scarce; nice irid.)
348. 9" N Three Fruits Stippled Plate w/ Ribbed Ext. – Sapphire (tough to find; nice irid., but has a 3/8" chip on base)
349. 8 1/2" N Three Fruits Stippled Bowl w/ P.C.E. & Ribbed Ext. – Amethyst (scarce; nice irid.)
350. N Fruits & Flowers Stemmed 2 Handled Bon Bon w/ Basketweave Ext. – Emerald Green (super irid.; nice)
351. N Fruits & Flowers Stippled Stemmed 2 Handled Bon Bon w/ Basketweave Ext. – Elec. Blue (super irid.)
352. N Fruits & Flowers Stippled Stemmed 2 Handled Bon Bon w/ Basketweave Ext. – Dk. Mari. (great color; nice & dark)

DONALD DORAIS  
150 HIGHLAND AVENUE  
CUMBERLAND, RI 02864

# BURNS

AUCTION SERVICE



VISIT [www.necga.com](http://www.necga.com) for  
pictures and brochures.  
CLICK CARNIVAL GLASS LINKS  
and look for Burns Auction.

AUCTION FLEX AVAILABLE  
FOR THIS AUCTION

Lee Markley  
Box 306  
Mentone, IN 46539



Lot 204

Visit us at [Auctionzip.com](http://Auctionzip.com) for photos and listing. Auctioneer ID#29661



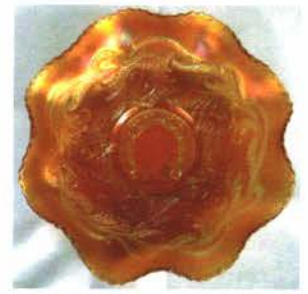
Lot 261



Lot 200



Lot 201



Lot 263



Lot 270



Lot 101



Lot 47



Lot 272



Lot 152



Lot 150



Lot 151



Lot 153