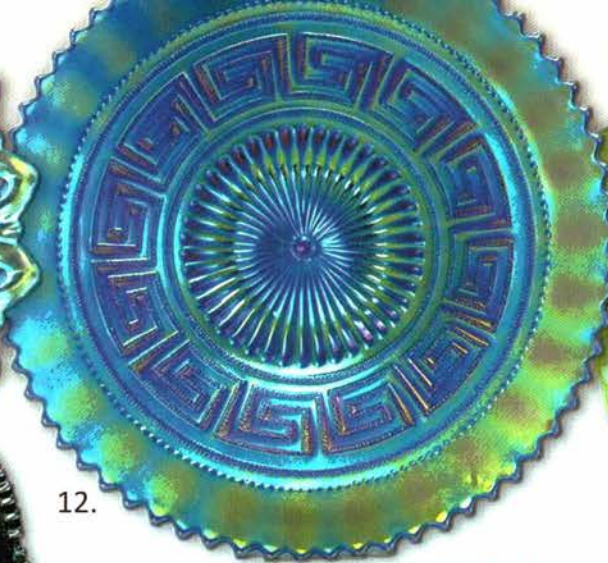
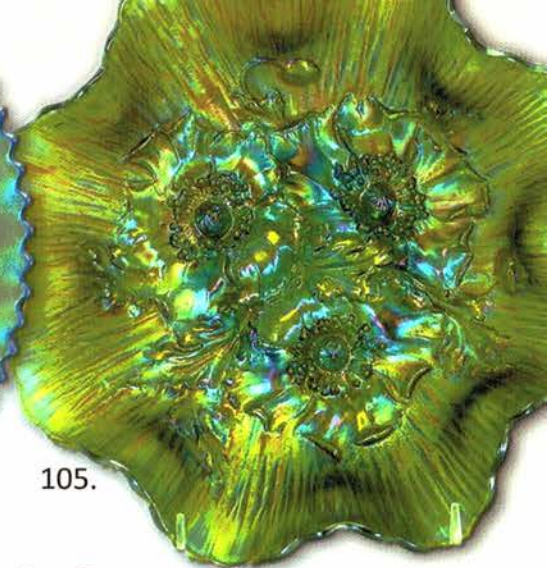




30.



12.



105.

9.

Open
to the Public

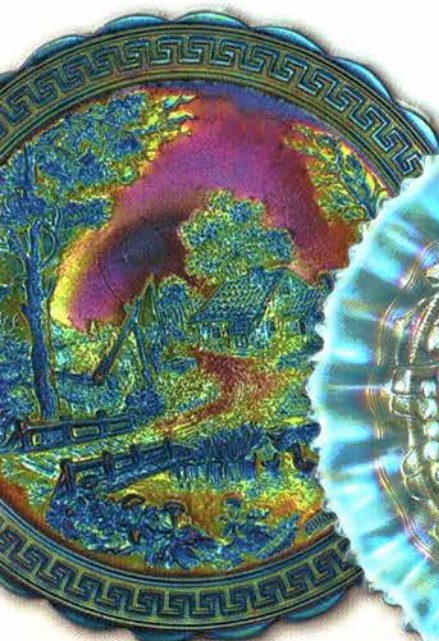
Southern California Carnival
Glass Club Convention

Saturday, March 12 9:30 a.m.
Ontario, California

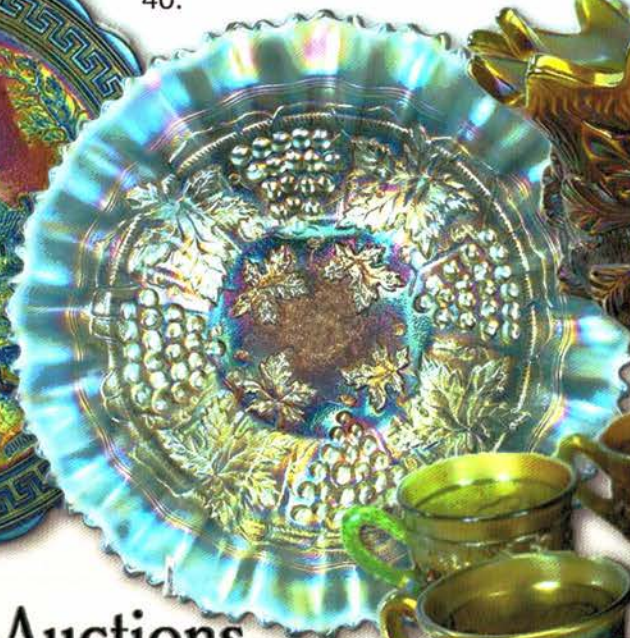
Carnival Glass 2016 Auctions

Texas Carnival Glass Club Convention
Saturday, March 19 9:30 a.m.
Dallas, Texas

86.



40.



21.



105.



Seeck Auctions
Jim & Jan Seeck
641-424-1116



SATURDAY, MARCH 12, 2016 — 9:30 A.M.

Jim & Jan Seeck

*Ayres Country Suites Hotel 1945 E. Holt Blvd.
Ontario, California 91764*

641-424-1116

★ Online absentee bidding closes, Friday, March 11 at 9 pm CST

❧ David Hamilton Estate ❧

SATURDAY, MARCH 19, 2016 — 9:30 A.M.

*Wyndham Dallas Suites- Park Central
7800 Alpha Road, Dallas, Texas 75240*

★ Online absentee bidding closes, Friday, March 18 at 9 pm CST

❧ Virgil and Lenna Wiebe Collection ❧

ABSENTEE BIDDING is available on-line through Auction Flex using our online catalog at www.seeckauction.com

NO BUYER'S PREMIUM -- OPEN TO THE PUBLIC -- EMAIL: jimjan@seeckauction.com

Lodging for the March 12 California auction

Lodging for the March 19 Texas auction

If staying at the Hotel, call direct for room reservations:
909-390-7778. Cutoff date for reservations is Feb. 18, 2016.

San Diego / Southern Calif. Convention info: Contact
Heidi Ritterbush at 805-492-3903 or hritterbush55@hotmail.com
Club Website: www.sccgc.webs.com

If staying at the Hotel, call direct for room reservations:
972-233-7600, option 2 and tell them you are with the
Texas Carnival Glass Club. For Texas Club Convention
info: Contact President Emmett Morgan at: 979-836-7896
Club Website: www.texas carnival glass.org

Terms: Cash or Check, VISA, MasterCard and Discover accepted w/proper ID. **4% Clerking Fee** on all purchases made using credit cards. Announcements made day of sale take precedence over any printed information.

Sales Tax will be charged, please bring your tax-exempt numbers.

We have 3 options for ABSENTEE BIDDING for our live auctions:

- 1) **WRITTEN OR PHONE:** If you **DO NOT** have internet access or access to our website, you can: Call us by phone to enter your bids at (641) 424-1116 **OR** By sending the numbers of the item(s) desired and the amount bid on each to: Seeck Auctions, PO Box 377, Mason City, Iowa 50402. (The mail has not been very dependable. We would prefer you call us with your bids rather than send them in a letter.)
 - All written and called in bids will be entered into the online catalog by us.
 - **Written and Phone Absentee Deadline:** Have all bids in by **Wednesday, March 9 for the March 12 auction and Wednesday, March 16 for the March 19 auction.**
- 2) **ONLINE CATALOG:** Enter your bids from our website into our online catalog through the Auction Flex system. When you get to the online catalog, you will need to login as a bidder. For the first time you will need to **set up your account** by creating a user name and password. This will include filling out a form with your name, address, etc. You will also need to **register for the auction** which will ask you to enter a valid credit card number. This card will be validated by a \$1 charge to your card. This will only happen once and you will now be able to enter bids through our online catalog by just logging in with your user name and password. You will use this user name and password for all our auctions. You are not required to pay by credit card if you are successful. This is just a safeguard for us if someone does not pay. We will let you know what you owe us through an email and you can decide how you would like to pay us.
 - **An exciting advantage of entering your bids online yourself,** is the option to be notified by email if you are outbid on an item. You will know when you are outbid on an item and you can increase your bid on that item or bid on something else. **There will be a cutoff date and time for entering your bids online, generally at 9 p.m. the night before each live auction.** After this time has passed, you will not be able to enter your bids from our online catalog.
 - **Remember,** that just because you are the high bidder in the online catalog, this does not mean you have won the item. Your bid will still need to beat the floor bidders and live phone bidders. This system will run our absentee bids just as we did before. You will still be able to buy the item lower than your online bid unless someone on the floor bids you higher.
- 3) **LIVE PHONE BIDDING:** Available on pieces with an estimated sale price of \$500 or more. If you would like to participate in live phone bidding, contact us by **the Thursday before the auction, Mar. 10 for the first auction, and Thurs., March 17 for the second auction.** We will need to know the lot# and the phone number that you can be reached at on the day of the auction. We will also need your home phone number if different than the above number. Please call with questions: 641-424-1116.
 - **There is a \$7 handling charge for each successful bid. Shipping and insurance charges are additional.** bidders will be notified by phone/email if their bid(s) are successful. This will be done 1 - 3 days after the auction.
 - **If you do not receive an item that sold for less than your bid, assume we cancelled your bid because the item had a severe manufacture problem, damage or was not listed correctly.**

BID INCREMENTS: \$1 - \$100/\$5

\$100 - \$200/\$10

\$200 - \$700/\$25

\$700 - \$1,500/\$50

\$1,500 - \$3,000/\$100

\$3,000 - \$5,000/\$250

\$5000+ Auctioneer's Discretion

David Hamilton Estate

- 1. N's Flute 7 pc. water set - marigold - 2 tumblers have nicks on base
- 2. N's Flute 4 pc. table set - green - ribs on spooner & sugar have roughness, sugar also has chip on handle
- 3. Imperial Flute ftd water pitcher - marigold
- 4. Lotus & Thistle 7" IC shaped bowl - blue
- 5. Scroll Embossed 9" ruffled bowl w/File back - smoke - nice
- 6. Imperial Grape 9" plate - marigold
- 7. M'burg Blackberry Wreath 9" 3 in 1 edge bowl - amethyst - satin, nice
- 8. Fenton's Peacock at Urn ruffled compote - vaseline - nice
- 9. M'burg Grape Leaves IC shaped bowl - green - fantastic radium irid., beautiful & rare!
- 10. Dugan Cherries ftd ruffled bowl - purple - nice
- 11. Apple Blossom Twigs IC shaped bowl - smoky lavender-super pretty irid.
- 12. Greek Key 9" plate w/ribbed back - blue - super pretty, very rare plate
- 13. Greek Key 9" plate w/BW back - marigold - nice
- 14. Stag & Holly lg size ftd deep bowl - purple - scarce color
- 15. Grape & Cable cologne bottle - ice blue - very rare & frosty, has manufacture wrinkle on top edge
- 16. Heavy Grape chop plate - purple - super pretty, a dandy!
- 17. Heavy Grape chop plate - amber - scarce
- 18. Inverted Thistle 7 pc. water set - amethyst - very rare set & highly desirable, not many full sets around
- 19. N's Flute 7 pc. salt set - marigold
- 20. Geo. W. Getts Pianos 6" advertising plate - amethyst - very scarce & nice
- 21. Carnival Hobstar 4 pc. table set - purple - super pretty set, quite hard to get
- 22. Stippled Peacock at Urn 10" ruffled bowl - super pretty, made from the IC bowl
- 23. Imperial Flute water pitcher - purple - super pretty, nick on top edge
- 24. Imperial Flute water pitcher - aqua teal - very rare pitcher in this color, not sure if I have sold another of these
- 25. Imperial Flute tumbler - aqua teal - scarce tumbler
- 26. Imperial Flute breakfast set - purple - pretty
- 27. Imperial Flute 7 pc. berry set - purple - pretty
- 28. Imperial Flute ruffled 7 pc. punch set - green - scarce
- 29. Imperial Flute ruffled 12 pc. punch set - marigold
- 30. Wild Rose Open Edge ftd nut bowl - ice blue - extremely rare, one or two known, manufacture separation on edge, see photo, no harm
- 31. Daisy Web tri-cornered crimped edge hat - marigold - super pink & yellow irid., neat piece
- 32. Stag & Holly lg size IC shaped ftd bowl - aqua - scarce, nice
- 33. Stag & Holly lg size IC shaped ftd bowl - blue
- 34. N's Thin Rib 5 1/2" squatty vase - purple - nice
- 35. Orange Tree w/trunk IC shaped bowl - marigold
- 36. NUART Homestead chop plate - amber - fantastic irid., very scarce
- 37. NUART Homestead chop plate - purple - another very beautiful chop plate
- 38. M'burg Hanging Cherries 10" 3 in 1 edge bowl - green - satin
- 39. Grape Leaves ruffled bowl - ice blue - very rare bowl, very pretty!!
- 40. Grape Leaves ruffled bowl - green - super
- 41. Hearts & Flowers ruffled compote - aqua opal - pastel & nice
- 42. Autumn Acorn 9" plate - blue - extremely rare plate, not many known and nice
- 43. Autumn Acorn 9" plate - green - also a rare plate and nice
- 44. Autumn Acorn 9" plate - marigold - the rarest color, only a few known, nice
- 45. Double Scroll console set - red - scarce set
- 46. Double Scroll console set - aqua teal - another rare color, minor pinpoint on base of bowl
- 47. Peacock & Grape ruffled bowl - red - scarce, nice
- 48. Peacock & Grape ruffled bowl - green - pretty
- 49. Tornado small size vase - purple - very nice example, scarce
- 50. Fenton's Peacock at Urn 9" plate - blue - electric & super!
- 51. Fenton's Peacock at Urn 9" plate - marigold - nice
- 52. Grape & Gothic Arches 7 pc. water set - green - very pretty set, quite scarce
- 53. Grape & Gothic Arches 7 pc. water set - blue - another scarce set, we'll give you one extra damaged tumbler
- 54. M'burg Campbell & Beesley 1911 handgrip advertising 6" plate - amethyst - very piece, nice example
- 55. Good Luck ruffled bowl w/BW back - green
- 56. Wreath Cherry 4 pc. table set - purple - butter dish bottom is signed with the rare Dugan Diamond mark, great set
- 57. Pair of Wreath Cherry tumblers - purple - one has chips on base
- 58. Poppy Show 9" plate - ice blue - pretty, scarce, very small chip on collar base
- 59. Poppy Show 9" plate - blue - nice, even irid., scarce
- 60. Poppy Show 9" plate - marigold - minor nick on poppy, a nice one
- 61. Imperial Grape 7 pc. wine set - green - nice
- 62. Wishbone 10" PCE bowl w/BW back - blue - rare color, electric irid.
- 63. Octagon 4 pc. table set - green - very rare set, butter dish bottom and sugar bottom are aqua, creamer has very minor nick on bottom of pattern near base
- 64. M'burg Strawberry Wreath tri-cornered 10" crimped edge bowl - amethyst - radium & nice, rare piece
- 65. N's Thin Rib 11" vase - sapphire - rare color, nice
- 66. N's Thin Rib 10" vase - ice green - also nice
- 67. Open Rose 9" plate - purple - scarce, nice
- 68. Open Rose 9" plate - amber - pretty
- 69. Cherry Chain chop plate - marigold - super pretty with super nice irid.!
- 70. Fluffy Peacock 7 pc. water set - amethyst - very minor heat check in body of pitcher where handle applies, no harm
- 71. Fluffy Peacock water pitcher - green - 1" heat check where handle applies
- 72. Fluffy Peacock tumbler - green
- 73. Peacocks ruffled bowl w/ribbed back - aqua opal - butterscotch & nice
- 74. Peacocks ruffled bowl w/ribbed back - sapphire - very pretty irid., super rare bowl
- 75. Peacocks ruffled bowl w/ribbed back - blue opal - not Carnival Glass
- 76. Panther ftd centerpiece bowl - blue - extremely rare bowl, not many around, nice
- 77. Corinth 9" vase - blue opal - nice
- 78. Feathered Serpent 10" ruffled bowl - blue - only iridized on back side, different
- 79. Feathered Serpent 10" 3 in 1 edge bowl - blue - nice, scarce shape
- 80. Horse Medallion JIP ftd bowl - vaseline - has pretty marigold overlay, nice piece
- 81. Horse Medallion JIP ftd bowl - blue - another really pretty one of these
- 82. Shell 9" plate - marigold - super pretty example, scarce
- 83. Vintage 3 in 1 edge bowl - aqua opal - very rare, nice opal, silver irid.
- 84. Leaf Chain 9" plate AND ruffled bowl - green - both silvery
- 85. Stippled Peacocks 9" plate w/ribbed back - blue - has electric highlights

- ___ 86. Brooklyn Bridge 6 ruffled bowl – marigold
- ___ 87. Tree Trunk 11" vase – purple - nice
- ___ 88. **Nippon PCE bowl w/ribbed back - lime green - super pretty bowl, rare color**
- ___ 89. Nippon PCE bowl w/BW back - ice blue - pretty
- ___ 90. **Garden Path Variant chop plate - peach opal - extremely rare with only a handful known, nice**
- ___ 91. Grapevine Lattice 7" ruffled bowl - purple - super pretty
- ___ 92. Stag & Holly spt ftd IC shaped bowl – green
- ___ 93. Four Pillars 10" vase - aqua opal
- ___ 94. **M'burg Big Fish ruffled bowl - amethyst - radium & super beautiful bowl!**
- ___ 95. **M'burg Big Fish 3 in 1 edge bowl - marigold - satin, scarce**
- ___ 96. Holly 9" plate - white - very nice
- ___ 97. **Davidson's Society Chocolates double handgrip 6" plate - amethyst - very nice for these, scarce**
- ___ 98. CR ashtray - blue - bottom point of "R" has been polished
- ___ 99. CR ashtray - marigold - small buffed spot on corner
- ___ 100. **M'burg Peacocks master IC shaped bowl – amethyst - radium, scarce**
- ___ 101. **M'burg Peacock at Urn master IC bowl - green - satin, nice**
- ___ 102. Stretch Glass Trumpet Twist console set - celeste blue
- ___ 103. Stretch Glass Ash Tray set – vaseline - 4 pc. set
- ___ 104. Stretch Glass 7 pc. nut set - celeste blue
- ___ 105. **Poppy Show ruffled bowl - green - super pretty, rare and hard to find**
- ___ 106. Windmill lg size ruffled bowl - green - silvery
- ___ 107. **M'burg Peacock at Urn 10" ruffled bowl - amethyst - satin, nice**
- ___ 108. Enameled Orchid 7 pc water set - ice green - scarce set, one tumbler has minor nick on bottom
- ___ 109. **Persian Garden 11" deep ruffled bowl - purple - this is not a fruit bowl top**
- ___ 110. Stippled Three Fruits Medallion spt ftd ruffled bowl - aqua opal
- ___ 111. **Inverted Thistle chop plate - amethyst - very rare, just a few known, nice**
- ___ 112. Wreathed Cherry 7 pc. banana boat shaped berry set - white w/red cherries - one sauce has chip on base
- ___ 113. Wreathed Cherry 6 pc. banana boat shaped berry set - purple
- ___ 114. **Garden Path Variant 10" ruffled bowl - purple - scarce, pretty!**
- ___ 115. Garden Path Variant 10" ruffled bowl - peach opal
- ___ 116. **Inverted Thistle lg size ruffled compote - green - one of only a handful known, very rare item, neat**
- ___ 117. Beaded purse w/3 coin pursed inside - Made in Hong Kong
- ___ 118. **N's Stippled Peacock at Urn master IC bowl - blue - scarce item & nice**
- ___ 119. **N's Stippled Peacock at Urn master IC bowl - pastel marigold - nice**
- ___ 120. N's Peacock at Urn master IC bowl – custard - not Carnival Glass, we'll give you a stippled sauce that has polished base
- ___ 121. **Rose Show ruffled bowl - lime green opal - super pretty irid. on this rare bowl, lots of opal in the roses**
- ___ 122. Rose Show ruffled bowl - white - scarce
- ___ 123. Heavy Grape master ruffled berry bowl - purple
- ___ 124. **Horse Medallion 7" plate - powder blue - very rare plate, super nice**
- ___ 125. Stippled Three Fruits 9" plate w/ribbed back - purple - one point has been buffed on side
- ___ 126. Stippled Three Fruits 9" plate w/ribbed back - marigold - very pretty
- ___ 127. **N's Peacock at Urn chop plate - purple - very nice example, rare**
- ___ 128. Imperial Grape 8 pc. berry set - green - has 2 masters, 6 small
- ___ 129. Holly 9" plate - blue - very pretty example, epoxied chip on base
- ___ 130. **Springtime 4 pc. table set – green - rare set**
- ___ 131. Oriental Poppy 7 pc. tankard water set - purple - highly desirable, nice
- ___ 132. Fleur de Lis dome ftd 10" ruffled bowl - smoke - pretty
- ___ 133. **Peacocks 9" plate w/ribbed back - blue - has electric highlights**
- ___ 134. Peacocks 9" plate w/ribbed back - purple - pretty
- ___ 135. Peacocks 9" plate w/ribbed back - ice green - nice
- ___ 136. Grape & Cable whiskey decanter – purple
- ___ 137. Dugan Vintage dome ftd 9" plate - marigold - rare piece & pretty
- ___ 138. **Little Daisies 10" ruffled bowl - blue - very rare Fenton pattern, highly desirable, a great opportunity**
- ___ 139. Open Rose 8" ruffled bowl - smoky blue - pretty irid.
- ___ 140. Beetle ashtray - purple - scarce
- ___ 141. Beetle ashtray - marigold - scarce, pretty
- ___ 142. Good Luck PCE bowl w/ribbed back - purple - very pretty
- ___ 143. Grape & Cable Variant 9" plate w/BW back - marigold - mold roughness on base
- ___ 144. M'burg Hobnail Swirl rose bowl - amethyst - pretty example & scarce
- ___ 145. M'burg Hobnail Swirl rose bowl - marigold - very pretty for these
- ___ 146. M'burg Primrose bowl - green AND M'burg Whirling Leaves bowl - marigold - both lack irid., Primrose has edge chip
- ___ 147. **Embroidered Mums ruffled bowl w/ribbed back- aqua - pretty for this rare color, one point repaired**
- ___ 148. Embroidered Mums ruffled bowl w/ribbed back - blue - very pretty
- ___ 149. **Dragon & Lotus 3 in 1 edge bowl - peach opal - scarce, nice**
- ___ 150. Holly ruffled bowl - red - silvery
- ___ 151. **Fenton's Peacock at Urn ruffled bowl - green - electric & fantastic, as good as they get!**
- ___ 152. Fenton's Peacock at Urn 6 ruffled bowl - blue - super pretty
- ___ 153. Fenton's Peacock at Urn 6 ruffled bowl - light marigold - lacks irid.
- ___ 154. **Wishbone & Spades chop plate - purple - very pretty example of this rare chop plate**
- ___ 155. Luster Rose 4 pc. berry set - green
- ___ 156. Persian Medallion 3 in 1 edge bowl - blue - silvery
- ___ 157. Floral & Grape 7 pc. water set - blue
- ___ 158. Cosmos & Cane butter dish - white - scarce, nice
- ___ 159. **Little Flowers chop plate - marigold - light irid., very scarce**
- ___ 160. **Lewis 66 Rye Utah Liquor Co. handgrip advertising plate - amethyst - super nice example!**
- ___ 161. Thistle IC shaped bowl - marigold
- ___ 162. **Singing Birds 7 pc. water set - green - very pretty, will give you an extra tumbler with a little damage**
- ___ 163. Holly IC shaped bowl - blue - nice
- ___ 164. Mae West console set – red - scarce set
- ___ 165. Captive Rose 3 in 1 edge bowl - blue - silvery
- ___ 166. **N's Peacock at Urn master IC bowl - ice green - scarce**
- ___ 167. **N's Peacock at Urn master IC bowl - purple - super example**
- ___ 168. **N's Peacock at Urn master IC bowl – marigold - fantastic, dark & super, some may call pumpkin**
- ___ 169. N's Peacock at Urn master IC bowl - marigold - pastel irid.
- ___ 170. Singing Birds 4 pc. table set - purple - manufacture roughness on top of sugar lid
- ___ 171. **Petal & Fan lg size ruffled bowl - marigold - has fantastic pink & yellow irid., the yellow is amazing!**
- ___ 172. Scroll Embossed 9" plate – purple - has a lot of pretty green irid.
- ___ 173. **Stippled Strawberry ruffled bowl w/ribbed back - lime green - very scarce bowl, nice**
- ___ 174. Ski Star lg size ruffled bowl - purple
- ___ 175. Scales ruffled bowl - blue opal
- ___ 176. Lot of 8 Luster Rose tumblers - purple - 2 tumblers are damaged

- ___ 177. Orange Tree w/Trunk 9" plate - blue - super pretty
- ___ 178. Orange Tree w/Trunk 9" plate - white - has sun colored lavender tint, has light irid.
- ___ 179. Wreath of Roses whimsy flared out punch bowl top w/ Vintage interior - green - rare whimsy shape, bases are available
- ___ 180. Two Flowers lg size ftd ruffled bowl - marigold - silvery
- ___ 181. Grape & Gothic Arches 4 pc. table set - green - super pretty scarce set
- ___ 182. Dragon & Lotus IC shaped bowl - blue
- ___ 183. Lotus & Grape 9" plate - green - scarce, minor rubs on grapes
- ___ 184. Rising Sun 7 pc. water set - blue - very rare set
- ___ 185. Lot of 2 Flute toothpicks - purple & green - chip on side of rib on green
- ___ 186. Persian Medallion chop plate - blue - scarce
- ___ 187. Rustic 7" squatty vase - white
- ___ 188. Persian Garden ruffled fruit bowl top - marigold
- ___ 189. Imperial Grape 6" plate - aqua teal - rare color for these
- ___ 190. N's Peacock at Urn 10" ruffled bowl - marigold - super pretty, made from IC bowl
- ___ 191. M'burg Fleur de Lis dome ftd IC shaped bowl - green - radium & nice, has a couple of typical nicks on saw tooth base
- ___ 192. Four Flowers 10" ruffled bowl - purple - super pretty, a beauty
- ___ 193. Octagon 11" square shaped bowl - green - unusual piece
- ___ 194. Mikado ruffled compote - powder blue - rare color
- ___ 195. Isaac Benesch & Sons ruffled advertising bowl - amethyst - scarce
- ___ 196. Fircone large vase - marigold - scarce vase
- ___ 197. M'burg Sunflower pin tray - green - maybe as pretty of one as I have seen, has manufacture extra glass on base rim
- ___ 198. Dandelion 6 pc. water set - purple - crack in handle where attaches
- ___ 199. Floral & Optic ftd chop plate - clambroth
- ___ 200. Greek Key ruffled bowl w/ribbed back - blue - has very pretty electric highlights
- ___ 201. Pond Lily bonbon - white - scarce color, small chip on side of handle
- ___ 202. Six Sided candlesticks - green - scarce color
- ___ 203. Imperial Grape lg size ruffled bowl - purple
- ___ 204. Dandelion / Knights Templar mug - ice green - scarce color, nice for these
- ___ 205. Holly 3 in 1 edge bowl - aqua teal - very scarce color
- ___ 206. Good Luck ruffled bowl w/BW back - horehound - rare color, nice
- ___ 207. Persian Medallion 10" 3 in 1 edge bowl - blue
- ___ 208. Hearts & Flowers 9" plate w/ribbed back - green - scarce plate, nice

- ___ 209. Hearts & Flowers 9" plate w/ribbed back - marigold - scarce, nice
- ___ 210. Vintage powder jar - marigold
- ___ 211. Stippled Grape & Cable Variant PCE bowl w/ribbed back - blue - very rare color, nice
- ___ 212. Three Fruits 9" plate w/plain back - green - pretty, some rubbing on fruit
- ___ 213. Acanthus deep round bowl - purple - super nice
- ___ 214. M'burg Trout & Fly ruffled bowl - lavender - super pretty lavender satin irid., rare color
- ___ 215. Imperial Flute punch bowl & base - marigold - crack in base
- ___ 216. Stippled Peacocks 9" plate w/ribbed back - blue - scarce
- ___ 217. Fenton Peacock at Urn 9" plate - marigold
- ___ 218. Flute 7 pc. berry set - purple - pretty
- ___ 219. Imperial Grape 9" plate - marigold
- ___ 220. Apple Blossom Twigs IC shaped bowl - smoky lavender - super pretty
- ___ 221. Fleur de Lis dome ftd 10" ruffled bowl - smoke
- ___ 222. Heavy Grape chop plate - purple - super nice
- ___ 223. Rose Show 9" plate - green - very, very pretty example, tiny pinpoint on top of one rose
- ___ 224. Rose Show 9" plate - blue - very nice example
- ___ 225. Octagon 7 pc. wine set - purple - outstanding, rare set, do not sell these often
- ___ 226. Stippled Peacocks PCE bowl w/ribbed back - marigold - covered w/pink irid., beautiful!
- ___ 227. Lot of 3 non Carnival bowls
- ___ 228. Lot of 3 non Carnival pcs - red
- ___ 229. Lot of 4 misc. pcs.
- ___ 230. Pair of Fenton #449 8 1/2" candlesticks - red - non Carnival
- ___ 231. Lined Lattice turned in 5" vase - vaseline opal - non Carnival
- ___ 232. Lot of 3 Jeweled Heart pcs. - red - non Carnival
- ___ 233. Jeweled Heart 7 pc. water set - blue opal - non Carnival
- ___ 234. Enameled Pigeon Blood 7 pc. water set - red - one tumbler has nick, non Carnival
- ___ 235. Enameled 7 pc. tankard water set - blue - non Carnival
- ___ 236. Enameled decorated 10" brides bowl - non Carnival
- ___ 237. Alaska pattern 4 pc. table set - blue opal - non Carnival
- ___ 238. Alaska pattern banana boat shape - blue opal - non Carnival
- ___ 239. Peacock at the Fountain whimsy flared out fruit bowl - frosted green glass - non Carnival, unusual
- ___ 240. Lot of 3 black glass lifts
- ___ 241. Pair of contemporary Carnival Glass items
- ___ 242. Chrysanthemum Sprig cruet - blue custard - non Carnival
- ___ 243. Chrysanthemum Sprig 4 pc table set - blue custard - non Carnival, chip on base of butter dish
- ___ 244. Chrysanthemum Sprig compote - blue custard - non Carnival
- ___ 245. Chrysanthemum Sprig toothpick - blue custard - non Carnival
- ___ 246. Lot of 2 pcs. of Carnival Glass - both have damage

SATURDAY, MARCH 19, 2016 — 9:30 A.M.

Virgil and Lenna Wiebe Collection

- ___ 1. Sunk Daisy 5" ftd rose bowl - purple - super pretty, typical minor nick on edge of foot, probably in making
- ___ 2. Sunk Daisy 3" ftd rose bowl - marigold - pretty, has typical nick
- ___ 3. Persian Medallion rose bowl - blue - pretty, couple of manufacture rough spots on top edge
- ___ 4. Persian Medallion rose bowl - white
- ___ 5. Persian Medallion rose bowl - marigold
- ___ 6. Acanthus deep round bowl - smoke - nice
- ___ 7. Imperial Grape ruffled bowl - lavender
- ___ 8. Imperial Grape ruffled bowl - marigold
- ___ 9. Concave Flute rose bowl - aqua
- ___ 10. Blackberry Block 3 pc. tankard water set - amethyst - pitcher is super, a beauty
- ___ 11. Dandelion Knight's Templar mug - ice green
- ___ 12. Dandelion Knight's Templar mug - ice blue
- ___ 13. Dandelion mug - aqua opal - butterscotch
- ___ 14. Imperial Grape 9" plate - purple - super pretty, came out of the Morgan collection, a dandy!
- ___ 15. Waterlily ftd ruffled sauce - lime green opal - very scarce sauce & nice
- ___ 16. Waterlily ftd ruffled sauce - red - scarce
- ___ 17. Waterlily ftd ruffled sauce - aqua - scarce color
- ___ 18. Waterlily ftd ruffled sauce - green
- ___ 19. Waterlily ftd ruffled sauce - blue
- ___ 20. Waterlily ftd ruffled sauce - marigold
- ___ 21. Tree Trunk 17 1/2" funeral vase - marigold - one of the rarer colors of these vases, highly desirable
- ___ 22. Big Basketweave 9 1/2" vase - sapphire - scarce
- ___ 23. Big Basketweave 9 1/2" vase - purple - nice

- ___ 24. Embroidered Mums ruffled bowl w/ribbed back - aqua opal - rare bowl
- ___ 25. Embroidered Mums ruffled bowl w/ribbed back - aqua - very pretty, very rare color
- ___ 26. Embroidered Mums ruffled bowl w/ribbed back - purple - scarce
- ___ 27. Embroidered Mums ruffled bowl w/ribbed back- blue- nice
- ___ 28. Embroidered Mums ruffled bowl w/ribbed back - marigold - mold roughness on base
- ___ 29. Nautilus 7" vase - purple - scarce, nice
- ___ 30. Imperial Grape 9 pc. punch set - purple - very rare set & nice
- ___ 31. Imperial Grape punch bowl & base - amber - rare color for these
- ___ 32. Imperial Grape punch bowl & base - green - marked IG
- ___ 33. Imperial Grape punch bowl & base - marigold
- ___ 34. Daisy & Drape flared out vase - blue - scarce, very nice
- ___ 35. Daisy & Drape flared out vase - aqua opal - butterscotch, pretty
- ___ 36. Holly 9" plate - green - scarce color, nice
- ___ 37. Holly 9" plate - amethyst - nice
- ___ 38. Holly 9" plate - blue
- ___ 39. Holly 9" plate - marigold
- ___ 40. Stippled Grape & Cable PCE bowl w/ribbed back - aqua opal - super pretty example, irid. is very nice, another from the Morgan auction
- ___ 41. Stippled Grape & Cable Variant PCE bowl w/ribbed back - ice blue - scarce, nice
- ___ 42. Stippled Grape & Cable Variant PCE bowl w/ribbed back- blue - nice
- ___ 43. Fashion breakfast set - smoke - scarce
- ___ 44. Blackberry Open Edge 7 1/2" whimsey vase - blue - very scarce, minor nick on base
- ___ 45. Blackberry Open Edge 8" whimsey vase - marigold - has nick on base
- ___ 46. Lattice & Poinsettia ftd ruffled bowl w/ribbed back - ice blue - very pretty bowl, rare
- ___ 47. Lattice & Poinsettia ftd ruffled bowl w/ribbed back - blue - has electric highlights
- ___ 48. Lattice & Poinsettia ftd ruffled bowl w/ribbed back - marigold - nice
- ___ 49. Lattice & Poinsettia ftd ruffled bowl - white opal - not Carnival Glass
- ___ 50. N's Eight Sided bushel basket - ice green
- ___ 51. N's Eight Sided bushel basket - purple
- ___ 52. Cosmos & Cane 4 pc. table set - honey amber - great set, beautiful
- ___ 53. Captive Rose 9" plate - amethyst - scarce color
- ___ 54. Captive Rose 9" plate - blue - nice
- ___ 55. Captive Rose 9" plate - marigold - pretty
- ___ 56. Octagon small size water pitcher - purple - hard pitcher to find, nice
- ___ 57. Octagon tumbler w/collar base - purple - scarce
- ___ 58. Palm Beach whimsey rose bowl - iridized goofus or amethyst
- ___ 59. Heavy Grape chop plate - purple - beautiful!
- ___ 60. Drapery 7 1/4" vase - aqua opal - absolutely beautiful, minor spot of epoxy on foot
- ___ 61. Drapery 8" vase - aqua - pretty, manufacture peeling on top edge
- ___ 62. Drapery 8" vase - ice blue - chip on foot
- ___ 63. Drapery 7" vase - ice green - chips on foot
- ___ 64. Drapery 8 1/2" vase - blue - pretty, minor nick on foot
- ___ 65. Drapery 8" vase - marigold - chip on foot
- ___ 66. M'burg Whirling Leaves square shaped crimped edge bowl- amethyst - radium, very rare shape, highly desirable
- ___ 67. M'burg Whirling Leaves tri-cornered crimped edge bowl - amethyst - radium, super pretty, very small flake on back on point
- ___ 68. M'burg Whirling Leaves 3 in 1 edge bowl - amethyst - radium, also a rare edge
- ___ 69. M'burg Whirling Leaves ruffled bowl - marigold - satin
- ___ 70. Peacocks 9" plate w/ribbed back - ice blue - very scarce, nice
- ___ 71. Peacocks 9" plate w/ribbed back - ice green - nice
- ___ 72. Peacocks 9" plate w/ribbed back - blue - chip on back of point
- ___ 73. Peacocks 9" plate w/ribbed back - purple - nice
- ___ 74. Corn bottle - smoke - pretty
- ___ 75. Heavy Grape 8" ruffled bowl - blue - very rare color for these and nice!
- ___ 76. Kittens square shaped toothpick - marigold
- ___ 77. Imperial Grape water pitcher & 1 tumbler - purple - nice matching set w/blue irid.
- ___ 78. Palm Beach 7" plate - iridized goofus, used to call this amethyst, scarce
- ___ 79. Stippled Three Fruits ruffled bowl w/ribbed back - green - very scarce color, nice
- ___ 80. Circle Scroll butter dish, spooner & creamer - marigold - rare set, handle is cracked on creamer
- ___ 81. Stippled Strawberry PCE bowl w/BW back - horehound - rare color, very pretty example
- ___ 82. Stippled Strawberry PCE bowl w/ribbed back - blue - scarce
- ___ 83. Stippled Strawberry PCE bowl w/ribbed back - marigold
- ___ 84. Knotted Beads 9" crimped edge vase- aqua- rare color, nice
- ___ 85. Knotted Beads 10" crimped edge vase - amber - rare color for these
- ___ 86. NUART Homestead chop plate - purple - absolutely fantastic! great mold work, beautiful iridescence!
- ___ 87. Kittens cup & saucer - marigold
- ___ 88. M'burg Sunflower pin tray - green - very minor polished spot on back
- ___ 89. Fruits & Flowers bonbon - aqua opal - butterscotch & nice, tiny polished spot on base
- ___ 90. Fruits & Flowers bonbon - ice blue - nice
- ___ 91. Fruits & Flowers bonbon - blue - electric highlights
- ___ 92. Fruits & Flowers bonbon - purple - pretty
- ___ 93. Poppy Show 9" plate - ice blue - scarce
- ___ 94. Poppy Show 9" plate - marigold - super pretty
- ___ 95. Miniature Morning Glory 4 1/4" vase - purple - super short, super pretty, super cute
- ___ 96. Grape & Cable hatpin holder - green
- ___ 97. Grape & Cable hatpin holder - purple
- ___ 98. Grape & Cable hatpin holder - marigold
- ___ 99. Grape & Cable hatpin holder - camphor glass - not Carnival Glass, age?
- ___ 100. Stippled Three Fruits Medallion spt ftd ruffled bowl - aqua opal - two sharp points
- ___ 101. Three Fruits Medallion spt ftd ruffled bowl - ice blue - scarce color
- ___ 102. Peacock at the Fountain 4 pc. table set - purple - minor nick on inside lid of sugar bowl
- ___ 103. Constellation ruffled compote - purple - scarce, nice
- ___ 104. Constellation ruffled compote - marigold
- ___ 105. Acorn Burrs 8 pc. punch set - green - rare set, bowl is just super
- ___ 106. Ripple 9" vase - purple - 3 3/8" base
- ___ 107. Ripple 8" vase - amber - 3 3/8" base
- ___ 108. Blackberry Open Edge 7" plate - marigold - rare plate, minor crack in webbing
- ___ 109. Singing Birds 4 pc. water set - green - scarce & desirable
- ___ 110. Rose Garden 5" letter vase - blue - very minor nick on edge of base, probably in making
- ___ 111. 1910 Detroit Elks ruffled bowl - blue - scarce
- ___ 112. Rococo vase - marigold
- ___ 113. Rustic 18 1/2" funeral vase - blue - very scarce, pretty
- ___ 114. Wishbone ftd ruffled bowl - purple
- ___ 115. Beaded Bullseye 11" vase - purple - pretty
- ___ 116. Stippled Grape & Cable Variant / Old Rose Distilling 9" plate w/ribbed back - green - super pretty for these
- ___ 117. Stippled Grape & Cable Variant 9" plate w/ribbed back - purple - scarce color

- ___ 118. Diamond Point 10" vase - blue - scarce color
- ___ 119. Horse Medallion 7" plate - marigold - nice
- ___ **120. M'burg Bullseye & Loop 7" squatty vase - amethyst - super nice vase, quite rare**
- ___ 121. Soutache dome ftd ruffled bowl - peach opal
- ___ 122. Orange Tree 6 pc. water set - blue - chips on feet of pitcher, minor pinpoint on foot of one tumbler
- ___ 123. Grape & Cable Variant 9" plate w/BW back - green - very pretty
- ___ **124. Thin Rib & Drape 7" vase - purple - super, ribbing has been stretched out so is hard to see**
- ___ 125. Feathered Serpent 10" IC shaped bowl - marigold - nice
- ___ 126. Peacocks PCE bowl w/ribbed back - blue
- ___ **127. Stippled Peacocks PCE bowl w/ribbed back - marigold - very minor nick on point**
- ___ 128. N's Bushel Basket - aqua opal
- ___ 129. N's Bushel Basket - lavender
- ___ **130. Stippled Good Luck ruffled bowl w/ribbed back - blue - very pretty**
- ___ 131. Grape & Cable powder jar - green
- ___ 132. Grape & Cable powder jar - purple
- ___ **133. Acorn Burrs 7 pc. water set - purple - very pretty set**
- ___ 134. M'burg Hobnail Swirl 10" vase - amethyst
- ___ 135. Persian Medallion IC shaped bowl - blue - scarce shape
- ___ **136. Three Row Open Edge ruffled bowl - celeste blue - nice**
- ___ 137. Stippled Strawberry 9" plate w/ribbed back - purple - nice, scarce
- ___ 138. File whimsey vase - marigold - kind of tough
- ___ 139. M'burg Rays & Ribbons crimped edge ruffled bowl - marigold - radium, very pretty
- ___ 140. Tornado large size vase - green - scarce, small burst by seam
- ___ 141. Orange Tree hatpin holder - blue - super pretty, 2 feet have minor nicks, 1 foot has a manufacture issue
- ___ **142. Wishbone PCE 10" bowl - blue - electric, super, teeny tiny nick on edge**
- ___ 143. Imperial Flute 7 pc. water set - marigold - 2 tumblers have large chips, 2 have rough bottoms
- ___ **144. Hearts & Flowers ruffled bowl w/ribbed back - blue - very pretty, couple of rough spots between points**
- ___ **145. Hearts & Flowers ruffled bowl w/ribbed back - ice blue**
- ___ 146. M'burg Peacock 10" ruffled bowl - amethyst - radium, nice
- ___ 147. Columbia dome ftd plate - marigold
- ___ 148. Grape & Cable cracker jar - purple
- ___ 149. Drapery rose bowl - marigold - nice
- ___ **150. Morning Glory 15" funeral vase - purple - nice**
- ___ 151. Morning Glory 13" funeral vase - marigold
- ___ 152. Heavy Grape 10" ruffled bowl - purple - nice
- ___ **153. Diamond Point bushel basket - marigold - very pretty example of this rare basket!**
- ___ 154. Lined Lattice 9" vase - purple
- ___ 155. M'burg Seaweed 3 in 1 edge 10" bowl - marigold - satin
- ___ **156. Imperial Grape water carafe - purple - pretty**
- ___ 157. Smooth Rays 10" ruffled bowl w/Jewel Heart back - purple - pretty
- ___ 158. Grape & Cable 4 pc. table set - purple - butter dish is only perfect piece
- ___ 159. Grape & Cable butter dish - green
- ___ **160. Stippled & Banded Grape & Cable banana boat - blue - scarce item**
- ___ 161. M'burg Rays & Ribbons IC shaped bowl - marigold - radium, nice
- ___ **162. Daisy & Drape turned in vase - purple - scarce, nice**
- ___ 163. Daisy & Drape turned in vase - marigold
- ___ 164. Daisy & Drape turned in vase - white
- ___ 165. Three Fruits ruffled bowl w/BW back - green - nice
- ___ 166. Kittens ruffled dish - marigold
- ___ **167. Grape & Cable water pitcher & 1 tumbler - green - nice**
- ___ 168. Grape & Cable 4 pc. water set - purple
- ___ 169. Orange Tree 5 pc. punch set - marigold - one cup has nick but bowl is beautiful
- ___ 170. Captive Rose ruffled compote - white
- ___ 171. Stippled Grape & Cable Variant ruffled bowl w/ribbed back - purple
- ___ 172. Tree Trunk 7 1/2" squatty vase - green
- ___ **173. Cobblestone ruffled bowl - purple - pretty**
- ___ 174. N's Thin Rib 6 1/2" squatty vase - green
- ___ 175. N's Thin Rib 6 1/2" squatty vase - purple
- ___ **176. Rose Show ruffled bowl - aqua opal - pastel, light on iridescence**
- ___ **177. Rose Show ruffled bowl - marigold - nice**
- ___ 178. M'burg Primrose ruffled bowl - green - radium, nice
- ___ 179. Smooth Panels 13" vase - marigold - 4 1/2" base
- ___ 180. Smooth Panels 7 1/2" squatty vase - smoke - 3 1/2" base, 6 1/4" mouth
- ___ **181. Acorn Burrs 4 pc. table set - purple - nice set, repair on bottom of lid on butter**
- ___ 182. N's Peacock at Urn IC sauce - ice blue - silvery
- ___ 183. N's Peacock at Urn IC sauce - purple
- ___ 184. N's Peacock at Urn IC sauce - marigold
- ___ 185. N's Stippled Peacock at Urn IC sauce - blue
- ___ 186. Beaded Cable rose bowl - aqua opal
- ___ **187. Diamond Lace 7 pc. water set - purple - pretty**
- ___ 188. M'burg Rays & Ribbons ruffled bowl - green - satin
- ___ **189. N's Peacock at Urn master IC bowl - purple - nice one**
- ___ 190. Concord ruffled bowl - marigold - nice
- ___ 191. Tree Trunk 13" mid size vase - green - has pouring spout
- ___ 192. Tree Trunk 12 1/2" mid size vase - purple - nice
- ___ 193. Grape Arbor tankard water pitcher & 1 tumbler - marigold
- ___ 194. Luster Rose butter dish - purple - pretty, very minor nick on top of knob
- ___ 195. Fenton Peacock at Urn 9" plate - marigold
- ___ **196. Poppy Show ruffled bowl - blue - scarce, pretty**
- ___ 197. Grape & Cable cologne bottle - marigold - nice
- ___ 198. M'burg Rosalind 10" ruffled bowl - amethyst - satin, nick on base
- ___ 199. Strawberry 9" plate w/BW back - purple
- ___ **200. Peacocks ruffled bowl w/ribbed back - aqua opal - pretty**
- ___ 201. Peacocks ruffled bowl w/ribbed back - lavender - minor scratch on surface
- ___ 202. Leaf Columns 6 1/2" squatty vase - green
- ___ 203. Peacock & Grape 3 in 1 edge bowl - green - nice
- ___ **204. Coin Spot ruffled compote - celeste blue - pretty, stretchy irid., chip on base**
- ___ 205. Grape & Cable PCE bowl w/BW back - marigold - nice
- ___ 206. Fishscale & Beads 7" plate - purple - scarce
- ___ **207. M'burg Rosalind 10" IC shaped bowl - marigold - satin, pretty, quite hard to find**
- ___ **208. Parlor Panels 8" vase - smoke - nice**
- ___ 209. Parlor Panels 5 1/4" vase - marigold - very squatty
- ___ 210. Sunflower spt ftd ruffled bowl - green - super pretty
- ___ 211. Sunflower spt ftd ruffled bowl - purple - super pretty, very minor manufacture split on edge
- ___ 212. Plaid low IC shaped bowl - marigold - could almost be called a plate
- ___ 213. Ripple 9" vase - aqua teal - 2 7/8" base
- ___ **214. Stippled Strawberry ruffled bowl w/ribbed back - lime green - rare color & nice**
- ___ 215. Stippled Strawberry ruffled bowl w/ribbed back - marigold - very minor sharp point
- ___ 216. Drapery Variant 9" vase - marigold - nice
- ___ **217. Star of David ruffled bowl - purple - super**
- ___ 218. Double Scroll candlesticks - red - scarce
- ___ **219. M'burg Tulip & Scroll 6 1/2" squatty vase - amethyst - scarce, very pretty, neat vase**

SEECK AUCTIONS
P.O. BOX 377
MASON CITY, IA 50401

PRESORTED
FIRST CLASS MAIL
US POSTAGE
PAID
MAIL EXPEDITORS



138.
March 12

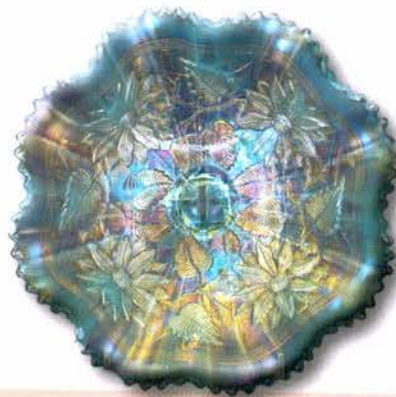
2016 CARNIVAL GLASS AUCTIONS

Sat., March 12 9:30 a.m.
Ontario, California
Sat., March 19 9:30 a.m.
Dallas, Texas

T4 P1 114
LEE MARKLEY
BOX 306
MENTONE IN 46539-0306



- ___ 220. Carolina Dogwood ruffled bowl - blue opal
- ___ 221. Imperial Grape 6" plate - purple
- ___ 222. Cosmos & Cane spittoon shaped compote - honey amber - minor nick & heat check on base
- ___ 223. Holly IC shaped bowl - blue
- ___ 224. Six Sided candlestick - green
- ___ 225. Stippled Three Fruits PCE bowl w/ribbed back - blue - very pretty w/electric highlights
- ___ 226. Stippled Three Fruits PCE bowl w/ribbed back - marigold
- ___ 227. Floral & Grape 4 pc. water set - blue - pitcher is pretty
- ___ 228. Peacock & Grape ruffled bowl - peach opal - super pretty
- ___ 229. Daisy Web ruffled hat - purple - beautiful
- ___ 230. Circle Scroll JIP hat - marigold - nice
- ___ 231. Shell & Sand deep ruffled bowl - purple
- ___ 232. Stippled & Banded Grape & Cable dresser tray - marigold - hard to find
- ___ 233. Round Up 9" plate - blue
- ___ 234. M'burg Seacoast pin tray - amethyst - rare & desirable
- ___ 235. Stippled Three Fruits 9" plate w/ribbed back - lavender
- ___ 236. Circle Scroll 8" vase - purple - scarce, nice
- ___ 237. Circle Scroll 7 1/2" vase - marigold - also nice
- ___ 238. Starburst spittoon - blue - Riihimaki
- ___ 239. M'burg Rosalind 10" 3 in 1 edge bowl - marigold - satin, nice
- ___ 240. Fern Brand Chocolates advertising card tray shaped dish - amethyst - scarce, nice
- ___ 241. Palm Beach 7" whimsey vase - marigold - neat vase
- ___ 242. Honeycomb & Beads tri-cornered crimped edge dish - purple - pretty
- ___ 243. N's Thin Rib 11" vase - sapphire - very scarce vase, nice
- ___ 244. N's Dandelion tankard water pitcher - purple - scarce, nice
- ___ 245. M'burg Bullseye & Loop 10" vase - amethyst - scarce
- ___ 246. Scroll & Flower Panels vase - marigold
- ___ 247. M'burg Courthouse ruffled bowl - amethyst - radium, nice
- ___ 248. Concord 3 in 1 edge bowl - green - epoxy on small spot on seam of base
- ___ 249. N's Thin Rib 14" mid size vase - green
- ___ 250. N's Thin Rib 13" mid size vase - marigold
- ___ 251. Stippled Grape & Cable humidor - renninger blue - very scarce item, nice
- ___ 252. N's Corn vase w/stalk base - ice green
- ___ 253. Amaryllis dome ftd miniature compote - purple - highly desirable
- ___ 254. Grape & Cable pin tray - marigold
- ___ 255. Concord 9" plate - amethyst - very scarce & highly desirable
- ___ 256. Tree Trunk 10" vase - lime green - scarce
- ___ 257. Fern ruffled compote - green - nice
- ___ 258. Wishbone & Spades 6" plate - purple - fantastic



46.
March 19