

BURNS

AUCTION SERVICE

2016 TAMPA BAY CARNIVAL GLASS CONVENTION AUCTION

FRIDAY & SATURDAY, FEB. 12 & 13

Preview: Friday morning at 11:00 a.m.

AUCTION: 1:00 P.M. (Lots #1-#225)

Preview: Saturday morning at 8:00 a.m.

AUCTION: 9:30 A.M. (Lots #226 to end)

DOLPHIN BEACH RESORT

4900 Gulf Blvd, St. Pete Beach, FL 33706

800-237-8916 OR 727-360-7011

www.dolphinbeach.com

Tom Burns, Auctioneer Florida License #AU3768

William Richards III Florida License #AU1621



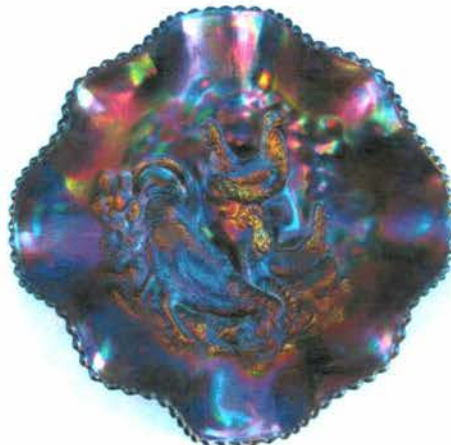
Lot # 95



Lot # 395



Lot # 425



Lot # 85



Lot # 475

Hello, 2016!...we start the auction season with the **Tampa Bay Carnival Glass Club Convention** here in good ole St. Pete Beach once again. We wish you a Happy New Year and we are offering you another good ole batch of Carnival Glass to be sold to the highest bidder. This year we are trying a 2-day format with the first session being sold Friday afternoon, finishing the rest of the glass on Saturday morning.

The **Dolphin Beach Resort of St. Pete Beach** will host the event once again. To get there, stay on I-275 through St. Petersburg to Exit 17 / The Bayway; continue West thru the Toll Booth and at the end, turn right (North) on Gulf Blvd. For hotel information call the resort directly at 1-(800) 237-8916 or 1-(727) 360-7011.

The Convention will run from Wednesday, February 10th thru Saturday, February 13th. For further Convention information, call Carl Chapman at 1-(813) 899-1993 or cell: 1-(813) 625-0927 or you may contact Janet Knechtel at 1-(863) 993-2387. The **Auction Flex Absentee Bidding System**, as well as **Auction Zip ID#29661**, will be in use. Auction Flex deadline is 11:59p.m. on Thursday, February 11th.

All absentee bidders note...if you are successful, I will mail the item and then call you with your total cost owed. All mailings will carry a minimum \$5 handling charge towards packing supplies, etc.. All dealers, please bring valid tax information.

For any other information, please call or write Tom Burns, 183 Sunnyside Drive, Clermont, FL 34711, Tel. 407-592-6552. Thanks.

- | | | | |
|---------|---|---------|---|
| ___ 1. | Fenton Fluffy Peacock Tumbler – Blue (satiny finish) | ___ 20. | 6 ¾" U.S. GLASS PALM BEACH BULBOUS PINCHED TOP VASE – MARI/MILK GLASS (VERY RARE & DESIRABLE ITEM; TOUGH) |
| ___ 2. | Imperial Little Barrel Perfume – Dk. Mari. (super example) | ___ 21. | U.S. Glass Palm Beach Handled Water Pitcher – Mari. (scarce; nice color) |
| ___ 3. | Imperial August Flower (#486C) Light Shade – Amber (rare base color; may have a tiny chip on edge) | ___ 22. | U.S. Glass Palm Beach Handled Creamer – Mari. (nice color) |
| ___ 4. | 5" Diamond Glass Co. Luster & Clear Cupped Bowl – Red (scarce) | ___ 23. | 6 ¼" U.S. Glass Palm Beach Tri-Cornered Sauce – Mari. (unusual item; sorta rare shape) |
| ___ 5. | 5 ¼" TALL X 9" DIAM. CAMBRIDGE INVERTED STRAWBERRY LG. ROUND CRIMPED COMPOTE – AMETHYST (RARE & DESIRABLE; HAS AN ODD CRIMP) | ___ 24. | U.S. Glass White Oak Tumbler – Mari. (rare item; perfect w/ really nice color) |
| ___ 6. | Cambridge Inverted Strawberry Candlestick – Mari. (nice color; scarce; has a couple chips on base) | ___ 25. | U.S. Glass Cosmos & Cane Covered Butter Dish – Honey Amber (super irid.; nice) |
| ___ 7. | 1910s-1920s Hanging Light Dome w/ Morning Glory Pattern (maker?) – Lt. Mari./Crystal Frosted (very different) | ___ 26. | U.S. Glass Cosmos & Cane Tumbler – Mari. (nice irid.) |
| ___ 8. | 8" Tall European Pinwheel Vase – Dk. Mari. (very scarce; nice dark color) | ___ 27. | U.S. Glass(?) Rising Sun Pedestaled Water Pitcher – Mari. (scarce variation; nice) |
| ___ 9. | N Dandelion Handled Mug – Blue (very scarce color; nice multi-colored irid.) | ___ 28. | U.S. Glass(?) Rising Sun Tumbler – Mari. (scarce; nice color) |
| ___ 10. | M'BURG SUNFLOWER PIN TRAY – GREEN (RARE, PERFECT & TOUGH TO FIND; GOLD HIGHLIGHTS) | ___ 29. | U.S. Glass(?) Rising Sun Juice Glass – Mari. (very scarce; nice) |
| ___ 11. | U.S. Glass Scroll Patterned Pin Tray – Lt. Mari. (scarce; nice color) | ___ 30. | FOSTORIA BROCADED ACORNS HANDLED ICE BUCKET – LAVENDER (RARE COLOR FOR A SCARCE ITEM) |
| ___ 12. | Interior Honeycomb Tumbler w/ Enameled Berry Décor. – Lt. Mari. (unusual; nice color) | ___ 31. | Fostoria Brocaded Acorns Handled Sugar Bucket – Ice Blue (scarce item) |
| ___ 13. | Westmoreland Orange Peel Stemmed Sherbet – Teal (very scarce color) | ___ 32. | FOSTORIA BROCADED PALMS HANDLED ICE BUCKET – ICE GREEN (VERY SCARCE; NICE IRID.) |
| ___ 14. | 10 ½" Tall Jenkins Cut Flowers Lg. Cylinder Vase – Mari. (scarce; nice color) | ___ 33. | Imperial (or Lancaster) Stretch 3 pc. Mayo Set w/ Floral Decoration – White (scarce set; nice décor; <u>ladle not irid.</u>) |
| ___ 15. | NOVELTY SCOTTIE DOG CANDY CONTAINER – MARI. (VERY RARE NOVELTY; REALLY NICE IRID.) | ___ 34. | Imperial Brocaded Daffodil Center Handled Nappy – Pink (nice irid.; scarce) |
| ___ 16. | (maker?) Buzz Saw and File Handled Water Pitcher – Mari. (nice dark color) | ___ 35. | Inwald Jacobean Ranger 2 pc. Tumble-Up – Dk. Mari. (super dark color) |
| ___ 17. | (maker?) Buzz Saw and File Lg. Iced Tea Tumbler – Mari. (nice color) | ___ 36. | Inwald Jacobean Ranger 2 pc. Covered Pin Dish - Dk. Mari. (very scarce; nice & dark) |
| ___ 18. | (maker?) Buzz Saw and File Standard Tumbler – Mari. (scarce item; nice color) | ___ 37. | Imperial Plain Handled Syrup Jug – Dk. Mari. (scarce item; tough to find) |
| ___ 19. | (maker?) Buzz Saw and File Juice Glass – Mari. (very scarce item; nice color) | ___ 38. | 9" European Pods & Posies Flared Plate – Green (scarce; great color & irid.) |

- ___39. Cambridge Inverted Feather Covered Cracker Jar – Green (nice color; has chip on lid)
- ___40. **CAMBRIDGE INVERTED FEATHER HANDLED CREAMER – MARI. (VERY SCARCE ITEM)**
- ___41. Cambridge Inverted Strawberry Tumbler – Mari. (scarce; nice color)
- ___42. M'burg Diamond Handled Water Pitcher – Green (nice irid.)
- ___43. M'burg Diamond Tumbler – Green (nice color)
- ___44. M'burg Diamond Tumbler – Mari. (really nice color)
- ___45. M'burg Feather & Heart Tumbler – Amethyst (scarce)
- ___46. M'burg Marilyn Tumbler – Amethyst (scarce; satiny)
- ___47. M'burg Marilyn Tumbler – Mari. (scarce; satiny)
- ___48. 6 ¾" M'burg Grape Wreath Variant 6 Ruffled Bowl – Green (nice; radium)
- ___49. M'burg Holly Sprig 2 Sided Handled Card Tray w/ Benesch 54th Anniv. – Mari. (nice color)
- ___50. **7 ¼" M'BURG LETTERED COURTHOUSE 6 RUFFLED BOWL – AMETHYST (RARE AS ALWAYS, AND HAS A GREAT RADIUM FINISH)**
- ___51. 7 7/8" M'burg Little Stars 6 Ruffled Bowl – Amethyst (excellent example)
- ___52. 9 ¼" M'burg Hanging Cherries Variant Ice Cream Shaped Bowl – Amethyst (rare variation; has serrated edge & plain ext.)
- ___53. 10" M'burg Hanging Cherries Lg. Ice Cream Bowl – Amethyst (really nice satiny finish)
- ___54. 9 ¾" M'burg Holly Sprig Lg. 6 Ruffled Bowl – Amethyst (nice color; radium)
- ___55. **8 ¼" M'BURG FLEUR DE LIS DEEP ROUND "NUT" BOWL – AMETHYST (UNUSUAL SHAPE; REALLY NICE IRID.)**
- ___56. **9 ¾" M'BURG WHIRLING LEAVES TRI-CORNERED CRIMPED EDGE BOWL – GREEN (RARE; RADIUM; HAS A GREAT YELLOW RADIUM FINISH)**
- ___57. **10 ½" M'BURG SEAWEED BOWL W/ 3 IN 1 EDGE – GREEN (RARE; WONDERFUL SATINY FINISH)**
- ___58. 9 ¾" M'burg Whirling Leaves 6 Ruffled Bowl – Green (nice color)
- ___59. 9" M'burg Trout & Fly 6 Ruffled Bowl – Green (desirable w/ a satiny finish)
- ___60. M'burg Poppy Stemmed Flared Compote – Mari. (rare; irid. is lacking inside)
- ___61. **M'BURG PEACOCKS 7 PC. FLARED BERRY SET – AMETHYST (RADIUM & VERY DESIRABLE)**
- ___62. **10 ½" M'BURG PEACOCK AT THE URN LG. BOWL W/ 3 IN 1 EDGE – AMETHYST (RADIUM; NICE; HAS BEE BUT NO BEADING)**
- ___63. 8 5/8" M'burg Peacock at the Urn "Mystery" 6 Ruffled Bowl – Amethyst (satiny finish)
- ___64. 10" M'burg Nesting Swan 6 Ruffled Bowl – Amethyst (satiny finish)
- ___65. **CONSOLIDATED HYACINTH GONE WITH THE WIND LAMP – MARI. (THE RAREST OF THE CONSOLIDATED LAMPS)**
- ___66. Dugan Pastel Swan Master Salt – Lt. P. Opal. (small flake on edge; has hotel medal)
- ___67. Dugan Fisherman's Mug – Lt. Amethyst (scarce; great detail)
- ___68. Dugan Fisherman's Mug – Dk. Mari. (super example)
- ___69. Dugan Fisherman's Mug – Purple (nice color)
- ___70. Dugan Heron Mug – Purple (very scarce; has a mold flaw)
- ___71. Dugan Stork and Rushes Mug – Amethyst (scarce)
- ___72. Dugan Heavy Iris Tumbler – Purple (satiny; small flake)
- ___73. Dugan Heavy Iris Tumbler – Mari.
- ___74. Dugan Beaded Shell Tumbler – Mari.
- ___75. **DUGAN JEWEL HEART 5 PC. WATER SET – DK. MARI. (VERY UNDERRATED SET; PITCHER IS A SUPER EXAMPLE)**
- ___76. **DUGAN VINTAGE BANDED PEDESTALED WATER PITCHER – MARI. (RARE ITEM; TOUGH TO FIND)**
- ___77. Dugan Maple Leaf Water Pitcher and Tumbler – Purple (selling 2 for 1)
- ___78. Dugan Stork and Rushes Water Pitcher and Tumbler – Lt. Mari. (selling 2 for 1)
- ___79. **DUGAN CHERRY WREATH WATER PITCHER AND TUMBLER – PURPLE (EXCELLENT EXAMPLE W/ BRIGHT IRID.; SELLING 2 FOR 1)**
- ___80. **DUGAN VINEYARD HANDLED WATER PITCHER – PURPLE (RARE COLOR; NICE)**
- ___81. Dugan Butterfly & Tulip 4 ftd. 4 Sided Bowl w/ Inverted Feather and Fan Ext. – Mari. (scarce item – sorta radium)
- ___82. 10 ¼" Dugan Cosmos Variant Flat Chop Plate – Mari. (flat & rare)
- ___83. 9" Dugan Border Plants domed Handgrip Plate – P. Opal. (great example; great opal.)
- ___84. **7 ¼" DUGAN GRAPEVINE LATTICE FLAT PLATE – PASTEL MARI. (SUPER BRIGHT IRID. – EXCELLENT EXAMPLE)**
- ___85. **10" DUGAN FARMYARD DIAMOND SHAPED 8 RUFFLED BOWL W/ JEWEL HEART EXT. – PURPLE (RARE & EXTREMELY DESIRABLE; GREAT COLOR & DETAIL)**
- ___86. 8 ½" WIDE X 10" DUGAN FOUR FLOWERS 8 RUFFLED 2 SIDED BANANA DISH – PURPLE (RARE ITEM; REALLY NICE COLOR & SHAPE)
- ___87. 6 ½" Dugan Four Flowers Flat Plate w/ Basketweave Ext. – P. Opal. (nice opal.)
- ___88. **4 ¼" TALL DUGAN TRI-CORNERED BEAUTY BUD VASE – PURPLE (RARE; DESIRABLE – HAS NICE AVERAGE IRID.)**
- ___89. 7 ¼" Tall Dugan Circle Scroll Swung Vase – Mari. (scarce; nice color)
- ___90. **8 7/8" DUGAN FANCIFUL FLAT PLATE – BLUE (VERY SCARCE W/ A NICE SATINY FINISH)**
- ___91. **8 7/8" DUGAN FANCIFUL LOW 10 RUFFLED PLATE – AMETHYST (SCARCE & DESIRABLE W/ NICE IRID.)**
- ___92. 8 ¾" Dugan Fanciful Flared Plate – P. Opal. (scarce; nice opal.)
- ___93. 9 1/8" Dugan Fanciful Flat Plate – White (super irid.)
- ___94. 8 ¾" Dugan Fanciful low 10 Ruffled Plate – P. Opal. (scarce; nice opal.)
- ___95. **9 ¼" DUGAN APPLE BLOSSOM TWIGS LOW 10 RUFFLED BOWL/ PLATE – ICE BLUE (EXTREMELY RARE; 2ND KNOWN EXAMPLE; ABSOLUTELY SUPER)**
- ___96. 8 5/8" Dugan Apple Blossom Twigs low 10 Ruffled Bowl/ Plate – White (really nice irid.)
- ___97. **10" TALL DUGAN BIG BASKETWEAVE SWUNG VASE – CELESTE BLUE (SORTA DARK; VERY DIFFERENT; QUITE SCARCE)**
- ___98. **DUGAN VINTAGE GRAPE COVERED POWDER JAR – PURPLE (EXCELLENT IRID.; SUPER EXAMPLE)**
- ___99. (2) Imperial Flute Toothpick Holders – (1) Purple (1) Green (selling 2 for 1)

- ___ 100. **IMPERIAL FLUTE HANDLED WATER PITCHER – TEAL (VERY RARE COLOR – TRUE TEAL)**
- ___ 101. **IMPERIAL FLUTE HANDLED WATER PITCHER – HONEY AMBER (REALLY UNUSUAL COLOR; HAVEN'T SEEN THIS BEFORE)**
- ___ 102. Imperial Heavy Grape Handled Punch Cup – Purple (super example)
- ___ 103. Imperial Colonial (Wide Panel) Handled Punch Cup signed w/ Iron Cross – Dk. Mari. (dark & nice)
- ___ 104. Imperial Fashion Handled Creamer – Smoke (scarce; nice irid.)
- ___ 105. **IMPERIAL FASHION HANDLED WATER PITCHER & (1) TUMBLER – SMOKE (RARE; TOUGH TO FIND PAIR)**
- ___ 106. (2) Imperial Fashion Handled Creamers – (1) Helios Green (1) Mari. (selling 2 for 1)
- ___ 107. Imperial Diamond Lace Handled Water Pitcher & (1) Tumbler – Purple (super pair; great irid.)
- ___ 108. (2) Imperial Grape Tumblers – (1) Odd Amethyst (1) Purple (one almost looks Amber; selling 2 for 1)
- ___ 109. (2) Imperial Grape Stemmed Goblets – (1) Smoke (1) Green (scarce; selling pair for one money)
- ___ 110. **IMPERIAL GRAPE WATER CARAFE – MARI. (VERY SCARCE; GREAT IRID.)**
- ___ 111. (2) Imperial Grape Water Carafes – (1) Purple, (1) Helios Green (Purple example has a flake on edge)
- ___ 112. Imperial Tiger Lily Handled Water Pitcher – Green
- ___ 113. Imperial Tiger Lily Tumbler – Teal (scarce base color)
- ___ 114. Imperial Soda Gold Tumbler – Smoke (nice irid.)
- ___ 115. **9 ¼" IMPERIAL SAND & SHELL FLARED PLATE – MARI. (VERY SCARCE IN THIS COLOR)**
- ___ 116. 9 ¼" Imperial Grape Flat Plate – Green (nice example)
- ___ 117. 9 ¼" Imperial Pansy low 8 Ruffled Plate – Smoke (scarce; super irid.)
- ___ 118. **IMPERIAL CHATELAINE TUMBLER – PURPLE (RARE; NICE EXAMPLE)**
- ___ 119. Imperial Lustre Rose Tumbler – Purple (really nice irid.)
- ___ 120. **IMPERIAL WINDMILL MID-SIZE WATER PITCHER – SMOKE (VERY SCARCE COLOR; NICE)**
- ___ 121. (2) Imperial Windmill Tumblers – Purple (super pair; selling two times the money)
- ___ 122. Imperial Windmill Mid-Size Water Pitcher – Dk. Mari. (great color)
- ___ 123. Imperial Windmill Handled Milk Pitcher – Dk. Mari. (another nice example)
- ___ 124. Imperial Windmill Handled Milk Pitcher – Helios Green
- ___ 125. **IMPERIAL WINDMILL HANDLED MILK PITCHER – LIME GREEN (RARE & ODD BASE COLOR; LOOKS VASELINEY)**
- ___ 126. Imperial Windmill Mid-Size Water Pitcher – Helios Green (scarce)
- ___ 127. **IMPERIAL FIELDFLOWER HANDLED WATER PITCHER – AMETHYST (LIGHT BASE COLOR; NICE IRID.)**
- ___ 128. Imperial Fieldflower Handled Water Pitcher – Mari. (nice color)
- ___ 129. Imperial Fieldflower Handled Water Pitcher – Sorta Teal (odd base color; different)
- ___ 130. **(4) IMPERIAL FASHION HANDLED PUNCH CUPS – RED/ AMBERINA (RARE ITEMS; SELLING SO MUCH EACH FOR THE SET)**
- ___ 131. **IMPERIAL HOBSTAR COVERED BUTTER DISH – PURPLE (RARE; GREAT IRID.)**
- ___ 132. Imperial Octagon Tumbler w/ Collar Base – Purple (very scarce; perfect)
- ___ 133. Imperial Hobstar Band Pedestaled Water Pitcher – Mari. (scarce variation)
- ___ 134. Imperial 474 Handled Milk Pitcher – Mari.
- ___ 135. **11 ¾" IMPERIAL STRETCH WIDE PANEL CHOP PLATE – RED (REALLY RED & A GREAT SIZE)**
- ___ 136. **PAIR IMPERIAL STRETCH INTERIOR PANELED BREAKFAST OPEN SUGAR & CREAMER – RED (RARE & DESIRABLE PAIR; DARK COLOR)**
- ___ 137. **6 ½" IMPERIAL JEWELS CUPPED ROSE BOWL – PURPLE (SIGNED W/ IRON CROSS – NICE PLATINUM IRID.)**
- ___ 138. **3" TALL IMPERIAL JEWELS TURNED-IN ROSE BOWL – DK. MARI. (SIGNED W/ IRON CROSS – A BEAUTY!!)**
- ___ 139. Imperial File Tumbler – Mari.
- ___ 140. **8 ½" IMPERIAL HEAVY GRAPE FLAT PLATE – LT. AMETHYST (ODD COLOR W/ GREAT IRID.)**
- ___ 141. 8 1/8" Imperial Heavy Grape Flat Plate – Purple (super irid.)
- ___ 142. 8" Imperial Heavy Grape Flat Plate – Pastel Mari. (super irid.)
- ___ 143. 8 3/8" Imperial Heavy Grape Flat Plate – Helios Green
- ___ 144. 8" Imperial Heavy Grape Flat Plate w/ No Scallops on Edge – Dk. Mari. (odd variation w/ great irid.)
- ___ 145. **9 ¼" N HEARTS & FLOWERS FLARED PLATE W/ RIBBED EXT. – ICE BLUE (RARE & VERY DESIRABLE; HAS FANTASTIC IRID.)**
- ___ 146. 9" N Hearts & Flowers 8 Ruffled Bowl w/ Ribbed Ext. – Ice Blue (scarce; nice irid.)
- ___ 147. 8 7/8" N Hearts & Flowers 8 Ruffled Bowl w/ Ribbed Ext. – Ice Green (very scarce; nice)
- ___ 148. 8 7/8" N Nippon 8 Ruffled Bowl w/ Ribbed Ext. – Ice Blue (scarce; nice irid.)
- ___ 149. 8 ¾" N Nippon Bowl w/ P.C.E. & Ribbed Ext. – Lt. Ice Blue (light in color)
- ___ 150. **9 ½" N POPPY SHOW FLARED PLATE – GREEN/ EMERALD GREEN (AN ABSOLUTE BEAUTY; PERFECT W/ EXCELLENT IRID. – A KILLER!)**
- ___ 151. **9 ¼" N POPPY SHOW FLARED PLATE – DK. MARI. (VERY SCARCE; NICE COLOR & IRID.)**
- ___ 152. 9 ½" N Poppy Show Flared Plate – Purple (scarce w/ a multi-colored irid.)
- ___ 153. 9 ¼" N Poppy Show Flared Plate – Lt. White (light in color)
- ___ 154. **9" N EMBROIDERED MUMS FLAT PLATE W/ RIBBED EXT. – ICE GREEN (EXCELLENT EXAMPLE; GREAT IRID.)**
- ___ 155. **9 ½" N ROSE SHOW FLARED PLATE – ICE GREEN (RARE AND VERY DESIRABLE; SUPER IRID.)**
- ___ 156. **9" N ROSE SHOW 8 RUFFLED BOWL – LIME ICE GREEN (ANOTHER GREAT COLORED ITEM; NICE)**
- ___ 157. **9" N ROSE SHOW FLARED PLATE – ICE BLUE (SUPER EXAMPLE W/ EXCELLENT IRID.)**
- ___ 158. 8 7/8" N Rose Show 8 Ruffled Bowl – White (nice example)
- ___ 159. **9" N ROSE SHOW FLARED PLATE – ELEC. BLUE (GREAT COLOR W/ BRIGHT IRID.)**
- ___ 160. **9 ¼" N ROSE SHOW FLARED PLATE – PURPLE (VERY SCARCE AND VERY DESIRABLE)**
- ___ 161. **9 ¼" N ROSE SHOW FLARED PLATE – DK. MARI. (SUPER COLOR; REALLY NICE ITEM)**
- ___ 162. **9" N ROSE SHOW 8 RUFFLED BOWL – DK. MARI. (ANOTHER EXCELLENT ITEM; NICE)**

- ___ 163. 9" N ROSE SHOW VARIANT FLAT PLATE W/ RIBBED EXT. – PASTEL MARI. (RARE AND VERY DESIRABLE; GREAT IRID.)
- ___ 164. 9" N PEACOCKS 8 RUFFLED BOWL W/ RIBBED EXT. – AQUA OPAL. (NICE ITEM; VERY ATTRACTIVE)
- ___ 165. 8 ¾" N LATTICE & POINSETTIA FTD. FLARED PLATE W/ RIBBED EXT. – CUSTARD/ BLUE STAIN (VERY RARE ITEM W/ EXCELLENT DÉCOR- REALLY NICE)
- ___ 166. 6 ¼" N "DREIBUS PARFAIT SWEETS" HANDGRIP PLATE W/ BASKETWEAVE EXT. – AMETHYST (VERY DESIRABLE; GREAT DETAIL & IRID.)
- ___ 167. 6 ½" N "FERN BRAND CHOCOLATES" 2 SIDED DOUBLE HANDGRIP PLATE W/ BASKETWEAVE EXT. – AMETHYST (ANOTHER REALLY NICE ADVERTISING ITEM)
- ___ 168. N DANDELION TANKARD WATER PITCHER & (1) TUMBLER – PURPLE (SCARCE; NICE)
- ___ 169. N Dandelion Tankard Water Pitcher – Dk. Mari. (very scarce; has check at top of handle)
- ___ 170. 9" N GREEK KEY PLATE W/ BASKETWEAVE EXT. – DK. MARI. (EXCELLENT SATINY EXAMPLE; NICE)
- ___ 171. N Greek Key Tumbler – Dk. Mari. (nice color)
- ___ 172. N Greek Key Tumbler – Green
- ___ 173. N ORIENTAL POPPY TANKARD WATER PITCHER – PURPLE (VERY DESIRABLE; NICE ITEM)
- ___ 174. N Oriental Poppy Tankard Water Pitcher & (1) Tumbler – Mari. (selling 2 for 1 – nice set)
- ___ 175. 9" N GOOD LUCK FLARED PLATE W/ RIBBED EXT. – ELEC. BLUE (RARE & VERY DESIRABLE; GREAT COLOR & IRID.)
- ___ 176. 9" N Good Luck Flared Plate w/ Basketweave Ext. – Green (nice satiny finish)
- ___ 177. 9" N Good Luck Flared Plate w/ Basketweave Ext. – Purple (really nice example)
- ___ 178. 8 ½" N Good Luck 8 Ruffled Bowl w/ Basketweave Ext. – Purple (nice color & irid.)
- ___ 179. 9 1/8" N Good Luck Flared Plate w/ Basketweave Ext. – Mari. (nice satiny example)
- ___ 180. N MEMPHIS 8 PC. RUFFLED PUNCH SET – PURPLE (RARE & DESIRABLE; TOP HAS NICE BLUE HIGHLIGHTS)
- ___ 181. N MEMPHIS 9 PC. RUFFLED PUNCH SET – DK. MARI. (EXCELLENT EXAMPLE; WELL MATCHED SET)
- ___ 182. 8 5/8" N Wishbone ftd. Tri-Cornered Bowl – Amethyst (satiny; tool marks on edge)
- ___ 183. N Wishbone Tumbler – Mari. (scarce)
- ___ 184. N Peacock at the Fountain Handled Punch Cup – White (nice irid.; scarce)
- ___ 185. N PEACOCK AT THE FOUNTAIN HANDLED WATER PITCHER – PURPLE (SCARCE; NICE IRID.)
- ___ 186. N Peacock at the Fountain Tumbler – Elec. Purple (super irid.)
- ___ 187. N Apple Blossom Enameled Tumbler – Blue (excellent example)
- ___ 188. N INTERIOR SWIRL HANDLED WATER PITCHER IN THE RASPBERRY MOLD – MARI. (RARE MOLD; TOUGH TO FIND)
- ___ 189. N Springtime Handled Creamer – Mari.
- ___ 190. 8 ¾" N G&C STIPPLED FLARED PLATE W/ RIBBED EXT. – ELEC. GREEN (BRIGHT IRID.; SUPER EXAMPLE; GREAT IRID.)
- ___ 191. 8 ¾" N G&C VARIANT STIPPLED FLARED PLATE W/ RIBBED EXT. – ELEC. GREEN (SUPER EXAMPLE; EXCELLENT IRID.)
- ___ 192. 9" N G&C Variant Plate w/ "Old Rose Distillery-Chicago" Advertising & Ribbed Ext. – Green (satiny finish; tough item)
- ___ 193. 9" N G&C Flared Plate w/ Basketweave Ext. – Purple (super irid.)
- ___ 194. 9" N G&C Variant Flared Plate & Basketweave Ext. – Mari. (nice example)
- ___ 195. 9" N G&C VARIANT STIPPLED 8 RUFFLED BOWL W/ RIBBED EXT. – SAPPHIRE (RARE; VERY DESIRABLE; GREAT IRID.- PASTEL FINISH)
- ___ 196. N G&C TANKARD WATER PITCHER – DK. MARI. (RARE; NICE COLOR & IRID.)
- ___ 197. N G&C Tankard Tumbler – Dk. Mari. (really nice color)
- ___ 198. N G&C STIPPLED TANKARD TUMBLER – PURPLE (NEVER SEEN ANOTHER; ABOUT AS TOUGH AS THEY GET)
- ___ 199. N G&C Covered Sweetmeat Compote – Purple (nice irid.)
- ___ 200. 9" N G&C BOWL W/ P.C.E. & BASKETWEAVE EXT. – WHITE (EXTREMELY RARE ITEM; HAS GOLD HIGHLIGHTS)
- ___ 201. N G&C Lg. Open Ruffled Compote – Mari. (very scarce; very desirable)
- ___ 202. N G&C Lg. Open Ruffled Compote – Purple (very scarce; very desirable)
- ___ 203. 7 ½" N G&C Handgrip Plate w/ Basketweave Ext. – Green (super irid.)
- ___ 204. N G&C 2 Sided Double Handgrip Plate or Card Tray w/ Basketweave Ext. – Mari. (nice irid.)
- ___ 205. N G&C FTD. TURNED-IN CENTERPIECE BOWL – DK. MARI. (NICE DARK COLOR)
- ___ 206. N Eight Sided Handled Bushel Basket – Green (very scarce color)
- ___ 207. N Round Handled Bushel Basket – Horehound (scarce base color; nice)
- ___ 208. N Round Handled Bushel Basket – Purple
- ___ 209. N Round Handled Bushel basket - Blue
- ___ 210. 9" N THREE FRUITS MEDALLION 3 FTD. 8 RUFFLED BOWL W/ MEANDER EXT. – ICE GREEN (RARE ITEM; HAS EXCELLENT IRID.; REALLY NICE)
- ___ 211. N CORN VASE W/ PLAIN BASE – LIME ICE GREEN (NICE DARKER COLOR; VERY SCARCE)
- ___ 212. N CORN VASE W/ STALK BASE – ICE GREEN (VERY SCARCE)
- ___ 213. N Corn Vase w/ Plain Base – White (scarce; nice)
- ___ 214. N Corn Vase w/ Plain Base – Mari. (very scarce; bruise on base?)
- ___ 215. 9" N STRAWBERRY PLATE W/ PLAIN EXT. – AMETHYST (SUPER IRID.)
- ___ 216. 9" N Strawberry Plate w/ Plain Ext. – Green (super irid.)
- ___ 217. 7 ½" N Wild Strawberry Handgrip Plate w/ Basketweave Ext. – Mari.
- ___ 218. N Leaf & Beads ftd. Flared Nut Bowl w/ Floral Int. – Purple (nice finish)
- ___ 219. N'wood Stretch Concave Diamond Spittoon Shaped Vase – Vaseline (super color; very desirable)
- ___ 220. N'WOOD STRETCH "BARBELLA" 7 PC. ROUND BERRY SET – VASELINE (VERY RARE SET; GREAT COLOR)
- ___ 221. Pair 10" Tall N'wood Stretch Paneled Candlesticks – Vaseline (great color & irid.)

222. Fenton Stretch ftd. Fan Vase w/ Interior Panels – Vaseline (nice color)
223. Fenton Stretch 2 pc. Tumble-Up – Vaseline (very scarce; nice color)
224. **FENTON STRETCH 2 PC. HANDLED GUEST SET – VASELINE (RARE AND VERY DESIRABLE; NICE)**
225. **FENTON STRETCH 8 PC. COVERED LEMONADE SET W/ COBALT HANDLES – VASELINE (RARE SET; GLASSES MAY HAVE SOME PINHEADS)**

START OF SECOND SESSION

226. 7 ½" Fenton Stretch Center Handled Oval Tidbit Tray – Tangerine (rare item; odd piece)
227. Fenton Stretch Diamond Optic Lg. 2 Sided Handled Basket – Aquamarine (very scarce; nice irid.)
228. Fenton Stretch Small-Size Double Dolphin ftd. Fan Vase – Aquamarine (scarce item)
229. Fenton Plain Tumbler w/ Enameled Floral Décor. – Ice Green (nice décor.)
230. **FENTON PRISM BAND TANKARD 5 PC. WATER SET W/ DIANTHUS DÉCOR. – ICE GREEN (SCARCE; GREAT COLOR & DECORATION)**
231. 7 ¼" Fenton Stretch Cupped in Bowl – Red (nice color; some water stain)
232. Fenton Stretch Stemmed Sherbet – Red (scarce; great color)
233. Fenton Peacock at the Urn Stemmed Ruffled Compote – Aqua (scarce color)
234. Fenton Peacock at the Urn Stemmed Ruffled Compote – Mari./ Vaseline (small chip on base)
235. **6" FENTON "OGDEN FURNITURE AND CARPET CO. - OGDEN UTAH" ADVERTISING PLATE – AMETHYST (VERY RARE; DESIRABLE W/ GREAT DETAIL)**
236. **6" FENTON "SEASON'S GREETINGS-EAT PARADISE SODAS" ADVERTISING PLATE – AMETHYST (EXCELLENT EXAMPLE; NICE SATINY FINISH)**
237. **FENTON KITTENS HANDLED CUP – BLUE (RARE; GREAT COLOR – GREAT DETAIL)**
238. Fenton Kittens Saucer or Plate – Mari.
239. Fenton Kittens Ruffled Toothpick Holder – Mari. (nice color)
240. **FENTON KITTENS RUFFLED TOOTHPICK HOLDER – BLUE (SCARCE ITEM; NICE COLOR)**
241. Fenton Kittens Cereal Bowl – Mari. (nice color)
242. Fenton Kittens 2 Sided Banana Dish – Mari. (nice color)
243. Fenton Kittens 6 Ruffled Bowl – Mari.
244. Fenton Butterfly & Berry ftd. Covered Butter Dish – Mari. (nice color)
245. **FENTON BUTTERFLY & BERRY HANDLED WATER PITCHER – AMETHYST (EXTREMELY RARE COLOR FOR THIS ITEM)**
246. Fenton Butterfly & Berry Tumbler – Amethyst (scarce color)
247. Fenton Butterfly & Fern Water Pitcher & (1) Tumbler – Amethyst (scarce pair)
248. Fenton Butterfly & Fern Water Pitcher & (1) Tumbler – Green (another scarce pair)
249. **FENTON LATTICE & GRAPE TANKARD WATER PITCHER – BLUE (NICE EXAMPLE W/ MULTI-COLORED IRID.)**

250. **FENTON LARGE SIZE 2 ROW OPEN EDGE BASKETWEAVE 2 SIDED BANANA DISH – CELESTE BLUE (VERY SCARCE; NICE SIZE AND SHAPE)**
251. 5 ¼" Fenton 2 Row Open Edge Basketweave I.C. Shaped Hat – White (scarce; nice)
252. Fenton 2 Row Open Edge Basketweave 6 Ruffled Hat – Aqua
253. Fenton 2 Row Open Edge Basketweave 6 Ruffled Hat – Red (nice color)
254. Fenton 2 Row Open Edge Basketweave J.I.P. Hat – Red (nice color)
255. **FENTON 2 ROW OPEN EDGE BASKETWEAVE 2 SIDED HAT – AMBERINA (VERY SCARCE ITEM; TOUGH TO FIND)**
256. 6 ½" Fenton Stippled Rays I.C. Shaped Sauce – Red (scarce; nice color)
257. Fenton Orange Tree 9 pc. Ruffled Punch Set – Blue (scarce set; nice)
258. Fenton Persian Medallion Hair Receiver – White (really nice irid.)
259. **9 ¼" FENTON PERSIAN MEDALLION FLAT PLATE – BLUE (VERY SCARCE; PRETTY NICE EXAMPLE)**
260. **9 1/8" FENTON LOTUS & GRAPE FLAT PLATE – GREEN (RARE AND DESIRABLE; NICE IRID.; TURNS A BIT)**
261. 9 ¼" Fenton Captive Rose Flared Plate – Green (nice; has a chip on base)
262. 9 ¼" Fenton Captive Rose Flared Plate – Amethyst (nice color; scarce)
263. 9" Fenton Hearts & Vine Flared Plate – Blue (scarce; gold highlights)
264. 9" Fenton Ribbon Tie low 3 in 1 Edge Plate – Blue (scarce)
265. **9 ¼" FENTON "COMPLIMENTS SPECTOR'S DEPARTMENT STORE" ADVERTISING PLATE – MARI. (VERY DESIRABLE; NICE COLOR & DETAIL)**
266. **9 3/8" FENTON DRAGON & LOTUS FLARED PLATE – MARI. (RARE ITEM; NICE AVERAGE COLOR)**
267. (2) Fenton Strawberry Scroll Tumblers – Mari. (selling 2 times the money)
268. Fenton Bouquet Tumbler – Blue (nice example)
269. Fenton Orange Tree Orchard Tumbler – Blue
270. **8" FENTON HORSEHEAD MEDALLION 3 FTD. J.I.P. BOWL – MARI./ VASELINE (VERY SCARCE & DESIRABLE COLOR)**
271. 7" Fenton Horsehead Medallion 6 Ruffled Bowl – Blue (very scarce; nice)
272. 7" Fenton Horsehead Medallion 6 Ruffled Bowl – Mari.
273. Fenton Horsehead Medallion ftd. Rose Bowl – Mari.
274. 7 ¼" Fenton Lions 6 Ruffled Bowl – Mari.
275. **FENTON IRIS/ DIAGONAL BAND TANKARD WATER PITCHER – BLUE (VERY DESIRABLE; NICE DECORATION)**
276. **FENTON PRISM BAND/ ENAMELED FORGET-ME-NOT TANKARD WATER PITCHER – BLUE (ANOTHER REALLY NICE EXAMPLE)**
277. Fenton Orange Tree Orchard Tumbler – Dk. Mari. (super example)
278. Fenton Ten Mums Tumbler – Mari.
279. 5 ½" Square Fenton Little Flowers 4 Sided Bowl – Mari. (scarce shape)
280. Fenton Wine & Roses 6 pc. Cider Set – Mari. (scarce set)
281. Fenton Leaf Tiers ftd. Covered Butter Dish – Dk. Mari. (very scarce; nice color)

- ___282. Fenton ftd. Orange Tree Covered Butter Dish – Dk. Mari. (super dark color & irid.)
- ___283. Fenton Waterlily & Cattail Covered Butter Dish – Dk. Mari. (very scarce items; nice color)
- ___284. Fenton Mikado Lg. Ruffled Stemmed Compote – Mari. (nice color)
- ___285. 7 ¼" Fenton Peacock & Dahlia 6 Ruffled Bowl – Mari./ Aqua
- ___286. Dugan Folding Fan Stemmed 6 Ruffled Crimped Compote – Dk. P. Opal. (super example)
- ___287. Dugan Honeycomb Rose Bowl – P. Opal. (nice item)
- ___288. 8 7/8" Dugan Stippled Petals domed Crimped Plate – Dk. P. Opal (scarce shape)
- ___289. 7 ½" Dugan Flowers & Frames domed Deep 10 Ruffled Bowl – P. Opal. (nice opal.)
- ___290. **DUGAN FISHNET SINGLE LILY EPERGNE – P. OPAL. (NICE COLOR W/ NICE OPAL.)**
- ___291. 8 7/8" Dugan Soutache domed 6 Ruffled Crimped Bowl – P. Opal. (scarce pattern)
- ___292. 9 ½" Dugan Cherries 8 Ruffled Bowl w/ Jeweled Heart Ext. – P. Opal (nice opal.)
- ___293. 9" Dugan Double Stem Rose domed Bowl w/ 3 in 1 Edge – P. Opal. (nice opal.)
- ___294. 10" Dugan Garden Path Variant 6 Ruffled Bowl w/ Soda Gold Ext. – Lt. P. Opal. (light color & opal.)
- ___295. **10 ¼" DUGAN GARDEN PATH VARIANT 6 RUFFLED BOWL W/ SODA GOLD EXT. – PURPLE (SUPER COLOR & HAS GREAT IRID.; REALLY NICE)**
- ___296. **9 ¾" DUGAN FOUR FLOWERS LG. 6 RUFFLED BOWL – PURPLE (RARE SHAPE; NICE COLOR)**
- ___297. 7 ½" Dugan Flowers & Frames domed Deep 10 Ruffled Bowl – Purple (scarce; nice irid.)
- ___298. 7 ¾" Dugan Six Petals 6 Ruffled Bowl – Purple (nice irid.)
- ___299. **7 3/8" DUGAN HONEYCOMB AND BEADS CRIMPED EDGE PLATE – PURPLE (TOUGH ITEM; SUPER COLOR & IRID.)**
- ___300. **8 ¼" TALL DUGAN CIRCLE SCROLL SWUNG VASE – PURPLE (RARE & VERY DESIRABLE; SUPER BLUE HIGHLIGHTS)**
- ___301. **8 ¾" TALL DUGAN BIG BASKETWEAVE SWUNG VASE – AMETHYST (VERY DESIRABLE; GREAT COLOR & IRID.)**
- ___302. **9" TALL DUGAN LINED LATTICE SWUNG VASE – HOREHOUND (RARE BASE COLOR; NICE)**
- ___303. **7 ¾" DUGAN FIVE HEARTS DOMED FLARED BOWL/ PLATE – AMETHYST (VERY SCARCE ITEM; NICE COLOR)**
- ___304. 8 ¾" Dugan Paneled Cherries 3 ftd. Flared Crimped Edge Plate – Purple (scarce; nice irid.)
- ___305. **9" DUGAN DOUBLE STEM ROSE DOMED 10 RUFFLED BOWL – PURPLE (SUPER EXAMPLE; NICE IRID.)**
- ___306. 7" Dugan Bellflower 6 Ruffled Bowl – Purple (nice irid.)
- ___307. 7 1/8" Dugan Question Mark ftd. Plate w/ Georgia Peach & Puzzle Ext. – Mari. (nice satiny finish)
- ___308. 9" Dugan Apple Blossom Twigs low 10 Ruffled Bowl/ Plate – P. Opal. (nice opal.)
- ___309. 8 1/8" Dugan Apple Blossom Twigs Ice Cream Shaped Bowl – White (nice irid.)
- ___310. **DUGAN GRAPEVINE LATTICE J.I.P. WHIMSEY HAT FROM TUMBLER – WHITE (RARE SHAPE; GREAT IRID.; HAS ENAMELED "SOUVENIR OF WAUNAKEE, WI")**
- ___311. Dugan Circle Scroll J.I.P. Whimsey Hat from Tumbler – Mari. (nice color)
- ___312. Dugan Floral & Grape J.I.P. Whimsey Hat from Tumbler – Mari.
- ___313. 7 ¼" Dugan Flowers & Beads Ext. Flat Plate – P. Opal. (super example)
- ___314. Dugan Ski Star domed Crimped 4 Sided Banana Dish – Dk. P. Opal. (nice color & opal.)
- ___315. **8 7/8" DUGAN FANCIFUL LOW 10 RUFFLED PLATE – AMETHYST (GREAT COLOR & IRID.; SCARCE & NICE)**
- ___316. 9 ½" Dugan Fanciful 10 Ruffled Bowl – P. Opal.
- ___317. 8 ½" Dugan Fanciful Ice Cream Shaped Bowl – Dk. P. Opal. (really nice opal.)
- ___318. 9 1/8" Dugan Roundup 10 Ruffled low Bowl – Lt. P. Opal.
- ___319. 9" Dugan Single Flower Exterior/ Enameled Lily Interior low 10 Ruffled Bowl – P. Opal (nice color; and enameled décor.)
- ___320. Dugan Heavy Iris 5 pc. Tankard Water Set – Mari. (scarce; average irid.)
- ___321. Dugan Golden Harvest Wine Decanter, Stopper & (1) Wine – Mari. (nice color and irid.)
- ___322. Dugan Grape Arbor Lg. 4 ftd. Round Bowl w/ Inverted Fan and Feather Ext. – Mari. (scarce item)
- ___323. Dugan (or N'wood) G&C 4 ftd. Banana Boat – Dk. Mari. (scarce; nice dark color)
- ___324. Dugan (or N'wood) G&C Pin Tray – Purple (outstanding irid.)
- ___325. Dugan (or N'wood) G&C Oval Stippled Pin Tray – Mari. (very rare & nice)
- ___326. Dugan Big Basketweave 8 Ruffled Fruit Bowl Base only – Blue (boy!!... if you need this item...)
- ___327. Dugan Peacock at the Fountain Tumbler – Blue (super example)
- ___328. Dugan Rambler Rose Tumbler – Blue
- ___329. Dugan Daisy & Lattice Tankard Water Pitcher – Lt. Mari.
- ___330. **9 1/8" DUGAN FLOWERS & FRAMES DOMED 10 RUFFLED BOWL – PURPLE (SUPER COLOR & IRID.; GREAT IRID.)**
- ___331. 8 5/8" Westmoreland Carolina Dogwood 6 Ruffled Bowl – Mari./Milk Glass (scarce; nice)
- ___332. 8 ¾" Westmoreland Carolina Dogwood 6 Ruffled Bowl – Lt. P. Opal.
- ___333. Westmoreland 270 ftd. Round Compote – Blue Opaque/ Mari. (scarce; light overlay)
- ___334. Westmoreland 270 ftd. Round Compote – P. Opal. (really nice example)
- ___335. **8 ½" WESTMORELAND SCALES ICE CREAM SHAPED BOWL – BLUE OPAL. (SCARCE; NICE OPAL ON EDGE)**
- ___336. 8 5/8" Westmoreland Scales 6 Ruffled Bowl – P. Opal. (nice opal.)
- ___337. 5 5/8" Westmoreland Hobstar Fruit 6 Ruffled Sauce – P. Opal. (scarce)
- ___338. 8" Tall Westmoreland Corinth J.I.P. Vase – Teal (scarce color)
- ___339. 10 ¼" Tall Jenkins Cut Flowers Lg. Cylinder Vase – Dk. Mari. (nice dark color)
- ___340. **6 ½" TALL X 10" TOP DIAMETER AUSTRALIAN BUTTERFLY & WARATAH LG. 12 RUFFLED STEMMED COMPOTE – PURPLE (VERY RARE; GREAT COLOR & IRID.; NICE)**
- ___341. 4 ½" Cambridge Inverted Thistle Individual Berry Bowl – Amethyst
- ___342. Cambridge Inverted Feather Covered Cracker Jar – Green (nice color; perfect)

- ___ 343. 10" M'burg Fleur de Lis 6 Ruffled Crimped Edge Bowl – Amethyst (radium & very desirable)
- ___ 344. 8 ¾" M'burg Blackberry Wreath Bowl w/ 3 in 1 Edge – Amethyst (satiny finish)
- ___ 345. **7 ¾" M'BURG BIG FISH ICE CREAM SHAPED BOWL – MARI. (RARE & DESIRABLE; PERFECT W/ NICE SATINY FINISH)**
- ___ 346. **8 ¼" M'BURG TROUT & FLY ICE CREAM SHAPED BOWL – GREEN (VERY DESIRABLE; NICE SATINY FINISH)**
- ___ 347. 10" M'burg Peacock at the Urn Lg. Ice Cream Bowl – Amethyst (satiny finish; has bee but no beading)
- ___ 348. 10" M'burg Peacock at the Urn Lg. 6 Ruffled Bowl – Mari. (scarce; nice satiny finish; has bee but no beading)
- ___ 349. 5 3/8" M'burg Peacock Individual Flared Berry Bowl – Amethyst (really nice radium finish)
- ___ 350. **M'BURG HOBNAIL SPITTOON – AMETHYST (RARE; DESIRABLE W/ EXCELLENT IRID.)**
- ___ 351. 10" M'burg Nesting Swan 6 Ruffled Bowl – Amethyst (satiny & nice)
- ___ 352. 9 7/8" M'burg Primrose 6 Ruffled Bowl – Amethyst (satiny finish)
- ___ 353. 9 ½" M'burg Rays & Ribbons 6 Ruffled Crimped Edge Bowl – Amethyst (radium & very desirable)
- ___ 354. **10" M'BURG HANGING CHERRIES VARIANT BOWL W/ 3 IN 1 EDGE – AMETHYST (RARE VARIATION; TOUGH TO FIND)**
- ___ 355. **9 ½" M'BURG ZIG ZAG 6 RUFFLED CRIMPED EDGE BOWL – DK. MARI. (RADIUM & REALLY NICE)**
- ___ 356. 10 ¼" M'burg Blackberry Wreath Lg. Bowl w/ 3 in 1 Edge – Mari. (nice large satiny item)
- ___ 357. 6 ¾" M'burg Grape Wreath Variant Bowl w/ 3 in 1 Edge – Amethyst (radium & nice)
- ___ 358. 6" M'burg Peacock Tail Variant Stemmed 6 Ruffled Compote – Mari. (radium & nice)
- ___ 359. M'burg Holly Sprig 2 Sided 2 Handled Card Tray w/ "Benesch 54th Anniversary" Advertising – Mari. (satiny)
- ___ **360. FOSTORIA BROCADED ACORNS 6 PC. TANKARD WATER SET – LAVENDER (EXTREMELY RARE SET; GREAT COLOR; TOUGH TO FIND)**
- ___ 361. Pair 3 ¼" Tall Fostoria Brocaded Acorns Squatty Candlesticks – Lavender (scarce pair)
- ___ 362. 8 ½" Fostoria Brocaded Acorns Flat Plate – Ice Blue (quite a rare item)
- ___ 363. **11 5/8" FOSTORIA BROCADED ACORNS LG. CENTER HANDLED TRAY W/ FLEUR DE LIS HANDLE – ICE BLUE (SCARCE; NICE COLOR)**
- ___ 364. 8 7/8" Fostoria Brocaded Palms Flat Handled Plate – Ice Green
- ___ 365. **12 ¼" FOSTORIA BROCADED PALMS LG. FLAT HANDLED PLATE – PINK (SCARCE; NICE IRID.)**
- ___ 366. 6 ¾" Fostoria Brocaded Acorns 2 Sided Handled Nappy – Lavender
- ___ 367. 7" Fostoria Brocaded Acorns Deep Round Handled Nappy – Ice Blue
- ___ 368. 6 ½" Imperial Brocaded Daffodil Round 8 Sided Bowl – White
- ___ 369. 8 ¾" Imperial Brocaded Daffodil 2 Sided Handled Nappy – Ice Green
- ___ 370. 3 ¼" Tall x 5 5/8" Diameter Imperial Brocaded Daffodil 8 Sided Compote - Pink
- ___ 371. **11 ¾" TALL EUROPEAN MARY GREGORY TALL CRUET & STOPPER – LT. MARI./ BLUE STAIN (RARE; UNUSUAL; GIRL FLYING A KITE)**
- ___ 372. Elegant Era (maker?) Crackle Pattern 3 pc. Console Set – Clear/ Irid. (never seen this variation before)
- ___ 373. Imperial Starlyte Light Shade – Mari.
- ___ 374. Imperial Daisy Chain Light Shade – Dk. Mari. (scarce)
- ___ 375. **8" IMPERIAL GRAPE ICE CREAM SHAPED BOWL – ELEC. PURPLE (ABSOLUTELY SUPER ITEM; RARE SHAPE AND A BEAUTY!!)**
- ___ 376. **9" IMPERIAL EMBOSSED SCROLL FLAT PLATE – AMETHYST (FLAT W/ GREAT COLOR & IRID.)**
- ___ 377. Imperial Embossed Scroll Stemmed 8 Ruffled Compote – Amethyst (super irid.)
- ___ 378. 8 7/8" Imperial Pansy 8 Ruffled Bowl – Amethyst (nice goldish finish)
- ___ 379. Imperial Pansy Oblong Relish Tray – Purple (super irid.)
- ___ 380. Imperial Diamond Lace Water Pitcher & (1) Tumbler – Purple (super items; great irid.)
- ___ 381. Imperial Tiger Lily Tumbler – Purple (scarce; nice irid.)
- ___ 382. Imperial Grape Water Carafe – Purple (attractive item)
- ___ 383. Imperial Grape Wine Decanter & Stopper – Pastel Mari. (super color & irid.)
- ___ 384. Imperial Grape Cup & Saucer – Mari.
- ___ 385. **IMPERIAL POPPY SHOW VASE – MARI. (VERY SCARCE; NICE COLOR)**
- ___ 386. 15 ¼" Tall x 3 7/8" Base Imperial Ripple Lg. Swung Vase – Dk. Mari. (very desirable; nice irid.)
- ___ 387. 9" Tall x 3 3/8" Base Imperial Ripple Mid-Size Swung Vase – Purple (nice irid.; attractive)
- ___ 388. 11 ¼" Tall Imperial Beaded Bullseye Swung Vase – Purple (scarce; nice irid.)
- ___ 389. 8" Tall Imperial Swirl J.I.P. Vase – Smoke (super irid.)
- ___ 390. **4 ¼" TALL X 4" TOP FLARE IMPERIAL MINIATURE MORNING GLORY SQUATTY VASE – PURPLE (GREAT IRID.)**
- ___ 391. Imperial Fashion Handled Punch Cup – Pastel Mari. (odd color)
- ___ 392. 8 5/8" Imperial Open Rose Round Flared Bowl – Aqua/ Mari. (scarce base color)
- ___ 393. Imperial Hobstar Covered Butter, Covered Sugar, and Creamer – Mari.
- ___ 394. Imperial Diamond & Sunburst Wine Decanter, Stopper, and (3) Wines – Dk. Mari.
- ___ **395. 10 ¼" IMPERIAL CHRYSANTHEMUM CHOP PLATE-SIGNED NUART – GREEN (EXTREMELY RARE; SIGNED W/ EXCELLENT IRID.; MAY HAVE A PINHEAD)**
- ___ 395A. **IMPERIAL BROKEN ARCHES 8 PC. PUNCH SET – PURPLE (BEAUTIFUL IRID.; RARE & DESIRABLE)**
- ___ 396. 8" Imperial Heavy Grape Flat Plate – Amber (super irid.)
- ___ 397. 10 ½ - 11" Imperial Heavy Grape Chop Plate – Green
- ___ 398. 10 ½ - 11" Imperial Heavy Grape Chop Plate – Mari.
- ___ 399. Imperial 474 Handled Water Pitcher – Dk. Mari. (nice color)
- ___ 400. **CAMBRIDGE LARGE-SIZE BUZZ SAW CRUET & STOPPER – GREEN (SUPER EXAMPLE; GREAT COLOR)**
- ___ 401. **CAMBRIDGE SMALL-SIZE BUZZ SAW CRUET & STOPPER – GREEN (VERY DESIRABLE; REALLY NICE COLOR & IRID.)**
- ___ 402. (4) N'wood Stretch Concave Diamond Tumblers – Celeste Blue (selling all (4) for (1) money)

- ___403. **N BEADED CABLE FTD. RUFFLED ROSE BOWL – ICE BLUE (RARE; DESIRABLE; HAVEN'T SOLD ONE IN A WHILE)**
- ___404. N Beaded Cable ftd. Ruffled Rose Bowl – Aqua Opal. (very scarce; nice)
- ___405. **N FINE CUT & ROSES FTD. RUFFLED ROSE BOWL W/ FANCY INT. – AQUA OPAL. (RARE & VERY DESIRABLE; ANOTHER WE HAVEN'T SOLD ONE IN A WHILE)**
- ___406. N Fine Cut & Roses ftd. Ruffled Rose Bowl w/ Fancy Int. – Ice Blue (scarce; nice color)
- ___407. N Drapery Rose Bowl – Aqua Opal. (scarce; nice opal.)
- ___408. **N DANDELION HANDLED MUG – AQUA OPAL. (VERY SCARCE; NICE COLOR & OPAL.)**
- ___409. N Leaf & Beads ftd. Rose Bowl – Aqua w/ Lt. Opal Tips (scarce)
- ___410. **9" N G&C VARIANT STIPPLED PLATE W/ RIBBED EXT. – SAPPHIRE (RARE AND VERY DESIRABLE; NICE COLOR)**
- ___411. 8 3/4" N G&C Variant 8 Ruffled Bowl w/ Plain Ext. – Purple (super color & irid.)
- ___412. 8 7/8" N G&C ftd. Flared Plate w/ Meander Ext. – Green (nice item)
- ___413. **10 1/2" N G&C LG. ICE CREAM BOWL W/ BASKETWEAVE EXT. – PURPLE (VERY SCARCE; NICE)**
- ___414. N G&C 10 pc. Water Set – Purple (nice color)
- ___415. **N G&C STANDARD FLARED 9 PC. PUNCH SET – DK. MARI. (RARE; DESIRABLE; RARE SHAPE & NICE)**
- ___416. N G&C Covered Butter Dish – Dk. Mari. (nice color)
- ___417. N G&C Spooner – Mari.
- ___418. N G&C Covered Butter Dish – Purple (nice color)
- ___419. N G&C Handled Punch Cup Whimsey Pin Nappy – Mari.
- ___420. N G&C ftd. Hatpin Holder – Purple (scarce; nice color)
- ___421. N G&C Cologne Bottle & Stopper – Purple (scarce; nice color)
- ___422. N G&C Covered Powder Jar – Purple (scarce; nice color)
- ___423. N G&C Perfume Bottle w/ no stopper – Purple (scarce part)
- ___424. N G&C Tumbler - Green
- ___425. **N G&C STANDARD 8 PC. RUFFLED PUNCH SET – WHITE (EXTREMELY RARE COLOR; GREAT IRID.; TOUGH TO FIND)**
- ___426. N Springtime Handled Creamer – Mari.
- ___427. 5 3/4" N Peacock at the Urn ind. Ice Cream Bowl – Purple (nice color)
- ___428. N Singing Birds Master Berry Bowl & (2) ind. Berry Bowls – Mari.
- ___429. N Singing Birds Covered Butter Dish, Spooner, and Creamer – Mari. (selling as a set)
- ___430. **N SINGING BIRDS 7 PC. WATER SET – EMERALD GREEN (ABSOLUTELY SUPER SET; ONE TUMBLER MAY NEED TO BE UPGRADED – ONE OF THE BEST)**
- ___431. 8 1/2" N Good Luck 8 Ruffled Bowl w/ Plain Ext. – Purple (rare variation w/ excellent irid.)
- ___432. 8 3/4" N Good Luck Bowl w/ P.C.E. & Basketweave Ext. – Green (scarce; satiny)
- ___433. 8 1/2" N Good Luck Bowl w/ P.C.E. & Ribbed Ext. – Dk. Mari. (super color)
- ___434. 8 1/2" N Nippon Bowl w/ P.C.E. & Plain Ext. – Ice Blue (scarce; rare w/ plain ext.)
- ___435. **9" N PEACOCKS PLATE W/ RIBBED EXT. – ICE BLUE (RARE ITEM; AN EXCELLENT EXAMPLE W/ SUPER COLOR & IRID.)**
- ___436. 9 1/4" N Peacocks Plate w/ Ribbed Ext. – Ice Green (scarce w/ excellent irid.)
- ___437. 9" N Peacocks Plate w/ Plain Ext. – Ice Green (super irid.; nice)
- ___438. 8 3/4" N Peacocks Bowl w/ P.C.E. & Ribbed Ext. – Blue (attractive multi-colored irid.)
- ___439. 9" N Peacocks 8 Ruffled Bowl w/ Ribbed Ext. – Mari. (nice color; nice)
- ___440. **8 5/8" N PEACOCKS 8 RUFFLED BOWL W/ RIBBED EXT. – ICE GREEN (RARE & DESIRABLE; GREAT IRID.; NICE)**
- ___441. **8 5/8" N PEACOCKS 8 RUFFLED BOWL W/ RIBBED EXT. – AQUA OPAL. (ATTRACTIVE ITEM W/ NICE IRID.; TOUGH)**
- ___442. 8 3/4" N Peacocks Bowl w/ P.C.E. & Ribbed Ext. – Purple (scarce; nice irid.)
- ___443. **9" N PEACOCKS 8 RUFFLED BOWL W/ RIBBED EXT. – SODA GOLD AMETHYST (VERY SCARCE BASE COLOR & IRID.; NICE)**
- ___444. **9 1/4" N PEACOCKS PLATE W/ RIBBED EXT. – SODA GOLD AMETHYST (ANOTHER RARER ITEM W/ NICE COLOR & IRID.)**
- ___445. **9" N PEACOCKS PLATE W/ RIBBED EXT. – GREEN (VERY SCARCE; NICE COLOR & SATINY FINISH)**
- ___446. 9" N Peacocks Plate w/ Ribbed Ext. – Ice Green (very scarce; nice irid.)
- ___447. 9" N Peacocks Plate w/ Plain Ext. – White (scarce; nice irid.)
- ___448. N Acorn Burrs ind. Round Berry Bowl – Purple
- ___449. N Acorn Burrs Master Berry Bowl & (2) ind. Berry Bowls – Mari.
- ___450. N Acorn Burrs Handled Water Pitcher & (3) Tumblers – Green (pitcher has a good size chip on base)
- ___451. 9 3/4" N Wishbone Lg. Bowl w/ P.C.E. & Basketweave Ext. – Purple (very desirable; bright irid. w/ blue highlights)
- ___452. **8 1/2" N WISHBONE 8 RUFFLED BOWL W/ RUFFLES & RINGS EXT. – BLUE (ODD SHADE; VERY TOUGH COLOR)**
- ___453. 8 1/2" N Wishbone 8 Ruffled Bowl w/ Ruffles & Rings Ext. – Amethyst (really nice example)
- ___454. 8" N Wishbone Deep 8 Ruffled ftd. Bowl w/ Ruffles & Rings Ext. – Purple (another nice item w/ blue highlights)
- ___455. **N 8 SIDED HANDLED BUSHEL BASKET – ICE BLUE (RARE COLOR W/ EXCELLENT IRID.)**
- ___456. N 8 Sided Handled Bushel Basket – Amethyst
- ___457. N Round Handled Bushel Basket – Ice Green (nice irid.)
- ___458. N Round Handled Bushel Basket – White (scarce shape)
- ___459. N Round Handled Bushel Basket – Mari.
- ___460. **18 1/2" TALL X 8" TOP DIAM. X 5 1/4" BASE N TREE TRUNK SWUNG FUNERAL VASE – PURPLE (RARE & DESIRABLE; MULTI-COLORED W/ GOLD HIGHLIGHTS)**
- ___461. **12 3/4" TALL X 4 5/8" BASE N TREE TRUNK MID-SIZE SWUNG VASE – ICE GREEN (RARE & VERY DESIRABLE; GREAT COLOR)**
- ___462. **12 3/4" TALL X 4 3/4" BASE N TREE TRUNK MID-SIZE SWUNG VASE – WHITE (RARE & DESIRABLE; FROSTY W/ NICE IRID.)**
- ___463. **14 1/8" TALL X 4 3/4" BASE N TREE TRUNK MID-SIZE SWUNG VASE – BLUE (SWUNG TALLER; GREAT COLOR & IRID.)**
- ___464. 12" Tall x 4 3/4" Base N Tree Trunk Mid-Size Swung Vase – Purple (scarce; nice irid.)

- ___ 465. **12 ¼" TALL X 4 ¾" BASE N TREE TRUNK MID-SIZE SWUNG VASE – GREEN (VERY SCARCE; HAS A NICE FLARE)**
- ___ 466. 6" Tall x 5 ½" Diam. N Tree Trunk Squatty Swung Vase – Green (nice size; really nice satiny irid.)
- ___ 467. 12 ¼" Tall x 4 ¾" Base N Tree Trunk Mid-Size Swung Vase – Dk. Mari. (super color)
- ___ 468. 10 3/8" Tall N Tree Trunk Standard Swung Vase – Dk. Mari. (super color)
- ___ 469. 6 7/8" Tall N Tree Trunk Squatty Swung Vase – Mari. (nice size & color)
- ___ 470. **N RASPBERRY HANDLED WATER PITCHER – ICE BLUE (EXTREMELY RARE COLOR W/ EXCELLENT IRID.; NICE)**
- ___ 471. **N RASPBERRY HANDLED MILK PITCHER – LIME ICE GREEN (VERY RARE ITEM; GREAT COLOR & IRID.; HAS MANUFACTURER FLAW ON LIP)**
- ___ 472. N Raspberry Handled Milk Pitcher – Pastel Mari. (scarce color; nice)
- ___ 473. N Raspberry Handled Milk Pitcher – Mari. (nice color)
- ___ 474. N Blossomtime Stemmed 6 Ruffled Compote – Purple (scarce; nice)
- ___ 475. **N MEMPHIS 6 PC. RUFFLED PUNCH SET – WHITE (EXTREMELY RARE SET W/ NICE IRID.)**
- ___ 476. N Memphis 2 pc. Ruffled Fruit Bowl & Base – Green (very scarce; nice color; chip on top of pedestal)
- ___ 477. **N ENAMELED APPLE BLOSSOM 6 PC. TABLE SET – BLUE (EXTREMELY RARE SET; PERFECT W/ GREAT COLOR AND DÉCOR.)**
- ___ 478. N Enamelled Floral Tumbler - Blue
- ___ 479. N Grape Arbor Tankard Pitcher & (3) Tumblers – Mari. (nice color)
- ___ 480. **N PEACOCK AT THE FOUNTAIN RUFFLED PUNCH BOWL & BASE – BLUE (VERY DESIRABLE; BASE IS ELECTRIC; SET IS NICE)**
- ___ 481. (2) N Peacock at the Fountain Punch Cups – Blue (nice examples; selling x 2)
- ___ 482. N Peacock at the Fountain Punch Cup – Blue (silvery)
- ___ 483. **N PEACOCK AT THE FOUNTAIN 8 PC. FLARED PUNCH SET – WHITE (ONE FLANGE HAS DAMAGE BUT EXTREMELY RARE SET)**
- ___ 484. N Peacock at the Fountain Tumbler – Amethyst (super blue highlights)
- ___ 485. **N PEACOCK AT THE FOUNTAIN HANDLED WATER PITCHER – BLUE (SCARCE W/ NICE COLOR)**
- ___ 485. N Peacock at the Fountain 3 ftd. Ruffled Fruit Bowl – Amethyst (scarce; nice color & irid.)
- ___ 487. N Peacock at the Fountain 3 ftd. Ruffled Fruit Bowl – Mari. (scarce; nice color)
- ___ 488. **8 ½" TALL N DRAPERY SWUNG VASE – ICE GREEN (SCARCE; NICE)**
- ___ 489. N Drapery Tri-Cornered Candy Dish – Mari. (super color)
- ___ 490. **N ROSE SHOW 8 RUFFLED BOWL – ICE GREEN (RARE & DESIRABLE W/ GREAT COLOR & IRID.)**
- ___ 491. **N ROSE SHOW 8 RUFFLED BOWL – MARI. (SCARCE; NICE COLOR)**
- ___ 492. **N ROSE SHOW VARIANT 8 RUFFLED BOWL W/ RIBBED EXT. – MARI. (RARE AND VERY DESIRABLE; SUPER IRID.)**
- ___ 493. N Poppy Show 8 Ruffled Bowl – White (scarce; nice)
- ___ 494. N Oriental Poppy 7 pc. Tankard Water Set – Dk. Mari. (scarce; well matched set)
- ___ 495. **10 ½" TALL N DIAMOND POINT SWUNG VASE – AQUA OPAL. (VERY RARE & ALWAYS DESIRABLE; VERY ATTRACTIVE)**
- ___ 496. 8" Tall N Diamond Point Swung Vase - Amethyst
- ___ 497. 8" Tall N Diamond Point Swung Vase – Dk. Mari. (nice color)
- ___ 498. N Dandelion Handled Mug – Dk. Mari. (very scarce; nice dark color)
- ___ 499. **N DIAMOND POINT HANDLED BUSHEL BASKET – LT. MARI. (LIGHT IN COLOR BUT VERY DESIRABLE)**
- ___ 500. **9" N LATTICE & POINSETTIA FTD. 8 RUFFLED BOWL – AMETHYST (EXTREMELY DESIRABLE; SUPER IRID.)**
- ___ 501. 9" N Embroidered Mums 8 Ruffled Bowl w/ Ribbed Ext. – Blue (scarce & desirable; nice color)
- ___ 502. **8 ½" TALL N DRAPERY VARIANT SWUNG VASE – PURPLE (SCARCE; SUPER COLOR & IRID.)**
- ___ 503. **N CORN VASE W/ STALK BASE – GREEN (VERY DESIRABLE; NICE COLOR)**
- ___ 504. N Corn Vase w/ Stalk Base – Ice Green (scarce; nice irid.)
- ___ 505. **N HEARTS & FLOWERS 8 RUFFLED BOWL W/ RIBBED EXT. – LT. AQUA (RARE BASE COLOR; NICE PASTEL FINISH)**
- ___ 506. N Hearts & Flowers 8 Ruffled Bowl w/ Ribbed Ext. – White (scarce; nice)
- ___ 507. N Hearts & Flowers 8 Ruffled Bowl w/ Ribbed Ext. – Mari. (scarce; nice)
- ___ 508. N Hearts & Flowers Bowl w/ P.C.E. & Ribbed Ext. – Mari. (very scarce shape)
- ___ 509. N Hearts & Flowers Stemmed 6 Ruffled Compote w/ Ribbed Ext. – White (nice irid.)
- ___ 510. **N DANDELION 7 PC. TANKARD WATER SET – PURPLE (RARE; NICE SET W/ NICE IRID.)**
- ___ 511. **N DAISY & DRAPE FTD. FLARED VASE – AQUA OPAL. (ALWAYS RARE AND HAS NICE OPAL. & IRID.)**
- ___ 512. **N DAISY & DRAPE FTD. FLARED VASE – WHITE (RARE W/ THE FLARE; SUPER FROSTY)**
- ___ 513. 9" N Three Fruits Medallion Spatula ftd. 8 Ruffled Bowl w/ Meander Ext. – Amethyst (nice irid.)
- ___ 514. 7 ½" N Fruits & Flowers 2 Sided Card Tray w/ Basketweave Ext. – Green (scarce; nice)
- ___ 515. **8 ¾" N THREE FRUITS STIPPLED 8 RUFFLED BOWL W/ RIBBED EXT. – WHITE (RARE; TOUGH TO FIND)**
- ___ 516. **9 1/8" N THREE FRUITS STIPPLED PLATE W/ RIBBED EXT. – BLUE/ ELEC. BLUE (ATTRACTIVE ITEM W/ BLUE HIGHLIGHTS)**
- ___ 517. 9" N Three Fruits 8 Ruffled Bowl w/ Plain Ext. – Purple (super irid.)
- ___ 518. 9" N Three Fruits Flared Plate w/ Plain Ext. – Mari. (nice irid.)
- ___ 519. 7 ½" N Wild Strawberry Handgrip Plate w/ Basketweave Ext. – Amethyst (nice irid.)
- ___ 520. 8 ¾" N Strawberry Flared Plate w/ Plain Ext. – Mari. (nice irid.)
- ___ 521. 9" N Strawberry Plate w/ Basketweave Ext. – Amethyst (nice satiny irid.)
- ___ 522. 8 ¾" N Strawberry 8 Ruffled Bowl w/ Basketweave Ext. – Mari.
- ___ 523. N Grape & Gothic Arches 6 pc. Table Set – Dk. Mari. (nice dark color)
- ___ 524. Fenton Kittens 6 Ruffled Bowl – Mari. (nice color)

525. 6 1/2" FENTON PINE CONE FLAT PLATE W/ PANELED EXT. – AMETHYST (ABSOLUTELY SUPER IRID. – A BEAUTY!)
526. 6" FENTON LOTUS & POINSETTIA FTD. 6 RUFFLED SAUCE – REVERSE AMBERINA (NICE COLOR; VERY DESIRABLE)
527. 6" Fenton Lotus & Poinsettia ftd. 6 Ruffled Sauce – Lt. Olive/ Yellow Green (odd tint)
528. 5 3/4" Fenton Lotus & Poinsettia ftd. 6 Ruffled Sauce – Aqua (scarce; nice)
529. 10 1/2" Tall Fenton Fine Rib Standard Swung Vase – Red (nice example; chip on base)
530. 9" FENTON VINTAGE GRAPE FLARED PLATE – MARI. (EXTREMELY RARE ITEM; VERY TOUGH TO FIND)
531. Fenton Butterfly & Fern Handled Water Pitcher – Mari. (satiny; nice)
532. 9 1/2" FENTON ORANGE TREE FLAT PLATE – BLUE (SUPER IRID.; AN EXCELLENT EXAMPLE)
533. 9 1/4" FENTON ORANGE TREE FLAT PLATE – DK. MARI. (ANOTHER SUPER EXAMPLE; NICE)
534. Fenton Enameled Forget-Me-Not Tankard Water Pitcher – Mari. (nice decoration)
535. 9 1/4" FENTON LEAF CHAIN FLAT PLATE – DK. MARI. (SUPER COLOR & VERY DESIRABLE)
536. 9 1/4" FENTON LEAF CHAIN FLAT PLATE – BLUE (ANOTHER ITEM THAT'S TOUGH TO FIND)
537. 9 1/2" Fenton Leaf Chain Flat Plate – White (super irid.)
538. 9 1/4" FENTON PEACOCK AT THE URN FLAT PLATE – WHITE (ABSOLUTELY SUPER EXAMPLE)
539. 8 1/2" Fenton Peacock at the Urn 8 Ruffled Bowl – Dk. Mari. (nice color)
540. FENTON WREATH OF ROSES FLARED PUNCH BOWL & BASE W/ VINTAGE INT. – BLUE (EXCELLENT EXAMPLE; NICE)
541. 9 5/8" Fenton Little Fishes ftd. 8 Ruffled Bowl – Mari. (nice color; scarce)
542. 7 7/8" Fenton Horsehead Medallion ball ftd. 8 Ruffled Bowl – Green (very scarce; nice color)
543. 7" Fenton Horsehead Medallion ball ftd. Ice Cream Shaped Bowl – Dk. Mari. (nice color)
544. 7" Fenton Horsehead Medallion Ice Cream Shaped Bowl – Mari.
545. FENTON FLUFFY PEACOCK 7 PC. WATER SET – DK. MARI. (RARE, UNDERPRICED SET; NICE COLOR)
546. Fenton Zig Zag Enameled Columbine Pitcher & (3) Tumblers – Green (very scarce; nice color)
547. Fenton Enameled Chrysanthemum Bulbous Water Pitcher & (3) Tumblers – Mari. (nice set)
548. Fenton Orange Tree Handled Loving Cup – Mari. (scarce; nice color)
549. Fenton Orange Tree Covered Powder Jar - Blue
550. FENTON 2 ROW LARGE-SIZE I.C. SHAPED OPEN EDGE BOWL – ICE GREEN (SCARCE; NICE COLOR)
551. Fenton 2 Row Open Edge Basketweave 4 Sided Hat – Ice Green (scarce shape)
552. Fenton 2 Row Open Edge Basketweave I.C. Shaped Hat – Ice Blue (nice color & size)
553. FENTON 2 ROW OPEN EDGE BASKETWEAVE 2 SIDED HAT – ICE BLUE (SCARCE SHAPE)
554. Fenton 2 Row Open Edge Basketweave 2 Sided Hat – Mari./ Vaseline
555. Fenton 2 Row Open Edge Basketweave 2 Sided Hat w/ "John Brand" Advertising – Mari. (nice color)
556. Fenton 2 Row Open Edge Basketweave 2 Sided Hat – Odd Blue
557. Fenton 2 Row Open Edge Basketweave 6 Ruffled Hat – Dk. Green (really odd color)
558. FENTON 2 ROW OPEN EDGE BASKETWEAVE J.I.P. HAT – RED (NICE EXAMPLE)
559. Fenton Blackberry 2 Row Open Edge Basketweave 6 Ruffled Hat – Green
560. FENTON BLACKBERRY 2 ROW OPEN EDGE BASKETWEAVE 2 SIDED HAT – RED (NICE COLOR)
561. Fenton Blackberry 2 Row Open Edge Basketweave 2 Sided Hat – Dk. Mari. (really nice color)
562. Fenton Magnolia & Drape Bulbous Water Pitcher – Mari.
563. Fenton Apple Tree Bulbous Water Pitcher – Dk. Mari. (nice color & irid.)
564. Fenton G&C Small-Size Ruffled Fruit Bowl w/ Persian Medallion Int. – Blue (scarce; nice color)
565. FENTON BANDED BLACKBERRY 6 RUFFLED HAT – WHITE (EXTREMELY RARE FENTON ITEM; SUPER)
566. 8 3/4" FENTON THISTLE 8 RUFFLED BOWL – MARI./ VASELINE (ANOTHER SCARCE FENTON ITEM; NICE)
567. 8 3/4" FENTON RAGGED ROBIN BOWL W/ 3 IN 1 EDGE – BLUE (SCARCE; REALLY NICE EXAMPLE)
568. Fenton Lattice & Grape 6 pc. Tankard Water Set – Mari. (nice color)
569. Fenton Vintage Grape Small-Size Single Lily Epergne – Amethyst (scarce; satiny)
570. Fenton Dragon & Lotus Ice Cream Shaped Spatula ftd. Bowl – Lime Green Opal. (great color; has open bubble on one foot)
571. 8" Fenton Dragon & Lotus Ice Cream Shaped Bowl – Blue (super example)
572. 9 3/8" Fenton Captive Rose Flared Plate – Blue (scarce; satiny finish)
573. Fenton Flowers ftd. Rose Bowl – Green (scarce color)
574. 7 1/2" FENTON ACORNS LOW 8 RUFFLED BOWL – RED (ACTUALLY QUITE A NICE EXAMPLE)
575. 7 5/8" Fenton Acorns low 8 Ruffled Bowl – Aqua/ Mari. (scarce)
576. 9 3/4" Fenton Holly Flat Plate – Mari. (satiny finish)
577. FENTON HOLLY STEMMED 6 RUFFLED COMPOTE – RED (ODD DARK TOP; SORTA SILVERY)
578. Fenton Holly Stemmed 6 Ruffled Compote – Mari./ Vaseline (scarce; true yellow)
579. 6" Fenton Pepper Plant Flared Crimped Edge Hat – Mari. (scarce shape)
580. FENTON BLACKBERRY SPRAY 6 RUFFLED HAT – RED (DESIRABLE; HAS NICE BASE COLOR)
581. Fenton Blackberry Spray 6 Ruffled Hat – Odd Root Beer (odd color)
582. Fenton Blackberry Spray Crimped J.I.P. Hat – Mari./ Vaseline (nice item)
583. Fenton Holly Crimped J.I.P. Hat – Amber (quite a rare color)
584. Fenton Holly Crimped J.I.P. Hat – Aqua/ Mari. (has a bruise on base)
585. 1976 HOACGA 8 pc Whiskey Set – Red (tough set)

DONALD DORAIS
 150 HIGHLAND AVENUE
 CUMBERLAND, RI 02864

BURNS AUCTION SERVICE



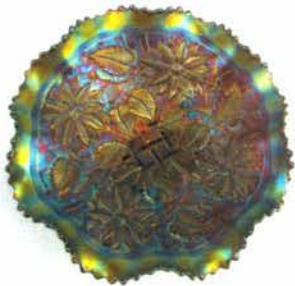
VISIT www.necga.com for pictures and brochures.
 CLICK CARNIVAL GLASS LINKS and look for Burns Auction.
 AUCTION FLEX AVAILABLE FOR THIS AUCTION. CHECK US OUT ON AUCTION ZIP #29661.

LEE MARKLEY
 BOX 306
 MENTONE, IN 46539



Lot # 10

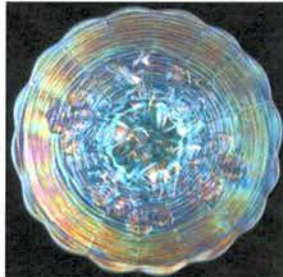
CARNIVAL GLASS AUCTION FEBRUARY 12TH & 13TH



Lot # 500



Lot # 145



Lot # 157



Lot # 165



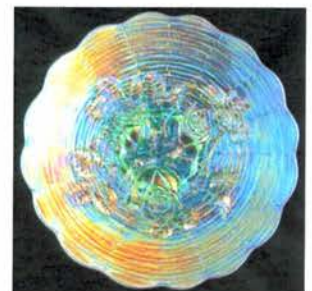
Lot # 154



Lot # 166



Lot # 167



Lot # 155



Lot # -



Lot # 470



Lot # 430



Lot # 295