



Crowne Plaza  
Airport Hotel  
St. Louis, Missouri



The  
Lawrence Renn  
Jr. Collection

Fri., Nov. 20  
Sat., Nov. 21



# Carnival Glass and Kerosene Lamp 2015 Auction



56



10



35



367

20



Jim and Jan Seeck

**Seeck Auctions**

641-424-1116





JIM & JAN SEECK

641-424-1116

## Carnival Glass & Kerosene Lamp Auction

Friday, November 20, 2015 — 6:00 P.M. — Kerosene Lamps

★ Absentee bidding closes, Friday, November 20 at 3 p.m. CST

Saturday, November 21, 2015 — 9:30 A.M. — Carnival Glass

★ Absentee bidding closes, Friday, November 20 at 9 p.m. CST

**Crowne Plaza Hotel — St. Louis Airport**

11228 Lone Eagle Drive Bridgeton, Missouri 63044

**NO BUYER'S PREMIUM—OPEN TO THE PUBLIC**

ABSENTEE BIDDING is available on-line through Auction Flex using our online catalog at [www.seeckauction.com](http://www.seeckauction.com)

Please email us and we will put you on our email mailing list for auction notices.

e-mail: [jimjan@seeckauction.com](mailto:jimjan@seeckauction.com)

### *The Lawrence Renn Jr. Collection*

Seeck Auctions is pleased to be selling the Lawrence Renn Jr. collection of kerosene lamps and Carnival Glass. The kerosene lamps will sell Friday evening. A listing is available on our website and will be available at the auction. The Carnival Glass will sell on Satur-

day. Lawrence was known for his water set collection but he has much more than that! His collection has a nice variety of pieces including many plates, bowls and other great pieces. Check the listing out and hope to see many of you in St. Louis!

#### Lodging

If you plan on attending and would like to stay at the hotel, we have a block of rooms available at a rate of \$99. **This rate will be cut off on October 29.** To make reservations, call 314-291-6700, group code is "CGL"

**Terms:** Cash or Check, VISA, MasterCard & Discover accepted w/proper ID. 4% Clerking Fee on all purchases made using credit cards. Announcements made day of sale take precedence over any printed information.

#### We have 3 options for absentee bidding for our live auctions:

1) **If you DO NOT have internet access, you can:** Call us by phone to enter your bids at (641)424-1116 **OR** by sending the numbers of the item(s) desired and the amount bid on each to: Seeck Auctions, PO Box 377, Mason City, Iowa 50402. We would prefer you call us with your bids rather than send them in a letter.) We will enter your bids into our online bidding system.

★ Have all written bids in by **Wed., Nov. 18.**

2) **Enter your bids from our website into our online catalog through the Auction Flex system.**

◆ **First-time bidders: Set up your account** by creating a user name and password and filling out basic information. You will also need to **register for the auction** which will ask you to enter a valid credit card number. This card will be validated by a one time only charge of \$1 charge to your card. **You will use this user name and password for all our auctions.**

◆ You are not required to pay by credit card if you are successful with your online bid. We will let you know what you owe us through an email and you can decide how you would like to pay us.

◆ An exciting advantage to online bidding is that you can be notified by email if you are outbid on an item, which lets you increase your bid in time, or bid on something else. **There is a cutoff date and time, for each auction, for entering your bids online.** ★ **Online absentee bidding for the lamp auction ends at 3 p.m. Fri., Nov. 20 and at 9 p.m. CST. that same night for the Carnival Glass.**

◆ Remember that just because you are the high bidder in the online catalog, this does not mean you have won the item. Your bid still needs to **beat** the floor bidders and live phone bidders. If your high bid lands with a floor bidder during the live auction, the floor bidder takes precedence. You might want to bid higher on a highly desired item for a better chance at winning its absentee bid.

◆ If you do not receive an item that sold for less than your bid, assume we canceled your bid because the item had a severe manufacture problem, damage, or was not listed correctly.

3) **Live phone bidding is available on pieces with an estimated sale price of \$500 or more.** ★ Contact us by the **Thursday before the auction, which is Nov. 19.** We will need to know the lot# and the phone number that you can be reached at on the day of the auction. We also need your home phone number if different than the above number.

Please call with questions: 641-424-1116.

**If you win an online bid** you will be notified by phone or e-mail between one to three days after the auction.

**There is a \$7 handling charge for each successful bid, with shipping and insurance charges additional.**

**ONLINE BID INCREMENTS:** \$1 - \$100/\$5    \$100 - \$200/\$10    \$200 - \$700/\$25    \$700 - \$1,500/\$50  
\$1,500 - \$3,000/\$100    \$3,000 - \$5,000/\$250    \$5,000+ Auctioneer's Discretion



**FRIDAY, NOVEMBER 20 – 6:00 PM – KEROSENE LAMPS**

Lots 1 to 245 plus a few extra misc. parts & pieces at end.

**Saturday, November 21 – 9:30 AM – Carnival Glass**

- \_\_\_ 1. M'burg Grape Wreath Variant 8" 3 in 1 edge bowl - green - radium, nice
- \_\_\_ 2. Dragon & Lotus spt ftd ruffled bowl – amethyst
- \_\_\_ 3. Dragon & Lotus spt ftd ruffled bowl - blue
- \_\_\_ 4. Imperial Grape 7 pc. wine set - purple
- \_\_\_ 5. Imperial Grape 7 pc. wine set - marigold
- \_\_\_ 6. Strawberry 9" plate w/BW back - purple
- \_\_\_ 7. Strawberry 9" plate w/BW back - green
- \_\_\_ 8. Strawberry 9" plate w/BW back - marigold - nice
- \_\_\_ 9. Honeycomb rose bowl - peach opal
- \_\_\_ **10. Oriental Poppy tankard water pitcher - ice blue - very rare pitcher & nice, will give you a tumbler with damage on the base**
- \_\_\_ 11. Oriental Poppy 7 pc. tankard water set – green - damage around top of handle where it is applied
- \_\_\_ 12. Oriental Poppy 7 pc. tankard water set – purple - crack in top of handle where applied
- \_\_\_ **13. Oriental Poppy 7 pc. tankard water set - marigold - pretty**
- \_\_\_ 14. Persian Medallion 10" ruffled bowl - green - silvery
- \_\_\_ 15. Persian Medallion 10" ruffled bowl - blue - silvery
- \_\_\_ **16. N's Peacock at Urn master IC bowl - ice green - very pretty example, scarce**
- \_\_\_ **17. N's Peacock at Urn master IC bowl - ice blue - very pretty**
- \_\_\_ 18. N's Peacock at Urn master IC bowl - white - also very pretty
- \_\_\_ 19. N's Stippled Peacock at Urn master IC bowl - custard w/nutmeg stain - not Carnival Glass
- \_\_\_ **20. Strawberry Scroll water pitcher – blue - rare & nice, we'll give you a damaged tumbler**
- \_\_\_ 21. Stag & Holly lg size deep ruffled bowl – marigold - dark, pretty
- \_\_\_ **22. Peacock at the Fountain water pitcher - green - pretty example for these, hard color to find**
- \_\_\_ 22a. Peacock at the Fountain tumbler – green - scarce
- \_\_\_ **23. Peacock at the Fountain 7 pc. water set - white with gold decoration - rare set, 2 tumblers have chips**
- \_\_\_ **24. Peacock at the Fountain 7 pc. water set – blue - pretty**
- \_\_\_ **25. Peacock at the Fountain 7 pc. water set - marigold - pretty**
- \_\_\_ 26. Dugan Peacock at the Fountain water pitcher - amethyst
- \_\_\_ 26a. N's Peacock at the Fountain tumblers (6) - purple
- \_\_\_ 27. Grape & Cable cologne bottle - purple - minor roughness on bottom of stopper
- \_\_\_ **28. Stippled Peacocks PCE bowl w/ribbed back - blue - scarce**
- \_\_\_ 29. Peacocks PCE bowl w/ribbed back - ice green - pretty, chip on point
- \_\_\_ **30. Peacocks PCE bowl w/plain back - white - scarce**
- \_\_\_ **31. Peacocks PCE bowl w/BW back - green - very scarce w/BW back**
- \_\_\_ 32. Peacocks PCE bowl w/ribbed back - lavender
- \_\_\_ 33. Peacocks PCE bowl w/ribbed back - purple
- \_\_\_ 34. Peacocks PCE bowl w/ribbed back - marigold - pretty!
- \_\_\_ **35. M'burg Perfection water pitcher - amethyst - extremely rare pitcher & highly desirable**
- \_\_\_ **35a. M'burg Perfection tumbler – amethyst - nice example**
- \_\_\_ 36. Peacock & Grape 3 in 1 edge bowl - lime green opal
- \_\_\_ 37. Peacock & Grape 3 in 1 edge bowl - green
- \_\_\_ **38. Rose Show 9" plate - green - scarce, nice**
- \_\_\_ **39. Rose Show 9" plate - ice blue - scarce, nice**
- \_\_\_ **40. Rose Show 9" plate – blue - scarce color**
- \_\_\_ **41. Rose Show 9" plate – marigold - nice**
- \_\_\_ 42. Rose Show 9" plate - white - a little deep
- \_\_\_ **43. Zippered Loop 8 1/2" kerosene lamp - smoke - 5 1/2" base, super nice**
- \_\_\_ **44. Zippered Loop 8 1/2" kerosene lamp - marigold - 4 1/2" base, nice**
- \_\_\_ **45. Zippered Loop small size finger lamp - marigold - super nice, rare**
- \_\_\_ 46. M'burg Zig Zag 3 in 1 edge bowl - green - has gold painted edge
- \_\_\_ **47. Greek Key 7 pc. water set - purple - very scarce set & highly desirable, chip on base of one tumbler**
- \_\_\_ 48. Greek Key water pitcher & 1 tumbler - tumbler - marigold - small chip in pattern near bottom of pitcher, nice
- \_\_\_ 49. Stag & Holly lg size IC shaped bowl – green - silvery, scarce color
- \_\_\_ 50. Stag & Holly lg size IC shaped bowl – aqua - silvery, scarce color
- \_\_\_ 51. Stag & Holly lg size IC shaped bowl - amethyst - silvery, scarce color
- \_\_\_ 52. Stag & Holly lg size IC shaped bowl – marigold - pretty
- \_\_\_ 53. Stippled Grape & Cable humidor - blue - minor roughness on inner rim of lid, rare color
- \_\_\_ **54. Fern Brand Chocolates double hand grip advertising plate - amethyst - scarce**
- \_\_\_ **55. Hearts & Flowers 9" plate w/ribbed back - ice blue - scarce & highly desirable plate**
- \_\_\_ **56. Hearts & Flowers 9" plate w/ribbed back - green - very pretty for these**
- \_\_\_ 57. Hearts & Flowers 9" plate w/BW back – purple - rare with BW back, irid. missing on edge
- \_\_\_ 58. Hearts & Flowers 9" plate w/ribbed back - marigold - scarce
- \_\_\_ 59. Maple Leaf 4 pc. table set – purple - lid to sugar bowl is blue
- \_\_\_ **60. Fashion water pitcher - purple - rare & highly desirable**
- \_\_\_ 60a. Fashion tumbler - purple - scarce
- \_\_\_ **61. Fashion water pitcher - smoke - another rare pitcher, nice**
- \_\_\_ 61a. Fashion tumbler - smoke - etched "Fern Gipson 1910"
- \_\_\_ 62. Dragon & Lotus 9" plate or low IC bowl - blue - they tried to make this a plate
- \_\_\_ 63. Dragon & Lotus 9" plate or low IC bowl - marigold - identical shape to previous
- \_\_\_ **64. Dragon & Lotus IC shaped bowl – red - has amberina base, very scarce**
- \_\_\_ 65. Dragon & Lotus IC shaped bowl – green - nice
- \_\_\_ 66. Dragon & Lotus IC shaped bowl – blue
- \_\_\_ **67. Blueberry 4 pc water set - blue - outstanding set**
- \_\_\_ **68. Blueberry 7 pc. water set - marigold - also very nice set**
- \_\_\_ **69. Hearts & Flowers ruffled compote - ice green**
- \_\_\_ **70. Hearts & Flowers ruffled compote - ice blue - nice**
- \_\_\_ 71. Hearts & Flowers ruffled compote - white
- \_\_\_ **72. Hearts & Flowers ruffled compote - aqua opal - very pretty**
- \_\_\_ 73. Hearts & Flowers ruffled compote - purple
- \_\_\_ 74. Hearts & Flowers ruffled compote - blue - electric highlights



- \_\_\_ 75. **Concord 9" plate - amethyst - scarce plate**
- \_\_\_ 76. **Concord 9" plate - marigold - very rare plate, epoxy on back of edge**
- \_\_\_ 77. Octagon 7 pc. large size water set - purple - rare set, 3 tumblers with base chips
- \_\_\_ 78. **Octagon large size water pitcher - green - these are extremely hard to find in green**
- \_\_\_ 79. Octagon 7 pc. water set - marigold
- \_\_\_ 80. **Poppy Show 9" plate - ice blue - scarce, small nick on poppy**
- \_\_\_ 81. **Poppy Show 9" plate - white - chip on poppy, small chip on collar base**
- \_\_\_ 82. **Poppy Show 9" plate - blue - scarce, silvery**
- \_\_\_ 83. **Poppy Show 9" plate - marigold - scarce**
- \_\_\_ 84. **Grape & Cable candle lamp - green - scarce & very nice**
- \_\_\_ 85. **Grape & Cable candle lamp - purple - scarce, nice**
- \_\_\_ 86. **Grape & Cable candle lamp - marigold - scarce**
- \_\_\_ 87. Horse Medallion ftd nut bowl - lime green - no marigold overlay
- \_\_\_ 88. **Grape Arbor 7 pc. tankard water set - ice blue - super pretty pitcher, has crack in handle & top edge has been polished, one tumbler also damaged**
- \_\_\_ 89. Grape Arbor 7 pc. tankard water set - white - 3 tumblers damaged
- \_\_\_ 90. **Grape Arbor 7 pc. tankard water set - purple - very nice set**
- \_\_\_ 91. Grape Arbor 7 pc. tankard water set - marigold
- \_\_\_ 92. **Stippled Grape & Cable Variant PCE bowl w/ribbed back - aqua opal - rare bowl**
- \_\_\_ 93. **Stippled Grape & Cable Variant PCE bowl w/ribbed back - ice blue - nice**
- \_\_\_ 94. Stippled Grape & Cable Variant PCE bowl w/ribbed back - blue - scarce color
- \_\_\_ 95. Round Up 9" plate - blue
- \_\_\_ 96. Round Up 9" plate - marigold
- \_\_\_ 97. **Wreathed Cherry 5 pc. water set - white w/red cherries - neat pitcher, chip on base of one tumbler**
- \_\_\_ 98. **Wreathed Cherry 4 pc. water set - purple**
- \_\_\_ 99. **Wreathed Cherry 7 pc. water set - marigold - pitcher is pretty, two tumblers with base nicks**
- \_\_\_ 100. **1910 Detroit Elks 7" ruffled bowl - blue - scarce, nice**
- \_\_\_ 101. **1910 Detroit Elks 7" ruffled bowl - green - very scarce bowl**
- \_\_\_ 102. **Acorn Burrs 4 pc. table set - green - pretty & scarce set**
- \_\_\_ 103. **Acorn Burrs 4 pc. table set - purple - chip on rim of butter dish top**
- \_\_\_ 104. **Acorn Burrs 4 pc. table set - marigold - chip on rim of butter dish lid & chip on outside edge of sugar lid**
- \_\_\_ 105. **Paneled Dandelion 7 pc. tankard water set - blue - scarce set**
- \_\_\_ 106. **Paneled Dandelion 7 pc. tankard water set - amethyst - another nice set**
- \_\_\_ 107. **Paneled Dandelion 7 pc. tankard water set - green - handle is applied on rib, nice**
- \_\_\_ 108. **Paneled Dandelion 7 pc. tankard water set - marigold - handle is applied on rib, nice**
- \_\_\_ 109. **Embroidered Mums 9" plate w/ribbed back - ice green - very scarce plate, epoxy on point**
- \_\_\_ 110. **Blackberry Open Edge ruffled basket - red**
- \_\_\_ 111. **Beaded Cable rose bowl - ice blue - flake on one foot**
- \_\_\_ 112. **Beaded Cable rose bowl - white - scarce**
- \_\_\_ 113. **Beaded Cable rose bowl - aqua opal**
- \_\_\_ 114. **Beaded Cable rose bowl - marigold**
- \_\_\_ 115. **Good Luck 9" plate w/BW back - green - very pretty, scarce**
- \_\_\_ 116. **Good Luck 9" plate w/BW back - purple - nice**
- \_\_\_ 117. **Good Luck 9" plate w/BW back - marigold - scarce, nice**
- \_\_\_ 118. **Flowers & Frames dome ftd ruffled bowl - purple**
- \_\_\_ 119. **Apple Blossom Twigs 9" plate - peach opal - nice**
- \_\_\_ 120. **Apple Blossom Twigs 9" plate - blue - silvery**
- \_\_\_ 121. **Springtime water pitcher w/1 tumbler - green - very scarce pitcher & highly desirable, a dandy**
- \_\_\_ 122. **Springtime 7 pc. water set - purple - scarce set**
- \_\_\_ 123. **Captive Rose 9" plate - amethyst - scarce color**
- \_\_\_ 124. **Captive Rose 9" plate - green - silvery**
- \_\_\_ 125. **Captive Rose 9" plate - blue**
- \_\_\_ 126. **Captive Rose 9" plate - marigold**
- \_\_\_ 127. **N's Bushel Basket - aqua opal - nice**
- \_\_\_ 128. **N's Bushel Basket - ice green**
- \_\_\_ 129. **N's Bushel Basket - white - pretty**
- \_\_\_ 130. **N's Bushel Basket - green - scarce color**
- \_\_\_ 131. **N's Bushel Basket - lavender**
- \_\_\_ 132. **N's Bushel Basket - purple**
- \_\_\_ 133. **N's Bushel Basket - blue**
- \_\_\_ 134. **N's Bushel Basket - marigold - dark, nice**
- \_\_\_ 135. **Fluffy Peacock water pitcher - blue - scarce color, will give you a damaged tumbler**
- \_\_\_ 136. **Fluffy Peacock water pitcher - green - nice, will give you a damaged tumbler**
- \_\_\_ 137. **Fluffy Peacock 7 pc. water set - amethyst - scarce**
- \_\_\_ 138. **Fluffy Peacock water pitcher - marigold - will give you one damaged tumbler**
- \_\_\_ 139. **Grape & Cable turned in centerpiece bowl - purple - scarce**
- \_\_\_ 140. **Orange Tree hatpin holder - green - the feet are chipped but very pretty**
- \_\_\_ 141. **Orange Tree hatpin holder - blue - one foot has damage**
- \_\_\_ 142. **Orange Tree hatpin holder - marigold - chip on foot**
- \_\_\_ 143. **Peacocks 9" plate w/ribbed back - green - very pretty example**
- \_\_\_ 144. **Peacocks 9" plate w/ribbed back - purple**
- \_\_\_ 145. **Peacocks 9" plate w/ribbed back - ice green**
- \_\_\_ 146. **Peacocks 9" plate w/ribbed back - white**
- \_\_\_ 147. **M'burg Trout & Fly ruffled bowl - amethyst - radium, fish is silvery**
- \_\_\_ 148. **M'burg Trout & Fly ruffled bowl - marigold - radium**
- \_\_\_ 149. **Milady tankard water pitcher & 1 tumbler - blue - a dandy**
- \_\_\_ 150. **Milady tankard water pitcher & 1 tumbler - marigold - scarce, nice**
- \_\_\_ 151. **Dragon & Lotus ruffled bowl - marigold on moonstone - rare bowl, nice even irid.**
- \_\_\_ 152. **Dragon & Lotus ruffled bowl - peach opal - scarce**
- \_\_\_ 153. **Brazier's Candies 6" advertising plate - amethyst - rare piece, nice**
- \_\_\_ 154. **M'burg Hanging Cherries IC shaped bowl - green - satin, light rubs on cherries**
- \_\_\_ 155. **M'burg Hanging Cherries IC shaped bowl - amethyst - satin**
- \_\_\_ 156. **M'burg Hanging Cherries IC shaped bowl - marigold - satin**



- \_\_\_ **157. Beaded Shell 7 pc. water set - purple - very hard set to find**
- \_\_\_ **158. Beaded Shell 7 pc. water set - marigold - also very hard to find**
- \_\_\_ 159. Grape & Cable perfume bottle - purple - silvery
- \_\_\_ 160. Embroidered Mums ruffled bowl w/ribbed back - blue
- \_\_\_ 161. Embroidered Mums ruffled bowl w/ribbed back - purple
- \_\_\_ 162. Holly 9" plate - amethyst - scarce
- \_\_\_ 163. Holly 9" plate - blue - super pretty, has "Eva" etched on back of plate
- \_\_\_ 164. Holly 9" plate - white
- \_\_\_ **165. Inverted Thistle water pitcher - amethyst - rare pitcher & highly desirable**
- \_\_\_ **165a. Inverted Thistle tumbler - amethyst - nice**
- \_\_\_ 166. Fenton's Peacock at Urn 3 in 1 edge bowl - green - scarce color, rare shape
- \_\_\_ 167. Fenton's Peacock at Urn 3 in 1 edge bowl - amethyst - scarce color, rare shape
- \_\_\_ 168. Fenton's Peacock at Urn 3 in 1 edge bowl - marigold
- \_\_\_ 169. Grape & Cable sweetmeat - purple
- \_\_\_ 170. Wild Blackberry ruffled bowl - green
- \_\_\_ 171. Wild Blackberry ruffled bowl - amethyst
- \_\_\_ 172. Wild Blackberry 3 in 1 edge bowl - marigold - nice
- \_\_\_ **173. M'burg Hobnail spittoon - amethyst - very rare & desirable**
- \_\_\_ **174. M'burg Hobnail spittoon - marigold - very rare & desirable, nice**
- \_\_\_ 175. Enameled Ground Cherries 7 pc. water set - blue - nice
- \_\_\_ 176. Fenton's Three Fruits 12 sided 9" plate - blue
- \_\_\_ 177. Fenton's Three Fruits 12 sided 9" plate - green - wear on fruit
- \_\_\_ 178. Fenton's Three Fruits 12 sided 9" plate - amethyst - light on irid.
- \_\_\_ 179. Fenton's Three Fruits 12 sided 9" plate - marigold - nice
- \_\_\_ 180. Grape & Cable PCE salad bowl - purple
- \_\_\_ 181. Lot of 4 Daisy Chain lampshades - marigold
- \_\_\_ **182. Dahlia 4 pc. table set - amethyst - chip on sugar bowl lid**
- \_\_\_ **183. Wishbone 10" PCE bowl w/BW back - white - very nice**
- \_\_\_ 184. Wishbone 10" PCE edge bowl w/BW back - marigold - nice
- \_\_\_ **185. Apple Tree water pitcher & 1 tumbler - white - very scarce**
- \_\_\_ **186. Apple Tree water pitcher & 1 tumbler - blue - nice**
- \_\_\_ 187. Apple Tree water pitcher & 1 tumbler - marigold - very pretty
- \_\_\_ 188. Leaf & Beads rose bowl - aqua opal
- \_\_\_ 189. Leaf & Beads rose bowl - green - has Sunflower interior
- \_\_\_ 190. Leaf & Beads rose bowl - purple - wear on the inside
- \_\_\_ 191. Stippled Grape & Cable Variant 9" plate w/ribbed back - blue - chip on base
- \_\_\_ **192. Stippled Grape & Cable 9" plate w/ribbed back - purple - rare color for these**
- \_\_\_ **193. Old Rose Distillery/Grape & Cable Variant 9" plate - green - nice**
- \_\_\_ 194. Butterfly bonbon w/plain back - green
- \_\_\_ **195. M'burg Trout & Fly IC shaped bowl - green - satin, scarce**
- \_\_\_ 196. Wishbone ftd ruffled bowl - blue - scarce color
- \_\_\_ 197. Wishbone ftd ruffled bowl - green
- \_\_\_ 198. Wishbone ftd ruffled bowl - light marigold
- \_\_\_ **199. Field Flower water pitcher - smoke - very pretty example, rare color**
- \_\_\_ **200. Stippled Three Fruits 9" plate w/ribbed back - aqua opal - scarce & desirable, rubbing on fruit**
- \_\_\_ **201. Stippled Three Fruits 9" plate w/ribbed back - blue - has electric highlights**
- \_\_\_ 202. Stippled Three Fruits 9" plate w/ribbed back - purple - minor rub on fruit
- \_\_\_ 203. Stippled Three Fruits 9" plate w/ribbed back - marigold - super pretty, a beauty
- \_\_\_ **204. 1910 Detroit Elks IC shaped bowl - amethyst - scarce, nice**
- \_\_\_ 205. M'burg Nesting Swan ruffled bowl - amethyst - satin, nice
- \_\_\_ 206. M'burg Nesting Swan ruffled bowl - marigold - satin, nice
- \_\_\_ **207. Wishbone epergne - purple - very scarce, nice for these**
- \_\_\_ 208. Strawberry PCE bowl w/BW back - green
- \_\_\_ **209. Grape & Gothic Arches 7 pc. water set - green - scarce color, a nice set**
- \_\_\_ 210. Grape & Gothic Arches 7 pc. water set - marigold
- \_\_\_ 211. Peacock & Grape ruffled bowl - red - cherry red color, rough spot on point
- \_\_\_ 212. Peacock & Grape ruffled bowl - marigold - pretty
- \_\_\_ 213. Grape & Cable powder jar - green
- \_\_\_ 214. Grape & Cable powder jar - purple
- \_\_\_ 215. Orange Tree w/trunk 9" plate - green - rare color, silvery
- \_\_\_ 216. Orange Tree 9" plate - blue
- \_\_\_ 217. Orange Tree 9" plate - white - nice
- \_\_\_ 218. Orange Tree 9" plate - marigold
- \_\_\_ 219. Eat Paradise Sodas 6" advertising plate - amethyst - nice
- \_\_\_ **220. Butterfly & Fern 7 pc. water set - blue - scarce color, very minor nick on one tumbler**
- \_\_\_ **221. Butterfly & Fern 7 pc. water set - green - scarce, crack in one tumbler**
- \_\_\_ 222. Butterfly & Fern 7 pc. water set - amethyst - nice
- \_\_\_ 223. Butterfly & Fern 7 pc. water set - marigold - nice, one tumbler cracked, one with minor pinpoint
- \_\_\_ **224. Hearts & Flowers PCE bowl w/ribbed back - ice green - very scarce color**
- \_\_\_ **225. Hearts & Flowers PCE bowl w/ribbed back - ice blue - very scarce**
- \_\_\_ 226. Hearts & Flowers PCE bowl w/ribbed back - white - scarce color
- \_\_\_ **227. Hearts & Flowers PCE bowl w/ribbed back - green - hard color to find**
- \_\_\_ 228. Hearts & Flowers PCE bowl w/ribbed back - blue - very pretty, electric highlights
- \_\_\_ 229. Hearts & Flowers PCE bowl w/ribbed back - marigold - lacks irid. in center of bowl
- \_\_\_ **230. M'burg Hanging Cherries 4 pc. table set - marigold - rare set, butter dish base has several chips around edge**
- \_\_\_ 231. Grape & Cable fernery - purple - scarce item
- \_\_\_ 232. Vintage powder jar - marigold
- \_\_\_ **233. Quill water pitcher - amethyst - very scarce pitcher & highly desirable**
- \_\_\_ 233a. Quill tumbler - amethyst
- \_\_\_ **234. Quill water pitcher - marigold - also scarce, nice**



- \_\_\_ 234a. Quill tumbler - marigold
- \_\_\_ **235. Wishbone ftd 9" plate - green - rare color for these**
- \_\_\_ 236. Wishbone ftd 9" plate - purple
- \_\_\_ 237. Fruits & Flowers bonbon - ice green - pretty, chip on base
- \_\_\_ **238. Fruits & Flowers bonbon - ice blue - scarce**
- \_\_\_ 239. Fruits & Flowers bonbon - aqua opal - butterscotch, nice
- \_\_\_ 240. Fruits & Flowers bonbon - olive green - unusual color & nice!
- \_\_\_ 241. Fruits & Flowers bonbon - blue - pretty
- \_\_\_ 242. Fruits & Flowers bonbon - purple
- \_\_\_ 243. Fruits & Flowers bonbon - marigold - nice
- \_\_\_ **244. Fentonia 7 pc. water set - blue - rare set**
- \_\_\_ **245. Fentonia water pitcher & 1 tumbler - marigold**
- \_\_\_ 246. Good Luck PCE bowl w/BW back - green
- \_\_\_ 247. Good Luck PCE bowl w/ribbed back - blue - has sharp point
- \_\_\_ 248. Good Luck PCE bowl w/BW back - purple
- \_\_\_ 249. Good Luck PCE bowl w/ribbed back - marigold - lots of excess glass between points
- \_\_\_ 250. Raspberry ftd ruffled compote - ice blue - typical minor nick on corner of one foot
- \_\_\_ 251. Raspberry ftd ruffled compote - green - typical nick on side of one foot
- \_\_\_ 252. Raspberry ftd ruffled compote - purple - nick on side of one foot, looks as if irid. over
- \_\_\_ 253. Raspberry ftd ruffled compote - marigold
- \_\_\_ **254. Greek Key 9" plate w/BW back - green - rare plate**
- \_\_\_ **255. Greek Key 9" plate w/BW back - marigold - very nice, rare**
- \_\_\_ **256. Grand Thistle 5 pc. tankard water set - blue - two tumblers have nicks, rare set, neat shape**
- \_\_\_ **257. Grand Thistle 5 pc. tankard water set - amber - two tumblers have been buffed all the way around base**
- \_\_\_ 258. Fenton Peacock at Urn 9" plate - blue
- \_\_\_ 259. Fenton Peacock at Urn 9" plate - white - silvery
- \_\_\_ 260. Fenton Peacock at Urn 9" plate - marigold
- \_\_\_ 261. Blackberry Spray ruffled hat - red - tiny pinpoint on edge
- \_\_\_ **262. Hearts & Flowers ruffled bowl w/ribbed back - amethyst - scarce**
- \_\_\_ 263. M'burg Peacock at Urn master IC shaped bowl - green - satin, scarce, minor nick on collar base
- \_\_\_ 264. M'burg Peacock at Urn master IC shaped bowl - amethyst - satin
- \_\_\_ 265. M'burg Peacock at Urn master IC shaped bowl - marigold - satin, nice
- \_\_\_ **266. Palm Beach water pitcher & 1 tumbler - honey amber - scarce, nice**
- \_\_\_ **267. Palm Beach water pitcher & 1 tumbler - white - heat check in base of pitcher, tumbler is light sun colored**
- \_\_\_ **268. Peacocks ruffled bowl w/ribbed back - ice blue - super pretty for these!**
- \_\_\_ **269. Peacocks ruffled bowl w/ribbed back - aqua opal - nice**
- \_\_\_ 270. Imperial Grape water carafe - purple - nice
- \_\_\_ **271. Grape & Cable 6 pc. whiskey set - purple - rare set, one shot has base chip**
- \_\_\_ 272. Fine Cut & Roses rose bowl - white - tiny pinpoint on one foot
- \_\_\_ 273. Fine Cut & Roses rose bowl - green
- \_\_\_ 274. Fine Cut & Roses rose bowl - amethyst
- \_\_\_ 275. M'burg Zig Zag ruffled bowl - amethyst - satin
- \_\_\_ **276. Peach 7 pc. water set - white w/gold decoration - very rare set**
- \_\_\_ **277. Peach 7 pc. water set - blue - another rare set, nice, 2 tumblers have damage**
- \_\_\_ 278. Nippon PCE bowl w/ribbed back - ice blue
- \_\_\_ 279. Nippon PCE bowl w/plain back - white - nice
- \_\_\_ **280. M'burg Trout & Fly square bowl - marigold - satin, nice**
- \_\_\_ 281. Wild Strawberry 10" ruffled bowl - purple
- \_\_\_ 282. Stippled Three Fruits ruffled bowl w/ribbed back - aqua opal - minor hit on one cherry in center
- \_\_\_ 283. Stippled Three Fruits ruffled bowl w/ribbed back - white
- \_\_\_ 284. Stippled Three Fruits ruffled bowl w/ribbed back - blue
- \_\_\_ 285. Stippled Three Fruits ruffled bowl w/ribbed back - purple - nice
- \_\_\_ 286. M'burg Hobnail swirl rose bowl - marigold
- \_\_\_ **287. Blackberry Block 7 pc. tankard water set - blue - rare set & highly desirable**
- \_\_\_ **288. Blackberry Block 7 pc. tankard water set - marigold - nice, scarce**
- \_\_\_ 289. Holly ruffled hat shape - red
- \_\_\_ 290. Peacock & Grape 9" plate - marigold
- \_\_\_ 291. Grape & Cable cup & saucer - purple
- \_\_\_ 292. Pansy low ruffled bowl - lavender - nice
- \_\_\_ 293. Lotus & Grape 3 in 1 edge bowl - green
- \_\_\_ 294. Drapery rose bowl - aqua opal - butterscotch
- \_\_\_ **295. Wishbone water pitcher & 1 tumbler - purple - very rare pitcher, minor pinpoint on spout**
- \_\_\_ **296. Wishbone 7 pc. water set - marigold - another rare set**
- \_\_\_ 297. Three Fruits PCE bowl w/BW back - green
- \_\_\_ 298. Three Fruits PCE bowl w/BW back - marigold
- \_\_\_ **299. Lotus & Grape 9" plate - green - rare plate, nice**
- \_\_\_ 300. Dragon & Lotus 3 in 1 edge bowl - green
- \_\_\_ 301. Dragon & Lotus 3 in 1 edge bowl - amethyst - very pretty, small nick on back of one point
- \_\_\_ 302. Dragon & Lotus 3 in 1 edge bowl - marigold
- \_\_\_ 303. Nippon ruffled bowl w/ribbed back - blue - rare color
- \_\_\_ 304. Nippon ruffled bowl w/BW back - purple
- \_\_\_ **305. Orange Tree Orchard 7 pc. water set - blue - crack around top of handle**
- \_\_\_ **306. Orange Tree Orchard water pitcher & 1 tumbler - marigold - nice**
- \_\_\_ **307. Rose Show ruffled bowl - ice green - scarce bowl & nice**
- \_\_\_ **308. Rose Show ruffled bowl - ice blue - also nice**
- \_\_\_ 309. Rose Show ruffled bowl - white - scarce
- \_\_\_ **310. Rose Show ruffled bowl - green - rare color, small chip on collar base**
- \_\_\_ 311. Rose Show ruffled bowl - aqua opal - chip/epoxy between ruffle
- \_\_\_ 312. Rose Show ruffled bowl - marigold - nice
- \_\_\_ 313. Pony 6 ruffled bowl - purple - pony's head is pretty
- \_\_\_ 314. Concord 3 in 1 edge bowl - green
- \_\_\_ 315. Concord 3 in 1 edge bowl - amethyst
- \_\_\_ **316. Singing Birds 7 pc. water set - green - scarce, one tumbler with minor hit on base**
- \_\_\_ **317. Singing Birds 7pc. water set - purple**
- \_\_\_ **318. Singing Birds 7pc. water set - marigold - nice**



- \_\_\_ 319. Fenton's Peacock at Urn 6 ruffled bowl - white - nice
- \_\_\_ 320. Fenton's Peacock at Urn 8 ruffled bowl - amethyst - chip on collar base
- \_\_\_ 321. Fenton's Peacock at Urn 8 ruffled bowl - blue
- \_\_\_ 322. Fenton's Peacock at Urn 8 ruffled bowl - marigold
- \_\_\_ 323. Rising Sun small size water pitcher w/one juice glass - marigold
- \_\_\_ 324. Persian Medallion 10" 3 in 1 edge bowl - amethyst
- \_\_\_ 325. Stippled Peacocks 9" plate w/ribbed back - blue - tiny pinpoint between points
- \_\_\_ **326. Stippled Peacocks 9" plate w/ribbed back - marigold - scarce**
- \_\_\_ 327. Fanciful 9" plate - white
- \_\_\_ **328. Butterfly & Berry 7 pc. water set - blue**
- \_\_\_ 329. Captive Rose IC shaped bowl - marigold
- \_\_\_ **330. Stippled Grape & Cable ruffled bowl w/ribbed back - green - scarce color & pretty**
- \_\_\_ 331. Stippled Grape & Cable Variant ruffled bowl w/ribbed back - purple
- \_\_\_ 332. Stippled Rays crimped edge 10" square bowl - amethyst
- \_\_\_ **333. Stork & Rushes 7 pc. water set - blue**
- \_\_\_ 334. Stork & Rushes 7 pc. water set - marigold - one tumbler chipped
- \_\_\_ 335. Stippled Strawberry ruffled bowl w/ribbed back - purple
- \_\_\_ **336. Stippled Three Fruits Medallion spt ftd ruffled bowl - aqua opal - scarce**
- \_\_\_ **337. Ten Mums tankard water pitcher & 1 tumbler - blue - rare set, highly desirable**
- \_\_\_ **338. Ten Mums tankard water pitcher & 1 tumbler - marigold - hard to find**
- \_\_\_ 339. Grape & Cable master IC bowl - purple
- \_\_\_ **340. Utah Liquor Co. advertising 6" plate - amethyst - rare & desirable, nice**
- \_\_\_ 341. Dragon & Lotus spt ftd IC shaped bowl - smoke - rare color
- \_\_\_ **342. Orange Tree ftd water pitcher & 1 tumbler - white - the feet are mint, scarce**
- \_\_\_ **343. Orange Tree ftd water pitcher & 1 tumbler - blue**
- \_\_\_ 344. Orange Tree ftd water pitcher & 1 tumbler - marigold - minor nick on one foot of pitcher & tumbler
- \_\_\_ 345. Three Fruits dome ftd ruffled bowl - lime green - scarce color
- \_\_\_ 346. Grape & Cable cvd compote - purple
- \_\_\_ 347. Greek Key ruffled bowl w/BW back - green - nice
- \_\_\_ **348. Singing Birds 4 pc. table set - purple - scarce set, nick on spooner base**
- \_\_\_ 349. Heavy Iris tankard water pitcher & 1 tumbler - marigold
- \_\_\_ 350. Vintage small size epergne - green bottom, blue lily
- \_\_\_ 351. Stippled Three Fruits PCE bowl w/ribbed back - marigold - nice
- \_\_\_ **352. Acorn Burrs 7 pc. water set - green - super pretty set**
- \_\_\_ **353. Acorn Burrs 7 pc. water set - purple - scarce set**
- \_\_\_ **354. Acorn Burrs 7 pc. water set - marigold - another nice set**
- \_\_\_ 355. Ribbon Tie 3 in 1 edge low bowl - blue
- \_\_\_ **356. Butterfly & Berry hatpin holder - blue - very rare hatpin holder, highly desirable**
- \_\_\_ 357. Hobstar Band ftd water pitcher & 1 tumbler - marigold
- \_\_\_ **358. Peacock at the Fountain 4 pc. table set - purple - super pretty set, as nice as I've seen**
- \_\_\_ **359. Peacock at the Fountain 4 pc. table set - marigold - sugar lid has chips, creamer is cracked**
- \_\_\_ 360. Grapevine Lattice tankard water pitcher - purple - age?
- \_\_\_ 361. God & Home tumbler - blue
- \_\_\_ 362. Horse Medallion ftd ruffled bowl - green
- \_\_\_ 363. Horse Medallion ftd ruffled bowl - marigold
- \_\_\_ **364. Bouquet 7 pc. water set - blue - nice**
- \_\_\_ 365. Good Luck ruffled bowl w/BW back - purple
- \_\_\_ 366. Leaf Chain 6 ruffled bowl - marigold
- \_\_\_ **367. M'burg Big Fish IC shaped bowl - amethyst - satin & very nice, rare**
- \_\_\_ 368. Jeweled Hearts ftd water pitcher & 1 tumbler - marigold - neat pitcher
- \_\_\_ 369. Honeycomb & Beads tri-cornered crimped edge bowl - purple - pretty, nick on edge
- \_\_\_ 370. Flute #2 tumbler - purple
- \_\_\_ **371. N's Dandelion tankard water pitcher - lavender - super pretty pitcher, rare color, neat!**
- \_\_\_ **372. N's Dandelion tankard water pitcher w/2 tumblers - green - very pretty, rare**
- \_\_\_ **373. N's Dandelion 7 pc. tankard water set - purple - super set**
- \_\_\_ **374. N's Dandelion 7 pc. tankard water set - marigold - very nice set**
- \_\_\_ 375. M'burg Seaweed 10" ruffled bowl - amethyst - satin & pretty, several nicks on base
- \_\_\_ 376. Lotus & Grape ruffled bowl - blue
- \_\_\_ 377. Four Flowers Variant 9" plate - purple - nicks on base
- \_\_\_ 378. Vineyard water pitcher & 1 tumbler - marigold
- \_\_\_ 379. Peacock & Grape spt ftd ruffled bowl - red - chip on cleat
- \_\_\_ **380. Poppy Show ruffled bowl - ice blue - large chip on edge**
- \_\_\_ **381. Poppy Show ruffled bowl - white - nice**
- \_\_\_ **382. Poppy Show ruffled bowl - purple**
- \_\_\_ **383. Poppy Show ruffled bowl - marigold**
- \_\_\_ **384. Raspberry water pitcher - ice blue - very rare pitcher, highly desirable & nice**
- \_\_\_ **385. Raspberry water pitcher - white - very pretty, tiny pinpoint on base**
- \_\_\_ 386. Open Edge basket - red AND Peacock & Grape ruffled bowl - blue AND Peacock & Grape 3 in 1 edge bowl - amethyst - ALL have damage
- \_\_\_ 387. Three Fruits PCE bowl - purple AND Stippled Strawberry bowl - blue AND Hearts & Flowers ruffled bowl - ice green - ALL have damage
- \_\_\_ 388. Two sets of candlesticks AND sugar w/out lid - marigold
- \_\_\_ 389. 1976 HOACGA Good Luck whiskey set - red
- \_\_\_ 390. Pair of Contemporary vases - marigold
- \_\_\_ 391. Heavy Iris 7 pc. tankard water set - purple - contemporary
- \_\_\_ 392. 1990 HOACGA room display Hobnail spittoon - red
- \_\_\_ 393. Lot of 6 pieces Carnival Glass - all damaged



**Seeck Auctions**  
**PO Box 377**  
**Mason City, Iowa**  
**50402**

PRESORTED  
 FIRST CLASS MAIL  
 US POSTAGE  
 PAID  
 MAIL EXPEDITORS

233



67

**Carnival Glass &  
 Kerosene Lamp**  
**2015 Auction**

**6 p.m., Fri., Nov. 20**  
**9:30 a.m., Sat., Nov. 21**

**Crowne Plaza**  
**Airport Hotel**  
**St. Louis, Mo.**

T3 P1 536  
 LEE MARKLEY  
 BOX 306  
 MENTONE IN 46539-0306



299



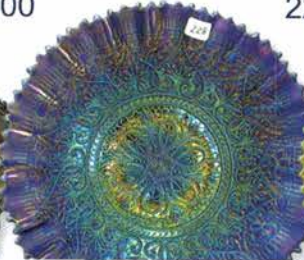
268



100



228



143



67



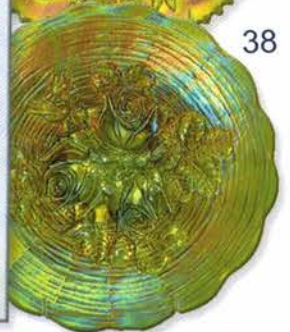
173



371



38



22



358



102



384

