

Senior Activity Center  
326 4th St NE  
Mason City, Iowa



101

# Carnival Glass 2015 Auction

Saturday, September 19



10



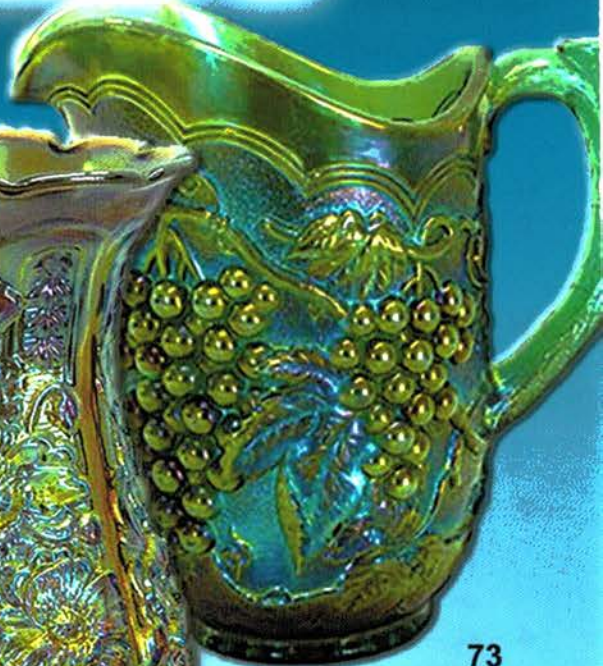
79



122



251



73

Jim and Jan Seeck

*Seeck* Auctions

641-424-1116

JIM & JAN SEECK

# Carnival Glass Auction

641-424-1116

**Saturday, September 19 — 9:30 AM**

**Senior Activity Center**

**Mason City, Iowa**

From South: Take US Hwy 65 into Mason City and turn right or East on 4th ST NE, go 2 blocks  
From North: Take US Hwy 65 into Mason City and turn left or East on 4th ST NE, go 4 blocks

This is the brown building on the West end of the block

**Preview: Friday, September 18, 3 pm – 6 pm**

## **NO BUYER'S PREMIUM—OPEN TO THE PUBLIC**

**ABSENTEE BIDDING** is available on-line through Auction Flex using our online catalog at [www.seeckauction.com](http://www.seeckauction.com)

★ *Absentee bidding closes Fri., Sept. 18 at 9 p.m. CST*

Please email us and we will put you on our email mailing list for auction notices.

e-mail: [jimjan@seeckauction.com](mailto:jimjan@seeckauction.com)

## **THE DEMICHAEL COLLECTION**

Seeck Auctions is pleased to be selling the Mary Jo and Tony DeMichael Collection of Carnival Glass from Illinois. They have put together an outstanding collection of glass over the years. We'd love to see you in Mason City for this beautiful collection of glass at auction!

### **Lodging**

Mason City: Holiday Inn Express – (641)424-1200; Quality Inn – (641)423-4444; Country Inn & Suites – (641)423-1770; Super 8 – (641)423-8855; Clear Lake: AmericInn – (641)357-8954; Best Western Holiday Lodge (641)357-5253.

**Terms:** Cash or Check, VISA, MasterCard & Discover accepted w/proper ID. 4% Clerking Fee on all purchases made using credit cards. Announcements made day of sale take precedence over any printed information.

### **We have 3 options for absentee bidding for our live auctions:**

- 1) **If you DO NOT have internet access, you can:** Call us by phone to enter your bids at (641)424-1116 **OR** by sending the numbers of the item(s) desired and the amount bid on each to: Seeck Auctions, PO Box 377, Mason City, Iowa 50402. We would prefer you call us with your bids rather than send them in a letter.) We will enter your bids into our online bidding system.  
★ Have all written bids in by **Wed., Sept. 16**
- 2) **Enter your bids from our website into our online catalog through the Auction Flex system.**
  - ◆ **First-time bidders: Set up your account** by creating a user name and password and filling out basic information. You will also need to **register for the auction** which will ask you to enter a valid credit card number. This card will be validated by a one time only charge of \$1 charge to your card. **You will use this user name and password for all our auctions.**
  - ◆ You are not required to pay by credit card if you are successful with your online bid. We will let you know what you owe us through an email and you can decide how you would like to pay us.
  - ◆ An exciting advantage to online bidding is that you can be notified by email if you are outbid on an item, which lets you increase your bid in time, or bid on something else. **There is a cutoff date and time, for each auction, for entering your bids online.** ★ **Online absentee bidding for this auction closes Friday Sept. 18 at 9 p.m. CST.**
  - ◆ Remember that just because you are the high bidder in the online catalog, this does not mean you have won the item. Your bid still needs to **beat** the floor bidders and live phone bidders. If your high bid lands with a floor bidder during the live auction, the floor bidder takes precedence. You might want to bid higher on a highly desired item for a better chance at winning its absentee bid.
  - ◆ If you do not receive an item that sold for less than your bid, assume we canceled your bid because the item had a severe manufacture problem, damage, or was not listed correctly.
- 3) **Live phone bidding is available on pieces with an estimated sale price of \$500 or more.** ★ Contact us by the **Thursday before the auction, which is Sept. 17.** We will need to know the lot# and the phone number that you can be reached at on the day of the auction. We also need your home phone number if different than the above number.

Please call with questions: 641-424-1116.

**If you win an online bid** you will be notified by phone or e-mail between one to three days after the auction.

**There is a \$7 handling charge for each successful bid, with shipping and insurance charges additional.**

**ONLINE BID INCREMENTS:** \$1 - \$100/\$5    \$100 - \$200/\$10    \$200 - \$700/\$25    \$700 - \$1,500/\$50  
\$1,500 - \$3,000/\$100    \$3,000 - \$5,000/\$250    \$5,000+ Auctioneer's Discretion

- \_\_\_ 1. Freefold 12" vase - amber - scarce color, has 3 pouring spouts
- \_\_\_ 2. Freefold 12" vase - purple - pretty
- \_\_\_ 3. Freefold 11" vase - smoke
- \_\_\_ 4. Freefold 11" vase - green - has wide mouth
- \_\_\_ 5. Freefold 12" vase - marigold - pretty
- \_\_\_ 6. Cosmos & Cane 4" berry sauce - honey amber - 1" crack in side
- \_\_\_ 7. Snow Fancy cream & sugar - marigold
- \_\_\_ 8. Fine Cut & Roses rose bowl - green - chip on foot
- \_\_\_ 9. Pineapple creamer & open sugar - marigold
- \_\_\_ **10. Tree Trunk 18 1/2" funeral vase - blue - super pretty, collector's favorite, WOW!**
- \_\_\_ 11. M'burg Peacock Tail Variant ruffled compote - amethyst - radium, 2 minor nicks on base
- \_\_\_ **12. Stag & Holly lg size IC shaped ftd bowl - blue - fantastic, a beauty, start of a great run**
- \_\_\_ **13. Stag & Holly lg size IC shaped ftd bowl-amethyst- super nice, scarce color**
- \_\_\_ **14. Stag & Holly lg size IC shaped ftd bowl - aqua - scarce color, nice**
- \_\_\_ 15. Stag & Holly lg size IC shaped ftd bowl - amber - very pretty
- \_\_\_ 16. Stag & Holly lg size IC shaped ftd bowl - pink - pretty
- \_\_\_ 17. Stag & Holly lg size IC shaped ftd bowl - marigold
- \_\_\_ **18. Poppy Show 9" plate - green - very rare color for these plates, has an emerald look, pretty!**
- \_\_\_ **19. Poppy Show 9" plate - marigold - pretty pink & yellow irid.**
- \_\_\_ 20. Scroll Embossed lg ruffled bowl w/File back- purple- electric
- \_\_\_ 21. Scroll Embossed lg ruffled bowl w/File back - smoke - nice
- \_\_\_ **22. Chatelaine 5 pc. water set - purple - super pretty set, lots of blue irid., large chip on base of pitcher**
- \_\_\_ 23. Double Loop chalice or open sugar - aqua - very scarce color, most are aqua opal
- \_\_\_ **24. Grape & Cable master 7 pc. ice cream set - ice green - very rare color, hard to find in a set**
- \_\_\_ 25. Heavy Grape 10" ruffled master berry bowl - purple - super
- \_\_\_ 26. Heavy Grape 10" ruffled master berry bowl - amber - pretty
- \_\_\_ **27. Poinsettia & Lattice ftd ruffled bowl - ice blue - super nice w/pretty irid.**
- \_\_\_ **28. Poinsettia & Lattice ftd ruffled bowl- horehound- very rare color w/super irid.!**
- \_\_\_ **29. Poinsettia & Lattice ftd ruffled bowl - blue - has electric highlights, scarce color**
- \_\_\_ **30. Poinsettia & Lattice ftd ruffled bowl - marigold - dark & super, many would call pumpkin**
- \_\_\_ **31. Poinsettia & Lattice ftd ruffled bowl - purple - very dark purple, nice**
- \_\_\_ 32. Poinsettia & Lattice ftd ruffled bowl - custard w/nutmeg stain - not Carnival Glass
- \_\_\_ 33. Poinsettia & Lattice ftd ruffled bowl - white opal - not Carnival Glass
- \_\_\_ **34. Tree Trunk 12 1/2" midsize vase - lime green - fantastic irid., a great start to an outstanding line up of Tree Trunks**
- \_\_\_ **35. Tree Trunk 10" vase - ice green - scarce color, nice**
- \_\_\_ **36. Tree Trunk 6 3/4" squatty vase - ice green - dark, super pretty irid., very scarce**
- \_\_\_ **37. Tree Trunk 11 1/2" midsize vase - ice blue - another dandy!**
- \_\_\_ **38. Tree Trunk 6 1/2" squatty vase - ice blue - very pretty irid.**
- \_\_\_ **39. Tree Trunk 12 1/2" midsize vase- blue- super nice**
- \_\_\_ 40. Tree Trunk 10" vase - blue - super
- \_\_\_ **41. Tree Trunk 13" midsize vase - green - fantastic, beautiful!!**
- \_\_\_ 42. Tree Trunk 10 1/2" vase - green - nice
- \_\_\_ 43. Tree Trunk 6 1/4" squatty vase - green - super nice
- \_\_\_ **44. Tree Trunk 11 1/2" midsize vase - purple - one of the best!**
- \_\_\_ 45. Tree Trunk 8 3/4" vase - purple - very pretty
- \_\_\_ 46. Tree Trunk 7" squatty vase - purple - nice
- \_\_\_ **47. Tree Trunk 13 3/4" midsize vase - marigold - one of the better ones! minor nick on base**
- \_\_\_ **48. Tree Trunk 11" vase - aqua opal - really pretty!!**
- \_\_\_ 49. M'burg Blackberry Wreath IC sauce - amethyst - radium, nice
- \_\_\_ 50. M'burg Blackberry Wreath IC sauce - amethyst - satin, nice
- \_\_\_ **51. Broken Arches 8 pc. punch set - purple - scarce set, inside of bowl is fantastic**
- \_\_\_ 52. Thin Rib & Drape 5 1/2" vase - marigold
- \_\_\_ 53. Thin Rib & Drape 6" vase - marigold
- \_\_\_ **54. M'burg Hanging Cherries 7 pc. water set - green- great set, pitcher is pretty and so are tumblers, all the way around!**
- \_\_\_ 55. Horse Medallion 7" plate - marigold
- \_\_\_ **56. Flute 7 pc. berry set - purple - super pretty, one sauce with minor nick on top edge**
- \_\_\_ **57. Vintage IC shaped sauce - celeste blue - loaded with stretchy irid., this thing is incredible**
- \_\_\_ 58. Imperial Flute punch bowl & base - marigold
- \_\_\_ 59. Imperial Flute punch cups (4) - green
- \_\_\_ **60. Peacocks 9" plate w/plain back - green - very pretty example, scarce**
- \_\_\_ **61. Peacocks 9" plate w/ribbed back - blue - has electric highlights**
- \_\_\_ **62. Peacocks 9" plate w/plain back - ice green - super pretty**
- \_\_\_ 63. Dugan Thin Panels crimped edge JIP 6 1/2" vase - peach opal - nice
- \_\_\_ **64. Rose Show 9" plate - ice green - very pretty irid. for this rare plate**
- \_\_\_ **65. Rose Show 9" plate - purple - rare color, nice**
- \_\_\_ 66. Heavy Grape 8" plate - purple - super
- \_\_\_ 67. Leaf & Beads rose bowl - aqua opal-butterscotch, nice
- \_\_\_ **68. Homestead chop plate - amber - super pretty irid., with great mold work**
- \_\_\_ **69. NUART Homestead chop plate - purple - scarce, nice**
- \_\_\_ **70. Homestead chop plate - pastel marigold - has stretchy, smokey irid., some might call clambroth, some smoke, very nice piece**

- \_\_\_ 71. Carolina Dogwood ruffled bowl - blue opal
- \_\_\_ 72. Fishscale & Beads 7" plate - marigold - super, covered in yellow irid.
- \_\_\_ 73. Imperial Grape water pitcher - aqua - fantastic blue irid. on this rare pitcher, rarer than the emerald greens
- \_\_\_ 74. Imperial Grape 7 pc. water set - purple - entire set is super pretty
- \_\_\_ 75. Imperial Grape water pitcher & one tumbler - marigold
- \_\_\_ 76. Dragon & Strawberry ftd ruffled bowl - green - very scarce, highly desirable & nice
- \_\_\_ 77. Rococo vase - marigold - pretty
- \_\_\_ 78. Brocaded Palms 7" hddl plate - ice green
- \_\_\_ 79. Loganberry vase - purple - fantastic, rare
- \_\_\_ 80. Loganberry vase - marigold - super nice
- \_\_\_ 81. Luster Rose ftd fernery - purple - has several chips on outside edge
- \_\_\_ 82. Scroll Embossed lg size ruffled compote - marigold
- \_\_\_ 83. Peacock at the Fountain ruffled fruit bowl - blue - very scarce & highly desirable, nice
- \_\_\_ 84. Peacock at the Fountain ruffled fruit bowl - purple - super! from the Marie Capps collection
- \_\_\_ 85. Peacock at the Fountain ruffled fruit bowl - marigold - nice
- \_\_\_ 86. Scroll Embossed 8" ruffled bowl - green - super pretty, some may call emerald
- \_\_\_ 87. Scroll Embossed 8" ruffled bowl - purple - covered with blue irid.
- \_\_\_ 88. Scroll Embossed deep round bowl - purple - super pretty
- \_\_\_ 89. Leaf Tiers water pitcher & 2 tumblers - marigold - 1" crack in collar base, both tumblers have checks in feet
- \_\_\_ 90. Peacock at Urn master IC bowl - purple - nice
- \_\_\_ 91. Peacock at Urn IC sauces (2) - purple - nice
- \_\_\_ 92. Peacock at Urn 7 pc. IC set - marigold - great set
- \_\_\_ 93. Peacock at Urn IC sauces (2) - blue - nice
- \_\_\_ 94. Stippled Three Fruits Medallion ftd ruffled bowl - aqua opal - very pretty, nice opal, chip on point
- \_\_\_ 95. Stippled Three Fruits Medallion ftd ruffled bowl - marigold - pretty
- \_\_\_ 96. Diamond Point 11 1/2" vase - sapphire - rare vase, stretched out more than most sapphire ones
- \_\_\_ 97. Diamond Point 11" vase - green - very pretty
- \_\_\_ 98. Diamond Point 11" vase - purple - very pretty
- \_\_\_ 99. Diamond Point 6 1/2" squatty vase - purple - pretty, interesting flared top
- \_\_\_ 100. Fashion 7 pc. water set - marigold
- \_\_\_ 101. Grape & Cable 14 pc. master punch set - blue - extremely rare color for these highly desirable sets, super pretty, rare opportunity
- \_\_\_ 102. Cathedral or Curved Star chalice - marigold
- \_\_\_ 103. Quincy Jewelers Adv. Peacock Tail ruffled hat - green
- \_\_\_ 104. Coin Dot 7" ruffled bowl - green - has a radium type irid., neat
- \_\_\_ 105. Rustic 24" funeral vase w/plunger base - amethyst - super pretty irid. and rare at this height, has minor rough spot at top of one point, impressive piece
- \_\_\_ 106. Rustic 21 1/2" funeral vase w/plunger base - green - has fantastic irid.! beautiful, has two manufacture splits on base, WOW
- \_\_\_ 107. Fenton Grape & Cable 7" banana boat shaped dish - marigold - rare whimsy
- \_\_\_ 108. Rose Show Variant ruffled bowl - renninger blue - very pretty irid. for these, chip on point
- \_\_\_ 109. Two Flowers lg size ftd ruffled bowl - lime green - super pretty, rare color
- \_\_\_ 110. Two Flowers lg size ftd ruffled bowl - marigold - nice
- \_\_\_ 111. Stretch Glass Rib Optic creamer & sugar - red - rare set, minor manufacture split on top edge of sugar
- \_\_\_ 112. Oriental Poppy 3 pc. tankard water set - green - tankard has cracks
- \_\_\_ 113. Oriental Poppy 3 pc. tankard water set - purple - super pretty pitcher & tumblers
- \_\_\_ 114. Oriental Poppy 7 pc. tankard water set - marigold - dark & nice, great matching set
- \_\_\_ 115. Fenton's Peacock at Urn 6 ruffled bowl - blue - very pretty
- \_\_\_ 116. Beaded Bullseye 12" vase - amber - super pretty
- \_\_\_ 117. Beaded Bullseye 12" vase - purple - great irid.!
- \_\_\_ 118. Beaded Bullseye 10" vase - purple - another beauty!
- \_\_\_ 119. Beaded Bullseye 7" squatty vase - purple - super
- \_\_\_ 120. Beaded Bullseye 12" vase - marigold - neat shape, nice
- \_\_\_ 121. Beaded Bullseye 8" squatty vase - marigold - another nice one
- \_\_\_ 122. Stippled Grape & Cable PCE bowl w/ribbed back - aqua opal - pastel & very pretty, rare
- \_\_\_ 123. Stippled Grape & Cable Variant PCE bowl w/ribbed back - aqua opal - butterscotch & nice
- \_\_\_ 124. Drapery Variant 7 pc. lemonade set - marigold - pretty irid.
- \_\_\_ 125. Stag & Holly lg size ftd ruffled deep bowl - amethyst - super irid.
- \_\_\_ 126. Stag & Holly lg size ftd ruffled deep bowl - marigold
- \_\_\_ 127. Stag & Holly lg size ftd ruffled deep bowl - marigold - pastel irid.
- \_\_\_ 128. M'burg Peacock 6 pc. berry set - amethyst - radium, nice
- \_\_\_ 129. Four Pillars 7" squatty vase - aqua opal - butterscotch, chip on one toe
- \_\_\_ 130. Four Pillars 8" vase - blue - buffed spot on side of rib
- \_\_\_ 131. Panther centerpiece bowl - marigold - a beauty, highly desirable, great opportunity
- \_\_\_ 132. Persian Medallion hair receiver - blue - scarce
- \_\_\_ 133. Singing Birds 7 pc. water set - green - pretty set
- \_\_\_ 134. Windmill milk pitcher - marigold - very pretty
- \_\_\_ 135. Rose Show ruffled bowl - green - very pretty example, repaired chip on petal of rose
- \_\_\_ 136. Rose Show ruffled bowl - aqua opal - pastel & beautiful
- \_\_\_ 137. Feathered Serpent lg size ruffled bowl - marigold - nice
- \_\_\_ 138. Imperial Grape saucer - smoke - rare color
- \_\_\_ 139. Rustic 19" funeral vase - red - not Carnival Glass, extremely rare piece, highly desirable
- \_\_\_ 140. Rustic 20 1/2" funeral vase - white - super pretty, rare color, minor burst in bottom of base

- \_\_\_ **141. Rustic 20" funeral vase - amethyst - very pretty irid., nice**
- \_\_\_ 142. Four Flowers Variant 10" ruffled bowl - blue - non American
- \_\_\_ 143. Four Flowers ruffled bowl - amber - rare color, nice
- \_\_\_ 144. Strawberry ruffled bowl w/plain back - green
- \_\_\_ **145. Peacock at the Fountain 4 pc. table set- marigold- very scarce set & nice**
- \_\_\_ 146. Fenton's Grape & Cable ftd ruffled fruit bowl w/Persian Medallion interior - blue - nice
- \_\_\_ 147. Nippon PCE bowl w/ribbed back - aqua - rare color, minor nick on base
- \_\_\_ 148. Horse Medallion ftd ruffled bowl- green- scarce color
- \_\_\_ 149. Horse Medallion ftd ruffled bowl-amethyst-very pretty
- \_\_\_ **150. Miniature Morning Glory 5" squatty vase - smoke - hard to find in this squatty size**
- \_\_\_ 151. Miniature Morning Glory 7 1/2" vase - smoke
- \_\_\_ 152. Miniature Morning Glory 4 1/2" vase - marigold - has flared top
- \_\_\_ 153. Miniature Morning Glory 6 1/2" vase - marigold
- \_\_\_ **154. Wreath of Roses 4 pc. round punch set - green - Persian Medallion interior, rare set & nice**
- \_\_\_ **155. Wreath of Roses round punch bowl, base & 1 cup - amethyst - Persian Medallion interior, pretty, burst in collar base of bowl**
- \_\_\_ 156. Wreath of Roses 8 pc. round punch set - marigold- Vintage interior, nick off sharp point of bowl, 2 cups chipped
- \_\_\_ 157. Chrysanthemum lg size ftd IC shaped bowl -blue - nice
- \_\_\_ 158. Stag & Holly giant rose bowl - marigold - pretty
- \_\_\_ 159. Two Flowers lg size ftd IC shaped bowl - marigold -nice
- \_\_\_ **160. Lattice & Grape 4 pc. tankard water set - blue - very pretty pitcher**
- \_\_\_ 161. Good Luck ruffled bowl w/ribbed back - marigold- pastel irid.
- \_\_\_ 162. Lined Lattice 10" vase - purple - nice
- \_\_\_ **163. Scroll & Flower Panel vase - clambroth - very rare & nice vase, highly desirable**
- \_\_\_ 164. Stag & Holly lg size ftd ruffled bowl - aqua - scarce color, three buffed points & chip on edge
- \_\_\_ **165. Stag & Holly lg size ftd ruffled bowl - lime green - very pretty**
- \_\_\_ **166. Stag & Holly lg size ftd ruffled bowl - smoke - very rare color, nice**
- \_\_\_ 167. Grape & Gothic Arches 7 pc. water set - marigold - one tumbler with burst in base
- \_\_\_ **168. M'burg Fleur de Lis tri-cornered crimped edge dome ftd bowl - green - radium, typical small nick on saw tooth base, rare & very nice**
- \_\_\_ 169. Golden Pansy relish tray - clear w/marigold
- \_\_\_ 170. Stag & Holly spt ftd ruffled bowl - green
- \_\_\_ **171. Ripple 20" funeral vase - purple - 4 5/8" base, 4 chips on ribs on lower half of base**
- \_\_\_ **172. Ripple 14 1/2" funeral vase - marigold - 4 5/8" base, manufacture peeling on base**
- \_\_\_ 173. Ripple 14" vase - smoke - 3 7/8" base, nice
- \_\_\_ 174. Ripple 15" vase - light pastel blue base - 3 7/8" base, marigold overlay, odd shaped top
- \_\_\_ 175. Ripple 12 1/2" vase - purple - 3 3/8", polished chip on top edge
- \_\_\_ 176. Ripple 11" vase - aqua teal - 2 7/8" base
- \_\_\_ 177. Ripple 8" vase - amber - 2 7/8" base, very nice
- \_\_\_ 178. Ripple 5 1/2" vase - marigold - 2 1/2" base
- \_\_\_ 179. Ripple 6" vase - marigold - 2 1/2" base
- \_\_\_ 180. Ripple 7" base - marigold - 2 1/2" base
- \_\_\_ 181. Ripple 8 3/4" vase - marigold - 2 1/2" base
- \_\_\_ **182. Imperial Grape 8 pc. punch set - purple - loaded with blue irid., a beautiful set, one cup with chip**
- \_\_\_ 183. Curved Star square 8" bowl - marigold - Brockwitz, unusual shape
- \_\_\_ **184. Fluffy Peacock 5 pc. water set - amethyst - two tumblers with base chips**
- \_\_\_ 185. Nippon ruffled bowl w/BW back - marigold - super pretty, very minor burst in collar base
- \_\_\_ 186. Starburst creamer & open sugar - blue - Rihimaki, super set
- \_\_\_ 187. Captive Rose 3 in 1 edge bowl - green - nice
- \_\_\_ **188. M'burg Rosalind 10" IC shaped bowl - marigold - satin & pretty**
- \_\_\_ 189. Three Fruits PCE bowl w/BW back - horehound - neat bowl
- \_\_\_ 190. M'burg Holly Sprig crimped edge sauce - amethyst - radium
- \_\_\_ 191. Hobstar Band 4 pc. water set - marigold - pitcher has chips, one tumbler chipped
- \_\_\_ 192. Two Flowers ftd ruffled master berry bowl - blue - manufacture open bubble on bottom of foot
- \_\_\_ **193. Stippled Peacock at Urn master IC bowl - marigold - scarce, very pretty**
- \_\_\_ 194. Diamond Rib 6 1/2" squatty vase - amethyst - nice, this is a cutie
- \_\_\_ **195. Palm Beach whimsey banana boat shaped dish - marigold - made from small sauce, another cutie**
- \_\_\_ 196. Palm Beach whimsey banana boat shaped dish - amethyst w/goofus decoration
- \_\_\_ 197. Palm Beach rose bowl - amethyst w/goofus decoration
- \_\_\_ 198. Palm Beach rose bowl w/gooseberry interior - white w/silver trim - repaired chip on base
- \_\_\_ 199. Palm Beach whimsey tri-cornered shaped dish - amethyst w/goofus decoration
- \_\_\_ 200. Smooth Panels 11" vase - smoke - 4 3/8" base, 8" mouth, nice
- \_\_\_ 201. Smooth Panels 8" vase - marigold - 3 1/2" base, 6" mouth
- \_\_\_ 202. Smooth Panels 8 1/2" vase - teal stretch - 2 1/2" base
- \_\_\_ 203. Smooth Panels 4 1/2" vase - marigold - 2 1/2" base
- \_\_\_ 204. Imperial Jewels 5" vase - amethyst - neat vase, has Imperial Cross Mark
- \_\_\_ **205. Stag & Holly chop plate - marigold - scarce, nice**
- \_\_\_ 206. Garland rose bowl w/painted decoration - blue
- \_\_\_ 207. Wishbone ftd ruffled bowl - ice blue - scarce, one foot damaged, is chipped in half
- \_\_\_ 208. Wishbone ftd ruffled bowl - purple
- \_\_\_ **209. Acorn Burrs pitcher - marigold - pastel & super**
- \_\_\_ 210. Lot of 5 Acorn Burrs tumbler - marigold - dark
- \_\_\_ 211. Field Thistle 9" round bowl - marigold - chip on back of point
- \_\_\_ **212. Pony 10 ruffled bowl - ice green - super pretty example**

- \_\_\_ 213. Gothic Arches 15 1/2" vase - marigold - nice
- \_\_\_ **214. Orange Tree 9" plate - blue - pretty**
- \_\_\_ 215. Grape & Cable shot glasses (2) - marigold - both dark, one with chip on base
- \_\_\_ 216. Peacock & Grape ruffled bowl - amethyst with slag streak
- \_\_\_ 217. Leaf Chain ruffled bowl - marigold
- \_\_\_ 218. Target 12 1/2" vase - purple - super pretty, minor nick on base
- \_\_\_ **219. Peacocks ruffled bowl w/ribbed back - aqua opal - very pretty, pastel**
- \_\_\_ **220. Peacocks ruffled bowl w/ribbed back - green - scarce color**
- \_\_\_ **221. Peacocks ruffled bowl w/ribbed back - lavender - scarce**
- \_\_\_ 222. Peacocks ruffled bowl w/ribbed back - marigold - nice
- \_\_\_ 223. Dandelion mug - blue - pretty
- \_\_\_ 224. Dandelion mug - purple - nice
- \_\_\_ 225. Pineapple open sugar - marigold
- \_\_\_ **226. Fenton Peacock at Urn 9" plate - blue - super pretty, a dandy**
- \_\_\_ 227. Fenton's Fine Rib 9 1/2" vase - aqua - nice
- \_\_\_ 228. Fenton's Fine Rib 10" vase - green - scarce color
- \_\_\_ 229. Fenton's Fine Rib 10 1/2" vase - apple green - unusual color
- \_\_\_ 230. Orange Tree 5 pc. water set - marigold - one foot polished on pitcher, one tumbler has minor nick on foot
- \_\_\_ 231. Grape & Cable creamer - green
- \_\_\_ 232. Grape & Cable spooner - green
- \_\_\_ 233. Curved Star w/Headdress interior 11" ruffled bowl - marigold
- \_\_\_ 234. Curved Star compote or punch bowl base - blue
- \_\_\_ **235. Open Rose 9" plate - purple - super pretty, scarce**
- \_\_\_ **236. Derby 8" vase - marigold - scarce, nice**
- \_\_\_ **237. Derby 6 1/2" vase - amethyst - cute vase**
- \_\_\_ **238. Poppy Show ruffled bowl - marigold - dark & beautiful**
- \_\_\_ 239. Heavy Grape punch cup - purple - pretty
- \_\_\_ **240. M'burg Peacock at Urn 10" ruffled bowl - green - satin, pretty, repaired chip on back of edge**
- \_\_\_ **241. M'burg Peacocks 10" ruffled bowl - marigold - radium, very pretty**
- \_\_\_ 242. Pinecone 6" plate - marigold
- \_\_\_ **243. Grape & Cable midsize punch bowl & base - top is lavender, bottom is marigold - very rare top, very few known, looks pretty good together**
- \_\_\_ 244. Imperial Grape 11" ruffled bowl - purple - has lots of blue irid.
- \_\_\_ 245. Wild Strawberry handgrip 7" plate - marigold - pretty
- \_\_\_ **246. Hearts & Flowers ruffled compote - green - very rare, has pretty irid.**
- \_\_\_ 247. Hearts & Flowers ruffled compote - aqua opal - a collector's favorite
- \_\_\_ 248. Fisherman's mug - purple - pretty, chips on base
- \_\_\_ 249. M'burg Diamonds water pitcher - marigold - chip on side of base
- \_\_\_ 250. Cherry Chain 10" ruffled bowl - blue - super pretty irid.
- \_\_\_ **251. Poppy Show vase - smoke - an outstanding example, from the Whitley collection**
- \_\_\_ **252. Poppy Show vase - marigold - dark, nice**
- \_\_\_ 253. Shell & Sand round bowl - purple - super
- \_\_\_ 254. Shell & Sand ruffled bowl - purple - super
- \_\_\_ 255. Leaf Tiers creamer - marigold
- \_\_\_ **256. Grape & Cable 7 pc. water set - green - pretty set, one tumbler has nick**
- \_\_\_ 257. Fashion lg round bowl - marigold - pastel, has yellow tint
- \_\_\_ 258. Grape & Cable Variant 9" plate w/BW back - purple
- \_\_\_ **259. Two Flowers giant ftd rose bowl - marigold - super pretty irid., rare**
- \_\_\_ 260. Butterfly & Berry master berry bowl - blue
- \_\_\_ **261. Orange Tree Orchard water pitcher - marigold - scarce**
- \_\_\_ 262. N's Thin Rib 10" vase - blue - super, nick on top edge
- \_\_\_ **263. M'burg Fleur de Lis dome ftd deep round bowl - green - radium, very rare shape, epoxy on point, epoxy on tooth of base, has an emerald green look**
- \_\_\_ 264. Garden Path Variant deep ruffled bowl - marigold
- \_\_\_ **265. M'burg Rosalind 10" ruffled bowl - green - satin, nice**
- \_\_\_ **266. Daisy & Drape flared out vase - marigold - super pretty, rare in this shape**
- \_\_\_ 267. Daisy & Drape turned in vase - marigold - scarce
- \_\_\_ 268. M'burg Hanging Cherries butter dish - purple - scarce, nice
- \_\_\_ 269. Three Fruits 9" plate w/BW back - marigold
- \_\_\_ 270. M'burg Blackberry Wreath ruffled sauce - amethyst - radium
- \_\_\_ 271. Cosmos 10" ruffled bowl - marigold - has radium type irid.
- \_\_\_ **272. Stippled Grape & Cable small size fruit bowl - blue - scarce color especially stippled, electric highlights**
- \_\_\_ 273. Western Thistle pitcher - marigold - Rihimaki, scarce & nice
- \_\_\_ 274. Orange Tree IC shaped bowl - blue
- \_\_\_ 275. Sunflower spt ftd ruffled bowl - purple
- \_\_\_ **276. M'burg Peacock at Urn Mystery bowl - green - satin, pretty**
- \_\_\_ 277. Luster Rose 11" ruffled bowl - amber - nice
- \_\_\_ 278. Imperial Grape carafe - purple - pretty
- \_\_\_ 279. Orange Tree ftd fruit bowl - marigold
- \_\_\_ **280. Butterfly & Fern water pitcher - green - nice**
- \_\_\_ **281. Stippled Grape & Cable 9" plate w/ribbed back - green - nice**
- \_\_\_ 282. Imperial Jewels 10" flared bowl - marigold - has Imperial Cross Mark
- \_\_\_ **283. Peacocks PCE bowl w/plain back - white - very scarce, very pretty**
- \_\_\_ 284. April Showers 6 1/2" squatty vase - blue
- \_\_\_ 285. Good Luck PCE bowl w/ribbed back - green
- \_\_\_ 286. Vintage 9" ruffled bowl - amber - very scarce color, tiny nick on base
- \_\_\_ **287. Grape & Cable small size punch bowl & base - marigold - scarce, nice**
- \_\_\_ 288. Scroll Embossed small size ruffled compote - purple
- \_\_\_ 289. Long Thumbprint 6 1/2" squatty vase - lime green - unusual spout top

- \_\_\_ 290. **M'burg Seaweed 3 in 1 edge 10" bowl - marigold - satin, nice**
- \_\_\_ 291. N's Thin Rib 10 1/2" vase - ice blue - nice
- \_\_\_ 292. Wishbone 10" ruffled bowl - green - 3 small nicks on collar base
- \_\_\_ 293. Fentonia butter dish top - marigold - has wrong base
- \_\_\_ 294. Peacock Tail ruffled hat - green
- \_\_\_ 295. Diamond Lace water pitcher - purple - super pretty
- \_\_\_ 296. Little Fishes ftd ruffled sauce - marigold
- \_\_\_ 297. M'burg Grape Wreath Variant IC shaped sauce - amethyst - radium, pretty
- \_\_\_ 298. Grape & Cable Variant ruffled bowl w/BW back-green
- \_\_\_ 299. Acanthus chop plate - smoke - scarce
- \_\_\_ 300. Acorn ruffled bowl - marigold
- \_\_\_ 301. **M'burg Peacock crimped edge 10" bowl - green - radium, nice**
- \_\_\_ 302. Open Rose 8" deep round bowl - amber - couple minor nicks on interior flowers
- \_\_\_ 303. **Stippled Peacocks 9" plate w/ribbed back - marigold - pastel & pretty w/lots of pink, outstanding plate**
- \_\_\_ 304. Stippled Three Fruits ruffled bowl w/ribbed back - purple - nick on edge filled with epoxy
- \_\_\_ 305. Pillar Flute dome ftd round 5" bowl - clambroth - has Imperial Cross Mark
- \_\_\_ 306. Lot of 2 Stretch Glass pieces
- \_\_\_ 307. **M'burg Bullseye & Loop 7" squatty vase - green - rare color, rare vase, super nice**
- \_\_\_ 308. Freefold 13" vase - purple - nice
- \_\_\_ 309. Freefold 11 1/2" vase - smoke
- \_\_\_ 310. Freefold 14" vase - marigold - fairly tall for these
- \_\_\_ 311. Freefold 7 1/2" squatty vase w/ruffled top - clambroth - neat
- \_\_\_ 312. Stag & Holly lg IC shaped ftd bowl - blue - chip on point, pretty
- \_\_\_ 313. Stag & Holly lg size deep ruffled ftd bowl - marigold
- \_\_\_ 314. Rose Show ruffled bowl - aqua opal - pastel, large epoxy chip on rose
- \_\_\_ 315. Heavy Grape 8" plate - purple - pretty
- \_\_\_ 316. N's Peacock at Urn master IC bowl - marigold - very pretty, chip on collar base
- \_\_\_ 317. N's Peacock at Urn IC sauce - purple - pretty
- \_\_\_ 318. Tree Trunk 13" midsize vase - purple
- \_\_\_ 319. **Wreath of Rose punch bowl & base - marigold - plain interior, fantastic! manufacture open bubble on base of bowl**
- \_\_\_ 320. Free Fold 11" vase - purple
- \_\_\_ 321. Freefold 10" vase - marigold
- \_\_\_ 322. Poinsettia & Lattice ftd ruffled bowl - blue - large chip on back edge of bowl
- \_\_\_ 323. **Stippled Strawberry 9" plate - marigold - very scarce, super pretty**
- \_\_\_ 324. Tree Trunk 6 1/2" squatty vase - green - very nice
- \_\_\_ 325. **Morning Glory 12" funeral vase - purple - fantastic, 9" mouth, minor nick on side of base**
- \_\_\_ 326. **Morning Glory 17 1/2" funeral vase - smoke - rare vase**
- \_\_\_ 327. Fenton's Fine Rib 10 1/2" vase - aqua
- \_\_\_ 328. **M'burg Trout & Fly ruffled bowl - lavender - fabulous satin irid., the fish is super!!**
- \_\_\_ 329. M'burg Diamonds tumblers (3) - amethyst - 1 iridized, 2 unridized, the iridized has been buffed around top edge
- \_\_\_ 330. M'burg Diamonds tumbler - aqua - scarce color
- \_\_\_ 331. M'burg Diamond tumblers (2) - green
- \_\_\_ 332. Flute #2 tumbler - purple - super pretty
- \_\_\_ 333. Blueberry tumblers (3) - marigold - light one has large burst in base
- \_\_\_ 334. Raspberry tumbler - purple - nice
- \_\_\_ 335. Strawberry Scroll tumblers (2) - marigold - one has chip on top edge
- \_\_\_ 336. Windmill tumbler - purple - nice
- \_\_\_ 337. Butterfly & Berry tumbler - green - scarce color
- \_\_\_ 338. Olympic Tudor tumbler - marigold - JAIN
- \_\_\_ 339. Fashion tumbler - smoke - scarce color
- \_\_\_ 340. Grape & Cable tumbler - purple - pretty
- \_\_\_ 341. Milady tumbler - blue
- \_\_\_ 342. Greek Key tumbler - purple
- \_\_\_ 343. Imperial Grape tumbler - purple
- \_\_\_ 344. Brides Bouquet tumbler - marigold - JAIN
- \_\_\_ 345. Imperial Flute #1 tumbler - purple - fantastic
- \_\_\_ 346. Tiger Lily tumbler - purple - super
- \_\_\_ 347. Dugan Peacock at the Fountain tumbler - purple
- \_\_\_ 348. Starburst tumbler - blue - Rihimaki
- \_\_\_ 349. Field Flower tumbler - purple - age?
- \_\_\_ 350. Lot of Carnival Glass - marigold - all with damage
- \_\_\_ 351. Lot of Carnival Glass - all with damage

Seeck Auctions  
 PO Box 377  
 Mason City, Iowa  
 50402

PRESORTED  
 FIRST CLASS MAIL  
 US POSTAGE  
 PAID  
 MAIL EXPEDITORS

34



Carnival Glass  
 2015 Auction  
 Sat., Sept 19  
 9:30 a.m.

Senior Activity Center  
 Mason City, Iowa

T4 P1 119  
 LEE MARKLEY  
 BOX 306  
 MENTONE IN 46539-0306

