

# WWWCGA Convention 2015 August 19th - 22nd

Auction is on the 22nd at 9:30 AM CST

## Best Western Airport Inn and Conference Center

6815 W Kellogg (US 54), Wichita, KS, 67209

Phone: (316) 942-5600 Room rate - \$85.99 per night mention WWWCGA convention

**Absentee Bidding:** Absentee bidding is available via our "Auction Flex" bidding system located on our homepage at [www.jimwrodauction.com](http://www.jimwrodauction.com). You may also email us, or mail your absentee bids. You can also do "live phone" bids. Just give us a call at 937.548.7835 to set up your item schedule. There is a \$7.00 per successful bid fee. Items will be shipped within 5 days after payment is received. We reserve the right to cancel ANY bid for ANY reason. We will cancel all bids on an item if damage is found during the auction. *We reserve the right to withdraw any damaged item from the auction before the bidding starts.*

**Terms & Conditions:** Cash, Travelers checks, business or personal checks w/I.D. Visa/ MC & Dis. with a 3% clerking fee

**Jim Wroda Auctions- Jim Wroda Auctioneer**

### Program of Events for the 2015 WWWCGA Convention in Wichita KS.

#### Wednesday, August 19

9:00 AM - Registration starts

9:00 AM - Dealer Setup

*If you are bringing glass to sell and want to set up and sell from the Center Courtyard, please contact Mitchell Stewart (931-260-0915) to reserve you space.*

**Lunch on your own**

730 PM - Ice Cream Social

#### Thursday, August 20

9:00 AM - Dealer Setup and Sales

**Lunch on your own**

3:00 PM - SEMINAR (KENDA & BILL JESKE)

5:30 PM - Pizza Party

#### Friday, August 21

10:00 AM - SEMINAR (DOROTHY & EMMETT MORGAN)

**Lunch on your own**

3:00 PM - Show & Tell: LANCE HILKENE

*Members bring your Emerald Green Carnival Glass for display and discussion.*

6:00 PM - BANQUET (Reception w/ Cash Bar)

6:30 PM - Dinner

*White Elephant Sale: Our membership can bring glass, new or old; books; area goodies, etc. Proceeds from this sale go to the club.*

**Banquet Speaker: BRIAN PITMAN.**

**Auction Preview: after Banquet till 9:30 CST**

#### Saturday, August 22

8:00 AM - Auction Preview

9:30 AM - Auction Starts

**HAVE A SAFE TRIP HOME!**

**Convention Fees for entire week are just \$35.00 per person!!**

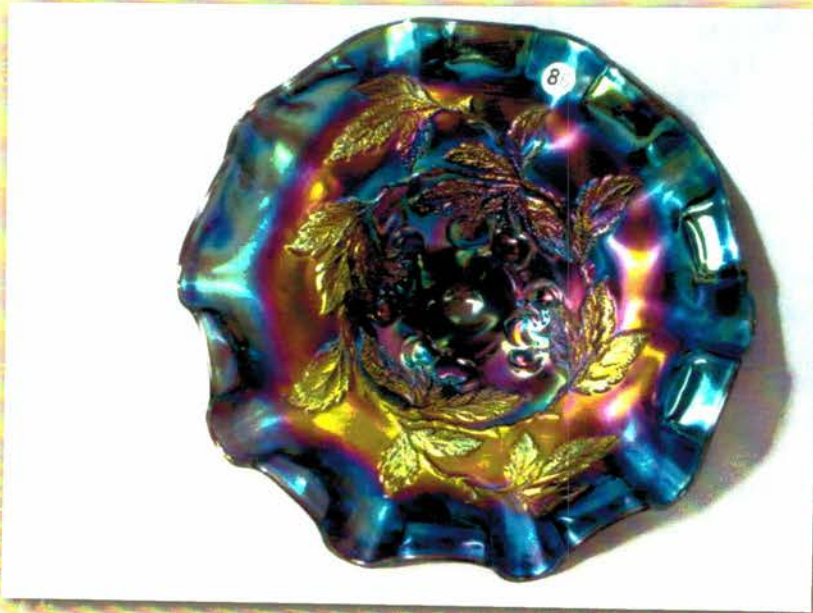
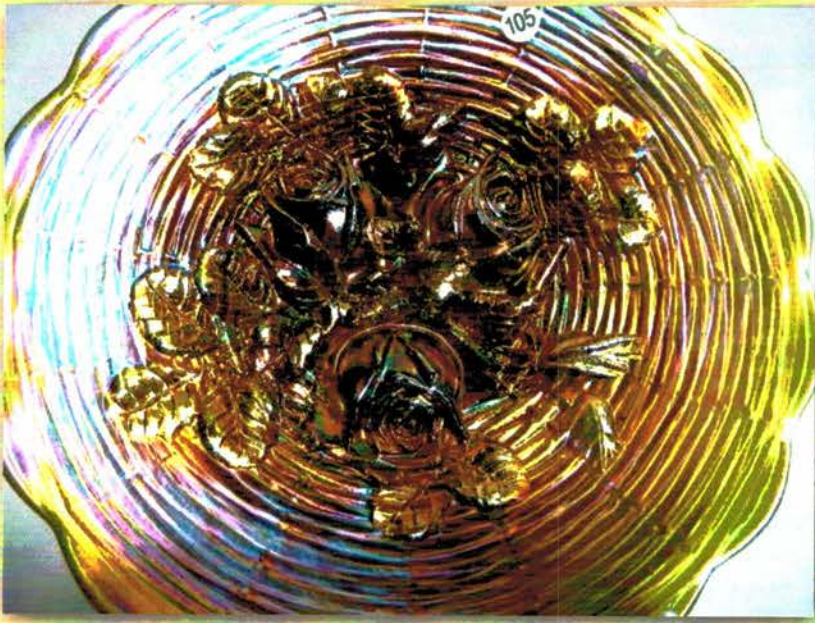
**Convention Registration: (\$10.00 per person & Banquet: \$25.00 per person)**

#### **Hotel Information**

**Best Western Airport Inn and Conference Center**

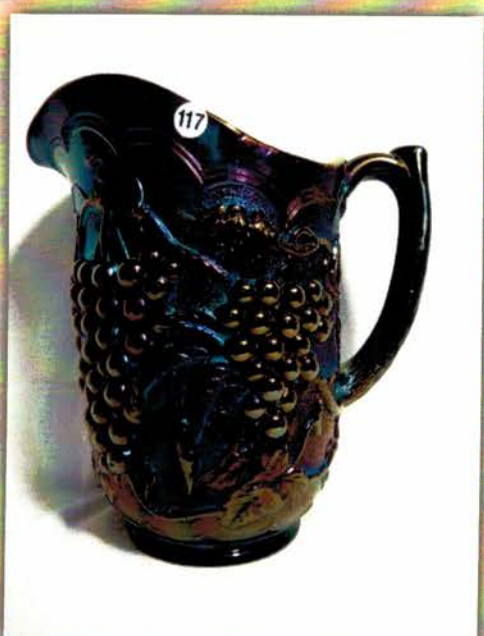
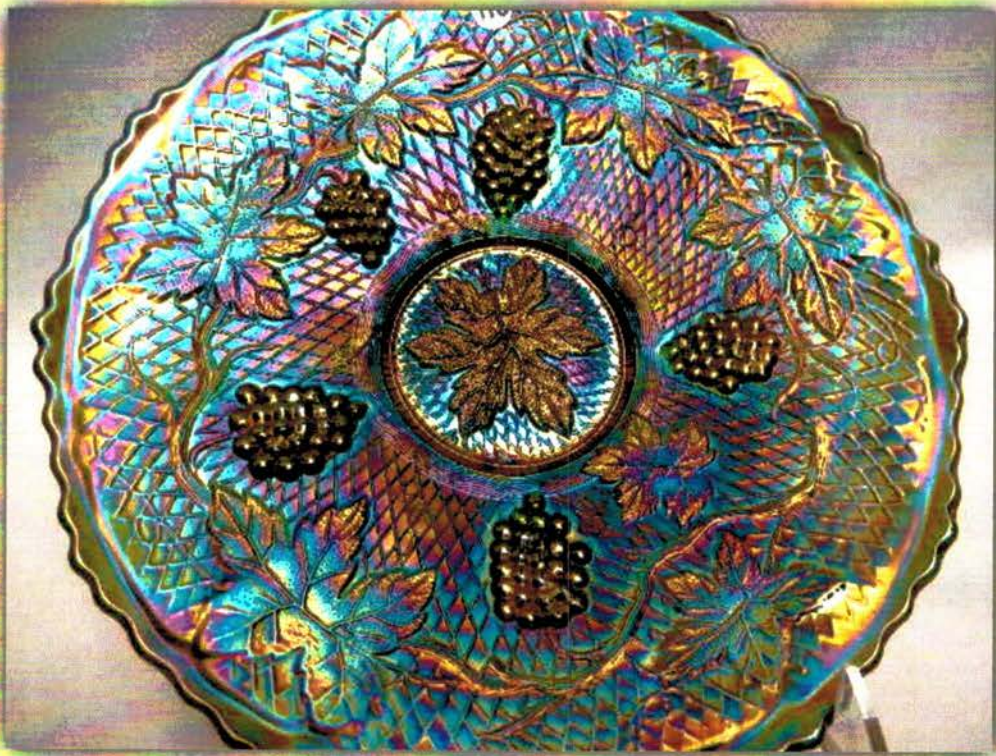
6815 W Kellogg (US 54), Wichita, KS, 67209 Phone: (316) 942-5600

Room rate - \$85.99 per night mention WWWCGA convention



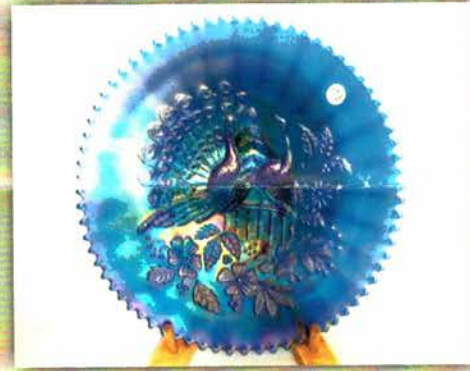
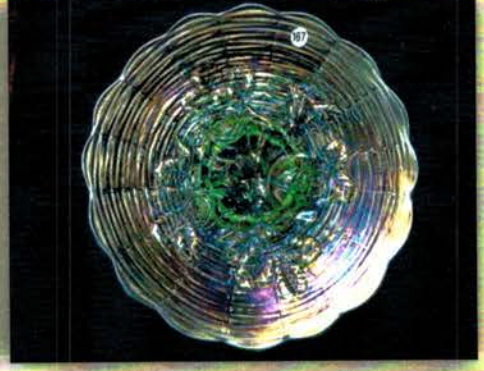
## August 22, 2015 WWWCGA Carnival Auction Listing

- |    |   |    |  |
|----|---|----|--|
| 1  | Mari Mayflower shade  | 51 | Fenton Scotch Thistle green compote  |
| 2  | Mari 9" Vintage 3-1 edge bowl                                 | 52 | Fenton mari Peacock at Urn compote   |
| 3  | Nwood bright mari Fine Cut & Roses candy dish                 | 53 | WONDERFUL Imp 12" elec purple Freefold vase  |
| 4  | Fenton 8" green Heart & Vine CRE bowl                         | 54 | Imp 10' elec purple Open Rose centerpiece bowl Scarce  |
| 5  | Dugan 9" mari Carolina Dogwood dome ft'd bowl                 | 55 | Imp 10" pastel mari Open Rose centerpiece bowl   |
| 6  | Fenton mari Orange Tree fruit bowl                            | 56 | Mburg 9" rad purple Nesting Swans ruffled bowl Real nice bowl                                    |
| 7  | mari Ashtray  | 57 | Fenton 8" blue Ribbon Tie 3-1 edge bowl  |
| 8  | Cambridge small Buzz star cruet- no stopper                   | 58 | Dugan purple Leaf Ray nappy  |
| 9  | Nwood purple G&C spooner                                      | 59 | Fenton Powder blue Grape & Cable low fruit bowl w/PM int.  |
| 10 | Fenton blue OE Blackberry Spray 6.5" 2 sided hat              | 60 | Dugan 9" purple Wishbone & Spades ruffled bowl Scarce and very nice color                        |
| 11 | Imp Grape mari water pitcher & 2 tumblers                     | 61 | Imp 8" smoke Windmill deep round bowl  |
| 12 | Super mari Oriental Poppy 7pc water set.                      | 62 | Nwood 9" Peacocks stippled PCE bowl w/ nice elec hi-lights                                       |
| 13 | Imp GREEN Hobstar Flower compote. Scarce                      | 63 | Nwood 9" purple Grape Leaves ruffled bowl  |
| 14 | Imp MARI Hobstar Flower compote.                              | 64 | Imp elec purple Windmill milk pitcher NICE!  |
| 15 | Imp purple Hobstar Flower compote. Nice elec hi-lights        | 65 | Nwood 8" purple Rose Show ruffled bowl.  |
| 16 | HOACGA Light blue Corn vase basket                            | 66 | Nwood 9" green Wild Strawberry ruffled bowl  |
| 17 | Dugan 10" crystal Heart ruffled bowl                          | 67 | Nwood 7" purple Wild Strawberry HG plate   |
| 18 | Dugan 10" crystal Jeweled Heart HG plate in shape of a heart  | 68 | Mburg 10" purple Peacock at Urn MIC bowl   |
| 19 | Fenton mari 10" Stag Holly large bowl                         | 69 | Mburg 9" green Nesting Swans ruffled bowl  |
| 20 | Nwood 8.5' pastel mari Greek Key ruffled bowl Very nice bowl  | 70 | Mburg mari 9" Primrose ruffled bowl  |
| 21 | Imp 10" pastel mari Blaze ICS bowl- HOT                       | 71 | Nwood 8.5" purple Strawberry PCE bowl  |
| 22 | 2 M burg crystal Ohio Star juice tumblers                     | 72 | Nwood 9" blue Good Luck PCE bowl   |
| 23 | Dugan Butterfly & Tulip deep round bowl                       | 73 | Nwood mari Memphis 5pc berry set   |
| 24 | Fenton mari Orange Tree 6pc punch set                         | 74 | Fenton pumpkin mari Panther master berry bowl  |
| 25 | Nwood AO Fruits & Flowers compote                             | 75 | RARE Green Fenton Butterfly & Berry master berry bowl.   |
| 26 | Fenton blue Orange Tree loving cup                            | 76 | Fenton blue Orange Tree 5pc water set. couple tiny nicks on toe but nothing big. just mentioning |
| 27 | Fenton blue/ Butterfly & Berry creamer                        | 77 | Green Four Flowers Vari low ruffled 9" bowl.   |
| 28 | Mburg set of 6 mari Blackberry Wreath bowls                   | 78 | Imp purple Hattie deep round bowl.   |
| 29 | Fenton 7" IB 3 row hat. Small fracture in one par of webbing. | 79 | Imp Heavy Grape 9" amber bowl. Scarce  |
| 30 | Fenton 8" blue Orange tree ICS bowl Pretty                    | 80 | European Pumpkin Mari 7" stemmed vase (could not find pattern) .                                 |
| 31 | Nwood green Daisy & Plume rosebowl w/ rasp int                | 81 | Fenton 9" purple 3 Fruits 12 sided plate   |
| 32 | Nwood IB Fine Cut & Roses rosebowl                            | 82 | Imp 8" purple Windmill pickle dish.  |
| 33 | Nwood 9" bright mari Tree Trunk vase                          | 83 | Dugan 9" elec purple Cherries ruffled bowl   |
| 34 | WOW Nwood elec purple G&C tumbler                             | 84 | Fenton 9" blue Holly 3-1 edge bowl   |
| 35 | Nwood IB Grape Arbor tumbler                                  | 85 | Fenton 9" blue Peacock & Grape ruffled bowl  |
| 36 | Mburg rad mari Feather Heart tumbler                          | 86 | Dugan 8" elec purple Cherries 10 ruffled bowl  |
| 37 | RARE Imp BLUE Flute toothpick. VERY HARD TO FIND!             | 87 | Mburg 10" green Blackberry Wreath 3-1 edge bowl  |
| 38 | SURPRISE  | 88 | Nwood pastel mari G&C large compote.. A beauty!  |
| 39 | Fenton blue Orange Tree punch top., very nice color           | 89 | Nwood 9" green Fruits and Flowers 6 ruffled bowl   |
| 40 | Nwood mari Fruits & Flowers compote                           | 90 | Nwood 8" pastel mari Wishbone ft'd bowl SUPER!   |
| 41 | Dugan 6" PO 4 Flowers plate                                   | 91 | Nwood G&C Blue banana boat   |
| 42 | Hyacinth lamp base.   | 92 | Fenton 6" blue Holly CRE hat- RARE   |
| 43 | Dugan 9" Elec purple Round Up low ruffled bowl A looker!      | 93 | Dugan 7" PO Pinched wide rib vase.   |
| 44 | Fenton 6" purple Vintage tri-corner tray                      | 94 | Nwood blue Poppy Pickle dish   |
| 45 | Imp Grape wine-green  | 95 | Nwood purple G&C low fruit bowl  |
| 46 | Imp 9" green bowl   | 96 | Nwood pastel mari Peacock at Fountain 7pc berry set. Nicely matched                              |
| 47 | Imp grape PC & Vintage tumbler                                |    |  |
| 48 | Mburg purple Hobnail Swirl Rosebowl                           |    |  |
| 49 | Dugan pumpkin mari grape Delight rosebowl                     |    |  |
| 50 | Nwood 9" mari Nippon PCE bowl w/ rib back                     |    |  |



- 97 LARGE mari coin dot "drum" vase. No information on this vase that I have found...
- 98 Fenton 9" pale green Persian Medallion 3-1 edge bowl.
- 99 Dugan 9" PO Ski Star CRE turned down edge bowl
- 100 Nwood pastel mari G&C spooner. WOW!
- 101 Pair celeste Florentine candle sticks
- 102 Nwood 9" purple G&C plate w/ PB Very sharp!
- 103 Nwood 9" purple G&C plate w/ PB Very sharp! match to 102
- 104 Fenton 5" mari OE 2 sides up hat.
- 105 Nwood elec. green Rose Show Plate. BEAUTIFUL plate! Way better than normal!
- 106 Nwood 8" white Poppy Show ruffled bowl
- 107 RARE Nwood IG Peacock at Fountain compote. these are usually silvery... this one is full of colors!! some may call base lime.
- 108 Nwood 8.5" purple Good Luck ruffled bowl. Pretty
- 109 Nwood 9" pastel mari Peacocks stippled plate. Very nice color.. Does has base chip- see photo
- 110 Dugan 8" elec purple Border Plants 3-1 edge bowl w/ fantastic color
- 111 Dugan 10" elec purple Petal & Fan ruffled bowl Here's one to look at!
- 112 Dugan mari Formal Hatpin Holder. DARK!
- 113 Mburg 9" green Zig Zag tri corner 3-1 edge bowl. SCARCE
- 114 Mburg green 5 pc Blackberry Wreath berry set w/ 3-1 edge. Scarce set to find. Nice radium color
- 115 Imp 8" elec purple Star of David ruffled bowl. This is one hot bowl!
- 116 Imp 8" elec purple Scroll Embossed deep round bowl
- 117 Imp elec purple Grape water pitcher w/ tremendous color!
- 118 WOW! Fenton 9" blasting elec green Concord plate. BEAUTIFUL PLATE! BUY IT! You will be VERYHAPPY with this
- 119 Fenton RED 5.5" Waterlily ft'd sauce No excuses here. This is how RED should look!
- 120 Fenton dark mari Butterfly & Berry hatpin holder A GEM!!
- 121 OK Let the debate begin! The absolute FINEST Fenton 9" elec blue Holly plate I have ever seen! If you want a common plate that is worth 10 to 20 times normal... here it is.. this is Fenton elec blue to the max!
- 122 Fenton 8" Vaseline Opal Dragon & Lotus ft'd bowl
- 123 Dugan 11" ice blue Big Basketweave vase. RARE! and very frosty!
- 124 Nwood 9" pumpkin mari G&C stippled plate. SUPER! Tougher plate than you may think
- 125 Nwood 8.5" pumpkin mari Three Fruits stippled ruffled bowl.
- 126 Fenton 8.5" VASELINE Peacock at Urn ICS bowl Rare bowl
- 127 Fenton 5" VASELINE 2 Flowers ft'd ruffled bowl
- 128 Fenton 6" VASELINE Blackberry Spray square hat
- 129 Fenton 10" VASELINE Fine Rib vase
- 130 VASELINE Crackle spittoon. Always sought after
- 131 Fenton blue Horse Medallion JIP ft'd bowl
- 132 Fenton 6" dark mari Horse Medallion round bowl
- 133 Fenton 7" mari Vintage bowl- Horlacher Adv.
- 134 Fenton 6" purple Peacock Tail deep bowl W/ Horlacher Adv
- 135 Fenton 9" purple Thistle bowl w/ Horlacher Adv. Nice
- 136 Dugan 7" purple Dogwood Sprays 10 ruffled deep bowl. Nice color
- 137 Unknown 13" lite marigold Plume's vase..... Could not find maker or pattern nor could Glen. Looks like a "Jain" style blown mold so I will attribute to Jain.
- 138 Dark mari Grapevine Lattice tankard
- 139 Lite mari Shazam Water pitcher
- 140 Lite mari Shazam tumbler
- 141 West Blue Opal File and Fan compote
- 142 West MMG File and Fan compote
- 143 West Peach opal 6" Hobstar & Fruit berry bowl
- 144 Nwood mari G&C stippled banded dresser tray. Scarce
- 145 Nwood 9" mari Peacocks PCE bowl
- 146 Nwood mari Peacock at Fountain 8pc punch set Very nice color!
- 147 Nwood clambroth Peacock at Fountain punch cup
- 148 Dugan 12" mari Lined Lattice ft'd vase, Scarce
- 149 6" blue vase
- 150 Fenton blue Orange Tree 8pc punch set w/ real nice color
- 151 Imp Iron Cross Jewels 7" cupped vase w/ very nice irid.
- 152 Nwood 8.5" blue Good Luck ruffled bowl
- 153 Nwood 8.5" purple Good Luck ruffled bowl
- 154 Nwood 8.5" mari Good Luck ruffled bowl w/ BW back
- 155 Nwood 8.5" green Greek Key ruffled bowl
- 156 Dugan 8.5" mari Brooklyn Bridge 10 ruffled bowl Nice pressing
- 157 Dugan 9" PO Soutache CRE dome ft'd plate Scarce
- 158 Fenton 8" mari Peacock at Urn deep bowl
- 159 Fenton blue Vintage single lily epergne-small
- 160 Nwood irid nutmeg G&C banded stippled centerpiece bowl. RARE!!
- 161 Nwood mari Acorn Burr 7pc water set.
- 162 Mburg 8.5" green Blackberry Wreath 3-1 edge bowl
- 163 Mburg 8.5" mari Blackberry Wreath ruffled bowl
- 164 Mburg 6" green Cosmos ICS bowl
- 165 Mburg 8.5" rad purple Grape Wreath vari ruffled bowl. SUPER!
- 166 Millersburg 8" mari BIG FISH ruffled bowl. Nice radium piece of carnival glass!
- 167 Nwood 9" Ice Green Rose Show plate. Lots of pastel colors.
- 168 Nwood 10" IG Peacock at Urn Master ice cream bowl. Another pretty pastel.
- 169 Nwood mari G&C shot glass. Scarce
- 170 Nwood mari G&C perfume bottle- Lite irid
- 171 Nwood purple G&C perfume bottle. Scarce
- 172 Nwood purple G&C banded cologne bottle.
- 173 Fenton blue 4 Kittens toothpick. Scarce
- 174 Fenton mari 4 Kittens toothpick. Scarce
- 175 Fenton mari Horse Medallion rosebowl

- 176 Fenton mari Stag & Holly giant rosebowl. Nice dark pumpkin color
- 177 Imp elec purple Diamond Lace 7pc water set. Beautiful set.
- 178 Nwood 9" elec blue Peacocks plate. Beautiful!
- 179 Nwood 9" purple Peacocks plate w/ nice elec color
- 180 Nwood 9" IG Peacocks plate. Leaning to the lime side
- 181 Nwood 9" purple Nippon plate. Scarce
- 182 Mburg 8.5" mari Trout & Fly ICS bowl
- 183 Mburg 8.5" purple Trout & Fly ICS bowl Scarce
- 184 Mburg 6" purple Isaac Benesch & Sons ruffled bowl. Always sought after
- 185 Dugan 10" PO 4 flowers Chop Plate w/ plain back. Nice dark color
- 186 Dugan 10" PO 4 flowers Chop Plate w/ soda gold. Nice dark color. Has base chip
- 187 Dugan 9" PO Apple Blossom Twigs round plate Scarce and real dark!
- 188 8" European bowl with embossed Goldfish marigold carnival glass. Maker Unknown, Thanks Glen!
- 189 Dugan purple Formal hat pin holder
- 190 Dugan purple Formal JIP vase
- 191 Nwood AO Leaf & Beads rosebowl
- 192 Fenton mari. Vintage epergne-small.
- 193 Dugan purple Vintage epergne-large
- 194 Fenton 9" blue Captive Rose plate
- 195 Fenton 9" dark mari. Heart & Vine Spectors Dept. Store plate
- 196 West. 8" blue opal Carolina Dogwood ruffled bowl
- 197 Nwood 9" purple G & C plate w/BW back.
- 198 Nwood purple Wishbone epergne. Small chip on lily hole. See photo
- 199 Fenton 7" blue Atlantic City 1911 Elks plate
- 200 Fenton PASTEL COBALT BLUE Persian Medallion large compote. Only 4 known and this color ONLY KNOWN IN THIS COMPOTE!!! EXTREMELY RARE!!!! BEAUTIFUL! Thanks Larry Sr. for help with color identification.
- 201 Fenton 10" blue Little Flowers 3-1 edge bowl.
- 202 2 Fenton 6.5" Aqua round bowls, Acorn & Grape
- 203 Nwood DARK MARI G&C large fruit bowl, VERY DARK FOR THIS
- 204 Nwood purple G&C handled cracker jar. Good Lookin'
- 205 Nwood 10" mari Peacock at Urn MIC bowl.
- 206 Nwood 9" purple Good Luck PCE bowl w BW back
- 207 Nwood 9" mari Good Luck PCE bowl w BW back
- 208 Nwood 10" Ice Green G&C MIC bowl. Very nice pastel bowl, scarce
- 209 Mburg purple Hobnail Swirl rosebowl
- 210 Nwood elec blue Fruits & Flowers compote
- 211 Nwood ice green Fruits & Flowers compote
- 212 Nwood lime green Drapery candy dish- RARE
- 213 Nwood Ice Blue Drapery candy dish- Scarce
- 214 Nwood AQUA Drapery candy dish- Scarce
- 215 Nwood purple Drapery candy dish
- 216 Nwood mari Drapery candy dish
- 217 Nwood purple G&C cologne bottle
- 218 Nwood marigold G&C carnival cologne bottle
- 219 Nwood purple G&C banded oval dresser tray RARE
- 220 Nwood mari G&C banded oval dresser tray RARE
- 221 Nwood 8.5" mari Embroidered Mums ruffled bowl
- 222 Nwood 8.5" GREEN Star of David & Bows ruffled bowl Very scarce
- 223 Nwood 7" mari Star of David & Bows deep bowl
- 224 Fenton IB 5.5" OE hat , Nice dark color
- 225 Mburg 10" mari Nesting Swans ruffled bowl
- 226 Cambridge green Inverted Strawberry candle stick RARE. Has a couple flakes as usual
- 227 Dugan 9" purple Cherries ruffled bowl. Scarce
- 228 Nwood DARK mari Dandelion 7pc water set. Just take a look how this looks!
- 229 Dugan 9" purple Lined Lattice vase
- 230 Fenton 10" green Rustic vase, NICE
- 231 Imp 11" amber Ripple vase.
- 232 2 Fenton GREEN Holly compotes, flared & cupped
- 233 Nwood mari G&C hatpin holder.
- 234 Nwood mari Butterfly nappy, Pretty
- 235 Nwood 8" mari G&C HG plate
- 236 Mburg 8" green Peacock at Urn 3-1 edge bowl Bee w/ beads.
- 237 Fenton 8.5" blue Peacock at Urn 6 ruffled bowl
- 238 Fenton 8.5" blue Peacock at Urn 8 ruffled bowl
- 239 Nwood 8.5" purple Peacocks ruffled bowl.
- 240 Nwood 6" purple Peacock at Urn TCS bowl flared
- 241 Nwood 5.5" purple Peacock at Urn ICS bowl
- 242 3 Nwood 6" mari Peacock at Urn ICS bowls 1 money
- 243 Fenton 6" green Waterlily fl'd sauce.. VERY nice color
- 244 Nwood 14" mari Tree Trunk mid size vase
- 245 Nwood 9" Aqua OPal Tree Trunk Vase. VERY NICE
- 246 Nwood 6.5" elec blue tree trunk vase. HOT!
- 247 Nwood white Grape & Cable cup and saucer RARE
- 248 Ice Green Frog candy container
- 249 Nwood Green Dandelion mug. Rare color
- 250 RARE Nwood 8.5" IB Grape & Cable PCE bowl Super color!
- 251 Nwood pastel mari Dandelion mug. Nice color
- 252 Nwood Lavender Dandelion mug, Scarce
- 253 Nwood AO Dandelion mug. Scarce
- 254 Nwood lavender Dandelion mug, Nice strong color
- 255 Nwood green Grape & Cable hatpin holder Nice irid!!
- 256 OUTSTANDING Frosty White Peacock at Fountain water pitcher. RARE AND VERY PRETTY!
- 257 Imp SMOKE Zipper Loop lamp, small size
- 258 Imp mari Zipper Loop mid size lamp. Scarce
- 259 Nwood elec blue Butterfly bon bon w/ threaded back RARE & BEAUTIFUL!
- 260 Nwood purple Corn vase w/ nice hi-lights



**Jim Wroda Auctions**  
5239 ST RT 49 South  
Greenville, Ohio 45331  
937.548.7835 or 937.459.9556  
www.jimwrodaauctions.com

PRESORTED  
FIRST CLASS MAIL  
U.S. POSTAGE  
**PAID**  
CELINA, OH  
PERMIT NO. 99



**FIRST CLASS MAIL**



14-17\*\*\*\*\*AUTO\*\*MIXED AADC 430  
LEE MARKLEY  
PO BOX 306  
502 N BROADWAY ST  
MENTONE IN 46539-9531



The Historical Griffenstein House, Wichita, KS.  
Visit [www.wichitahistory](http://www.wichitahistory) for more Historical Information