

# BURNS

AUCTION SERVICE

## CARNIVAL GLASS AUCTION

FRIDAY & SATURDAY,  
JULY 31 & AUGUST 1

PREVIEW: FRIDAY AT 3:00 P.M.

**AUCTION: 6:00 P.M. (LOTS #1-#235)**

PREVIEW: SATURDAY AT 7:30 A.M.

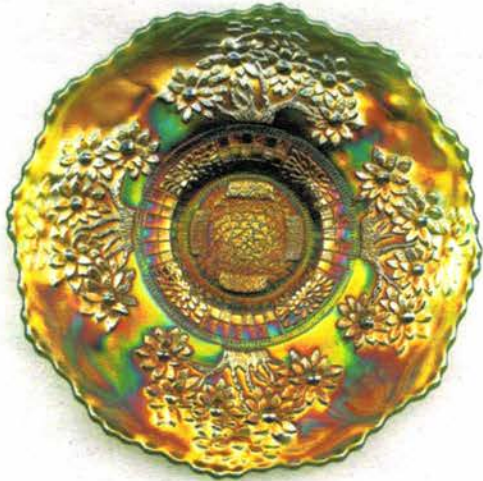
**AUCTION: 9:00 A.M. (LOTS #236 TO END)**

at the

**RAMADA PLAZA HOTEL  
1718 UNDERPASS WAY  
HAGERSTOWN, MD 21740  
(301) 797-2500**

The hotel is located at 1718 Underpass Way,  
Exit 5A on I-81

**For more information or to leave mail bids,  
call Tom Burns at 407-592-6552**



LOT # 475



LOT # 400



LOT # 20



LOT # 150



LOT # 40

Selling 4 partials at this auction...2 collections from New Hampshire, 1 from New York and another from Pennsylvania making for an auction of 500 lots. Almost half will be sold Friday night with the remainder of the glass sold by early afternoon on Saturday so we can get you guys on the road.

The Ramada Hotel, located on 1718 Underpass Way (exit 5A on I-81) will host the event. You can call the hotel direct at 301-797-2500 for reservations.

The auction will be on Auction Flex, as well as Auction Zip ID#29661. All auction flex bids are due by 11:59 p.m. on Thursday, July 30th.

**NOTE:** Absentee bidders...if you are successful, I will mail the item and then call you with your total cost owed. All mailings will carry a minimum \$5 handling charge towards packing supplies, etc. All dealers, please bring valid tax information. All photos and listings can be viewed at [www.necga.com](http://www.necga.com). Click on Carnival glass links page and look for Burns Auction. For further information, contact Tom Burns, 183 Sunnyside Drive, Clermont, FL 34711. Tel. (407) 592-6552. Thanks.

- |         |   |         |  |
|---------|---|---------|--|
| ___ 1.  | N Springtime Handled Creamer – Purp. (scarce; nice color)   | ___ 22. | 8 ¾" N G & C Variant 8 Ruffled Bowl with Basketweave Ext. – Green (nice color)   |
| ___ 2.  | N Springtime Tumbler – Mari. (scarce; average)  | ___ 23. | 9 1/8" N G & C Plate with Basketweave Ext. – Amyth. (satiny finish)  |
| ___ 3.  | (2) N Springtime ind. Round Berry Bowls – Purp. (selling pair for one money)  | ___ 24. | 8 7/8" N G & C Variant low 8 Ruffled Bowl with Plain Ext. – Amyth. (nice color)  |
| ___ 4.  | N Acorn Burr Handled Punch Cup – Green (really nice color)  | ___ 25. | <b>N G &amp; C TANKARD 7 PC. WATER SET – PURP. (RARE AND VERY DESIRABLE; REALLY NICE COLOR AND IRID.)</b>                      |
| ___ 5.  | <b>N ACORN BURR 7 PC. WATER SET – PURP. (VERY SCARCE &amp; DESIRABLE; NICE COLOR)</b>   | ___ 26. | N G & C Tankard Tumbler – Purp. (scarce; really nice irid.)  |
| ___ 6.  | (2) N Acorn Burr Tumblers – Purp. (both have blue highlights; selling 2 for 1)  | ___ 27. | N G & C 7 pc. Water Set – Purp. (nice color and irid.)   |
| ___ 7.  | (2) N Acorn Burr Tumblers – Amyth. (both have nice irid.; selling 2 for 1)  | ___ 28. | 8 ¾" N G & C Variant 8 Ruffled Bowl with Basketweave Ext. – Purp. (really nice irid.)  |
| ___ 8.  | N Acorn Burr Tumbler – Lt. Amyth. (odd tint; unusual base color)  | ___ 29. | N G & C Handled Punch Cup – Amyth. (nice irid.)  |
| ___ 9.  | N Acorn Burr 5 pc. Berry Set – Purp. (nice; well matched)   | ___ 30. | <b>N G &amp; C COVERED CRACKER JAR – AMYTH. (VERY SCARCE WITH REALLY NICE IRID.)</b>   |
| ___ 10. | N Acorn Burr 5 pc. Berry Set – Mari. (nice color)   | ___ 31. | N G & C Variant Handled Punch Cup – Lt. Amyth. (odd variation; great irid.)  |
| ___ 11. | N Daisy and Plume 3 ftd. Ruffled Rose Bowl with Stippled Rays Int. – Green (chip on toe)                                      | ___ 32. | N G & C Covered Powder Jar – Purp. (scarce; nice color)  |
| ___ 12. | N Beaded Cable ftd. Ruffled Rose Bowl with Stippled Rays Int. – Amyth.  | ___ 33. | N G & C Covered Cracker Jar – Purp. (scarce; average color)  |
| ___ 13. | N Beaded Cable ftd. Ruffled Rose Bowl – Purp.   | ___ 34. | 11" Tall N Thin Rib Standard Swung Vase – Odd Amyth. (odd tint; really nice irid.)   |
| ___ 14. | <b>N BEADED CABLE FTD. RUFFLED ROSE BOWL – AQUA OPAL. (REALLY NICE PASTEL EXAMPLE; VERY NICE)</b>                             | ___ 35. | <b>N PEACOCK AT THE URN LG. ICE CREAM BOWL – ICE BLUE (EXCELLENT EXAMPLE; PERFECT WITH GREAT IRID.)</b>                        |
| ___ 15. | <b>N BEADED CABLE 3 FTD 6 RUFFLED CANDY DISH WITH RAYED INT. – EMERALD GREEN (SUPER COLOR AND SUPER IRID.; GREAT EXAMPLE)</b> | ___ 36. | <b>N PEACOCK AT THE URN 7 PC. ICE CREAM SET – AMYTH. (COMPLETE AND PERFECT; NICE AVERAGE COLOR AND IRID.)</b>                  |
| ___ 16. | N Raspberry ftd. Handled Gravy Boat – Purp. (scarce; pretty good feet)  | ___ 37. | 5 ¾" N Peacock at the Urn ind. I.C. Bowl – Amyth. (nice color and irid.)   |
| ___ 17. | N Eight Sided Bushel Basket – Dk. Mari. (nice dark color)   | ___ 38. | <b>N PEACOCK AT THE FOUNTAIN MASTER BERRY BOWL – WHITE (REALLY NICE IRID. WITH SOME GOLD TRIM)</b>                             |
| ___ 18. | 8 ¼" N Star of David and Bows domed 8 Ruffled Bowl – Purp. (nice example)   | ___ 39. | N Peacock at the Fountain Master Berry Bowl – Amyth. (nice color and irid.; some wear on interior)                             |
| ___ 19. | N G & C Handled Punch Cup – Green / Mari.   | ___ 40. | <b>N PEACOCK AT THE FOUNTAIN 8 PC. RUFFLED PUNCH SET – PURP. (RARE; DESIRABLE; NICE BOWL AND BASE; CUPS ARE BELOW AVERAGE)</b> |
| ___ 20. | <b>N G &amp; C 14 PC. RUFFLED BANQUET PUNCH SET – PURP. (RARE AND ALWAYS DESIRABLE; GREAT COLOR AND WELL MATCHED)</b>         | ___ 41. | N Peacock at the Fountain Handled Punch Cup – Blue (nice color; scarce)  |
| ___ 21. | 9 ¼" N G & C Variant Plate with Basketweave Ext. – Green (nice example; scarce)   |         |  |

- \_\_\_ 42. **N PEACOCK AT THE FOUNTAIN 7 PC. WATER SET – BLUE (VERY DESIRABLE SET; TUMBLERS ARE WELL MATCHED)** \_\_\_ 65.
- \_\_\_ 43. N Peacock at the Fountain Tumbler – Blue (really nice example) \_\_\_ 66.
- \_\_\_ 44. N Peacocks 8 Ruffled Bowl with Ribbed Ext. – Ice Blue (rare with nice irid.; but has epoxied point) \_\_\_ 67.
- \_\_\_ 45. **N PEACOCKS FLARED PLATE WITH RIBBED EXT. – SODA GOLD AMYTH. (VERY SCARCE BASE COLOR AND IRID.; A NICE EXAMPLE)** \_\_\_ 68.
- \_\_\_ 46. **N PEACOCKS PLATE WITH RIBBED EXT. – AMYTH. (SCARCE WITH NICE COLOR AND IRID.)** \_\_\_ 69.
- \_\_\_ 47. **8 ½" N PEACOCKS 8 RUFFLED BOWL WITH RIBBED EXT. – GREEN (RARE AND VERY DESIRABLE; REALLY NICE SATINY IRID.)** \_\_\_ 70.
- \_\_\_ 48. **8 ¾" N PEACOCKS STIPPLED BOWL WITH NARROW BASE AND RIBBED EXT. – PASTEL MARI. (VERY SCARCE; HAS BRIGHT IRID.)** \_\_\_ 71.
- \_\_\_ 49. N Peacocks Plate with Ribbed Ext. – Lt. Mari. (fair irid.; sorta turns up) \_\_\_ 72.
- \_\_\_ 50. **8 ½" N GOOD LUCK 8 RUFFLED BOWL WITH BASKETWEAVE EXT. – GREEN (VERY DESIRABLE WITH SUPER COLOR AND IRID.)** \_\_\_ 73.
- \_\_\_ 51. 9" N Good Luck 8 Ruffled Bowl with Basketweave Ext. – Mari. (nice dark color and irid.) \_\_\_ 74.
- \_\_\_ 52. 7" N Rosette ftd. 8 Ruffled Nut Bowl – Amyth. (nice satiny finish) \_\_\_ 75.
- \_\_\_ 53. N Petals Stemmed 8 Ruffled Compote – Amyth. (satiny finish) \_\_\_ 76.
- \_\_\_ 54. 7 ½" N Fruit and Flowers 6 Ruffled Bowl with Basketweave Ext. – Purp. (really nice irid.) \_\_\_ 77.
- \_\_\_ 55. **N FRUIT AND FLOWERS STEMMED 2 HANDLED BON BON – ELEC. BLUE (SUPER COLOR AND IRID.)** \_\_\_ 78.
- \_\_\_ 56. N Fruit and Flowers Stemmed 2 Handled Bon Bon – Purp. (nice color) \_\_\_ 79.
- \_\_\_ 57. N Fruit and Flowers Stemmed 2 Handled Bon Bon – Purp. \_\_\_ 80.
- \_\_\_ 58. N Fruit and Flowers Stemmed 2 Handled Bon Bon – Dk. Mari. (nice color) \_\_\_ 81.
- \_\_\_ 59. **8 ¾" N Three Fruits domed 8 Ruffled Bowl with Basketweave Ext. – White (scarce; light irid. on a tough piece)** \_\_\_ 82.
- \_\_\_ 60. **8 ½" N Three Fruits Bowl with P.C.E. and Basketweave Ext. – Purp. (super irid.; nice)** \_\_\_ 83.
- \_\_\_ 61. **8 ¾" N Three Fruits Bowl with P.C.E. and Basketweave Ext. – Purp. (nice color and irid.)** \_\_\_ 84.
- \_\_\_ 62. **8 ¾" N Three Fruits 8 Ruffled Bowl with Plain Ext. – Purp. (nice color)** \_\_\_ 85.
- \_\_\_ 63. **9" N Three Fruits Plate with Basketweave Ext. – Green (scarce with a pretty good look)** \_\_\_ 86.
- \_\_\_ 63A. **9" N Three Fruits Plate with Basketweave Ext. – Amyth. (scarce; nice color)** \_\_\_ 87.
- \_\_\_ 64. **9 ¼" N Three Fruits Plate with Basketweave Ext. – Mari. (nice color)** \_\_\_ 88.
- \_\_\_ 65. **8 7/8" N THREE FRUITS STIPPLED PLATE WITH RIBBED EXT. – PURP. (SCARCE ITEM WITH NICE IRID.)** \_\_\_ 89.
- \_\_\_ 66. 9" N Three Fruits Stippled Plate with Ribbed Ext. – Purp. (sorta average irid.; scarce) \_\_\_ 90.
- \_\_\_ 67. **8 ¾" N Strawberry Bowl with P.C.E. and Basketweave Ext. – Green (satiny finish)**
- \_\_\_ 68. **8 ½" N Strawberry Bowl with Plain Ext. – Mari. (satiny)**
- \_\_\_ 69. **8 ¾" N Strawberry 8 Ruffled Bowl with Basketweave Ext. – Amyth. (satiny)**
- \_\_\_ 70. **8 ¾" N Strawberry 8 Ruffled Bowl with Plain Ext. – Amyth. (nice; could clean up a bit)**
- \_\_\_ 71. **7 ½" N Wild Strawberry Handgrip Plate with Basketweave Ext. – Amyth. (scarce; average irid.)**
- \_\_\_ 72. **6" N Wild Strawberry 6 Ruffled ind. Berry Bowl – Green (nice satiny finish)**
- \_\_\_ 73. N Grape Arbor 6 pc. Tankard Water Set – Mari. (nice color; well matched)
- \_\_\_ 74. **N FINE CUT AND ROSES FTD. 6 RUFFLED CANDY DISH WITH FANCY INT. – GREEN (ACTUALLY QUITE A SCARCE LITTLE ITEM THAT'S TOUGH TO FIND)**
- \_\_\_ 75. **N BUTTERFLY 2 HANDLED BON BON WITH SPIRAL EXT. – PURP. (RARE & DESIRABLE; GREAT COLOR AND IRID.)**
- \_\_\_ 76. N Butterfly 2 Handled Bon Bon with Spiral Ext. – Purp. (small chip on base)
- \_\_\_ 77. **8" N Wishbone deep 8 Ruffled ftd. Bowl with Ruffles and Rings Ext. – Green (sorta Emerald Green; really nice example)**
- \_\_\_ 78. **8" N Wishbone deep 8 Ruffled ftd. Bowl with Ruffles and Rings Ext. – Green (nice satiny finish)**
- \_\_\_ 79. **7 ½" N Wishbone deep 8 Ruffled Ftd. Bowl with Ruffles and Rings Ext. – Amyth. (satiny and nice)**
- \_\_\_ 80. **N SINGING BIRDS 7 PC. WATER SET – PURP. (SCARCE AND DESIRABLE SET; AVERAGE IRID.)**
- \_\_\_ 81. N Singing Birds Handled Mug – Green (nice color)
- \_\_\_ 82. (2) N Singing Birds Tumblers – Green (selling 2 for 1)
- \_\_\_ 83. **N BASKET OF ROSES STIPPLED 2 HANDLED BON BON – PURP. (VERY SCARCE AND DESIRABLE; HAS SOME SILVER)**
- \_\_\_ 84. N Raspberry Tumbler – Amyth.
- \_\_\_ 85. **N RASPBERRY 7 PC. WATER SET – GREEN (NICE TUMBLERS; PITCHER IS AVERAGE)**
- \_\_\_ 86. (4) N Raspberry Tumblers – Green (selling 4 for 1 money)
- \_\_\_ 87. (6) N Raspberry Tumblers – Dk. Mari. (some are super!! So much for the set)
- \_\_\_ 88. Imperial Heavy Grape one handled Nappy – Mari. (scarce)
- \_\_\_ 89. **8 ¼" Imperial Embossed Scroll 8 Ruffled Bowl – Green**
- \_\_\_ 90. **IMPERIAL GRAPE TUMBLER – AMBER LOOKING AMYTH. (SUPER COLOR AND IRID. – LOOKS AMBER)**

___ 91.	12 ½" Tall x 3 3/8" Imperial Ripple Mid-size Swung Vase – Amber (super color and irid.)	___ 115.	<b>9" FENTON PEACOCK AT THE URN 8 RUFFLED BOWL – GREEN (RARE COLOR; NICE COLOR AND IRID.)</b>
___ 92.	Dugan Fisherman's Mug – Purp. (nice example)	___ 116.	<b>8 ¾" FENTON PEACOCK AT THE URN 8 RUFFLED BOWL – AMYTH. (RARE COLOR; NICE SATINY FINISH)</b>
___ 93.	Dugan Leaf Ray Ruffled Handled Nappy – Purp. (nice highlights)	___ 117.	9" Fenton Peacock at the Urn 8 Ruffled Bowl – Blue (scarce; satiny)
___ 94.	Dugan Holly Whirl Ruffled one Handled Gravy Boat – Purp. (nice irid.)	___ 118.	9" Fenton Peacock at the Urn 6 Ruffled Bowl – Blue (really nice irid.)
___ 95.	<b>10 ¼" TALL DUGAN BIG BASKETWEAVE SWUNG VASE – PURP. (ABSOLUTELY SUPER EXAMPLE WITH SUPER COLOR AND IRID.)</b>	___ 119.	8" Fenton Peacock at the Urn 6 Ruffled Bowl – Blue (nice color)
___ 96.	<b>(1) 5" TALL X 5 ½" TOP DIAM. AND (1) 5" TALL X 6" TOP DIAM. DUGAN LINED LATTICE SQUATTY FLARED VASES – PURP. (SUPER PAIR; SELLING SO MUCH EACH FOR THE PAIR)</b>	___ 120.	9" Fenton Peacock at the Urn 6 Ruffled Bowl – Blue (nice color)
___ 97.	8 ¼" Dugan Paneled Cherries ftd. 10 Ruffled Bowl – Amyth. (nice irid.; scarce)	___ 121.	9" Fenton Peacock at the Urn 8 Ruffled Bowl – Dk. Mari. (nice color and irid.)
___ 98.	7 5/8" Dugan Paneled Cherries ftd. Bowl with 3 in 1 Edge – Amyth. (sorta silvery but looks nice with the 3 in 1 edge)	___ 122.	8" Fenton Peacock at the Urn Ice Cream Shaped Bowl – Dk. Mari. (nice color and irid.)
___ 99.	7" Tall Dugan Paneled J.I.P. Vase – P. Opal. (nice color and irid.; manuf. flaw on lip)	___ 123.	9" Fenton Peacock at the Urn 8 Ruffled Bowl – Mari. Fenton Peacock at the Urn Stemmed 6 Ruffled Compote – White (great irid.)
___ 100.	<b>8 ¾" DUGAN BROOKLYN BRIDGE 6 RUFFLED BOWL – LT. MARI. (RARE AND DESIRABLE; SORTA AVERAGE)</b>	___ 124.	<b>FENTON FLOWERS FTD. ROSE BOWL – RED (RARE AND VERY DESIRABLE; TIPS OF TOES ARE ROUGH BUT IT LOOKS RED ... NICE)</b>
___ 101.	<b>DUGAN (OR N?) G &amp; C FTD. BANANA BOAT – GREEN (VERY SCARCE WITH NICE COLOR AND IRID.)</b>	___ 125.	Fenton Flowers ftd. Rose Bowl – Green (very scarce; nice color and irid.)
___ 102.	10 ½" M'burg Blackberry Wreath Lg. 6 Ruffled Bowl – Green (satiny and nice)	___ 126.	<b>9 ½" FENTON ORANGE TREE PLATE – BLUE (VERY SCARCE; NICE COLOR AND IRID.)</b>
___ 103.	10" M'burg Hanging Cherries Lg. Ice Cream Bowl – Green (scarce with a nice satiny finish)	___ 127.	Fenton Orange Tree ftd. Ruffled Fruit Bowl – Blue (scarce item)
___ 104.	10 ¼" M'burg Hanging Cherries Lg. Ice Cream Bowl – Green (scarce with a satiny finish; some wear)	___ 128.	Fenton Butterfly and Fern Tumbler with Manuf. Ground Base – Amyth. (satiny finish)
___ 105.	<b>8 ¾" M'BURG TROUT AND FLY 6 RUFFLED BOWL – GREEN (VERY SCARCE AND VERY DESIRABLE; SATINY AND NICE)</b>	___ 129.	<b>FENTON THISTLE FTD. OVAL BANANA BOAT – GREEN (HAS TO BE ONE OF THE BETTER EXAMPLES I'VE SEEN; SUPER IRID.)</b>
___ 106.	5 ½" M'burg Peacock ind. Flared Berry Bowl – Amyth. (radium and very desirable)	___ 130.	Fenton Butterfly and Berry ftd. Ruffled Master Berry Bowl- Amyth. (scarce color)
___ 107.	11 ½" M'burg (?) Thin Rib Swung Vase with Rayed Base – Green (people say this is Millersburg... radium)	___ 131.	8 ¾" Fenton Fantail / Butterfly and Berry ftd. Round Berry Bowl – Blue
___ 108.	(7) Dugan Stork in the Rushes with Beaded Top Tumblers – Blue (selling set for one money)	___ 132.	Fenton Butterfly and Berry Covered Sugar Bowl and Spooner – Mari.
___ 109.	Fenton Butterfly and Fern 6 pc. Water Set – Blue (pitcher has hairline by handle)	___ 133.	Fenton Butterfly and Berry ftd. Creamer – Blue (satiny; scarce)
___ 110.	<b>9 ½" FENTON PEACOCK AT THE URN PLATE – BLUE (RARE AND DESIRABLE; EXCELLENT COLOR AND IRID.)</b>	___ 134.	<b>9 ¾" FENTON HOLLY FLAT PLATE – WHITE (VERY SCARCE; SUPER IRID.)</b>
___ 111.	9 ½" Fenton Peacock at the Urn Plate – Blue (very scarce; nice color and irid.)	___ 135.	9" Fenton Holly 8 Ruffled Bowl – Pop Bottle Aqua / Mari. (satiny; odd base color)
___ 112.	9 ½" Fenton Peacock at the Urn Plate – Blue (scarce with nice color)	___ 136.	9 ½" Fenton Holly Bowl with 3 in1 Edge – Blue (nice color)
___ 113.	8" Fenton Peacock at the Urn Ice Cream Shaped Bowl – Blue (scarce; nice color and irid.)	___ 137.	8 ½" Fenton Holly Ice Cream Shaped Bowl – Blue
___ 114.	8 ¼" Fenton Peacock at the Urn Ice Cream Shaped Bowl – Blue (scarce; nice color and irid.)	___ 138.	8 ½" Fenton Holly Ice Cream Shaped Bowl – Blue
		___ 139.	8 ½" Fenton Holly Ice Cream Shaped Bowl – Blue
		___ 140.	8" Fenton Dragon and Lotus spatula ftd. Ice Cream Shaped Bowl – green (scarce; really nice irid.)
		___ 141.	7 ½" Fenton Dragon and Lotus spatula ftd. 8 Ruffled Bowl – Green (scarce; nice)
		___ 142.	

___ 143.	8" Fenton Dragon and Lotus spatula ftd. 8 Ruffled Bowl – Blue (scarce; nice)	___ 170.	<b>FENTON BLACKBERRY SPRAY 6 RUFFLED HAT – RED (NICE BASE COLOR; SORTA GOLDISH)</b>
___ 144.	8 ¾" Fenton Dragon and Lotus 8 Ruffled Bowl – Dk. Mari. (nice color)	___ 171.	7 ¾" Fenton Two Flowers 8 Ruffled Spatula ftd. Bowl – Green (very scarce base color; nice)
___ 145.	8 ¼" Fenton Dragon and Lotus Ice Cream Shaped Bowl – Blue (nice satiny finish)	___ 172.	7 ½" Fenton Two Flowers Flared Spatula ftd. Bowl – Blue (nice color)
___ 146.	<b>7 ½" FENTON PEACOCK AND GRAPE DEEP ROUND NUT BOWL – MARI. (VERY SCARCE SHAPE; NICE COLOR)</b>	___ 173.	Dugan S Repeat Punch Base – Purp. (damaged; glued together)
___ 147.	9" Fenton Peacock and Grape 8 Ruffled Bowl – Blue (really nice irid.)	___ 174.	(2) Dugan Vintage Powder Jar bases only – Purp. (both damaged)
___ 148.	8 ¾" Fenton Peacock and Grape 8 Ruffled Bowl – Blue (satiny)	___ 175.	<b>8 ¾" DUGAN FANCIFUL FLARED PLATE – AMYTH. (PINHEAD ON ONE POINT)</b>
___ 149.	8" Fenton Peacock and Grape 8 Ruffled Bowl – Green (satiny)	___ 176.	8 3/8" Dugan Round Up I.C. Shaped Bowl – Amyth. (scarce; nice color and irid.)
___ 150.	<b>9 ¾" FENTON HEARTS AND VINE "COMPLIMENTS OF SPECTOR'S DEPARTMENT STORE" FLAT PLATE – DK. MARI. (RARE AND VERY DESIRABLE; ABOUT AS GOOD AN EXAMPLE AS I'VE SEEN)</b>	___ 177.	<b>9 ¼" DUGAN DOGWOOD SPRAYS DOMED TRI-CORNERED CRIMPED EDGE BOWL – PURP. (SUPER, SUPER EXAMPLE; SMALL EPOXY SPOT ON BASE)</b>
___ 151.	9 ¼" Fenton G & C spatula ftd. Flat Plate – Mari. (average irid.)	___ 178.	6 ½" Dugan Bellflower Tri-Cornered Bowl – Purp. (super irid.)
___ 152.	9 ½" Fenton Three Fruits 12 sided Flat Plate – Amyth. (satiny; nice)	___ 179.	9 ¼" Dugan Flowers and Frames domed 10 Ruffled Bowl – Purp. (nice irid.)
___ 153.	Fenton Kittens 4 sided Bowl – Mari. (scarce)	___ 180.	<b>9" DUGAN APPLE BLOSSOM TWIGS BOWL WITH 3 IN 1 EDGE AND BASKETWEAVE EXT. – PURP. (SUPER EXAMPLE; GREAT IRID. AND SHAPE – NICE!)</b>
___ 154.	5 ½" Fenton Sailboats I.C. Shaped Bowl – Blue (scarce shape)	___ 181.	<b>DUGAN BEADED BASKET 2 HANDLED NOVELTY – PURP. (SUPER EXAMPLE)</b>
___ 155.	<b>5 ¾" TALL FENTON STRETCH DOUBLE DOLPHIN FTD. FAN VASE – TANGERINE (VERY SCARCE AND DESIRABLE)</b>	___ 182.	Dugan Grape Delight 6 ftd. Nut Bowl – Purp. (super example)
___ 156.	5 ½" Fenton Blackberry 2 Row Open Edge Hat – Amyth. (scarce)	___ 183.	Dugan Thumbprint Stemmed 8 Ruffled Compote – Purp. (really nice irid.)
___ 157.	Fenton Cherry Circles Round 2 Handled Bon Bon – Blue (nice color and irid.)	___ 184.	Dugan Beauty J.I.P. Crimped Edge Vase – Purp. (rare but has large chip on back)
___ 158.	7 ½" Fenton Captive Rose Round Bowl with T.C.E. – Amyth.	___ 185.	<b>6 ¼" DUGAN WISHBONE AND SPADES FLAT PLATE WITH PLAIN EXT. – PURP. (NICE COLOR AND IRID.)</b>
___ 159.	8" Fenton Autumn Acorns Round Bowl with T.C.E. – Amyth.	___ 186.	7" Dugan Flowers and Beads Ext. Flat Plate – Purp. (scarce)
___ 160.	<b>6 ½" FENTON HORSEHEAD MEDALLION 3 FTD. FLARED NUT BOWL – BLUE (SCARCE; NICE)</b>	___ 187.	7 ¼" Dugan Fishscales Plate with T.C.E. – Purp. (scarce)
___ 161.	6 ½" Fenton Horsehead Medallion 3 ftd. Flared Nut Bowl – Mari.	___ 188.	6 ¼" Dugan Rayed Int. / Jeweled Heart Ext. Plate with Crimped Edge – Purp. (sorta spotty irid.)
___ 162.	7" Fenton Lions 6 Ruffled Bowl – Custard / Pink Stain (scarce item)	___ 189.	6" Dugan Cherries Round Crimped Edge Sauce – Amyth. (nice irid.)
___ 163.	8 ½" Fenton Hearts and Vine Bowl with 3 in 1 Edge – Amyth.	___ 190.	<b>DUGAN FISHNET SINGLE LILY EPERGNE WITH 3 IN 1 EDGE – AMYTH. (VERY SCARCE; NICE SATINY FINISH)</b>
___ 164.	Fenton Illusion 4 sided 2 Handled Bon Bon – Blue (nice example)	___ 191.	7 ½" Dugan Six Petals 6 Ruffled Crimped Edge Bowl – Purp. (super irid.)
___ 165.	Fenton Stippled Rays 6 pc. Flared Berry Set – Blue (tough set to find; well matched)	___ 192.	7" Dugan Bellflower 6 Ruffled Crimped Edge Bowl – Purp. (super irid.)
___ 166.	8 ¾" Fenton Vintage Grape Bowl with 3 in 1 Edge – Green	___ 193.	7 ½" Dugan Holly Whirl low 10 Ruffled Bowl – Purp. (super irid.)
___ 167.	7" Fenton Lotus and Thistle 6 Ruffled Bowl – Mari. (very scarce pattern)	___ 194.	Dugan Holly Whirl Tri-Cornered Handled Sauce – Purp. (nice irid.)
___ 168.	6" Fenton Little Fishes ftd. 6 Ruffled Sauce – Mari. (scarce; nice)		
___ 169.	5 ½" Fenton Vintage Grape I.C. Shaped Sauce – Amyth.		

- \_\_\_ 195. **6 1/2" DUGAN STARFISH 6 RUFFLED CRIMPED EDGE COMPOTE – PURP. (SCARCE SHAPE WITH NICE IRID.)**
- \_\_\_ 196. 6 3/4" Dugan Starfish Stemmed Flared Crimped Edge Compote – Purp. (rare but has damage on edge)
- \_\_\_ 197. Dugan Heavy Iris Tumbler – Purp. (pinhead)
- \_\_\_ 198. Dugan Grapevine Lattice Tumbler – Purp. (rough base)
- \_\_\_ 199. Dugan Vineyard Tumbler – Purp. (nice irid.)
- \_\_\_ 200. **7 1/4" DUGAN 5 HEARTS DOMED FLARED FLAT BOWL – AMYTH. (VERY SCARCE; SATINY; NICE)**
- \_\_\_ 201. **7 1/4" DUGAN 5 HEARTS DOMED FLARED FLAT BOWL – MARI. (VERY SCARCE; SATINY; NICE)**
- \_\_\_ 202. Dugan Leaf Rays Ruffled Handled Nappy – Purp. (nice irid.)
- \_\_\_ 203. 6 3/4" Dugan Bellflower 6 Ruffled Bowl – Purp. (nice irid.)
- \_\_\_ 204. 9" x 6 3/4" Dugan Paneled Cherries 10 Ruffled 2 sided ftd. Banana Dish – Purp. (scarce shape; nice irid.; 2 pinhead flakes on feet)
- \_\_\_ 205. 11" Dugan Smooth Rays Int. / Jeweled Heart Ext. Lg. 8 Ruffled Bowl – Purp. (nice large piece; nice irid.)
- \_\_\_ 206. 5 3/4" Dugan Cherries 6 Ruffled Sauce with Jeweled Heart Ext. – Purp. (nice irid.)
- \_\_\_ 207. 6" Dugan Ski Star 8 Ruffled Sauce with Compass Ext. – Purp. (nice irid.)
- \_\_\_ 208. 6" Dugan Petal and Fan Round Sauce with T.C.E. and Jeweled Heart Ext. – Amyth. (nice irid.)
- \_\_\_ 209. 5 3/4" Dugan Wishbone and Spades 6 Ruffled Sauce with Basketweave Ext. – Purp. (scarce; nice)
- \_\_\_ 210. **DUGAN DAISY WEB 6 RUFFLED HAT WITH BEADED OVAL AND SAND EXT. – PURP. (RARE; DESIRABLE; MAY HAVE A PINHEAD)**
- \_\_\_ 211. Dugan Circle Scroll Tri-Cornered Hat – Purp. (very scarce with nice irid.)
- \_\_\_ 212. **7 1/2" DUGAN CIRCLE SCROLL SWUNG VASE – PURP. (VERY SCARCE AND DESIRABLE; NICE IRID.)**
- \_\_\_ 213. 6 1/2" Dugan Lattice and Hearts Deep Round Bowl – Purp. (rare pattern; very spotty on inside)
- \_\_\_ 214. 4 3/4" Dugan Petal and Fan Deep Round Sauce with Jeweled Heart Ext. – Sorta Horehound (odd base color; pretty neat)
- \_\_\_ 215. **DUGAN GRAPE AND CABLE PERFUME BOTTLE AND STOPPER – PURP. (RARE AND DESIRABLE; NICE COLOR AND IRID.)**
- \_\_\_ 216. Dugan Nautilus 2 Handled Open Sugar – Purp. (scarce; nice irid.)
- \_\_\_ 217. 4 3/4" Dugan Circle Scroll ind. Round Berry Bowl – Purp. (scarce item)
- \_\_\_ 218. Dugan Dahlia Handled Creamer – Purp. (satiny finish)
- \_\_\_ 219. Dugan Windflower Tri-Cornered Handled Nappy – Amyth. (scarce)
- \_\_\_ 220. **7 1/4" DUGAN QUESTION MARK DOMED PLATE WITH GEORGIA PEACH AND PUZZLE EXT. – WHITE (RARE WITH GREAT COLOR AND IRID.)**
- \_\_\_ 221. 5 3/4" Dugan Question Mark Stemmed Round Compote with Georgia Peach and Puzzle Ext. – Purp. (scarce shape)
- \_\_\_ 222. Dugan Cherry Wreath Tumbler – Purp. (nice example)
- \_\_\_ 223. Dugan Stork in the Rushes Handled Mug – Amyth. (scarce; nice irid.)
- \_\_\_ 224. (2) Dugan Fisherman's Handled Mugs – Purp. (selling so much each for pair)
- \_\_\_ 225. **DUGAN HERON HANDLED MUG – PURP. (RARE; TOUGH TO FIND WITH EXCELLENT COLOR AND IRID.)**
- \_\_\_ 226. 8 1/2" Tall Dugan Lattice & Points Swung Vase – Purp. (really nice irid.)
- \_\_\_ 227. 9 1/2" Tall Dugan Lined Lattice Swung Vase – Purp. (odd satiny finish)
- \_\_\_ 228. 10 3/4" Tall Dugan Pulled Loop Swung Vase – Amyth. (scarce; satiny)
- \_\_\_ 229. (1) 10 3/4" Tall Dugan Target Swung Vase – Blue and (1) Dugan Big Basketweave Swung Vase – Blue (scarce; has flake on base of Basketweave)
- \_\_\_ 230. 5 1/8" Dugan Wishbone and Spades Round ind. Ice Cream Bowl – Purp. (scarce; nice color)
- \_\_\_ 231. 5 1/2" Dugan Fishscale Deep Round Crimped Edge Bowl – Amyth. (nice irid.)
- \_\_\_ 232. Dugan Wreath of Roses Rose Bowl – Amyth. (satiny)
- \_\_\_ 233. Dugan Grape Delight 6 ftd. Round Rose Bowl – Purp. (nice color)
- \_\_\_ 234. Dugan Jeweled Heart Tumbler – Dk. Mari. (nice color; scarce)
- \_\_\_ 235. 6 3/4" Dugan Persian Garden Plate with Pool and Pearls Ext. – White (scarce; nice irid.)
- \_\_\_ 236. 8" Tall Dugan Twigs Swung Vase – Amyth.
- \_\_\_ 237. (1) 10 1/2" Tall Dugan Target Swung Vase and (1) 9 1/4" Tall Dugan Spiralex Swung Vase – Mari. (selling 2 for 1)
- \_\_\_ 238. 7" Tall Dugan Paneled 6 sided Vase – Purp. and (1) 10 3/4" Tall Dugan Pulled Loop Swung Vase – Amyth. (selling 2 for 1; damage on base of Pulled Loop)
- \_\_\_ 239. 3 pc. Lot: Dugan Beaded Shell Mug – Purp.; Maple Leaf Tumbler – Amyth. and Stork in the Rushes Tumbler – Blue (selling as a set; Stork is "as is")
- \_\_\_ 240. Dugan Mary Ann Vase and Lattice and Points 8 Ruffled Hat – Mari. (selling 2 for 1)

## START of the SECOND SESSION

- 8" Tall Dugan Twigs Swung Vase – Amyth.
- (1) 10 1/2" Tall Dugan Target Swung Vase and (1) 9 1/4" Tall Dugan Spiralex Swung Vase – Mari. (selling 2 for 1)
- 7" Tall Dugan Paneled 6 sided Vase – Purp. and (1) 10 3/4" Tall Dugan Pulled Loop Swung Vase – Amyth. (selling 2 for 1; damage on base of Pulled Loop)
- 3 pc. Lot: Dugan Beaded Shell Mug – Purp.; Maple Leaf Tumbler – Amyth. and Stork in the Rushes Tumbler – Blue (selling as a set; Stork is "as is")
- Dugan Mary Ann Vase and Lattice and Points 8 Ruffled Hat – Mari. (selling 2 for 1)

- \_\_\_241. 3 pc. Lot: (1) Grape Delight Nut Bowl – Purp.; (1) Dahlia Sauce – Purp. and (1) S Repeat Berry Bowl – Lt. Amyth. Crystal (selling 3 for 1)
- \_\_\_242. 8" Tall Westmoreland Wide Panel Swung Vase – Amyth. (nice example)
- \_\_\_243. 8 ½" Tall Westmoreland Wide Panel Swung Vase – Mari. (nice example)
- \_\_\_244. Imperial Grape Wine Decanter with no Stopper – Purp. (super irid.)
- \_\_\_245. **IMPERIAL CORN BOTTLE – SMOKE (RARE; VERY DESIRABLE WITH GREAT IRID.)**
- \_\_\_246. **IMPERIAL "WHIRLING STAR" LIGHT SHADE – SMOKE (VERY RARE ITEM IN A RARE COLOR; REALLY SUPER)**
- \_\_\_247. (2) Imperial Grape Tumblers – (1) Mari.; (1) Purp. (selling 2 for 1; purple example cracked)
- \_\_\_248. Imperial 474 Handled Milk Pitcher – Lt. Amyth. / Mari. (odd sun colored Amyth; too bad...cracked!)
- \_\_\_249. Imperial Rococco domed Ruffled Vase – Mari. / Clear
- \_\_\_250. **9 ¼" IMPERIAL COBBLESTONE 8 RUFFLED BOWL – AMYTH. (SUPER EXAMPLE; GREAT IRID.)**
- \_\_\_251. **8" IMPERIAL ACANTHUS DEEP ROUND BOWL – PURP. (SUPER EXAMPLE)**
- \_\_\_252. 10" Imperial Acanthus Flat Plate – Mari. (nice color and irid.)
- \_\_\_253. (2) 7 ½" Imperial Optic and Buttons Flat Plates – Pastel Mari. (selling 2 for 1)
- \_\_\_254. 6 ¼" Imperial File and Fan Flat Underplate – Dk. Mari. (nice dark color)
- \_\_\_255. Imperial Grape 12 pc. Round Punch Set – Mari. (complete and perfect)
- \_\_\_256. 6 ¾" Tall Newer Fenton Persian Medallion 6 Ruffled Crimped Edge Compote – Irid. Amber with Blue Tips (very attractive)
- \_\_\_257. 7 ½" Tall Newer Fenton Diamond Rib Handled Basket – Red (bright color and irid.)
- \_\_\_258. **9 ¾" TALL NEWER FENTON DAFFODIL LG. PILLOW VASE WITH MANUF. GROUND TOP – DARK (NICE LARGE IRIDIZED ITEM)**
- \_\_\_259. **12" TALL NEWER FENTON PARROT LG. CYLINDER VASE – GREEN (VERY IMPRESSIVE; LARGE PIECE OF GLASS)**
- \_\_\_260. Dugan Pastel Swan – Amyth. (scarce; small chip on inside)
- \_\_\_261. (2) Pastel Swans – (1) Ice Green; (1) Lime Ice Green (selling 2 for 1)
- \_\_\_262. (2) Pastel Swans – Pink (selling 2 for 1)
- \_\_\_263. (2) Pastel Swans – Celeste Blue (selling 2 for 1)
- \_\_\_264. (2) Pastel Swans (newer??) – (1) Crystal; (1) Crystal Amyth. (selling 2 for 1)
- \_\_\_265. Pastel Swan – Powder Blue Opal.
- \_\_\_266. I.G. Pastel Swan – Green Slag
- \_\_\_267. (2) I.G. Pastel Swans (carnival) – (1) Blue; (1) Red (selling 2 for 1)
- \_\_\_268. Fenton Vintage Small size Epergne Lily – Amyth.
- \_\_\_269. Fenton Paneled Dandelion Tankard Water Pitcher – Green (epoxied hole on base corner)
- \_\_\_270. **FENTON 2 ROW OPEN EDGE BASKETWEAVE 2 SIDED HAT – REVERSE AMBERINA OPAL. (RARE AND VERY DESIRABLE; TOUGH TO FIND AND REALLY NICE)**
- \_\_\_271. Fenton 2 Row Open Edge Basketweave 2 sided Hat – Dk. Mari. / Vaseline (nice dark example)
- \_\_\_272. Fenton 2 Row Open Edge Basketweave 2 sided Hat – Red (damaged on edge)
- \_\_\_273. Fenton 2 Row Open Edge Basketweave 6 Ruffled Hat – Amyth. (scarce color)
- \_\_\_274. Fenton 2 Row Open Edge Basketweave 6 Ruffled Hat – Lt. Amyth. (scarce color)
- \_\_\_275. **FENTON 2 ROW OPEN EDGE BASKETWEAVE 6 RUFFLED HAT – RED (DESIRABLE; NICE COLOR)**
- \_\_\_276. Fenton 2 Row Open Edge Basketweave 6 Ruffled Hat – Powder Blue (scarce)
- \_\_\_277. Fenton 2 Row Open Edge Basketweave 6 Ruffled Hat – Aqua (nice item)
- \_\_\_278. **FENTON 2 ROW OPEN EDGE BASKETWEAVE 6 RUFFLED HAT – RED (DESIRABLE; NICE COLOR)**
- \_\_\_279. 1985 C.C.G.A. Fenton Large size 2 Row Open Edge J.I.P. Hat – Ice Green Opal. (souvenir of Canadian Carnival Glass Assoc.)
- \_\_\_280. **FENTON 2 ROW OPEN EDGE J.I.P. HAT – RED (SCARCE; REALLY NICE)**
- \_\_\_281. **FENTON 2 ROW OPEN EDGE J.I.P. HAT – RED (SCARCE; REALLY NICE)**
- \_\_\_282. **FENTON 2 ROW OPEN EDGE J.I.P. HAT – AMBER / AMBERINA (REALLY NICE COLOR; VERY SCARCE AND DESIRABLE)**
- \_\_\_283. Fenton Orange Tree two Handled Loving Cup – Green (rare and desirable; nice)
- \_\_\_284. 6" Tall Rindskopf Vining Leaf ftd. Vase - Marigold (very scarce)
- \_\_\_285. 7 ½" Tall Brockwitz Rose Garden Letter Vase - Blue (rare, but cracked)
- \_\_\_286. **5 ½" TALL EUROPEAN ART GLASS "SPIDER WEB" VASE – COBALT BLUE (RARE AND VERY DESIRABLE; REALLY NICE)**
- \_\_\_287. **9 7/8" TALL EUROPEAN ART GLASS VASE WITH DOTTED RIBS – GREEN (REALLY NICE; RARE AND DESIRABLE)**
- \_\_\_288. U.S. Glass Estate Perfume Bottle and Stopper – Gray Flash (scarce; some wear)
- \_\_\_289. 1 7/8" Tall x 2 7/8" Diam. (Maker ?) Wide Panel ftd. Salt Dip – Lt. Mari. (scarce)
- \_\_\_290. **N RIBBED J.I.P. VASE – EMERALD GREEN (SUPER COLOR AND IRID.; EXCELLENT EXAMPLE)**
- \_\_\_291. **N RIBBED J.I.P. VASE – PURP. (ANOTHER WITH EXCELLENT COLOR AND IRID.)**
- \_\_\_292. **N POPPY OVAL RUFFLED RELISH TRAY WITH RIBBED EXT. – PURP. (VERY SCARCE; GREAT IRID.; ATTRACTIVE)**

- \_\_\_293. N G & C Covered Sweetmeat Compote – Purp. (scarce; nice color)  
 \_\_\_294. 9 5/8" N Stippled Rays Lg. Bowl with P.C.E. and Plain Ext. – Mari. (super irid.)  
 \_\_\_295. **FENTON STRETCH 10 ¼" TALL PANELED CANDLESTICK – VASELINE (TOUGH SINGLE STICK; GREAT COLOR AND IRID.)**  
 \_\_\_296. (1) Fenton Blackberry Spray 2 sided Hat and (1) Fenton 2 Row Open Edge 2 sided Hat – Mari. (selling 2 for 1)  
 \_\_\_297. (1) Fenton Honeycomb and Clover 4 sided 2 Handled Bon Bon and (1) Fenton Butterfly and Berry ftd. Berry Bowl – Mari. (selling 2 for 1)  
 \_\_\_298. Fenton Persian Medallion Hair Receiver – Mari. (scarce)  
 \_\_\_299. (1) 6" Fenton Persian Medallion Flat Plate – Mari. and (1) 8" Fenton Persian Medallion I.C. Shaped Bowl with Berry Ext. – Mari. (selling 2 for 1)  
 \_\_\_300. **7 1/8" FENTON LEAF CHAIN 6 RUFFLED BOWL – RED (RARE AND VERY DESIRABLE – TOUGH ITEM TO FIND; NICE ONE!)**  
 \_\_\_301. **FENTON HOLLY 6 RUFFLED HAT – RED (VERY SCARCE; NICE COLOR AND IRID.)**  
 \_\_\_302. Fenton Holly 4 sided Hat – Aqua (scarce color)  
 \_\_\_303. Fenton Lotus and Grape 4 sided 2 Handled Bon Bon – Blue (nice item)  
 \_\_\_304. Fenton Illusion 4 sided 2 Handled Bon Bon – Blue (scarce pattern)  
 \_\_\_305. Fenton Thistle Lg. ftd. Oval Banana Boat – Blue (very scarce; nice color and irid.)  
 \_\_\_306. Fenton Vintage Grape Small size Single Lily Epergne – Blue (scarce; nice color an irid.)  
 \_\_\_307. 6 ¼" Tall Fenton April Showers Squatty Swung Vase – Blue (nice size; nice color and satiny irid.)  
 \_\_\_308. 9" Fenton Knotted Beads Swung Vase with T.C.E. – Blue (nice color and irid.)  
 \_\_\_309. 8 7/8" Fenton Vintage Grape Bowl with 3 in1 Edge – Blue (satiny)  
 \_\_\_310. Fenton Mikado Lg. 8 Ruffled Stemmed Compote – Mari. (nice color; scarce)  
 \_\_\_311. Fenton Orange Tree Handled Loving Cup – Mari. (very scarce; nice color and irid.)  
 \_\_\_312. 10 ½" Tall Fenton Plume Panels Swung Vase – Mari.  
 \_\_\_313. 11 ¾" Tall Fenton Diamond Rib Standard Swung Vase – Amyth.  
 \_\_\_314. 3 pc. Lot: (1) Fenton B & B Tumbler; (1) Orange Tree Hand Breakfast Creamer and (1) Rose Wreath Stemmed Compote – Blue (selling 3 for 1)  
 \_\_\_315. (1) 8" Fenton Acorns low 8 Ruffled Bowl and (1) 7" Fenton Vintage Grape 6 Ruffled Bowl – Green (selling 2 for 1)  
 \_\_\_316. Fenton Vintage Grape ftd. Fern Dish – Green (nice color)  
 \_\_\_317. Fenton Vintage Grape ftd. Fern Dish – Blue (nice color)  
 \_\_\_318. Fenton Vintage Grape small Epergne Lily only – Green  
 \_\_\_319. Signed Dugan / Diamond Fan ftd. Handled Gravy Boat – Clear Opal. (not carnival)  
 \_\_\_320. **9 ¼" DUGAN ROUND UP FLARED PLATE – PURP. (VERY SCARCE WITH BRIGHT HIGHLIGHTS)**  
 \_\_\_321. 6 ¼" Dugan Smooth Rays Int. with J.H. Ext. – Purp. (nice color)  
 \_\_\_322. (2) Dugan Fisherman's Handled Mugs – Purp. (selling so much each for pair)  
 \_\_\_323. (1) 8 ½" Dugan Windflower 6 Ruffled Bowl – Mari. and (1) Dugan Beaded Basket – Mari. (selling 2 for 1)  
 \_\_\_324. Dugan Windflower Handled Sauce – Mari.  
 \_\_\_325. (1) Dugan Mary Ann Handled Vase – Mari. and (1) Twig Bud Vase – Mari. (selling 2 for 1)  
 \_\_\_326. Dugan Cherry Wreath Lg. Oval Master Berry Bowl – Purp.  
 \_\_\_327. Dugan Many Fruits Ruffled Punch Top – Purp. (damaged badly)  
 \_\_\_328. Imperial Star Medallion Handled Milk Pitcher – Mari.  
 \_\_\_329. Imperial Grape Wine Decanter with no Stopper – Purp. (super irid.)  
 \_\_\_330. **IMPERIAL GRAPE WATER CARAFE – PURP. (SCARCE; NICE COLOR AND IRID.)**  
 \_\_\_331. 7" Tall x 2 ½" Base Imperial Ripple Small Swung Vase – Dk. Mari. (nice color)  
 \_\_\_332. 7 ½" Tall Imperial Miniature Morning Glory Swung Vase – Dk. Mari.  
 \_\_\_333. 10 1/2" Tall Imperial Ribbed J.I.P. Vase – Dk. Mari.  
 \_\_\_334. N G & C Cologne Bottle with no Stopper – Lt. Amyth. (nice color)  
 \_\_\_335. **N G & C 8 PC. STANDARD SIZE PUNCH SET WITH STRAIGHT FLARED EDGE – MARI. (RARE SHAPE FOR THIS SET; QUITE RARE – TOUGH TO FIND)**  
 \_\_\_336. **N G & C TOBACCO JAR AND LID – MARI. (VERY SCARCE; HAS ALL THE PRONGS)**  
 \_\_\_337. **N G & C STIPPLED CRACKER JAR AND LID – MARI. (LID IS DARK; QUITE A RARE VARIATION)**  
 \_\_\_338. N G & C Single Candlestick – Dk. Mari. (really nice irid.)  
 \_\_\_339. Pair N G & C Candlesticks – Purp. (scarce; one is exceptional)  
 \_\_\_340. **DUGAN G & C PERFUME BOTTLE AND STOPPER – PURP. (RARE AND DESIRABLE; NICE AVERAGE COLOR)**  
 \_\_\_341. N G & C ftd. Hatpin Holder – Purp. (scarce; nice color)  
 \_\_\_342. N G & C ftd. Hatpin Holder – Purp. (scarce)  
 \_\_\_343. N G & C Covered Powder Jar plus one extra base – Purp. (nice color)  
 \_\_\_344. N G & C Large Dresser Tray – Purp (chip on edge)  
 \_\_\_345. N G & C Handled Pin Nappy from Punch Cup – Purp. (scarce)  
 \_\_\_346. N G & C ftd. Hatpin Holder – Green (scarce color)  
 \_\_\_347. **N G & C COLOGNE BOTTLE AND STOPPER – GREEN (VERY DESIRABLE; NICE COLOR AND IRID.)**



\_\_\_ 348. N G & C Powder Jar with lid – Green (scarce color) \_\_\_\_\_ 379.  
 \_\_\_ 349. N G & C Master Berry Bowl – Purp.  
 \_\_\_ 350. N G & C Lg. Covered Compote – Purp. (scarce; has  
 chip under lid edge) \_\_\_\_\_ 380.  
 \_\_\_ 351. N G & C Covered Cracker Jar – Purp. (scarce; nice  
 color)  
 \_\_\_ 352. N G & C Covered Sweetmeat Compote – Purp. (nice  
 color and irid.) \_\_\_\_\_ 381.  
 \_\_\_ 353. N G & C Covered Sweetmeat Compote – Purp.  
 (scarce) \_\_\_\_\_ 382.  
 \_\_\_ 354. (5) N G & C domed Sherbets – Purp. (selling as a  
 set; scarce) \_\_\_\_\_ 383.  
 \_\_\_ 355. **N G & C ICE CREAM BOWL WITH**  
**BASKETWEAVE EXT. – PURP. (VERY SCARCE**  
**WITH REALLY NICE COLOR AND IRID.)** \_\_\_\_\_ 384.  
 \_\_\_ 356. 9" N G & C Plate with Plain Ext. – Purp. (scarce with  
 great color) \_\_\_\_\_ 385.  
 \_\_\_ 357. 8 ¾" N G & C Plate with Basketweave Ext. – Amyth.  
 (satiny) \_\_\_\_\_ 386.  
 \_\_\_ 358. 9" N G & C Variant Plate with Basketweave Ext. –  
 Amyth. (satiny) \_\_\_\_\_ 387.  
 \_\_\_ 359. 9" N G & C Variant Plate with Basketweave Ext. –  
 Amyth. (matches above) \_\_\_\_\_ 388.  
 \_\_\_ 360. 7 7/8" N G & C Plate with Basketweave Ext. – Purp.  
 (scarce size; has reddish irid.) \_\_\_\_\_ 389.  
 \_\_\_ 361. 7 ½" N G & C Plate with Basketweave Ext. – Amyth.  
 (satiny) \_\_\_\_\_ 390.  
 \_\_\_ 362. 6 ¼" N G & C Handgrip Plate with Basketweave Ext.  
 – Amyth. (scarce; light base color) \_\_\_\_\_ 391.  
 \_\_\_ 363. **N G & C 6 PC. TABLE SET – PURP. (SELLING AS**  
**A SET; NICE COLOR AND IRID.)** \_\_\_\_\_ 392.  
 \_\_\_ 364. N G & C Covered Butter Dish – Purp. (scarce)  
 \_\_\_ 365. **DUGAN G & C FTD. OVAL BANANA BOAT –**  
**BLUE (RARE COLOR WITH BRIGHT GOLD IRID.)** \_\_\_\_\_ 393.  
 \_\_\_ 366. Dugan G & C ftd. Oval Banana Boat – Purp. (scarce;  
 rough on edge) \_\_\_\_\_ 394.  
 \_\_\_ 367. N G & C small size ftd. Ruffled Fruit Bowl – Purp.  
 (nice color) \_\_\_\_\_ 395.  
 \_\_\_ 368. N G & C 7 pc. Water Set – Purp. \_\_\_\_\_ 396.  
 \_\_\_ 369. N Singing Bird Handled Creamer – Mari. \_\_\_\_\_ 397.  
 \_\_\_ 370. **N SINGING BIRD 7 PC. WATER SET – DK. MARI.**  
**(SCARCE SET WITH NICE DARK COLOR)** \_\_\_\_\_ 398.  
 \_\_\_ 371. N Singing Bird Handled Creamer – Purp.  
 \_\_\_ 372. N Peacock at the Fountain Covered Butter Dish –  
 Purp. (nice example; great color) \_\_\_\_\_ 399.  
 \_\_\_ 373. **N DRAPERY RUFFLED ROSE BOWL – AQUA**  
**OPAL. (NICE OVERLAY)** \_\_\_\_\_ 400.  
 \_\_\_ 374. N Drapery Ruffled Rose Bowl – Blue (chip on base)  
 \_\_\_ 375. **9" N STRAWBERRY STIPPLED PLATE WITH**  
**RIBBED EXT. – AMYTH. (VERY SCARCE; VERY**  
**DESIRABLE; NICE COLOR)** \_\_\_\_\_ 401.  
 \_\_\_ 376. N Strawberry Plate with Basketweave Ext. – Green  
 (silvery)  
 \_\_\_ 377. 9 7/8" N Wild Strawberry Lg. 8 Ruffled Bowl with  
 Basketweave Ext. – Purp. (nice color; chip on edge)  
 \_\_\_ 378. (2) 6 ¼" N Wild Strawberry 6 Ruffled Sauces with  
 Plain Ext. – Purp. (2 variations; nice color)

(1) N Drapery Variant Swung Vase – Dk. Mari. with  
 a chip on the base and (1) N Four Pillars Swung  
 Vase – Aqua Opal. with a chip on its toe  
**N TORNADO TRI-CORNERED VASE – PURP.**  
**(RARE AND DESIRABLE; NICE COLOR AND**  
**IRID.)**  
**14" TALL X 4 ¾" BASE N TREE TRUNK MID-SIZE**  
**SWUNG VASE – PURP. (VERY SCARCE; NICE**  
**COLOR AND IRID.)**  
 6 ¼" Tall x 5" Top Diam. N Diamond Point Squatty  
 Flared Vase – odd Amyth. (odd tint; tough)  
 6 ½" Tall N Thin Rib Squatty Flared Vase – Amyth.  
 (1) N Thin Rib Squatty Swung Vase and (1) N Fine  
 Rib Squatty Swung 6 Ruffled Vase - Green (both  
 are 7 ¼" tall; selling 2 for 1)  
 (1) 10 ½" Tall and (1) 7 ¾" Tall N Tree Trunk  
 Standard Swung Vases – Green / Mari. (selling 2  
 for 1)  
 10 ¾" N Tree Trunk Standard Swung Vase – Green  
 Opal.  
 9 ½" N Wishbone Lg. Bowl with P.C.E. and Bas-  
 ketweave Ext. – Amyth. (satiny example)  
 (2) N Singing Birds Handled Mugs – Purp. (selling 2  
 for 1)  
 N Raspberry Tumbler – Purp.  
**N GRAPE AND GOTHIC ARCHES 7 PC. WATER**  
**SET – BLUE (VERY SCARCE SET; NICE COLOR**  
**AND DESIRABLE)**  
 N Raspberry Handled Milk Pitcher – Amyth. (scarce;  
 satiny)  
 9" N Three Fruits Plate with Basketweave Ext. –  
 Mari. (nice color and irid.)  
 N Eight Sided Handled Bushel Basket – Mari. (nice  
 color)  
 4 ¼" N Memphis Round ind. Berry Bowl – Mari.  
 (scarce item)  
**9" N GOOD LUCK 8 RUFFLED BOWL WITH**  
**RIBBED EXT. – ELEC. BLUE (VERY DESIRABLE**  
**WITH BRIGHT BLUE IRID.)**  
 8 7/8" N Good Luck 8 Ruffled Bowl with Bas-  
 ketweave Ext. – Mari. (nice satiny finish)  
 9" N Good Luck Flared Plate with Basketweave Ext.  
 – Amyth. (scarce; satiny and nice)  
 N Daisy and Plume 3 ftd. Ruffled Rose Bowl –  
 Green (nice)  
 N Beaded Cable ftd. Ruffled Rose Bowl – Aqua  
 Opal. (very nice example; nice opal.)  
**N HEARTS AND FLOWERS STEMMED 6**  
**RUFFLED COMPOTE WITH THIN RIB EXT. –**  
**MARI. / CUSTARD (EXTREMELY RARE &**  
**EXTREMELY DESIRABLE; REALLY NICE**  
**EXAMPLE)**  
**N HEARTS AND FLOWERS STEMMED 6**  
**RUFFLED COMPOTE WITH THIN RIB EXT. –**  
**PERSIAN BLUE (HAS ODD MILKY BLUE BASE**  
**COLOR; RARE)**

- \_\_\_ 402. N HEARTS AND FLOWERS STEMMED 6 RUFFLED COMPOTE WITH THIN RIB EXT. – ICE BLUE OPAL. (SUPER PASTEL EXAMPLE; BRIGHT LT. BLUE BASE COLOR)
- \_\_\_ 403. N HEARTS AND FLOWERS STEMMED 6 RUFFLED COMPOTE WITH THIN RIB EXT. – AQUA OPAL. (RARE AND DESIRABLE; HAS A NICE OVERLAY)
- \_\_\_ 404. N HEARTS AND FLOWERS STEMMED 6 RUFFLED COMPOTE WITH PLAIN EXT. – ICE BLUE (RARE AND A SUPER EXAMPLE; BRIGHT IRID.)
- \_\_\_ 405. N HEARTS AND FLOWERS STEMMED 6 RUFFLED COMPOTE WITH RIBBED EXT. – RENNIGER BLUE (RARE & VERY DESIRABLE; SUPER EXAMPLE; GREAT BASE COLOR)
- \_\_\_ 406. N HEARTS AND FLOWERS STEMMED 6 RUFFLED COMPOTE WITH THIN RIB EXT. – COBALT BLUE (VERY SCARCE WITH NICE HIGHLIGHTS)
- \_\_\_ 407. N HEARTS AND FLOWERS STEMMED 6 RUFFLED COMPOTE WITH THIN RIB EXT. – GREEN (RARE AND VERY DESIRABLE; NICE IRID.)
- \_\_\_ 408. N HEARTS AND FLOWERS STEMMED 6 RUFFLED COMPOTE WITH THIN RIB EXT. – PURP. (VERY SCARCE; NICE COLOR AND IRID.)
- \_\_\_ 409. N Hearts and Flowers Stemmed 6 Ruffled Compote with Thin Rib Ext. – White (scarce; super irid.)
- \_\_\_ 410. N Hearts and Flowers Stemmed 6 Ruffled Compote with Thin Rib Ext. – Mari. (nice color and irid.)
- \_\_\_ 411. N Peacock at the Fountain Stemmed 6 Ruffled Compote – Ice Blue (rare; desirable; small flake on base)
- \_\_\_ 412. N PEACOCK AT THE FOUNTAIN HANDLED WATER PITCHER – BLUE (VERY SCARCE; NICE COLOR)
- \_\_\_ 413. N Peacock at the Fountain Tumbler – Blue (really nice irid.)
- \_\_\_ 414. N Peacock at the Fountain Tumbler – Amyth. with Streaks (very scarce; tough color)
- \_\_\_ 415. N DAISY AND PLUME EXT. / BLACKBERRY INT. 8 RUFFLED 3 FTD. CANDY DISH – LIME ICE GREEN (RARE ITEM; GREAT COLOR AND IRID.)
- \_\_\_ 416. N Leaf and Beads ftd. Rose Bowl – Aqua Opal. (scarce; nice opal.)
- \_\_\_ 417. N Fine Cut and Roses Ruffled Rose Bowl with Fancy Int. – Ice Blue (nice irid.; small flake on one toe)
- \_\_\_ 418. N Fine Cut and Roses ftd. Ruffled Rose Bowl – Amyth.
- \_\_\_ 419. N Raspberry ftd. Handled Gravy Boat – Amyth. (scarce; pretty good feet)
- \_\_\_ 420. N GOOD LUCK 8 RUFFLED BOWL WITH RIBBED EXT. – AQUA OPAL. (RARE AND VERY DESIRABLE PASTEL EXAMPLE; SOME ROUGHNESS AROUND HORSESHOE)
- \_\_\_ 421. N GOOD LUCK BOWL WITH P.C.E. AND RIBBED EXT. – ELEC. BLUE (VERY DESIRABLE WITH BLUE HIGHLIGHTS)
- \_\_\_ 422. N Three Fruits Bowl with P.C.E. and Plain Ext. – Green (nice color and irid.)
- \_\_\_ 423. N Three Fruits Flared Plate with Plain Ext. – Green (nice color; satiny)
- \_\_\_ 424. N Three Fruits Flared Plate with Basketweave Ext. – Amyth. (satiny finish)
- \_\_\_ 425. N THREE FRUITS STIPPLED FLARED PLATE WITH RIBBED EXT. – ELEC. BLUE (RARE AND DESIRABLE; GREAT BLUE HIGHLIGHTS)
- \_\_\_ 426. N Three Fruits Medallion 8 Ruffled spatula ftd. Bowl with Meander Ext. – Elec. Blue (very scarce item in this color)
- \_\_\_ 427. N Fruits and Flowers Stemmed Handled Bon Bon – Blue (super color)
- \_\_\_ 428. N FRUITS AND FLOWERS STEMMED HANDLED BON BON – WHITE (SCARCE WITH REALLY NICE IRID.)
- \_\_\_ 429. N Strawberry Flared Plate with Basketweave Ext. – Green (satiny)
- \_\_\_ 430. N PEACOCKS STIPPLED BOWL WITH P.C.E AND NON-IRIDIZED NARROW BASE – BLUE (RARE AND VERY TOUGH TO FIND; REALLY NICE)
- \_\_\_ 431. N PEACOCKS 8 RUFFLED BOWL WITH RIBBED EXT. – AQUA OPAL. (RARE AND DESIRABLE; NICE WITH GREAT OPAL.)
- \_\_\_ 432. N PEACOCKS 8 RUFFLED BOWL WITH RIBBED EXT. – ICE BLUE (ACTUALLY QUITE AN ATTRACTIVE EXAMPLE)
- \_\_\_ 433. N PEACOCKS FLAT PLATE WITH RIBBED EXT. – AMYTH. (SUPER IRID.; SORTA RADIUM; DESIRABLE)
- \_\_\_ 434. N Peacocks Flat Plate with Ribbed Ext. – Ice Green (nice example with nice irid.)
- \_\_\_ 435. N POPPY SHOW FLAT PLATE – ICE BLUE (EXCELLENT EXAMPLE WITH PINKS AND BLUES)
- \_\_\_ 436. N ROSE SHOW 8 RUFFLED BOWL – AQUA OPAL. (ALWAYS DESIRABLE; NICE OPAL. AND IRID.)
- \_\_\_ 437. N ROSE SHOW FLARED PLATE – ELEC. BLUE (GREAT BLUE FINISH – PERFECT AND NICE)
- \_\_\_ 438. N BASKET OF ROSES STIPPLED HANDLED BON BON WITH BASKETWEAVE EXT. – AMYTH. (VERY SCARCE; NICE COLOR AND IRID.)
- \_\_\_ 439. N GRAPE AND CABLE VARIANT STIPPLED PLATE WITH RIBBED EXT. – BLUE (RARE WITH GOLDISH HIGHLIGHTS; NICE)
- \_\_\_ 440. N G & C STANDARD SIZE RUFFLED 8 PC. PUNCH SET – PURP. (RARE; GREAT COLOR SET AND IRID.)
- \_\_\_ 441. N G & C Covered Powder Jar – Purp. (nice color)
- \_\_\_ 442. Dugan G & C Lg. Oval Dresser Tray – Purp. (nice color and irid.)
- \_\_\_ 443. (2) N G & C COLOGNE BOTTLES AND STOPPERS – PURP. (SELLING SO MUCH EACH FOR THE PAIR)
- \_\_\_ 444. N G & C ftd. Hatpin Holder – Amyth. (scarce; nice color)

445. **DUGAN G & C PERFUME BOTTLE AND STOPPER – PURP. (VERY SCARCE; STOPPER IS REALLY NICE)**
446. **N G & C 6 PC. TABLE SET – PURP. (SUPER SET WITH NICE IRID.)**
447. (2) N Singing Bird Handled Mugs – Mari. (selling 2 for 1)
448. Group (3) Hatpins – Dark (selling x3)
449. Group (3) Hatpins – Dark (selling x3)
450. **9" DUGAN FANCIFUL FLAT PLATE – BLUE (HAS TO BE ONE OF THE BETTER EXAMPLES I'VE SEEN; NICE!)**
451. **9" DUGAN FANCIFUL FLAT PLATE – DK. P. OPAL. (ANOTHER REALLY EXCEPTIONAL EXAMPLE)**
452. Dugan Floral and Grape Bulbous Water Pitcher – Amyth. (nice color)
453. (3) Dugan Floral and Grape Tumblers – Amyth. (selling 3 for 1)
454. Dugan Mary Ann Handled Vase – Amyth. (scarce; satiny)
- 454A. Dugan Fisherman's Handled Mug – Purp. (super example)
455. Dugan Starfish Stemmed Handled Bon Bon – Amyth.
456. Dugan Grape Delight 6 ftd. Ruffled Rose Bowl – White (nice irid.)
457. 3 pc. lot: (1) Dugan Raindrops domed 10 Ruffled Bowl; (1) Dugan Paneled Cherries 3 ftd. 6 Ruffled Bowl and (1) 5" Petal and Fan 8 Ruffled ind. Berry Bowl – P. Opal. (selling 3 for 1)
458. 3 pc. lot: (1) Dugan Basketweave Mini Handled Flower Basket, (1) Leaf Ray Nappy, and (1) 8 ½" Windflower 10 Ruffled Bowl – Mari. (selling 3 for 1)
459. 1984 ACGA Canandaigua, N.Y. Whimsey Seacoast Handled Basket – Red (great color; a toughie)
460. **1987 ACGA CANANDAIGUA MORNING GLORY TANKARD WATER PITCHER WITH ENAM. DECOR. – POWDER BLUE OPAL. (HAND PAINTED BY LOUISE PIPER; RARE)**
461. (2) Pastel San Salts – (1) Pink; (1) Celeste Blue (selling 2 for 1)
462. (1) Imperia Open Rose Plate and (1) Imperial Pansy Oval Relish Tray – Mari. (selling 2 for 1)
463. 6" Imperial Grape Flat Plate and a pair Normandie Candlesticks – Mari. (selling 2 for 1)
464. Imperial Grape 7 pc. Water Set – Mari.
465. Imperial Diamond Lace Handled Water Pitcher – Purp. (really nice irid.)
466. Imperial Diamond Lace Tumbler – Purp. (super example)
467. Imperial Octagon 6 pc. Wine Set – Mari. (nice color)
468. **9" IMPERIAL PANSY LOW 8 RUFFLED BOWL – PURP. (SUPER COLOR AND IRID.)**
469. 8 ½" Westmoreland Daisy Wreath 6 Ruffled Bowl – Blue Opal. (scarce; nice color and opal.)
470. **3" X 3 ½" WESTMORELAND INTAGLIO DAISY SMALL 4 SIDED BOWL – P. OPAL. (RARE AND VERY DESIRABLE; GREAT COLOR)**
471. 8 ½" Westmoreland Carolina Dogwood 6 Ruffled Bowl – Lt. P. Opal. (nice opal.)
472. Fenton Smooth Rib Interior Stemmed Spittoon Shaped Compote Vase – Green (nice color)
473. Fenton Blackberry Spray Crimped Edge J.I.P. Hat – Aqua (scarce; really nice example)
474. Fenton Orange Tree Handled Loving Cup – Green (rare and desirable; nice color and irid.)
475. **9" FENTON ORANGE TREE WITH TRUNK PLATE – GREEN (VERY RARE AND VERY DESIRABLE; GREAT COLOR SUPER TOUGH TO SEE)**
476. 9 ½" Fenton Orange Tree with Trunk Plate – Blue (very scarce; nice color)
477. 9" Fenton Orange Tree Plate – White (scarce; super example)
478. **9" FENTON PEACOCK AT THE URN LOW 10 RUFFLED BOWL – BLUE (REALLY NEAT... HAS A RADIUM FINISH)**
479. Fenton Peacock at the Urn Stemmed Ruffled Compote – Aqua / Mari. (great color and irid.)
480. **FENTON TWO FLOWERS GIANT FTD. ROSE BOWL – BLUE (VERY RARE AND IS A SUPER EXAMPLE; GREAT COLOR AND IRID.)**
481. 9" Fenton Persian Medallion Flat Plate – Blue (very scarce; tough to find)
482. 7" Fenton Persian Medallion Flat Plate – Blue (rare size; nice color and satiny irid.)
483. 9" Fenton Holly Bowl with 3 in 1 Edge – Blue
484. 9 ¼" Fenton Holly Flat Plate – Blue (satiny)
485. 9" Fenton Leaf Chain Flat Plate – White (super irid.)
486. 9 ¼" Fenton Cherry Chain Lg. Bowl with 3 in 1 Edge – Blue (nice color and shape)
487. 10" Fenton Stag and Holly Lg. 8 Ruffled ftd. Bowl – Mari.
488. Fenton Birds and Cherries 2 sided Handled Card Tray – Blue (satiny finish)
489. 3 pc. lot: (1) 7" Fenton Vintage Grape Bowl; (1) Lotus and Poinsettia ftd. Ruffled Sauce and (1) Fenton Plain Compote – Mari. (selling 3 for 1)
490. Fenton 2 Row Open Edge Basketweave J.I.P. Hat – Aqua (great example; nice)
491. **FENTON 2 ROW OPEN EDGE BASKETWEAVE J.I.P. HAT – RED (NICE COLOR AND IRID.)**
492. Pair 9" Tall Westmoreland Corinth Swung Vases – Amyth. (selling 2 for 1)
493. Westmoreland Louisa ftd. 6 Ruffled Nut Bowl – Limey Green (odd base color)
494. Liberty Bell Bank – Lt. Mari.
495. St. Clair Holly Amber Whimsey Flared Top Tumbler – Blue (really neat item in a neat shape)
496. L.G. Smith Repro Hobstar Breakfast Sugar and Creamer – Purp.
497. L.G. Smith Repro Hobstar Handled Basket – Red
498. Repro Stork in the Rushes Water Pitcher – Purp.
499. I.G. Grape Handled Milk Pitcher with Label – Amber
500. I.G. Grape Stemmed Goblet - Smoke

DONALD DORAIS  
150 HIGHLAND AVENUE  
CUMBERLAND, RI 02864

PROVIDENCE RI 02861  
**BURNS**  
AUCTION SERVICE



Visit [www.necga.com](http://www.necga.com) for pictures and Brochure. Click on carnival glass links page. Look for Burns Auction. AUCTION FLEX AVAILABLE FOR THIS AUCTION. CHECK US OUT ON AUCTION ZIP #29661.



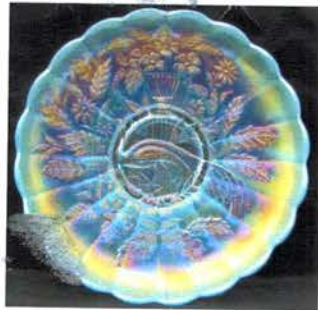
LOT # 470

LEE MARKLEY  
BOX 306  
MENTONE, IN 46539

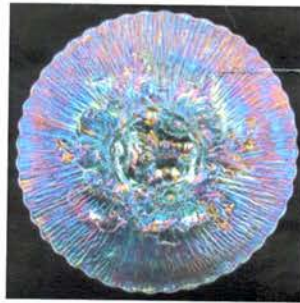
**CARNIVAL GLASS AUCTION JULY 30th & AUG. 1st, 2015**



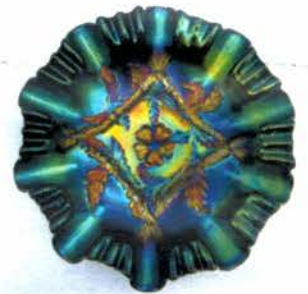
LOT # 177



LOT # 35



LOT # 435



LOT # 180



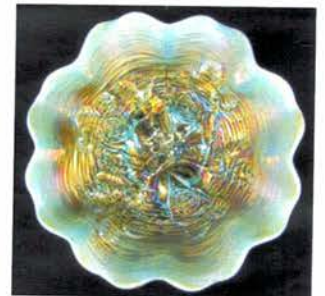
LOT # 420



LOT # 405



LOT # 407



LOT # 436



LOT # 45



LOT # 270



LOT # 300



# 433