

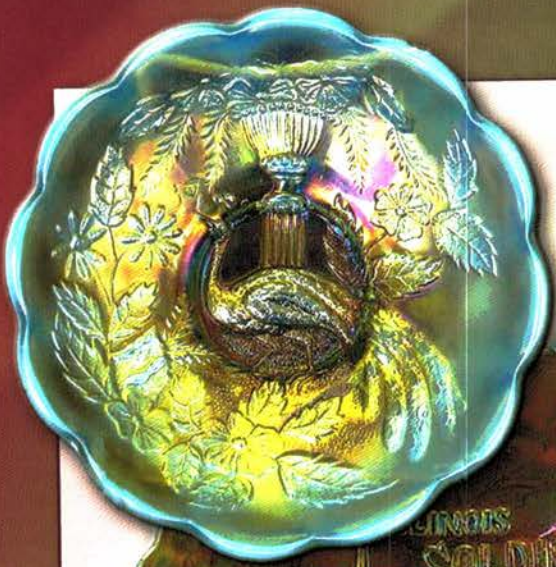
LINCOLN LAND  
CARNIVAL GLASS CLUB CONVENTION

# Carnival Glass

## 2015 AUCTION

Saturday, June 6, 9:30 a.m.

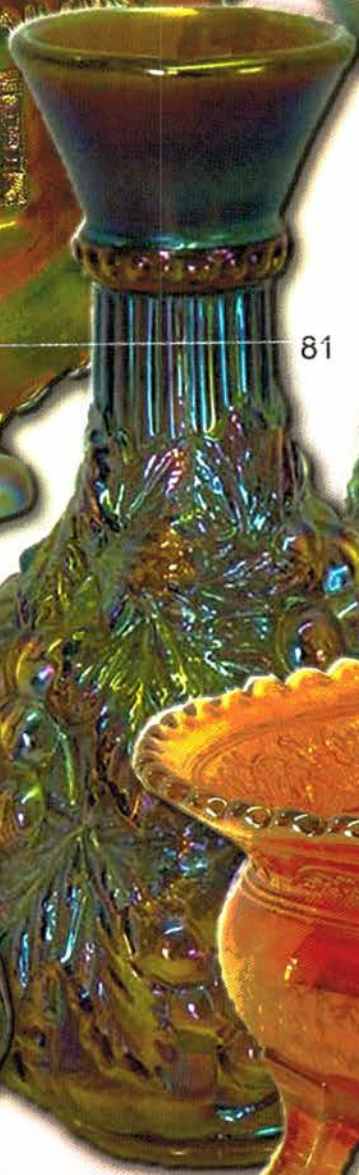
Best Western Airport Hotel  
Milwaukee, Wisconsin



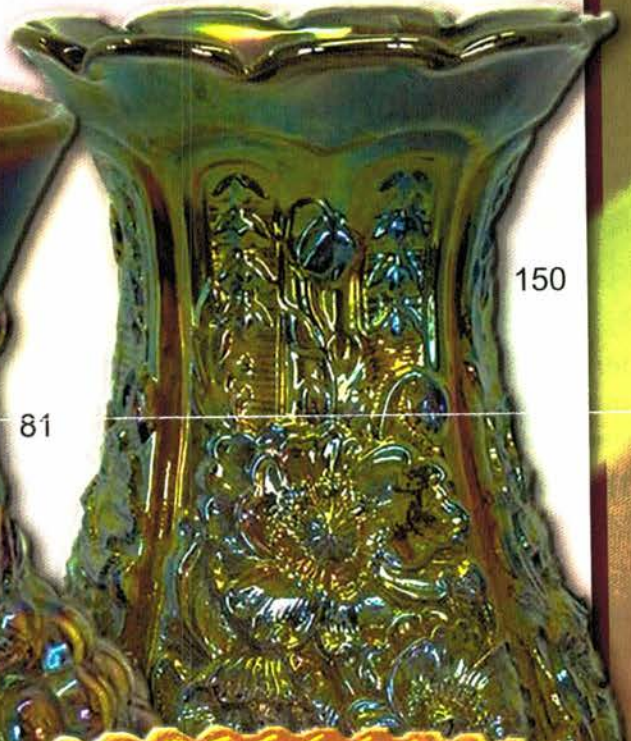
75



9



81



150



27



25

JIM & JAN SEECK

*Seeck* Auctions

641-424-1116

To view the complete auction, check our website at: [www.seeckauction.com](http://www.seeckauction.com)

JIM & JAN SEECK

# CARNIVAL GLASS AUCTION

641-424-1116

**Saturday, June 6, 2015 — 9:30 AM**

**Best Western Milwaukee Airport Hotel and Convention Center  
5105 South Howell Avenue Milwaukee, Wisconsin**

**NO BUYER'S PREMIUM — OPEN TO THE PUBLIC**

ABSENTEE BIDDING is available on-line through Auction Flex  
using our online catalog at [www.seeckauction.com](http://www.seeckauction.com)

★ **Online absentee bidding closes Fri., June 5 at 9 p.m. CST**

Please email us and we will put you on our email mailing list for auction notices.

e-mail: [jimjan@seeckauction.com](mailto:jimjan@seeckauction.com)

## Two California Collections:

### The Helen Bell Estate and the Betty and Robbie Robertson Estate

**Lincoln Land Club Convention info:** Contact President Jack Targonski at [jackt3@rcn.com](mailto:jackt3@rcn.com) If staying at the Best Western Hotel, for reservations please call: (414)769-2100

Visit the Lincoln Land Carnival Glass Club website at [www.llcgc.com](http://www.llcgc.com)

**Terms:** Cash or Check, VISA, MasterCard & Discover accepted w/proper ID. 4% Clerking Fee on all purchases made using credit cards. Announcements made day of sale take precedence over any printed information.

### We have 3 options for absentee bidding for our *live* auctions:

- 1) If you DO NOT have internet access, you can: Call us by phone to enter your bids at (641)424-1116 OR by sending the numbers of the item(s) desired and the amount bid on each to: Seeck Auctions, PO Box 377, Mason City, Iowa 50402. We would prefer you call us with your bids rather than send them in a letter.) We will enter your bids into our online bidding system.  
★ Have all written bids in by **Wed., June 3**
- 2) Enter your bids from our website into our online catalog through the Auction Flex system.
  - ◆ **First-time bidders:** Set up your account by creating a user name and password and filling out basic information. You will also need to **register for the auction** which will ask you to enter a valid credit card number. This card will be validated by a one time only charge of \$1 charge to your card. **You will use this user name and password for all our auctions.**
  - ◆ You are not required to pay by credit card if you are successful with your online bid. We will let you know what you owe us through an email and you can decide how you would like to pay us.
  - ◆ An exciting advantage to online bidding is that you can be notified by email if you are outbid on an item, which lets you increase your bid in time, or bid on something else. **There is a cutoff date and time, for each auction, for entering your bids online.** ★ **Online absentee bidding for this auction closes Friday, June 5 at 9 p.m. CST.**
  - ◆ Remember that just because you are the high bidder in the online catalog, this does not mean you have won the item. Your bid still needs to **beat** the floor bidders and live phone bidders. If your high bid lands with a floor bidder during the live auction, the floor bidder takes precedence. You might want to bid higher on a highly desired item for a better chance at winning its absentee bid.
  - ◆ If you do not receive an item that sold for less than your bid, assume we canceled your bid because the item had a severe manufacture problem, damage, or was not listed correctly.
- 3) **Live phone bidding is available on pieces with an estimated sale price of \$500 or more.** ★ Contact us by the **Thursday before the auction, which is June 4** We will need to know the lot# and the phone number that you can be reached at on the day of the auction. We also need your home phone number if different than the above number.

Please call with questions: 641-424-1116.

If you win an online bid you will be notified by phone or e-mail between one to three days after the auction.

There is a **\$7 handling charge** for each successful bid, with shipping and insurance charges additional.

**ONLINE BID INCREMENTS:**

|                         |                         |                                  |                      |
|-------------------------|-------------------------|----------------------------------|----------------------|
| \$1 - \$100/\$5         | \$100 - \$200/\$10      | \$200 - \$700/\$25               | \$700 - \$1,500/\$50 |
| \$1,500 - \$3,000/\$100 | \$3,000 - \$5,000/\$250 | \$5,000+ Auctioneer's Discretion |                      |

- \_\_\_ 1. Three Fruits 9" plate w/plain back - green - pretty
- \_\_\_ 2. Three Fruits 9" plate w/plain back - purple - pretty
- \_\_\_ 3. Three Fruits 9" plate w/plain back - marigold - nick on sharp point
- \_\_\_ 4. Ripple 14 1/2" vase - smoke - has 3 7/8" base
- \_\_\_ 5. Heavy Grape 6" bowl - marigold - pretty pastel irid.
- \_\_\_ 6. Raindrops dome ftd tightly crimped edge bowl - peach opal
- \_\_\_ 7. Imperial Grape IC shaped bowl - marigold - scarce shape
- \_\_\_ 8. Carolina Dogwood low bowl or plate - peach opal
- \_\_\_ 9. Enameled Stippled Petal dome ftd bowl - peach opal
- \_\_\_ **9a. Illinois Soldiers and Sailor's Home 7" plate - blue - super pretty example, as nice as they get!**
- \_\_\_ **10. Illinois Soldiers and Sailor's Home 7" plate - marigold - another beauty!**
- \_\_\_ 11. Windmill dresser tray - marigold - scarce
- \_\_\_ 12. Windmill milk pitcher - smoke - pretty, scarce color
- \_\_\_ 13. Windmill milk pitcher - lime green - a little light on irid., rare color
- \_\_\_ 14. Fisherman's mug - marigold - very pretty
- \_\_\_ **15. Peacock at the Fountain punch bowl & base - purple - very scarce & pretty, two very minor pinpoints on top edge of bowl**
- \_\_\_ **16. Peacock at the Fountain punch bowl & base - marigold - scarce, nice, heat check in point**
- \_\_\_ **17. Peacock at the Fountain punch bowl & base- ice blue - extremely rare color for these and pretty, point chipped off of bowl**
- \_\_\_ **18. Peacock at the Fountain punch bowl & base - ice green - extremely rare color, base has crack, bowl has one point cracked and glued back on**
- \_\_\_ 19. Double Stemmed Rose dome ftd 3 in 1 edge bowl - purple - super pretty, small shallow flake on base
- \_\_\_ 20. Beaded Cable rose bowl - aqua opal
- \_\_\_ **21. Amaryllis ftd plate - purple - scarce**
- \_\_\_ 22. Amaryllis ftd plate - marigold - super pretty
- \_\_\_ **23. Windmill deep round bowl - emerald green - lots of blue irid., a beauty, rare**
- \_\_\_ 24. Windmill deep round bowl - smoke - pretty
- \_\_\_ **25. Double Dutch large ftd whimsey spittoon- marigold - very pretty irid., rare chance to buy a whimsey, chip on one foot**
- \_\_\_ 26. Cobblestone ruffled bowl - green - scarce color for these
- \_\_\_ **27. Thumbprint & Ovals vase - purple - fantastic, super beautiful**
- \_\_\_ **28. Thumbprint & Ovals vase - marigold - also very pretty**
- \_\_\_ 29. Poppy pickle dish - blue - nice
- \_\_\_ 30. Poppy pickle dish - marigold - pretty
- \_\_\_ 31. N's Footed Fine Rib JIP 6 1/2" vase - green - neat vase
- \_\_\_ 32. Springtime 4 pc. table set - marigold - chip & heat check on creamer, large chip on rim on base of butter, chip on base of spooner, chip on base of sugar, sugar lid & butter dish lid are perfect
- \_\_\_ 33. Spiralex 10" vase - purple - very pretty, small chip on base
- \_\_\_ 34. Ski Star dome ftd tri-cornered bowl - peach opal - super!
- \_\_\_ 35. Australian Kookaburra ruffled bowl - marigold - very pretty
- \_\_\_ 36. Dugan Vintage dome ftd ruffled bowl - amethyst-nice
- \_\_\_ 37. Honeycomb rose bowl - peach opal
- \_\_\_ **38. Rose Show ruffled bowl - ice green - scarce**
- \_\_\_ 39. Rose Show ruffled bowl - white - pretty irid.
- \_\_\_ 40. Rose Show ruffled bowl - marigold - nice
- \_\_\_ 41. N's #657 candlesticks - celeste blue - 8 1/2" tall
- \_\_\_ **42. Peacocks ruffled bowl w/ribbed back - aqua opal - nice**
- \_\_\_ **43. Peacocks ruffled bowl w/ribbed back - green - very pretty example**
- \_\_\_ 44. Peacocks ruffled bowl w/ribbed back - blue - electric, nice
- \_\_\_ 45. Palm Beach banana boat shaped whimsey - amethyst
- \_\_\_ 46. Diamond Points 10 1/2" vase - purple - pretty
- \_\_\_ 47. Garden Path Variant ruffled bowl - peach opal - very scarce bowl
- \_\_\_ **48. Peacock & Grape 3 in 1 edge bowl - lime green opal - nice**
- \_\_\_ 49. Peacock & Grape 3 in 1 edge bowl - green - minor nick on edge
- \_\_\_ **50. Farmyard 3 in 1 edge bowl - purple - very scarce, highly sought after, a bit silvery**
- \_\_\_ 51. Pinecone saucer shaped plate - green
- \_\_\_ 52. Butterfly & Tulip deep round ftd bowl - marigold
- \_\_\_ **53. Nippon PCE bowl w/ribbed back - ice green - very scarce, nice**
- \_\_\_ **54. Nippon PCE bowl w/ribbed back - lime green - rare color, couple of very minor spots between points in excess glass**
- \_\_\_ 55. Nippon PCE bowl w/ribbed back - ice blue - nice
- \_\_\_ 55a. Nippon PCE bowl w/BW back - green
- \_\_\_ 56. Nippon PCE bowl w/BW back - purple
- \_\_\_ 57. Nippon PCE bowl w/BW back - marigold - nice
- \_\_\_ **58. Concave Diamonds guest set - vaseline - scarce, nice**
- \_\_\_ **59. Pansy dresser tray - purple - nice**
- \_\_\_ 60. Pansy dresser tray - smoke - very pretty
- \_\_\_ 61. Pansy dresser tray - amber - scarce color
- \_\_\_ 62. Pansy dresser tray - marigold
- \_\_\_ **62a. M'burg Big Fish crimped edge bowl - amethyst - radium, unusual shaped bowl, rare**
- \_\_\_ 63. Thistle banana boat - blue - super, super pretty, small nick on outer edge

- \_\_\_ 64. Thistle banana boat - green - pretty
- \_\_\_ 65. Thistle banana boat - amethyst - nice, small nick on outer edge
- \_\_\_ 66. Thistle banana boat - marigold
- \_\_\_ **67. Drapery candy dish - green - rare color & very nice!**
- \_\_\_ **68. Drapery candy dish - blue - very pretty!**
- \_\_\_ 69. Drapery candy dish - purple - very pretty
- \_\_\_ 70. Drapery candy dish - marigold - dark & nice
- \_\_\_ 71. Drapery candy dish - white - pretty irid.
- \_\_\_ 72. Drapery candy dish - lime green - chip on foot
- \_\_\_ 73. Drapery candy dish - ice blue - minor nick on toe
- \_\_\_ 74. Curled Rib 8" JIP vase - smoke
- \_\_\_ **75. N's Peacock at Urn IC sauce - aqua opal - very scarce & highly desirable, nice**
- \_\_\_ 76. N's Peacock at Urn IC sauce - ice blue - nice
- \_\_\_ 77. N's Peacock at Urn IC sauce - ice green - scarce
- \_\_\_ 78. N's Peacock at Urn IC sauce - white
- \_\_\_ 79. N's Stippled Peacock at Urn IC sauce - blue - nice
- \_\_\_ 80. N's Peacock at Urn IC sauce - purple - pretty
- \_\_\_ 80a. N's Peacock at Urn IC sauce - marigold - very pretty
- \_\_\_ **81. Imperial Grape water carafe - smoke - very rare color & pretty**
- \_\_\_ **82. Imperial Grape water carafe - purple - fantastic!**
- \_\_\_ 83. Imperial Grape water carafe - marigold
- \_\_\_ 84. Zippered Heart 7 pc. berry set - purple - pretty set, one sauce has slight manufacture roughness on edge
- \_\_\_ 85. Peacock & Grape ruffled bowl - red - very scarce color
- \_\_\_ 86. Peacock & Grape ruffled bowl - green - pretty
- \_\_\_ 87. Peacock & Grape ruffled bowl - amethyst - nice
- \_\_\_ 88. Enameled Draped water pitcher - marigold - not sure on the name of the enameling?
- \_\_\_ 89. Stippled Fruits & Flowers ruffled 7" bowl - green
- \_\_\_ 90. Stippled Fruits & Flowers ruffled 7" bowl - marigold
- \_\_\_ 91. Rococo vase - smoke
- \_\_\_ **92. Peacocks PCE bowl w/ribbed back - green - scarce, nice**
- \_\_\_ 93. Peacocks PCE bowl w/ribbed back - purple
- \_\_\_ 94. Peacocks PCE bowl w/ribbed back - marigold
- \_\_\_ 95. Vintage 10" ruffled bowl - amethyst - very pretty for these, as nice as they get
- \_\_\_ 96. Vintage 10" ruffled bowl - lime green - scarce color
- \_\_\_ 97. Daisy & Drape flared out vase - blue - scarce, nick on top edge
- \_\_\_ **98. Daisy & Drape flared out vase - aqua opal - super pretty example**
- \_\_\_ 99. Dugan Stretch Glass 6 1/4" vase - ice green - square, crimped top, small flake on base
- \_\_\_ **100. Persian Garden fruit bowl & base - purple - super pretty, a beautiful set!**
- \_\_\_ **101. Persian Garden fruit bowl & base - white - nice**
- \_\_\_ 102. Persian Garden fruit bowl & base - peach opal - has marigold base
- \_\_\_ **103. N's Corn vase w/stalk base - coke bottle green - rare color for these**
- \_\_\_ **104. N's Corn vase w/plain base - marigold - scarce**
- \_\_\_ **105. N's Corn vase w/plain base - purple**
- \_\_\_ **106. N's Corn vase w/plain base - green - scarce**
- \_\_\_ 107. N's Corn vase w/stalk base - ice green - heat check in base
- \_\_\_ 108. Holly 9" plate - blue - nice
- \_\_\_ 109. Holly 9" plate - marigold - nice
- \_\_\_ **110. Tree Trunk 10 1/2" vase - sapphire - scarce color & nice**
- \_\_\_ **111. Tree Trunk 10" vase - blue - electric & nice**
- \_\_\_ 112. Pansy ruffled bowl - purple - pretty
- \_\_\_ 113. Pansy low ruffled bowl - smoke - nice
- \_\_\_ 114. Pansy low ruffled bowl - lavender - nice
- \_\_\_ 115. Fantail IC shaped ftd bowl - marigold
- \_\_\_ 116. Sunflower spt ftd ruffled bowl - amethyst - nice
- \_\_\_ 117. Sunflower spt ftd ruffled bowl - marigold
- \_\_\_ 118. Enameled Dugan Cherries ftd ruffled bowl - peach opal
- \_\_\_ **119. N's Peacock at Urn master IC bowl - ice green - always in demand, nice**
- \_\_\_ **120. N's Peacock at Urn master IC bowl - ice blue - nice**
- \_\_\_ **121. N's Peacock at Urn master IC bowl - purple - pretty**
- \_\_\_ **122. N's Peacock at Urn master IC bowl - pastel marigold - lots of pink & yellow irid., super**
- \_\_\_ **123. N's Peacock at Urn master IC bowl - marigold - dark**
- \_\_\_ **124. Tree Trunk mid-size 12 1/2" vase - white - scarce**
- \_\_\_ **125. Tree Trunk mid-size 12 1/2" vase - marigold - nice**
- \_\_\_ 126. Tree Trunk mid-size 13" vase - green - pretty, very minor pinpoint on ruffle
- \_\_\_ 127. Luster Rose fernery - smoke
- \_\_\_ 128. Luster Rose fernery - amber - roughness on roses on outside of fernery
- \_\_\_ 129. Luster Rose fernery - clambroth - this version has the plain interior
- \_\_\_ **130. Fenton's Peacock at Urn ruffled bowl - marigold on moonstone - very rare bowl and a super example**
- \_\_\_ 131. Ripple 9" vase - purple - 3 3/8" base
- \_\_\_ 132. Australian Kangaroo lg ruffled bowl - purple
- \_\_\_ 133. Good Luck PCE bowl w/ribbed back - green
- \_\_\_ 134. Good Luck PCE bowl w/ribbed back - marigold - dark
- \_\_\_ 135. Good Luck PCE bowl w/ribbed back - marigold - pastel
- \_\_\_ 136. Fruits & Flowers 7" plate - purple - nice

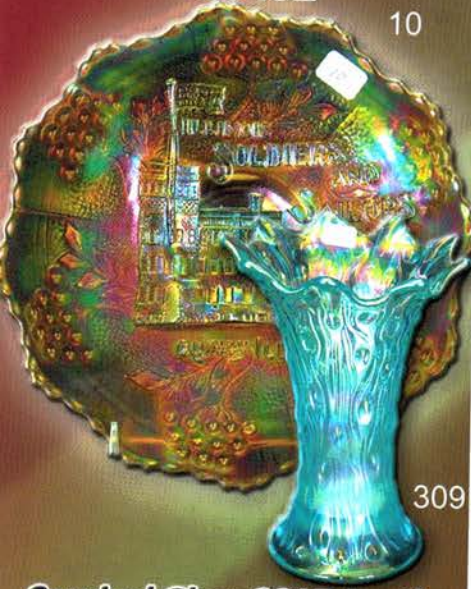
- \_\_\_ 137. Fruits & Flowers 7" plate - marigold - pretty
- \_\_\_ **138. Grape & Cable banana boat - ice blue - scarce & very nice**
- \_\_\_ **139. Grape & Cable banana boat - ice green - scarce & very nice**
- \_\_\_ 140. Grape & Cable banana boat - purple - cracked
- \_\_\_ 141. Grape & Cable banana boat - marigold - nice
- \_\_\_ 142. Windmill ruffled bowl - purple - very pretty
- \_\_\_ 143. Windmill ruffled bowl - smoke - also pretty
- \_\_\_ 144. Diving Dolphins ftd rose bowl - amethyst - chip on foot
- \_\_\_ **145. Stippled Three Fruits ruffled bowl w/ribbed back - aqua opal - scarce, very nice**
- \_\_\_ 146. Dragon & Lotus 3 in 1 edge bowl - amethyst, pretty
- \_\_\_ 147. Leaf Chain 9" plate - marigold - nice
- \_\_\_ 148. Springtime spooner - green
- \_\_\_ 149. Springtime spooner - purple
- \_\_\_ **150. Poppy Show vase - smoke - very pretty vase, very rare, a dandy!**
- \_\_\_ **151. Poppy Show vase - marigold - scarce**
- \_\_\_ **152. Poppy Show vase - purple - an extremely rare color to find in this vase, chip off top edge**
- \_\_\_ 153. Poppy Show vase - plum opal - not sure of exact color name, contemporary
- \_\_\_ 154. Poppy Show vase - Burmese - contemporary
- \_\_\_ 155. Poppy Show vase - pink opaque - contemporary
- \_\_\_ 156. Poppy Show vase - white - has smooth top, marked IG
- \_\_\_ 157. Poppy Show vase - frosted w/poppies unfrosted - old vase, non iridized
- \_\_\_ 158. Poppy Show vase - red - contemporary
- \_\_\_ 159. Poppy Show vase - vaseline opal - contemporary
- \_\_\_ 160. Poppy Show vase - blue - contemporary
- \_\_\_ 161. Poppy Show vase - aqua opal - 100th anniversary, contemporary
- \_\_\_ 162. Poppy Show vase - green opaque - contemporary
- \_\_\_ **163. Dragon & Strawberry ruffled bowl - marigold - scarce, pretty**
- \_\_\_ 164. M'burg Little Stars low 7" IC shaped bowl - green - satin, they tried to make this a plate
- \_\_\_ 165. Corn bottle - smoke - top has been slightly polished
- \_\_\_ 166. Corn bottle - green
- \_\_\_ **167. Concord ruffled bowl - green**
- \_\_\_ 168. Concord ruffled bowl - marigold - nice
- \_\_\_ 169. Miniature Morning Glory 4 1/2" vase - purple - pretty and cute!
- \_\_\_ 170. Miniature Morning Glory 6" vase - smoke - cracked
- \_\_\_ **171. Hearts & Trees ftd ruffled master berry bowl - marigold - scarce**
- \_\_\_ **172. Stippled Basket of Roses bonbon - purple - scarce**
- \_\_\_ 173. M'burg Primrose ruffled bowl - marigold - radium, nice, chip on edge
- \_\_\_ 174. Butterfly & Tulip banana boat shaped ftd bowl - marigold
- \_\_\_ **175. Good Luck 9" plate w/BW back - green - nice**
- \_\_\_ 176. Good Luck 9" plate w/BW back - purple - nice
- \_\_\_ **177. Drapery 8" vase - green - very scarce color for these**
- \_\_\_ 178. Drapery 7" vase - blue - super pretty, chip on foot
- \_\_\_ 179. Drapery 8" vase - purple - nice, pinpoint on foot
- \_\_\_ 180. Drapery 7 1/2" vase - ice green - nick on foot
- \_\_\_ 181. Drapery 7 1/2" vase - ice blue
- \_\_\_ 182. Drapery 8 1/2" vase - white
- \_\_\_ 183. Wishbone epergne base - lime green - who has the lily?
- \_\_\_ **184. Leaf Columns 9 1/2" vase - sapphire - nice, scarce color**
- \_\_\_ 185. Orange Tree 8 pc. punch set - blue - one cup with chip
- \_\_\_ 186. M'burg Sunflower pin tray - green - very scarce, nick on back of leaf
- \_\_\_ **187. M'burg Sunflower pin tray - amethyst - very scarce**
- \_\_\_ 188. M'burg Sunflower pin tray - marigold - light color, few small chips on inner rim of base, rarest color
- \_\_\_ **189. Double Stemmed Rose dome ftd ruffled bowl - purple - very pretty**
- \_\_\_ 190. Double Stemmed Rose dome ftd ruffled bowl - white - nice
- \_\_\_ **191. Acorn Burrs 8 pc. punch set - marigold - scarce, highly desirable**
- \_\_\_ 192. Acorn Burrs punch bowl & base - white - rare set, point chipped off and glued on
- \_\_\_ **193. Apple Tree water pitcher - blue - very scarce pitcher and super pretty!**
- \_\_\_ **194. Peacocks 9" plate w/plain back - green - very pretty for these**
- \_\_\_ **195. Peacocks 9" plate w/ribbed back - purple - very nice**
- \_\_\_ 196. Peacocks 9" plate w/ribbed back - lavender - scarce, nice
- \_\_\_ 197. Peacocks 9" plate w/ribbed back - ice green
- \_\_\_ 198. Peacocks 9" plate w/ribbed back - marigold - nice
- \_\_\_ 199. Grape & Cable pin tray - marigold - nice
- \_\_\_ **200. Lovely tri-cornered ftd bowl - purple - very rare bowl & nice**
- \_\_\_ 201. Enameled Cherries ftd ruffled bowl - peach opal
- \_\_\_ 202. Windmill 9" deep round bowl - smoke - nice
- \_\_\_ **203. M'burg Peacock at Urn 6" plate - amethyst - satin, very scarce**
- \_\_\_ 204. Stippled Strawberry PCE bowl w/ribbed back - marigold - scarce
- \_\_\_ **205. Captive Rose 9" plate - green - scarce color**
- \_\_\_ 206. Enameled Ski Star dome ftd handgrip plate - peach opal
- \_\_\_ **207. Drapery rose bowl w/smooth edge - white - super nice, scarce**

- \_\_\_ **208. Drapery rose bowl - green - tough color, very nice**
- \_\_\_ 209. Drapery rose bowl - blue - very pretty
- \_\_\_ 210. Drapery rose bowl - purple - nice
- \_\_\_ 211. Drapery rose bowl - marigold - nice
- \_\_\_ 212. Drapery rose bowl - aqua opal - nice
- \_\_\_ **213. Six Sided candlesticks - marigold - scarce, nice**
- \_\_\_ **214. Tree Trunk 12 1/2" mid-size vase w/plunger base - purple - very scarce vase & nice for these**
- \_\_\_ 215. Wild Rose open edge ftd bowl - marigold - very pretty
- \_\_\_ 216. Good Luck PCE bowl w/BW back - marigold
- \_\_\_ 217. Little Flowers 10" CRE bowl - amethyst - nice
- \_\_\_ 218. M'burg Rays & Ribbons ruffled bowl - green - radium, small crack in interior near center
- \_\_\_ 219. Tree Trunk 18" funeral vase - purple - has point broken off, crack off of point, we have the point, no, Jim did not do this
- \_\_\_ 220. Poppy Show 9" plate - marigold - chips on poppies
- \_\_\_ 221. Gothic Arches 10" vase - smoke - very scarce vase, large open bubble on base
- \_\_\_ 222. Strawberry Scroll water pitcher - marigold - handle has been completely repaired
- \_\_\_ 223. Stippled Good Luck ruffled bowl w/ribbed back-renninger blue - super pretty example, pinpoint on edge, also, between point roughness
- \_\_\_ 224. Horse Medallion 7" ftd IC shaped bowl - green - very pretty, slight manufacture roughness on points
- \_\_\_ 225. Horse Medallion 7" ftd IC shaped bowl - marigold - nice
- \_\_\_ **226. Poinsettia & Lattice ftd ruffled bowl - purple - scarce**
- \_\_\_ 227. Little Barrel - smoke - nice
- \_\_\_ 228. Three Fruits dome ftd ruffled bowl - white
- \_\_\_ 229. Pinecone 6" plate - amethyst - nice
- \_\_\_ 230. Pinecone 6" plate - blue - nice
- \_\_\_ **231. Peacock at the Fountain ruffled compote - marigold - scarce, nice**
- \_\_\_ 232. Wishbone ftd ruffled bowl - green - pretty, chip on point
- \_\_\_ 233. Wishbone ftd ruffled bowl - blue - has electric highlights
- \_\_\_ 234. Hobstar & Fruit banana boat shaped dish - peach opal
- \_\_\_ 235. Smooth Panels 11" vase - smoke
- \_\_\_ 236. Dragon & Lotus ruffled bowl - marigold - beautiful
- \_\_\_ **237. Oriental Poppy tankard water pitcher - purple - nice**
- \_\_\_ 238. Enameled Single Flower 3 in 1 edge bowl - peach opal
- \_\_\_ 239. M'burg Nesting Swan ruffled bowl - amethyst - satin, some irid. spots in center of bowl
- \_\_\_ 240. M'burg Nesting Swan ruffled bowl - marigold - radium, nice, chip on edge
- \_\_\_ **241. Greek Key PCE bowl w/BW back - green - scarce**
- \_\_\_ 242. Persian Garden 6" plate w/Pool of Pearls back - white
- \_\_\_ 243. Enameled Columbine 5 pc. water set - marigold
- \_\_\_ 244. Folding Fan flared out compote - blue opal - minor pinpoint on base, nice
- \_\_\_ 245. Folding Fan IC shaped compote - marigold on moonstone
- \_\_\_ 246. Rose Show 9" plate - marigold - chip on rose
- \_\_\_ 247. Vintage 3 in 1 edge 10" bowl - blue
- \_\_\_ 248. Freefold 13" vase - smoke
- \_\_\_ 249. Four Flowers 10" ruffled bowl - peach opal - nice
- \_\_\_ **250. Double Dutch ftd rose bowl whimsey - clambroth - have very pretty irid., only one I've seen, has large chip on foot**
- \_\_\_ 251. M'burg Hanging Cherries master IC shaped bowl - green - chip in pattern
- \_\_\_ 252. M'burg Hanging Cherries master IC shaped bowl - amethyst - satin
- \_\_\_ 253. Featherstitch low IC shaped bowl - marigold - close to a plate
- \_\_\_ 254. Pond Lily card tray shaped bonbon - white
- \_\_\_ **255. Ripple 18" funeral vase - purple - very scarce, very nice**
- \_\_\_ 256. Grape & Cable candlestick - marigold
- \_\_\_ 257. N's Grape Leaves 3 in 1 edge bowl - green - pretty
- \_\_\_ 258. Imperial Grape wine bottle w/stopper - purple - nick on bead of stopper
- \_\_\_ 259. Double Scroll candlestick - teal
- \_\_\_ 260. Triple Alliance cracker jar w/metal top - marigold - Brockwitz
- \_\_\_ 261. Beaded Bullseye 10" vase - purple
- \_\_\_ 262. Hearts & Flowers ruffled bowl w/ribbed back - marigold - nice
- \_\_\_ 263. M'burg Peacock IC sauce - amethyst - satin
- \_\_\_ **264. Nippon 9" plate w/BW back - marigold - very hard to find plate**
- \_\_\_ 265. Windmill round sauce - smoke
- \_\_\_ 266. M'burg Peacock at Urn 3 in 1 edge Mystery bowl - marigold - satin
- \_\_\_ 267. Leaf & Beads rose bowl - blue
- \_\_\_ 268. Leaf & Beads rose bowl - green - nice
- \_\_\_ 269. Leaf & Beads rose bowl - marigold
- \_\_\_ **270. Question Mark ftd plate - purple - pretty, scarce**
- \_\_\_ 271. Acanthus chop plate - marigold
- \_\_\_ **272. Daisy Web tri-cornered crimped edge hat - purple - rare shape**
- \_\_\_ **273. Daisy Web JIP crimped edge hat - marigold - very pretty**
- \_\_\_ 274. Pinecone 7" plate - amethyst
- \_\_\_ 275. Stippled Good Luck PCE bowl w/ribbed back - marigold - pretty
- \_\_\_ 276. M'burg Little Stars 7" ruffled bowl - amethyst - satin, missing irid. in center

- \_\_\_ 277. M'burg Little Stars 7" ruffled bowl - marigold
- \_\_\_ **278. Lovely ftd round flared bowl - green - very scarce, nice**
- \_\_\_ 279. Lacy Dewdrop cvd compote - marigold on milk glass
- \_\_\_ **280. Daisy & Drape turned in vase - marigold**
- \_\_\_ **281. Daisy & Drape turned in vase - white**
- \_\_\_ **282. Imperial Grape 9" plate - amber - scarce color**
- \_\_\_ 283. Blackberry Spray JIP CRE hat - aqua - crack around base
- \_\_\_ **284. Enameled Forget Me Not tankard water pitcher with plain black - marigold - scarce pitcher & pretty**
- \_\_\_ 285. Ripple 13" vase - purple - 3 3/8" base
- \_\_\_ 286. Embroidered Mums ruffled bowl w/ribbed back - marigold - nice
- \_\_\_ 287. M'burg Whirling Leaves ruffled bowl - green - radium
- \_\_\_ 288. Fenton Peacock at Urn IC shaped bowl - green - nice
- \_\_\_ 289. Hearts & Flowers ruffled compote - white
- \_\_\_ 290. Feather Stitch ruffled bowl - green - silvery
- \_\_\_ 291. Strawberry PCE bowl w/plain back - marigold - dark, nice
- \_\_\_ 292. Strawberry PCE bowl w/plain back - pastel marigold - nice
- \_\_\_ **293. Thin Rib mid-size 12 1/2" mid-size vase - lime green - very rare color, nice**
- \_\_\_ 294. Dandelion mug - aqua opal
- \_\_\_ 295. Dandelion mug - marigold - dark, nice
- \_\_\_ **296. Stippled Grape & Cable Variant ruffled bowl w/ribbed back - green - pretty**
- \_\_\_ 297. Hearts & Flowers ruffled compote - marigold - nice, center flower is covered with yellow irid.
- \_\_\_ 298. Double Dutch ftd ruffled bowl - smoke - nice
- \_\_\_ 299. Windflower turned in rose bowl shape - marigold - turned in like a rose bowl, unusual shape
- \_\_\_ **300. Rose Show Variant 9" plate w/ribbed back - renninger blue - rare plate, nice**
- \_\_\_ 301. Windmill ruffled sauce - clambroth - pretty
- \_\_\_ 302. Inverted Feather cracker jar - green
- \_\_\_ 303. Good Luck ruffled bowl w/ribbed back - pastel marigold - very nice look
- \_\_\_ **304. Twigs 4 1/4" JIP CRE miniature vase - purple - nice**
- \_\_\_ 305. Circle Scroll ruffled hat - marigold
- \_\_\_ 306. Three Fruits Medallion spt ftd ruffled bowl - purple - pretty
- \_\_\_ 307. Palm Beach 7" plate - goofus - no irid. on the face, irid. on the grapes and leaves on the back
- \_\_\_ 308. Three Fruits PCE bowl w/plain back - lime green - rare color
- \_\_\_ **309. Tree Trunk 7" squatty vase - ice blue - super nice irid., very scarce**
- \_\_\_ 310. M'burg Holly Whirl ruffled bowl - marigold - radium
- \_\_\_ **311. Apple Blossom Twigs 9" plate - purple**
- \_\_\_ **312. Peacock Tail IC shaped sauce - peach opal - very rare sauce**
- \_\_\_ 313. Wishbone 10" PCE bowl - green - nice
- \_\_\_ 314. Blossomtime ruffled compote - marigold - several chips inside of bowl
- \_\_\_ 315. Freefold 12 1/2" vase - purple
- \_\_\_ **316. Eat Paradise Sodas 6" advertising plate - amethyst - nice**
- \_\_\_ 317. M'burg Seaweed 10" 3 in 1 edge bowl - marigold - nice
- \_\_\_ 318. Scroll Embossed 9" ruffled bowl w/File back - purple - pretty, has a couple of very small irid. spots towards center
- \_\_\_ 319. Singing Birds mug - purple - fantastic!
- \_\_\_ 320. M'burg Peacock at Urn 10" ruffled bowl - marigold - satin
- \_\_\_ 321. M'burg Many Stars 3 in 1 edge bowl - green - radium, nice, 5 point star version, minor heat check in base
- \_\_\_ 322. Orange Tree w/trunk 9" plate - white - nice
- \_\_\_ **323. Homestead chop plate - amber - super pretty, great mold work, rare**
- \_\_\_ **324. Homestead chop plate - purple - very scarce, nice**
- \_\_\_ **325. NUART Homestead chop plate - white - pretty, has some slight stretchy irid.**
- \_\_\_ **326. NUART Homestead chop plate - marigold - nice**
- \_\_\_ 327. Several Box lots of Carnival Glass

**Seeck Auctions**  
**PO Box 377**  
**Mason City, Iowa**  
**50402**

PRESORTED  
 FIRST CLASS MAIL  
 US POSTAGE  
 PAID  
 MAIL EXPEDITORS



10

309

**Carnival Glass 2015 Auction**  
**Sat., June 6 9:30 a.m.**  
**Best Western Airport Hotel**  
**Milwaukee, Wis.**

T3 P1 540  
 LEE MARKLEY  
 BOX 306  
 MENTONE IN 46539-0306



324

23

62 a.

300

200

124

100

50

53

193

250

130