

# Keystone Carnival Glass Convention 2015

May 6th 7th 8th 9th ( auction on the 9th at 9:30 AM )

Holiday Inn - Grantville, PA.

604 Station Road Grantville, Pennsylvania 17028

For reservations please call 717.469.0661

Directions off of I- 81: Hershey Exit # 80 off of I-81 North or South .  
Approx 20 miles north of Harrisburg PA

For more information or help with anything happening with the convention  
please contact Sharon Royle at don6379@verizon.net

Please register early so the club to make all arrangements. You can send your  
registration in to: Elaine Szebin 508 E. Marble St Mechanicburg, PA 17055

Friday evening Banquet is \$30.00 per person and registration is only \$5.00!  
(just 35.00 bucks for the weekend!) You can also join the club for \$10.00 *per family!*

The folks and officers at the Keystone Club ALWAYS provide an enjoyable  
convention. We hope to see you there! Bring your kids or grandkids,  
Hershey park just down the road!

This years auction will feature glass from the Bergman Collection

\*\*\*\*\*Mail, E-Mail, Phone and Absentee Bids Policy:\*\*\*\*\*

**Absentee Bidding:** Absentee bidding is available via our "Auction Flex" bidding system. You may also email us, or mail your absentee bids. You can also do "live phone" bids. Just give us a call at 937.548.7835 or 716.526.4230 to set up your item schedule. Remember, call early as we have 2 lines available per item. There is a \$7.00, per successful bid, convenience fee. Items will be shipped within 5 days after payment is received. We reserve the right to cancel ANY bid for ANY reason. We will cancel all bids on an item if damage is found during the auction. If you do not hear from us by Tuesday following week, you did not win.

**Terms & Conditions:** Cash, Travelers checks, business or personal checks w/I.D. Visa/ MC & Discover with a 3% clerking fee. We reserve the right to withdraw any damaged item from the auction before the bidding starts.

## Jim Wroda Auctions

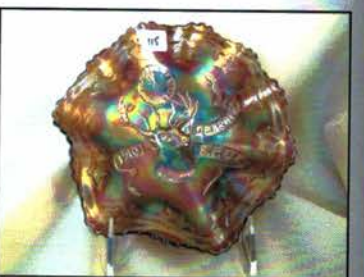
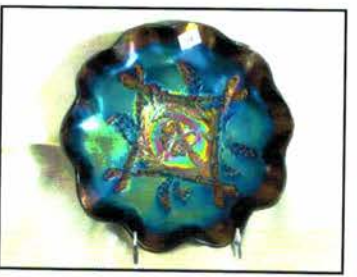
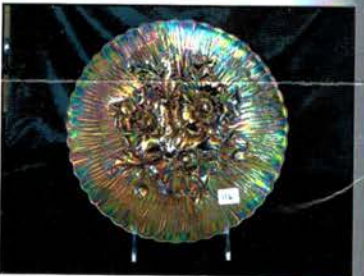
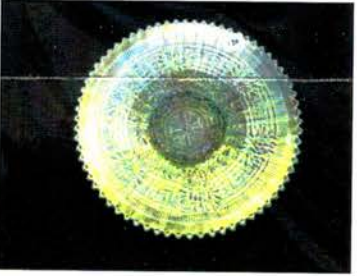
5239 ST RT 49 S. Greenville, Ohio 45331

937.548.7835 OH Office

Email us: jimwroda@mac.com

Visit our website site for full weekend coverage at: [www.jimwrodaauction.com](http://www.jimwrodaauction.com)





**Come on over and  
join us at the  
Keystone Convention  
May 7-9th 2015  
Where conventions  
are relaxing and a  
good time!**

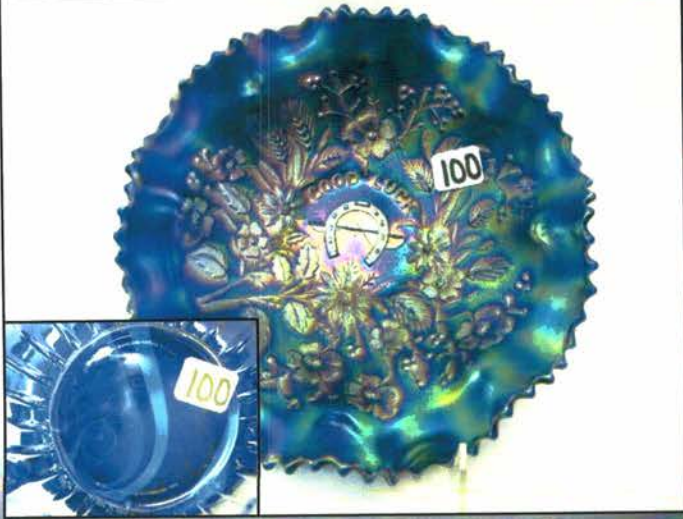
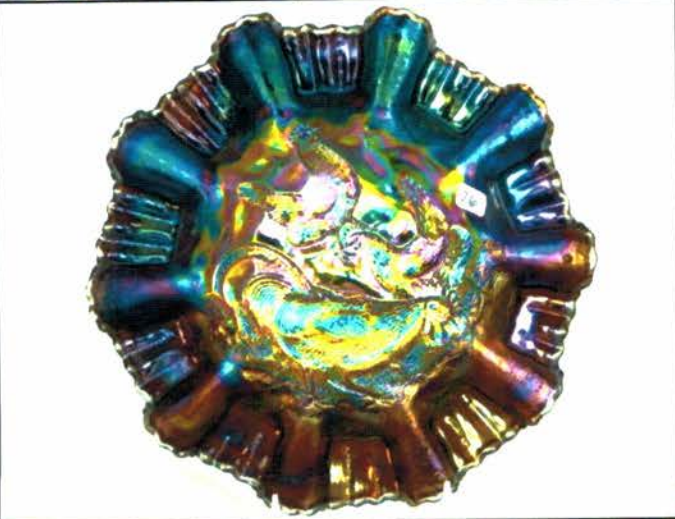
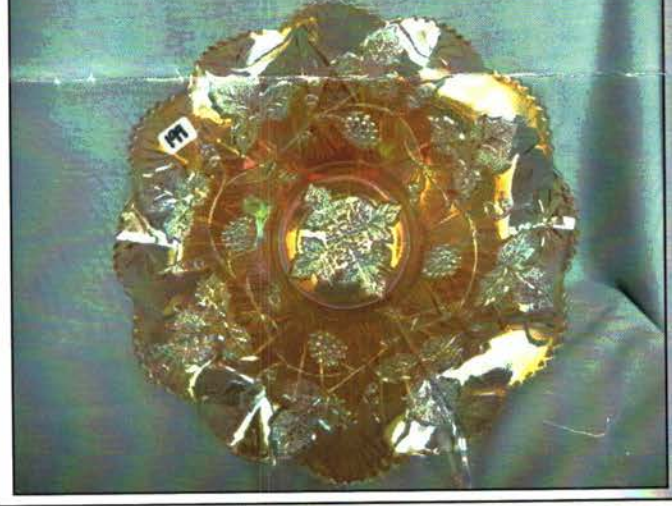
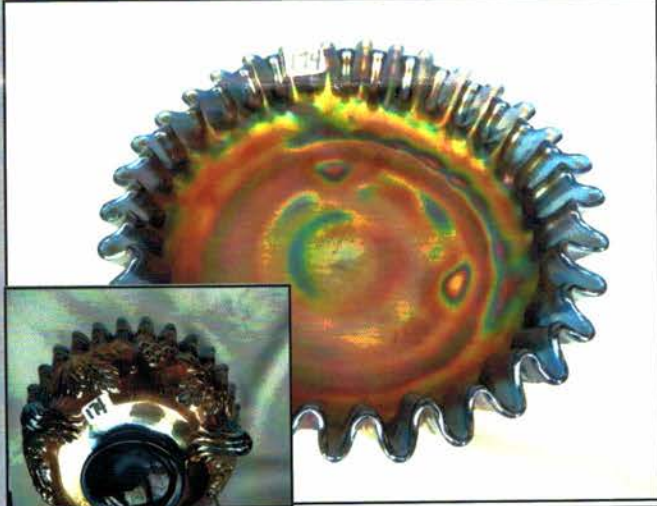
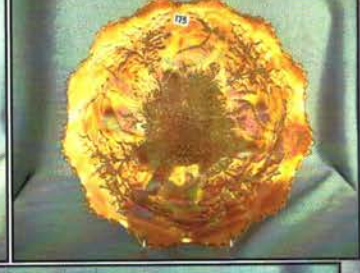
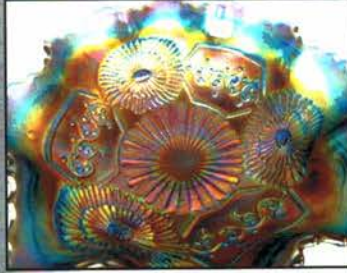
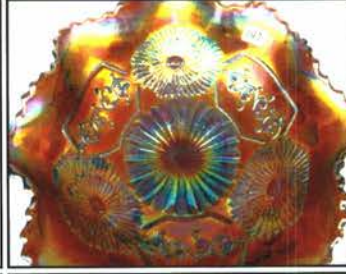
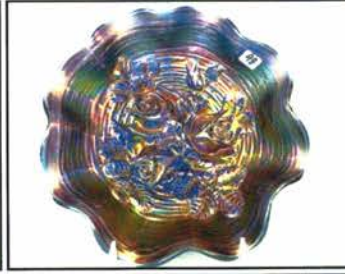
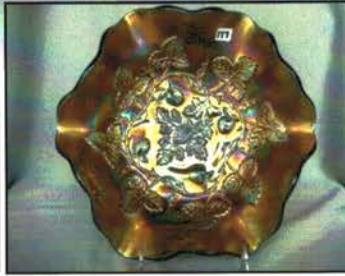
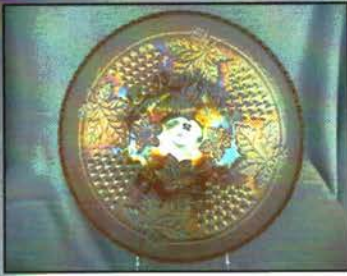
May 9, 2015 Keystone Carnival Glass Listing

|    |  |    |   |
|----|--|----|---|
| 1  | Imp. 9" elec. Purple Pansy 8-ruffle bowl. Super  | 37 | Dugan PO 6" Wishbone & Spades ruffled bowl. Very nice!  |
| 2  | Imp. 9" purple Pansy 8 ruffle bowl w/high bronze irid. Very nice!  | 38 | Dugan light PO 6" Wishbone & Spades ruffled bowl. Very nice!  |
| 3  | Imp. 9" amber Pansy 8 ruffle bowl.   | 39 | Dugan 9 1/2" PO Pulled Loops vase   |
| 4  | Imp. 9 1/4" smoke Pansy flared ruffled plate/low ruffled bowl. Great color!  | 40 | Dugan PO 7 1/2" Pinched Swirl vase w/Hyacinth top   |
| 5  | Imp. 9 1/4" pastel mari. Pansy flared ruffled plate/low ruffled bowl. Super sharp!   | 41 | Dugan 4 1/2" PO Pinched Swirl tri-corner spittoon shape vase.   |
| 6  | Imp. 11 1/2" Smoke Smooth Panels midsize vase. Fantastic dark color. 4 3/8" base   | 42 | Dugan 6" PO Pinched Swirl vase. Nice dark color!  |
| 7  | Imp. 14" light lavender Smooth Panels flared vase w/nice stretchy irid. 4 3/8" base  | 43 | Dugan 6" light PO Pinched Swirl twisted vase.   |
| 8  | Imp. 11" light lavender Smooth Panels vase w/nice rich irid. 4 3/8" base. Beautiful vase!  | 44 | Dugan 9" PO Ski Star hand grip plate w/bright irid!   |
| 9  | Imp. 8" light lavender Smooth Panels flared vase w/dark irid. 3 1/2" base  | 45 | Dugan 9" PO Apple Blossom Twigs 8 ruffled low bowl  |
| 10 | Imp. 9 1/2" dark mari. Smooth Panels flared midsize vase. As dark as you'll find them. 4 3/8" base w/top of 8".                        | 46 | Dugan 10" PO Garden Path Vt. Fruit bowl w/Soda Gold ext. Very sharp pressing!!!   |
| 11 | Imp. 11 1/2" dark mari. Smooth Panels vase.  | 47 | Dugan PO 8 1/2" Ski Star 10 ruffled dome footed bowl. What a great run of Peach Opal!!!!  |
| 12 | Imp. 8" teal Smooth Panels vase w/nice stretch effect. 3 1/2" base w/ 6" top.  | 48 | Dugan 10 3/4" elec purple Wishbone & Spades flat chop plate. Great color, great pressing. Always sought after.                            |
| 13 | Imp. 8 1/2" elec. Purple Grape ruffled bowl. Off the charts color!!!   | 49 | Dugan 9 3/4" purple Wishbone & Spades 8 ruffled bowl w/nice elec. Highlights! Pretty bowl!!!  |
| 14 | Imp. Grape elec. Purple goblet. Outstanding color!   | 50 | Dugan 9" purple Grape Arbor deep footed fruit bowl w/Inverted Fan & Feather Ext. Fairly scarce in purple!                                 |
| 15 | Imp. Grape mari. Goblet. Pretty!   | 51 | Dugan 9" mari. Grape Arbor deep footed fruit bowl w/Inverted Fan & Feather Ext. Nice bright crisp color!                                  |
| 16 | Imp. 5" mari. Grape ruffled compote  | 52 | Nwood 11" blasting pastel mari. G & C ICS bowl. Bright yellow irid!!  |
| 17 | Imp. 5" smoke Grape ruffled compote  | 53 | Nwood 11" IG G & C ICS bowl. Super nice!!   |
| 18 | Imp. 7" elec. Purple Scroll Embossed deep round bowl w/File ext. Super nice!   | 54 | Nwood 11" white G & C ICS bowl. Beautiful frosty pastel irid!   |
| 19 | Imp. Elec. Purple 13" Free Fold vase. Always a hit!  | 55 | Nwood 11" dark mari. G & C ICS bowl. Beautiful multicolor irid. Not common on this bowl.  |
| 20 | Imp. Mari. Loganberry carafe   | 56 | Nwood 11" green G & C ICS bowl. Nice rich base glass w/very nice color!   |
| 21 | Imp. Green Loganberry carafe. Very nice for this carafe!!  | 57 | Nwood 11" elec. Purple G & C ICS bowl. Brilliant color!   |
| 22 | Imp. 9" elec. Purple Scroll Embossed deep ruffled bowl w/File ext. Bright yellow irid!   | 58 | Nwood 11" blue G & C ICS bowl. Very nice!   |
| 23 | 9 1/2" amber Four Flowers Vt. Plate. Beautiful color. Base almost looks yellow!  | 59 | Nwood 11" purple G & C ICS bowl. Nice bright bronze irid!!!   |
| 24 | 9 1/2" emerald green Four Flowers Vt. Plate. Super nice!   | 60 | Nwood 11" white G & C ruffled master berry bowl. Scarce!  |
| 25 | 10" elec. Purple Four Flowers Vt. Low flared bowl.   | 61 | Nwood 11" brilliant elec. blue G & C ruffled master berry bowl. Wowser!!!!  |
| 26 | Dugan 10 3/4" elec purple Farmyard bowl with 3/1 edge. Bright yellow chickens and one of the best pressings we have seen! TOP SHELF!!! | 62 | Nwood 11" elec. purple G & C ruffled master berry bowl  |
| 27 | Dugan 11" elec purple Jeweled Heart bowl. Outstanding color!   | 63 | Nwood 11" green G & C ruffled master berry bowl. Scarce!  |
| 28 | Dugan elec. Purple Many Fruits 10 pc. Punch set. Gorgeous inside and out!!! WOW!! Cups are a close match                               | 64 | Nwood 11" pastel mari. G & C ruffled master berry bowl.   |
| 29 | Dugan 10" elec purple Spirolex vase.   | 65 | Nwood G & C purple G & C hat pin holder. Beautiful color on top.  |
| 30 | Dugan 11" PO Four Flowers chop plate w/plain back. Beautiful radium multicolor irid.   | 66 | Nwood G & C green G & C hat pin holder. Nice bright color and great pressing  |
| 31 | Dugan 8 1/4" PO Stippled Petals hand enameled flared bowl  | 67 | Nwood G & C super elec. G & C purple hat pin holder. Beautiful color. Does have a stress line by one flute. Color will take care of that. |
| 32 | Dugan 7 3/4" PO Stippled Flower hand enameled low ruffled bowl. Beautiful enameling!   | 68 | Nwood beautiful purple Blossom Time compote   |
| 33 | Dugan 10 3/4" PO Ski Star 8 ruffled deep bowl. Beautiful for this!   | 69 | Nwood pastel mari. Blossom Time compote   |
| 34 | Dugan 10" PO Petal & Fan deep bowl. Very hard to find.   | 70 | Nwood AO Leaf & Beads rosebowl.   |
| 35 | Dugan 10 3/4" PO Jeweled Heart 8 ruffled bowl. Nice dark color.  | 71 | Nwood blue w/elec. highlights Leaf & Beads rosebowl   |
| 36 | Dugan PO 6" Wishbone & Spades flat plate. Gorgeous!  | 72 | Nwood AO Drapery rosebowl.  |
|    |  | 73 | Nwood purple w/beautiful elec. Highlights Drapery rosebowl  |
|    |  | 74 | Nwood light amy./lavender Drapery rosebowl. Scarce color!   |
|    |  | 75 | Nwood mari. G & C whimsy pin tray made from punch cup   |

- 76 Nwood 6" white G & C ICS bowl
- 77 Nwood 6" IG G & C bowl
- 78 Nwood light mari. G & C pin tray
- 79 Nwood mari. G & C dresser tray
- 80 Nwood mari. G & C powder tray
- 81 Nwood bright mari. G & C candlesticks. Well matched!
- 82 2 Nwood purple G & C candlesticks. Selling choice!
- 83 Nwood AO round Bushel Basket. Super pretty!
- 84 Nwood blue round Bushel Basket. Very nice.
- 85 Nwood purple round Bushel Basket.
- 86 Nwood beautiful green round Bushel Basket
- 87 Nwood light mari. Round Bushel Basket
- 88 Nwood blue w/dark bronze irid. Round Bushel Basket
- 89 Nwood mari. 8 sided Bushel Basket
- 90 Nwood white 8 sided Bushel Basket
- 91 Nwood 9" Ice Green opal Rose Show plate. Extremely rare beautiful plate! Hardly ever sold! Here's your chance!
- 92 Nwood 9" elec. Blue Rose Show plate. Beautiful multicolor irid. On a scarce plate.
- 93 Nwood 9" frosty white Rose Show plate.
- 94 Nwood 9" dark mari. Poppy Show plate. Nice dark color!
- 95 Nwood 8 1/2" AO Rose Show bowl
- 96 Nwood 8 1/2" dark pumpkin mari. Rose Show bowl
- 97 Nwood 8 1/2" blue opal Rose Show bowl. Not Carnival.
- 98 Nwood 8 1/2" blue Rose Show bowl. Deep cobalt!
- 99 Nwood 8 1/2" purple Poinsettia & Lattice footed bowl. Such a beautiful pattern!
- 100 Nwood 8.5" blue Good Luck ruffled bowl with white slag streak running through bowl. This bowl is one of the last pieces from the late Casey Rich collection. Casey and Aaron partnered on this bowl several years ago and is now time to sell it.
- 101 Nwood 8.5" AO 3 Fruits Medallion bowl. Very sweet lookin bowl
- 102 Fenton 7" RED Vintage bowl. LOOKS RED!
- 103 Nwood 10" BLUE Peacock at Urn stippled MIC bowl RARE and nice!
- 104 Nwood 8.5" blue Good Luck ruffled bowl Beautiful bowl
- 105 Nwood 9" purple Peacocks plate w/ nice elec hi-lights. very pretty plate
- 106 Nwood 9" elec blue Peacocks PCE bowl WOW!!
- 107 Nwood 9" BLUE Hearts & Flowers PCE bowl. Very hard to find bowl in blue.
- 108 Nwood 8.5" GREEN Peacocks ruffled bowl. Very scarce bowl
- 109 Dugan 8" purple Fanciful plate.
- 110 Nwood 6.5" elec purple Thin Wide Rib squatty vase,
- 111 Imp 12" elec purple Beaded Bulls eye vase Sweet!
- 112 Imp 10" mari Hattie chop plate WOW!! good lookin piece of mari!
- 113 RARE Nwood 9" SAPPHIRE 3 Fruits plate VERY RARE COLOR! Nice
- 114 Dugan 9" elec purple Apple Blossom Twigs plate. HOLY HOTTIE!!
- 115 Fenton 7" amy Detroit Elks ruffled bowl. SUPER!
- 116 Nwood 9" BLUE Poppy SHow plate with beautiful elec color. Here's a good one.. Scarce
- 117 Nwood 9" IB Poppy SHow Plate. VERY hard to find plate, very pastel
- 118 Imp Grape 9" elec purple plate! RARE!!
- 119 Dugan 8.5" ICE LAVENDER Apple Blossom Twigs bowl. Very rare!
- 120 Nwood IG Embroidered Mums plate. RARE and Pretty
- 121 Dugan 9" purple Round Up plate. Scarce.
- 122 Fenton 9" Peacock at Urn white plate. Frosty
- 123 Nwood 8.5" IB Embroidered Mums ruffled bowl Very pretty bowl
- 124 Fenton 7.5' Aqua/teal Persian Medallion plate. Rare size and color.
- 125 Nwood BLUE Wild Rose candy dish points out Very Scarce candy bowl.
- 126 Nwood 8 3/4" purple Greek Key ruffled bowl
- 127 Nwood 8 3/4" mari. Greek Key ruffled bowl
- 128 Nwood 9" elec. Purple Three Fruits plate w/plain back. Fabulous!
- 129 Nwood 9" mari. Three Fruits stippled plate. Outstanding!
- 130 Nwood 8 1/2" bright mari. Three Fruits Vt. Stippled bowl
- 131 Nwood 8 1/2" bright mari. Three Fruits stippled bowl
- 132 Nwood 9" purple Three Fruits plate w/BW back
- 133 Nwood 8 1/2" pastel mari Poinsettia & Lattice footed bowl. Fantastic pressing!
- 134 Nwood 8 1/2" pastel mari. Three Fruits stippled bowl
- 135 Nwood 8 1/2" elec. Green Three Fruits ruffled bowl w/plain back. Great color!!
- 136 Nwood 8 1/2" mari. Three Fruits PCE bowl w/BW back.
- 137 Nwood 8" green Fruits & Flower dome footed bowl. Scarce!
- 138 Fenton Persian blue miniature Blackberry stemmed plate. Not Carnival
- 139 Fenton blue miniature Blackberry stemmed plate. Minute flick on point. Just mentioning
- 140 Fenton blue miniature Blackberry stemmed compote
- 141 Fenton white miniature Blackberry stemmed compote
- 142 Fenton green miniature Blackberry stemmed compote
- 143 Fenton mari miniature Blackberry stemmed compote
- 144 Fenton 6" blue Sailboats ruffled sauce
- 145 Fenton 6" green Sailboats ruffled sauce
- 146 Fenton bright mari Persian Medallion hair receiver w/square top
- 147 Fenton elec. Purple Mikado ruffled compote. As pretty as you will find a purple one!
- 148 Fenton lavender Mikado ruffled compote. Rare color!
- 149 Fenton dark rich green Mikado ruffled compote. Very rare color!
- 150 Fenton blue w/elec highlights Mikado ruffled compote. Very nice compote
- 151 Fenton 9 1/2" PINK Holly plate. Extremely rare. First reported true pink!!!
- 152 Fenton 9 1/2" green Holly plate. Very nice w/fantastic pressing!
- 153 Fenton 9 1/2" purple Holly plate. Rare color!
- 154 Fenton 9 1/2" dark mari Holly plate
- 155 Fenton 9 1/2" blue Holly plate
- 156 Fenton 9 1/2" pastel mari Holly plate

- 157 Fenton 9 1/2" bright white Holly plate
- 158 Fenton 8 1/2" elec blue Holly ICS bowl. As good as you'll ever find
- 159 Fenton 8 1/2" green Holly ICS bowl. Very hard to find!
- 160 Fenton 8 1/2" amber Holly ICS bowl.
- 161 Fenton 8 1/2" bright white Holly ICS bowl
- 162 Fenton 7 1/2" blue Holly deep ICS bowl w/tips that turn in to a rosebowl shape! Really cool piece!!
- 163 Fenton 9 1/4" blue Peacock at Urn plate.
- 164 Fenton 9 1/4" dark mari. Peacock at Urn plate.
- 165 Fenton 9 1/4" bright white Peacock at Urn plate. Beautiful blue irid.
- 166 Fenton 9" mari. Peacock and Grape plate w/multicolor irid.
- 167 Fenton 9" blue Plaid ruffled bowl. Scarce and very nice!
- 168 Fenton 8" mari. Plaid ICS bowl. Another beauty!
- 169 Fenton 9 1/2" purple Cherry Chain ICS bowl. Rare color!
- 170 Fenton 9 1/2" frosty white Cherry Chain ICS bowl.
- 171 Fenton 9 1/2" clambroth Cherry Chain ICS bowl.
- 172 Fenton 9 1/2" blue Cherry Chain ICS bowl
- 173 Fenton 12" mari. Stag & Holly footed chop plate
- 174 Fenton blue Vintage CRE ferner. Extremely rare. Only one reported in blue as far as we know. Only one reported in amethyst. Very nice color. The only footed CRE item Fenton produced
- 175 Fenton 6 1/2" G & C nut bowl in reverse PO. PO tips w/PO collar base. Super rare!
- 176 Rare Mburg purple Hobstar & Feather 8 pc. Punch set w/Fleur-de-lys interior. Super radium interior. This set is hardly ever available for sale.
- 176a 2 Purple Hobstar & Feather punch cups
- 176b 10 RARE GREEN Hobstar & Feather punch cups When do you ever see 10 of these for sale!!
- 177 Mburg 10 1/2" blue Blackberry Wreath ruffled bowl. Much darker blue than normal for this bowl.
- 178 Mburg 8 1/2" mari Big Fish 3/1 edge bowl. Rare!
- 179 RARE Mburg green 6 1/2" Bulls Eye & Loop squatty vase. They don't come much smaller than that
- 180 Mburg 10 1/2" radium purple Bulls Eye & Loop vase.
- 181 Mburg 6 1/2" radium green Poppy flared compote. Very nice!
- 182 Mburg 6 1/2" mari Poppy flared compote
- 183 Mburg 8" mari Trout & Fly square bowl. Very tough to find!
- 184 Mburg 9" radium mari Whirling Leaves tri-corner CRE bowl
- 185 Mburg 9" radium pastel mari Peacock at Urn ICS bowl w/tips turned in. No bee, No beads. This bowl is much harder to find than the purple. You're gonna love it!!!
- 186 Mburg 10" mari Peacock at Urn MIC bowl in satin. Bee, No Beads
- 187 Mburg 10" green Peacock at Urn MIC bowl in satin. Bee, No Beads
- 188 Mburg 10" purple Peacock at Urn MIC bowl in satin. Bee, No Beads
- 189 Mburg 8 1/2" purple Big Fish ICS bowl. Rare!
- 190 Mburg 9" purple Trout & Fly ruffled bowl
- 191 Mburg 10" mari Peacock at Urn ruffled bowl. Bee, no beads.
- 192 Mburg 9 1/2" radium purple Hanging Cherries ICS bowl. Very scarce!
- 193 Mburg 10" purple Hanging Cherries ICS bowl.
- 194 Mburg 10" green Hanging Cherries ICS bowl
- 195 Mburg 10" mari Hanging Cherries ICS bowl
- 196 Mburg 10" mari Seaweed 3/1 edge bowl. Tough bowl to find.
- 197 Mburg 10" radium green Whirling Leaves ruffled bowl.
- 198 Mburg 10" purple Whirling Leaves ruffled bowl. Very pretty!
- 199 Mburg 10" radium mari Grape Leaves ruffled bowl. Great lookin' bowl!
- 200 Mburg 7" mari. Hanging Cherries flared ICS bowl.
- 201 Mburg 7" green Little Stars ICS bowl
- 202 Mburg 8 3/4" mari. Little Stars 3/1 edge bowl. Rare size
- 203 Mburg radium purple Hobnail Swirl Spittoon. Rare!
- 204 Mburg radium mari. Hobnail Swirl Spittoon. Rare and really dark color!
- 205 Mburg radium purple Hobnail Spittoon
- 206 Mburg radium mari. Hobnail Spittoon. Four really nice Millersburg spittoons for you!!!
- 207 Mburg 9 1/2" radium green Hobnail Swirl vase. Very scarce!
- 208 Mburg 9 1/2" radium purple Hobnail Swirl vase. Very scarce!
- 209 Mburg 9" radium mari. Hobnail Swirl vase. Scarce.
- 210 Mburg 9 1/2" radium purple Rays & Ribbons CRE ruffled bowl. WOW!!!!
- 211 Mburg 9" radium mari Zig Zag tri-corner bowl w/CRE. Rare!
- 212 Mburg 8 3/4" purple Big Fish 3/1 edge bowl. Very hard to find.
- 213 Mburg 9" radium purple Trout & Fly 6-ruffle bowl. Stunning!
- 214 Mburg 9" green Trout & Fly 3/1 edge bowl. Very scarce color!
- 215 Mburg 6" radium mari Holly Sprig ruffled bowl w/jetting points. Great shape!
- 216 Mburg 5" radium mari. Strawberry Wreath Vt. CRE bowl. Super cutie!!
- 217 Mburg 6" radium purple Blackberry Wreath ICS bowl. Another cute one!
- 218 Mburg radium purple Holly Sprig Spade Shape nappy. Scarce!
- 219 Mburg 9" radium green Strawberry Wreath Vt. Diamond shape CRE bowl. Super rare true diamond shape!
- 220 Mburg 9 3/4" radium purple Strawberry Wreath ruffled bowl. Beautiful!
- 221 Extremely Rare Nwood blue stained Custard 12" elephant foot Tree Trunk vase. Harder to find than an IB Funeral vase! Does have damage to the top but show me where another one is available! Pretty!!!!
- 222 Nwood 12" green Tree Trunk mid-size vase. Super pretty!
- 223 Nwood 13" amy. Tree Trunk mid-size vase.
- 224 Nwood 13" purple Tree Trunk mid-size vase
- 225 Nwood 13 1/2" mari. Tree Trunk mid-size vase. Nice dark rich color!
- 226 Nwood 14" purple Tree Trunk mid-size vase. Super nice!
- 227 Nwood 10" light amy. Tree Trunk vase.
- 228 Nwood 10" purple Tree Trunk vase.
- 229 Nwood 10" green Tree Trunk vase. Very nice!
- 230 Nwood 10" white Tree Trunk vase.
- 231 Nwood 9 1/2" deep rich mari Tree Trunk vase
- 232 Imp. Elec. Purple 11" Free Fold vase. HOT!!!
- 233 Imp. 12" smoke Free Fold vase. Killer shape!!
- 234 Imp. 12" green Free Fold vase.
- 235 Imp 13" mari Free Fold vase
- 236 Nwood purple Wishbone single lily epergne
- 237 Nwood 9" PO Strawberry plate. Nice opal on tips. Rare plate!

- 238 Nwood AO Heart & Flower compote. Super bright color!
- 239 Nwood mari. Heart & Flower compote. Nice & Bright!
- 240 Nwood emerald green Petals stemmed compote. As pretty as you'll see!!!
- 241 Nwood purple Petals stemmed compote. Scarce
- 242 Nwood dark mari. Petals stemmed compote.
- 243 West. 8 1/2" blue opal Scales ruffled bowl. Love this color!!
- 244 West. 8 1/2" blue opal Carolina Dogwood ruffled bowl. Nice!!! Has base chipping
- 245 West. 8 1/2" peach opal Carolina Dogwood ICS bowl.
- 246 West. 8 1/2" mari on milk glass Carolina Dogwood ruffled bowl. RARE!!!
- 247 West. 9" PO Scales plate. Very hard to find.
- 248 Dugan 6 1/2" PO Wide Rib pinched star shaped vase. Rare! Really neat!
- 249 Dugan purple Amaryllis tri-corned compote
- 250 Imp. 5" dark mari Ripple squatty vase
- 251 Imp. 4 1/2" mari Smooth Panels squatty vase.
- 252 Imp. 4 1/2" mari Smooth Panels squatty vase w/ruffled top
- 253 Imp. 5 1/2" white Smooth Panels squatty vase
- 254 Imp. 5 1/4" radium mari. Smooth Panels squatty vase
- 255 Imp. 6 1/2" amber Morning Glory squatty vase. Uniridized
- 256 Imp. 5 3/4" green Morning Glory squatty vase. Rare color!
- 257 5" mari. Woodlands squatty vase
- 258 Nwood 9" Elec. Blue Peacocks Plate
- 259 Nwood 9" Elec. Purple Peacocks Plate
- 260 Nwood 9" Frosty White Peacocks Plate with Plain Back
- 261 Nwood 9" Ice Green Peacocks Plate with Ribbed Back
- 262 Nwood 9" Dark Mari Peacocks Plate with Ribbed Back - SUPER!
- 263 Nwood 8.5" AO Peacocks Ruffled Bowl. Great butterscotch color!
- 264 Nwood 8.5" Elec. Purple Peacocks Ruffled Bowl
- 265 Nwood 8.5" Elec. Purple Peacocks Ruffled Bowl - 2 HOT Purple bowls in a row!
- 266 Nwood 8.5" White Peacocks Ruffled Bowl
- 267 Nwood 9" Mari Peacocks PCE Bowl. Dark, Rich color.
- 268 Nwood 8.5" Blue Peacocks Ruffled Bowl. Nice, bright yellow color
- 269 Fenton 7" Mari Blackberry OE Vase - RARE
- 270 Fenton 8" Amberina Peacock and Grape Ft'd Bowl. Has a lot of Red in it!
- 271 Fenton 9" Green Peacock and Grape 3-in-1 Edge Bowl. Great pressing and color
- 272 Fenton 9" Purple Peacock and Grape 3-in-1 Edge Bowl. Sharp looking bowl
- 273 Fenton 9" Blue Peacock and Grape 8-Ruffle Bowl. Another nice one.
- 274 Fenton 9" Bright Green Peacock and Grape 8-Ruffle Bowl
- 275 Imp. Red Mini Rosebowl\*\*\*
- 276 Nwood 9" purple Good Luck plate w/ nice electric hi-lights. pretty plate
- 277 Nwood 8.5" Green Good Luck ruffled bowl Scarce
- 278 Nwood 8.5" blue Good Luck stippled ruffled bowl Very hard to find
- 279 RARE Fenton 9" Moonstone/ peach opal Holly ruffled bowl. SUPER HARD TO FIND!!
- 280 Fenton 9" GREEN Holly plate. Scarce
- 281 Fenton 9" blue Leaf Chain plate.
- 282 Fenton 9" dark mari Heart & Vine Spectors Dept Store plate. NICE!
- 283 Nwood 9" dark mari Poppy Show plate. HERE's a good one!
- 284 Dugan purple Wishbone plate. Nice elec hi-lights
- 285 Intaglio Flower Mari Miniature basket
- 286 Intaglio Flower Peach Opal Miniature basket RARE
- 287 Intaglio Flower Blue Opal Miniature basket VERY RARE!!!
- 288 Unusual Irid white opaque SInging Birds Ruffled tumbler vase. RARE whimsy/ This is irid. Terry Crider
- 289 Nwood GREEN large Grape & Cable compote
- 290 Nwood IG Grape & Cable banana boat. Scarce
- 291 Nwood purple G&C cracker jar
- 292 Imp 8" smoke Acanthus ruffled bowl
- 293 Nwood 10" dark mari Peacock at Urn MIC bowl Stippled. Very dark color
- 294 Imp 9" smoke Acanthus plate. Scarce
- 295 Fenton 9" white Persian Medallion plate. RARE! Frosty irid.
- 296 Nwood 10" mari G&C ruffled master berry bowl
- 297 Nwood 9" mari Wishbone ft'd plate. Scarce haven't seen one available in awhile
- 298 Fenton 9" mari Butterfly & Berry bowl
- 299 Fenton mari Paneled Dandelion 6pc water set
- 300 Fenton BLUE Paneled Dandelion 4pc water set
- 301 Fenton PURPLE Paneled Dandelion 5pc water set
- 302 Fenton GREEN Paneled Dandelion 7pc water set
- 303 Imp mari Gothic Arches vase, Scarce
- 304 Imp bright mari Poppy Show vase, NICE!!
- 305 Nwood mari G&C MASTER punch set w/ 12 cups. Very nice matched set
- 306 Nwood Grape Arbor white tankard. Scarce
- 307 Em. Green 4 Flowers Vari plate. SUPER
- 308 Nwood 8.5" mari Good Luck ruffled bowl
- 309 Nwood GREEN 8.5" Good Luck ruffled bowl Nice bright green
- 310 Nwood 8.5" elec blue Embroidered Mums ruffled bowl WOW!
- 311 4 Flowers vari 9" purple plate
- 312 Nwood 8.5" GREEN G&C stippled ruffled bowl Scarce
- 313 Dugan 7pc mari Dahlia berry set. Scarce
- 314 Fenton 5" VASELINE OE 2 side hat
- 315 Fenton mari Panther master berry bowl.



**Jim Wroda Auctions**  
5239 ST RT 49 S  
Greenville, Ohio 45331  
937.548.7835  
Email: jimwroda@mac.com

PRESORTED  
FIRST CLASS MAIL  
U.S. POSTAGE  
**PAID**  
CELINA, OH  
PERMIT NO. 99



**FIRST CLASS MAIL**



13-15\*\*\*\*\*AUTO\*\*MIXED AADC 430  
LEE MARKLEY  
PO BOX 306  
502 N BROADWAY ST  
MENTONE IN 46539-9531



<<<ICE GREEN OPAL!  
What a STUNNING plate!



**Keystone Carnival Glass Convention 2015**  
Holiday Inn - Grantville, PA.