

HEART OF AMERICA  
CARNIVAL GLASS ASSOCIATION CONVENTION

# Carnival Glass

## 2015 AUCTION

Saturday, April 25, 9:30 a.m.

Embassy Suites Airport Hotel  
Kansas City, Missouri

6

26

**The Bud Martin  
Collection**



199

5

27

14

13

JIM & JAN SEECK

*Seeck* Auctions

641-424-1116

To view the complete auction, check our website at: [www.seeckauction.com](http://www.seeckauction.com)

JIM & JAN SEECK

# CARNIVAL GLASS AUCTION

641-424-1116

**Saturday, April 25, 2015 — 9:30 AM**

*Embassy Suites International Airport Hotel*

**7640 NW Tiffany Springs Parkway**

**Kansas City, Missouri**

**NO BUYER'S PREMIUM — OPEN TO THE PUBLIC**

ABSENTEE BIDDING is available on-line through Auction Flex  
using our online catalog at [www.seeckauction.com](http://www.seeckauction.com)

★ **Online absentee bidding closes Fri., April 24 at 9 p.m. CST**

Please email us and we will put you on our email mailing list for auction notices.

e-mail: [jimjan@seeckauction.com](mailto:jimjan@seeckauction.com)

## The Bud Martin Collection

Fantastic Northwood glass! That is what Bud Martin from Arkansas collected for many years. Bud and his wife traveled to many of the conventions and auctions to find and purchase their glass. A favorite pattern of Buds was Stippled Strawberry and as you look through his catalog, you will see several only known Strawberry pieces plus just a wonderful array of rare and beautiful glass! Once again, the HOACGA convention and auction will be one not to miss!

**LODGING:** Reservations can be made by calling the hotel directly at 816-891-7788. Ask for reservations and mention the HOACGA Convention. If you have a problem

or questions about reservations at the hotel or questions about the convention, please call Bob Grissom at: 816-356-5320. ITEXAS CLUB CONVENTION INFO:

Visit the Heart of America Carnival Glass Association website at [www.hoacga.com](http://www.hoacga.com)

**Terms:** Cash or Check, VISA, MasterCard & Discover accepted w/proper ID. 4% Clerking Fee on all purchases made using credit cards. Announcements made day of sale take precedence over any printed information.

### We have 3 options for absentee bidding for our *live* auctions:

1) If you **DO NOT** have internet access, you can: Call us by phone to enter your bids at (641)424-1116 **OR** by sending the numbers of the item(s) desired and the amount bid on each to: Seeck Auctions, PO Box 377, Mason City, Iowa 50402. We would prefer you call us with your bids rather than send them in a letter.) We will enter your bids into our online bidding system.

★ Have all written bids in by **Wed., April 22.**

2) Enter your bids from our website into our online catalog through the Auction Flex system.

- ◆ **First-time bidders: Set up your account** by creating a user name and password and filling out basic information. You will also need to **register for the auction** which will ask you to enter a valid credit card number. This card will be validated by a one time only charge of \$1 charge to your card. **You will use this user name and password for all our auctions.**
- ◆ You are not required to pay by credit card if you are successful with your online bid. We will let you know what you owe us through an email and you can decide how you would like to pay us.
- ◆ An exciting advantage to online bidding is that you can be notified by email if you are outbid on an item, which lets you increase your bid in time, or bid on something else. **There is a cutoff date and time, for each auction, for entering your bids online.** ★ **Online absentee bidding for this auction closes Friday, April 24 at 9 p.m. CST.**
- ◆ Remember that just because you are the high bidder in the online catalog, this does not mean you have won the item. Your bid still needs to **beat** the floor bidders and live phone bidders. If your high bid lands with a floor bidder during the live auction, the floor bidder takes precedence. You might want to bid higher on a highly desired item for a better chance at winning its absentee bid.
- ◆ If you do not receive an item that sold for less than your bid, assume we canceled your bid because the item had a severe manufacture problem, damage, or was not listed correctly.

3) **Live phone bidding is available on pieces with an estimated sale price of \$500 or more.** ★ Contact us by the **Thursday before the auction, which is April 23** We will need to know the lot# and the phone number that you can be reached at on the day of the auction. We also need your home phone number if different than the above number.

Please call with questions: 641-424-1116.

If you win an online bid you will be notified by phone or e-mail between one to three days after the auction.

There is a \$7 handling charge for each successful bid, with shipping and insurance charges additional.

**ONLINE BID INCREMENTS:** \$1 - \$100/\$5    \$100 - \$200/\$10    \$200 - \$700/\$25    \$700 - \$1,500/\$50  
\$1,500 - \$3,000/\$100    \$3,000 - \$5,000/\$250    \$5,000+ Auctioneer's Discretion

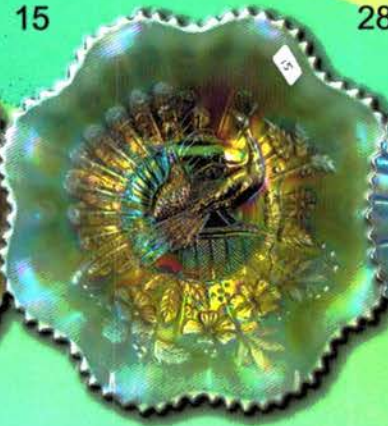
- \_\_\_ 1. **Scroll Embossed small size ruffled compote - violet blue - rare color, very pretty**
- \_\_\_ 2. Scroll Embossed small size ruffled compote - purple - nice
- \_\_\_ 3. Scroll Embossed small size ruffled compote - amber - nice
- \_\_\_ 4. Beaded Bullseye 12" vase - purple - super
- \_\_\_ 5. **STIPPLED STRAWBERRY 9" PLATE W/RIBBED BACK - ICE GREEN - A FANTASTIC RARITY, ONLY ONE I KNOW OF, A BEAUTY!**
- \_\_\_ 6. **STIPPLED STRAWBERRY 9" PLATE W/RIBBED BACK - WHITE - ALSO AN ABSOLUTE BEAUTY, ONLY ONE I KNOW OF, GREAT CHANCE TO BUY GREAT THINGS!**
- \_\_\_ 7. **STIPPLED STRAWBERRY 9" PLATE W/RIBBED BACK - ICE BLUE - BUD HAS BEEN KNOWN FOR THE BEST STIPPLED STRAWBERRY COLLECTION IN THE COUNTRY AND HERE IS ANOTHER!**
- \_\_\_ 8. **Stippled Strawberry 9" plate w/ribbed back - green - almost radium, a dandy**
- \_\_\_ 9. Stippled Strawberry 9" plate w/ribbed back - purple - scarce, chip on base
- \_\_\_ 10. **Stippled Strawberry 9" plate w/ribbed back - marigold - radium type irid., dark & pretty**
- \_\_\_ 11. **Grape & Cable mid-size 8 pc. punch set - green - very hard to find in this size, pretty**
- \_\_\_ 12. **Wishbone & Spades 6" plate - purple - super!**
- \_\_\_ 13. **PEACOCKS RUFFLED BOWL W/RIBBED BACK - LIME GREEN OPAL - SUPER RARE BOWL & SUPER PRETTY, MOST OF THESE ARE FILLED WITH BUBBLES, THIS ONE IS NOT**
- \_\_\_ 14. **PEACOCKS RUFFLED BOWL W/RIBBED BACK - POWDER BLUE OPAL - EXTREMELY RARE COLOR, VERY PRETTY**
- \_\_\_ 15. **Peacocks ruffled bowl w/ribbed back - aqua opal - pastel & super, nice opal**
- \_\_\_ 16. **Peacocks ruffled bowl w/ribbed back - aqua opal - butterscotch & very nice**
- \_\_\_ 17. **Peacocks ruffled bowl w/ribbed back - ice blue - very scarce, nice**
- \_\_\_ 18. **Peacocks ruffled bowl w/ribbed back - ice green - pretty**
- \_\_\_ 19. Peacocks ruffled bowl w/ribbed back - white - also very pretty
- \_\_\_ 20. **Peacocks ruffled bowl w/ribbed back - aqua - extremely hard color to find, super pretty with butterscotch irid.**
- \_\_\_ 21. Peacocks ruffled bowl w/ribbed back - lavender - very nice
- \_\_\_ 22. Peacocks ruffled bowl w/ribbed back - marigold - lots of pretty pink
- \_\_\_ 23. **Stippled Grape & Cable bonbon - aqua - very pretty, rare color!**
- \_\_\_ 24. **Enameled Iris w/diagonal band 6 pc. water set - amethyst - super nice**
- \_\_\_ 25. Enameled Iris w/diagonal band 5 pc. water set - marigold
- \_\_\_ 26. **GOOD LUCK 9" PLATE W/RIBBED BACK - ICE GREEN - VERY, VERY RARE & SUPER PRETTY**
- \_\_\_ 27. **GOOD LUCK 9" PLATE W/RIBBED BACK - WHITE - SUPER IRID., VERY RARE PLATE, GREAT OPPORTUNITY!**
- \_\_\_ 28. **GOOD LUCK 9" PLATE W/RIBBED BACK - ICE BLUE - SUPER FANTASTIC, SUPER RARE!**
- \_\_\_ 29. **Good Luck 9" plate w/ribbed back - marigold - dark & beautiful**
- \_\_\_ 30. **Hyacinth Gone with the Wind lamp - marigold - very rare lamp & nice**
- \_\_\_ 31. **Rose Show ruffled bowl - lime green opal - very rare bowl & a beauty**
- \_\_\_ 32. **Rose Show ruffled bowl - sapphire - super neat bowl, rare & beautiful, from the Morgan collection**
- \_\_\_ 33. **Rose Show ruffled bowl - horehound - very rare color & very pretty**
- \_\_\_ 34. **Rose Show ruffled bowl - aqua - another rare & beautiful bowl**
- \_\_\_ 35. Rose Show ruffled bowl - aqua opal - pastel, nice
- \_\_\_ 36. Rose Show ruffled bowl - aqua opal - heavy butterscotch, very pretty
- \_\_\_ 37. **Rose Show ruffled bowl - lime green - another very rare color for these, pretty**
- \_\_\_ 38. Rose Show ruffled bowl - ice green - scarce
- \_\_\_ 39. Rose Show ruffled bowl - white - pretty irid.
- \_\_\_ 40. **Rose Show ruffled bowl - green - a beauty, tough color**
- \_\_\_ 41. Rose Show ruffled bowl - blue - electric highlights
- \_\_\_ 42. Rose Show ruffled bowl - purple - very nice
- \_\_\_ 43. Rose Show ruffled bowl - marigold - dark, nice
- \_\_\_ 44. **Memphis 8 pc. punch set - white - very rare set, highly desirable**
- \_\_\_ 45. **STIPPLED THREE FRUITS 9" PLATE W/RIBBED BACK - ICE BLUE - EXTREMELY RARE COLOR & SUPER NICE**
- \_\_\_ 46. **Stippled Three Fruits 9" plate w/ribbed back - horehound - very, very rare color, nice**
- \_\_\_ 47. **Stippled Three Fruits 9" plate w/ribbed back - aqua opal - very scarce, nice**
- \_\_\_ 48. Stippled Three Fruits 9" plate w/ribbed back - aqua opal - opal only on tips, nice look
- \_\_\_ 49. **Stippled Three Fruits 9" plate w/ribbed back - aqua - hard to find color w/super irid.**
- \_\_\_ 50. **Stippled Three Fruits 9" plate w/ribbed back - sapphire - rare color, minor scratches on fruit**
- \_\_\_ 51. Stippled Three Fruits 9" plate w/ribbed back - blue - very nice
- \_\_\_ 52. Stippled Three Fruits 9" plate w/ribbed back - purple - has electric blue irid., pretty
- \_\_\_ 53. Stippled Three Fruits 9" plate w/ribbed back - lavender
- \_\_\_ 54. Stippled Three Fruits 9" plate w/ribbed back - marigold - dark, super, slight rubbing on the fruit
- \_\_\_ 55. Stippled Three Fruits 9" plate w/ribbed back - marigold - more towards the pastel side, pretty
- \_\_\_ 56. **Acorn Burrs 7 pc. water set - green - scarce set, pitcher is very nice**
- \_\_\_ 57. Acorn Burrs 7 pc. water set - purple - scarce set, very pretty
- \_\_\_ 58. **Hearts & Flowers PCE bowl w/ribbed back - lime green - super pretty w/great irid.**
- \_\_\_ 59. **Hearts & Flowers PCE bowl w/ribbed back - white - scarce color, nice**
- \_\_\_ 60. **Hearts & Flowers PCE bowl w/ribbed back - green - a beautiful one**
- \_\_\_ 61. Hearts & Flowers PCE bowl w/ribbed back - purple - very nice
- \_\_\_ 62. Hearts & Flowers PCE bowl w/ribbed back - marigold - dark, pretty
- \_\_\_ 63. **Grape & Cable cracker jar - ice green - very minor pinpoint of inner edge of base, very rare & pretty piece**
- \_\_\_ 64. Grape & Cable cracker jar - purple
- \_\_\_ 65. Stippled Grape & Cable cracker jar - marigold

- \_\_\_ 66. **Poppy Show ruffled bowl - green - rare color, pretty**
- \_\_\_ 67. **Poppy Show ruffled bowl - ice green - very scarce color**
- \_\_\_ 68. **Poppy Show ruffled bowl - ice blue - light on irid.**
- \_\_\_ 69. Poppy Show ruffled bowl - marigold - dark, nice
- \_\_\_ 70. Fruits & Flowers bonbon - ice green - very nice
- \_\_\_ 71. Fruits & Flowers bonbon - ice blue - also nice
- \_\_\_ 72. Fruits & Flowers bonbon - white - pretty irid.
- \_\_\_ 73. Fruits & Flowers bonbon - aqua opal - great example
- \_\_\_ 74. Fruits & Flowers bonbon - purple - pretty
- \_\_\_ 75. **Stippled Grape & Cable Variant 9" plate w/ ribbed back - sapphire - super pretty, very rare**
- \_\_\_ 76. **Stippled Grape & Cable Variant 9" plate w/ribbed back - green - very pretty, some would call this emerald**
- \_\_\_ 77. Stippled Grape & Cable Variant 9" plate w/ribbed back - marigold - very scarce color, pretty
- \_\_\_ 78. Stippled Grape & Cable Variant 9" plate w/ribbed back - purple - scarce
- \_\_\_ 79. Old Rose Distillery/Stippled Grape & Cable Variant 9" plate w/ribbed back - green - always desirable
- \_\_\_ 80. **Peach 5 pc. water set - blue - scarce, nice**
- \_\_\_ 81. **Poinsettia & Lattice ftd ruffled bowl - ice blue - scarce**
- \_\_\_ 82. Poinsettia & Lattice ftd ruffled bowl - purple
- \_\_\_ 83. Poinsettia & Lattice ftd ruffled bowl - blue opal - not Carnival Glass
- \_\_\_ 84. **Stippled Grape & Cable small size 8 pc. punch set - blue - super pretty set, very, very rare**
- \_\_\_ 85. **Nippon PCE bowl w/ribbed back - ice green - rare, pretty**
- \_\_\_ 86. Nippon PCE bowl w/ribbed back - white - nice
- \_\_\_ 87. Nippon PCE bowl w/BW back - ice blue - dark, pretty
- \_\_\_ 88. Nippon PCE bowl w/BW back - white - pretty
- \_\_\_ 89. **Peacock at the Fountain ruffled compote - ice green - scarce, very nice**
- \_\_\_ 90. **Peacock at the Fountain ruffled compote - ice blue - nice**
- \_\_\_ 91. Peacock at the Fountain ruffled compote - white - scarce, nice
- \_\_\_ 92. Peacock at the Fountain ruffled compote - blue - scarce
- \_\_\_ 93. Peacock at the Fountain ruffled compote - purple - scarce, pretty
- \_\_\_ 94. Wishbone ftd ruffled bowl - ice blue - scarce, nice
- \_\_\_ 95. Wishbone ftd ruffled bowl - marigold
- \_\_\_ 96. Grape & Cable banana boat - ice green - scarce, nice irid.
- \_\_\_ 97. Grape & Cable banana boat - green - nice, hard color to find
- \_\_\_ 98. Stippled & Banded Grape & Cable banana boat - marigold - dark color w/pretty irid.
- \_\_\_ 99. **N's Peacock at Urn master IC bowl - green - super rare color, nice, not often sold**
- \_\_\_ 100. **N's Peacock at Urn master IC bowl - ice green - pretty, scarce**
- \_\_\_ 101. **N's Peacock at Urn master IC bowl - ice blue - pretty irid.**
- \_\_\_ 102. N's Peacock at Urn IC sauce - ice blue - nice
- \_\_\_ 103. N's Peacock at Urn master IC bowl - white - nice
- \_\_\_ 104. N's Peacock at Urn IC sauce - white
- \_\_\_ 105. N's Peacock at Urn master IC bowl - purple - has electric highlights
- \_\_\_ 106. N's Peacock at Urn IC sauce - purple
- \_\_\_ 107. N's Peacock at Urn master IC bowl - marigold - dark, nice
- \_\_\_ 108. N's Peacock at Urn IC sauce - marigold
- \_\_\_ 109. N's Peacock at Urn IC sauce - blue
- \_\_\_ 110. **Acorn Burrs 8 pc. punch set - white - super rare w/pretty irid., top of base has minor pinpoint**
- \_\_\_ 111. **Acorn Burrs 8 pc. punch set - green - scarce set, highly desirable**
- \_\_\_ 112. **Acorn Burrs 8 pc. punch set - marigold - dark & super pretty w/lots of pink & blue highlights - one cup cracked**
- \_\_\_ 113. Acorn Burrs punch bowl & base w/1 cup - purple - pretty bowl, crack & repaired base
- \_\_\_ 114. Acorn Burrs 8 pc. punch set - ice blue - extremely rare set, base has burst on top edge, bowl has repaired point
- \_\_\_ 115. Acorn Burrs 8 pc. punch set - ice green - bowl has been restored
- \_\_\_ 116. M'burg Strawberry Wreath ruffled compote - green - radium & nice, only a couple pieces of Millersburg in the sale!
- \_\_\_ 117. M'burg Strawberry Wreath ruffled compote - amethyst - radium & nice
- \_\_\_ 118. Grape & Cable cologne bottle - green - nice
- \_\_\_ 119. Grape & Cable cologne bottle - purple
- \_\_\_ 120. Grape & Cable cologne bottle - marigold - nice
- \_\_\_ 121. Grape & Cable cvd compote - purple - nice
- \_\_\_ 122. Springtime butter dish - green - very scarce, nice
- \_\_\_ 123. Stag & Holly lg size IC shaped ftd bowl - marigold
- \_\_\_ 124. **STIPPLED STRAWBERRY RUFFLED BOWL W/BW BACK - ICE BLUE - ONLY ONE I KNOW OF WITH THE BASKETWEAVE BACK, SUPER PRETTY, WOW!**
- \_\_\_ 125. **STIPPLED STRAWBERRY RUFFLED BOWL W/BW BACK - WHITE - THIS IS GORGEOUS! THIS IS THE ONLY WHITE BOWL I KNOW OF**
- \_\_\_ 126. Stippled Strawberry ruffled bowl w/BW back - horehound - super beautiful, rare color
- \_\_\_ 127. N's Corn vase w/stalk base - ice green
- \_\_\_ 128. **Flowers & Frames dome ftd ruffled bowl - purple - an electric beauty!**
- \_\_\_ 129. **Peacocks 9" plate w/ribbed back - ice blue - very pretty, very scarce**
- \_\_\_ 130. Peacocks 9" plate w/ribbed back - lime green - scarce color
- \_\_\_ 131. Peacocks 9" plate w/ribbed back - ice green - nice
- \_\_\_ 132. Peacocks 9" plate w/ribbed back - white
- \_\_\_ 133. Peacocks 9" plate w/ribbed back - green - scarce color, pretty
- \_\_\_ 134. Peacocks 9" plate w/ribbed back - blue - electric highlights, nice
- \_\_\_ 135. Peacocks 9" plate w/ribbed back - lavender - very tiny spot of epoxy between points, pretty
- \_\_\_ 136. Peacocks 9" plate w/ribbed back - purple
- \_\_\_ 137. Peacocks 9" plate w/ribbed back - marigold - nice
- \_\_\_ 138. N's Thin Rib mid size 13 1/2" vase - green - pretty, one of a very few vases in this sale
- \_\_\_ 139. **Good Luck ruffled bowl w/ribbed back - ice green - extremely rare bowl, minor plate holder nick on edge**
- \_\_\_ 140. **Good Luck ruffled bowl w/ribbed back - ice blue - super pretty, epoxied chip on back of point**
- \_\_\_ 141. **Good Luck ruffled bowl w/ribbed back - aqua opal - very scarce w/nice opal**
- \_\_\_ 142. **Good Luck ruffled bowl w/ribbed back - sapphire - very rare bowl, unique irid. - small chip on horseshoe**

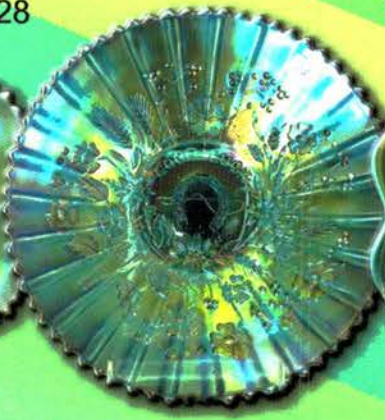
7



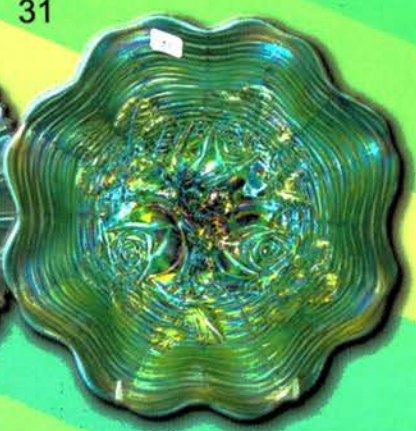
15



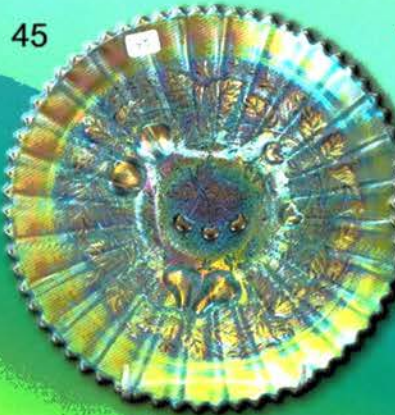
28



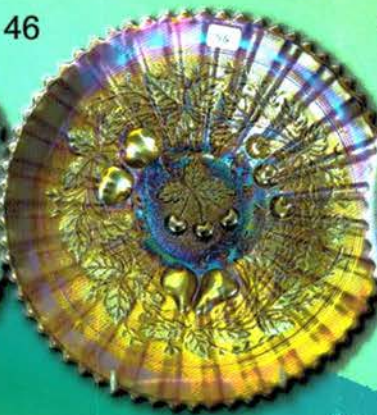
31



45



46



47



58



110



294



56



11



24



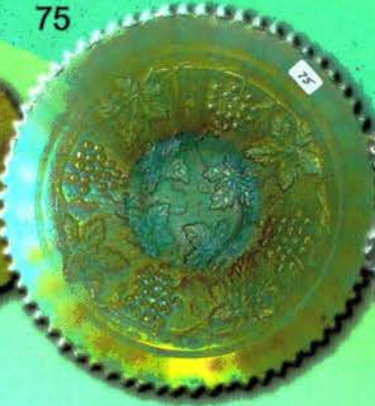
44



66



75



81



99



23



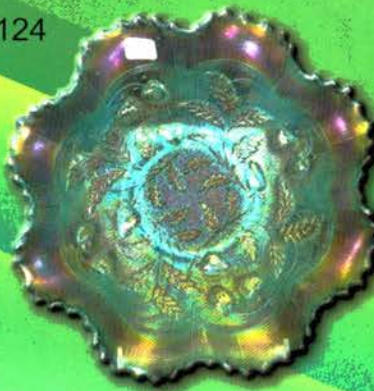
112



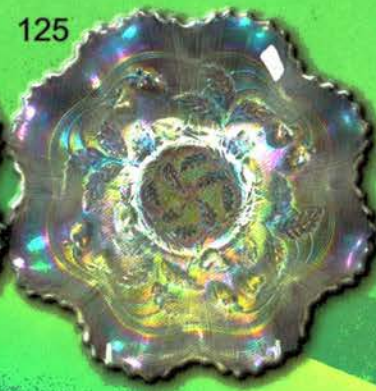
228



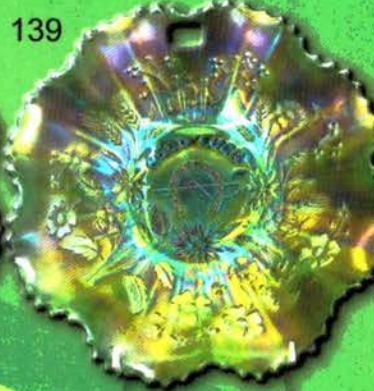
124



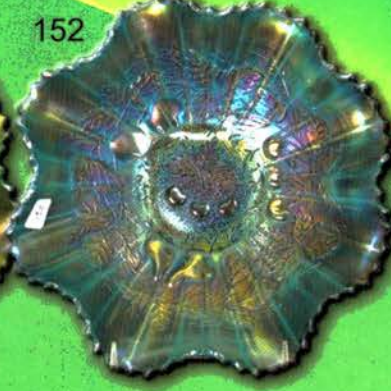
125



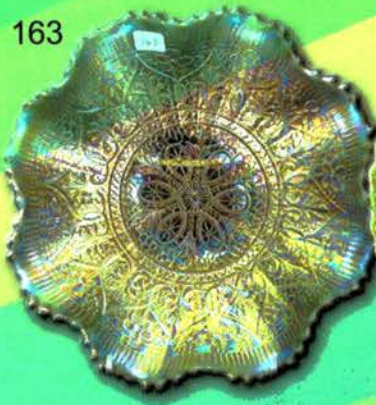
139



152



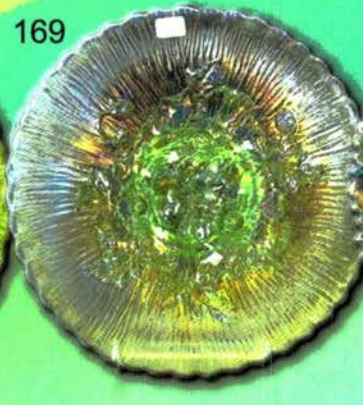
163



168



169



219



280



80



304



229



259



275



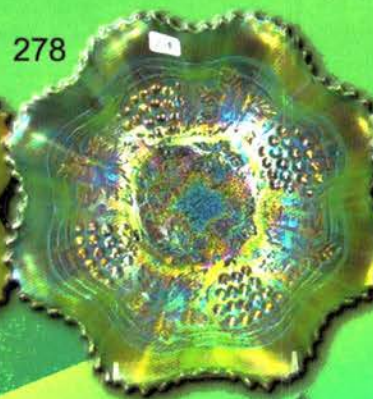
265



272



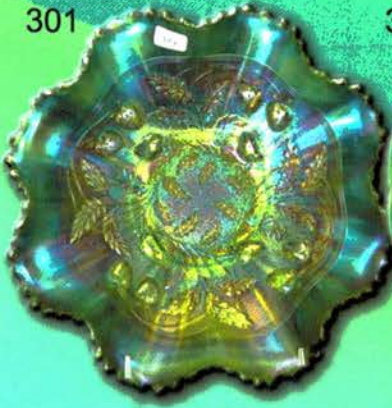
278



300



301



315



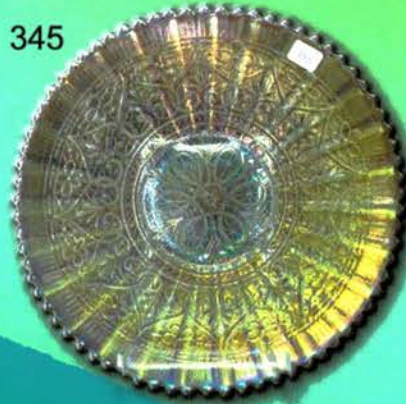
337



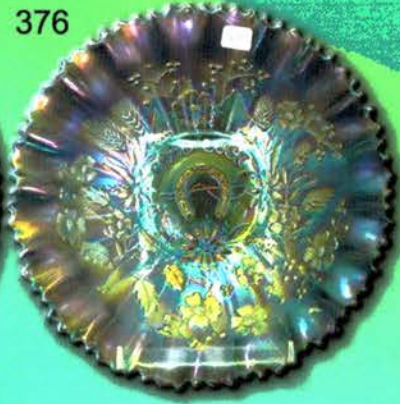
344



345



376



325



324



358





- \_\_\_ 143. Good Luck ruffled bowl w/ribbed back - green - nice
- \_\_\_ 144. Good Luck ruffled bowl w/ribbed back - blue
- \_\_\_ **145. Dandelion tankard water pitcher w/one tumbler purple - tankard has etching "Ella Kress 1914", pretty**
- \_\_\_ **146. Rose Show Variant 9" plate - renninger blue - pretty for these, rare**
- \_\_\_ 147. Rose Show Variant 9" plate - marigold - minor nick on rose, nice example
- \_\_\_ 148. Grape & Cable hatpin holder - green - pretty
- \_\_\_ 149. Wishbone ftd 9" plate - marigold - scarce, nice
- \_\_\_ 150. N's Town Pump - purple - a classic, nice - nick on knob on handle
- \_\_\_ **151. STIPPLED THREE FRUITS RUFFLED BOWL W/RIBBED BACK - LIME GREEN - CAN'T REMEMBER SEEING ANOTHER ONE OF THESE, VERY RARE**
- \_\_\_ **152. Stippled Three Fruits ruffled bowl w/ribbed back - ice blue - super pretty irid., rare!**
- \_\_\_ **153. Stippled Three Fruits ruffled bowl w/ribbed back - sapphire - rare color, nice**
- \_\_\_ 154. Stippled Three Fruits ruffled bowl w/ribbed back - white - pretty irid.
- \_\_\_ 155. Stippled Three Fruits ruffled bowl w/ribbed back - aqua opal - slight butterscotch, nice example
- \_\_\_ 156. Stippled Three Fruits ruffled bowl w/ribbed back - iridized custard - extremely rare, has 2nd place ribbon from 1976 Texas State Fair
- \_\_\_ 157. Stippled Three Fruits ruffled bowl w/ribbed back - blue - pinpoint between points
- \_\_\_ 158. Stippled Three Fruits ruffled bowl w/ribbed back - purple
- \_\_\_ 159. Stippled Three Fruits ruffled bowl w/ribbed back - marigold
- \_\_\_ 160. Singing Birds 7 pc. water set - green - scarce, nice
- \_\_\_ 161. Singing Birds 7 pc. water set - purple - nice
- \_\_\_ 162. Singing Birds water pitcher w/1 tumbler - marigold
- \_\_\_ **163. Hearts & Flowers ruffled bowl w/ribbed back - aqua opal - very rare bowl, has pretty, even irid.**
- \_\_\_ 164. Hearts & Flowers ruffled bowl w/ribbed back - ice blue - nice
- \_\_\_ 165. Hearts & Flowers ruffled bowl w/ribbed back - white - nice
- \_\_\_ 166. Grape & Cable 4 pc. table set - purple - nice matching set, chip on underside of butter bottom
- \_\_\_ 167. Grape & Cable 4 pc. table set - marigold - pretty set
- \_\_\_ **168. Poppy Show 9" plate - green - rare color, highly desirable & nice**
- \_\_\_ **169. Poppy Show 9" plate - ice green - rare color**
- \_\_\_ **170. Poppy Show 9" plate - ice blue - pretty irid.**
- \_\_\_ 171. Poppy Show 9" plate - white - nice example
- \_\_\_ 172. Poppy Show 9" plate - purple
- \_\_\_ 173. Poppy Show 9" plate - marigold - dark, super
- \_\_\_ 174. Poppy Show 9" plate - pastel marigold - very nice
- \_\_\_ **175. Stippled Singing Birds mug - green - very rare mug, pretty, underrated**
- \_\_\_ 176. Stippled Singing Birds mug - marigold
- \_\_\_ **177. Stippled Grape & Cable PCE bowl w/ribbed back - lime green - extremely rare color, highly desirable**
- \_\_\_ **178. Stippled Grape & Cable PCE bowl w/ribbed back - aqua opal - pastel, rare**
- \_\_\_ **179. Stippled Grape & Cable PCE bowl w/ribbed back - ice blue - scarce, pretty**
- \_\_\_ 180. Stippled Grape & Cable PCE bowl w/ribbed back - purple - very hard to find stippled
- \_\_\_ 181. Stippled Grape & Cable Variant PCE bowl w/ribbed back - aqua opal - butterscotch, very rare & nice
- \_\_\_ 182. Stippled Grape & Cable Variant PCE bowl w/ribbed back - blue - scarce, has electric highlights
- \_\_\_ 183. Stippled Grape & Cable Variant PCE bowl w/ribbed back - marigold
- \_\_\_ **184. Fluffy Peacock 3 pc. water set - blue - scarce color for these, nice**
- \_\_\_ 185. Fluffy Peacock 6 pc. water set - green - scarce - one tumbler w/large chip on base
- \_\_\_ 186. Fluffy Peacock water pitcher w/1 tumbler - amethyst - very pretty, scarce
- \_\_\_ 187. Fluffy Peacock water pitcher w/1 tumbler - marigold - nice
- \_\_\_ **188. Embroidered Mums ruffled bowl w/ribbed back - ice green - scarce, nice**
- \_\_\_ 189. Embroidered Mums ruffled bowl w/ribbed back - ice blue - pretty irid., scarce
- \_\_\_ 190. Embroidered Mums ruffled bowl w/ribbed back - marigold
- \_\_\_ **191. Grape & Cable sweetmeat - marigold - rare color, very pretty**
- \_\_\_ 192. Grape & Cable sweetmeat - purple - pretty
- \_\_\_ **193. Lotus & Grape 9" plate - amethyst - very scarce Fenton plate, nice**
- \_\_\_ 194. N's Eight Sided bushel basket - ice green - scarce
- \_\_\_ 195. N's Eight Sided bushel basket - white
- \_\_\_ 196. Strawberry 9" plate w/BW back - green
- \_\_\_ 197. Strawberry 9" plate w/plain back - marigold - pretty
- \_\_\_ 198. Wild Strawberry 8" handgrip plate - purple - super pretty irid.
- \_\_\_ **199. PEACOCK AT THE FOUNTAIN 8 PC. PUNCH SET - WHITE - VERY RARE SET, PRETTY**
- \_\_\_ **200. Peacock at the Fountain 10 pc. punch set - purple - scarce set**
- \_\_\_ 201. Peacock at the Fountain 6 pc. punch set - lime green top, ice green base & cups - chip off point of bowl, 1 cup perfect
- \_\_\_ 202. Fenton Peacock at Urn 9" plate - blue - very pretty
- \_\_\_ 203. Fenton Peacock at Urn 9" plate - white - pretty irid.
- \_\_\_ 204. Fenton Peacock at Urn 9" plate - marigold - super, super, super
- \_\_\_ **205. Lattice & Grape 7 pc. water set - blue - very pretty**
- \_\_\_ 206. Lattice & Grape 7 pc. water set - marigold - nice
- \_\_\_ 207. N's Bushel Basket - aqua opal - nice
- \_\_\_ 208. N's Bushel Basket - lime green - scarce color
- \_\_\_ 209. N's Bushel Basket - ice green
- \_\_\_ 210. N's Bushel Basket - lavender
- \_\_\_ 211. N's Bushel Basket - purple
- \_\_\_ 212. N's Bushel Basket - marigold
- \_\_\_ **213. Stippled Strawberry PCE bowl w/ribbed back - green - scarce color**
- \_\_\_ 214. Stippled Strawberry PCE bowl w/ribbed back - blue - has electric highlights
- \_\_\_ 215. Stippled Strawberry PCE bowl w/ribbed back - marigold - nice
- \_\_\_ 216. Stippled Strawberry PCE bowl w/ribbed back - marigold - has more pastel type irid.
- \_\_\_ 217. Orange Tree hatpin holder - blue - very minor toe nick
- \_\_\_ 218. Orange Tree hatpin holder - marigold
- \_\_\_ **219. Peacocks PCE bowl w/ribbed back - ice blue - very scarce, pretty irid.**
- \_\_\_ **220. Peacocks PCE bowl w/ribbed back - ice green - scarce, nice**

- \_\_\_ **221. Peacocks PCE bowl w/ribbed back - horehound - very rare color, some may call this a smokey amber**
- \_\_\_ 222. Peacocks PCE bowl w/ribbed back - amethyst - spot of missing irid. on one bird
- \_\_\_ 223. Peacocks PCE bowl w/ribbed back - purple - pretty
- \_\_\_ 224. Peacocks PCE bowl w/ribbed back - green - very nice
- \_\_\_ 225. Peacocks PCE bowl w/ribbed back - blue - electric highlights
- \_\_\_ 226. Peacocks PCE bowl w/ribbed back - marigold
- \_\_\_ 227. Persian Garden 6" plate - purple - scarce little plate
- \_\_\_ **228. Leaf & Beads nut bowl - aqua opal - butterscotch, very scarce**
- \_\_\_ **229. Oriental Poppy 7 pc. water set - purple - nice set**
- \_\_\_ 230. Oriental Poppy 7 pc. water set - marigold - nice
- \_\_\_ 231. Good Luck ruffled bowl w/BW back - green
- \_\_\_ 232. Good Luck ruffled bowl w/BW back - purple
- \_\_\_ 233. Good Luck ruffled bowl w/BW back - marigold
- \_\_\_ 234. Stag & Holly giant rose bowl - marigold - scarce
- \_\_\_ 235. Captive Rose 9" plate - blue
- \_\_\_ 236. Captive Rose 9" plate - marigold - has very attractive pastel irid.
- \_\_\_ 237. Daisy & Drape flared out vase - aqua opal - butterscotch, nice
- \_\_\_ **238. Dragon & Lotus 3 in 1 edge bowl - lime green opal - very pretty irid.**
- \_\_\_ **239. Rose Show Variant ruffled bowl - renninger blue - rare bowl, highly desirable**
- \_\_\_ **240. Rose Show Variant ruffled bowl - marigold - pretty**
- \_\_\_ 241. Butterfly bonbon w/Threaded back - green - scarce
- \_\_\_ 242. Grape & Cable tankard water pitcher w/1 tumbler - purple - nice
- \_\_\_ 243. Vintage 7" plate - amethyst - nice
- \_\_\_ 244. Stippled Three Fruits PCE bowl w/ribbed back - green - scarce color, has bluish irid.
- \_\_\_ 245. Stippled Three Fruits PCE bowl w/ribbed back - green - has greenish/gold irid.
- \_\_\_ 246. Stippled Three Fruits PCE bowl w/ribbed back - blue - electric highlights
- \_\_\_ 247. Stippled Three Fruits PCE bowl w/ribbed back - marigold - pretty
- \_\_\_ 248. Grape & Cable fernery - marigold - minor pinpoint on top edge
- \_\_\_ 249. Fanciful 9" plate - purple - scarce
- \_\_\_ 250. Greek Key ruffled bowl w/BW back - purple - nice
- \_\_\_ **251. Blackberry Block tankard water pitcher - green - very rare pitcher, nice**
- \_\_\_ **252. Blackberry Block 7 pc. tankard water set - marigold - pretty set**
- \_\_\_ 253. Peacocks PCE bowl w/BW back - green - very pretty, scarce w/BW back
- \_\_\_ 254. Fenton's Peacock at Urn 8 ruffled bowl - green - nice
- \_\_\_ 255. Fenton's Peacock at Urn 8 ruffled bowl - amethyst - pretty
- \_\_\_ 256. Fenton's Peacock at Urn 8 ruffled bowl - marigold
- \_\_\_ 257. Fenton's Peacock at Urn 6 ruffled bowl - white - pretty
- \_\_\_ 258. Fenton's Peacock at Urn 6 ruffled bowl - blue
- \_\_\_ **259. Hearts & Flowers ruffled compote - green - super pretty, a great example of a scarce color**
- \_\_\_ **260. Hearts & Flowers ruffled compote - ice green - scarce color**
- \_\_\_ **261. Hearts & Flowers ruffled compote - ice blue - scarce color**
- \_\_\_ 262. Hearts & Flowers ruffled compote - blue - electric highlights
- \_\_\_ 263. Hearts & Flowers ruffled compote - purple
- \_\_\_ 264. Hearts & Flowers ruffled compote - aqua opal - nice
- \_\_\_ **265. Stippled Good Luck 9" plate w/ribbed back - blue - rare plate, nice**
- \_\_\_ **266. Stippled Good Luck 9" plate w/ribbed back - purple - very scarce**
- \_\_\_ **267. Stippled Good Luck 9" plate w/ribbed back - marigold - also scarce, nice**
- \_\_\_ 268. Persian Medallion hair receiver - white - scarce, very nice
- \_\_\_ 269. Persian Medallion rose bowl - white - also nice
- \_\_\_ 270. Orange Tree 6 pc. round punch set - blue - always desired
- \_\_\_ 271. Drapery 7 1/2" vase - ice green
- \_\_\_ **272. Stippled Peacocks ruffled bowl w/ribbed back - apple green - unusual color, very pretty, great piece!**
- \_\_\_ 273. Stippled Peacocks ruffled bowl w/ribbed back - blue
- \_\_\_ 274. Stippled Peacocks ruffled bowl w/ribbed back - marigold - nice
- \_\_\_ **275. Springtime water pitcher w/1 tumbler - green - very rare pitcher, highly desirable, nice**
- \_\_\_ **276. Springtime 7 pc. water set - marigold - pretty set, one tumbler has nick**
- \_\_\_ 277. Stag & Holly lg size ftd ruffled bowl - blue - pretty
- \_\_\_ **278. Stippled Grape & Cable ruffled bowl w/ribbed back - ice green - super rare & super pretty, Wow!**
- \_\_\_ **279. Stippled Grape & Cable Variant ruffled bowl w/ribbed back - sapphire - scarce, nice**
- \_\_\_ **280. Peacock at the Fountain butter dish - green - very rare color, nice**
- \_\_\_ 281. Peacock at the Fountain butter dish - lavender - unusual color
- \_\_\_ 282. Peacocks 9" plate w/plain back - green - has pretty gold irid.
- \_\_\_ 283. Peacocks 9" plate w/plain back - ice green - pretty
- \_\_\_ 284. Persian Medallion bonbon - red - scarce
- \_\_\_ 285. Persian Medallion bonbon - lime green - marigold overlay
- \_\_\_ 286. Floral & Grape water pitcher - blue
- \_\_\_ 287. Floral & Grape water pitcher - marigold
- \_\_\_ **288. Australian Thunderbird lg ruffled bowl - dark or purple - scarce**
- \_\_\_ **289. Stippled Good Luck PCE bowl w/ribbed back - renninger blue - scarce color**
- \_\_\_ 290. Stippled Good Luck PCE bowl w/ribbed back - blue - electric highlights
- \_\_\_ 291. Stippled Good Luck PCE bowl w/ribbed back - pastel marigold - lots of pink & yellow
- \_\_\_ 292. Grape & Cable bonbon - white - nice
- \_\_\_ 293. Stippled Strawberry PCE bowl w/BW back - green - very pretty
- \_\_\_ **294. Singing Birds mug - aqua opal - always desired, nice example**
- \_\_\_ 295. Singing Birds mug - white - pretty irid.
- \_\_\_ 296. Singing Birds mug - lavender - pretty, neat mug
- \_\_\_ 297. Singing Birds mug - green
- \_\_\_ 298. Singing Birds mug - purple - pretty
- \_\_\_ 299. Singing Birds mug - marigold
- \_\_\_ **300. STIPPLED STRAWBERRY RUFFLED BOWL W/ RIBBED BACK - ICE BLUE - FANTASTIC IRID., ANOTHER EXTREME RARITY, WOW!!**
- \_\_\_ **301. Stippled Strawberry ruffled bowl w/ribbed back-**

- lime green - super pretty w/great irid.**
- \_\_\_ 302. Stippled Strawberry ruffled bowl w/ribbed back - green - scarce, nice
- \_\_\_ 303. Stippled Strawberry ruffled bowl w/ribbed back - marigold
- \_\_\_ **304. Ten Mums tankard water pitcher w/1 tumbler - blue - very hard to find pitcher**
- \_\_\_ 305. Grape & Cable master IC bowl - white - nice
- \_\_\_ 306. Grape & Cable master IC bowl - purple
- \_\_\_ 307. Peacock & Grape 9" plate - marigold - very pretty
- \_\_\_ **308. Sunken Hollyhock Gone with the Wind lamp - marigold - quarter sized burst in shade, otherwise great condition, very rare, has pretty irid.**
- \_\_\_ 309. Stippled Three Fruits Medallion spt ftd ruffled bowl - aqua opal - scarce
- \_\_\_ **310. Stippled Peacocks PCE bowl w/ribbed back - green - little bit towards that apple color, pretty, not many of these around**
- \_\_\_ 311. Stippled Peacocks PCE bowl w/ribbed back - blue - has electric highlights
- \_\_\_ 312. Stippled Peacocks PCE bowl w/ribbed back - marigold - nice
- \_\_\_ **313. Pony 10 ruffled bowl - ice green - rare bowl, nice**
- \_\_\_ 314. Thumbprint & Ovals vase - marigold - manufacture open bubble on inside ruffle of vase
- \_\_\_ **315. Rose Show 9" plate - emerald green - very rare plate, highly desirable**
- \_\_\_ **316. Rose Show 9" plate - green - rare color**
- \_\_\_ **317. Rose Show 9" plate - lime green - super pretty irid., large polished chip on base, who cares on a plate like this**
- \_\_\_ **318. Rose Show 9" plate - ice green - scarce color**
- \_\_\_ **319. Rose Show 9" plate - ice blue - super pretty, chip on rose**
- \_\_\_ 320. Rose Show 9" plate - purple - minor nick on rose
- \_\_\_ 321. Rose Show 9" plate - blue - scarce, very nice
- \_\_\_ 322. Rose Show 9" plate - marigold - pretty
- \_\_\_ 323. Rose Show 9" plate - white
- \_\_\_ **324. Peacock at the Fountain water pitcher - white - scarce color, pretty**
- \_\_\_ **325. Peacock at the Fountain 4 pc. water set - green - rare color, very seldom sold**
- \_\_\_ 326. Peacock at the Fountain 7 pc. water set - blue - nice set
- \_\_\_ 327. Peacock at the Fountain 4 pc. water set - purple - nice
- \_\_\_ **328. Peacocks PCE bowl w/plain back - white - scarce, very nice**
- \_\_\_ **329. Orange Tree w/trunk 9" plate - green - super pretty plate in this rare color**
- \_\_\_ 330. Orange Tree 9" plate - white - pretty
- \_\_\_ 331. N's Stippled Peacock at Urn master IC bowl - marigold - dark, super
- \_\_\_ 332. Dandelion mug - purple
- \_\_\_ 333. Stippled Peacocks 9" plate w/ribbed back - blue - has electric highlights, scarce, nice
- \_\_\_ 334. Stippled Peacocks 9" plate w/ribbed back - marigold - super nice
- \_\_\_ 335. Grape Arbor hatshape - ice green - scarce, made from tumbler
- \_\_\_ 336. Grape Arbor hatshape - white - scarce, made from tumbler
- \_\_\_ **337. Concord 9" plate - green - rare plate, nice**
- \_\_\_ 338. Four Flowers 9" IC shaped bowl - purple - very scarce in this shape
- \_\_\_ 339. Peacocks ruffled bowl w/BW back - marigold - nice, scarce with this back
- \_\_\_ 340. Grape & Cable 7 pc. water set - purple
- \_\_\_ 341. Holly 9" plate - blue - nice
- \_\_\_ **342. Tree Trunk 6 1/2" squatty vase - white - scarce, nice**
- \_\_\_ 343. Stippled Good Luck ruffled bowl w/ribbed back - marigold
- \_\_\_ **344. Hearts & Flowers 9" plate w/ribbed back - lime green - very rare plate, highly desirable**
- \_\_\_ **345. Hearts & Flowers 9" plate w/ribbed back - white - another rare plate, pretty**
- \_\_\_ **346. Hearts & Flowers 9" plate w/ribbed back - green - rare color**
- \_\_\_ 347. Hearts & Flowers 9" plate w/ribbed back - purple - scarce, nice
- \_\_\_ 348. Hearts & Flowers 9" plate w/ribbed back - marigold - scarce
- \_\_\_ 349. Beaded Cable rose bowl - aqua opal
- \_\_\_ 350. Beaded Cable rose bowl - blue
- \_\_\_ 351. Raspberry milk pitcher - marigold
- \_\_\_ 352. Heart & Vine 9" plate - blue - scarce
- \_\_\_ 353. Fanciful ruffled bowl - white - pretty
- \_\_\_ 354. Grape & Cable powder jar - green - nice
- \_\_\_ 355. Grape Arbor 7 pc. tankard water set - marigold - pretty
- \_\_\_ 356. Basketweave Open Edge 2 sides up lg sized basket - ice green
- \_\_\_ 357. Stippled & Banded Grape & Cable dresser tray - marigold - very scarce in this shape
- \_\_\_ **358. Iris & Herringbone miniature cup & saucer - ruby flashed - very rare, not often sold, a great miniature**
- \_\_\_ **359. Iris & Herringbone miniature cup & saucer - lavender flashed - another fun set that is not often sold**
- \_\_\_ 360. Leaf Chain 9" plate - marigold - nice
- \_\_\_ 361. Basketweave Open Edge JIP basket - red
- \_\_\_ 362. Fenton's Peacock at Urn IC shaped bowl - blue - nice
- \_\_\_ 363. Fenton's Peacock at Urn IC shaped bowl - lime green - marigold overlay, nice, rare color
- \_\_\_ 364. Fenton's Peacock at Urn IC shaped bowl - marigold - crack in edge
- \_\_\_ 365. Drapery rose bowl - aqua opal - nice
- \_\_\_ **366. Peacock & Grape 3 in 1 edge bowl - lime green opal - scarce, nice**
- \_\_\_ 367. Inverted Strawberry powder jar - green - scarce
- \_\_\_ 368. Enameled Pretty Panels water pitcher - marigold - super pretty scarce pitcher
- \_\_\_ 369. Lotus & Grape ruffled bowl - green
- \_\_\_ 370. Grape & Cable pin tray - marigold
- \_\_\_ 371. Orange Tree w/trunk ruffled bowl - blue - nice
- \_\_\_ 372. Orange Tree w/trunk ruffled bowl - marigold
- \_\_\_ **373. Blackberry Spray ruffled hatshape - lime green opal - very scarce color**
- \_\_\_ 374. Grape & Cable PCE bowl w/BW back - green
- \_\_\_ 375. Grape & Cable PCE bowl w/BW back - marigold - super
- \_\_\_ **376. GOOD LUCK PCE BOWL W/RIBBED BACK - ICE BLUE - EXTREMELY RARE BOWL & PRETTY, A DANDY**
- \_\_\_ 377. Good Luck PCE bowl w/ribbed back - purple - nice
- \_\_\_ 378. Good Luck PCE bowl w/ribbed back - marigold - nice

**Seeck Auctions**  
**PO Box 377**  
**Mason City, Iowa**  
**50402**

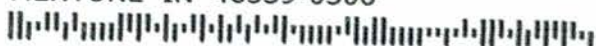
PRESORTED  
 FIRST CLASS MAIL  
 US POSTAGE  
 PAID  
 MAIL EXPEDITORS



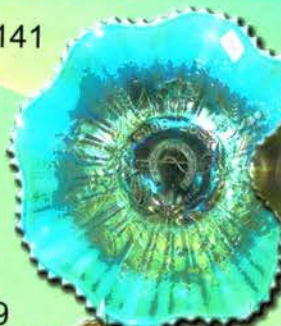
313

**Carnival Glass**  
**2015 Auction**  
**Sat. April 25 9:30 a.m.**  
**Embassy Suites Hotel**  
**Kansas City, Missouri**

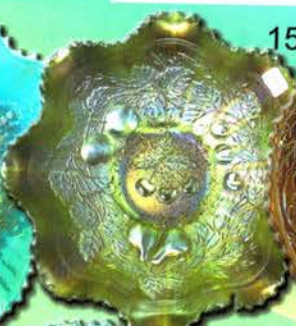
T6 P1 9  
 LEE MARKLEY  
 BOX 306  
 MENTONE IN 46539-0306



141



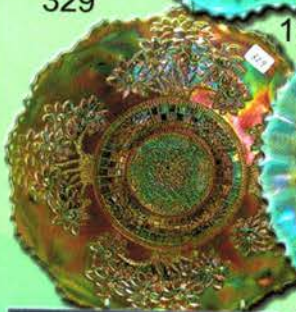
151



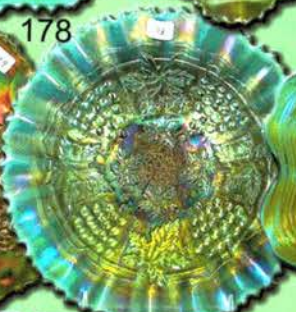
193



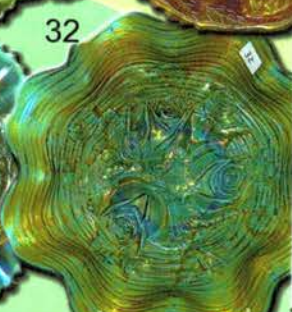
329



178



32



251



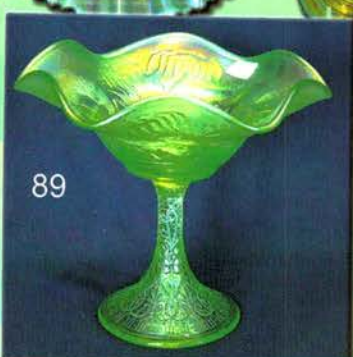
30



191



89



84

