



LOT# 10



LOT# 175



LOT# 105



LOT# 150



LOT# 190

BURNS

AUCTION SERVICE

CARNIVAL GLASS AUCTION

FRIDAY & SATURDAY,
APRIL 17 & 18, 2015

PREVIEW: FRIDAY AT 3:00 P.M.

AUCTION: 6:00 P.M. (LOTS #1-#215)

PREVIEW: SATURDAY AT 8:00 A.M.

AUCTION: 9:30 A.M. (LOTS #216 TO END)

at the

EMBASSY SUITES—PITTSBURGH AIRPORT

550 CHERRINGTON PARKWAY

CORAOPOLIS, PA 15108

(412) 269-9070

Going to be a busy year and our next venture will be an auction from a collection out of Kentucky. This was a sleeper collection that had been amassed over the last 20-25 years. The auction will be at the Embassy Suites/Pittsburgh Airport located in Coraopolis, PA. The hotel is located near the Pittsburgh Airport—the Thorn Run Road Exit off Business I-376. For reservations, call the motel direct at (412) 269-9070. Another option...there is a Motel 6 just down the road near the exit at 1170 Thorn Run Road, Coraopolis, PA (412) 269-0990. The auction will be on Auction Flex, as well as Auction Zip ID#29661. All auction flex bids are due by Noon on Friday, April 17th. All absentee bidders note, if you are successful, I will mail the item and then call you with your total cost owed. All mailings will carry a Minimum \$5 handling charge towards packing supplies, etc. All dealers, please bring valid tax information. All photos and listings can be viewed at www.necga.com. Click on Carnival glass links page and look for Burns Auction. For further information, contact Tom Burns, 183 Sunnyside Drive, Clermont, FL 34711. Tel. (407) 592-6552. Thanks.

- | | |
|---|--|
| <p>___ 1. Golden Wedding 1/10 Pint "Nip" Bottle – Mari. (scarce miniature)</p> <p>___ 2. Golden Wedding Full Pint Bottle – Mari.</p> <p>___ 3. Sitting Dog Figural Candy Container – Mari. (very scarce; has chain necklace; nice irid.)</p> <p>___ 4. Pr. Westmoreland Strutting Peacocks Covered Sugar and Creamer and Estate Creamer – (Pr.) Amyth., (1) Mari. (selling for 1 money)</p> <p>___ 5. WESTMORELAND FILE AND FAN STEMMED 6 RUFFLED COMPOTE – BLUE OPAL. (VERY SCARCE AND DESIRABLE PASTEL; TOUGH TO FIND)</p> <p>___ 6. 10" Tall Westmoreland Corinth J.I.P. Vase – Amber (desirable shape)</p> <p>___ 7. 8 1/3" Tall Westmoreland Corinth J.I.P. Vase – Amyth (desirable shape)</p> <p>___ 8. Westmoreland Louisa ftd. Rose Bowl – Amyth. (heavy piece of glass)</p> <p>___ 9. 7 3/4" Westmoreland Smooth Rays Deep Round Bowl – Amyth.</p> <p>___ 10. 11" DUGAN FARMYARD BOWL WITH 3 IN 1 EDGE AND JEWEL HEART EXT. – AMYTH. (VERY RARE AND VERY DESIRABLE; REALLY NICE GOLD IRID. WITH RED AND BLUE HIGHLIGHTS)</p> <p>___ 11. 10 3/4" Dugan Interior Smooth Rays Lg. 8 Ruffled Bowl with J.H. Ext. – Purp. (very desirable with excellent irid.; a beaut!)</p> <p>___ 12. 11 5/8" Dugan Victorian Lg. 8 Ruffled Bowl – Amyth. (rare item with typical satiny finish)</p> <p>___ 13. 8 1/4" Dugan Paneled Cherries 3 ftd. Tri-Cornered Crimped Edge Bowl – Purp. (rare shape; tough color with a bright satiny finish)</p> <p>___ 14. 7 3/8" Dugan Six Petals 6 Ruffled Bowl – Purp. (nice color and irid.; has a chip on the base)</p> <p>___ 15. 9" DUGAN GRAPE ARBOR LG. DEEP ROUND 4 FTD. BOWL WITH I.F.F. EXT. – BLUE (RARE COLOR FOR THIS ITEM; TOUGH TO FIND; SATINY FINISH)</p> <p>___ 16. 9" DUGAN FLOWERS AND FRAMES DOMED 10 RUFFLED BOWL – PURP. (VERY SCARCE; VERY DESIRABLE; REALLY NICE IRID.)</p> <p>___ 17. 6 3/4" Dugan Bellflower 8 Ruffled Bowl – Purp. (super irid.; desirable)</p> <p>___ 18. Dugan Nautilus domed Novelty Creamer – Purp. (desirable novelty; nice color and irid.)</p> <p>___ 19. 5 3/4" Dugan Ski Star 6 Ruffled Sauce – Amyth. (scarce; nice irid.)</p> | <p>___ 20. 7 1/2" TALL DUGAN FORMAL HATPIN HOLDER – PURP. (RARE AND VERY DESIRABLE; GREAT COLOR AND IRID.)</p> <p>___ 21. 7 1/4" TALL DUGAN FORMAL HATPIN HOLDER – LT. MARI. (ANOTHER TOUGH ITEM TO FIND WITH BRIGHT IRID.)</p> <p>___ 22. 10 3/4" Tall Dugan Target Swung Vase – Purp. (scarce color; nice)</p> <p>___ 23. (1) 7 1/2" Tall and (1) 6 7/8" Tall Dugan Lattice and Points Swung Vases – Amyth. (selling so much ea. x 2)</p> <p>___ 24. 5 1/2" Tall x 5 1/2" Top Diam. Dugan Many Ribs 6 Ruffled Vase – Purp. (scarce)</p> <p>___ 25. 12" TALL DUGAN LINED LATTICE SWUNG VASE – PURP. (SWUNG TALL; NICE COLOR AND IRID.)</p> <p>___ 26. 9 1/4" Tall Dugan Lined Lattice Swung Vase – Purp. (super irid.; bright and nice)</p> <p>___ 27. 9 7/8" Tall Dugan Lined Lattice Swung Vase – Purp. (scarce; nice color)</p> <p>___ 28. 10 1/4" Tall Dugan Lined Lattice Swung Vase – odd Amyth. (odd base color for this pattern; unusual)</p> <p>___ 29. (1) 8 3/4" Tall Twigs Swung Bud Vase and (1) 9" Tall Twigs Swung Bud Vase – (1) Mari. (1) Amyth. (selling pair for one money)</p> <p>___ 30. DUGAN PERSIAN GARDEN 10 RUFFLED FRUIT BOWL AND RUFFLED BASE – MARI. (PERFECT AND NICE; AVERAGE COLOR AND IRID.; NOT SEEN TOO OFTEN)</p> <p>___ 31. (2) 8 1/2" Dugan Windflower low 10 Ruffled Bowls – Mari. (selling 2 for 1)</p> <p>___ 32. (2) 7" Dugan Apple Blossom 8 Ruffled Bowls – Mari. (selling 2 for 1)</p> <p>___ 33. Dugan Windflower Handled Nappy – Mari.</p> <p>___ 34. (2) Dugan Thumbprint Stemmed 8 Ruffled Compotes – Mari. (selling 2 for 1)</p> <p>___ 35. Dugan Petal and Fan 6 pc. Ruffled Berry Set with J.H. Ext. – P. Opal. (really nice set with great color & opal.)</p> <p>___ 36. 11" Dugan Ski Star Lg. 8 Ruffled Bowl with Compass Ext. – P. Opal. (scarce with the 8 ruffles)</p> <p>___ 37. 10 3/4" Dugan Ski Star Lg. 6 Ruffled Bowl with Compass Ext. – P. Opal. (odd opal. effect)</p> <p>___ 38. (2) Dugan Vintage Grape Covered Powder Jars – Mari. (selling 2 for 1)</p> <p>___ 39. (1) Dugan Rose Wreath Rose Bowl and (2) Dugan Mini. Basketweave Handled Baskets – Mari. (selling 3 for 1)</p> |
|---|--|

- ___40. 9" Dugan Fanciful I.C. Shaped Bowl / Plate – White (scarce; frosty)
- ___41. Dugan Grape Delight 6 ftd. Ruffled Rose Bowl – White (frosty; nice irid.)
- ___42. Dugan Grape Delight 6 ftd. Rose Bowl – Dk. Mari. (super color and irid.)
- ___43. (2) Dugan Grape Delight 6 ftd. Ruffled Rose Bowls – (1) Amyth., (1) Black Amyth. (selling so much each x 2)
- ___44. Dugan Grape Delight 6 ftd. Nut Bowl – Blue (satiny finish)
- ___45. **3 ¼" TALL X 5 ¼" TOP DIAM. DUGAN LATTICE AND POINTS SQUATTY 8 RUFFLED HAT – P. OPAL. (VERY DESIRABLE; GREAT SIZE WITH EXCELLENT OPAL.)**
- ___46. 7 5/8" Dugan Lattice and Points low 8 Ruffled Bowl / Plate – Purp. (scarce with a nice bright finish)
- ___47. Dugan Honeycomb Rose Bowl – P. Opal. (has to be one of the better examples I've seen)
- ___48. Dugan Constellation 6 Ruffled Stemmed Compote – White (great irid.)
- ___49. (2) Dugan Question Mark Stemmed 2 Handled Bon Bons – (1) Lt. Amyth.; (1) Black Amyth. (selling 2 for 1)
- ___50. **DUGAN G & C PERFUME BOTTLE AND STOPPER – MARI. (RARE AND VERY DESIRABLE; GREAT COLOR AND IRID.; WELL MATCHED)**
- ___51. Dugan Thumbprint Stemmed 8 Ruffled Compote – Dk. P. Opal. (super example)
- ___52. Dugan Beaded Panels Stemmed Tri-Cornered Crimped Edge Compote – P. Opal. (nice opal.)
- ___53. 7" Dugan Daisy Dear low 8 Ruffled Hat / Bowl – Aqua / Mari. (actually quite a scarce item in this color)
- ___54. Dugan Folding Fan Stemmed 2 sided 6 Ruffled Crimped Edge Compote – Dk. P. Opal. (super example)
- ___55. 6 ¾" Dugan Four Flowers Flat Plate with Plain Ext. – Purp. (very scarce with gold highlights)
- ___56. (2) Dugan Stork in the Rushes Tumblers with Beaded Band – Blue (selling 2 x the money)
- ___57. Dugan Fishermans Handled Mug – Purp.
- ___58. Dugan Long Thumbprint Breakfast Sugar and Creamer and (1) Dugan Beaded Basket – Mari. (selling for 1 money)
- ___59. (1) 6 ¾" Dugan Fishscale and Beads low Ruffled Bowl and (1) Dugan Paneled Cherries 3 ftd. 10 Ruffled Bowl – Mari. (selling 2 for 1)
- ___60. **8 ¼" DUGAN SKI STAR DOMED HANDGRIP PLATE – P. OPAL. (GREAT OPAL. AND DARK MARI. OVERLAY)**
- ___61. 9" Dugan Single Flower Ext. 10 Ruffled Bowl – P. Opal. (nice opal.)
- ___62. (1) 10 5/8" Tall Dugan Pulled Loop Swung Vase and (1) 9 ¼" Tall Dugan Target Swung Vase – (1) P. Opal. and (1) Mari. (selling 2 for 1)
- ___63. 7 ¾" Dugan Single Flower Framed Tri-Cornered Crimped Edge Bowl – P. Opal. (scarce shape)
- ___64. 12 ¾" Tall Dugan Pulled Loop Lg. Swung Vase – Clear Opal. (not iridized; great opal.)
- ___65. (1) Mosser Pony Flat Plate and (1) Mosser Pony 6 Ruffled Bowl – Mari. (reissues; selling 2 for 1)
- ___66. Imperial Star and File Creamer and 2 Handled Open Sugar – Mari. (selling pair for 1 money)
- ___67. Imperial Flute Toothpick Holder – Purp. (nice color)
- ___68. Imperial Flute Toothpick Holder – Green (sorta Helios)
- ___69. Imperial Flute Toothpick Holder – Dk. Mari. (nice color)
- ___70. **12" TALL X 3 7/8" BASE IMPERIAL RIPPLE MID-SIZE SWUNG VASE – PURP. (ODD SIZE WITH GREAT COLOR AND IRID.; NICE)**
- ___71. 14 ¾" Tall x 3 7/8" Base Imperial Ripple Mid-size Swung Vase – Mari. (really nice color and size)
- ___72. 9 3/8" Tall x 3 3/8" Base Imperial Ripple Swung Vase – Amber (nice base color)
- ___73. (1) 9" Tall x 2 7/8" Base Imperial Ripple Swung Vase and (1) 6 ½" Tall x 2 ½" Base Imperial Ripple Mini. Swung Vase – Mari. (selling 2 for 1)
- ___74. (1) 4 ½" Tall x 3 ¼" Diam. Imperial Mini. Morning Glory Swung Vase and (1) 8 3/8" Tall Mini. Morning Glory Swung Vase – Mari. (selling 2 for 1)
- ___75. 9 ¼" Tall Imperial Beaded Bullseye Swung Vase – Purp. (odd finish on the ext.; scarce)
- ___76. (2) 11" Tall Imperial Beaded Bullseye Swung Vase – Dk. Mari. (selling 2 times the money)
- ___77. 4 ½" Tall x 4 1/8" Top Diam. Imperial Mini. Morning Glory and Drape Swung Vase – Dk. Mari. (great example; great color)
- ___78. **11 ¼" TALL WITH AT LEAST A 5 ¾" FLARED DIAM. IMPERIAL FREEFOLD SWUNG VASE – PURP. (ODD SWING; GREAT COLOR & IRID.; NICE ITEM)**
- ___79. 12 ½" Tall Imperial Freefold Swung Vase – Purp. (nice color)
- ___80. **(1) 19 ¼" TALL AND (1) 18" TALL IMPERIAL INT. WIDE PANEL SWUNG FUNERAL VASES WITH 5 3/8" DIAM. BASE – MARI. / CLEAR (RARE PAIR; SELLING SO MUCH EACH)**
- ___81. Imperial Grape Water Carafe – Purp. (great color and irid.)
- ___82. Imperial Grape Water Carafe – Purp. (scarce; nice color and highlights)
- ___83. Imperial Grape Water Carafe – Amyth. (scarce; nice color and irid.)
- ___84. Imperial Grape Handled Flower Basket – Smoke (scarce base color)
- ___85. 9 ½" Tall x 5 9/16" Base Imperial Zipper Loop Kerosene Lamp – Smoke (very rare but has a 1 ½" check in base)
- ___86. **8" TALL X 4 ¾" BASE IMPERIAL ZIPPER LOOP KEROSENE LAMP – DK. MARI. (RARE AND DESIRABLE; DARK COLOR AND IRID.)**
- ___87. Imperial Cockatoo Lg. Hanging Wall Vase – Mari. (scarce item)
- ___88. 8 7/8" Imperial Pansy 8 Ruffled Bowl – Purp. (has some blue highlights)
- ___89. 9" Imperial Pansy 8 Ruffled Bowl – Purp. (gold highlights)

- ___ 90. **IMPERIAL JEWELS STRETCH HANDLED BREAKFAST OPEN SUGAR AND CREAMER – PURP. (REALLY RARE AND DESIRABLE PAIR; CREAMER HAS PLATINUM FINISH – VERY NICE)**
- ___ 91. 2 ½" x 5" Imperial Iron Cross low 6 Ruffled Rose Bowl – signed – Honey Mari. (neat item; nice pastel finish)
- ___ 92. (1) Imperial Grape Wine Glass; (1) Imperial Windmill Tumbler and (1) Imperial Grape Tumbler – Mari. (selling 3 for 1)
- ___ 93. (1) Imperial Lustre Rose ftd. Fernery and (1) 9" Imperial Open Rose 8 Ruffled Bowl – Mari. (selling 2 for 1)
- ___ 94. (1) 9" Imperial Embossed Scroll Lg. 8 Ruffled Bowl; (1) 7 ¼" Star Medallion Flared Bowl and (1) 9" Imperial Flute 8 Ruffled Bowl – Mari. (selling 3 for 1)
- ___ 95. **9" IMPERIAL STAR OF DAVID 8 RUFFLED BOWL – PURP. (ABSOLUTELY SUPER ITEM WITH A BRILLIANT FINISH)**
- ___ 96. 8" Imperial Embossed Scroll 8 Ruffled Bowl – Purp. (absolutely super example)
- ___ 97. (2) 10" Tall Imperial Swirl Panel Swung Vases – one with 5 ½" Flare – Mari. (selling 2 for 1)
- ___ 98. (1) Imperial Waffle Block Handled Flower Basket and (1) Imperial Grape Stemmed Ruffled Compote – Mari. (selling 2 for 1)
- ___ 99. Imperial Diamond and Sunburst Wine Decanter and Stopper – Mari. (nice color)
- ___ 100. Imperial Crab Claw 5 pc. Water Set – Dk. Mari. (scarce set; nice color)
- ___ 101. **CAMBRIDGE INVERTED STRAWBERRY COVERED POWDER JAR – GREEN (VERY SCARCE; NICE COLOR AND IRID.)**
- ___ 102. Cambridge Inverted Strawberry Covered Powder Jar – Mari. (very tough item to find; nice)
- ___ 103. 7 ½" M'burg Little Stars 6 Ruffled Bowl – Amyth. (scarce; nice)
- ___ 104. 7 ½" M'burg Little Stars 6 Ruffled Bowl – Mari. (nice)
- ___ 105. **M'BURG MARYLYN 7 PC. WATER SET – AMYTH. (SUPER SET; NICE PITCHER; TUMBLERS HAVE A RADIUM FINISH)**
- ___ 106. 7" M'burg Holly Sprig I.C. Shaped Bowl – Amyth. (radium and nice)
- ___ 107. 8 3/8" M'burg Grape Wreath Variant 6 Ruffled Bowl – Amyth. (radium and nice)
- ___ 108. 8 3/8" M'burg Holly Sprig Variant 6 Ruffled Crimped Edge Bowl – Amyth. (really nice radium example)
- ___ 109. 9 ¾" M'burg Whirling Leaves 6 Ruffled Bowl – Amyth. (radium and nice)
- ___ 110. **10" M'BURG MANY STARS BOWL WITH 3 IN 1 EDGE AND A 5 POINTED STAR – AMYTH. (RADIUM AND RARE; GREAT COLOR & DETAIL)**
- ___ 111. **9 ½" M'BURG MANY STARS I.C. SHAPED BOWL WITH 6 POINTED STAR – GREEN (REALLY NICE RADIUM FINISH; VERY ATTRACTIVE)**
- ___ 112. **10" M'BURG MANY STARS 6 RUFFLED BOWL WITH 5 POINTED STAR – GREEN (A DARKER RADIUM FINISH; NICE)**
- ___ 113. 9 ¾" M'burg Rays and Ribbons Bowl with 3 in 1 Edge – Green (satiny and nice)
- ___ 114. 10" M'burg Rays and Ribbons 6 Ruffled Bowl – Amyth. (satiny finish)
- ___ 115. **9 ¼" M'BURG PEACOCK BOWL WITH ODD 6 RUFFLED CRIMPED EDGE – GREEN (HAS NO BEE & NO BEADING; HAS AN ODD RUFFLE; RADIUM)**
- ___ 116. 9 ¼" M'burg Peacocks Lg. Flared Master Berry Bowl – Amyth. (radium and scarce)
- ___ 117. 10" M'burg Primrose 6 Ruffled Bowl – Green (nice color)
- ___ 118. 10" M'burg Holly Whirl 6 Ruffled Bowl – Mari. (satiny finish)
- ___ 119. 10" M'burg Rosalind Lg. 6 Ruffled Bowl – Green (scarce; satiny)
- ___ 120. **9" M'BURG FLEUR DE LIS DOMED I.C. SHAPED BOWL – GREEN (SORTA RADIUM; SCARCE SHAPE – NICE COLOR)**
- ___ 121. M'burg Strawberry Wreath Stemmed 6 Ruffled Compote – Green (radium; very scarce in this color)
- ___ 122. **M'BURG LEAF AND LITTLE FLOWERS 6 RUFFLED MINI. COMPOTE – AMYTH. (VERY SCARCE; RADIUM AND NICE)**
- ___ 123. M'burg Leaf and Little Flowers 6 Ruffled Mini. Compote – Mari. (very scarce; radium and nice)
- ___ 124. **10" M'BURG SEAWEED BOWL WITH 3 IN 1 EDGE – MARI. (NICE LARGE SATINY BOWL; VERY SCARCE)**
- ___ 125. **8 ¾" M'BURG TROUT AND FLY BOWL WITH 3 IN 1 EDGE – HOREHOUND (RARE BASE COLOR; NICE SATINY FINISH)**
- ___ 126. **8 ½" M'BURG TROUT AND FLY I.C. SHAPED BOWL – GREEN (AN EXCELLENT EXAMPLE; GREAT DETAIL AND IRID.)**
- ___ 127. 8 7/8" M'burg Trout and Fly Bowl with 3 in 1 Edge – Mari. (very scarce; nice satiny finish)
- ___ 128. **9 ½" M'BURG ZIG ZAG TRI-CORNERED CRIMPED EDGE BOWL – GREEN (RARE IN THIS COLOR; TOUGH TO FIND)**
- ___ 129. 9 ¾" M'burg Zig Zag Bowl with 3 in 1 Edge – Amyth. (very scarce; nice example)
- ___ 130. **M'BURG HOBNAIL SPITTOON – AMYTH. (EXCELLENT EXAMPLE; NICE COLOR AND IRID.)**
- ___ 131. **M'BURG HOBNAIL SPITTOON – AMYTH. (ANOTHER NICE SATINY EXAMPLE; RARE AND DESIRABLE)**
- ___ 132. M'burg Hobnail Rose Bowl – Mari. (excellent example; nice color)
- ___ 133. **M'BURG SWIRL HOBNAIL SPITTOON – DK. MARI. (NICE DARK EXAMPLE; NICE SHAPE – VERY DESIRABLE)**
- ___ 134. **9 ¾" TALL M'BURG SWIRL HOBNAIL SWUNG VASE – GREEN (REALLY NICE EXAMPLE WITH GREAT COLOR)**
- ___ 135. **6" M'BURG "THE GREAT HOUSE OF ISAAC BENESCH AND SONS" 6 RUFFLED BOWL – AMYTH. (VERY SCARCE AND ALWAYS DESIRABLE; NICE EXAMPLE)**
- ___ 136. 9 ¼" M'burg Nesting Swan 6 Ruffled Bowl – Amyth. (radium and very desirable; nice example)

- ___ 137. 10" M'burg Nesting Swan 6 Ruffled Bowl – Green (scarce; nice)
- ___ 138. M'burg Diamond Handled Water Pitcher and (2) Tumblers – Green (selling as a 3 pc. set; nice color and irid.)
- ___ 139. 7" Fenton Peacock and Dahlia 6 Ruffled Bowl – Blue (satiny; scarce)
- ___ 140. **7 ½" FENTON LIONS FLAT PLATE – MARI. (RARE AND VERY DESIRABLE; EXCELLENT EXAMPLE; SUPER)**
- ___ 141. 6 ½" Fenton Blackberry Lg. 2 Row Open Edge 6 Ruffled Hat – Mari. / Vaseline (very scarce; nice)
- ___ 142. 5 ½" Fenton Blackberry Lg. 2 Row Open Edge 6 Ruffled Hat – Green (scarce; nice color)
- ___ 143. 5 ½" Fenton Blackberry Lg. 2 Row Open Edge 6 Ruffled Hat – Amyth. (scarce; nice color)
- ___ 144. (1) Fenton Blackberry Lg. 2 Row Open Edge 6 Ruffled Hat – Mari. and (1) Fenton 2 Row Open Edge 2 sided Basketweave Hat – Mari. / Vaseline (selling 2 for 1)
- ___ 145. **FENTON 2 ROW OPEN EDGE J.I.P. BASKETWEAVE HAT – RED (SCARCE; NICE COLOR)**
- ___ 146. Fenton Blackberry Spray 4 sided Square Hat – Red (sorta silvery with great red color)
- ___ 147. Fenton Orange Tree Standard Flared Mug – Dk. Amber (really odd base color)
- ___ 148. **10" TALL FENTON FINE RIB STANDARD SWUNG VASE – RED (NICE EXAMPLE; VERY SCARCE)**
- ___ 149. 10 ¼" Tall Fine Rib Standard Swung Vase – Powder Blue / Mari. (odd and scarce base color)
- ___ 150. **16 ½" TALL X 7 7/8" TOP DIAM. X 5 1/8" BASE FENTON DIAMOND RIB SQUATTY SWUNG FUNERAL VASE – DK. MARI. (VERY RARE AND VERY DESIRABLE; AN UNDERSIZED EXAMPLE IN A RARE COLOR; NICE)**
- ___ 151. 10 3/8" Tall Fenton Diamond Rib Standard Swung Vase – Mari. (nice color)
- ___ 152. 10 ¾" Tall Fenton Diamond Rib Standard Swung Vase – Amyth. (nice color)
- ___ 153. 7 ¼" Tall Fenton Long Thumbprint Squatty Swung Vase – Green (nice size)
- ___ 154. 9 ¾" Tall Fenton Boggy Bayou Swung Vase – Green Opal. (not iridized; great opal.)
- ___ 155. **FENTON KITTENS 4 SIDED BOWL WITH 4 SETS OF CATS – BLUE (RARE AND DESIRABLE; REALLY NICE SATINY FINISH)**
- ___ 156. (2) Fenton Kittens 4 sided Bowls – Mari. (selling 2 x the money; nice)
- ___ 157. Fenton Kittens 2 sided Banana Dish – Mari. (nice average color)
- ___ 158. **FENTON KITTENS ROUND CEREAL BOWL – MARI. (SCARCE; NICE COLOR)**
- ___ 159. (2) Fenton Kittens 6 Ruffled Bowls – Dk. Mari. (selling 2 x the money; nice)
- ___ 160. **2 ¾" TALL FENTON KITTENS ODD RUFFLED TOOTHPICK HOLDER – BLUE (VERY SCARCE AND VERY DESIRABLE; NICE)**
- ___ 161. 2 5/8" Tall Fenton Kittens 4 Ruffled Toothpick Holder – Mari. (scarce; nice color)
- ___ 162. **FENTON KITTENS HANDLED CUP AND SAUCER – DK. MARI. (VERY SCARCE AND DESIRABLE; NICE DARK SET)**
- ___ 163. Fenton Kittens Handled Cup and Saucer – Mari. (very scarce and desirable)
- ___ 164. Fenton Orange Tree Handled Loving Cup – Mari. (scarce; nice average color and irid.)
- ___ 165. Fenton Orange Tree Lg. Ruffled 3 ftd. Fruit Bowl – Blue (really nice example; Elec. Blue Highlights)
- ___ 166. Fenton Orange Tree Lg. Ruffled 3 ftd. Fruit Bowl – Dk. Mari. (nice color and irid.)
- ___ 167. (2) Fenton Orange Tree Covered Powder Jar – Blue (selling so much each for the pair; one base has spotty irid.)
- ___ 168. (2) Fenton Orange Tree Covered Powder Jar – Mari. (selling so much each for the pair; one lighter)
- ___ 169. (2) Fenton Flowers (Orange Tree) 3 ftd. Rose Bowls – (1) Blue, (1) Mari. (the Blue example is really nice; selling 2 for 1)
- ___ 170. **FENTON FOOTED ORANGE TREE HATPIN HOLDER – BLUE (PERFECT CONDITION WITH EXCELLENT ELEC. BLUE HIGHLIGHTS)**
- ___ 171. 9" Fenton Orange Tree with Trunk 6 Ruffled Bowl and a 9" Fenton Holly 6 Ruffled Bowl – Clamb. (selling 2 times the money)
- ___ 172. (1) 11 ½" Tall and (1) 11" Tall Fenton April Showers Swung Vase – Blue (selling 2 times the money)
- ___ 173. (1) 13" Tall Fenton April Showers Swung Vase and (1) 10 ½" Tall Fenton April Showers Swung Vase – Green (selling 2 times the money)
- ___ 174. (2) 10" Tall Fenton April Showers Swung Vases – Amyth. (selling 2 times the money)
- ___ 175. **19" TALL X 7 ¾" TOP DIAM. X 5 1/8" BASE FENTON RUSTIC SWUNG FUNERAL VASE WITH PLUNGER BASE – AMYTH. (RARE AND VERY DESIRABLE; GREAT BASE COLOR AND IRID.)**
- ___ 176. 18 ½" Tall x 4 ¼" Base Fenton Rustic Mid-size Swung Vase with T.C.E. – Blue (really attractive example; great size)
- ___ 177. 17" Tall x 4 ¼" Base Fenton Rustic Mid-size Swung Vase – Green (another nice item; nice dark color)
- ___ 178. 16" Tall x 4 1/8" Base Fenton Rustic Mid-size Swung Vase with T.C.E. – Mari. (scarce; nice color)
- ___ 179. 9" Tall Fenton Knotted Beads Swung Vase with T.C.E. – Blue (really nice example)
- ___ 180. 15 7/8" Tall Fenton Diamond Point Columns Mid-size Swung Vase – Green (nice color with a nice finish)
- ___ 181. (2) 14 ½" - 14 ¾" Tall Fenton Diamond Point Columns Mid-size Swung Vases – (1) Blue; (1) Mari. (selling 2 x the money)
- ___ 182. 11 ¾" Tall Fenton Knotted Beads Swung Vase – Green (very scarce color; nice example)

- ___ 183. 11 1/2" Tall Fenton Plume Panels odd Swung Vase – Blue (odd opening; neat)
- ___ 184. (1) 10 3/4" and (1) 10 1/4" Tall Fenton Plume Panels Swung Vases – Green (selling 2 x the money)
- ___ 185. 10 1/4" Fenton Rustic Standard Swung Flared Vase – Green (nice color)
- ___ 186. 12" Tall Fenton Fine Rib Mid-size Swung Vase – Blue
- ___ 187. (1) 9 3/4" Tall and (1) 10 1/2" Tall Fenton Fine Rib Standard Swung Vases – Blue (selling 2 x the money)
- ___ 188. (1) 10" Tall Fenton Long Thumbprint Swung Vase and (1) 9" Tall Fenton Wide Panel Swung Vase – (1) Blue; (1) Mari. (selling 2 x the money)
- ___ 189. (1) 6 3/8" Fenton Pine Cone Flat Plate with Plain Ext. and (1) 6 1/4" Fenton Persian Medallion Plate – Mari. (selling 2 for 1)
- ___ 190. **FENTON MILADY 7 PC. TANKARD WATER SET – BLUE (RARE AND VERY DESIRABLE SET; WELL MATCHED)**
- ___ 191. (2) Fenton Butterfly and Berry Tumblers – (1) Blue; (1) Green (selling 2 for 1; Green one is tough)
- ___ 192. Fenton Iris Buttermilk Goblet – Amyth. (nice color)
- ___ 193. Fenton Iris Stemmed 6 Ruffled Compote – Dk. Mari. (dark color)
- ___ 194. Fenton Iris Stemmed 6 Ruffled Compote – Pastel Mari. (scarce item)
- ___ 195. Fenton Panther 7 pc. ftd. Ruffled Berry Set – Dk. Mari. (well matched set)
- ___ 196. Fenton Stream of Hearts Stemmed 6 Ruffled Compote – Dk. Mari. (excellent example with dark color)
- ___ 197. Fenton Persian Medallion Lg. Stemmed 6 Ruffled Crimped Edge Compote – Mari. (scarce)
- ___ 198. Fenton Persian Medallion Small Stemmed 6 Ruffled Compote – Blue (very scarce)
- ___ 199. Fenton Bird and Cherries Stemmed 6 Ruffled Compote – Mari. (scarce)
- ___ 200. **11" FENTON STAG AND HOLLY LG. BALL FTD. 8 RUFFLED BOWL – MARI. / AQUA (RARE BASE COLOR WITH A DARK MARI. OVERLAY)**
- ___ 201. 10 1/2" Fenton Stag and Holly Lg. ball ftd. 8 Ruffled Bowl – Dk. Mari.
- ___ 202. 11 1/4" Fenton Stag and Holly Lg. ball ftd. 8 Ruffled Bowl – Mari.
- ___ 203. 10 1/2" Fenton Stag and Holly Lg. ball ftd. 8 Ruffled Bowl – Blue (nice color; spotty in center)
- ___ 204. 7 3/4" Fenton Stag and Holly spatula ftd. 8 Ruffled Bowl – Mari. (nice color)
- ___ 205. **FENTON WINE AND ROSES 8 PC. CIDER SET – MARI. (VERY SCARCE PITCHER WITH NICE COLOR)**
- ___ 206. Fenton Vintage Grape small size Single Lily Epergne – Amyth. (scarce)
- ___ 207. Fenton Vintage Grape small size Single Lily Epergne – Blue (scarce)
- ___ 208. 8 3/4" Fenton Ribbon Tie Bowl with 3 in 1 Edge – Blue
- ___ 209. 8 1/2" Fenton Ribbon Tie Bowl with 3 in 1 Edge – Amyth.
- ___ 210. **10" FENTON 10 MUMS 6 RUFFLED BOWL – GREEN (VERY SCARCE; TOUGH TO FIND)**
- ___ 211. 10 1/4" Fenton Persian Medallion Lg. 6 Ruffled Bowl – Amyth. (very attractive and very scarce item; nice)
- ___ 212. 10 3/8" Fenton Little Flowers Lg. 6 Ruffled Bowl – Green (satiny finish)
- ___ 213. (1) 8 1/2" Fenton Little Flowers Deep Round Flared Master Berry Bowl and (1) 5 1/8" Fenton Little Flowers Round Berry Bowl – Blue (both match; very attractive)
- ___ 214. 8" Fenton Persian Medallion I.C. Shaped Bowl with Berry Ext. – Blue (scarce; sorta silvery)
- ___ 215. Fenton Lattice and Grape 7 pc. Tankard Water Set – Dk. Mari. (very attractive and well matched set)

Start of 2nd Session

- ___ 216. 8 1/4" Fenton Orange Tree I.C. Shaped Bowl – Elec. Blue (super highlights; very attractive)
- ___ 217. **8 3/4" FENTON PEACOCK AT THE URN 8 RUFFLED BOWL – AMYTH. (VERY SCARCE BASE COLOR; REALLY NICE)**
- ___ 218. 8 3/8" Fenton Peacock at the Urn 8 Ruffled Bowl – Blue (nice color)
- ___ 219. 9" Fenton Peacock at the Urn 8 Ruffled Bowl – Mari. (nice color)
- ___ 220. **FENTON PEACOCK AT THE URN STEMMED 6 RUFFLED COMPOTE – MARI. / VASELINE (RARE AND DESIRABLE BASE COLOR; NICE)**
- ___ 221. Fenton Peacock at the Urn Stemmed 6 Ruffled Compote – Mari. / Vaseline (rare and desirable base color; nice)
- ___ 222. Fenton Peacock at the Urn Stemmed 6 Ruffled Compote – Mari. / Vaseline (rare and desirable base color; nice)
- ___ 223. Fenton Peacock at the Urn Stemmed Round Flared Compote – Lime Green / Mari. (very scarce; also glows; nice)
- ___ 224. 9" Fenton Autumn Acorn 6 Ruffled Bowl – Blue (has a great bronze finish)
- ___ 225. **FENTON HORSEHEAD MEDALLION 3 FTD. ROUND FLARED NUT BOWL – LIME GREEN VASELINE / MARI. (ALWAYS A DESIRABLE & COLLECTIBLE ITEM; NICE COLOR)**
- ___ 226. Fenton Mini. Blackberry Compote and Fenton Holly 6 Ruffled Compote – Blue (selling 2 for 1; nice items)
- ___ 227. (2) 8 3/4" Fenton Thistle 6 Ruffled Bowls – Amyth. (selling 2 x the money)
- ___ 228. 7 7/8" Fenton Thistle I.C. Shaped Bowl – Amyth. (satiny finish)
- ___ 229. 8 5/8" Fenton Thistle Bowl with 3 in 1 Edge – Green (nice item)
- ___ 230. **9" FENTON FEATHER STITCH LOW 8 RUFFLED BOWL – BLUE (RARE ITEM IN A VERY SCARCE SHAPE)**
- ___ 231. **9 1/8" FENTON FEATHER STITCH LOW 8 RUFFLED BOWL – GREEN (ANOTHER NICE EXAMPLE IN A RARE COLOR)**

- ____ 232. (1) 8" Fenton Coin Dot 6 Ruffled Bowl and (1) 8 ¼" Fenton Coin Dot Bowl with Tight C.R.E. – Green (selling 2 for 1)
- ____ 233. 8" Fenton Captive Rose Bowl with 3 in 1 Edge – Green (nice color)
- ____ 234. 7 ¾" Fenton Captive Rose Bowl with tight C.R.E. – Amyth. (scarce)
- ____ 235. **FENTON paneled DANDELION 5 PC. TANKARD WATER SET – MARI. (NICE SET; WELL MATCHED – NICE COLOR)**
- ____ 236. 9" Fenton Peacock and Grape 8 Ruffled Bowl – Amyth. (nice irid.)
- ____ 237. 7 ½" Fenton Peacock and Grape spatula ftd. I.C. Shaped Bowl – Green (nice color)
- ____ 238. 8" Fenton Peacock and Grape spatula ftd. 8 Ruffled Bowl – Blue (nice color)
- ____ 239. 8 ¾" Fenton Peacock and Grape 8 Ruffled Bowl – Mari.
- ____ 240. **9 ¾" FENTON HOLLY FLARED PLATE – BLUE (SCARCE; NICE COLOR AND IRID.)**
- ____ 241. 9 5/8" Fenton Holly Flat Plate – Dk. Mari. (great color with super irid.)
- ____ 242. 9" Fenton Holly Bowl with 3 in 1 Edge – odd Blue (odd tint; nice)
- ____ 243. 9 ¼" Fenton Holly 8 Ruffled Bowl – Blue (nice color)
- ____ 244. (2) 9" Fenton Holly 8 Ruffled Bowls – Mari. (selling 2 x the money)
- ____ 245. **FENTON MIKADO LG. 8 RUFFLED STEMMED COMPOTE – DK. MARI. (VERY SCARCE; NICE COLOR AND IRID.)**
- ____ 246. 8 ¾" Fenton Dragon and Lotus 8 Ruffled Bowl – Blue (nice color)
- ____ 247. 9 1/8" Fenton Dragon and Lotus Bowl with 3 in 1 Edge – Mari.
- ____ 248. (1) Fenton Birds and Cherries 4 sided 2 Handled Bon Bon and (1) Fenton Lotus and Grape 2 sided 2 Handled Card Tray – Mari. (selling 2 x the money)
- ____ 249. (1) 7 ¼" Fenton Leaf Chain 6 Ruffled Bowl, (1) 6" Fenton Persian Medallion 6 Ruffled Sauce and (1) Blackberry Spray J.I.P. Crimped Edge Hat – Mari. (selling 3 for 1)
- ____ 250. **FENTON THISTLE LG. 4 FTD. OBLONG BANANA BOAT – BLUE (SCARCE; NICE COLOR)**
- ____ 251. Fenton Thistle Lg. 4 ftd. Oblong Banana Boat – Mari. (scarce)
- ____ 252. 8 ¾" Fenton Peacock Tail Bowl with 3 in 1 Edge – Mari.
- ____ 253. (1) 6 7/8" Fenton Peacock Tail 6 Ruffled Bowl and (1) Fenton Peacock Tail Stemmed 6 Ruffled Compote – Blue (selling 2 for 1)
- ____ 254. (2) Fenton Peacock Tail Stemmed 6 Ruffled Compotes – (1) Amyth., (1) Mari. (selling 2 for 1)
- ____ 255. Fenton G & C 3 ftd. Ruffled small size Fruit Bowl with Persian Medallion Int. – Blue (scarce; really nice color)
- ____ 256. (1) Fenton Vintage Grape ftd. Fern Dish, (1) 7 ½" Fenton G & C 8 Ruffled Bowl and (1) 7 7/8" Fenton G & C Spatula ftd. 8 Ruffled Bowl – Mari. (selling 3 for 1)
- ____ 257. (1) 9" Fenton Vintage Grape 6 Ruffled Bowl and (1) 8" Fenton Vintage Grape I.C. Shaped Bowl – Mari. (selling 2 for 1)
- ____ 258. (1) 8 1/8" Fenton Vintage Grape Bowl with 3 in 1 Edge and (1) 7 7/8" Fenton Vintage Grape Bowl with tight C.R.E. – Mari. (selling 2 for 1)
- ____ 259. (1) 7" and (1) 8 5/8" Fenton Vintage Grape 6 Ruffled Bowls – Green (selling 2 for 1)
- ____ 260. 8 ½" Fenton Vintage Grape Bowl with tight C.R.E. – Green (nice color)
- ____ 261. (1) 8" Fenton G & C spatula ftd. 8 Ruffled Bowl – Green and (1) 7 ¾" Fenton G & C spatula ftd. 8 Ruffled Bowl – Blue (selling 2 x the money)
- ____ 262. (1) 5 ¾" Tall Fenton Diamond Point Columns Squatty Vase, (1) Fenton 2 Row 2 sided Basketweave Hat and (1) 8 5/8" Fenton Arches Bowl – Mari. (selling 3 for 1)
- ____ 263. (1) Fenton Persian Medallion 2 sided 2 handled Card Tray and (1) Fenton Cherry Chain Lg. 2 sided 2 Handled Card Tray – Blue (scarce; selling 2 x the money)
- ____ 264. Fenton O.T. Standard Flared Handled Mug – Powder Blue / Mari. (odd base color)
- ____ 265. **FENTON BUTTERFLY AND FERN 7 PC. WATER SET – BLUE (VERY ATTRACTIVE; WELL MATCHED – VERY NICE)**
- ____ 266. 10 1/8" Fenton Cherry Circles Lg. 6 Ruffled Bowl with O.T. Ext. – Mari. (nice item)
- ____ 267. (2) Fenton Rose Wreath Stemmed 6 Ruffled Compotes – Amyth. and (1) Fenton Rose Wreath Compote – Green (selling 3 x the money)
- ____ 268. (1) Fenton Blackberry Bramble Stemmed Compote – Green and (1) Fenton Stippled Rays Stemmed Compote – Amyth. (selling 2 for 1)
- ____ 269. Fenton Ribbed Int. Stemmed Compote / Vase – Green (scarce)
- ____ 270. Fenton Scotch Thistle Stemmed 6 Ruffled Crimped Edge Compote – Green (very scarce; nice)
- ____ 271. Fenton Birds and Cherries Stemmed 6 Ruffled Compote – Blue (scarce)
- ____ 272. Fenton Ribbed ftd. J.I.P. Vase – Lt. Mari. (nice shape)
- ____ 273. Fenton Ribbed ftd. 6 Ruffled Vase – Blue
- ____ 274. Fenton O.T. Handled Shaving Mug – Blue (nice color)
- ____ 275. **PAIR 10 ½" TALL FENTON FLORENTINE LG. CANDLESTICKS – RED (EXTREMELY RARE PAIR; ONE MAY BE TALLER THAN THE OTHER)**
- ____ 276. (1) Fenton Butterflies 2 Handled 4 sided Bon Bon – Amyth. and (1) Fenton Butterflies 2 Handled 4 sided Bon Bon – Blue (selling 2 x the money)
- ____ 277. (1) 7 ¼" Fenton Acorn 8 Ruffled Bowl – Mari. and (1) 7 ½" Fenton Acorn 8 Ruffled Bowl – Blue (selling 2 for 1)
- ____ 278. 7 5/8" Fenton Heart and Vine Bowl with T.C.E. – Amyth. (nice color and irid.)
- ____ 279. Fenton Blackberry Spray low 6 Ruffled Hat – Blue
- ____ 280. Fenton Floral and Grape 6 pc. Water Set – Dk. Mari. (really nice dark color and irid.; nice)
- ____ 281. Fenton Butterfly and Berry Lg. ftd. 8 Ruffled Master Berry Bowl – Amyth. (nice color)

- ____282. Fenton Butterfly and Berry 7 pc. Round ftd. Berry Set – Mari. (well matched)
- ____283. Fenton Butterfly and Berry 5 pc. Round ftd. Berry Set – Mari.
- ____284. Fenton Fern Panels 6 Ruffled Crimped Edge Hat – Blue
- ____285. **10 ¾" FENTON TWO FLOWERS LG. BALL FTD. I.C. SHAPED BOWL – LIME GREEN / MARI. (RARE AND UNUSUAL BASE COLOR; NICE MARI. OVERLAY)**
- ____286. 10 ½" Fenton Two Flowers Lg. ball ftd. I.C. Shaped Bowl – Mari.
- ____287. 9" Fenton Two Flowers ball ftd. I. C. Shaped Bowl – Blue (really nice color and irid.)
- ____288. 9 ¼" Fenton Two Flowers ball ftd. I.C. Shaped Bowl – Mari.
- ____289. 9 ¾" Fenton Two Flowers ball ftd. 8 Ruffled Bowl – Lt. Aqua / Mari. (rare base color with a light Mari. finish)
- ____290. **9 1/8" FENTON CHRYSANTHEMUM LG. BALL FTD. DEEP RUFFLED BOWL – BLUE / ELEC. BLUE (SUPER COLOR WITH GREAT DETAIL AND IRID.)**
- ____291. 10" Fenton Chrysanthemum Lg. ball ftd. I.C. Shaped Bowl – Mari. (nice color)
- ____292. 8 ¾" Fenton Chrysanthemum 8 Ruffled Bowl – Mari. (satiny finish)
- ____293. (1) Fenton Holly 2 sided Hat and (1) Fenton Holly 4 sided Hat – Blue (nice 2 sided; 4 sided is silvery; selling 2 for 1)
- ____294. (1) 6" Fenton Pine Cone 6 Ruffled Bowl – Blue; (1) Fenton Lotus and Poinsettia ftd. 6 Ruffled Sauce and (1) 6 ¼" Fenton Sailboats 6 Ruffled Sauce – Mari. (selling 3 for 1; Pine Cone is silvery)
- ____295. Fenton Peacock Tail 6 Ruffled Hat with 1910 General Furniture Adv. – Green (scarce advertising)
- ____296. (2) N Daisy and Plume Stemmed Ruffled Rose Bowl – Lt. Mari. (selling 2 for 1)
- ____297. N Daisy and Plume Stemmed Ruffled Rose Bowl – Purp. (scarce; nice)
- ____298. N Daisy and Plume 3 ftd. Ruffled Rose Bowl with Stippled Rays Int. – Purp.
- ____299. (1) N Daisy and Plume Stemmed Ruffled Compote with N Fern Int. and (1) N Daisy and Plume Stemmed Ruffled Compote – Green (selling 2 for 1; Fern Compote is attractive)
- ____300. **N ROSE SHOW FLARED PLATE – ICE GREEN (RARE AND DESIRABLE; IRID. IS LIGHT; TOUGH TO FIND)**
- ____301. **N ROSE SHOW FLARED PLATE – BLUE (EXCELLENT EXAMPLE WITH A BRIGHT MULTI-COLORED IRID.)**
- ____302. **N ROSE SHOW FLARED PLATE – PURP. (VERY SCARCE; HAS GOLDISH HIGHLIGHTS)**
- ____303. **N POPPY SHOW FLARED PLATE – PASTEL MARI. (RARE AND DESIRABLE WITH SUPER PASTEL HIGHLIGHTS)**
- ____304. **N POPPY SHOW FLARED PLATE – PURP. (SCARCE; GOLDISH BUT STILL DESIRABLE)**
- ____305. **N WISHBONE 3 FTD. 8 RUFFLED BOWL WITH RUFFLES AND RINGS EXT. – HOREHOUND (VERY RARE BASE COLOR FOR THIS PATTERN; LIGHT IRID.)**
- ____306. N Wishbone 3 ftd. 8 Ruffled Bowl with Ruffles and Rings Ext. – Purp. (very attractive example)
- ____307. N Wishbone 3 ftd. 8 Ruffled Bowl with Ruffles and Rings Ext. – Amyth. (goldish finish)
- ____308. N Wishbone 3 ftd. 8 Ruffled Bowl with Ruffles and Rings Ext. – Mari. (nice example)
- ____309. 10" N Wishbone Lg. 8 Ruffled Bowl with Basketweave Ext. – Green (very desirable with Elec. Blue highlights)
- ____310. **N ACORN BURR 7 PC. WATER SET – GREEN (RARE; DESIRABLE; TOUGH COLOR TO FIND)**
- ____311. **N ACORN BURR 7 PC. WATER SET – PURP. (RARE AND ALWAYS DESIRABLE; NICE MULTI-COLORED IRID.)**
- ____312. N Acorn Burr Tumbler – Purp. (super example)
- ____313. **N ACORN BURR 7 PC. WATER SET – DK. MARI. (REALLY NICE SET; ACTUALLY QUITE RARE; GREAT COLOR)**
- ____314. **N ACORN BURR 6 PC. TABLE SET – DK. MARI. (VERY SCARCE AND VERY DESIRABLE; WELL MATCHED)**
- ____315. **PR. 11" TALL N'WOOD #661 STRETCH CANDLESTICKS – RUSSET GREEN (VERY RARE AND VERY DESIRABLE PAIR; WELL MATCHED)**
- ____316. **N HEARTS AND FLOWERS STEMMED 6 RUFFLED COMPOTE WITH RIBBED EXT. – AQUA OPAL. (SUPER EXAMPLE WITH GREAT OPAL. AND PASTEL IRID.)**
- ____317. **N HEARTS AND FLOWERS STEMMED 6 RUFFLED COMPOTE WITH RIBBED EXT. – BLUE (VERY DESIRABLE; REALLY BRIGHT IRID.)**
- ____318. N Hearts and Flowers Stemmed 6 Ruffled Compote with Ribbed Ext. – Mari. (very nice color and irid.)
- ____319. **9" N HEARTS AND FLOWERS 8 RUFFLED BOWL WITH RIBBED EXT. – ICE BLUE (EXCELLENT EXAMPLE WITH PINK HIGHLIGHTS)**
- ____320. **9" N EMBROIDERED MUMS 8 RUFFLED BOWL WITH RIBBED EXT. – ELEC. BLUE (ONE OF THE BEST I'VE SEEN AND I'VE SEEN A BUNCH)**
- ____321. **N BUTTERFLY 2 HANDLED 4 SIDED BON BON WITH THREADED EXT. – BLUE (RARE AND DESIRABLE ITEM WITH THIS EXTERIOR)**
- ____322. N Butterfly 2 Handled 4 sided Bon Bon with Threaded Ext. – Purp. (tough color to find with a threaded ext.)
- ____323. N Butterfly 2 Handled 4 sided Bon Bon with Threaded Ext. – Mari. (very scarce and very desirable)
- ____324. N Butterfly 2 Handled 4 sided Bon Bon with Plain Ext. – Green (great color and irid.)
- ____325. (2) N Butterfly 2 Handled 4 sided Bon Bon with Plain Ext. – Purp. (selling 2 times the money)
- ____326. **N NIPPON BOWL WITH P.C.E. AND BASKETWEAVE EXT. – DK. ICE BLUE (RARE AND DESIRABLE; REALLY DARK BASE COLOR)**

- ____ 327. N Nippon 8 Ruffled Bowl with Basketweave Ext. – Green (very scarce; really nice color and irid.)
- ____ 328. **N NIPPON 8 RUFFLED BOWL WITH BASKETWEAVE EXT. – DK. MARI. (SUPER EXAMPLE)**
- ____ 329. N Nippon Bowl with P.C.E. and Ribbed Ext. – Ice Blue (scarce; nice irid.)
- ____ 330. **N SINGING BIRDS 7 PC. WATER SET – GREEN (RARE AND VERY DESIRABLE; GREAT COLOR AND IRID.)**
- ____ 331. (4) N Singing Birds Handled Mugs – Blue / Elec. Blue (selling 4 times the money)
- ____ 332. N Singing Birds Handled Mug – Lt. Amyth. (desirable base color)
- ____ 333. (1) N Stippled Singing Birds Handled Mug – Dk. Mari. (1) N Singing Birds Handled Mug – Mari. (selling 2 for 1; Stippled example is nice)
- ____ 334. 9" N Grape Leaves 8 Ruffled Bowl – Purp. (nice blue highlights)
- ____ 335. **N BLOSSOMTIME STEMMED 6 RUFFLED COMPOTE – AMYTH. (VERY SCARCE AND DESIRABLE; NICE)**
- ____ 336. N Blossomtime Stemmed 6 Ruffled Compote – Green (very scarce and very desirable; satiny finish)
- ____ 337. N Blossomtime Stemmed 6 Ruffled Compote – Mari. (scarce and desirable)
- ____ 338. N Plain Interior Stemmed 6 Ruffled Compote with Wildflower Ext. – Green (scarce variation)
- ____ 339. N Plain Interior Stemmed 6 Ruffled Compote with Wildflower Ext. – Mari. (another simple but scarce variation)
- ____ 340. **14 1/2" TALL X 4 3/4" BASE N TREE TRUNK MID-SIZE SWUNG VASE – MARI. (SCARCE AND DESIRABLE; BRIGHT FINISH; NICE)**
- ____ 341. **13 1/2" TALL X 4 3/4" BASE N TREE TRUNK MID-SIZE SWUNG VASE – MARI. (ANOTHER NICE EXAMPLE; REALLY ATTRACTIVE)**
- ____ 342. 10 3/4" Tall N Tree Trunk Standard Swung Vase – Blue (scarce; dark color and irid.)
- ____ 343. 10 3/4" Tall N Tree Trunk Standard Swung Vase – Purp. (dark and nice)
- ____ 344. (2) 10 3/4" Tall N Tree Trunk Standard Swung Vase – Green (selling 2 times the money)
- ____ 345. (1) 9 1/4" Tall N Tree Trunk Swung Vase – Amyth. and (1) 10 1/2" Tall N Tree Trunk Standard Swung Vase – Green (selling 2 x the money)
- ____ 346. (1) 7" Tall and (1) 9" N Tree Trunk Standard Swung Vases – Mari. (selling so much each for the pair)
- ____ 347. 12" Tall N Tree Trunk Standard Swung Vase – Clear Opal. (not carnival; really large example; nice opal.)
- ____ 348. 7 1/4" Tall N Fine Rib Squatty Swung Vase – Purp. (nice satiny finish)
- ____ 349. 10 1/4" Tall N Fine Rib Swung Vase – Green
- ____ 350. **12 5/8" TALL X 4 3/4" BASE N THIN RIB MID-SIZE SWUNG VASE – GREEN (VERY SCARCE; VERY NICE EXAMPLE)**
- ____ 351. **12 1/8" TALL X 4 3/4" BASE N THIN RIB MID-SIZE SWUNG VASE – GREEN (NICE EXAMPLE & IRID.)**
- ____ 352. 6 5/8" Tall N Thin Rib Standard Squatty Swung Vase – Purp. (satiny finish)
- ____ 353. 10" Tall N Thin Rib Standard Swung Vase – Purp. (dark example)
- ____ 354. (1) 8 5/8" N Plain Interior "Rainbow" Bowl with P.C.E. and Basketweave Ext. and (2) N "Rainbow" Stemmed 6 Ruffled Compotes – (1) with Basketweave Ext. – Purp. (selling 3 for 1; nice satiny finish)
- ____ 355. **N CORN VASE WITH PLAIN BASE – AMYTH. (RARE AND VERY DESIRABLE; A LIGHTER BASE COLOR)**
- ____ 356. 9" N Rosette 8 Ruffled Bowl with Ruffles and Rings Ext. – Amyth. (really nice example; very showy)
- ____ 357. N Drapery Tri-Cornered Candy Dish – Ice Blue (scarce; perfect feet)
- ____ 358. N Drapery Tri-Cornered Candy Dish – Purp. (scarce; nice color)
- ____ 359. **N DRAPERY 6 RUFFLED ROSE BOWL – AQUA OPAL. (VERY DESIRABLE WITH NICE PASTEL OPAL.)**
- ____ 360. **N IVY TOWN PUMP NOVELTY VASE – PURP. (RARE AND VERY DESIRABLE; EXCELLENT COLOR AND MULTI-COLORED IRID.)**
- ____ 361. **8 3/4" N LATTICE AND POINSETTIA 8 RUFFLED 3 FTD. BOWL WITH RIBBED EXT. – BLUE (RARE & DESIRABLE PATTERN; NICE COLOR & IRID.)**
- ____ 362. 8 1/2" N Lattice and Poinsettia 8 Ruffled 3 ftd. Bowl with Ribbed Ext. – Clear Opal. (not carnival; nice opal.)
- ____ 363. **N PEACOCK AT THE FOUNTAIN COVERED BUTTER DISH – PURP. (DESIRABLE ITEM WITH VERY NICE COLOR AND IRID.)**
- ____ 364. 10" N Peacock at the Urn Lg. I.C. Bowl – Purp. (very scarce and desirable; nice average color and irid.)
- ____ 365. **8 7/8" N PEACOCKS 8 RUFFLED BOWL WITH RIBBED EXT. – AQUA / MARI. (RARE BASE COLOR WITH A MARIGOLD OVERLAY; NICE)**
- ____ 366. 8 7/8" N Peacocks 8 Ruffled Bowl with Ribbed Ext. – Amyth. (scarce; nice color and irid.)
- ____ 367. 8 1/2" N Peacocks Bowl with P.C.E. and Ribbed Ext. – Mari. (nice color and irid.)
- ____ 368. **9" N PEACOCKS FLARED PLATE WITH RIBBED EXT. – MARI. (EXCELLENT IRID.; DESIRABLE)**
- ____ 369. 9 1/4" N Peacocks Flat Plate with Ribbed Ext. – Ice Green (very scarce; has nice irid.)
- ____ 370. **6 3/8" N "FERN BRAND CHOCOLATES" ADVERTISING PLATE WITH BASKETWEAVE EXT. – AMYTH. (VERY DESIRABLE ADVERTISING ITEM; NICE)**
- ____ 371. N Fine Cut and Roses ftd. Ruffled Rose Bowl with Fancy Int. – Dk. Ice Blue (scarce; nice dark color)
- ____ 372. N Fine Cut and Roses ftd. Ruffled Rose Bowl with Fancy Int. – Ice Blue (scarce; nice color)
- ____ 373. N Fine Cut and Roses ftd. Ruffled Rose Bowl with Fancy Int. – White (very scarce; nice color)
- ____ 374. N Fine Cut and Roses ftd. Ruffled Rose Bowl – Custard / Nutmeg (scarce)

- ___ 375. **N FINE CUT AND ROSES FTD. RUFFLED ROSE BOWL – HOREHOUND (VERY RARE BASE COLOR; TOUGH TO FIND; REALLY NICE)**
- ___ 376. (2) N Fine Cut and Roses ftd. Ruffled Rose Bowls – Green (selling 2 x the money; nice irid.)
- ___ 377. N Fine Cut and Roses ftd. Ruffled Rose Bowl – Green
- ___ 378. (2) N Fine Cut and Roses ftd. Ruffled Rose Bowls – Amyth. (selling 2 x the money)
- ___ 379. (2) N Fine Cut and Roses ftd. Ruffled Rose Bowls – (1) Mari, (1) Dk. Mari. (selling 2 x the money)
- ___ 380. **N DANDELION 7 PC. TANKARD WATER SET – PURP. (RARE AND DESIRABLE; MOST ITEMS HAVE RIBBED INT.)**
- ___ 381. **N DANDELION 5 PC. TANKARD WATER SET – DK. MARI. (VERY DESIRABLE; GREAT COLOR & IRID.)**
- ___ 382. 11 3/8" N Stippled Rays Lg. 8 Ruffled Bowl with Plain Ext. – Green (really large example)
- ___ 383. 8 1/4" N Sunflower spatula ftd. 8 Ruffled Bowl – Amyth. (deep item)
- ___ 384. 8 7/8" N Sunflower spatula ftd. 8 Ruffled Bowl with Meander Ext. – Mari. (satiny finish)
- ___ 385. 8 3/4" N Strawberry Stippled 8 Ruffled Bowl with Ribbed Ext. – Purp. (nice color and irid.; has chip on one point)
- ___ 386. 8 3/4" N Strawberry 8 Ruffled Bowl with Basketweave Ext. – Amyth. (nice color; flake on inside edge)
- ___ 387. 8 3/4" N Strawberry 8 Ruffled Bowl with Basketweave Ext. – Purp. (nice irid.)
- ___ 388. 8 3/4" N Strawberry 8 Ruffled Bowl with Basketweave Ext. – Purp. (nice color with yellow highlights)
- ___ 389. 8 3/4" N Strawberry 8 Ruffled Bowl with Basketweave Ext. – Green (bright satiny finish)
- ___ 390. 8 1/2" N Strawberry Bowl with P.C.E. and Basketweave Ext. – Mari. (nice satiny finish)
- ___ 391. 8 1/2" N Strawberry Bowl with P.C.E. and Basketweave Ext. – Purp. (silvery finish)
- ___ 392. 9 3/4" N Wild Strawberry Lg. 8 Ruffled Bowl with Basketweave Ext. – Green (scarce; has a Mari. overlay)
- ___ 393. 8 1/4" N Star of David and Bows domed 8 Ruffled Bowl – Amyth. (really nice example)
- ___ 394. N Eight Sided Handled Bushel Basket – Dk. Mari. (scarce; nice color)
- ___ 395. **N ROUND HANDLED BUSHEL BASKET – SMOKE (VERY RARE BASE COLOR; EXCELLENT IRID.)**
- ___ 396. **N ROUND HANDLED BUSHEL BASKET – HOREHOUND (ODD BASE COLOR; LOOKS AMBER; NICE)**
- ___ 397. N Round Handled Bushel Basket – Purp. (nice color)
- ___ 398. (2) N Round Handled Bushel Baskets – Purp. (one is goldish; one is silvery; selling 2 x the money)
- ___ 399. N Round Handled Bushel Basket – Blue (nice color)
- ___ 400. **N GOOD LUCK STIPPLED 8 RUFFLED BOWL WITH UNIRIDIZED NARROW BASE – BLUE (RARE AND VERY DESIRABLE WITH A BRILLIANT YELLOW IRID.)**
- ___ 401. **N GOOD LUCK STIPPLED 8 RUFFLED BOWL WITH UNIRIDIZED NARROW BASE – BLUE (VERY DESIRABLE; NICE COLOR AND IRID.)**
- ___ 402. N Good Luck Stippled low 8 Ruffled Bowl with iridized Narrow Base – Blue (excellent example; nice irid.)
- ___ 403. N Good Luck Stippled 8 Ruffled Bowl with uniridized Narrow Base – Mari. (scarce; nice irid.)
- ___ 404. **N GOOD LUCK BOWL WITH P.C.E. AND RIBBED EXT. – ELEC. BLUE (EXCELLENT EXAMPLE WITH SUPER IRID.)**
- ___ 405. N Good Luck 8 Ruffled Bowl with Ribbed Ext. – Blue / Elec. Blue (very scarce with nice color and irid.)
- ___ 406. **N GOOD LUCK 8 RUFFLED BOWL WITH RIBBED EXT. – ELEC. BLUE (VERY DESIRABLE WITH EXCELLENT HIGHLIGHTS)**
- ___ 407. N Good Luck 8 Ruffled Bowl with Ribbed Ext. – Blue / Elec. Blue (very desirable with nice blue highlights)
- ___ 408. N Good Luck 8 Ruffled Bowl with Ribbed Ext. – Dk. Purp. (scarce; nice dark color)
- ___ 409. N Good Luck 8 Ruffled Bowl with Ribbed Ext. – Dk. Mari. (nice color and irid.)
- ___ 410. **9 1/8" N GOOD LUCK FLAT PLATE WITH RIBBED EXT. – DK. MARI. (RARE AND DESIRABLE)**
- ___ 411. **N GOOD LUCK BOWL WITH P.C.E. AND RIBBED EXT. – PASTEL MARI. (SUPER PASTEL FINISH)**
- ___ 412. N Good Luck Bowl with P.C.E. and Basketweave Ext. – Green (strong satiny finish)
- ___ 413. N Good Luck 8 Ruffled Bowl with Basketweave Ext. – Purp. (scarce; nice)
- ___ 414. N Good Luck 8 Ruffled Bowl with Basketweave Ext. – Purp. (scarce with goldish highlights)
- ___ 415. **N GOOD LUCK 8 RUFFLED BOWL WITH BASKETWEAVE EXT. – HOREHOUND (RARE AND DESIRABLE BASE COLOR; NICE IRID.)**
- ___ 416. N Good Luck 8 Ruffled Bowl with Basketweave Ext. – Mari. (nice satiny finish)
- ___ 417. 10 1/4" N Feather Stitch Swung Vase – Purp. (scarce)
- ___ 418. 10 3/8" N Feather Stitch Swung Vase – Green
- ___ 419. 7" N Feather Stitch Squatty Swung Vase – Mari.
- ___ 420. **N G & C COVERED SWEETMEAT COMPOTE – DK. MARI. (ABSOLUTELY SUPER DARK EXAMPLE; EXCELLENT ITEM; ONE OF THE BEST)**
- ___ 421. N G & C Covered Sweetmeat Compote – Purp. (nice color; scarce)
- ___ 422. N G & C Covered Sweetmeat Compote – Amyth. (nice color; scarce)
- ___ 423. N G & C Whimsey Sweetmeat Compote – Amyth. (scarce; nice color)
- ___ 424. **N G & C LG. COVERED COMPOTE – PURP. (VERY SCARCE; NICE COLOR AND IRID.)**
- ___ 425. **N G & C FTD. HATPIN HOLDER – EMERALD GREEN (RARE AND VERY DESIRABLE; HAS BRIGHT GREEN HIGHLIGHTS)**
- ___ 426. N G & C ftd. Hatpin Holder – Purp. (nice color and irid.)
- ___ 427. N G & C ftd. Hatpin Holder – Purp. (nice color and irid.)

- ___ 428. N G & C ftd. Hatpin Holder – Dk. Mari. (really nice color and irid.)
- ___ 429. N G & C Handled Punch Cup – Green
- ___ **430. (2) N G & C COVERED POWDER JARS – GREEN (SELLING 2 X THE MONEY)**
- ___ 431. (3) N G & C Covered Powder Jars – Purp. (selling 3 x the money)
- ___ 432. N G & C Covered Powder Jar – Mari. (nice color; scarce)
- ___ 433. (2) N G & C domed Sherbets – Purp. (selling 2 x the money)
- ___ 434. N G & C Ruffled Hat Shape – Mari.
- ___ **435. N G & C 7 PC. WATER SET – GREEN (VERY SCARCE COLOR FOR THIS ITEM; NICE SET)**
- ___ 436. N G & C 7 pc. Water Set – Dk. Mari. (really nice dark color and irid.; nice set)
- ___ 437. N G & C 7 pc. Water Set – Purp. (nice color; scarce)
- ___ 438. N G & C 7 pc. Water Set – Amyth. (pitcher is cracked)
- ___ 439. 6 3/8" N G & C Handgrip Plate with Basketweave Ext. – Amyth. (scarce and desirable item)
- ___ 440. 9 7/8" N G & C Stippled 8 Ruffled Bowl with Basketweave Ext. – Amyth. (red & blue highlights)
- ___ 441. (3) N G & C Variant 8 Ruffled Bowls; one with Basketweave Ext. – Amyth. (selling 3 x the money)
- ___ 442. 9" N G & C Flared Plate with Plain Ext. – Purp. (nice Blue highlights)
- ___ 443. N G & C 8 Ruffled Bowl with Basketweave Ext. – Purp. (nice color and irid.)
- ___ 444. N G & C spatula ftd. Plate with Meander Ext. – Mari. (nice irid.)
- ___ **445. N G & C 2 HANDLED 4 SIDED BON BON WITH BASKETWEAVE EXT. – BLUE / ELEC. BLUE (SUPER IRID.; VERY DESIRABLE)**
- ___ **446. N ROSE WREATH STIPPLED 2 HANDLED BON BON WITH BASKETWEAVE EXT. – PURP. (RARE AND VERY DESIRABLE; NICE HIGHLIGHTS)**
- ___ 447. 10 1/8" Tall N 4 Pillars Standard Swung Vase – Mari. (nice color and irid.)
- ___ 448. 11 1/2" Tall N 4 Pillars Standard Swung Vase – Russet Green
- ___ 449. N Daisy and Plume 3 ftd. Ruffled Rose Bowl with Stippled Rays Int. – Mari. (satiny finish)
- ___ **450. N ORIENTAL POPPY 7 PC. TANKARD WATER SET – PURP. (RARE AND VERY DESIRABLE SET; NICE COLOR AND IRID.)**
- ___ 451. N Beaded Cable ftd. 6 Ruffled Candy Dish – Purp. (nice dark color)
- ___ 452. N Beaded Cable ftd. Squatty Ruffled Rose Bowl with Rays Int. – Amyth. (odd shape)
- ___ 453. N Beaded Cable ftd. Ruffled Rose Bowl with Rays Int. – Amyth.
- ___ 454. N Beaded Cable ftd. Ruffled Rose Bowl with Rays Int. – Green
- ___ **455. N BEADED CABLE FTD. RUFFLED ROSE BOWL – AQUA OPAL. (RARE & DESIRABLE; NICE OPAL.)**
- ___ **456. N BEADED CABLE FTD. RUFFLED ROSE BOWL – WHITE (VERY SCARCE COLOR; NICE & FROSTY)**
- ___ 457. N Beaded Cable ftd. Ruffled Rose Bowl – Green / Mari. (very scarce color; has a Mari. overlay)
- ___ 458. (2) N Beaded Cable ftd. Ruffled Rose Bowls – Purp. (selling 2 x the money)
- ___ 459. N Beaded Cable ftd. Ruffled Rose Bowl – Dk. Mari. (nice color and irid.)
- ___ **460. 7 5/8" N FRUIT AND FLOWERS PLATE WITH BASKETWEAVE EXT. – AMYTH. (VERY SCARCE WITH NICE IRID.)**
- ___ 461. 7 1/2" N Fruit and Flowers 6 Ruffled Bowl with Basketweave Ext. – Blue (scarce with Blue highlights)
- ___ 462. 8 3/4" N Three Fruits Medallion spatula ftd. 8 Ruffled Bowl with Meander Ext. – Purp. (super color and irid.)
- ___ 463. 9" N Three Fruits Medallion spatula ftd. 8 Ruffled Bowl with Meander Ext. – Amyth. (really nice example)
- ___ 464. (6) 6" N Fruit and Flowers ind. 6 Ruffled Berry Bowls with Plain Ext. – Purp. (selling so much each for the set)
- ___ 465. N Fruit and Flowers 7 pc. 6 Ruffled Berry Set with Basketweave Ext. – Mari. (selling set for one money; well matched)
- ___ 466. N Fruit and Flowers Stemmed 2 Handled Bon Bon with Basketweave Ext. – Amyth. (nice color and irid.)
- ___ 467. N Fruit and Flowers Stemmed 2 Handled Bon Bon with Basketweave Ext. – Mari. (nice pink highlights)
- ___ 468. 8 1/2" N Three Fruits Bowl with P.C.E. and Basketweave Ext. – Green (nice color)
- ___ 469. 8 1/4" N Three Fruits Bowl with P.C.E. and Plain Ext. – Mari. (satiny finish)
- ___ 470. 9" N Three Fruits Plate with Basketweave Ext. – Green (very scarce; nice)
- ___ 471. (1) 10 1/2" and (1) 10 3/4" Tall Diamond Point Swung Vases – Purp. (selling 2 x the money)
- ___ 472. 11 1/2" N Diamond Point Swung Vase – Amyth. (nice color)
- ___ 473. 10 1/2" N Diamond Point Swung Vase – Purp. (nice color)
- ___ 474. 11" N Diamond Point Swung Vase – Green (nice color)
- ___ 475. N Leaf and Beads ftd. Rose Bowl with Floral Int. – Green (scarce; nice)
- ___ 476. N Leaf and Beads ftd. Rose Bowl – Green / Mari.
- ___ 477. N Leaf and Beads ftd. Tri-Cornered Candy Dish – Green / Mari. (odd shape)
- ___ 478. (1) N Paneled Holly Handled Candy Dish and (1) N Rays 2 Handled Bon Bon – Green (selling 2 for 1)
- ___ 479. (1) N Lustre Flute 6 Ruffled Hat – Amyth. and (1) N Lustre Flute one handled Nappy – Green (selling 2 for 1)
- ___ 480. N Plain Interior 8 Ruffled Bowl with Pansy and Plume Ext. – Purp. (ext. pattern for grape leaves)
- ___ 481. N Grapes Leaves 8 Ruffled Bowl with Pansy and Plume Ext. – Mari.

DONALD DORAIS
150 HIGHLAND AVENUE
CUMBERLAND, RI 02864

BURNS AUCTION SERVICE



Visit www.necga.com for picture and brochure, Click on carnival glass links page, Look for Burns Auction. AUCTION FLEX AVAILABLE FOR THIS AUCTION. CHECK US OUT ON AUCTION ZIP #29661.



LOT# 420

LEE MARKLEY
BOX 306
MENTONE, IN 46539

CARNIVAL GLASS AUCTION APRIL 17 & 18, 2015



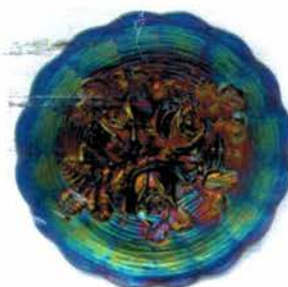
LOT# 320



LOT# 200



LOT# 285



LOT# 301



LOT# 125



LOT# 110



LOT# 112



LOT# 126



LOT# 275



LOT# 130



LOT# 133



LOT# 315