



LOT# 280

# BURNS

AUCTION SERVICE

## CARNIVAL GLASS AUCTION

FRIDAY & SATURDAY,  
MARCH 20 & 21, 2015



LOT# 225

PREVIEW: FRIDAY AT 3:00 P.M.  
AUCTION: 6:00 P.M. (LOTS #1-#190)  
  
PREVIEW: SATURDAY AT 8:00 A.M.  
AUCTION: 9:30 A.M. (LOTS #191 TO END)

at the RAMADA PLAZA HOTEL

1718 UNDERPASS WAY

HAGERSTOWN, MD 21740

(301) 797-2500

Hotel is located at Exit 5A off I-81



LOT# 335



LOT# 50



LOT# 100

Surprise! Surprise! Surprise! Look who's having an auction in Hagerstown, MD. The facilities are great and the people are wonderful, so we decided to start our 2015 season at the Ramada Hotel, right off of I-81 in good Ole Maryland.

We have a selection from 3 collections with glass from Pennsylvania, Alabama, and California making for a great assortment of over 400 lots. We have decided to make the auction into 2 sessions selling Friday evening, as well as Saturday morning. We have some great things and we hope to see you there!

The Ramada Hotel, located on 1718 Underpass Way (exit 5A on I-81) will host the event. You can call the hotel direct at 301-797-2500 for reservations. **Be sure to mention Burns Auction Service to receive the special \$75 room rate.**

The auction will be on Auction Flex, as well as Auction Zip ID#29661. All auction flex bids are due by Noon on Friday, March 20th. All absentee bidders note, if you are successful, I will mail the item and then call you with your total cost owed. All mailings will carry a minimum \$5 handling charge towards packing supplies, etc. All dealers, please bring valid tax information.

All photos and listings can be viewed at [www.necga.com](http://www.necga.com). Click on Carnival glass links page and look for Burns Auction.

For further information, contact Tom Burns, 183 Sunnyside Drive, Clermont, FL 34711. Tel. (407) 592-6552. Thanks.

- \_\_\_ 1. IG 1967 ACGA Washington, D.C. Robin Mug – Red (rare souvenir)
- \_\_\_ 2. Mosser Beaded Basket Handled Basket – White (new repro)
- \_\_\_ 3. 1981 Levay / Fenton Inverted Strawberry Handled Basket – Aqua Opal. (scarce)
- \_\_\_ 4. **1969 PRESNICK'S CARNIVAL GLASS MUSEUM – LODI, OHIO G & C COVERED HUMIDOR – PURP. (RARE ITEM TO FIND)**
- \_\_\_ 5. **FENTON POPPY SHOW 6 RUFFLED VASE – CO-BALT BLUE (BEAUTIFUL IRID.)**
- \_\_\_ 6. Fenton Poppy Show 6 Ruffled Vase – Light Pink Opal. (nice item)
- \_\_\_ 7. Fenton Poppy Show 6 Ruffled Vase – Honey Amber / Topaz (nice color)
- \_\_\_ 8. I.G. Poppy Show 6 Ruffled Vase – White (satiny finish)
- \_\_\_ 9. Fenton Figural Alley Cat – Dark Sapphire Blue (scarce item with a bright base color)
- \_\_\_ 10. 12" Tall Westmoreland Paneled Grape Lg. Handled Flower Basket – Red (very attractive)
- \_\_\_ 11. 8 ¼" Tall Westmoreland Paneled Grape Pedestaled 2 sided Banana Dish – Sapphire Blue (very attractive)
- \_\_\_ 12. Westmoreland Figural Camel Covered Candy Dish – Irid. Vaseline (bright base color)
- \_\_\_ 13. 9 ½" Singleton Bailey Farnyard I.C. Shaped Bowl – Light Lavender Opal. (scarce item)
- \_\_\_ 14. 1911 U.S. Glass Rochester, N.Y. Shriners Stemmed Champagne Glass – Clear / Decor. (nice)
- \_\_\_ 15. **PHOENIX MOON AND STARS LG. DEEP ROUND STEMMED COMPOTE – MARI. / MILK GLASS (VERY SCARCE; TOUGH ITEM TO FIND)**
- \_\_\_ 16. Phoenix Loganberry Handled Creamer – Mari. / Milk Glass (very scarce item to find; nice irid.)
- \_\_\_ 17. Rooster Hatpin – Cobalt Blue (scarce)
- \_\_\_ 18. Rooster Hatpin – White (scarce)
- \_\_\_ 19. Wrapped Beads Hatpin – Dark
- \_\_\_ 20. **U.S. GLASS PEACOCKS LAMP – RED (RARE; DESIRABLE WITH A BRIGHT IRID.; TOUGH)**
- \_\_\_ 21. U.S. Glass Princess Lamp – Purp. (very desirable; tough item to find)
- \_\_\_ 22. U.S. Glass Palm Beach Tumbler – Mari. (scarce pattern)
- \_\_\_ 23. U.S. Glass Palm Beach ind. Round Berry Bowl with Gooseberry Int. – White (scarce)
- \_\_\_ 24. Westmoreland Carolina Dogwood 6 Ruffled Bowl – Dk. Mari. / Milk Glass (super example; nice dark overlay)
- \_\_\_ 25. **8" TALL EDA GLASS CO. KULOR CYLINDER VASE – BLUE (RARE AND VERY DESIRABLE; REALLY TOUGH TO FIND A BLUE EXAMPLE)**
- \_\_\_ 26. **8" TALL RINDSKOPF CLASSIC ARTS LG. ROUND PANELED VASE – MARI. / GREEN STAIN (VERY SCARCE AND VERY DESIRABLE; NICE LARGE SIZE WITH NICE STAIN)**
- \_\_\_ 27. 6" Tall Rindskopf Classic Arts midsize Round Paneled Vase – Mari. / Green Stain (another very scarce item with excellent decor.)
- \_\_\_ 28. Golden Wedding "Full Pint" Bottle with Tin Cap and extra Brass Shot Glass – Mari.
- \_\_\_ 29. 9 ¼" European Pods and Posies Flared Plate – Emerald Green (very scarce; really bright base color)
- \_\_\_ 30. **N PEACOCKS STIPPLED BOWL WITH P.C.E. AND UNIRIDIZED NARROW BASE – BLUE (VERY SCARCE; DIFFERENT BASE COLOR – NICE!)**
- \_\_\_ 31. **N PEACOCKS PLATE WITH RIBBED EXT. – GREEN (RARE AND DESIRABLE; REALLY NICE SATINY EXAMPLE)**

- \_\_\_ 32. N Peacocks 8 Ruffled Bowl with Ribbed Ext. – Amyth. (very scarce with really nice irid.)
- \_\_\_ 33. **N PEACOCKS STIPPLED PLATE WITH RIBBED EXT. – MARI. (VERY SCARCE; NICE COLOR AND PASTEL LOOKING IRID.)**
- \_\_\_ 34. N Peacocks Bowl with P.C.E. and Ribbed Ext. – Dk. Mari. (very scarce; really nice color)
- \_\_\_ 35. N Peacocks 8 Ruffled Bowl with Ribbed Ext. – Mari. (scarce; nice color and irid.)
- \_\_\_ 36. **N GOOD LUCK STIPPLED BOWL WITH P.C.E. AND NARROW BASE NON-IRIDIZED EXT. – BLUE (NICE COLOR AND SCARCE BASE COLOR)**
- \_\_\_ 37. **N GOOD LUCK 8 RUFFLED BOWL WITH RIBBED EXT. – ELEC. BLUE (VERY DESIRABLE; REALLY NICE COLOR AND IRID.)**
- \_\_\_ 38. N Greek Key 8 Ruffled Bowl with Ribbed Ext. – Mari. (very desirable; nice pink highlights; tough)
- \_\_\_ 39. N Three Fruits Stippled Plate with Ribbed Ext. – Bronzy Amyth. (very scarce; has a bronze irid.; nice)
- \_\_\_ 40. **N HEARTS AND FLOWERS FLARED PLATE WITH RIBBED EXT. – ICE BLUE (RARE AND DESIRABLE; TOUGH ITEM; A BIT CROOKED)**
- \_\_\_ 41. **N PEACOCKS PLATE WITH RIBBED EXT. – DARK ICE GREEN (HAS TO BE ONE OF THE BETTER EXAMPLES I'VE SEEN)**
- \_\_\_ 42. N Peacocks Plate with Ribbed Ext. – White (scarce; has nice frosty finish)
- \_\_\_ 43. N Strawberry 8 Ruffled Bowl with Plain Ext. – Purp. (really nice example; has nice bright irid.)
- \_\_\_ 44. N Wishbone 3 ftd 8 Ruffled Bowl with Ruffles and Rings Ext. – Green (scarce; nice irid.)
- \_\_\_ 45. **N POPPY OBLONG RUFFLED RELISH TRAY WITH RIBBED EXT. – ICE BLUE (VERY SCARCE; NICE COLOR AND IRID.)**
- \_\_\_ 46. **N POPPY OBLONG RUFFLED RELISH TRAY WITH RIBBED EXT. – GREEN (VERY SCARCE COLOR; NICE SATINY FINISH)**
- \_\_\_ 47. N Poppy Oblong Ruffled Relish Tray with Ribbed Ext. – Blue (nice color; scarce)
- \_\_\_ 48. N G & C Variant Stippled Bowl with P.C.E. and Ribbed Ext. – Blue (scarce item; average irid.)
- \_\_\_ 49. N G & C Variant Stippled 8 Ruffled Bowl with Ribbed Ext. – Purp. (scarce; nice color)
- \_\_\_ 50. **N ACORN BURR 8 PC. RUFFLED PUNCH SET – ICE BLUE (RARE AND EXTREMELY DESIRABLE; SUPER EXAMPLE AND WELL MATCHED)**
- \_\_\_ 51. N Acorn Burr Tumbler – Mari. (nice color)
- \_\_\_ 52. N Peacock at the Fountain Tumbler – Blue (nice color)
- \_\_\_ 53. N Peacock at the Fountain Handled Creamer – Purp. (scarce; really nice color)
- \_\_\_ 54. N Peacock at the Fountain Spooner – Purp. (scarce; really nice color)
- \_\_\_ 55. **N PEACOCK AT THE FOUNTAIN 7 PC. BERRY SET – WHITE (ACTUALLY QUITE A RARE SET TO FIND; HAS SOME GOLD TRIM)**
- \_\_\_ 56. **N PEACOCK AT THE FOUNTAIN 3 FTD. RUFFLED FRUIT BOWL – DK. MARI. (REALLY NICE DARK COLOR AND IRID.)**
- \_\_\_ 57. N Peacock at the Fountain Handled Punch Cup – Purp. (nice example)
- \_\_\_ 58. N Raspberry Tumbler – Purp. (nice color)
- \_\_\_ 59. **N ORIENTAL POPPY TUMBLER – ICE BLUE (RARE AND DESIRABLE – TOUGH TO FIND)**
- \_\_\_ 60. **N BEADED CABLE FTD. RUFFLED ROSE BOWL – ICE BLUE (RARE AND DESIRABLE – VERY TOUGH TO FIND)**
- \_\_\_ 61. N Beaded Cable ftd. Ruffled Rose Bowl – Dk. Mari. (nice dark color)
- \_\_\_ 62. N Singing Bird Handled Mug – Elec. Blue (really nice irid.)
- \_\_\_ 63. N Singing Bird Handled Mug – Lt. Amyth. (scarce base color)
- \_\_\_ 64. N Singing Bird Handled Mug – Green (satiny; scarce)
- \_\_\_ 65. **N PEACOCKS BOWL WITH P.C.E. AND BASKETWEAVE EXT. – GREEN (RARE VARIATION; TOUGH WITH THIS EXT.; NICE)**
- \_\_\_ 66. N Peacocks 8 Ruffled Bowl with Ribbed Ext. – Blue / Elec. Blue (very scarce; nice color and irid.)
- \_\_\_ 67. N Good Luck Bowl with P.C.E. and Basketweave Ext. – Green (scarce; nice color and irid.; tough item)
- \_\_\_ 68. N Good Luck Stippled Bowl with P.C.E. and unirlidized Narrow Base and Ext. – Dk. Mari. (scarce variation with nice irid.)
- \_\_\_ 69. N Good Luck 8 Ruffled Bowl with Basketweave Ext. – Green (above average example; nice bright irid.)
- \_\_\_ 70. **N ROSE SHOW 8 RUFFLED BOWL – PURP. (VERY SCARCE & VERY DESIRABLE; NICE IRID.)**
- \_\_\_ 71. **N ROSE SHOW 8 RUFFLED BOWL – DK. MARI. (VERY DESIRABLE; NICE COLOR AND IRID.)**
- \_\_\_ 72. **N ROSE WREATH STIPPLED 2 HANDLED BON BON – DK. MARI. (RARE ITEM; TOUGH TO FIND; EXCELLENT IRID.)**
- \_\_\_ 73. N Wild Rose 3 ftd. Open Edge Flared Bowl – Dk. Mari. (super color and irid.)
- \_\_\_ 74. N Leaf and Beads 3 ftd. Flared Nut Bowl with Floral Int. – Mari. (very scarce; nice)
- \_\_\_ 75. **N G & C 11 PC. RUFFLED MIDSIZE PUNCH SET – MARI. (VERY SCARCE; REALLY NICE COLOR AND IRID. – WELL MATCHED SET)**
- \_\_\_ 76. N G & C 3 ftd. Turned in Centerpiece Bowl – Dk. Mari. (scarce item with dark color and irid.)
- \_\_\_ 77. N G & C 3 ftd. Fruit Bowl with Straight up Points – Dk. Mari. (scarce; great dark color and irid.)
- \_\_\_ 78. N G & C 3 ftd. Ruffled Small size Fruit Bowl – Dk. Mari. (really nice color and irid.)
- \_\_\_ 79. N G & C 3 ftd. Ruffled Small size Fruit Bowl – Blue (scarce color; nice)
- \_\_\_ 80. **N G & C 3 FTD. RUFFLED SMALL SIZE FRUIT BOWL – WHITE (RARE AND DESIRABLE PASTEL ITEM OF SIZE WITH GREAT IRID.)**

- \_\_\_ 81. N G & C 2 Handled Bon Bon with Basketweave Ext. – Elec. Blue (great color and irid.)
- \_\_\_ 82. N G & C 2 Handled Bon Bon with Basketweave Ext. – Green (nice color and irid.)
- \_\_\_ 83. N G & C 2 Handled Stippled Bon Bon with Basketweave Ext. – Pastel Mari. (nice pastel irid.)
- \_\_\_ 84. N G & C 2 Handled Bon Bon with Basketweave Ext. – Dk. Mari. (nice color and irid.)
- \_\_\_ 85. **(8) N G & C HANDLED PUNCH CUPS – ICE BLUE (SELLING SO MUCH EACH FOR THE SET OF 8; VERY TOUGH TO FIND)**
- \_\_\_ 86. N G & C ftd. Hatpin Holder – Purp. (very scarce; nice color and irid.)
- \_\_\_ 87. N G & C Covered Humidor – Mari. (stippled body with unstippled lid; nice)
- \_\_\_ 88. N G & C with Thumbprint 7 pc. Berry Set – Purp. (scarce set with nice color)
- \_\_\_ 89. N Raspberry ftd. Handled Gravy Boat – Purp. (scarce novelty)
- \_\_\_ 90. **N SPRINGTIME 7 PC. WATER SET – MARI. (VERY SCARCE AND VERY DESIRABLE SET – WELL MATCHED)**
- \_\_\_ 91. **N GOOD LUCK STIPPLED 8 RUFFLED BOWL WITH UNIRIDIZED NARROW BASE AND RIBBED EXT. – BLUE (VERY SCARCE VARIATION; NICE COLOR AND IRID.)**
- \_\_\_ 92. N Good Luck 8 Ruffled Bowl with Ribbed Ext. – Amyth. (nice color and irid.)
- \_\_\_ 93. N Good Luck Bowl with P.C.E. and Basketweave Ext. – Purp. (nice irid.; scarce)
- \_\_\_ 94. N Good Luck Bowl with P.C.E. and Ribbed Ext. – Dk. Mari. (really nice color and irid.)
- \_\_\_ 95. **N HEARTS AND FLOWERS BOWL WITH P.C.E. AND RIBBED EXT. – DK. MARI. (RARE ITEM TO FIND; NICE DARK SATINY FINISH)**
- \_\_\_ 96. N Three Fruits low 8 Ruffled Bowl with Plain Ext. – Green (nice color and irid.)
- \_\_\_ 97. N Greek Key and Scales domed 8 Paneled Bowl – Green (nice example)
- \_\_\_ 98. N Rosette ftd. 8 Ruffled Bowl with Ruffles and Rings Ext. – Green (Alaskan finish)
- \_\_\_ 99. Pair 8" Tall N'wood #657 6 Paneled Stretch Candlesticks – Russet Green (nice pair)
- \_\_\_ 100. **13 3/4" TALL X 5 1/4" BASE N TREE TRUNK SQUATTY ELEPHANT'S FOOT SWUNG VASE – AMYTH. (RARE AND DESIRABLE; HAS A NICE EVEN SATINY FINISH – REALLY TOUGH)**
- \_\_\_ 101. **8 3/4" TALL N DRAPERY 4 PILLAR VARIANT SWUNG VASE – SAPPHIRE (RARE BASE COLOR; SUPER EXAMPLE)**
- \_\_\_ 102. 6 1/2" Tall N Ribbed Jester's Cap J.I.P. Vase – Dk. Mari. (very desirable with excellent irid.)
- \_\_\_ 103. 10 1/2" Tall N 4 Pillar Ribbed Swung Vase – Aqua Opal. (scarce and very desirable – nice example)
- \_\_\_ 104. 13 3/4" Tall x 4 1/4" Base N Flute (or Wide Panel) Mid-size Swung Vase – Green (scarce; marigold spray on int.)
- \_\_\_ 105. **13 5/8" TALL X 4 3/4" BASE N THIN RIB MIDSIZE SWUNG VASE – PURP. (SCARCE; NICE DARK COLOR WITH A MULTI-COLORED IRID.)**
- \_\_\_ 106. 11 7/8" Tall x 4 3/4" Base N Thin Rib Midsize Swung Vase – Dk. Mari. (really nice example – excellent color and irid.)
- \_\_\_ 107. 9" Tall N Thin Rib Standard Swung Vase – Green (nice color and irid.)
- \_\_\_ 108. **N POPPY OBLONG RUFFLED RELISH TRAY WITH RIBBED EXT. – GREEN (VERY SCARCE BASE COLOR; REALLY NICE)**
- \_\_\_ 109. N Poppy Oblong Ruffled Relish Tray with Ribbed Ext. – Pastel Mari. (nice color and irid.)
- \_\_\_ 110. **N POPPY SHOW FLARED PLATE – ELEC. BLUE (SUPER, SUPER EXAMPLE COLOR AND IRID.; EXCELLENT IRID.; HAS SOME CHIPPING AND ROUGHNESS AROUND BASE)**
- \_\_\_ 111. 9" N Strawberry Plate with Basketweave Ext. – Amyth. (nice satiny finish)
- \_\_\_ 112. N Wishbone ftd. Deep Flared Plate with Ruffles and Rings Ext. – Amyth. (deep item; satiny; average irid.)
- \_\_\_ 113. N Acorn Burr ind. Round Berry Bowl – Purp.
- \_\_\_ 114. N Eight Sided Handled Bushel Basket – White (frosty; has a check in the handle)
- \_\_\_ 115. **N PEACOCK AT THE FOUNTAIN STEMMED 6 RUFFLED COMPOTE – ELEC. BLUE (RARE AND EXTREMELY DESIRABLE; REALLY NICE IRID.)**
- \_\_\_ 116. 5 5/8" N Peacock at the Urn ind. Round I. C. Shaped Bowl – Elec. Blue (super elec. blue highlights)
- \_\_\_ 117. 5 5/8" N Peacock at the Urn ind. Round I. C. Shaped Bowl – Purp. (satiny finish)
- \_\_\_ 118. 6" N Peacock at the Urn ind. Round I. C. Shaped Bowl – Dk. Mari. (super color and irid.)
- \_\_\_ 119. **6 3/8" N "EAGLE FURNITURE CO. – 282-284 SOUTH MAIN ST. 2 SIDED CARD TRAY WITH BASKETWEAVE EXT. – AMYTH. (RARE AND VERY DESIRABLE ITEM WITH GREAT COLOR)**
- \_\_\_ 120. **N SINGING BIRDS 7 PC. WATER SET – GREEN (SCARCE SET; WELL MATCHED; NICE FINISH)**
- \_\_\_ 121. N Singing Birds Handled Mug – Green (really nice example; bright irid.)
- \_\_\_ 122. N Singing Birds Handled Mug – Elec. Blue (super irid.; nice)
- \_\_\_ 123. N Singing Birds Handled Mug – Dk. Mari. (nice color)
- \_\_\_ 124. **N THREE FRUITS MEDALLION STIPPLED 3 FTD. BOWL WITH MEANDER EXT. – AQUA OPAL. (SCARCE & VERY DESIRABLE; PASTEL FINISH)**
- \_\_\_ 125. **N PEACOCKS BOWL WITH P.C.E. AND RIBBED EXT. – ICE GREEN (RARE AND DESIRABLE SHAPE AND COLOR; GOLDISH HIGHLIGHTS)**
- \_\_\_ 126. **N PEACOCKS PLATE WITH RIBBED EXT. – ICE GREEN (SCARCE; NICE COLOR)**

- \_\_\_ 127. **N PEACOCKS 8 RUFFLED BOWL WITH RIBBED EXT. – AQUA OPAL. (RARE AND DESIRABLE WITH OPAL. ON THE EDGE)**
- \_\_\_ 128. N Peacocks 8 Ruffled Bowl with non-iridized Ribbed Ext. – Blue (really nice dark blue; nice satiny finish)
- \_\_\_ 129. 8 7/8" N G & C Plate with Basketweave Ext. – Amyth. (satiny finish)
- \_\_\_ 130. **N G & C COVERED COMPOTE – PURP. (VERY SCARCE AND ALWAYS DESIRABLE)**
- \_\_\_ 131. N Round Handled Bushel Basket – Sapphire (cracked but a super example)
- \_\_\_ 132. N Round Handled Bushel Basket – White (nice irid.; scarce in this shape)
- \_\_\_ 133. N Round Handled Bushel Basket – Ice Green (scarce color and irid.; nice)
- \_\_\_ 134. N Round Handled Bushel Basket – Blue (nice color)
- \_\_\_ 135. N Round Handled Bushel Basket – Aqua with Opal. Tips (scarce; nice average color and irid.)
- \_\_\_ 136. N Round Handled Bushel Basket – Dk. Mari. (nice dark example)
- \_\_\_ 137. **N BLOSSOMTIME STEMMED 6 RUFFLED COMPOTE – PURP. (VERY SCARCE AND VERY DESIRABLE ITEM; NICE IRID.)**
- \_\_\_ 138. N Blossomtime Stemmed 6 Ruffled Compote – Green (very scarce; has a satiny finish)
- \_\_\_ 139. N Blossomtime Stemmed 6 Ruffled Compote – Dk. Mari. (really desirable; super dark irid.; nice)
- \_\_\_ 140. **N ROSE SHOW FLARED PLATE – GREEN (TOUGH TO FIND IN THIS COLOR; HAS A COUPLE OF CHIPS ON ROSES)**
- \_\_\_ 141. N Rose Show Flared Plate – Blue (very scarce; nice color; has a chip on a rose)
- \_\_\_ 142. **N ROSE SHOW FLARED PLATE – PURP. (VERY SCARCE & DESIRABLE; NICE COLOR & IRID.)**
- \_\_\_ 143. **N ROSE SHOW FLARED PLATE – DK. MARI. (VERY DESIRABLE; NICE COLOR AND IRID.; TOUGH)**
- \_\_\_ 144. **N ROSE SHOW 8 RUFFLED BOWL – DK. MARI. (ANOTHER REALLY NICE DARK COLOR & IRID.)**
- \_\_\_ 145. **N POPPY SHOW 8 RUFFLED BOWL – PASTEL MARI. (VERY SCARCE; NICE HIGHLIGHTS)**
- \_\_\_ 146. N Poppy Show Flared Plate – White (scarce; desirable with nice average item)
- \_\_\_ 147. N Drapery Tri-Cornered Candy Dish – Ice Blue (scarce; nice color)
- \_\_\_ 148. N Drapery Tri-Cornered Candy Dish – Mari. (nice color)
- \_\_\_ 149. 8 1/4" Tall N Drapery Swung Vase – Dk. Mari. (nice color)
- \_\_\_ 150. **N PEACOCK AT THE URN LG. I.C. SHAPED BOWL – DK. MARI. (SUPER EXAMPLE; A NICE DARK COLORED EXAMPLE)**
- \_\_\_ 151. N Peacock at the Urn Lg. I.C. Shaped Bowl – White (very scarce; frosty with excellent irid.; nice)
- \_\_\_ 152. N Peacock at the Urn Lg. I.C. Shaped Bowl – Purp. (very scarce; nice satiny finish)
- \_\_\_ 153. **N PEACOCKS PLATE WITH RIBBED EXT. – PURP. (A REAL BEAUT! SUPER IRID.; VERY DESIRABLE)**
- \_\_\_ 154. N Peacocks Plate with Ribbed Ext. – Lime Ice Green (scarce base color; has a silvery finish)
- \_\_\_ 155. N Peacocks Stippled Plate with Ribbed Ext. on a Narrow Base – Mari. (very scarce; nice color & irid.)
- \_\_\_ 156. N Greek Key 8 Ruffled Bowl with Ribbed Ext. – Mari. (very scarce; nice color and irid.)
- \_\_\_ 157. 8 1/2" N Wishbone ftd. Plate with Ruffles and Rings Ext. – Amyth. (scarce; nice)
- \_\_\_ 158. 8 1/2" N Wishbone 8 Ruffled ftd. Bowl with Ruffles and Rings Ext. – Amyth. (scarce; nice)
- \_\_\_ 159. N Daisy and Plume Stemmed Ruffled Rose Bowl – Mari.
- \_\_\_ 160. **8 3/4" N NIPPON BOWL WITH P.C.E. AND RIBBED EXT. – ICE BLUE (SCARCE ITEM; LIGHT COLOR WITH A GOLDISH FINISH)**
- \_\_\_ 161. 8 3/4" N Good Luck Bowl with P.C.E. and Ribbed Ext. – Blue (scarce; nice color)
- \_\_\_ 162. 9" N Good Luck 8 Ruffled Bowl with Ribbed Ext. – Blue (scarce; nice color)
- \_\_\_ 163. 9" N Good Luck 8 Ruffled Bowl with Ribbed Ext. – Mari. (nice color and irid.)
- \_\_\_ 164. Pair 6 1/2" Tall N'wood Spiral Twist Stretch Candlesticks – Celeste Blue (very scarce pair; nice color)
- \_\_\_ 165. N Drapery Rose Bowl – Aqua Opal. (scarce item with nice average overlay)
- \_\_\_ 166. N Leaf and Beads ftd. Rose Bowl – Aqua with Light Opal. (odd item; hardly any opal.; nice color)
- \_\_\_ 167. N Three Fruits Medallion ftd. 8 Ruffled Bowl with Meander Ext. – Purp. (really nice color and irid.)
- \_\_\_ 168. **N THREE FRUITS PLATE WITH PLAIN EXT. – DK. MARI. (SUPER DARK EXAMPLE; REALLY NICE)**
- \_\_\_ 169. N Three Fruits Bowl with P.C.E. and Basketweave Ext. – Amyth. (scarce; nice satiny finish)
- \_\_\_ 170. **N G & C COLOGNE BOTTLE AND STOPPER – GREEN (VERY SCARCE COLOR; NICE IRID.; WELL MATCHED)**
- \_\_\_ 171. N G & C 5 pc. Table Set – Green (missing sugar lid; creamer is cracked)
- \_\_\_ 172. N G & C 7 pc. Water Set – Purp. (scarce; nice color)
- \_\_\_ 173. N G & C Variant Flat Plate with Plain Ext. – Amyth. (flat with a nice bright subdued irid.)
- \_\_\_ 174. N G & C Variant Flared Plate with Basketweave Ext. – Amyth. (scarce with a satiny finish)
- \_\_\_ 175. **N G & C STANDARD RUFFLED PUNCH BOWL AND BASE – DK. MARI. (GREAT COLOR AND DARK IRID.; REALLY NICE)**
- \_\_\_ 176. **(6) N G & C HANDLED PUNCH CUPS – HOREHOUND (EXTREMELY RARE BASE COLOR FOR THESE CUPS)**
- \_\_\_ 177. Pair N G & C Candlesticks – Purp. (scarce; nice color)
- \_\_\_ 178. N G & C Covered Sweetmeat Compote – Purp. (scarce item)

- \_\_\_ 179. N G & C Covered Powder Jar – Purp. (scarce; nice color)
- \_\_\_ 180. **N G & C HATPIN HOLDER – PURP. (SUPER IRID.; AND EXCELLENT EXAMPLE)**
- \_\_\_ 181. **N G & C FTD. HATPIN HOLDER – DK. MARI. (SUPER DARK COLOR AND IRID.; REALLY NICE)**
- \_\_\_ 182. N G & C 3 ftd. Turned in Centerpiece Bowl – Purp. (very scarce; nice color and irid.)
- \_\_\_ 183. **12 ½" TALL X 4 ¾" BASE N TREE TRUNK MIDSIZE SWUNG VASE – AMYTH. (VERY SCARCE; REALLY NICE SATINY FINISH)**
- \_\_\_ 184. 7 7/8" Tall x 5 ½" Top Diam. N Tree Trunk Squatty Standard Swung Vase – Amyth. (satiny; nice)
- \_\_\_ 185. N Dandelion Handled Tankard Water Pitcher – Amyth. (scarce; nice gold highlights; small chip on lip)
- \_\_\_ 186. N Dandelion Tumbler – Amyth. (nice color)
- \_\_\_ 187. N Fine Cut and Roses ftd. Ruffled Candy Dish with Fancy Int. – White (frosty finish)
- \_\_\_ 188. N Fine Cut and Roses ftd. Ruffled Rose Bowl – Green (nice color and irid.)
- \_\_\_ 189. N Fine Cut and Roses ftd. Ruffled Rose Bowl – Amyth. (nice light base color)
- \_\_\_ 190. 10 ¼" Tall N Thin Rib Standard Swung Vase – Mari.

#### START OF SECOND SESSION

- \_\_\_ 191. Top O' The Walk Hatpin and Triad Hatpin – Dark. (selling 2 for 1)
- \_\_\_ 192. Sowerby Swan Covered Butter Dish – Dk. Mari. (scarce; nice color)
- \_\_\_ 193. Sowerby Nesting Hen Covered Butter Dish – Mari. (scarce; nice color)
- \_\_\_ 194. 9 ¾" M'burg Whirling Leaves 6 Ruffled Bowl – Green (excellent satiny finish; nice)
- \_\_\_ 195. **M'BURG PEACOCK AT THE URN LG. STEMMED 6 RUFFLED COMPOTE – GREEN (RARE AND VERY DESIRABLE; EXCELLENT SATINY FINISH)**
- \_\_\_ 196. 6" M'burg Peacock 6 Ruffled Sauce with no Bee and no Beading – Amyth. (scarce; has a silvery radium finish)
- \_\_\_ 197. 5 ½" M'burg Peacock Deep Round Flared ind. Berry Bowl with no Bee and no Beading – Amyth. (radium and nice)
- \_\_\_ 198. 7 ¾" M'burg Little Stars 6 Ruffled Bowl – Green (really nice satiny finish)
- \_\_\_ 199. 7 ½" M'burg Little Stars 6 Ruffled Bowl – Mari. (another nice satiny finish)
- \_\_\_ 200. **M'BURG STRAWBERRY WREATH STEMMED 8 RUFFLED COMPOTE WITH MISSING LEAF – GREEN (RARE AND VERY DESIRABLE WITH AN ODD RUFFLE; RADIUM)**
- \_\_\_ 201. M'burg Peacock Tail Variant Stemmed 6 Ruffled Compote – Green (satiny finish)
- \_\_\_ 202. M'burg Boutonniere Stemmed 6 Ruffled Compote – Amyth. (radium and really nice)
- \_\_\_ 203. M'burg Holly Sprig 2 Handled 2 sided Card Tray with Benesch 54<sup>th</sup> Anniv. – Mari. (scarce; nice color)
- \_\_\_ 204. 10" M'burg Rays and Ribbons 6 Ruffled Bowl – Mari. (satiny)
- \_\_\_ 205. **6 ½" X 6 ¾" M'BURG BIG FISH 4 SIDED SQUARE BOWL – AMYTH. (RARE AND EXTREMELY DESIRABLE; SATINY WITH A GREAT SHAPE)**
- \_\_\_ 206. **9" M'BURG TROUT AND FLY BOWL WITH 3 IN1 EDGE – GREEN (A SUPER RADIUM FINISH; REALLY NICE)**
- \_\_\_ 207. 9 ½" M'burg Fleur de Lis I.C. Shaped Bowl – Lt. Mari. (light radium finish; scarce item)
- \_\_\_ 208. 6" M'burg Strawberry Wreath 6 Ruffled Sauce – Amyth. (radium and very desirable)
- \_\_\_ 209. 6 ¾" M'burg Grape Wreath Variant 6 Ruffled Bowl – Green (radium and really nice)
- \_\_\_ 210. **9 ¾" M'BURG HANGING CHERRIES LG. I.C. SHAPED BOWL – GREEN (VERY SCARCE; REALLY NICE SATINY FINISH)**
- \_\_\_ 211. M'burg Hanging Cherries Covered Butter Dish – Amyth. (very scarce; a silvery radium finish)
- \_\_\_ 212. 9" M'burg Hanging Cherries 6 Ruffled Bowl – Green (really tough item to find with a great radium finish)
- \_\_\_ 213. 7" M'burg Hanging Cherries I.C. Shaped Bowl – Green (really nice satiny finish)
- \_\_\_ 214. 7 ¼" M'burg Hanging Cherries I.C. Shaped Bowl – Amyth. (another really nice satiny finish)
- \_\_\_ 215. **10 ½" M'BURG SEAWEED BOWL WITH 3 IN 1 EDGE – MARI. (RARE AND ALWAYS A DESIRABLE ITEM; NICE AND SATINY)**
- \_\_\_ 216. 10" M'burg Blackberry Wreath Lg. 6 Ruffled Bowl – Green (satiny finish to this large bowl)
- \_\_\_ 217. Imperial Tiger Lily Handled Water Pitcher – Dk. Mari. (really nice color)
- \_\_\_ 218. Imperial Pansy Oval Relish Tray – Mari. (sorta pastel finish)
- \_\_\_ 219. Imperial Lustre Rose Lg. 3 ftd. Fruit Bowl – Dk. Mari. (nice dark color)
- \_\_\_ 220. **8 ½" TALL X 6" TOP FLARE IMPERIAL BEADED BULLSEYE SWUNG VASE – PURP. (SUPER ITEM; VERY SCARCE AND VERY DESIRABLE; GREAT COLOR AND IRID.)**
- \_\_\_ 221. **IMPERIAL GRAPE WATER CARAFE – PURP. (GREAT COLOR AND IRID.; A SUPER EXAMPLE)**
- \_\_\_ 222. Imperial Grape Stemmed Goblet – Purp. (another super iridized item; great example)
- \_\_\_ 223. **8 7/8" IMPERIAL COBBLESTONE LOW 8 RUFFLED BOWL – PURP. (VERY DESIRABLE; SUPER BRIGHT IRID.; REALLY NICE)**
- \_\_\_ 224. 6" Tall Imperial Miniature Morning Glory Swung Vase – Green (cute size; nice color)
- \_\_\_ 225. **IMPERIAL GRAPE 8 PC. ROUND PUNCH SET – PURP. (RARE AND VERY DESIRABLE SET; PERFECT WITH GREAT COLOR AND IRID.; WELL MATCHED)**

- \_\_\_226. Imperial Grape 10 pc. Round Punch Set – Mari. (nice color and irid.)
- \_\_\_227. Imperial Grape 8 pc. Water Set – Dk. Mari. (nice dark color)
- \_\_\_228. 11 ½" Tall Imperial Beaded Bullseye Swung Vase – Dk. Mari. (nice color)
- \_\_\_229. 11 3/8" Tall Imperial Ripple Standard Swung Vase and 8" Tall Imperial Ripple Mini Swung Vase – Mari. (selling 2 for 1)
- \_\_\_230. **9 3/8" IMPERIAL SAND AND SHELL FLAT PLATE – HELIOS GREEN (FLAT AND VERY SCARCE; HAS A SILVERY FINISH)**
- \_\_\_231. 9" Imperial Open Rose Flat Plate and 9 ¼" Imperial Grape Flared Plate – Mari. (selling 2 for 1; nice color)
- \_\_\_232. Imperial Octagon Small size Water Pitcher and (2) Ground Base Tumblers – Mari. (selling 3 pc. set for one price; nice color)
- \_\_\_233. Imperial Fashion 7 pc. Water Set – Mari. (nice color and irid.)
- \_\_\_234. Imperial Waffle Block Handled Flower Basket and Imperial Interior Panel Handled Flower Basket – Clamb. (selling 2 baskets for (1) price)
- \_\_\_235. **9" IMPERIAL COBBLESTONE 8 RUFFLED BOWL – AMYTH. (SUPER EXAMPLE WITH EXCELLENT IRID.; REALLY NICE)**
- \_\_\_236. 5 ¾" Tall Imperial Miniature Morning Glory Swung Vase and Imperial Star Medallion 2 Handled Relish Tray – Mari. (selling 2 for 1)
- \_\_\_237. 9 7/8" Imperial Octagon Lg. Deep Round Bowl – Green (unusual item; very difficult to find an old one)
- \_\_\_238. Imperial Lustre Rose ftd. Fernery – Amber (very scarce base color for this item)
- \_\_\_239. Imperial Lustre Rose ftd. Fernery – Lt. Aqua / Mari. (odd base color with a Mari. overlay)
- \_\_\_240. **14 ½" TALL X 4 ¾" BASE X 7 ¾" TOP DIAM. IMPERIAL RIPPLE SQUATTY SWUNG FUNERAL VASE – DK. MARI. (GREAT ITEM WITH A DESIRABLE SHAPE; EXCELLENT ITEM)**
- \_\_\_241. 15 5/8" Tall x 3 7/8" Base Imperial Ripple Midsize Swung Vase – Dk. Mari. (nice color and size)
- \_\_\_242. 17 3/8" Tall Imperial Morning Glory Swung Funeral Vase – Dk. Mari. (very scarce; nice color and irid.)
- \_\_\_243. 7 ¾" Tall Imperial Octagon ftd. Flared Vase – Mari. (very scarce item; tough to find)
- \_\_\_244. 10 ¾" Tall Imperial Ripple Standard Swung Vase – Violet Blue (rare base color with nice irid.)
- \_\_\_245. **7 ¼" - 7 ½" TALL X 6 ¾" TOP DIAM. IMPERIAL BEADED BULLSEYE SWUNG FLARED VASE – PURP. (ANOTHER VERY DESIRABLE ITEM WITH GREAT COLOR AND IRID.)**
- \_\_\_246. Imperial Diamond Lace 5 pc. Water Set – Purp. (typical super irid.; really nice irid.)
- \_\_\_247. **7 7/8" IMPERIAL HATTIE DEEP ROUND BOWL – PURP. (RARE AND DESIRABLE COLOR AND SHAPE; NICE)**
- \_\_\_248. **7 7/8" IMPERIAL HATTIE DEEP ROUND BOWL – PURP. (LIKE A TWIN SISTER TO THE ABOVE ITEM; NICE)**
- \_\_\_249. 4 ½" Imperial "Snowflake" Round ind. Berry Bowl – Mari. (very scarce pattern)
- \_\_\_250. 8 1/8" Tall Imperial Ribbed Swirl J.I.P. Vase – Smoke (very scarce; has great irid.; nice item)
- \_\_\_251. **4 ½" TALL IMPERIAL DOMED RUFFLED TOP ROCOCO VASE – SMOKE (ALWAYS DESIRABLE AND THIS A GREAT EXAMPLE)**
- \_\_\_252. 6" Imperial Rococco domed 6 Ruffled Bowl – Smoke (scarce; nice irid.)
- \_\_\_253. 5 ½" Imperial Interior Wide Panel Turned in Rose Bowl – Smoke (really nice irid.)
- \_\_\_254. Dugan Maple Leaf Handled Creamer – Amyth. (scarce part)
- \_\_\_255. **DUGAN STORK IN THE RUSHES WITH BEADED BAND WATER PITCHER – BLUE (VERY SCARCE; HAS A NICE SATINY FINISH)**
- \_\_\_256. Dugan Heavy Iris Tumbler – Purp. (very scarce; has super irid.)
- \_\_\_257. 6 ½" Dugan 4 Flowers Flat Plate – P. Opal. (scarce; nice opal.)
- \_\_\_258. 6 1/8" Dugan Ski Star 6 Ruffled Sauce with Compass Ext. – P. Opal. (scarce example)
- \_\_\_259. 8 7/8" Dugan Raindrops domed 10 Ruffled Bowl – P. Opal. (nice opal.)
- \_\_\_260. 11 ¼" Dugan Persian Garden Lg. I.C. Shaped Bowl – White (very scarce; nice irid.)
- \_\_\_261. Dugan Grape Delight 6 ftd. Nut Bowl – White (lg. flake on inside edge)
- \_\_\_262. Dugan Constellation 6 Ruffled Compote- White (great irid.)
- \_\_\_263. Dugan Miniature Basketweave Basket & Dugan Soda Gold Mini Handled Basket – Mari. (selling 2 for 1)
- \_\_\_264. Dugan Plain Band 2 sided Hat with Silver Plate Basket Frame – Mari. (odd; unusual)
- \_\_\_265. **6" TALL DIAMOND 4 PILLAR 4 RUFFLED SQUARE BASED VASE WITH SILVER OVERLAY – COBALT BLUE (RARE AND VERY UNUSUAL; MOST LIKELY ROCKWELL SILVER)**
- \_\_\_266. 6 ½" Tall Dugan Target Squatty Swung Vase – P. Opal. (nice opal.)
- \_\_\_267. 9 ½" Tall Dugan Spiralex Swung Vase – P. Opal. (nice opal.)
- \_\_\_268. Dugan Folding Fan Stemmed 6 Ruffled 2 sided Banana Dish – P. Opal. (odd shape; nice opal.)
- \_\_\_269. 8 ½" Dugan Paneled Cherries 3 ftd. 10 Ruffled Bowl – Dk. P. Opal. (odd shape; nice opal.)
- \_\_\_270. **DUGAN NAUTILUS WHIMSEY CREAMER – P. OPAL. (VERY SCARCE WITH NICE OPAL.)**
- \_\_\_271. 8 3/8" Dugan Ski Star domed Handgrip Plate – P. Opal. (nice color and opal.)
- \_\_\_272. **8 ¾" DUGAN SOUTACHE DOMED 6 RUFFLED BOWL – P. OPAL. (VERY SCARCE; PATTERN WITH A SATINY FINISH)**

- \_\_\_\_ 273. 9" Dugan Raindrops domed Bowl with 3 in 1 Edge – P. Opal. (nice opal.)
- \_\_\_\_ 274. 8 5/8" Dugan Fanciful low 10 Ruffled Bowl / Plate – Mari. (satiny and scarce)
- \_\_\_\_ 275. **9 1/8" DUGAN FANCIFUL FLARED PLATE – PURP. (RARE AND VERY DESIRABLE; A SUPER IRIDIZED EXAMPLE)**
- \_\_\_\_ 276. 8 5/8" Dugan Fanciful Flared Plate – White (very scarce; frosty and really nice)
- \_\_\_\_ 277. **8 3/4" DUGAN ROUND UP FLARED PLATE – BLUE (VERY SCARCE AND VERY DESIRABLE; SILVERY, GOLD IRID.)**
- \_\_\_\_ 278. **DUGAN VINTAGE BANDED PEDESTALED WATER PITCHER – MARI. (RARE ITEM HARDLY EVER SOLD; TOUGH TO FIND)**
- \_\_\_\_ 279. Dugan Vintage Banded Handled Mug – Mari.
- \_\_\_\_ 280. **DUGAN BUTTERFLY AND TULIP LG. SQUARE 4 FTD. BOWL WITH I.F.F. EXT. – PURP. (RARE AND VERY DESIRABLE; PERFECT WITH NICE COLOR AND IRID.)**
- \_\_\_\_ 281. **10 1/2" DUGAN PERSIAN GARDEN LG. I.C. SHAPED BOWL – PURP. (RARE AND VERY DESIRABLE; REALLY TOUGH TO FIND; NICE)**
- \_\_\_\_ 282. **10" DUGAN FOUR FLOWERS LG. 6 RUFFLED BOWL – PURP. (ANOTHER RARE AND VERY DESIRABLE; GREAT COLOR AND IRID.)**
- \_\_\_\_ 283. **9" DUGAN FLOWERS AND FRAMES DOMED TRI-CORNERED CRIMPED EDGE BOWL – PURP. (A SUPER EXAMPLE WITH GREAT IRID. IN A GREAT SHAPE)**
- \_\_\_\_ 284. 8" Dugan Paneled Cherries 3 ftd. 10 Ruffled Bowl – Purp. (nice example with multi-colored irid.)
- \_\_\_\_ 285. **7 3/4" DUGAN VINTAGE GRAPE DOMED DEEP 8 RUFFLED BOWL – GREEN (VERY RARE BASE COLOR; VERY DIFFICULT ITEM TO FIND; NICE)**
- \_\_\_\_ 286. 7 3/4" Dugan Six Petals 6 Ruffled Bowl – Amyth. (scarce with goldish irid.)
- \_\_\_\_ 287. **DUGAN HERON HANDLED MUG – PURP. (STILL A VERY SCARCE ITEM TO FIND; NICE IRID.)**
- \_\_\_\_ 288. Dugan Peacock at the Fountain Tumbler – Blue (nice color and irid.)
- \_\_\_\_ 289. 6 1/2" Tall Dugan Lattice and Points Swung Vase – Amyth. (satiny finish)
- \_\_\_\_ 290. **16 5/8" TALL DUGAN LINED LATTICE LG. SWUNG 9 FTD. VASE – PURP. (ABSOLUTELY SUPER ITEM; NEVER SEEN ANOTHER ONE THIS TALL)**
- \_\_\_\_ 291. 11 1/2" Tall Dugan Target Swung Vase – P. Opal. (nice opal.)
- \_\_\_\_ 292. 6 1/4" Tall Dugan Interior Swirl Tri-Cornered Bowl – P. Opal. (really nice example; nice opal.)
- \_\_\_\_ 293. Dugan Leaf Ray Ruffled Handled Nappy – Dk. P. Opal. (odd shape; nice)
- \_\_\_\_ 294. 8" Dugan Ski Star domed Tri-Cornered Bowl – Lt. P. Opal. (light opal. on edge)
- \_\_\_\_ 295. 6 7/8" Dugan Bellflower Tri-Cornered Crimped Edge Bowl – Pastel P. Opal. (odd color – a pastel shade with opal.)
- \_\_\_\_ 296. 6 5/8" Dugan Bellflower 6 Ruffled Crimped Edge Bowl – Dk. P. Opal. (nice example; nice opal.)
- \_\_\_\_ 297. Dugan Circle Scroll Tri-Cornered Hat from Tumbler – Mari. (very scarce; nice color and irid.)
- \_\_\_\_ 298. 9 1/8" Dugan Double Stem Rose domed Flared Plate – White (frosty with excellent irid.)
- \_\_\_\_ 299. Dugan Stork in the Rushes Tumbler with Beaded Band – Mari.
- \_\_\_\_ 300. **DUGAN CHERRY WREATH HANDLED WATER PITCHER – MARI. (VERY SCARCE ITEM; NICE COLOR AND IRID.)**
- \_\_\_\_ 301. Dugan Cherry Wreath Tumbler – Dk. Mari. (nice color and irid.)
- \_\_\_\_ 302. 6" Fenton Sailboats 6 Ruffled Sauce – Green (very scarce base color; nice example)
- \_\_\_\_ 303. 9 1/4" Fenton Three Fruits 12 sided Plate – Green (satiny finish)
- \_\_\_\_ 304. 9" Fenton G & C ftd. Flat Plate – Green (nice color and irid.)
- \_\_\_\_ 305. **FENTON MIKADO LG. STEMMED 8 RUFFLED COMPOTE – GREEN (RARE AND EXTREMELY DESIRABLE; GREAT COLOR AND IRID.)**
- \_\_\_\_ 306. Fenton Orange Tree Handled Loving Cup – Green (very scarce; has a satiny finish)
- \_\_\_\_ 307. Fenton Orange Tree Handled Loving Cup – Blue (another scarce item; has a satiny finish)
- \_\_\_\_ 308. **9 1/4" FENTON CAPTIVE ROSE FLARED PLATE – GREEN (RARE AND DESIRABLE; A REALLY NICE EXAMPLE)**
- \_\_\_\_ 309. 9 1/4" Fenton Captive Rose Flared Plate – Blue (scarce; has goldish highlights)
- \_\_\_\_ 310. **9 5/8" FENTON PEACOCK AND GRAPE FLARED PLATE – MARI. (VERY SCARCE AND DESIRABLE; REALLY NICE COLOR AND DETAIL)**
- \_\_\_\_ 311. (1) 9" Fenton Vintage Grape 8 Ruffled Bowl and (1) Fenton Butterfly and Berry ftd. Spooner – Mari. (selling 2 for 1; really nice color)
- \_\_\_\_ 312. 6 1/2" Fenton Acorns Deep Round Bowl – Amberina (very scarce color with a satiny finish)
- \_\_\_\_ 313. 6 3/4" Fenton Acorns Deep I.C. Shaped Bowl – Aqua / Mari. (scarce; satiny; has a manuf. flaw on edge)
- \_\_\_\_ 314. **7 3/4" FENTON ACORNS LOW 8 RUFFLED BOWL – PASTEL BLUE (RARE COLOR FOR THIS ITEM; VERY DIFFERENT)**
- \_\_\_\_ 315. **9" FENTON "BIRMINGHAM AGE HERALD – CARRIERS GREETINGS – 1911" FLAT PLATE – AMYTH. (VERY RARE AND VERY DESIRABLE; ONE OF THE BETTER EXAMPLES)**
- \_\_\_\_ 316. **8 3/4" FENTON "BIRMINGHAM AGE HERALD – CARRIERS GREETINGS – 1911" 6 RUFFLED BOWL – AMYTH. (VERY RARE AND VERY DESIRABLE; EXCELLENT EXAMPLE)**



- \_\_\_317. 9 1/2" Fenton Three Fruits 12 sided Plate – Blue (very scarce base color)
- \_\_\_318. 9" Fenton Three Fruits 12 sided Flared Plate – Green (very scarce)
- \_\_\_319. 9 5/8" Fenton Three Fruits 12 sided Flared Plate – Green / Irid. Ext. (only iridized on the ext.; an oddball)
- \_\_\_320. 9" Fenton Three Fruits 12 sided Plate – Amyth. (scarce; satiny)
- \_\_\_321. 9 1/2" Fenton Three Fruits 12 sided Plate – Mari. (scarce; satiny)
- \_\_\_322. 9 3/8" Fenton Orange Tree with Trunk Flat Plate – Clamb. (scarce)
- \_\_\_323. **9 3/8" FENTON PEACOCK AT THE URN FLAT PLATE – WHITE (VERY SCARCE; REALLY NICE IRID.; NICE EXAMPLE)**
- \_\_\_324. 8 7/8" Fenton Peacock at the Urn 6 Ruffled Bowl – Blue / Elec. Blue (really nice example)
- \_\_\_325. **8 7/8" TALL FENTON FINE RIB STANDARD SIZE SHORT SWUNG VASE – RED (A SHORTER EXAMPLE; GREAT COLOR; NICE)**
- \_\_\_326. Fenton ftd. Orange Tree Hatpin Holder – Blue (very scarce; nice)
- \_\_\_327. Fenton Sailboats Stemmed Wine Glass – Blue (scarce; nice color)
- \_\_\_328. Fenton 10 Mums Tumbler – Blue (very scarce; nice irid.)
- \_\_\_329. 5 3/4" Fenton Little Fishes 3 ftd. 6 Ruffled Sauce – Mari. (nice color and irid.)
- \_\_\_330. **FENTON KITTENS HANDLED CUP AND SAUCER – MARI. (VERY SCARCE & ALWAYS DESIRABLE)**
- \_\_\_331. 4 1/2" Fenton Kittens Flat Saucer only – Mari. (scarce; nice color)
- \_\_\_332. Fenton Kittens 4 sided Square Bowl – Mari. (scarce; nice)
- \_\_\_333. Fenton Kittens 6 Ruffled Sauce – Mari. (scarce; nice)
- \_\_\_334. Fenton Kittens Round Cereal Bowl – Dk. Mari. (really nice color)
- \_\_\_335. **19 3/4" TALL X 5 1/4" BASE X 8" TOP FLARE FENTON RUSTIC SWUNG FUNERAL VASE – AMYTH. (RARE & VERY DESIRABLE; SUPER IRID.; SUPER FLARE WITH GREAT COLOR)**
- \_\_\_336. 17 1/4" Tall x 4 1/8" Base Fenton Rustic midsize Swung Vase – Amyth. (scarce; nice color)
- \_\_\_336A. 16" Tall x 4 1/8" Base Fenton Rustin midsize Swung Vase—Blue (scarce; nice color)
- \_\_\_337. 9" Fenton Rustic Standard Swung Vase – Amyth.
- \_\_\_338. 16 1/4" Tall x 4 1/8" Base Fenton Rustic midsize Swung Vase – Green (nice color)
- \_\_\_339. 6" Tall Fenton Diamond Point Columns Squatty Swung Vase – Green (squatty guy; scarce)
- \_\_\_339A. 15"-16" Fenton Diamond Point Columns Mid-Size Swung Vase—Blue (nice color)
- \_\_\_340. **6 3/4" TALL FENTON IDYLL FTD. FLARED VASE – MARI. / CLEAR (VERY RARE AND VERY DESIRABLE; EXTREMELY TOUGH TO FIND)**
- \_\_\_341. Fenton 6 Ruffled Stemmed Compote / Vase – Green (scarce; nice)
- \_\_\_342. Fenton 6 Ruffled Stemmed Compote / Vase – Amyth. (scarce; nice)
- \_\_\_343. Fenton 6 Ruffled Stemmed Compote / Vase with Ribbed Optic Int. – Amber (scarce)
- \_\_\_344. 5 1/2" Fenton Plain Lustre ftd. 2 sided Vase – Cobalt (nice color; scarce)
- \_\_\_345. **12 1/4" TALL FENTON FINE RIB MIDSIZE SWUNG VASE – VASELINE OPAL. (VERY RARE AND VERY DESIRABLE; SMALL CHIP ON BASE)**
- \_\_\_346. 16" Tall x 3 3/4" Base Fenton Fine Rib midsize Swung Vase – Blue (scarce; nice color and irid.)
- \_\_\_347. 16 1/2" Tall x 3 3/4" Base Fenton Fine Rib midsize Swung Vase – Mari. (nice color and size)
- \_\_\_348. Fenton 2 Row Open Edge 2 sided Open Edge Hat – Powder Blue (nice color)
- \_\_\_349. 6" Fenton Peacock Tail Tri-Cornered Sauce – Amyth. (nice irid.)
- \_\_\_350. **10 1/4" FENTON TWO FLOWERS LG. BALL FTD. I.C. SHAPED BOWL – WHITE (RARE AND VERY DIFFICULT TO FIND IN THIS COLOR; NICE)**
- \_\_\_351. **10 5/8" FENTON TWO FLOWERS LG. BALL FTD. I.C. SHAPED BOWL – LIME GREEN / MARI. (ANOTHER RARE BASE COLOR FOR THIS ITEM; NICE MARI. OVERLAY)**
- \_\_\_352. **10 1/4" FENTON TWO FLOWERS LG. BALL FTD. I.C. SHAPED BOWL – AMYTH. (ANOTHER RARE BASE COLOR FOR THIS PATTERN)**
- \_\_\_353. 10 3/4" Fenton Two Flowers lg. Ball ftd. I.C. Shaped Bowl – Blue / Elec. Blue (not really rare but does have great color)
- \_\_\_354. Fenton Two Flowers Lg. ball ftd. Giant Rose Bowl – Dk. Mari. (very rare shape for this pattern; great color)
- \_\_\_355. **9 1/4" "COMPLIMENTS OF SPECTOR'S DEPARTMENT STORE" FLARED PLATE WITH HEARTS AND VINE – MARI. (RARE AND VERY DESIRABLE; ALWAYS IN DEMAND; NICE)**
- \_\_\_356. 9 5/8" Fenton Little Fishes ball ftd. 8 Ruffled Bowl – Dk. Mari. (great example; very scarce)
- \_\_\_357. 8 1/2" Fenton Autumn Acorns 8 Ruffled Bowl – Lime Green / Mari. (really nice example; scarce base color)
- \_\_\_358. **8 3/4" FENTON CHRYSANTHEMUM 8 RUFFLED BOWL – RED (RARE AND DESIRABLE; IRID. IS SPOTTY; GREAT RED)**
- \_\_\_359. 9" Fenton Chrysanthemum 8 Ruffled Bowl – Amyth. (scarce base color)
- \_\_\_360. **8 3/4" FENTON DRAGON AND LOTUS 8 RUFFLED BOWL – P. OPAL. (RARE AND VERY DESIRABLE; GREAT IRID. AND OPAL.)**
- \_\_\_361. 8 1/4" Fenton Dragon and Lotus I.C. Shaped Bowl – Non-iridized Interior Amber (scarce item; only iridized on ext.; nice color)
- \_\_\_362. 8 5/8" Fenton Holly Bowl with 3 in 1 Edge – Amyth. (scarce; nice irid.)

- \_\_\_ 363. 9" Fenton Holly 6 Ruffled Bowl – Amyth. (another item with really nice irid.)
- \_\_\_ **364. 9 ¼" FENTON HOLLY 6 RUFFLED BOWL – BLACK AMYTH. (VERY RARE BASE COLOR ESP. IN THIS SHAPE; NICE)**
- \_\_\_ **365. FENTON G & C LG. RUFFLED 3 FTD. FRUIT BOWL WITH PERSIAN MEDALLION INT. – AMYTH. (VERY RARE ITEM TO FIND; THIS IS THE LARGE SIZE; NICE)**
- \_\_\_ 366. Fenton G & C Lg. Ruffled 3 ftd. Fruit Bowl with Persian Medallion Int. – Dk. Mari. (same as above; this is the LARGE size; rare)
- \_\_\_ **367. 10" FENTON LITTLE FLOWERS LG. BOWL WITH 3 IN 1 EDGE – BLUE (REALLY NEAT BOWL; LARGE SIZE AND SHAPE; REALLY NICE)**
- \_\_\_ **368. 10 ¼" FENTON VINTAGE GRAPE LG. BOWL WITH 3 IN 1 EDGE – ODD AMYTH. SWIRLS (RARE AND UNUSUAL ITEM; HAS AN ODD AMYTH. WITH A SWIRL EFFECT)**
- \_\_\_ 369. 7 ¾" Fenton Peacock at the Urn I.C. Shaped Bowl – Blue (scarce and very attractive item)
- \_\_\_ **370. 10 ½" FENTON STAG AND HOLLY LG. BALL FTD. I.C. 8 RUFFLED BOWL – AMYTH. (VERY RARE & DESIRABLE BASE COLOR; VERY ATTRACTIVE)**
- \_\_\_ 371. 10 ½" Fenton Stag and Holly Lg. ball ftd. I.C. Shaped Bowl – Blue (very scarce and has a nice satiny finish)
- \_\_\_ 372. Fenton G & C small size 3 ftd. Ruffled Fruit Bowl with Persian Medallion Int. – Green (scarce; nice color and irid.)
- \_\_\_ **373. FENTON paneled DANDELION TANKARD WATER PITCHER – GREEN (HAS TO BE ONE OF THE BETTER EXAMPLES I'VE SEEN)**
- \_\_\_ 374. Fenton Orange Tree Standard Flared Mug – Cobalt / Mari. (satiny)
- \_\_\_ **375. FENTON ORANGE TREE 8 PC. RUFFLED PUNCH SET – BLUE (VERY SCARCE; WELL MATCHED AND VERY DESIRABLE)**
- \_\_\_ 376. Fenton Holly Stemmed 6 Ruffled Compote – Amyth. (scarce color)
- \_\_\_ 377. (2) Fenton Holly Stemmed 6 Ruffled Compote – (1) Blue; (1) Mari. (selling 2 for 1)
- \_\_\_ 378. Fenton Smooth Ray Stemmed Crimped Rose Bowl – Lime Green / Mari. (desirable item)
- \_\_\_ 379. Fenton Smooth Ray Stemmed 8 Ruffled Compote – Lime Green / Mari. (nice color)
- \_\_\_ **380. 8 ¼" FENTON PEACOCK AND GRAPE I.C. SHAPED BOWL – AMYTH. (SUPER EXAMPLE; NICE)**
- \_\_\_ 381. 8 ¼" Fenton Peacock and Grape I.C. Shaped Bowl – Blue (really nice example)
- \_\_\_ 382. 8 ¾" Fenton Peacock and Grape 8 Ruffled Bowl – Amyth. (super irid.; one edge not filled in)
- \_\_\_ 383. 8" Fenton Peacock and Grape spatula ftd. 8 Ruffled Bowl – Amyth. (nice color and irid.)
- \_\_\_ 384. Fenton Butterfly and Berry Tumbler – Dk. Mari. (super example)
- \_\_\_ 385. Fenton 10 Mums Tumbler – Mari. (scarce; nice example)
- \_\_\_ 386. Fenton Fentonia Tumbler – Mari. (scarce; nice color)
- \_\_\_ 387. Fenton Milady Tumbler – Mari. (scarce; nice color)
- \_\_\_ 388. Fenton Fluffy Peacock Tumbler – Mari. (very scarce; nice color)
- \_\_\_ 389. (1) Fenton Orange Tree Shaving Mug and (1) Fenton Orange Tree Standard Mug – Mari. (selling 2 for 1)
- \_\_\_ **390. FENTON ORANGE TREE COVERED POWDER JAR – GREEN (EXTREMELY RARE ITEM TO FIND IN THIS COLOR – VERY ATTRACTIVE)**
- \_\_\_ 391. Fenton Orange Tree Covered Powder Jar – Dk. Mari. (nice color and irid.)
- \_\_\_ **392. 9 1/8" FENTON ORANGE TREE 6 RUFFLED BOWL – GREEN (VERY SCARCE; REALLY NICE EXAMPLE; GREAT IRID.)**
- \_\_\_ 393. 9" Fenton Orange Tree with Trunk 6 Ruffled Bowl – Blue (nice color)
- \_\_\_ 394. 9" Fenton Orange Tree 6 Ruffled Bowl – White (nice irid.)
- \_\_\_ 395. 9" Fenton Orange Tree 6 Ruffled Bowl – Mari. (nice color)
- \_\_\_ 396. 9 7/8" Fenton Feathered Serpent Lg. 6 Ruffled Bowl – Amyth. (really nice example)
- \_\_\_ 397. 9 ¼" Fenton Ribbon Tie low 3 in 1 Edge Bowl / Plate – Blue (scarce; nice color)
- \_\_\_ 398. 8 5/8" Fenton Peacock Tail Bowl with 3 in 1 Edge – Amyth. (nice satiny finish)
- \_\_\_ 399. 9 ½" Fenton Persian Medallion 6 Ruffled Bowl – Blue (nice color)
- \_\_\_ **400. 9 ½" FENTON CAPTIVE ROSE FLAT PLATE – DK. MARI. (RARE AND DESIRABLE; NICE DARK COLOR AND IRID.)**
- \_\_\_ 401. 7 ¾" Fenton Horsehead Medallion Flat Plate – Mari. (scarce; really nice example)
- \_\_\_ **402. 8 ¾" FENTON PLAID I.C. SHAPED BOWL – BLUE (RARE & DESIRABLE; TOUGH SHAPE & COLOR)**
- \_\_\_ **403. 9 ¼" FENTON PLAID 8 RUFFLED BOWL – MARI. (VERY SCARCE; NICE SATINY FINISH)**
- \_\_\_ **404. 8 5/8" FENTON PEACOCK AND GRAPE I.C. SHAPED BOWL – RED / AMBERINA (RARE AND DESIRABLE; NICE COLOR WITH A SATINY FINISH)**
- \_\_\_ **405. 8" FENTON CONCORD GRAPE I.C. SHAPED BOWL – GREEN (VERY SCARCE WITH EXCELLENT COLOR AND IRID.)**
- \_\_\_ 406. 8 ¾" Fenton Concord Grape 6 Ruffled Bowl – Dk. Mari. (very scarce with excellent color and irid.)
- \_\_\_ 407. 9 ¼" Fenton Leaf Chain Flared Plate – Green (very scarce with multi-colored irid.)
- \_\_\_ 408. 9 3/8" Fenton Three Fruits 12 sided Plate – Blue (scarce with a nice satiny finish)
- \_\_\_ 409. Fenton Blackberry 2 Row 6 Ruffled Basketweave Hat – Blue

- \_\_\_ 410. **PAIR FENTON STRETCH #232 CANDLESTICKS – CELESTE BLUE (RARE AND VERY DESIRABLE PAIR; NICE COLOR)**
- \_\_\_ 411. 8 ¾" Fenton Thistle Bowl with 3 in 1 Edge – Blue (satiny finish)
- \_\_\_ 412. 9" Fenton Thistle 6 Ruffled Bowl – Mari.
- \_\_\_ 413. Fenton Peacock at the Urn Stemmed 6 Ruffled Compote – Blue (nice example)
- \_\_\_ 414. Fenton Peacock at the Urn Stemmed 6 Ruffled Compote – Mari.
- \_\_\_ 415. **9 ½" FENTON PEACOCK AT THE URN FLARED PLATE – DK. MARI. (VERY SCARCE AND VERY DESIRABLE; GREAT COLOR AND IRID.)**
- \_\_\_ 416. 9" Fenton Peacock at the Urn 8 Ruffled Bowl – Blue (scarce and desirable; nice)
- \_\_\_ 417. 8 ½" Fenton Peacock at the Urn I.C. Shaped Bowl – Amyth. (very scarce base color; satiny finish)
- \_\_\_ 418. 8 3/8" Fenton Peacock at the Urn I.C. Shaped Bowl – White (very scarce shape with excellent irid.)
- \_\_\_ 419. Fenton Stream of Hearts Stemmed 6 Ruffled Crimped Edge Compote – Mari. (scarce pattern)
- \_\_\_ 420. **9" FENTON DRAGON AND LOTUS 8 RUFFLED BOWL – RED / AMBERINA (RARE & DESIRABLE; SATINY FINISH- SORTA REVERSE AMBERINA)**
- \_\_\_ 421. 9" Fenton Dragon and Lotus 8 Ruffled Bowl – Green (dark example with a nice satiny finish)
- \_\_\_ 422. 9" Fenton Dragon and Lotus 8 Ruffled Bowl – Blue (satiny finish)
- \_\_\_ 423. 8 ¾" Fenton Dragon and Lotus 8 Ruffled Bowl – Mari. (satiny finish)
- \_\_\_ 424. 8 ¼" Fenton Dragon and Lotus I.C. Shaped Bowl – Amyth. (nice example)
- \_\_\_ 425. 8 5/8" Fenton Dragon and Lotus Bowl with 3 in 1 Edge – Amyth. (nice shape and color)
- \_\_\_ 426. 6" Fenton Ribbed ftd. J.I.P. Vase – Lt. Mari. (scarce)
- \_\_\_ 427. 12 ¼" Tall Fenton Plume Panels Swung Vase – Amyth. (nice color)
- \_\_\_ 428. 11" Tall April Showers Swung Vase – Amyth. (nice color)
- \_\_\_ 429. 10" Tall Fenton Diamond Rib Standard Swung Vase – Green (nice color)
- \_\_\_ 430. **FENTON WREATH OF ROSES 8 PC. FLARED PUNCH SET WITH VINTAGE INT. – GREEN (VERY SCARCE AND DESIRABLE SET; NICE SATINY FINISH)**
- \_\_\_ 431. **9 ½" FENTON HOLLY FLARED PLATE – GREEN (VERY SCARCE BASE COLOR; NICE FINISH)**
- \_\_\_ 432. 9 ½" Fenton Holly Flared Plate – Mari. (nice color and irid.)
- \_\_\_ 433. 9" Fenton Holly 8 Ruffled Bowl – Amyth. (nice irid.)
- \_\_\_ 434. Fenton Sailboats Stemmed 6 Ruffled Compote – Blue (scarce to find in this color; nice)
- \_\_\_ 435. Fenton Lattice and Grape 7 pc. Tankard Water Set – Dk. Mari. (dark and well matched – really attractive)
- \_\_\_ 436. Fenton Rose Wreath Stemmed 6 Ruffled Compote – Amyth.
- \_\_\_ 437. **FENTON BLACKBERRY SPRAY 6 RUFFLED HAT – RED / AMBERINA (A DARKER EXAMPLE WITH A SATINY FINISH)**
- \_\_\_ 438. Fenton Garland ftd. Rose Bowl – Dk. Mari. (nice color)
- \_\_\_ 439. 11 5/8" Fenton Fine Rib Standard Swung Vase – Blue
- \_\_\_ 440. Fenton Lattice and Grape Tumbler – Blue (nice example)

## NOTES

DONALD DORAIS  
150 HIGHLAND AVENUE  
CUMBERLAND, RI 02864

**BURNS**  
AUCTION SERVICE



Visit [www.necga.com](http://www.necga.com) for pictures and brochure, Click on carnival glass links page, Look for Burns Auction. AUCTION FLEX AVAILABLE FOR THIS AUCTION. CHECK US OUT ON AUCTION ZIP #29661.

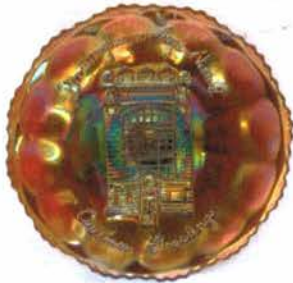
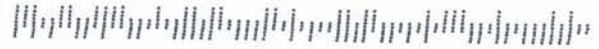


LEE MARKLEY  
BOX 306  
MENTONE, IN 46539

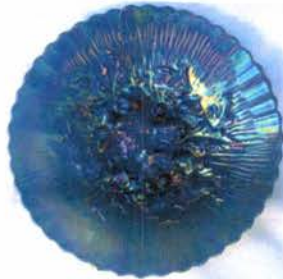
LOT# 390

**CARNIVAL GLASS AUCTION MARCH 20 & 21, 2015**

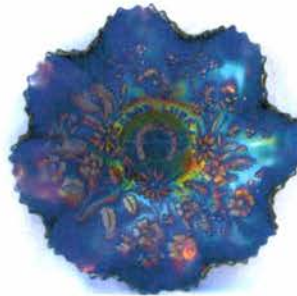
4653980306 B004



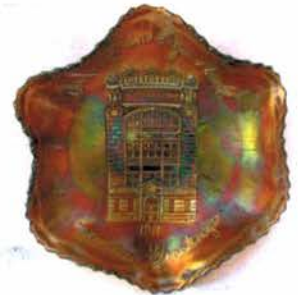
LOT# 315



LOT# 110



LOT# 37



LOT# 316



LOT# 275



LOT# 164



LOT# 410



LOT# 281



LOT# 305



LOT# 115



LOT# 200



LOT# 195