

SOUTHERN CALIFORNIA CARNIVAL
GLASS CLUB CONVENTION

Carnival Glass

2015 AUCTION

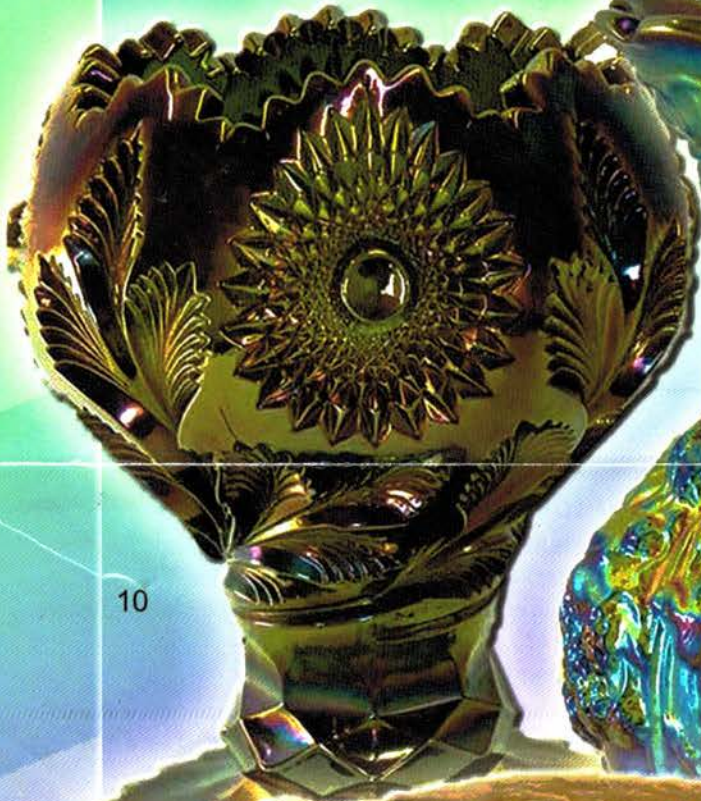
Saturday,
March 14, 9:30 a.m.



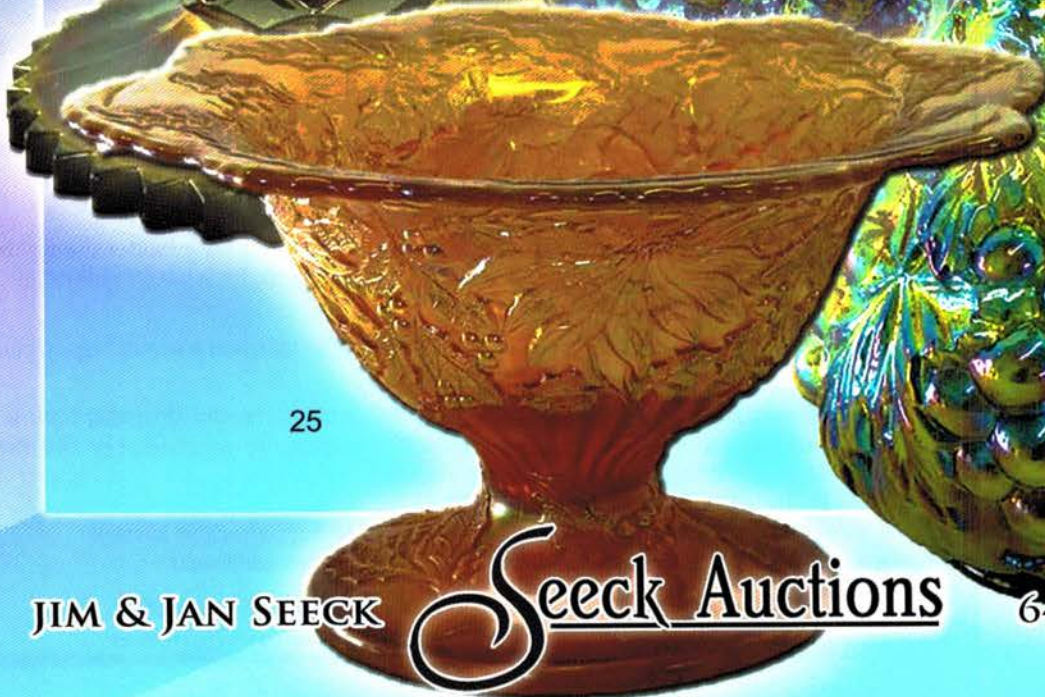
18

100

Ayres Country
Suites Hotel
Ontario, California



10



25



15

JIM & JAN SEECK

Seeck Auctions

641-424-1116

To view the complete auction, check our website at: www.seeckauction.com

JIM & JAN SEECK

CARNIVAL GLASS AUCTION

641-424-1116

Saturday, March 14, 2015 — 9:30 AM

Ayres Country Suites Hotel

1945 E.Holt Blvd. Ontario, California 91764

NO BUYER'S PREMIUM — OPEN TO THE PUBLIC

ABSENTEE BIDDING is available on-line through Auction Flex
using our online catalog at www.seeckauction.com

★ **Online absentee bidding closes Fri., March 13 at 9 p.m. CST**

Please email us and we will put you on our email mailing list for auction notices.

e-mail: jimjan@seeckauction.com

LODGING: If staying at the Hotel, call direct for room
reservations: 909-390-7778. Cutoff date for reservations is
Feb 18, 2015.

San Diego / Southern Calif. Convention info: Contact Heidi
Ritterbush at 805-492-3903 or hritterbush55@hotmail.com
Club Website: www.sccgc.webs.com

THE AUCTION THIS YEAR is Carnival Glass from the **Roy Kato** collection and the **Beverly Franzen** collection. Iridescence is fantastic! Roy and Bev were each very fussy buyers and bought beautiful glass. Looking forward to a fun convention and auction in Ontario this year!

Terms: Cash or Check, VISA, MasterCard & Discover accepted w/proper ID. 4% Clerking Fee on all purchases made using credit cards. Announcements made day of sale take precedence over any printed information.

We have 3 options for absentee bidding for our live auctions:

- 1) **If you DO NOT have internet access, you can:** Call us by phone to enter your bids at (641)424-1116 **OR** by sending the numbers of the item(s) desired and the amount bid on each to: Seeck Auctions, PO Box 377, Mason City, Iowa 50402. We would prefer you call us with your bids rather than send them in a letter.) We will enter your bids into our online bidding system.
★ Have all written bids in by **Wed., March 11.**
- 2) **Enter your bids from our website into our online catalog through the Auction Flex system.**
 - ◆ **First-time bidders: Set up your account** by creating a user name and password and filling out basic information. You will also need to **register for the auction** which will ask you to enter a valid credit card number. This card will be validated by a one time only charge of \$1 charge to your card. **You will use this user name and password for all our auctions.**
 - ◆ You are not required to pay by credit card if you are successful with your online bid. We will let you know what you owe us through an email and you can decide how you would like to pay us.
 - ◆ An exciting advantage to online bidding is that you can be notified by email if you are outbid on an item, which lets you increase your bid in time, or bid on something else. **There is a cutoff date and time, for each auction, for entering your bids online.** ★ **Online absentee bidding for this auction closes Friday, March 13 at 9 p.m. CST.**
 - ◆ Remember that just because you are the high bidder in the online catalog, this does not mean you have won the item. Your bid still needs to **beat** the floor bidders and live phone bidders. If your high bid lands with a floor bidder during the live auction, the floor bidder takes precedence. You might want to bid higher on a highly desired item for a better chance at winning its absentee bid.
 - ◆ If you do not receive an item that sold for less than your bid, assume we canceled your bid because the item had a severe manufacture problem, damage, or was not listed correctly.
- 3) **Live phone bidding is available on pieces with an estimated sale price of \$500 or more.** ★ Contact us by the **Thursday before the auction, which is March 12** We will need to know the lot# and the phone number that you can be reached at on the day of the auction. We also need your home phone number if different than the above number.

Please call with questions: 641-424-1116.

If you win an online bid you will be notified by phone or e-mail between one to three days after the auction.

There is a \$7 handling charge for each successful bid, with shipping and insurance charges additional.

ONLINE BID INCREMENTS: \$1 - \$100/\$5 \$100 - \$200/\$10 \$200 - \$700/\$25 \$700 - \$1,500/\$50
\$1,500 - \$3,000/\$100 \$3,000 - \$5,000/\$250 \$5,000+ Auctioneer's Discretion

- ____ 1. Pair of Luster Rose tumblers - purple - super pretty, starts a great run of beautiful tumblers
- ____ 2. Lot of 4 Tiger Lily tumblers - purple - all super
- ____ 3. Imperial Grape tumbler - purple - pretty
- ____ 4. Lot of 4 Grape & Gothic Arches tumblers - blue - pretty
- ____ 5. Grape Arbor tumbler - purple - pretty
- ____ 6. Lot of 2 Windmill tumblers - purple - pretty
- ____ 7. Field Flower tumbler - purple - pretty
- ____ 8. Grape & Cable tumbler - purple - pretty AND Raspberry tumbler - purple - pretty, chip on base
- ____ 9. Peacock at the Fountain tumbler - blue - super
- ____ **10. M'burg Hobstar & Feather giant rose bowl - green - super pretty w/radium irid., a dandy!**
- ____ 11. Poppy Pickle dish - blue - nice
- ____ 12. Poppy Pickle dish - marigold - pretty
- ____ **13. Illinois Soldiers and Sailors Home 7" plate - marigold - a beauty, very scarce**
- ____ 14. Windmill 8" ruffled bowl - purple - very pretty
- ____ **15. Imperial Grape water carafe - emerald green - super rare & super fantastic!**
- ____ 16. Fenton's Peacock at Urn 6 ruffled bowl - white
- ____ 17. Two Flowers lg size deep ruffled bowl - powder blue - scarce color, pretty irid.
- ____ **18. Loganberry vase - purple - fantastic irid. WOW**
- ____ 19. Loganberry vase - marigold - nice
- ____ 20. Ten Mums CRE bowl - amethyst
- ____ **21. Leaf Chain 9" plate - blue - super, super pretty, has minor nick on point**
- ____ **22. Leaf Chain 9" plate - marigold**
- ____ 23. Leaf Chain 9" plate - light marigold - many would call clambroth
- ____ 24. 1910 New Orleans Shriner's champagne - clear
- ____ **25. Christmas compote - marigold - very rare & highly desirable item, nice**
- ____ 26. N's Fine Rib 10" vase - blue - super!
- ____ **27. Fenton's Peacock at Urn 9" plate - blue - scarce, pretty**
- ____ 28. Fenton's Peacock at Urn 9" plate - marigold-dark, pretty
- ____ 29. Fenton's Peacock at Urn 9" plate - white
- ____ **30. Acorn Burrs punch bowl & base - green - super pretty**
- ____ 31. Smooth Panels 9" vase - smoke on milk glass - 3 1/2" base, 7" mouth, wonderful vase, rare!
- ____ 32. Grape Arbor tumbler - ice blue
- ____ 33. Concord ruffled bowl - amethyst - very pretty, scarce
- ____ 34. Concord ruffled bowl - marigold - nice
- ____ 35. Springtime spooner - green - if you need it, very hard to get
- ____ **36. NUART Homestead chop plate - blue - extremely rare color & pretty, minor nicks on inner rim of plate**
- ____ **37. NUART Homestead chop plate - purple-fantastic, great mold work, pretty irid., can't ask for a better one**
- ____ 38. Lions ruffled bowl - marigold
- ____ 39. Holly goblet shaped compotes - vaseline AND marigold
- ____ **40. Concord 9" plate - amethyst - fantastic example**
- ____ 41. Concord 9" plate - green - large chip on base
- ____ 42. Stretch Glass #857 Melon Rib 7 1/2" fan vase - celeste blue
- ____ **43. Imperial Grape chop plate - purple - super pretty**
- ____ **44. Wishbone & Spades 6" plate - purple**
- ____ **45. Persian Medallion 9" ruffled bowl - red - very rare bowl & nice**
- ____ 46. Kittens 2 sides up dish - marigold
- ____ 47. Good Luck PCE bowl w/ribbed back - green - nice
- ____ 48. Good Luck PCE bowl w/ribbed back - blue
- ____ 49. Good Luck PCE bowl w/ribbed back - marigold - has 1" crack on edge
- ____ **50. M'burg Ohio Star vase - amethyst - rare vase, highly desirable, nice**
- ____ 51. Hearts & Flowers ruffled compote - aqua opal - pastel, chip on base
- ____ 52. Hearts & Flowers ruffled compote - blue - has electric highlights
- ____ 53. Hearts & Flowers ruffled compote - purple - nice
- ____ 54. Hearts & Flowers ruffled compote - marigold - nice
- ____ **55. Stippled Three Fruits 9" plate w/ribbed back- aqua opal- pastel & super beautiful**
- ____ **56. Stippled Three Fruits 9" plate w/ribbed back- blue- minor nick on back of point**

- ___ 57. **Stippled Three Fruits 9" plate w/ribbed back - purple - super, super, super!**
- ___ 58. **Stippled Three Fruits 9" plate w/ribbed back - marigold - dark & nice**
- ___ 59. **Stippled Three Fruits 9" plate w/ribbed back - marigold - has super pink & yellow irid.**
- ___ 60. **M'burg Seacoast pin tray - green - very scarce, highly desirable**
- ___ 61. M'burg Seacoast pin tray - amethyst AND Grape & Cable hatpin holder - purple - both have significant damage
- ___ 62. Basketweave Open Edge JIP basket - red - very nice
- ___ 63. Basketweave Open Edge JIP basket - green - scarce color
- ___ 64. Two Flowers lg size ftd IC shaped bowl - marigold - lots of pink & yellow
- ___ 65. **Poppy Show 9" plate - blue - very scarce, chip on poppy**
- ___ 66. **Poppy Show 9" plate - marigold - very dark & pretty**
- ___ 67. Luster Rose butter dish & spooner - purple - chip on spooner base, and base of butter has large chip, both pretty
- ___ 68. **Autumn Acorn 9" plate - amethyst - very rare plate, not many known, very flat**
- ___ 69. Holly 3 in 1 edge bowl - amethyst - nice
- ___ 70. **Dozen Roses ftd round bowl - amethyst - very rare bowl, very nice**
- ___ 71. M'burg Hanging Cherries 7" IC shaped bowl - marigold - satin
- ___ 72. Lot of 2 Grape & Cable shot glasses - purple
- ___ 73. **Ballards 6" advertising plate - purple - very scarce & highly desirable**
- ___ 74. Windmill ruffled sauce - purple - pretty
- ___ 75. **M'burg Hanging Cherries round compote - amethyst - super nice example, radium & scarce**
- ___ 76. Imperial Grape 6" plate - purple
- ___ 77. **Peacocks ruffled bowl w/ribbed back - aqua opal - pastel w/super opal**
- ___ 78. **Peacocks ruffled bowl w/ribbed back - blue - nice**
- ___ 79. **Peacocks ruffled bowl w/ribbed back - marigold - pumpkin!**
- ___ 80. Peacocks ruffled bowl w/ribbed back - marigold - nice
- ___ 81. M'burg Holly Sprig 8" crimped edge deep bowl - amethyst - radium, nice
- ___ 82. Fenton Grape & Cable 7" ruffled bowl - red - scarce, nice
- ___ 83. **Lady Fingers or Daisy Rose 8" rectangular vase - marigold - very pretty & rare!**
- ___ 84. **Tornado small size vase - purple - scarce, nice**
- ___ 85. **Imperial Grape 9" plate - purple - scarce, nice**
- ___ 86. Imperial Grape 9" plate - marigold
- ___ 87. **Poinsettia & Lattice ftd ruffled bowl - blue - electric! scarce bowl & fantastic, chip on point**
- ___ 88. **Peacock & Grape 9" plate - marigold - scarce, nice**
- ___ 89. **Grape & Cable 5 pc. berry set - iridized custard - only the master is iridized but can't remember seeing another, rare**
- ___ 90. Grape Arbor tankard water pitcher & 1 tumbler - white - scarce, spout slightly polished
- ___ 91. Hearts & Flowers ruffled bowl w/ribbed back - ice blue - nice
- ___ 92. **Floral Sunburst or Daisy Spray 6 1/2" vase w/turned in top - blue - EDA, scarce & pretty**
- ___ 93. M'burg Peacocks 10" ruffled bowl - amethyst - radium, chip on edge
- ___ 94. **N's Corn vase w/stalk base - green - scarce**
- ___ 95. **Dugan Vintage 9" dome ftd plate - purple - super pretty, very rare piece, very flat**
- ___ 96. Imperial Grape 8" deep round bowl - purple
- ___ 97. **Stippled Grape & Cable Variant 9" plate w/ribbed back - sapphire - super pretty, very rare**
- ___ 98. **Stippled Grape & Cable Variant 9" plate w/BW back - purple - super pretty, this is the version that is stippled all the way to the edge, rare**
- ___ 99. Fenton Peacock at Urn goblet shaped compote - powder blue - scarce color
- ___ 100. **Fenton's Good Luck/Heart & Horseshoe ruffled bowl - marigold - very scarce & highly desirable piece, nice**
- ___ 101. Cherry Chain 6" plate - amethyst - very scarce color for these
- ___ 102. Tree Trunk mid-size 13" vase - green - super pretty example

- ___ 103. Beaded Cable rose bowl - aqua opal
- ___ **104. Hearts & Flowers 9" plate w/ribbed back- purple - couple of pinpoints on base**
- ___ **105. Hearts & Flowers 9" plate w/ribbed back - marigold - scarce, nice**
- ___ 106. Dugan Cherries ftd ruffled bowl - purple - nice
- ___ **107. Nippon ruffled bowl w/BW back- purple- has electric irid., a beauty**
- ___ **108. Nippon ruffled bowl w/BW back- purple- has super green irid., same bowl different irid.**
- ___ 109. Peacock at the Fountain berry sauce-blue - electric
- ___ **110. Ripple 17" funeral vase - purple - super nice, has 4 5/8" base, these large sizes are rare**
- ___ 111. Coral ruffled bowl - marigold
- ___ 112. Stag & Holly lg size deep ruffled ftd bowl - blue - very nice
- ___ 113. Singing Birds mug - marigold
- ___ 114. Rose Show ruffled bowl - aqua opal - pastel, heat check in base
- ___ 115. Grape & Cable spt ftd 9" plate - marigold - dark & nice
- ___ **116. Peacocks 9" plate w/ribbed back- green- scarce color & nice**
- ___ **117. Peacocks 9" plate w/ribbed back - lavender - very pretty plate**
- ___ **118. Peacocks 9" plate w/ribbed back- purple- another nice one**
- ___ 119. Orange Tree hatpin holder - blue - large chip out of foot
- ___ **120. Wide Panel epergne - marigold - very scarce, nice**
- ___ 121. Paneled water goblet - marigold - "Souvenir of Langdon, N.D."
- ___ 122. Freefold 11 1/2" vase - purple
- ___ 123. Stag & Holly lg size ftd ruffled bowl - marigold - nice
- ___ **124. N's Town Pump - purple - scarce**
- ___ **125. Greek Key 9" plate w/ribbed back - marigold - pretty w/radium type irid.**
- ___ 126. Flowers & Frames dome ftd ruffled bowl - purple - pretty
- ___ 127. Lined Lattice 8" vase - purple - pretty
- ___ 128. Grape & Cable PCE bowl w/BW back - green
- ___ 129. Jeweled Heart 5 pc. water set - blue opal - not Carnival Glass
- ___ 130. N's Bushel Basket - blue - super pretty
- ___ 131. N's Bushel Basket - amethyst - very nice
- ___ 132. N's Bushel Basket - marigold - pretty
- ___ 133. N's Bushel Basket - custard w/nutmeg stain- not Carnival Glass
- ___ 134. Strawberry PCE bowl w/BW back - purple - nick on strawberry
- ___ **135. Grape & Cable punch bowl & base - purple - very pretty set**
- ___ 136. Leaf Chain ruffled bowl - light marigold - many would call clambroth
- ___ 137. Round Up low ruffled bowl - peach opal - nice
- ___ 138. Palm Beach 4 sides up bowl - amethyst
- ___ 139. Grape & Cable water pitcher - purple - has unusual short spout, made this way
- ___ 140. Grape & Cable water pitcher - marigold - nice
- ___ **141. Holly 9" plate - green - just a fantastic plate, as pretty as the green get!**
- ___ 142. Grape & Cable breakfast sugars (2) - custard - not Carnival Glass
- ___ **143. Apple Blossom Twigs ruffled bowl w/ smooth edge - purple - pretty**
- ___ 144. Dragon & Lotus IC shaped bowl - blue
- ___ **145. M'burg Peacock at Urn master IC shaped bowl - amethyst - satin**
- ___ 146. M'burg Peacock IC shaped sauce - amethyst - satin, nice
- ___ 147. Persian Medallion hair receiver - marigold - dark, super
- ___ 148. Persian Medallion rose bowl - marigold - dark, super
- ___ 149. Stippled Strawberry PCE bowl w/ribbed back - purple - scarce, nice
- ___ **150. Dragon & Lotus ruffled bowl - red - looks red, scarce**
- ___ 151. Enameled Magnolia & Drape water pitcher- marigold
- ___ 152. M'burg Peacock at Urn 3 in 1 edge Mystery bowl - marigold - missing irid. on bird
- ___ 153. Scroll Embossed lg size ruffled compote - purple - nice
- ___ 154. Stretch Glass #612 flared 6 1/4" vase - tangerine
- ___ **155. Stippled Strawberry 9" plate w/BW back- green - very rare, highly desired**
- ___ **156. Stippled Strawberry 9" plate w/ribbed back - marigold - scarce, nice**
- ___ 157. Grape & Cable bonbon - blue - scarce color

- ___ 158. **Imperial Grape 11" ruffled bowl- purple- super pretty**
- ___ 159. Kittens cereal bowl - marigold
- ___ 160. **M'burg Courthouse ruffled bowl – amethyst - radium, nice**
- ___ 161. Grouping of 5 hatpins
- ___ 162. N's Thin Rib 13" mid-size vase – marigold- nice
- ___ 163. Stretch Glass #179 US Glass rolled rim 5" vase - wisteria - has 4 1/2" base
- ___ 164. **Captive Rose 9" plate - green - super pretty, scarce when pretty**
- ___ 165. Pansy ruffled bowl - purple - pretty
- ___ 166. **Singing Birds water pitcher – green - another very pretty piece**
- ___ 167. Grape & Gothic Arches creamer – blue - pretty
- ___ 168. Embroidered Mums ruffled bowl w/ribbed back - blue - has electric highlights, a beauty
- ___ 169. Drapery Variant small pitcher - marigold - very pretty
- ___ 170. Rustic mid-size 17" vase - green
- ___ 171. Panther master berry bowl - marigold
- ___ 172. Stretch Glass #857 Fenton flared, rolled 9 3/4" melon rib bowl - tangerine
- ___ 173. **Vintage 9" plate - green - very rare plate, not many known, nice**
- ___ 174. M'burg Hobstar & Feather water pitcher, tumbler and two punch cups - crystal - pitcher & tumbler have frosted leaves, punch cups are slightly sun colored
- ___ 175. **Stippled Grape & Cable Variant PCE bowl w/ribbed back - blue - electric & super!**
- ___ 176. Beaded Bullseye 11" vase - purple - pretty
- ___ 177. **Waterlily ftd ruffled sauce - red - cherry red color, nice**
- ___ 178. Persian Garden IC shaped bowl - peach opal - nice
- ___ 179. Fanciful 3 in 1 edge bowl - white - has pretty irid.
- ___ 180. Peacock Tail 9" ruffled bowl - blue w/slag effect - pretty
- ___ 181. Fenton #649 candlestick w/black base - marigold
- ___ 182. **Wishbone & Spades chop plate - purple - very pretty example of a rare plate**
- ___ 183. Holly ruffled compote - powder blue
- ___ 184. Holly ruffled compote - blue
- ___ 185. **Pansy hdd nappy - blue - rare color, not many blue Imperial pieces**
- ___ 186. **Twigs 4" JIP CRE miniature vase - purple - super scarce especially in this shape**
- ___ 187. Diamond Point Columns 16" vase - amethyst
- ___ 188. Stippled Rays 7" IC shaped bowl - red
- ___ 189. Stretch Glass compote w/wheel carved wheat decoration on top edge - white - 6 1/2" diam.
- ___ 190. Horse Medallion IC shaped bowl - powder blue - super pretty irid. on this neat bowl
- ___ 191. Eat Paradise Sodas 6" advertising plate – amethyst - nice
- ___ 192. Hearts & Flowers ruffled compote - blue - silvery
- ___ 193. Strawberry PCE bowl w/plain back - green
- ___ 194. **Rose Show 9" plate - blue - very pretty w/electric highlights**
- ___ 195. Lot of 5 Broken Arches punch cups - marigold
- ___ 196. Lampshade - marigold AND Stretch Glass bottom to compote - celeste blue
- ___ 197. Peacocks 9" plate w/plain back - white - pretty
- ___ 198. Vintage 3 in 1 edge sauce - marigold
- ___ 199. Three Fruits 9" plate w/plain back - green - very pretty
- ___ 200. Floral & Optic ftd round bowl - red - scarce, nice stretchy irid.
- ___ 201. Pinecone IC shaped sauce - blue
- ___ 202. **Stippled Peacocks 9" plate w/ribbed back- marigold - dark, pretty**
- ___ 203. Grape & Cable spooner & cvd sugar - custard glass - not Carnival Glass
- ___ 204. Windmill milk pitcher - purple - super pretty, large chip and small chip on base
- ___ 205. Fashion punch bowl base & 7 punch cups - marigold - 1 cup has damage
- ___ 206. Basketweave Open Edge 2 sides up basket - red
- ___ 207. Drapery 7 1/2" vase - blue - very pretty, chip on one toe
- ___ 208. Diamond Lace 7 pc. water set - purple - super pretty example, 2 tumblers have chips on base
- ___ 209. Lot of 3 Grape & Gothic Arches water goblets - custard - not Carnival Glass
- ___ 210. Fenton nut cup - wisteria

- ___ **211. Peacocks PCE bowl w/ribbed back - purple - nice**
- ___ 212. Singing Birds mug - blue
- ___ 213. Grape Arbor hatshape AND Grape & Cable 7" bowl - custard - not Carnival Glass
- ___ 214. Strawberry 9" plate w/plain back - purple - very pretty
- ___ 215. Stippled Three Fruits ruffled bowl w/ribbed back - purple - super pretty
- ___ **216. Lattice & Daisy tankard water pitcher - marigold - super nice**
- ___ 217. Pansy breakfast creamer - purple
- ___ **218. Sunflower spt ftd ruffled bowl - green - many may call emerald, nice!**
- ___ 219. Ribbed lampshade - marigold on milk glass
- ___ 220. Spittoon shaped compote vase - marigold
- ___ 221. Grape & Cable candlestick - purple
- ___ 222. Milady cvd powder jar lid - marigold
- ___ 223. Scroll Embossed deep round bowl- purple - nice
- ___ **224. Peacock & Grape 9" plate - marigold**
- ___ 225. Grape Arbor tankard water pitcher - white - large chip on lip, crack by handle
- ___ 226. Stretch Glass 1 lb candy jar - celeste blue
- ___ 227. Scroll Embossed 9" plate - purple - very pretty
- ___ **228. Greek Key ruffled bowl w/BW back - purple - electric highlights**
- ___ 229. Rose Spray ruffled compote - marigold - scarce in ruffled version
- ___ **230. Open Rose 9" plate - purple - super pretty**
- ___ 231. Grape & Cable 9" plate w/plain back - purple - nice
- ___ **232. Rose Show Variant 9" plate - marigold - very scarce & highly desirable plate, nice**
- ___ 233. Souvenir toothpick - marigold - "Souvenir of Perth, N. Dak."
- ___ 234. Petal & Fan crimped edge 6" plate - purple - super pretty
- ___ **235. Stippled Grape & Cable 9" plate w/ribbed back - green - most would call this emerald, beautiful**
- ___ 236. 1980 HOACGA Good Luck hatpin holder - lime green
- ___ 237. Poppy Show vase - blue - contemporary
- ___ 238. 1992 PNWCC Fisherman's mug AND Swan mug - both purple
- ___ 239. Loganberry vase - amber - marked IG
- ___ 240. Westmorland cvd egg - red - contemporary
- ___ 241. Westmorland swan cvd dish - red slag - contemporary
- ___ 242. Pair of Westmorland compotes - red slag - contemporary
- ___ 243. Eyewinker tumbler - red - signed Robert Hansen
- ___ 244. Eyewinker toothpick - red - signed Robert Hansen
- ___ 245. Wreathed Cherry ruffled hat - red - signed Robert Hansen
- ___ 246. Large tumbler - red - signed Robert Hansen
- ___ 247. Christmas banana boat shaped compote - blue - contemporary
- ___ 248. Christmas compote w/enamelled decoration - red - #3 of 14, hand painted by J.K. Spindler
- ___ 249. Lot of Books

Seeck Auctions
PO Box 377
Mason City, Iowa
50402

PRESORTED
FIRST CLASS MAIL
US POSTAGE
PAID
MAIL EXPEDITORS



50

Carnival Glass

2015 Auction

*Sat. March 14, 9:30 a.m.
Ayres Country Suites
Airport Hotel
Ontario, California*

T4 P1 162
LEE MARKLEY
BOX 306
MENTONE IN 46539-0306

