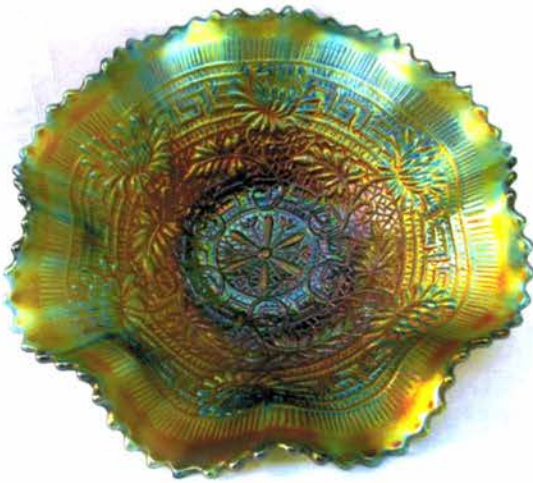


BURNS

AUCTION SERVICE



LOT# 210



LOT# 215



LOT# 100



LOT# 150



LOT# 106

**2015 TAMPA BAY
CARNIVAL GLASS
CONVENTION AUCTION
SATURDAY, FEBRUARY 7th
9:30 A.M.**

Preview:

Friday evening after banquet
and Saturday at 8:00 a.m.

DOLPHIN BEACH RESORT

4900 Gulf Blvd, St. Pete Beach, FL 33706

800-237-8916 OR 727-360-7011

www.dolphinbeach.com

Tom Burns, Auctioneer Florida License #AU3768

William Richards III Florida License #AU1621

Hello, once again!...we start the auction season with the **2015 Tampa Bay Carnival Glass Club Convention** here in good ole St. Pete Beach.

We hope you all lasted through the Holidays and we are pleased to bring you an outstanding collection of Vintage Carnival Glass to be sold without reserve.

The **Dolphin Beach Resort of St. Pete Beach** will host the event once again. To get there, stay on I-275 through St. Petersburg to Exit 17 / The Bayway; continue West thru the Toll Booth and at the end, turn right (North) on Gulf Blvd. For hotel information call the resort directly at 1-(800) 237-8916 or 1-(727) 360-7011.

The Convention will run from Wednesday, February 4th thru Saturday, February 7th. For further Convention information, call Carl Chapman at 1-(813) 899-1993 or cell: 1-(813) 625-0927 or you may contact Janet Knechtel at 1-(863) 993-2387.

The **Auction Flex Absentee Bidding System**, as well as **Auction Zip ID#29661**, will be in use. Auction Flex deadline is 6 p.m. on Friday, February 6th.

All absentee bidders note...if you are successful, I will mail the item and then call you with your total cost owed. All mailings will carry a minimum \$5 handling charge towards packing supplies, etc.. All dealers, please bring valid tax information.

For any other information, please call or write Tom Burns, 183 Sunnyside Drive, Clermont, FL 34711, Tel. 407-592-6552. Thanks.

- | | | | |
|---------|--|---------|---|
| ___ 1. | 5 1/2" Australian Kingfisher 12 Ruffled Sauce – Purp. (scarce; nice irid.) | ___ 12. | Westmoreland Smooth Rays Stemmed 6 Ruffled Compote – Blue Opal. (scarce color; light irid.) |
| ___ 2. | 9 1/2" AUSTRALIAN KANGAROO LG. 16 RUFFLED BOWL – PURP. (EXCELLENT EXAMPLE WITH SUPER DETAIL AND IRID.) | ___ 13. | 8 1/2" Westmoreland Daisy Wreath 6 Ruffled Bowl – Blue Opal. (very scarce; nice opal. on edge) |
| ___ 3. | 9 1/4" Tall Australian Swirled Gumptips Swung Vase – Purp. (very scarce; dark base color) | ___ 14. | 8" Westmoreland Scales Tri-Cornered Bowl – P. Opal. (very scarce shape; has great opal.) |
| ___ 4. | 8 3/4" TALL INWALD OR WALTHER JOSEF'S PLUME FTD. FLARED VASE – MARI. (GREAT ITEM – LOVE THE SHAPE; NICE COLOR AND DETAIL) | ___ 15. | M'BURG HANGING CHERRIES 7 PC. WATER SET – GREEN (EXTREMELY RARE SET TO FIND COMPLETE; REALLY NICE AND REALLY RARE!!) |
| ___ 5. | 5 7/8" TALL EDA KULOR PINCHED IN CYLINDER VASE – DK. MARI. (RARE; DESIRABLE; NICE DARK COLOR) | ___ 16. | 9" M'burg Fleur de Lis Tri-Cornered Crimped Edge dome ftd. Bowl – Green (rare and desirable; perfect with a nice radium finish) |
| ___ 6. | 5 1/2" Tall Riihimaki Starburst Pinched in Vase – Amber (very scarce and unusual both in color and shape) | ___ 17. | 8 5/8" M'BURG WHIRLING LEAVES I.C. SHAPED BOWL – AMYTH. (ONE OF MY FAVORITE PIECES; GREAT SHAPE AND GREAT IRID.) |
| ___ 7. | 5 1/2" Tall Riihimaki Jupiter Flared Vase – Amber | ___ 18. | 6" M'BURG STRAWBERRY WREATH TURNED IN ROSEBOWL SHAPED COLLAR BASED BOWL – AMYTH. (NEAT SHAPE; THIS ITEM TURNS IN – ROSEBOWL SHAPED – NICE) |
| ___ 8. | RISING SUN DOME FTD. WATER PITCHER – BLUE (RARE COLOR; PRETTY NICE EXAMPLE) | ___ 19. | 9 7/8" M'burg Holly Whirl Lg. 6 Ruffled Bowl – Green (nice radium finish) |
| ___ 9. | 11" Tall Unknown Maker "Feathers and Bow" Lg. Bulbous Vase – Lt. Mari. (never seen this one before; neat pattern) | ___ 20. | 9" TALL X 5 1/2" BASE M'BURG WILD ROSE KEROSENE LAMP – MARI. (RARE AND VERY DESIRABLE ITEM; RARE COLOR – NICE SIZE) |
| ___ 10. | 11" TALL EDA SEAGULLS LG. ROUND VASE – PURP. (RARE AND DESIRABLE COLOR FOR THIS ITEM; NICE) | ___ 21. | 8" M'BURG STRAWBERRY WREATH 4 SIDED SQUARE BOWL – AMYTH. (RADIUM AND A DESIRABLE SHAPE) |
| ___ 11. | 8" Tall (Maker??) Heart Swirl Lamp – Dk. Mari. (rare item – the first I've seen; heavy and dark) | ___ 22. | M'burg Peacock Tail Variant ftd. 6 Ruffled Compote – Amyth. (radium; nice) |

- ___23. 11" Dugan Persian Garden Lg. I.C. Bowl – White (scarce; nice)
- ___24. (2) 6" Dugan Persian Garden ind. I.C. Bowls – White (selling 2x the money)
- ___25. **7 ½" TALL DUGAN FORMAL FTD. HATPIN HOLDER – DK. MARI. (VERY DESIRABLE; HAS GREAT COLOR; NICE COLOR)**
- ___26. 8 1/8" Tall Dugan Circle Scroll Novelty Swung Vase – Mari. (very scarce; nice color)
- ___27. 7 ¾" Tall Dugan Circle Scroll Novelty Swung Vase – Purp. (very scarce; odd swing; nice)
- ___28. **DUGAN DAISY WEB 6 RUFFLED HAT – MARI. (VERY DESIRABLE PATTERN; NICE COLOR)**
- ___29. Dugan Circle Scroll J.I.P. Hat – Mari. (scarce shape; nice irid.)
- ___30. **11 ¼" DUGAN BUTTERFLY AND TULIP LG. FTD. SQUARE BOWL WITH I.F.F. EXT. – PURP. (RARE AND VERY DESIRABLE; PERFECT WITH GREAT COLOR – REALLY NICE!!)**
- ___30A. Dugan / N'wood G & C Perfume Bottle – Purp. (rare, great color; has a manuf. flaw on the stopper)
- ___31. 7 ¼" Dugan Question Mark ftd. Flat Plate with Georgia Peach and Puzzle Ext. – Purp. (absolutely super example but has a chip on the base)
- ___32. **5 ¼" DUGAN AMARYLLIS FTD. FLAT PLATE WITH FLORAL EXT. – PURP. (SUPER EXAMPLE OF A RARE ITEM – NICE!)**
- ___33. 10" Dugan Wishbone and Spades Lg. 8 Ruffled Bowl – Purp. (very scarce with excellent color and irid.)
- ___34. 6 ½" Dugan Wishbone and Spades Flat Plate with Basketweave Ext. – Purp. (very scarce; super irid.; nice)
- ___34A. Dugan Cherries Plate with T.C.E. and Jeweled Heart Ext. – Purp. (really nice irid.)
- ___35. **9 ¼" DUGAN VINTAGE GRAPE DOMED FTD. FLAT PLATE – AMYTH. (EXTREMELY RARE ITEM IN THIS COLOR AND SHAPE; SORTA RADIUM)**
- ___36. **8 7/8" DUGAN DOGWOOD SPRAYS DOMED 10 RUFFLED BOWL – PURP. (SUPER, SUPER EXAMPLE; GREAT IRID.)**
- ___37. 8 5/8" Dugan Flowers and Frames domed 10 Ruffled Bowl – Purp. (very scarce and attractive; nice and even)
- ___38. **11 ½" TALL DUGAN BIG BASKETWEAVE SWUNG VASE – AMYTH. (VERY DESIRABLE WITH SUPER BRIGHT IRID.; A TOUGHIE)**
- ___38A. 12" Tall Dugan Spiralex Swung Vase – Purp.
- ___39. 9 ½" Dugan Double Stem Rose domed 10 Ruffled Bowl – White (super irid.)
- ___40. **8" DUGAN FIVE HEARTS DOMED DEEP 10 RUFFLED BOWL – MARI. (VERY SCARCE PATTERN; NICE SATINY FINISH)**
- ___41. 8 ¼" Dugan Brooklyn Bridge 10 Ruffled Bowl – Mari. (very scarce; has a radium finish)
- ___42. **10 5/8" DUGAN FOUR FLOWERS FLAT CHOP PLATE WITH SODA GOLD EXT. – P. OPAL. (RARE AND DESIRABLE; SATINY AND FLAT)**
- ___43. 6 ½" Dugan Four Flowers Flat Plate with Plain Ext. – P. Opal. (flat; nice opal.)
- ___44. **8 7/8" DUGAN SOUTACHE DOMED FLARED PLATE – P. OPAL. (VERY SCARCE AND ATTRACTIVE ITEM; TOUGH SHAPE)**
- ___45. **9" DUGAN BORDER PLANTS DOMED HANDGRIP PLATE – P. OPAL. (VERY SCARCE; NICE SATINY FINISH)**
- ___46. Dugan Daisy and Lattice Tankard Water Pitcher and (3) Tumblers – Mari. (selling as a set)
- ___47. 7 ½" Tall Dugan Lined Lattice Squatty Swung Vase – Pastel Mari. (odd short size with a bright pastel finish)
- ___48. 11" Tall Dugan Target Swung Vase – Amyth. (satiny finish)
- ___49. 10 ½" Tall Dugan Target Swung Vase – Crystal Blue (non-iridized; odd color)
- ___50. **DUGAN DAISY WEB J.I.P. CRIMPED EDGE HAT – PURP. (AS GOOD AS THEY GET – SUPER!!)**
- ___51. **8" DUGAN SIX PETALS 6 RUFFLED CRIMPED EDGE BOWL – PURP. (ANOTHER SUPER IRIDIZED ITEM; GREAT EXAMPLE)**
- ___52. **8 ½" DUGAN ROUND UP FLARED PLATE/BOWL – AMYTH. (RARE AND DESIRABLE; SATINY MULTI-COLORED IRID.)**
- ___53. 9 ¾" Dugan Cosmos Lg. 10 Ruffled Bowl – Blue (scarce; nice color)
- ___54. 6 ¾" Dugan Grapevine Lattice low 8 Ruffled Plate – White (super irid.)
- ___55. **DUGAN DAHLIA 7 PC. FTD. WATER SET – WHITE / GOLD TRIM (RARE AND VERY DESIRABLE; DIFFICULT ESP. WITH GOLD TRIM)**
- ___55A. Dugan Floral and Grape Tumbler – Amyth.
- ___56. **4 ¾" TALL X 6" DIAM. U.S. GLASS COSMOS AND CANE DOMED 8 RUFFLED "PUNCH BOWL" COMPOTE – WHITE (VERY SCARCE; SUPER FROSTY WITH GREAT IRID.)**
- ___57. **4 ½" SQUARE U.S. GLASS COSMOS AND CANE 4 SIDED SQUARE WHIMSEY FROM IND. BERRY BOWL – HONEY AMBER (MY FAVORITE PIECE; I LOVE WHIMSEYS; A 4 SIDED BERRY BOWL – NEAT!!)**
- ___58. 7 ¼" Tall Jenkins Field Thistle Swung Vase – Lt. Mari. (very scarce; light in color)
- ___59. N Fern / Daisy and Plume Stemmed 6 Ruffled Compote – Green (scarce; great color and irid.)
- ___60. **N GOOD LUCK 8 RUFFLED BOWL WITH RIBBED EXT. – AQUA OPAL. (VERY RARE & DESIRABLE – PASTEL WITH REALLY ATTRACTIVE IRID.)**
- ___61. **N GOOD LUCK 8 RUFFLED BOWL WITH RIBBED EXT. – SAPPHIRE (RARE BASE COLOR; TOUGH TO FIND)**
- ___62. **N GOOD LUCK 8 RUFFLED BOWL WITH RIBBED EXT. – ELEC. BLUE (DESIRABLE WITH SUPER BLUE HIGHLIGHTS)**

- ___ 63. **N GOOD LUCK STIPPLED PLATE WITH NARROW BASE AND NON-IRIDIZED EXTERIOR – BLUE (THIS IS AN EXCEPTIONAL EXAMPLE; RARE WITH A BRIGHT RADIUM TYPE FINISH)**
- ___ 64. N Good Luck Plate with Basketweave Ext. – Green (really nice example; bright satiny finish)
- ___ 65. **N GOOD LUCK STIPPLED PLATE WITH NARROW BASE AND NON-IRIDIZED RIBBED EXT. – PASTEL MARI. (RARE ITEM WITH SUPER IRID.; TOUGH TO FIND)**
- ___ 66. N Good Luck Plate with Basketweave Ext. – Amyth. (very scarce; has a nice satiny finish)
- ___ 67. **N GOOD LUCK PLATE WITH RIBBED EXT. – MARI. (RARE VARIATION; TOUGH TO FIND)**
- ___ 68. **N GOOD LUCK BOWL WITH P.C.E. AND RIBBED EXT. – ELEC. BLUE (SUPER IRID. WITH A GREAT SHAPE)**
- ___ 69. N Good Luck Bowl with P.C.E. and Ribbed Ext. – Pastel Mari. (scarce; nice)
- ___ 70. N Good Luck 8 Ruffled Bowl with Ribbed Ext. – Blue / Elec. Blue (very scarce with nice highlights)
- ___ 71. **N GOOD LUCK 8 RUFFLED BOWL WITH RIBBED EXT. – PURP. (EXCELLENT EXAMPLE WITH SUPER IRID.)**
- ___ 72. N Good Luck 8 Ruffled Bowl with Ribbed Ext. – Lt. Amyth. / Lavender (lighter base color with nice irid.)
- ___ 73. **6 ¼" N "DREIBUS PARFAIT SWEETS" FLARED PLATE WITH BASKETWEAVE EXT. – AMYTH. (ONE OF THE BETTER EXAMPLES YOU'LL FIND)**
- ___ 74. 6 ¼" N "Fern Brand Chocolates" Flared Plate with Basketweave Ext. – Amyth. (very scarce and desirable; odd irid.)
- ___ 75. **9 7/8" N WISHBONE LG. 8 RUFFLED BOWL WITH BASKETWEAVE EXT. – EMERALD GREEN (ABSOLUTELY SUPER ITEM – BRIGHT GREEN WITH BRIGHT BLUE HIGHLIGHTS)**
- ___ 76. 8 ¾" N Wishbone ftd. Tri-Cornered Bowl with Ruffles and Rings Ext. – Dk. Mari. (very scarce shape; great color; manuf. split on edge)
- ___ 77. **8 5/8" N WISHBONE FTD. FLAT PLATE WITH RUFFLES AND RINGS EXT. – AMYTH. (VERY SCARCE; NICE BRIGHT SATINY FINISH)**
- ___ 78. **N DAISY AND DRAPE FTD. FLARED VASE – AQUA OPAL. (RARE AND DESIRABLE; NICE OPAL. AND BUTTERSCOTCH OVERLAY)**
- ___ 79. **N DAISY AND DRAPE FTD. FLARED VASE – BLUE (VERY SCARCE COLOR; NICE AVERAGE IRID.)**
- ___ 80. **9" N NIPPON FLARED PLATE WITH BASKETWEAVE EXT. – GREEN (ABSOLUTELY SUPER EXAMPLE; GREAT IRID.)**
- ___ 81. 8 7/8" N Nippon Bowl with P.C.E. and Ribbed Ext. – Purp. (very scarce with ribbed ext.; nice)
- ___ 82. 9" N Nippon Bowl with P.C.E. and Basketweave Ext. – Green (scarce; nice satiny finish)
- ___ 83. **9" N NIPPON BOWL WITH P.C.E. AND BASKETWEAVE EXT. – ICE BLUE (RARE & DESIRABLE; THESE EXAMPLES ARE DARKER; NICE)**
- ___ 84. 9" N Nippon Bowl with P.C.E. and Basketweave Ext. – White (another scarce item with great irid.)
- ___ 85. 8 ¾" N Nippon 8 Ruffled Bowl with Basketweave Ext. – Mari. (nice dark example; satiny and scarce)
- ___ 86. 9" N Nippon Bowl with P.C.E. and Ribbed Ext. – Ice Blue (very desirable; nice color and irid.)
- ___ 87. **N TORNADO LARGE SIZE VASE – GREEN (RARE; DESIRABLE; PRETTY NICE EXAMPLE)**
- ___ 88. **N TORNADO SMALL SIZE VASE – DK. MARI. (REALLY NICE DARK COLOR; VERY SCARCE)**
- ___ 89. 7 ¼" Tall N Drapery Swung Vase – Green (nice bright color and irid.; has a bunch of bubbles)
- ___ 89A. 7 ½ - 8" Tall N Drapery Swung Vase – Ice Green (scarce color; nice)
- ___ 90. **10 ½" TALL N DIAMOND POINT SWUNG VASE – SAPPHIRE (VERY RARE & EXTREMELY DESIRABLE; GREAT BASE COLOR)**
- ___ 91. **9" TALL N DIAMOND POINT SWUNG VASE – AQUA OPAL. (RARE AND DESIRABLE; NICE OPAL. WITH A TOUCH OF BUTTERSCOTCH)**
- ___ 92. **10 ¼" TALL N DIAMOND POINT SWUNG VASE – ICE GREEN (RARE AND DESIRABLE; NICE IRID.)**
- ___ 93. **10 ¼" TALL N DIAMOND POINT SWUNG VASE – ICE BLUE (RARE AND DESIRABLE; REALLY NICE FLARE AND IRID.)**
- ___ 94. 9 ½" Tall N Diamond Point Swung Vase – Blue (rare base color for this pattern)
- ___ 95. 6 7/8" Tall N Diamond Point Swung Vase – Dk. Mari. (squatty and a beaut! Dark and even)
- ___ 96. N Corn Vase with Plain Base – Mari. (rare and desirable; average irid. and color)
- ___ 97. **N CORN VASE WITH STALK BASE – GREEN (RARE AND DESIRABLE – NICE COLOR AND IRID.)**
- ___ 98. **N RASPBERRY TUMBLER – ICE GREEN (RARE WITH SUPER COLOR AND IRID.)**
- ___ 99. **(2) N RASPBERRY TUMBLERS – ICE BLUE (ANOTHER COUPLE RARE ITEMS; SELLING SO MUCH EACH)**
- ___ 100. **18 ½" TALL X 5 ¼" BASE N TREE TRUNK SWUNG FUNERAL VASE – ICE BLUE (WHAT CAN YOU SAY...ABSOLUTELY FANTASTIC; ONE OF 3 KNOWN; SLIGHT PEELING ON EDGE)**
- ___ 101. **12 ½" TALL X 4 5/8" BASE N TREE TRUNK MIDSIZE SWUNG VASE – ICE BLUE (ANOTHER RARE AND VERY DESIRABLE ITEM – GREAT COLOR AND IRID.)**
- ___ 102. 10" Tall N Tree Trunk Standard Swung Vase – Ice Blue (very scarce and nice)
- ___ 103. 10 ½" Tall N Tree Trunk Standard Swung Vase – White (scarce with nice irid.)
- ___ 104. **10 ¾" TALL N TREE TRUNK STANDARD SWUNG VASE – ICE GREEN (RARE AND DESIRABLE; REALLY NICE COLOR AND IRID.)**
- ___ 105. 6 5/8" N Tree Trunk Squatty Swung Vase with a 4 ¼" Top Span – Ice Green (whatta cutie; great size and color; may have tiny flake on base)

- ___ 106. **13 1/4" TALL X 5 1/4" BASE X 8" TOP SPAN N TREE TRUNK ELEPHANTS FOOT SWUNG FUNERAL VASE – PURP. (WHAT AN EXCELLENT EXAMPLE; EXTREMELY RARE WITH SUPER COLOR AND IRID.)** ___ 128. **9" N STRAWBERRY PLATE WITH BASKETWEAVE EXT. – MARI. WITH OPAL. TIPS (RARE VARIATION – HAS OPAL. ON EDGE)**
- ___ 107. 13" Tall x 4 3/4" Base N Tree Trunk Midsize Swung Vase – Purp. (very scarce with great color and irid.) ___ 129. **8 3/4" N STRAWBERRY 8 RUFFLED BOWL WITH BASKETWEAVE EXT. – MARI. WITH OPAL. TIPS (THE BOWL EXAMPLE OF ABOVE ITEM; OPAL. ON EDGE)**
- ___ 108. 7 1/2" Tall N Tree Trunk Squatty Standard Swung Vase – "The Leaning Tower of Pisa" – Amyth. (whatta cutie; love the lean) ___ 130. **8 3/4" N STRAWBERRY 8 RUFFLED BOWL WITH PLAIN EXT. – EMERALD GREEN (SUPER, SUPER EXAMPLE – BRIGHT IRID. – WOW!)**
- ___ 109. 9 7/8" Tall N Tree Trunk Standard Swung Vase – Amyth. (nice irid.) ___ 131. 9 1/8" N Strawberry Plate with Basketweave Ext. – Green (nice satiny example – nice irid.)
- ___ 110. **9 3/4" TALL N TREE TRUNK J.I.P. SWUNG VASE – AMYTH. (VERY RARE SHAPE; NOT TO MANY KNOWN IN ANY COLOR)** ___ 132. **9" N G & C STIPPLED BOWL WITH P.C.E. AND RIBBED EXT. – AQUA OPAL. (EXTREMELY RARE ITEM WITH NICE PASTEL FINISH)**
- ___ 111. 10 5/8" Tall N Tree Trunk Standard Swung Vase – Lt. Amyth. (nice irid. and really nice base color) ___ 133. N G & C Covered Sweetmeat Compote – Purp. (scarce; nice irid.)
- ___ 112. **18 1/4" TALL X 5 1/4" N TREE TRUNK SWUNG FUNERAL VASE WITH PLUNGER BASE – BLUE (ANOTHER VERY DESIRABLE ITEM WITH NICE IRID.)** ___ 134. **N G & C LG. RUFFLED OPEN COMPOTE – PURP. (VERY SCARCE AND UNDERPRICED; NICE IRID.)**
- ___ 113. 7 3/8" Tall N Tree Trunk Squatty Standard Swung Vase – Blue (rare and desirable; really attractive) ___ 135. **9 1/4" N G & C VARIANT STIPPLED PLATE WITH NON-IRIDIZED RIBBED EXT. WITH NARROW BASE – BLUE / ELEC. BLUE (RARE AND VERY DESIRABLE – NICE BLUE HIGHLIGHTS)**
- ___ 114. 10 1/4" Tall N Tree Trunk Standard Swung Vase – Blue (scarce base color) ___ 136. 9" N G & C Variant Stippled Plate with "Old Rose Distillery Co. – Wines and Liquors – Chicago" – Green (rare and desirable; great irid. with advert. on base)
- ___ 115. **12 3/4" TALL N TREE TRUNK MIDSIZE SWUNG VASE – BLUE (VERY SCARCE; REALLY NICE COLOR AND SIZE)** ___ 137. **6" N PEACOCKS AT THE URN IND. I.C. BOWL – GREEN / EMERALD GREEN (ABSOLUTELY SUPER EXAMPLE; GREAT COLOR AND IRID.)**
- ___ 116. 10 1/4" Tall N Tree Trunk Standard Swung Vase – Blue (sorta has Elec. Blue highlights) ___ 138. 5 1/2" N Peacock at the Urn ind. I.C. Bowl – Elec. Blue (another really super example; great irid.)
- ___ 117. 11 1/4" Tall N Tree Trunk Standard Swung Vase – Non-iridized Black Amyth. (can't say I've seen too many of these – tough) ___ 139. **9 1/2" N PEACOCK AT THE URN LG. I.C. BOWL – ICE GREEN (RARE AND DESIRABLE; GREAT COLOR AND IRID.)**
- ___ 118. 6 3/4" Tall N Tree Trunk Squatty Standard Swung Vase with a 5 1/8" Span – Green (scarce size; nice squatty example) ___ 140. **8 7/8" N PEACOCKS PLATE WITH RIBBED EXT. – GREEN (RARE BASE COLOR; ALWAYS POPULAR)**
- ___ 119. 10 1/4" N Tree Trunk Standard Swung Vase – Green (nice color and irid.) ___ 141. 9 1/4" N Peacocks Plate with Ribbed Ext. – Amyth. (scarce; nice bright irid.)
- ___ 120. **13" TALL X 4 5/8" BASE N TREE TRUNK MIDSIZE SWUNG VASE – GREEN (WHAT'S SCARCE ABOUT THIS IS THE FLARE; REALLY NICE)** ___ 142. **9 1/8" N PEACOCKS PLATE WITH RIBBED EXT. – BLUE / ELEC. BLUE (VERY SCARCE; NICE COLOR AND BLUE HIGHLIGHTS)**
- ___ 121. 9 3/4" N Tree Trunk Standard Swung Vase – Green (really nice color and irid.) ___ 143. 9" N Peacocks Plate with Ribbed Ext. – White (scarce; nice irid.)
- ___ 122. 12" Tall x 4 5/8" Base N Tree Trunk midsize Swung Vase – Mari. (another neat flare to this midsize vase) ___ 144. 9 1/8" N Peacocks Plate with Ribbed Ext. – Dk. Mari. (very scarce; really nice color and irid.)
- ___ 123. 10 1/4" N Tree Trunk Standard Swung Vase – Mari. (nice color and irid.) ___ 145. 8 3/4" N Peacocks Bowl with P.C.E. and Ribbed Ext. – Amyth. (very scarce; nice irid.)
- ___ 124. 8 1/2" N Strawberry 8 Ruffled Bowl with Basketweave Ext. – Amyth. (satiny finish) ___ 146. 9" N Peacocks Stippled Bowl with P.C.E. and Narrow Base and Ribbed Ext. – Blue (very scarce item; gold highlights)
- ___ 125. **9" N STRAWBERRY STIPPLED PLATE WITH RIBBED EXT. – GREEN (RARE AND DESIRABLE WITH A BRIGHT FINISH – NICE)** ___ 147. 8 3/4" N Peacocks Flared Plate with Ribbed Ext. – Ice Green (scarce; nice irid.)
- ___ 126. 9 1/4" N Strawberry Stippled Plate with Ribbed Ext. – Purp. (very scarce; nice color and irid.) ___ 148. 9" N Peacocks Plate with Plain Ext. – Green (rare variation; goldish highlights)
- ___ 127. 9" N Strawberry Plate with Basketweave Ext. – Purp. (one of the best examples with a basketweave ext. I've seen) ___ 149. 8 3/4" N Peacocks 8 Ruffled Bowl with Ribbed Ext. – Dk. Mari. (scarce; super color and irid.)

- ___ 150. **N PEACH HANDLED WATER PITCHER – GREEN (EXTREMELY RARE NORTHWOOD ITEM; 1ST REPORTED IRIDIZED GREEN PEACH EXAMPLE; ODD OLIVE GREEN TINT WITH GOLDISH HIGHLIGHTS; SUPER, SUPER!!)**
- ___ 151. **9 ¼" N GREEK KEY PLATE WITH BASKETWEAVE EXT. – MARI. (RARE; NICE EVEN SATINY FINISH; REALLY NICE)**
- ___ 152. 8 5/8" N Greek Key 8 Ruffled Bowl with Basketweave Ext. – Dk. Mari. (super, super example; as dark as can be; nice!)
- ___ 153. 8 ¾" N Greek Key Bowl with P.C.E. and Basketweave Ext. – Green (scarce shape; really nice satiny finish)
- ___ 154. **N CORN VASE WITH STALK BASE – GREEN (RARE AND DESIRABLE; NICE BRIGHT HIGHLIGHTS)**
- ___ 155. **N ROUND HANDLED BUSHEL BASKET – SMOKE (SUPER, SUPER IRID.; YA JUST CAN'T BEAT IT)**
- ___ 156. N Round Handled Bushel Basket – Green (very scarce color; nice)
- ___ 157. N Round Handled Bushel Basket – Blue (really nice irid.)
- ___ 158. N Round Handled Bushel Basket – Aqua with Opal. Edge (very desirable; has a butterscotch overlay)
- ___ 159. N Eight Sided Handled Bushel Basket – Ice Blue (rare and desirable; getting tough to find)
- ___ 160. **9 ¾" N ROSE SHOW FLARED PLATE – LIME ICE GREEN (RARE AND BEAUTIFUL ITEM; GOTTA LOVE THE COLOR)**
- ___ 161. **9 5/8" N ROSE SHOW FLARED PLATE – ICE BLUE (ANOTHER TOUGH ITEM; NICE PASTEL HIGHLIGHTS)**
- ___ 162. **9 ½" N ROSE SHOW FLARED PLATE – BLUE (VERY DESIRABLE; HAS BRIGHT BLUE HIGHLIGHTS)**
- ___ 163. **8 ¾" N ROSE SHOW 8 RUFFLED BOWL – ICE GREEN OPAL. (RARE PASTEL EXAMPLE WITH SUPER IRID.)**
- ___ 164. N Memphis Handled Punch Cup – Ice Blue (scarce color)
- ___ 165. **N ORIENTAL POPPY TANKARD WATER PITCHER WITH RIBBED INT. – ICE BLUE (RARE AND EXTREMELY DESIRABLE; SUPER IRID.)**
- ___ 166. **9 ¼" N POPPY SHOW FLARED PLATE – BLUE (VERY SCARCE AND VERY DESIRABLE; NICE AVERAGE IRID.)**
- ___ 167. 9" N Poppy Show Deep Flared Plate – Mari. (nice dark color; sorta deep shape)
- ___ 168. **N PEACOCK AT THE FOUNTAIN TUMBLER – EMERALD GREEN (SUPER, SUPER EXAMPLE; BRIGHT IRID.)**
- ___ 169. N Peacock at the Fountain Tumbler – Dk. Mari. (super dark color)
- ___ 170. **N PEACOCK AT THE FOUNTAIN WATER PITCHER – BLUE (VERY SCARCE WITH LOTS OF BLUES; NICE)**
- ___ 171. N Peacock at the Fountain Tumbler – Elec. Blue (super example; nice)
- ___ 172. N Peacock at the Fountain Punch Bowl, Base and (3) Cups – Mari. (scarce set; base is satiny)
- ___ 173. N Fine Cut and Roses ftd. 6 Ruffled Candy Dish with Fancy Int. – Aqua Opal. (super pastel; great opal.; some minor foot roughness)
- ___ 174. N Poppy Ruffled Relish Tray with Ribbed Ext. – Ice Blue (rare and desirable; nice irid.; manuf. split on mold line)
- ___ 175. **8 ¾" N HEART AND FLOWERS BOWL WITH P.C.E. AND RIBBED EXT. – ICE BLUE (SUPER, SUPER EXAMPLE; GREAT COLOR AND IRID.)**
- ___ 176. **9 1/8" N HEARTS AND FLOWERS FLARED PLATE WITH RIBBED EXT. – MARI. (RARE AND DESIRABLE; NICE COLOR AND PASTEL FINISH)**
- ___ 177. 9 ¼" N Hearts and Flowers Flared Plate with Ribbed Ext. – Purp. (very scarce with nice irid.; it's a bit crooked)
- ___ 178. 8 5/8" N Hearts and Flowers 8 Ruffled Bowl with Ribbed Ext. – Dk. Mari. (super color and irid.; really nice dark example)
- ___ 179. 8 ¼" N Hearts and Flowers 8 Ruffled Bowl with Ribbed Ext. – White (scarce; nice and frosty)
- ___ 180. **N HEARTS AND FLOWERS STEMMED 6 RUFFLED COMPOTE WITH RIBBED EXT. – RENNINGER BLUE (RARE AND VERY DESIRABLE; TOUGH COLOR TO FIND)**
- ___ 181. N Hearts and Flowers Stemmed 6 Ruffled Compote with Ribbed Ext. – White (scarce; frosty)
- ___ 182. **N HEARTS AND FLOWERS STEMMED 6 RUFFLED COMPOTE WITH RIBBED EXT. – AQUA OPAL. (VERY SCARCE AND VERY DESIRABLE; NICE IRID.)**
- ___ 183. N Hearts and Flowers Stemmed 6 Ruffled Compote with Ribbed Ext. – Mari. (scarce and nice)
- ___ 184. N Drapery Rose Bowl with Plain Edge – Amyth. (scarce variation; nice irid.)
- ___ 185. **N WISHBONE BULBOUS WATER PITCHER – AMYTH. (RARE AND VERY DESIRABLE; PERFECT WITH NICE IRID.)**
- ___ 186. (2) N Wishbone Tumblers – Amyth. (selling 2x the money; nice examples)
- ___ 187. **8 ¾" N THREE FRUITS MEDALLION SPATULA FTD. 8 RUFFLED BOWL WITH PLAIN EDGE AND MEANDER EXT. – AQUA OPAL. (PASTEL AND VERY DESIRABLE; REALLY NICE)**
- ___ 188. 8 ¾" N Three Fruits Medallion Spatula ftd. 8 Ruffled Bowl with Meander Ext. – Amyth. (nice color and irid.)
- ___ 189. N Fruit and Flowers Stemmed 2 Handled Bon Bon – Aqua Opal. (pastel and very desirable; really nice)
- ___ 190. **8 7/8" N THREE FRUITS STIPPLED PLATE WITH RIBBED EXT. – ELEC. BLUE (ABSOLUTELY SUPER EXAMPLE; BRIGHT BLUES)**
- ___ 191. **N FRUIT AND FLOWERS STIPPLED STEMMED 2 HANDLED BON BON – ELEC. BLUE (SUPER IRID.; REALLY, REALLY NICE EXAMPLE)**

- ___ 192. 9" Three Fruits Stippled Plate with Ribbed Ext. – Blue / Elec. Blue (very scarce; nice blue highlights)
- ___ 193. N Fruit and Flowers Stippled Handled Bon Bon – Blue (another nice example)
- ___ 194. 9" N Three Fruits Stippled Plate with Ribbed Ext. – Blue (very scarce; edge has a dent)
- ___ 195. 8 7/8" N Three Fruits Stippled 8 Ruffled Bowl with Ribbed Ext. – Aqua with Opal. Tips (rare and desirable; nice pastel finish and opal. tips)
- ___ 196. **8 3/4" N THREE FRUITS 8 RUFFLED BOWL WITH PLAIN EXT. – SMOKE (VERY SCARCE BASE COLOR WITH GREAT IRID.)**
- ___ 197. N Butterfly 2 Handled 4 sided Bon Bon with Plain Ext. – Green (nice color and irid.)
- ___ 198. **10 3/4" TALL N LEAF COLUMNS SWUNG VASE – ICE BLUE (RARE ITEM WITH NICE PASTEL COLORS)**
- ___ 199. 10 7/8" Tall N Leaf Columns Swung Vase – White (very scarce; nice and frosty)
- ___ 199A. 7 1/2" Tall N Leaf Columns Squatty Swung Vase – Green (nice color; scarce pattern)
- ___ 200. **11" TALL N THIN RIB STANDARD SWUNG VASE – VASELINE (I BETCHA THIS THING WILL GLOW!! SUPER IRID.)**
- ___ 201. **10 5/8" TALL N THIN RIB STANDARD SWUNG VASE – CELESTE BLUE (ANOTHER SUPER COLORED ITEM)**
- ___ 202. 10" Tall N Thin Rib Standard Swung Vase – Ice Green (very scarce; nice pastel finish)
- ___ 203. 9 5/8" Tall N Thin Rib Standard Swung Vase – Ice Blue (another nice pastel item)
- ___ 204. 11 1/2" Tall N Thin Rib Standard Swung Vase – Blue (scarce base color; nice)
- ___ 205. 10 3/4" Tall N Thin Rib Standard Swung Vase – Purp. (nice color and irid.)
- ___ 206. 10 5/8" Tall N Thin Rib Standard Swung Vase – Green (really nice irid.)
- ___ 207. **N ACORN BURR 7 PC. WATER SET – PURP. (RARE AND DESIRABLE; NICE COLOR AND WELL MATCHED)**
- ___ 208. 8 3/4" N Sunflower 8 Ruffled Bowl with Meander Ext. – Mari. (nice pastel finish)
- ___ 209. **N SINGING BIRD 7 PC. WATER SET – GREEN (RARE AND DESIRABLE WITH GREAT HIGHLIGHTS – REALLY NICE)**
- ___ 210. **8 1/2" N EMBROIDERED MUMS 8 RUFFLED BOWL WITH RIBBED EXT. – SAPPHIRE (EXTREMELY RARE WITH A SUPER BRIGHT YELLOW IRID.; IT'S KILLER!)**
- ___ 211. **8 3/4" N EMBROIDERED MUMS 8 RUFFLED BOWL WITH RIBBED EXT. – HOREHOUND (RARE AND DESIRABLE BASE COLOR; TOUGH TO FIND)**
- ___ 212. 8 3/4" N Embroidered Mums 8 Ruffled Bowl with Ribbed Ext. – Purp. (very scarce; nice color & irid.)
- ___ 213. 6 1/8" N Wild Strawberry Hand Grip Plate with Basketweave Ext. – Amyth. (rare size for this item; nice and satiny)
- ___ 214. N Grape Arbor Tankard Pitcher and (3) Tumblers – Dk. Mari. (nice color and irid.; selling as a set)
- ___ 215. **10 1/4" IMPERIAL HOMESTEAD CHOP PLATE – SIGNED NUART – GREEN (VERY RARE AND EXTREMELY DESIRABLE; SUPER COLOR AND IRID.)**
- ___ 216. **10 1/4" IMPERIAL HOMESTEAD CHOP PLATE – SIGNED NUART – MARI. (RARE & DESIRABLE; NICE COLOR AND IRID.)**
- ___ 217. **10 1/4" IMPERIAL HOMESTEAD CHOP PLATE – NOT SIGNED – PURP. (RARE AND DESIRABLE; EXCELLENT COLOR AND IRID.)**
- ___ 218. 9 3/4" Imperial Pansy low 8 Ruffled Plate – Lt. Amyth. (sorta lavender lookin; bright irid.; nice)
- ___ 219. 4 7/8" Imperial Flute One Handled Nappy – Purp. (a cutie and quite rare; tough to find)
- ___ 220. **IMPERIAL GRAPE HANDLED WATER PITCHER – PURP. (VERY SCARCE AND DESIRABLE; SUPER IRID.)**
- ___ 221. (4) Imperial Grape Tumblers – Purp. (scarce, nice; 3 are ok; one has tiny chip on base; selling x4)
- ___ 222. 4 3/8" Tall x 5 3/4" Diam. Imperial Embossed Scroll Stemmed 8 Ruffled Compote – Purp. (super irid.)
- ___ 223. Imperial Flute and Cane Tankard Milk Pitcher – Dk. Mari. (very scarce; nice dark color)
- ___ 224. 5 1/4" Tall Imperial File domed 6 Ruffled Vase – Mari. (very scarce item; nice average color)
- ___ 225. 11 3/8" Tall Imperial Freefold Odd Swung Vase – Purp. (super shape with great color and irid.)
- ___ 226. 4 3/4" Tall Imperial Miniature Morning Glory Short Swung Vase – Purp. (cute size; nice color and irid.)
- ___ 227. 12 7/8" Tall x 3 1/4" Base Imperial Ripple midsize Swung Vase – Purp. (scarce; nice color and irid.)
- ___ 228. 7 1/4" Tall x 2 7/8" Base Imperial Ripple Squatty Swung Vase – Purp. (cute size; nice color and irid.)
- ___ 229. **IMPERIAL HEAVY GRAPE FLARED PUNCH BOWL AND BASE – MARI. (RARE ITEM IN ANY COLOR; NICE IRID.)**
- ___ 230. **13" TALL IMPERIAL WAFFLE BLOCK AND HOBSTAR LG. FLOWER BASKET – PASTEL MARI. (RARE ITEM AND IN A SCARCE COLOR; NICE)**
- ___ 231. 9" Tall Imperial Big Basketweave Handled Flower Basket – Mari. (very scarce pattern; nice color)
- ___ 232. **11 1/8" IMPERIAL STRETCH WIDE PANEL FLAT CHOP PLATE – RED (SUPER SIZE WITH SUPER COLOR AND IRID.)**
- ___ 233. 7 1/2" Imperial Stretch Wide Panel Deep Round Bowl – Red (great color and irid.; really nice)
- ___ 234. **10 2/8" TALL X 4 3/8" BASE IMPERIAL INTERIOR WIDE PANEL SQUATTY SWUNG VASE – UNIRIDIZED RUBY RED (EXTREMELY RARE ITEM; SIGNED WITH IRON CROSS)**
- ___ 235. **11 3/4" TALL X 5 1/4" BASE X 9 7/8" DIAM. IMPERIAL STRETCH INTERIOR WIDE PANEL SQUATTY SWUNG FUNERAL VASE – TEAL (ABSOLUTELY SUPER SIZE WITH GREAT COLOR AND IRID.)**

236. 6 3/4" Tall x 3 3/8" Base x 6" Diam. Imperial Stretch Interior Wide Panel Squatty Swung Vase – Teal (very scarce; great color and irid.)
237. **10 5/8" TALL X 5 1/2" BASE X 11 5/8" DIAM. IMPERIAL INTERIOR WIDE PANEL SQUATTY SWUNG FUNERAL VASE – PASTEL MARI. (ABSOLUTELY SUPER SIZE WITH BRIGHT IRID.)**
238. Imperial 474 Lg. size Water Pitcher – Dk. Mari. (scarce; nice dark color)
239. Imperial 474 Tumbler – Dk. Mari. (nice color)
240. **10 3/8" IMPERIAL HATTIE FLARED CHOP PLATE – MARI. (RARE AND VERY DESIRABLE; GREAT COLOR AND IRID. – REALLY NICE!)**
241. **11 1/4" IMPERIAL HEAVY GRAPE CHOP PLATE – PURP. (RARE WITH SUPER COLOR AND SUPER IRID.)**
242. 8 3/4" Imperial Cobblestone 8 Ruffled Bowl – Amyth. (another super iridized item with lighter base color)
243. 3 1/8" Tall x 3 1/4" Diam. Imperial Embossed Scroll Miniature Round Stemmed Compote – Amyth. (rare with a desirable shape; nice)
244. 8" Tall x 4 3/4" Base Imperial Zipper Loop Kerosene Lamp – Smoke (scarce size with excellent irid.)
245. **10" TALL X 8" DIAM. IMPERIAL GOTHIC ARCHES SWUNG VASE – SMOKE (RARE AND VERY DESIRABLE WITH EXCELLENT IRID.)**
246. **10" TALL X 7" DIAM. IMPERIAL GOTHIC ARCHES SWUNG VASE – DK. MARI. (ANOTHER RARE AND VERY DESIRABLE; GREAT COLOR)**
247. 11 1/4" Tall Imperial Beaded Bullseye Swung Vase – Amyth. (scarce; nice irid.)
248. 11 3/8" Tall Imperial Beaded Bullseye Swung Vase – Green / Mari. (scarce with a Mari. overlay)
249. 9 1/2" Tall Imperial Beaded Bullseye Swung Vase – Helios Green (odd shape)
250. **13 1/4" TALL X 4 7/8" BASE X 8" DIAM. IMPERIAL MORNING GLORY SWUNG FUNERAL VASE – AMBER (VERY RARE BASE COLOR; DIFFICULT TO FIND)**
251. **13 1/4" TALL X 4 7/8" BASE X 8 5/8" DIAM. IMPERIAL MORNING GLORY SWUNG FUNERAL VASE – PURP. (RARE AND VERY DESIRABLE; GREAT COLOR AND IRID.)**
252. **15 5/8" TALL X 4 7/8" BASE X 8" DIAM. IMPERIAL MORNING GLORY SWUNG FUNERAL VASE – SMOKE (VERY RARE; TOUGH ITEM TO FIND)**
253. 16" Tall x 4 7/8" Base x 6 5/8" Diam. Imperial Morning Glory Swung Funeral Vase – Mari. (very scarce with dark color and irid.)
254. **5 3/4" TALL X 3 3/8" BASE X 6" DIAM. IMPERIAL PARLOR PANELS SQUATTY FLARED VASE – PURP. (RARE AND VERY DESIRABLE ITEM IN THIS SIZE AND COLOR)**
255. **IMPERIAL POPPY SHOW BULBOUS VASE – MARI. (NICE DARK SATINY EXAMPLE; TOUGH TO FIND)**
256. 5 3/4" Tall x 4" Diam. Imperial Miniature Morning Glory Swung Vase – Purp. (super irid.; desirable)
257. 5 3/4" Tall x 4 5/8" Diam. Imperial Miniature Morning Glory Swung Vase – Smoke (has a super odd flare and great irid.)
258. 5 1/4" Tall x 3 3/8" Diam. Imperial Miniature Morning Glory Swung Vase – Green (scarce)
259. 7 7/8" Tall x 3 1/8" Diam. Imperial Miniature Morning Glory Tall Swung Vase – Purp. (really tall example with excellent irid.)
260. **6" TALL X 3 1/2" DIAM. IMPERIAL MORNING GLORY AND DRAPE MINIATURE SWUNG VASE – PURP. (RARE AND VERY DESIRABLE ITEM; SUPER IRID.)**
261. 13 1/4" Tall Imperial Freefold odd Swung Vase – Purp. (scarce with great color)
262. **IMPERIAL THUMBPRINT AND OVALS 6 RUFFLED VASE – MARI. (VERY SCARCE ITEM; NICE COLOR AND IRID.)**
263. 8 7/8" Tall x 2 1/2" Base Imperial Ripple Miniature Swung Vase – Clamb. / Pastel Mari. (almost wants to be white; nice irid.)
264. 9 1/4" Tall x 2 1/2" Base Imperial Ripple Miniature Swung Vase – Aqua / Teal (rare color for this size; very tough!)
265. **18 5/8" TALL X 4 5/8" BASE X 6 1/2" DIAM. IMPERIAL RIPPLE SWUNG FUNERAL VASE – DK. MARI. (RARE; NICE LARGE SIZE WITH GREAT COLOR)**
266. 4 3/4" Tall x 2 1/2" Base x 4" Diam. Imperial Ripple Miniature Squatty Swung Vase – Dk. Mari. (scarce; nice dark color and irid.)
267. 7 1/2" Tall x 3 3/8" Base x 6" Diam. Imperial Ripple Squatty Swung Vase – Amber (a beaut; nice color)
268. 7 1/2" Tall x 2 1/2" Base x 3 3/8" Diam. Imperial Ripple Miniature Swung Vase – Amber (scarce; nice)
269. 6" Tall x 2 1/2" Base x 4" Diam. Odd Flat Flared Miniature Swung Vase – Green (really odd top ruffle; very desirable)
270. **11 1/2" TALL X 2 7/8" BASE IMPERIAL RIPPLE STANDARD SWUNG VASE – SAPPHIRE (RARE AND DESIRABLE; SUPER BASE COLOR)**
271. **7 1/2" TALL X 3 3/8" BASE X 5 1/4" DIAM. IMPERIAL RIPPLE SQUATTY SWUNG MIDSIZE VASE – PASTEL SMOKE (REALLY GREAT PASTEL IRID.; VERY DIFFERENT)**
272. **11 1/2" TALL X 3 7/8" BASE X 6" DIAM. IMPERIAL RIPPLE MIDSIZE SWUNG VASE – PASTEL SMOKE (ANOTHER VARIATION OF THE ABOVE COLOR)**
273. 10 1/8" Tall x 2 7/8" Base x 4-4 1/2" Diam. Imperial Ripple Standard Swung Vase – Smoke (great irid.; really nice)
274. 7 1/4" Tall x 2 1/2" Base x 3 1/2" Diam. Imperial Ripple Miniature Swung Vase – Purp. (super size and irid.)
275. **12" TALL X 3 7/8" X 6 1/4" DIAM. IMPERIAL RIPPLE LG. MIDSIZE SWUNG VASE – LT. AMYTH. (GREAT LIGHT BASE COLOR AND IRID.)**
276. 10 1/2" Tall x 4" Base x 6 1/4" Diam. Imperial Ripple Lg. Squatty Swung Vase – Purp. (super size and color)

277. 7 5/8" Tall x 3 3/8" Base x 6 3/8" Diam. Imperial Ripple midsize Squatty Swung Vase – Purp. (really bright irid.)
278. 13 3/4" Tall x 3 3/8" Base x 4 3/4" Diam. Imperial Ripple Lg. Standard Swung Vase – Purp. (really bright irid.)
279. 10 3/8" Tall x 3" Base x 4 1/4" Diam. Imperial Ripple Standard Swung Vase – Root Beer Amber (odd base color)
280. **11" TALL X 2 7/8" BASE X 4" DIAM. IMPERIAL RIPPLE STANDARD SWUNG VASE – DARK VIOLET BLUE (REALLY DARK BASE COLOR; SCARCE)**
281. Fenton 2 Row Open Edge 6 Ruffled Hat – Black Amyth. (scarce base color)
282. Fenton 2 Row Open Edge 6 Ruffled Hat – odd Blue / Red (really a blue example with and odd reddish effect)
283. 6 1/2" Fenton Blackberry 2 Row Open Edge Deep Round Flared Hat – Mari. (very rare shape for this item; great color)
284. **8 5/8" FENTON STRETCH 3 ROW OPEN EDGE 8 RUFFLED BOWL – CELESTE BLUE (RARE AND VERY DESIRABLE COLOR WITH GREAT STRETCH EFFECT)**
285. **7 3/4" FENTON STRETCH G & C BALL FTD. DEEP ROUND FLARED BOWL – CELESTE BLUE (RARE AND DESIRABLE; SUPER COLOR AND IRID.)**
286. 8 1/2" Fenton Stretch 3 Row Open Edge Round Flared Bowl – White (very scarce; super frosty with nice irid.)
287. **FENTON STRETCH 2 PC. HANDLED GUEST SET – FLORENTINE GREEN / COBALT HANDLE (RARE AND DESIRABLE SET; GREAT COLOR)**
288. **FENTON STRETCH FTD. ROUND FLARED NUT CUP – WISTERIA (VERY RARE COLORED STRETCH NOVELTY)**
289. **3 7/8" FENTON STRETCH WHIMSEY SPITTOON – GRECIAN GOLD (EXTREMELY RARE WHIMSEY; PLAIN PATTERN WITH GREAT COLOR)**
290. **9 1/4" FENTON THISTLE FLAT PLATE – GREEN (RARE AND EXTREMELY DESIRABLE; BRIGHT SATINY FINISH)**
291. **9 1/4" FENTON LOTUS AND GRAPE FLAT PLATE – GREEN (RARE AND VERY DESIRABLE; SUPER IRID.)**
292. 9 3/4" Fenton Holly Flared Plate – Green (very scarce; nice irid. and really nice base color)
293. **9 1/4" HOLLY 8 RUFFLED BOWL – MARI. / MOONSTONE (RARE AND DESIRABLE; GREAT COLOR – GREAT EXAMPLE)**
294. 7 1/4" Fenton G & C I.C. Shaped Bowl – Mari. / Moonstone (another excellent example of a great colored item)
295. **8 1/2" FENTON G & C BALL FTD. 8 RUFFLED BOWL – COBALT BLUE OPAL. (RARE AND DESIRABLE; EXCELLENT IRID. AND OPAL ON EDGE)**
296. **9 1/4" FENTON CORAL FLAT PLATE – MARI. (RARE AND DESIRABLE ITEM; NICE COLOR – A TOUGHIE)**
297. **9 1/2" FENTON HEARTS AND VINE PLATE WITH "COMPLIMENTS OF SPECTOR'S DEPARTMENT STORE" ADVERTISING – MARI. (VERY DESIRABLE; SATINY AND ALWAYS IN DEMAND)**
298. 7 1/2" Fenton Wild Blackberry Deep Round Bowl with C.R.E. – Green (rare shape for this scarce pattern)
299. 6 1/2" Fenton Vintage Grape Flared Plate – Amyth. (fair detail; scarce item)
300. **9 1/8" FENTON VINTAGE GRAPE FLAT PLATE – GREEN (VERY RARE AND VERY DESIRABLE; ODD DARK SATINY FINISH)**
301. **8 3/4" FENTON VINTAGE GRAPE 8 RUFFLED BOWL – RED (RARE AND VERY DESIRABLE; GREAT COLOR WITH A DARK SATINY FINISH)**
302. **9" FENTON 1911 "BIRMINGHAM AGE HERALD – CARRIERS GREETINGS" FLAT PLATE – AMYTH. (EXCELLENT EXAMPLE OF A RARE ITEM; NICE)**
303. **5 1/8" FENTON GARDEN MUMS DEEP ROUND BOWL WITH "GREETINGS – DORSEY FUNKENSTEIN FINE FURNITURE" ADVERTISING – AMYTH. (ACTUALLY QUITE A RARE ADVERTISING ITEM; SATINY)**
304. 9 7/8" Fenton Feathered Serpent Lg. 8 Ruffled Bowl with 3 in 1 Edge – Blue (impressive item)
305. **9 1/4" FENTON PLAID FLARED PLATE – BLUE (VERY RARE AND ATTRACTIVE; VERY DIFFICULT ITEM TO FIND)**
306. 8 5/8" Fenton Plaid I.C. Shaped Bowl – Blue (scarce item in a desirable shape)
307. 9" Fenton Plaid 8 Ruffled Bowl – Dk. Mari. (scarce; nice satiny finish)
308. **9 1/4" FENTON CAPTIVE ROSE FLAT PLATE – BLUE (RARE AND DESIRABLE; NICE SATINY FINISH)**
309. 8 1/4" Fenton Captive Rose Bowl with odd 3 in 1 Edge – Blue (super irid.; nice color)
310. **9 1/2" FENTON LEAF CHAIN FLAT PLATE – DK. MARI. (RARE AND VERY DESIRABLE; SUPER DARK COLOR; NICE)**
311. 7 5/8" Fenton Leaf Chain Flat Plate – Blue (satiny finish)
312. 7 1/2" Fenton Horsehead Medallion Flat Plate – Mari. (scarce; nice irid.)
313. **6 1/2" FENTON HORSEHEAD MEDALLION 3 FTD. FLARED NUT BOWL – MARI. / VASELINE (VERY SCARCE; TOUGH BASE COLOR; DESIRABLE)**
314. 7 3/4" Fenton Horsehead Medallion ftd. J.I.P. Bowl – Blue (scarce; nice detail and very desirable)
315. **9" FENTON DRAGON AND STRAWBERRY DEEP ROUND FLARED COLLAR BASED BOWL – AMYTH. (VERY RARE BASE COLOR; GREAT SHAPE; HAS A COUPLE SPOTTY AREAS)**

- ___ 316. **9" FENTON DRAGON AND STRAWBERRY DEEP I.C. SHAPED BOWL – DK. MARI. (VERY SCARCE; REALLY NICE COLOR AND DETAIL)**
- ___ 317. **9 1/4" FENTON STAG AND HOLLY SPATULA FTD. FLAT PLATE – MARI. (VERY SCARCE AND VERY FLAT; GREAT COLOR AND FINISH)**
- ___ 318. Fenton Stag and Holly Giant 3 ftd. Rose Bowl – Dk. Mari. (an excellent example with reddish highlights)
- ___ 319. Fenton Persian Medallion 2 Handled 4 sided Bon Bon – Aqua (very scarce base color; nice)
- ___ 320. **9 1/2" FENTON PERSIAN MEDALLION FLAT PLATE – WHITE (EXTREMELY RARE WITH EXCELLENT IRID.)**
- ___ 321. 9 1/2" Fenton Persian Medallion Flared Plate – Blue (very scarce; nice satiny example)
- ___ 322. **FENTON ORANGE TREE HANDLED LOVING CUP – BLUE / ELEC. BLUE (SUPER, SUPER IRID.; REALLY ATTRACTIVE)**
- ___ 323. Fenton Orange Tree Handled Loving Cup – Green (an excellent example; nice color and irid.)
- ___ 324. Fenton Orange Tree Handled Loving Cup – Dk. Mari. (super example; great color and irid.)
- ___ 325. 9 5/8" Fenton Orange Tree Flat Plate – Blue (very scarce; nice)
- ___ 326. 8 1/4" Fenton Orange Tree I.C. Shaped Bowl – Blue (super irid.; nice)
- ___ 327. 9 1/4" Fenton Ten Mums Bowl with 3 in 1 Edge – Amyth. (very scarce; nice bright irid.)
- ___ 328. 9 1/4" Fenton Peacock at the Urn Plate – Blue (really nice color and bright irid.)
- ___ 329. 9" Fenton Peacock at the Urn 8 Ruffled Bowl – Lt. Mari. / Vaseline (rare base color with irid. on the ext.)
- ___ 330. **20" TALL X 5 1/4" BASE X 8 1/4" DIAM. FENTON DIAMOND RIB SWUNG FUNERAL VASE – AMYTH. (RARE AND DESIRABLE; GREAT SIZE, COLOR AND IRID.; MANUF. STONE IN BODY)**
- ___ 331. 13" Tall Fenton Bullseye and Beads midsize Swung Vase – Blue (scarce; nice detail)
- ___ 332. 9 1/4" Tall Fenton Fine Rib Standard Swung Vase – Mari. / Vaseline (scarce; nice base color)
- ___ 333. 10 3/4" Tall Fenton Fine Rib Standard Swung Vase – Green (super color; really bright)
- ___ 334. 9 3/4" Tall Fenton Fine Rib Standard Swung Vase – Blue (nice color)
- ___ 335. **10 1/4" FENTON CHRYSANTHEMUM LG. BALL FTD. I.C. SHAPED BOWL – ELEC. BLUE (SUPER COLOR AND IRID.; GREAT EXAMPLE)**
- ___ 336. **9 1/2" FENTON PANTHER LG. 8 RUFFLED FTD. MASTER BERRY BOWL – BLUE (SUPER SCARCE WITH EXCELLENT COLOR AND IRID.)**
- ___ 337. **9" FENTON PEACOCK AND GRAPE 8 RUFFLED BOWL – MANDARIN RED SLAG (EXTREMELY RARE COLOR WITH A SATINY FINISH)**
- ___ 338. 8 5/8" Fenton Little Fishes ball ftd. Deep Round Flared Bowl – Mari. (scarce; nice detail)
- ___ 339. Fenton Milady Tumbler – Blue (scarce; nice)
- ___ 340. **FENTON LILY OF THE VALLEY TUMBLER – DK. MARI. (VERY RARE; DARK COLOR – SUPER EXAMPLE)**
- ___ 341. Fenton Floral and Grape Bulbous Water Pitcher – Blue (great color and irid.)
- ___ 342. (3) Fenton Floral and Grape Tumblers – Blue (selling 3 times the money)
- ___ 343. Fenton Enameled Cherries Enam. Decorated Cannonball Pitcher – Blue (scarce)
- ___ 344. (3) Fenton Enameled Cherries Tumblers – Blue (selling 3 x the money)
- ___ 345. **FENTON ZIG ZAG ENAMELED COLUMBINE DECORATED BULBOUS WATER PITCHER – BLUE (VERY SCARCE AND DESIRABLE)**
- ___ 346. Fenton Enameled Forget Me Not Tankard Water Pitcher – Mari. (odd decoration; very nice example)
- ___ 347. Fenton Enameled Crocus Cannonball Water Pitcher – White (scarce)
- ___ 348. Fenton Enameled Crocus Cannonball Water Pitcher – Ice Green (scarce)
- ___ 349. 8 1/2" Fenton Dragon and Lotus Bowl with 3 in 1 Edge – Green (scarce; nice color and irid.)
- ___ 350. **8 1/4" FENTON DRAGON AND LOTUS BOWL WITH 3 IN 1 EDGE – LIME GREEN OPAL. (VERY SCARCE; TOUGH TO FIND; NICE ITEM)**
- ___ 351. **9" FENTON DRAGON AND LOTUS BOWL WITH 3 IN 1 EDGE – P. OPAL. (VERY SCARCE; NICE COLOR AND IRID.)**
- ___ 352. **9 1/4" FENTON DRAGON AND LOTUS FLAT PLATE – MARI. (RARE AND DESIRABLE; ODD SATINY FINISH)**
- ___ 353. 11 1/8" Tall Fenton Rustic Standard Swung Vase – Green (nice color)
- ___ 354. 16 1/2" Tall x 4 1/4" Base Fenton Rustic midsize Swung Vase – Green (nice color and irid.)
- ___ 355. **18 1/2" TALL X 5 1/4" BASE X 6 1/4" DIAM. FENTON RUSTIC SWUNG FUNERAL VASE – GREEN (RARE AND DESIRABLE; GREAT COLOR; TOUGH)**
- ___ 356. **17 3/4" TALL X 5 1/4" BASE X 7 3/4" DIAM. FENTON RUSTIC SWUNG FUNERAL VASE – AMYTH. (RARE AND DESIRABLE WITH GREAT COLOR AND IRID.)**
- ___ 357. 18 1/2" Tall x 4 1/4" Base Fenton Rustic midsize Swung Vase – Amyth. (nice satiny finish)
- ___ 358. **20 1/4" TALL X 5 1/4" BASE X 7 1/4" DIAM. FENTON RUSTIC SWUNG FUNERAL VASE – BLUE (RARE AND DESIRABLE; BRIGHT COLOR AND IRID.)**
- ___ 359. 15 3/4" Tall x 4 1/4" Base Fenton Rustic midsize Swung Vase – Blue (nice satiny finish)
- ___ 360. **17 3/4" TALL X 5 1/4" BASE X 7 1/8" DIAM. FENTON RUSTIC SWUNG FUNERAL VASE – WHITE (RARE AND DESIRABLE; FROSTY WITH GREAT IRID.)**
- ___ 361. 16 1/2" Tall x 4 1/4" Base Fenton Rustic midsize Swung Vase – White (very scarce; nice size – frosty and nice)

- ___ 362. **20 3/4" TALL X 5 1/4" BASE X 7" DIAM. FENTON RUSTIC SWUNG FUNERAL VASE – MARI. (VERY SCARCE AND DESIRABLE; NICE COLOR)**
- ___ 363. 16 1/4" Tall x 4 1/4" Base Fenton Rustic midsize Swung Vase – Mari. (nice color and irid.)
- ___ 364. **10 1/2" TALL FENTON PLUME PANELS SWUNG VASE – RED (RARE AND VERY DESIRABLE – AN EXCELLENT EXAMPLE)**
- ___ 365. 12 1/4" Tall Fenton Plume Panels Swung Vase – Amber (very rare base color – tough to find)
- ___ 366. 11 7/8" Tall Fenton Plume Panels Swung Vase – Blue (nice bright satiny example)
- ___ 367. 9" Fenton Chrysanthemum 8 Ruffled Bowl – Green (scarce; satiny)
- ___ 368. 9" Fenton Chrysanthemum 8 Ruffled Bowl – Amyth. (scarce; satiny)
- ___ 369. 7 3/4" Fenton Vintage Grape Flat Plate – Amyth. (bright radium style irid.)
- ___ 370. **FENTON STRAWBERRY SCROLL HANDLED WATER PITCHER – MARI. (RARE AND EXTREMELY DESIRABLE; ONE OF MY FAVORITES)**
- ___ 371. Fenton Strawberry Scroll Tumbler – Mari. (scarce; nice color)
- ___ 372. 9 7/8" Fenton Lotus and Grape Lg. ball ftd. 8 Ruffled Bowl – Teally Green (odd shade of green; rare and satiny)
- ___ 373. Fenton Garland ftd. Rosebowl – Blue / Elec. Blue (super irid.)
- ___ 374. Fenton Garland ftd. Rosebowl – Dk. Mari. (super irid.)
- ___ 375. **9 1/2" FENTON PERSIAN MEDALLION FLAT PLATE – DK. MARI. (ABSOLUTELY SUPER, SUPER COLOR AND DARK IRID.)**
- ___ 376. **9" FENTON DRAGON AND LOTUS FLAT PLATE – DK. MARI. (ANOTHER SUPER ITEM; GREAT COLOR)**
- ___ 377. 8 5/8" Fenton Dragon and Lotus I.C. Shaped Bowl – Dark Green (super dark color with excellent irid.)
- ___ 378. 9 5/8" Fenton Holly odd Shaped 8 Ruffled Bowl – Amber / Mari. (odd tint)
- ___ 379. **9 1/4" FENTON LEAF CHAIN FLAT PLATE – DK. MARI. (SCARCE WITH GREAT COLOR AND IRID.)**
- ___ 380. **7 3/4" FENTON STAG AND HOLLY SPATULA FTD. 8 RUFFLED BOWL – RED (RARE AND VERY DESIRABLE; GREAT COLOR AND IRID.)**
- ___ 381. 6 5/8" Fenton Blackberry 2 Row Open Edge Round Flared Hat – Blue (odd shape; great color and bright irid.)
- ___ 382. Fenton Blackberry 2 Row Open Edge 2 sided Hat – Lt. Mari. / Vaseline (scarce item)
- ___ 383. Fenton 2 Row Open Edge 2 sided Hat – Red (scarce color)
- ___ 384. Fenton 2 Row Open Edge 6 Ruffled Hat – Mari. / Vaseline (scarce)
- ___ 385. **FENTON 2 ROW OPEN EDGE 4 SIDED SQUARE HAT – RED (SCARCE SHAPE TO FIND; SATINY)**
- ___ 386. Fenton Persian Medallion Hair Receiver – Dk. Mari. (super color)
- ___ 387. Fenton Persian Medallion Rose Bowl – Dk. Mari. (super color)
- ___ 388. Fenton Persian Medallion Rose Bowl – Mari.
- ___ 389. Fenton Persian Medallion Rose Bowl – Blue (great irid.)
- ___ 390. **FENTON PERSIAN MEDALLION ROSE BOWL – AMYTH. (RARE BASE COLOR; VERY TOUGH TO FIND)**
- ___ 391. **FENTON BLACKBERRY SPRAY 6 RUFFLED HAT – REVERSE AMBERINA OPAL. (RARE AND VERY DESIRABLE ITEM IN THIS COLOR – NICE!!)**
- ___ 392. **FENTON BLACKBERRY SPRAY CRIMPED EDGE J.I.P. HAT – RED (VERY DESIRABLE COLOR AND SHAPE)**
- ___ 393. **FENTON BLACKBERRY SPRAY CRIMPED EDGE J.I.P. HAT – REVERSE AMBERINA (VERY SCARCE IN THIS COLOR)**
- ___ 394. Fenton Blackberry Spray Crimped Edge J.I.P. Hat – Green (scarce color and shape)
- ___ 395. Fenton Blackberry Spray Crimped Edge J.I.P. Hat – Amyth. (scarce base color)
- ___ 396. Fenton Blackberry Spray Crimped Edge J.I.P. Hat – Lt. Amyth. (scarce)
- ___ 397. Fenton Blackberry Spray Crimped Edge J.I.P. Hat – Lime Green (scarce; desirable)
- ___ 398. Fenton Blackberry Spray Crimped Edge J.I.P. Hat – Aqua / Mari. (scarce)
- ___ 399. Fenton Blackberry Spray Crimped Edge J.I.P. Hat – Blue
- ___ 400. **6 3/4" FENTON BLACKBERRY SPRAY FLATTENED OUT CRIMPED EDGE HAT – GREEN (RARE SHAPE; NICE COLOR)**
- ___ 401. 6 1/2" Fenton Blackberry Spray Flattened Out Crimped Edge Hat – Aqua / Mari. (scarce shape)
- ___ 402. 6 5/8" Fenton Blackberry Spray Flattened Out Crimped Edge Hat – Mari.
- ___ 403. Fenton Blackberry Spray 6 Ruffled Crimped Edge Hat – Green (scarce)
- ___ 404. Fenton Blackberry Spray 6 Ruffled Crimped Edge Hat – Lime Green (nice item)
- ___ 405. Fenton Blackberry Spray 6 Ruffled Crimped Edge Hat – Dk. Lime Green (nice item)
- ___ 406. Fenton Blackberry Spray 6 Ruffled Crimped Edge Hat – Blue
- ___ 407. Signed Robert Hansen Inverted Strawberry Tumbler – Teal (super; excellent color and irid.)
- ___ 408. Signed Czech Enam. Hair Tonic Vanity Jar – Mari. (very scarce with excellent enam. decor.)
- ___ 409. 12" Carnival Deviled Egg Plate – Teal Blue (very scarce; odd base color)
- ___ 410. 5 3/4" Oblong Carnival Glass Soap Dish with Etched Engraving – Lt. Mari. (rare item; for the collector who has everything)

DONALD DORAIS
150 HIGHLAND AVENUE
CUMBERLAND, RI 02864

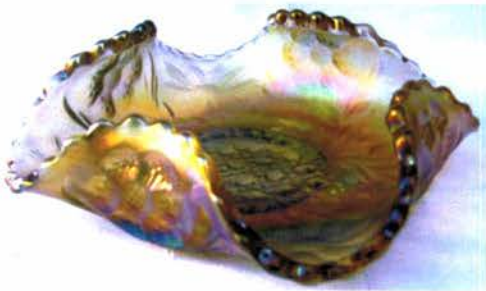
BURNS AUCTION SERVICE



VISIT www.necga.com for
pictures and brochures.
CLICK CARNIVAL GLASS LINKS
and look for Burns Auction.

AUCTION FLEX AVAILABLE FOR
THIS AUCTION

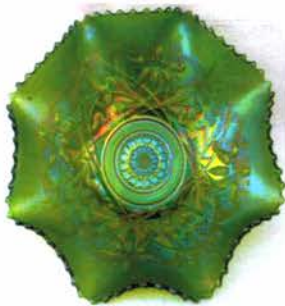
LEE MARKLEY
BOX 306
MENTONE, IN 46539



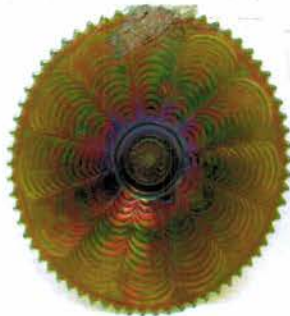
LOT# 57

Visit us at Auctionzip.com for photos and listing. Auctioneer ID#29661

4653980306 8004



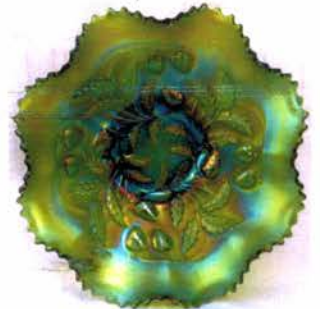
LOT# 75



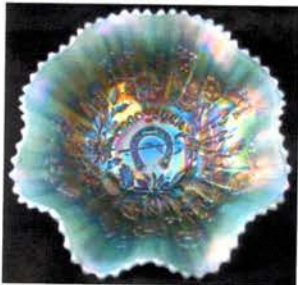
LOT# 80



LOT# 125



LOT# 130



LOT# 60



LOT# 290



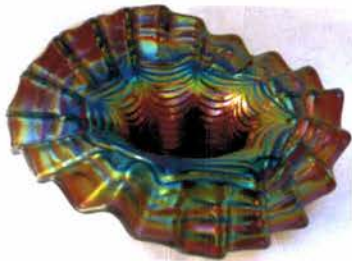
Lot# 300



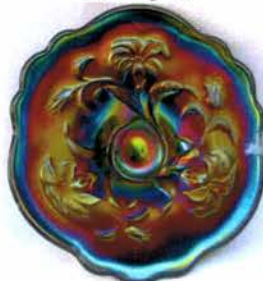
Lot# 132



LOT# 30



LOT# 50



LOT# 32



LOT# 217